

PCCP

Physical Chemistry Chemical Physics
rsc.li/pccp



Themed issue: Bunsentagung 2019: Functional Materials

ISSN 1463-9076



ROYAL SOCIETY
OF CHEMISTRY

Celebrating
IYPT 2019

PAPER

Nadja C. Bigall *et al.*

Nanoplatelet cryoaerogels with potential application in photoelectrochemical sensing



Cite this: *Phys. Chem. Chem. Phys.*,
2019, 21, 9002

Nanoplatelet cryoaerogels with potential application in photoelectrochemical sensing†

Anja Schlosser,^{ab} Lea C. Meyer,^{ab} Franziska Lübke,^{ab} Jan F. Miethe^{ab} and Nadja C. Bigall^{ib} *^{ab}

Semiconductor nanoparticle based porous 3D assemblies are interesting materials for various applications in the fields of photovoltaics, catalysis, or optical sensing. For use as photoelectrodes in photoelectrochemical sensors they need to be characterised by a high porosity, a good photostability, and a high charge carrier mobility. Our work reports on the preparation of cryoaerogel photoelectrodes based on CdSe nanoplatelets and their photoelectrochemical characterisation by means of linear sweep voltammetry (LSV) and intensity modulated photocurrent spectroscopy (IMPS). The obtained open-pored cryoaerogel films were observed to produce much higher photocurrents than comparable drop-cast films. By means of IMPS, the performance differences could be linked to the occurrence of charge carrier movement, which could solely be proven for the cryoaerogels. In a proof-of-principle experiment, the potential of the prepared photoelectrodes for application in photoelectrochemical sensing was moreover demonstrated.

Received 15th January 2019,
Accepted 14th February 2019

DOI: 10.1039/c9cp00281b

rsc.li/pccp

Introduction

Photoelectrochemical sensors based on semiconductor nanoparticles (NPs) have been intensively researched in recent decades, as they exhibit high sensitivities, fast responses, and a broad analyte range.^{1–3} One particular advantage of this sensor type is the independence of the excitation signal (light) and the detection signal (current), which does not only yield low detection limits but could also enable the detection of multiple analytes by one and the same probe.^{1,4} To date, numerous types of semiconductor NP sensitised photoelectrodes for sensing applications have already been developed, including self-assembled NP monolayers,^{5–9} and layer-by-layer,^{10–14} and cross-linked^{15,16} assemblies. Multilayered systems in general were shown to exhibit distinctly higher photocurrents than comparable monolayer systems, with the photocurrent being observed to scale with the number of layers deposited.^{13–16} However, in order to avoid charging of the NPs and to mediate the electron transfer between the particles within the assembly, incorporation of redox-active species into the multilayers was often required.^{13,15} Although the application of these species leads to enhanced photocurrents, they may interfere with analyte molecules if the photoelectrodes are to be applied as photoelectrochemical sensors.^{1,17}

Therefore it is desirable to avoid the use of redox-active species in the construction of photoelectrodes while preserving the high charge carrier transfer rates between the particles.

As one alternative to the afore-mentioned NP assemblies, porous self-supporting NP (aero)gels could be considered. (Aero)gels are characterised by a high porosity and large surface areas (and, due to their hierarchical porosity, by good accessibility of the surface), as well as particle–particle contacts which enable charge carrier mobility.^{18–21} Semiconductor NP based gels can be formed from colloidal NP solutions *e.g.* by the addition of chemical reagents which are able to remove the stabilising ligands from the NP surface^{18–20,22} or to serve as cross-linkers,^{23,24} or by physical methods.^{21,25} Through the use of mild gelation conditions it is possible to assemble NPs in such a way that their nanoscopic properties are partially retained even though they are in direct contact with each other. The direct particle–particle contacts were observed to facilitate the charge carrier delocalisation and transport within the structures, leading to prolonged fluorescence lifetimes as well as enhanced photoelectrochemical performance.^{19,26,27} In this work, we report on the fabrication and photoelectrochemical characterisation of cryoaerogel coated photoelectrodes which can be applied as photoelectrochemical sensors. The prepared cryoaerogels are based on quasi-rectangular CdSe nanoplatelets (NPLs) with a thickness of 4 monolayers (MLs), which should show excellent electrochemical properties due to their very high surface-to-volume ratio. However, CdSe NPLs could so far only be assembled into stable 3D structures by time-consuming chemical gelation or by polymer encapsulation.^{20,28} By application of the comparably mild cryoaerogelation method, it was possible to assemble NPLs

^a Institute of Physical Chemistry and Electrochemistry, Leibniz Universität Hannover, Callinstr. 3A, 30167 Hannover, Germany. E-mail: nadja.bigall@pci.uni-hannover.de; Fax: +49 511 762 19121; Tel: +49 511 762 3185

^b Laboratory of Nano and Quantum Engineering (LNQE), Leibniz Universität Hannover, Schneiderberg 39, 30167 Hannover, Germany

† Electronic supplementary information (ESI) available. See DOI: 10.1039/c9cp00281b



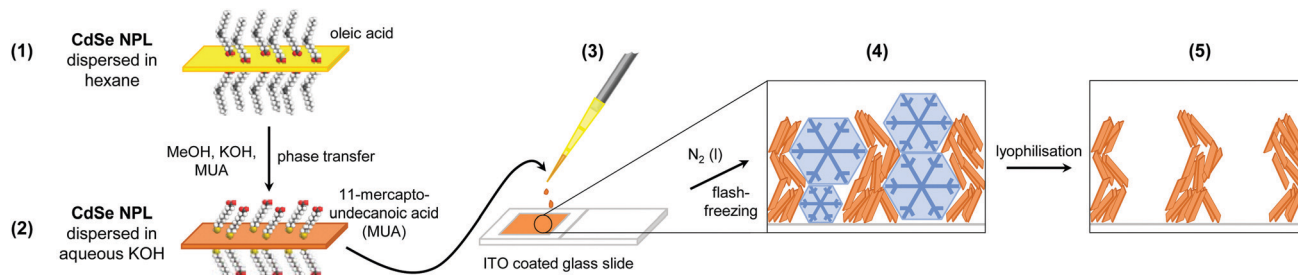


Fig. 1 Schematic drawing of the cryoaerogel photoelectrode preparation process. After the synthesis in organic solvents (1), the NPLs were transferred to an aqueous phase by ligand exchange (2). Afterwards, the concentrated aqueous NPL solutions were dropped onto functionalised tin doped indium oxide (ITO) coated glass electrodes (3) and flash-frozen in liquid nitrogen (4). Finally, the ice crystals which were formed during the freezing process were removed by lyophilisation (5) to yield highly porous cryoaerogel films on the electrode surface.

into open and porous structures consisting of stacked sheets (Fig. 1) without them being altered. The thickness and morphology of the obtained structures could easily be modified by the variation of different manufacturing parameters, such as the particle concentration and amount. The cryoaerogel morphology was observed to strongly influence the charge carrier transport within the structures and therefore their photoelectrochemical performance, which was proven by means of intensity modulated photocurrent spectroscopy (IMPS). Until now, IMPS was mainly employed in the characterisation of materials for solar or photoelectrochemical cells,^{29–32} as well as nanoparticle monolayers.^{9,33,34} We have recently demonstrated that IMPS can also be a useful method to gain insights into the charge carrier dynamics in nanoparticle assemblies.^{27,28} The IMPS investigations on cryoaerogels, as shown in the present work, revealed that charge carriers are able to move through the NPL network, which leads to a significant enhancement of the photocurrent. To moreover demonstrate the applicability of the cryoaerogel coated photoelectrodes for photoelectrochemical sensing, we finally conducted a proof-of-principle experiment comprising the measurement of the photoresponse to ferricyanide ions.

Experimental

Chemicals

Cadmium nitrate tetrahydrate ($\text{Cd}(\text{NO}_3)_2 \cdot 4\text{H}_2\text{O}$, >98%), sodium myristate ($\text{Na}(\text{myr})$, >99%), 1-octadecene (ODE, 90%), cadmium acetate dihydrate ($\text{Cd}(\text{OAc})_2 \cdot 2\text{H}_2\text{O}$, >98%), oleic acid (OLA, >90%), *n*-hexane ($\geq 99\%$), 11-mercaptoundecanoic acid (MUA, 95%), acetone (99.5%), potassium hydroxide (KOH, >85%), ammonium hydroxide (NH_4OH , 28–30%), hydrogen peroxide (H_2O_2 , 30%), toluene (99.7%), (3-mercaptopropyl)trimethoxysilane (MPTMS, 95%), sulfuric acid (H_2SO_4) (95–97%), potassium ferricyanide(III) trihydrate ($\geq 98.5\%$), sodium dihydrogen phosphate dihydrate (99%), and disodium hydrogen phosphate dodecahydrate (99%) were purchased from Sigma-Aldrich. Methanol (MeOH , $\geq 99.8\%$), 2-propanol (99.5%), and ethanol (EtOH , $\geq 99.8\%$) were purchased from Roth. Selenium (200 mesh, 99.999%) was purchased from Alfa Aesar. Sodium sulfite (Na_2SO_3) (>97%) was purchased from Fisher Scientific. All chemicals were used as received without further purification.

Synthesis procedures

Synthesis of cadmium myristate ($\text{Cd}(\text{myr})_2$). $\text{Cd}(\text{myr})_2$ was synthesised according to a previously published procedure without modifications.³⁵

Synthesis of 4 monolayer (ML) thick quasi-rectangular CdSe nanoplatelets (NPLs). 4 ML thick NPLs were synthesised following the method described by Pedetti *et al.*,³⁶ but the synthesis was significantly upscaled. In a 250 mL three-neck round-bottom flask equipped with an air cooler, 1360 mg (2.4 mmol) of $\text{Cd}(\text{myr})_2$ and 96 mg (1.2 mmol) of selenium powder were suspended in 120 mL of ODE. The suspension was degassed under vacuum twice (at 70 °C for 30 min) and subsequently heated to 240 °C under an argon flow. After reaching a temperature of 205 °C, 320 mg (1.2 mmol) of solid $\text{Cd}(\text{OAc})_2 \cdot 2\text{H}_2\text{O}$ was swiftly added to the reaction solution. The reaction was continued for 10 min at 240 °C and stopped by injection of 8 mL of OLA and removing the heating mantle. To separate the desired 4 ML thick NPLs from NPLs with other thicknesses and quantum dots, a number of size-selective precipitation steps have been performed. At first, 50 mL of EtOH was added to the crude synthesis product and the suspension was centrifuged at 4000 rcf for 10 min. The dark red supernatant, which mainly contained quantum dots, was discarded, while the yellow solids were dispersed in 60 mL of hexane. The resulting solution was centrifuged at 4000 rcf for 10 min to remove 3 ML NPLs. The desired 4 ML NPLs were afterwards collected by addition of 40 mL of EtOH followed by centrifugation (10 min, 4000 rcf) and redispersed in 10 mL of hexane.

Water transfer of 4 ML thick CdSe NPLs with 11-mercapto-undecanoic acid (MUA). CdSe NPLs were transferred to an aqueous medium by ligand exchange with MUA.³⁷ Initially, 28 mg (128.2 μmol) of MUA and 16.5 mg of KOH (294.1 μmol) were dispersed in 2 mL of MeOH by ultrasonication for 5 min. To this solution, 1.5 mL of a NPL solution in hexane was added (20.6 mM Cd^{2+}) and the mixture was shaken overnight in the dark. Afterwards, the colourless hexane was removed. The NPLs were collected by centrifugation of the methanol phase (10 min, 3461 rcf) and redispersion in 1 mL of aqueous KOH (various concentrations between 1×10^{-1} and 1×10^{-5} M) or distilled water. Excess ligands were removed by precipitation with 1 mL of acetone followed by centrifugation (10 min, 3461 rcf). The MUA capped nanocrystals were finally redispersed in a certain volume (300 μL or 1 mL) of the respective KOH solution.



Photoelectrode preparation

Functionalisation of ITO coated glass electrodes. Tin doped indium oxide (ITO) coated soda lime float glass (thickness: 1.1 mm, ITO surface resistance: 12 Ω per square) was purchased from VisionTek Ltd. At first, glass electrodes (15 \times 30 mm) with a conductive ITO coating were cleaned and hydrophilised by immersion into a 5:1:1 v/v% H₂O:NH₃:H₂O₂ solution (2 h at 50 $^{\circ}$ C). Afterwards, the cleaned electrodes were carefully rinsed with water, isopropanol, and toluene. Following this, the electrodes were functionalised in a solution containing 1 v/v% of MPTMS in toluene (2 h at 50 $^{\circ}$ C). Finally, the electrodes were removed from the functionalisation solution and excess MPTMS was rinsed off with toluene.

Preparation of cryoerogel films on ITO coated electrodes by cryoerogelation. At first, molds for the nanoparticle solution on the functionalised electrodes were created with adhesive tape. Therefore, a stripe of adhesive tape was placed on the electrode and a square with an area of 1 cm² was cut out with a scalpel. Subsequently, a certain amount (10–40 μ L) of the nanoparticle solution was filled into the square with a pipette. Once the whole square was wetted with the nanoparticle solution the electrode was dipped into liquid nitrogen to flash-freeze the nanoparticle solution. Afterwards, the electrodes were placed in a lyophiliser (Christ Alpha LD 1-2) for 20 h at ambient temperature and at a pressure of <0.05 mbar.

Preparation of particle (sub-)mono- and multilayers on ITO electrodes. NPL (sub-)monolayer photoelectrodes were obtained by immersing MPTMS functionalised ITO glass slides into diluted NPL solutions in toluene (0.25 mM Cd²⁺) for 1 d. To remove non-adsorbed NPLs from the electrode surface, the electrodes were afterwards carefully rinsed with toluene. In addition, NPLs on the non-ITO coated side were removed with a toluene-soaked wipe. NPL multilayer coated ITO electrodes were prepared similarly to cryoerogel coated electrodes with the difference that the NPL solution was not frozen and freeze-dried but the solvent was removed by direct evaporation of the liquid assisted by an IR lamp in air.

Characterisation methods

UV/vis and photoluminescence (PL) spectroscopy. UV/vis spectra were recorded using a Cary 5000 spectrophotometer from Agilent Technologies; photoluminescence (PL) emission and excitation spectra were recorded with a Horiba Fluoromax-4. UV/vis extinction and PL emission/excitation spectra of colloidal solutions were measured in 3 mL quartz cuvettes with a path length of 1 cm. UV/vis absorption measurements of nanoparticle coated glass slides were carried out using a Cary 5000 spectrophotometer equipped with an Agilent DRA-2500 integrating sphere. The electrodes were measured in the center mount position using a solid sample holder.

Atomic absorption spectroscopy. Atomic absorption spectroscopy (AAS) was used to determine the Cd ion concentration of the nanoparticle solutions. For AAS measurements, a Varian AA140 instrument equipped with an oxygen/acetylene flame atomizer was applied. Hexane-based nanoparticle solutions (3–10 μ L)

were dried in air before digestion with aqua regia (1 mL) overnight. To aqueous samples (3–30 μ L), aqua regia was added directly. Six standard solutions with Cd ion concentrations between 0 ppm and 2.5 ppm were measured to obtain a calibration curve.

Transmission electron microscopy. Transmission electron microscopy (TEM) measurements were performed to characterise the size of the pristine CdSe NPLs and to investigate the morphologies of CdSe NPL cryoerogels. All measurements were carried out in bright field mode on a FEI Tecnai G2 F20 TMP ($C_s = 2$ mm, $C_c = 2$ mm) equipped with a 200 kV field emission gun. Samples of pristine NPLs were prepared by drop-casting 10 μ L of a diluted NPL solution onto carbon-coated copper TEM grids (Quantifoil, 300 mesh). Cryoerogel samples were prepared by gently pressing the TEM grid onto the cryoerogel film.

Scanning electron microscopy. Scanning electron microscopy (SEM) was applied for the characterisation of the morphology and the film thickness of the cryoerogels. SEM was carried out on a JEOL JSM 6700F equipped with a cold field emission gun electron source. The acceleration voltage was 2 kV for each measurement. The electrodes were fixed with conductive silver paint on the SEM holder. For the characterisation of the film thickness, the electrodes were cut with a glass cutter prior to fixing them on the SEM holder.

X-ray diffraction. X-ray diffraction (XRD) patterns were recorded using a Bruker D8 Advance in reflection mode. Liquid samples were drop-cast onto silicon single crystal carriers and dried in air. The cryoerogels were glued with grease onto the carriers.

Krypton physisorption. The surface area of CdSe NPL cryoerogels was estimated by Kr physisorption measurements. Therefore, a Quantachrome Autosorb-1 instrument was applied. Prior to the measurement, the monolithic cryoerogel sample was degassed under vacuum for 75 h at room temperature. The isotherm was recorded at a temperature of 87 K and the surface area was estimated by applying the Brunauer–Emmett–Teller (BET) equation.

Photoelectrochemical measurements. Details on the electrochemical setup are given in the ESI.† The photoelectrodes were characterised by three different photoelectrochemical methods: linear sweep voltammetry (LSV), intensity modulated photocurrent spectroscopy (IMPS), and chronoamperometry. LSVs and chronoamperograms were measured with alternating on-off illumination ($f = 40$ mHz, $T = 12.5$ s). As the light source, a commercially available 5 mm light emitting diode (LED) with an emission maximum of 468 nm was applied.

Linear sweep voltammograms were recorded in a 0.5 M Na₂SO₃ buffer solution at different pH values between 9 and 6. The solution pH was adjusted with H₂SO₄ and measured with a calibrated pH probe. During the LSV measurement, the bias potential was swept from –600 mV to 300 mV *versus* Ag/AgCl with a sweep velocity of 4 mVs^{–1}.

Intensity modulated photocurrent spectra were recorded in a 0.5 M Na₂SO₃ buffer solution at pH 7. Unless otherwise stated, the experiments were performed at a bias potential of 300 mV *versus* Ag/AgCl with applied *iR*-drop compensation of the potentiostat. The photon flux was modulated with a sine



wave function in the frequency range between 10 kHz and 1 Hz. The frequency dependent photon flux of the LED was determined by a Si photodiode (Fig. S36, ESI†).

Chronoamperograms were measured to demonstrate the applicability of the fabricated electrodes for photoelectrochemical sensing. All measurements were carried out in a 0.1 M $\text{HPO}_4^{2-}/\text{H}_2\text{PO}_4^-$ buffer at pH 8. Prior to increasing the analyte concentration in the electrolyte, all electrodes were immersed for one hour in the phosphate buffer solution. Then, a 10 mM solution of $\text{K}_3[\text{Fe}(\text{CN})_6]$ dissolved in phosphate buffer was added progressively. The bias potential was kept constant at -450 mV versus Ag/AgCl.

Results and discussion

Fabrication and morphological characterisation of NPL cryoaerogel photoelectrodes

CdSe NPLs with a thickness of approximately 1.2 nm, corresponding to 4 monolayers (MLs), were synthesised according to

a previously published procedure.³⁶ A TEM micrograph of the as-synthesised sample in hexane (Fig. 2A) reveals that NPLs with a quasi-rectangular morphology and edge lengths of $22.8 \text{ nm} \pm 2.9 \text{ nm} \times 7.1 \text{ nm} \pm 1.4 \text{ nm}$ were obtained. The full optical characterisation of the pristine NPLs is presented in the ESI† (Fig. S3). During the cryoaerogelation process, the density anomaly of water is utilised to form porous aerogels out of highly concentrated nanoparticle solutions.^{21,38} Therefore, a phase transfer of the NPLs from hexane to an aqueous phase was necessary. Water soluble NPLs were synthesised by exchanging the native oleic acid ligands against bi-functional MUA ligands.³⁷ The thiol group of the MUA ligand binds strongly to the surface of the NPLs, whereas the carboxyl group enables the water solubility at neutral to basic pH-values. Due to the ligand exchange with MUA, a bathochromic shift and a weakening of the excitonic absorption features of the NPLs are observed, as can be seen in the UV/vis spectra (Fig. 2B).

Subsequently, the aqueous NPL solution was dropped into a mold created out of adhesive tape on functionalised ITO glass. The electrode was then dipped rapidly into liquid nitrogen to

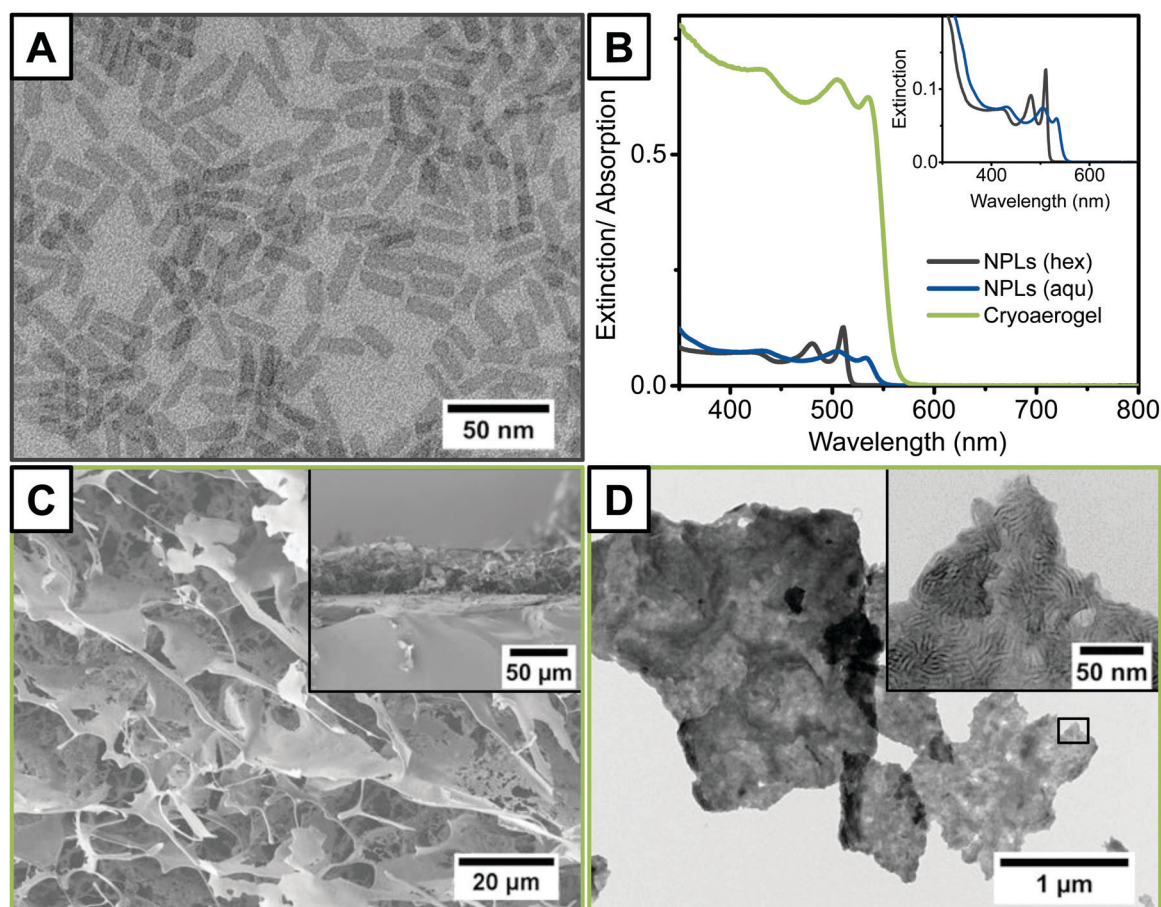


Fig. 2 Morphological and optical characterisation of the NPL building blocks (A and B) and the cryoaerogel films (B–D). (A) TEM micrograph of as-synthesised CdSe NPLs with a thickness of 4 MLs. (B) Extinction spectra of as-synthesised CdSe NPLs (grey) and phase-transferred CdSe NPLs (blue) measured at the same Cd concentration of $41 \mu\text{M}$, and the absorption spectrum of a NPL cryoaerogel film on an ITO coated glass electrode ($20 \mu\text{L cm}^{-2}$, 28 mM Cd concentration, $1 \times 10^{-2} \text{ M KOH}$). The inset shows a magnification of the OD region between 0 and 0.2 for a better comparison of the NPL spectra. Normalised spectra of all three samples can be found in the ESI† (Fig. S5). (C and D) SEM (C) and TEM (D) micrographs of the respective NPL cryoaerogel in different magnifications. The inset in (C) shows the cross-section of a CdSe NPL cryoaerogel film on an ITO-coated glass electrode.



shock-freeze the NPL solution and to create a large number of small ice crystallites. Finally, the ice was removed by lyophilisation. To ensure the formation of stable cryoaerogel thin films, the ligand concentration in the employed nanoparticle solution needs to be sufficiently low.²¹ If the ligand concentration is too high, sheet-like structures typical for cryoaerogels are still formed (Fig. S23, ESI†), but they are only weakly attached to the glass electrode surface. The electrode surface was functionalised with MPTMS prior to cryoaerogelation to improve the wettability of the surface and to facilitate the (electrical) interconnection between the NPLs and the electrode. However, if the concentration of free ligands in the applied NPL solution is much higher than the MPTMS concentration on the electrode surface, no driving force for the adsorption of the NPLs onto the electrode surface is present. The reduction of the concentration of the free ligands in the NPL solution was achieved by introducing a washing step prior to re-dispersion of the NPLs in the respective aqueous KOH solution. In this way, cryoaerogel films sufficiently attached to the ITO glass surface could be obtained (Fig. 2C, inset). The scanning electron microscopy (SEM) image of the film surface (Fig. 2C) illustrates the morphology of the CdSe NPL cryoaerogel films. The observed structure consisting of interconnected sheet-like assemblies which are partially scrolled to wires is comparable to previous reports on cryoaerogels based on other nanoparticle materials.^{21,38,39} Due to the directed stacking of the sheets, macroporous assemblies are obtained, as can be derived from the Kr physisorption measurements (Fig. S24, ESI†). The sheets themselves exhibit a filigree fine-structure with lots of holes. In the transmission electron microscopy (TEM) image (Fig. 2D), some single cryoaerogel sheets are visible. The higher magnification TEM image (Fig. 2D, inset) reveals that the sheets consist of stacked and folded NPLs, which are in close proximity to each other. Stacked NPLs perpendicular to the TEM grid appear as dark stripes whereas NPLs parallel to the TEM grid appear in a lighter grey, due to the differences in the TEM contrast. The NPL building blocks therefore seem to remain unaltered in the cryoaerogel formation process. The preservation of the crystal structure and the crystallite size was moreover confirmed by XRD (Fig. S11, ESI†). The positions of the main reflections of the cryoaerogel sample are only negligibly shifted towards higher 2θ compared to the aqueous NPL building blocks. In the UV/vis absorption spectrum of the cryoaerogel films (Fig. 2B), the typical sharp absorption features of CdSe NPLs are still present and only slightly shifted towards longer wavelengths by 2 nm (9 meV) compared to the aqueous NPL solution. This again confirms the retention of the nanocrystallinity and therefore the quantum confinement in the solid.^{18–20} Moreover it can be derived that no remarkable changes in the NPL thickness due to the cryoaerogelation have occurred. If etching of the NPL building blocks were to take place, a strong hypsochromic shift of the absorption edge would be expected, as was observed for a chemically fabricated CdSe NPL aerogel.²⁰ The slight bathochromic shift of the absorption maximum and the absorption onset, however, could originate either from enhanced electronic coupling due to much lower inter-particle distances or from growth of the crystallites.^{26,40} We moreover examined the

homogeneity of the produced cryoaerogel coatings by UV/vis absorption spectroscopy and SEM. The results are presented in the ESI† (Fig. S12–S14).

In order to investigate the factors determining the cryoaerogel structure, we varied a range of parameters, such as the film thickness, the NPL concentration, and the KOH concentration. The film thickness can be easily influenced by varying the volume of the applied NPL solution. The lowest solution amount that can be uniformly distributed in the 1 cm² mold is 10 μ L. If no shrinkage during the cryoaerogelation process occurs, the resulting film thickness would be 106 μ m. However, SEM images of the film cross-section (Fig. S15, ESI†) reveal a shrinkage of around 57%, so that a continuous film with an approximate thickness of 45.8 μ m \pm 6.2 μ m was obtained. The film thickness can be increased to 120.5 μ m \pm 12.9 μ m, if 40 μ L cm⁻² of the NPL solution is applied. A further increase of the solution volume leads to inhomogeneous films, which often partially detach from the substrate. The morphology of the films, however, can be influenced by varying the NPL concentration or the KOH concentration. By a variation of the NPL concentration, the thickness and density of the sheet-like assemblies on the substrate surface can be changed. Fig. 3 shows SEM images of cryoaerogels obtained from differently concentrated NPL solutions. In the case of low NPL concentrations, the electrode surface is only partially covered by the cryoaerogel sheets (Fig. 3A left). The sheets are moreover randomly oriented and possess a rough surface, probably due to the formation of pure KOH crystallites within the sheets. If a NPL solution with a Cd concentration of 28 mM is applied (Fig. 3B), the whole substrate is covered by randomly oriented sheets with a slightly smoother surface, but lots of holes. A further increase of the NPL concentration leads to partially ordered assemblies of sheets on the substrate surface (Fig. 3C). The sheets themselves are observed to be much smoother and thicker than in the case of lower NPL concentrations. As a last parameter, the concentration of aqueous KOH, which was used for the re-dispersion of the phase transferred NPLs, was varied. The KOH concentration was observed to mainly influence the morphology of the fabricated cryoaerogels. SEM investigations (Fig. S22, ESI†) show that the typical cryoaerogel morphology is only obtained for KOH concentrations of less or equal than 1×10^{-2} M. For higher KOH concentrations, dense and rather inhomogeneous particle layers are formed on the substrate (Fig. S22 left, ESI†). Within the dense coatings, large crystallites are visible, probably consisting of pure KOH. The completely different morphology of the obtained cryoaerogels could be attributed to the high amount of KOH, which might be able to disturb the formation of small ice crystals during the fast-freezing process. The morphological differences of cryoaerogels fabricated from lower concentrations of KOH (1×10^{-2} M, 1×10^{-3} M, 1×10^{-5} M, or 0 M) are much smaller and can be most easily identified in the TEM images (Fig. S23, ESI†). The TEM contrast of the sheets decreases with the KOH concentration, thus the KOH concentration mainly affects the sheet thickness in this concentration regime, so that the thinnest sheets are consequently formed at the lowest KOH concentration.



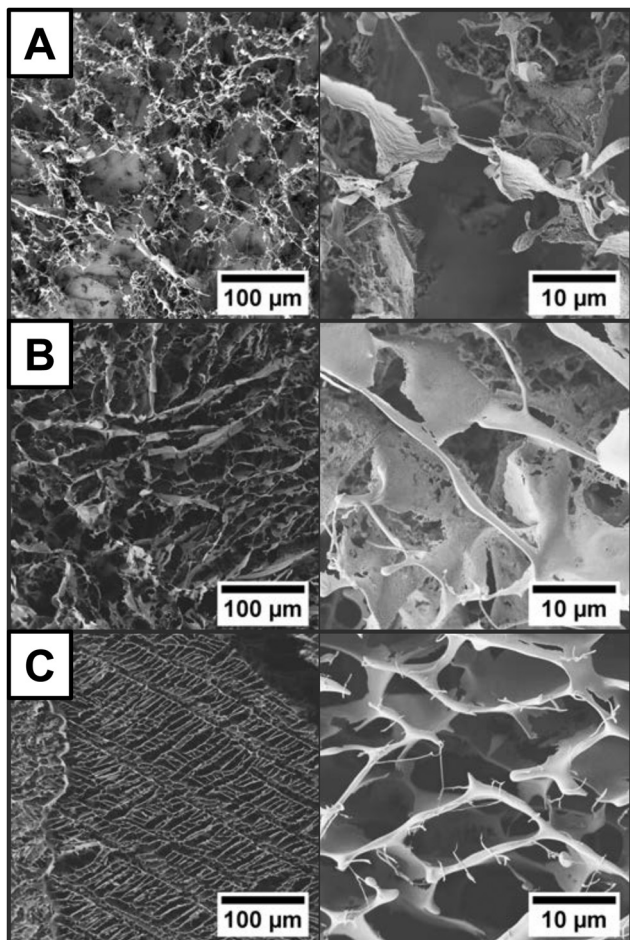


Fig. 3 SEM images of different CdSe NPL cryoaerogel coatings. The concentration of Cd²⁺ in the original aqueous NPL solutions increases from panel A to C (A: 10 mM, B: 28 mM, and C: 70 mM). For the preparation of each sample, 20 μL of the respective NPL solution was used. The KOH concentration was kept constant at 1×10^{-2} M.

Photoelectrochemical characterisation of NPL cryoaerogel photoelectrodes

The obtained cryoaerogel-coated photoelectrodes were photoelectrochemically characterised by means of linear sweep voltammetry (LSV) and intensity modulated photocurrent spectroscopy (IMPS). All measurements were carried out in a self-built measurement cell³⁴ using a three electrode setup comprising the NPL-coated electrode as the working electrode, a roughened Pt wire as the counter electrode, and a Ag/AgCl (3 M NaCl) reference electrode. As the electrolyte, a SO₃²⁻/HSO₃⁻ buffer at a concentration of 0.5 M was applied. Sodium sulfite acts as a hole scavenger and was already shown to effectively prevent photo-corrosion of various cadmium chalcogenide NPs.^{28,34,41,42}

LSVs were recorded in a bias potential range between -600 mV and 300 mV (*versus* Ag/AgCl), in which CdSe NPLs should be neither oxidised nor reduced (Fig. S25, ESI†).⁴³ The photoelectrodes were periodically illuminated with a 468 nm LED light source to evaluate the bias-dependent photoresponse of the prepared cryoaerogel films. Fig. 4A shows the LSVs of a CdSe NPL cryoaerogel film in comparison to LSVs of a CdSe NPL (sub-)monolayer and a CdSe NPL multilayer electrode. The preparation of the latter two photoelectrode types is described in the Experimental section. For all three electrode types, only positive photocurrents, which are related to sulfite oxidation (green arrows in Fig. S25, ESI†),^{9,34} are observed in the whole potential range. If the electrolyte pH is increased, however, also negative photocurrents can be recorded at negative bias potentials (Fig. S26, ESI†). The (sub-)monolayer electrodes show very low photocurrents in the nA-range, which may be explained by the sparse particle coverage of the electrode confirmed by the low absorption (Fig. S21, ESI†). An increase of the electrode surface coverage and light absorption by either applying multilayer or cryoaerogel coatings leads to orders of magnitude larger photocurrents. However, although the NPL amount deposited on the electrode was similar in both cases

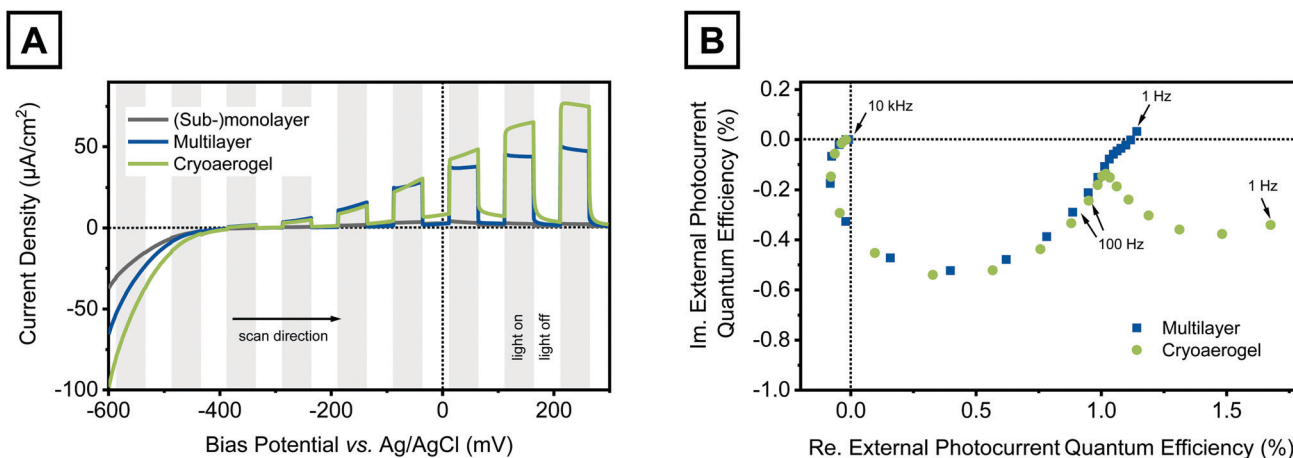


Fig. 4 Photoelectrochemical characterisation results of different photoelectrodes coated with CdSe NPLs at pH 7. For the multilayer and cryoaerogel preparation, 20 μL of an aqueous NPL solution (28 mM) dispersed in 1×10^{-3} M KOH was used. (A) LSVs of a CdSe NPL (sub-)monolayer (grey), a multilayer (blue), and a cryoaerogel (green) coated photoelectrode recorded under alternating irradiation with a blue LED. (B) IMPS spectra of a multilayer (blue squares) and a cryoaerogel (green circles) coated photoelectrode recorded at a bias potential of 300 mV.



(multilayer and cryoaerogel), cryoaerogel photoelectrodes show enhanced photocurrent generation compared to their multilayer counterparts. This observation could be attributed to photocurrent contributions of NPLs, which are not directly connected to the electrode surface but part of the cryoaerogel network. Due to their open and porous structure, CdSe NPL cryoaerogels can be penetrated more quickly by the electrolyte than the corresponding dense multilayers. In addition, low interparticle distances of the NPLs within the sheets were observed for the NPL cryoaerogels (Fig. 2C and D), so that movement of charge carriers between particles should be possible. In the particle multilayers, in contrast, the interparticle distances are expected to be greater than or equal to the length of the MUA ligands.⁴⁴

We further investigated the charge carrier transport in both NPL assemblies by IMPS. Over the course of the IMPS experiments, the on-off frequency of the LED is varied (in our case from 10 kHz to 1 Hz) and the photocurrent response of the investigated system is recorded.⁴⁵ In this way it is possible to distinguish between charge transfer processes occurring on different timescales, as long as their rate constants differ by at least one order of magnitude.³⁴ The IMPS responses of the multilayer and the cryoaerogel coated electrodes are displayed in Fig. 4B. In the Nyquist complex plane plots, nearly perfect semicircles are observed in the frequency range between 10 kHz and 25 Hz for both photoelectrode types. These semicircles are related to the two charge transfer processes that are involved in the generation of positive photocurrents (green arrows in Fig. S25, ESI†). The crossover from the third to the fourth quadrant at high frequencies shows that the electron injection into the substrate is slightly delayed with respect to the hole transfer to sulfite.⁹ In the lower frequency range, a second semicircle adjacent to the first one is observed for the cryoaerogel coated photoelectrode. This semicircle cannot be related to the afore-mentioned charge transfer processes involving solely the first particle monolayer. We attribute this second semicircle to bias-potential driven charge carrier transport across the illuminated NPL assemblies.^{32,33,45} In the relevant frequency range, this process competes with the surface recombination of trapped charge carriers and back-electron transfer processes.^{9,29,30} However, the presence of these loss mechanisms would be reflected in a return of the IMPS response to the real axis or even a crossover into the first quadrant (photocurrent leads the light) combined with no further increase or even a decrease of the photocurrent.^{9,29,30,45} A comparable behaviour is only observed for the multilayer electrodes, so that the afore-mentioned loss mechanisms gain increased relevance for this assembly type, whereas for the cryoaerogel photoelectrodes the charge carrier diffusion seems to be the clearly dominating process in the low frequency regime. However, the comparison of the LSVs of both electrodes suggests not only the existence of inter-particle charge carrier movement but also its bias-potential dependence, as the photocurrent difference between both electrodes increases with increasing bias potential. To further corroborate this presumption, additional IMPS spectra of the cryoaerogel electrode were recorded at 0 and 150 mV bias

potentials (Fig. S27, ESI†). These show that the ratio of the low frequency semicircle to the high frequency semicircle increases with the bias potential, hence the contribution of the charge carrier diffusion to the photocurrent increases likewise. For all three bias potentials it was moreover observed that the measured IMPS response does not return to the real axis (no phase lag of the photocurrent related to the photon flux), even at the lowest applied frequency of 1 Hz. This suggests that the investigated system has not reached its steady-state at that point,^{28,32} which is also reflected in the steady increase of the photocurrent during the illumination period (Fig. 4A, green curve).

The morphology of the cryoaerogel coatings was already shown to be strongly dependent on various manufacturing parameters. It is expected that the morphological differences will also be reflected in the photoelectrochemical performance. The film thickness mainly influences the amount of generated photocurrent, as can be seen from the LSVs (Fig. S28, ESI†). The photocurrent increases with increasing film thickness, however, no linear relation between both is observed. This implies that the efficiency of photoelectrodes with thinner films is remarkably higher than the efficiency of thicker film photoelectrodes. This observation could be explained by two synergistic effects. At first, the illumination intensity will be higher for particles close to the substrate compared to particles far away from the substrate, as the samples are typically illuminated from the substrate side only and as they are not optically thin. Furthermore, the IMPS response of the cryoaerogel electrode (Fig. 4B) already revealed that the photocurrent contribution of the particles directly attached to the substrate is slightly larger than the contribution of all other particles in total, as the charge carrier extraction from the outer layers is less effective due to the potential gradient and the occurrence of charge carrier recombination at the particle boundaries.

Fig. 5 shows the IMPS responses of cryoaerogel films with different thicknesses. The IMPS responses were recorded under backside and frontside illumination, respectively, at a bias potential of 300 mV. In all IMPS plots, two semicircles adjacent to each other were observed. Under backside illumination (Fig. 5A), the radius of the high frequency semicircle was observed to increase with increasing solution volume. However, the difference between the 10 μL sample (lowest thickness) and the 20 μL sample (medium thickness) is relatively small. This can be attributed to the fact that the density of particles directly attached to the electrode surface is similar for both electrodes, as in this specific case a nearly linear increase of the film thickness with the applied solution volume was observed (10 μL : 45.8 μm , 20 μL : 87.1 μm , derived from SEM cross-section measurements). For higher solution volumes, in contrast, a greater shrinkage of the cryoaerogels during the drying process occurred, so that the linear relation between the film thickness and solution volume is not longer valid (thickness of the 40 μL sample: 120.5 μm). This however leads to the formation of higher density cryoaerogels if large solution volumes (> 20 μL) are applied, and a therefore larger particle amount at the interface with the substrate. The measured IMPS response for the 40 μL sample is in line with this observation (a larger high frequency semicircle).



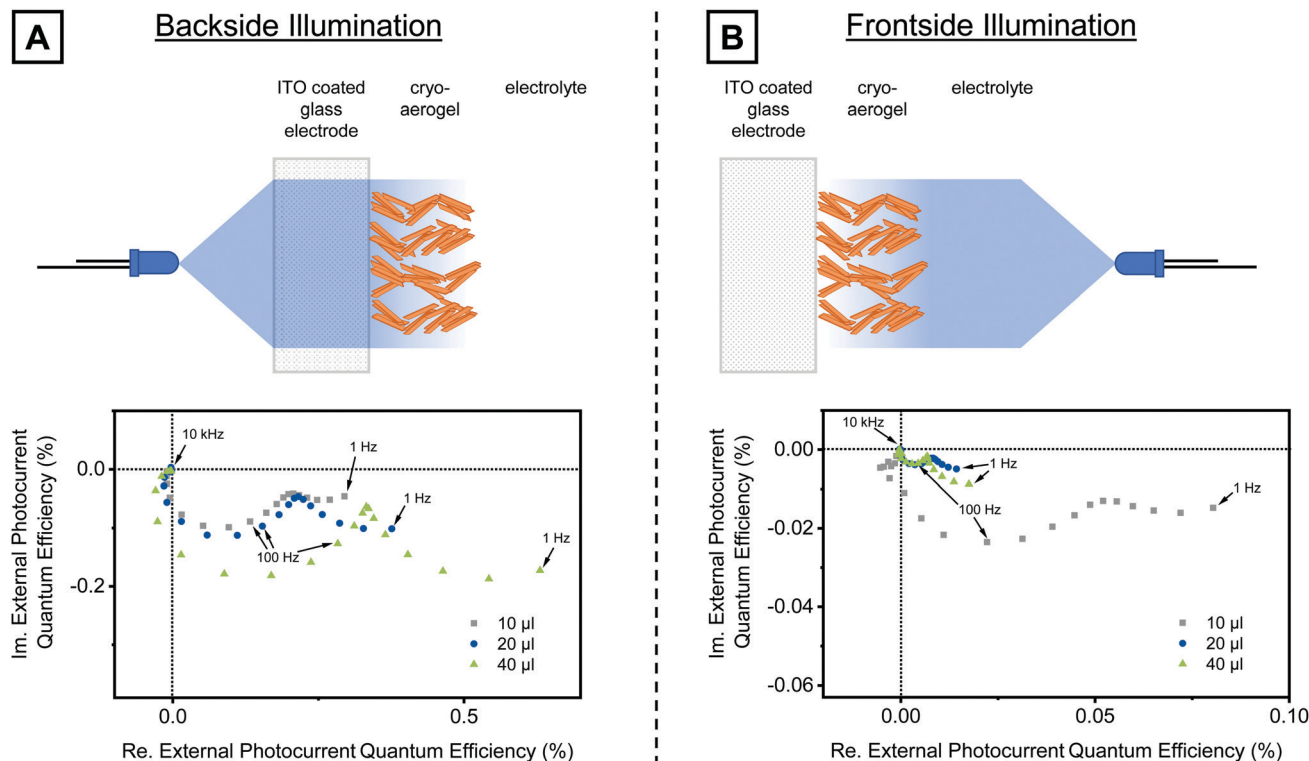


Fig. 5 IMPS responses of cryo-aerogel coated photoelectrodes with different film thicknesses. For the preparation of all samples, a 28 mM NPL solution dispersed in 1×10^{-2} M KOH was applied. The samples were irradiated either from the backside (A) or from the frontside (B). The sketches (top) illustrate the differences between both types of irradiation. All IMPS spectra (bottom) were measured at a bias potential of 300 mV.

The radius of the low frequency semicircle shows a strong dependence on the film thickness, too. The radius of this semicircle was observed to be largest for the highest solution amount; and the ratio between the low frequency and the high frequency semicircle also increases with increasing thickness. This implies that the photocurrent contribution of the charge carrier movement, reflected in the low frequency semicircle, increases with increasing film thickness. To further corroborate our interpretation of the low frequency semicircle to be related to the charge carrier movement, we performed similar IMPS experiments with reversed illumination geometry. Due to the frontside illumination, the light intensity gradient is reversed, so that fewer photons reach the particle–electrode interface. Therefore, the ratio of the second (low frequency) and the first (high frequency) semicircle should increase for samples illuminated from the frontside. This indeed was observed for all three film thicknesses as can be seen in Fig. 5B (bottom). From the IMPS plots it can moreover be derived that the highest photocurrent under frontside illumination is generated by the 10 μ L sample. The radii of both the higher and the lower frequency semicircles were observed to be much larger than in the case of the thicker cryo-aerogel films. The larger high frequency semicircle can be explained by the comparably low optical density of this cryo-aerogel film (Fig. S19 and S20, ESI[†]) and the therefore higher amount of photons passing the outer, less active layers of the cryo-aerogel and reaching the particle–substrate interface. The larger low frequency semicircle reveals

that not all NPLs of the outer layers contribute equally to the photocurrent. It is more likely that the majority of the charge carriers reaching the electrode surface by diffusion through the NPL network are generated rather close to the electrode surface. The particle–particle contacts in the networks can therefore be considered as diffusion barriers and preferred charge trapping and recombination sites.

Following the afore-mentioned observations and conclusions, an increase of the particle density close to the substrate surface should be beneficial for the photoelectrochemical performance of the cryo-aerogel coatings. Cryo-aerogels with a higher sheet density could be obtained by increasing the NPL concentration of the applied NPL solution (Fig. 3C). The LSV and the IMPS responses of cryo-aerogels fabricated from differently concentrated NPL solutions are shown in Fig. S29 and S30 (ESI[†]), respectively. The LSVs reveal that the photocurrent of these cryo-aerogels is much more closely related to the absolute amount of particles on the electrode than the photocurrent of cryo-aerogels with different film thicknesses. In the IMPS responses, an increase of the radius of the high frequency semicircle was observed with increasing NPL concentration. A particularly large difference was registered between the electrodes produced from the 28 mM and 70 mM NPL solutions. We attribute this observation to the morphological differences of both cryo-aerogels, especially to the alignment of the sheets in the case of the cryo-aerogel fabricated from the 70 mM NPL solution (Fig. 3C). Due to the long-range order of the sheets,



channels in the cryoaerogel structure are created, which facilitate the electrolyte diffusion through the cryoaerogel structure. The electrolyte diffusion should further be enhanced by the cracks in the cryoaerogel coating (Fig. S14C, ESI[†]), which probably result from shrinkage during the drying process.

In conclusion, the highest anodic photocurrents of up to $80 \mu\text{A cm}^{-2}$ were observed for the cryoaerogel coated photoelectrodes. This value is comparable to the one reported for a CdSe nanoparticle gel-film²⁶ but significantly larger than all compared values reported for CdSe and CdS nanoparticle mono- and multilayers.^{5,7,15,33,34,46} The photocurrent direction could be influenced by the solution pH, so that at higher pH also cathodic photocurrents were observed. By means of IMPS it was shown that the majority of the photocurrent is generated directly at the particle–electrode interface by tunnelling processes. However, the IMPS experiments also revealed remarkable photocurrent contributions of charge carrier diffusion processes in the case of the cryoaerogels. These processes are easily distinguishable from the latter ones due to the varying timescales.

Application of NPL cryoaerogel photoelectrodes for photoelectrochemical sensing

In order to prove the applicability of the fabricated cryoaerogel photoelectrodes for photoelectrochemical sensing, we measured the photocurrent response of the electrodes in the presence of differently concentrated ferricyanide solutions. Ferricyanide is a commonly known electron acceptor, which was already applied to demonstrate the electron transfer ability of illuminated semiconductor nanoparticles immobilised on metal photoelectrodes.⁵ The photocurrent responses of a multilayer and a cryoaerogel photoelectrode to ferricyanide solutions with concentrations between 0 mM (pure phosphate buffer) and 4.3 mM are shown in Fig. 6. It needs to be mentioned that

also a (sub-)monolayer coated electrode was exposed to ferricyanide solutions, but only negligible changes in the photocurrent were detected (Fig. S32, ESI[†]). For the multilayer and the cryoaerogel electrodes, however, increases of the photocurrent of $1.80 \mu\text{A cm}^{-2}$ and $6.63 \mu\text{A cm}^{-2}$, respectively, were observed in the investigated concentration range. The cryoaerogel photoelectrode showed a remarkably higher sensitivity towards the addition of ferricyanide, so that even concentrations lower than $5 \mu\text{M}$ could be detected accurately. In contrast, nearly no changes of the photocurrent were measured for the multilayer coated electrode in the low concentration range (Fig. 6B, inset). The multilayer electrodes even showed a slight decrease in the photocurrent at first, which can be explained by a continuous decrease of the blank photocurrent due to particle desorption. The poorer performance of the multilayer photoelectrode is probably related to the fact that the electrolyte as well as the analyte transport to the electrode surface is hampered by the dense nature of the NPL assembly. As revealed by the IMPS measurements, nearly no charge diffusion processes can take place in the multilayer assemblies, so that all photocurrent is generated within a few NPL layers which are within tunnelling distance to the substrate.

These conclusions reveal that the application of porous nanoparticle assemblies in photoelectrochemical sensors could lead to significant advances in their performance and their cost-effective production. Further improvements are expected by the application of heterostructured nanoparticles, which are often characterised by more efficient charge carrier separation and longer charge carrier lifetimes.^{1,47} Assemblies based on heterostructured nanoparticles could also be obtained by cryoaerogelation (Fig. S10, ESI[†]), as this method is not limited to a specific nanoparticle material or shape.^{21,38,39}

It needs to be mentioned that the developed cryoaerogel photoelectrodes are not selective towards ferricyanide but could

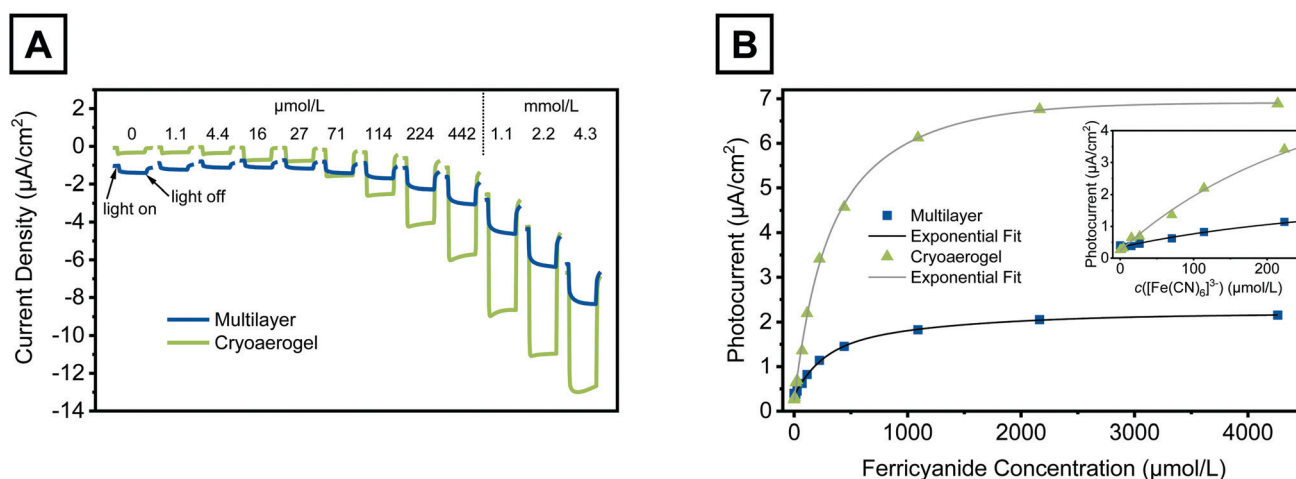


Fig. 6 Photocurrent responses of a CdSe NPL multilayer (blue) and a CdSe NPL cryoaerogel coated photoelectrode (green) to ferricyanide solutions with various concentrations. For the preparation of both electrodes, $20 \mu\text{L}$ of a 28 mM CdSe NPL solution in $1 \times 10^{-2} \text{ M}$ KOH was applied. The experiments were carried out in a 0.1 M $\text{HPO}_4^{2-}/\text{H}_2\text{PO}_4^-$ buffer (pH 8) at a constant bias potential of -450 mV . (A) Changes in the electrode photocurrent density due to irradiation in the presence of ferricyanide solutions. For each concentration, one representative light pulse with a pulse length of 12.5 s is shown. The total measurement time per concentration was 10 min . Note that the dark current increases with increasing ferricyanide concentration. (B) Dependence of the measured photocurrent on the ferricyanide concentration. Details of the applied fit functions are given in the ESI[†]. The inset shows the low concentration range up to a ferricyanide concentration of $250 \mu\text{M}$.



in principle detect any reduceable (soluble) analyte with a reduction potential located in the band gap of the CdSe NPLs. A selectivity towards specific analytes could be introduced into this sensing system by functionalisation of the NPLs with biological molecules^{48–52} or by the addition of shuttle molecules.^{53,54}

Conclusions

In summary, we have shown the preparation of CdSe NPL based cryoaerogel films on photoelectrodes and their photoelectrochemical characterisation. By the use of the cryoaerogelation method, CdSe NPL based cryoaerogel films with different thicknesses and morphologies could be obtained. The cryoaerogel films exhibited significantly higher photocurrents than comparable drop-cast films. The IMPS measurements revealed a close relation of the photocurrent enhancement to charge carrier movement, which could solely be proven for the cryoaerogel films. The highest photocurrent efficiencies were observed for the thinnest cryoaerogel films, as well as for cryoaerogel films prepared from highly concentrated NPL solutions. Therefore, IMPS was demonstrated to be a useful photoelectrochemical technique for the characterisation of charge transfer processes in nanoparticle assemblies, which could furthermore facilitate the rational design of these structures.

The obtained cryoaerogel photoelectrodes are moreover promising candidates for the fabrication of photoelectrochemical sensors. In a proof-of-principle experiment, the photoresponse of cryoaerogel photoelectrodes towards ferricyanide was studied. Although both photoelectrodes contained equal amounts of NPLs, cryoaerogel electrodes showed distinctly enhanced sensitivities as well as better photocurrent stabilities compared to drop-cast electrodes. These results suggest that porous NP assemblies such as (cryo)aerogels should be further evaluated as alternatives to particle monolayers and their dense assemblies to enhance the performance of photoelectrochemical sensors in the future.

Conflicts of interest

There are no conflicts of interest to declare.

Acknowledgements

The authors would like to acknowledge the German Federal Ministry of Education and Research (BMBF) within the framework of the program NanoMatFutur, support code 03X5525. Furthermore, the project leading to these results has in part received funding from the European Research Council (ERC) under the European Union's Horizon 2020 research and innovation program (grant agreement 714429). In addition, this work was funded by the Deutsche Forschungsgemeinschaft (DFG, German Research Foundation) under Germany's excellence strategy within the cluster of excellence PhoenixD (EXC 2122, project ID 390833453) and the grant BI 1708/4-1. A. S. is thankful for financial support from the Hannover School for

Nanotechnology (hsn). The authors moreover thank Rasmus Himstedt for help with TEM analysis, Armin Feldhoff as well as Jürgen Caro for providing the SEM and XRD facilities, and Mandy Jahns and Peter Behrens for krypton physisorption measurements.

References

- Z. Yue, F. Lisdat, W. J. Parak, S. G. Hickey, L. Tu, N. Sabir, D. Dorfs and N. C. Bigall, *ACS Appl. Mater. Interfaces*, 2013, **5**, 2800–2814.
- Y. T. Long, C. Kong, D. W. Li, Y. Li, S. Chowdhury and H. Tian, *Small*, 2011, **7**, 1624–1628.
- A. Devadoss, P. Sudhagar, C. Terashima, K. Nakata and A. Fujishima, *J. Photochem. Photobiol., C*, 2015, **24**, 43–63.
- G. L. Wang, P. P. Yu, J. J. Xu and H. Y. Chen, *J. Phys. Chem. C*, 2009, **113**, 11142–11148.
- C. Stoll, S. Kudera, W. J. Parak and F. Lisdat, *Small*, 2006, **2**, 741–743.
- W. Khalid, M. El Helou, T. Murböck, Z. Yue, J.-M. Montenegro, K. Schubert, G. Göbel, F. Lisdat, G. Witte and W. J. Parak, *ACS Nano*, 2011, **5**, 9870–9876.
- L. Sheeney-Haj-Ichia, J. Wasserman and I. Willner, *Adv. Mater.*, 2002, **14**, 1323–1326.
- J. Poppe, S. Gabriel, L. Liebscher, S. G. Hickey and A. Eychmüller, *J. Mater. Chem. C*, 2013, **1**, 1515–1524.
- S. G. Hickey and D. J. Riley, *Electrochim. Acta*, 2000, **45**, 3277–3282.
- T. Nakanishi, B. Ohtani and K. Uosaki, *J. Phys. Chem. B*, 1998, **102**, 1571–1577.
- X. Yu, Y. Wang, X. Chen, K. Wu, D. Chen, M. Ma, Z. Huang, W. Wu and C. Li, *Anal. Chem.*, 2015, **87**, 4237–4244.
- Z. Yue, W. Khalid, M. Zanella, A. Z. Abbasi, A. Pfreundt, P. Rivera Gil, K. Schubert, F. Lisdat and W. J. Parak, *Anal. Bioanal. Chem.*, 2010, **396**, 1095–1103.
- M. Hojeij, B. Su, S. Tan, G. Mériguet and H. H. Girault, *ACS Nano*, 2008, **2**, 984–992.
- G. Göbel, K. Schubert, I. W. Schubart, W. Khalid, W. J. Parak and F. Lisdat, *Electrochim. Acta*, 2011, **56**, 6397–6400.
- I. Willner, F. Patolsky and J. Wasserman, *Angew. Chem., Int. Ed.*, 2001, **40**, 1861–1864.
- E. Granot, F. Patolsky and I. Willner, *J. Phys. Chem. B*, 2004, **108**, 5875–5881.
- M. Hojeij, N. Eugster, S. Bin and H. H. Girault, *Langmuir*, 2006, **22**, 10652–10658.
- J. L. Mohanan, I. U. Arachchige and S. L. Brock, *Science*, 2005, **307**, 397–400.
- S. Sánchez-Paradinas, D. Dorfs, S. Friebe, A. Freytag, A. Wolf and N. C. Bigall, *Adv. Mater.*, 2015, **27**, 6152–6156.
- S. Naskar, J. F. Miethe, S. Sánchez-Paradinas, N. Schmidt, K. Kanthasamy, P. Behrens, H. Pfnür and N. C. Bigall, *Chem. Mater.*, 2016, **28**, 2089–2099.
- A. Freytag, S. Sánchez-Paradinas, S. Naskar, N. Wendt, M. Colombo, G. Pugliese, J. Poppe, C. Demirci, I. Kretschmer,



- D. W. Bahnemann, P. Behrens and N. C. Bigall, *Angew. Chem., Int. Ed.*, 2016, **55**, 1200–1203.
- 22 I. U. Arachchige and S. L. Brock, *J. Am. Chem. Soc.*, 2007, **129**, 1840–1841.
- 23 V. Lesnyak, S. V. Voitekhovich, P. N. Gaponik, N. Gaponik and A. Eychmüller, *ACS Nano*, 2010, **4**, 4090–4096.
- 24 V. Sayevich, B. Cai, A. Benad, D. Haubold, L. Sonntag, N. Gaponik, V. Lesnyak and A. Eychmüller, *Angew. Chem., Int. Ed.*, 2016, **55**, 6334–6338.
- 25 N. Gaponik, A. Wolf, R. Marx, V. Lesnyak, K. Schilling and A. Eychmüller, *Adv. Mater.*, 2008, **20**, 4257–4262.
- 26 L. Korala, Z. Wang, Y. Liu, S. Maldonado and S. L. Brock, *ACS Nano*, 2013, **7**, 1215–1223.
- 27 F. Lübke, J. F. Miethe, F. Steinbach, P. Rusch, A. Schlosser, T. Heinemeyer, D. Natke, D. Zok, D. Dorfs and N. C. Bigall, 2019, submitted.
- 28 J. F. Miethe, A. Schlosser, J. G. Eckert, F. Lübke and N. C. Bigall, *J. Mater. Chem. C*, 2018, **6**, 10916–10923.
- 29 J. C. Byers, S. Ballantyne, K. Rodionov, A. Mann and O. A. Semenikhin, *ACS Appl. Mater. Interfaces*, 2011, **3**, 392–401.
- 30 D. Klotz, D. S. Ellis, H. Dotan and A. Rothschild, *Phys. Chem. Chem. Phys.*, 2016, **18**, 23438–23457.
- 31 L. Dloczik, O. Ieperuma, I. Lauer, L. M. Peter, E. A. Ponomarev, G. Redmond, N. J. Shaw and I. Uhlendorf, *J. Phys. Chem. B*, 1997, **101**, 10281–10289.
- 32 P. E. de Jongh and D. Vanmaekelbergh, *J. Phys. Chem. B*, 1997, **101**, 2716–2722.
- 33 E. P. A. M. Bakkers, A. L. Roest, A. W. Marsman, L. W. Jenneskens, L. I. de Jong-van Steensel, J. J. Kelly and D. Vanmaekelbergh, *J. Phys. Chem. B*, 2000, **104**, 7266–7272.
- 34 J. F. Miethe, F. Lübke, J. Poppe, F. Steinbach, D. Dorfs and N. C. Bigall, *ChemElectroChem*, 2018, **5**, 175–186.
- 35 M. D. Tessier, P. Spinicelli, D. Dupont, G. Patriarche, S. Ithurria and B. Dubertret, *Nano Lett.*, 2014, **14**, 207–213.
- 36 S. Pedetti, S. Ithurria, H. Heuclin, G. Patriarche and B. Dubertret, *J. Am. Chem. Soc.*, 2014, **136**, 16430–16438.
- 37 T. Kodanek, H. M. Banbela, S. Naskar, P. Adel, N. C. Bigall and D. Dorfs, *Nanoscale*, 2015, **7**, 19300–19309.
- 38 T. Kodanek, A. Freytag, A. Schlosser, S. Naskar, T. Härtling, D. Dorfs and N. C. Bigall, *Z. Phys. Chem.*, 2018, **232**, 1675–1689.
- 39 A. Freytag, C. Günnemann, S. Naskar, S. Hamid, F. Lübke, D. Bahnemann and N. C. Bigall, *ACS Appl. Nano Mater.*, 2018, **1**, 6123–6130.
- 40 K. J. Williams, W. A. Tisdale, K. S. Leschkes, G. Haugstad, D. J. Norris, E. S. Aydil and X. Y. Zhu, *ACS Nano*, 2009, **3**, 1532–1538.
- 41 M. J. Berr, P. Wagner, S. Fischbach, A. Vaneski, J. Schneider, A. S. Susha, A. L. Rogach, F. Jäckel and J. Feldmann, *Appl. Phys. Lett.*, 2012, **100**, 223903.
- 42 M. J. Berr, A. Vaneski, C. Mauser, S. Fischbach, A. S. Susha, A. L. Rogach, F. Jäckel and J. Feldmann, *Small*, 2012, **8**, 291–297.
- 43 D. Spittel, J. Poppe, C. Meerbach, C. Ziegler, S. G. Hickey and A. Eychmüller, *ACS Nano*, 2017, **11**, 12174–12184.
- 44 A. Antanovich, A. Prudnikau, A. Matsukovich, A. Achtstein and M. Artemyev, *J. Phys. Chem. C*, 2016, **120**, 5764–5775.
- 45 L. M. Peter, J. Li, R. Peat, H. J. Lewerenz and J. Stumper, *Electrochim. Acta*, 1990, **35**, 1657–1664.
- 46 N. A. Kotov, I. Dekany and J. H. Fendler, *J. Phys. Chem.*, 1995, **99**, 13065–13069.
- 47 F. Rajadell, J. I. Climente and J. Planelles, *Phys. Rev. B*, 2017, **96**, 035307.
- 48 V. Pardo-Yissar, E. Katz, J. Wasserman and I. Willner, *J. Am. Chem. Soc.*, 2003, **125**, 622–623.
- 49 W. W. Zhao, P. P. Yu, J. J. Xu and H. Y. Chen, *Electrochem. Commun.*, 2011, **13**, 495–497.
- 50 X. Zhang, S. Li, X. Jin and S. Zhang, *Chem. Commun.*, 2011, **47**, 4929–4931.
- 51 G. L. Wang, J. J. Xu, H. Y. Chen and S. Z. Fu, *Biosens. Bioelectron.*, 2009, **25**, 791–796.
- 52 G. L. Wang, P. P. Yu, J. J. Xu and H. Y. Chen, *J. Phys. Chem. C*, 2009, **113**, 11142–11148.
- 53 C. Stoll, C. Gehring, K. Schubert, M. Zanella, W. J. Parak and F. Lisdat, *Biosens. Bioelectron.*, 2008, **24**, 260–265.
- 54 E. Katz, M. Zayats, I. Willner and F. Lisdat, *Chem. Commun.*, 2006, 1395–1397.

