


 Cite this: *RSC Adv.*, 2020, 10, 17892

Selenium modulates cadmium-induced ultrastructural and metabolic changes in cucumber seedlings†

 Hongyan Sun,^{‡*} Xiaoyun Wang,^{‡b} Huimin Li,^a Jiahui Bi,^a Jia Yu,^a Xianjun Liu,^a Huanxin Zhou^a and Zhijiang Rong^a

Intensive insight into the potential mechanisms of Se-induced Cd tolerance in cucumber seedlings is essential for further improvement of vegetable crop cultivation and breeding to obtain high yields and quality in Cd-contaminated soil. To reveal the ultrastructural and metabolic differences in Se-induced Cd tolerance, we examined the ultrastructures of chloroplasts and root cells and characterised 155 differentially expressed metabolites under Cd and/or Se stress using gas chromatography-mass spectrometry (GC-MS)-based metabolomics. Exogenous Se greatly relieved Cd-caused injuries to the ultrastructures of cucumber leaves and roots; for example, the shapes of chloroplasts treated with Cd + Se improved or even began to return to normal, the nuclei of root cells began to regenerate better and the chromatin was well-distributed compared with plants treated with Cd alone. Metabolite profiling revealed several intermediates of glycolysis and the tricarboxylic acid (TCA) cycle; also, some amino acids were up-accumulated in Cd + Se-treated cucumber seedlings and down-accumulated in Cd-treated cucumber seedlings, such as pyruvic acid, galactose, lactose, glutaric acid and alanine in leaves, glucose-6-phosphate and serine in roots, and lactic acid and glycine in both leaves and roots. These metabolites may play dominant roles in developing Se-mediated Cd tolerance. Moreover, a high level of sugars and polyols, amino acids and organic acids were up-accumulated in Cd-treated plants. Meanwhile, our data suggest that high accumulation of fructose, α -ketoglutaric acid, shikimic acid, fumaric acid and succinic acid in roots is a Cd-specific response, indicating that these metabolites are vital for cucumbers to develop Cd resistance. This study extends the current understanding of the mechanisms of Se in abating Cd contamination in cucumber and demonstrates that metabolomics profiling provides a more comprehensive view of the response of plants to heavy metals.

Received 29th March 2020

Accepted 20th April 2020

DOI: 10.1039/d0ra02866e

rsc.li/rsc-advances

Introduction

Heavy metal pollution caused by anthropogenic activities, such as mining, waste gas and water discharge, sewage irrigation and use of heavy metal products exceeding standards, is receiving increasing attention due to its public hazards to humans and the environment. Cadmium (Cd) is a nonessential element that is toxic to all organisms, including higher plants.¹ Cadmium-contaminated soil is a challenge for plants grown in it because Cd is easily absorbed by roots and transported to over-ground parts of plants.² Subsequently, Cd toxicity can affect

plant photosynthesis, respiration and absorption of water and nutrients, thus obviously reducing plant growth and crop yields or even causing death. Accordingly, it is imperative to reveal the phytotoxic mechanisms of Cd and to improve our methods of dealing with polluted soils.^{3,4}

In general, different metals tend to mix in the environment, and the effects of exposure to this mixture can be additive or antagonistic.⁵⁻⁷ Selenium (Se) is an essential element for organisms, while Cd is not; this leads to different accumulations of the two elements in plants. For example, exogenous application of Se could decrease Pb and Cd accumulation in lettuce; moreover, Se could abate Cd accumulation in rice, tobacco and cucumber,⁸⁻¹¹ and Se protects against metal-(loid)-induced toxicity and disease manifestations as well as salt stress.^{12,13} Meanwhile, our previous work also clearly stated that Se is capable of alleviating Cd-inhibited cucumber plant growth, chlorophyll content, and photosynthetic performance; it can also significantly reduce $\cdot\text{OH}$, H_2O_2 and malondialdehyde content as well as Cd accumulation in maize and cucumber. Similarly, Se stimulated the growth of cucumber by enhancing

^aCollege of Chemical and Biological Engineering, Taiyuan University of Science and Technology, Taiyuan 030024, P. R. China. E-mail: sunhongyan-8@163.com; Fax: +86 351 4399509; Tel: +86 15234173601

^bInstitute of Soil and Water Conservation, Shanxi Agricultural University, Taiyuan 030045, P. R. China

† Electronic supplementary information (ESI) available. See DOI: 10.1039/d0ra02866e

‡ Two authors contributed equally.



nutrient uptake, balancing carbohydrate contents and altering the expression abundance of some proteins.^{14–17}

Cucumber (*Cucumis sativus* L.) is a major economic vegetable crop with high consumption that is commonly planted worldwide. Cucumber is also an excellent source of protein, essential vitamins, carbohydrates, crude fibre and other nutrients humans need. With in-depth research on its traits, cucumber is used as a model plant in many studies. However, the research on Se-enhanced growth of cucumber plants mostly focuses on the fields of physiology, biochemistry and proteomics;^{10,16,17} the underlying stimulatory effects of Se based on the metabolic profiles and ultrastructures of cucumber are not fully understood.

Metabolomics is an important branch of systems biology; it is the quantitative measurement of small molecular compounds and metabolic components in biological specimens. Recently, metabolomics analysis has been widely applied to study the tolerance of plants to abiotic stress.¹⁸ Characterising the metabolome of an organism can offer novel insights into its functional performance status related to its phenotype, toxic effects induced by heavy metal toxicity,¹⁸ salt stress,¹⁹ temperature²⁰ and combined stress of drought and high temperature.²¹ In the present study, the ultrastructures of chloroplasts and root cells of cucumber seedlings under Cd and/or Se stress were observed, and the metabolic profiles were also analysed using gas chromatography – mass spectrometry (GC-MS) analysis of the leaves and roots of cucumber plants under Cd and/or Se stress to identify the predominant metabolites responsive to Cd and/or Se stress in cucumber. This study will provide insight for understanding the Se-induced ultrastructure and metabolism changes of cucumber plants grown under cadmium exposure.

Materials and methods

Plant materials and chemicals

Cucumber seeds (Jinyan 4) were purchased from Shanxi Agricultural Seed Station. Chemicals were all analytical grade reagents and were obtained from Beijing Chemical Works (Beijing, China), and all other chemicals used in this study were prepared with ultrapure water from a Millipore system unless otherwise specified. Hydrogen peroxide (H_2O_2 , $\geq 30\%$), sodium selenite (Na_2SeO_3 , $\geq 98\%$), and cadmium chloride (CdCl_2 , $\geq 98\%$) were used for the cucumber hydroponic culture. Na_2 -EDTA ($\text{C}_{10}\text{H}_{14}\text{N}_2\text{O}_8\text{Na}_2 \cdot 2\text{H}_2\text{O}$, $\geq 99\%$), nitric acid (HNO_3 , $\geq 70\%$) and perchloric acid (HClO_4 , $\geq 70\%$) were used for Cd and Se concentration determination, and the extracted acid mixture was prepared according to a volume ratio of HNO_3 vs. HClO_4 of 5 : 1. Methanol (CH_3OH , $\geq 99.5\%$) extraction liquid ($V_{\text{methanol}} : V_{\text{H}_2\text{O}} = 3 : 1$) and 1 mg mL^{-1} ribitol aqueous solution ($\text{C}_5\text{H}_{12}\text{O}_5$, $\geq 99\%$) were used for metabolite extraction. Bis(trimethylsilyl)trifluoroacetamide (BSTFA, $\text{C}_8\text{H}_{18}\text{F}_3\text{NOSi}_2$) reagent (99%, with 1% chlorotrimethylsilane (TMCS), v/v), and 20 mg mL^{-1} (in pyridine, $\text{C}_5\text{H}_5\text{N}$, $\geq 99\%$) methoxyamine hydrochloride (CH_6ClNO , $\geq 98\%$) were used for derivatization of metabolites. The GC/MS glass vials used for metabolite detection were purchased from Sigma-Aldrich (Beijing, China).

Cucumber hydroponic culture

Seeds of Jinyan 4 cucumber were sterilized in 2% H_2O_2 for 15 min and washed with deionized water seven times before germination. The experiment protocol of germination, seedling transplant and culture was similar to our previous study.¹⁷ This experiment was conducted in the greenhouse of Taiyuan University of Science and Technology, Taiyuan, China.

Treatments and sampling

Based on specific preliminary dose tests, four treatments were formed on the 7th day after transplanting: (1) control, basal nutrient solution (BNS); (2) Se (as Na_2SeO_3), BNS + 3 μM Se, where Se was added on the 6th day after transplanting; (3) Cd (as CdCl_2), BNS + 50 μM Cd; and (4) Cd + Se, BNS + 50 μM Cd + 3 μM Se, where Se was added on the 6th day after transplanting and replaced with Cd + Se on the second day. There were six replicates for each treatment. After seven days of treatment, plants were sampled from each treatment and each replicate, and all plants were washed thoroughly with deionized water; then, the leaves and roots were collected in accordance with Kim and Verpoorte's description²² and stored at -80°C for metabolite extraction.

Cd and Se concentration determination

After sampling, roots for element determination were soaked in 20 mM Na_2 -EDTA for 20 min and then rinsed in deionized water. All samples were dried at 70°C until constant weight. Dried samples were powdered and digested in the acid mixture ($\text{HNO}_3 : \text{HClO}_4$, 5 : 1, v/v).¹⁶ The Se and Cd concentrations were determined by inductively coupled plasma atomic emission spectroscopy (ICP-AES) (SPS 1200 VR, Seiko Co., Ltd., Japan).

Ultrastructural examination of leaves and roots

The ultrastructures of the leaves and roots were observed after seven days of treatment; three biological replicates were collected and handled according to Sun *et al.*²³ The specimens were mounted on copper grids and viewed by a transmission electron microscope (JEOL JEM-1230 EX, Japan) at 12 kV with working distances of 15 and 10 mm, respectively.

Metabolite extraction, derivatization and detection

Cucumber leaf and root metabolites were extracted as follows: frozen tissues were taken into 2 mL centrifuge tubes and extracted with 0.4 mL extraction liquid ($V_{\text{methanol}} : V_{\text{H}_2\text{O}} = 3 : 1$); then, 20 μL of ribitol (1 mg mL^{-1} stock in ultrapure water) was added as an internal standard to the sample. The mixture was homogenized in a grinding mill with small steel balls at 45 Hz for 4 min, then ultrasonically processed for 5 min in an ultrasonic machine with ice water; the above procedures were repeated twice. The above mixture was centrifuged at 13 000 rpm for 15 min at 4°C , and the supernatant (0.35 mL) was transferred into a GC/MS glass vial.

The samples were dried without heating in a vacuum concentrator, followed by adding 40 μL of methoxyamine hydrochloride (20 mg mL^{-1} in pyridine), and then incubated at 80°C for 30 min. Finally, 50 μL BSTFA reagent (with 1% TMCS, v/



v) was added to the sample aliquots, which were then incubated for 2 h at 70 °C.

GC-MS analysis was carried out on an Agilent 7890 gas chromatograph system coupled with a Pegasus HT time-of-flight mass spectrometer; the system utilized a DB-5MS capillary column. 1 μ L derivatized extract of each sample was injected into the capillary. The temperature-rise was programmed according to the study by He *et al.*²⁴

Data analysis

The R software platform (<http://cran.r-project.org/>) and Tag-Finder software were applied for extraction of raw signals, filtering of the data baselines, deconvolution analysis, peak alignment, peak identification and integration of the peak areas.²⁵ For each identified metabolite, log-transformed response ratios were calculated before the statistical assessment; the expressive abundance of ≥ 1.5 -fold increase or ≤ 0.5 -fold decrease were set as the criteria (*e.g.* Cd + Se *vs.* Cd, or Cd *vs.* control). Differentially expressed metabolites were identified by Simca-P software (version 11.5) by employing the orthogonal projections to latent structures discriminant analysis (OPLS-DA) model; also, some metabolites were searched in available compound libraries, such as KEGG. The principal component analysis (PCA) and the hierarchical clustering analysis (HCA) were performed using the MetaboAnalyst webpage,²⁶ and the

metabolic pathway was established according to the KEGG metabolic database.

Results

Cd concentration in cucumber seedlings under Cd and Se application

In the control and Se treatments, the Cd concentration was below the detection limit and consequently is not shown in Table S1.† Exogenous Se (Cd + Se) prominently reduced the concentration of Cd by 23.8% and 36.5% in leaves and roots, respectively, compared with Cd treatment alone. On the other side, Cd exposure remarkably decreased both leaf and root Se concentration compared to Se treatment alone; no significant differences were observed between Cd treatment alone and the control, which were below the detection limit.

Effects of exogenous Se on the ultrastructure of chloroplasts of cucumber seedlings under Cd stress

Scanning electron microscopy (SEM) observations showed that there was no clear difference between the control and sole Se treatments; the chloroplast stroma of the cucumber leaf cells was dense, and the lamellae of the grana thylakoids were stacked regularly and formed a continuous whole with the stroma lamellae. Moreover, there were many starch grains in the lamellae

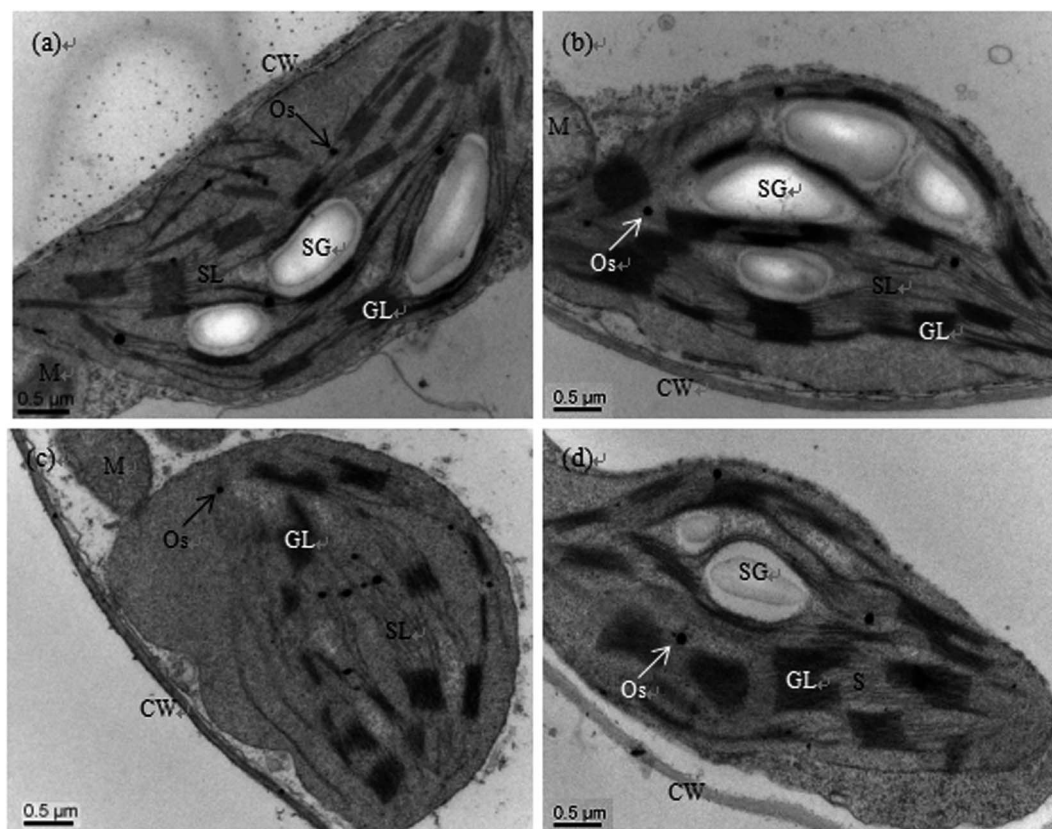


Fig. 1 Transmission electron micrographs of chloroplasts of cucumber seedlings cultured in basic nutrition solution (BNS, CK, (a)), BNS + 3 μ M Se (Se, (b)), BNS + 50 μ M Cd (Cd, (c)), and BNS + 50 μ M Cd + 3 μ M Se (Cd + Se, (d)), respectively. Scale bar = 0.2 μ m. CW: cell wall, M: mitochondrion, GL: granal lamellae, Os: osmiophilic plastoglobuli, SG: starch grain, SL: stromal lamellae. The figure is representative of three different experiments.



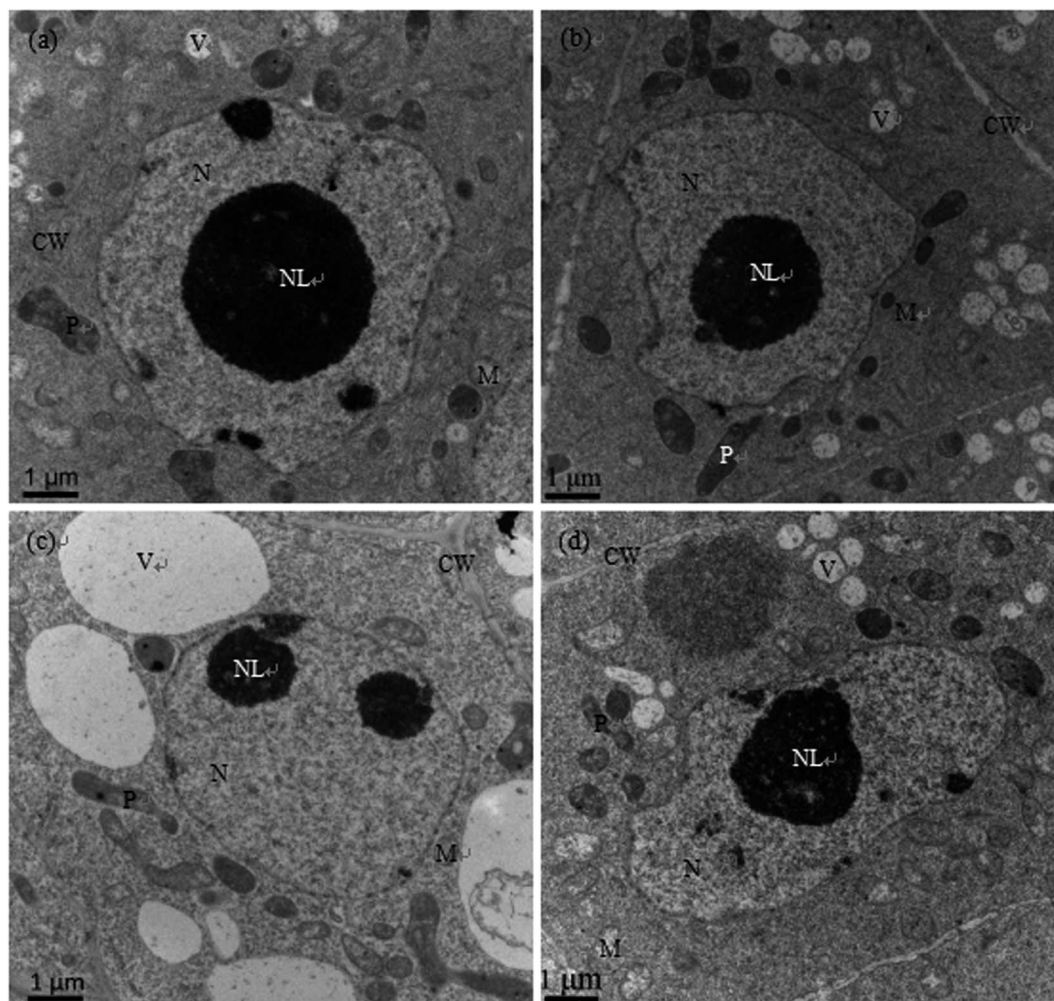


Fig. 2 Transmission electron micrographs of root cells of cucumber seedlings cultured in basic nutrition solution (BNS, CK, (a)), BNS + 3 μM Se (Se, (b)), BNS + 50 μM Cd (Cd, (c)), and BNS + 50 μM Cd + 3 μM Se (Cd + Se, (d)), respectively. Scale bar = 1 μm . CW: cell wall, M: mitochondrion, N: nucleolus, NL: nucleolus, P: plastid, V: vacuole. The figure is representative of three different experiments.

(Fig. 1a and b). However, the ultrastructures were deteriorated in the chloroplasts of plants treated with Cd, e.g. the chloroplasts become oval or round, the cytoplasm became sparse, the membrane systems became fuzzy, the stroma lamellae swelled, the thylakoid lamellae became loose, some lamellae even degraded, and the number of starch grains was reduced (Fig. 1c). Although the stromal lamellae and grana were still swollen, similar to Cd treatment alone, addition of exogenous Se (Cd + Se) prevented these Cd-induced deterioration changes to the chloroplasts; the shape of the chloroplasts under Cd + Se treatment became normal, and the structure of the thylakoid membranes was also restored. Additionally, the number of starch grains increased compared with Cd treatment alone (Fig. 1d).

Effects of exogenous Se on the root cell ultrastructures of cucumber seedlings under Cd stress

As shown in Fig. 2a and b, the nuclear structures of cucumber root cells under control and Se treatment alone were normal; the nuclei were nearly round, the nuclear membranes were complete and smooth, the nuclear cytoplasm was uniform, and

there were abundant organelles and vacuoles in the cytoplasm. However, after Cd treatment, the root meristematic cells exhibited obvious ultrastructural changes; the cell morphology changed, the cell walls thickened, the karyotheca was depressed and deformed, the number of vacuoles significantly decreased while their sizes increased, the cell nuclei even cracked, the mitochondria were swollen and the plastids contained fewer cristae (Fig. 2c). In the presence of Se (Cd + Se), the nuclei and karyotheca were better formed, and chromatin was distributed more uniformly; the nuclear morphology and chromatin returned to normal conditions.

The ultrastructures of root meristem cells exhibited obvious changes after Cd stress, with distorted cells, thickened cell walls, plastids with fewer cristae, swollen mitochondria, increased vacuolar size, and cracked nuclei and karyotheca. In the presence of Se (Cd + Se), the nuclei and karyotheca were better formed, the cytoplasm was denser, and the vacuolar size and the numbers of mitochondria cristae and plastids improved compared with Cd treatment alone (Fig. 2d).



Table 1 List of metabolites in leaves of cucumber seedlings whose relative fold changes were significantly down-accumulated (≤ 0.5) after Cd treatment and up-accumulated (≥ 1.5) or unchanged ($0.5 < \text{and} < 1.5$) after Cd + Se-treatment

Metabolite name	Similarity	R.T. ^a	Mass	VIP ^b	P value ^c	Fold change ^d		Pathway
						Cd vs. control	Cd + Se vs. Cd	
Pyruvic acid	927	7.2052	174	1.87353	0.01560	0.35	1.98	Glycolysis
Galactose 1	939	17.7571	319	2.00540	0.00810	—	2.40	Glycolysis
Lactose 1	801	24.6819	204	1.66282	0.03241	—	4.99	Glycolysis
Lactic acid	968	7.3206	117	1.90526	0.01573	—	0.72	TCA cycle
Oxalic acid	704	8.3484	147	1.96350	0.00734	—	1.22	TCA cycle
3-Hydroxypropionic acid 1	757	8.5775	177	2.43025	0.00011	—	4.59	TCA cycle
2,3-Dimethylsuccinic acid	395	11.4907	221	1.82082	0.02495	—	1.21	TCA cycle
Glutaric acid	757	12.2118	55	2.52714	0.00002	—	7.06	TCA cycle
Citramalic acid	921	13.0089	247	1.82753	0.01967	—	1.84	TCA cycle
Glycero	904	10.3819	117	1.89634	0.01340	0.44	1.23	Sugars and polyols
3-Methylamino-1,2-propanediol 2	464	11.7196	117	1.73584	0.01805	—	1.19	Sugars and polyols
D-Glycerol 1-phosphate	871	16.4002	299	1.65905	0.04984	—	1.75	Sugars and polyols
Glucoheptonic acid 3	673	20.1423	319	2.14536	0.00387	0.46	2.59	Sugars and polyols
Phytol	972	20.5121	143	2.17178	0.00227	0.50	1.91	Sugars and polyols
Melibiose 2	840	26.0556	361	1.95062	0.01075	—	4.56	Sugars and polyols
Alanine 1	957	7.9520	116	2.01987	0.00487	0.41	1.51	Amino acid
Glycine 2	947	10.8449	174	2.41138	0.00015	0.29	4.47	Amino acid
Aminomalonic acid	676	12.9948	218	2.32434	0.00287	0.13	5.91	Amino acid
Palmitoleic acid	877	19.1547	55	1.75218	0.02081	—	1.43	Lipids
Linoleic acid	923	20.8606	337	1.83842	0.01769	—	1.90	Lipids
4-Hydroxybutyrate	819	9.9014	233	2.47526	0.00004	—	4.45	Others
Nornicotine	431	13.9813	142	1.93520	0.00797	—	2.30	Others
Phthalic acid	504	15.8280	304	1.77004	0.04181	0.28	2.94	Others
N-Acetyl-beta-D-mannosamine 4	771	19.8795	319	1.95543	0.00945	0.32	2.82	Others

^a R.T. represents the retention time. ^b VIP = variable importance projection, metabolites (VIP > 1) are listed in the table. ^c P values were calculated according to Student's *T*-test. ^d Fold change is represented as the ratio of the peak intensities for the corresponding treatments ($n = 6$), —: represented, not detected.

Metabolic changes of cucumber under exogenous Cd and Se exposure

To reveal the molecular mechanisms of Se-mediated underlying Cd tolerance in cucumber seedlings, the effects of Cd (50 μM) and/or Se (3 μM) on the metabolic changes in the leaves and roots were analysed. The total ion chromatograms (TICs) of the leaves and roots of 36 cucumber samples showed that there were apparent chromatographic differences among the different treatments, including Cd and/or Se treatment and the control (Fig. S1†). According to heatmap and PCA analysis (Fig. S2 and S3†), obvious separation among the different treatments was detected. The leaves of the control and treated plants (*i.e.* Cd, Cd + Se) were distinguished by PC1, representing 22.2% variation; however, in the roots, Cd treatment was separated from the control and Cd + Se treatments by PC1, explaining 22.9% of the variation. Moreover, Cd and Cd + Se in both leaves and roots were separated by PC2; they presented 12.3% and 17.8% variation, respectively (Fig. S3a and b†). At the same time, OPLS-DA clearly showed discrimination and separation among the control, Cd + Se, and Cd treatments both in leaves and roots (Fig. S4†).

Differently expressed metabolites (VIP > 1, $P < 0.05$) were identified, and the peak values of the control, Cd, and Cd + Se treatments were compared statistically. GC-TOF-MS analysis showed that a large number of metabolites were significantly

expressed both in leaves and roots among the control, Cd and Cd + Se treatments. Furthermore, prominent tissue differences of relative abundance were found; 24 and 26 metabolites were up-accumulated or unchanged by Cd + Se *vs.* Cd treatment alone and down-accumulated by Cd *vs.* the control in the leaves and roots, respectively (Tables 1 and 2). However, compared with the control, Cd treatment significantly up-accumulated 47 and 68 metabolites in leaves and roots, respectively (Tables 3 and 4).

Metabolic profiles in response to Cd and/or Se in cucumber leaves

The expression quantity of relative expressed metabolites among the control, Cd and Cd + Se treatments was evaluated by the fold change (FC) value. In the leaves of cucumber seedlings, 24 metabolites were up-accumulated or unchanged by Cd + Se *vs.* Cd treatment but down-accumulated by Cd treatment *vs.* the control (Table 1). According to the putative biochemical and physiological functions, these metabolites were mainly divided into six categories, namely TCA cycle (25%), sugars and polyols (25%), glycolysis (12.5%), amino acids (12.5%), lipids (8%) and others (17%) (Fig. S5a†). Among these 24 differently expressed metabolites, 18 metabolites showed higher expression after addition of Se (Cd + Se *vs.* Cd) to Cd-treated cucumber seedlings. The higher expressed metabolites may be related to Se-induced Cd tolerance in cucumber, which includes 3



Table 2 List of metabolites in roots of cucumber seedlings whose relative fold changes were significantly down-accumulated (≤ 0.5) after Cd treatment and up-accumulated (≥ 1.5) or unchanged ($0.5 < \text{and} < 1.5$) after Cd + Se treatment

Metabolite name	Similarity	R.T. ^a	Mass	VIP ^b	P value ^c	Fold change ^d		Pathway
						Cd vs. control	Cd + Se vs. Cd	
α -D-Glucosamine 1-phosphate	638	17.1326	226	1.63509	0.00164	—	0.50	Glycolysis
Glucose-6-phosphate 1	896	21.6314	387	1.39508	0.02454	—	0.57	Glycolysis
Glucose-6-phosphate 2	931	21.8916	387	1.23427	0.04055	—	0.60	Glycolysis
6-Phosphogluconic acid	670	22.5322	318	1.48791	0.00661	—	0.55	Glycolysis
Lactic acid	867	7.3366	219	1.88945	0.00009	0.36	4.09	TCA cycle
Ethanolamine	883	10.3063	86	1.51962	0.00503	—	0.76	Sugars and polyols
Ribose	931	15.4504	103	1.23105	0.03573	—	0.66	Sugars and polyols
Xylitol	804	15.6796	231	1.58847	0.00229	—	0.58	Sugars and polyols
Conduritol β epoxide 2	650	18.4594	220	1.52304	0.00415	—	0.58	Sugars and polyols
N-Acetyl-D-galactosamine 1	856	19.5938	87	1.61868	0.00126	—	0.57	Sugars and polyols
Ribulose-5-phosphate 1	758	19.9544	357	1.51388	0.00462	—	0.50	Sugars and polyols
Lactulose 1	832	24.6661	361	1.30364	0.03096	—	3.80	Sugars and polyols
Lactitol	707	25.3578	230	1.52403	0.00359	—	0.50	Sugars and polyols
Oxamic acid	566	10.1376	189	1.68048	0.00105	0.25	3.04	Amino acids
L-Homoserine 1	580	12.7268	218	1.07594	0.03957	0.09	5.21	Amino acids
Glycine 2	957	10.8446	174	1.84246	0.00034	0.59	2.17	Amino acids
Serine 1	953	11.5610	218	1.86332	0.00001	—	1.87	Amino acids
3-Hydroxy-palmitic acid	498	20.7420	299	1.22242	0.03691	—	0.63	Organic acids
O-Phosphorylethanolamine	914	16.6380	299	1.30504	0.02247	—	0.53	Organic acids
Succinate semialdehyde 1	292	9.1880	132	1.84506	0.00018	—	15.16	Lipids
2-Deoxyuridine	526	10.4501	170	1.16267	0.03924	—	0.52	Pyridine alkaloid
DL-Anabasine 1	632	12.1288	239	1.58278	0.00166	—	0.57	Pyridine alkaloid
Nicotinamide	467	13.4756	179	1.26266	0.03057	0.35	0.63	Pyridine alkaloid
Maleamate 2	449	13.8690	241	1.46397	0.00747	0.34	2.75	Pyridine alkaloid
2-Hydroxypyridine	908	7.0488	152	1.76756	0.00026	—	0.67	Pyridine alkaloid
N-Cyclohexylformamide 2	270	9.6684	227	1.61878	0.00111	—	0.66	Others

^a R.T. represents the retention time. ^b VIP = variable importance projection, metabolites (VIP > 1) are listed in the table. ^c P values were calculated according to Student's *T*-test. ^d Fold change is represented as the ratio of the peak intensities for the corresponding treatments ($n = 6$), —: represented, not detected.

glycolysis metabolites, pyruvic acid, galactose 1 and lactose 1; 1 TCA cycle-related metabolites, 3-hydroxypropionic acid 1; 4 sugars and polyols, D-(glycerol 1-phosphate), glucoheptonic acid 3, phytol and melibiose 2; 3 amino acids, alanine 1, glycine 2 and aminomalonic acid; 1 lipid, linoleic acid; and 4 others, including 4-hydroxybutyrate, nornicotine, phthalic acid, and *N*-acetyl-beta-D-mannosamine 4.

Compared with the control, 47 metabolites were up-accumulated under Cd treatment alone (Table 3 and Fig. S5c†), and the numbers of these metabolites in the different categories are as follows: amino acids (20), organic acids (8), sugars and polyols (6), glycolysis (3), lipids (2), TCA cycle-related metabolites (1) and others (7). The Cd-induced expression of some key metabolites was many-fold higher under Cd treatment vs. the control, such as L-cysteine, asparagine 1, oxalacetic acid, threitol, citrulline 1, citral, catechol, and maleamate 2; we assume that these metabolites are related to Cd accumulation.

Metabolic profiles in response to Cd and/or Se in cucumber roots

In roots, 26 metabolites were up-accumulated or unchanged by Cd + Se vs. Cd treatment and down-accumulated by Cd treatment vs. the control (Table 2), of which 31% were related sugars

and polyols and 19% were pyridine alkaloids; these metabolites are more likely to play crucial roles in Se-mediated Cd tolerance in cucumber. They also include functional metabolites related to glycolysis (15%), amino acids (15%) and several organic acids (8%), along with TCA cycle-related metabolites (4%), lipids (4%) and others (4%) (Fig. S5b†).

In addition, 68 metabolites were up-accumulated after Cd treatment in roots (Table 4 and Fig. S5d†). Of these, 25% of the metabolites were amino acids, 25% were sugars and polyols, and 19% were organic acids; 7% were related to glycolysis (*e.g.* pyruvic acid, glucose-1-phosphate, galactose 1), 4% were related to the TCA cycle (α -ketoglutaric acid, succinic acid, fumaric acid), 4% were lipids, and 15% were others, suggesting that Cd treatment induces significant metabolic changes in cucumber seedlings.

Discussion

Currently, Cd contamination remains a global environmental problem due to the strong mobility and toxicity of Cd. Plants grown in Cd-contaminated soil or irrigated by Cd-contaminated water usually contain large amounts of Cd that exceed standards. Furthermore, Cd easily accumulates in edible organs,



Table 3 List of metabolites whose relative fold changes were significantly up-accumulated (≥ 1.5) in Cd-treated leaves of cucumber seedlings

Metabolite name	Similarity	R.T. ^a	Mass	VIP ^b	P value ^c	Fold change ^d		Pathways
						Cd vs. control	Cd + Se vs. Cd	
D-Galacturonic acid 2	671	18.4902	292	1.70673	0.00117	1.61	—	Glycolysis
Galactonic acid	830	18.7519	333	1.30902	0.02551	2.60	—	Glycolysis
Galactonic acid	878	18.7944	292	1.51738	0.00999	1.51	—	Glycolysis
Oxalacetic acid	278	12.9308	68	1.37968	0.04399	299 957	—	TCA cycle
L-Threose 1	832	12.7645	205	1.42249	0.01424	1.64	—	Sugars and polyols
Threitol	749	13.3492	217	1.80221	0.00338	189 254	—	Sugars and polyols
D-Arabitol	775	15.9364	307	1.34576	0.03543	7.49	—	Sugars and polyols
Mannitol	942	18.1471	319	1.76594	0.00112	1.59	—	Sugars and polyols
Sedoheptulose	555	18.1988	204	1.61517	0.01827	4.27	—	Sugars and polyols
Sorbitol	865	18.2634	217	1.44971	0.01438	1.53	—	Sugars and polyols
Valine	966	9.57236	144	1.63117	0.00341	2.78	—	Amino acids
Carbobenzyloxy-L-leucine	332	10.0939	171	1.62983	0.00336	5.14	—	Amino acids
Isoleucine	955	10.6617	158	1.81261	0.00055	3.63	—	Amino acids
Proline	896	10.7342	142	1.75822	0.00091	2.36	—	Amino acids
Serine 1	947	11.5619	204	1.38756	0.01696	2.02	—	Amino acids
Cycloleucine 1	347	11.655	255	1.62231	0.00388	2.68	—	Amino acids
L-Allothreonine 1	607	11.8983	217	1.78923	0.00065	1.74	—	Amino acids
Threonine 1	954	11.8964	219	1.88911	0.00015	2.71	—	Amino acids
O-Acetylserine 1	519	12.0443	174	1.67359	0.00504	4.73	—	Amino acids
Aspartic acid	947	13.6334	232	1.50107	0.01207	2.46	—	Amino acids
L-Cysteine	685	14.0558	116	2.08554	0.00004	651 149	—	Amino acids
3-Aminoisobutyric acid 1	532	12.8712	174	1.58589	0.01316	1.60	—	Amino acids
β -Glutamic acid 1	395	14.6504	345	1.76216	0.00118	2.99	—	Amino acids
Glutamic acid	921	14.8229	246	1.41253	0.01601	1.94	—	Amino acids
Phenylalanine 1	890	14.9275	218	1.53758	0.01950	12.79	—	Amino acids
Creatine	573	15.0537	403	1.58464	0.01576	12.07	—	Amino acids
Asparagine 1	898	15.4162	116	1.40902	0.04445	11 038 471	—	Amino acids
Citrulline 1	905	17.1051	157	1.64987	0.01145	50.24	—	Amino acids
Lysine	908	18.1015	156	1.83055	0.00311	8.44	—	Amino acids
Spermidine 2	614	20.7375	200	1.38046	0.02642	4.00	—	Amino acids
2-Hydroxy-butanoic acid	252	8.34339	206	1.35095	0.04797	1.85	—	Organic acids
Malonic acid 1	596	9.31769	147	1.58595	0.00526	1.71	—	Organic acids
Aminoxyacetic acid	516	11.8209	247	1.49460	0.01333	1.99	—	Organic acids
Adipic acid	308	13.4852	111	1.38794	0.02267	4.90	—	Organic acids
Threonic acid	924	14.0775	292	1.33816	0.02717	1.58	—	Organic acids
Gentisic acid	454	16.6609	276	1.36258	0.03474	2.52	—	Organic acids
Terephthalic acid	329	16.8005	312	1.54372	0.00730	2.85	—	Organic acids
3,4-Dihydroxyphenylacetic acid	269	17.1885	223	1.22633	0.03820	2.75	—	Organic acids
Succinate semialdehyde 1	296	9.18755	132	1.44052	0.01368	1.70	—	Lipids
Citral	228	11.7854	164	1.66867	0.00997	10.99	—	Lipids
Hydroxyurea	463	9.86407	244	1.71827	0.00288	1.46	—	Others
Catechol	227	11.0355	180	1.34772	0.03911	33.49	—	Others
Malonamide 1	393	13.3798	101	1.76447	0.00064	9.48	—	Others
Maleamate 2	521	13.8687	241	1.92868	0.00100	2 436 864	—	Others
Flavin adenine degrad product	617	16.1693	174	1.72068	0.00893	5.52	—	Others
Pantothenic acid	862	18.7844	201	1.94644	0.00009	2.20	—	Others
Purine riboside	680	22.1714	217	2.00513	0.00000	2.18	—	Others

^a R.T. represents the retention time. ^b VIP = variable importance projection, metabolites (VIP > 1) are listed in the table. ^c P values were calculated according to Student's *T*-test. ^d Fold change is represented as the ratio of the peak intensities for the corresponding treatments ($n = 6$), —: represented, not detected.

which consequently causes adverse effects on human health through the food chain.^{27,28} Cucumber is a vegetable crop that is grown worldwide for safe food production and human health; reliable strategies for reducing cucumber Cd contamination and inducing plant tolerance to Cd are urgently desired. Researchers have found that for large-scale slightly or

moderately polluted farmlands, the addition of chemical substances, including allantoin,²⁹ selenium,³⁰ and hydrogen gas,³¹ can mitigate Cd toxicity and improve the growth of plants. Our previous studies showed that application of Se in hydroponic solution and soil could alleviate Cd toxicity by relieving lipid peroxidation of cucumber leaves induced by Cd stress,



Table 4 List of metabolites whose relative fold changes were significantly up-accumulated (≥ 1.5) in Cd-treated roots of cucumber seedlings

Metabolite name	Similarity	R.T. ^a	Mass	VIP ^b	P value ^c	Fold change ^d		Pathway
						Cd vs. control	Cd + Se vs. Cd	
Pyruvic acid	955	7.2073	174	1.61302	0.00014	1.51	—	Glycolysis
D-Glyceric acid	950	11.1479	189	1.72617	0.00009	3.58	0.44	Glycolysis
Glucose-1-phosphate	827	16.4631	217	1.59138	0.00024	1.58	0.59	Glycolysis
Shikimic acid	896	16.9190	204	1.41137	0.00268	1.79	0.52	Glycolysis
Fructose 1	807	17.5632	77	1.38707	0.00411	9.97	—	Glycolysis
Galactose 1	923	17.7558	319	1.09648	0.04012	2.64	0.39	Glycolysis
Succinic acid	932	10.9674	147	1.76705	0.00000	3.04	0.5	TCA cycle
Fumaric acid	964	11.4638	245	1.68692	0.00026	4.59	—	TCA cycle
α -Ketoglutaric acid	844	14.3078	198	1.72267	0.00000	2.83	0.43	TCA cycle
Erythrose 2	838	12.5637	205	1.62780	0.00070	3.13	0.62	Sugars and polyols
L-Threose 1	871	12.7616	205	1.63895	0.00008	3.78	0.62	Sugars and polyols
Digitoxose 1	435	14.5575	292	1.67296	0.00002	10.56	0.47	Sugars and polyols
Lyxose 1	782	15.1044	217	1.47580	0.00135	1.70	0.52	Sugars and polyols
Xylose 1	937	15.2770	103	1.55379	0.00188	1.78	0.46	Sugars and polyols
Fucose 1	797	15.9018	160	1.16512	0.02620	1.56	0.48	Sugars and polyols
Gluconic lactone 1	803	17.7089	220	1.64756	0.00004	2.74	0.57	Sugars and polyols
Sorbitol	869	18.2647	217	1.43477	0.00930	6.14	—	Sugars and polyols
Isopropyl-beta-D-thiogalactopyranoside	413	19.5198	204	1.67597	0.00002	3.29	0.17	Sugars and polyols
Myo-inositol	923	19.7238	217	1.37707	0.00483	1.54	0.43	Sugars and polyols
Glucoheptonic acid 3	686	20.0160	217	1.48899	0.00081	1.51	0.50	Sugars and polyols
D-Glucoheptose 1	745	20.0875	319	1.65849	0.00043	3.14	0.46	Sugars and polyols
DL-Dihydrospingosine 1	632	23.1955	321	1.42588	0.00820	2.20	0.5	Sugars and polyols
Sucrose	909	24.2913	451	1.29190	0.02344	36.11	—	Sugars and polyols
Galactinol 1	895	26.8080	204	1.59005	0.00014	3.24	0.30	Sugars and polyols
Maltotriose 1	660	30.4877	361	1.64543	0.00096	47.78	0.07	Sugars and polyols
Alanine 1	950	7.9552	116	1.63181	0.00006	2.18	—	Amino acids
N-Methyl-DL-alanine	638	8.9614	130	1.66118	0.00003	1.87	0.54	Amino acids
1-Aminocyclopropanecarboxylic acid	609	9.4863	202	1.66628	0.00037	2.93	0.55	Amino acids
Valine	967	9.5728	144	1.54758	0.00042	1.56	0.76	Amino acids
3-Hydroxynorvaline 2	368	11.5906	293	1.10472	0.03245	2.02	—	Amino acids
L-Allothreonine 1	635	11.9003	217	1.58211	0.00022	1.59	—	Amino acids
N-Ethylglycine 1	437	12.3651	218	1.32921	0.01241	2.15	—	Amino acids
β -Alanine 2	913	12.4680	248	1.67022	0.00003	1.69	0.42	Amino acids
N-Acetyl-L-leucine 1	459	13.5145	261	1.72048	0.00000	2.70	0.45	Amino acids
Aspartic acid	941	13.6366	232	1.38925	0.00415	1.71	—	Amino acids
Oxoproline	829	13.6978	258	1.60554	0.00016	1.64	0.60	Amino acids
4-Aminobutyric acid 1	930	13.7692	174	1.74058	0.00004	3.12	—	Amino acids
β -Glutamic acid 1	290	14.6480	345	1.48911	0.00443	3.20	0.00	Amino acids
Glutamic acid	917	14.8221	246	1.74821	0.00000	2.98	0.62	Amino acids
Glycocyanine 2	225	16.0810	273	1.72689	0.00000	3.55	0.57	Amino acids
Glutamine 1	661	16.5729	156	1.27931	0.02618	14 254 790	—	Amino acids
N-Acetyl-L-phenylalanine 2	760	17.1019	120	1.66929	0.00067	40 255 157	0.14	Amino acids
Glycolic acid	910	7.5776	177	1.22630	0.01784	1.55	—	Organic acids
Sulfuric acid	441	8.8714	281	1.44736	0.00198	1.60	—	Organic acids
Malonic acid 1	838	9.4241	147	1.69945	0.00033	24.56	0.43	Organic acids
4-Hydroxybutyrate	882	9.8991	233	1.50558	0.00080	4.13	—	Organic acids
Benzoylformic acid 1	634	10.4634	222	1.74493	0.00011	1 625 262	0.11	Organic acids
Tartronic acid	533	11.8036	247	1.61541	0.00170	6.17	0.37	Organic acids
Glutaric acid	817	12.2055	55	1.65598	0.00085	15.41	0.24	Organic acids
Threonic acid	883	14.0867	292	1.79358	0.00000	7.92	0.50	Organic acids
3-Hydroxy-3-methylglutaric acid	763	14.6068	109	1.74363	0.00000	2.27	0.57	Organic acids
2-Ketoadipate 2	359	15.3140	258	1.26494	0.02976	1 230 889	0.00	Organic acids
Ciliatine	290	16.2117	299	1.59016	0.00021	3.78	0.3	Organic acids
2-Amino-3-(4-hydroxyphenyl)propanoic acid 1	301	18.0784	267	1.49834	0.00622	60.64	—	Organic acids
Gluconic acid 1	903	18.8386	333	1.60328	0.00144	4.39	0.42	Organic acids
Citraconic acid 4	403	11.4894	221	1.69717	0.00001	1.63	0.75	Lipids
Pelargonic acid	603	11.6675	215	1.26183	0.02841	1 059 213	0.00	Lipids
4-Acetamidobutyric acid 2	187	13.3963	159	1.23334	0.01367	8.85	0.00	Lipids
Carnitine	296	9.6464	70	1.46006	0.00151	2.06	0.54	Others



Table 4 (Contd.)

Metabolite name	Similarity	R.T. ^a	Mass	VIP ^b	P value ^c	Fold change ^d		Pathway
						Cd vs. control	Cd + Se vs. Cd	
Hydroquinone	225	12.1846	174	1.17552	0.04772	1 112 417	0.00	Others
Methyl <i>trans</i> -cinnamate	372	12.2422	103	1.76747	0.00000		8.05 0.39	Others
4-Aminophenol 1	330	13.9446	254	1.39339	0.01315	4 224 720	0.24	Others
Malonamide 2	419	14.3802	329	1.52042	0.00072		3.68 0.61	Others
1,2-Cyclohexanedione 4	399	15.3965	171	1.67429	0.00002		7.06 0.46	Others
5,6-Dimethylbenzimidazole 2	269	17.1885	287	1.72488	0.00000		4.72 0.57	Others
<i>N</i> -Acetyl-β-D-mannosamine 4	725	19.8829	103	1.50778	0.00087		3.55 0.36	Others
Thioctamide 1	270	20.5994	174	1.25682	0.02745	97 517	0.00	Others
Guanosine	723	25.2860	245	1.14638	0.04856	3 700 082	—	Others

^a R.T. represents the retention time. ^b VIP = variable importance projection, metabolites (VIP > 1) are listed in the table. ^c P values were calculated according to Student's *T*-test. ^d Fold change is represented as the ratio of the peak intensities for the corresponding treatments ($n = 6$), —: represented, not detected.

abating reactive oxygen species (ROS) accumulation, improving antioxidase and ATPase activities, preventing photosynthetic machinery damage, balancing the concentrations of carbohydrate contents and nutrient elements, and further up-inducing photosynthesis, metabolism or stress-related proteins; this ultimately reduced Cd accumulation in plants and improved Cd tolerance of cucumber seedlings.^{16,17} The present research further indicates that exogenous Se can mitigate cucumber Cd concentration and translocation.

However, to date, the effects of exogenous Se on the ultrastructural and metabolic patterns of Cd-treated cucumber seedlings have not been studied. Accordingly, to better understand how cucumber adapts to Cd toxicity at the ultrastructural and metabolic levels, in this research, we carried out ultrastructural observation and metabonomics analysis of cucumber seedlings under Cd and/or Se treatment using TEM and GC-MS, respectively. The results revealed the possible differences in the ultrastructural and metabolic profiles of cucumber under Cd and/or Se treatment and the potential specific metabolites that are responsive to Cd and/or Se stress in cucumber seedlings.

Protective effects of exogenous Se on the ultrastructures of chloroplast and root cells damaged by Cd

The chloroplast is not only the location of photosynthesis but is also a sensitive organelle to Cd stress. The TEM results showed that the chloroplasts were deformed and damaged by Cd stress; moreover, in the chloroplasts, the arrangements of the grana and stromal lamellae were disordered, and their number was significantly reduced compared with the control (Fig. 1). These phenomena are similar to those observed in barley.²³ Additionally, our previous study reported that Cd stress significantly reduced the photosynthetic rate and chlorophyll content of cucumber.^{16,17} It can be concluded that Cd-induced changes in chloroplast structure may be the direct cause of damage to the photosynthetic system and the degradation of chlorophyll, which eventually leads to inhibition of photosynthesis. Also, Cd stress significantly reduced the accumulation of starch grains in chloroplasts, which may be caused by the decreased

photosynthetic capacity of chloroplasts or excessive energy consumption of cells to resist Cd stress. Keunen *et al.* also reported that during Cd exposure, *Arabidopsis* leaves mainly utilised their starch reserves to provide energy for stress defence.² According to the observation of the ultrastructures of root meristem cells, Cd stress injured the nuclear structures and cracked the karyotheca systems of the cucumber cells; it also reduced the number of vacuoles in the cucumber seedlings (Fig. 2). The addition of exogenous Se significantly alleviated the damage of the chloroplast and root cell structures caused by Cd stress; it recovered the damage of the chloroplast lamellar structure, increased the number of starch grains in the cucumber leaves, and effectively improved the stability and integrity of the nuclear membranes of root meristem cells (Fig. 1d and 2d), indicating that Se can protect the plant growth and ultrastructures of cucumber seedlings from Cd-induced damage. Accordingly, exogenous Se may be beneficial to improve photosynthesis efficiency; as reported in our previous work, exogenous Se (Cd + Se) prominently increased the chlorophyll a, chlorophyll b, and chlorophyll a + b content and improved photosynthetic performance, with higher Pn, Gs, and Tr, in plants treated with Cd + Se compared with those treated solely with Cd.^{15,16} It can be concluded that the membrane integrity effect of Se addition is a fundamental protective mechanism for Se-induced tolerance of Cd toxicity in cucumber.

Exogenous Se utilizes different strategies at the metabolome level for combating Cd stress

To date, no detailed metabolic evaluation of Se-improved cucumber tolerance to Cd contamination has been fully explored. In the present research, the effects of exogenous Se on the large-scale metabolic profiling of cucumber leaves and roots under Cd stress were examined. PCA analysis and the OPLS-DA model were used to identify all significantly different metabolites (VIP > 1, $P < 0.05$) among the three treatments (Fig. S3 and S4†); the results showed that there was a clear separation between Cd and the control as well as between Cd + Se and Cd



treatment, indicating that Se and/or Cd exposure affected cucumber seedlings to a certain extent. By peak value comparison among the control, Cd and Cd + Se treatments, we found that 50 metabolites were significantly up-accumulated or unchanged by Cd + Se *vs.* Cd treatment and down-accumulated by Cd *vs.* the control, and 115 metabolites were significantly up-accumulated by Cd *vs.* the control. Furthermore, these differently expressed metabolites were identified by GC-TOF-MS; in addition, coupled with metabolic pathway analysis, a comprehensive schematic of Se-mediated tolerance to Cd toxicity in cucumber seedlings was proposed (Fig. 3), which may provide some new insight into the potential mechanisms underlying Se-improved tolerance to Cd contamination.

Se + Cd treatment accumulated relatively higher levels of glycolysis metabolites in leaves, including pyruvic acid, galactose 1 and lactose 1 (Table 1). Pyruvic acid is an important intermediate in the sugar metabolism of all living cells and is also a key intermediate in the mutual transformation of a large number of substances *in vivo*, involving in several metabolic pathways. Generally, pyruvic acid can be made from glucose by glycolysis

and converted back into carbohydrates (such as glucose) by gluconeogenesis or transformed into fatty acids by reaction with acetyl-CoA. Moreover, α -D-glucosamine 1-phosphate, glucose-6-phosphate 1, glucose-6-phosphate 2 and 6-phosphogluconic acid were up-accumulated in roots by Cd + Se treatment and down-accumulated under Cd treatment alone (Table 2); these are intermediates of the conversion of glucose to pyruvic acid through glycolysis. Lactose can be made from glucose and galactose, and lactose can also be degraded into galactose.

TCA cycle-related metabolites were largely responsible for the Se-induced resistance against Cd stress in cucumber. In leaves, lactic acid, oxalic acid, 3-hydroxypropionic acid 1,2,3-dimethylsuccinic acid, glutaric acid and citramalic acid were up-accumulated under Cd + Se *vs.* Cd treatment and down-accumulated under Cd treatment *vs.* the control (Table 1). Lactic acid is not only a metabolite produced by anaerobic metabolism but is also an important energy carrier. Glucose will be converted to lactic acid and then enter the tricarboxylic acid cycle (TCA cycle). Thus, lactic acid is probably the most important energy source in the TCA cycle. The data showed that lactic acid



Fig. 3 Schematic of Cd + Se or Cd stress-responsive primary metabolites in the leaves (green) and roots (red) of cucumber seedlings. Each detected metabolite framed with continuous lines was significantly down-accumulated in Cd-treatment and up-accumulated or unchanged in Cd + Se treatment, and those framed with dotted lines were significantly up-accumulated in Cd-treated cucumber seedlings. Metabolites in bold were checked in both leaves and roots. The relative fold changes in abundance are shown in Tables 1–4.



was up-accumulated by Cd + Se treatment in roots, 4.09 fold higher than with Cd treatment alone (Table 2). It is enticing to suggest that this high lactic acid expression in cucumber leaves and roots is a specific response to Cd + Se treatment; its higher accumulation in cucumber may facilitate greater Cd tolerance.

Sugars and polyols, organic acids and amino acids are intermediary metabolites that play roles of signals, regulators and antioxidants, amongst other functions.^{32–34} It was reported that under Cd stress, these intermediary metabolites exert some important functions in plants; for example, the specific accumulation of sugars, amino acids and organic acids can be used to identify important pathways of Cd detoxification in forage grasses.^{35,36} In the present study, a large number of sugars and polyols were up-accumulated or showed no obvious change after addition of Se (Cd + Se) compared with Cd treatment alone and were down-accumulated under Cd treatment *vs.* the control. In leaves, the sugar and polyol metabolite with the most significant change in concentration by Cd + Se was melibiose 2, which increased 4.56 fold compared to Cd treatment alone, followed by glucoheptonic acid 3, phytol, D-glycerol 1-phosphate, and 3-methylamino-1,2-propanediol 2. Meanwhile, in the roots, ribulose-5-phosphate 1, lactulose 1, lactitol, *etc.* were upregulated (Tables 1 and 2). In this sense, the high expression of these sugar-related metabolites may provide energy for developing Se-induced Cd tolerance in cucumber.

Amino acids and lipids are also essential metabolites that are responsible for Se-induced Cd tolerance in the leaves and roots of cucumber seedlings. The addition of Se significantly affected the expression of amino acids derived from pyruvic acid, *e.g.* the expressive abundance of alanine exhibited an obvious increase, as did glycine and aminomalonic acid, which were characterized by significantly high accumulation in Cd + Se leaves compared to Cd treatment alone (4.47 and 5.91 fold, respectively); moreover, in roots, oxamic acid, L-homoserine 1, glycine 2 and serine 1 were up-accumulated by Cd + Se treatment and down-accumulated under Cd treatment alone (Tables 1 and 2). Hediji reported that the level of alanine was reduced by 25% in young Cd-treated tomato leaves compared to a control;³⁷ these results are similar to those of the present study (Tables 3 and 4). Meanwhile, Wu *et al.* reported that plants can adjust osmotic stress *via* accumulating high concentrations of compatible solutes, including glycine, proline and betaine.¹⁹ Although glycine is known as a metabolite with compatible solute properties, more importantly, it is also a component of glutathione biosynthesis, which is part of the antioxidant system.^{20,38} In the present study, the high abundance of alanine and glycine under Cd + Se treatment compared with Cd treatment alone may be important for Se-enhanced cucumber resistance to Cd toxicity. These results indicate that exogenous Se can induce high expression of amino acid and lipid-related metabolites, facilitating cucumber tolerance to Cd toxicity.

Comparative metabonomics reveals key metabolites associated with Cd tolerance

The metabolite changes in response to Cd treatment differed between tissues within the same species, which is similar to salt

stress.³⁹ Fig. 3 summarizes the effects of Cd and/or Se on the primary metabolism in the leaves and roots of cucumber. An abundance of sugars (fructose, sucrose, myo-inositol and mannitol), several TCA cycle intermediates and pyruvic acid were highly accumulated after Cd treatment in both leaves and roots. Simultaneously, the expression levels of some amino acids and organic acids showed significant increases after Cd treatment compared with the control (Fig. S4c, d, † Tables 3 and 4). Furthermore, the expressive abundance of some metabolites differed between different cucumber tissues after Cd and/or Se stress.

Synthesis of amino acids, sugars and polyols, and organic acids is known to be beneficial to membrane stability and osmotic adjustment.^{22,24,40} In this study, the amino acid category was the largest section, followed by sugars and polyols and organic acids. The present results show that threose and sorbitol, which are acknowledged to be compatible osmotic adjustment substances, greatly accumulated after Cd treatment in roots and leaves compared with the control; meanwhile, sucrose, myo-inositol, thiogalactopyranoside, xylose, fucose, galactinol and maltotriose were root-specific compatible solutes, and mannitol, threitol, arabitol and sedoheptulose were leaf-specific solutes (Tables 3 and 4). It was reported that Cd-induced plant growth inhibition is correlated with high accumulation of soluble sugars in tomato and pea^{37,41} as well as in cucumber,¹⁷ and it was suggested that this carbohydrate accumulation is a result of the interference of metals in carbohydrate metabolism. Moreover, galactinol could scavenge $\cdot\text{OH}$ as efficiently as GSH.^{33,42} Therefore, the high expression of this sugar in Cd-treated cucumber roots may abate oxidative stress caused by Cd stress. Also, sucrose can be exported to sink organs,² coinciding with increasing levels of sucrose concomitant to fructose and other sugars after Cd exposure in roots, which may be involved in regulating cucumber Cd toxicity; Cd may have been exported into the vacuoles of roots with the sugars. Fucose is a trehalose dihydrate; trehalose has high chemical stability and a hydrophilic structure,⁴³ and it highly accumulates in response to chilling and freezing.^{44,45} Xylose has been reported to highly accumulate under cold stress in *Arabidopsis*;²⁰ it is also a precursor for threitol biosynthesis.⁴⁶ In the present study, the levels of fucose, xylose, threitol, *etc.* were up-accumulated after Cd treatment in cucumber seedlings; these metabolites may be contributors to cucumber Cd tolerance.

Some amino acids play important roles in metal tolerance and chelation in plants, and their synthesis pathways are involved in the detoxification of Cd.^{32,47} For instance, asparagine and lysine are synthesized from aspartate, which is produced by oxaloacetate. Meanwhile, asparagine has also been reported to accumulate metals under toxic metal stress; it can participate in the detoxification of Cd directly or through the biosynthesis of chelating peptides.^{48,49} The present study indicates that the expressive abundance of aspartic acid and asparagine was high after Cd treatment both in the leaves and roots of cucumber; this indicates that these highly expressed amino acids are substances that accumulate or chelate toxic Cd and enhance the Cd tolerance of cucumber. Moreover, the expressive abundance of valine both in leaves and roots and of isoleucine in leaves



significantly increased after Cd treatment, as did that of phenylalanine; these results are similar to previous reports in tomato leaves.³⁷ In addition, our data show that aspartic acid, valine, glutamic acid and allothreonine are the common compatible substances with high expression after Cd treatment both in cucumber leaves and roots, while proline, cysteine, asparagine, serine, phenylalanine, carbobenzyloxy-L-leucine, isoleucine, lysine, spermidine and creatine were leaf-specific. High accumulation of cysteine in Cd-treated leaves is essential for Cd tolerance; it is required for GSH, PCs and methionine synthesis.⁵⁰ Similarly, it has been reported that proline highly accumulates in Cd-treated tomato leaves⁵¹ and that the increased expressive abundance of proline is related to the enhancement of stress tolerance,¹⁹ which is crucial for plants to respond to Cd stress.³² Proline is also a direct product of glutamate metabolism (Fig. 3), indicating that Cd stress facilitates proline biosynthesis; this may be due to the positive effects of Cd treatment on the expression of glutamic acid (Tables 3 and 4) and to the preferential use of glutamate in the metabolic route leading to the synthesis of chelators such as phytochelatins or glutathione.⁵² Consistent with these hypotheses, the present research indicates that glutamic acid increases in both leaves and roots and proline and cysteine increase in leaves simultaneously under Cd stress, suggesting that these amino acids play important roles in Cd tolerance or chelation in cucumber seedlings. These amino acids are also supposed to be compatible solutes which are involved in osmotic regulation, protecting proteins and cell membranes from ROS.^{53,54} Additionally, the high accumulation of leucine and isoleucine under Cd stress manifests that these branched-chain amino acids play an important role in Cd stress; for instance, they can maintain amino acid homeostasis or promote stress-induced protein synthesis.^{55,56} Spermidine is another important amino acid for plants grown under stress; it can act as a regulator, signal or antioxidant.⁵⁷ Simultaneously, spermidine appears to be associated with processes that facilitate Cd accumulation by plants used for Cd phytoextraction.⁵⁸ The abundance of accumulated spermidine in Cd-treated leaves was high, indicating its importance to Cd tolerance and accumulation in cucumber. The present study also showed that β -alanine, *N*-acetyl-L-leucine, oxoproline, *N*-acetyl-L-phenylalanine and some organic acids (glycolic acid, sulfuric acid, malonic acid, threonic acid, and gluconic acid) were highly accumulated in Cd-treated cucumber roots and were root-specific solutes; these amino acids may be involved in mitigation of Cd contamination, as observed in *Arabidopsis*.⁵⁹

On the other side, the TCA cycle and glycolysis intermediates were highly accumulated after 7 days of Cd exposure in the leaves and roots of cucumber seedlings. Our data showed that D-galacturonic acid 2 and galactonic acid were highly expressed in leaves after Cd stress (Table 3). As is known, galacturonic acid is the component unit of pectic acid and the major component of pectin in the primary cell wall; it is involved in the metabolism of polysaccharides in the cell wall and affects the structure and function of plant cell walls, with functions in plant growth and development. Meanwhile, Sun *et al.* reported that the majority of Cd accumulated in the inner epidermis and endodermis of

cell walls in barley plants.¹⁵ The present results indicate that galacturonic acid and galactonic acid are responsible for developing resistance to Cd stress in cucumber seedlings. The expressive abundance of fructose, galactose, glyceric acid, glucose-1-phosphate, pyruvic acid and shikimic acid in Cd-treated cucumber roots was significantly increased compared with that in the control; these metabolites are the primary intermediates of glycolysis. Meanwhile, succinic acid, fumaric acid and α -ketoglutaric acid in roots and oxalacetic acid in leaves were also expressed more after Cd treatment (Tables 3 and 4); they are the primary intermediates of the TCA cycle and may provide energy for the synthesis of amino acids and proteins.

Conclusions

In conclusion, exogenous Se significantly improved ultrastructural damage induced by Cd in the leaves and roots of cucumber seedlings. For example, chloroplasts under Cd + Se treatment showed more normal morphologies than those treated with Cd alone. The morphology of the root nucleus was better; the chromatin distribution was more uniform, and the cytoplasm was denser. Meanwhile, the size of the cytoplasmic vacuoles and the numbers of starch grains and plasmids almost returned to normal levels. On the other side, cucumber may have different Se-mediated Cd stress tolerance mechanisms, which is highly significant for improving the Cd resistance ability of cucumber and other vegetable crops. In the present study, metabolite profiling revealed that several intermediate products of glycolysis and the TCA cycle and some amino acids were prominently highly accumulated under Cd + Se treatment compared with Cd treatment alone and down-accumulated in Cd-treated cucumber seedlings compared with controls, such as pyruvic acid, galactose, lactose, glutaric acid and alanine in leaves, glucose-6-phosphate and serine in roots, and lactic acid and glycine in both leaves and roots; these may play dominant roles in the development of Se-mediated Cd tolerance. Moreover, high levels of sugars and polyols, amino acids and organic acids were up-accumulated in Cd-treated plants. Meanwhile, our data suggest that the high accumulation of fructose, shikimic acid, succinic acid, α -ketoglutaric acid and fumaric acid in roots is a Cd-specific response, indicating that these metabolites are important to the development of Cd resistance by cucumber. This study may provide a significant metabolic basis for Se-improved cucumber resistance to Cd stress, and the identified metabolites may present a new approach to finding new strategies for Cd detoxification of cucumber.

Abbreviations

BNS	Basal nutrient solution
BSTFA	Bis(trimethylsilyl)trifluoroacetamide
Cd	Cadmium
F6P	Fructose 6-phosphate
FC	Fold change
G6P	Glucose-6-phosphate



GA3P	Glyceraldehyde 3-phosphate
GC-TOF-MS	Gas chromatography coupled with time-of-flight mass spectrometry
GC-MS	Gas chromatography-mass spectrometry
H ₂ O ₂	Hydrogen peroxide
HCA	Hierarchical clustering analysis
ICP-AES	Inductively coupled plasma atomic emission spectroscopy
KEGG	Kyoto encyclopedia of genes and genomes
Na ₂ -EDTA	Disodium ethylenediamine tetraacetic acid
OPLS-DA	Orthogonal projections to latent structures discriminant analysis
PCA	Principal component analysis
PEP	Phosphoenolpyruvic acid
ROS	Reactive oxygen species
Se	Selenium
SEM	Scanning electron microscopy
TCA	Tricarboxylic acid
TIC	Total ion chromatogram
TMCS	Chlorotrimethylsilane
VIP	Variable importance for the projection

Conflicts of interest

There are no conflicts to declare.

Acknowledgements

This work was supported by the Key Research and Development Project of Shanxi Province (201903D221066), National Natural Science Foundation of China (31401319), Research Project Supported by Shanxi Scholarship Council of China (2017-083), Laboratory Construction Project of the Shanxi Science and Technology Department of China (2017, 2018, 2019), Program for the Top Young Academic Leaders of Higher Learning Institutions of Shanxi of China (20151006), Shanxi Province Science Foundation for Youths (2015021146), and the Scientific Research Foundation for Doctoral Scholars of Taiyuan University of Science and Technology of China (20182023).

Notes and references

- J. Gzyl and E. A. Gwózdź, *Plant Cell, Tissue Organ Cult.*, 2005, **80**, 59–67.
- E. Keunen, I. Florez-Sarasa, T. Obata, M. Jozefczak, T. Remans, J. Vangronsveld, A. R. Fernie and A. Cuypers, *Environ. Exp. Bot.*, 2016, **124**, 64–78.
- G. DalCorso, S. Farinati, S. Maistri and A. Furini, *J. Integr. Plant Biol.*, 2008, **50**, 1268–1280.
- C. S. Seth, T. Remans, E. Keunen, M. Jozefczak, H. Gielen, K. Opendakker, N. Weyens, J. Vangronsveld and A. Cuypers, *Plant, Cell Environ.*, 2012, **35**, 334–346.
- J. R. Shaw, T. D. Dempsey, C. Y. Chen, J. W. Hamilton and C. L. Folt, *Environ. Toxicol. Chem.*, 2006, **25**, 182–189.
- N. Spann, D. C. Aldridge, J. L. Griffin and O. A. H. Jones, *Aquat. Toxicol.*, 2011, **105**, 589–599.
- N. Muhammad, S. G. Cai, J. M. Shah and G. P. Zhang, *Acta Physiol. Plant.*, 2016, **38**(12), 277.
- M. Haghghi and J. A. Teixeira da Silva, *Commun. Soil Sci. Plant Anal.*, 2016, **47**(2), 142–155.
- L. Lin, W. H. Zhou, H. X. Dai, F. B. Cao, G. P. Zhang and F. B. Wu, *J. Hazard. Mater.*, 2012, **235**, 343–351.
- B. Hawrylak-Nowak, S. Dresler and M. Wójcik, *Sci. Hortic.*, 2014, **172**, 10–18.
- W. X. Liu, S. H. Shang, X. Feng, G. P. Zhang and F. B. Wu, *Environ. Toxicol. Chem.*, 2015, **34**, 92–99.
- B. Hawrylak-Nowak, *Biol. Trace Elem. Res.*, 2009, **132**(1–3), 259–269.
- M. M. Rahman, K. F. B. Hossain, S. Banik, M. T. Sikder, M. Akter, S. E. C. Bondad, M. S. Rahaman, T. Hosokawa, T. Saito and M. Kurasaki, *Ecotoxicol. Environ. Saf.*, 2019, **168**, 146–163.
- H. Y. Sun, F. B. Cao, N. B. Wang, M. Zhang, A. I. Mosaddek, G. P. Zhang and F. B. Wu, *PLoS One*, 2013, **8**(11), e79158.
- H. Y. Sun, Z. H. Chen, F. Chen, L. P. Xie, G. P. Zhang, E. Vincze and F. B. Wu, *BMC Plant Biol.*, 2015, **15**, 259.
- H. Y. Sun, H. X. Dai, X. Y. Wang and G. H. Wang, *Ecotoxicol. Environ. Saf.*, 2016, **133**, 114–126.
- H. Y. Sun, X. Y. Wang, Y. N. Wang, Y. Y. Wei and G. H. Wang, *Span. J. Agric. Res.*, 2016, **14**(4), e1105.
- U. Roessner, J. H. Patterson, M. G. Forbes, G. B. Fincher, P. Langridge and A. Bacic, *Plant Physiol.*, 2006, **142**, 1087–1101.
- D. Z. Wu, S. G. Cai, M. X. Chen, L. Z. Ye, Z. H. Chen, H. T. Zhang, F. Dai, F. B. Wu and G. P. Zhang, *PLoS One*, 2013, **8**(1), e55431.
- F. Kaplan, J. Kopka, W. H. Dale, W. Zhao, K. C. Schiller, N. Gatzke, D. Y. Sung and C. L. Guy, *Plant Physiol.*, 2004, **136**, 4159–4168.
- L. Rizhsky, H. J. Liang, J. Shuman, V. Shulaev, S. Davletova and R. Mittler, *Plant Physiol.*, 2004, **134**, 1683–1696.
- H. K. Kim and R. Verpoorte, *Phytochem. Anal.*, 2010, **21**, 4–13.
- H. Y. Sun, X. H. Zhang, X. Y. He, I. M. Ahmed, F. B. Cao, G. P. Zhang and F. B. Wu, *Plant Growth Regul.*, 2014, **74**(1), 93–105.
- Y. Y. He, C. X. Mao, Z. Y. Chen, H. Wen, W. Lu and H. D. Wu, *Anim. Nutr.*, 2016, **2**(4), 351–356.
- A. Luedemann, K. Strassburg, A. Erban and J. Kopka, *Bioinformatics*, 2008, **24**, 732–737.
- J. Xia, N. Psychogios, N. Young and D. S. Wishart, *Nucleic Acids Res.*, 2009, **37**, W652–W660.
- A. Aloui, G. Recorbet, A. Gollotte, F. Robert, B. Valot, V. Gianinazzi-Pearson, S. Aschi-Smiti and E. Dumas-Gaudot, *Proteomics*, 2009, **9**, 420–433.
- M. Rizwan, S. Ali, M. Adrees, H. Rizvi, M. Zia-ur-Rehman, F. Hannan, M. F. Qayyum, F. Hafeez and Y. S. Ok, *Environ. Sci. Pollut. Res.*, 2016, **23**, 17859–17879.
- S. Dresler, B. Hawrylak-Nowak, J. Kovacik, M. Pochwatka, A. Hanaka, M. Strzemski, I. Sowa and M. Wojciak-Kosior, *Ecotoxicol. Environ. Saf.*, 2019, **170**, 120–126.
- L. Shekari, H. Aroiee, A. Mirshekari and H. Nemati, *J. Plant Nutr.*, 2019, **42**(5), 529–542.



- 31 B. Wang, B. Bian, C. Wang, C. Li, H. Fang, J. Zhang, D. Huang, J. Huo and W. Liao, *PLoS One*, 2019, **14**(2), e0212639.
- 32 S. S. Sharma and K. J. Dietz, *J. Exp. Bot.*, 2006, **57**, 711–726.
- 33 X. Sun, J. Zhang, H. Zhang, Y. Ni, Q. Zhang, J. Chen and Y. Guan, *Chemosphere*, 2010, **78**, 840–845.
- 34 E. Keunen, D. Peshev, J. Vangronsveld, W. Van Den Ende and A. Cuyppers, *Plant, Cell Environ.*, 2013, **36**, 1242–1255.
- 35 Y. Xie, L. Hu, Z. Du, X. Sun, E. Amombo, J. Fan and J. Fu, *PLoS One*, 2014, **9**(12), e115279.
- 36 F. H. S. Rabêlo, R. A. Azevedo and F. A. Monteiro, *Water, Air, Soil Pollut.*, 2017, **228**, 394.
- 37 H. Hediji, W. Djebali, C. Cabasson, M. Maucourt, P. Baldet, A. Bertrand, L. B. Zoghalmi, C. Deborde, A. Moing, R. Brouquisse, W. Chaïbi and P. Gallusci, *Ecotoxicol. Environ. Saf.*, 2010, **73**(8), 1965–1974.
- 38 S. C. Lu, *Biochim. Biophys. Acta*, 2013, **1830**, 3143–3153.
- 39 Q. Gong, P. Li, S. Ma, S. Indu Rupassara and H. J. Bohnert, *Plant J.*, 2005, **44**, 826–839.
- 40 Widodo, J. H. Patterson, E. Newbiggin, M. Tester, A. Bacic and U. Roessner, *J. Exp. Bot.*, 2009, **60**, 4089–4103.
- 41 R. Devi, N. Munjral, A. K. Gupta and N. Kaur, *J. Exp. Bot.*, 2007, **61**, 167–174.
- 42 A. Nishizawa, Y. Yabuta and S. Shigeoka, *Plant Physiol.*, 2008, **147**, 1251–1263.
- 43 M. López-Gómez and C. Lluch, Trehalose and abiotic stress tolerance, in *Abiotic Stress Responses in Plants*, ed. P. Ahmad and M. N. V. Prasad, Springer, New York, 2012, pp. 253–265.
- 44 M. H. R. Pramanik and R. Imai, *Plant Mol. Biol.*, 2005, **58**, 751–762.
- 45 K. Min, L. Showman, A. Perera and R. Arora, *Environ. Exp. Bot.*, 2018, **156**, 214–227.
- 46 K. R. Walters, Q. Pan, A. S. Serianni and J. G. Duman, *J. Biol. Chem.*, 2009, **284**, 16822–16831.
- 47 J. L. Hall, *J. Exp. Bot.*, 2002, **53**, 1–11.
- 48 P. J. Lea, L. Sodek, M. A. J. Parry, P. R. Shewry and N. G. Halford, *Ann. Appl. Biol.*, 2007, **150**, 1–26.
- 49 G. Costa and E. Spitz, *Plant Sci.*, 1997, **128**, 131–140.
- 50 C. Cobbett and P. Goldsbrough, *Annu. Rev. Plant Biol.*, 2002, **53**, 159–182.
- 51 C. Chaffei, K. Pageau, A. Suzuki, H. Gouia, M. H. Ghorbel and C. Masclaux-Daubresse, *Plant Cell Physiol.*, 2004, **45**, 1681–1693.
- 52 D. Pavlikova, M. Pavlik, L. Staszikova, V. Motyka, J. Szakova, P. Tlustos and J. Balik, *Ecotoxicol. Environ. Saf.*, 2008, **70**, 223–230.
- 53 H. J. Bohnert, D. E. Nelson and R. G. Jensen, *Plant Cell*, 1995, **7**, 1099–1111.
- 54 X. Wang, Y. Ma, C. Huang, Q. Wan, N. Li and Y. Bi, *Planta*, 2008, **227**, 611–623.
- 55 V. Joshi, J. G. Joung, Z. Fei and G. Jander, *Amino Acids*, 2010, **39**, 933–947.
- 56 W. L. Araújo, K. Ishizaki, A. Nunes-Nesi, T. R. Larson, T. Tohge, I. Krahnert, S. Witt, T. Obata, N. Schauer, I. A. Graham, C. J. Leaver and A. R. Fernie, *Plant Cell*, 2010, **22**, 1549–1563.
- 57 Y. Kasukabe, L. He, K. Nada, S. Misawa, I. Ihara and S. Tachibana, *Plant Cell Physiol.*, 2004, **45**, 712–722.
- 58 G. X. Gong, Y. Liu, D. Huang, G. Zeng, S. Liu, H. Tang, L. Zhou, X. Hu, Y. Zhou and X. Tan, *Environ. Sci. Pollut. Res.*, 2016, **23**, 8699–8708.
- 59 A. D. Hanson, B. Rathinasabapathi, J. Rivoal, M. Burnet, M. O. Dillon and D. A. Gage, *Proc. Natl. Acad. Sci. U. S. A.*, 1994, **91**, 306–310.

