



Cite this: *Mol. BioSyst.*, 2016,
12, 1527

Effects of mono- and divalent metal ions on DNA binding and catalysis of human apurinic/apyrimidinic endonuclease 1

Anastasia D. Miroshnikova,^a Alexandra A. Kuznetsova,^a Yuri N. Vorobjev,^a
Nikita A. Kuznetsov^{*ab} and Olga S. Fedorova^{*ab}

Here, we used stopped-flow fluorescence techniques to conduct a comparative kinetic analysis of the conformational transitions in human apurinic/apyrimidinic endonuclease 1 (APE1) and in DNA containing an abasic site in the course of their interaction. Effects of monovalent (K^+) and divalent (Mg^{2+} , Mn^{2+} , Ca^{2+} , Zn^{2+} , Cu^{2+} , and Ni^{2+}) metal ions on DNA binding and catalytic stages were studied. It was shown that the first step of substrate binding (corresponding to formation of a primary enzyme–substrate complex) does not depend on the concentration (0.05–5.0 mM) or the nature of divalent metal ions. In contrast, the initial DNA binding efficiency significantly decreased at a high concentration (5–250 mM) of monovalent K^+ ions, indicating the involvement of electrostatic interactions in this stage. It was also shown that Cu^{2+} ions abrogated the DNA binding ability of APE1, possibly, due to a strong interaction with DNA bases and the sugar–phosphate backbone. In the case of Ca^{2+} ions, the catalytic activity of APE1 was lost completely with retention of binding potential. Thus, the enzymatic activity of APE1 is increased in the order $Zn^{2+} < Ni^{2+} < Mn^{2+} < Mg^{2+}$. Circular dichroism spectra and calculation of the contact area between APE1 and DNA reveal that Mg^{2+} ions stabilize the protein structure and the enzyme–substrate complex.

Received 18th February 2016,
Accepted 4th April 2016

DOI: 10.1039/c6mb00128a

www.rsc.org/molecularbiosystems

Introduction

A common type of DNA damage is an apurinic/apyrimidinic site (AP-site).¹ AP-sites are generated due to the repair activity of DNA glycosylases (which excise damaged bases from DNA) or *via* spontaneous hydrolysis of the *N*-glycosidic bonds.^{2,3} It was estimated that > 10 000 AP-sites are produced in each mammalian cell per day.³ If left unrepaired, AP-sites are both cytotoxic and mutagenic. Therefore, the repair of these lesions is essential for maintenance of genomic integrity.^{4,5}

Human apurinic/apyrimidinic endonuclease 1 (APE1) is a key enzyme of base excision repair (BER) responsible for initiation of a search for and repair of AP-sites and other DNA lesions.^{6,7} APE1 is a multifunctional enzyme catalyzing the incision of the DNA phosphodiester bond on the 5' side of AP-sites, generating a nick with 3'-hydroxyl and 5'-deoxyribose phosphate (dRP) termini.^{8,9} In addition to its endonuclease activity, APE1 is known to have 3'-phosphodiesterase and 3'-phosphatase activities and a 3' to 5'

exonuclease activity.¹⁰ It is known that the level of enzymatic activity of AP-endonuclease APE1 has a considerable influence on the process of the removal of DNA lesions.^{11–13}

Three-dimensional structures of free APE1^{14–16} and its covalent complexes with DNA^{17–19} have been determined by X-ray crystallography. The crystal structures show that APE1 binds to both major and minor grooves of DNA and flips out the abasic deoxyribose phosphate. The residues Arg-73, Ala-74 and Lys-78 contact three consecutive DNA phosphates of the opposing strand on the 5' side of the AP-site. The Met-270 residue is incorporated into the minor groove of DNA, thus displacing the base opposite to the AP-site. The residues Tyr-128 and Gly-127 span and widen the minor groove of DNA by ~2 Å. The residue Arg-177 gets inserted through the DNA major groove and forms a hydrogen bond with a phosphate group of the AP-site 3'-phosphate. These contacts stabilize the extra-helical conformation of the AP-site in the active site of the enzyme. In the catalytically competent enzyme–substrate complex, which contains [3-hydroxytetrahydrofuran-2-yl]methyl phosphate (F-site, a stable analog of a natural AP-site, lacking the hydroxyl group at the C1' atom of ribose), the everted F-site is placed into the active site, which is formed by amino acid residues (Asp-308, His-309, Glu-96, Asp-210, Tyr-171, Asn-212, and Asn-174) that participate in the coordination of water molecules and Mg^{2+} ions (Fig. 1). The phosphate residue located on the 5' side of the AP-site is directly coordinated by amino acid residues Asn-174,

^a Institute of Chemical Biology and Fundamental Medicine (ICBFM), Siberian Branch of Russian Academy of Sciences, 8 Lavrentyev Ave., Novosibirsk 630090, Russia. E-mail: nikita.kuznetsov@niboch.nsc.ru, fedorova@niboch.nsc.ru; Fax: +7 383-3635153; Tel: +7 383-3635174, +7 383-3635175

^b Department of Natural Sciences, Novosibirsk State University, 2 Pirogova St., Novosibirsk 630090, Russia

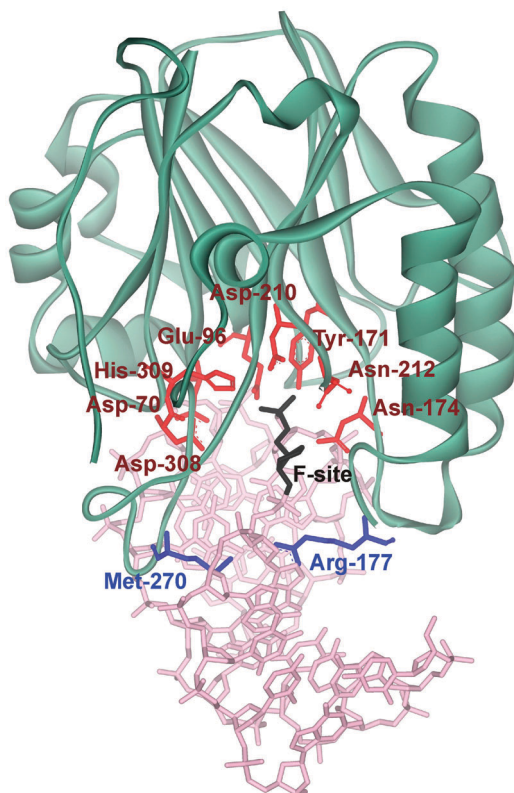


Fig. 1 The structure of APE1 complexed with F-site-containing DNA (PDB ID 1DE8).¹⁷ Met-270 and Arg-177 (inserted into the duplex) are shown in blue. The important amino acids of the active site, which participate in the coordination of water molecules and Mg^{2+} ions, are highlighted in red.

Asn-212, and His-309. The catalytic reaction begins with an attack of the water molecule, presumably coordinated by Asp-210.^{17,19} Alternative mechanisms^{20,21} suggest that Tyr-171 in the phenolate form attacks the scissible phosphate or His-309 acts as the general base, generating the attacking nucleophile.

The Mg^{2+} coordination geometry and the functions of metal ions in substrate binding, cleavage, and product release are actively discussed.^{14–16,22–26} The first reported APE1 crystal structure contains one Sm^{3+} ion in the active site.¹⁴ The metal-binding site identified in this APE1 structure (PDB ID: 1BIX) is often referred to as the “A-site”. Two structures of DNA-free APE1 (PDB IDs: 1HD7 and 1E9N) were reported with Pb^{2+} ions in the active site.¹⁵ Both of these structures have a Pb^{2+} ion at the A-site, and one of the structures has the second Pb^{2+} ion, at the “B-site,” coordinated by residues Asp-210, Asn-212, and His-309. A “moving-metal mechanism” was proposed where one Mg^{2+} ion moves from the “B-site” to the “A-site” during substrate cleavage.²³ In later studies, the structure of human APE1 was solved at 1.92 Å resolution with a single Mg^{2+} ion in the active site.¹⁶ The structure reveals ideal octahedral coordination of Mg^{2+} via two carboxylate groups (Asp-70 and Glu-96) and four water molecules. The binding site for Mg^{2+} in the new structure is the same as that observed for the surrogate metals Sm^{3+} and Pb^{2+} in previously published structures of DNA-free APE1.^{14,15} The latest structural studies on human APE1 showed that repositioning of Mg^{2+} is facilitated by the structural plasticity of Glu-96 in the active site of

the enzyme.²⁶ Structures of an enzyme–product (EP) complex and enzyme–substrate (ES) complex with a single Mg^{2+} ion in the active site were determined recently.^{19,27} In the EP complex, Mg^{2+} is coordinated directly by Glu-96, the 3'-OH, a non-bridging O atom of the nascent 5'-phosphate, and by three water molecules, one of which is bound to Asp-70.

Two catalytic mechanisms of APE1 action, which involve one or two Mg^{2+} cations, were proposed.^{15,17} According to the mechanism employing a single metal ion in the active site, the reaction starts with the nucleophilic attack of a water molecule coordinated by Asp-210.¹⁷ In the alternative mechanism operating with two metal ions in the active site, the Mg^{2+} ion at the “A-site” coordinates a hydroxyl ion, which carries out a nucleophilic attack on the phosphorous 5' to the abasic nucleotide. The Mg^{2+} at the “B-site” neutralizes the charge of the pentacoordinate intermediate and/or stabilizes the 3' leaving group.¹⁵ The recently published structure of a metal-bound substrate complex supports the mechanism of catalysis involving only a single metal near the “A-site.”²⁷

Despite the successful characterization of crystal structures of human APE1 bound with various metal ions as well as substrate/product the location, the stoichiometry and the catalytic function of the divalent cation are still being debated.

Previously, the kinetic mechanism of conformational changes in APE1 and in abasic DNA molecules in the course of their interaction were studied by recording the intrinsic tryptophan fluorescence of the enzyme^{28,29} and the 2-aminopurine fluorescence in the DNA.³⁰ It should be noted that APE1 has a rigid protein core, and DNA binding leads to negligible structural rearrangements (Fig. 2). Nevertheless, changes in Trp fluorescence

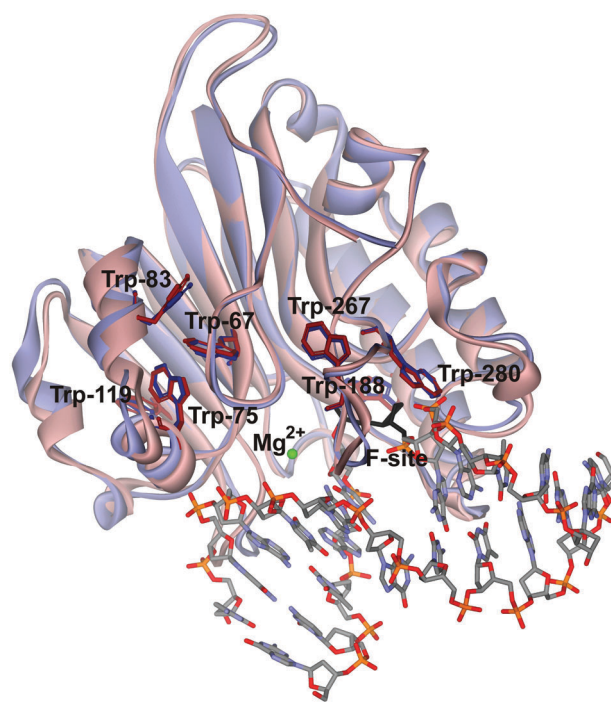
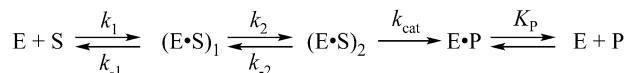


Fig. 2 An overlay of the structures of free APE1 (reddish, PDB ID 4LND) and APE1 complexed with DNA containing an F-site (violet, PDB ID 1DE8). Trp residues of APE1 are shown.





Scheme 1 where E is APE1; S is the substrate containing an AP- or F-site; P is the product of the substrate incision reaction; $(E \cdot S)_1$ is the initial precatalytic enzyme–substrate complex; $(E \cdot S)_2$ is the catalytically active enzyme–substrate complex; E·P is a complex of the enzyme with the product; k_1 , k_{-1} , k_2 , k_{-2} are the rate constants of equilibrium steps; k_{cat} is the rate constant of catalytic cleavage of the 5' phosphodiester bond.

intensity allowed us to identify the steps of DNA binding, cleavage, and product release. A comparison of the crystal structures of free APE1 (PDB ID 4LND) and APE1 bound to DNA containing an F-site (PDB ID 1DE8) reveals that one of seven Trp residues of APE1 (Trp-280) is located in the DNA-binding pocket of the enzyme and forms a hydrogen bond with the 3' phosphate group of the AP-site. Therefore, the observed changes in fluorescence most likely reflect the conformational changes near the Trp-280 residue. We found that during recognition of an abasic site at least two pre-excision conformational transitions take place in the enzyme (Scheme 1). The binding steps led to formation of a catalytically active enzyme–substrate complex. In this complex, APE1 excises the phosphodiester bond on the 5' side of the abasic site. The last step of the kinetic mechanism is the product release.

In the present work, we used stopped-flow fluorescence techniques to conduct a comparative kinetic analysis of the conformational changes of the enzyme and DNA substrate molecules during recognition and cleavage of the abasic site either in the absence of any metals in the active site or in the presence of K^+ , Mg^{2+} , Mn^{2+} , Ca^{2+} , Zn^{2+} , Cu^{2+} , or Ni^{2+} .

Materials and methods

Protein expression and purification

To purify APE1 expressed as a recombinant protein, 1 L of culture (in LB broth) of *Escherichia coli* strain Rosetta II(DE3) (Invitrogen, France) carrying the pET11a-APE1 construct was grown with $50 \mu\text{g mL}^{-1}$ ampicillin at 37°C until absorbance at 600 nm (A_{600}) reached 0.6–0.7; APE1 expression was induced overnight with 0.2 mM isopropyl- β -D-thiogalactopyranoside. The method for isolation of wild-type APE1 was described previously.^{29,31} The protein concentration was measured by the Bradford method;³² the stock solution was stored at -20°C .

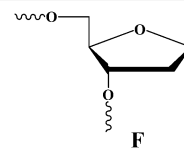
Oligodeoxynucleotides (ODNs)

The sequence of the DNA (substrate) used in this work is presented in Table 1. The oligonucleotides (13 and 17 bp) were synthesized by standard phosphoramidite methods on an ASM-700 synthesizer (BIOSSET Ltd, Novosibirsk, Russia) in the Laboratory of Bionanotechnology of ICBFM using phosphoramidites purchased from Glen Research (Sterling, VA). The synthetic oligonucleotides were uncoupled from the solid support with ammonium hydroxide according to the manufacturer's protocol. The deprotected oligonucleotides were purified by high-performance liquid chromatography. The purity of ODNs exceeded 98% as estimated by electrophoresis in a 20% denaturing

Table 1 Sequences of oligodeoxynucleotides and structure of the modified residue

Shorthand	Sequence
F ¹³ -substrate	5'-TCTCTCFCTTCC-3' 3'-AGAGAGGGGAAGG-5'
F ¹⁷ -substrate	5'-TCTCTCFCTTCC-3' 3'-AGAGAGGGGAAGGAA-5'
FAM-F-substrate ^a	5'-FAM-GCTCAFGTACAGAGCTG-3' 3'-CGAGTGCATGTCTCGAC-BHQ1-5'

^a FAM is 6-carboxyfluorescein, BHQ1 is black hole quencher.



polyacrylamide gel after staining with the Stains-All dye (Sigma-Aldrich). Concentrations of the oligonucleotides were determined by means of A_{260} . The ODN duplexes were prepared by annealing of modified and complementary strands in the 1 : 1 molar ratio in the reaction buffer (50 mM Tris-HCl, pH 6.8, 50 mM KCl, 1 mM EDTA, 1 mM DTT, 5 mM $MgCl_2$, and 7% glycerol).

Stopped-flow fluorescence measurements

Stopped-flow measurements with fluorescence detection were carried out mostly as described previously.^{33–35} In brief, we used a SX.18MV stopped-flow spectrometer (Applied Photophysics Ltd, UK) equipped with a 150 W Xe arc lamp and an optical cell with 2 mm path length. The dead time of the instrument is 1.4 ms. The fluorescence of Trp was excited at $\lambda_{\text{ex}} = 290$ nm and monitored at $\lambda_{\text{em}} > 320$ nm as transmitted by the filter WG-320 (Schott, Mainz, Germany). If 6-carboxyfluorescein (FAM) residue was present in the ODN duplex (FAM-F-substrate), the wavelength $\lambda_{\text{ex}} = 494$ nm was used to excite these residues, and their emission was analyzed at $\lambda_{\text{em}} > 515$ nm (Schott filter OG-515). All experiments were conducted at 25°C in the buffer consisting of 50 mM Tris-HCl, pH 6.8, 50 mM KCl, 1.0 mM EDTA, 1.0 mM DDT, 5.0 mM MeCl₂ (where Me is Mg, Mn, Ni, Zn, Ca, or Cu), and 7% glycerol (v/v).

APE1 was placed in one instrument's syringe and rapidly mixed in the reaction chamber with the substrate from another syringe. The concentration of APE1 in all the experiments was 1.0 μM , while concentrations of F-substrates were varied from 0.25 to 2.5 μM . The reported concentrations of reactants are those in the reaction chamber after mixing. Typically, each trace shown in the figures is the average of four or more fluorescence traces recorded in individual experiments. In the figures, if necessary for better presentation, the curves were manually moved apart. This procedure does not affect the results of fitting because the background fluorescence is fitted separately for each curve.

Conformational changes in the protein were monitored by changes in Trp fluorescence intensity. The FAM-F-substrate modified at 5' termini with the dye-quencher pair FAM/BHQ1 (Table 1) was used for Förster resonance energy transfer (FRET) measurements. FRET analysis revealed changes in the distance between the dye and quencher in the processes of DNA helix distortion during formation of the APE1–DNA specific complex and F-site cleavage reaction.

PAGE time-course experiments

Single-turnover APE1 endonuclease assays were performed in the standard reaction buffer. The reaction solution contained



1.0 μM APE1 and 1.0 μM F-substrate. The solutions of APE1 and F-substrates were initially incubated with 1.0 mM EDTA (5 minutes) to chelate any divalent metal ions and to obtain catalytically inactive apo-APE1. After that, each solution was incubated (10 min) with 5.0 mM MeCl_2 (where Me is Mg, Mn, Ni, Zn, Ca, or Cu). Cleavage of the F-substrate was initiated by addition of APE1. Aliquots (2 μL) of the reaction mixture were taken at certain time intervals, immediately quenched with 3 μL of a gel-loading dye containing 7 M urea and 50 mM EDTA, and loaded on a 20% (w/v) polyacrylamide/7 M urea gel. Disappearance of the substrate and formation of the product were analyzed by autoradiography and quantified by scanning densitometry in the Gel-Pro Analyzer software, v. 4.0 (Media Cybernetics, USA).

The kinetic traces of product accumulation were fitted to the single exponential curve using the Origin software (Originlab Corp., USA; eqn (1)).

$$[\text{product}] = A \times [1 - \exp(-k_{\text{obs}}^{\text{PAGE}} t)] \quad (1)$$

where A is the amplitude, $k_{\text{obs}}^{\text{PAGE}}$ is the rate constant, and t is the reaction time (s).

Influence of different concentrations of Mg^{2+} on stopped-flow kinetics

Trp fluorescence stopped-flow kinetic traces at different concentrations of Mg^{2+} were fitted to eqn (2) or (3) by a nonlinear regression procedure in the Origin software (OriginLab Corp., USA):

$$F = F_0 + F_1 \times \exp(-k_1^{\text{Trp,FAM}} t) + F_2 \times [1 - \exp(-k_{\text{cat}}^{\text{Trp,FAM}} t)] \quad (2)$$

$$F = F_0 + F_1 \times \exp(-k_1^{\text{Trp}} t) + F_2 \times \exp(-k_2^{\text{Trp}} t) + F_3 \times [1 - \exp(-k_{\text{cat}}^{\text{Trp}} t)] \quad (3)$$

where F is the observed fluorescence intensity of Trp or FAM, F_0 is the background fluorescence, F_i is fluorescence parameters, $k_i^{\text{Trp,FAM}}$ is the observed rate constant, and t is the reaction time.

The observed rate constants (k_i^{Trp}) for each particular concentration of a metal ion were determined by fitting of the individual time courses.

The dependence of observed rate constants k_2^{Trp} on concentration of Mg^{2+} was fitted to eqn (4):

$$k_2^{\text{Trp}} = k_{20} + (k_{2\text{max}} \times [\text{Mg}^{2+}]) / (K_{\text{D}}^{\text{Mg}^{2+}} + [\text{Mg}^{2+}]) \quad (4)$$

where, k_{20} is the rate constant of the second step in the absence of Mg^{2+} , $k_{2\text{max}}$ is the rate constant of the second step at saturating Mg^{2+} concentration, $K_{\text{D}}^{\text{Mg}^{2+}}$ is the apparent dissociation constant of APE1 with the Mg^{2+} ion.

Coefficient B of APE1 activation by Mg^{2+} was obtained by plotting the rate constants ($k_{\text{cat}}^{\text{Trp}}$ and $k_{\text{obs}}^{\text{PAGE}}$) against the concentration of Mg^{2+} and fitting the data to eqn (5):

$$k_{\text{cat}}^{\text{Trp}} = k_{\text{obs}}^{\text{PAGE}} = B \times [\text{Mg}^{2+}] \quad (5)$$

where B is the coefficient, proportional to the fraction of Mg^{2+} -activated APE1.

Global fitting of stopped-flow data

The sets of kinetic curves obtained at different concentrations of the reactants in the absence or presence of 5 mM Mg^{2+} , Ca^{2+} , Ni^{2+} , Mn^{2+} , or Zn^{2+} were analyzed in the DynaFit software (BioKin, Pullman, WA)³⁶ as described previously.^{37–42}

This approach is based on fluorescence intensity variation in the course of the reaction due to the sequential formation and further transformation of the DNA-enzyme complex and its conformers. The concentrations of each species in the mechanisms are described by a set of differential equations according to Schemes 1–3 (see Results). The stopped-flow fluorescence traces were directly fitted to the fluorescence intensity at any reaction time point as the sum of the background fluorescence and fluorescence intensity values of each intermediate complex formed by the enzyme with DNA:

$$F = F_0 + \sum_{i=0}^n f_i \times [\text{ES}]_i \quad (6)$$

where F_0 is the equipment-related photomultiplier parameter ("noise"), f_i is the molar response coefficient of the i th intermediate ES_i ($i = 0$ corresponds to the free protein and $i > 0$ to the enzyme-DNA complexes).

The software performs numerical integration of a system of ordinary differential equations with subsequent nonlinear least-squares regression analysis. In the evaluated mechanisms, except for the first bimolecular step, all other reactions are first-order. In the fits, we optimized all relevant rate constants for the forward and reverse reactions as well as the specific molar response factors for all intermediate complexes. During the data processing, the kinetic information was obtained from temporal behavior of the fluorescence intensity, not from the amplitudes of the specific signal contributions. The response factors for different conformers resulting from the fits were not used for determination of the equilibrium constants but rather provided additional information on the fluorescence intensity variations in different complexes and conformers.

Circular dichroism (CD) spectra

These spectra were recorded on a Jasco J-600 spectropolarimeter (Jasco, Japan), at 5 $^{\circ}\text{C}$ in quartz cells with 1 cm path length. The concentration of APE1 or the F^{13} -substrate in the cell was 1.0 μM . The experiments were carried out in the buffer consisting of 50 mM Tris-HCl pH 6.8, 50 mM KCl, 1.0 mM EDTA, 1.0 mM DDT, and 7% glycerol (v/v). Concentration of MeCl_2 , where Me is Mg, Mn, Ni, Zn, Ca, or Cu, was 5.0 mM. The spectra were recorded at the bandwidth 1.0 nm and resolution 1.0 nm with a scan speed of 50 nm min^{-1} . The scans were accumulated and automatically averaged.

Molecular modeling

The X-ray data obtained for the complexes of APE1 with DNA (PDB ID 1DE8 and 4IEM, respectively) served as models of atomic structures of protein-DNA complexes with and without a Mg^{2+} ion in the active site.

Inspection of these structures revealed that structure 1DE8 represents an example of the catalytically competent



protein–DNA complex. Structure 4IEM represents the specific protein–DNA complex with the excised phosphodiester bond on the 5' side of the F-site. The contact areas ΔMS of the protein–DNA interface were calculated by subtracting the molecular surface (MS) confining the solvent-excluded volume⁴³ of the isolated protein and the DNA from that of the protein–DNA complexes, $\Delta MS = MS(\text{protein/DNA complex}) - MS(\text{protein}) - MS(\text{DNA})$, where the buried MS is negative. The MS was calculated by the SIMS method.⁴⁴ The free energy of the cavity formation in water in the process of desolvation has entropic nature and it was approximated by the linear equation $\Delta G_{\text{cav}} = \gamma \Delta MS$.⁴³ For evaluation of the entropy loss, γ was assumed to be $37 \text{ cal mol}^{-1} \text{ \AA}^{-2}$, which approximates the entropy of desolvation of nonpolar species in water.⁴⁵

Results and discussion

Effects of Mg^{2+} ions on DNA binding and catalysis

To ascertain the efficacy of APE1 binding to an F-site-containing DNA duplex at different concentrations of Mg^{2+} , the kinetics of enzyme–substrate complex formation and catalysis were studied by the stopped-flow method. The Trp fluorescence traces of APE1's reaction with the F^{13} -substrate comprised the characteristic phases (Fig. 3A), which were assigned to DNA-binding steps and catalysis in our previous reports.^{28–30} The initial double-phase decrease in the Trp fluorescence intensity could be attributed to the process of formation of a specific enzyme–substrate complex that is responsible for catalytic hydrolysis of the internucleotide phosphodiester bond. After the catalytic reaction, the enzyme–product complex dissociates, increasing the fluorescence intensity. The interaction of APE1 with the F^{13} -substrate in the presence of any concentration of Mg^{2+} caused an increase in Trp fluorescence intensity at the ends of kinetic traces. Meanwhile, the kinetic trace obtained for interaction of apo-APE1 with the F^{13} -substrate in the absence of Mg^{2+} ions did not contain the final increase phase, indicating the lack of the catalytic step.

Indeed, PAGE analysis of product accumulation showed that the rate of the catalytic reaction was strongly dependent on the concentration of Mg^{2+} (Fig. 3B).

The Trp fluorescence kinetic traces obtained in the presence or absence of Mg^{2+} ions were fitted to a triple-exponential equation ($[\text{Mg}^{2+}] = 0.05\text{--}5.0 \text{ mM}$) or a double-exponential ($[\text{Mg}^{2+}] = 0.0 \text{ mM}$) equation (eqn (3) and (2)), respectively. To further elucidate the nature of the two initial phases of the fluorescence decrease, the values of the observed rate constants at different Mg^{2+} concentrations were plotted as shown in Fig. 4A and B. As follows from Fig. 4A, the observed rate constant k_1^{Trp} of the first fast phase is independent on Mg^{2+} concentration. Our previous studies^{28,29} suggested that the fast initial phase corresponds to nonspecific random DNA binding. Therefore, the present data indicate that Mg^{2+} ions do not participate in the formation of the nonspecific enzyme–DNA complex.

The observed rate constant k_2^{Trp} of the second phase showed a hyperbolic type of dependence on the Mg^{2+} concentration. Most probably, this step corresponds to formation of the catalytic complex $(\text{E}\cdot\text{S})_2$, and Mg^{2+} ions are required for this conversion. The dependence of k_2^{Trp} on Mg^{2+} concentration was fitted to eqn (4) as shown in Fig. 4B. The rate constant of the second step is increased approximately threefold from 0 to 5.0 mM Mg^{2+} ($k_{20} = 0.9 \pm 0.1 \text{ s}^{-1}$ at $[\text{Mg}^{2+}] = 0.0 \text{ mM}$, $k_{2\text{max}} = 2.6 \pm 0.4 \text{ s}^{-1}$ at $[\text{Mg}^{2+}] \geq 5.0 \text{ mM}$). The apparent dissociation constant for the complex of Mg^{2+} with APE1 ($K_D^{\text{Mg}^{2+}}$) is equal to $1.1 \pm 0.5 \text{ mM}$.

The observed rate constants $k_{\text{cat}}^{\text{Trp}}$ of the third phases in the Trp fluorescence traces correspond to the catalytic reaction. The catalytic step was also independently characterized by direct analysis of product accumulation in PAGE time-course experiments. The rate constants of product accumulation measured by PAGE analyses, $k_{\text{obs}}^{\text{PAGE}}$, were obtained by a single-exponential fitting of kinetic traces to eqn (1), as shown in Fig. 3B. The rate constants $k_{\text{cat}}^{\text{Trp}}$ and $k_{\text{obs}}^{\text{PAGE}}$ were plotted as a

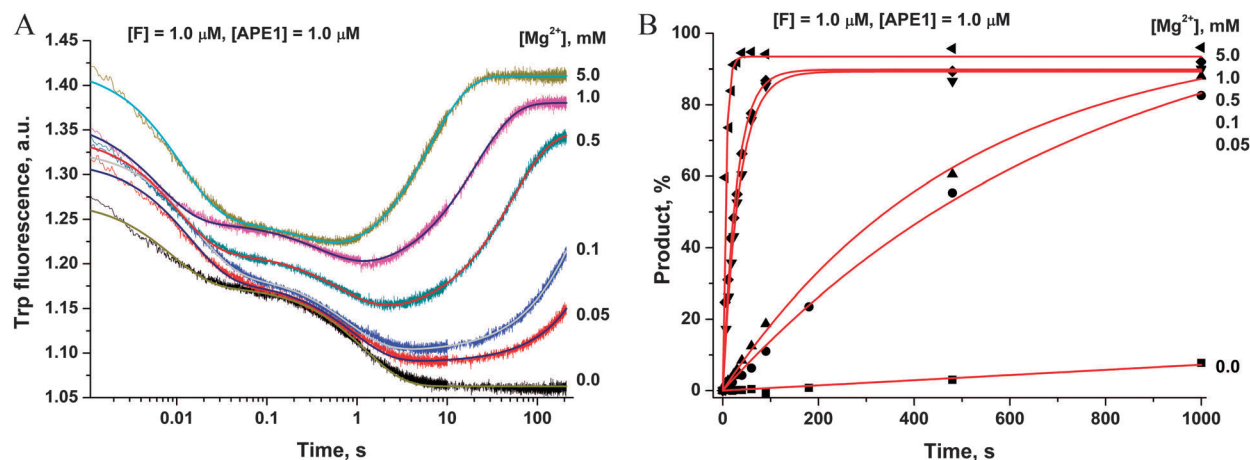


Fig. 3 Effects of Mg^{2+} ions on the interaction of APE1 with the F^{13} -substrate. (A) Stopped-flow Trp fluorescence kinetic traces. One syringe contained APE1 ($1.0 \mu\text{M}$) incubated with various concentrations of MgCl_2 . The other syringe contained the F^{13} -substrate ($1.0 \mu\text{M}$) and an equivalent concentration of MgCl_2 . Final concentrations of MgCl_2 are shown near the kinetic trace. (B) Accumulation of the reaction product as determined by PAGE.

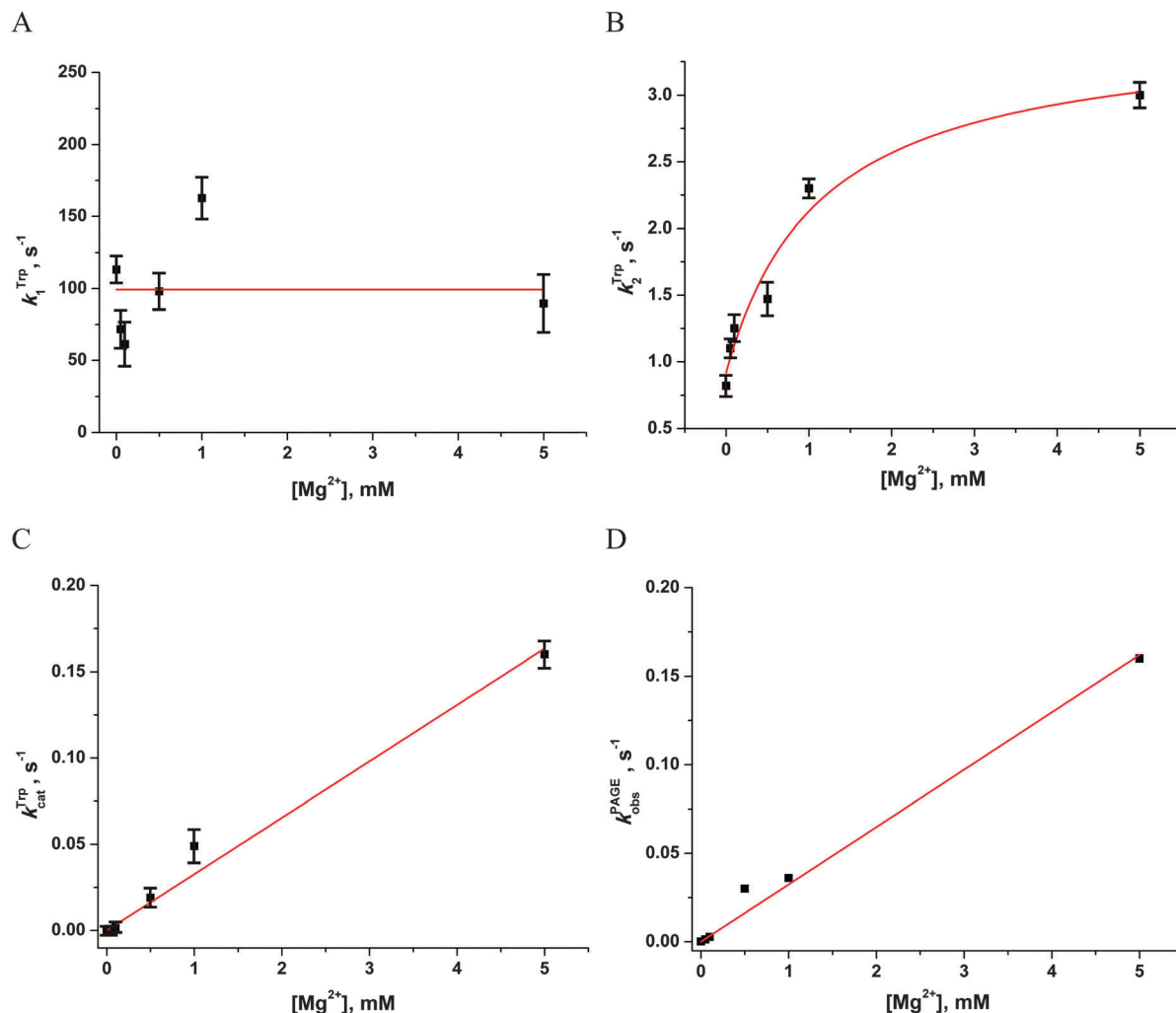


Fig. 4 Dependences of the observed rate constants k_1^{Trp} (A), k_2^{Trp} (B), $k_{\text{cat}}^{\text{Trp}}$ (C), $k_{\text{obs}}^{\text{PAGE}}$ (D) on Mg^{2+} concentration. Data presented in (A), (C) and (D) were fitted to a linear function, whereas the data presented in (B) were fitted to a hyperbolic equation (eqn (4)).

function of $[\text{Mg}^{2+}]$ (Fig. 4C and D, respectively). Both dependences were linear in relation to $[\text{Mg}^{2+}]$ and were fitted to eqn (5) to calculate coefficient B of APE1 activation by Mg^{2+} . We found that $B = 0.033 \pm 0.001 \text{ M}^{-1} \text{ s}^{-1}$ for Trp fluorescence and PAGE analyses within the analyzed range of Mg^{2+} concentrations.

Thus, our results lead to the conclusion that activation of APE1 by Mg^{2+} ions is associated with the specific interactions of divalent metal ions in the active site of the enzyme. These processes not only accelerate formation of the catalytic complex but also provide the effective proceeding of the catalytic reaction of the phosphodiester bond hydrolysis.

Influence of K^+ concentration on association and catalytic steps of the interaction of APE1 with DNA

It seems possible that the mechanism by which Mg^{2+} ions increase the rate of DNA substrate binding involves an electrostatic interaction between Mg^{2+} ions, enzyme and DNA. To determine whether the observed rate enhancements by Mg^{2+} were the result of nonspecific electrostatic effects, we added various concentrations

of monovalent cations (K^+) to reaction mixtures containing 5.0 mM Mg^{2+} (Fig. 5A).

The observed rate constant k_1^{Trp} of F^{17} -substrate binding by APE1 decreased 13.5-fold as the salt concentration was increased from 0 to 250 mM K^+ ($136.5 \pm 0.8 \text{ s}^{-1}$ and $10.1 \pm 0.4 \text{ s}^{-1}$; Fig. 5B). These data indicate that the increase in ionic strength leads to nonspecific disruption of contacts between the enzyme and the DNA, thereby inhibiting formation of the complex. It is noteworthy that the observed rate constant of the catalytic step ($k_{\text{cat}}^{\text{Trp}}$) slightly increased from $0.62 \pm 0.01 \text{ s}^{-1}$ to $0.86 \pm 0.01 \text{ s}^{-1}$ as the salt concentration was increased from 0 to 50 mM. Subsequent increases in the salt concentration led to an 18-fold decrease in $k_{\text{cat}}^{\text{Trp}}$ down to $0.048 \pm 0.003 \text{ s}^{-1}$ at 250 mM K^+ (Fig. 5C). Thus, our data reveal a significant contribution of electrostatic interactions during the binding of DNA to APE1 and catalytic-complex formation. Nevertheless, the enhancement of rates of catalytic-complex ($\text{E} \cdot \text{S}$)₂ formation and the catalytic reaction after the increase in Mg^{2+} concentration is the result of the specific role of Mg^{2+} as a cofactor of the enzymatic



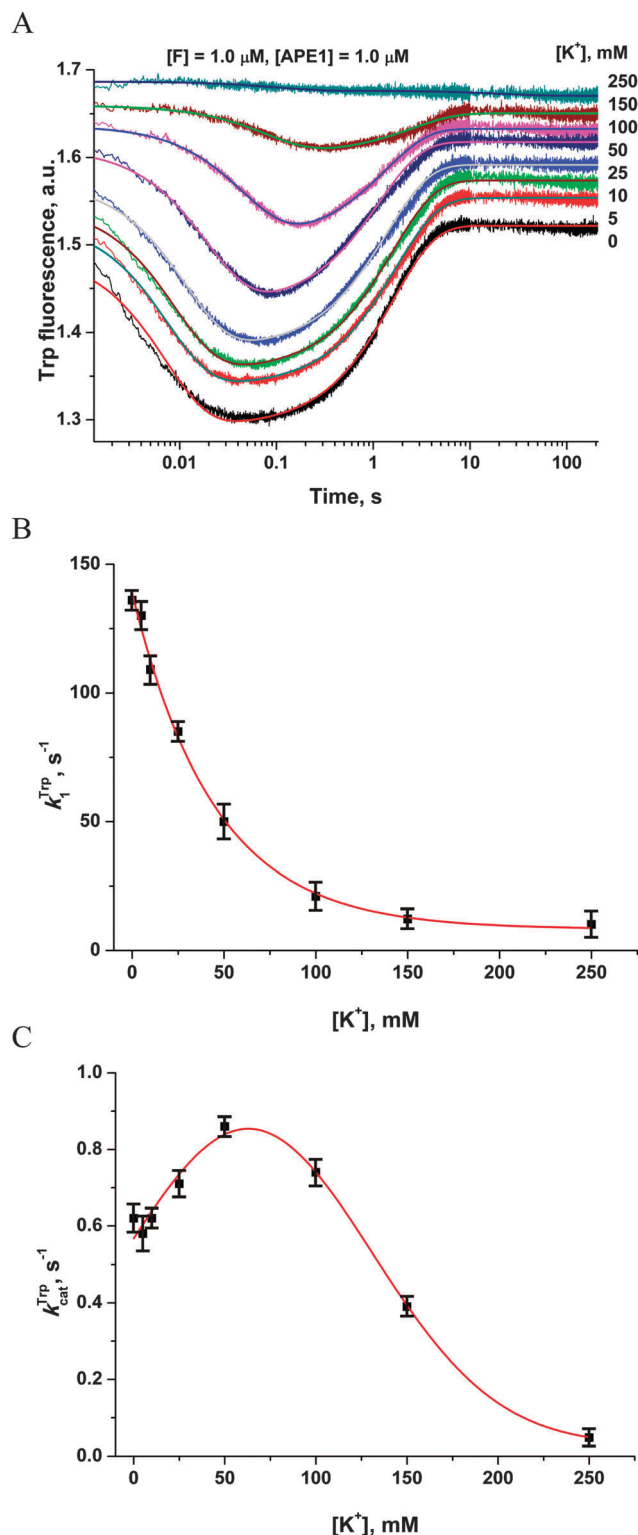


Fig. 5 Influence of monovalent cations (K^+) on APE1 activity. (A) Stopped-flow Trp fluorescence kinetic traces. One syringe contained APE1 (1.0 μ M) that had been incubated with various concentrations of KCl. The other syringe contained the F^{17} -substrate (1.0 μ M) and an equivalent concentration of KCl. The final concentration of KCl is shown on the right. (B and C) Values of k_1^{Trp} (B) and k_{cat}^{Trp} (C) determined by double-exponential fitting (eqn (2)) of kinetic traces (A). The smoothed curves (B) and (C) are presented only to highlight the trends and do not represent theoretical fits to the data.

process, which is observed at much lower concentrations of this cation.

Effects of a metal's nature on DNA binding and catalysis

Analysis of Trp fluorescence traces. As shown above, DNA binding and subsequent F-site cleavage by APE1 are accompanied with structural rearrangements. These processes are well resolved by Trp fluorescence changes. To identify the role of divalent metal ions in DNA binding and catalysis, we examined the effects of Mg^{2+} , Ca^{2+} , Ni^{2+} , Mn^{2+} , Zn^{2+} , and Cu^{2+} on the Trp fluorescence traces in stopped-flow experiments (Fig. 6).

First of all, the catalytic activity of APE1 was abrogated by treatment with EDTA, which causes formation of apo-protein without any metal ions in the active site. We examined the interaction of apo-APE1 with the F^{13} -substrate to record the conformational changes of the protein during binding of DNA (Fig. 6A). The initial phase of the fluorescence decrease was well resolved in the kinetic traces at all DNA concentrations. The subsequent increase phase was well resolved at low DNA concentrations (0.25–1.0 μ M) and was followed by the second phase of a decrease in the fluorescence intensity. The rate constants of individual reaction steps (Table 2) were extracted from global fitting of the fluorescence data to the three-step binding model (Scheme 2). The absence of the increase phase at the end of Trp fluorescence kinetic traces as well as the lack of product accumulation in the PAGE analysis (Fig. 7) reveal complete inactivation of APE1 by the EDTA treatment.

In the presence of Ca^{2+} ions (in comparison with the absence of metals) the transient increase phase disappears (Fig. 6B) and kinetic traces of DNA binding were fitted best to the two-step binding model (Scheme 3).

In the presence of Cu^{2+} ions in the reaction mixture, APE1 completely loses the DNA binding ability; this situation leads to the absence of any Trp fluorescence changes (data not shown). This inhibitory effect is probably associated with strong interactions of Cu^{2+} ions with DNA bases and phosphate groups.⁴⁶

As shown in Fig. 6C–F, the fluorescence traces, which characterize the interaction of APE1 with the F^{13} -substrate in the presence of Mg^{2+} , Ni^{2+} , Mn^{2+} and Zn^{2+} ions, have the similar shapes. An initial decrease in fluorescence intensity during DNA binding and formation of the catalytic complex is followed by an increase in fluorescence intensity at the time points more than 10 s, indicating a release of the enzyme from the complex with the reaction product. It should be noted that in the presence of different metal ions, the DNA binding as well as the catalytic reaction and the dissociation of the enzyme-product complex proceeded in separate time ranges. The minimal kinetic scheme (Scheme 1) describing the observed changes in Trp fluorescence intensity contains two initial equilibrium steps that characterize substrate binding followed by an irreversible chemical step and the next equilibrium step for the product release. The rate constants obtained by global fitting are listed in Table 2.

Values of the constants obtained by the global fitting of data to Scheme 1 showed that the first DNA-binding steps have similar K_1 values (0.3×10^{-6} M and 0.11×10^{-6} M) for apo-APE1 and APE1 in the presence of Mg^{2+} ions (Table 2). These data are in agreement



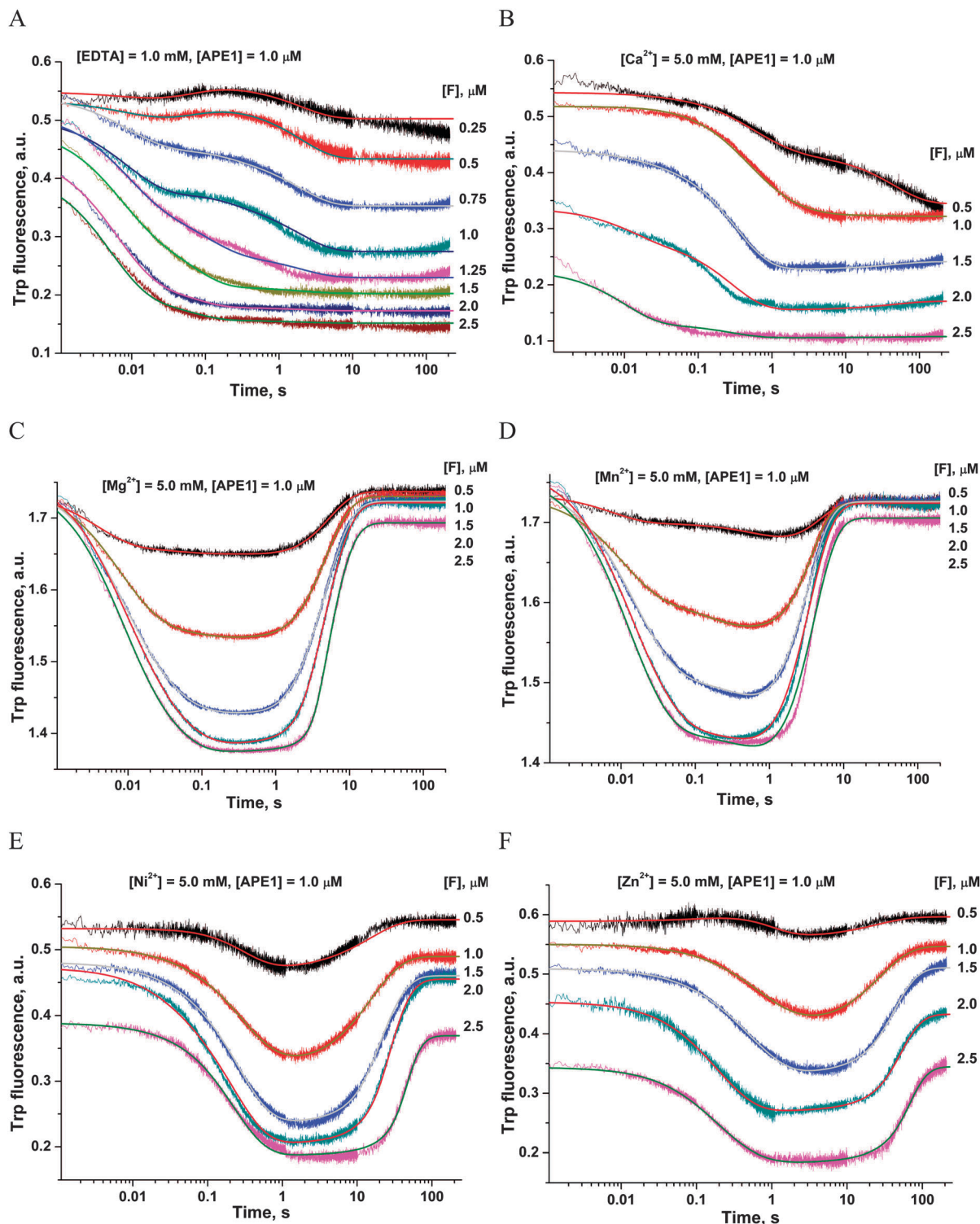


Fig. 6 Effects of metal ions on the interaction of APE1 with the F^{13} -substrate: (A) metal ions are absent, (B) Ca^{2+} , (C) Mg^{2+} , (D) Mn^{2+} , (E) Ni^{2+} , and (F) Zn^{2+} . Stopped-flow Trp fluorescence kinetic traces are shown. One syringe contained APE1 ($1.0 \mu M$) that had been incubated for 5 min with $MeCl_2$ (5.0 mM). The other syringe contained various concentrations of the F^{13} -substrate incubated for 5 min with $MeCl_2$ (5.0 mM).

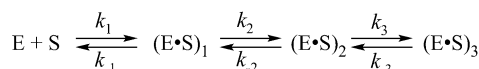
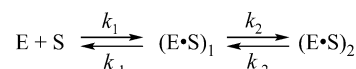
with the observed independence of the binding rate constant k_{Trp} (determined here) on the Mg^{2+} concentration (Fig. 4A). The above data are also in line with the conclusion that incorporation of a Mg^{2+} ion into the active site of the enzyme does not

affect the initial DNA binding. In comparison with our data on Mg^{2+} ions, the rate constants of the forward reaction k_1 were approximately twofold lower for the Ni^{2+} , Mn^{2+} and Zn^{2+} ions, and the rate constants of the reverse reaction k_{-1} were at least



Table 2 The rate and equilibrium constants of the interaction of APE1 with the F¹³-substrate in the presence of various divalent metal ions^a

Constants	Me ²⁺	Mg ²⁺	Mn ²⁺	Ni ²⁺	Zn ²⁺	Ca ²⁺	No metal
$k_1, \text{M}^{-1} \text{s}^{-1}$		$(90 \pm 10) \times 10^6$	$(40 \pm 7) \times 10^6$	$(50 \pm 15) \times 10^6$	$(35 \pm 8) \times 10^6$	$(70 \pm 20) \times 10^6$	$(100 \pm 10) \times 10^6$
k_{-1}, s^{-1}		10.1 ± 4.3	28 ± 12	45 ± 17	75 ± 20	50 ± 16	32 ± 15
K_1, M		$(0.11 \pm 0.05) \times 10^{-6}$	$(0.7 \pm 0.2) \times 10^{-6}$	$(0.9 \pm 0.4) \times 10^{-6}$	$(2.1 \pm 0.7) \times 10^{-6}$	$(0.7 \pm 0.3) \times 10^{-6}$	$(0.3 \pm 0.1) \times 10^{-6}$
k_2, s^{-1}		43.1 ± 8.5	34.8 ± 12.7	5.7 ± 0.6	8.2 ± 0.9	9.4 ± 2.4	14 ± 6
k_{-2}, s^{-1}		7.1 ± 1.6	2.6 ± 1.0	0.03 ± 0.02	0.04 ± 0.03	$(1.9 \pm 1.0) \times 10^{-3}$	22 ± 12
K_2		0.16 ± 0.05	0.075 ± 0.04	$(5.3 \pm 3.5) \times 10^{-3}$	$(4.9 \pm 3.7) \times 10^{-3}$	$(2.0 \pm 1.1) \times 10^{-4}$	1.6 ± 1.1
k_3, s^{-1}							6.3 ± 1.9
k_{-3}, s^{-1}							$(1.2 \pm 0.8) \times 10^{-2}$
K_3							$(1.9 \pm 1.3) \times 10^{-3}$
$k_{\text{cat}}, \text{s}^{-1}$		0.3 ± 0.1	0.3 ± 0.1	0.055 ± 0.007	0.041 ± 0.004		
$k_{\text{PAGE}}, \text{s}^{-1}$		0.28 ± 0.01	0.19 ± 0.07	0.11 ± 0.01	0.05 ± 0.01	ND ^b	ND
K_{p}, M		$(7.2 \pm 0.4) \times 10^{-6}$	$(8.4 \pm 0.3) \times 10^{-6}$	$(6.6 \pm 1.7) \times 10^{-6}$	$(4.5 \pm 1.3) \times 10^{-6}$		

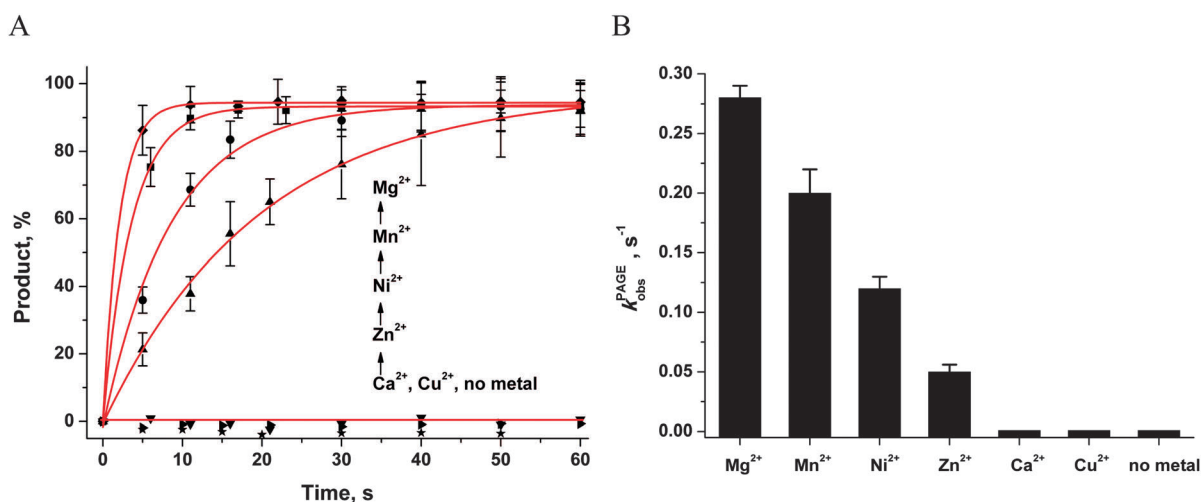
^a $K_i = k_{-i}/k_i$. ^b ND, not detectable.**Scheme 2** where E is APE1, S is the substrate, (E·S)_i are enzyme–substrate complexes, and k_i and k_{-i} are the rate constants of equilibrium steps.**Scheme 3** where E is APE1, S is the substrate, (E·S)_i are enzyme–substrate complexes, and k_i and k_{-i} are the rate constants of equilibrium steps.

threefold higher for ions Ni²⁺, Mn²⁺, Ca²⁺ and Zn²⁺. Therefore, K_1 values that were obtained for these metal ions are at least 6.4-fold higher ($0.7\text{--}2.1 \times 10^{-6}$ M) than K_1 obtained in the presence of Mg²⁺ (0.11×10^{-6} M). These data support the idea that the initial nonspecific DNA binding by APE1 is slightly inhibited by ions Ni²⁺, Mn²⁺, Ca²⁺ or Zn²⁺, probably due to their ability to directly bind DNA and induce partial disordering of the backbone, base stacking, and pairing.⁴⁶ Moreover, the increase in the value of the forward rate constant k_1 correlates with the affinity of these ions to DNA bases: Cu²⁺ >> Zn²⁺ > Mn²⁺ > Ni²⁺ > Ca²⁺ > Mg²⁺.^{46,47} It is known that metal ions with the strongest affinity to nucleobases apparently perturb the hydrogen bonding between base pairs, thus destabilizing DNA. At the same time, the cations with higher binding specificity to

the phosphates stabilize DNA, apparently through neutralization of the charges of the sugar–phosphate backbone.

The second DNA binding step in Scheme 1 characterizes the formation of the catalytically competent enzyme–DNA complex. The specific contacts with a metal ion placed in the active site should form during this step. It is worth noting that the rate constant of the forward reaction k_2 was at least 4.6-fold higher for the natural Mg²⁺ ion as compared to other metals, excepting Mn²⁺ (Table 2). The rate constant of the reverse reaction k_{-2} as well as the equilibrium dissociation constant K_2 were the highest in the case of apo-APE1, thus indicating that a metal ion is required for stabilization of catalytic complex (E·S)₂.

Surrogate metal ions stabilize the (E·S)₂ complex better than the Mg²⁺ ion can. The value of the K_2 constant was at least

**Fig. 7** Effects of divalent metal ions on the accumulation of the reaction product, as determined by PAGE. (A) Accumulation of the reaction product as determined by PAGE. (B) Dependence of the catalytic rate constant $k_{\text{PAGE}}^{\text{obs}}$ on the nature of metal ions. [APE1] = [F] = 1.0 μM, [MeCl₂] = 5.0 mM.

30-fold higher for the Mg^{2+} ion in comparison with Ca^{2+} , Zn^{2+} , and Ni^{2+} . It is noteworthy that the formation of catalytic complex $(\text{E}\cdot\text{S})_2$ in the presence of natural Mg^{2+} or surrogate Mn^{2+} ions is characterized by sufficiently similar rate and equilibrium constants (Table 2).

The equilibrium constant K_p of the last step in Scheme 1 was independent of the nature of a metal ion (Table 2), indicating that divalent metal ions do not affect the product release from the complex with the enzyme.

The ability of divalent metal ions to get incorporated into the active site of the enzyme can depend on their ionic radii. Effective ionic radii of metal ions (coordination number = 6) are 1.0 Å for Ca^{2+} , 0.74 Å for Zn^{2+} , 0.73 Å for Cu^{2+} , 0.72 Å for Mg^{2+} , 0.69 Å for Ni^{2+} , and 0.67–0.83 Å for Mn^{2+} .⁴⁸ The largest ion (Ca^{2+}) apparently does not create a correct binding site and cannot ensure normal catalytic activity (Fig. 6B and 7). The Trp fluorescence data (Fig. 6) and direct detection of product formation by PAGE (Fig. 7) allow us to rank the efficiency of metal ions in catalysis as $\text{Mg}^{2+} > \text{Mn}^{2+} > \text{Ni}^{2+} > \text{Zn}^{2+}$; this result is in accord with earlier studies.^{49,50}

FRET analysis. A dye-labeled FAM-F-substrate was used for FRET analysis of DNA distortion processes and of the F-site cleavage reaction. As shown in Fig. 8, the changes in FAM fluorescence during the interaction of APE1 with the FAM-F-substrate lead to a fast decrease in the fluorescence intensity (within 20 ms) followed by the increase phase in the time range 50 ms to 5 s. It is possible that the initial decrease in the FRET signal reflects the decrease in the distance between FAM and quenching BHQ1 residues because of DNA bending in the complex with APE1. This step was detected both in the case of substrate interaction with apo-APE1 and in the presence of any divalent metal ion with the exception of Cu^{2+} . The increase in FAM fluorescence intensity in the next phase most likely reflects a release of the cleaved DNA product from the complex with the enzyme.

The kinetic curves were fitted to a double-exponential equation (eqn (2)). It should be noted that the rate constants of complex formation, k_1^{FAM} , in the case of apo-APE1 and in the presence of Mg^{2+} ions (Fig. 8B) were similar, whereas the surrogate metals caused a slight decrease in the rate constant of catalytic-complex formation. The effect followed in the order: $\text{Mg}^{2+} > \text{Mn}^{2+} > \text{Ni}^{2+} \approx \text{Zn}^{2+} > \text{Ca}^{2+}$. The catalytic rate constant $k_{\text{cat}}^{\text{FAM}}$ was decreased in accordance with the following order: $\text{Mg}^{2+} \approx \text{Mn}^{2+} > \text{Ni}^{2+} \approx \text{Zn}^{2+} > \text{Ca}^{2+}$, Cu^{2+} , no metal (Fig. 8C).

Activation of APE1 by Mg^{2+} in the complex with DNA. The F-substrates were preincubated with apo-APE1 to form the enzyme–substrate complex and then mixed with a buffer with or without 5.0 mM MgCl_2 (Fig. 9). The Trp and FAM fluorescence data were recorded to detect the conformational changes of the enzyme and DNA substrate, respectively, that are induced by Mg^{2+} binding. The stopped-flow kinetic curve obtained during the interaction of the apo-APE1-F¹³-substrate complex with Mg^{2+} ions was characterized by a single increase in the fluorescent signal in the time range 0.5–20.0 s. As shown above, the increase in the Trp fluorescence corresponds to the catalytic reaction. This result indicates that penetration of Mg^{2+} ions

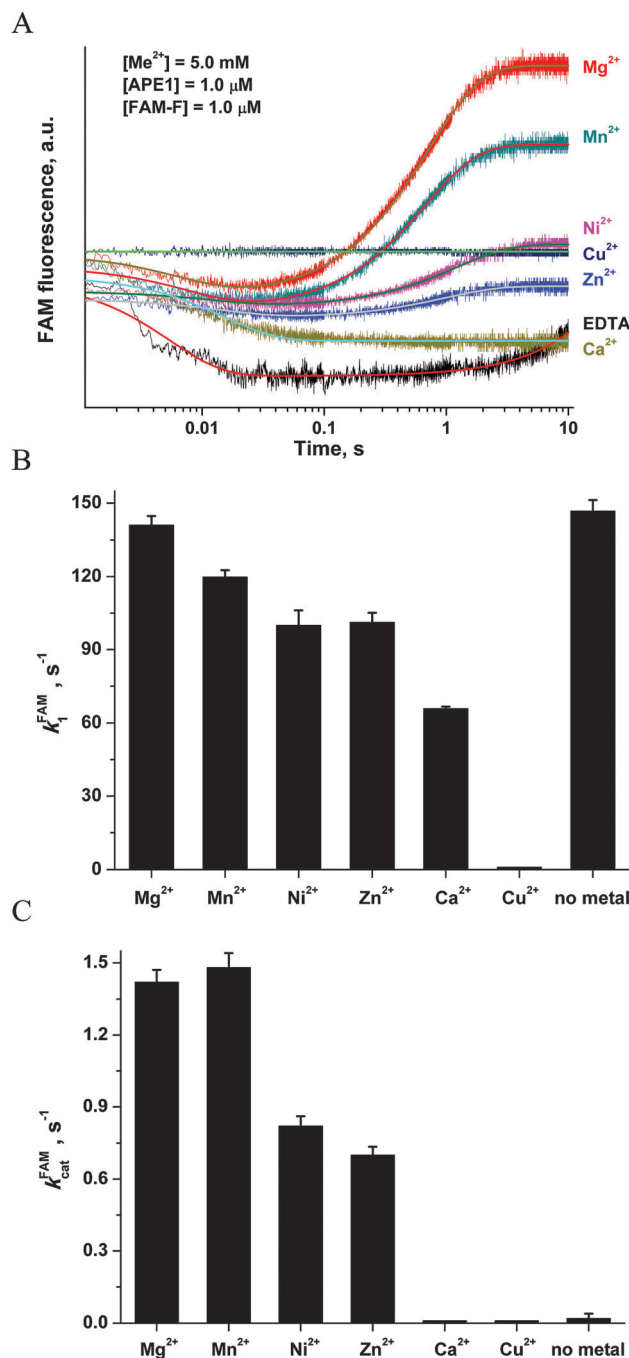


Fig. 8 (A) FAM/BHQ1 FRET traces of the interaction of APE1 with the FAM-F-substrate. One syringe contained APE1 (1.0 μM) that was preincubated for 5 min with MgCl_2 (5.0 mM). The other syringe contained the FAM-F-substrate (1.0 μM) preincubated for 5 min with MgCl_2 (5.0 mM). Jagged traces represent experimental data; smooth curves are the results of fitting of kinetic traces to eqn (2). (B) Dependence of the k_1^{FAM} value on the nature of metal ions. (C) Dependence of the $k_{\text{cat}}^{\text{FAM}}$ value on the nature of metal ions. The values of k_1^{FAM} and $k_{\text{cat}}^{\text{FAM}}$ were determined by fitting the kinetic traces to eqn (2).

into the active site of apo-APE1 leads to formation of a catalytically active state of the enzyme without induction of changes in Trp fluorescence. Therefore, Trp fluorescence is sensitive only to DNA substrate binding and product dissociation; this observation additionally supports the idea that the Trp-280



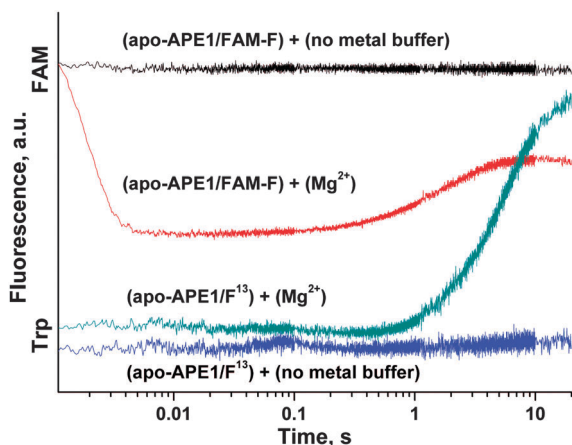


Fig. 9 Activation of apo-APE1 by Mg^{2+} ions in the complexes with F^{13-} and FAM-F-substrates. One syringe contained apo-APE1 (1.0 μM) and F^{13-} or FAM-F-substrates (1.0 μM) in a buffer (50 mM Tris-HCl pH 6.8, 50 mM KCl, 1.0 mM EDTA, 1.0 mM DDT) preincubated for 5 min. Another syringe contained the same buffer with or without 5.0 mM MgCl_2 . In the cases of F^{13-} and FAM-F-substrates, Trp or FAM fluorescence was recorded, respectively.

residue located in the DNA-binding pocket is responsible for the changes in Trp fluorescence.

At the same moment, penetration of the Mg^{2+} ion into the active site of apo-APE1 in complex with the FAM-F-substrate leads to a fast initial decrease (within 5 ms) in the FAM fluorescence intensity. This finding indicates that the binding of the Mg^{2+} ion to the enzyme proceeds rapidly and induces additional duplex bending, probably, *via* formation of the direct Mg^{2+} bridges between the 5'-phosphate group of the F-site and Asp-308, Glu-96, and Asp-70 side groups. The hydrolysis of the 5'-phosphodiester bond of the F-site leads to a product release causing the increase in FAM fluorescence intensity in the time range 0.2–10.0 s. The phase of the FAM fluorescence increase substantially coincides with the phase of the increase in Trp fluorescence, indicating that both fluorescence changes correspond to the same process of dissociation of the enzyme-product complex.

CD analysis. CD experiments were conducted to determine the extent of changes in conformations of DNA and APE1 after Me^{2+} binding. The CD spectrum of the F^{13-} -substrate was monitored in the presence of 5.0 mM divalent metal ions. As shown in Fig. 10A, the B-form of DNA shows two conservative CD bands in the UV region: a positive band at 275 nm due to base stacking and a negative band at 236 nm due to oligonucleotide helicity. The CD spectra revealed that Me^{2+} ions do not lead to any significant change in the conformation of the F^{13-} -substrate. As shown in Fig. 10B, CD spectra of APE1 contain two negative bands near 208 and 222 nm, which are characteristics of the α -helical structure of a protein.^{51,52} The band near 222 nm is observed due to the strong hydrogen-bonding interior of this conformation. This transition is relatively independent of the length of the helix. On the other hand, intensity of the negative band near 208 nm is reduced in short helices. It should be noted that the negative band near 208 nm is affected by the absence or presence of Me^{2+} ions. Each metal ion tested (Mg^{2+} , Mn^{2+} , Ca^{2+} , and Zn^{2+}) decreases the ellipticity at 208 nm, suggesting that they induce structural rearrangements of the enzyme. It should be noted that Cu^{2+} and Ni^{2+} ions significantly increased the noise in wavelength ranges 200–300 and 200–230 nm, respectively (data not shown), preventing the recording of CD spectra in the presence of these metal ions.

Molecular modeling of the enzyme–DNA complex

The formation of the enzyme–substrate complexes should result in the formation of specific contacts between the enzyme and DNA substrate and the increase of total contact area between two biopolymers. The Mg^{2+} ion, which is required for coordination of the phosphate group in the active site and for the display of activity in the catalytic reaction, should provide additional stabilization of the enzyme–substrate complex. To estimate the effect of the Mg^{2+} ion on the stability of the enzyme–substrate complex, we calculated the molecular contact area and the total energy of the binding of DNA to APE1 in the absence and presence of a metal ion in the active site. For these purposes, crystal structures of the APE1–DNA complexes

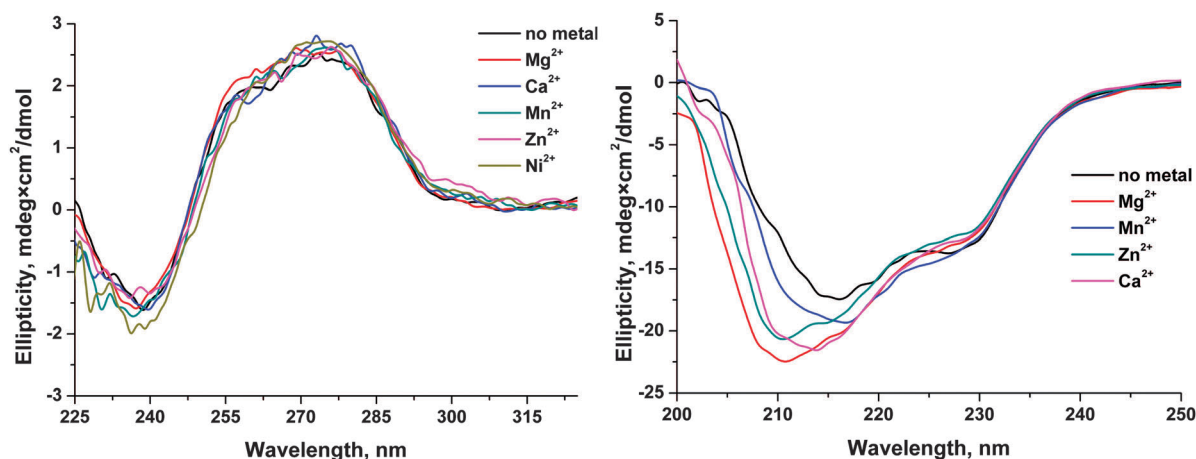


Fig. 10 CD spectra of the F^{13-} -substrate (A) and APE1 (B) in the absence and presence of a metal ion.

(PDB ID: 1DE8 and 4IEM) have been analyzed. The 1DE8 structure was used as a model of the complex of APE1 with DNA (substrate) in the absence of metal ions in the active site. The 4IEM structure corresponded to the complex of APE1 with the DNA product containing the Mg^{2+} ion. It should be noted that the DNA duplexes in both complexes had the same context. Using SIMS method⁴⁴ it was calculated that the contact area ($\Delta MS = 1382.5 \text{ \AA}^2$) of APE1 with the DNA (substrate) in the absence of metal ions was at 141.4 \AA^2 , i.e., lower than the contact area of APE1 with the DNA product in the presence of Mg^{2+} ion ($\Delta MS = 1523.9 \text{ \AA}^2$). These data indicate that the complex of the enzyme with a reaction product in the presence of a Mg^{2+} ion is energetically more favorable (the difference between the total binding energy of $5.4 \text{ kcal mol}^{-1}$) and more stable than the complex of APE1 with the DNA (substrate) in the absence of metal ions.

Conclusions

The effects of monovalent (K^+) and divalent (Mg^{2+} , Mn^{2+} , Ca^{2+} , Zn^{2+} , Cu^{2+} , and Ni^{2+}) metal ions on the activity of human apurinic/apyrimidinic endonuclease 1 (APE1) were analyzed by detection of Trp and FAM fluorescence intensities to determine the conformational changes of enzyme and specific DNA substrates, respectively, during their interaction. Analysis of the dependence of the observed rate constants on Mg^{2+} concentration clearly showed that Mg^{2+} ions have no effect on the initial formation of the enzyme–DNA complex. In contrast, the formation of the catalytic complex as well as the rate of the catalytic reaction depends on the concentration of Mg^{2+} . On the other hand, monovalent ion (K^+) significantly reduces the rate of the initial enzyme–DNA complex formation, presumably, due to a nonspecific charge-shielding effect. It was shown that the nature of a divalent metal ion influenced both on the processes of DNA binding and on the catalytic hydrolysis of the 5'-phosphodiester bond. Cu^{2+} ions completely inhibited the binding of DNA by APE1, probably due to strong binding of Cu^{2+} to DNA bases and to the sugar–phosphate backbone. In the case of Ca^{2+} ion, possibly, its large ionic radius does not allow this ion to be properly situated in the active site and thereby abrogates the catalytic activity of the enzyme and decreases the DNA-binding ability. The other tested ions reduce enzymatic activity of APE1 in the order $Mg^{2+} > Mn^{2+} > Ni^{2+} > Zn^{2+}$. Moreover, CD analysis of APE1 revealed that these metal ions induce a structural rearrangement of the enzyme. Calculations of the molecular contact area and of the total energy of DNA binding by APE1 in the absence or presence of a Mg^{2+} ion in the active site show that Mg^{2+} ion stabilizes the enzyme–DNA complex and increases the catalytic activity. Therefore, these metal ions have multiple effects both on the ability to direct DNA binding and on the structure of the enzyme.

Abbreviations

APE1	AP endonuclease
AP-site	Apurinic/apyrimidinic site
F-site	(3-Hydroxytetrahydrofuran-2-yl)methyl phosphate
ODN	Oligodeoxyribonucleotide

PAGE	Polyacrylamide gel electrophoresis
BER	Base excision repair
FRET	Förster resonance energy transfer

Acknowledgements

This research was supported by the Russian Academy of Sciences “Molecular & Cell Biology” Program [O. S. F. grant no. 6.11 (0309-2015-0025)]; grants from the Russian Foundation for Basic Research [O. S. F. 16-04-00037, A. A. K. 15-04-00467 and N. A. K. 15-34-20121] and Russian Ministry of Education and Science [SS-7564.2016.4]. Part of the work with stopped-flow experiments was specifically funded by Russian Science Foundation [grant no. 14-14-00063] to N. A. K.

References

- 1 E. C. Friedberg, G. C. Walker, W. Siede, R. D. Wood, R. A. Schultz and T. Ellenberger, *DNA Repair and Mutagenesis*, ASM Press, Washington, 2006.
- 2 T. Lindahl and B. Nyberg, *Biochemistry*, 1972, **11**, 3610–3618.
- 3 D. M. Wilson III and D. Barsky, *Mutat. Res.*, 2001, **485**, 283–307.
- 4 L. A. Loeb and B. D. Preston, *Annu. Rev. Genet.*, 1986, **20**, 201–230.
- 5 R. M. Schaaper, T. A. Kunkel and L. A. Loeb, *Proc. Natl. Acad. Sci. U. S. A.*, 1983, **80**, 487–491.
- 6 C. D. Mol, S. S. Parikh, C. D. Putnam, T. P. Lo and J. A. Tainer, *Annu. Rev. Biophys. Biomol. Struct.*, 1999, **28**, 101–128.
- 7 S. S. David and S. D. Williams, *Chem. Rev.*, 1998, **98**, 1221–1261.
- 8 B. Demple and J.-S. Sung, *DNA Repair*, 2005, **4**, 1442–1449.
- 9 N. S. Dyrkheeva, S. N. Khodyreva and O. I. Lavrik, *Mol. Biol.*, 2007, **41**, 450–466.
- 10 M. Li and D. M. Wilson 3rd, *Antioxid. Redox Signaling*, 2014, **20**, 678–707.
- 11 H. Fung and B. Demple, *Mol. Cell*, 2005, **17**, 463–470.
- 12 G. Kaur, R. P. Cholia, A. K. Mantha and R. Kumar, *J. Med. Chem.*, 2014, **57**, 10241–10256.
- 13 N. A. Kuznetsov, M. S. Kupryushkin, T. V. Abramova, A. A. Kuznetsova, A. D. Miroshnikova, D. A. Stetsenko, D. V. Pyshnyi and O. S. Fedorova, *Mol. BioSyst.*, 2015, **12**, 67–75.
- 14 M. A. Gorman, S. Morera, D. G. Rothwell, E. de La Fortelle, C. D. Mol, J. A. Tainer, I. D. Hickson and P. S. Freemont, *EMBO J.*, 1997, **16**, 6548–6558.
- 15 P. T. Beernink, B. W. Segelke, M. Z. Hadi, J. P. Erzberger, D. M. Wilson 3rd and B. Rupp, *J. Mol. Biol.*, 2001, **307**, 1023–1034.
- 16 B. A. Manvilla, E. Pozharski, E. A. Toth and A. C. Drohat, *Acta Crystallogr., Sect. D: Biol. Crystallogr.*, 2013, **69**, 2555–2562.
- 17 C. D. Mol, T. Izumi, S. Mitra and J. A. Tainer, *Nature*, 2000, **403**, 451–456.
- 18 C. D. Mol, D. J. Hosfield and J. A. Tainer, *Mutat. Res.*, 2000, **460**, 211–229.



- 19 S. E. Tsutakawa, D. S. Shin, C. D. Mol, T. Izumi, A. S. Arvai, A. K. Mantha, B. Szczesny, I. N. Ivanov, D. J. Hosfield, B. Maiti, M. E. Pique, K. A. Frankel, K. Hitomi, R. P. Cunningham, S. Mitra and J. A. Tainer, *J. Biol. Chem.*, 2013, **288**, 8445–8455.
- 20 S. T. Mundle, M. H. Fattal, L. F. Melo, J. D. Coriolan, N. E. O'Regan and P. R. Strauss, *DNA Repair*, 2004, **3**, 1447–1455.
- 21 S. T. Mundle, J. C. Delaney, J. M. Essigmann and P. R. Strauss, *Biochemistry*, 2009, **48**, 19–26.
- 22 A. S. Lipton, R. W. Heck, S. Primak, D. R. McNeill, D. M. Wilson 3rd and P. D. Ellis, *J. Am. Chem. Soc.*, 2008, **130**, 9332–9341.
- 23 N. Oezguen, C. H. Schein, S. R. Peddi, T. D. Power, T. Izumi and W. Braun, *Proteins*, 2007, **68**, 313–323.
- 24 Y. Masuda, R. A. Bennett and B. Dimple, *J. Biol. Chem.*, 1998, **273**, 30360–30365.
- 25 J. P. Erzberger and D. M. Wilson 3rd, *J. Mol. Biol.*, 1999, **290**, 447–457.
- 26 H. He, Q. Chen and M. M. Georgiadis, *Biochemistry*, 2014, **53**, 6520–6529.
- 27 B. D. Freudenthal, W. A. Beard, M. J. Cuneo, N. S. Dyrkheeva and S. H. Wilson, *Nat. Struct. Mol. Biol.*, 2015, **22**, 924–931.
- 28 N. A. Timofeyeva, V. V. Koval, D. G. Knorre, D. O. Zharkov, M. K. Saparbaev, A. A. Ishchenko and O. S. Fedorova, *J. Biomol. Struct. Dyn.*, 2009, **26**, 637–652.
- 29 L. Y. Kanazhevskaya, V. V. Koval, D. O. Zharkov, P. R. Strauss and O. S. Fedorova, *Biochemistry*, 2010, **49**, 6451–6461.
- 30 L. Y. Kanazhevskaya, V. V. Koval, Y. N. Vorobjev and O. S. Fedorova, *Biochemistry*, 2012, **51**, 1306–1321.
- 31 A. A. Kuznetsova, N. A. Kuznetsov, A. A. Ishchenko, M. K. Saparbaev and O. S. Fedorova, *Biochim. Biophys. Acta*, 2014, **1840**, 3042–3051.
- 32 M. M. Bradford, *Anal. Biochem.*, 1976, **72**, 248–254.
- 33 N. A. Kuznetsov, V. V. Koval, D. O. Zharkov, G. A. Nevinsky, K. T. Douglas and O. S. Fedorova, *Nucleic Acids Res.*, 2005, **33**, 3919–3931.
- 34 N. A. Kuznetsov, V. V. Koval, G. A. Nevinsky, K. T. Douglas, D. O. Zharkov and O. S. Fedorova, *J. Biol. Chem.*, 2007, **282**, 1029–1038.
- 35 A. A. Kuznetsova, N. A. Kuznetsov, A. A. Ishchenko, M. K. Saparbaev and O. S. Fedorova, *Biochim. Biophys. Acta*, 2014, **1840**, 387–395.
- 36 P. Kuzmic, *Anal. Biochem.*, 1996, **237**, 260–273.
- 37 N. A. Kuznetsov, Y. N. Vorobjev, L. N. Krasnoperov and O. S. Fedorova, *Nucleic Acids Res.*, 2012, **40**, 7384–7392.
- 38 N. A. Kuznetsov, V. V. Koval, D. O. Zharkov and O. S. Fedorova, *DNA Repair*, 2012, **11**, 884–891.
- 39 N. A. Kuznetsov, D. O. Zharkov, V. V. Koval, M. Buckle and O. S. Fedorova, *Biochemistry*, 2009, **48**, 11335–11343.
- 40 V. V. Koval, N. A. Kuznetsov, A. A. Ishchenko, M. K. Saparbaev and O. S. Fedorova, *Mutat. Res.*, 2010, **685**, 3–10.
- 41 N. A. Kuznetsov, A. A. Kuznetsova, Y. N. Vorobjev, L. N. Krasnoperov and O. S. Fedorova, *PLoS One*, 2014, **9**, e98495.
- 42 N. A. Kuznetsov, O. A. Kladova, A. A. Kuznetsova, A. A. Ishchenko, M. K. Saparbaev, D. O. Zharkov and O. S. Fedorova, *J. Biol. Chem.*, 2015, **290**, 14338–14349.
- 43 Y. N. Vorobjev, *Adv. Protein Chem. Struct. Biol.*, 2011, **85**, 281–322.
- 44 Y. N. Vorobjev and J. Hermans, *Biophys. J.*, 1997, **73**, 722–732.
- 45 G. D. Rose and R. Wolfenden, *Annu. Rev. Biophys. Biomol. Struct.*, 1993, **22**, 381–415.
- 46 J. Duguid, V. A. Bloomfield, J. Benevides and G. J. Thomas, *Biophys. J.*, 1993, **65**, 1916–1928.
- 47 E. V. Hackl, S. V. Kornilova and Y. P. Blagoi, *Int. J. Biol. Macromol.*, 2005, **35**, 175–191.
- 48 R. D. Shannon, *Acta Crystallogr.*, 1976, **32**, 751–767.
- 49 G. Barzilay, C. D. Mol, C. N. Robson, L. J. Walker, R. P. Cunningham, J. A. Tainer and I. D. Hickson, *Nat. Struct. Biol.*, 1995, **2**, 561–568.
- 50 K. M. Schermerhorn and S. Delaney, *Biochemistry*, 2013, **52**, 7669–7677.
- 51 N. J. Greenfield, *Anal. Biochem.*, 1996, **235**, 1–10.
- 52 J. T. Pelton and L. R. McLean, *Anal. Biochem.*, 2000, **277**, 167–176.

