

PAPER

View Article Online
View Journal | View Issue



Cite this: *Environ. Sci.: Adv.*, 2023, 2, 695

Extensive rainfall data analysis: event separation from continuous record, fitting of theoretical distributions, and event-based trend detection†

Aniekan E. Essien, * Yiping Guo  and Sarah E. Dickson-Anderson 

The impact of climate change on the environment, particularly water resources, can never be over-emphasized. Therefore, it is imperative to continuously study and understand climate data, especially on a regional scale. This paper used the sites in the four nations' capitals in the United Kingdom as the study areas with extensive rainfall data collected from a total of six weather stations. The article is the first study conducted on extensive hourly rainfall data observed at selected weather stations in the four nations of the UK for exponentiality testing of their rainfall characteristics before carrying out a comprehensive comparative analysis of their distribution parameters and conducting event-based trend analysis to investigate the potential impact of climate change on the regional rainfall characteristics. Several earlier studies have considered separating continuous rainfall data into individual rainfall events as the most challenging and time-consuming aspect of rainfall data analysis. Therefore, first, this paper provided a step-by-step guide on rainfall event separation, especially for data with missing values, before conducting frequency analysis to test the exponentiality of rainfall event characteristics using large samples. The results from the study indicated that the rainfall event characteristics observed at the weather stations in the four nations of the UK were both exponentially and gammally distributed. The comparative analysis of the distribution parameters demonstrated that the observed rainfall data have heterogeneous spatial distributions. The event-based trend analysis showed an upward trend in the number of extreme rainfall events and the number of rainfall events per year in the observed data. However, there was no correlation between temperature and the rainfall characteristics, although, in a global context, a correlation is suggested.

Received 29th November 2022
Accepted 3rd April 2023

DOI: 10.1039/d2va00294a

rsc.li/esadvances

Environmental significance

Rainfall is the principal element controlling the regional hydrologic cycle and water resource availability. Therefore, effective water resources systems planning and management require a good understanding of rainfall event characteristics and distributions. Frequency analysis is essential to finding suitable models that could predict several natural processes. This study demonstrated that the observed rainfall event characteristics in the UK fit well to an exponential distribution model. In addition, for the first time using an event-based approach on rainfall data observed at selected weather stations in the four nations of the UK, the paper assessed the potential factors that influenced the distributions of rainfall event characteristics. The findings obtained from this study would be useful for environmental engineers, agriculturists, climatologists, and environmental policymakers and regulators.

1 Introduction

The amount of weather events and their distributions worldwide or at a regional scale is an essential aspect affecting several environmental, social, and economic systems. For example, extreme rainfall events, interevent times (dry periods), and extreme temperatures can lead to flooding or drought, causing disturbances to the earlier mentioned systems. To contextualize

this, in the UK, the Meteorological Office, otherwise known as the Met Office, through several studies, projected prolonged precipitation events during winter and more extended dry periods during summer.¹ In 2022, the Met Office declared the temperature of 40.3 °C at Coningsby, Lincolnshire, to be the highest temperature ever recorded in the UK,² and July 2022 was verified as the driest month since 1935.³ This resulted in drought being declared in some parts of the UK in August 2022.⁴ Another study by Essien *et al.*, using data from the UK, summarised that traffic flow characteristics (*i.e.*, speed, volume, and density) correlate with rainfall event volume variations.⁵ Therefore, one could say that it is critical to continuously study and understand the UK climate data (rainfall event

Department of Civil Engineering, McMaster University, Hamilton, Ontario, L8S 4L7, Canada. E-mail: essiena@mcmaster.ca

† Electronic supplementary information (ESI) available. See DOI: <https://doi.org/10.1039/d2va00294a>



importance of rainfall data to the aforementioned professionals, transforming and interpreting extensive rainfall event characteristics in terms of future probabilities of occurrence may be considered one of the challenging tasks.¹⁴ Although several papers have discussed procedures for separating continuous rainfall data into individual events,^{7,15} to the authors' knowledge, no published study has provided a comprehensive step-by-step guide for separating individual events from extensive continuous historical rainfall data, especially for rainfall data with gaps or missing values, like those received by the authors from the Met Office. Moreover, in the case of the study areas, testing the exponentiality and comparing the distribution parameters of large samples of rainfall event characteristics extracted from 55 year-hourly rainfall data as well as conducting an event-based trend analysis to investigate the potential impacts of climate change on the rainfall events are unprecedented and topical. Therefore, this paper aims to: (1) provide a comprehensive step-by-step guide for the separation of extensive continuous rainfall data into individual rainfall events and conduct frequency analyses of the characteristics of separated rainfall events, (2) demonstrate the goodness-of-fit of theoretical distributions to the rainfall event characteristics of the different regions of UK and conducting a comparative analysis, and (3) conduct event-based trend analysis on rainfall event characteristics and temperatures to assess the potential impacts of climate change on them.

Rainfall and temperature data are important elements in understanding water balance on a global scale, as well as studying and understanding the complexity of human-water systems (social hydrology).⁶ However, rainfall patterns may vary from region to region, and in some cases, they may differ from one weather station to another in the same region. On the other hand, as supported by many studies, homogeneity in terms of theoretical distribution can be found. For example, studies by Hassini and Guo, Adams and Papa, and Shamsudin *et al.* fitted rainfall event characteristics to exponential distributions with observed data from the US, Canada, and Malaysia, respectively.^{7–9} Moreover, based on the reports from several studies, one could conclude that exponential distribution is one of the most widely used theoretical distributions for rainfall data.^{10–13}

Consequently, collecting, analyzing, interpreting, and understanding rainfall data is an essential component of interest for scientists, engineers, regulators, and agriculturists. However, within all these rationales associated with the

2.1 Area of study and sources of climate data

The United Kingdom is the area of study for this paper. This region was selected because, unlike other regions, such as the US and Canada, where extensive studies have been conducted and the goodness-of-fit of exponential distributions to large

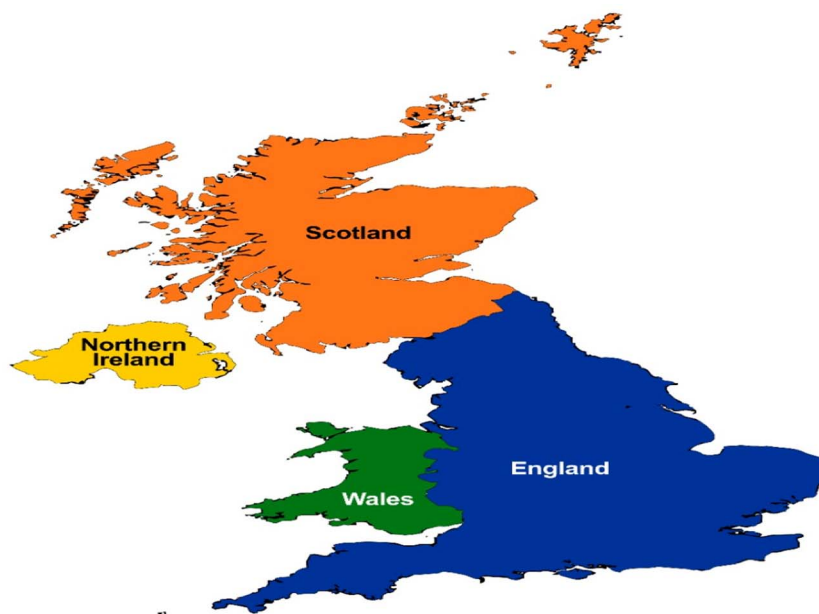


Fig. 1 Map showing the location of the study areas.¹⁷



Table 1 Characteristics of the United Kingdom^{18,19}

Country name	Area (km ²)	Population	Density (persons per km ²)
England	130 311	56,286 961	432
Scotland	77 903	5 463 300	70
Wales	20 736	3 152 879	152
Northern Ireland	13 793	1 893 667	136

samples' of rainfall event characteristics were verified already, no study has yet been conducted using extensive rainfall data observed at the selected weather stations in the four nations of the UK (one extensive rainfall series per location in each nation). Moreover, a better understanding of rainfall event characteristics of the UK is useful for climate change adaptation and stormwater management. Another reason for choosing the UK as the area of study is because the UK is considered by many historians as the place of origin of the industrial revolution; hence, it is imperative to assess the impact of climate change on the human-water systems for this region.¹⁶ The UK comprises four nations, England, Scotland, Wales, and Northern Ireland (Fig. 1). The basic characteristics of the four nations used in this study, including area and population, are presented in Table 1.

Extensive hourly rainfall and monthly average temperature data were obtained for a total of six stations located in the capital cities of England, Scotland, Wales, and Northern Ireland. These capital cities are London, Edinburgh, Cardiff, and Belfast. These stations were chosen because they provided the longest and most consistent data. The data were requested and received *via* email directly from the UK Met Office. For the purpose of this study and clarity of presentation, the names of the nations where the data was recorded were used only as the possessive adjective of the selected weather stations. Table 2 shows the geographical information of the selected stations. The number of years of the climate data extracted for each station is 55. The average percentage coverage of the hourly rainfall data recorded at these stations was 99%, *i.e.*, only 1% data is missing. The winter months were removed from the data. This is because urban stormwater management is the main intended application of the results of this analysis, and urban stormwater management facilities are all designed based on rainfall statistics of non-winter months. However, if snowfall or the temperature of the whole year is also of interest, the winter months may also be included.

2.2 Separation of continuous rainfall data into individual events

The following steps were followed to separate the continuous hourly rainfall series into individual rainfall events:

Step 1: calculate the percentage of total missing data in the data set. If the percentage of the total missing data is >1%, the data set may be considered unsuitable for use in this study. This resulted in the final choice of the six stations listed in Table 2. In addition, one could also check if the missing data are concentrated in one specific year.

Step 2: assess and delete years with too many missing data or too large data gaps. It was found that not many weather stations have data covering over 50 years without any data gaps. In some countries, meteorological stations with over 50 years of complete hourly data do not exist. In the UK, even the best stations have some data gaps (B. Duncan, Met Office, personal communication, April 1st, 2022). Therefore, it is necessary to delete those years where too many data are missing. For this study, this was achieved by selecting the most consistent 55 year data from the entire data set with 99% average coverage.

Step 3: change all the rainfall depths recorded as "trace" to 0.0 mm. This is because according to the Met Office of UK, "trace" was recorded if either of the following applies (B. Duncan, Met Office, personal communication, July 7th, 2021):

- "The measured fall is less than 0.05 mm, and the observer knows that the water in the gauge is not the result of water draining from the sides of the can after the previous measurement."
- "The gauge contains no water, but the observer knows that some rain or other precipitation has fallen since the previous observation."

Step 4: delete the rainfall data for the winter months.

Step 5: separate the continuous rainfall series into individual rainfall events according to the following procedure:

- Determine a suitable interevent time definition (IETD).
- Delete the first rainfall event or interevent time at the beginning and end of every year. This is necessary because the winter month was deleted for every year.
- If a year's record starts with an interevent time (dry period) less than the selected IETD and then it is followed by a rainfall event, the interevent time must be deleted and not counted as a complete dry period. This first rainfall event following the first interevent time must also be deleted and not counted as a complete rainfall event. This is because it is unsure if there were rainfalls immediately before that first dry period,

Table 2 Geographical information of the selected stations

Weather station name	Station location identifier (NGR)	Latitude	Longitude	Altitude (m)	City	Country
Heathrow	5077E 1767N	51 : 48N	0 : 45W	35	London	England
Turnhouse	3159E 6739N	55 : 95N	3 : 35W	35	Edinburgh	Scotland
Gogarbank	3161E 6714N	55 : 93N	3 : 34W	57		
Rhoose	3066E 1677N	51 : 40N	3 : 34W	65	Cardiff	Wales
St Athan	2999E 1684N	51 : 40N	3 : 44W	49		
Aldergrove	3146E 3810N	54 : 66N	6 : 22W	63	Belfast	Northern Ireland



© 2023 The Author(s). Published by the Royal Society of Chemistry

and interevent time b may follow the following exponential distributions for many different locations:^{8,29,30}

$$f_V(v) = \zeta e^{-\zeta v}, v \geq 0 \quad (7)$$

$$f_T(t) = \lambda e^{-\lambda t}, t \geq 0 \quad (8)$$

$$f_B(b) = \psi e^{-\psi b}, b \geq 0 \quad (9)$$

where ζ , λ , and ψ are the distribution parameters.

Goodness-of-fit (GOF) test will be conducted using these exponential distributions as the theoretical distributions. In addition, for comparison purposes, the gamma distribution will also be used as the theoretical distributions for v , t , and b . The probability density function $f(x)$ of a gamma distribution is depicted in eqn (10):³¹

$$f(x) = \frac{1}{\beta^\alpha \Gamma(\alpha)} x^{\alpha-1} e^{-x/\beta} \quad (10)$$

where α (shape) and β (scale) are the two parameters of the gamma distribution and Γ is the gamma function. In eqn (10), x may be used to represent either v , t , and b . Both theoretical distributions were fitted using method of moments.

2.4 Trend analysis

The frightening nature of the potential impacts of climate change on rainfall distribution is one of the rationales behind the trend analysis conducted in this study. This is because minor variations in climate could result in extreme rainfall event volumes and/or interevent times. The trend analysis considered are summarised below, and all the rainfall event volumes, without v_t , were considered for the trend analysis. Simple linear regression (SLR), as depicted in eqn (11),³² was used for the trend analyses.

$$Y = a + mx \quad (11)$$

In eqn (11), a is the base intercept, Y and x are the variables, and m is the regression coefficient. For the trend analysis, x is used to represent the number of years, and y represents the value of the event characteristics or their counts. This is an acceptable trend analysis model for this study, as it typically provides a good fit for extensive seasonal data recorded at locations with consistent methods.³³ In addition, even in violation of the normality assumption, it remains a robust statistical model for studies involving large sample sizes.^{34,35}

The trend analyses conducted in this study include:

- Trend analysis on the annual total number of rainfall events.
- Trend analysis of the total number of rainfall events at or greater than a given threshold.
- Trend analysis of the annual total rainfall volumes and annual average rainfall event volumes.

2.5 Maximum annual average intensity

Maximum annual average rainfall intensities observed at the selected weather stations in the four nations were calculated and compared to obtain an initial general sense of the intensity

of rainfalls in the four nations. To determine the maximum annual average intensity for the four nations, first, the annual average intensity was calculated as shown in eqn (12).

$$\bar{I}_a = \frac{1}{n_a} \sum_{i=1}^{n_a} \frac{v_i}{t_i} \quad (12)$$

In eqn (12), \bar{I}_a is the annual average rainfall intensity, and n_a is the total number of rainfall events in a particular year.

2.6 Correlation analysis

In this analysis, the emphasis was to investigate the impacts of regional temperature variations on rainfall event characteristics (v and b) in the UK. This was conducted by plotting the average temperatures and the number of rainfall events with characteristics greater than a specific threshold against their corresponding demi-decade-represented years. The demi-decade presented in this study is considered a period of consecutive 5 years between the selected continuous data.

3 Results and discussion

3.1 Data transformation

Hourly rainfall data received from the UK Met Office cover 1949–2019 for the station in England and 1960–2019 for Scotland, Wales, and Northern Ireland. For Scotland and Wales, data from two weather stations in the same area were combined into one extensive hourly rainfall data series (Table 2). The authors found that this is acceptable, as the study by Gregory *et al.* reported strong correlations in rainfall patterns for locations in the same region.³⁶ The selected weather stations for the four UK nations had consistent 55 year data after deleting years with too many missing data. Hourly rainfall values stated as “trace” were changed to 0.0, as stated in step 3 in Section 2.2. The winter months were removed from the record, which the Met Office defines as December 1 to February 28 (or 29 in a leap year).³⁷ Interevent time definition (IETD) is the minimum number of dry hours between two consecutive rainfall events. To qualify as an individual rainfall event, there must be fewer than IETD consecutive dry hours during the rainfall hours, as shown in Fig. 2. It is recommended to use 6–12 hours as the IETD for urban stormwater management to ensure that runoff generated from consecutive rainfall events will have enough time to separate from each other.⁷ However, IETDs may be increased up to 30 hours for large catchments. The study conducted by Hydrosience, Inc. in 1979 indicated that IETD for rainfall data could be between 3 and 30 hours.³⁸ For small urban catchments, the selected IETD was 6 hours (Fig. 2).

After selecting an IETD of 6 hours, the data from the selected weather stations for the four nations were separated into individual events. The first event (either the rainfall event and its corresponding duration or interevent time) at the beginning of March was deleted every year. The same was performed for the last event or interevent time at the end of November. More detailed rules as described in points (c) to (f) of step 5 in Section 2.2 were followed in identifying rainfall events and interevent times. The volume threshold (v_t) for this study was set at 1 mm.



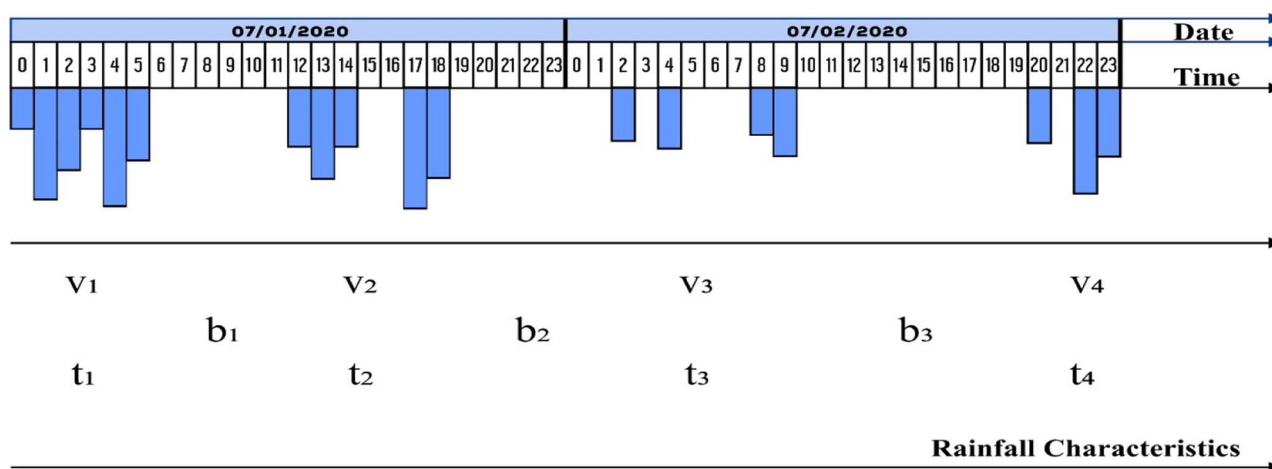


Fig. 2 Demonstration of the separation of continuous hourly rainfall records using 6 hour IETD.

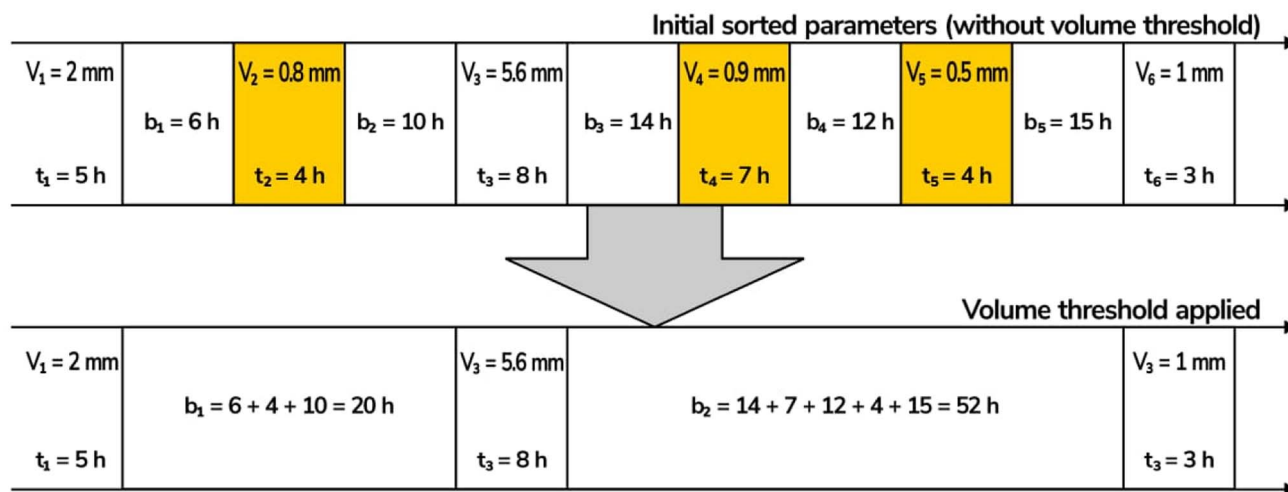


Fig. 3 Demonstration of how rainfall events with $v < 1$ mm are removed and how the affected interevent times are modified.

Therefore, any rainfall events less than 1 mm were removed. This is supported by studies conducted by Benestad and Benestad *et al.* as they observed that rainfall data appeared to be better exponentially distributed when its event volume threshold is set at 1 mm.^{39–41} Introducing the volume threshold on the initially separated events will result in adding their

corresponding durations to the preceding interevent times; for easier comprehension, this procedure is demonstrated in Fig. 3.

3.2 Frequency analysis and goodness-of-fit tests

The frequency analysis and chi-square GOF conducted for the exponential distributions (fitted using the method of moment)

Table 3 Summary of the exponential model distribution parameters and the observed \tilde{V}_{aat} by Met Office

Country name	Weather station name	Distribution parameters (with v_t)					(x_c^2) (exponential)			(x_c^2) (gamma)			C_v (exponential and gamma)		
		ζ (mm $^{-1}$)	λ (hr $^{-1}$)	Ψ (hr $^{-1}$)	θ	\tilde{V}_{aat} (mm)	v	t	b	v	t	b	v	t	b
England	Heathrow	0.158	0.110	0.012	71	450	0.06	0.05	0.57	0.03	0.01	0.02	37.65	37.65	37.65
Scotland	Turnhouse and Gogarbank	0.165	0.095	0.015	82	500	0.48	0.12	0.15	0.04	0.05	0.03	38.89	38.89	38.89
Wales	Rhoose and St Athan	0.134	0.094	0.017	90	666	0.05	0.08	1.80	0.01	0.02	0.03	38.89	38.89	38.89
Northern Ireland	Aldergrove	0.171	0.095	0.019	103	603	0.22	0.14	0.71	0.06	0.04	0.03	38.89	38.89	38.89



followed strictly the methodology described in Section 2. The study's hypothesis was tested using a level of significance of 5%. Therefore, a p -value $\geq 5\%$ will result in a failure to reject the null hypothesis. The exact p -values were computed using the statistical software R.

The p -values of the GOF tests with the null hypothesis of the theoretical distributions for the observed data recorded at the selected weather stations in the UK all approached 1, and their calculated chi-square values (χ^2) and chi-square critical values (C_v) are shown in Table 3. Fig. S1.1a–c, S1.2a–c, S1.3a–c, and S1.4a–c (ESI†) show the graphical comparisons of the observed frequency distributions and fitted exponential distributions for the rainfall data observed in the weather station in England, Scotland, Wales, and Northern Ireland, respectively, after applying the volume threshold (v_t) of 1 mm. Both the infographic comparison and the aforementioned results of the chi-square GOF tests suggest that exponential distributions fit well the rainfall data observed at the selected weather stations in the four nations of the UK.

3.3 Comparative analysis of rainfall event characteristics

To verify the previously mentioned statement that exponential distribution is one of the most widely used theoretical distributions for rainfall data and was found to fit well observed frequency distributions, the authors compared the goodness of fit of the rainfall event characteristics of the UK to the gamma distribution. Gamma distribution was chosen, as the study by Gregory *et al.* indicated that the UK daily precipitations in most regions tend to be gamma distributed.³⁶ Moreover, Stagge *et al.* recommended gamma distribution as a default distribution for European rainfall data.⁴² Looking at Fig. S1.1a–c, S1.2a–c, S1.3a–c, and S1.4a–c (ESI†), which show the visual comparison of the observed frequency, exponential modeling, and gamma modeling of the rainfall event characteristics (v , t , and b) with $v_t \geq 1$ mm for the station in England, Scotland, Wales, and Northern Ireland, respectively, and the lower values of the chi-square test statistic from gamma modelling, demonstrated that the UK rainfall event characteristics were better gammally distributed than exponentially. Therefore, this supports the study by Gregory *et al.* and Stagge *et al.*^{36,42} However, exponential distribution is still preferred because compared to all other theoretical distributions for variables with finite mean and positive values, exponential distribution has the largest entropy.⁴³ Using a distribution with the largest entropy ensures that all possible and extreme cases will be included. Moreover, the exponential distribution model is highly mathematically tractable, resulting in many closed-form analytical equations which can be used to directly quantify many physical quantities of interest.⁴⁴ One interesting trend noticed for the rainfall event characteristics with respect to the observed frequency recorded at the selected weather stations in the four nations of the UK is the overestimation of most frequencies for v and t and the underestimation of most frequencies for b by exponential model. On the other hand, most frequencies for v , t , and b were overestimated by the gamma model except for the t frequencies for the station in England, which were underestimated.

Meteorological processes involved in the generation of rainfalls make it obvious that v and b as well as t and b are statistically independent.¹² However, this may not be so between t and v . Therefore, a correlation analysis was conducted to quantify the dependence between t and v for the observed data recorded at the selected weather stations in the four nations. The correlation coefficients between t and v for the station in England, Scotland, Wales, and Northern Ireland were found to be 0.57, 0.66, 0.66, and 0.61, respectively. In addition, the linear correlations between t and v in the observed data were found to be statistically significant (the null hypothesis that there is no meaningful relationship between t and v was rejected because the p -values were all lower than 0.05). However, the scatter plots conducted for the observed data recorded at the selected weather stations in four nations showed that t and v are weakly correlated and treating them as linearly correlated random variables may result in inaccuracies too. An example of the scatter plots between t and v is shown in Fig. 4. Consequently, for practical purposes, t and v may be treated as statistically independent. This assumption is supported by a study conducted by Guo and Guo, where the authors stated that treating t and v as statistically independent may not result in significant losses of accuracy.⁴⁵

After it was found that the observed rainfall event characteristics (v , t , and b) fit well to exponential distributions, a comparison of the values of the distribution parameters was conducted. The values of the distribution parameters for rainfall characteristics are shown in Table 3. The exponential distribution parameters ζ , λ , and ψ were calculated as the inverse of the average values of the rainfall event characteristics. Table 3 also reports the values for θ and \bar{V}_{aat} , where θ is the annual average number of rainfall events and \bar{V}_{aat} is the average annual total rainfall volume.

The average annual total rainfall volumes for the station in Wales, Northern Ireland, Scotland, and England are 666 mm, 603 mm, 500 mm, and 450 mm, respectively. The results shown in Table 3 also align well with the results obtained by Gregory *et al.* using daily and monthly data spanning the period from 1931 to 1989 for the four nations of the UK to investigate the

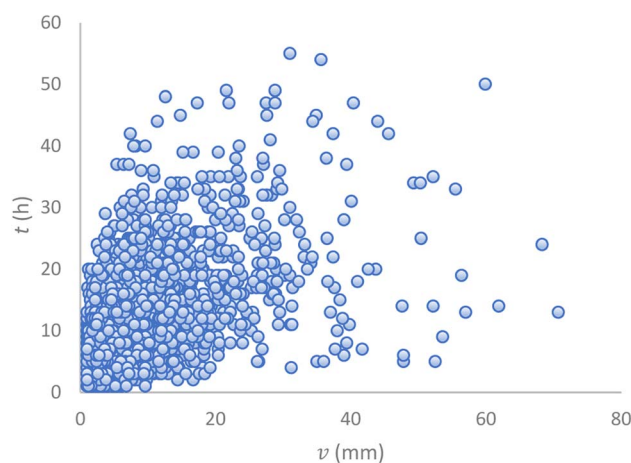


Fig. 4 Scattergram of t vs. v for England's station.



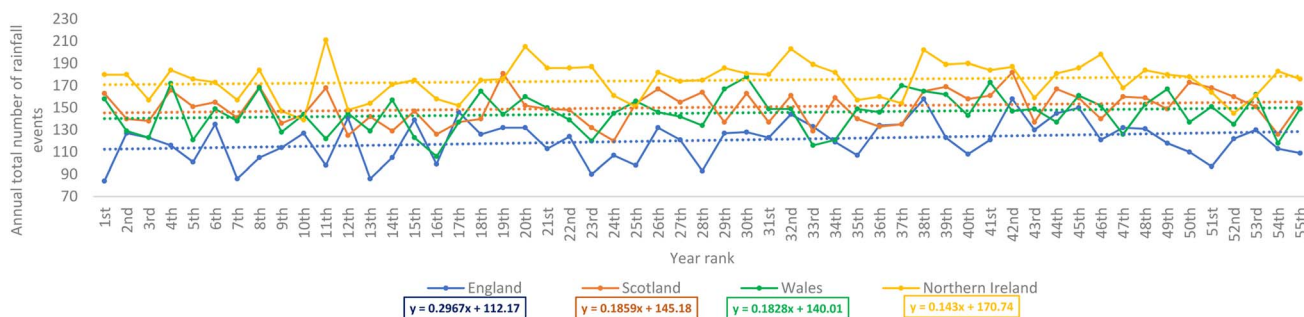


Fig. 5 Annual total number of rainfall events for the observed data recorded at the selected weather stations in the four nations for the 55 year period. Note: as a result of the missing years in the rainfall data recorded in the selected weather stations in the four nations of the UK, the ranking was used instead of the year so as to be able to plot the event-based rainfall events on the same axis for the UK's four nations' stations. The 55 year historical rainfall data recorded at the selected weather stations in the four nations were ranked in ascending order. This is shown in S2 (ESI†).

spatial heterogeneity of rainfall characteristics. The authors concluded that rainfall events are inhomogeneous between the station in England, Scotland, Wales, and Northern Ireland.⁴⁶

3.4 Trend analysis

The event-based trend analysis conducted in this section is based on the knowledge that several factors could be used to assess and evaluate the impact of global warming on the environment, especially water resources. However, due to rainfall distribution being an important aspect of the climate, trend analysis of the extensive historical climate data was considered to assess the local climatology for the locations where the observed rainfall data were collected in the four nations of the UK. Similar event-based analysis were conducted by Jun *et al.* and Dallet *et al.* for data observed in Seoul, Korea and Eastern Italian Alps, respectively. However, both studies focussed only on the trends of extreme rainfall events.^{47,48}

As rainfall intensity is one of the essential elements affected by climate change, the maximum annual average rainfall

intensity was calculated for the observed data recorded at the weather stations in the four nations (eqn (12)). The maximum annual average rainfall intensities for the period of 55 years were summarised as follows: $0.79 > 0.65 > 0.63 > 0.52$ (mm h^{-1}) for the station in England, Northern Ireland, Scotland, and Wales, respectively. Following the trend, it was noticed that the station in England, seconded by the station in Northern Ireland and followed by the station in Scotland, has the highest annual maximum average rainfall. The high maximum annual average rainfall intensities recorded in Northern Ireland's station and Scotland's station could simply be a result of the warmed moist westerly winds from the Atlantic weather systems that the western part of the UK is likely prone to in the form of frontal rainfall.⁴⁹ However, England's station topping the four locations may have resulted from the impact of local climatology due to increasing urbanization and industrial activities.

Fig. 5 shows the year-by-year changes in the annual total number of rainfall events over the 55 year period for the observed data recorded at the selected weather stations in the four nations. Visually, Fig. 5 demonstrates a positive increasing trend for the observed data recorded at the selected stations in the four nations. To further understand how the increasing number of rainfall events for the 55 year period were distributed, the rainfall rates were classified into different categories shown in Table 4. For this study, rainfall events greater than 4 mm h^{-1} were classed as extreme rainfall events, which is

Table 4 Rates of rainfall classification^{51,52}

Category	Rate of rainfall
Moderate rain	$>0.5 \text{ mm h}^{-1}$, but $<4.0 \text{ mm h}^{-1}$
Heavy rain	$>4 \text{ mm h}^{-1}$, but $<8 \text{ mm h}^{-1}$
Very heavy rain	$>8 \text{ mm h}^{-1}$

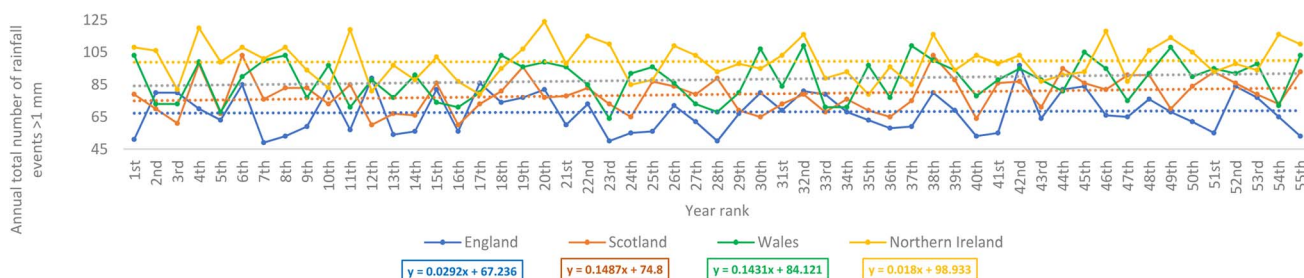


Fig. 6 Annual total number of rainfall events greater than 1 mm for the observed data recorded at the selected weather stations in the four nations for the 55 year period.



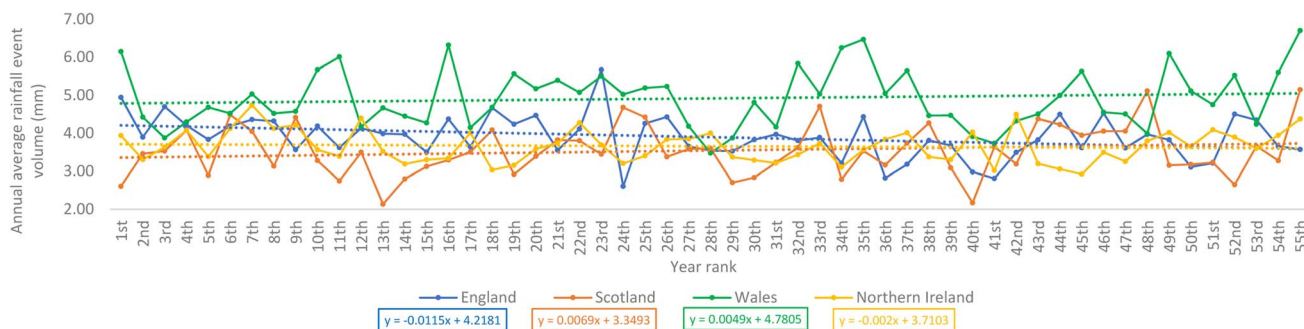


Fig. 7 Annual average rainfall event volume changed over the 55 year period for the observed data recorded at the selected stations in the four nations.

supported by the study conducted by Deumlich and Gericke on the trend analysis of heavy rainfall days in Germany.⁵⁰

Fig. 6 shows how the annual total number of rainfall events greater than 1 mm changes in the 55 year period. This analysis was considered as the v_t used on the observed data fitted to the theoretical distributions was 1 mm (Section 3.1). Moreover, rainfall events >1 mm may promote a better washout effect on atmospheric particulate pollution, such as nanoplastics and microplastics.⁵³ This annual total counted and summed all the rainfall events greater than 1 mm in each continuous year. The results indicated an increasing trend for the observed data recorded at the selected stations in the four nations. The increasing trend in the number of rainfall events greater than 1 mm for Scotland's station and Wales' station as shown in Fig. 6, was also supported by Fig. 7, which shows the annual average rainfall event volume changed over the 55 year period. However, it is observed that the annual average rainfall event volumes for the station in England and Northern Ireland have a decreasing trend. Nevertheless, this relatively aligned with the results in Fig. 6 as their degrees of steepness in the increasing trend of rainfall events >1 mm were the lowest compared to the other two nations' stations.

In addition, it was interesting to notice that even if the trend indicated that the number of rainfall events that result in rainfall volume >1 mm was increasing across the nations (Fig. 6), Fig. 8 clearly demonstrates that England's station has recorded a negative trend in the number of moderate rainfall events over the 55 year period. Moderate rainfall events contribute the vast majority of the annual total rainfall volumes.

This finding, with additional information or results from more weather stations, may have significant implications as it may be related to or be used to explain the causes of the drought currently experienced in some parts of the UK, of which England constitutes a large part. The fitted linear decreasing line for the station in England in Fig. 8 seems to suggest that the current drought in a city like London may be an inevitable result of a long-term decreasing trend. Wales' station, although it recorded a positive trend, had a lower steepness when compared to its rate of change in the number of rainfall events that resulted in volumes greater than 1 mm (Fig. 6). Fig. 9 shows the annual total rainfall volume for the observed data recorded at the selected weather stations in the four nations over the 55 year period. England's station's negative trend shown in this figure strongly aligns with the drought currently experienced in the London areas. However, positive trends were recorded for the other three nations' stations.

In addition, the event-based results shown in Fig. 5–8, with additional information and rainfall data from more stations, may be used to answer some of the typical questions often asked about UK's rainfall conditions (otherwise called “The Great British rain paradox”).⁵⁴ For example, if it seems like it rains so often in the UK, why are some parts of the UK currently experiencing drought? Using the data observed in the stations to suggest the answer to this question, based on Fig. 5, the increase in the annual number of rainfall events does mean that these rainfall events provide the required volume of water enough for groundwater recharge. This is because, as reported by Jin *et al.* in their study on the Chinese Loess Plateau, it took

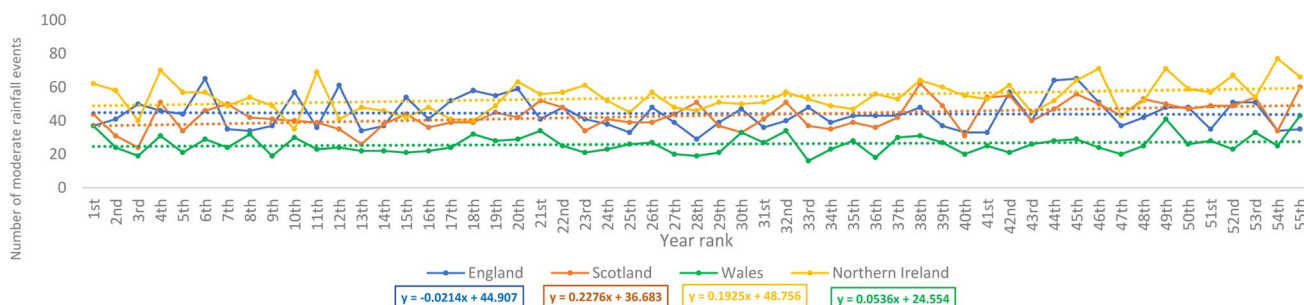


Fig. 8 Annual total number of moderate rainfall events for the 55 year period rainfall data recorded at the selected stations in the four nations.



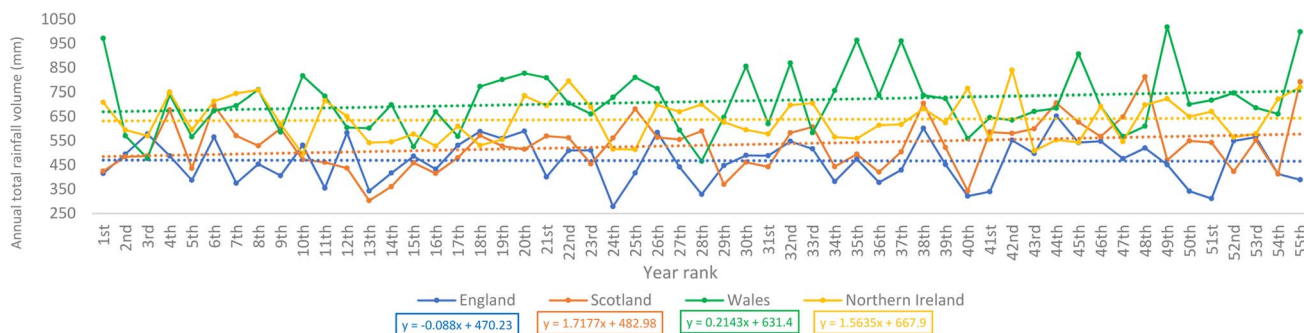


Fig. 9 Annual total rainfall volumes recorded at the selected station in the four nations for the 55 year period.

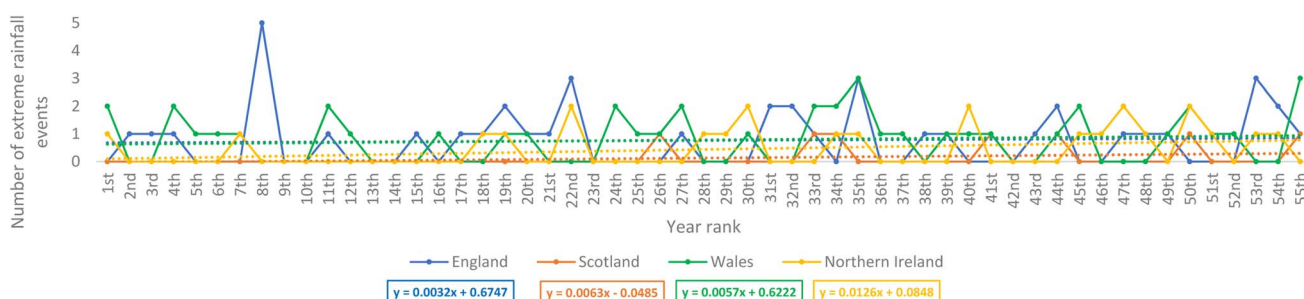


Fig. 10 Annual total number of extreme rainfall events for the 55 year rainfall data recorded at selected weather stations in the four nations.

an accumulated rainfall volume of 9 mm to trigger a response in the soil moisture at a depth of 10 cm in grassland sites.⁵⁵ However, in Fig. 10, it was interesting to notice that there were more extreme rainfall events observed in Wales' station within the first 10 year period and between the 30th and 40th year period. Extreme rainfall events are key pollutant carriers, such as microplastics (MPs). For example, a study by Forrest *et al.* noticed that the concentration of MPs doubled in an urban river during extreme rainfall events.⁵⁶ Therefore, the upward trends in the number of extreme rainfall events observed in the stations in the four nations of the UK, as shown in Fig. 10, would be valuable data to consider for these locations if one is researching emerging pollutants such as MPs.

The surface energy budget and planetary boundary layer affect the formation of rainfalls,⁵⁷ and the earth's surface temperature is highly influenced by the surface energy balance.⁵⁸ Fig. 11 shows a photo shared by the American Space Agency (NASA) posted by Dan Holley, a BBC weather presenter and meteorologist, online to demonstrate the impact of the increasing temperature on the rate of dryness of the UK land surfaces over the period of 12 months.⁵⁹ Although many considered the photos to be shocking, most importantly, this shows the potential negative impacts of the increasing surface temperature and extensive interevent times as demonstrated in Fig. S1.1c, S1.2c, S1.3c and S1.4c (ESI[†]). In addition, the figure shows that what may be considered as slight changes in rainfall conditions could trigger devastating environmental impacts. Consequently, the analysis of the corresponding temperatures for the 55 year period was conducted to establish the trend and

the relationship between the observed air temperature and rainfall event characteristics.

Fig. S3.1 and S3.4 (ESI[†]) show the trends of the demi-decade-averaged (5-yearly average) temperature and demi-decade total number of extreme rainfall events observed at the selected weather stations in the four nations. The graphical presentations provide visual comparisons of the relationship between demi-decade-averaged temperature and demi-decade total number of extreme rainfall events. The results demonstrate that the linear trend for both variables was positive, indicating that the number of extreme rainfall events increased as temperature increased. This may be considered an expected result as a warmer atmosphere holds more moisture and, therefore, more easily gives rise to extreme rainfall events when it is over-saturated. In addition, the results show that the positive trend



Fig. 11 Satellite image shared by NASA demonstrating the UK's dryness rate over one year.⁶⁰



Table 5 The correlation test results between the demi-decade-averaged temperature and demi-decade total number of extreme rainfall events

Nations	<i>p</i> values	Correlation coefficients
England	0.90	0.044
Scotland	0.08	0.551
Wales	0.20	0.422
Northern Ireland	0.18	0.438

of the demi-decade total number of extreme rainfall events observed at the stations in Scotland and Northern Ireland changed at a faster rate over the 55 year period than that of England and Wales. This may be due to the aforementioned warmed moist westerly winds from the Atlantic weather systems in addition to the impacts of the regional climate change.

According to Trenberth and Shea, temperature and precipitation records should not be analyzed without considering the existence of covariability between them.⁶¹ Therefore, Table 5 shows the results for the test of the relationship between the demi-decade-averaged temperature and demi-decade total number of extreme rainfall events under the null hypothesis that there is no correlation between them at a significance level of 0.05. The results indicated a non-statistical significance, *i.e.*, no significant linear relationships existed between the two variables for observed data recorded at the selected weather stations in the four nations. This may be a result of the sample size used in this study, as in a large spatiotemporal context, there might be a correlation between the trends of increasing rainfall and increasing temperature. This is indeed demonstrated by a recent study conducted by Benestad *et al.*; the study suggested that the spatial range of precipitation features can be influenced by the average temperature of the planet.⁶²

The UK Environmental Agency predicted that rainfall during summer might decrease by up to 15% by the 2050s,⁶³ thereby resulting in increased interevent times. More generally, climate change may lead to more increase in drought risks within the UK due to the increasingly hotter and drier summers (with reduced moderate rainfall events).⁶³ Fig. S3.5–S3.8 (ESI[†]) show the trend plots of the demi-decade-averaged temperature and demi-decade total number of interevent times greater than its individual nation station's average interevent time (INSAIT). There were variations between observed average interevent times (INSAIT). The results in descending order were as follows:

Table 6 The correlation test results between the demi-decade-averaged temperature and demi-decade total number of interevent times > INSAIT

Nations	<i>p</i> values	Correlation coefficients
England	0.54	0.208
Scotland	0.60	0.180
Wales	0.40	0.281
Northern Ireland	0.66	0.153

48 > 36 > 30 h for the station in England, Scotland/Wales, and Northern Ireland, respectively. England's station recorded the longest INSAIT. In addition, England station's positive trend (S3.5 (ESI[†])) in the demi-decade total number of interevent times > INSAIT has a steepness (0.61) greater than that of Scotland's station (0.15).

Table 6 shows the results for the correlation test under the null hypothesis that there is no correlation between the demi-decade-averaged temperature and the demi-decade total number of interevent times > INSAIT at 0.05 level of significance. Based on the results, there was no observed significant relationship between the two variables. These results were similar to the one reported in Table 5 but did not directly align with the result reported by the University of Leicester, which indicated that the dryness in England has a direct relationship with its land surface temperatures.⁶⁴ Moreover, air temperature differs from land surface temperature, although they influence each other.⁶⁴

4 Conclusions

This study tested the exponentiality of rainfall event characteristics sampled from extensive continuous rainfall data recorded at selected stations in the four nations of the UK. The step-by-step procedure for separating continuous historical rainfall data into individual events was extensively discussed. Two-parameter distribution model was also used to see if it fits better the large samples of rainfall event characteristics. A comparative analysis was conducted to examine the goodness-of-fit of the two distribution models. The variation of the distribution parameter values at different stations was examined. Event-based trend analysis was also conducted.

The results presented in this study demonstrated that observed rainfall event characteristics at the stations in England, Scotland, Wales, and Northern Ireland can be treated as both exponentially and gammally distributed. The comparative analysis of the distribution parameters reinforced earlier findings about how rainfall conditions change over the UK topography (Section 2.1). The comparative analysis of the best fit distribution indicated that the best fit distribution for the observed data recorded at the selected stations in the four nations of the UK is the gamma distribution, but the exponential distribution was the preferred model because it possesses the largest entropy. Moreover, as per the graphical comparison, the differences in fitness between the exponential and gamma distributions were insignificant. Therefore, the results for both distributions support the existing literature that rainfall event characteristics are likely to follow the exponential distribution and that gamma distribution may provide a better fit for rainfall events in most European countries. In addition, it was noticed that the exponential distribution model underestimated most of the occurrence frequencies, while the gamma distribution model overestimated most of them.

The magnitudes of climatic variabilities expressed based on individual rainfall events were identified in the event-based trend analysis of the data observed at the selected weather stations in the four nations. This served as an indicator of how



climate change has impacted and how it could further impact these nations on a regional scale. Although the number of rainfall events increased in all the data recorded in the UK over the 55 year period, moderate rainfall events, which could be said to provide adequate rainfall intensity for aquifer recharge, showed a negative trend in England's station (Fig. 8). The trends of the demi-decade-averaged temperatures and demi-decade total number of extreme rainfall events observed were all positive. However, only the station in England and Scotland showed a positive trend in the demi-decade total number of interevent times > INSAIT. Furthermore, there was no observed linear relationship between the demi-decade-averaged temperatures and demi-decade total number of extreme events as well as the demi-decade-averaged temperatures and demi-decade total number of interevent times > INSAIT. Nevertheless, in a global context, there is a suggestion of a correlation between them.

The overall results obtained from this study are essential for climate policy initiatives and stormwater managers, especially the estimated distribution parameter values and event-based trend analysis findings. Using the exponential distributions with the known parameter values, the percentages of rainfall events with volumes less than or greater than a specified threshold can be easily determined, so are interevent times. The comprehensive guidance provided for the separation of continuous rainfall data with missing values into individual rainfall events can be used by others for other locations. The simple trend analysis conducted based on these separated individual rainfall events is first of its kind for the selected locations in the four nations of the UK and may be utilized for other locations.

Conflicts of interest

There are no conflicts of interest.

Acknowledgements

The climate data were provided directly by the UK Met Office, and the authors would like to say thank you, especially to Duncan Ball, Met Office Information Specialist, for the technical support during the provision of the historical climate data and their kind responses to all the authors' queries.

References

- 1 Met Office, *UK and Global Extreme Events – Drought*, <https://www.metoffice.gov.uk/research/climate/understanding-climate/uk-and-global-extreme-events-drought>, accessed 12 August 2022.
- 2 Met Office, *Record High Temperatures Verified*, <https://www.metoffice.gov.uk/about-us/press-office/news/weather-and-climate/2022/record-high-temperatures-verified>, accessed 13 August 2022.
- 3 Met Office, *Driest July in England Since 1935*, <https://www.metoffice.gov.uk/about-us/press-office/news/weather-and-climate/2022/driest-july-in-england-since-1935>, accessed 13 August 2022.
- 4 UK Government, *Environment Agency Chairs National Drought Group as Parts of Country Move into Drought*, <https://www.gov.uk/government/news/environment-agency-chairs-national-drought-group-as-parts-of-country-move-into-drought>, accessed 13 August 2022.
- 5 A. Essien, I. Petrounias, P. Sampaio and S. Sampaio, in *Database and Expert Systems Applications: 28th International Conference, DEXA*, Springer, Cham, Regensburg, 2018, vol. 11030 LNCS, pp. 399–407.
- 6 A. E. Essien, K. White and M. Mohammadi, Interrelationship study of the impacts of hydraulic fracturing on the environment and socioeconomic activities: a novel approach to finding sustainable solutions, *Environ. Sci. Adv.*, 2022, **1**, 305–319.
- 7 S. Hassini and Y. Guo, Exponentiality, test procedures for large samples of rainfall event characteristics, *J. Hydrol. Eng.*, 2016, **21**, 04016003.
- 8 B. J. Adams and F. Papa, *Urban Stormwater Management Planning with Analytical Probabilistic Models*, John Wiley, New York, 2000.
- 9 S. Shamsudin, S. Dan'azumi, A. Aris and Z. Yusop, Optimum combination of pond volume and outlet capacity of a stormwater detention pond using particle swarm optimization, *Urban Water J.*, 2014, **11**, 127–136.
- 10 C. D. D. Howard, Theory of storage and treatment-plant overflows, *J. Environ. Eng. Div.*, 1976, **102**, 709–722.
- 11 P. S. Eagleson, Climate, soil, and vegetation: 2. The distribution of annual precipitation derived from observed storm sequences, *Water Resour. Res.*, 1978, **14**, 713–721.
- 12 B. J. Adams, H. G. Fraser, C. D. D. Howard and M. Sami Hanafy, Meteorological data analysis for drainage system design, *J. Environ. Eng.*, 1986, **112**, 827–848.
- 13 P. S. Eagleson, Dynamics of flood frequency, *Water Resour. Res.*, 1972, **8**, 878–898.
- 14 V. Kumar, Shanu and Jahangeer, Statistical distribution of rainfall in Uttarakhand, India, *Appl. Water Sci.*, 2017, **7**, 4765–4776.
- 15 F. Marra, M. Borga and E. Morin, A unified framework for extreme subdaily precipitation frequency analyses based on ordinary events, *Geophys. Res. Lett.*, 2020, **47**, e2020GL090209.
- 16 Met Office, *UK Regional Climates*, <https://www.metoffice.gov.uk/research/climate/maps-and-data/regional-climates/index>, accessed 22 July 2022.
- 17 Government of the Netherlands, *Which Countries Make Up the United Kingdom?*, <https://www.government.nl/topics/brexit/question-and-answer/which-countries-make-up-the-united-kingdom>, accessed 22 July 2022.
- 18 Office for National Statistics (ONS), *Population Estimates for the UK, England and Wales, Scotland and Northern Ireland, Provisional*, <https://www.ons.gov.uk/peoplepopulationandcommunity/populationandmigration/populationestimates/bulletins/annualmidyearpopulationestimates/mid2019#toc>, accessed 22 July 2022.
- 19 UK Government, *Offshore Energy SEA 4: Appendix 1 Environmental Baseline*, https://www.gov.uk/government/uploads/system/uploads/attachment_data/file/84444/Offshore_Energy_SEA_4_Appendix_1_Environmental_Baseline.pdf, accessed 22 July 2022.



- assets.publishing.service.gov.uk/government/uploads/system/uploads/attachment_data/file/1061601/Appendix_1g_-_Population_human_health.pdf, accessed 23 July 2022.
- 20 B. Bacchi, M. Balistocchi and G. Grossi, Proposal of a semi-probabilistic approach for storage facility design, *Urban Water J.*, 2008, **5**, 195–208.
 - 21 H. Li, J. Sun, H. Zhang, J. Zhang, K. Jung, J. Kim, Y. Xuan, X. Wang and F. Li, What large sample size is sufficient for hydrologic frequency analysis?—A rational argument for a 30-year hydrologic sample size in water resources management, *Water*, 2018, **10**, 430.
 - 22 H. A. Sturges, The choice of a class interval, *J. Am. Stat. Assoc.*, 1926, **21**, 65–66.
 - 23 D. W. Scott, Sturges' rule, *Wiley Interdiscip. Rev. Comput. Stat.*, 2009, **1**, 303–306.
 - 24 A. Kumar Biswas and A. Biswas, *The Choice of Bins of a Histogram: A Kolmogorov Distance-Based Approach*, Hal Open Science.
 - 25 M. P. Wand, Data-based choice of histogram bin width (Corr: 1999, 53, 174), *Am. Stat.*, 1997, **51**, 59–64.
 - 26 S. Manikandan, Frequency distribution, *J. Pharmacol. Pharmacother.*, 2011, **2**, 54–56.
 - 27 M. C. Acreman and M. G. Acreman, A simple stochastic model of hourly rainfall for Farnborough, England, *Hydrol. Sci. J.*, 2009, **35**, 119–148.
 - 28 W. Viessman and G. L. Lewis, *Introduction to Hydrology*, Pearson Education, India, 2003.
 - 29 M. Balistocchi, G. Grossi and B. Bacchi, An analytical probabilistic model of the quality efficiency of a sewer tank, *Water Resour. Res.*, 2009, **45**, 12420.
 - 30 Y. Guo and B. J. Adams, Hydrologic analysis of urban catchments with event-based probabilistic models: 1. Runoff volume, *Water Resour. Res.*, 1998, **34**, 3421–3431.
 - 31 H. C. S. Thom, A note on the gamma distribution, *Mon. Weather Rev.*, 1958, **86**, 117–122.
 - 32 G. Fu, F. H. Chiew, H. Zheng, D. E. Robertson, N. J. Potter, J. Teng, D. A. Post, S. P. Charles and L. Zhang, Statistical analysis of attributions of climatic characteristics to nonstationary rainfall-streamflow relationship, *J. Hydrol.*, 2021, **603**, 127017.
 - 33 United States Environmental Protection Agency, *Nonpoint Source Monitoring: TechNOTES*, <https://www.epa.gov/nps/nonpoint-source-monitoring-technotes>, accessed 28 October 2022.
 - 34 X. Li, W. Wong, E. L. Lamoureux and T. Y. Wong, Are linear regression techniques appropriate for analysis when the dependent (outcome) variable is not normally distributed?, *Invest. Ophthalmol. Visual Sci.*, 2012, **53**, 3082–3083.
 - 35 N. Subash and A. K. Sikka, Trend analysis of rainfall and temperature and its relationship over India, *Theor. Appl. Climatol.*, 2014, **117**, 449–463.
 - 36 J. M. Gregory, T. M. L. Wigley and P. D. Jones, Application of Markov models to area-average daily precipitation series and interannual variability in seasonal totals, *Clim. Dyn.*, 1993, **8**, 299–310.
 - 37 The Met Office, *When Does Winter Start?*, <https://www.metoffice.gov.uk/weather/learn-about/weather/seasons/winter/when-does-winter-start>, accessed 6 August 2021.
 - 38 E. D. Driscoll, D. M. D. Toro and R. V. Thomann, A statistical method for the assessment of urban stormwater, in *Environmental Protection Agency, Water Planning Division, Nonpoint Sources Branch, Washington*, 1979.
 - 39 R. E. Benestad, D. Nychka and L. O. Mearns, *Specification of Wet-Day Daily Rainfall Quantiles from the Mean Value*, New pub: Stockholm uni Press, DOI: [10.3402/TELLUSA.V64I0.14981](https://doi.org/10.3402/TELLUSA.V64I0.14981).
 - 40 R. E. Benestad, K. M. Parding, H. B. Erlandsen and A. Mezghani, A simple equation to study changes in rainfall statistics, *Environ. Res. Lett.*, 2019, **14**, 084017.
 - 41 R. E. Benestad, J. Lutz, A. V. Dyrddal, J. E. Haugen, K. M. Parding and A. Dobler, Testing a simple formula for calculating approximate intensity-duration-frequency curves, *Environ. Res. Lett.*, 2021, **16**, 044009.
 - 42 J. H. Stagge, L. M. Tallaksen, L. Gudmundsson, A. F. van Loon and K. Stahl, Candidate distributions for climatological drought indices (SPI and SPEI), *Int. J. Climatol.*, 2015, **35**, 4027–4040.
 - 43 D. Koutsoyiannis, Uncertainty, entropy, scaling and hydrological stochasticity. 1. Marginal distributional properties of hydrological processes and state scaling, *Hydrol. Sci. J.*, 2005, 381–404.
 - 44 R. R. Inman, Empirical evaluation of exponential and independence assumptions in queueing models of manufacturing systems, *Prod. Oper. Manage.*, 1999, **8**, 409–432.
 - 45 R. Guo and Y. Guo, Analytical equations for use in the planning of infiltration facilities, *J. Sustainable Water Built Environ.*, 2018, **4**, 06018001.
 - 46 J. M. Gregory, P. D. Jones and T. M. L. Wigley, Precipitation in Britain: an analysis of area-average data updated to 1989, *Int. J. Climatol.*, 1991, **11**, 331–345.
 - 47 C. Jun, X. Qin, Y. K. Tung and C. de Michele, On the statistical analysis of rainstorm events between historical (1777–1907) and modern (1961–2010) periods in Seoul, Korea, *Int. J. Climatol.*, 2020, **40**, 2078–2090.
 - 48 E. Dallan, M. Borga, M. Zaramella and F. Marra, Enhanced summer convection explains observed trends in extreme subdaily precipitation in the eastern Italian Alps, *Geophys. Res. Lett.*, 2022, **49**, e2021GL096727.
 - 49 Met Office, *How Much Does it Rain in the UK?*, <https://www.metoffice.gov.uk/weather/learn-about/weather/types-of-weather/rain/how-much-does-it-rain-in-the-uk>, accessed 21 August 2022.
 - 50 D. Deumlich and A. Gericke, Frequency trend analysis of heavy rainfall days for Germany, *Water*, 2020, **12**, 1950.
 - 51 U.S. Geological Survey (USGS), *Rainfall Calculator, Metric—How Much Water Falls During a Storm?*, <https://water.usgs.gov/edu/activity-howmuchrain-metric.html>, accessed 9 October 2022.
 - 52 B. Dale and N. Stylianou, *What Will Climate Change Look Like Near Me?*, <https://www.bbc.co.uk/news/resources/idx>



- [d6338d9f-8789-4bc2-b6d7-3691c0e7d138](#), accessed 9 October 2022.
- 53 L. C. Guo, Y. Zhang, H. Lin, W. Zeng, T. Liu, J. Xiao, S. Rutherford, J. You and W. Ma, The washout effects of rainfall on atmospheric particulate pollution in two Chinese cities, *Environ. Pollut.*, 2016, **215**, 195–202.
 - 54 Cambridge Water, *The Great British Rain Paradox*, <https://www.cambridge-water.co.uk/news/the-great-british-rain-paradox>, accessed 26 October 2022.
 - 55 Z. Jin, L. Guo, H. Lin, Y. Wang, Y. Yu, G. Chu and J. Zhang, Soil moisture response to rainfall on the Chinese Loess Plateau after a long-term vegetation rehabilitation, *Hydrol. Processes*, 2018, **32**, 1738–1754.
 - 56 S. A. Forrest, D. McMahon, W. A. Adams and J. C. Vermaire, Change in microplastic concentration during various temporal events downstream of a combined sewage overflow and in an urban stormwater creek, *Front. Water*, 2022, **4**, 128.
 - 57 Y. Zhang, J. A. Smith, L. Luo, Z. Wang and M. L. Baeck, Urbanization and rainfall variability in the Beijing metropolitan region, *J. Hydrometeorol.*, 2014, **15**, 2219–2235.
 - 58 D. L. Hartmann, *Global Physical Climatology*, Academic Press, San Diego, 1994.
 - 59 K. Feethan, *Scorched Earth Britain: NASA Images Show How Parched and Brown Country is Due to Heatwave*, <https://www.dailymail.co.uk/news/article-11041505/Scorched-earth-Britain-NASA-images-parched-brown-country-heatwave.html>, accessed 23 October 2022.
 - 60 J. Peat, *Crazy NASA Photos Show How Parched and Burnt the UK is*, <https://www.thelondoneconomic.com/news/crazy-nasa-photos-show-how-parched-and-burnt-the-uk-is-330358/>, accessed 15 October 2022.
 - 61 K. E. Trenberth and D. J. Shea, Relationships between precipitation and surface temperature, *Geophys. Res. Lett.*, 2005, **32**, 1–4.
 - 62 R. E. Benestad, C. Lussana Id, J. Lutz Id, A. Dobler, O. Landgrenid, J. E. Haugenid, A. Mezghaniid, B. Casatiid and K. M. Pardingid, Global hydro-climatological indicators and changes in the global hydrological cycle and rainfall patterns, *PLoS Clim.*, 2022, **1**, e0000029.
 - 63 Environment Agency, *Lack of Water Presents 'Existential' Threat, Says Environment Agency Chief*, <https://www.gov.uk/government/news/lack-of-water-presents-existential-threat-says-environment-agency-chief>, accessed 20 October 2022.
 - 64 University of Leicester, *Space Images Confirm England's Drought Areas Correlate With High Land Surface Temperatures*, <https://le.ac.uk/news/2022/august/space-drought-images>, accessed 20 October 2022.

