

Unraveling the internal dynamics of the benzene dimer: a combined theoretical and microwave spectroscopy study

Cite this: *Phys. Chem. Chem. Phys.*, 2013, **15**, 10207

Melanie Schnell,^{ab} Undine Erlekm,^c P. R. Bunker,^{cd} Gert von Helden,^c Jens-Uwe Grabow,^e Gerard Meijer^c and Ad van der Avoird^{*cf}

We report a combined theoretical and microwave spectroscopy study of the internal dynamics of the benzene dimer, a benchmark system for dispersion forces. Although the extensive *ab initio* calculations and experimental work on the equilibrium geometry of this dimer have converged to a tilted T-shaped structure, the rich internal dynamics due to low barriers for internal rotation have remained largely unexplored. We present new microwave spectroscopy data for both the normal (C₆H₆)₂ and partially deuterated (C₆D₆)(C₆H₆) dimers. The splitting patterns obtained for both species are unraveled and understood using a reduced-dimensionality theoretical approach. The hindered sixfold rotation of the stem can explain the observed characteristic 1:2:1 tunneling splitting pattern, but only the concerted stem rotation and tilt tunneling motion, accompanied by overall rotation of the dimer, yield the correct magnitude of the splittings and their strong dependence on the dimer angular momentum *J* that is essential to explain the experimental data. Also the surprising observation that the splittings are reduced by 30% for the mixed (C₆D₆)(C₆H₆)^S dimer in which only the cap (C) in the T-shaped structure is deuterated, while the rotating stem (S) monomer is the same as in the homodimer, is understood using this approach. Stark shift measurements allowed us to determine the dipole moment of the benzene dimer, $\mu = 0.58 \pm 0.051$ D. The assumption that this dipole moment is the vector sum of the dipole moments induced in the monomers by the electric field of the quadrupole on the other monomer yields a calculated value of $\mu = 0.63$ D. Furthermore, the observed Stark behavior is typical for a symmetric top, another confirmation of our analysis.

Received 18th March 2013,
Accepted 18th April 2013

DOI: 10.1039/c3cp51181b

www.rsc.org/pccp

1. Introduction

The benzene dimer, bound by dispersion forces, is a prototypical system in the study of the interactions between aromatic species that play an important role in biomolecular systems.^{1–6} It exhibits two competing equilibrium structures, a T-shaped one (edge-to-face arrangement) and a parallel-displaced one (stacked arrangement). The relative stability of such arrangements

is important, for example, in determining the folding of proteins with aromatic residues and in protein–DNA interactions. Experimentally it was found in 1975 that the benzene dimer is polar,⁷ which suggests that its structure is T-shaped. Henson *et al.* concluded in 1992 based on their Raman spectroscopic study that the benzene dimer consists of two inequivalent monomers, one with low and the other with higher symmetry.⁸ Their findings are consistent with a T-shaped equilibrium geometry in which the benzene moiety at the top of the T, *i.e.*, the cap, is more or less freely rotating about its C₆ axis. In 1993, Arunan and Gutowsky investigated the rotational spectrum of the benzene dimer using Fourier transform microwave (FTMW) spectroscopy.⁹ Surprisingly, they observed the rotational spectrum of a prolate symmetric top with a quartet substructure that was tentatively ascribed to two independent internal motions, such as two opposed interconversion pathways. However, both the unexpected symmetric-top spectrum and the substructure are not understood to date.

^a Center for Free-Electron Laser Science, Luruper Chaussee 149, D-22761 Hamburg, Germany

^b Max-Planck-Institut für Kernphysik, Saupfercheckweg 1, D-69117 Heidelberg, Germany

^c Fritz-Haber-Institut der Max-Planck-Gesellschaft, Faradayweg 4-6, D-14195 Berlin, Germany

^d National Research Council of Canada, Ottawa, Ontario K1A 0R6, Canada

^e Institut für Physikalische Chemie und Elektrochemie, Gottfried Wilhelm Leibniz Universität Hannover, Callinstrasse 3-3a, D-30167 Hannover, Germany

^f Theoretical Chemistry, Institute for Molecules and Materials, Radboud University Nijmegen, Heyendaalseweg 135, 6525 AJ Nijmegen, The Netherlands.
E-mail: A.vanderAvoird@theochem.ru.nl

The benzene dimer is a floppy system with low barriers to internal rotation. Quantum mechanical tunneling can occur between various equivalent minima in the potential surface that are separated by these low barriers. Therefore, if one wants to understand the properties of the benzene dimer, compare with experimental data, and draw conclusions about related biomolecular systems,^{1–6} it is not sufficient to know only the equilibrium structure and the binding energy; its internal dynamics must be understood as well. The usual vibrational harmonic normal mode analysis fails in this case. Instead, one should use a treatment that properly accounts for the large amplitude internal motions. Moreover, the system is delocalized over many equivalent equilibrium structures (minima in the potential surface) and the point symmetry group that is commonly used for semi-rigid molecules refers only to a single equilibrium geometry. One-dimensional (1D) model studies of tunneling processes in the benzene dimer and a harmonic normal mode calculation of the intermolecular vibrations have been made by Špirko *et al.*¹⁰ Their 1D model invoked to explain the tunneling splittings observed in the FTMW spectrum⁹ suggests that these splittings must be assigned to the hindered rotation of the stem about its C_6 axis, but cannot explain the observed magnitude of the splittings and their dependence on the total dimer angular momentum J .

In recent years, an *ab initio* global six-dimensional intermolecular potential surface has been developed for the benzene dimer.^{11,12} This potential was based on calculations using symmetry-adapted perturbation theory combined with density-functional theory for the monomers [SAPT(DFT)] and on coupled-cluster calculations including singles and doubles and perturbative triples [CCSD(T)]. The potential was used in computations of the bound levels¹² with a quantum mechanical method suitable to treat large amplitude motions in weakly bound dimers.^{13–16} The method, successfully applied earlier to the ammonia dimer¹³ and the water dimer,^{16–22} includes all six fully coupled intermolecular degrees of freedom. The benzene dimer potential has 288 equivalent minima for a tilted T-shaped (TT) structure and 144 equivalent (slightly less deep) minima for a parallel-displaced (PD) geometry. Allowing for all internal rotation tunnelings, the permutation-inversion (PI) symmetry group that describes the symmetry of the bound states has 576 elements in this case; it is called G_{576} .^{23,24} What made the calculations on the benzene dimer particularly demanding is that some of the barriers between the minima are very low and allow delocalization by tunneling between equivalent minima, whereas the barriers in other degrees of freedom are much higher so that the internal states are localized in these directions. This implies that the internal rotor basis used in the calculations had to be extremely large, in order to allow sufficient localization and converge the tunneling splittings.

The vibration–rotation–tunneling (VRT) levels of the benzene dimer were computed¹² for all the 54 irreducible representations (irreps) of the group G_{576} . Furthermore, to understand the nature of the calculated VRT states, we computed some of their properties and plotted various two-dimensional cuts of the

six-dimensional global wave functions. A symmetry analysis provided the selection rules for allowed transitions and showed how the different VRT levels are related to different tunneling mechanisms and to the intermolecular vibrations. It was found, in agreement with all experimental evidence, that for all of the 54 G_{576} symmetry species (with different nuclear spin statistical weights) the lower VRT states correspond to the TT structure; states with the PD structure are higher in energy than the ground state of A_1^+ symmetry by at least 30 cm^{-1} . The dissociation energy D_0 equals 870 cm^{-1} , while the depth D_e of the TT minimum in the potential is 975 cm^{-1} . It was established that at least two large-amplitude motions occur: sixfold hindered rotation of the cap in the TT structure and tilt tunneling. Both tunneling mechanisms produce level splittings on the order of 1 cm^{-1} . Also intermolecular vibrations with excitation energies starting at a few cm^{-1} were identified. Other motions, such as sixfold hindered stem rotation, cap turnover, and cap–stem interchange are hindered by much higher barriers in the potential. The tunneling splittings associated with these motions are so small that they could not be converged in the six-dimensional calculations, even with the largest basis sets that could be handled.

Here, we present new measurements of the microwave spectrum of the benzene dimer, first measured by Arunan and Gutowsky,⁹ with higher resolution and extended to the mixed $(C_6D_6)^C(C_6H_6)^S$ dimer. The observed tunneling splittings are on the order of 60 kHz, which indeed is several orders of magnitude too small to be converged in the six-dimensional calculations of the VRT states. We construct a reduced dimensionality approach based on a two-dimensional (2D) cut of the same *ab initio* potential as used in the full six-dimensional (6D) calculations. This approach involves only the sixfold hindered stem rotation and tilt tunneling, and accounts for the coupling between these internal motions. Also the overall rotation of the complex is considered. As discussed below, Coriolis coupling between the overall rotation and the internal motions leads to an unexpectedly strong dependence of the tunneling splittings on the overall angular momentum J and its projection K on the intermolecular axis, which was crucial in explaining the observed spectrum. Furthermore, we performed Stark effect measurements to determine the dipole moment of the benzene dimer. A brief report of our results is given in ref. 25; the present paper gives a more complete description of the experiments and of our theoretical approach.

II. Experimental

The rotational spectra of $(C_6H_6)_2$ and $(C_6D_6)^C(C_6H_6)^S$ were recorded using the high-resolution FTMW spectrometer at the Leibniz-Universität Hannover²⁶ (2 to 26.5 GHz) utilizing the coaxially oriented beam-resonator arrangement (COBRA).²⁷ The experimental setup of the Hannover COBRA FTMW spectrometer is described in detail elsewhere.^{26,27} This spectrometer was specially developed to provide high sensitivity and resolution in the low-frequency region below 6 GHz, where the pure rotational transitions of larger and heavier molecules are located.



It achieves line widths of about 1.5 kHz (HWHM) for neon as carrier gas, resulting in a resolution of about 4 kHz.

C_6H_6 and C_6D_6 have been purchased from Sigma-Aldrich and used without further purification. Both are liquids at room temperature with boiling points of around 80 °C and melting points of around 6 °C. Because of their high vapor pressures, neon as carrier gas was directly flowed through a reservoir filled with pure C_6H_6 or with a 1:1 mixture of C_6H_6 and C_6D_6 followed by supersonic expansion through a pulsed nozzle (General Valve Series 9) with a 0.8 mm orifice into the microwave resonator. To reduce the partial pressure of benzene, the reservoir was cooled to −15 °C with a salt-ice mixture.

It was observed recently that by using neon as a carrier gas in a supersonic expansion of C_6H_6 and C_6D_6 , only the mixed dimer $(C_6D_6)^C(C_6H_6)^S$ is formed with C_6D_6 in the cap and C_6H_6 in the stem.²⁸ This can be explained by a small difference of about 2 cm^{−1} between the zero point energies of $(C_6D_6)^C(C_6H_6)^S$ and $(C_6H_6)^C(C_6D_6)^S$. With helium as carrier gas, however, both dimers are formed, since the binding energy of helium with benzene in the course of the supersonic expansion is not sufficient to overcome the interconversion barriers.²⁸ We can use this to our advantage to selectively study the rotational spectrum of $(C_6D_6)^C(C_6H_6)^S$ by using neon as carrier gas.

Stark shift measurements of $(C_6H_6)_2$ to determine its dipole moment were performed with the CAESAR setup (coaxially aligned electrodes for the Stark effect applied in resonators).²⁹ It provides a homogeneous electric field over the entire mode volume of the resonator, from which molecules are effectively contributing to the emission signal. We calibrated the field strength using the $J + 1 \leftarrow J = 1 \leftarrow 0$ transition of OC³⁶S (0.02% natural abundance) using a documented dipole moment of 0.71519(3) D,³⁰ also see Appendix A of ref. 31 for details. Stark shifts of several rotational transitions of $(C_6H_6)_2$ were determined for different electric field strengths up to 172.2 V cm^{−1}.

III. Theory

A. Reduced-dimensionality approach

All the assigned rotational lines observed in the FTMW spectra split into quartets with a characteristic 1:2:1 ratio of the separations between consecutive lines. The magnitude of the splittings is typically about 60, 120, and 60 kHz. Since a similar level splitting pattern is obtained for sixfold hindered rotation tunneling in the high-barrier limit, it is expected that the observed splittings originate from the hindered rotation of one of the benzene monomers about its sixfold axis. The barrier in the *ab initio* potential¹² for rotation of the cap in the TT structure is only 6 cm^{−1} and the six-dimensional calculations of the VRT levels produce cap hindered rotation levels separated by about 1 cm^{−1} \approx 30 GHz, see Fig. 5 of ref. 12. Therefore, it seems unlikely that the much smaller splittings observed in the FTMW spectra are caused by hindered rotation of the cap; they probably originate from hindered rotation of the stem. There were some observations, however, which seemed to contradict this assumption. The sixfold barrier in the *ab initio* potential for stem rotation in the TT structure is about 118 cm^{−1}.

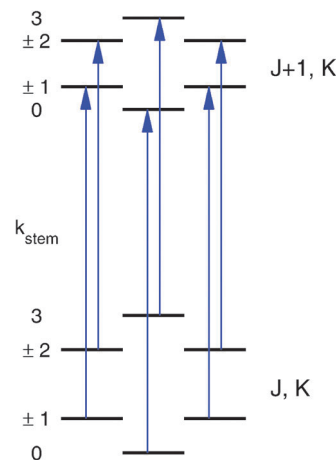


Fig. 1 Allowed $\Delta J = 1$, $\Delta K = 0$ transitions, with k_{stem} labeling the different stem-rotation tunneling levels of the lower and upper rotational states.

One-dimensional (1D) calculations for hindered stem rotation presented in ref. 12 show that the corresponding level splittings are on the order of 3×10^{-8} cm^{−1} \approx 1 kHz, *i.e.*, much smaller than the observed splittings. The discrepancy becomes even worse, however, if one realizes that the observed line splittings correspond to $\Delta J = 1$, $\Delta K = 0$ transitions and that the selection rules only allow transitions from the lowest lower state tunneling level to the lowest upper state tunneling level, from the second lower state tunneling level to the second upper state tunneling level, *etc.*, see Fig. 1. Consequently, the splittings of about 60, 120, and 60 kHz in the rotational transition frequencies correspond to *differences* in the splittings of the lower (J) state levels and the upper ($J + 1$) state levels. This implies that the tunneling splittings of the energy levels involved in the transitions, see Fig. 1, should be strongly J dependent and much larger than the observed line splittings. Results from the 1D model seem to indicate that such large splittings can only occur if the stem-rotation barrier is very much smaller than given by the *ab initio* calculations: so small, in fact, that one would no longer be in the high-barrier tunneling limit and the characteristic 1:2:1 splitting pattern would be lost. Moreover, it was not clear from the 1D model why the splittings would be strongly J dependent.

Also Špirko *et al.*¹⁰ assigned the 1:2:1 splittings observed in the FTMW spectrum of Arunan and Gutowsky⁹ to hindered stem rotation tunneling and they performed 1D calculations of the splittings for various stem rotation barrier heights. In CCSD(T) calculations with a small basis they had found the height of this barrier to be 46 cm^{−1}; their corresponding splittings were 1.24, 2.49, and 1.25 MHz. From the size of the splittings observed in the FTMW spectrum they estimated that this barrier must be about 90 cm^{−1}, twice their calculated value. However, they did not realize that the splittings observed for $\Delta J = 1$, $\Delta K = 0$ transitions in the FTMW spectrum must correspond to differences in the splittings of the tunneling levels calculated for J and $J + 1$, which can only be explained if the splittings of the levels for each J are much larger than the splittings in the transition frequencies and, moreover, strongly J dependent.



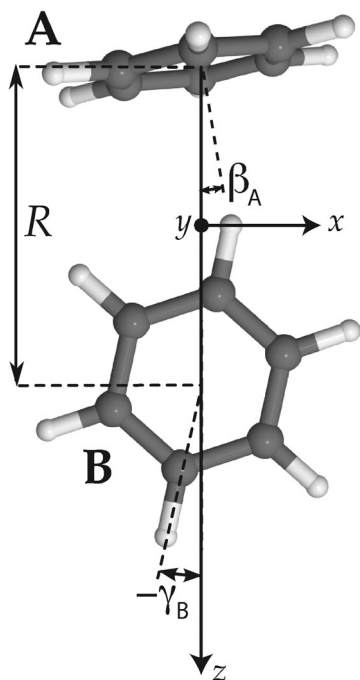


Fig. 2 Tilted T-shaped (TT) equilibrium structure. β_A describing the cap tilt and γ_B describing the stem rotation are the internal angles varied in the 2D model. Also the overall rotation of the dimer about the y axis is included in this model.

Hence, in order to reproduce our experimental splittings, an extended tunneling mechanism beyond 1D stem rotation has to

be considered. Tilt tunneling is the process in which the dimer in the TT equilibrium structure with C_s symmetry (Fig. 2) tunnels through a C_{2v} symmetric T-shaped structure to an equivalent TT equilibrium structure of C_s symmetry. The barrier in the *ab initio* potential¹² at the C_{2v} symmetric T-shaped structure is about 27 cm^{-1} . A set of Euler angles describing the orientations of the benzene monomers in the dimer was defined in ref. 12. The TT equilibrium structure in Fig. 2 has $\beta_A = 9^\circ$, $\gamma_A = 30^\circ$, $\alpha = 90^\circ$, $\beta_B = 90^\circ$ and $\gamma_B = -12^\circ$ (subscript A denotes the cap and subscript B the stem). In our 2D reduced-dimensionality approach we fix the angles γ_A , α , β_B at their equilibrium values and we also fix the distance R between the monomer centers of mass. We vary the polar angle β_A , *i.e.*, the angle between the cap C_6 axis and the vector R that connects the centers of mass of the cap and the stem, and the angle γ_B that describes the rotation of the stem about its own C_6 axis (see Fig. 2). At the C_{2v} symmetric T-shaped structure both β_A and γ_B are zero. The tilt-tunneling process involves not only a change of β_A from $+9^\circ$ to -9° , but also a change of γ_B from -12° to $+12^\circ$. This shows already that tilt tunneling and stem C_6 rotation are correlated. The reason for this correlation can be understood from a 2D plot of the 6D potential surface as a function of the angles β_A and γ_B , see Fig. 3. In this plot the other Euler angles are fixed at their equilibrium values and $R = 9.42a_0$, which is the average distance in the vibrational ground state.¹² This figure illustrates that the barrier for stem rotation is as high as 320 cm^{-1} if the cap tilt angle β_A is fixed at its equilibrium value of 9° . If β_A is fixed at 0° the minimum (at the T-shaped structure with $\gamma_B = 0^\circ$)

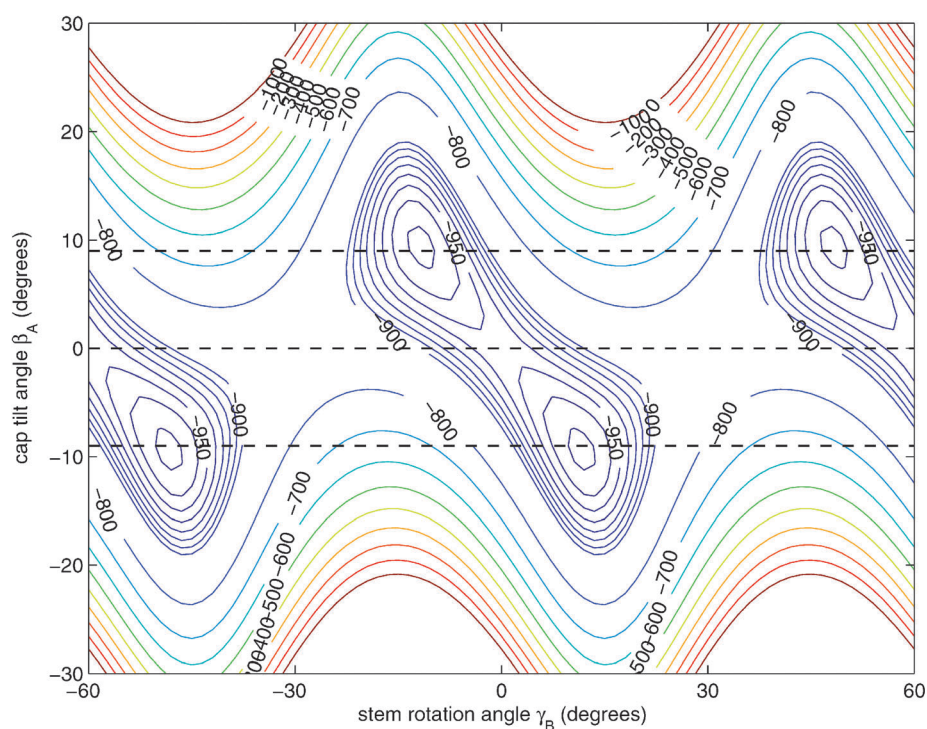


Fig. 3 Two-dimensional cut of the *ab initio* potential¹² with the angles $\gamma_A = 30^\circ$, $\alpha = 90^\circ$, and $\beta_B = 90^\circ$ fixed to their values at the potential minimum and $R = 9.42a_0$ chosen as the average distance in the 6D vibrational ground state.¹² The angle γ_B actually ranges over 360° and the potential is invariant under changes of γ_B by 60° . 1D cuts of the potential for $\beta_A = 9^\circ$, 0° , and -9° are marked with dashed lines.



is higher by 24 cm^{-1} (for $R = 9.42a_0$) and the barrier (relative to that minimum) is only 92 cm^{-1} . That is, if β_A is allowed to relax, the barrier for stem rotation through the T-shaped structure is 116 cm^{-1} . This value is not very different from the value of 118 cm^{-1} obtained if one starts from the TT equilibrium structure with $R = 9.34a_0$ and also R is allowed to relax. Thus, stem rotation is strongly facilitated if the cap is allowed to rotate away from its equilibrium orientation.

Since a 1D model for stem hindered rotation could not explain the splittings observed in the FTMW spectrum, while a full 6D calculation could not be converged sufficiently well to extract the observed small tunneling splittings, we constructed a 2D model that involves only the two internal coordinates β_A and γ_B . The potential surface used in this model is a 2D cut of the *ab initio* potential, as shown in Fig. 3; we also studied the effect of choosing different values of R . The Hamiltonian in our model is a restricted version of the Hamiltonian in body-fixed (BF) dimer coordinates used in the 6D calculation of the VRT states in ref. 12. The restriction implies that each of the monomers is only allowed to rotate about a single axis, which is parallel to the y axis of the dimer. The z axis of the BF frame was already defined¹² to be along the intermolecular vector \mathbf{R} , and the y axis is the axis perpendicular to the plane of the stem molecule in the TT structure (as well as in all other structures described by the 2D model). With this restriction the Hamiltonian of eqn (5) in ref. 12 becomes

$$H = B j_{yA}^2 + C j_{yB}^2 + \frac{1}{2\mu_{AB}R^2} (J_y - j_{yA} - j_{yB})^2 + V(\beta_A, \gamma_B), \quad (1)$$

where B and C are the rotational constants of a benzene monomer for rotation about one of its in-plane C_2 axes (for the cap) and about its C_6 axis (for the stem), respectively. We used the values $B = 0.1898\text{ cm}^{-1}$, $C = 0.0949\text{ cm}^{-1}$ for C_6H_6 and $B = 0.1570\text{ cm}^{-1}$, $C = 0.0785\text{ cm}^{-1}$ for C_6D_6 .³² The operators $j_{yA} = \frac{\hbar}{i} \frac{\partial}{\partial \beta_A}$ and $j_{yB} = \frac{\hbar}{i} \frac{\partial}{\partial \gamma_B}$ represent the internal angular momenta associated with cap tilt and stem rotation, respectively, and $J_y = \frac{\hbar}{i} \frac{\partial}{\partial \chi'}$ is the total angular momentum operator for overall rotation of the dimer about the y axis, with rotation angle χ' . The value of R is fixed and μ_{AB} is the reduced mass of the dimer. Note that this kinetic operator includes a coupling term $2j_{yA}j_{yB}/(2\mu_{AB}R^2)$ between the monomer angular momenta, as well as Coriolis coupling terms $-2(j_{yA} + j_{yB})J_y/(2\mu_{AB}R^2)$ between the monomer rotations and the overall rotation. As will be discussed below, these terms are essential to let the model explain the experimental data.

The eigenstates of this Hamiltonian are obtained by diagonalization of its matrix in the product basis

$$|n_A\rangle |k_B\rangle |K_y\rangle. \quad (2)$$

The functions $|n_A\rangle$ are sinc DVR functions,^{33,34} in the angle β_A describing the tilt of the cap, $|k_B\rangle$ are free rotor functions $\exp(ik_B\gamma_B)/\sqrt{2\pi}$ for the hindered stem rotation, and $|K_y\rangle$ are

free rotor functions $\exp(iK_y\chi')/\sqrt{2\pi}$ for the overall rotation of the dimer about its y axis. The quantum number K_y is an exact quantum number of the Hamiltonian in eqn (1). The symmetry group of this Hamiltonian with the potential of Fig. 3 that has a sixfold barrier in the angle γ_B is the dihedral group D_6 . The irreps of this group are labeled with $k_{\text{stem}} = k_B \pmod{6}$ and the parity p_{tilt} under the sign change $(\beta_A, \gamma_B) \rightarrow (-\beta_A, -\gamma_B)$, which we will call the tilt parity. The levels with stem rotation quantum numbers $k_{\text{stem}} = 0$ and 3 and even tilt parity correspond to the irreps A_1 and B_2 , those with odd tilt parity to the irreps A_2 and B_1 .³⁵ The levels of E_1 and E_2 symmetry with $k_{\text{stem}} = \pm 1$ and ± 2 are twofold degenerate.

The sinc DVR basis covered the range of $-45^\circ \leq \beta_A \leq 45^\circ$ with a step size of 1.5° . The free rotor basis for stem rotation that converged the tunneling splittings to better than 1 Hz had k_B ranging from -96 to 96 . We note here that the Wigner function bases for the monomer rotations in the 6D calculations¹² had to be truncated at $j_{\text{max}} = |k_{\text{max}}| = 24$. Matrix elements of the kinetic energy operators j_{yA} and j_{yA}^2 were obtained with the formulae in ref. 33 and 34, the potential is diagonal in the sinc DVR basis. The kinetic energy operators j_{yB} and j_{yB}^2 are diagonal in the free rotor basis $|k_B\rangle$, the potential matrix elements in this basis are calculated numerically on a Fourier grid with step size 1.5° for $0^\circ \leq \gamma_B \leq 360^\circ$. The operator J_y is diagonal in the basis $|K_y\rangle$, with eigenvalues K_y .

The levels calculated as described above correspond to overall rotation of the dimer about the y axis, with quantum number K_y . Considering the T-shaped dimer as a rigid rotor in three-dimensional space, this quantum number K_y corresponds to the asymmetric rotor quantum number K_c . In the FTMW spectrum transitions are measured between rotational levels of the dimer with quantum numbers J and $K \equiv K_a$, the total dimer angular momentum and its projection on the dimer z axis. In order to compare the calculated level splittings with the measured data we define two BF frames on the dimer, one with the usual definition in which the dimer rotation quantum number $K \equiv K_a$ is the projection of J on the z axis – we call this the “ z axis frame” – and one called the “ y axis frame” for which the rotations are quantized with respect to the dimer y axis and the projection quantum number K is replaced by $K_y \equiv K_c$. Let us then assume that the rotation of the usual dimer “ z axis frame” with respect to a space-fixed frame is described by the Euler angles ϕ, θ, χ , with the symmetric rotor basis $D_{MK}^{(J)}(\phi, \theta, \chi)^*$, and the rotation of the “ y axis frame” by the angles ϕ', θ', χ' , with the symmetric rotor basis $D_{MK_y}^{(J)}(\phi', \theta', \chi')^*$. The transformation from one frame to the other involves the same Euler angles over $(90^\circ, 90^\circ, 0^\circ)$ as used to fix the stem C_6 axis at $(\alpha, \beta_B) = (90^\circ, 90^\circ)$. This rotation has the following effect on the symmetric rotor bases³⁶

$$D_{MK}^{(J)}(\phi, \theta, \chi)^* = \sum_{K_y} D_{MK_y}^{(J)}(\phi', \theta', \chi')^* D_{K_y K}^{(J)}(\pi/2, \pi/2, 0)^*. \quad (3)$$

The energies are expectation values of the Hamiltonian with respect to the symmetric rotor bases, the Hamiltonian is



diagonal in K_y , and the energy levels for given J, K can be simply obtained from the levels E_{K_y} calculated for each K_y as

$$E_{J,K} = \sum_{K_y=-J}^J E_{K_y} \left| D_{K_y,K}^{(J)}(\pi/2, \pi/2, 0) \right|^2. \quad (4)$$

The eigenstates were calculated separately for each of the D_6 irreps. The irrep label k_{stem} refers to the stem hindered rotation. The A_1, B_2 levels with $k_{\text{stem}} = 0, 3$ and $p_{\text{tilt}} = +$ correspond to the tilt tunneling ground state, the A_2 and B_1 levels with $p_{\text{tilt}} = -$ to the tilt tunneling excited state. The tilt parity of the E_1 and E_2 levels with $k_{\text{stem}} = \pm 1$ and ± 2 is not strictly defined. However, the calculated wavefunctions for the lowest two levels of each of these irreps, which correspond to the tilt tunneling ground and first excited states, are almost perfectly symmetric and anti-symmetric combinations. Thus, we will label also the E_1 and E_2 levels with $p_{\text{tilt}} = \pm$, but one should realize that it is not an exact symmetry in this case. Higher tilt levels are vibrationally excited, but these have considerably higher energies and will not be discussed here. Also for the strongly hindered stem rotation we find vibrationally excited levels much higher in energy, but we restrict ourselves to the lower levels that may be regarded as tunneling levels of the vibrational ground state. The stem rotation tunneling levels with $k_{\text{stem}} = 0, \pm 1, \pm 2, 3$ form quartets, with splittings that are the differences between the energy levels belonging to the same p_{tilt} and different k_{stem} . The tilt tunneling splittings are the differences between the levels with $p_{\text{tilt}} = -$ and $p_{\text{tilt}} = +$ and the same k_{stem} . Only transitions between levels belonging to the same k_{stem} are allowed by the selection rules, see Fig. 1. All we need to do then, to compare with the line splittings measured in the FTMW spectrum, is to subtract the stem rotation tunneling splittings obtained for J, K from those for $J + 1, K$.

B. Intensities, dipole functions

Also the intensities of the lines in each tunneling quartet in the FTMW spectrum show a characteristic pattern. In order to calculate these intensities, we constructed a dipole function that was used in our model to compute transition line strengths. The main contribution to the dipole moment function in a dimer of quadrupolar molecules as we have here, is the quadrupole induced dipole moment. This is a long range contribution, proportional to R^{-4} . General formulae for multipole moments induced on the monomers in a molecular dimer by the field of the multipole moments of the other monomer are given in ref. 37, eqn (35), (36), and (40). These formulae contain the spherical components of the monomer multipole moments and polarizabilities. If we rewrite them in terms of Cartesian components and substitute the fixed equilibrium values of $\gamma_A, \alpha, \beta_B$ we obtain for the dipole induced in the stem B by the quadrupole $Q_{2,0}^A$ of the cap A

$$\begin{aligned} d_z^{\text{LR}} &= \frac{3}{2} Q_{2,0}^A \alpha_{\parallel} [1 - 3 \cos^2(\beta_A)] R^{-4} \\ d_x^{\text{LR}} &= 3 Q_{2,0}^A \alpha_{\parallel} \sin(\beta_A) \cos(\beta_A) R^{-4}. \end{aligned} \quad (5)$$

The xz plane components d_z and d_x are parallel and perpendicular to \mathbf{R} , respectively; α_{\parallel} and α_{\perp} are the in-plane and out-of-plane

polarizabilities of the benzene monomer. A similar derivation yields for the dipole in the cap A induced by the quadrupole $Q_{2,0}^B$ of the stem B

$$\begin{aligned} d_z^{\text{LR}} &= -\frac{3}{2} Q_{2,0}^B [\alpha_{\perp} \cos^2(\beta_A) + \alpha_{\parallel} \sin^2(\beta_A)] R^{-4} \\ d_x^{\text{LR}} &= -\frac{3}{2} Q_{2,0}^B [\alpha_{\parallel} - \alpha_{\perp}] \sin(\beta_A) \cos(\beta_A) R^{-4}. \end{aligned} \quad (6)$$

For the quadrupole moment and the polarizability of benzene we used the experimental values $Q_{2,0} = -6.46ea_0^2$,³⁸ $\alpha_{\parallel} = 81a_0^3$, and $\alpha_{\perp} = 44a_0^3$.^{39,40} The total long range dipole moment is the sum of the contributions in eqn (5) and (6).

Both d_z^{LR} and d_x^{LR} depend on the cap tilt angle β_A , but not on the stem rotation angle γ_B , since both the quadrupole moment and the dipole polarizability of the benzene molecule have axial symmetry. Therefore, we also modeled a short range contribution that depends on γ_B as well, of the following form

$$\begin{aligned} d_z^{\text{SR}} &= d_{\text{even}}(\beta_A) + \cos[6(\gamma_B - \beta_A)] \\ d_x^{\text{SR}} &= d_{\text{odd}}(\beta_A) + \sin[6(\gamma_B - \beta_A)]. \end{aligned} \quad (7)$$

The functions d_{even} and d_{odd} contain even and odd powers of β_A , respectively, with a maximum power of 4, with coefficients chosen to more or less represent the expected qualitative behavior of the short range contributions and to yield a substantial dipole moment in the regions where the dimer wave functions are localized. Their precise values were not important since we only wanted to know the relative line strengths of the lines in each tunneling quartet and we found, see below, that these line strengths were practically equal for all values of the coefficients.

The components d_z and d_x of the two-dimensional dipole moment functions are defined with respect to a BF frame fixed on the dimer. We also define components with respect to a space-fixed (SF) frame that depend on the overall rotation angle χ' of the dimer about its y axis. First we define BF two-dimensional spherical components

$$\begin{aligned} d_{-1} &= -(d_z + id_x)/\sqrt{2} \\ d_1 &= (d_z - id_x)/\sqrt{2} \end{aligned} \quad (8)$$

and then we use

$$d_m^{\text{SF}} = d_m \exp(im\chi') \quad (9)$$

for $m = -1, 1$. With all of the different SF dipole moment functions we calculated the line strengths of the allowed transitions with $\Delta K_y = \pm 1$ between the corresponding levels of the stem rotation tunneling quartets. To this end, we first calculated the matrix elements of the dipole functions over the basis in eqn (2). Then, transition dipole moments were obtained by multiplication of these matrices from the left and from the right with the eigenvectors obtained from the diagonalization of the Hamiltonian. Since we were only interested in relative intensities of the lines in each quartet, and we found the strengths of these lines to be equal, we did not need to



transform the transition line strengths to the J, K basis, as we did for the level splittings.

IV. Experimental results

A. Rotational spectrum and internal dynamics of $(\text{C}_6\text{H}_6)_2$

Although the rotational spectrum of the tilted T-shaped structure of the benzene dimer is expected to be that of a near-prolate asymmetric top with $A \gg B > C$, we unambiguously observed the rotational spectrum of a prolate symmetric top for $(\text{C}_6\text{H}_6)_2$, in agreement with the findings of Arunan and Gutowsky in 1993.⁹ As also stated in ref. 9, several more transitions having singlet and doublet structures have been observed, which we did not attempt to assign yet. For $(\text{C}_6\text{H}_6)_2$, we detected 16 symmetric-top transitions, ranging from $J + 1, K \leftarrow J, K = 4, 1 \leftarrow 3, 1$ at 3413.6 MHz to $10, 2 \leftarrow 9, 2$ at 8476.5 MHz. As mentioned before, each $J + 1, K \leftarrow J, K$ transition is split into four components that exhibit a very characteristic splitting pattern with lines at frequencies $-2\Delta, -\Delta, +\Delta, +2\Delta$ with respect to the average frequency. That is, the separations between consecutive lines have a ratio of 1:2:1, the size Δ of the splittings depends on J and K . Fig. 4 shows the $6, 0 \leftarrow 5, 0$ transition as an example for a typical rotational transition of $(\text{C}_6\text{H}_6)_2$. Each component of this transition is further split by 28 kHz due to the Doppler effect that is typical for the COBRA implementation. The Doppler splittings depend on the carrier gas (*i.e.*, on the velocity of the molecular beam) and on the respective excitation frequency and are indicated by bars. The actual transition frequencies are the arithmetic mean of the Doppler split lines. For the $6, 0 \leftarrow 5, 0$ transition, the larger tunneling splitting amounts to 125 kHz, the two smaller

splittings are 62–63 kHz, which results in the characteristic 1:2:1 splitting pattern. As mentioned in Section IIIA, this 1:2:1 splitting pattern perfectly resembles the fingerprint of tunneling in a high-barrier V_6 potential. A more detailed discussion follows in Section V. The four components of all $J + 1, K \leftarrow J, K$ rotational transitions are listed in Table 1, along with the residuals from individual fits for each component using a symmetric-top Hamiltonian (*vide infra*). The assignment of the four components to specific values of the tunneling quantum number k_{stem} is discussed in Section VA.

We determined the transition intensities for all tunneling components of the $J + 1, K \leftarrow J, K = 5, 0 \leftarrow 4, 0; 5, 1 \leftarrow 4, 1; 7, 0 \leftarrow 6, 0$ and the $7, 1 \leftarrow 6, 1$ transitions by carefully remeasuring each component with two different polarization powers to exclude overpolarization effects. The intensity pattern follows a 3:2:2:1 behavior, with an error of about 20%, with the lowest-frequency component of each quartet having the largest intensity. We obtain very similar results for rotational transitions involving even or odd K values.

Table 2 summarizes the spectroscopic parameters of the benzene dimer resulting from four individual fits for each quartet component using a symmetric-top Hamiltonian including centrifugal distortion. For a $J + 1, K \leftarrow J, K$ transition of a prolate symmetric top the transition frequency is given by

$$\nu(J, K) = 2B(J + 1) - 4D_J(J + 1)^3 - 2D_{JK}(J + 1)K^2 + 2H_J(J + 1)^3(3J^2 + 6J + 4) + 4H_{JK}(J + 1)^3K^2 + 2H_{KJ}(J + 1)K^4, \quad (10)$$

with the rotational quantum number J , the projection K of J onto the molecular symmetry axis, the rotational constant B , the quartic centrifugal distortion constants D_J and D_{JK} , and the sextic centrifugal distortion constants H_J , H_{JK} and H_{KJ} . Only transitions involving $K = 0$ and $K = 1$ are included in the fitting. In a prolate symmetric top the energy levels increase with increasing K , see eqn (10), and the energy levels with higher K values might come close to the tunneling barrier. Hence, perturbations play an increasingly important role and eventually become too dominant to be modeled using a semi-rigid rotor Hamiltonian approach not considering large-amplitude motions. This becomes apparent when considering the residuals from the fit given in Table 1 for all transitions. For transitions with $K > 1$ the deviation between experimental and fitted values amounts to several 100 kHz, which justifies that the fitting has been limited to transitions with $K = 0$ and 1.

The tilted T-shaped equilibrium structure corresponds to a near-prolate asymmetric top with rotational constants $A = 1914.5$ MHz, $(B + C)/2 = 430.0$ MHz and $B - C = 31.5$ MHz (see Table 9 in ref. 12). Also the rotational constants of different vibration–rotation–tunneling (VRT) states of the benzene dimer obtained from 6D calculations are given in this table. The value of $(B + C)/2$ calculated for the ground vibrational state is 423.9 MHz, in good agreement with our measured symmetric-top spectrum which yields rotational constants B ranging from 427.7277 MHz to 427.7479 MHz (Table 2) for the four

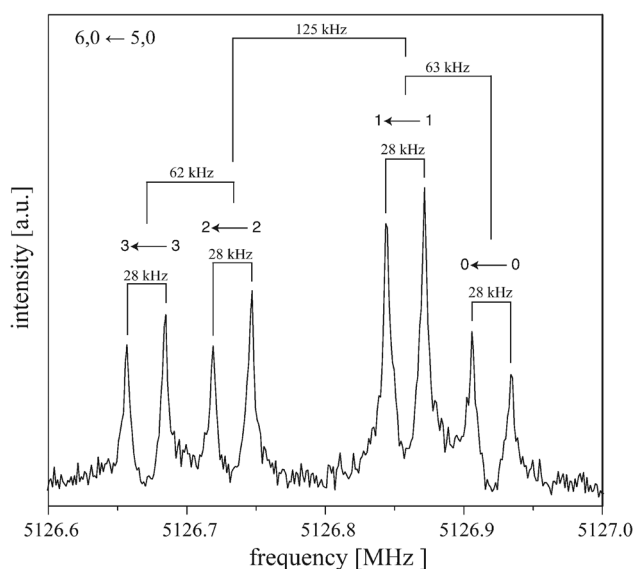


Fig. 4 Typical symmetric-top transition ($6, 0 \leftarrow 5, 0$) of $(\text{C}_6\text{H}_6)_2$ measured with neon as carrier gas. The polarization frequency of the microwave excitation pulse is 5126.8 MHz. Each component is split (here by 28 kHz, as indicated with bars) due to the Doppler effect typical for the coaxially oriented beam resonator arrangement (COBRA) FTMW spectrometer. Above each component it is indicated to which k_{stem} transition this line is assigned, see Fig. 1.



Table 1 Frequencies of the rotational transitions observed for a symmetric-top benzene dimer and the residuals to the fitted symmetric-top frequencies; the larger residuals for $K > 1$ are explained in the text. The assignment to the stem rotation tunneling levels with different k_{stem} is given for the lower tilt tunneling levels

Transition $J', K' \leftarrow J, K$	k_{stem} Tunneling components [MHz]				Residuals [kHz]			
	$3 \leftarrow 3$	$2 \leftarrow 2$	$1 \leftarrow 1$	$0 \leftarrow 0$	$3 \leftarrow 3$	$2 \leftarrow 2$	$1 \leftarrow 1$	$0 \leftarrow 0$
4, 1 \leftarrow 3, 1	3413.6036	3413.6476	3413.7337	3413.7778	0.930	1.812	2.155	−0.505
5, 0 \leftarrow 4, 0	4273.7754	4273.8272	4273.9307	4273.9815	1.190	0.560	−0.730	−2.510
5, 1 \leftarrow 4, 1	4265.9261	4265.9806	4266.0894	4266.1441	−0.520	1.240	0.580	−4.090
5, 2 \leftarrow 4, 2	4242.2571	4242.3193	4242.4435	4242.5061	115.480	124.530	126.500	116.880
5, 3 \leftarrow 4, 3	4206.1185	4206.1898	4206.3314	4206.4016	−3000.860	−2975.970	−2961.450	−2973.660
6, 0 \leftarrow 5, 0	5126.6702	5126.7319	5126.8570	5126.9201	2.029	1.980	−0.299	−4.559
6, 1 \leftarrow 5, 1	5117.5218	5117.5871	5117.7174	5117.7822	−1.501	0.880	0.590	−6.869
6, 2 \leftarrow 5, 2	5090.0919	5090.1652	5090.3120	5090.3853	−27.411	−15.050	−10.119	−30.440
7, 0 \leftarrow 6, 0	5978.5387	5978.6124	5978.7591	5978.8335	4.002	2.758	−0.187	−5.907
7, 1 \leftarrow 6, 1	5968.2379	5968.3139	5968.4663	5968.5426	−1.118	2.258	2.242	−10.897
7, 2 \leftarrow 6, 2	5937.5399	5937.6239	5937.7924	5937.8759	−220.988	−204.562	−195.707	−231.877
8, 1 \leftarrow 7, 1	6817.9194	6818.0063	6818.1789	6818.2659	0.568	5.204	7.370	−12.079
9, 1 \leftarrow 8, 1	7666.4083	7666.5055	7666.7009	7666.7985	2.101	9.328	11.836	−15.954
9, 2 \leftarrow 8, 2	7630.8530	7630.9579	7631.1647	7631.2688	−669.049	−642.572	−618.954	−708.334
10, 1 \leftarrow 9, 1	8513.5432	8513.6521	8513.8701	8513.9779	1.090	10.280	14.340	−23.530
10, 2 \leftarrow 9, 2	8476.4752	8476.5892	8476.8138	8476.9273	−856.850	−822.820	−789.380	−916.870

Table 2 Rotational constant B and centrifugal distortion parameters for each component of the $(\text{C}_6\text{H}_6)_2$ quartet structure, fitted using all observed transitions with $K = 0$ and 1 (see Table 1) according to eqn (10). The last line gives the root mean square deviation of the fitted values from the experimental values for all considered transitions with $K = 0$ and 1. The terms $-2D_{JK}(J+1)K^2$ and $+2H_{KJ}(J+1)K^4$ in eqn (10) are equivalent if only transitions with $K = 0$ and 1 are considered. Therefore, the sum of both terms is fitted and parameterized with Σ

Parameter	k_{stem} Tunneling components			
	$3 \leftarrow 3$	$2 \leftarrow 2$	$1 \leftarrow 1$	$0 \leftarrow 0$
B [MHz]	427.7277 ± 0.0002	427.7328 ± 0.0003	427.7430 ± 0.0003	427.7479 ± 0.0003
D_J [kHz]	6.970 ± 0.003	6.970 ± 0.004	6.970 ± 0.005	6.970 ± 0.004
Σ^a [MHz]	0.8361 ± 0.0003	0.8356 ± 0.0003	0.8350 ± 0.0004	0.8344 ± 0.0003
H_J [Hz]	-0.81 ± 0.02	-0.80 ± 0.02	-0.79 ± 0.02	-0.79 ± 0.02
H_{JK} [kHz]	1.020 ± 0.003	1.020 ± 0.003	1.020 ± 0.004	1.010 ± 0.004
rms [kHz]	1.79	4.92	6.41	10.95

^a Σ corresponds to $D_{JK} - H_{KJ}$.

tunneling components. The value of $B - C$ is a direct measure of the asymmetry of the complex. As already suggested by Henson *et al.*⁸ and as can be understood from the calculated low barrier of only $6 \text{ cm}^{-1} \approx 0.07 \text{ kJ mol}^{-1}$, the 6D calculations show that the benzene cap in the T-shaped dimer structure is nearly freely rotating about its C_6 axis. One can observe in Table 9 of ref. 12 that the rigid rotor value of $B - C = 31.5 \text{ MHz}$ is reduced to 11.2 MHz for the vibrational ground state of A_1^+/A_2^+ symmetry and, hence, that some dynamical averaging of the asymmetry occurs. Still, the calculated asymmetry seems to disagree with the experimental observation that the benzene dimer is a symmetric top ($B = C$). One should realize, however, that only the rotational constants of VRT states of A type symmetry in the G_{576} group could be obtained from the 6D calculations.¹² A group-theoretical analysis shows that in the states of G and K type symmetry (see Table 4 in ref. 12) the benzene dimer with nearly free internal cap rotation behaves as a symmetric top. The observation of a symmetric-top spectrum for the benzene dimer in our experiments is a strong indication that we observed transitions between such G and K type states. Also for other benzene complexes with low barriers to internal rotation, such as benzene- H_2O ,

benzene- H_2S , and benzene- CO the rotational spectra exhibit symmetric-top structures.^{41,42}

B. Rotational spectrum of $(\text{C}_6\text{D}_6)^{\text{C}}(\text{C}_6\text{H}_6)^{\text{S}}$

To gain a more detailed picture of the internal dynamics of the highly floppy benzene dimer, we also recorded the rotational spectrum of the mixed dimer $(\text{C}_6\text{D}_6)^{\text{C}}(\text{C}_6\text{H}_6)^{\text{S}}$. Similarly to $(\text{C}_6\text{H}_6)_2$, the rotational spectrum of $(\text{C}_6\text{D}_6)^{\text{C}}(\text{C}_6\text{H}_6)^{\text{S}}$ follows that of a prolate symmetric top, with each rotational transition being split into four components. Fig. 5 shows the rotational transition $7, 2 \leftarrow 6, 2$ of $(\text{C}_6\text{D}_6)^{\text{C}}(\text{C}_6\text{H}_6)^{\text{S}}$ measured with neon as carrier gas (right). For comparison, the same transition is also shown for $(\text{C}_6\text{H}_6)_2$ (left). The $(\text{C}_6\text{D}_6)^{\text{C}}(\text{C}_6\text{H}_6)^{\text{S}}$ rotational transitions are significantly broadened and thus less intense. This drastic difference results from the quadrupole coupling of the six deuterium nuclei ($I_D = 1$). No attempts have been undertaken here to analyze the deuterium quadrupole hyperfine splitting pattern, since the splittings are only barely resolved.

Again, the observed tunneling splittings exhibit a 1:2:1 ratio. Due to the large broadening of the observed lines, however, the precision in determining the line frequencies is lower for $(\text{C}_6\text{D}_6)^{\text{C}}(\text{C}_6\text{H}_6)^{\text{S}}$ than for $(\text{C}_6\text{H}_6)_2$. Furthermore, no



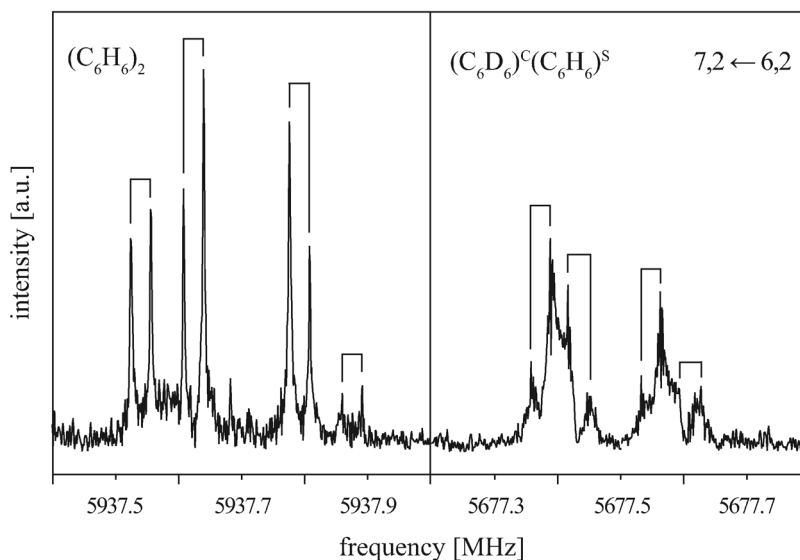


Fig. 5 Rotational transition $7, 2 \leftarrow 6, 2$ of $(\text{C}_6\text{H}_6)_2$ (left) and $(\text{C}_6\text{D}_6)^{\text{C}}(\text{C}_6\text{H}_6)^{\text{S}}$ (right) measured with neon as a carrier gas. Note that the additional line broadening from the deuterium nuclear quadrupole coupling in $(\text{C}_6\text{D}_6)^{\text{C}}(\text{C}_6\text{H}_6)^{\text{S}}$ obscures the 1 : 2 : 1 splitting pattern to some extent.

Table 3 Frequencies of the observed rotational transitions of the mixed dimer $(\text{C}_6\text{D}_6)^{\text{C}}(\text{C}_6\text{H}_6)^{\text{S}}$ that can be assigned to $J + 1, K \leftarrow J, K$ transitions, as well as the residuals of the central frequencies to the fitted symmetric-top line centers. The mean values of the nuclear quadrupole split lines ($I_{\text{D}} = 1$) have been taken. The assignment to the stem rotation tunneling levels with different k_{stem} is given for the lower tilt tunneling levels

Transition $J', K' \leftarrow J, K$	Line center ^a [MHz]	k_{stem} Tunneling components [MHz]				Residual ^b [kHz]
		$3 \leftarrow 3$	$2 \leftarrow 2$	$1 \leftarrow 1$	$0 \leftarrow 0$	
5, 0 \leftarrow 4, 0	4087.1480	4087.0897	4087.1192	4087.1777	4087.2054	1.79
5, 1 \leftarrow 4, 1	4079.3956	4079.3281	4079.3604	4079.4309	4079.4628	0.23
6, 2 \leftarrow 5, 2	4866.8521	4866.7501	4866.8022	4866.9033	4866.9527	21.75
7, 0 \leftarrow 6, 0	5718.0182	5717.9193	5717.9701	5718.0662	5718.1172	0.36
7, 1 \leftarrow 6, 1	5707.8468	5707.7438	5707.7953	5707.8984	5707.9496	1.63
7, 2 \leftarrow 6, 2	5677.4893	5677.3720	5677.4304	5677.5469	5677.6078	−151.32
8, 1 \leftarrow 7, 1	6520.8669	6520.7488	6520.8082	6520.9249	6520.9859	4.71
9, 1 \leftarrow 8, 1	7332.9137	7332.7739	7332.8526	7332.9745	7333.0537	4.25

^a The frequencies of the four components are averaged to give the line center. ^b Residue between the experimental line center and the fitted frequencies.

attempt was made to determine the intensities of the four tunneling components. The transitions with a well-resolved quartet structure are listed in Table 3. Due to the broadened lines, only the center frequencies of the quartets for transitions with $K = 0$ and $K = 1$ have been considered in the fitting of the rotational parameters. Due to the lower resolution and precision, the fit parameters are limited to the rotational constant B and the quartic centrifugal distortion terms D_J and $D_{JK} - H_{KJ}$, see Table 4. Comparison of the symmetric-top rotational transitions of $(\text{C}_6\text{D}_6)^{\text{C}}(\text{C}_6\text{H}_6)^{\text{S}}$ with the corresponding transitions of $(\text{C}_6\text{H}_6)_2$ shows that the $(\text{C}_6\text{D}_6)^{\text{C}}(\text{C}_6\text{H}_6)^{\text{S}}$ quartet splittings are reduced to about 70% of the $(\text{C}_6\text{H}_6)_2$ splittings. This will be discussed in more detail in Section VA.

C. Stark effect measurements

Using the CAESAR setup as implemented in the Hannover COBRA FTMW spectrometer,²⁹ we measured the Stark shifts of five symmetric-top transitions ($J + 1, K \leftarrow J, K = 5, 0 \leftarrow 4, 0; 5, 1 \leftarrow 4, 1; 7, 0 \leftarrow 6, 0; 7, 1 \leftarrow 6, 1; 9, 1 \leftarrow 8, 1$) of $(\text{C}_6\text{H}_6)_2$ for

Table 4 Rotational constant B and centrifugal distortion parameters for $(\text{C}_6\text{D}_6)^{\text{C}}(\text{C}_6\text{H}_6)^{\text{S}}$. Due to the increased line widths arising from nuclear quadrupole coupling of the deuterium nuclei, only the center frequencies of the four tunneling components of each rotational $J + 1, K \leftarrow J, K$ transition were considered in the fit to a semi-rigid symmetric-rotor Hamiltonian

Parameter	
B [MHz]	409.0090 (1)
D_J [kHz]	5.850 (1)
Σ^a [MHz]	0.8264 (1)
H_J [Hz]	−0.80 (2) ^b
H_{JK} [kHz]	1.020 (4) ^b
rms [kHz]	2.78

^a Σ corresponds to $D_{JK} - H_{KJ}$. ^b Kept constant at the values for $(\text{C}_6\text{H}_6)_2$.

different electric field strengths up to 172.2 V cm^{-1} . The Stark shift of a particular molecular level is directly dependent on the molecular dipole moment. Consequently, the combination of Stark effect measurements with high-resolution spectroscopy is ideal for precisely determining molecular dipole moments and



Table 5 Experimentally determined Stark shifts of the individual tunneling transitions as a function of the voltage applied to the rear parabolic reflector of the microwave spectrometer. The electric field strength U/d is obtained using $d = 0.59644$ m for the $5, 0 \leftarrow 4, 0$ transition and $d = 0.58746$ m for the $7, 0 \leftarrow 6, 0$ transition

U [kV]	k_{stem} Tunneling components			
	$3 \leftarrow 3$	$2 \leftarrow 2$	$1 \leftarrow 1$	$0 \leftarrow 0$
$5, 0 \leftarrow 4, 0$				
0	4273.7753	4273.8267	4273.9305	4273.9821
2.5	4273.7750	4273.8268	4273.9305	4273.9829
5	4273.7750	4273.8252	4273.9295	4273.9806
7.5	4273.7701	n.d.	4273.927	n.d.
10	4273.8175	4273.8262	4273.9240	4273.9375
$7, 0 \leftarrow 6, 0$				
0	5978.5391	5978.6130	n.d.	n.d.
2.5	5978.5391	5978.6118	n.d.	n.d.
5	5978.5388	5978.6121	n.d.	n.d.
7.5	5978.5381	5978.6108	n.d.	n.d.
10	5978.5361	5978.6092	n.d.	n.d.
12	5978.5352	5978.6074	n.d.	n.d.

n.d.: not determined.

thus gaining further information about the molecular structure. For $(\text{C}_6\text{H}_6)_2$, $K = 1$ transitions exhibit a linear Stark effect, *i.e.*, a linear frequency shift as a function of the electric field strength, while transitions involving $K = 0$ show a quadratic Stark effect at moderate electric field strengths. This is usual for a symmetric top.

Table 5 summarizes the results for the two $K = 0$ rotational transitions used to quantitatively determine the dipole moment of $(\text{C}_6\text{H}_6)_2$. The linear Stark shifts of $K = 1$ transitions have not been quantitatively analyzed due to their already enormous shifts at low electric field strengths.

Fig. 6 shows the behavior of the four components of the $5, 0 \leftarrow 4, 0$ transition (left) and of the first and second component of the $7, 0 \leftarrow 6, 0$ transition (right) measured in the presence of an external electric field for different field strengths.

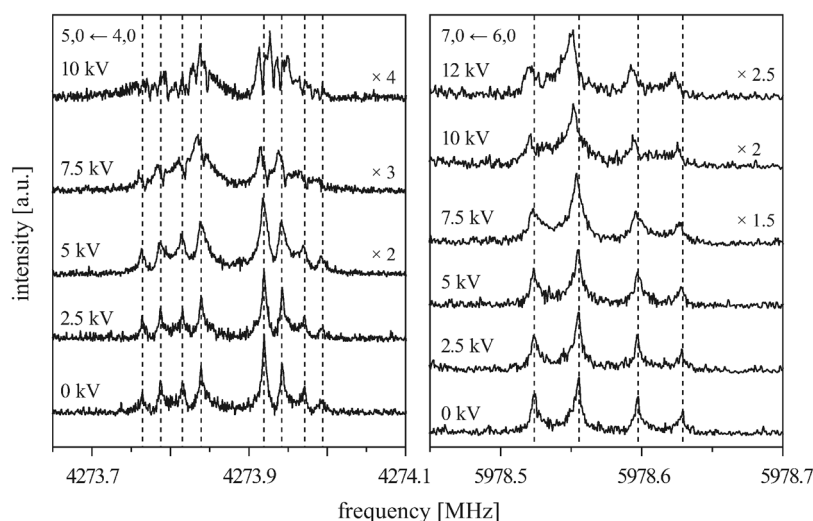


Fig. 6 The $5, 0 \leftarrow 4, 0$ transition (left) and the $k_{\text{stem}} = 3 \leftarrow 3$ and $2 \leftarrow 2$ components of the $7, 0 \leftarrow 6, 0$ transition (right) measured in the presence of an external electric field with various field strengths, as indicated by the applied voltage. Each component is split by the Doppler effect. The spectra without electric field are shown for comparison.

Again, each component is split by the Doppler effect. To make it easier to compare different measurements, the individual lines of the Doppler doublets of the zero-field transitions are indicated by dashed lines. The given voltages U (applied to the rear parabolic reflector, as described in more detail in ref. 29) correlate with the electric field strength according to U/d , with d being an effective distance between the two microwave reflectors ($d_{5,0 \leftarrow 4,0} = 0.59644$ m and $d_{7,0 \leftarrow 6,0} = 0.58746$ m, respectively).

At low electric field strengths, the tunneling components of the rotational transitions are hardly shifted, and any Stark splitting is too small to be observed (Fig. 6). At higher electric field strengths the lines are slightly broadened and a small shift is observed, which increases with increasing field strength. The detailed Stark splitting pattern cannot be determined precisely enough since the signal-to-noise ratio is strongly reduced with increasing electric field strength. Therefore, an unambiguous assignment of the individual M_J components is not possible for the transitions $5, 0 \leftarrow 4, 0$ and $7, 0 \leftarrow 6, 0$. Instead a value, say α , is determined that corresponds to the average frequency shift (relative to the frequency of the transition in zero electric field) of all possible $M_{J+1} \leftarrow M_J$ transitions between two specific rotational levels $J + 1$, $K = 0$ and J , $K = 0$.⁴³ In this analysis, all possible transitions are weighted by their relative intensities f_i according to

$$\alpha = \frac{1}{n} \sum_{i=1}^n f_i \alpha_i, \quad (11)$$

where α_i are the transition energy shifts of the individual M_{J_i} components

$$\alpha_i = \frac{(J+1)(J+2) - 3(M_{J_i} \pm 1)^2}{(J+1)(J+2)(2J+1)(2J+5)} - \frac{J(J+1) - 3M_{J_i}^2}{J(J+1)(2J-1)(2J+3)}. \quad (12)$$

The values f_i correspond to the intensities of the respective $J + 1$, $K = 0$, $M_{J+1} \leftarrow J$, $K = 0$, M_J transitions and can be calculated according



to ref. 43. For the M_f components of the transition $5, 0 \leftarrow 4, 0$, α is calculated to be -0.0148 , and for those of the $7, 0 \leftarrow 6, 0$ transition $\alpha = -0.0103$. With these values the dipole moment μ can be determined from the observed Stark shifts $\Delta\nu$ according to

$$\Delta\nu = \frac{\mu^2 E^2}{2Bh^2\alpha}, \quad (13)$$

where E is the electric field strength. All four tunneling components are fitted together; an averaged value of the rotational constant $B = 427.7$ MHz is used.

Based on the components listed in Table 5, the dipole moment of $(C_6H_6)_2$ is determined to be $\mu = 0.580 \pm 0.051$ D. This value is in good agreement with $\mu = 0.51$ D calculated for the T-shaped structure by Hobza *et al.*⁴⁴ As we wrote in Section IIIB, the main contributions to the dipole moment of the benzene dimer are the dipole moments induced on each of the monomers by the electric field of the quadrupole on the other monomer. If we use the expressions for these induced dipole moments in eqn (5) and (6), substitute the values of the benzene quadrupole moment and polarizability given in Section III B, fix the monomers in the orientations that they have in the TT equilibrium structure, and use the vibrationally averaged distance $R = 9.42a_0$, the dipole moment is found to be $\mu = 0.63$ D. This value is in agreement with our measured value, so the assumption that the quadrupole-induced dipole moments are the dominant dipole contributions is indeed justified.

V. Calculated results, discussion

A. Energy levels, tunneling splittings

Table 6 lists the lower energy levels calculated for $|K_y| = 0, 1$, and 2 with the 2D potential of Fig. 3, while Fig. 7 shows some of the corresponding wave functions for $K_y = 0$. We plotted only

Table 6 Energy levels calculated on the potential of Fig. 3 for $|K_y| = 0, 1$ and 2. The energies in the second column are given with respect to the average E_0 of the levels with $p_{\text{tilt}} = +$, those in the fourth column with respect to the average $E_0 + \Delta_{\text{tilt}}$ of the levels with $p_{\text{tilt}} = -$. The third and fifth columns give the separations between consecutive levels

k_{stem}	$p_{\text{tilt}} = +$		$p_{\text{tilt}} = -$	
	Energy (cm^{-1})	Splitting (kHz)	Energy (cm^{-1})	Splitting (kHz)
$K_y = 0, E_0 = -939.3911 \text{ cm}^{-1}, \Delta_{\text{tilt}} = 0.1101 \text{ cm}^{-1}$				
0	-0.0000604		0.0000621	
± 1	-0.0000302	905	0.0000311	-931
± 2	0.0000302	1812	-0.0000311	-1863
3	0.0000605	907	-0.0000622	-932
$ K_y = 1, E_0 = -939.3775 \text{ cm}^{-1}, \Delta_{\text{tilt}} = 0.1101 \text{ cm}^{-1}$				
0	-0.0000598		0.0000614	
± 1	-0.0000299	895	0.0000307	-920
± 2	0.0000299	1791	-0.0000307	-1842
3	0.0000598	896	-0.0000615	-922
$ K_y = 2, E_0 = -939.3366 \text{ cm}^{-1}, \Delta_{\text{tilt}} = 0.1101 \text{ cm}^{-1}$				
0	-0.0000577		0.0000594	
± 1	-0.0000289	865	0.0000297	-889
± 2	0.0000289	1730	-0.0000297	-1779
3	0.0000577	866	-0.0000594	-890

the wave functions for the $A_{1,2}$ and $B_{1,2}$ levels with $k_{\text{stem}} = 0$ and 3, because these levels are nondegenerate and the wave functions are real-valued. The E_1 and E_2 levels are twofold degenerate; obtaining real-valued wave functions would require combining the functions with $k_{\text{stem}} = \pm 1$ and those with $k_{\text{stem}} = \pm 2$. For $K_y \neq 0$ we had to use parity-adapted rotor states in our 2D model by combining $-K_y$ and $+K_y$; otherwise the levels with $k_{\text{stem}} = \pm 1$ and ± 2 were not degenerate.

It is clear from Fig. 7 that (for given K_y) the lowest two levels for each k_{stem} are the tilt tunneling ground and excited states. Table 6 shows a tilt tunneling splitting Δ_{tilt} of about 0.1 cm^{-1} . The 6D calculations of ref. 12 gave a considerably larger tilt tunneling splitting of about 1 cm^{-1} . This can be understood from the shape of the global 6D potential surface in the tilt tunneling region. As discussed in ref. 12, the saddle between two equivalent TT minima is rather wide and the lowest barrier (25 cm^{-1}) occurs not even precisely at the T-shaped structure with C_{2v} symmetry (the S3 geometry in ref. 12 with a barrier of 27 cm^{-1}) but for a bent T-shaped geometry (called S3a in ref. 12). Hence, tilt tunneling is easier when all internal coordinates are included than when the bend angle is fixed at $\beta_B = 90^\circ$ as we did here, so the larger splitting of 1 cm^{-1} in ref. 12 is more realistic.

The energy differences between the lowest levels with $K_y = 0$ for different irreps, A_1, E_1, E_2, B_2 with $k_{\text{stem}} = 0, \pm 1, \pm 2, 3$ are the stem rotation tunneling splittings. The levels in Table 6 show the same $[-2\Delta, -\Delta, +\Delta, +2\Delta]$ quartet splitting pattern as the lines in the FTMW spectrum and the separations between consecutive levels precisely have the ratio of $1:2:1$. The excited tilt tunneling levels with $p_{\text{tilt}} = -$ show very similar splittings as the levels with $p_{\text{tilt}} = +$, but their order is reversed. The energies of the tilt tunneling ground states increase with increasing $k_{\text{stem}} = 0, 1, 2, 3$, those of the excited tilt tunneling states decrease.

If we compare the levels in Table 6 for $|K_y| = 0, 1$, and 2, it becomes clear that the tilt tunneling splitting Δ_{tilt} is nearly independent of K_y , whereas the splittings $\Delta, 2\Delta, \Delta$ in the stem rotation tunneling quartets decrease with increasing $|K_y|$. Levels were calculated for $|K_y|$ as high as 11 and this decrease becomes steeper for higher $|K_y|$. This is essential to explain the splittings of the $\Delta J = 1$ transition frequencies observed in the FTMW spectrum. The dependence of the splittings on $|K_y|$ originates from the Coriolis coupling terms $-2(j_{y_A} + j_{y_B})J_y/(2\mu_{AB}R^2)$ in the Hamiltonian of eqn (1); without these terms the splittings do not depend on K_y . Also the cross term $2j_{y_A}j_{y_B}/(2\mu_{AB}R^2)$ in the kinetic operator of eqn (1) plays a very important role; if we omit this term the splittings are reduced by nearly a factor of 2. Hence, we conclude that the hindered stem rotation is not only coupled to the tilt motion through the (2D) intermolecular potential, also the kinetic coupling between the internal angular momenta associated with these motions is important. These kinetic energy terms are proportional to the end-over-end rotational constant $1/(2\mu_{AB}R^2)$, which is five to ten times smaller than the monomer rotational constants B and C . It seems surprising that such small kinetic energy terms have such an important effect on the tunneling splittings. One must remember, however, that the high-barrier tunneling limit



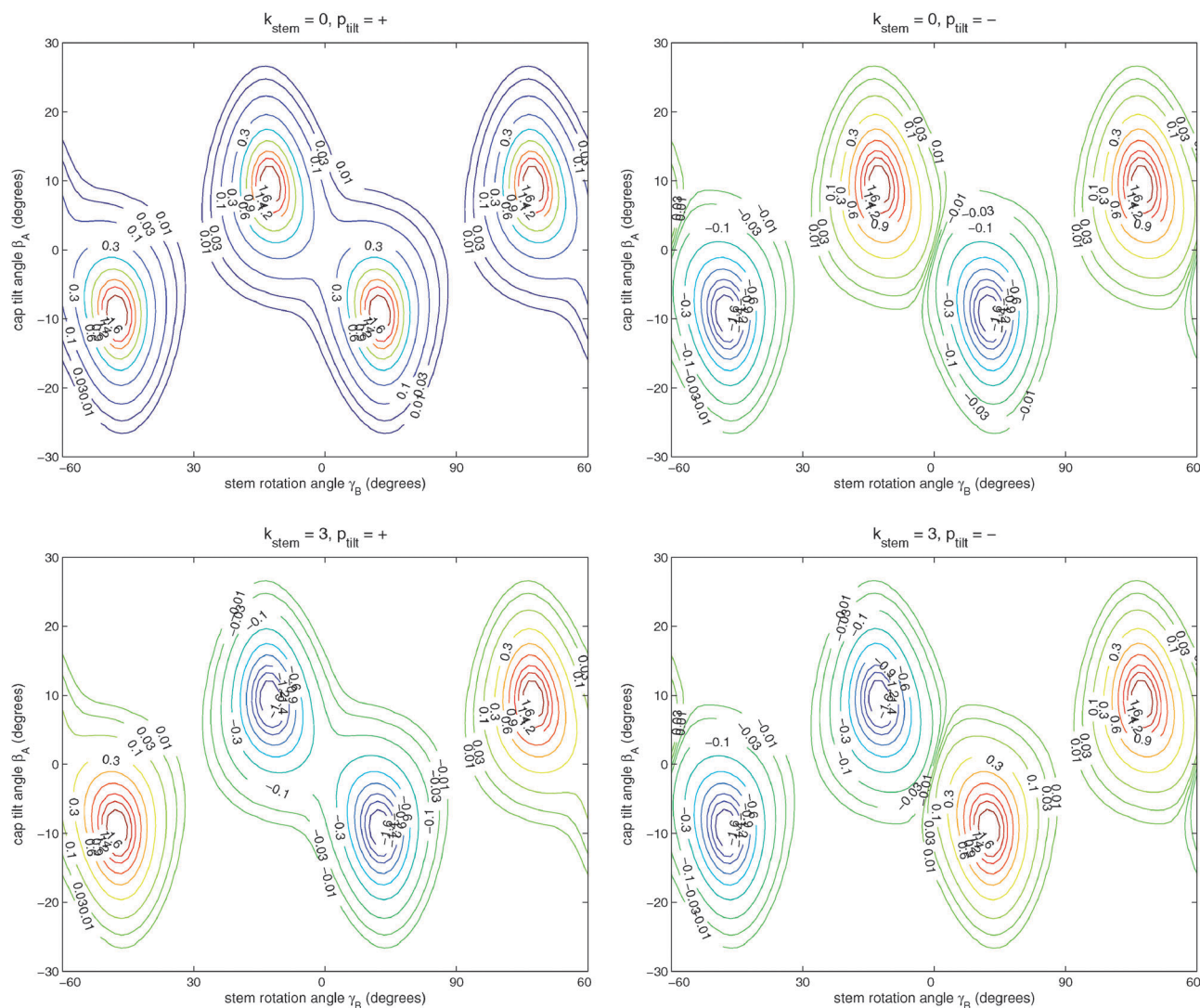


Fig. 7 Wave functions of the ground ($p_{\text{tilt}} = +$) and excited ($p_{\text{tilt}} = -$) tilt tunneling states. The functions in the upper panels belong to the A_1 and A_2 irreps with $k_{\text{stem}} = 0$ and the functions in the lower panels to the B_2 and B_1 irreps with $k_{\text{stem}} = 3$. Note that the $A_{1,2}$ functions are invariant and the $B_{1,2}$ functions change sign when γ_B is changed by 60° .

applies in this case. In this limit the splittings depend exponentially on the height and width of the potential barrier, so it is plausible that they also depend sensitively on the terms in the kinetic energy operator (in simple cases the effective mass, here the effective angular momentum of inertia).

It is also striking that the splittings from the 2D calculations are larger by two orders of magnitude than in a 1D model for sixfold hindered stem rotation with approximately the same barrier. For a barrier of 92 cm^{-1} , which is the barrier for stem rotation in the T-shaped structure, the tunneling splittings from the 1D model introduced in ref. 12 would be 10, 20, and 10 kHz, instead of the splittings given in Table 6 for the 2D model. Tunneling becomes harder when the path is longer and the “motion” is restricted to a lower dimension. In the 2D case, the system can move from a minimum in the potential, see Fig. 3, to the nearest minimum in the next double well by rotating the stem over only 36° , instead of 60° in the 1D model.

Of course, this involves a simultaneous reversal of the cap tilt angle, but that is a fast low barrier tunneling motion.

The levels for all dimer overall rotation quantum numbers J , K with $J \leq 11$ were obtained from the levels calculated for $|K_y| = 0$ to 11 through the transformation of eqn (4). Subtraction of the energies of the levels with given J, K from those with $J + 1, K$ produces transition frequencies that, in principle, could be directly compared with the frequencies of the $\Delta J = 1, \Delta K = 0$ transitions observed in the FTMW spectrum of the benzene dimer. Our 2D model cannot reproduce the correct J, K dependence of the rotational levels, however, so we focus on the tunneling splittings in the comparison with the experimental data. Only transitions between levels with the same k_{stem} are allowed, see Fig. 1, and since the measured transitions are purely rotational, we consider transitions between levels with the same tilt tunneling parity p_{tilt} . Table 7 shows the quartet splittings calculated for such allowed transitions with



Table 7 Separations between consecutive lines in the tunneling quartets (in kHz) calculated on the potential of Fig. 3 for $R = 9.42a_0$ and observed in FTMW spectra. For $p_{\text{tilt}} = + \leftarrow +$ transitions the quartet of lines with increasing transition frequencies corresponds to $k_{\text{stem}} = 3, 2, 1, 0$, for $p_{\text{tilt}} = - \leftarrow -$ transitions to $k_{\text{stem}} = 0, 1, 2, 3$

$J', K' \leftarrow J, K$	$p_{\text{tilt}} = +$		$p_{\text{tilt}} = -$		Measured				
4, 1 \leftarrow 3, 1	39.5	78.7	39.2	40.4	80.9	40.6	44.0	86.1	44.1
5, 0 \leftarrow 4, 0	47.9	95.6	47.7	49.0	98.3	49.3	51.8	103.5	50.8
5, 1 \leftarrow 4, 1	48.1	95.9	47.8	49.2	98.6	49.4	54.4	108.9	54.7
5, 2 \leftarrow 4, 2	48.5	96.7	48.2	49.6	99.4	49.9	62.1	124.2	62.6
5, 3 \leftarrow 4, 3	49.2	98.1	48.9	50.3	100.9	50.6	71.3	141.7	70.2
6, 0 \leftarrow 5, 0	55.7	111.1	55.4	57.0	114.2	57.2	61.7	125.2	63.1
6, 1 \leftarrow 5, 1	55.8	111.4	55.6	57.1	114.6	57.4	65.3	130.4	64.8
6, 2 \leftarrow 5, 2	56.3	112.4	56.1	57.6	115.6	57.9	73.3	146.7	73.4
7, 0 \leftarrow 6, 0	62.5	124.7	62.2	64.0	128.2	64.3	73.7	146.8	74.3
7, 1 \leftarrow 6, 1	62.7	125.1	62.4	64.2	128.6	64.4	76.0	152.2	76.4
7, 2 \leftarrow 6, 2	63.2	126.2	63.0	64.7	129.8	65.0	84.0	168.6	83.5
8, 1 \leftarrow 7, 1	68.5	136.7	68.2	70.2	140.5	70.4	86.9	172.6	87.0
9, 1 \leftarrow 8, 1	73.1	146.0	72.9	75.0	150.1	75.2	97.1	195.5	97.6
9, 2 \leftarrow 8, 2	73.8	147.4	73.6	75.7	151.5	75.9	104.8	206.7	104.1
10, 1 \leftarrow 9, 1	76.6	152.9	76.4	78.6	157.3	78.7	108.8	218.0	107.9
10, 2 \leftarrow 9, 2	77.3	154.4	77.1	79.3	158.8	79.5	114.0	224.6	113.5

$p_{\text{tilt}} = + \leftarrow +$ and $- \leftarrow -$ and the splittings obtained from the experimental data in Table 1. First, we observe that the calculated splittings show the measured 1:2:1 ratio, and that they semi-quantitatively agree with the measured data. Moreover, our model predicts the increase of the splittings with J and the smaller increase with K , in qualitative agreement with the experimental observations. Hence, we conclude that our model has indeed uncovered the mechanism that causes these splittings.

Our calculations also allow us to assign the individual lines in the quartets observed in the FTMW spectrum. The energies of the tunneling levels calculated for $p_{\text{tilt}} = +$ increase with $k_{\text{stem}} = 0, 1, 2, 3$, while the energies calculated for $p_{\text{tilt}} = -$ increase with $k_{\text{stem}} = 3, 2, 1, 0$, see Table 6. If we assume that both tilt tunneling levels are thermally occupied in the molecular beam – an assumption that we will discuss below – the quartets in the FTMW spectrum correspond to a superposition of transitions with $p_{\text{tilt}} = + \leftarrow +$ and $- \leftarrow -$. Table 7 shows that the absolute values of the line splittings are practically the same for $p_{\text{tilt}} = +$ and $-$, so this does not lead to an additional line splitting. Table 6 shows that the level splittings decrease with increasing K , and, therefore, with increasing J and since the FTMW spectrum corresponds to transitions from J to $J + 1$, this implies that the lines in the quartets in increasing frequency order correspond to $k_{\text{stem}} = 3, 2, 1, 0$ for $p_{\text{tilt}} = + \leftarrow +$ transitions and to $k_{\text{stem}} = 0, 1, 2, 3$ for $p_{\text{tilt}} = - \leftarrow -$ transitions.

In principle, it would be possible that the J dependence of the tunneling splittings essential to reproduce the quartet splittings in the FTMW spectrum is an effect of centrifugal distortion. We have investigated this in our 2D model by assuming that centrifugal distortion affects the fixed value of R that enters into the model. We used a 1D radial cut of the 6D *ab initio* potential with all angles fixed at their equilibrium values (see above) and computed the expectation value of R over the radial wave functions calculated on this 1D potential for

different values of J . This expectation value changed only very slightly with J , by about $0.002a_0$ from $J = 0$ to $J = 10$. The value of R determines the 2D cut of the potential used in the model, and thereby the height of the barriers, and it occurs in the end-over-end rotational constant $1/(2\mu_{\text{AB}}R^2)$. From calculations with our 2D model with $R = 9.40, 9.41, 9.42, 9.45$, and $9.50a_0$, it is clear that the J dependence of the tunneling splittings originating from centrifugal distortion is far too weak to explain the observed splittings. These calculations also demonstrated that if we had chosen R somewhat different from the value of $9.42a_0$, the splittings in Table 7 would still qualitatively and semi-quantitatively agree with the experimental data.

Finally, let us discuss the FTMW data measured for the mixed dimer and the corresponding results from our model calculations. In the molecular beam with neon as carrier gas only $(\text{C}_6\text{D}_6)^{\text{C}}(\text{C}_6\text{H}_6)^{\text{S}}$ could be observed.²⁸ The splittings measured are lower by about 30% than for the normal $(\text{C}_6\text{H}_6)_2$ isotopologue. In the calculations we investigated both mixed dimers with C_6D_6 in the cap and with C_6D_6 in the stem. Since it is basically the sixfold hindered rotation of the stem that causes the observed 1:2:1 tunneling splitting pattern, one would expect the same splittings as in $(\text{C}_6\text{H}_6)_2$ when C_6D_6 is in the cap. The only parameters we needed to change in our calculations are the reduced mass μ_{AB} and the monomer rotational constants, B for the cap and C for the stem. Another parameter that should possibly be changed is the fixed value of R used in the model. Practically no change in R is expected when C_6D_6 is in the cap, because the cap C–D groups are not involved in the intermolecular bond. A small reduction of R might occur when C_6D_6 is in the stem, because in that case one of the stem C–D groups sticks into the π -electron cloud of the cap and the C–D bond is slightly shorter than the C–H bond. In Tables 8 and 9 we present the results calculated with the same value $R = 9.42a_0$ as used for the homodimer $(\text{C}_6\text{H}_6)_2$; the effects of changes in R were estimated by comparison of these results with data calculated for other values of R . The splittings extracted from the experimental data in Table 3 are also included in Table 8.

The results show, as expected, that the reduction of the quartet tunneling splittings is larger when C_6D_6 is the stem than when it is the cap. Also with C_6D_6 in the cap it is

Table 8 Separations between consecutive lines in the tunneling quartets (in kHz) calculated for the mixed $(\text{C}_6\text{D}_6)^{\text{C}}(\text{C}_6\text{H}_6)^{\text{S}}$ dimer with C_6D_6 in the cap on the potential of Fig. 3 for $R = 9.42a_0$ and observed in FTMW spectra. The measured splittings are less accurate than for $(\text{C}_6\text{H}_6)_2$ because of the additional line broadening from the deuterium nuclear quadrupole coupling. For $p_{\text{tilt}} = + \leftarrow +$ transitions the quartet of lines with increasing transition frequencies corresponds to $k_{\text{stem}} = 3, 2, 1, 0$, for $p_{\text{tilt}} = - \leftarrow -$ transitions to $k_{\text{stem}} = 0, 1, 2, 3$

$J', K' \leftarrow J, K$	$p_{\text{tilt}} = +$		$p_{\text{tilt}} = -$		Measured				
5, 0 \leftarrow 4, 0	36.6	72.9	36.4	37.2	74.6	37.4	29.5	58.5	27.7
5, 1 \leftarrow 4, 1	36.7	73.1	36.5	37.3	74.8	37.5	32.3	70.5	32.0
6, 2 \leftarrow 5, 2	43.0	85.9	42.8	43.8	87.9	44.0	52.1	101.1	49.4
7, 0 \leftarrow 6, 0	48.0	95.7	47.7	48.9	97.9	49.1	50.8	96.1	50.9
7, 1 \leftarrow 6, 1	48.1	96.0	47.9	49.0	98.2	49.2	51.6	103.1	51.1
7, 2 \leftarrow 6, 2	48.5	96.7	48.3	49.4	99.0	49.6	58.4	116.6	60.8
8, 1 \leftarrow 7, 1	52.7	105.3	52.5	53.8	107.7	54.0	59.4	116.8	61.0
9, 1 \leftarrow 8, 1	56.6	113.0	56.4	57.7	115.6	57.9	78.6	121.9	79.2



Table 9 Same results as in Table 8 calculated for the mixed $(\text{C}_6\text{H}_6)^{\text{C}}(\text{C}_6\text{D}_6)^{\text{S}}$ dimer with C_6D_6 in the stem

$J', K' \leftarrow J, K$	$p_{\text{tilt}} = +$			$p_{\text{tilt}} = -$		
5, 0 \leftarrow 4, 0	21.5	43.0	21.5	21.9	43.8	21.9
5, 1 \leftarrow 4, 1	21.6	43.2	21.6	22.0	44.0	22.0
6, 2 \leftarrow 5, 2	25.2	50.3	25.1	25.6	51.2	25.6
7, 0 \leftarrow 6, 0	27.5	54.9	27.4	27.9	55.9	28.0
7, 1 \leftarrow 6, 1	27.6	55.1	27.5	28.0	56.1	28.1
7, 2 \leftarrow 6, 2	27.9	55.8	27.9	28.4	56.8	28.4
8, 1 \leftarrow 7, 1	29.7	59.3	29.6	30.2	60.5	30.3
9, 1 \leftarrow 8, 1	31.2	62.3	31.1	31.7	63.5	31.8

substantial, however, which implies that not only the stem hindered rotation is involved in the tunneling process but also the cap tilt motion. As discussed above, these motions are coupled through the potential energy surface as well as by kinetic coupling between the monomer angular momenta. The splittings in Table 8 calculated for the mixed dimer with C_6D_6 in the cap are reduced with respect to the $(\text{C}_6\text{H}_6)_2$ data by about 25%, and those in Table 9 calculated for the mixed dimer with C_6D_6 in the stem by about a factor of 2. Since the corresponding reduction in the experimental splittings is about 30%, best agreement with the FTMW data is obtained for the dimer with C_6D_6 in the cap. This is another confirmation of the earlier observation²⁸ that only the mixed dimer with C_6D_6 in the cap survives in the molecular beam with neon as the carrier gas.

A further reduction of the splittings may originate from the effect of isotope substitution on the intermolecular bond length R . As already mentioned, we expect that the average value of R in $(\text{C}_6\text{H}_6)_2$ will practically not change when the C_6H_6 monomer in the cap is replaced by C_6D_6 . A slight decrease of R will probably occur when the stem monomer is replaced. Such a small decrease of R will lead to higher barriers in the potential surface and further reduce the (already too small) tunneling splittings for the dimer with C_6D_6 in the stem.

B. Intensities

The four lines in the quartets for each of the rotational transitions in the FTMW spectrum show a nearly constant intensity ratio of 3:2:2:1, with deviations of about 20% and independent of K being even or odd. The lowest-frequency component of each quartet has the largest intensity. These intensities are determined by three factors: the nuclear spin statistical weights of the levels involved in the transitions, the populations of the initial levels, and the transition line strengths. Two ingredients are needed to calculate the relative line strengths of the transitions between the levels with $k_{\text{stem}} = 0, 1, 2, 3$ that produce the four lines in the observed quartets: the wave functions of the initial and final states and the dipole function. The wave functions were computed in our 2D model with the inclusion of overall rotation. Two important contributions to the dipole function are given above. Eqn (5) and (6) describe the first and dominant contribution consisting of the dipole induced on each monomer by the quadrupole moment of the other monomer. This long range contribution,

proportional to R^{-4} , is independent of the stem rotation angle γ_{B} , so we also constructed a short range contribution described by eqn (9) that depends on both β_{A} and γ_{B} .

Numerical results are not given, because the calculated line strengths depend on the parameters used in the dipole function and their absolute values are not very interesting. It is the relative intensities of the four lines in the tunneling quartets associated with $k_{\text{stem}} = 0, 1, 2, 3$ that we are interested in. It follows from our calculations that the transition line strengths calculated for these four lines are practically equal, independently of the values of the parameters used in the long and short range dipole functions. So the intensity ratio of 3:2:2:1 of the lines in the quartets observed in the FTMW spectrum must be due to the nuclear spin statistical weights and/or the populations of the initial levels.

At higher temperature the Boltzmann factors of the different nuclear spin species of the benzene dimer are nearly equal and their relative populations are completely determined by the nuclear spin statistical weights. The spin weights of different levels follow directly from the irreps of the molecular symmetry (or permutation-inversion) group to which these levels belong.^{12,23,24} The molecular symmetry group of the TT equilibrium structure is $C_s(\text{M})$. Tunneling between equivalent minima increases the order of this group and the full cluster tunneling (FCT) group,⁴⁵ *i.e.*, the molecular symmetry group of the benzene dimer in which all monomer rotations are “feasible”, is G_{576} . Tunneling is called feasible when it produces measurable level splittings, which in the benzene dimer does probably not apply to cap turnover and cap–stem interchange tunneling. In ref. 12 and in the present paper it was shown that all other internal motions—cap rotation tunneling, tilt tunneling, and stem rotation tunneling—are feasible. This yields G_{144} as the molecular symmetry group. The rotational constants of benzene are rather small, so the temperature at which this statistical limit is reached is relatively low. Attempts to explain the observed intensity ratio by just using the G_{144} nuclear spin weights of the dimer levels with $k_{\text{stem}} = 0, 1, 2, 3$ were not successful, however.

There are several indications that the populations of the levels of dimers in molecular beams are determined by the process of dimer formation and equilibration in the expansion region. It was found, for example, for the $\text{H}_2\text{O}-\text{H}_2$ complex^{46–48} that probably all four nuclear spin species with *para/ortho* H_2O and *para/ortho* H_2 are formed in first instance by $\text{H}_2\text{O}-\text{H}_2$ collisions, but that only the two dimer species with *ortho* H_2 could be finally detected in the beam. This could be explained by the kinetics that takes place in the expansion part of the beam, where the complex is formed. This kinetics is determined by the dissociation energies D_0 of the four different (*p-p*, *p-o*, *o-p*, *o-o*) dimer species, relative to the corresponding monomers. The D_0 values of the two species with *ortho* H_2 are larger by more than 20 cm^{-1} than the D_0 values of the dimers with *para* H_2 .⁴⁶ It was assumed that during the formation stage of the dimers they are first formed statistically, depending on the monomer densities in the beam and the monomer nuclear spin weights, but that additional collisions shift the



populations more or less to the equilibrium of the $p\text{H}_2/o\text{H}_2$ exchange reaction. Since $\text{H}_2\text{O}-o\text{H}_2$ is more stable than $\text{H}_2\text{O}-p\text{H}_2$ by more than 20 cm^{-1} and the beam temperature was about 5 K ; this strongly increases the populations of the (observed) $\text{H}_2\text{O}-o\text{H}_2$ complexes relative to the (not observed) $\text{H}_2\text{O}-p\text{H}_2$ complexes.

For the benzene dimer the energy differences between the different nuclear spin species are much smaller, but also the ultimate beam temperature is lower, about 2 K . There are strong indications that these small energy differences play an important role in determining the populations of the different species. It was found,²⁸ for example, for the mixed $\text{C}_6\text{D}_6\text{-C}_6\text{H}_6$ dimer that (except in helium beams) only the species with C_6D_6 in the cap survives in the beam. The explanation²⁸ was similar to the explanation for the $\text{H}_2\text{O}-\text{H}_2$ complex;^{46–48} it was also based on the assumption that both the dimers with C_6D_6 in the cap or C_6D_6 in the stem are initially formed in the collision region of the beam, and that an exchange reaction takes place which is driven by the small difference in D_0 between these two species (estimated to be 2 cm^{-1} (ref. 28)).

Hence, it is probable that the differences in D_0 values of $(\text{C}_6\text{H}_6)_2$ for the different k_{stem} and k_{cap} levels will affect the populations of these levels in the dimer formation/equilibration stage. The C_6H_6 monomer has different species with $k = 0, 1, 2$, and 3 , with ground state rotational energies of $0, 0.28, 0.76$, and 1.42 cm^{-1} . The D_0 values that determine the stability of the different dimer species depend on both k_{stem} and k_{cap} . Actually, the value of k_{stem} is much more relevant for dimer stability than the value of k_{cap} , because the cap shows nearly unhindered rotation in the dimer, and the energy differences between dimer levels with different k_{cap} ¹² almost compensate the energy differences between the corresponding free monomer rotational levels. The energy differences between the dimer stem rotation tunneling levels with different $k_{\text{stem}} = 0, 1, 2, 3$ are only about 1 MHz , see Table 6, so the difference in the corresponding monomer energies is fully reflected in the D_0 values. Hence, the states with $k_{\text{stem}} = 3$ are more stable than the states with $k_{\text{stem}} = 0$ by about 1.42 cm^{-1} , and the states with $k_{\text{stem}} = 2$ and 1 are more stable by about 0.76 and 0.28 cm^{-1} . Therefore, the states with $k_{\text{stem}} = 3$ are mostly populated, and the populations decrease for $k_{\text{stem}} = 2, 1$, and 0 . If the relative populations were given by Boltzmann factors at $T = 2\text{ K}$ they would be $2.8, 1.7, 1.2, 1.0$ for $k_{\text{stem}} = 3, 2, 1, 0$. The populations of the tilt tunneling levels probably obey the same rule. Tilt levels with $p_{\text{tilt}} = -$ are higher than the levels with $p_{\text{tilt}} = +$ by about 1 cm^{-1} ,¹² which will cause the lower levels with $p_{\text{tilt}} = +$ to be more populated by about a factor of 2 .

The molecular symmetry group $D_{6h}(\text{M})$ of the C_6H_6 monomer is given in Table A-11 of ref. 45. The nuclear spin weights are given in Table 10. The weights for the monomer levels with $k \pmod 6 = 0$ and 3 alternate between the A_1, A_2 and B_1, B_2 values for even and odd rotational angular momentum j . If we assume that the monomer angular momenta are completely quenched in the dimer and average the weights over the values in Table 10 for even and odd j , the dimer levels with $k_{\text{stem}} = 0, 1, 2, 3$ correspond to monomer levels with weights $5, 11, 9, 7$,

Table 10 Nuclear spin statistical weights in C_6H_6 and C_6D_6 monomers, symmetry group $D_{6h}(\text{M})$

Rotational symmetry	Parity	Quantum numbers	Statistical weight	
			C_6H_6	C_6D_6
A_{1g}, A_{2g}	+	$k \pmod 6 = 0$	7, 3	92, 38
E_{1g}	–	$k \pmod 6 = \pm 1$	11	116
E_{2g}	+	$k \pmod 6 = \pm 2$	9	124
B_{1g}, B_{2g}	–	$k \pmod 6 = 3^a$	13, 1	73, 46

^a With basis functions $(|+3\rangle \pm |-3\rangle)/\sqrt{2}$; B_{1g}/B_{2g} functions have $+/-$ signs for even j , $-/+$ signs for odd j .

respectively. At this stage, let us remind the reader of our assignment of the lines in the quartets: for $p_{\text{tilt}} = +$ the four lines correspond in increasing frequency order to $k_{\text{stem}} = 3, 2, 1, 0$, for $p_{\text{tilt}} = -$ to $k_{\text{stem}} = 0, 1, 2, 3$. Would we assume that only the lower tilt levels with $p_{\text{tilt}} = +$ are occupied and that all cap levels with $k_{\text{cap}} = 0, 1, 2, 3$ contribute equally, and neglect the preferential formation of the dimer in its levels with higher k_{stem} , the intensity ratio of the four lines in the stem rotation tunneling quartets would be $7:9:11:5$, i.e., $1.4:1.8:2.2:1$. If we take into account that the dimer is preferentially formed in its levels with higher k_{stem} and $p_{\text{tilt}} = +$, the lower frequency lines in the quartets (especially the first line with $k_{\text{stem}} = 3$) become more intense. Thus, the experimentally observed intensity ratio of about $3:2:2:1$ is rationalized.

VI. Summary and conclusions

In our combined theoretical and microwave spectroscopic study, we unravel the internal dynamics of the benzene dimer, a benchmark system for studying dispersion forces. We observe a characteristic quartet tunneling splitting pattern in our microwave spectra for two benzene dimer isotopologues, the homodimer $(\text{C}_6\text{H}_6)_2$ and the mixed dimer $(\text{C}_6\text{D}_6)^{\text{C}}(\text{C}_6\text{H}_6)^{\text{S}}$. Through the use of a reduced-dimensionality approach that includes two of the six intermolecular coordinates and the overall rotation of the dimer, we can assign these splittings to a concerted tunneling motion that involves stem hindered rotation and tilt tunneling. The 2D potential surface used in this approach is a cut of the 6D *ab initio* intermolecular potential for the benzene dimer from ref. 12, so no fitting of the potential to the experimental data is involved. As in 1D model calculations for stem hindered rotation only^{10,12} the calculated levels occur in quartets with a $1:2:1$ ratio of the splittings between consecutive levels typical for tunneling in a V_6 potential. However, the 2D approach combining stem rotation with tilt tunneling and overall rotation of the complex is essential to obtain realistic splittings that are in semi-quantitative agreement with the measured data. Moreover, our model predicts the increase of the splittings with J and the smaller increase with K , in qualitative agreement with the experimental observations. Given the simplifications made in the reduced-dimensionality model, we could not have expected better.

For $(\text{C}_6\text{H}_6)_2$, the experimentally determined intensities of the four quartet lines show a $3:2:2:1$ ratio that does not agree



with the 1.4:1.8:2.2:1 ratio obtained from dimer nuclear spin statistical weights only. The experimentally observed intensities can be explained if the populations of different dimer nuclear spin species in the beam are also taken into account. These populations are determined by the benzene monomer nuclear spin weights and by small differences in the dissociation energies D_0 of different dimer nuclear spin species that play a role in the dimer formation and equilibration process in the molecular beam close to the nozzle. The same process has already been shown to explain the populations of different nuclear spin species for other weakly bound complexes^{46–48} and the preferential formation of mixed benzene dimers with the $(\text{C}_6\text{D}_6)^{\text{C}}(\text{C}_6\text{H}_6)^{\text{S}}$ structure.²⁸

The concerted stem rotation and tilt tunneling motion also explain the observed reduction of the tunneling splittings for the mixed dimer $(\text{C}_6\text{D}_6)^{\text{C}}(\text{C}_6\text{H}_6)^{\text{S}}$ as compared to $(\text{C}_6\text{H}_6)_2$. This reduction was surprising at first glance, since the splittings were assigned to be due to stem rotation tunneling and the C_6D_6 monomer forms the cap of the TT structure. However, the combined process of stem rotation and tilt tunneling is influenced by a change of the cap's moment of inertia. Our theoretical approach, in which the two internal motions are coupled both by the potential and by kinetic coupling, quantitatively reproduces the observed reduction of the tunneling splittings. Summarizing, we conclude that our model has indeed uncovered the mechanism that causes the tunneling splittings found in the FTMW spectra of the benzene dimer.

Acknowledgements

We thank Prof. Gerrit Groenenboom for his useful comments on the manuscript. Ad van der Avoird thanks the Alexander von Humboldt foundation for a Humboldt Senior Research Award. P. R. Bunker thanks the Fritz-Haber-Institut for continuing hospitality. Melanie Schnell thanks the Fonds der Chemischen Industrie for Financial Support *via* a Dozentenstipendium, and Jens-Uwe Grabow acknowledges financial support from the Land Niedersachsen and the Deutsche Forschungsgemeinschaft.

References

- M. L. Waters, *Curr. Opin. Chem. Biol.*, 2002, **6**, 736–741.
- L. Serrano, M. Bycroft and A. R. Fersht, *J. Mol. Biol.*, 1991, **218**, 465–475.
- S. Burley and G. Petsko, *Science*, 1985, **229**, 23–28.
- V. R. Cooper, T. Thonhauser, A. Puzder, E. Schröder, B. I. Lundqvist and D. C. Langreth, *J. Am. Chem. Soc.*, 2008, **130**, 1304–1308.
- X. Huang, D. Shullenberger and E. Long, *Biochem. Biophys. Res. Commun.*, 1994, **198**, 712–719.
- L. R. Rutledge, L. S. Campbell-Verduyn and S. D. Wetmore, *Chem. Phys. Lett.*, 2007, **444**, 167–175.
- K. C. Janda, J. C. Hemminger, J. S. Winn, S. E. Novick, S. J. Harris and W. Klemperer, *J. Chem. Phys.*, 1975, **63**, 1419–1421.
- B. F. Henson, G. V. Hartland, V. A. Ventura and P. M. Felker, *J. Chem. Phys.*, 1992, **97**, 2189–2208.
- E. Arunan and H. S. Gutowsky, *J. Chem. Phys.*, 1993, **98**, 4294–4296.
- V. Špirko, O. Engkvist, P. Soldan, H. L. Selzle and E. W. Schlag, *J. Chem. Phys.*, 1999, **111**, 572.
- R. Podeszwa, R. Bukowski and K. Szalewicz, *J. Phys. Chem. A*, 2006, **110**, 10345–10354.
- A. van der Avoird, R. Podeszwa, K. Szalewicz, C. Leforestier, R. van Harreveld, P. R. Bunker, M. Schnell, G. von Helden and G. Meijer, *Phys. Chem. Chem. Phys.*, 2010, **12**, 8219–8240.
- E. H. T. Olthof, A. van der Avoird and P. E. S. Wormer, *J. Chem. Phys.*, 1994, **101**, 8430–8442.
- C. Leforestier, L. B. Braly, K. Liu, M. J. Elrod and R. J. Saykally, *J. Chem. Phys.*, 1997, **106**, 8527.
- H. Chen, S. Liu and J. C. Light, *J. Chem. Phys.*, 1999, **110**, 168.
- G. C. Groenenboom, P. E. S. Wormer, A. van der Avoird, E. M. Mas, R. Bukowski and K. Szalewicz, *J. Chem. Phys.*, 2000, **113**, 6702–6715.
- R. S. Fellers, L. B. Braly, R. J. Saykally and C. Leforestier, *J. Chem. Phys.*, 1999, **110**, 6306.
- R. S. Fellers, C. Leforestier, L. B. Braly, M. G. Brown and R. J. Saykally, *Science*, 1999, **284**, 945–948.
- N. Goldman, R. Fellers, M. Brown, L. Braly, C. Keoshian, C. Leforestier and R. Saykally, *J. Chem. Phys.*, 2002, **116**, 10148–10163.
- R. Bukowski, K. Szalewicz, G. C. Groenenboom and A. van der Avoird, *Science*, 2007, **315**, 1249–1252.
- R. Bukowski, K. Szalewicz, G. C. Groenenboom and A. van der Avoird, *J. Chem. Phys.*, 2008, **128**, 094314.
- W. Cencek, K. Szalewicz, C. Leforestier, R. van Harreveld and A. van der Avoird, *Phys. Chem. Chem. Phys.*, 2008, **10**, 4716.
- J. A. Odutola, D. L. Alvis, C. W. Curtis and T. R. Dyke, *Mol. Phys.*, 1981, **42**, 267.
- R. Schmied and K. K. Lehmann, *J. Mol. Spectrosc.*, 2004, **226**, 201.
- M. Schnell, U. Erlekm, P. R. Bunker, G. von Helden, J.-U. Grabow, G. Meijer and A. van der Avoird, *Angew. Chem., Int. Ed.*, 2013, **52**, DOI: 10.1002/anie.201300653.
- D. Banser, M. Schnell, J.-U. Grabow, E. J. Cocinero, A. Lesarri and J. L. Alonso, *Angew. Chem., Int. Ed.*, 2005, **44**, 6311–6315.
- J.-U. Grabow, W. Stahl and H. Dreizler, *Rev. Sci. Instrum.*, 1996, **67**, 4072–4084.
- U. Erlekm, M. Frankowski, G. von Helden and G. Meijer, *Phys. Chem. Chem. Phys.*, 2007, **9**, 3786–3789.
- M. Schnell, D. Banser and J.-U. Grabow, *Rev. Sci. Instrum.*, 2004, **75**, 2111–2115.
- J. M. L. J. Reinartz and A. Dymanus, *Chem. Phys. Lett.*, 1974, **24**, 346–351.
- F. Filsinger, K. Wohlfart, M. Schnell, J.-U. Grabow and J. Küpper, *Phys. Chem. Chem. Phys.*, 2008, **10**, 666–673.
- W. Jarzeba, V. V. Matyilitsky, C. Riehn and B. Brutschy, *Chem. Phys. Lett.*, 2003, **368**, 680–689.
- D. T. Colbert and W. H. Miller, *J. Chem. Phys.*, 1992, **96**, 1982.



- 34 G. C. Groenenboom and D. T. Colbert, *J. Chem. Phys.*, 1993, **99**, 9681–9696.
- 35 Actually, there are levels with $k_{\text{stem}} = 3^{\pm}$; the wave functions with $k_{\text{stem}} = 3 \equiv 3^+$ are symmetric combinations of the basis functions with $k_B = \pm 3, \pm 9$, etc.; they belong to the tunneling quartets. Wave functions with $k_{\text{stem}} = 3^-$ are anti-symmetric combinations of these basis functions; these states are vibrationally excited in the hindered stem rotation potential and much higher in energy.
- 36 D. M. Brink and G. R. Satchler, *Angular Momentum*, Clarendon, Oxford, 3rd edn, 1993.
- 37 A. van der Avoird, P. E. S. Wormer and R. Moszynski, *Chem. Rev.*, 1994, **94**, 1931–1974.
- 38 M. R. Battaglia, A. D. Buckingham and J. Williams, *Chem. Phys. Lett.*, 1981, **78**, 421.
- 39 G. R. Alms, A. K. Burnham and W. H. Flygare, *J. Chem. Phys.*, 1975, **63**, 3321.
- 40 A. Proutiere and M. Camail, *Mol. Phys.*, 1975, **29**, 1473.
- 41 T. Brupbacher and A. Bauder, *J. Chem. Phys.*, 1993, **99**, 9394.
- 42 E. Arunan, T. Emilsson, H. S. Gutowsky, G. T. Fraser, G. de Olivera and C. E. Dykstra, *J. Chem. Phys.*, 2002, **117**, 9766.
- 43 C. H. Townes and A. L. Schawlow, *Microwave Spectroscopy*, Dover Publications, New York, 1975.
- 44 P. Hobza, H. L. Selzle and E. W. Schlag, *J. Chem. Phys.*, 1990, **93**, 5893–5897.
- 45 P. R. Bunker and P. Jensen, *Molecular Symmetry and Spectroscopy*, NRC Research Press, Ottawa, Ontario, Canada, 2nd edn, 1998.
- 46 A. van der Avoird and D. J. Nesbitt, *J. Chem. Phys.*, 2011, **134**, 044314.
- 47 A. van der Avoird, Y. Scribano, A. Faure, M. J. Weida, J. R. Fair and D. J. Nesbitt, *Chem. Phys.*, 2012, **399**, 28–38.
- 48 M. P. Ziemkiewicz, C. Pluetzer, D. J. Nesbitt, Y. Scribano, A. Faure and A. van der Avoird, *J. Chem. Phys.*, 2012, **137**, 084301.

