


Cite this: *RSC Adv.*, 2023, 13, 31641

Current trends in luminescence-based assessment of apoptosis

Cristian Moldovan,^{ab} Anca Onaciu,^a Valentin Toma,^a Raluca A. Munteanu,^a Diana Gulei,^a Alin I. Moldovan,^a Gabriela F. Stiufiuc,^c Richard I. Feder,^a Diana Cenariu,^a Cristina A. Iuga^{ad} and Rares I. Stiufiuc^{id} *^{abe}

Apoptosis, the most extensively studied type of cell death, is known to play a crucial role in numerous processes such as elimination of unwanted cells or cellular debris, growth, control of the immune system, and prevention of malignancies. Defective regulation of apoptosis can trigger various diseases and disorders including cancer, neurological conditions, autoimmune diseases and developmental disorders. Knowing the nuances of the cell death type induced by a compound can help decipher which therapy is more effective for specific diseases. The detection of apoptotic cells using classic methods has brought significant contribution over the years, but innovative methods are quickly emerging and allow more in-depth understanding of the mechanisms, aside from a simple quantification. Due to increased sensitivity, time efficiency, pathway specificity and negligible cytotoxicity, these innovative approaches have great potential for both *in vitro* and *in vivo* studies. This review aims to shed light on the importance of developing and using novel nanoscale methods as an alternative to the classic apoptosis detection techniques.

Received 25th August 2023
Accepted 18th October 2023

DOI: 10.1039/d3ra05809c

rsc.li/rsc-advances

Introduction

From the very beginning, cell death identification was and continues to be an important approach in the field of drug discovery and molecular biology.¹ Many of the classical techniques rely on fluorescent probes in order to point out regulated cell death (RCD) mechanisms by targeting specific cellular markers.² At the same time, the development of new dyes or probes for cell structures and organelles examination has allowed the indirect association of cell morphology and cell death. These modifications are mainly explored through microscopy imaging and usually only offer a qualitative analysis of cellular behaviour.

On the other hand, for the generation of statistically significant data regarding the incidence of RCD and/or abundance of RCD specific markers, other approaches that allow quantitative analysis are used. In this regard, RCD is monitored using

techniques such as: nuclear magnetic resonance,³ flow cytometry,⁴ imaging approaches,^{5,6} phototherapy⁷ or ultrasound frequency evaluation.⁸ Additionally, there are other analytical procedures for performing molecular biology assays that are suitable for cell death evaluation⁹ like toxicology tests,¹⁰ viability assays¹¹ and PCR assays.^{12,13} These involve the analysis of specific genes, RNA or proteins, as valuable indicators of cell death. In this case, many of the techniques are engaging spectrophotometry. Moreover, mathematical models are offering new perspectives in cell death analysis especially regarding the most likely cell death pathway to be engaged in specific conditions.^{14,15} Qualitative and quantitative examinations of cell death synergize to offer an accurate and valid result.

According to the recommendations of the Nomenclature Committee on Cell Death, in 2018, a novel classification for the RCD processes based on mechanistic and other important aspects was established.¹⁶ Cell death categories are described depending on the signal molecules involved in and are named as follows: intrinsic apoptosis, extrinsic apoptosis, mitochondrial permeability transition driven necrosis, necroptosis, ferroptosis, pyroptosis, parthanatos, entotic cell death, netotic cell death, lysosome-dependent cell death, autophagy-dependent cell death, non-lethal processes. This review aims to highlight the current and most innovative methods for the detection of different apoptosis pathways *in vitro* and *in vivo*, while briefly summarizing the most commonly used techniques, their drawbacks and the need of implementing new and more advanced approaches.

^aMedfuture-Research Center for Advanced Medicine, "Iuliu Hatieganu" University of Medicine and Pharmacy, Marinescu 23/Louis Pasteur Street No. 4-6, 400337 Cluj-Napoca, Romania. E-mail: rares.stiufiuc@umfcluj.ro; Tel: +40-0726-34-02-78

^bDepartment of Pharmaceutical Physics & Biophysics, Faculty of Pharmacy, "Iuliu Hatieganu" University of Medicine and Pharmacy, Louis Pasteur Street No. 4-6, 400349 Cluj-Napoca, Romania

^cFaculty of Physics, "Babes Bolyai" University, Mihail Kogalniceanu Street No. 1, 400084 Cluj-Napoca, Romania

^dPharmaceutical Analysis, Faculty of Pharmacy, "Iuliu Hatieganu" University of Medicine and Pharmacy, Louis Pasteur Street 6, Cluj-Napoca, 400349, Romania

^eTRANSCEND Research Center, Regional Institute of Oncology, 700483 Iasi, Romania



Apoptosis is a physiological process described as an active mechanism involving cell shrinkage, membrane blebbing, vacuolated cytoplasm, chromatin fragmentation and the production of apoptotic bodies.¹⁷ The main apoptosis signalling pathways are well described and can be seen in Fig. 1. This phenomenon happens relatively fast and its phases are difficult to capture. Beyond that, apoptotic bodies, if not cleared by phagocytes, can proceed to secondary necrosis¹⁸ and may

influence neighbouring cell populations by inducing inflammation and/or cellular stress due to the release of intracellular contents. Even though secondary necrosis is not a RCD mechanism itself, it shares similar morphological features to apoptotic¹⁹ and necrotic cells and as a consequence, it can be challenging to decipher the exact cell death pathway. Moreover, other RCD mechanisms also resemble apoptosis when it comes to morphology and/or expression pattern of certain molecules

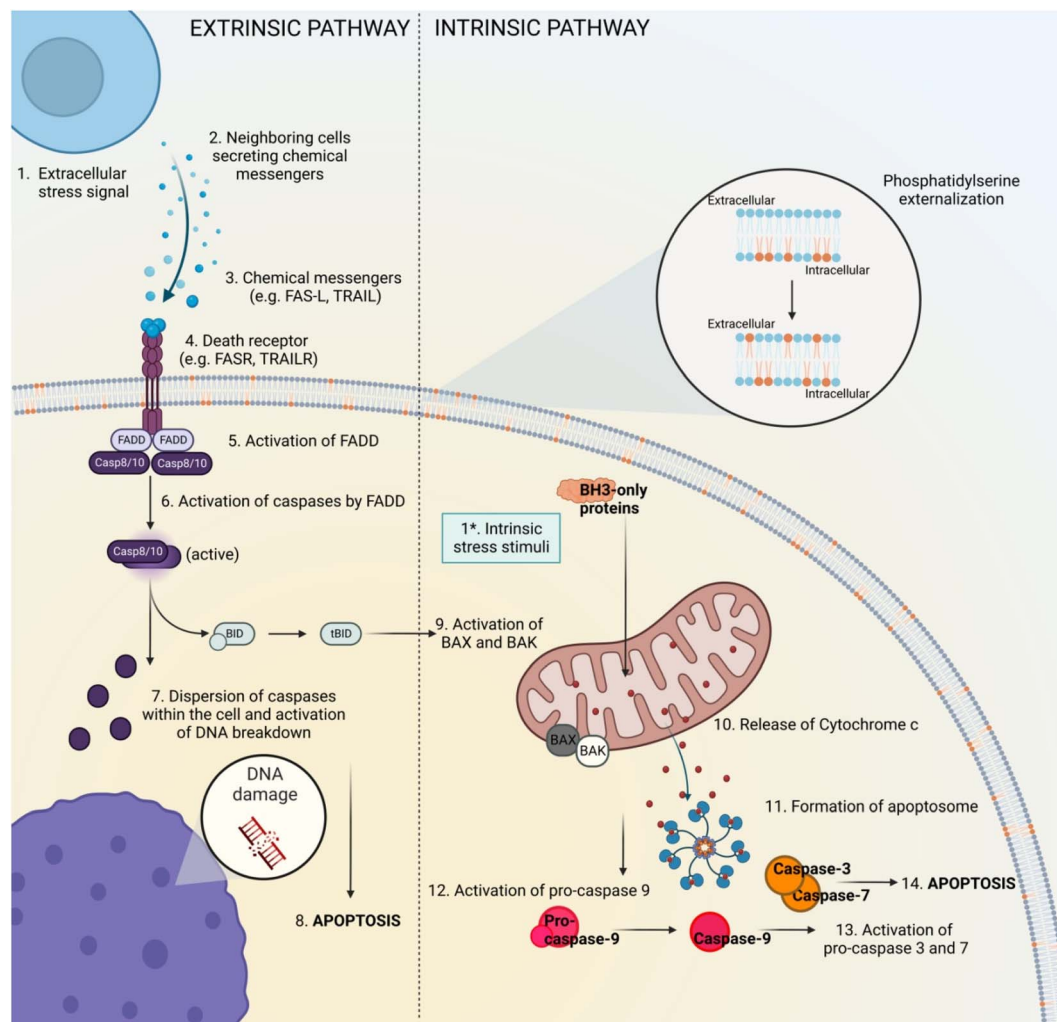


Fig. 1 Schematic representation of apoptosis. There are two main pathways that conduct to the installation of programmed cell death: extrinsic pathway and intrinsic pathway. The extrinsic one starts with a stress stimuli outside of cell (1) that determines the secretion and binding of specific ligands to death receptors. The chemical messengers can be secreted by neighbouring cells (2) and are often represented by FAS and TRAIL (3) that bind their specific receptors on the targeted cell (e.g. FASR, TRAILR) (4). The ligand–receptor interaction determines modification within the intracellular domain which activates FADD protein inside the cell (5). Activated FADD interacts with Pro-caspase-8 and pro-caspase-10, causing their activation through cleavage of proteins that keep them inactive (6). The active caspases (Caspase 8 and Caspase 10) are further dispersed within the cell cytoplasm and trigger the activation of specific molecules, including proteins involved in DNA breakdown (7), finally causing the installation of apoptosis (8). Activated Caspase 8 and Caspase 10 are also interacting with BID that is transformed in tBID (9). tBID moves into the mitochondria causing the activation of BAX and BAK (9) – this step is also the intersection point between the extrinsic pathway and the intrinsic one. The last ones are favouring the installation of mitochondrial outer membrane permeability (MOMP) that is allowing the release of cytochrome C from the mitochondria into the cytoplasm (10). The next steps involve the formation of complex of proteins termed “apoptosome” (11), complex that is managing the activation of Pro-caspase-9 (12). Activated Caspase-9 is triggering the activation of Caspase-3 and Caspase-7 (among other functions) (13), enzymes that begin the process of cellular materials breakdown that finally concludes to installation of apoptosis (14). The extrinsic pathway is triggered by an internal stress stimulus (e.g. DNA damage, hypoxia) (1*) which activates a class of proteins called BH3-only proteins (2*). Pro-apoptotic BH3-only proteins are managing the same activation of BAX and BAK, point which represents the intersection between the extrinsic and intrinsic pathway. This figure was created using <https://www.biorender.com/>.



involved in cell death establishment. This suggests the need of researchers to adapt their studies to the quickly developing field of cell death research by using novel and innovative techniques of RCD detection. Some of these methods, the targeted biomarkers correlated to the stages of apoptosis are presented in Table 1.

Classic methods for apoptosis detection and their main drawbacks

As previously mentioned, many techniques for the detection of apoptosis were developed, many of which showed impressive results *in vitro*. One of the most common approaches is the use of fluorescent dyes that specifically bind to target molecules associated to apoptosis pathways. Microscopy or spectroscopy techniques are used to visualize morphological changes and/or quantify labelled biomarkers. However, through intensive research, new distinct mechanisms of cell death have lately been identified and many of the classic dyes (PI, DAPI, annexin V) lack an acceptable specificity or selectivity for their pathways. As a result, they may enter/label dead or dying cells, but the researcher cannot accurately discriminate one cell death pathway from another. For instance, DAPI and PI cannot distinguish between early apoptotic and necrotic cells leading to potential false-positive results when used to detect apoptosis. Moreover, annexin V often uses expensive recombinant proteins which can affect cell activity or introduce artifacts. The lack of real-time monitoring given by the fact the most classic methods use endpoint measurements, makes it difficult to study cell dynamics over time, which is necessary for several research issues. These are just a few drawbacks, which can be overcome with the aid of other molecular techniques. Even though this strategy can be time-consuming, it continues to be a good method for validating the results or for providing more in-depth answers.

For the *in vitro* apoptosis detection, different methods are commonly used: microscopy, biochemical techniques, spectroscopy, electrochemistry and microfluidics.⁹⁵ Among the first procedures, time-lapse electron microscopy was applied for morphological hallmarks monitorization of the cells.⁹⁶

On the other hand, *in vivo* detection of apoptosis has additional limitations which makes it more challenging when it comes to designing fluorescent probes. Most of these are related to the luminescent properties of the probe, interaction of the light with different tissues or biocompatibility. Notably, scattering of both the excitation or the emitted light by the biological tissues can drastically impact the resolution or intensity of the signal. Moreover, the tissue penetration depth is highly dependent to the wavelength of the light used. One reason for this is that tissue molecules interact distinctly with different wavelengths when it comes to the magnitude of scattering or absorption events. Hence, longer wavelength light has lower energy, which besides the fact that it is less likely to be scattered or absorbed, also has the advantage of a reduced photobleaching effect on the fluorescent probe used. Other difficulties that need to be overcome in order to design effective

fluorescent probes for apoptosis detection *in vivo* include the low signal to noise ratio given by the autofluorescence of the complex biological environments; cytotoxicity or other events triggered by the interaction of the exogenous probe with the cells; biological barriers (such as blood-brain-barrier) which sometimes need to be worked through by the fluorescent probe to analyse specific tissues. Another aspect that needs to be considered is that the utilization of *in vivo* research for the detection of apoptosis may give rise to ethical considerations in certain instances, as well as provide technical obstacles in terms of sample acquisition and observation of events within living organisms.

From a biochemical point of view, some specific proteins and genes that are activated during apoptosis are recognized as key effectors⁹⁷ and can help investigate the cell death pathway with increased accuracy. Besides the simple quantification of these effectors, which remains a strong technique, the localization of particular molecules, such as the externalization of PS or cytochrome c release from the mitochondria, is also an appropriate method. Caspases are commonly studied key effectors of apoptosis. Their activity can be quantified by using fluorogenic caspase substrates *via* flow cytometry.⁹⁸ On the other hand, cytosolic cytochrome c is often assessed *via* fluorescence microscopy^{52,99} or flow cytometry^{47,100} for apoptosis detection and, other biomarkers, such as oligonucleosomal multimers of 180–200 bp, or the ratio of proapoptotic to anti-apoptotic proteins (ex. Bcl-2/Bax) can be quantified with the help of gel-based assays.^{101–103}

Fluorescent dyes

Detection approaches are dependent on the fluorescence property of the probes used for apoptosis specific markers labelling engaging microscopy, flow cytometry or even genomic methods for more detailed investigations. In contrast, many widely used fluorescent dyes may exhibit limited specificity, since they have the potential to attach to other cellular structures or processes, hence resulting in potential instances of false positive results. The most used dye is annexin V conjugated to fluorescein isothiocyanate (FITC) which can detect middle to late stage apoptosis by binding to the exposed phosphatidylserine molecules on cell membrane.¹⁰⁴ However, integrating these dyes with complementary techniques can mitigate some of the limitations. In many protocols, annexin V-FITC is used in combination with propidium iodide (PI) which discriminates between live and necrotic cells by displaying red fluorescence.¹⁰⁵ In general, these two dyes are imaged using fluorescence microscopy, but for validation and numerical quantification, flow cytometry is usually required.¹⁰⁶ This method is an analytical technology that ensures a rapid examination of cell populations offering flexibility for different particularities of cell cycle events research.¹⁰⁷

The combination of microscopy imaging and flow cytometry in one device makes the detection of apoptosis and necroptosis possible, as described by Pietkiewicz *et al.* 2015. They imaged the morphology of the nucleus at a single cell level using annexin V-FITC and propidium iodide staining protocol.¹⁰⁸



Table 1 Methods for different stages of apoptosis detection and the main biomarkers

Apoptosis stage	Event	Biomarker	Methods used for the detection	Sources
Early	Loss of membrane asymmetry	Phosphatidylserine (PS) externalization	Light microscopy	20
			Carbon dots-annexin V probe & fluorescence spectroscopy	21
			AI & PI staining	22
			Flow cytometry	23 and 24
			Electrochemical probes	25
			Label free SERS sensing	26
			Fluorometric methods	27
			Iron oxide nanoparticles conjugated with <i>Pisum sativum</i> agglutinin & MR imaging & confocal microscopy	24
			Imaging flow cytometry & convolutional autoencoder	28
			Imaging techniques	29 and 30
	Cell shrinkage and membrane damage	Decrease in cell size, presence of membrane blebs	Flow cytometry	4 and 29
			Dielectrophoretic assay	31
	Chromatin changes	DNA condensation	Spectrofluorometric assay	32
			High resolution confocal imaging – single molecule localization microscopy	33
			Monoclonal antibodies against single-stranded DNA	34 and 35
			ELISA	36–38
	Mitochondrial changes	Depolarization of the mitochondrial membrane potential	TUNEL assay	4,39
			DNA-specific fluorochromes & fluorescence microscopy	40–42
			Haematoxylin & eosin staining	43
			Membrane permeable lipophilic and cationic fluorescent dyes & fluorescence microscopy	44 and 45
		Release of cytochrome c and other pro-apoptotic factors from the mitochondria to the cytosol	Mitochondrial activity of streptolysin O	46
			permeabilised cells & luciferase luminescence assay	47
			Flow cytometry – anti-cytochrome c monoclonal antibodies & fluorochromes	47
			Competitive immunoassay of ELISA,	48 and 49
			electrochemiluminescence ELISA	49
		Activation of Bax proteins	Western blot	50
			Fluorometric assay based on aptamer/gold nanocluster probe	51
			Confocal laser scanning microscopy using carbon dots	52
			Western blot, single molecule localization microscopy, confocal imaging, fluorescence cross correlation spectroscopy, protein-cross linking, and mass spectrometry	53
	Activation of caspases and apoptosome formation	Caspase-8 activation by extracellular signals, like fas ligand or TNF	Immunocytochemistry	54
			Colorimetric assay, Western blot	55
			ELISA	56 and 57
			Flow cytometry, fluorometric activity assay	58
		Caspase-9 activation by cytosolic cytochrome c and the formation of the apoptosome together with Apaf-1	Immunofluorescence	59
			Membrane permeant fluorescent-labelled inhibitors of caspases & fluorescence microscopy	60
			Colorimetric assay (e.g. using unlabelled DEVD containing peptide substrate and unmodified gold nanoparticles) & Western blot	55 and 61
			Mathematical simulation & computational methods	62 and 63
			Split luciferase complementation assay (e.g. Lumiptosome, lentivirus transfected split luciferase fragment)	64–66
			Calorimetry, NMR spectroscopy, site mutagenesis	63



Table 1 (Contd.)

Apoptosis stage	Event	Biomarker	Methods used for the detection	Sources
Mid	DNA damage	DNA fragmentation by caspase-activated DNases (CAD) into 180–200 bp long fragments (X)	Immunofluorescence	59
			SDS-PAGE	67
			TUNEL & single stranded DNA assay	68
			COMET assay	69
			Laser scanning cytometry, Halo assay, combination assay	22
			<i>In situ</i> ligation assay	70 and 71
			<i>In situ</i> end labelling	72 and 73
			Light microscopy, fluorescence microscopy TEM & SEM	30 and 74
			Electrochemiluminescence ELISA assay using a neo-epitope antibody against cleaved Lamin A	75
			Coumarin based fluorescent substrates, irreversible inhibitors, selective aggregation induced emission luminogens combined with mass cytometry, immunofluorescence, confocal microscopy, and western blot	76
	Change in cell shape Apoptotic bodies formation	Cell becomes spherical and detaches from neighbouring cells Activation of caspase-6 and caspase-7	Immunoblot, flow cytometry, luminescence & immunofluorescence	59 and 76–79
			SDS-PAGE, Coomassie staining, fluorography analysis, caspase activity assay by means of fluorimetry	79
			Membrane bound fragments called apoptotic bodies are formed in a controlled way, preventing the release of certain molecules in the extracellular matrix which could interfere with surrounding cells	74 and 80–82
			Microscopy methods (phase contrast time lapse microscopy, confocal microscopy, TEM, SEM)	74 and 80
			Dynamic light scattering, liquid chromatography tandem mass spectrometry	81 and 83
			Fluorescence activated cell sorting, differential centrifugation & flow cytometry staining	84
			Morphometric area analysis & morphometric cell count	85
			Fluorescence labelling with Trp-BODIPY cyclic peptide	86
			<i>In situ</i> DNA ligation	87–90
			Microscopy methods (light microscopy, phase contrast, fluorescence, confocal, TEM, SEM)	83, 88 and 89
Late	Phagocytosis	Apoptotic bodies are engulfed and degraded by other cells	Fluorescence activated cell sorting, differential centrifugation & flow cytometry staining	85
			Fluorescence labelling with Trp-BODIPY cyclic peptide	
			Immunolabelling methods	91–93
			Microscopy methods (confocal microscopy, TEM & SEM)	91, 92 and 94
	Degradation of cellular components	Organelles and other cellular structures are processed into component parts		

TUNEL assay

TUNEL assay is another representative apoptosis assay that can be performed *in vitro* on cell cultures, but also *in vivo* on animal models¹⁰⁹ and *ex vivo* on different tissues.^{110,111} The technique name comes from terminal deoxynucleotidyl transferase (Tdt)-mediated dUTP nick-end of DNA fragments labelling during chromatin condensation.¹¹² The analysis have involved flow cytometry¹¹³ or microscopy.⁴¹ Being one of the firsts methods used for apoptosis detection, TUNEL assay had a big disadvantage, its accuracy in differentiating between necrotic cells and late-apoptotic cells.¹¹⁴ In the next years, an attempt to optimize these difficulties was made and the improvements

consist in exploring other fluorophores¹¹⁵ or antibodies¹¹⁶ for labelling the DNA fragments or using different software platforms for the analysis.⁸⁴

Considering these aspects, the significance of developing novel techniques for apoptosis detection lies in their potential to address the challenges associated with conventional methods. By doing so, researchers can obtain more precise, targeted, and comprehensive insights into apoptotic mechanisms within both research and clinical settings. This phenomenon contributes to an enhanced comprehension of cellular apoptosis mechanisms, pathological pathways, and the potential of establishing improved therapeutic approaches.



Advanced methods for the detection of apoptosis

Caspases

Caspases are cysteine proteases that act as key components in certain types of programmed cell death, such as apoptosis, pyroptosis, necroptosis, necrosis, autophagy and mitotic catastrophe.¹¹⁷ Normally they are expressed as inactive zymogens but once stimulated, they become fully active subsequently autolytic cleavage.¹¹⁸ Apoptosis involves the activation of caspases which degrade cell components. They are known to cleave a broad spectrum of structural proteins like actin, tubulin, vimentin, ROCK1, filamin-A and fodrin which might contribute to the specific apoptotic cell morphology.¹¹⁹ This is followed by the formation of apoptotic bodies which are removed by surrounding cells *via* phagocytosis. Their active form and cleavage residue presence can be correlated to specific cell death types. Direct quantification methods for these cell death biomarkers that rely on antibody labelling are currently used, including ELISA, flow cytometry and Western blot. However, sample damage, long assay duration and the need of sophisticated instruments and expensive reagents, are some drawbacks that make them unsuitable for live cell assays, point-of-care applications and/or *in vivo* studies. Evaluation of apoptosis by monitoring the proteolytic activity of such caspases is a more reliable and less invasive approach that allows real-time monitoring of apoptosis both *in vitro* and *in vivo*. With hundreds of substrates identified so far,¹¹⁹ proteomic studies were able to highlight the dominant motifs cleaved by specific members of the caspase family of proteins.¹²⁰ Since caspase 3 and 7 are the main proteases involved in cell death, many sensors for apoptosis rely on short peptides containing restriction sites for these two members. The optimal and most used sequence for caspase 3/7 activity sensor designing is a 4 amino acids peptide: DEVD (Asp-Glu-Val-Asp). Therefore, a wide variety of methods for apoptosis detection rely on linking a fluorophore to a quencher through a DEVD motif. The resulted construct will either switch from a fluorescent off state to an on state or significantly change its optic properties consequent to the specific proteolytic cleavage.

A wide variety of methods to quantify caspase activity for the indirect evaluation of apoptosis have been reported.

Caspase cleavage of bioengineered substrate molecules as a fluorescence on/off switch. Since these techniques only show a fluorescent signal as a response to activated caspases, it is a reliable approach to distinguish apoptosis from other types of cell death. Therefore, they can be used to highlight the efficacy of treatments that involve the use of apoptosis-inducing compounds.

Genetically modified cells to express switch-on fluorescence-base indicators that are specifically cleaved by caspase-3 like proteases have been used to detect cell death in real-time.¹²¹ These indicators were designed by genetic engineering using Venus (a yellow fluorescent protein) as a template. The final genetically encoded construct is a cyclized protein, in a non-fluorescence state, that contains a caspase-3 cleavage site

(DEVD). Fluorescence activity is only acquired after the caspase specific cleavage of DEVD. This method allows the evaluation of apoptosis in real-time in various conditions and is suitable both for 2D and 3D cell culture models.

One interesting and novel approach relies on aggregation induced emission (AIE) luminogens. AIE is a phenomenon that has gained significant interest in the domain of cellular imaging and theranostics. In contrast to other fluorescent molecules or nano-objects, AIE luminogens (AIEgens) present a strong emission when they form aggregates due to a restriction in intramolecular movements.¹²² Since their discovery by Ben Zhong Tang's group,¹²³ they have become a key component in many applications, including the evaluation of cellular processes. Moreover, AIE based probes suitable for both apoptosis evaluation (through caspase-3/-7 activity quantification) and apoptosis inducing compounds screening have been described. One such probe consists of an AIE hydrophobic luminogen (TPE) in a fluorescence off-state due to the conjugation with a caspase-specific peptide (DEVD). When apoptosis is triggered following caspase-3/-7 activation, the two subunits are freed through caspase cleavage and the TPE residues aggregate followed by a turn-on in their fluorescence.¹²⁴

Fluorescence resonance energy transfer (FRET) between two proteins (CFP and YFP) linked together by DEVD has been used for apoptosis detection in living zebra fish at single cell resolution. The gene for this fusion protein was inserted after a skin specific keratin 4 promoter leading to a green fluorescence signal (specific to YFP) under the excitation of the donor molecules (CFP) in skin cells. The cleavage of DEVD by caspase 3/7 would reduce the energy transfer, shifting the overall emission from green to blue (specific to CFP). Single apoptotic cells could be tracked in real time in a live vertebrate animal model.¹²⁵

Caspase cleavage of luciferase prosubstrates and bioluminescence evaluation

Besides fluorescence, bioluminescence is another non-invasive optical imaging technology that has shown huge potential for the detection of biological processes *in vivo*. This method relies on the enzymatic conversion of a non-luminescent substrate into a light producing molecule. As a result, bioengineered cells that express luciferase can metabolise exogenous luciferin leading to a luminescent signal, which can further be quantified. Lately, numerous bioluminescent probes for apoptosis detection in animal models have been developed.

In one example, firefly luciferase positive cells were subcutaneously administered in SCID mice and tumours were allowed to grow. The authors used a modified substrate, Z-DEVD-amino luciferin, which could only be metabolised by luciferase after the initiation of RCD, the consequent activation of caspases and cleavage of the prosubstrate.¹²⁶ Therefore, they were able to provide a biocompatible, preclinical method for the detection of apoptotic cells.

Cytochrome c

Cytochrome c (Cyt c) is a hemeprotein that is connected to the inner mitochondrial membrane and functions as an electron transporter required for ATP production.¹²⁷



The transfer of Cyt c from the intermembrane space of the mitochondria into the cytoplasm is an event unique to early apoptosis because, under normal circumstances, the outer mitochondrial membrane is only permeable to small metabolites up to ~5 kDa.¹²⁸

This process, which is a crucial step in the intrinsic apoptosis pathway, was frequently referred to as the irreversible point of apoptosis,⁹⁹ even though more recent data suggest that cells might recover from late stages of programmed cell death through a mechanism called anastasis.¹²⁹ However, quantifying cytochrome c release from the mitochondria remains a powerful tool for the evaluation of apoptosis.

In dying cells, a Cyt c concentration between 1 and 10 μM (ref. 99) can be identified because a little portion of Cyt c released from the mitochondria can stimulate various amplification loops, which lead to the release of all of Cyt c from the mitochondria to the cytosol.^{128,130} This will eventually lead to the formation of the apoptosome (Apaf-1/caspase-9/cytochrome c complex), which is in charge of cellular structure breakdown.

As a result, the quantification of Cyt c release is frequently employed to highlight mitochondria-dependent apoptosis.¹⁰⁰ However, the most popular techniques are either laborious or call for complicated processes including immunolabeling, subcellular separation, and western blotting.⁴⁷

As a result, nanoparticle-based assays for Cyt c quantification have gained popularity lately. Many of these rely on carbon dots (CDs), some carbon-based nanoparticles, due to their unique optical properties, increased stability, biocompatibility, selectivity and sensitivity. Certain quenching mechanisms of Cyt c towards CDs have made them ideal candidates for the quantification of this molecule. Based on these properties, recent studies report the successful usage of CDs for apoptosis detection *in vitro*.^{52,99} Moreover, Cyt c concentration was determined in human serum samples¹³¹ and in living zebrafish.⁹⁹

Phosphatidylserine externalization sensors

Phosphatidylserine externalization acts as an “eat me” signal of apoptotic cells to neighbouring phagocytes and is considered a hallmark of apoptosis.¹³² However, recent studies suggest that the PS externalization process is inducible, reversible and not associated to other apoptosis specific events, such as mitochondrial Cyt c release, activation of caspases or DNA fragmentation.^{132,133} Nevertheless, PS export to the outer plasma membrane leaflet lays the foundation for Fluorescein isothiocyanate-conjugated annexin V binding assay for apoptosis detection.²³ Notably, this process is regulated in a calcium dependent manner¹³³ and a complete inhibition of PS externalization was reported in some hematopoietic cell lines in the absence of extracellular calcium.¹³³ Moreover its externalization is also inhibited by calcium channel blockers,¹³² making the annexin V assay through flow cytometry or fluorescence microscopy rely on the addition of external calcium ions. Similar to this technique, more recent methods that focus on labelling PS have been developed. The detection of single apoptotic cells using luminol electrochemiluminescence has been reported.¹³⁴ Other studies use nanomaterials such as

carbon quantum dots to design annexin V conjugated apoptosis detection probes,²¹ or silver nanoparticles followed by SERS analysis to highlight externalized PS.²⁶ Radiolabelled annexin V was also used to detect apoptotic cells *in vivo*.^{135,136} Although, there are lots of commercially available FITC-annexin V kits to highlight and distinguish apoptosis from other RCD types, and a wide diversity of methods have been developed and used to assess cell death based on the same principle, their efficacy and specificity have lately been questioned due to recent studies which report PS exposure in non-apoptotic cells, such as cells that undergo necroptosis or pyroptosis.^{137–140}

Computational tools

Label-free detection of apoptosis in live cells could help overcome the inconvenience of a potential interference between the fluorescent probe and the physiological functions of the cell. Although it can be difficult to achieve, deep learning- and activity recognition-based systems have allowed the detection and quantification of apoptotic events with high accuracy. The training model relies on large datasets of both apoptotic and nonapoptotic cells, multiple cell types and fluorescent labels and several imaging techniques. This computational tool can detect multiple apoptotic events in microscopy time-lapses and quantify cytotoxicity *in vitro* and *in vivo* based on live-cell imaging, such as intravital microscopy data.¹⁴¹

Other recent studies describe the use of deep learning to discriminate apoptosis from necroptosis using label-free digital holographic microscopy,¹⁴² or to classify apoptosis and ferroptosis consequent to anti-transferrin receptor 1 antibody, DAPI and phalloidin-FITC staining.¹⁴³ The aforementioned methods are able to predict or identify these cellular processes with increased accuracy.

Clinical evaluation of apoptosis

The last years have witnessed an increasing amount of newly approved therapeutic schemes, especially in the oncological domain. These treatments aim to disrupt the carcinogenesis process by interfering with the components from the cell death pathway and induce the apoptosis.^{144,145} While the main aspect behind these therapies is represented by efficient tumour clearance, a second goal is to achieve the installation of programmed cell death so that cancer cells can be eliminated by neighbouring phagocytic cells in a “quiet and quickly” manner.¹⁴⁶ Therefore, it is critical to implement in clinical practice imaging techniques that can specifically evaluate the efficiency of apoptosis-inducing therapies for disease monitoring, especially cancer. The different approaches for apoptosis detection, their advantages, drawbacks and some applications are presented in Table 2.

Currently, in clinical setting, these methods primarily rely on magnetic resonance imaging (MRI) that can track the changes in the diffusive properties of a tissue or tumour mass (DW-MRI), where a tissue affected by cell death will have an increased water diffusion and diffusion coefficient respectively.^{147,148} In addition to MRI techniques, high-frequency ultrasound (10 MHz or



Table 2 Comparison of different luminescence-based methods for apoptosis detection

Method	Source	Advantages	Drawbacks	Applications
Bioluminescence	Bioluminescence proteins (e.g., firefly luciferase/Renilla luciferase)	High sensitivity	In some cases, the reporter gene must be introduced in the genome through genetic manipulation	<i>In vitro</i> , <i>ex vivo</i> and <i>in vivo</i> detection of apoptosis ¹⁶⁵
		Does not require external excitation light source	Lower resolution compared to other techniques	<i>In vitro</i> , <i>ex vivo</i> and <i>in vivo</i> drug screening of proapoptotic compounds ¹⁶⁶
	Bioluminescence resonance energy transfer (BRET) – based biosensor	Suitable for real-time detection	Transient signal	<i>In vitro</i> fluorescence-based detection and <i>in vivo</i> bioluminescence-based detection of apoptosis ¹⁶⁷
		Suitable for <i>in vivo</i> studies		BRET-induced NIR emission-based detection of apoptotic cells ¹⁶⁸
Fluorescence	Caspase activity reporters (fluorescent molecule (\pm quencher) bound to a peptidic substrate)	High sensitivity	The reporter gene must be introduced in the genome through genetic manipulation	Apoptosis monitoring and drug screening detection based on AIE ¹²⁴
		High specificity	Caspase kinetics alteration	Real-time monitoring of apoptosis in cultured cells ^{169,170}
		Suitable for real-time detection	Limited applicability for complex tissues and <i>in vivo</i> models	Caspase activity evaluation with potential applications in drug design and screening ¹⁷¹
		Suitable for <i>in vivo</i> studies	Potential cytotoxicity	
	Annexin V – conjugated probes	High sensitivity	Challenging data interpretation	
		In some cases, the reporter gene must be introduced in the genome through genetic manipulation		<i>In vivo</i> detection of cell death in murine cells and embryonic tissues ¹⁷²
		Suitable for real-time detection	May require exogenous calcium ions ¹³³	Vis/NIR-detection of cytotoxic compounds-induced apoptosis <i>in vitro</i> and <i>in vivo</i> ¹⁷³
	Nanomaterials (e.g., carbon dots, hybrid nanoparticles)	Suitable for <i>ex vivo</i> and <i>in vivo</i> studies	Specificity limitations (due to PS exposure in non-apoptotic cells) ^{137–140}	<i>In vitro</i> and <i>in vivo</i> real-time imaging of apoptosis ¹⁷⁴
		High sensitivity	Potential cytotoxicity	Vis/NIR-detection of cytotoxic compounds-induced apoptosis <i>in vitro</i> and <i>in vivo</i> ¹⁷³
		High specificity	Challenging data interpretation	<i>In vitro</i> monitoring of apoptosis inducing compounds ⁵²
	Fluorescent antibodies	Suitable for real-time detection	Limited use <i>in vivo</i>	Real-time detection of apoptosis ¹⁷⁵
		High sensitivity	Endpoint measurement	Flow cytometry evaluation of apoptosis
		High specificity	Challenging data interpretation	Immunofluorescence assays ⁹²
		Suitable for <i>ex vivo</i> studies	High cost	
	Other fluorescence dyes (e.g., DAPI/Hoechst/PI, FITC-annexin V, Mitotracker dyes)	Cost-effective	Limited use <i>in vivo</i>	<i>In vitro</i> detection of apoptosis ¹⁰⁶
		Some of them have high specificity for target biomarkers	Challenging data interpretation	
		Versatility	Often – endpoint measurement	
			May interfere with other cellular processes, leading to false positive results	
			Photobleaching	



Table 2 (Contd.)

Method	Source	Advantages	Drawbacks	Applications
Photoacoustic	Contrast agents (functionalized NPs, indocyanine green conjugates, apoptosis-specific nanobodies)	High sensitivity and spatial resolution Suitable for real-time detection	Limited specificity May interfere with other cellular processes	<i>In vivo</i> real-time detection of tumour apoptosis ^{176,177} <i>In vivo</i> evaluation of stem cell location and apoptosis ¹⁷⁸
		Suitable for <i>in vivo</i> studies	High costs of production Photostability limitations Challenging acquisition setup and data interpretation	
MRI	Contrast agents, paramagnetic/ultrasmall superparamagnetic iron oxide NPs	High sensitivity	Potential cytotoxicity	Detection of drug-induced apoptosis <i>in vitro</i> , <i>ex vivo</i> and <i>in vivo</i> ¹⁷⁹
		Suitable for real-time detection Suitable for <i>ex vivo</i> and <i>in vivo</i> studies	Limited specificity Long acquisition times High-cost equipment Challenging data interpretation	<i>In vivo</i> real-time detection of tumour apoptosis ¹⁷⁷
PET/SPECT	Specific radiotracers	Suitable for non-invasive, whole-body <i>in vivo</i> imaging High sensitivity	Limited specificity and resolution High costs	<i>In vivo</i> evaluation of caspase activity ^{153,180} <i>In vivo</i> monitoring of externalized PS during chemotherapy induced apoptosis ^{181,182}
		Quantitative Versatility	Radiation exposure Challenging data interpretation	
Ultrasound	Contrast agents	Non-invasive	Limited specificity	Detection of drug-induced apoptosis <i>in vitro</i> , <i>in situ</i> and <i>in vivo</i> ¹⁵⁰
		Suitable for real-time detection	Limited contrast	Drug screening, <i>in vitro</i> detection of different forms of cell death ¹⁸³
		Low cost	Limited depth penetration	Pre-clinical <i>in vitro</i> monitorization of radiotherapy ¹⁸⁴ and photodynamic therapy effects ¹⁴⁹
		Versatility High spatial resolution	Limited to structural information Challenging acquisition setup and data interpretation	

greater) has shown promise in the detection of apoptotic cells, both *in vitro* and *in vivo*. This imaging modality utilizes the unique specular reflections produced by apoptotic cells, predominantly arising from the condensation and fragmentation of the cell nucleus during the later stages of apoptosis. Ultrasound transducers operating at frequencies of 10–60 MHz generate wavelengths of 25–150 μm , which closely match the size of individual cells and nuclei (10–20 μm), enabling sensitivity to change in cell size and nuclear morphology associated with apoptosis. Notably, the backscatter from apoptotic nuclei is significantly higher, up to six-fold, compared to non-apoptotic cellular nuclei. This distinctive signal can be

observed in cultures treated with a variety of drugs and radiation. Consequently, the combination of high-frequency ultrasound with other imaging modalities, such as MRI, offers a comprehensive approach for evaluating apoptosis and provides valuable insights into the cellular and molecular changes occurring in pathological conditions.^{149,150}

Magnetic resonance spectroscopy (MRS) is also used to measure lipid concentration and correlation of fat-water ratio for cell death quantification.^{151,152} However, these techniques are not capable to timely and directly quantify the induction of apoptosis and fail to offer specific indicators. Other intensive tested methods involve the radiolabelling of Annexin-V or



apoptosis compounds and tracking of their uptake and bio-distribution *via* positron emission tomography (PET) or single photon-emission tomography (SPECT). Although more specific, these methods are not yet efficient in specifically detecting and differentiating true cell death from growth arrest.¹⁴⁶ Experimental imaging techniques are now relying on the specific labelling of active caspases or substrates that are cleaved by these enzymes^{153,154} and further quantification *via* PET imaging. Even so, there are issues related to the selectivity and specificity of the ligands or the uptake of the substrates.

Fluorescent imaging is one of the most commonly used technique for preclinical research involving early diagnosis, drug development, real-time therapeutic monitoring and prediction of prognosis. The reliability of this technique is supported by the sensibility of fluorescence, the stability of the fluorescent labels, advanced labelling techniques for specific molecular targets and ultimately, the reliable spatial resolution in comparison with the cellular dimensions.¹⁵⁵ Most of the techniques currently used in the clinic involve *ex vivo* analysis for quantification of specific molecules or events based on fluorescence assay. Such an example is the evaluation of apoptosis through terminal deoxynucleotidyl transferase (TdT) dUTP nick and labelling (TUNEL). This assay is measuring the fluorescent labelled dUTPs that are integrated *via* TdT into the damaged DNA of a biopsy sample, where the intensity of the fluorescence is correlated with the degree of apoptosis.^{156,157} Similar principles are applied in the case of immunofluorescence techniques where specific tissue or circulatory molecules can be detected based on antibody – antigen affinity and use of fluorochromes to detect the location of the antibody. This technique can highlight the presence of specific molecules associated with the induction of apoptosis, or even multiple ones through simultaneous labelling with different fluorophores (*e.g.* FITC or rhodamine).¹⁵⁸ These assays are valuable to quantify the molecular changes related to cell death in tissue samples before and after treatment; however, there is a significant disadvantage consisting in the necessity of multiple biopsies and inability to monitor patients in real-time. While serial tumours sampling (or other tissue) is not necessarily a proper strategy in clinical trials, an advantageous technique could be represented by specific measurement of circulating molecules associated with cell apoptosis, considering the minimally invasive character of blood sampling. One group of such molecules are cytokeratins that represent up to 5% of the intracellular proteins.¹⁵⁹ Experimental evidence suggests that quantification of CK18 and/or CK19 in liquid biopsies could predict the cell death ratio in tumours, but are not able to differentiate apoptosis from necrosis: the release of soluble CKs takes place in both mechanisms.^{160,161} However, combination techniques like the one between M30 apoptosis ELISA directed toward a caspase-cleaved neo-epitope on CK18 and M65 ELISA for detection of cleaved and intact CK18 from liquid samples could differentiate between different mechanisms of cell death in patients.¹⁶¹ Currently used techniques for molecular diagnostics are based on ELISA assays that quantify the colorimetric reaction between an antibody directed toward a molecule of interest and linked to an enzyme, and a substrate that is processed by the specific enzyme.¹⁵⁸ However, considering the low amounts of circulatory apoptotic biomarkers in the liquid samples of the

patients, a more advantageous approach could consist in fluorescence-linked immunosorbent assay (FLISA) or fluorescent ELISA (FELISA), techniques that are a more sensitive variation from the standard colorimetric ELISA and also more suitable for high throughput screening due to minimal amounts of required antibodies and less manipulation. However, at the current time, there are no extensive clinical studies based on this approach.

Nevertheless, an *ex vivo* approach for dynamically measuring cell apoptosis in patients during treatment is not necessarily feasible compared to the imaging approaches. Fluorescent evaluation in the clinical setting is hampered by the unavailability of fluorescent dyes approved for patients use.¹⁵⁵ For the moment only two fluorophores, indocyanine green (ICG) and fluorescein, have been reported in the clinic for fluorescence based imaging of patients. ICG has been used to reconstruct in 3D an image of human breast cancer *via* fluorescence diffuse optical tomography (FDOT).¹⁶² Fluorescein has been experimentally used in ophthalmology for diagnosis of cystoid macular edema (CME) *via* fundus fluorescein angiography (FFA). Even so, the standard optical coherence tomography (OCT) has been assessed as more superior in demonstrating axial distribution of fluid.¹⁶³ Although these studies are promising, ICG and fluorescein are non-specific exogenous fluorophores and thus are not suitable for targeted molecular imaging. However, these types of approaches are standing at the base of clinical trials based on targeted fluorophores for real life detection of specific biomarkers of apoptosis. Moreover, combination of fluorescence molecular tomography (FMT) with X-ray computed tomography (CT) or MRI will enhance the value of the imaging due to the possibility of specific mapping of molecular structures according to anatomical structures.¹⁵⁵

Emerging data suggest that the dysregulation of apoptosis, through upregulation or downregulation, plays a significant role in the pathogenesis of various human diseases. However, the molecular mechanisms responsible for this dysregulation during disease initiation remain undefined. Consequently, future research should prioritize identifying the specific cellular and molecular entities that modulate apoptosis, with objectives centred on its inhibition or amplification based on therapeutic needs. It is crucial to emphasize functional assays to assess cellular viability, which provides a more precise evaluation of potential therapeutic agent efficacy compared to simply tracking cell retention or eradication.

A primary aim in biomedical research is harnessing insights into abnormal apoptosis to devise treatments enhancing patient outcomes in related diseases. Notably, in oncology, the observation that the majority of chemotherapeutic agents induce apoptosis in cancer cells has spurred investigations into treatments that target this dysregulated apoptosis. Furthermore, the integration of apoptosis imaging with imaging of other biological pathways, such as metabolism and angiogenesis, has potential to optimize clinical decision-making in diseases and interventions centred on apoptosis. Additionally, direct therapeutic interventions aiming at modulating apoptosis may exhibit reduced systemic toxicity compared to traditional chemotherapy. Such interventions could function as adjunctive treatments, augmenting the pro-apoptotic response



of tumour cells during chemotherapeutic exposure. In autoimmune disease contexts, inducing apoptosis in auto-reactive lymphocyte subsets by introducing specific autoantigens without co-stimulatory survival signals offers promise. The efficacy of this strategy has been demonstrated in murine models of experimental autoimmune encephalomyelitis.¹⁶⁴

Conclusions

Apoptosis detection involves specific equipment and reagents that sometimes require high costs, laborious work, and prolonged time. Moreover, the lack of sensitivity and/or specificity are common in conventional apoptosis detection assays, making them inadequate to establish cell death conclusively. Consequently, a combination of complementary yet distinct techniques is highly recommended, such as fluorogenic assays with molecular quantification of apoptosis specific proteins. However, conventional methods have evolved to be used in more general assays, such as routine and preliminary experiments. Given these circumstances, it is essential to use comprehensive apoptosis detection techniques which add considerable value to both *in vitro* and *in vivo* research to ensure thorough understanding of the RCD events and factors influencing them.

The optical properties of various molecules or nanomaterials have been exploited to design improved probes with higher detection efficacy, increased signal to noise ratio and simplicity of approach, for example ON/OFF sensors and other probes which rely on event triggered changes in their optical properties. Furthermore, this allows to distinguish between RCD types that share similar characteristics and can investigate rapidly occurring cellular stages of such events. A novel trend is the use of computational tools such as deep learning in predicting apoptosis within a cell population, tissue or *in vivo*.

Author contributions

The manuscript was written through contributions of all authors. All authors have given approval to the final version of the manuscript.

Conflicts of interest

There are no conflicts to declare.

Acknowledgements

This work was granted by project "Development of the institutional capacity of UMFIH to support research, development and innovation activities in precision medicine (PrecisMED)" CNFIS-FDI-2023-0193. All figures were created using <https://www.biorender.com/>.

References

- 1 M. S. D'Arcy, Cell death: a review of the major forms of apoptosis, necrosis and autophagy, *Cell Biol. Int.*, 2019, **43**, 582–592.

- 2 L. Galluzzi, S. A. Aaronson, J. Abrams, E. S. Alnemri, D. W. Andrews, E. H. Baehrecke, N. G. Bazan, M. V. Blagosklonny, K. Blomgren, C. Borner, D. E. Bredesen, C. Brenner, M. Castedo, J. A. Cidlowski, A. Ciechanover, G. M. Cohen, V. De Laurenzi, R. De Maria, M. Deshmukh, B. D. Dynlacht, W. S. El-Deiry, R. A. Flavell, S. Fulda, C. Garrido, P. Golstein, M.-L. Gougeon, D. R. Green, H. Gronemeyer, G. Hajnóczky, J. M. Hardwick, M. O. Hengartner, H. Ichijo, M. Jäättelä, O. Kepp, A. Kimchi, D. J. Klionsky, R. A. Knight, S. Kornbluth, S. Kumar, B. Levine, S. A. Lipton, E. Lugli, F. Madeo, W. Malorni, J.-C. Marine, S. J. Martin, J. P. Medema, P. Mehlen, G. Melino, U. M. Moll, E. Morselli, S. Nagata, D. W. Nicholson, P. Nicotera, G. Nuñez, M. Oren, J. Penninger, S. Pervaiz, M. E. Peter, M. Piacentini, J. H. M. Prehn, H. Puthalakath, G. A. Rabinovich, R. Rizzuto, C. M. P. Rodrigues, D. C. Rubinsztein, T. Rudel, L. Scorrano, H.-U. Simon, H. Steller, J. Tschopp, Y. Tsujimoto, P. Vandenabeele, I. Vitale, K. H. Vousden, R. J. Youle, J. Yuan, B. Zhivotovsky and G. Kroemer, Guidelines for the use and interpretation of assays for monitoring cell death in higher eukaryotes, *Cell Death Differ.*, 2009, **16**, 1093–1107.
- 3 F. G. Blankenberg, P. D. Katsikis, R. W. Storrs, C. Beaulieu, D. Spielman, J. Y. Chen, L. Naumovski and J. F. Tait, Quantitative analysis of apoptotic cell death using proton nuclear magnetic resonance spectroscopy, *Blood*, 1997, **89**, 3778–3786.
- 4 I. Vermes, C. Haanen and C. Reutelingsperger, Flow cytometry of apoptotic cell death, *J. Immunol. Methods*, 2000, **243**, 167–190.
- 5 A. Lekshmi, S. N. Varadarajan, S. S. Lupitha, D. Indira, K. A. Mathew, A. Chandrasekharan Nair, M. Nair, T. Prasad, H. Sekar, A. K. Gopalakrishnan, A. Murali and T. R. Santhoshkumar, A quantitative real-time approach for discriminating apoptosis and necrosis, *Cell Death Discovery*, 2017, **3**, 16101.
- 6 T. Vicar, M. Raudenska, J. Gumulec and J. Balvan, The Quantitative-Phase Dynamics of Apoptosis and Lytic Cell Death, *Sci. Rep.*, 2020, **10**, 1566.
- 7 S. Vasudevan, G. C. K. Chen, M. Andika, S. Agarwal, P. Chen and M. Olivo, Dynamic quantitative photothermal monitoring of cell death of individual human red blood cells upon glucose depletion, *J. Biomed. Opt.*, 2010, **15**, 057001.
- 8 A. Sadeghi-Naini, S. Zhou, M. J. Gangeh, Z. Jahedmotlagh, O. Falou, S. Ranieri, M. Azrif, A. Giles and G. J. Czarnota, Quantitative evaluation of cell death response *in vitro* and *in vivo* using conventional-frequency ultrasound, *Oncoscience*, 2015, **2**, 716–726.
- 9 B. Méry, J.-B. Guy, A. Vallard, S. Espenel, D. Ardail, C. Rodriguez-Lafrasse, C. Rancoule and N. Magné, Vitro Cell Death Determination for Drug Discovery: A Landscape Review of Real Issues, *J. Cell Death*, 2017, **10**, 117967071769125.



- 10 B. S. Cummings and R. G. Schnellmann, Measurement of Cell Death in Mammalian Cells, *Curr. Protoc. Pharmacol.*, 2004, DOI: [10.1002/0471141755.ph1208s25](https://doi.org/10.1002/0471141755.ph1208s25).
- 11 Ö. S. Aslantürk, in *Genotoxicity – A Predictable Risk to Our Actual World*, InTech, 2018.
- 12 B. Yu, B. Zhang, W. Zhou, Q. Wang, P. Yuan, Y. Yang and J. Kong, Assessing Apoptosis Gene Expression Profiling with a PCR Array in the Hippocampus of Ts65Dn Mice, *BioMed Res. Int.*, 2015, **2015**, 1–8.
- 13 D. J. Hooker, P. R. Gorry, A. M. Ellett, S. L. Wesselingh and C. L. Cherry, Measuring and monitoring apoptosis and drug toxicity in HIV patients by ligation-mediated polymerase chain reaction, *J. Cell. Mol. Med.*, 2009, **13**, 948–958.
- 14 B. Liu, Z. N. Oltvai, H. Bayır, G. A. Silverman, S. C. Pak, D. H. Perlmutter and I. Bahar, Quantitative assessment of cell fate decision between autophagy and apoptosis, *Sci. Rep.*, 2017, **7**, 17605.
- 15 J. H. Buchbinder, D. Pischel, K. Sundmacher, R. J. Flassig and I. N. Lavrik, Quantitative single cell analysis uncovers the life/death decision in CD95 network, *PLoS Comput. Biol.*, 2018, **14**, e1006368.
- 16 L. Galluzzi, I. Vitale, S. A. Aaronson, J. M. Abrams, D. Adam, P. Agostinis, E. S. Alnemri, L. Altucci, I. Amelio, D. W. Andrews, M. Annicchiarico-Petruzzelli, A. V. Antonov, E. Arama, E. H. Baehrecke, N. A. Barlev, N. G. Bazan, F. Bernassola, M. J. M. Bertrand, K. Bianchi, M. V. Blagosklonny, K. Blomgren, C. Borner, P. Boya, C. Brenner, M. Campanella, E. Candi, D. Carmona-Gutierrez, F. Cecconi, F. K.-M. Chan, N. S. Chandel, E. H. Cheng, J. E. Chipuk, J. A. Cidlowski, A. Ciechanover, G. M. Cohen, M. Conrad, J. R. Cubillos-Ruiz, P. E. Czabotar, V. D'Angiolella, T. M. Dawson, V. L. Dawson, V. De Laurenzi, R. De Maria, K.-M. Debatin, R. J. DeBerardinis, M. Deshmukh, N. Di Daniele, F. Di Virgilio, V. M. Dixit, S. J. Dixon, C. S. Duckett, B. D. Dynlacht, W. S. El-Deiry, J. W. Elrod, G. M. Fimia, S. Fulda, A. J. García-Sáez, A. D. Garg, C. Garrido, E. Gavathiotis, P. Golstein, E. Gottlieb, D. R. Green, L. A. Greene, H. Gronemeyer, A. Gross, G. Hajnoczky, J. M. Hardwick, I. S. Harris, M. O. Hengartner, C. Hetz, H. Ichijo, M. Jäättelä, B. Joseph, P. J. Jost, P. P. Juin, W. J. Kaiser, M. Karin, T. Kaufmann, O. Kepp, A. Kimchi, R. N. Kitsis, D. J. Klionsky, R. A. Knight, S. Kumar, S. W. Lee, J. J. Lemasters, B. Levine, A. Linkermann, S. A. Lipton, R. A. Lockshin, C. López-Otín, S. W. Lowe, T. Luedde, E. Lugli, M. MacFarlane, F. Madeo, M. Malewicz, W. Malorni, G. Manic, J.-C. Marine, S. J. Martin, J.-C. Martinou, J. P. Medema, P. Mehlen, P. Meier, S. Melino, E. A. Miao, J. D. Molkentin, U. M. Moll, C. Muñoz-Pinedo, S. Nagata, G. Nuñez, A. Oberst, M. Oren, M. Overholtzer, M. Pagano, T. Panaretakis, M. Pasparakis, J. M. Penninger, D. M. Pereira, S. Pervaiz, M. E. Peter, M. Piacentini, P. Pinton, J. H. M. Prehn, H. Puthalakath, G. A. Rabinovich, M. Rehm, R. Rizzuto, C. M. P. Rodrigues, D. C. Rubinsztein, T. Rudel, K. M. Ryan, E. Sayan, L. Scorrano, F. Shao, Y. Shi, J. Silke, H.-U. Simon, A. Sistigu, B. R. Stockwell, A. Strasser, G. Szabadkai, S. W. G. Tait, D. Tang, N. Tavernarakis, A. Thorburn, Y. Tsujimoto, B. Turk, T. Vanden Berghe, P. Vandenabeele, M. G. Vander Heiden, A. Villunger, H. W. Virgin, K. H. Vousden, D. Vucic, E. F. Wagner, H. Walczak, D. Wallach, Y. Wang, J. A. Wells, W. Wood, J. Yuan, Z. Zakeri, B. Zhivotovsky, L. Zitvogel, G. Melino and G. Kroemer, Molecular mechanisms of cell death: recommendations of the Nomenclature Committee on Cell Death 2018, *Cell Death Differ.*, 2018, **25**, 486–541.
- 17 N. J. McCarthy and G. I. Evan, *Curr. Top. Dev. Biol.*, 1997, **36**, 259–278.
- 18 T. Vanden Berghe, N. Vanlangenakker, E. Parthoens, W. Deckers, M. Devos, N. Festjens, C. J. Guerin, U. T. Brunk, W. Declercq and P. Vandenabeele, Necroptosis, necrosis and secondary necrosis converge on similar cellular disintegration features, *Cell Death Differ.*, 2010, **17**, 922–930.
- 19 M. Sachet, Y. Y. Liang and R. Oehler, The immune response to secondary necrotic cells, *Apoptosis*, 2017, **22**, 1189–1204.
- 20 B. Fadeel, B. Gleiss, K. Höglstrand, J. Chandra, T. Wiedmer, P. J. Sims, J.-I. Henter, S. Orrenius and A. Samali, Phosphatidylserine Exposure during Apoptosis Is a Cell-Type-Specific Event and Does Not Correlate with Plasma Membrane Phospholipid Scramblase Expression, *Biochem. Biophys. Res. Commun.*, 1999, **266**, 504–511.
- 21 M. Mahani, P. Karimi-Mazidi, F. Khakbaz and M. Torkzadeh-Mahani, Carbon quantum dots—Annexin V probe: photoinduced electron transfer mechanism, phosphatidylserine detection, and apoptotic cell imaging, *Microchim. Acta*, 2022, **189**, 69.
- 22 Z. Bacso and J. F. Eliason, Measurement of DNA damage associated with apoptosis by laser scanning cytometry, *Cytometry*, 2001, **45**, 180–186.
- 23 I. Vermes, C. Haanen, H. Steffens-Nakken and C. Reutellingsperger, A novel assay for apoptosis Flow cytometric detection of phosphatidylserine expression on early apoptotic cells using fluorescein labelled Annexin V, *J. Immunol. Methods*, 1995, **184**, 39–51.
- 24 G. Lin, Q. Mu, R. Revia, Z. Stephen, M. Jeon and M. Zhang, A highly selective iron oxide-based imaging nanoparticle for long-term monitoring of drug-induced tumor cell apoptosis, *Biomater. Sci.*, 2021, **9**, 471–481.
- 25 T. Liu, W. Zhu, X. Yang, L. Chen, R. Yang, Z. Hua and G. Li, Detection of Apoptosis Based on the Interaction between Annexin V and Phosphatidylserine, *Anal. Chem.*, 2009, **81**, 2410–2413.
- 26 H. Zhou, Q. Wang, D. Yuan, J. Wang, Y. Huang, H. Wu, J. Jian, D. Yang, N. Huang, C. Haisch, Z. Jiang and S. Chen, Early apoptosis real-time detection by label-free SERS based on externalized phosphatidylserine, *Analyst*, 2016, **141**, 4293–4298.
- 27 S. Morita, S. Shirakawa, Y. Kobayashi, K. Nakamura, R. Teraoka, S. Kitagawa and T. Terada, Enzymatic measurement of phosphatidylserine in cultured cells, *J. Lipid Res.*, 2012, **53**, 325–330.



- 28 J. Kranich, N. Chlis, L. Rausch, A. Latha, M. Schifferer, T. Kurz, A. Foltyn-Arfa Kia, M. Simons, F. J. Theis and T. Bocker, In vivo identification of apoptotic and extracellular vesicle-bound live cells using image-based deep learning, *J. Extracell. Vesicles*, 2020, **9**, 1792683.
- 29 L. C. Crowley, B. J. Marfell, A. P. Scott and N. J. Waterhouse, Quantitation of Apoptosis and Necrosis by Annexin V Binding, Propidium Iodide Uptake, and Flow Cytometry, *Cold Spring Harb. Protoc.*, 2016, **2016**, prot087288.
- 30 C. Stadelmann and H. Lassmann, Detection of apoptosis in tissue sections, *Cell Tissue Res.*, 2000, **301**, 19–31.
- 31 J. Cheng, Z. Lv, X. Zhang, X. Mitchelson and J. Cheng, Systematic dielectrophoretic analysis of the Ara C induced NB4 cell apoptosis combined with gene expression profiling, *Int. J. Nanomedicine*, 2013, 2333.
- 32 P. Majtnerova, J. Capek, F. Petira, J. Handl and T. Rousar, Quantitative spectrofluorometric assay detecting nuclear condensation and fragmentation in intact cells, *Sci. Rep.*, 2021, **11**, 11921.
- 33 R. Rose, N. Peschke, E. Nigi, M. Gelléri, S. Ritz, C. Cremer, H. J. Luhmann and A. Sinning, Chromatin compaction precedes apoptosis in developing neurons, *Commun. Biol.*, 2022, **5**, 797.
- 34 O. S. Frankfurt and A. Krishan, Identification of Apoptotic Cells by Formamide-induced DNA Denaturation in Condensed Chromatin, *J. Histochem. Cytochem.*, 2001, **49**, 369–378.
- 35 O. S. Frankfurt, J. A. Robb, E. V. Sugarbaker and L. Villa, Monoclonal Antibody to Single-Stranded DNA Is a Specific and Sensitive Cellular Marker of Apoptosis, *Exp. Cell Res.*, 1996, **226**, 387–397.
- 36 M. Enari, H. Sakahira, H. Yokoyama, K. Okawa, A. Iwamatsu and S. Nagata, A caspase-activated DNase that degrades DNA during apoptosis, and its inhibitor ICAD, *Nature*, 1998, **391**, 43–50.
- 37 C. Gabler, Extranuclear detection of histones and nucleosomes in activated human lymphoblasts as an early event in apoptosis, *Ann. Rheum. Dis.*, 2004, **63**, 1135–1144.
- 38 P. Salgame, An ELISA for detection of apoptosis, *Nucleic Acids Res.*, 1997, **25**, 680–681.
- 39 Z. Darzynkiewicz, D. Galkowski and H. Zhao, Analysis of apoptosis by cytometry using TUNEL assay, *Methods*, 2008, **44**, 250–254.
- 40 W. G. Telford, L. E. King and P. J. Fraker, Comparative evaluation of several DNA binding dyes in the detection of apoptosis-associated chromatin degradation by flow cytometry, *Cytometry*, 1992, **13**, 137–143.
- 41 Y. Gavrieli, Y. Sherman and S. A. Ben-Sasson, Identification of programmed cell death *in situ* via specific labeling of nuclear DNA fragmentation, *J. Cell Biol.*, 1992, **119**, 493–501.
- 42 L. C. Crowley, B. J. Marfell and N. J. Waterhouse, Analyzing Cell Death by Nuclear Staining with Hoechst 33342, *Cold Spring Harb. Protoc.*, 2016, **2016**, prot087205.
- 43 C. Charriaut-Marlangue, I. Margail, A. Represa, T. Popovici, M. Plotkine and Y. Ben-Ari, Apoptosis and Necrosis after Reversible Focal Ischemia: An *in Situ* DNA Fragmentation Analysis, *J. Cereb. Blood Flow Metab.*, 1996, **16**, 186–194.
- 44 S. Sakamuru, M. S. Attene-Ramos and M. Xia, Mitochondrial Membrane Potential Assay, *Methods Mol. Biol.*, 2016, **1743**, 17–22.
- 45 P. Nguyen, P. Doan, A. Murugesan, T. Ramesh, T. Rimpilainen, N. R. Candeias, O. Yli-Harja and M. Kandhavelu, GPR17 signaling activation by CHBC agonist induced cell death *via* modulation of MAPK pathway in glioblastoma, *Life Sci.*, 2022, **291**, 120307.
- 46 M. Fujikawa and M. Yoshida, A sensitive, simple assay of mitochondrial ATP synthesis of cultured mammalian cells suitable for high-throughput analysis, *Biochem. Biophys. Res. Commun.*, 2010, **401**, 538–543.
- 47 N. J. Waterhouse and J. A. Trapani, A new quantitative assay for cytochrome c release in apoptotic cells, *Cell Death Differ.*, 2003, **10**, 853–855.
- 48 P. Manickam, A. Kaushik, C. Karunakaran and S. Bhansali, Recent advances in cytochrome c biosensing technologies, *Biosens. Bioelectron.*, 2017, **87**, 654–668.
- 49 J. Radhakrishnan, R. Origenes, G. Littlejohn, S. Nikolich, E. Choi, S. Smite, L. Lamoureux, A. Baetiong, M. Shah and R. J. Gazmuri, Plasma Cytochrome c Detection Using a Highly Sensitive Electrochemiluminescence Enzyme-Linked Immunosorbent Assay, *Biomarker Insights*, 2017, **12**, 117727191774697.
- 50 X. Hu, Z. Li, R. Lin, J. Shan, Q. Yu, R. Wang, L. Liao, W. Yan, Z. Wang, L. Shang, Y. Huang, Q. Zhang and K. Xiong, Guidelines for Regulated Cell Death Assays: A Systematic Summary, A Categorical Comparison, A Prospective, *Front. Cell Dev. Biol.*, 2021, **9**, DOI: [10.3389/fcell.2021.634690](https://doi.org/10.3389/fcell.2021.634690).
- 51 H. Salmani-Zarchi, Y.-S. Borghei and M. Nikkhah, A turn-off fluorimetric -aptasensor for early detection of apoptosis inside the cells, *Spectrochim. Acta, Part A*, 2023, **300**, 122933.
- 52 C. S. Moldovan, A. Onaciu, V. Toma, R. Marginean, A. Moldovan, A. B. Tigu, G. F. Stiuflu, C. M. Lucaciu and R. I. Stiuflu, Quantifying Cytosolic Cytochrome c Concentration Using Carbon Quantum Dots as a Powerful Method for Apoptosis Detection, *Pharmaceutics*, 2021, **13**, 1556.
- 53 A. Jenner, A. Peña-Blanco, R. Salvador-Gallego, B. Ugarte-Urbe, C. Zollo, T. Ganief, J. Bierlmeier, M. Mund, J. E. Lee, J. Ries, D. Schwarzer, B. Macek and A. J. Garcia-Saez, DRP1 interacts directly with BAX to induce its activation and apoptosis, *EMBO J.*, 2022, DOI: [10.15252/embj.2021108587](https://doi.org/10.15252/embj.2021108587).
- 54 T. Panaretakis, K. Pokrovskaja, M. C. Shoshan and D. Grandér, Activation of Bak, Bax, and BH3-only Proteins in the Apoptotic Response to Doxorubicin, *J. Biol. Chem.*, 2002, **277**, 44317–44326.
- 55 Y. Wu, D. Zhao, J. Zhuang, F. Zhang and C. Xu, Caspase-8 and Caspase-9 Functioned Differently at Different Stages of the Cyclic Stretch-Induced Apoptosis in Human Periodontal Ligament Cells, *PLoS One*, 2016, **11**, e0168268.
- 56 T. Wieder, F. Essmann, A. Prokop, K. Schmelz, K. Schulze-Osthoff, R. Beyaert, B. Dörken and P. T. Daniel, Activation of caspase-8 in drug-induced apoptosis of B-lymphoid



- cells is independent of CD95/Fas receptor-ligand interaction and occurs downstream of caspase-3, *Blood*, 2001, **97**, 1378–1387.
- 57 M. T. Cencioni, S. Santini, G. Ruocco, G. Borsellino, M. De Bardi, M. G. Grasso, S. Ruggieri, C. Gasperini, D. Centonze, D. Barilá, L. Battistini and E. Volpe, FAS-ligand regulates differential activation-induced cell death of human T-helper 1 and 17 cells in healthy donors and multiple sclerosis patients, *Cell Death Dis.*, 2015, **6**, e1741.
 - 58 P. Yang, J. J. Peairs, R. Tano, N. Zhang, J. Tyrell and G. J. Jaffe, Caspase-8-Mediated Apoptosis in Human RPE Cells, *Investig. Ophthalmology Vis. Sci.*, 2007, **48**, 3341.
 - 59 E. Svandova, B. Vesela, A. S. Tucker and E. Matalova, Activation of Pro-apoptotic Caspases in Non-apoptotic Cells During Odontogenesis and Related Osteogenesis, *Front. Physiol.*, 2018, DOI: [10.3389/fphys.2018.00174](https://doi.org/10.3389/fphys.2018.00174).
 - 60 B. W. Lee, M. R. Olin, G. L. Johnson and R. J. Griffin, in *Apoptosis and Cancer*, Humana Press, Totowa, NJ, 2008, pp. 109–135.
 - 61 Y. Pan, M. Guo, Z. Nie, Y. Huang, Y. Peng, A. Liu, M. Qing and S. Yao, Colorimetric detection of apoptosis based on caspase-3 activity assay using unmodified gold nanoparticles, *Chem. Commun.*, 2012, **48**, 997–999.
 - 62 M. L. Würstle and M. Rehm, A Systems Biology Analysis of Apoptosome Formation and Apoptosis Execution Supports Allosteric Pro-caspase-9 Activation, *J. Biol. Chem.*, 2014, **289**, 26277–26289.
 - 63 C. A. Elena-Real, A. Díaz-Quintana, K. González-Arzola, A. Velázquez-Campoy, M. Orzáez, A. López-Rivas, S. Gil-Caballero, M. Á. De la Rosa and I. Díaz-Moreno, Cytochrome c speeds up caspase cascade activation by blocking 14-3-3 ϵ -dependent Apaf-1 inhibition, *Cell Death Dis.*, 2018, **9**, 365.
 - 64 F. Sahebazzamani, S. Hosseinkhani, L. A. Eriksson and H. O. Fearnhead, Apoptosome Formation through Disruption of the K192-D616 Salt Bridge in the Apaf-1 Closed Form, *ACS Omega*, 2021, **6**, 22551–22558.
 - 65 E. S. Hosseini, M. Nikkhah, A. A. Hamidieh, H. O. Fearnhead, J.-P. Concordet and S. Hosseinkhani, The lumiptosome, an engineered luminescent form of the apoptosome can report cell death by using the same Apaf-1 dependent pathway, *J. Cell Sci.*, 2020, DOI: [10.1242/jcs.242636](https://doi.org/10.1242/jcs.242636).
 - 66 K.-W. Hsu, C.-Y. Huang, K.-W. Tam, C.-Y. Lin, L.-C. Huang, C.-L. Lin, W.-S. Hsieh, W.-M. Chi, Y.-J. Chang, P.-L. Wei, S.-T. Chen and C.-H. Lee, The Application of Non-Invasive Apoptosis Detection Sensor (NIADS) on Histone Deacetylation Inhibitor (HDACi)-Induced Breast Cancer Cell Death, *Int. J. Mol. Sci.*, 2018, **19**, 452.
 - 67 B. B. Wolf, M. Schuler, F. Echeverri and D. R. Green, Caspase-3 Is the Primary Activator of Apoptotic DNA Fragmentation via DNA Fragmentation Factor-45/Inhibitor of Caspase-activated DNase Inactivation, *J. Biol. Chem.*, 1999, **274**, 30651–30656.
 - 68 G. Barroso, M. Morshedi and S. Oehninger, Analysis of DNA fragmentation, plasma membrane translocation of phosphatidylserine and oxidative stress in human spermatozoa, *Hum. Reprod.*, 2000, **15**, 1338–1344.
 - 69 K. Plaetzer, T. Kiesslich, C. Oberdanner and B. Krammer, Apoptosis Following Photodynamic Tumor Therapy: Induction, Mechanisms and Detection, *Curr. Pharm. Des.*, 2005, **11**, 1151–1165.
 - 70 V. V. Didenko, DNA Damage Detection *In Situ*, *Ex Vivo*, and *In Vivo*, *Methods Protoc.*, 2011, 65–75.
 - 71 A. Saraste, Morphologic and biochemical hallmarks of apoptosis, *Cardiovasc. Res.*, 2000, **45**, 528–537.
 - 72 R. Gold, M. Schmied, G. Rothe, H. Zischler, H. Breitschopf, H. Wekerle and H. Lassmann, Detection of DNA fragmentation in apoptosis: application of *in situ* nick translation to cell culture systems and tissue sections, *J. Histochem. Cytochem.*, 1993, **41**, 1023–1030.
 - 73 R. Hayashi, Y. Ito, K. Matsumoto, Y. Fujino and Y. Otsuki, Quantitative Differentiation of Both Free 3'-OH and 5'-OH DNA Ends Between Heat-induced Apoptosis and Necrosis, *J. Histochem. Cytochem.*, 1998, **46**, 1051–1059.
 - 74 A. Khodavirdipour, M. Piri, S. Jabbari, S. Keshavarzi, R. Safaralizadeh and M. Y. Alikhani, Apoptosis Detection Methods in Diagnosis of Cancer and Their Potential Role in Treatment: Advantages and Disadvantages: a Review, *J. Gastrointest. Cancer*, 2021, **52**, 422–430.
 - 75 D. E. Ehrnhoefer, N. H. Skotte, J. Savill, Y. T. N. Nguyen, S. Ladha, L.-P. Cao, E. Dullaghan and M. R. Hayden, A Quantitative Method for the Specific Assessment of Caspase-6 Activity in Cell Culture, *PLoS One*, 2011, **6**, e27680.
 - 76 K. M. Groborz, M. Kalinka, J. Grzyska, S. Kołt, S. J. Snipas and M. Pořba, Selective chemical reagents to investigate the role of caspase 6 in apoptosis in acute leukemia T cells, *Chem. Sci.*, 2023, **14**, 2289–2302.
 - 77 M. R. Mahib, S. Hosojima, H. Kushiya, T. Kinoshita, T. Shiroishi, T. Suda and K. Tsuchiya, Caspase-7 mediates caspase-1-induced apoptosis independently of Bid, *Microbiol. Immunol.*, 2020, **64**, 143–152.
 - 78 M. Zheng, R. Karki, P. Vogel and T.-D. Kanneganti, Caspase-6 Is a Key Regulator of Innate Immunity, Inflammasome Activation, and Host Defense, *Cell*, 2020, **181**, 674–687.e13.
 - 79 J. G. Walsh, S. P. Cullen, C. Sheridan, A. U. Lüthi, C. Gerner and S. J. Martin, Executioner caspase-3 and caspase-7 are functionally distinct proteases, *Proc. Natl. Acad. Sci.*, 2008, **105**, 12815–12819.
 - 80 G. Serrano-Heras, I. Díaz-Maroto, B. Castro-Robles, B. Carrión, A. B. Perona-Moratalla, J. Gracia, S. Arteaga, F. Hernández-Fernández, J. García-García, O. Ayo-Martín and T. Segura, Isolation and Quantification of Blood Apoptotic Bodies, a Non-invasive Tool to Evaluate Apoptosis in Patients with Ischemic Stroke and Neurodegenerative Diseases, *Biol. Proced. Online*, 2020, **22**, 17.
 - 81 L. Jiang, S. Paone, S. Caruso, G. K. Atkin-Smith, T. K. Phan, M. D. Hulett and I. K. H. Poon, Determining the contents and cell origins of apoptotic bodies by flow cytometry, *Sci. Rep.*, 2017, **7**, 14444.



- 82 J. D. Lane, V. J. Allan and P. G. Woodman, Active relocation of chromatin and endoplasmic reticulum into blebs in late apoptotic cells, *J. Cell Sci.*, 2005, **118**, 4059–4071.
- 83 T. K. Phan, I. K. Poon and G. K. Atkin-Smith, Detection and Isolation of Apoptotic Bodies to High Purity, *J. Visualized Exp.*, 2018, DOI: [10.3791/58317](https://doi.org/10.3791/58317).
- 84 M. M. Garrity, L. J. Burgart, D. L. Riehle, E. M. Hill, T. J. Sebo and T. Witzig, Identifying and Quantifying Apoptosis: Navigating Technical Pitfalls, *Mod. Pathol.*, 2003, **16**, 389–394.
- 85 R. Subiros-Funosas, L. Mendive-Tapia, J. Sot, J. D. Pound, N. Barth, Y. Varela, F. M. Goñi, M. Paterson, C. D. Gregory, F. Albericio, I. Dransfield, R. Lavilla and M. Vendrell, A Trp-BODIPY cyclic peptide for fluorescence labelling of apoptotic bodies, *Chem. Commun.*, 2017, **53**, 945–948.
- 86 P. Hauser, S. Wang and V. V. Didenko, Apoptotic Bodies: Selective Detection in Extracellular Vesicles, *Methods Mol. Biol.*, 2017, **1554**, 193–200.
- 87 M. Archana, M. Bastian, T. Yogesh and K. Kumaraswamy, Various methods available for detection of apoptotic cells—A review, *Indian J. Cancer*, 2013, **50**, 274.
- 88 E. Boero, I. Brinkman, T. Juliet, E. van Yperen, J. A. G. van Strijp, S. H. M. Rooijackers and K. P. M. van Kessel, Use of Flow Cytometry to Evaluate Phagocytosis of Staphylococcus aureus by Human Neutrophils, *Front. Immunol.*, 2021, DOI: [10.3389/fimmu.2021.635825](https://doi.org/10.3389/fimmu.2021.635825).
- 89 J. J. Gaforio, M. J. Serrano, I. Algarra, E. Ortega and G. Alvarez de Cienfuegos, Phagocytosis of apoptotic cells assessed by flow cytometry using 7-Aminoactinomycin D, *Cytometry*, 2002, **49**, 8–11.
- 90 Y. Horii, S. Matsuda, K. Watari, A. Nagasaka, H. Kurose and M. Nakaya, An Assay to Determine Phagocytosis of Apoptotic Cells by Cardiac Macrophages and Cardiac Myofibroblasts, *Bio-Protoc.*, 2017, DOI: [10.21769/BioProtoc.2553](https://doi.org/10.21769/BioProtoc.2553).
- 91 K. Neikirk, Z. Vue, P. Katti, B. I. Rodriguez, S. Omer, J. Shao, T. Christensen, E. Garza Lopez, A. Marshall, C. B. Palavicino-Maggio, J. Ponce, A. F. Alghanem, L. Vang, T. Barongan, H. K. Beasley, T. Rodman, D. Stephens, M. Mungai, M. Correia, V. Exil, S. Damo, S. A. Murray, A. Crabtree, B. Glancy, R. O. Pereira, E. D. Abel and A. O. Hinton, Systematic Transmission Electron Microscopy-Based Identification and 3D Reconstruction of Cellular Degradation Machinery, *Adv. Biol.*, 2023, 2200221.
- 92 M. Guo, B. Lu, J. Gan, S. Wang, X. Jiang and H. Li, Apoptosis detection: a purpose-dependent approach selection, *Cell Cycle*, 2021, **20**, 1033–1040.
- 93 M. Bottone, G. Santin, F. Aredia, G. Bernocchi, C. Pellicciari and A. Scovassi, Morphological Features of Organelles during Apoptosis: An Overview, *Cells*, 2013, **2**, 294–305.
- 94 C. dos S. Vergilio and E. J. T. De Melo, Autophagy, apoptosis and organelle features during cell exposure to cadmium, *Biocell*, 2013, **37**, 45–54.
- 95 M. M. Martinez, R. D. Reif and D. Pappas, Detection of apoptosis: A review of conventional and novel techniques, *Anal. Methods*, 2010, **2**, 996.
- 96 N. J. McCarthy, M. K. B. Whyte, C. S. Gilbert and G. I. Evan, Inhibition of Ced-3/ICE-related Proteases Does Not Prevent Cell Death Induced by Oncogenes, DNA Damage, or the Bcl-2 Homologue Bak, *J. Cell Biol.*, 1997, **136**, 215–227.
- 97 J. F. R. Kerr, C. M. Winterford and B. V. Harmon, Apoptosis. Its significance in cancer and cancer Therapy, *Cancer*, 1994, **73**, 2013–2026.
- 98 H. Hug, M. Los, W. Hirt and K.-M. Debatin, Rhodamine 110-Linked Amino Acids and Peptides as Substrates To Measure Caspase Activity upon Apoptosis Induction in Intact Cells, *Biochemistry*, 1999, **38**, 13906–13911.
- 99 H. H. Zhang, B. Zhang, C. Di, M. C. Ali, J. Chen, Z. Li, J. Si, H. H. Zhang and H. Qiu, Label-free fluorescence imaging of cytochrome c in living systems and anti-cancer drug screening with nitrogen doped carbon quantum dots, *Nanoscale*, 2018, **10**, 5342–5349.
- 100 C. B. L. Campos, B. A. Paim, R. G. Cosso, R. F. Castilho, H. Rottenberg and A. E. Vercesi, Method for monitoring of mitochondrial cytochrome c release during cell death: Immunodetection of cytochrome c by flow cytometry after selective permeabilization of the plasma membrane, *Cytometry, Part A*, 2006, **69**, 515–523.
- 101 P. D. Allen and A. C. Newland, Electrophoretic DNA analysis for the detection of apoptosis, *Mol. Biotechnol.*, 1998, **9**, 247–251.
- 102 Y. RahbarSaadat, N. Saeidi, S. Zununi Vahed, A. Barzegari and J. Barar, An update to DNA ladder assay for apoptosis detection, *BiolImpacts*, 2017, **5**, 25–28.
- 103 M. H. Naseri, M. Mahdavi, J. Davoodi, S. H. Tackallou, M. Goudarzvand and S. H. Neishabouri, Up regulation of Bax and down regulation of Bcl2 during 3-NC mediated apoptosis in human cancer cells, *Cancer Cell Int.*, 2015, **15**, 55.
- 104 G. Koopman, C. P. Reutelingsperger, G. A. Kuijten, R. M. Keehnen, S. T. Pals and M. H. van Oers, Annexin V for flow cytometric detection of phosphatidylserine expression on B cells undergoing apoptosis, *Blood*, 1994, **84**, 1415–1420.
- 105 J. Fried, A. G. Perez and B. D. Clarkson, Flow cytofluorometric analysis of cell cycle distributions using propidium iodide. Properties of the method and mathematical analysis of the data, *J. Cell Biol.*, 1976, **71**, 172–181.
- 106 A. M. Rieger, K. L. Nelson, J. D. Konowalchuk and D. R. Barreda, Modified Annexin V/Propidium Iodide Apoptosis Assay For Accurate Assessment of Cell Death, *J. Vis. Exp.*, 2011, DOI: [10.3791/2597](https://doi.org/10.3791/2597).
- 107 D. Wlodkowic, J. Skommer and Z. Darzynkiewicz, Flow cytometry-based apoptosis detection, *Methods Mol. Biol.*, 2009, **559**, 19–32.
- 108 S. Pietkiewicz, J. H. Schmidt and I. N. Lavrik, Quantification of apoptosis and necroptosis at the single cell level by a combination of Imaging Flow Cytometry with classical



- Annexin V/propidium iodide staining, *J. Immunol. Methods*, 2015, **423**, 99–103.
- 109 T. Akiyama, T. Miyazaki, P. Bouillet, K. Nakamura, A. Strasser and S. Tanaka, *In vitro* and *in vivo* assays for osteoclast apoptosis, *Biol. Proced. Online*, 2005, **7**, 48–59.
 - 110 S. Fayzullina and L. J. Martin, Detection and Analysis of DNA Damage in Mouse Skeletal Muscle *In Situ* Using the TUNEL Method, *J. Visualized Exp.*, 2014, DOI: [10.3791/52211](https://doi.org/10.3791/52211).
 - 111 J. T. Li, K. Bian, A. L. Zhang, D. H. Kim, W. W. Ashley, R. Nath, I. McCutcheon, B. Fang and F. Murad, Targeting different types of human meningioma and glioma cells using a novel adenoviral vector expressing GFP-TRAIL fusion protein from hTERT promoter, *Cancer Cell Int.*, 2011, **11**, 35.
 - 112 K. Kyrylova, S. Kyryachenko, M. Leid and C. Kiousi, Detection of apoptosis by TUNEL assay, *Methods Mol. Biol.*, 2012, 41–47.
 - 113 W. Gorczyca, S. Bruno, R. Darzynkiewicz, J. Gong and Z. Darzynkiewicz, DNA Strand Breaks Occurring During Apoptosis - Their Early Insitu Detection by the Terminal Deoxynucleotidyl Transferase and Nick Translation Assays and Prevention by Serine Protease Inhibitors, *Int. J. Oncol.*, 1992, DOI: [10.3892/ijfo.1.6.639](https://doi.org/10.3892/ijfo.1.6.639).
 - 114 B. G. Kraupp, B. Ruttkay-Nedecky, H. Koudelka, K. Bukowska, W. Bursch and R. Schulte-Hermann, *In situ* detection of fragmented DNA (tunel assay) fails to discriminate among apoptosis, necrosis, and autolytic cell death: A cautionary note, *Hepatology*, 1995, **21**, 1465–1468.
 - 115 H. K. Choi, D. Yessayan, H. J. Choi, E. Schellenberger, A. Bogdanov, L. Josephson, R. Weissleder and V. Ntziachristos, Quantitative Analysis of Chemotherapeutic Effects in Tumors Using *In Vivo* Staining and Correlative Histology, *Anal. Cell. Pathol.*, 2005, **27**, 183–190.
 - 116 S. K. Ray, K. E. Schaecher, D. C. Shields, E. L. Hogan and N. L. Banik, Combined TUNEL and double immunofluorescent labeling for detection of apoptotic mononuclear phagocytes in autoimmune demyelinating disease, *Brain Res. Protoc.*, 2000, **5**, 305–311.
 - 117 S. Shalini, L. Dorstyn, S. Dawar and S. Kumar, Old, new and emerging functions of caspases, *Cell Death Differ.*, 2015, **22**, 526–539.
 - 118 L. C. Crowley and N. J. Waterhouse, Detecting Cleaved Caspase-3 in Apoptotic Cells by Flow Cytometry, *Cold Spring Harb. Protoc.*, 2016, DOI: [10.1101/pdb.prot087312](https://doi.org/10.1101/pdb.prot087312).
 - 119 A. U. Lüthi and S. J. Martin, The CASBAH: a searchable database of caspase substrates, *Cell Death Differ.*, 2007, **14**, 641–650.
 - 120 O. Julien and J. A. Wells, Caspases and their substrates, *Cell Death Differ.*, 2017, **24**, 1380–1389.
 - 121 J. Zhang, X. Wang, W. Cui, W. Wang, H. Zhang, L. Liu, Z. Zhang, Z. Li, G. Ying, N. Zhang and B. Li, Visualization of caspase-3-like activity in cells using a genetically encoded fluorescent biosensor activated by protein cleavage, *Nat. Commun.*, 2013, **4**, 2157.
 - 122 Z. Zhao, B. He and B. Z. Tang, Aggregation-induced emission of siloles, *Chem. Sci.*, 2015, **6**, 5347–5365.
 - 123 J. Luo, Z. Xie, J. W. Y. Lam, L. Cheng, B. Z. Tang, H. Chen, C. Qiu, H. S. Kwok, X. Zhan, Y. Liu, D. Zhu and B. Z. Tang, Aggregation-induced emission of 1-methyl-1,2,3,4,5-pentaphenylsilole, *Chem. Commun.*, 2001, 1740–1741.
 - 124 H. Shi, R. T. K. Kwok, J. Liu, B. Xing, B. Z. Tang and B. Liu, Real-Time Monitoring of Cell Apoptosis and Drug Screening Using Fluorescent Light-Up Probe with Aggregation-Induced Emission Characteristics, *J. Am. Chem. Soc.*, 2012, **134**, 17972–17981.
 - 125 H. Jia, Y. Song, B. Huang, W. Ge and K. Q. Luo, Engineered Sensor Zebrafish for Fast Detection and Real-Time Tracking of Apoptosis at Single-Cell Resolution in Live Animals, *ACS Sens.*, 2020, **5**, 823–830.
 - 126 J. Hickson, S. Ackler, D. Klaubert, J. Bouska, P. Ellis, K. Foster, A. Oleksijew, L. Rodriguez, S. Schlessinger, B. Wang and D. Frost, Noninvasive molecular imaging of apoptosis *in vivo* using a modified firefly luciferase substrate, Z-DEVD-aminoluciferin, *Cell Death Differ.*, 2010, **17**, 1003–1010.
 - 127 N. S. Chandel, Mitochondria as signaling organelles, *BMC Biol.*, 2014, **12**, 34.
 - 128 G. Kroemer, L. Galluzzi and C. Brenner, Mitochondrial Membrane Permeabilization in Cell Death, *Physiol. Rev.*, 2007, **87**, 99–163.
 - 129 H. L. Tang, H. M. Tang, K. H. Mak, S. Hu, S. S. Wang, K. M. Wong, C. S. T. Wong, H. Y. Wu, H. T. Law, K. Liu, C. C. Talbot, W. K. Lau, D. J. Montell and M. C. Fung, Cell survival, DNA damage, and oncogenic transformation after a transient and reversible apoptotic response, *Mol. Biol. Cell*, 2012, **23**, 2240–2252.
 - 130 C. Garrido, L. Galluzzi, M. Brunet, P. E. Puig, C. Didelot and G. Kroemer, Mechanisms of cytochrome c release from mitochondria, *Cell Death Differ.*, 2006, **13**, 1423–1433.
 - 131 J. Zhu, H. Chu, J. Shen, C. Wang and Y. Wei, Nitrogen and fluorine co-doped green fluorescence carbon dots as a label-free probe for determination of cytochrome c in serum and temperature sensing, *J. Colloid Interface Sci.*, 2021, **586**, 683–691.
 - 132 K. Balasubramanian, B. Mirnikjoo and A. J. Schroit, Regulated Externalization of Phosphatidylserine at the Cell Surface, *J. Biol. Chem.*, 2007, **282**, 18357–18364.
 - 133 D. L. Bratton, V. A. Fadok, D. A. Richter, J. M. Kailey, L. A. Guthrie and P. M. Henson, Appearance of Phosphatidylserine on Apoptotic Cells Requires Calcium-mediated Nonspecific Flip-Flop and Is Enhanced by Loss of the Aminophospholipid Translocase, *J. Biol. Chem.*, 1997, **272**, 26159–26165.
 - 134 R. Wang and D. Fang, Detection of phosphatidylserine in the plasma membrane of single apoptotic cells using electrochemiluminescence, *RSC Adv.*, 2017, **7**, 12969–12972.
 - 135 J. F. Tait, C. Smith, Z. Levashova, B. Patel, F. G. Blankenberg and J.-L. Vanderheyden, Improved detection of cell death *in vivo* with annexin V radiolabeled by site-specific methods, *J. Nucl. Med.*, 2006, **47**, 1546–1553.



- 136 K. Ogawa and M. Aoki, Radiolabeled Apoptosis Imaging Agents for Early Detection of Response to Therapy, *Sci. World J.*, 2014, **2014**, 1–11.
- 137 I. Shlomovitz, M. Speir and M. Gerlic, Flipping the dogma – phosphatidylserine in non-apoptotic cell death, *Cell Commun. Signaling*, 2019, **17**, 139.
- 138 S. Riedl, B. Rinner, M. Asslaber, H. Schaidler, S. Walzer, A. Novak, K. Lohner and D. Zweglick, In search of a novel target — Phosphatidylserine exposed by non-apoptotic tumor cells and metastases of malignancies with poor treatment efficacy, *Biochim. Biophys. Acta, Biomembr.*, 2011, **1808**, 2638–2645.
- 139 S. Nagata, J. Suzuki, K. Segawa and T. Fujii, Exposure of phosphatidylserine on the cell surface, *Cell Death Differ.*, 2016, **23**, 952–961.
- 140 M. A. Savitskaya, I. I. Zakharov and G. E. Onishchenko, Apoptotic Features in Non-Apoptotic Processes, *Biochem*, 2022, **87**, 191–206.
- 141 S. F. G. Alain Pulfer, D. U. Pizzagalli, P. A. Gagliardi, L. Hinderling, P. Lopez, R. Zayats, P. Carrillo-Barberá, P. Antonello, M. Palomino-Segura, A. Giusti, M. Thelen, L. M. Gambardella, T. T. Murooka and A. Vie, Transformer-based spatial-temporal detection of apoptotic cell death in live-cell imaging, *bioRxiv*, 2023, preprint, DOI: [10.1101/2022.11.23.517318](https://doi.org/10.1101/2022.11.23.517318).
- 142 J. Verduijn, L. Van der Meeren, D. V. Krysko and A. G. Skirtach, Deep learning with digital holographic microscopy discriminates apoptosis and necroptosis, *Cell Death Discovery*, 2021, **7**, 229.
- 143 J. Jin, K. Schorpp, D. Samaga, K. Unger, K. Hadian and B. R. Stockwell, Machine Learning Classifies Ferroptosis and Apoptosis Cell Death Modalities with TFR1 Immunostaining, *ACS Chem. Biol.*, 2022, **17**, 654–660.
- 144 L. Nonnenmacher, S. Hasslacher, J. Zimmermann, G. Karpel-Massler, K. La Ferla-Brühl, S. E. Barry, T. Burster, M. D. Siegelin, O. Brühl, M.-E. Halatsch, K.-M. Debatin and M.-A. Westhoff, Cell Death Induction in Cancer Therapy - Past, Present, and Future, *Crit. Rev. Oncog.*, 2016, **21**, 253–267.
- 145 J. C. Reed, Apoptosis-targeted therapies for cancer, *Cancer Cell*, 2003, **3**, 17–22.
- 146 W. P. Bozza, J. D. Twomey, S.-R. Kim and B. Zhang, Detection of Apoptosis: From Bench Side to Clinical Practice, *Apoptosis Methods in Toxicology, Methods in Pharmacology and Toxicology*, ed. Muganda PM, Springer Science+Business Media, New York, 2016, Chapter 2, pp. 13–29, DOI: [10.1007/978-1-4939-3588-8_2](https://doi.org/10.1007/978-1-4939-3588-8_2).
- 147 F. Zhang, L. Zhu, G. Liu, N. Hida, G. Lu, H. S. Eden, G. Niu and X. Chen, Multimodality Imaging of Tumor Response to Doxil, *Theranostics*, 2011, **1**, 302–309.
- 148 H. Wang, S. Galbán, R. Wu, B. M. Bowman, A. Witte, K. Vetter, C. J. Galbán, B. D. Ross, K. R. Cho and A. Rehemtulla, Molecular Imaging Reveals a Role for AKT in Resistance to Cisplatin for Ovarian Endometrioid Adenocarcinoma, *Clin. Cancer Res.*, 2013, **19**, 158–169.
- 149 B. Banihashemi, R. Vlad, B. Debeljevic, A. Giles, M. C. Kolios and G. J. Czarnota, Ultrasound Imaging of Apoptosis in Tumor Response: Novel Preclinical Monitoring of Photodynamic Therapy Effects, *Cancer Res.*, 2008, **68**, 8590–8596.
- 150 G. J. Czarnota, M. C. Kolios, J. Abraham, M. Portnoy, F. P. Ottensmeyer, J. W. Hunt and M. D. Sherar, Ultrasound imaging of apoptosis: high-resolution non-invasive monitoring of programmed cell death *in vitro*, *in situ* and *in vivo*, *Br. J. Cancer*, 1999, **81**, 520–527.
- 151 M. Kumar, N. R. Jagannathan, V. Seenu, S. N. Dwivedi, P. K. Julka and G. K. Rath, Monitoring the therapeutic response of locally advanced breast cancer patients: Sequential *in vivo* proton MR spectroscopy study, *J. Magn. Reson. Imaging*, 2006, **24**, 325–332.
- 152 N. R. Jagannathan, M. Singh, V. Govindaraju, P. Raghunathan, O. Coshic, P. K. Julka and G. K. Rath, Volume localized *in vivo* proton MR spectroscopy of breast carcinoma: variation of water-fat ratio in patients receiving chemotherapy, *NMR Biomed.*, 1998, **11**, 414–422.
- 153 M. R. Hight, Y.-Y. Cheung, M. L. Nickels, E. S. Dawson, P. Zhao, S. Saleh, J. R. Buck, D. Tang, M. K. Washington, R. J. Coffey and H. C. Manning, A Peptide-Based Positron Emission Tomography Probe for *In Vivo* Detection of Caspase Activity in Apoptotic Cells, *Clin. Cancer Res.*, 2014, **20**, 2126–2135.
- 154 C.-F. Xia, G. Chen, U. Gangadharmath, L. F. Gomez, Q. Liang, F. Mu, V. P. Mocharla, H. Su, A. K. Szardenings, J. C. Walsh, T. Zhao and H. C. Kolb, *In Vitro* and *In Vivo* Evaluation of the Caspase-3 Substrate-Based Radiotracer [¹⁸F]-CP18 for PET Imaging of Apoptosis in Tumors, *Mol. Imaging Biol.*, 2013, **15**, 748–757.
- 155 F. Stuker, J. Ripoll and M. Rudin, Fluorescence molecular tomography: principles and potential for pharmaceutical research, *Pharmaceutics*, 2011, **3**, 229–274.
- 156 M. Cazzaniga, A. DeCensi, G. Pruneri, M. Puntoni, L. Bottiglieri, C. Varricchio, A. Guerrieri-Gonzaga, O. D. Gentilini, G. Pagani, P. Dell'Orto, M. Lazzeroni, D. Serrano, G. Viale and B. Bonanni, The effect of metformin on apoptosis in a breast cancer presurgical trial, *Br. J. Cancer*, 2013, **109**, 2792–2797.
- 157 T. Etheridge, J. Liou, T. M. Downs, E. J. Abel, K. A. Richards and D. F. Jarrard, The impact of celecoxib on outcomes in advanced prostate cancer patients undergoing androgen deprivation therapy, *Am. J. Clin. Exp. Urol.*, 2018, **6**, 123–132.
- 158 C. Betterle and R. Zanchetta, The immunofluorescence techniques in the diagnosis of endocrine autoimmune diseases, *Autoimmun. Highlights*, 2012, **3**, 67–78.
- 159 K. Bivén, H. Erdal, M. Hägg, T. Ueno, R. Zhou, M. Lynch, B. Rowley, J. Wood, C. Zhang, M. Toi, M. C. Shoshan and S. Linder, A novel assay for discovery and characterization of pro-apoptotic drugs and for monitoring apoptosis in patient sera, *Apoptosis*, 2003, **8**, 263–268.
- 160 S. Holdenrieder, P. Stieber, J. Von Pawel, H. Raith, D. Nagel, K. Feldmann and D. Seidel, Early and Specific Prediction of the Therapeutic Efficacy in Non-Small Cell Lung Cancer Patients by Nucleosomal DNA and Cytokeratin-19 Fragments, *Ann. N. Y. Acad. Sci.*, 2006, **1075**, 244–257.



- 161 G. Kramer, H. Erdal, H. J. M. M. Mertens, M. Nap, J. Mauermann, G. Steiner, M. Marberger, K. Bivén, M. C. Shoshan and S. Linder, Differentiation between cell death modes using measurements of different soluble forms of extracellular cytokeratin 18, *Cancer Res.*, 2004, **64**, 1751–1756.
- 162 A. Corlu, R. Choe, T. Durduran, M. A. Rosen, M. Schweiger, S. R. Arridge, M. D. Schnall and A. G. Yodh, Three-dimensional *in vivo* fluorescence diffuse optical tomography of breast cancer in humans, *Opt. Express*, 2007, **15**, 6696.
- 163 R. J. Antcliff, M. R. Stanford, D. S. Chauhan, E. M. Graham, D. J. Spalton, J. S. Shilling, T. J. Ffytche and J. Marshall, Comparison between optical coherence tomography and fundus fluorescein angiography for the detection of cystoid macular edema in patients with uveitis, *Ophthalmology*, 2000, **107**, 593–599.
- 164 J. M. Critchfield, M. K. Racke, J. C. Zúñiga-Pflücker, B. Cannella, C. S. Raine, J. Goverman and M. J. Lenardo, T Cell Deletion in High Antigen Dose Therapy of Autoimmune Encephalomyelitis, *Science*, 1994, **263**, 1139–1143.
- 165 T. Head, P. Dau, S. Duffort, P. Daftarian, P. M. Joshi, R. Vazquez-Padron, S. K. Deo and S. Daunert, An enhanced bioluminescence-based Annexin V probe for apoptosis detection *in vitro* and *in vivo*, *Cell Death Dis.*, 2017, **8**, e2826.
- 166 Y. Wang, B. Zhang, W. Liu, Y. Dai, Y. Shi, Q. Zeng and F. Wang, Noninvasive bioluminescence imaging of the dynamics of sanguinarine induced apoptosis *via* activation of reactive oxygen species, *Oncotarget*, 2016, **7**, 22355–22367.
- 167 Y. Zhang, J. Hu, M. Yu, Z. Wang, H. Qing, H. Fu, L. Yuan, F. Li and S. Zhao, A novel BRET based genetic coded biosensor for apoptosis detection at deep tissue level in live animal, *Apoptosis*, 2021, **26**, 628–638.
- 168 S. Tsuboi and T. Jin, Bioluminescence Resonance Energy Transfer (BRET)-coupled Annexin V-functionalized Quantum Dots for Near-Infrared Optical Detection of Apoptotic Cells, *ChemBioChem*, 2017, **18**, 2231–2235.
- 169 S. B. Nicholls, J. Chu, G. Abbruzzese, K. D. Tremblay and J. A. Hardy, Mechanism of a Genetically Encoded Dark-to-Bright Reporter for Caspase Activity, *J. Biol. Chem.*, 2011, **286**, 24977–24986.
- 170 X. Hu, H. Li, X. Huang, Z. Zhu, H. Zhu, Y. Gao, Z. Zhu and H. Chen, Cell membrane-coated gold nanoparticles for apoptosis imaging in living cells based on fluorescent determination, *Microchim. Acta*, 2020, **187**, 175.
- 171 P. Wu, S. B. Nicholls and J. A. Hardy, A Tunable, Modular Approach to Fluorescent Protease-Activated Reporters, *Biophys. J.*, 2013, **104**, 1605–1614.
- 172 K. Martínez-Lagunas, Y. Yamaguchi, C. Becker, C. Geisen, M. C. DeRuiter, M. Miura, B. K. Fleischmann and M. Hesse, In vivo detection of programmed cell death during mouse heart development, *Cell Death Differ.*, 2020, **27**, 1398–1414.
- 173 S. Tsuboi and T. Jin, *In Vitro* and *In Vivo* Fluorescence Imaging of Antibody–Drug Conjugate-Induced Tumor Apoptosis Using Annexin V–EGFP Conjugated Quantum Dots, *ACS Omega*, 2022, **7**, 2105–2113.
- 174 H. Kim, H. Y. Kim, E. Y. Lee, B. K. Choi, H. Jang and Y. Choi, A Quenched Annexin V-Fluorophore for the Real-Time Fluorescence Imaging of Apoptotic Processes *In Vitro* and *In Vivo*, *Adv. Sci.*, 2020, DOI: [10.1002/advs.202002988](https://doi.org/10.1002/advs.202002988).
- 175 S. Le Gac, I. Vermes and A. van den Berg, Quantum Dots Based Probes Conjugated to Annexin V for Photostable Apoptosis Detection and Imaging, *Nano Lett.*, 2006, **6**, 1863–1869.
- 176 Y. Wang, X. Hu, J. Weng, J. Li, Q. Fan, Y. Zhang and D. Ye, A Photoacoustic Probe for the Imaging of Tumor Apoptosis by Caspase-Mediated Macrocyclization and Self-Assembly, *Angew. Chem., Int. Ed.*, 2019, **58**, 4886–4890.
- 177 H. Bai, Y. Wang, Y. Hu and D. Ye, A caspase-3-activatable bimodal probe for photoacoustic and magnetic resonance imaging of tumor apoptosis *in vivo*, *Biosens. Bioelectron.*, 2022, **216**, 114648.
- 178 A. Jhunjhunwala, J. Kim, K. P. Kubelick, C. R. Ethier and S. Y. Emelianov, *Vivo* Photoacoustic Monitoring of Stem Cell Location and Apoptosis with Caspase-3-Responsive Nanosensors, *ACS Nano*, 2023, **17**, 17931–17945.
- 179 A. Nishie, O. Togao, C. Tamura, M. Yamato, K. Ichikawa, S. Nohara, Y. Ito, N. Kato, S. Yoshise and H. Honda, *In Vitro* and *In Vivo* Detection of Drug-induced Apoptosis Using Annexin V-conjugated Ultrasmall Superparamagnetic Iron Oxide (USPIO): A Pilot Study, *Magn. Reson. Med. Sci.*, 2019, **18**, 142–149.
- 180 Q.-D. Nguyen, G. Smith, M. Glaser, M. Perumal, E. Årstad and E. O. Aboagye, Positron emission tomography imaging of drug-induced tumor apoptosis with a caspase-3/7 specific [¹⁸F]-labeled isatin sulfonamide, *Proc. Natl. Acad. Sci.*, 2009, **106**, 16375–16380.
- 181 F. Bulat, F. Hesse, D.-E. Hu, S. Ros, C. Willminton-Holmes, B. Xie, B. Attili, D. Soloviev, F. Aigbirhio, F. J. Leeper, K. M. Brindle and A. A. Neves, ¹⁸F-C2Am: a targeted imaging agent for detecting tumor cell death *in vivo* using positron emission tomography, *EJNMMI Res.*, 2020, **10**, 151.
- 182 Y. Kuge, S. Zhao, T. Takei and N. Tamaki, Molecular Imaging of Apoptosis with Radio-Labeled Annexin A5 Focused on the Evaluation of Tumor Response to Chemotherapy, *Anticancer. Agents Med. Chem.*, 2009, **9**, 1003–1011.
- 183 M. M. Pasternak, A. Sadeghi-Naini, S. M. Ranieri, A. Giles, M. L. Oelze, M. C. Kolios and G. J. Czarnota, High-frequency ultrasound detection of cell death: Spectral differentiation of different forms of cell death *in vitro*, *Oncoscience*, 2016, **3**, 275–287.
- 184 R. M. Vlad, N. M. Alajez, A. Giles, M. C. Kolios and G. J. Czarnota, Quantitative Ultrasound Characterization of Cancer Radiotherapy Effects *In Vitro*, *Int. J. Radiat. Oncol.*, 2008, **72**, 1236–1243.

