

Cite this: *Dalton Trans.*, 2024, **53**,  
8429

# Layered rare-earth hydroxides as multi-modal medical imaging probes: particle size optimisation and compositional exploration†

Margarita Strimaite,<sup>a,b</sup> Connor J. R. Wells,<sup>c</sup> Timothy J. Prior,<sup>d</sup>  
Daniel J. Stuckey,<sup>b</sup> Jack A. Wells,<sup>b</sup> Gemma-Louise Davies<sup>\*c,e</sup> and  
Gareth R. Williams<sup>†a</sup>

Recently, layered rare-earth hydroxides (LRHs) have received growing attention in the field of theranostics. We have previously reported the hydrothermal synthesis of layered terbium hydroxide (LTbH), which exhibited high biocompatibility, reversible uptake of a range of model drugs, and release-sensitive phosphorescence. Despite these favourable properties, LTbH particles produced by the reported method suffered from poor size-uniformity ( $670 \pm 564$  nm), and are thus not suitable for therapeutic applications. To ameliorate this issue, we first derive an optimised hydrothermal synthesis method to generate LTbH particles with a high degree of homogeneity and reproducibility, within a size range appropriate for *in vivo* applications ( $152 \pm 59$  nm,  $n = 6$ ). Subsequently, we apply this optimised method to synthesise a selected range of LRH materials (R = Pr, Nd, Gd, Dy, Er, Yb), four of which produced particles with an average size under 200 nm (Pr, Nd, Gd, and Dy) without the need for further optimisation. Finally, we incorporate Gd and Tb into LRHs in varying molar ratios (1 : 3, 1 : 1, and 3 : 1) and assess the combined magnetic relaxivity and phosphorescence properties of the resultant LRH materials. The lead formulation, LGd<sub>1.41</sub>Tb<sub>0.59</sub>H, was demonstrated to significantly shorten the  $T_2$  relaxation time of water ( $r_2 = 52.06 \text{ mM}^{-1} \text{ s}^{-1}$ ), in addition to exhibiting a strong phosphorescence signal (over twice that of the other LRH formulations, including previously reported LTbH), therefore holding great promise as a potential multi-modal medical imaging probe.

Received 6th February 2024,

Accepted 19th April 2024

DOI: 10.1039/d4dt00371c

rsc.li/dalton

## Introduction

Layered rare-earth hydroxides (LRHs) have the general formula  $[\text{R}_2(\text{OH})_{(6-m)}](\text{A}_{(m/n)}^{n-}) \cdot y\text{H}_2\text{O}$ , where R is a rare-earth metal ion, and A is an intercalated counterion. They are structurally similar to the more prominent class of materials known as the layered double hydroxides (LDHs), which are based around divalent/trivalent metal ions (commonly  $\text{Zn}^{2+}$ ,  $\text{Mg}^{2+}$ ,  $\text{Al}^{3+}$ ) rather than rare-earth ions. Owing chiefly to their anion-

exchange ability and low cost of production, the LDH class of materials have enjoyed substantial attention across a range of applications including pollutant sequestration/remediation,<sup>2,3</sup> catalysis,<sup>4</sup> electrode materials,<sup>5</sup> and sensing,<sup>6</sup> to name a few.

On the other hand, the anion-exchange ability coupled with the presence of rare-earth cations within LRHs lend themselves particularly well to theranostic applications. The partially filled 4f orbitals of rare-earth ions give rise to a rich range of emissions which can be exploited for photoluminescence imaging, and, particularly in the case of  $\text{Gd}^{3+}$ , exploitable magnetic properties which form the basis for magnetic resonance imaging contrast. The positively charged layered structure of LRHs enables them to reversibly uptake anionic guest species. These guest moieties may be selected to exert a therapeutic effect, as well as to modify the overall contrast properties of the parent LRH material. Moreover, LRH materials have previously been shown to be stable at physiological pH<sup>1</sup> and well-tolerated in cytotoxicity studies<sup>7,8</sup> (though *in vivo* applications of LRHs are thus far extremely limited in scope, and long-term toxicity is not yet explored). As such, LRHs are attracting increasing interest in the field of theranostics.

<sup>a</sup>UCL School of Pharmacy, University College London, 29-39 Brunswick Square, London, WC1N 1AX, UK. E-mail: g.williams@ucl.ac.uk

<sup>b</sup>UCL Centre for Advanced Biomedical Imaging, University College London, 72 Huntley Street, London, WC1E 6DD, UK

<sup>c</sup>Department of Chemistry, University College London, 20 Gordon Street, London, WC1H 0AJ, UK. E-mail: g.davies.7@bham.ac.uk

<sup>d</sup>Chemistry, School of Natural Sciences, University of Hull, Kingston Upon Hull, HU6 7RX, UK

<sup>e</sup>School of Chemistry, University of Birmingham, Edgbaston, Birmingham, B15 2TT, UK

†Electronic supplementary information (ESI) available. See DOI: <https://doi.org/10.1039/d4dt00371c>



To date, many LRH materials have been successfully synthesised, with a wide range of parent compositions and guest species such as amino acids and drug anions.<sup>9–12</sup> LRH therapeutic platforms based on Gd and Tb have been reported previously by our group;<sup>1,13</sup> despite favourable overall performance, the reported hydrothermal synthesis protocols produced inhomogeneous mixtures of nano- and microparticles, which without further optimisation are not suitable for translation towards the clinic. The inhomogeneity of previously synthesised LRH particles is problematic, as both size and geometry of particulate formulations affect their performance *in vivo*. Injectable formulations must be able to avoid rapid elimination by the body's biological mechanisms; there is evidence in the literature that larger particles (*ca.* 400 nm upwards) are more susceptible to phagocytic uptake than smaller particles (200 nm and below).<sup>14</sup> Moreover, for cancer therapy applications, particle size should be appropriate to preferentially accumulate in the leaky tumour vasculature (which may have intracellular gaps larger than 200 nm)<sup>15</sup> and not healthy endothelium (with intracellular gaps around 12–150 nm).<sup>16,17</sup> Therefore, for purposes of particle size-optimisation in this work, average particle size between 150–200 nm was targeted.

The parameters of reaction temperature, reaction time, and reactor fill volume during hydrothermal synthesis were chosen to systematically investigate in terms of their influence on resultant LTbH particle morphology. Synthesis temperature affects the viscosity, density, and relative permittivity of water, and therefore the kinetics of product formation as well as solubility of reactants/products. The length of reaction time contributes to selectivity towards the thermodynamic product, and determines the resultant particle size.<sup>18</sup> Moreover, longer aging times are associated with higher degrees of crystallinity, as has been demonstrated for structurally similar layered double hydroxide (LDH) systems.<sup>19</sup> The internal system pressure during hydrothermal synthesis is determined by the degree of fill of the reaction chamber as well as the reaction temperature. While the mechanism of formation of LRHs (and LDHs) is not well-understood at present, there is some evidence to imply it may be an oriented attachment process (whereby building blocks of LRH nucleate instantly and subsequently assemble into a 3D structure),<sup>20</sup> and similar oriented attachment processes have been reported to be influenced by the pressure during synthesis.<sup>21</sup>

The metal composition of LRH materials can be used to modulate their contrast ability. For instance, a recently reported mixed-metal (Y/Tb/Gd) LRH system exhibits magnetic resonance imaging contrast (from Gd<sup>3+</sup>) and green luminescence (from Tb<sup>3+</sup>),<sup>7</sup> and a Gd/Eu LRH shows magnetic resonance imaging contrast and red luminescence from Eu<sup>3+</sup>.<sup>11</sup> There are also reports of Gd/Tb/Eu LRH and Tb/Y LRH giving colour tuneable luminescence,<sup>22,23</sup> and a Gd-doped LTbH-NO<sub>3</sub> system showing vastly enhanced luminescence arising from the synergistic interaction of Gd<sup>3+</sup> (as well as an intercalated organic sensitiser) and Tb<sup>3+</sup>.<sup>24</sup> The present study additionally explores the production of several mixed Gd/Tb LRH systems with varying Gd:Tb ratios using the optimised hydrothermal

synthesis procedure. These systems are used to investigate how the synergistic interaction between Gd<sup>3+</sup> and Tb<sup>3+</sup> centres varies as a factor of composition, and how it influences resultant magnetic relaxivity and luminescence behaviours.

This work first explores whether it is feasible to produce homogeneous populations of LTbH, with an average particle size of *ca.* 150–200 nm, by systematically varying hydrothermal reaction conditions. Secondly, the optimised synthetic method is applied to generate LRHs based on a selection of other rare-earth elements. Lastly, LRHs combining both Tb<sup>3+</sup> and Gd<sup>3+</sup> in varying ratios are made to investigate their combined imaging contrast properties. We hypothesized that the presence of Gd would enhance the phosphorescence emanating from Tb<sup>3+</sup>, similar to previous reports.<sup>24</sup>

## Methods

### Materials

Terbium, dysprosium, erbium, and ytterbium chloride hexahydrate salts were purchased from Sigma Aldrich. Praseodymium and gadolinium chloride hexahydrate salts were purchased from Alfa Aesar, and neodymium chloride hexahydrate from Chem Cruz. All water used was deionised, and ethanol was of analytical grade.

### Hydrothermal synthesis of LTbH-Cl with systematically varied parameters

Reaction parameters were determined using the JMP Pro 14 software and are summarised in Table S1 (ESI<sup>†</sup>). An aqueous solution of TbCl<sub>3</sub>·6H<sub>2</sub>O (0.4 M, either 7.5 ml or 13.5 ml) was added dropwise to a stirring aqueous solution of NaCl/NaOH (1.4 M and 2.1 M respectively, either 2.5 ml or 4.5 ml), such that the total volume was either 10 ml or 18 ml. The resultant suspension was stirred for 10 min and transferred to a Teflon lined hydrothermal reactor (23 ml). The reactor was heated to the desired temperature (90, 100, 140, or 200 °C) for the required length of time (4, 8, 10, or 24 h), at a heating and cooling rate of 10 °C min<sup>-1</sup>, after which the precipitate was collected by centrifugation. The crude product was washed with water (2 × 30 ml) and ethanol (2 × 30 ml), and subsequently dried at 60 °C for 24 h. The product cake was briefly (<1 min) ground using a pestle and mortar to produce a powder.

### Hydrothermal synthesis of LRH-Cl (R = Pr, Nd, Gd, Dy, Er, Yb)

An aqueous solution of RCl<sub>3</sub>·6H<sub>2</sub>O (0.4 M, 13.5 ml, R = Pr, Nd, Gd, Dy, Er, Yb) was added dropwise to a stirring aqueous solution of NaCl/NaOH (1.4 M and 2.1 M respectively, 4.5 ml), such that the total volume was 18 ml. The resultant suspension was stirred for 10 min and transferred to a Teflon lined hydrothermal reactor (23 ml). The reactor was heated to 90 °C (150 °C for LYbH) for 4 h, at a heating and cooling rate of 10 °C min<sup>-1</sup>, after which the precipitate was collected by centrifugation. The product was washed with water (2 × 30 ml) and ethanol (2 × 30 ml), and subsequently dried at 60 °C for 24 h.



## Hydrothermal synthesis of Gd/Tb LRH-Cl

A solution of  $\text{TbCl}_3 \cdot 6\text{H}_2\text{O}$  ( $X$  M,  $X = 0.3, 0.2,$  or  $0.1$ ) and  $\text{GdCl}_3 \cdot 6\text{H}_2\text{O}$  ( $0.4 - X$  M) in water (13.5 ml) was added dropwise to a stirring aqueous solution of  $\text{NaCl}/\text{NaOH}$  (1.4 M and 2.1 M respectively, 4.5 ml), such that the total volume was 18 ml. The resultant suspension was stirred for 10 min and transferred to a Teflon lined hydrothermal reactor (23 ml). The reactor was heated to 90 °C for 4 h, at a heating and cooling rate of 10 °C  $\text{min}^{-1}$ , after which the white precipitate was collected by centrifugation. The product was washed with water ( $2 \times 30$  ml) and ethanol ( $2 \times 30$  ml), and subsequently dried at 60 °C for 24 h.

## Characterisation

### Powder X-ray diffraction (PXRD)

X-ray diffraction analysis was performed using a Rigaku Miniflex 600 diffractometer with  $\text{Cu K}\alpha$  radiation ( $\lambda = 1.5418$  Å). Patterns were collected over the  $2\theta$  range 3–60°, at 40 kV and 15 mA.

Further X-ray diffraction data were collected in transmission mode using finely ground sample powders sandwiched between two cellulose acetate foils. A Stoe StadiP X-ray diffractometer, operating with  $\text{Mo K}\alpha_1$  radiation ( $\lambda = 0.7093$  Å) in the  $2\theta$  range from 2 to 40° with 0.5° detector steps every 5 s (giving a step size of 0.015°) was used. The sample was rotated during the data collection.

The raw data were fitted using the Rietveld method,<sup>25</sup> within the GSAS-II suite of programmes.<sup>26</sup> In each case, the initial model employed was the structure of layered ytterbium hydroxychloride,  $\text{LYbH-Cl}$  (ICSD no. 419745).<sup>27</sup> The data were fitted using standard procedures, and the background was fitted with a 6-term shifted Chebyshev polynomial. The experimental peak shape was fitted with a pseudo-Voigt function. Unit cell parameters, a single sample-height correction, and the atomic positions for the heavy atoms (Gd, Tb, and Cl) were refined. The small positive isotropic displacement parameters obtained from the known structure were retained. The fitting of the observed data was slightly complicated by the asymmetry of the strong low angle peak around 5°.

### Scanning electron microscopy (SEM)

Samples were sputter coated with gold and imaged using a JEOL JSM-6701F field emission scanning electron microscope. Particle size analysis on the resulting images was performed manually using the ImageJ 1.52a software, and the results presented as mean  $\pm$  standard deviation. All particles were measured along their longest dimension. The number of particles measured per sample is indicated in Table S2.† Electron dispersive X-ray spectroscopy (EDXS) was performed using the same microscope, with the aid of an INCAx-Act detector (Oxford Instruments).

### Dynamic light scattering (DLS)

The hydrodynamic sizes of the LTbH particles were analysed using a Zetasizer Ultra instrument and ZS Xplorer software

(Malvern Panalytical). Suspensions of the particles (0.1 mg  $\text{ml}^{-1}$ ) were prepared by re-dispersing the samples in water by ultrasonication (5 min). Disposable folded capillary zeta cells (DTS1070, Malvern Panalytical) were used. Each suspension was measured in triplicate, and the results are given as mean  $\pm$  standard deviation.

### Elemental microanalysis

Carbon/hydrogen/nitrogen content analysis was performed using flash combustion on a Carlo Erba CE1108 elemental analyser.

### Thermogravimetric analysis (TGA)

Thermogravimetric analysis was performed using a TA Instruments Discovery TGA instrument controlled by the TA Trios software. The samples were heated from 40–900 °C at a rate of 20 °C  $\text{min}^{-1}$ , under nitrogen gas at a flow rate of 25 ml  $\text{min}^{-1}$ .

### Cytotoxicity assay

To assess the cytotoxicity of the formulations, human colorectal adenocarcinoma cells (Caco-2) and human embryonic kidney cells (HEK 293) were used. Caco-2 cells were cultured at 37 °C under 5%  $\text{CO}_2$ , in high glucose Dulbecco's modified Eagle's medium (DMEM-HG, 435 ml, Sigma Aldrich) supplemented with the following solutions: penicillin–streptomycin (5 ml, Life Technologies), L-glutamine (5 ml, Life Technologies), non-essential amino acid solution (5 ml, Life Technologies), and foetal bovine serum (50 ml, Gibco). HEK-293 cells were cultured at 37 °C under 5%  $\text{CO}_2$ , in Dulbecco's modified Eagle's medium (DMEM, 440 ml, Sigma Aldrich) supplemented with the following solutions: penicillin–streptomycin (5 ml, Life Technologies), L-glutamine (5 ml, Life Technologies), and foetal bovine serum (50 ml, Gibco). The cell cultures were passaged at 50–75% confluence by treatment with trypsin solution (0.25% in EDTA, 2 ml, Sigma Aldrich). For cell viability experiments, the passage numbers used were 73–76 (Caco-2) and 9–12 (HEK 293).

Cell viability assessments were conducted using the CellTiter-Glo™ assay, in white 96-well plates (Corning). Cell suspension was prepared at a concentration of  $5.6 \times 10^4$  cells per ml and deposited into the wells of the plate (180  $\mu\text{l}$  each). LRH suspensions in culture medium (10 mg  $\text{ml}^{-1}$ ) were prepared, and either 5 or 10  $\mu\text{l}$  of these suspensions were added directly to the cells. Samples used in this series of experiments were LRH-Cl (R = Pr, Nd, Gd, Tb, Dy, Er, and Gd/Tb).

For background luminescence measurements, wells were prepared using only cell culture medium in place of cell suspension. For control cell luminescence measurements, wells were prepared by using cell culture medium in place of LRH suspensions. The plates were then incubated at 37 °C for 24 h. After incubation, CellTiter-Glo™ 2.0 assay reagent (100  $\mu\text{l}$ , Promega) was added to each well, and left to react at room temperature for 30 min. The luminescence of the plates was read over the range 250–850 nm using a SpectraMax M2e



microplate reader (Molecular Devices). Cell viability for each well was calculated according to eqn (1):

$$\text{Viability(\%)} = \frac{(\text{Sample luminescence} - \text{background luminescence})}{(\text{Control luminescence} - \text{background luminescence})} \times 100. \quad (1)$$

Three independent experiments were performed, each with treatment conditions in triplicate, and results presented as mean  $\pm$  standard deviation.

### Time-resolved fluorescence (TRF)

Photoluminescence measurements were carried out in black 96-well plates using a SpectraMax M2e microplate reader (excitation = 250 nm, emission = 545 nm). LRH samples (*ca.* 30 mg) were suspended in water (10 ml), and 150  $\mu$ l of these suspensions was transferred to a 96-well plate. Time-resolved fluorescence measurements were taken after a delay of 50  $\mu$ s and measured up to 1450  $\mu$ s (in increments of 250  $\mu$ s).

### Inductively coupled plasma optical emission spectroscopy (ICP-OES)

Inductively coupled plasma optical emission spectroscopy (ICP-OES) was conducted on a Varian 720-ES ICP-OES instrument. Stock suspensions of samples were prepared at a concentration of *ca.* 30 mg in 10 ml distilled water. 1 ml of these stock suspensions was then acid digested using hot nitric acid and diluted with distilled water to 10 ml. The samples were then measured against a standard containing either Gd<sup>3+</sup> or Tb<sup>3+</sup> (100 mg L<sup>-1</sup> in 5% HNO<sub>3</sub> and 1000 mg L<sup>-1</sup> in 2% HNO<sub>3</sub> respectively). The standard was diluted to aliquots of 2, 4, 6, and 8 ppm to make a calibration curve.

### Magnetic resonance imaging (MRI)

Stock suspensions of LGd<sub>1.41</sub>Tb<sub>0.59</sub>H were prepared at a concentration of 10 mg in 10 ml distilled water. Serial dilutions of these stock suspensions were then performed to obtain suspensions in the concentration range 0.035–0.9 mg ml<sup>-1</sup> (equivalent to final Ln<sup>3+</sup> concentrations in the range 0.08–1.72 mM). Polypropylene well plates were cut into sections (3  $\times$  4 wells, 300  $\mu$ l well volume) to prepare imaging phantoms. Sample suspensions (300  $\mu$ l) were pipetted into each well, and sealed with a polypropylene cap. The dilution series was replicated three separate times.

Images were obtained using a preclinical MRI system (Agilent) operating at 400 MHz, 9.4 T, and 18  $^{\circ}$ C with a 38 mm quadrature driven birdcage RF coil (Rapid Biomedical). For  $T_1$ -weighted images, an inversion recovery fast spin echo acquisition was used (repetition time (TR) = 10 s, echo train length (ETL) = 4, matrix = 128  $\times$  128, inversion time (TI) = 100, 185, 343, 636, 1180, 2200, 4000, and 7500 ms). For  $T_2$ -weighted images, a multi-echo sequence was employed (TR = 4 s, echo time (TE) = *ca.* 8 ms, number of echoes (NE) = 32, matrix = 128  $\times$  128).  $T_1$  and  $T_2$  values were subsequently calculated for each region of interest using MatLab scripts.

The measured relaxation times were then used to calculate corresponding relaxation rates,  $1/T_x$  ( $x = 1$  or  $2$ , as appropriate). The observed relaxation rate can be expressed according to eqn (2), where  $r_x$  is the relaxivity, and  $[\text{Ln}^{3+}]$  is the concentration of Ln<sup>3+</sup> ions (in mM), and  $(1/T_x)_w$  is the relaxation rate of pure water.

$$\left(\frac{1}{T_x}\right)_{\text{obs}} = r_x \times [\text{Ln}^{3+}] + \left(\frac{1}{T_x}\right)_w \quad (2)$$

The Ln<sup>3+</sup> concentrations for each suspension were calculated from the experimentally derived formula (Table 4, LGd<sub>1.41</sub>Tb<sub>0.59</sub>H). The formula was entered into a molecular weight calculation software (Molecular Weight Calculator 6.5, Matthew Monroe) to obtain the average formula mass (463.60 g mol<sup>-1</sup>). The formula mass was then used to convert suspension concentrations from units of mg ml<sup>-1</sup> to mM, and the latter were then doubled to account for the presence of two Ln<sup>3+</sup> ions per formula unit.

The relaxivities ( $r_1$  and  $r_2$  (s<sup>-1</sup>)) for each LRH formulation were then derived from the fitted gradients of the plots of relaxation rate ( $1/T_x$ ) against  $[\text{Ln}^{3+}]$  (mM) for each sample.

### Statistical analysis

One-way analysis of variance (ANOVA) was used to determine the statistical significance (at the  $p = 0.05$  level) in the difference of means for particle size measurements. A Fisher's LSD *post-hoc* test was used to determine which sample means differed significantly. The mean particle size values for each set of experimental parameters were input into JMP Pro 14 software for model fitting and effect screening.

## Results and discussion

### Particle size optimisation

For initial synthesis optimisation experiments, the temperature was set to 100  $^{\circ}$ C and 200  $^{\circ}$ C (50  $^{\circ}$ C above and below the previously reported method),<sup>1</sup> with incubation times of 10 and 24 h (compared to 15 h originally). The fill volumes chosen were approximately half the capacity of the reactor (10 ml) and full capacity (18 ml), whilst leaving some room for air in order to prevent vessel leakage. These parameters and their combinations are summarised in Table S1† (samples 100-X-Y and 200-X-Y, where X = incubation time, and Y = fill volume).

Analysis of XRD patterns (representative patterns shown in Fig. S1†) confirmed that all samples produced at 100  $^{\circ}$ C were LTbH, whereas those produced at 200  $^{\circ}$ C were a different phase. There are no reflections present in the 200  $^{\circ}$ C samples which correspond to LTbH, showing that a full phase conversion has occurred. The powder pattern is consistent with an orthorhombic form of Tb(OH)<sub>2</sub>Cl (Fig. S2†), based on data previously reported for Ln(OH)<sub>2</sub>Cl.<sup>28</sup>

As a phase transition occurs somewhere between 150–200  $^{\circ}$ C, and particles generated at 150  $^{\circ}$ C are inhomogeneous, further experiments were carried out at reduced temperatures of 90  $^{\circ}$ C and 140  $^{\circ}$ C. In addition, the incubation

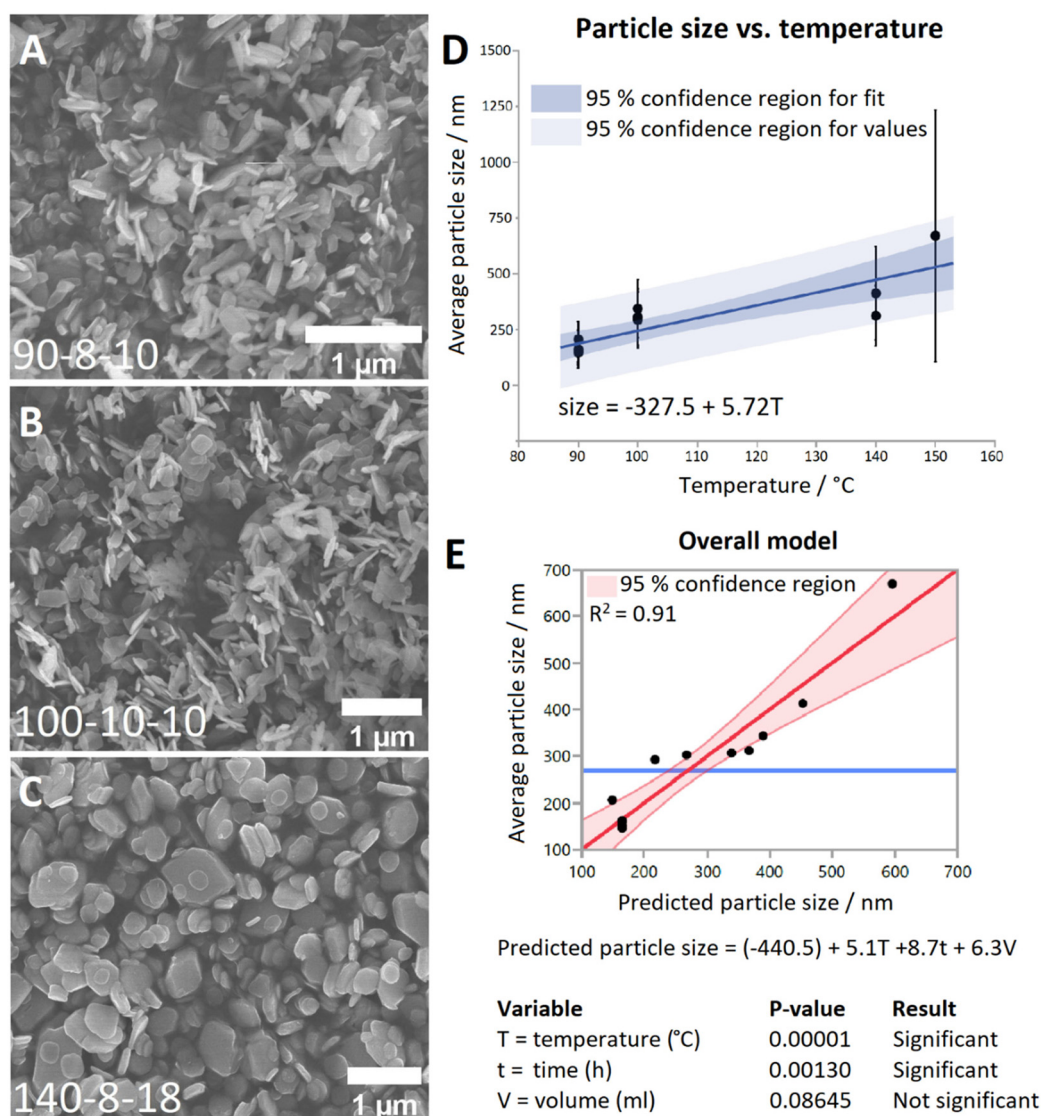


time was shortened to 4 h and 8 h, both to increase time efficiency, and to potentially further reduce particle size. XRD data (Fig. S1†) confirmed that the samples produced at 90 °C and 140 °C were also LTbH.

Representative SEM images from each temperature group are shown in Fig. 1A–C. It can be seen that at 90 °C the particles display a predominantly rod-shaped geometry, whereas at 140 °C the particles are almost exclusively platelet shaped. Samples synthesised at 100 °C showed a preference for the rod morphology, though to a lesser degree than the 90 °C samples. By contrast, samples of the material generated at 200 °C are composed of needle-shaped crystals which are several orders of magnitude larger than LTbH (Fig. S3†).

The mean particle sizes measured for each LTbH sample are summarised in Table S2,† and statistical analysis results

are presented in Table S3.† There appears to be a strong correlation between synthesis temperature and resultant particle size measured by SEM (Fig. 1D), with a contributing effect from reaction time, and no significant influence from fill volume (Fig. 1E). All LTbH samples in the present study had a mean particle size significantly smaller than that of samples synthesised according to the previously reported method (at 150 °C).<sup>1</sup> Furthermore, particles in samples 90-8-10 and 90-4-18-1 (90 °C) were significantly smaller than those from samples synthesised at 100 °C and 140 °C, and particles from sample 140-8-18 (140 °C, with longer incubation time and higher fill volume) were statistically the largest. There are also statistical differences within each temperature group, which are explained by secondary effects from the differences in reaction time.



**Fig. 1** SEM images of LTbH synthesised at (A) 90 °C; (B) 100 °C; (C) 140 °C; (D) plot showing the relationship between synthetic temperature and mean particle size; (E) plot showing the complete model (which includes  $T$ ,  $t$ , and  $V$  as variables) fitted to the data, and the statistical impact of each variable on the model. Plots D and E were generated using JMP Pro 14 software.



**Table 1** Summary of particle size data from SEM and DLS for replicates of LTbH synthesised at 90 °C

Sample name	Size by SEM (nm)	Particles measured	Hydrodynamic diameter (nm)	Polydispersity index
90-4-18-1	162 ± 85	460	199 ± 3	0.15 ± 0.04
90-4-18-2	151 ± 56	472	196 ± 2	0.18 ± 0.02
90-4-18-3	159 ± 52	515	199 ± 2	0.17 ± 0.03
90-4-18-4	146 ± 49	398	194 ± 6	0.15 ± 0.05
90-4-18-5	147 ± 47	849	194 ± 1	0.18 ± 0.04
90-4-18-6	152 ± 61	840	201 ± 2	0.20 ± 0.02
Overall	152 ± 59	3534	197 ± 4	0.17 ± 0.04

The experimental parameters producing particles with an average size smaller than 200 nm (90 °C, 4-hour incubation, and 18 ml fill volume) were selected as optimal for cancer theranostics. To verify that this method can consistently produce particles with a predictable size distribution and an average size of less than 200 nm, the experiment was repeated five additional times (Table S2,† samples 90-4-18-Z, where Z = replicate number). Particle size data measured by SEM are summarised in Table 1, and statistical analysis results are presented in Table S3.† XRD data (Fig. S4†) verified the material was LTbH in all cases. Statistical analysis showed that the mean particle sizes (by SEM) of the replicates (Table S3,† samples 90-4-18-Z, Z = 1–6) are not statistically different. Therefore, the optimal method shows good reproducibility in terms of mean particle size and size distribution, compared to other hydrothermally synthesised LRH chlorides, such as LGdH-Cl (rods and platelets, 100 nm–2 µm)<sup>13</sup> and LYH-Cl (platelets, 200–500 nm).<sup>29</sup> The reverse microemulsion method has previously been applied to generate more monodisperse LGdH-Cl particles (200–300 nm),<sup>30</sup> though the particle morphology in that case was less regular than reported here, and the use of surfactants introduced additional components into the system (which are potentially undesirable in pharmaceutical formulations).

The hydrodynamic diameter of the size-optimised particles, measured by DLS (Table 1), is approximately 50 nm larger than the size measured from SEM images, which is to be expected as this diameter includes water molecules associated with the particles being measured. All samples have low polydispersity, though in some cases a small secondary population was observed around 4–6 µm (Fig. S5†). This is believed to be a consequence of preparing suspensions from dried LRH materials, as a result of aggregated particles which were not sufficiently broken up by grinding and sonication. This is not expected to present a problem for *in vivo* applications as the product does not need to be dried after synthesis.

#### Application of optimised synthetic method to other LRHs (R = Pr, Nd, Gd, Dy, Er, Yb)

The optimal synthesis developed for LTbH was applied to other Ln systems. SEM images of the synthesised LRH materials are shown in Fig. 2, and average particle sizes in Table 2. In general, there appears to be a loose inverse relation-

ship between decreasing Ln<sup>3+</sup> ion size and particle size. The literature, however, presents a somewhat conflicting picture of how lanthanide ion size relates to LRH particle dimensions. The seminal work which first reported the hydrothermal synthesis of LRH materials based on yttrium and the lanthanides Gd–Lu<sup>31</sup> did not note differences in resultant particle size. In another study, using the homogeneous precipitation method, the lateral particle size of LRHs was seen to decrease across the period (from Sm–Tm).<sup>32</sup> Conversely, in a study on the effects of Ln<sup>3+</sup> doping on the resultant size of layered yttrium hydroxide (synthesised hydrothermally), it was found that inclusion of lighter lanthanide dopants led to smaller overall particle size.<sup>33</sup>

LRHs based on Nd, Gd, and Dy exhibit very similar rod and plate shaped particles to the analogous LTbH material (sample 90-4-18, Fig. 1A). Particles in the LPrH sample were highly aggregated. It was therefore challenging to resolve individual particles in the images, though they appear to be of similar dimensions to LRHs with R = Nd–Dy at 100–200 nm. LErH is seen to form thin, plate shaped particles with serrated edges, which bear little resemblance to those of any other LRH materials generated, including the plate shaped LTbH particles synthesised at 140 °C (Fig. 1C). The average size of LErH particles was found to be 442 ± 246 nm, significantly larger than the other LRH materials generated using the optimised protocol at 90 °C.

Crystalline LYbH could not be prepared at 90 °C, instead forming a colloidal dispersion. The synthetic temperature was therefore increased to 150 °C. The particles of LYbH produced are several orders of magnitude larger than the other LRH samples. The majority of LYbH particles are plate shaped, but some crystals are seen which exhibit unidirectional growth, which may be due to the presence of a secondary phase.

XRD patterns of the LRH materials (R = Pr, Nd, Gd, Dy, Er, Yb) are shown in Fig. 3. All patterns exhibit the expected (010) reflection just above 2θ = 10° and can be indexed in the orthorhombic space group *Pca*2<sub>1</sub> (refined unit cell parameters are summarised in Table S4†). Interlayer spacing is seen to decrease slightly with decreasing ionic size as previously reported.<sup>34</sup> All samples also exhibit prominent reflections arising from the (400), (112), (320), and (410) planes, with the exception of LYbH, presumably due to preferred orientation effects associated with the large, sheet like crystals. In general, most reflections shift to higher diffraction angles as the lanthanide ion size decreases, which is due to the decrease in Ln–O distances within the layers.<sup>34</sup>

All samples appear to be phase pure, except LYbH in which a small reflection can be seen next to the (010) reflection (Fig. 3). This peak corresponds to a secondary phase, with a smaller interlayer spacing of 7.96 Å, and has been reported previously.<sup>27</sup> This is also consistent with the observation of two distinct morphologies for LYbH in the SEM images (Fig. 2).

Thermograms of the various LRH materials are given in Fig. S6.† All compounds exhibit the expected triphasic mass loss. The first mass loss event below *ca.* 200 °C is attributed to



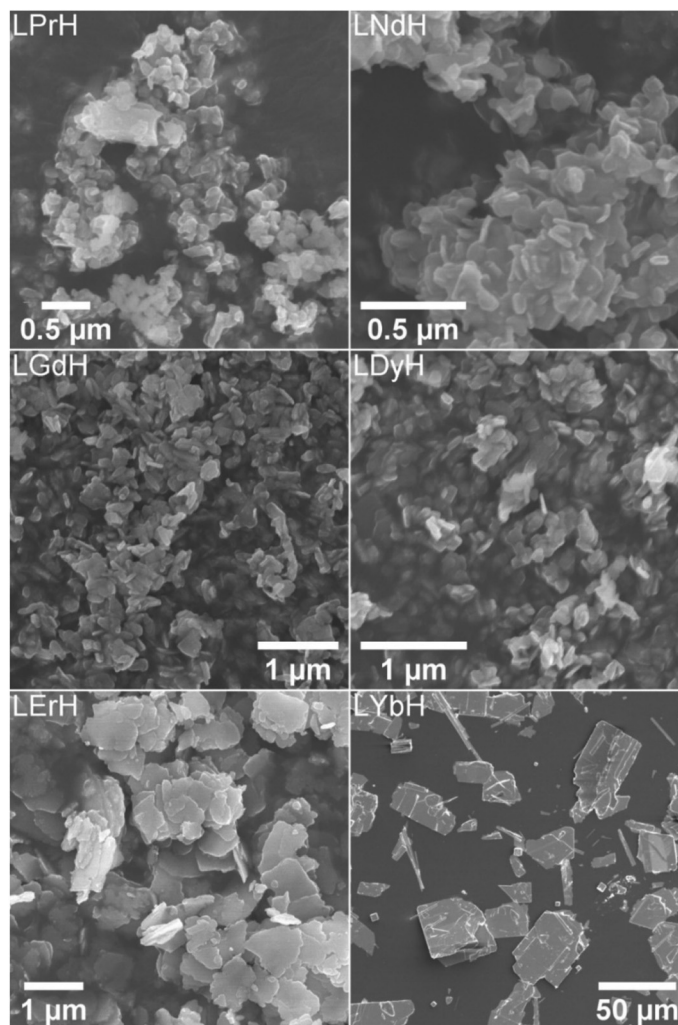


Fig. 2 SEM images of the LRH materials (R = Pr, Nd, Gd, Dy, Er, Yb) synthesised at 90 °C (150 °C in the case of LYbH).

**Table 2** Summary of mean particle size and number of particles measured for various LRH materials (R = Pr, Nd, Gd, Tb, Dy, Er, Yb) synthesised at 90 °C (\*: in the case of LYbH synthesis was carried out at 150 °C). Approximately 80–100 individual particles measured per sample

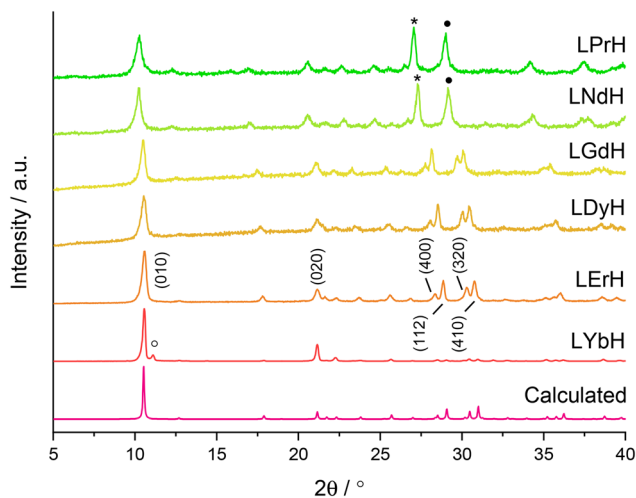
Sample	Size from SEM	Sample	Size from SEM
LPrH	138 ± 109 nm	LDyH	169 ± 56 nm
LNdH	102 ± 33 nm	LErH	442 ± 246 nm
LGdH	171 ± 67 nm	LYbH*	20 ± 14 μm

the loss of interlayer water, and the corresponding mass loss (along with elemental analysis data) is summarised in Table S5.† This corresponds to between 1 and 1.75 molecules of water per formula unit, summarised in Table 3. Overall, there does not appear to be any trend in the hydration level of the LRH materials. It is likely that the interlayer water content is sensitive to drying and storage conditions, causing natural variability between samples.

The results of the elemental analysis and water content as determined by TGA (Table S5†) were used to calculate the approximate formulae of the LRH materials (Table 3). The carbon content of LPrH and LNdH indicated the presence a higher-than-expected amount of carbonate anions, making up 90% of the anions within the interlayer gallery. It is not known why this might be the case, but it may be related to differences in charge density of the anions and lanthanide cations. This is supported by the fact that carbon content seemingly decreases with  $\text{Ln}^{3+}$  ion size – with carbonate ions accounting for only 5% of the interlayer anions in LYbH. No clear trend in carbonate content was reportedly observed for homogeneously precipitated LRHs with R = Nd–Tm,<sup>34</sup> but previous studies on LDH materials have shown a strong relation between anion selectivity and the charge density of the constituent LDH layers.<sup>35</sup>

Cytotoxicity of the LRH formulations was evaluated using *in vitro* cell viability experiments on Caco-2 and HEK 293 cell lines (Fig. 4). LYbH was not tested due to its unsuitable particle size. In the Caco-2 cell line experiments, most treatment groups appear to show no statistically significant cytotoxicity





**Fig. 3** XRD patterns for the LRH materials. (R = Pr, Nd, Gd, Dy, Er, Yb). \*: (202) and (400) plane reflections are overlapping, •: (212) and (410) plane reflections are overlapping, °: peak arising from secondary phase of LYbH. Calculated pattern based on LYbH (ICSD collection code 419745).

at the  $p = 0.05$  level. Conversely, for the HEK 293 cell line, a degree of cytotoxicity is seen in all treatment groups at both concentrations (with mean viability of less than 90%). LErH appears to exhibit the most adverse effect on the HEK 293 cells, with *ca.* 50% or less cells surviving after 24 hours, even at the lower testing concentration ( $270 \mu\text{g ml}^{-1}$ ). This effect

may be due to particle morphology, as LErH exhibits a mean particle size of  $442 \pm 246$  nm with serrated edges, larger than the Pr/Nd/Gd/Tb/Dy LRHs (mean particle size under 200 nm, generally more smooth rods or plates). Additional factors, such as  $\text{Ln}^{3+}$  ion identity or differences in LRH solubility may also contribute, though erbium compounds are not known to be particularly toxic relative to the rest of the lanthanides.<sup>36</sup>

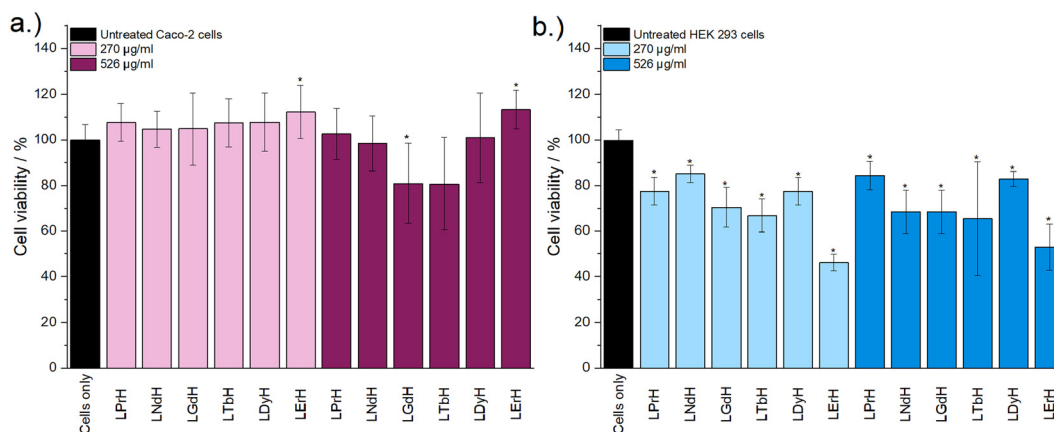
To develop a theranostic platform with the most promising combination of features, the lanthanide elements gadolinium and terbium were selected for further study. Terbium exhibits strong luminescence, while gadolinium has a large magnetic moment. SEM images in the current study revealed that both LGdH and LTbH form homogeneous particles of similar size under the optimised synthetic conditions, and their similar ionic size would likely result in high compatibility in a combined crystal system.

### Application of optimised synthetic method to generate mixed Gd/Tb LRH systems

LRH systems containing three different ratios of Gd and Tb were synthesised using feedstock molar ratios of 1:3, 1:1, and 3:1. Inductively coupled plasma optical emission spectroscopy (ICP-OES) was used to verify the Gd/Tb composition of each material (Table 4). ICP-OES, TGA (Fig. S7<sup>†</sup>), and elemental analysis data (Table 4 and Table S6<sup>†</sup>) were used to derive the formulae of the three LRH materials (Table 4). The TGA data (Fig. S7<sup>†</sup>) indicates that all three compounds exhibit the expected triphasic mass loss, as described above for the

**Table 3** Summary of formulae derived from TGA/elemental analysis data. \*Data from prior study.<sup>1</sup>

Material	Formula	Material	Formula
LPrH-Cl	$\text{Pr}_2(\text{OH})_5\text{Cl}_{0.1}(\text{CO}_3)_{0.45}\cdot\text{H}_2\text{O}$	LDyH-Cl	$\text{Dy}_2(\text{OH})_5\text{Cl}_{0.7}(\text{CO}_3)_{0.15}\cdot\text{H}_2\text{O}$
LNdH-Cl	$\text{Nd}_2(\text{OH})_5\text{Cl}_{0.1}(\text{CO}_3)_{0.45}\cdot 1.75\text{H}_2\text{O}$	LErH-Cl	$\text{Er}_2(\text{OH})_5\text{Cl}_{0.8}(\text{CO}_3)_{0.1}\cdot 1.5\text{H}_2\text{O}$
LGdH-Cl	$\text{Gd}_2(\text{OH})_5\text{Cl}_{0.7}(\text{CO}_3)_{0.15}\cdot 1.75\text{H}_2\text{O}$	LYbH-Cl	$\text{Yb}_2(\text{OH})_5\text{Cl}_{0.95}(\text{CO}_3)_{0.025}\cdot 1.5\text{H}_2\text{O}$
LTbH-Cl*	$\text{Tb}_2(\text{OH})_5\text{Cl}_{0.9}(\text{CO}_3)_{0.05}\cdot 1.5\text{H}_2\text{O}$		



**Fig. 4** The results of *in vitro* cell viability assays performed with (a) Caco-2 and (b) HEK 293 cell lines and aqueous LRH suspensions at two concentrations ( $270 \mu\text{g ml}^{-1}$  and  $526 \mu\text{g ml}^{-1}$ ). The assay experiment was performed three separate times, each in triplicate. Results are presented as mean  $\pm$  standard deviation. \* Denotes groups with a significantly different mean viability from the control, at the  $p = 0.05$  level.





**Table 4** The Gd/Tb fractions of mixed-metal LRH materials (LGd<sub>2-x</sub>Tb<sub>x</sub>H-Cl), as determined by ICP-OS (and expected based on concentrations in the synthetic feedstock). Each value is the mean of three separate samples. Formulae derived from ICP-OES/TGA/elemental analysis data

Feedstock ratio (Gd : Tb)	Tb fraction (x)	Gd fraction (2 - x)	Formula and sample name
3 : 1	1.590 ± 0.003 (1.50)	0.410 ± 0.003 (0.50)	Gd <sub>1.41</sub> Tb <sub>0.59</sub> (OH) <sub>5</sub> Cl <sub>0.78</sub> (CO <sub>3</sub> ) <sub>0.11</sub> ·1.6H <sub>2</sub> O (LGd <sub>1.41</sub> Tb <sub>0.59</sub> H-Cl)
1 : 1	1.121 ± 0.007 (1.00)	0.879 ± 0.007 (1.00)	Gd <sub>0.88</sub> Tb <sub>1.12</sub> (OH) <sub>5</sub> Cl <sub>0.78</sub> (CO <sub>3</sub> ) <sub>0.11</sub> ·1.6H <sub>2</sub> O (LGd <sub>0.88</sub> Tb <sub>1.12</sub> H-Cl)
1 : 3	0.591 ± 0.006 (0.50)	1.409 ± 0.006 (1.50)	Gd <sub>0.41</sub> Tb <sub>1.59</sub> (OH) <sub>5</sub> Cl <sub>0.75</sub> (CO <sub>3</sub> ) <sub>0.125</sub> ·1.6H <sub>2</sub> O (LGd <sub>0.41</sub> Tb <sub>1.59</sub> H-Cl)

other LRH formulations. The first mass loss event, corresponding to the loss of interlayer water below *ca.* 200 °C, indicates that all three formulations have very similar water content (approximately 1.6 molecules per formula unit). Elemental mapping (Fig. S8†) indicates a homogenous distribution of Tb and Gd in the LGd<sub>1.41</sub>Tb<sub>0.59</sub>H-Cl system, consistent with formation of a single mixed-metal phase.

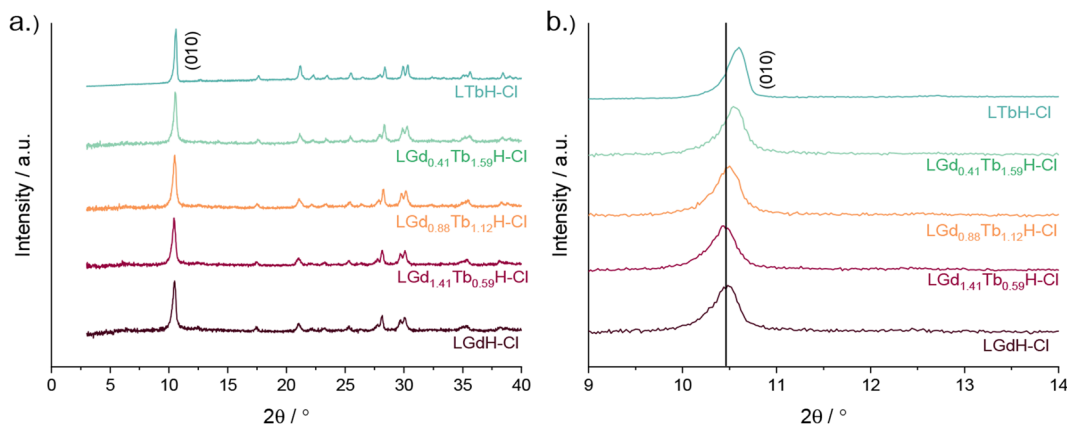
In each formulation, the Tb<sup>3+</sup> content is slightly higher than expected based on the ratio of salts present during synthesis. It is possible that this effect is related to ion size/effective nuclear charge effects, with the slightly smaller, more charge dense Tb<sup>3+</sup> ions crystallising into the LRH matrix more readily.

XRD patterns of the LRH materials (R = Gd/Tb) with varying composition are shown in Fig. 5. In all cases, the patterns are very similar to each other and to the single-metal LRH materials (LTbH and LGdH). All mixed-metal LRH sample XRD patterns exhibit the expected (010) reflection just above 2θ = 10°. The (010) reflection, which corresponds to the interlayer spacing, is seen to shift very slightly to higher diffraction angles with higher Tb<sup>3+</sup> content. This is consistent with the expectation that the interlayer distance should decrease for heavier lanthanides with a smaller ionic size.<sup>34</sup>

Higher resolution diffraction patterns of LTbH-Cl, LGdH-Cl, and LGd<sub>1.41</sub>Tb<sub>0.59</sub>H-Cl were collected using a diffractometer with a molybdenum anode for Rietveld refinement based on the previously reported layered ytterbium hydroxychloride (LYbH-Cl)<sup>27</sup> structure. Inspection of the powder diffraction patterns (Fig. 6, S9 and S10†) revealed that they were broadly similar to each other as well as to LYbH-Cl. Rietveld refine-

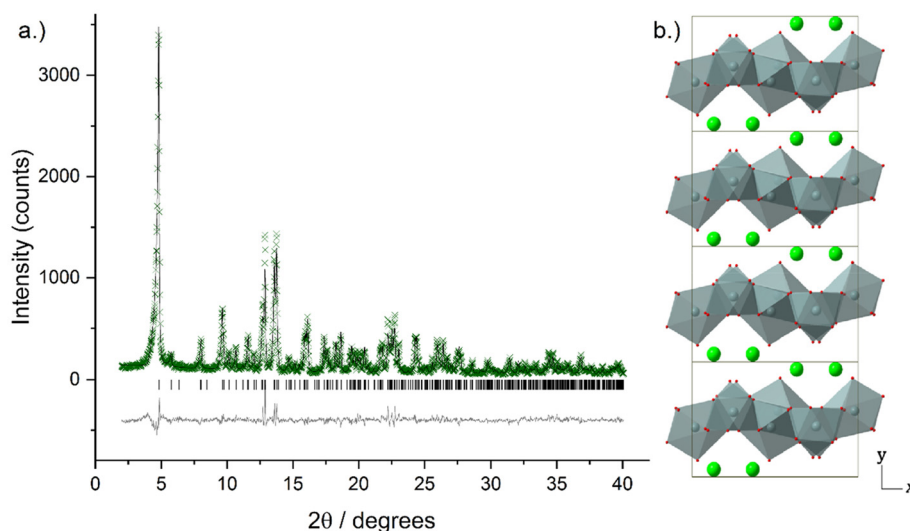
ment using the reported LYbH phase as the starting model proceeded smoothly for LGd<sub>1.41</sub>Tb<sub>0.59</sub>H-Cl and LGdH-Cl. A representative Rietveld fit for LGd<sub>1.41</sub>Tb<sub>0.59</sub>H-Cl is shown in Fig. 6a, and confirms the soundness of the structural model. The remaining fits are presented in Fig. S9 and S10,† and the refined unit cell parameters are summarised in Table S7.† Though it was possible to fit LTbH-Cl (Fig. S10†), this phase was much less crystalline than either of the Gd-containing phases. CSD 2328393–2328395 contain the structural data for these crystal structures and are available from the CCDC/FIZ Karlsruhe data access service.

The basic structure prototype for these solids has been reported before,<sup>27</sup> so the structural description here is brief and focuses on the example of LGd<sub>1.41</sub>Tb<sub>0.59</sub>H-Cl. The structure crystallises in the non-centric space group *Pca*2<sub>1</sub>, with two independent Ln<sup>3+</sup> ions in the asymmetric unit. These are coordinated by 7 and 8 hydroxide ions respectively, and each is bound to one water molecule. The coordination geometry of Ln(1) is irregular, and that of Ln(2) may be described as a capped square antiprism. The hydroxide ions each coordinate to three Ln<sup>3+</sup> ions to generate a dense layer of linked polyhedra that extend in the *xz* plane. No hydrogen atoms were located in the original study, and have not been added to the present model, but the orientation of the oxygen atoms strongly suggests that the O–H of the hydroxide groups point into the interlayer region. Water molecules project above and below each layer. Between the layers are located the chloride ions, forming hydrogen bonds to bound water and hydroxide. The structure is shown in Fig. 6b.



**Fig. 5** XRD patterns for various compositions of LRH materials (R = Gd, Tb) showing (a) the full patterns and (b) and enlargement of the low-angle region.



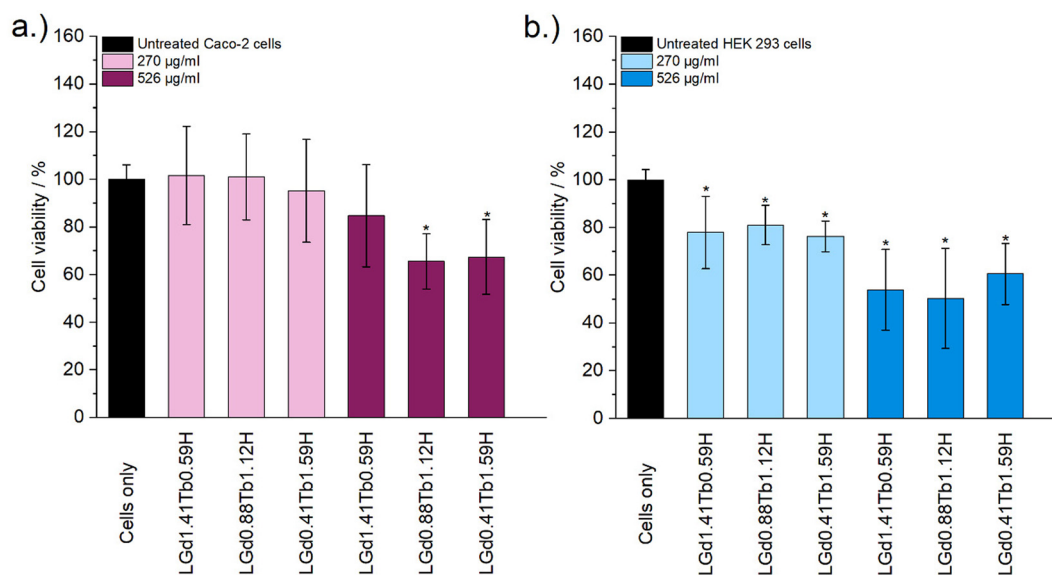


**Fig. 6** (a) Observed (crosses), calculated (upper line), and difference (lower line) profiles for Rietveld refinement of  $\text{LGd}_{1.41}\text{Tb}_{0.59}\text{H-Cl}$ . Tick marks show the positions of allowed reflections. (b) Crystal structure of  $\text{LGd}_{1.41}\text{Tb}_{0.59}\text{H-Cl}$  viewed down the crystallographic  $c$ -axis.  $\text{LnO}_n$  polyhedra are shown in grey, oxygen atoms positions are marked in red, and inter-layer chloride anions are shown in green.

There is no evidence in the current diffraction data for ordering of the  $\text{Tb}^{3+}$  and  $\text{Gd}^{3+}$  ions within  $\text{LGd}_{1.41}\text{Tb}_{0.59}\text{H-Cl}$ . As expected, the unit cell of  $\text{LGd}_{1.41}\text{Tb}_{0.59}\text{H-Cl}$  contracts relative to  $\text{LGdH-Cl}$  with the partial replacement of  $\text{Gd}^{3+}$  by  $\text{Tb}^{3+}$  due to the well-known lanthanide contraction phenomenon ( $V = 782.32(5)$  and  $791.06(6) \text{ \AA}^3$  respectively, Table S7†).

Cytotoxicity of the mixed Gd/Tb LRH formulations was evaluated using *in vitro* cell viability experiments on Caco-2 and HEK 293 cell lines (Fig. 7). For the Caco-2 cell line, no LRH (R = Gd, Tb) composition shows a statistically significant change

in cell viability relative to the untreated control at the lower treatment concentration ( $270 \mu\text{g ml}^{-1}$ ). At the higher concentration of  $526 \mu\text{g ml}^{-1}$ , the viability of cells treated with  $\text{LGd}_{0.88}\text{Tb}_{1.12}\text{H-Cl}$  and  $\text{LGd}_{0.41}\text{Tb}_{1.59}\text{H-Cl}$  declines slightly to approximately 70% relative to the untreated control. The marginally higher cell viability after treatment with  $\text{LGd}_{1.41}\text{Tb}_{0.59}\text{H-Cl}$  may be related to the slightly higher Gd content, as has been reported for  $\text{LGdH-Cl}$  previously.<sup>13</sup> Overall, LRH composition does not appear significantly affect the viability of Caco-2 cells, but may have some influence at



**Fig. 7** The results of *in vitro* cell viability assays on (a) Caco-2 and (b) HEK 293 cell lines, performed with LRH materials of varying composition at two concentrations ( $270 \mu\text{g ml}^{-1}$  and  $526 \mu\text{g ml}^{-1}$ ). The experiment was performed three separate times, each in triplicate. Results are presented as mean  $\pm$  standard deviation. \* Denotes groups with a significantly different mean viability from the control, at the  $p = 0.05$  level.



higher treatment concentrations. Some cytotoxicity is seen in all HEK 293 cell treatment groups. It seems that HEK-293 cells are more sensitive to the presence of LRH materials than Caco-2 cells; this is broadly in agreement with cytotoxicity data presented for LTbH-Cl<sup>1</sup> and LGdH-Cl/LTbH (current study). Additionally, the HEK 293 cell line has been previously demonstrated to be more sensitive than cancerous HeLa cells to the presence of silver nanoparticles,<sup>37</sup> as well as experiencing mild inhibition (*ca.* 95% viability) in the presence of only 10  $\mu\text{g ml}^{-1}$  of Gd/Tb-containing nanoparticles.<sup>38</sup>

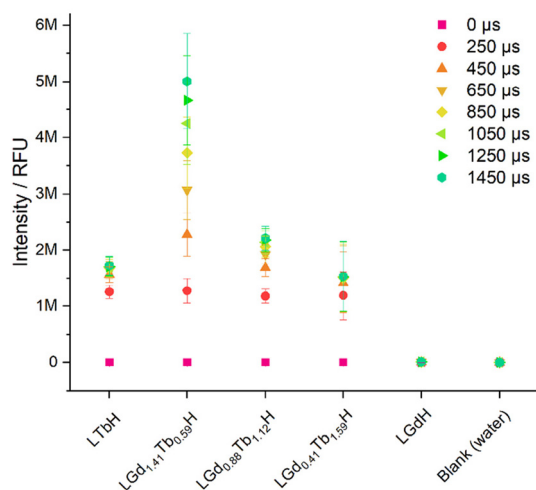
The limited existing studies regarding the cytotoxicity of LRH materials are typically conducted using lower treatment concentrations (50–100  $\mu\text{g ml}^{-1}$ ).<sup>9,10,39</sup> Therefore, the present findings of relatively high cell viability (*ca.* > 70%) in most treatment groups across both cell lines for the lower concentration tested (270  $\mu\text{g ml}^{-1}$ ) provide strong evidence that these materials are well-tolerated. Compared to other Ln-containing systems explored for biomedical applications, for instance Gd-containing quantum dots (*ca.* 70% viability in Caco-2 at 400  $\mu\text{g ml}^{-1}$ )<sup>40</sup> and Gd/Tb containing silica nanoparticles (*ca.* > 75% viability in Caco-2 at 100  $\mu\text{g ml}^{-1}$ ),<sup>41</sup> the LRH materials studied in the present work do not appear to exhibit any additional cytotoxicity.

The photoluminescence response of the various compositions of LRH (R = Gd, Tb) was compared in aqueous suspension (3 mg  $\text{ml}^{-1}$ ) by using time-resolved fluorescence (TRF; Fig. 8). By far the highest maximum luminescence intensity reached after 1450  $\mu\text{s}$  is seen in LGd<sub>1.41</sub>Tb<sub>0.59</sub>H-Cl (*ca.* 4–6 M relative fluorescence units). The remaining Gd/Tb LRH samples and LTbH-Cl exhibit comparable luminescence intensity, though the luminescence of LGd<sub>0.88</sub>Tb<sub>1.12</sub>H-Cl is slightly more intense than LTbH-Cl.

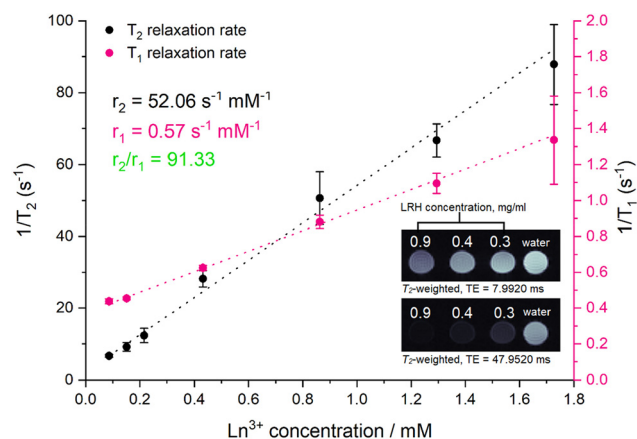
Overall, this is likely a combination of two effects – firstly, Tb<sup>3+</sup>-Tb<sup>3+</sup> quenching effects are minimised with higher Gd<sup>3+</sup>

content (as there is more separation between Tb<sup>3+</sup> centres on average).<sup>24</sup> Secondly, additional energy transfer from Gd<sup>3+</sup> to Tb<sup>3+</sup> occurs, resulting in a higher population of excited states in the Tb<sup>3+</sup> centres and thence higher luminescence production, as has been reported in several types of systems containing both Tb<sup>3+</sup> and Gd<sup>3+</sup>.<sup>24,42</sup> This also helps to explain the longer time to reach saturation intensity in LGd<sub>1.41</sub>Tb<sub>0.59</sub>H-Cl compared to the other Tb<sup>3+</sup> containing samples (over 1450  $\mu\text{s}$  vs. less than *ca.* 1050  $\mu\text{s}$ ), as the additional energy transfer from Gd<sup>3+</sup>-Tb<sup>3+</sup> is not instantaneous.

To investigate the ability of the lead formulation LGd<sub>1.41</sub>Tb<sub>0.59</sub>H-Cl to generate magnetic resonance imaging contrast, serial dilutions in water were prepared and imaged on a 9.4T MRI system (example images at short and long echo times shown in Fig. 9, inset; representative digital,  $T_1$ , and  $T_2$ -weighted images (at all inversion/echo times measured) shown in Fig. S11–S13<sup>†</sup>). The fitted  $T_1$  and  $T_2$  values from the images were then used to plot relaxation rate ( $1/T_x$ ) against Ln<sup>3+</sup> concentration (Fig. 9), and to subsequently calculate the relaxivities for each dilution series from the slope of the graphs. The  $r_1$  relaxivity (0.57 s<sup>-1</sup> mM<sup>-1</sup>) is low compared to commercially available Gd-based Magnevist and Dotarem contrast agents (4.1 and 3.7 s<sup>-1</sup> mM<sup>-1</sup> respectively, in water and measured at 9.4T),<sup>43</sup> but is in line with previously reported  $r_1$  relaxivity for LGdH (0.51 mM<sup>-1</sup> s<sup>-1</sup>, in agarose gel at 7T).<sup>13</sup> This is believed to be a consequence of the layered nature of the LRHs – slow diffusion of water molecules through the interlayer space results in only the surface Gd–OH polyhedra being able to efficiently partake in proton exchange with the surrounding bulk water and contribute to  $T_1$  relaxation. This is analogous to reports on non-layered Gd-phosphate nanoparticles,<sup>44</sup> where  $r_1$  relaxivities were shown to depend on surface to volume ratio. Additionally, in the present study,  $r_1$  relaxivity is



**Fig. 8** Plot showing the luminescence intensity (ex/em = 250/545 nm) in aqueous suspensions of LRH materials (3 mg  $\text{ml}^{-1}$ ) with varying composition, at different integration times (0–1450  $\mu\text{s}$ ). Results are presented as mean of three separate samples  $\pm$  standard deviation.



**Fig. 9** Relaxation rate graphs ( $T_1$  and  $T_2$ ) of LGd<sub>1.41</sub>Tb<sub>0.59</sub>H constructed from fitted  $T_1$  and  $T_2$  values, which were in turn derived from MR images of a dilution series of LGd<sub>1.41</sub>Tb<sub>0.59</sub>H. Results are presented as mean of three separate samples  $\pm$  standard deviation. Inset:  $T_2$ -weighted images of water and selected aqueous suspensions of LGd<sub>1.41</sub>Tb<sub>0.59</sub>H (0.9, 0.4, 0.3 mg  $\text{ml}^{-1}$ ) at different at long and short echo times. Note: images have been cropped and rearranged for illustrative purposes, full images are presented in Fig. S13.<sup>†</sup>



slightly suppressed as a result of plotting the relaxation rate against the concentration of both  $\text{Gd}^{3+}$  and  $\text{Tb}^{3+}$  (rather than  $\text{Gd}^{3+}$  alone); both  $\text{Gd}^{3+}$  and  $\text{Tb}^{3+}$  affect  $T_2$  relaxation, though only  $\text{Gd}^{3+}$  contributes significantly to  $T_1$  relaxation.

On the other hand, the  $r_2$  relaxivity ( $52.06 \text{ s}^{-1} \text{ mM}^{-1}$ ) of this LRH, while lower than that of conventional negative MRI contrast agents based on superparamagnetic iron oxide (such as Feridex,  $105 \text{ s}^{-1} \text{ mM}^{-1}$ , in water and measured at 4.7T),<sup>45</sup> is considerable – and taken together with the lowered  $r_1$  relaxivity, this LRH exhibits strong potential as a negative MRI contrast agent ( $r_2/r_1 = 91.33$ ). In the  $T_2$ -weighted images (Fig. 9 inset) notable reduction in signal relative to pure water is seen at LRH concentrations  $0.3\text{--}0.9 \text{ mg ml}^{-1}$ , particularly at longer echo times (full series of images at various echo times shown in Fig. S13†).

This is promising for translation towards the clinic as it indicates that  $\text{LGd}_{1.41}\text{Tb}_{0.59}\text{H}$  could be used to effectively shorten the  $T_2$  relaxation time of protons in tissue and provide negative contrast enhancement. Coupled with the potential for preferential accumulation in tissues which exhibit enlarged intercellular fenestration (for instance, cancer or myocardial infarct tissues) due to the optimised size of the LRH particles described in this work, as well as the strong luminescent signal arising from  $\text{Tb}^{3+}$  which has been previously shown to be sensitive to drug loading, this platform could provide a valuable pathway for targeting and imaging disease pathologies, as well as quantifying drug release/accumulation at the desired site.

## Conclusions

The particle size and morphology of LTbH was successfully optimised through systematic adjustment of hydrothermal reaction parameters, leading to a significant reduction in both mean particle size and particle size distribution from that previously reported (from  $670 \pm 564 \text{ nm}$  (ref. 1) to  $152 \pm 59 \text{ nm}$ ). This new method was subsequently applied to generate a series of LRH materials with alternate composition (R = Pr, Nd, Gd, Dy, Er, Yb). The synthesis was successful for R = Pr, Nd, Gd, and Dy, in all cases yielding particles with mean size under 200 nm, well suited for theranostic applications. Lead elements Gd and Tb were selected based on their favourable imaging properties, and three additional formulations containing these elements in varying ratios were synthesised. The photoluminescence of the various LRH formulations was assessed in aqueous suspension, and it was found that  $\text{LGd}_{1.41}\text{Tb}_{0.59}\text{H-Cl}$  exhibited vastly enhanced fluorescence intensity relative to the other mixed Gd/Tb LRHs, which was attributed to the minimised  $\text{Tb}^{3+}\text{--}\text{Tb}^{3+}$  quenching and additional energy transfer from  $\text{Gd}^{3+}$  to  $\text{Tb}^{3+}$ . Magnetic resonance imaging studies revealed that the lead formulation,  $\text{LGd}_{1.41}\text{Tb}_{0.59}\text{H}$ , additionally exhibits promising contrast features, with strong  $T_2$ -shortening effect on water ( $r_2 = 52.06 \text{ s}^{-1} \text{ mM}^{-1}$ ).

## Conflicts of interest

There are no conflicts to declare.

## Acknowledgements

MS kindly thanks the Engineering and Physical Sciences Research Council (EPSRC) for PhD funding through the Centre for Doctoral Training in Advanced Therapeutics & Nanomedicines (EP/L01646X/1) and subsequent funding through the EPSRC Doctoral Prize Fellowship (EP/W524335/1). CJRW thanks the EPSRC Centre for Doctoral Training in the Advanced Characterisation of Materials (EP/L015277/1) for funding. DJS was supported by British Heart Foundation Intermediate and Senior Basic Science Research Fellowships (FS/15/33/31608, FS/SBSRF/21/31020), the BHF Centre for Regenerative Medicine (RM/17/1/33377), the MRC (MR/R026416/1), and Wellcome Trust (212937/Z/18/Z. JAW is supported by the Wellcome Trust (225345/Z/22/Z).

## References

- 1 M. Strimaite, *et al.* Layered terbium hydroxides for simultaneous drug delivery and imaging, *Dalton Trans.*, 2021, **50**, 10275–10290.
- 2 G. Sheng, J. Hu, H. Li, J. Li and Y. Huang, Enhanced sequestration of  $\text{Cr}(\text{VI})$  by nanoscale zero-valent iron supported on layered double hydroxide by batch and XAFS study, *Chemosphere*, 2016, **148**, 227–232.
- 3 X. Kong, *et al.* Super-stable mineralization of cadmium by calcium-aluminum layered double hydroxide and its large-scale application in agriculture soil remediation, *Chem. Eng. J.*, 2021, **407**, 127178.
- 4 L. Yang, Z. Liu, S. Zhu, L. Feng and W. Xing, Ni-based layered double hydroxide catalysts for oxygen evolution reaction, *Mater. Today Phys.*, 2021, **16**, 100292.
- 5 R. Li, *et al.* Large Scale Synthesis of NiCo Layered Double Hydroxides for Superior Asymmetric Electrochemical Capacitor, *Sci. Rep.*, 2016, **6**, 18737.
- 6 L. Vigna, *et al.* Layered Double Hydroxide-Based Gas Sensors for VOC Detection at Room Temperature, *ACS Omega*, 2021, **6**, 20205–20217.
- 7 J. Li, *et al.* Facile Synthesis of Organic-Inorganic Hybrid Layered Rare-Earth Hydroxide Nanocone for Multifunctional Drug Delivery System with Fluorescence Probe and Simultaneous Magnetic Resonance Imaging, *Adv. Opt. Mater.*, 2023, **11**, 2203146.
- 8 B.-I. Lee, K. S. Lee, J. H. Lee, I. S. Lee and S.-H. Byeon, Synthesis of colloidal aqueous suspensions of a layered gadolinium hydroxide: a potential MRI contrast agent, *Dalton Trans.*, 2009, **14**, 2490.
- 9 Q. Gu, W. Chen, F. Duan and R. Ju, Fabrication of a nano-drug delivery system based on layered rare-earth hydroxides



- integrating drug-loading and fluorescence properties, *Dalton Trans.*, 2016, **45**, 12137–12143.
- 10 R. Ju and Q. Gu, Biohybrid based on layered terbium hydroxide and applications as drug carrier and biological fluorescence probe, *Appl. Organomet. Chem.*, 2018, **32**, e3926.
  - 11 B. Shao, *et al.* Eu<sup>3+</sup>-doped layered gadolinium hydroxides as drug carriers and their bactericidal behavior, *Mater. Sci. Eng., C*, 2021, **127**, 112213.
  - 12 Q. Gu, *et al.* Intercalation of amino acids into Eu<sup>3+</sup>-doped layered gadolinium hydroxide and quenching of Eu<sup>3+</sup> luminescence, *Eur. J. Inorg. Chem.*, 2012, **2012**, 4407–4412.
  - 13 Y. Xu, *et al.* Layered gadolinium hydroxides for simultaneous drug delivery and imaging, *Dalton Trans.*, 2018, **47**, 3166.
  - 14 J. S. Choi, *et al.* Size-controlled biodegradable nanoparticles: Preparation and size-dependent cellular uptake and tumor cell growth inhibition, *Colloids Surf., B*, 2014, **122**, 545–551.
  - 15 S. K. Hobbs, *et al.* Regulation of transport pathways in tumor vessels: Role of tumor type and microenvironment, *Proc. Natl. Acad. Sci. U. S. A.*, 1998, **95**, 4607–4612.
  - 16 H. Sarin, Physiologic upper limits of pore size of different blood capillary types and another perspective on the dual pore theory of microvascular permeability, *J. Angiogr. Res.*, 2010, **2**, 14.
  - 17 P. Decuzzi, F. Causa, M. Ferrari and P. A. Netti, The Effective Dispersion of Nanovectors Within the Tumor Microvasculature, *Ann. Biomed. Eng.*, 2006, **34**, 633–641.
  - 18 H. S. Panda, R. Srivastava and D. Bahadur, Synthesis and in situ mechanism of nuclei growth of layered double hydroxides, *Bull. Mater. Sci.*, 2011, **34**, 1599–1604.
  - 19 S. K. Sharma, P. K. Kushwaha, V. K. Srivastava, S. D. Bhatt and R. V. Jasra, Effect of hydrothermal conditions on structural and textural properties of synthetic hydrotalcites of varying Mg/Al ratio, *Ind. Eng. Chem. Res.*, 2007, **46**, 4856–4865.
  - 20 N. A. Jose, H. C. Zeng and A. A. Lapkin, Hydrodynamic assembly of two-dimensional layered double hydroxide nanostructures, *Nat. Commun.*, 2018, **9**, 4913.
  - 21 J. Wang, *et al.* Pressure-induced oriented attachment growth of large-size crystals for constructing 3D ordered superstructures, *ACS Nano*, 2016, **10**, 405–412.
  - 22 L. Liu, *et al.* Facile fabrication of color-tunable and white light emitting nano-composite films based on layered rare-earth hydroxides, *J. Mater. Chem. C*, 2015, **3**, 2326–2333.
  - 23 F. Su, *et al.* Delaminated layered rare-earth hydroxide composites with ortho-coumaric acid: color-tunable luminescence and blue emission due to energy transfer, *J. Mater. Chem. C*, 2015, **3**, 7143–7152.
  - 24 L. Liu, *et al.* Dramatically Enhanced Luminescence of Layered Terbium Hydroxides as Induced by the Synergistic Effect of Gd<sup>3+</sup> and Organic Sensitizers, *J. Phys. Chem. C*, 2014, **118**, 14511–14520.
  - 25 H. M. Rietveld, A profile refinement method for nuclear and magnetic structures, *J. Appl. Crystallogr.*, 1969, **2**, 65–71.
  - 26 B. H. Toby and R. B. Von Dreele, GSAS-II: The genesis of a modern open-source all purpose crystallography software package., *J. Appl. Crystallogr.*, 2013, **46**, 544–549.
  - 27 L. Poudret, T. J. Prior, L. J. McIntyre and A. M. Fogg, Synthesis and crystal structures of new lanthanide hydroxyhalide anion exchange materials, Ln<sub>2</sub>(OH)<sub>5</sub>X·1.5H<sub>2</sub>O (X = Cl, Br; Ln = Y, Dy, Er, Yb), *Chem. Mater.*, 2008, **20**, 7447–7453.
  - 28 R. A. Zehnder, *et al.* Investigation of the Structural Properties of an Extended Series of Lanthanide Bis-hydroxychlorides Ln(OH)<sub>2</sub>Cl (Ln = Nd–Lu, except Pm and Sm), *Inorg. Chem.*, 2010, **49**, 4781–4790.
  - 29 E. Yudina, A. Frolova, I. Krivtsov and V. Avdin, Analysis of products formed in hydrothermal processing of yttrium nitrate and yttrium chloride, *Bull. South Ural Stat. Univ. Ser.: Chem.*, 2015, **7**, 51–54.
  - 30 Y. Xu, *et al.* Reverse microemulsion synthesis of layered gadolinium hydroxide nanoparticles, *J. Solid State Chem.*, 2018, **258**, 320–327.
  - 31 L. J. McIntyre, L. K. Jackson and A. M. Fogg, Synthesis and anion exchange chemistry of new intercalation hosts containing lanthanide cations, Ln<sub>2</sub>(OH)<sub>5</sub>(NO<sub>3</sub>)·xH<sub>2</sub>O (Ln=Y, Gd–Lu), *J. Phys. Chem. Solids*, 2008, **69**, 1070–1074.
  - 32 F. Geng, *et al.* Synthesis and Properties of Well-Crystallized Layered Rare-Earth Hydroxide Nitrates from Homogeneous Precipitation, *Inorg. Chem.*, 2009, **48**, 6724–6730.
  - 33 Y. Xiang, *et al.* Synthesis of highly luminescent and anion-exchangeable cerium-doped layered yttrium hydroxides for sensing and photofunctional applications, *Adv. Funct. Mater.*, 2011, **21**, 4388–4396.
  - 34 F. Geng, *et al.* General synthesis and structural evolution of a layered family of Ln<sub>8</sub>(OH)<sub>20</sub>Cl<sub>4</sub>·nH<sub>2</sub>O (Ln = Nd, Sm, Eu, Gd, Tb, Dy, Ho, Er, Tm, and Y), *J. Am. Chem. Soc.*, 2008, **130**, 16344–16350.
  - 35 T. Hibino, Anion Selectivity of Layered Double Hydroxides: Effects of Crystallinity and Charge Density, *Eur. J. Inorg. Chem.*, 2018, **2018**, 722–730.
  - 36 D. W. Bruce, B. E. Hietbrink and K. P. DuBois, The acute mammalian toxicity of rare earth nitrates and oxides, *Toxicol. Appl. Pharmacol.*, 1963, **5**, 750–759.
  - 37 X. Liu, *et al.* Nanotoxic Effects of Silver Nanoparticles on Normal HEK-293 Cells in Comparison to Cancerous HeLa Cell Line, *Int. J. Nanomed.*, 2021, **16**, 753.
  - 38 L. Zhou, *et al.* DNA-mediated biomineralization of rare-earth nanoparticles for simultaneous imaging and stimuli-responsive drug delivery, *Biomaterials*, 2014, **35**, 8694–8702.
  - 39 H. Jung, H. Kim and S. H. Byeon, Luminescent Carrier, Tb<sup>3+</sup>-Doped Layered Yttrium Hydroxide, for Delivery Systems, *ACS Appl. Mater. Interfaces*, 2018, **10**, 43112–43121.
  - 40 C. Jiang, *et al.* One-pot aqueous synthesis of gadolinium doped CdTe quantum dots with dual imaging modalities, *Talanta*, 2016, **155**, 14–20.
  - 41 A. Forte, *et al.* Mesoporous silica nanoparticles with manganese and lanthanide salts: synthesis, characterization and cytotoxicity studies, *Dalton Trans.*, 2021, **50**, 8588–8599.
  - 42 M. L. Debasu, D. Ananias, J. Rocha, O. L. Malta and L. D. Carlos, Energy-transfer from Gd(III) to Tb(III) in (Gd,



- Yb,Tb)PO<sub>4</sub> nanocrystals, *Phys. Chem. Chem. Phys.*, 2013, **15**, 15565–15571.
- 43 P. Werner, M. Taupitz, L. Schröder and P. Schuenke, An NMR relaxometry approach for quantitative investigation of the transchelation of gadolinium ions from GBCAs to a competing macromolecular chelator, *Sci. Rep.*, 2021, **11**, 21731.
- 44 Y. Li, T. Chen, W. Tan and D. R. Talham, Size-Dependent MRI Relaxivity and Dual Imaging with Eu 0.2 Gd 0.8 PO<sub>4</sub> ·H<sub>2</sub>O Nanoparticles, *Langmuir*, 2014, **30**, 5873–5879.
- 45 M. Rohrer, H. Bauer, J. Mintorovitch, M. Requardt and H.-J. Weinmann, Comparison of Magnetic Properties of MRI Contrast Media Solutions at Different Magnetic Field Strengths, *Invest. Radiol.*, 2005, **40**, 715–724.

