



Cite this: *Chem. Commun.*, 2017, 53, 3527

Received 30th January 2017,
Accepted 7th March 2017

DOI: 10.1039/c7cc00804j

rsc.li/chemcomm

EthR is a transcriptional repressor that increases *Mycobacterium tuberculosis* resistance to ethionamide. In this study, the EthR–DNA interaction has been investigated by native electrospray-ionization mass spectrometry for the first time. The results show that up to six subunits of EthR are able to bind to its operator.

Tuberculosis (TB) is a contagious disease caused by *Mycobacterium tuberculosis* (Mtb) that exerts an enormous burden on human health and wellbeing worldwide. The World Health Organization (WHO) has estimated that in 2014, TB killed 1.5 million people, while another 9.6 million people were infected.¹ Progress against TB has been challenged by the rise of multidrug resistant (MDR) and extensively drug resistant (XDR) Mtb strains. 3.3% of new cases and 20% of previously treated cases have MDR-TB, and of those, an estimated 9.7% are XDR-TB.¹

Ethionamide is a second-line drug used for the treatment of MDR-TB. Mechanistically, ethionamide is a prodrug that is activated *in vivo* by EthA, a flavin-containing monooxygenase enzyme in Mtb, to form an ethionamide-NAD adduct.² This adduct inhibits the 2-*trans*-enoyl reductase enzyme InhA, which in turn leads to the inhibition of the Mtb type II fatty acid synthase system (FAS II).³ However, the potency of ethionamide is reduced by EthR, which is a transcriptional repressor of *ethA* expression.⁴ This suggests that inhibitors of EthR activity could function as ethionamide boosters,⁵ allowing for lower dosages of the drug to be used.

EthR belongs to the TetR/CamR repressor protein family, whose members show high sequence homology between their N-terminal DNA-binding domains, and is expected to bind to the DNA major groove *via* its helix-turn-helix (HTH) motif.⁶ Using DNase footprinting assays, Baulard and co-workers showed that

Structural insights into the EthR–DNA interaction using native mass spectrometry†

Daniel Shiu-Hin Chan,^a Wei-Guang Seetoh,^a Brendan N. McConnell,^a Dijana Matak-Vinković,^a Sherine E. Thomas,^b Vitor Mendes,^b Michal Blaszczyk,^b Anthony G. Coyne,^a Tom L. Blundell^b and Chris Abell^{*a}

EthR recognizes a 55 bp operator sequence within the *ethA-R* intergenic region.⁴ Subsequent surface plasmon resonance (SPR) analysis suggested that up to eight units of EthR could bind cooperatively to a 62 bp sequence (DNA₆₂) encompassing the operator site (Fig. S1, ESI†).⁴ There are numerous X-ray crystal structures of the EthR dimer in complex with various small-molecule ligands,^{7,8} but the structure of the EthR–DNA complex has not yet been solved.

Native electrospray ionization-mass spectrometry (ESI-MS) is an ideal technique for the study of the interactions and stoichiometries of macromolecular complexes.^{9,10} A large body of work has established that the native structure and composition of biomolecular complexes can be adequately maintained as solution species are transferred into the gas phase during the electrospray process. However, compared to the application of ESI-MS for multi-protein complexes, fewer studies on protein–DNA complexes have been reported.^{11–14} Analysis of protein–DNA complexes containing large DNA sequences using positive-ion native MS is complicated by the heterogeneity of cation adduction and as well as difficulties with achieving a stable electrospray.^{12,14} In this work, native MS was used to provide structural insights into the EthR–DNA interaction. Our results indicate that up to six subunits of EthR are able to bind to its operator.

Mass spectra of histidine-tagged EthR or EthR–DNA complexes were obtained by nano-electrospray ionization (nESI) from a hybrid quadrupole time-of-flight (qTOF) SYNAPT HDMS (Waters) instrument. The native MS spectrum of EthR alone confirmed the dimeric nature of EthR in solution, with the charge state distribution being centered around the 13+ state (Fig. 1a). The observed mass of dimeric EthR (50 475 ± 97 Da) was consistent with the theoretical mass of the dimer of the construct (50 456 Da). A small amount of monomeric EthR was also observed, at about 5% of the total protein content.

The native mass spectrum of DNA₆₂ alone showed that while DNA₆₂ existed primarily in its expected duplex state centered around the 10+ charge state, a fraction of the DNA was single-stranded (DNA_{ss62}), which could be due to an excess of one of the two complementary oligonucleotides (Fig. 1b). DNA *m/z* signals

^a Department of Chemistry, University of Cambridge, Lensfield Road, Cambridge CB21EW, UK. E-mail: ca26@cam.ac.uk

^b Department of Biochemistry, University of Cambridge, 80 Tennis Court Road, CB2 1GA Cambridge, UK

† Electronic supplementary information (ESI) available: Methods and supplementary spectra. See DOI: 10.1039/c7cc00804j



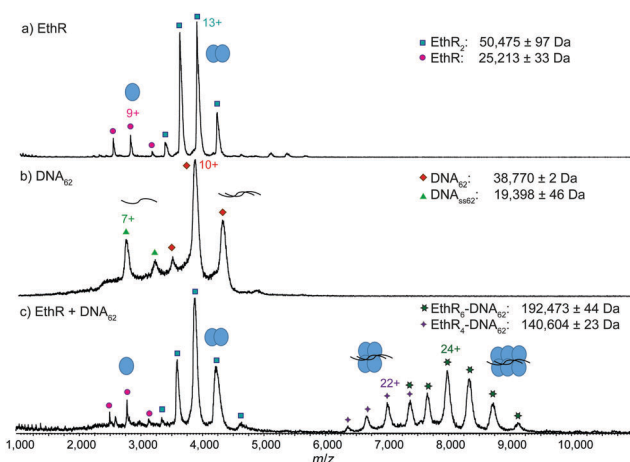


Fig. 1 Native MS reveals the formation of EthR₄-DNA and EthR₆-DNA complexes. MS spectra of (a) EthR alone showing that the protein exists predominantly as the dimer, (b) DNA₆₂ alone, and (c) a mixture of EthR and DNA₆₂ in a 8:1 ratio, showing the formation of both EthR₄-DNA₆₂ and EthR₆-DNA₆₂ complexes.

were generally broad, which could be a result of the large amount of cations that must be adducted to the polyanionic DNA in order for the nucleic acids to be detected in positive-ion mode.¹⁵

Optimization experiments were carried out to investigate the effect of parameters on EthR-DNA formation, including NH₄OAc concentration (Fig. S2, ESI[†]), Mg²⁺ ion concentration (Fig. S3, ESI[†]), incubation time (Fig. S4, ESI[†]), and buffer exchange conditions (Fig. S5 and S6, ESI[†]). Under the optimized conditions, EthR (20 μM) and DNA₆₂ (2.5 μM) were mixed together in an 8:1 ratio and subjected to nESI-MS. Surprisingly, instead of the expected EthR₈-DNA₆₂ complex, only the EthR₆-DNA₆₂ complex (192 473 ± 44 Da), centered around the 24+ state, and the EthR₄-DNA₆₂ complex (140 604 ± 23 Da), centered around the 22+ state, were detected (Fig. 1c). The observed masses are about 1% higher than the theoretical masses of 189 555 and 139 099 Da for the EthR₆-DNA₆₂ and EthR₄-DNA₆₂ species, respectively, which can be attributed to the adduction of weakly-bound molecules or ions. The EthR₆-DNA₆₂ and EthR₄-DNA₆₂ complexes are presumably formed by the assembly of three or two EthR dimers, respectively, onto the DNA. In contrast, no protein-DNA complexes were observed by native MS when EthR was mixed with a random 55 bp sequence (DNA_{R55}) in a 8:1 or 12:1 ratio (Fig. S7, ESI[†]), indicating that the complexes formed between EthR with its operator DNA₆₂ were specific.

The proportion of EthR and DNA₆₂ was varied in order to investigate whether alternative protein-DNA complexes could be formed at different protein to DNA ratios. At a 6:1 or 7:1 ratio of EthR to DNA₆₂, the EthR₄-DNA₆₂ and EthR₆-DNA₆₂ complexes were detected as the major and minor species, respectively, and some free DNA could also be observed (Fig. S8a and b, ESI[†]). The relative intensity of free DNA₆₂ in the native mass spectra was much higher than expected for a slight excess of DNA over protein, which could be due to the greater ionization efficiency of DNA compared to the protein-DNA complex, as

has been previously reported.¹¹ As the proportion of EthR was increased to 8:1, the EthR₆-DNA₆₂ complex became the predominant protein-DNA species, and only free protein could be detected (Fig. S8c, ESI[†]). Even at a 12:1 ratio of EthR to DNA₆₂, the EthR₆-DNA complex was the largest species detected and no evidence of non-specific binding giving rise to higher oligomeric entities could be observed (Fig. S8d, ESI[†]). A small amount of the EthR₅-DNA₆₂ complex was also sometimes observed (Fig. S9, ESI[†]), which could presumably be formed from the association of a monomeric EthR subunit with a EthR₄-DNA₆₂ complex. However, the relatively low abundance of the EthR₅-DNA₆₂ complex and the EthR₃-DNA₃₇ complex (see below) compared to complexes containing an even number of EthR subunits suggests that their biological relevance may be relatively minor. An alternative interpretation is that these odd-numbered species may represent transient intermediates during protein-DNA complex formation.

The stoichiometric heterogeneity of the protein-DNA species observed by native MS could possibly account for the difficulties in obtaining an X-ray crystal structure of the EthR-DNA complex thus far. A longer 106 bp DNA sequence (DNA₁₀₆) encompassing the entire *ethA-R* intergenic region also gave rise to EthR₆-DNA₁₀₆ and EthR₄-DNA₁₀₆ complexes when incubated with EthR (Fig. S10, ESI[†]), however the quality of the native mass spectra was reduced.

Next, EthR was incubated separately with the DNA duplexes DNA₃₇ and DNA₃₆ (Fig. S1, ESI[†]), and native mass spectra of the resulting complexes were recorded. In the SPR experiments reported previously,⁴ each DNA₃₇ duplex bound to an average of 4.5 EthR molecules, whereas with DNA₃₆, protein-DNA binding was greatly decreased. In native MS, a mixture of EthR (15 μM) and DNA₃₇ (2.5 μM) produced mostly the EthR₄-DNA₃₇ complex, centered around the 19+ charge state, along with some of the EthR₂-DNA₃₇ complex and a small amount of the EthR₃-DNA₃₇ complex (Fig. 2a). With DNA₃₆, mainly EthR₂-DNA₃₆ complexes

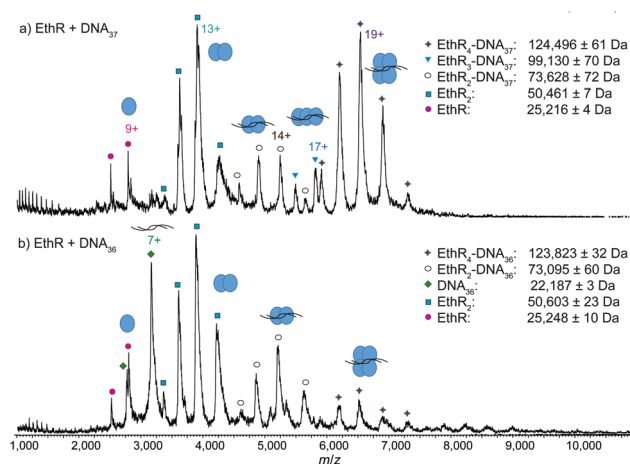


Fig. 2 Native MS showing reduced stoichiometry of EthR with the shorter DNA₃₇ and DNA₃₆ sequences. MS spectra of (a) EthR and DNA₃₇ in a 6:1 ratio, showing the formation of mainly EthR₄-DNA₃₇ complex, some EthR₂-DNA₃₇ complex, and a trace of EthR₃-DNA₃₇ complex, and (b) EthR and DNA₃₆ in a 6:1 ratio, showing formation of mainly EthR₂-DNA₃₆ complex and some EthR₄-DNA₃₆ complex.



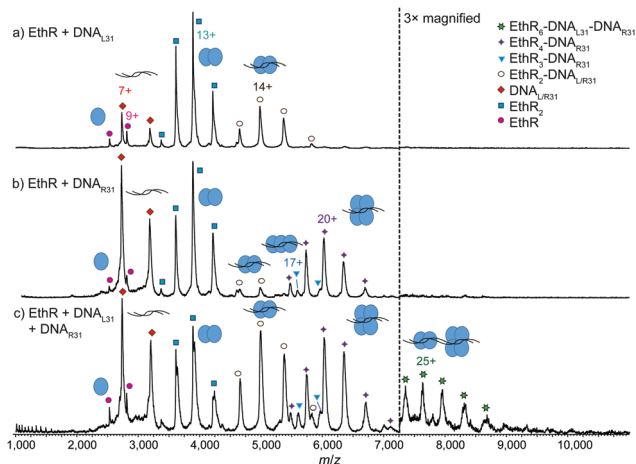


Fig. 3 Native MS showing recapitulation of the EthR₆-DNA complex from two independent half-sites. MS spectra of (a) EthR and DNA_{L31} in a 6 : 1 ratio, showing formation of mainly EthR₂-DNA complex, and (b) EthR and DNA_{R31} in a 6 : 1 ratio, showing formation of mainly EthR₄-DNA complex, along with a small amount of EthR₂-DNA and EthR₃-DNA complexes. (c) When EthR was mixed with both DNA_{L31} and DNA_{R31}, a small amount of the putative EthR₆-DNA_{L31}-DNA_{R31} complex was formed.

were formed, along with a small amount of the EthR₄-DNA₃₆ complex (Fig. 2b). Furthermore, significant quantities of both unbound protein and DNA were observed, which is consistent with the greatly diminished binding capacity of EthR to DNA₃₆.

To further investigate the EthR-DNA interaction, DNA₆₂ was split into two half-sites, the left-hand site (DNA_{L31}) and the right-hand site (DNA_{R31}) (Fig. S1, ESI[†]). Each site contained one copy of an imperfect direct repeat that was thought to be responsible for the EthR-DNA binding interaction.⁴ When EthR (15 μM) was incubated with DNA_{L31} (2.5 μM), only EthR₂-DNA_{L31} complexes were formed (Fig. 3a). On the other hand, mainly EthR₄-DNA_{R31} complexes were observed with DNA_{R31}, along with a small amount of EthR₂-DNA_{R31} and EthR₃-DNA_{R31} species (Fig. 3b). As before, the significant quantities of both unbound protein and DNA that are observed suggests that the interactions between EthR and the individual half-sites are relatively weak.

Intriguingly, when EthR was incubated with both DNA_{L31} and DNA_{R31} at the same time, a small amount of higher-order species could be detected that could be putatively assigned as the EthR₆-DNA_{L31}-DNA_{R31} complex (189 872 ± 23 Da) (Fig. 3c). This complex could be formed from the association of the EthR₂-DNA_{L31} complex with the EthR₄-DNA_{R31} complex in solution. This interaction appears to be asymmetric, as homodimeric (EthR₂-DNA_{L31})₂ or (EthR₄-DNA_{R31})₂ species were not detected when EthR was treated with DNA_{L31} or DNA_{R31} separately. Additionally, DNA_{L31} and DNA_{R31} do not directly associate with each other in the absence of EthR (Fig. S11, ESI[†]), indicating that some kind of communication must exist between EthR and the DNA in order to form the putative EthR₆-DNA_{L31}-DNA_{R31} complex.

The EthR-DNA interaction was also investigated using isothermal titration calorimetry (ITC). EthR was titrated into DNA₆₂, generating a complex, non-sigmoidal binding isotherm

(Fig. S12, ESI[†]) that was analyzed using AFFINImeter software (S4SD). A stoichiometric equilibrium binding model was designed that assumed the stepwise formation of the EthR₆-DNA complex from free EthR dimers and DNA₆₂, proceeding through EthR₂-DNA and EthR₄-DNA intermediates (*i.e.*, EthR₂ + DNA₆₂ ⇌ EthR₂-DNA₆₂ ⇌ EthR₄-DNA₆₂ ⇌ EthR₆-DNA₆₂). Fitting of the data to this model revealed a stoichiometry of 2.9 ± 0.1 EthR dimers per duplex of DNA₆₂, which is consistent with the native MS data. The binding affinities of the first and second dimers to DNA₆₂ were identical within experimental error ($K_{D(1)} = 3.8 \pm 0.8 \mu\text{M}$, $K_{D(2)} = 3.6 \pm 0.6 \mu\text{M}$). The third EthR dimer binds to DNA₆₂ with weaker affinity ($K_{D(3)} = 10 \pm 3 \mu\text{M}$). The EthR-DNA₆₂ binding affinities derived from ITC in this work are about an order of magnitude weaker than those previously determined by SPR for the EthR-DNA₁₀₆ interaction (average $K_D = 146 \text{ nM}$).⁴

The calculated thermodynamic parameters indicate that the binding of the first EthR dimer to DNA is entropically favorable ($T\Delta S = +12.1 \pm 0.4 \text{ kcal mol}^{-1}$) but enthalpically unfavorable ($\Delta H = +4.7 \pm 0.4 \text{ kcal mol}^{-1}$) (Fig. 4). The favorable increase in entropy may be due to the release of counterions or solvent molecules that were associated with the DNA.¹⁶ However, the enthalpic penalty of binding stands in contrast to that observed for most major groove-binding proteins.¹⁷ This suggests that significant structural rearrangement takes place in EthR and/or the DNA to accommodate binding of the first EthR dimer. Similar to what has been observed with QacR,¹⁸ which binds to DNA as a dimer of dimers, this structural rearrangement could then present the DNA in a conformation that readily accepts the second dimer, thus accounting for the positive cooperativity of the EthR-DNA interaction. Indeed, binding of the second EthR dimer is driven almost entirely by enthalpy ($\Delta H = -6.2 \pm 0.6 \text{ kcal mol}^{-1}$) with only a minor entropic component ($T\Delta S = -1.3 \pm 0.6 \text{ kcal mol}^{-1}$). The third dimer binds *via* a combination of favorable enthalpic ($\Delta H = -2.1 \pm 0.6 \text{ kcal mol}^{-1}$) and entropic ($T\Delta S = -4.7 \pm 0.6 \text{ kcal mol}^{-1}$) terms.

The discrepancy in the stoichiometry of the EthR-DNA complex as determined by native MS and ITC *versus* the



Fig. 4 Thermodynamic parameters of the EthR-DNA₆₂ interaction as determined by ITC. ΔG , ΔH and $-T\Delta S$ values are shown for the binding of the first, second and third EthR dimers with DNA. Moles of EthR are given as the dimer.



previous SPR analysis⁴ may be a consequence of the correction that was applied to the SPR data. In that experiment, a correction factor of 0.73 was applied to the response of DNA, reflecting the different molar refractive indices of DNA *versus* proteins.¹⁹ However, more recent work has shown that proteins and nucleic acids behave similarly in SPR, and so there may have been no need for this correction factor.²⁰ When this is taken into account, the previous SPR data instead suggest that each DNA₆₂ duplex binds to 6.3 EthR molecules, while each DNA₃₇ duplex binds to 3.3 EthR molecules, both numbers being consistent with the present work.

In conclusion, structural insights into the interaction between EthR and its operator have been obtained by native MS. While EthR was observed to exist as a dimer in solution as expected, the interaction of EthR with the full-length operator produced EthR₆-DNA and EthR₄-DNA complexes. The stoichiometry of the EthR-DNA complex was confirmed by ITC, which also revealed thermodynamic parameters that were consistent with a cooperative mode of binding. This study also highlights the capability of native MS to provide structural information on macromolecular assemblies, including where heterogeneous mixtures of complexes exist that are intractable to crystallization. Experiments are being conducted to provide structural-level detail of the EthR-DNA complex and to elucidate the precise mechanism of the EthR-DNA interaction.

The authors thank Eva Muñoz (AFFINImeter) for helpful discussion on the ITC analysis. D. S.-H. Chan acknowledges the support of the Croucher Foundation and the Cambridge Commonwealth, European and International Trust for receipt of a Croucher Cambridge International Scholarship. W.-G. Seetoh was supported by the Agency for Science, Technology and Research (A*STAR) Singapore (PhD sponsorship) and the Wellcome Trust Strategic Award (090340/Z/09/Z). B. N. McConnell acknowledges Cambridge Australia Scholarships for the award of a Poynton Scholarship, the Cambridge Philosophical Society and the Access to Learning Fund. S. E. Thomas is supported by

the Cystic Fibrosis Trust. V. Mendes and M. Blaszczyk acknowledge the Bill & Melinda Gates Foundation (subcontract by the Foundation for the National Institutes of Health – NIH) (OPP1024021).

Notes and references

- 1 World Health Organization, Global Tuberculosis Report, 2015.
- 2 T. A. Vannelli, A. Dykman and P. R. Ortiz de Montellano, *J. Biol. Chem.*, 2002, **277**, 12824.
- 3 X. Duan, X. Xiang and J. Xie, *FEMS Microbiol. Lett.*, 2014, **360**, 87.
- 4 J. Engohang-Ndong, D. Baillat, M. Aumercier, F. Bellefontaine, G. S. Besra, C. Locht and A. R. Baulard, *Mol. Microbiol.*, 2004, **51**, 175.
- 5 N. Willand, B. Dirie, X. Carette, P. Bifani, A. Singhal, M. Desroses, F. Leroux, E. Willey, V. Mathys, R. Deprez-Poulain, G. Delcroix, F. Frenois, M. Aumercier, C. Locht, V. Villeret, B. Deprez and A. R. Baulard, *Nat. Med.*, 2009, **15**, 537.
- 6 J. L. Ramos, M. Martínez-Bueno, A. J. Molina-Henares, W. Terán, K. Watanabe, X. Zhang, M. T. Gallegos, R. Brennan and R. Tobes, *Microbiol. Mol. Biol. Rev.*, 2005, **69**, 326.
- 7 F. Frénois, J. Engohang-Ndong, C. Locht, A. R. Baulard and V. Villeret, *Mol. Cell*, 2004, **16**, 301.
- 8 L. G. Dover, P. E. Corsino, I. R. Daniels, S. L. Cocklin, V. Tatituri, G. S. Besra and K. Fütterer, *J. Mol. Biol.*, 2004, **340**, 1095.
- 9 H. Hernandez and C. V. Robinson, *Nat. Protoc.*, 2007, **2**, 715.
- 10 G. R. Hilton and J. L. P. Benesch, *J. R. Soc., Interface*, 2012, **9**, 801.
- 11 A. Butterer, C. Pernstich, R. M. Smith, F. Sobott, M. D. Szczelkun and J. Tóth, *Nucleic Acids Res.*, 2014, **42**, 5139.
- 12 A. Politis, A. Y. Park, Z. Hall, B. T. Ruotolo and C. V. Robinson, *J. Mol. Biol.*, 2013, **425**, 4790.
- 13 N.-T. Nguyen-Huynh, J. Osz, C. Peluso-Iltis, N. Rochel, N. Potier and E. Leize-Wagner, *Biophys. Chem.*, 2016, **210**, 2.
- 14 V. Gabelica, C. Vreuls, P. Filée, V. Duval, B. Joris and E. D. Pauw, *Rapid Commun. Mass Spectrom.*, 2002, **16**, 1723.
- 15 F. Rosu, S. Pirotte, E. D. Pauw and V. Gabelica, *Int. J. Mass Spectrom.*, 2006, **253**, 156.
- 16 D. C. Mikles, V. Bhat, B. J. Schuchardt, C. B. McDonald and A. Farooq, *J. Mol. Recognit.*, 2014, **27**, 82.
- 17 P. L. Privalov, A. I. Dragan, C. Crane-Robinson, K. J. Breslauer, D. P. Remeta and C. A. S. A. Minetti, *J. Mol. Biol.*, 2007, **365**, 1.
- 18 M. A. Schumacher, M. C. Miller, S. Grkovic, M. H. Brown, R. A. Skurray and R. G. Brennan, *EMBO J.*, 2002, **21**, 1210.
- 19 C. Speck, C. Weigel and W. Messer, *EMBO J.*, 1999, **18**, 6169.
- 20 C. Di Primo and I. Lebars, *Anal. Biochem.*, 2007, **368**, 148.

