



Cite this: *Chem. Commun.*, 2017, 53, 1064

Received 18th October 2016,
Accepted 17th December 2016

DOI: 10.1039/c6cc08372b

www.rsc.org/chemcomm

Development of a reversible fluorescent probe for reactive sulfur species, sulfane sulfur, and its biological application†

Yoko Takano,^a Kenjiro Hanaoka,^{*a} Kazuhito Shimamoto,^a Ryo Miyamoto,^b Toru Komatsu,^{ac} Tasuku Ueno,^a Takuya Terai,^a Hideo Kimura,^b Tetsuo Nagano^d and Yasuteru Urano^{*aef}

We report a reversible off/on fluorescent probe for monitoring concentration changes of sulfane sulfur by utilizing the unique ability of sulfane sulfur to bind reversibly to other sulfur atoms and the intramolecular spirocyclization reaction of xanthene dyes. It reversibly visualized sulfane sulfur in living A549 cells and primary-cultured hippocampal astrocytes.

Sulfane sulfur is one of reactive sulfur species, and is a form of sulfur with six valence electrons and no charge (S⁰). Various sulfane sulfur molecules exist in biological systems, in the forms of persulfides (R–S–SH), polysulfides (R–S–S_n–S–R), hydrogen polysulfides (H₂S_n), and protein-bound cysteine persulfide.¹ Low-molecular-weight persulfides such as cysteine and glutathione persulfides exist at μM order concentration inside cells.² Persulfides are highly reducing and nucleophilic, and therefore they are capable of scavenging oxidants and intracellular electrophiles. Further, some physiological phenomena that were originally attributed to the bioactivity of H₂S may actually be mediated by sulfane sulfur, though this remains controversial;³ one example is the S-sulfhydration posttranslational modification, which was considered to be due to H₂S activity.⁴ However, recent studies have demonstrated that persulfides are more effective than H₂S

for S-sulfhydration; for example, Dick *et al.* reported that lipid phosphatase PTEN (phosphatase and tensin homolog) was oxidized by polysulfide, resulting in its inhibition.⁵ It is also reported that sulfane sulfur species are biosynthesized by three enzymes which have generally been regarded as H₂S-producers. Akaike *et al.* demonstrated that cystathionine γ-lyase (CSE) and cystathionine β-synthase (CBS) are capable of directly generating cysteine persulfide, Cys-SSH, from cystine,² and Kimura *et al.* reported that H₂S₃ and H₂S₂, as well as H₂S, are produced from 3-mercaptopyruvate (3MP) by 3-mercaptopyruvate sulfurtransferase (3MST) in the brain.⁶

The increasing recognition of the importance of sulfane sulfur in biological systems has led to the development of various detection methods for sulfane sulfur. The unique chemical characteristics of sulfane sulfur species have been utilized in fluorescent probe design. For example, persulfides are more acidic and nucleophilic than the corresponding thiols by 1–2 pK_a units due to the α-effect.^{7,8} On the other hand, tautomerization of persulfide to thiosulfoxide also generates reactive species that are very electrophilic and highly reactive to nucleophiles. Moreover, sulfane sulfur can reversibly bind to other sulfur atoms. Based on these characteristics, fluorescent probes such as the SSP, DSP and PSP series have recently been developed by Xian *et al.* to detect sulfane sulfur selectively in terms of a fluorescence increase.^{9–11} However, these probes react irreversibly, and therefore they cannot visualize the dynamics of intracellular sulfane sulfur. So, we set out to develop a reversible fluorescent probe to monitor the intracellular dynamics of sulfane sulfur.

For this purpose, we focused on two facts: (1) the unique ability of sulfane sulfur to reversibly bind to other sulfur atoms and (2) the intramolecular spirocyclization reaction of xanthene dyes. As shown in Fig. 1a, we anticipated that the introduction of a thiol group into the benzene moiety of xanthene dyes would allow persulfide to be generated by transfer of sulfur from sulfane sulfur species to the thiol group, and then intramolecular spirocyclization would occur because of the high nucleophilicity of persulfide. Indeed, we found that 2-thio RB showed an absorbance decrease in the visible region upon addition of 50 μM

^a Graduate School of Pharmaceutical Sciences, The University of Tokyo, 7-3-1, Hongo, Bunkyo-ku, Tokyo 113-0033, Japan. E-mail: uranokun@m.u-tokyo.ac.jp, khanaoka@mol.f.u-tokyo.ac.jp

^b Department of Molecular Pharmacology, National Institute of Neuroscience, National Center of Neurology and Psychiatry, 4-1-1 Ogawa-Higashi, Kodaira, Tokyo 187-8502, Japan

^c PRESTO, Japan Science and Technology Agency (JST), 4-1-8 Honcho, Kawaguchi, Saitama 332-0012, Japan

^d Drug Discovery Initiative, The University of Tokyo, 7-3-1, Hongo, Bunkyo-ku, Tokyo 113-0033, Japan

^e Graduate School of Medicine, The University of Tokyo, 7-3-1 Hongo, Bunkyo-ku, Tokyo 113-0033, Japan

^f AMED CREST (Japan) Agency for Medical Research and Development 1-7-1 Otemachi, Chiyoda-ku, Tokyo 100-0004, Japan

† Electronic supplementary information (ESI) available: Synthesis, experimental details, characterization of compounds, *in vitro* absorption and fluorescence spectra measurements and the fluorescence imaging of live cells. See DOI: 10.1039/c6cc08372b



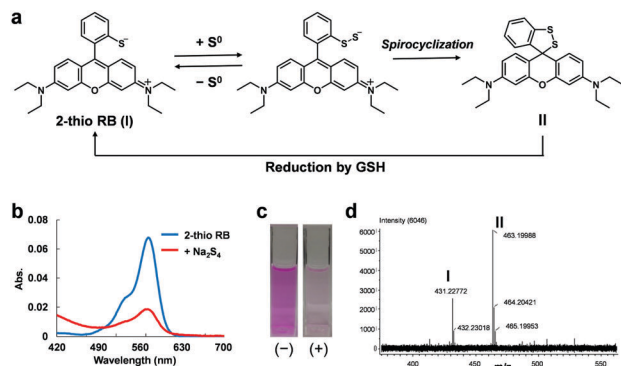


Fig. 1 (a) Proposed mechanism of the intramolecular spirocyclization and the ring-opening reaction of 2-thio RB. (b) Absorption spectra of 1 μM 2-thio RB before (blue) and after (red) reaction with 50 μM Na_2S_4 . Spectra were measured in 100 mM sodium phosphate buffer (pH 7.4) containing 100 μM GSH to reduce the intermolecular disulfide bond of dimerized 2-thio RB. Cosolvent: 0.1% DMSO. (c) Photos of 2-thio RB before (–) and after (+) reaction with 50 μM Na_2S_4 . (d) ESI-MS spectrum of the reaction mixture of 2-thio RB and Na_2S_4 . Peaks I and II were assigned to 2-thio RB ($[M]^+$) and its spirocyclized form ($[M + H]^+$) shown in (a), respectively.

Na_2S_4 (Fig. 1b and c). To examine whether or not this absorbance decrease is associated with spirocyclization of 2-thio RB, we synthesized 2-Me, 2-OH, and 2-SMe rhodamine B and examined their reactivity with sulfane sulfur (Fig. S1, ESI[†]). These compounds did not show any absorbance decrease. This result suggests that direct nucleophilic attack of Na_2S_4 on the xantheno moiety does not occur. We also measured the ESI-MS spectrum of the reaction mixture of 2-thio RB and Na_2S_4 , and observed a characteristic MS peak of the spirocyclized form of 2-thio RB (Fig. 1d). These results confirmed that the absorbance decrease at 560 nm is due to formation of a persulfide group, followed by intramolecular spirocyclization.

Next, we examined whether this compound shows the same absorbance decrease in the presence of 5 mM GSH, because GSH is reported to be present at the concentration of 0.5–10 mM inside cells.¹² The absorbance decrease upon addition of Na_2S_4 occurred even in the presence of 5 mM GSH, but the absorbance gradually recovered thereafter (Fig. S2a, ESI[†]). This recovery was not observed in the absence of 5 mM GSH (Fig. S2b, ESI[†]). So, we think that GSH reduced the intramolecular disulfide bond of the spirocycle, regenerating the open form of 2-thio RB, as shown in Fig. 1a, and thereby resulting in recovery of the absorbance. Further, since 2-thio RB is weakly fluorescent, probably due to photoinduced electron transfer (PeT),¹³ we expected that it would act as a fluorescence quencher. Therefore, we considered that 2-thio RB would be available as the reversible off/on switching moiety of a fluorescent probe for sulfane sulfur.

Accordingly, we designed and synthesized a novel fluorescent probe for sulfane sulfur, SSip-1, in which 2-thio RB serves as the Förster resonance energy transfer (FRET) acceptor (fluorescence quencher) and fluorescein as the FRET donor (Fig. 2a). The fluorescence spectrum of fluorescein has a large overlap integral with the absorption spectrum of 2-thio RB, and thus we expected that energy transfer from fluorescein to 2-thio RB would occur efficiently *via* FRET.¹⁴



Fig. 2 (a) Chemical structure of SSip-1 and reaction mechanism with sulfane sulfur. (b and c) Changes of absorption (b) and fluorescence (c) spectra of 1 μM SSip-1 before (blue) and after (red) reaction with 50 μM Na_2S_4 . Both spectra were measured in 100 mM sodium phosphate buffer (pH 7.4) containing 100 μM GSH, 0.1% DMSO as a cosolvent, and 1 mg mL^{-1} BSA. (d) Photos showing fluorescence of SSip-1 before (–) and after (+) reaction with 50 μM Na_2S_4 (irradiated at 365 nm with a handy UV lamp).

The fluorescence and absorbance spectra of the probe were measured (Fig. 2b–d). The probe showed absorption maxima (λ_{max}) at 480 and 560 nm, and weak fluorescence peaks derived from both fluorescein and rhodamine were also observed. Upon addition of 50 μM Na_2S_4 to the solution, the absorbance at 560 nm decreased and the fluorescence at 525 nm increased within 1 min. The apparent fluorescence quantum yield increased from 0.015 to 0.20 (for details, see ESI[†]). The fluorescence intensity was well correlated to the concentration of added Na_2S_4 in the range of 0.5–20 μM in the absence of GSH (Fig. 3a). The detection limit was found to be 0.42 μM .

We next examined whether this probe can reversibly respond to sulfane sulfur by addition of 5 mM GSH (Fig. 3b). Treatment of SSip-1 with 50 μM Na_2S_4 resulted in 15-fold fluorescence increase due to intramolecular spirocyclization of the FRET acceptor (2-thio RB moiety). Subsequently, the intramolecular disulfide bond of the spirocycle was slowly reduced by GSH, causing the fluorescence at 525 nm to decrease due to the restoration of FRET between fluorescein and 2-thio RB. The fluorescence intensity values were well correlated to the amount of added Na_2S_4 even in the presence of 5 mM GSH (Fig. S3, ESI[†]). The fluorescence intensity probably depends upon the equilibrium between sulfane sulfur and GSH, and therefore this probe can monitor the concentration change of sulfane sulfur. But, to measure the exact concentration of sulfane sulfur in equilibrium with GSH, we would need to prepare a standard curve using other methods, such as LC-MS analysis. The fluorescence decrease was also correlated to the amount of added GSH (Fig. S4, ESI[†]). Polysulfides such as Na_2S_4 are rapidly decomposed by GSH through thiol–disulfide exchange, releasing H_2S .¹⁵ We found that the reversible response to sulfane sulfur could be repeated at least four times with no loss of dynamic range of the probe, *i.e.*, the fluorescence intensity maximum (Fig. S5, ESI[†]). As the addition of Na_2S_4 was repeated, we interestingly found that the fluorescence intensity did not decrease completely to the



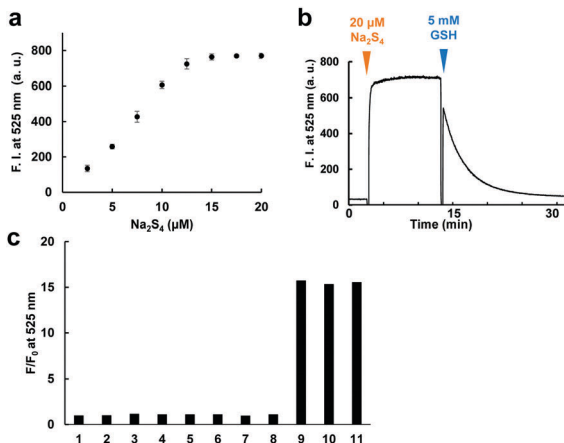


Fig. 3 (a) Fluorescence intensity of SSip-1 (1 μM) upon addition of various concentrations of Na_2S_4 (0, 2.5, 5, 7.5, 10, 12.5, 15, 17.5, 20 μM). Fluorescence intensity was measured 60 min after addition of Na_2S_4 . (b) Fluorescence intensity change of SSip-1 after addition of 20 μM Na_2S_4 followed by 5 mM GSH. The fluorescence intensity (525 nm) of the reaction mixture was monitored. $\lambda_{\text{ex}} = 470$ nm. SSip-1 was treated with 20 μM Na_2S_4 and then reduced with 5 mM GSH. (c) Fluorescence enhancement of 1 μM SSip-1 measured in 100 mM sodium phosphate buffer (pH 7.4) with 10 μM TCEP (to reduce the intermolecular disulfide bond of dimerized SSip-1) upon addition of various thiol species. Bars represent the relative fluorescence intensities 1 min after addition of various thiol species. The reactions of 1 μM SSip-1 with (1) 5 mM GSH, (2) 1 mM L-Cys, (3) 1 mM L-Hcys, (4) 1 mM GSSG, (5) 100 μM $\text{Na}_2\text{S}_2\text{O}_3$, (6) 100 μM Na_2SO_3 , (7) 100 μM Na_2SO_4 , (8) 50 μM Na_2S , (9) 50 μM Na_2S_2 , (10) 50 μM Na_2S_3 and (11) 50 μM Na_2S_4 were examined.

original level even at 60 min after addition of Na_2S_4 . We confirmed that this result was not due to decomposition of the probe by measuring the fluorescence increase upon addition of SSip-1 to premixed solutions of various concentrations of Na_2S_4 and 5 mM GSH (Fig. S6, ESI[†]). We consider that sulfane sulfur may be gradually stored in the reaction mixture due to stabilization by GSH, *i.e.*, sulfane sulfur may exist in the form of glutathione persulfides, *etc.* We also examined the selectivity of SSip-1 for sulfane sulfur. As shown in Fig. 3c, the fluorescence enhancement of SSip-1 occurred only upon addition of polysulfides. No fluorescence increase was observed in the presence of other biothiols, inorganic sulfur compounds, or H_2S . Thus, SSip-1 shows high selectivity for sulfane sulfur.

We next examined the suitability of SSip-1 for fluorescence imaging of intracellular sulfane sulfur. Since this probe was expected to be membrane-impermeable because of its hydrophilicity derived from the carboxyl group and the thiol group, we synthesized diacetylated and thiol-protected SSip-1 (SSip-1 DA) to improve its membrane permeability (Fig. 4a). Indeed, this compound proved to be a membrane-permeable precursor that is converted to SSip-1 by intracellular esterases and reductive conditions probably related to GSH (Fig. S7, ESI[†]). Therefore, A549 cells were incubated with 10 μM SSip-1 DA DMEM for 1 h and then washed with HBSS. Upon addition of 10 μM Na_2S_4 , a large intracellular fluorescence enhancement was observed, while almost no fluorescence was observed in the absence of Na_2S_4 (Fig. S8, ESI[†]). This fluorescence increase was directly related to the concentration of added Na_2S_4 (Fig. S9, ESI[†]). The result of

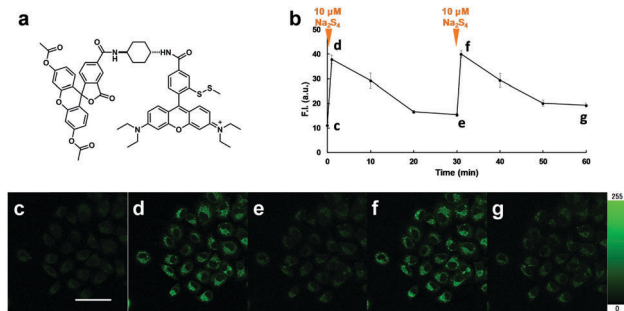


Fig. 4 (a) Chemical structure of SSip-1 DA. (b) Fluorescence intensity change of A549 cells loaded with SSip-1 DA upon repeated additions of 10 μM Na_2S_4 . Data represent the mean \pm SD ($n = 5$). The mean fluorescence intensity of 5 cells is shown in the graph. (c–g) Fluorescence confocal microscopic images of A549 cells loaded with SSip-1 DA upon repeated additions of 10 μM Na_2S_4 . Scale bar: 75 μm .

CCK-8 assay also showed that SSip-1 DA exhibited no cytotoxicity at concentrations up to 100 μM (Fig. S10, ESI[†]). Then, we investigated whether this probe can reversibly detect sulfane sulfur in living cells. A549 cells were loaded with 10 μM SSip-1 DA for 1 h; almost no fluorescence was observed (Fig. 4c). However, addition of 10 μM Na_2S_4 to the extracellular medium resulted in a substantial fluorescence increase in the intracellular region within 1 min (Fig. 4d). During further incubation for 30 min, the intracellular fluorescence decreased to the basal level (Fig. 4e). Second addition of 10 μM Na_2S_4 to the medium resulted in a fluorescence increase in the intracellular region to the same level as that after the first addition of 10 μM Na_2S_4 (Fig. 4f). The fluorescence intensity again decreased to the original level when the cells were incubated for another 30 min (Fig. 4b and g). These results confirm that SSip-1 can reversibly detect sulfane sulfur in living cells. The detection cycle could be repeated at least three times (data not shown).

Finally, we applied SSip-1 DA to primary-cultured hippocampal astrocytes. It is reported that polysulfides induce Ca^{2+} influx in rat astrocytes by activating transient receptor potential (TRP) A1 channels through modification of N-terminal cysteine residues.^{16,17} However, it has not been established whether the activation of TRPA1 channels occurs simultaneously with the increase in intracellular concentration of polysulfides. So, we attempted to visualize the concentration change of intracellular polysulfide in primary-cultured hippocampal astrocytes and also to monitor activation of TRPA1 channels induced by Na_2S_3 by fluorescence imaging of intracellular Ca^{2+} . In this experiment, we used Na_2S_3 as a sulfane sulfur donor because H_2S_3 is a dominant form of H_2S_n produced by 3MST;⁶ Na_2S_3 is known to possess almost the same properties as Na_2S_4 as a sulfane sulfur donor. Hippocampi dissected from embryonic rats were dispersed, and the cells were cultured for 14 days. The cultured astrocytes were loaded with either 10 μM SSip-1 DA or 2 μM Fluo-4 AM (Ca^{2+} indicator) and then Na_2S_3 was applied. Changes in sulfane sulfur and Ca^{2+} concentrations were monitored as changes of fluorescence intensity relative to the corresponding control image acquired before stimulation (Fig. 5). SSip-1 DA successfully visualized the increase of sulfane sulfur concentration in astrocytes,





Fig. 5 Changes in intracellular polysulfide and Ca^{2+} levels induced by Na_2S_3 in cultures of hippocampal astrocytes. (a) Increases in intracellular polysulfide levels induced by addition of Na_2S_3 to the extracellular medium. Na_2S_3 (0.1, 1 or 10 μM) was applied to astrocytes pre-loaded with 10 μM SSip-1 DA for 60 min at 37 $^\circ\text{C}$. (b) Graphic representation of (a). (c) Increases in intracellular Ca^{2+} levels induced by addition of Na_2S_3 to the extracellular medium. Na_2S_3 was applied to astrocytes pre-loaded with 2 μM Fluo-4 AM for 30 min at room temperature. (d) Graphic representation of (c). All data represent the mean \pm SEM ($n = 10$). *: $p < 0.05$.

which was dependent on the amount of added Na_2S_3 (Fig. 5a and b). Reversibility of SSip-1 was also confirmed, *i.e.*, the fluorescence intensity increased after addition of Na_2S_3 , then decreased upon wash-out of the extracellular medium. This procedure was repeated three times with different amounts of added Na_2S_3 . The intracellular Ca^{2+} concentrations also changed, dependently on the amount of added Na_2S_3 (Fig. 5c and d). These results indicate that the extent of Ca^{2+} influx was closely related to the intracellular concentration of polysulfide in the astrocytes.

In summary, we designed a reversible off/on fluorescent probe for sulfane sulfur based on the findings that 2-thio RB reacts with sulfane sulfur to afford an intramolecular spirocycle, and this spirocycle is cleaved in the presence of 5 mM GSH (a typical intracellular concentration). The spirocyclization is accompanied with a marked decrease of absorbance at 560 nm. Since 2-thio RB is weakly fluorescent, we considered that it could

act as a quencher, and could serve a reversible fluorescence off/on switching moiety. Therefore, we synthesized SSip-1, in which 2-thio RB serves as a FRET acceptor and fluorescein as a FRET donor. We found that SSip-1 reacts with sulfane sulfur to afford a highly fluorescent, intramolecularly spirocyclized structure, which is subsequently cleaved by intracellular GSH to regenerate the weakly fluorescent open form. This probe successfully and repeatedly visualized concentration changes (both increase and decrease) of intracellular sulfane sulfur in living cells. We expect that this probe will be a useful tool for exploring the physiological functions of sulfane sulfur.

Notes and references

- J. I. Toohey, *Anal. Biochem.*, 2011, **413**, 1.
- T. Ida, T. Sawa, H. Ihara, Y. Tsuchiya, Y. Watanabe, Y. Kumagai, M. Suematsu, H. Motohashi, S. Fujii, T. Matsunaga, M. Yamamoto, K. Ono, N. O. Devarie-Baez, M. Xian, J. M. Fukuto and T. Akaike, *Proc. Natl. Acad. Sci. U. S. A.*, 2014, **111**, 7606.
- P. K. Yadav, M. Martinov, V. Vitvitsky, J. Seravalli, R. Wedmann, M. R. Filipovic and R. Banerjee, *J. Am. Chem. Soc.*, 2016, **138**, 289.
- A. K. Mustafa, M. M. Gadalla, N. Sen, S. Kim, W. Mu, S. K. Gazi, R. K. Barrow, G. Yang, R. Wang and S. H. Snyder, *Sci. Signaling*, 2009, **96**, ra72.
- R. Greiner, Z. Pálkás, K. Bäsell, D. Becher, H. Antelmann, P. Nagy and T. P. Dick, *Antioxid. Redox Signaling*, 2013, **15**, 1749.
- Y. Kimura, Y. Toyofuku, S. Koike, N. Shibuya, N. Nagahara, D. Lefler, Y. Ogasawara and H. Kimura, *Sci. Rep.*, 2015, **5**, 14774.
- C. M. Park, L. Weerasinghe, J. J. Day, J. M. Fukuto and M. Xian, *Mol. Biosyst.*, 2015, **11**, 1775.
- K. Ono, T. Akaike, T. Sawa, Y. Kumagai, D. Wink, D. J. Tantillo, A. J. Hobbs, P. Nagy, M. Xian, J. Lin and J. M. Fukuto, *Free Radical Biol. Med.*, 2014, **77**, 82.
- W. Chen, C. Liu, B. Peng, Y. Zhao, A. Pacheco and M. Xian, *Chem. Sci.*, 2013, **4**, 2892.
- C. Liu, W. Chen, W. Shi, B. Peng, Y. Zhao, H. Ma and M. Xian, *J. Am. Chem. Soc.*, 2014, **136**, 7257.
- W. Chen, E. W. Rosser, T. Matsunaga, A. Pacheco, T. Akaike and M. Xian, *Angew. Chem., Int. Ed.*, 2015, **54**, 13961.
- G. Wu, Y.-Z. Lu, S. Yang, J. R. Lupton and N. D. Turner, *J. Nutr.*, 2004, **134**, 489.
- Y. Urano, M. Kamiya, K. Kanda, T. Ueno, K. Hirose and T. Nagano, *J. Am. Chem. Soc.*, 2005, **127**, 4888.
- Z. X. Han, X. B. Zhang, Z. Li, Y. J. Gong, X. Y. Wu, Z. Jin, C. M. He, L. X. Jian, J. Zhang, G. L. Shen and R. Q. Yu, *Anal. Chem.*, 2010, **82**, 3108.
- D. Liang, H. Wu, M. W. Wong and D. Huang, *Org. Lett.*, 2015, **17**, 4196.
- Y. Kimura, Y. Mikami, K. Osumi, M. Tsugane, J. Oka and H. Kimura, *FASEB J.*, 2013, **27**, 2451.
- Y. Hatakeyama, K. Takahashi, M. Tominaga, H. Kimura and T. Ohta, *Mol. Pain*, 2015, **11**, 24.

