

Cite this: *Chem. Sci.*, 2019, 10, 7619

All publication charges for this article have been paid for by the Royal Society of Chemistry

Received 1st June 2019  
Accepted 25th June 2019

DOI: 10.1039/c9sc02670c

rsc.li/chemical-science

# Heterogeneous Rh and Rh/Ag bimetallic nanoparticle catalysts immobilized on chiral polymers†

Hyemin Min, Hiroyuki Miyamura, Tomohiro Yasukawa and Shū Kobayashi \*

The development of heterogeneous chiral catalysts has lagged far behind that of homogeneous chiral catalysts in spite of their advantages, such as environmental friendliness for a sustainable society. We describe herein novel heterogeneous chiral Rh and Rh/Ag bimetallic nanoparticle catalysts consisting of polystyrene-based polymers with chiral diene moieties. The catalysts enable high-to-excellent yields and enantioselectivities to be obtained in asymmetric 1,4-addition reactions of arylboronic acids with  $\alpha,\beta$ -unsaturated carbonyl compounds such as ketones, esters, and amides, and in other asymmetric reactions. The catalysts could be readily recovered by simple filtration and reused; they could also be applied to continuous-flow synthesis. We also discuss the nature of possible reaction species based on XPS analysis.

## Introduction

Catalytic asymmetric C–C bond-forming reactions provide among the most efficient protocols for preparing optically active compounds. While much progress has been made with homogeneous chiral complexes as catalysts, the development of heterogeneous chiral catalysts has lagged far behind in spite of their advantages, such as environmental friendliness for a sustainable society.<sup>1</sup> A general method for the preparation of heterogeneous chiral catalysts involves formation of metal–ligand complexes from supported/immobilized chiral ligands and metal sources.<sup>2–5</sup> However, these metal–ligand complexes are often unstable, and metal leaching and decomposition of ligands sometimes occur.<sup>5,6</sup> The use of chiral metal nanoparticles (NPs) can address these issues because of their high activity/selectivity as well as their robustness.<sup>7–9</sup> Indeed, some metal NP catalysts immobilized on achiral supports, such as metal oxides and activated carbon, with externally added chiral modifiers have been reported for some asymmetric reactions.<sup>10,11</sup> In these cases, unfortunately, collapse of the chiral reaction environments can easily occur and recovery of chiral ligands is difficult. To overcome these problems, a few catalysts in which metal NPs were immobilized on chiral supports were reported. Glorius and coworkers synthesized Pd NPs supported on Fe<sub>3</sub>O<sub>4</sub> that contained chiral N-heterocyclic carbene moieties, and this catalyst was applied to asymmetric allylation of 4-nitrobenzaldehyde with allyltributyltin.<sup>12</sup> Toste, Somorjai, and coworkers reported Au NPs in a chiral self-assembled

monolayer as an efficient catalyst for intermolecular cyclopropane synthesis.<sup>13</sup> In both cases, however, only moderate enantioselectivities were observed, and the development of heterogeneous chiral NP catalysts with chiral supports for asymmetric C–C bond-forming reactions that show high enantioselectivity is still desired.<sup>14</sup>

Since our initial study in 2012, we have reported on asymmetric 1,4-addition reactions of arylboronic acids to  $\alpha,\beta$ -unsaturated carbonyl compounds, which constitute one of the most useful methods for the preparation of chiral aryl-substituted compounds<sup>15–17</sup> using Rh/Ag bimetallic NP catalysts with externally added binap or chiral diene ligands. Excellent yields and outstanding enantioselectivities were observed, especially with amide-substituted chiral diene ligands, without metal leaching.<sup>18–23</sup> Recovery and reuse of these catalysts was possible because of their robustness; however, in every reaction for the recovery and reuse, the chiral ligand had to be externally added. Moreover, in a continuous-flow reaction, the chiral ligand must flow together with substrates.

Herein, we describe novel heterogeneous chiral Rh and Rh/Ag bimetallic NP catalysts consisting of polystyrene-based polymers with chiral diene moieties (Scheme 1). The catalysts successfully promoted asymmetric 1,4-addition reactions of arylboronic acid with  $\alpha,\beta$ -unsaturated carbonyl compounds and other asymmetric reactions. The catalysts could be readily recovered by simple filtration and reused, and further applied to continuous-flow synthesis.

## Results and discussion

### Preparation of polymers and catalysts

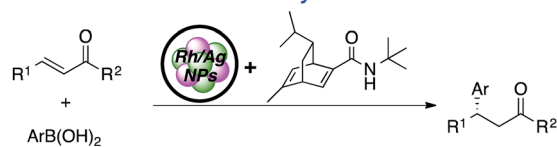
Chiral polymer **1** was prepared by copolymerization of styrene, trimethoxysilylstyrene (a cross-linking moiety),<sup>24,25</sup> and a chiral

Department of Chemistry, School of Science, The University of Tokyo, Hongo, Bunkyo-ku, Tokyo 113-0033, Japan. E-mail: shu\_kobayashi@chem.s.u-tokyo.ac.jp

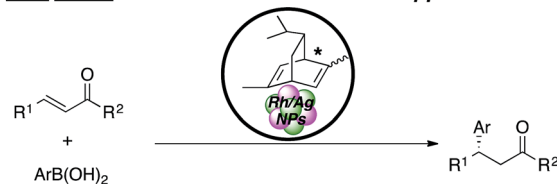
† Electronic supplementary information (ESI) available. See DOI: 10.1039/c9sc02670c



**Previous Work:** NPs immobilized on achiral supports with externally added chiral modifiers

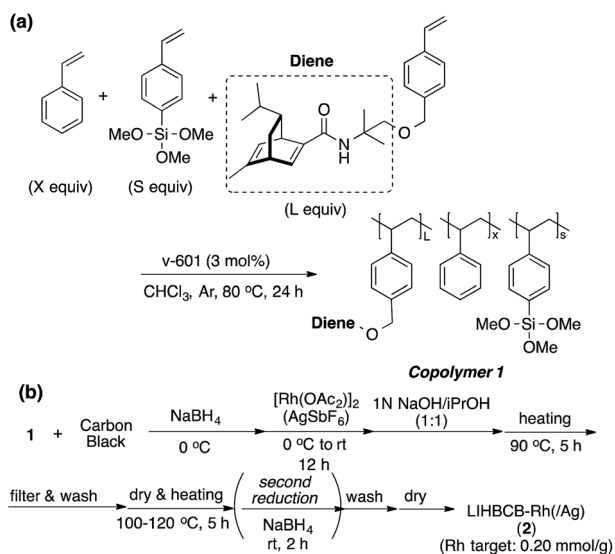


**This Work:** NPs immobilized on chiral supports



Scheme 1 Concept scheme for this work.

diene monomer, according to Scheme 2(a). By using copolymer **1** and carbon black (CB) as a second support,<sup>26,27</sup> Rh and Rh/Ag bimetallic NP catalysts were prepared as shown in Scheme 2(b). Rh or Rh/Ag bimetallic NPs were formed from reduction with NaBH<sub>4</sub>, and then cross-linking was conducted by heating under basic conditions in a sol-gel process. A second reduction with NaBH<sub>4</sub> was conducted to increase the activity of the catalyst in some cases.<sup>18</sup> STEM and EDX mapping experiments showed that NPs of 4 nm average size were formed and, in the case of Rh/Ag, an alloyed conformation was confirmed, while the ratios of Rh and Ag were random, depending on NPs (see the ESI, Fig. S1–S5†). In this chiral ligand-immobilized organic-inorganic hybrid CB Rh NP catalyst (LIHBCB-Rh (**2**)), metal NPs were stabilized by multiple weak interactions from abundant  $\pi$ -electrons of the benzene rings, and these interactions meant that active but stable metal NP catalysts could be realized.<sup>28</sup> Actual loadings of Rh, determined by Inductively coupled plasma atomic emission spectroscopy (ICP-AES) analyses, were close to the target loadings.



Scheme 2 Preparation of chiral polymer and catalyst.

Table 1 Effect of the amount of ligand incorporation

Entry	Cat.	X/S/L (target)	Yield (%)	Ee <sup>a</sup> (%)
1	<b>2a</b>	7 : 2 : 1	79	97
2	<b>2b</b>	6 : 2 : 2	98	98
3	<b>2c</b>	5 : 2 : 3	98	98

<sup>a</sup> Determined by HPLC analysis.

First, we prepared catalysts **2a**, **2b**, and **2c** containing different amounts of the chiral diene ligand moiety while maintaining the amount of the cross-linking moiety (trimethoxysilyl group). The ratios of the monomer moieties were determined by <sup>1</sup>H NMR analysis, and almost the same amount of the ligand moiety as the target amount was immobilized. Actual Rh loadings were also close to the target loadings of Rh (0.2 mmol g<sup>-1</sup>). The activity of the LIHBCB-Rh catalysts (**2a**, **2b**, and **2c**) was estimated in the 1,4-addition of phenylboronic acid (**4a**) to 2-cyclohexenone (**3a**) (Table 1). When around 10% (mole fraction) of the ligand monomer moiety (L) was immobilized (**2a**), an excellent enantioselectivity was obtained, but with a yield of 79% (Table 1, entry 1). When the ratio of L in the polymer was increased to 20% (**2b**), the yield was improved and high ee was maintained (entry 2); the same result was observed with a further increased ratio of L (**2c**) (entry 3). Thus, an excess amount of L against Rh was required to achieve a high yield. On the other hand, excellent enantioselectivities were observed in all cases. Based on these results, the polymer that was used in catalyst **2b** was used for further optimizations.

### Optimization of catalyst and reaction conditions with $\alpha,\beta$ -unsaturated acyclic ketone substrate

LIHBCB-Rh (**2b**) showed good activity in the reaction with  $\alpha,\beta$ -unsaturated cyclic ketone substrate **3a**. We then applied this catalyst to the  $\alpha,\beta$ -unsaturated acyclic ketone substrate benzalacetone (**3b**) (Table 2).

In the reaction between benzalacetone (**3b**) and 4-methoxyphenylboronic acid (**4b**) under the same conditions, the desired product was obtained in 52% yield with excellent enantioselectivity (Table 2, entry 1). Although no improvement of the yield was observed using 2 mol% catalyst (entry 2), a slight increase of the yield was obtained using 2 equivalents of **4b** (entry 3). In our previous report, Rh/Ag bimetallic NP catalysts showed higher activity than Rh NP catalysts because of



Table 2 Optimization of the reaction with  $\alpha,\beta$ -unsaturated acyclic ketone

Entry	Catalyst (2)	Yield (%)	Ee <sup>a</sup> (%)
1	LIHBCB-Rh ( <b>2b</b> )	52	96
2 <sup>b</sup>		53	96
3 <sup>c</sup>		64	96
4	LIHBCB-Rh/Ag (1 : 1) ( <b>2d</b> )	55	95
5	LIHBCB-Rh/Ag (2 : 1) ( <b>2e</b> )	42	95
6	LIHBCB-Rh/Ag (1 : 2) ( <b>2f</b> )	68	96
7 <sup>c</sup>	LIHBCB-Rh/Ag (1 : 2) ( <b>2f</b> )	88	96

<sup>a</sup> Determined by HPLC analysis. <sup>b</sup> 2 mol% of **2b** was used. <sup>c</sup> 2 equiv. of **4b** were used.

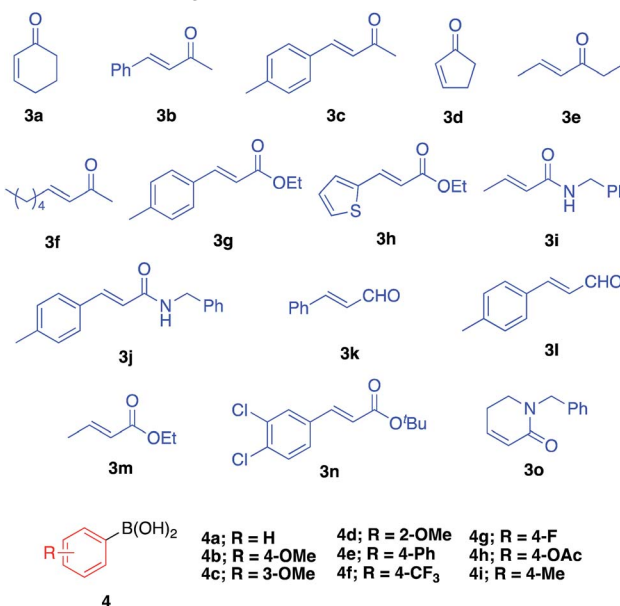
better dispersion of Rh NPs.<sup>18</sup> Considering this result, we prepared chiral diene-immobilized hybrid Rh–Ag bimetallic NP catalysts with different ratios of Rh and Ag; LIHBCB-Rh/Ag (1 : 1) (**2d**), LIHBCB-Rh/Ag (2 : 1) (**2e**), and LIHBCB-Rh/Ag (1 : 2) (**2f**). Among them, **2f** showed the highest reactivity while maintaining excellent enantioselectivity (entries 4, 5, and 6); when 2 equivalents of **4b** were used, high yield and excellent enantioselectivity were obtained (entry 7).

### Substrate scope for 1,4-addition of boronic acids to $\alpha,\beta$ -unsaturated carbonyl compounds

We then surveyed the substrate scope of this asymmetric 1,4-addition reaction (Table 3). First, the reaction of **3a** with a range of arylboronic acids including various substituents was examined. With phenylboronic acid (**4a**), excellent yield and enantioselectivity were obtained using Rh **2b** (entry 1). Rh/Ag bimetallic catalyst **2f** also worked as well as catalyst **2b** (entry 2). When *para*-, *meta*-, and *ortho*-methoxyphenylboronic acids **4b–d** were used, excellent results were obtained in all cases (entries 3–5). With a phenyl group at the *para*-position of phenylboronic acid (**4e**), satisfactory results were obtained (entry 6). Next, the reactions with arylboronic acids having electron-withdrawing groups such as trifluoromethyl (**4f**), fluoro (**4g**), and acetoxy groups (**4h**) were examined. It was found that these substrates were less active than arylboronic acids having electron-donating groups; however, high yields with excellent enantioselectivities were obtained by using a slight excess of the arylboronic acids (entries 7–9). For further less-active substrates such as 2-cyclopentenone (**3d**) and acyclic  $\alpha,\beta$ -unsaturated ketones (**3b**, **3c**, **3e** and **3f**), high yields with excellent enantioselectivities were observed by using Rh/Ag **2f** (entries 10–14) instead of Rh **2b**. We then optimized less reactive unsaturated carbonyl compounds.<sup>29</sup> Rh/Ag **2f** also showed good activity toward  $\alpha,\beta$ -unsaturated esters **3g** and **3h**, although 1 equivalent of  $K_2CO_3$  was needed as an additive (entries 15–18). Interestingly, high

Table 3 Substrate scope of the reaction with  $\alpha,\beta$ -unsaturated carbonyl compounds

Entry	3	4	Conditions <sup>a</sup>	Yield (%)	Ee <sup>b</sup> (%)
1	<b>3a</b>	<b>4a</b>	<b>A</b>	98	98
2	<b>3a</b>	<b>4a</b>	<b>B</b>	95	98
3	<b>3a</b>	<b>4b</b>	<b>A</b>	94	97
4	<b>3a</b>	<b>4c</b>	<b>A</b>	96	97
5	<b>3a</b>	<b>4d</b>	<b>A</b>	95	97
6	<b>3a</b>	<b>4e</b>	<b>A</b>	89	98
7	<b>3a</b>	<b>4f</b>	<b>C</b>	91	98
8	<b>3a</b>	<b>4g</b>	<b>C</b>	89	98
9	<b>3a</b>	<b>4h</b>	<b>C</b>	92	98
10	<b>3b</b>	<b>4b</b>	<b>B</b>	88	96
11	<b>3c</b>	<b>4a</b>	<b>B</b>	93	91
12	<b>3d</b>	<b>4a</b>	<b>B</b>	94	97
13	<b>3e</b>	<b>4a</b>	<b>B</b>	90	96
14	<b>3f</b>	<b>4a</b>	<b>B</b>	87	97
15 <sup>c</sup>	<b>3g</b>	<b>4a</b>	<b>B</b>	Quant.	97
16 <sup>c</sup>	<b>3g</b>	<b>4c</b>	<b>B</b>	91	98
17 <sup>c</sup>	<b>3h</b>	<b>4c</b>	<b>B</b>	63	94
18 <sup>c,d</sup>	<b>3h</b>	<b>4c</b>	<b>B</b>	73	94
19 <sup>e</sup>	<b>3i</b>	<b>4a</b>	<b>B</b>	90	98
20 <sup>e</sup>	<b>3j</b>	<b>4a</b>	<b>B</b>	90	98
21	<b>3k</b>	<b>4b</b>	<b>D</b>	64	87
22	<b>3k</b>	<b>4g</b>	<b>D</b>	70	93
23	<b>3l</b>	<b>4a</b>	<b>D</b>	71	93
24	<b>3m</b>	<b>4i</b>	<b>B</b>	87	94
25 <sup>f</sup>	<b>3n</b>	<b>4a</b>	<b>B</b>	85	93
26	<b>3o</b>	<b>4g</b>	<b>B</b>	74	99



<sup>a</sup> Conditions **A**: LIHBCB-Rh (**2b**, 1 mol% Rh), ArB(OH)<sub>2</sub> (1.5 equiv.); **B**: LIHBCB-Rh/Ag (**2f**, 1 mol% Rh), ArB(OH)<sub>2</sub> (2 equiv.); **C**: LIHBCB-Rh (**2b**, 1 mol% Rh), ArB(OH)<sub>2</sub> (2 equiv.); **D**: LIHBCB-Rh/Ag (**2d**, 1 mol% Rh), ArB(OH)<sub>2</sub> (2 equiv.). <sup>b</sup> Determined by HPLC analysis. <sup>c</sup> 1 equiv. of  $K_2CO_3$  was used. <sup>d</sup> 3 mol% of **2f** was used. <sup>e</sup> 2 mol% of **2f** was used. <sup>f</sup> 3 equiv. of **4a** were used.



yield and excellent enantioselectivity were obtained with  $\alpha,\beta$ -unsaturated amides **3i** and **3j** without any additive (entries 19 and 20). We also tried cinnamaldehyde (**3k**) and 4-methyl substituted cinnamaldehyde (**3l**) as substrate, and it showed good yields and enantioselectivities with various arylboronic acid (entries 21–23). To confirm further utility of this catalyst, the preparation of natural product and drug precursors was examined. Ester **5mi** can be used as a precursor of various anticancer and antimicrobial materials,<sup>30,31</sup> and it was successfully prepared by asymmetric 1,4-addition of 4-methoxyphenylboronic acid (**4i**) to  $\alpha,\beta$ -unsaturated ester **3m** in 87% yield with 94% enantioselectivity (entry 24). Ester **5na**, a precursor of (–)-indatraline, was also obtained in good yield with high enantioselectivity (entry 25).<sup>32</sup> Amide substrate **3o** reacted with 4-fluorophenylboronic acid (**4g**) to afford **5og**, a precursor of (–)-paroxetine, in good yield with excellent enantioselectivity (entry 26).<sup>21,33</sup>

### Recovery and reuse of the catalyst

We next conducted catalyst recovery and reuse experiments. The heterogeneous catalyst could be recovered by simple filtration, and the recovered catalyst was used for the next run after washing with toluene/H<sub>2</sub>O and drying *in vacuo*. Both monometallic Rh catalyst (**2b**, for **5aa**) and Rh/Ag bimetallic catalyst (**2f**, for **5ia**) were tested, and could be recovered and reused 3–4 times without significant decrease in activity (Table 4).

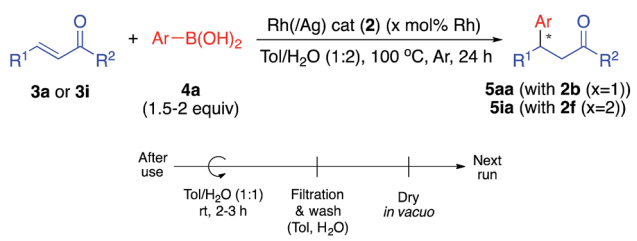
In the 4th or 5th run, the yields decreased, but the enantioselectivities remained high. We carefully analyzed the reused catalysts; however, no significant aggregation or damage was observed by STEM analysis (see ESI, Fig. S6 and S7†). We consider that the decreased yields might arise from adsorbed contaminants generated during the reactions (byproducts or co-products). We check the reaction profile in the recovery/reuse experiments until 3rd run, and gradually decreased reaction

rates in the successive runs were observed, while yields were reached >90% after 24 h reaction time in each run (see ESI, Fig. S18†). It was probably derived from decrease in available reaction sites due to remained contaminants. Washing the catalyst in basic media (0.5–1 M NaOH (aq.)) or acidic media (0.5 M HCl (aq.)) was conducted for removal; however, no further improvement was obtained. Another possibility for the reduced yield is decomposition of the diene ligand during the reaction. To test this, we conducted a number of control experiments (Table 5).

Catalyst **2f** was stirred at 100 °C in the presence of the solvent for 96 h, which was the same as the total reaction time until the 4th run in recovery/reuse experiments, and then both substrates **3i** and **4a** were added. In this case, excellent yield and ee of the desired product (**5ia**) were obtained, and the possibility of ligand degradation through thermal decomposition could be excluded (Table 5, entry 1). To examine the effect of substrates in the reaction medium, catalyst **2f** was heated at 100 °C in the presence of **3i** or **4a** for 96 h, followed by the addition of other substrates. In the case of heating at 100 °C with amide **3i**, an excellent result was still obtained (entry 2). We also conducted the heating treatment with phenylboronic acid **4a**; in this case, the desired product (**5ia**) was not obtained, probably because of the hydrolysis of **4a** to benzene during the first 96 h (entry 3). On the other hand, when a new portion of **4a** was added after the same heating treatment with **3i**, a slight decrease in yield was obtained; however, the desired product **5ia** was obtained with high enantioselectivity. It may be possible that decomposed (or co-products of) arylboronic acid generated in the asymmetric 1,4-addition reaction somehow deactivated the catalysts in the recovery and reuse experiments.

We also analyzed the amount of adsorbed hydrogen gas (H<sub>2</sub>) in HBCB-Rh/Ag (1 : 2) (**6**), prepared without a ligand component in the polymer, fresh **2f**, and recovered **2f** after the 5th run (Table 6). Whereas catalyst **6** adsorbed 0.2413 cm<sup>3</sup> g<sup>-1</sup> H<sub>2</sub>, fresh **2f** adsorbed only 0.0783 cm<sup>3</sup> g<sup>-1</sup> H<sub>2</sub>, even though the size of NPs is smaller than **6** (13 nm (**6**) vs. 4 nm (**2f**)). This may be explained by considering that certain amounts of ligand coordinate to the surface of metal NPs competing with H<sub>2</sub> in **2f**. Interestingly, in the case of recovered **2f** after the 5th run, the amount of

Table 4 Recovery and reuse of the catalyst



		Result				
		1st	2nd	3rd	4th	5th
<b>5aa</b>	Yield <sup>a</sup> (%)	90	93	86	76	—
	Ee <sup>b</sup> (%)	98	98	98	98	—
<b>5ia</b>	Yield <sup>a</sup> (%)	84	90	90	87	32
	Ee <sup>b</sup> (%)	98	98	98	98	98

<sup>a</sup> Isolated yield. <sup>b</sup> Determined by HPLC analysis.

Table 5 Control experiment

Entry	Set-up	Addition after 96 h	Yield <sup>a</sup> (%)	Ee <sup>b</sup> (%)
1	<b>2f</b>	<b>3i</b> , <b>4a</b>	Quant. (92)	98
2	<b>2f</b> , <b>3i</b>	<b>4a</b>	Quant. (83)	98
3	<b>2f</b> , <b>4a</b>	<b>3h</b>	No desired product	—
4	<b>2f</b> , <b>4a</b>	<b>3i</b> , <b>4a</b>	72 (74)	97

<sup>a</sup> Determined by GC analysis. The number in parenthesis is isolated yield. <sup>b</sup> Determined by HPLC analysis.



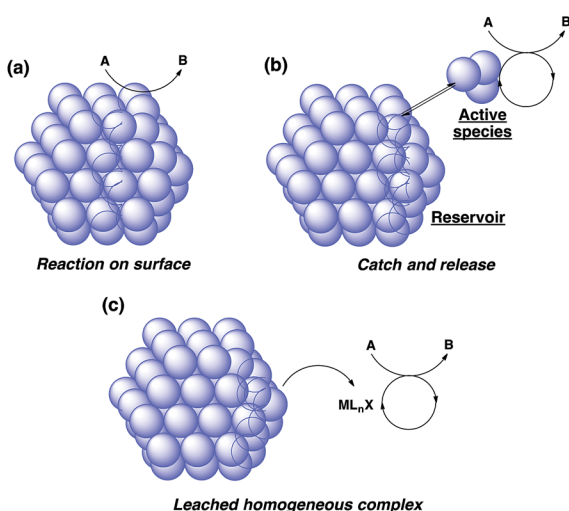
Table 6 Hydrogen adsorption analysis

Catalyst	Amount of adsorbed hydrogen gas (cm <sup>3</sup> g <sup>-1</sup> )
HBCB cat. (6)	0.2413
Fresh 2f	0.0783
Deactivated 2f (after 5th run)	0.0206
Immobilized ligand + CB	0

adsorbed H<sub>2</sub> decreased further. As a control, we also examined the H<sub>2</sub> adsorption of an immobilized ligand (containing carbon black, without metal NPs); no adsorption of H<sub>2</sub> was observed, so H<sub>2</sub> would be adsorbed on metal NPs. Although these results are indirect, they suggested that contaminants not removed by washing gradually coordinated to the surface of the metal NPs and accumulated during the recovery and reuse of the catalyst.

### Mechanistic insight

There are broadly three categories of possible catalytically active species in NP catalyst systems, as shown in Scheme 3:<sup>34,35</sup> (a) a reaction occurs on the surface of metal NPs coordinated with immobilized ligands; (b) a detached metal complexes or a small metal clusters coordinated with immobilized ligands catalyzes the reaction as an active species, which returns back to NPs after the reaction, and NPs act as a reservoir for these small clusters; and (c) a leached homogeneous metal complex from nanoparticles works as an active species. Hot filtration tests were conducted to determine whether the reaction proceeded through mechanism (c) by leached homogeneous complex (Fig. 1). The reaction profile was monitored by using a filtrate obtained in the middle of a reaction. We conducted this test for both cyclic (3a) and acyclic (3e) ketone substrates, and no increase in yield was observed after removal of the catalyst in either of the experiments; therefore, it was confirmed that this reaction was catalyzed in a heterogeneous manner. ICP analysis



Scheme 3 Possible mechanisms of heterogeneous metal nanoparticle catalysts.

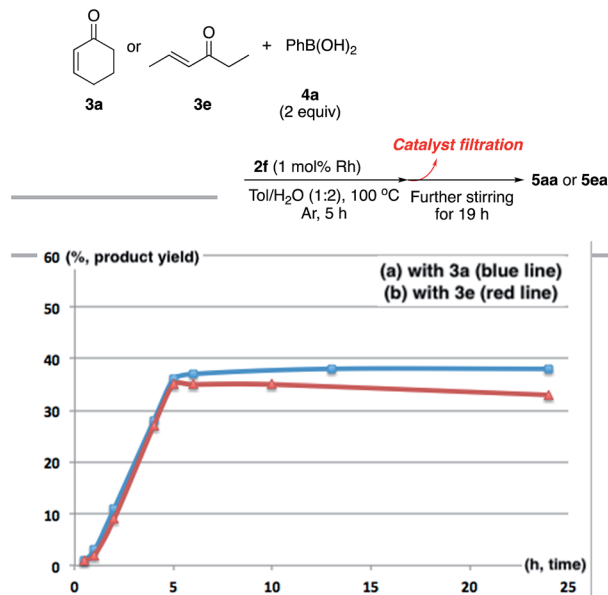
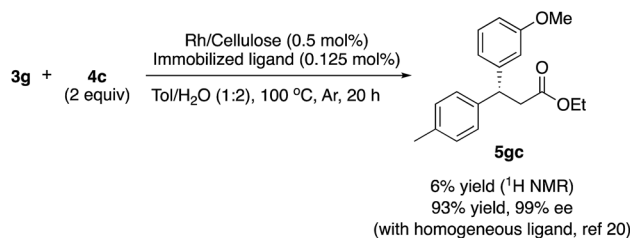


Fig. 1 Hot filtration test.

of the reaction medium revealed that trace amounts of Rh and Ag were detected after the reaction of 3e (0.111% Rh, 0.035% Ag (Rh detection limit: 0.045%, Ag detection limit: 0.007%)). Based on the results of the hot filtration tests, we conclude that leached Rh or Ag did not catalyze the reactions, and that metal species in the catalysts that were not fully immobilized/fixated were washed out during the reactions.

To confirm the importance of physical proximity between metal NPs and chiral diene ligands, we prepared an immobilized ligand on carbon black (see ESI, Scheme S3<sup>†</sup>), and the reaction was conducted together with a Rh/cellulose catalyst, which was an easily prepared and highly active catalyst (Scheme 4).<sup>20</sup> As a result, only a trace amount of the product (5gc) was obtained. It confirms that this reaction proceeds by ligand acceleration and the reaction hardly occurs on the non-coordinated metal NPs. Also, physical proximity is an important factor required to make highly active species. To gather further information on the reaction mechanism and the active species, we conducted XPS analysis of several states of catalyst 2f: (A) fresh, (B) recovered during the reaction (1 h), (C) after 1st run, and (D) after 5th run. HBCB-Rh/Ag (1 : 2) catalyst (6) was also analyzed: (E) fresh and (F) after the reaction using



Scheme 4 Reaction with the mixture of Rh NPs and chiral ligand on different supports.



Table 7 Binding energy of Rh<sup>a</sup>

State	2f			
	(A)	(B)	(C)	(D)
Rh (eV) (3p <sub>3/2</sub> )	497.0	497.4	496.9	496.9

<sup>a</sup> For **2f**: (A) fresh, (B) recovered during the reaction (1 h), (C) after 1st run, (D) after 5th run; for **6**: (E) fresh, (F) after the reaction using 2.5 mol% of externally added amide-substituted chiral diene.

State	6		Rh(OH)-diene (7)
	(E)	(F)	
Rh (eV) (3p <sub>3/2</sub> )	497.2	498.2	497.3

2.5 mol% of externally added amide-substituted chiral diene (Table 7).

In all data, Rh binding energy (BE) showed more distinct differences compared with that of Ag (see ESI, Table S1†), and based on these results, we concluded the following. First, lower Rh BE was obtained in fresh **2f** (A) compared with that of **6** (E), and we supposed that this difference in Rh BE came from coordination of the ligand to Rh NPs. Second, in the case of **2f**, almost the same Rh BE was observed in the fresh catalyst (A) and the recovered catalysts after the reactions (C and D), while Rh BE of **6** was changed after the reaction using an externally added chiral diene (E and F). Moreover, a significant amount of metal leaching was observed in the reaction with **6** and the externally added chiral diene ligand (see ESI, Scheme S5†). Although it is unclear whether this change in Rh BE of **6** is due to metal leaching or changed states of Rh NPs, it was assumed that more stable Rh species was generated and maintained in the presence of the immobilized chiral diene ligand. Lastly, a change in Rh BE was observed when the catalyst was recovered during the reaction (B). For comparison, we prepared Rh(OH)-diene complex (7) adsorbed on carbon (see ESI, Scheme S4†), and confirmed that the Rh BE of 7 was similar to that in (B). We consider that the active species of this reaction might be a species which has a similar electronic state to hydroxyl-rhodium species; however, it is not defined whether mono-metallic complex or oligomeric nanoclusters formed at this stage. Based on the experiments described above, it is feasible that detached Rh species from NPs coordinate to the chiral diene ligand immobilized on the polymer support, may be active for this asymmetric 1,4-addition reaction. Since the XPS analysis indicted the same Rh BE after use, the active species presumably returns to the NPs after the reaction. From these results, catch-and-release mechanism (b) may be more likely than reaction-on-surface mechanism (a), but we cannot exclude the possibility of mechanism (a).<sup>36</sup>

### Asymmetric arylation of nitroolefin and imine compounds

We next examined the ability of the current heterogeneous chiral Rh/Ag bimetallic NP catalyst (**2d**) to mediate other asymmetric reactions; to this end, we examined the asymmetric

Table 8 Asymmetric arylation of nitroolefin and imine compounds<sup>a</sup>

Entry	8	4	Yield (%)	Ee <sup>b</sup> (%)
1	<b>8a</b>	<b>4g</b>	84	88
2	<b>8a</b>	<b>4j</b>	Quant.	92
3 <sup>a</sup>	<b>8a</b>	<b>4k</b>	69	98
4	<b>8b</b>	<b>4c</b>	93	88
5	<b>8c</b>	<b>4c</b>	98	86
6	<b>8d</b>	<b>4c</b>	63	82
7	<b>9a</b>	<b>4a</b>	50	98
8	<b>9a</b>	<b>4g</b>	53	99
9	<b>9b</b>	<b>4a</b>	61	98
10	<b>9c</b>	<b>4a</b>	51	97
11	<b>9d</b>	<b>4a</b>	59	98
12	<b>9e</b>	<b>4a</b>	70	97

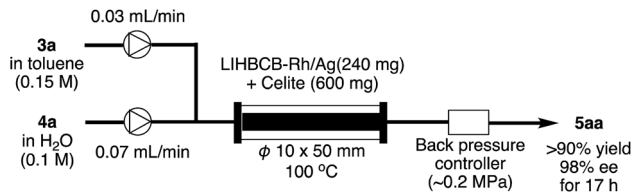
**4a**: R = H  
**4b**: R = 4-OMe  
**4c**: R = 3-OMe  
**4g**: R = 4-F  
**4j**: R = 4-Cl  
**4k**: R = 2-Me

<sup>a</sup> Solvent ratio: Tol/H<sub>2</sub>O (5 : 1) for nitroolefin (entries 1–6), Tol/H<sub>2</sub>O (8 : 1) for imine (entries 7–12). <sup>b</sup> Determined by HPLC analysis. <sup>c</sup> 2 mol% **2d**, 3 equiv. of **4k** were used.

arylation of nitroolefins and the asymmetric arylation of imines (Table 8).

In the reaction of nitrostyrene (**8a**) with phenylboronic acid bearing electron-withdrawing groups (**4g** and **4j**), the desired 1,4-addition products were obtained in high-to-excellent yields with high enantioselectivities (Table 8, entries 1 and 2). With 2-methylphenylboronic acid, which has a sterically-hindered structure, a good yield and excellent enantioselectivity were obtained, although increased amounts of both catalyst and boronic acid were needed (entry 3). Other nitroolefins that contain an electron-donating group or a heteroaromatic ring were also reacted, and the desired products were obtained in excellent yields with high enantioselectivities (entries 4 and 5). Notably, even the aliphatic nitroolefin **8d** could form the desired 1,4-addition product in good yield with high enantioselectivity (entry 6). On the other hand, in the reactions of imine substrates, it was found that yields were a little lower because of the relatively rapid hydrolysis of imines; however, excellent enantioselectivities were obtained. 4-Methyl-substituted tosyl imine (**9a**) reacted with phenylboronic acid (**4a**) and 4-fluorophenylboronic acid (**4g**) to afford the desired 1,2-addition





Scheme 5 Application to flow system.

products in 50% yield with 98% ee (entry 7) and in 53% yield with 99% ee (entry 8), respectively. In the reaction of 4-methoxy-substituted tosyl imine (**9b**), the yield was slightly increased and the excellent enantioselectivity was maintained (entry 9). The desired amine products were also obtained with good yields and excellent enantioselectivities from 2- or 1-naphthyl (**9c** or **9d**) and 2-thienyl substituted imine (**9e**) substrates (entries 10–12). It is noted that chiral Rh/Ag bimetallic NP catalyst **2d** worked well for both asymmetric arylation of nitroolefins and asymmetric arylation of imines. Given that nitro groups can be readily reduced to the corresponding amines, two types of optically active amine derivatives can be prepared using these methods.

### Application to flow system

Finally, this catalyst system was applied to a continuous-flow system (Scheme 5). Flow reactions have advantages over batch reactions in terms of environmental friendliness, efficiency, and safety.<sup>37</sup> Among several flow reactions, those using heterogeneous catalysts are very efficient because a product can be obtained simply by passing starting materials through a column filled with the catalyst and, at the same time, the product and the catalyst can be separated.<sup>38</sup> In spite of the potential utility of this system, applicable heterogeneous catalysts, particularly heterogeneous chiral catalysts, are limited.

Rh/Ag **2f** was mixed with Celite and the mixture was packed in a column.  $\alpha,\beta$ -Unsaturated ketone **3a** in toluene and an aqueous solution of phenylboronic acid **4a** were flowed into the column using separate pumps. To prevent evaporation of the solvents in the column, back-pressure was maintained. As a result, the desired product **5aa** was obtained in >90% yield with 98% ee for 17 h (productivity (STY): 348 g dL<sup>-1</sup>).

## Conclusions

We have developed heterogeneous chiral Rh and Rh/Ag bimetallic NP catalysts immobilized on a chiral diene-containing polymer. The catalysts showed high-to-excellent yields and enantioselectivities in asymmetric 1,4-addition reactions of arylboronic acids with  $\alpha,\beta$ -unsaturated carbonyl compounds such as ketones, esters, and amides. The catalysts could be recovered and reused without external addition of other portions of the chiral diene ligand while maintaining their activities. We also presented a reaction mechanism and discussed the nature of the active species involved in the heterogeneous asymmetric catalysis. Furthermore, the catalyst could be applied to other asymmetric reactions, asymmetric arylation

of nitroolefins and imines, and a continuous-flow system. To our knowledge, this is the first example of a catalyst in which a chiral ligand is immobilized together with metal NPs on the same support that shows both high yields and enantioselectivities in asymmetric C–C bond-formation reactions.

## Conflicts of interest

There are no conflicts to declare.

## Acknowledgements

The authors are grateful to Mr Kohei Nishino for his contribution to the initial stage of this work. This work was supported in part by a Grant-in-Aid for Scientific Research from JSPS, The University of Tokyo, and MEXT (Japan), JST. We also thank Mr Noriaki Kuramitsu (The University of Tokyo) and Mr Tei Maki (JEOL, The University of Tokyo) for STEM and EDX analysis.

## Notes and references

- 1 K. Ding and Y. Uozumi, *Handbook of Asymmetric Heterogeneous Catalysis*, Wiley-VCH, Weinheim, 2008.
- 2 M. Heitbaum, F. Glorius and I. Escher, *Angew. Chem., Int. Ed.*, 2006, **45**, 4732–4762.
- 3 B. Pugin and H. U. Blaser, *Top. Catal.*, 2010, **53**, 953–962.
- 4 T. Sawano, P. F. Ji, A. R. McIsaac, Z. K. Lin, C. W. Abney and W. B. Lin, *Chem. Sci.*, 2015, **6**, 7163–7168.
- 5 S. Hübner, J. G. de Vries and V. Farina, *Adv. Synth. Catal.*, 2016, **358**, 3–25.
- 6 N. E. Leadbeater and M. Marco, *Chem. Rev.*, 2002, **102**, 3217–3274.
- 7 G. Schmid, *Chem. Rev.*, 1992, **92**, 1709–1727.
- 8 D. Astruc, *Nanoparticles and Catalysis*, Wiley-VCH Verlag GmbH & Co.: KGaA, 2008.
- 9 H. Cong and J. A. Porco, *ACS Catal.*, 2012, **2**, 65–70.
- 10 Y. Orito, S. Imai, S. Niwa and G. H. Nguyen, *J. Synth. Org. Chem., Jpn.*, 1979, **37**, 173–174.
- 11 T. Yasukawa, H. Miyamura and S. Kobayashi, *Chem. Soc. Rev.*, 2014, **43**, 1450–1461.
- 12 K. V. S. Ranganath, A. H. Schafer and F. Glorius, *ChemCatChem*, 2011, **3**, 1889–1891.
- 13 E. Gross, J. H. Liu, S. Alayoglu, M. A. Marcus, S. C. Fakra, F. D. Toste and G. A. Somorjai, *J. Am. Chem. Soc.*, 2013, **135**, 3881–3886.
- 14 In 2016, Hua *et al.* reported asymmetric oxidation reactions using bimetallic nanoclusters supported on chiral-substituted poly-N-vinylpyrrolidinones with good to excellent enantioselectivities. B. Hao, M. J. Gunaratna, M. Zhang, S. Weerasekara, S. N. Seiwald, V. T. Nguyen, A. Meier and D. H. Hua, *J. Am. Chem. Soc.*, 2016, **138**, 16839–16848.
- 15 T. Hayashi and K. Yamasaki, *Chem. Rev.*, 2003, **103**, 2829–2844.
- 16 P. Tian, H. Q. Dong and G. Q. Lin, *ACS Catal.*, 2012, **2**, 95–119.



- 17 K. Okamoto, T. Hayashi and V. H. Rawal, *Org. Lett.*, 2008, **10**, 4387–4389.
- 18 T. Yasukawa, H. Miyamura and S. Kobayashi, *J. Am. Chem. Soc.*, 2012, **134**, 16963–16966.
- 19 T. Yasukawa, A. Suzuki, H. Miyamura, K. Nishino and S. Kobayashi, *J. Am. Chem. Soc.*, 2015, **137**, 6616–6623.
- 20 T. Yasukawa, H. Miyamura and S. Kobayashi, *Chem. Sci.*, 2015, **6**, 6224–6229.
- 21 T. Yasukawa, Y. Saito, H. Miyamura and S. Kobayashi, *Angew. Chem., Int. Ed.*, 2016, **55**, 8058–8061.
- 22 T. Yasukawa, T. Kuremoto, H. Miyamura and S. Kobayashi, *Org. Lett.*, 2016, **18**, 2716–2718.
- 23 H. Miyamura, K. Nishino, T. Yasukawa and S. Kobayashi, *Chem. Sci.*, 2017, **8**, 8362–8372.
- 24 T. Matsumoto, M. Ueno, N. Wang and S. Kobayashi, *Chem.–Asian J.*, 2008, **3**, 239–243.
- 25 H. Miyamura, K. Maehata and S. Kobayashi, *Chem. Commun.*, 2010, **46**, 8052–8054.
- 26 W.-J. Yoo, H. Miyamura and S. Kobayashi, *J. Am. Chem. Soc.*, 2011, **133**, 3095–3101.
- 27 H. Miyamura, A. Sonoyama, D. Hyrapetyan and S. Kobayashi, *Angew. Chem., Int. Ed.*, 2015, **54**, 10559–10563.
- 28 S. Kobayashi and H. Miyamura, *Aldrichimica Acta*, 2013, **46**, 3–19.
- 29 We monitored profiles of the reactions with  $\alpha,\beta$ -unsaturated ketone, ester, amide and aldehyde substrates under the same conditions. As a result, slower reaction rate (ester, aldehyde) or lower final yield (amide) was observed, and we optimized reaction conditions for each substrates (see ESI, Table S2 and Fig. S17<sup>†</sup>).
- 30 S. Afewerki, P. Breistein, K. Pirttila, L. Deiana, P. Dziedzic, I. Ibrahim and A. Cordova, *Chem.–Eur. J.*, 2011, **17**, 8784–8788.
- 31 J. Q. Li, X. Quan and P. G. Andersson, *Chem.–Eur. J.*, 2012, **18**, 10609–10616.
- 32 W. T. Wei, J. Y. Yeh, T. S. Kuo and H. L. Wu, *Chem.–Eur. J.*, 2011, **17**, 11405–11409.
- 33 M. S. Yu, I. Lantos, Z. Q. Peng, J. Yu and T. Cacchio, *Tetrahedron Lett.*, 2000, **41**, 5647–5651.
- 34 T. Yasukawa, H. Miyamura and S. Kobayashi, *ACS Catal.*, 2016, **6**, 7979–7988.
- 35 V. P. Ananikov and I. P. Beletskaya, *Organometallics*, 2012, **31**, 1595–1604.
- 36 Preparation of small nanoclusters on same polymer support was tried by lowering the target loading, but still colonies of nanoparticles were formed (see ESI, Fig. S11<sup>†</sup>).
- 37 S. Kobayashi, *Chem.–Asian J.*, 2016, **11**, 425–436.
- 38 T. Tsubogo, H. Oyamada and S. Kobayashi, *Nature*, 2015, **520**, 329–332.

