

Showcasing research from Professor Xiaoyun Ding's laboratory, Mechanical Engineering and Biomedical Engineering, University of Colorado Boulder, United States.

Surface acoustic wave hemolysis assay for evaluating stored red blood cells

We developed a Surface Acoustic Wave Hemolysis Assay (SAW-HA) that utilizes acoustic effects and acoustic-induced heating to evaluate stored red blood cell quality. Combined with omics technologies, SAW-HA distinguished donor-specific storage behaviors, identifying membrane instability associated with elevated BMI, deficient tryptophan metabolism, and disrupted redox homeostasis.

Image reproduced by permission of Angelo D'Alessandro, Xiaoyun Ding *et al.*, from *Lab Chip*, 2026, **26**, 40.

As featured in:



See Angelo D'Alessandro, Xiaoyun Ding *et al.*, *Lab Chip*, 2026, **26**, 40.



Cite this: *Lab Chip*, 2026, 26, 40

Surface acoustic wave hemolysis assay for evaluating stored red blood cells

Meiou Song,^{iD}†^a Colin C. Anderson,^{iD}†^b Nakul Sridhar,^{iD}^a Julie A. Reisz,^{iD}^b Leyla Akh,^{iD}^c Yu Gao,^{iD}^a Angelo D'Alessandro,^{iD}*^{bd} and Xiaoyun Ding,^{iD}*^{acef}

Blood transfusion remains a cornerstone of modern medicine, saving countless lives daily. Yet the quality of transfused blood varies dramatically among donors—a critical factor often overlooked in clinical practice. Rapid, benchtop, and cost-effective methods for evaluating stored red blood cells (RBCs) at the site of transfusion are lacking, with concerns persisting about the association between metabolic signatures of stored RBC quality and transfusion outcomes. Recent studies utilizing metabolomics approaches to evaluate stored erythrocytes find that donor biology (e.g., genetics, age, lifestyle factors) underlies the heterogeneity associated with blood storage and transfusion. The appreciation of donor-intrinsic factors provides opportunities for precision transfusion medicine approaches for the evaluation of storage quality and prediction of transfusion efficacy. Here we propose a new platform, the surface acoustic wave hemolysis assay (SAW-HA), for on-site evaluation of stored RBCs utilizing SAW hemolysis temperature (SAWHT) as a marker for RBC quality. We report SAWHT as a mechanism-dependent reproducible methodology for evaluating stored human RBCs up to 42 days. Our results define unique signatures for SAW hemolysis and metabolic profiles in RBCs from two of the six donors in which high body mass index (BMI) and RBC triglycerides associated with increased susceptibility to hemolysis. Metabolic age of the stored RBCs – a recently appreciated predictor of post-transfusion efficacy – reveal that RBCs from the two low SAWHT units were characterized by disrupted redox control, deficient tryptophan metabolism, and high BMI. Together, these findings indicate the potential of the SAW-HA as a point-of-care analysis for transfusion medicine.

Received 30th June 2025,
Accepted 20th October 2025

DOI: 10.1039/d5lc00652j

rsc.li/loc

Introduction

Blood transfusion is a life-saving medical intervention for millions of recipients worldwide. Packed red blood cells (pRBCs) – the most widely transfused blood product – are stored for up to 42 days under refrigeration in additive solutions. However, stored RBCs undergo progressive metabolic and structural changes, collectively termed storage lesions.¹ These lesions, driven by oxidative stress and metabolic alterations,

ultimately result in membrane damage, reduced deformability,² and hemolysis, along with an impaired capacity to deliver oxygen,³ contributing to inflammatory sequelae and vascular dysfunction.⁴ Notably, RBC deterioration does not occur uniformly; donor-specific factors such as sex, age, body mass index (BMI), genetic background, and metabolism significantly influence how RBCs respond to storage.^{5–9} Current transfusion practices rely on the chronological storage age of RBCs, a metric that fails to capture metabolic age¹⁰—a function of RBC biophysical and biochemical integrity—which varies widely among donors. Without a benchtop assay that is easy for medical personnel to learn, use, and interpret quickly, transfusions may be non-optimized, potentially leading to poor outcomes in vulnerable patients.

Recent advances in -omics technologies, especially metabolomics, have provided new insights into RBC storage quality.^{7,11–13} These approaches have identified potential biomarkers for transfusion effectiveness by characterizing metabolic changes in stored RBCs. For instance, biomarkers of oxidative stress (glutathione (GSH) and its synthetic intermediates) correlate strongly with oxidative hemolysis within stored RBCs.^{14–16} Hypoxanthine, a marker of oxidant

^a Department of Mechanical Engineering, University of Colorado, Boulder, CO, 80309, USA. E-mail: Xiaoyun.Ding@colorado.edu

^b Department of Biochemistry and Molecular Genetics, University of Colorado Anschutz Medical Campus, Aurora, CO, 80045, USA. E-mail: Angelo.Dalessandro@cuanschutz.edu

^c Biomedical Engineering Program, University of Colorado, Boulder, CO, 80309, USA

^d Omix Technologies Inc, Aurora, CO, 80045, USA

^e Material Science and Engineering Program, University of Colorado, Boulder, CO, 80309, USA

^f BioFrontiers Institute, University of Colorado, Boulder, CO 80309, USA

† These authors contributed equally.



stress, accumulates nonlinearly through the shelf-life of stored RBCs and is linked to adverse transfusion outcomes as determined by chromium-51-labeled (^{51}Cr) post-transfusion recovery (PTR) studies in autologous donors (gold standard to determine RBC storage quality per European Council and US Food and Drug Administration guidelines).¹¹ Energy currencies such as ATP and NAD are also reduced during the storage period, the latter as a result of the activity of enzymes such as ADP ribose hydrolases (e.g., CD38).¹⁷ Accumulation of lipid peroxidation products and depletion of L-carnitine pools to repair such damage *via* the Lands cycle are also negative predictors of post-transfusion efficacy in mouse models and humans.^{13,18}

Current blood bank quality control relies on hemolysis testing of only ~1% of monthly production *via* visual assessment and spectrophotometric methods.¹⁹ Between assessment and transfusion, units may age in the refrigerator without individual evaluation, while storage lesions progress unpredictably due to donor-specific factor. This single-parameter approach inadequately correlates with post-transfusion recovery and effectiveness.^{20,21} While the ^{51}Cr -labeled PTR method is the gold standard for assessing stored blood quality and measuring transfusion outcomes, it remains prohibitively expensive due to radioactive handling requirements, specialized infrastructure, and costly disposal, limiting their clinical utility.²² Emerging approaches include ultra-high throughput metabolomics, which has identified predictive biomarkers but has so far remained confined to research settings due to sophistication and cost. Functional assessment methods also show promise, including RBC morphology evaluation using scanning electron microscopy (SEM)²³ and differential interference contrast (DIC) microscopy,²⁴ and more recently, high-throughput imaging flow cytometry for single-cell classification.^{2,25,26} Emerging photoacoustic microscopy²⁷ and Raman spectroscopy²⁸ techniques assess morphological changes of blood cells with potential for non-invasive clinical applications through blood storage bags or human skin. RBC deformability has also been recognized as a sensitive indicator of RBC functionality. Microsphiltration assays have recently been used to show that the sub-populations of RBCs that accumulate the bulk of the storage lesion are also the ones that are less deformable *in vitro*, and most likely to be sequestered in the spleen and erythrophagocytosed upon transfusion.^{2,26} Deformability is commonly measured using micropore filtration,²⁹ micropipette aspiration,³⁰ and ektacytometry (e.g., LORRCA).^{24,31} However, these approaches are inadequate for widespread clinical implementation due to high cost, specialized expertise requirements, and in some cases low throughput. Rapid, cost-effective, bedside technologies that correlate with metabolic profiles and predict transfusion efficacy are urgently needed to enable personalized transfusion medicine and improve clinical outcomes.⁵

To improve accessibility and throughput, lab-on-chip (LOC) technologies have emerged as promising tools for RBC quality assessment. These platforms offer portability, speed, and high-throughput capabilities. Many recent LOC techniques focus on miniaturizing traditional techniques,

including imaging systems integrated with machine learning to profile the morphological heterogeneity of blood products with the goal to implement precision transfusion medicine practices.^{32–35} Microfluidic adaptations of ektacytometry,³⁶ velocity-based deformability tracking,³⁷ ratchet-based cell sorting,³⁸ and capillary-mimicking deformability assays^{39,40} have further enabled evaluations of RBC rigidity. These approaches typically generate multidimensional datasets that require expert interpretation or complex operation workflows.

Here, we present the surface acoustic wave hemolysis assay (SAW-HA), an acoustic-integrated LOC platform that introduces a new biophysical biomarker for assessing RBC storage quality. The SAW-HA offers several practical advantages including minimal sample volume (<2 μL), rapid results (under two minutes), and straightforward quantitative output without complex data analysis. SAW technologies are known for their precise fluid control and high biocompatibility.^{41–45} Acoustic-induced heating has been used to precisely control on-chip temperatures,^{46,47} with demonstrated applications in protein-ligand interaction screening and in distinguishing healthy from sickle cell disease samples.⁴⁸ Building on these capabilities, our assay leverages both acoustic forces and acoustic-induced heating to induce hemolysis, using the SAW hemolysis temperature (SAWHT) as a biomarker for storage-induced changes in RBC quality. Measuring SAWHT at weekly intervals during storage enables a quantitative assessment of RBC quality across a spectrum—from optimal to severely degraded units—supporting decisions on transfusion suitability. When integrated with metabolomics data, this platform provides new insights into donor-specific differences in stored RBC aging and introduces a biomarker to support the advancement of personalized transfusion medicine.

Experimental methods

Device fabrication

The SAW device was fabricated using a 500 μm thick, 76.2 mm diameter, 128° Y-cut X-propagating lithium niobate (LiNbO_3) substrate. Two identical interdigital transducers (IDTs) were patterned on either side of a PDMS microchannel. The IDTs were fabricated using standard photolithography, starting with spin-coating a positive photoresist (S1813, Dow, USA) on the wafer. After UV exposure and development with MF319 developer (Dow, USA), layers of chrome/gold (Cr/Au, 10/100 nm) were deposited using e-beam evaporation, and excess photoresist was removed *via* lift-off (Remover PG, Kayaku, Japan). Each IDT comprised 30 electrode pairs with 50 μm spacing and a 10 mm aperture, yielding a frequency of ≈ 20 MHz for the propagating SAW.

For the polydimethylsiloxane (PDMS) channel, a negative SU8 mold was prepared by spin-coating SU8 2025 photoresist (MicroChem, USA) on a silicon wafer and patterning it with optical lithography. PDMS (Sylgard 184, Dow Corning, USA) was poured onto the mold, cured at 65 °C for 35 minutes, and punched with 0.75 mm diameter inlet/outlet holes and a 0.35 mm diameter temperature measurement hole. The PDMS



microchannel (80 μm height, 1 mm width, and 10 mm long) was bonded to the LiNbO_3 substrate using air plasma (PDC-001, Harrick Plasma, USA) and baked at 65 $^\circ\text{C}$ for 18 hours.

Samples and materials

Leukodepleted pRBCs in ACD-A/AS-3 were collected *via* apheresis at Vitalant Blood Donation Center (Denver, CO, USA) from six healthy donors (3 males, 3 females, aged 35–40) with appropriate informed consent and institutional review board (IRB) approval as specified in the Vitalant research materials agreement. All experiments were performed in accordance with the guidelines of the Declaration of Helsinki and the U.S. Federal Policy for the Protection of Human Subjects (Common Rule, 45 CFR 46), and experiments were approved by the ethics and biosafety committees at University of Colorado Boulder. Informed consents were obtained from human participants of this study. RBC units were stored at 1–6 $^\circ\text{C}$ and aseptically sampled weekly from day 1 to day 42. Each week, 100 μL of RBC units were frozen for future metabolic and lipidomic analysis. For weekly experiments (SAW-HA, EHC, and temperature-matched SAW-HA), RBC units were diluted 1 : 10 in PBS (v/v).

Device operation

For each set of experiments ($n = 3$), the PDMS channel was filled with PBS, with additional PBS droplets placed at the inlet and outlet ports. The device was then placed in a vacuum desiccator connected to a standard laboratory house vacuum line for 20 minutes for air bubble removal and temporary hydrophilicity treatment of the PDMS walls. Before each individual experiment, air bubbles were removed with ethanol, followed by manual injection of PBS into the inlet hole of the channel using a micropipette. Diluted RBC samples ($\sim 5 \mu\text{L}$) were injected, ensuring the channel remained bubble-free. After each experiment, the channel was cleaned with bleach followed by water washing in preparation for the next experiment. The SAW device was mounted on a custom 3D-printed holder and imaged using an inverted microscope (Eclipse Ti2, Nikon, Japan), a CMOS camera (Orca-Flash 4.0, Hamamatsu, Japan), and HCLImage Live software. Videos were recorded at 2.5 fps with a 10 \times objective in brightfield, capturing 2048 \times 2048-pixel images at 50% brightness and minimum aperture. The same channel area was imaged for consistency. Temperature inside the PDMS channel was monitored using a digital thermocouple (5TC-TT-K-36-36, Newark, USA) connected to a data acquisition (DAQ) system (cDAQ-9171 and NI TB-9212, NI, USA) and controlled *via* LabVIEW (NI, USA), with measurements taken for each image frame. All thermocouples were calibrated using the National Instruments data acquisition system by measuring ice-bath temperature (0 $^\circ\text{C}$ reference) to confirm measurement accuracy within ± 0.01 $^\circ\text{C}$.

An RF signal generator (33500B, Keysight, USA) and two power amplifiers (403LA, E&I, USA) were used to apply signals to the IDTs *via* bayonet coupling adapter (BCA) cables to printed circuit board (PCB) connectors (Fig. S1A). Three SAW devices were used throughout the experiments. For donor 1, all three

devices were used at each weekly time point to establish device-to-device reproducibility (three technical replicates per time point). After confirming device consistency, one device was selected for donors 2–6 experiments. Each SAW device was individually characterized by measuring SAW resonant frequency using a network analyzer (E5061B, Keysight, USA). Resonant frequencies typically ranged from 19.56 to 19.58 MHz. For SAW-HA, the SAW was operated at about 1.2 W for 2 minutes. For temperature-matched SAW-HA, the SAW power started at 0.8 W and manually increased by 0.2 W about every 10 s to align with the heating profile of electrical heating control (EHC). For EHC, a transparent heating plate (BT-I55D, Cell MicroControls, Norfold, VA, USA) with a microscope stage adapter (MSA-WELLP, Cell MicroControls, Norfold, VA, USA) were used (Fig. S1B). The temperature of the heating stage was controlled using a micro-temperature controller (mTC3-HT, Cell MicroControls, Norfolk, VA, USA) with the following parameters: band limit (Bnd) set to 100, final temperature set to 80 $^\circ\text{C}$, with all other parameters at factory defaults.

Metabolomics/lipidomics by UHPLC/MS

To extract metabolites, either cold 5 : 3 : 2 MeOH : ACN : H_2O (v/v/v) solution (metabolomics) or cold MeOH (lipidomics) was added in a 10 : 1 ratio to 5 μL of stored RBCs. Samples were vortexed vigorously for 30 minutes at 4 $^\circ\text{C}$, then centrifuged for 10 minutes at 18 213 rcf. Using 10 μL injection volumes, the supernatants were analyzed by ultra-high-pressure-liquid chromatography coupled to mass spectrometry (UHPLC-MS – Vanquish and Orbitrap Exploris 120, Thermo). Metabolites were resolved across a 1.7 μm , 2.1 \times 150 mm Kinetex C18 column using a 5 minute gradient previously described.⁴⁹ Using 10 μL injection volumes, non-polar lipids were resolved using UHPLC coupled to ddMS² using a 5 minute gradient method as previously described.⁵⁰

Following data acquisition, .raw files were converted to .mzXML using RawConverter. Metabolites were then annotated based on intact mass, ^{13}C natural isotope pattern and retention times in conjunction with the KEGG database and an in-house standard library. Peaks were integrated using El-Maven (Elucidata). Quality control was assessed as using technical replicates run at the beginning, end, and middle of each sequence as previously described. Lipidomics data were analyzed using LipidSearch 5.0 (Thermo Scientific), which provides lipid identification on the basis of accurate intact mass, isotopic pattern, and fragmentation pattern to determine lipid class and acyl chain composition.

Metabolomics and lipidomic data were analyzed using R Package (R Core Team) utilizing the following packages: shing, dplyr, plotly, ggplot2, circlize, and zip.

Image capture and analysis

All video and image processing were carried out using ImageJ.⁵¹ For image analysis, a single rectangular region of interest (ROI) measuring 1400 \times 2000 pixels was selected to cover the entire channel area. Cell lysis and protein denaturation curves were



generated by utilizing the “plot z-axis profile” function in ImageJ, which calculated the average grayscale intensity within the ROI for each frame throughout the image stack. The SAWHT of the RBCs was identified by aligning the rightmost peak of the curve with the corresponding temperature (refer to Fig. 1).

Statistical analysis

Statistical analyses were performed using Excel (Microsoft, USA), OriginPro (OriginLab, USA), and GraphPad Prism (GraphPad Software, USA) software. For comparisons between datasets, a two-sided, unpaired student's *t*-test was used. Significance levels were set as follows: **P* < 0.05, ***P* < 0.01, ****P* < 0.001.

Results and discussion

Device design and working principle

The schematic and working principle of the SAW-HA are shown in Fig. 1. The system consists of a PDMS microfluidic

channel bonded onto a piezoelectric LiNbO₃ substrate. Two gold IDTs are patterned symmetrically on either side of the 10 mm long, 80 μm high, and 1 mm wide channel. The device is placed in a custom-built holder fitted to a microscope stage and connected to BCA cables *via* a custom PCB connector (Fig. S1A). Upon activation with radio frequency (RF) signal, the IDTs generate SAWs that propagate toward each other, forming a one-dimensional standing SAW field.⁵² As the standing SAW interacts with the fluid inside the channel, acoustic energy radiates into the fluid due to the mismatch in sound velocity between the fluid and the substrate. This interaction induces pressure waves and acoustic heating effects caused by the viscous dissipation of acoustic energy into the fluid.⁴⁶ The pressure waves create alternating pressure nodes (regions of minimum pressure) and antinodes (regions of maximum pressure). Particles suspended in the fluid are driven toward these nodes or antinodes depending on acoustic contrast factors – their density and compressibility relative to the surrounding medium. The heating profile induced by the acoustic heating effect can be precisely tuned by altering parameters such as the standing SAW frequency, power input, duty cycle, and phase.

The standing SAW was applied to induce lysis of RBCs suspended in the microfluidic channel. The lysis process was tracked using high-resolution imaging and thermocouple-enabled temperature measurements, with grayscale intensity extracted from video data (Movie S1). The intensity was plotted as a function of temperature to quantitatively represent the process (Fig. 1B). When the standing SAW was applied at 19.5 MHz and 1.2 W, RBCs aggregated at the pressure nodes due to acoustic radiation forces. This aggregation led to a noticeable increase in image grayscale intensity, which corresponded to the initial steep rise in the intensity-temperature graph. As the temperature increased from approximately 40 °C to 75 °C, the structural and mechanical properties of the RBC membranes began to change.⁵³ These changes included alterations in cell density, compressibility, and acoustic contrast factors. The intensity-temperature graph showed oscillations during this phase, which could potentially be attributed to morphological transitions in the cells. The peak in the graph at approximately 80 °C represents the point of maximum image intensity, corresponding to the rupture of RBC membranes. We define this temperature as the SAW hemolysis temperature (SAWHT), which serves as a biomarker for RBC storage quality assessment. Following membrane rupture, intracellular proteins (predominantly hemoglobin) undergo denaturation, aggregation, and precipitation, which is reflected in the declining portion of the curve.

SAWHT as a biomarker evaluating RBC storage quality change

We quantified the SAWHT of each donor's RBCs as a function of storage time (Fig. 2A). Two distinct trends are

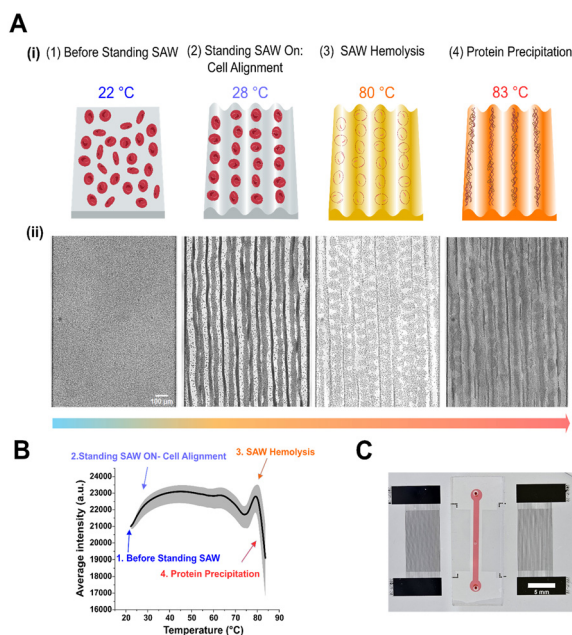


Fig. 1 Working mechanism of SAW hemolysis assay (SAW-HA). (A) (i) Schematic representation of the four sequential phases of RBC behavior in the microfluidic chamber under the standing SAW application: dispersed RBCs (22 °C), cell alignment (28 °C), RBC lysis (80 °C), and protein aggregation (83 °C). Cell and protein illustrations were created using BioRender. (ii) Representative high-contrast images correspond to the key phases outlined in (i). The scale bar represents 100 μm. Raw, unaltered images used for analysis are included in the supplementary materials (Fig. S2A). (B) Quantitative analysis of average grayscale intensity as a function of temperature from RBC samples of six donors using SAW-HA (*n* = 126). The curve highlights distinct phases of cell behavior. Points corresponding to images in (A) are annotated. Note that the temperature at the third point corresponds to the biomarker SAW hemolysis temperature (SAWHT). (C) Photograph of the experimental microfluidic device used for the SAW-HA. The device features integrated SAW transducers and sample chamber with thermocouple probe hole in the middle, with a scale bar of 5 mm.



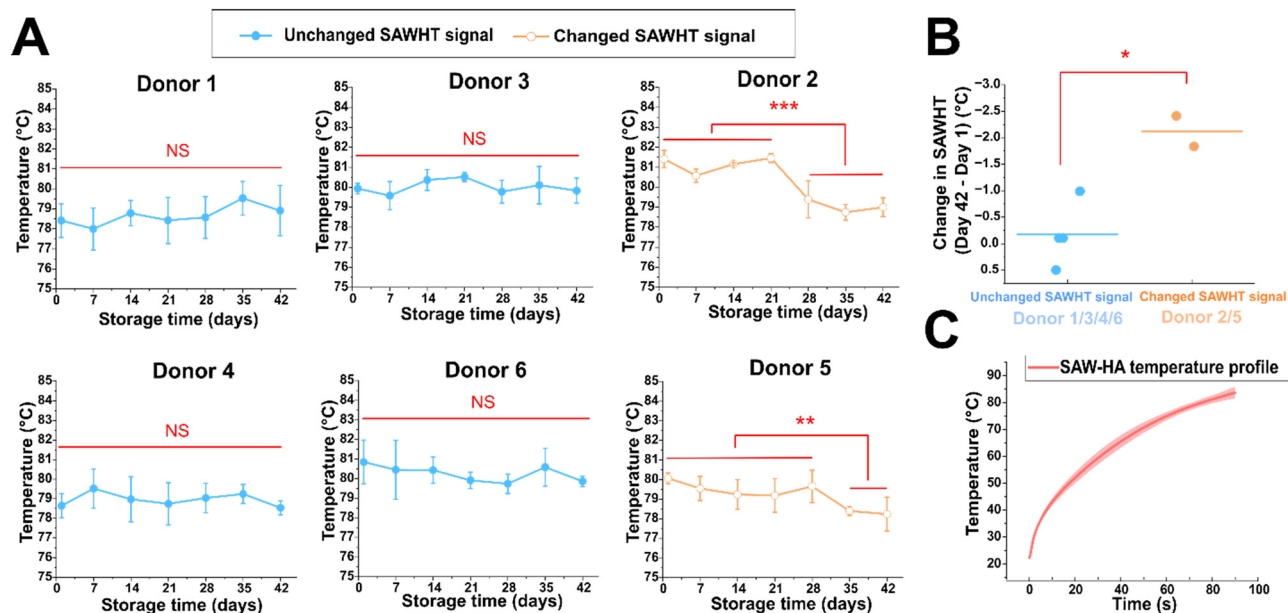


Fig. 2 SAW hemolysis temperature (SAWHT) serves as a biomarker for detecting donor-specific, storage-induced changes in RBC quality. (A) Weekly tracking of SAWHT for six biological samples (individual donors) throughout 42 days of cold storage. To establish device-to-device reproducibility, donor 1 was measured using all three SAW devices at each weekly time point ($n = 3$ technical replicates per time point). After confirming device consistency, donors 2–6 were measured using a single device. Each data point represents the mean \pm s.d. of three technical replicates. (B) Comparison of SAWHT changes during storage between two donor groups. Each data point represents one donor's change in SAWHT from day 1 to day 42 (Δ SAWHT = day 42 – day 1). The horizontal bar represents the mean of each group. Unchanged acoustic signal group: donors 1, 3, 4, 6; changed acoustic signal group: donors 2, 5. (C) The average temperature profile of the SAWHT across all six donors, demonstrating consistent temperature rise over time and its reproducibility ($n = 126$). The shaded region represents the standard deviation. The student t -tests of independence were performed in the above figures. * $P < 0.05$, ** $P < 0.01$, and *** $P < 0.001$; two-sided, unpaired t -test. NS, not significant.

apparent. Four donors (donors 1, 3, 4, and 6) maintained an unchanged acoustic signal over the 42 day storage period, with SAWHT showing minimal variation. In contrast, two donors (donors 2 and 5) exhibited significant decreases in SAWHT. For the unchanged acoustic signal group (donors 1, 3, 4, and 6), the average change in SAWHT over 42 days was -0.19 ± 0.61 °C (Fig. 2B). In contrast, the changed acoustic signal group (donors 2 and 5) displayed significant declines in SAWHT starting at specific time points. Donor 2 showed a noticeable decrease from day 28 onward, while donor 5 experienced a similar reduction starting from day 35. Both donors exhibited stabilization in SAWHT after the initial decrease, with no further significant changes observed through day 42. The average decrease in SAWHT for this group was -2.12 ± 0.41 °C, significantly greater than that of the unchanged group (Fig. 2B).

It is well established that the melting temperatures of proteins are highly sensitive to heating rates, particularly in traditional thermal shift assays.^{54,55} To ensure the reliability and comparability of results across storage periods and between donors, it is crucial to maintain a consistent heating rate during each trial. This approach minimizes variability arising from heating rate dependencies and allows for accurate assessment of stability changes in RBCs. Fig. 2C illustrates the heating profiles of RBC samples obtained from six donors over a 42 day storage period. The profiles remained consistent across different weeks for individual

donors, confirming that heating conditions were precisely controlled and uniform.

Acoustic effects play an important role in detecting RBC storage quality change

To isolate the role of acoustic waves beyond thermal contributions, we first conducted an electrical heating control (EHC) experiment. This control employed electrical heating under identical experimental conditions to the acoustic method, including channel dimensions, RBC concentrations, and video parameters (Fig. S1B and S3A, & Movie S2). The purpose of this experiment was to determine whether heating alone could account for the observed variations in SAWHT and to evaluate the effects of heating alone on detecting RBC storage quality change. The intensity *versus* temperature profiles obtained from the EHC (Fig. 3A) revealed distinct thermal transitions compared to the SAW-HA. An intensity decrease around 49 °C likely reflects morphological changes in RBCs due to denaturation of the cytoskeleton spectrin.⁵⁶ The rightmost peak in these profiles corresponds to the peak hemolysis point induced by electrical heating, which is followed by protein denaturation and precipitation. The average hemolysis temperature measured by the SAW-HA was significantly higher than that of the EHC (79.55 °C vs. 71.95 °C; Fig. 3D). Moreover, while donors 2 and 5 showed storage-dependent reductions in SAWHT using the SAW-HA, no such



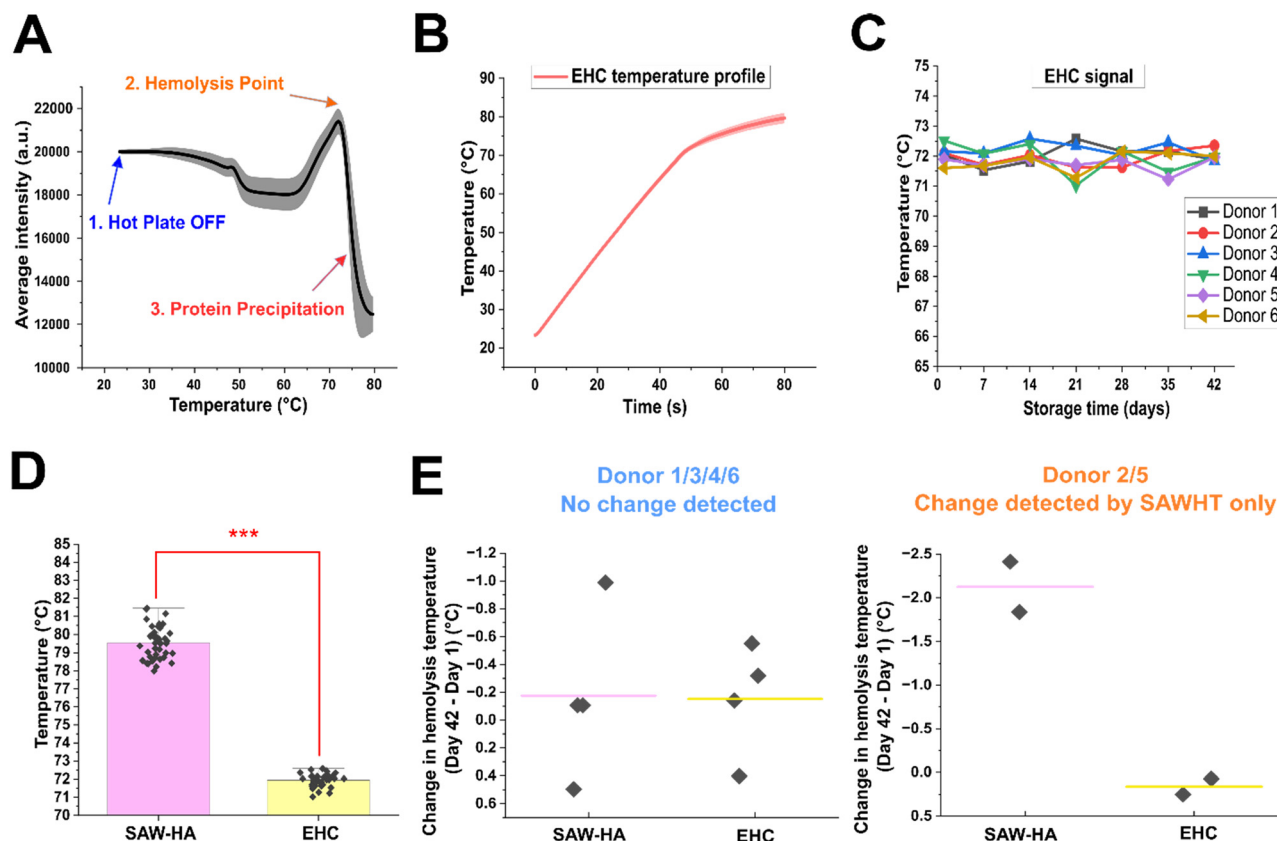


Fig. 3 Electrical heating control (EHC) shows that acoustic effects are critical for detecting changes of RBCs quality during cold storage. (A) Grayscale intensity versus temperature analysis of RBC samples from six donors under electrical heating reveals two key phases: (1) hemolysis point and (2) subsequent protein denaturation and precipitation ($n = 126$). Representative images with enhanced contrast for these phases are included in Fig. S3. Raw, unaltered images used for analysis are included in Fig. S2B. (B) Average temperature profile of EHC from all six donors, demonstrating consistent and controlled temperature progression over time ($n = 126$). The shaded region represents the standard deviation. (C) Weekly tracking of hemolysis temperatures across 42 days of cold storage for six biological samples (individual donors) under EHC. Each data point represents the mean of three technical replicates for each donor at each time point. Individual donor plots with mean \pm s.d. and statistical significance tests are shown in Fig. S3B. (D) Comparison of the hemolysis temperatures across all donors and weeks between SAW-HA and EHC ($n = 42$). (E) Comparison of the change in hemolysis temperature (day 42 minus day 1) between SAW-HA and EHC for two donor groups: donors 1/3/4/6 (unchanged acoustic signal) and donors 2/5 (changed acoustic signal). Each data point represents one donor's change in SAWHT/EHC hemolysis temperature from day 1 to day 42, and the horizontal bar represents the mean value. The student t -test of independence was performed. *** $P < 0.001$; two-sided, unpaired t -test.

trend was observed in the EHC (Fig. 3E). This contrast highlights the importance of acoustic effects—beyond heating alone—in detecting storage-induced changes in RBC quality.

To further confirm the role of acoustic waves and rule out potential confounding factors, we conducted an additional control experiment (Fig. S4). In this experiment, the heating profile of the SAW-HA was adjusted to closely replicate that of the EHC (Fig. S4A). By gradually increasing the acoustic power by 0.2 W every 10 seconds, we ensured that the temperature rise in this temperature-matched-to-EHC SAW-HA mirrored the slower heating profile observed in the EHC. The only key difference between this temperature-matched SAW-HA and the EHC is the presence of acoustic waves. The intensity versus temperature curves for the temperature-matched SAW-HA closely resembled those of the SAW-HA (Fig. S4C). Both acoustic assays exhibited higher hemolysis temperatures (~ 80 – 82 °C) compared to the EHC

(approximately 72 °C). Moreover, both assays detected storage-dependent shifts in hemolysis temperature for donors 2 and 5, a trend absent in the EHC. This finding demonstrates that the temperature difference in the initial of the heating profile or heat-shock effects (above 37 °C effect to cells) does not account for the observed donor-specific changes by the SAW-HA; rather, the presence of acoustic waves is essential for detecting these shifts.

Metabolite correlations with SAWHT can differentiate storage duration and donor phenotypes in RBCs

The relative abundance of metabolites central to energy and redox metabolism across all samples were correlated with storage duration (Fig. S5). Similar to previous reports, we observed accumulations of RBC storage biomarkers hypoxanthine, 5-oxoproline, and lactate over the storage duration,^{11,12} and glycolysis intermediates strongly negatively

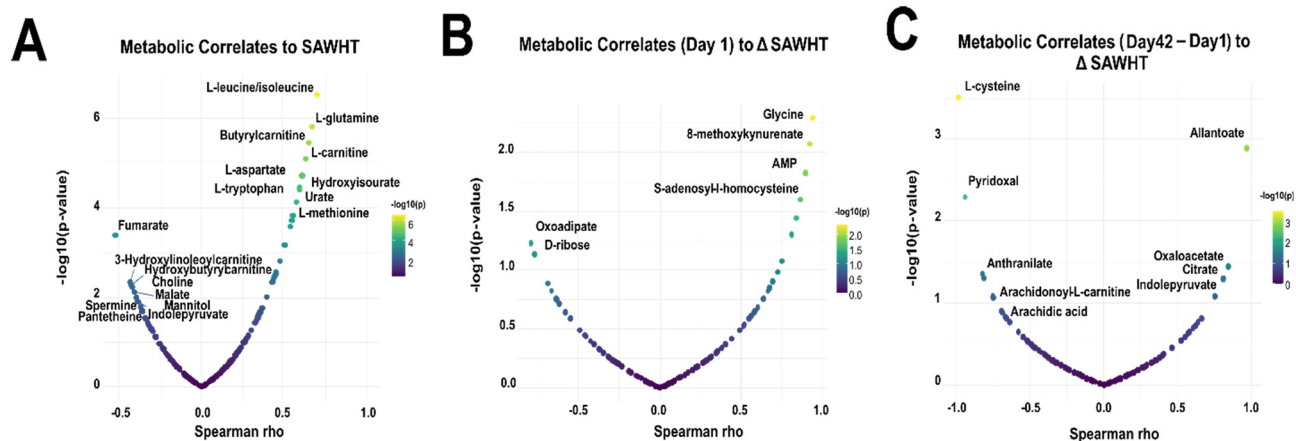


Fig. 4 A Spearman correlation analysis was performed between metabolite peak intensity (A.U.) and SAWHT. Metabolic correlates were graphed against p -value. Top correlates are labelled for (A) metabolite abundance versus SAWHT ($N = 42$), (B) correlates of day 1 metabolite abundance to change in SAWHT over storage duration (day 42 – day 1, $N = 6$), and (C) correlates of the change in metabolite abundance (day 42 – day 1) to changes in SAWHT over storage duration (day 42 – day 1, $N = 6$). Selected metabolite scatter plots for top correlates in A, B, and C are shown in Fig. S6.

correlated with storage duration, in keeping with the body of literature on the metabolic changes of aging RBCs *in vitro*.⁵⁷ We first correlated the change in metabolite abundance with SAWHT across all storage days (Fig. 4A and S6A). The top positive correlates were several essential amino acids (leucine, glutamine) and energy metabolism substrates (AMP). Negative correlates include dicarboxylates (citrate, fumarate) and hydroxybutyrylcarnitine (acyl-C4:OH).

Next, we correlated the abundance of metabolites on day 1 with the SAWHT over storage duration to identify features that predict decreased lysis temperatures on day 42 (Fig. 4B and S6B). Here, positive correlates represent metabolites that stabilize SAWHT and include glycine, AMP, *S*-adenosylhomocysteine (SAH), and 8-methoxykynurenate. Negative correlates include ribose and biliverdin but are not as strongly correlated.

We then correlated the change in abundance of metabolites (day 42 minus day 1) with the SAWHT over storage duration (Fig. 4C and S6C). This analysis identified cysteine as the top negative correlate, with the two donor samples that showed decreased lysis temperature accumulating cysteine. Pyridoxal, an antioxidant and the active form of vitamin B6, is also strongly negatively correlated. Anthranilate, a tryptophan metabolite like kynurenine and marker of oxidative stress, was also negatively associated, as well as long-chain fatty acids (FAs). Allantoate, a purine metabolite, showed the strongest positive correlation. In this sense, positive correlation demonstrates metabolites that are decreased in donors with decreased lysis temperature. Citrate, a carboxylic acid that abounds in citrated-anticoagulants, was also identified positively correlated along with fumarate, a catabolite of purine salvage and malate/aspartate metabolism.^{58,59}

To further interrogate the metabolic profiles during storage between the SAWHT-defined two groups of donors, we performed separate correlations of metabolite and lipid levels against change in SAWHT (Fig. 5A and B and S8). These analyses revealed several key pathways that are

selectively altered in donors with reduced SAWHT (Fig. 5C and S7). Donors 2 and 5 showed loss of correlation in glutamine and its downstream metabolites such as GSH, while the other donors showed positive correlations and stabilization of SAWHT glutamate and GSH. Spermine, a critical polyamine that negatively correlates with SAWHT in other donors, shows a lack of correlation in donors 2 and 5. Of major importance, tryptophan metabolism is drastically altered across multiple nodes in donors 2 and 5, with kynurenine, anthranilate, and serotonin showing reduced abundance and association with SAWHT. Furthermore, these donors show elevated triglycerides (TGs) concentration across all temperatures. Together, these results suggest that BMI may be tightly correlated with the SAWHT depression over time, as elevated TGs and disrupted tryptophan metabolism are associated with high BMI.^{60–62}

Current FDA guidelines permit refrigerated RBC storage up to 42 days, requiring a mean 24 hour autologous transfusion recovery rate of at least 75% across tested samples.²² However, statistical modeling of existing recovery data suggests only 67.3% of blood unit samples would meet this standard at 42 days, revealing significant variability in stored RBC quality that remains undetected in clinical practice due to the high cost and specialized expertise required for PTR testing.⁶³ A major contributor is donor-to-donor differences, with some individuals consistently producing better-storing RBCs than others.⁶⁴ Factors impacting the heterogeneity in the quality and post-transfusion efficacy of stored blood products include genetics,^{8,65} biology (sex, age, ethnicity),⁶ BMI,⁷ and recreational, professional, environmental, or other exposures.⁶⁶ Such variability poses significant risks for transfusion-dependent patients—such as those with thalassemia, sickle cell anemia, or trauma—who require frequent or massive transfusions. RBC units from poor storers can undergo rapid clearance, leading to iron overload,⁴ which in turn promotes inflammatory complications such as acute respiratory distress



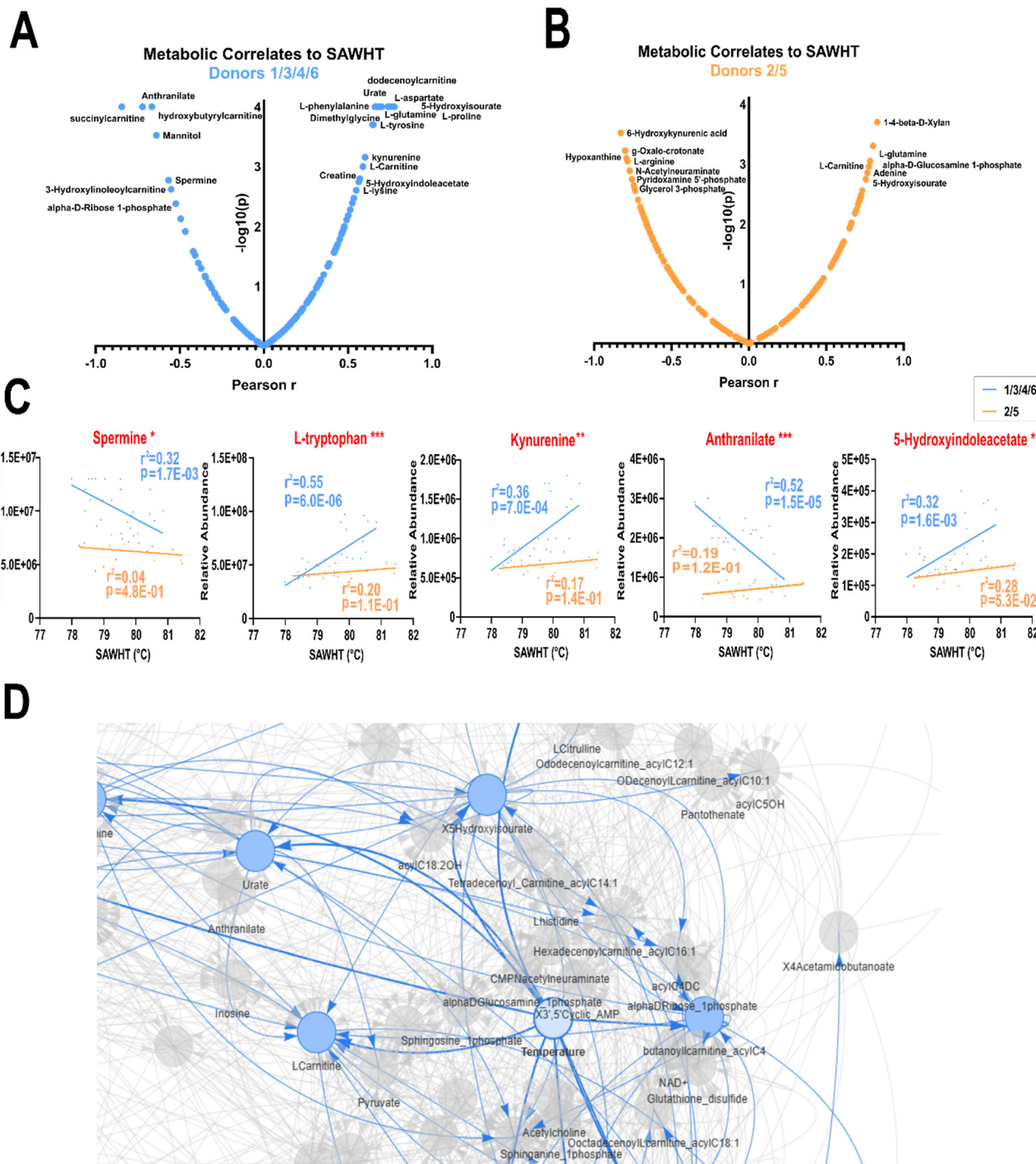


Fig. 5 A Pearson correlation analysis was independently performed between metabolite peak intensity (A.U.) and SAWHT within the two donor groups. Top correlates are labelled for (A) donors 1, 3, 4, and 6 ($N = 28$) and (B) donors 2 and 5 ($N = 14$). (C) Select features were graphed with significance marked for features with significantly different slopes between two donor groups by simple linear regression ($p < 0.05$ *, $p < 0.01$ **, $p < 0.001$ ***). Additional metabolites and lipids correlates of SAWHT are shown in Fig. S7. (D) A neural network analysis centered around metabolites that correlate to SAWHT ($N = 42$).

syndrome and cardiorenal dysfunction^{67,68} and increases susceptibility to infections by siderophilic bacteria.⁶⁹ Identifying high-quality RBC units based on donor characteristics may improve transfusion strategies, patient outcomes, and reduce healthcare costs.

Several technologies have been developed to assess RBC quality in high throughput and reveal donor–donor differences, including metabolic biomarkers,^{7,13,64,70} morphology analysis,^{25,26,32,33} and deformability-based microfluidic tests.^{37,38} While emerging methods have demonstrated success in



research settings, they face distinct challenges for clinical translation. Morphology-based methods using imaging flow cytometry or automated microscopy systems require sophisticated optical setups and complex computational algorithms that generate multiple output metrics (e.g., morphological index, spherocyte percentage, echinocyte percentage), requiring expert interpretation of multidimensional data. Deformability-based microfluidic approaches have demonstrated high sensitivity but are susceptible to channel clogging (particularly with stored blood containing debris and microparticles) and involve complex operation protocols with multiple pressure adjustments and manual calibration steps.

One of the key innovations of our method is the introduction of the SAW hemolysis temperature as a biomarker for RBC storage quality. Unlike traditional assays where lysis is a preprocessing step for intracellular content analysis,⁷¹ our results demonstrate that the temperature at which RBCs lyse by acoustics provides valuable insights into membrane integrity and biomechanical resilience. In contrast to existing approaches, our SAW hemolysis assay offers several practical advantages: (1) simple operation with single quantitative output that does not require expert interpretation; and (2) potential for integration into cost-effective miniaturized PCB-based devices supporting simultaneous operation of multiple SAW-HA units with on-board power management for portable, point-of-care deployment. This multi-device platform could address throughput requirements for routine blood quality monitoring. Additionally, sterile sampling innovations using interconnected primary and aliquot bag systems could enable representative testing without compromising transfusable unit integrity. These features position SAW-HA as a clinically viable platform for high-throughput blood product quality assessment in blood banking applications.

After confirming here that donor RBCs stored in a manner consistent with the literature (Fig. S5), our correlation analyses identified several SAW-specific metabolites associated with major changes in SAWHT (Fig. 4A and S6A). Metabolites strongly positively correlated to SAWHT represent potential biomarkers for healthy membrane stability. This list includes many amino acids, each contributing to a multitude of vital cellular functions. For instance, glutamine is a conditionally essential amino acid and player in erythropoiesis, as well as the precursor to the vital endogenous antioxidant glutathione.^{72,73} Tryptophan, the amino acid precursor to kynurenine and serotonin, was also observed to maintain healthy membrane stability.⁷⁴ Coincidentally, tryptophan metabolism has been shown to be dysregulated in obesity and metabolic dysfunction across multiple tissues.^{75–77} Additionally, the tryptophan metabolite kynurenine is a top metabolic correlate to osmotic stress and hemolysis despite a lack of storage-mediated changes.¹² In the realm of fatty acid metabolism, membrane stabilizer carnitine and hydroxylated acyl-carnitines were strong negative correlates, a potential double-hit to FA equilibrium.⁷⁸

We identified several metabolites as potential predictors of decreased lysis temperature over the storage duration (Fig. 4B

and S6B) including ribose and oxoadipate. While oxoadipate is an intermediate of tryptophan metabolism, D-ribose is a protein-glycation substrate, another critical process for membrane proteins as well as a player in oxidative stress and energy metabolism.⁷⁹ Inversely, we identified a few potential predictors of stable lysis temperature over the storage duration. AMP was decreased in the donor samples with reduced SAWHT. ATP is associated with erythrocyte membrane response to high pressure through alterations in phosphorylation and dephosphorylation of membrane proteins.⁸⁰ Glycine was the top correlated metabolite, most likely due to its role in glutathione synthesis and regulation of oxidative signalling and damage.⁸¹

Finally, we highlight metabolites that correlate with changes in SAWHT (Fig. 4C and S6C). Cysteine shows the strongest negative correlation, with the two donors with decreased SAWHT accumulating cysteine over the storage duration. While cysteine has been implicated in blood fluidity *in vitro*, it is most likely a marker of impaired glutathione synthesis.^{82,83} Thus, it is unsurprising that features involved in redox balance are also implicated, such as pyridoxal, anthranilate, and allantoate. Pyridoxal, an aldehyde of vitamin B6, is implicated in FA synthesis and acts as an ROS scavenger.⁸⁴ Anthranilate is another tryptophan metabolite and observed marker of donor age in stored RBCs.⁸⁵ Purine metabolite allantoate is also a biomarker of donor age and an established marker of oxidative stress.⁸⁶

Separation of the donor groups based on SAWHT over storage duration reveals that tryptophan and arginine metabolism over time are significantly altered over several nodes (Fig. 5A–C and S7). Additionally, glutamate, glutathione, and glutathione disulfide show downward trends. These pathways appear to be the most influential when predicting SAW hemolysis performance. A neural network analysis further identified L-carnitine, pyruvate and hydroxylated acyl-carnitines as associated players (Fig. 5D). Urate metabolism was identified as a nearby node to SAWHT, which has been shown to be associated with high BMI and increased hemolysis.⁸⁷

Although these pathways are important in blood aging, donor statistics also play an important role in the stability of the blood sample. Donors 2 and 5 have the highest BMI among the group (Table 1). There is a significant overlap between the biomarkers associated with hemolysis and those associated with high BMI. For instance, the high correlation of SAWHT with abundance of leucine and isoleucine could indicate insulin resistance associated with high BMI.⁸⁸ Additionally, TGs are among the lipid correlates to SAWHT (Fig. S7 and S8B). Elevated TGs are not only observed in obesity and associated with high BMI but are also a critical component of the RBC membrane.^{60,61} Upon further review of donor statistics, it was discovered that donors 2 and 5 were of Hispanic heritage (Table 1). Ethnicity has been shown to be a significant factor in RBC membrane-lipid profile, median BMI, and hemolysis in larger population studies. One such study in over 16 000 US Hispanic/Latinos found an overall prevalence of



Table 1 Donor demographic information. Donors are arranged in order of increasing BMI. Note that donors 2 and 5 exhibit the highest BMI values (36.9 and 33.0 lbs in⁻² respectively), classified as class II and class I obesity according to CDC guidelines⁶⁰

Donor	Sex	Race/ethnicity	Hemoglobin concentration (g dL ⁻¹)	Cholesterol (mg dL ⁻¹)	Height	Weight (lbs)	BMI (lbs in ⁻²)
3	M	White	18.2	155	5'10"	194	27.8
1	M	White	14.8	192	6'1"	214	28.2
4	F	White	14.7	145	5'7"	182	28.5
6	F	White	13.5	134	5'7"	197	30.9
5	F	Other hispanic	14.7	179	5'7"	211	33
2	M	Puerto Rican	17.3	143	5'9"	250	36.9

dyslipidemia in Hispanics at 65% and noted high incidences of elevated low-density lipoprotein cholesterol (LDL-C) and TGs.⁸⁹ When evaluating ethnicity as a variable in the determination of insulin resistance *via* TG levels, Mexican Americans had higher prevalence of syndromes associated with insulin resistance than African Americans despite similar occurrence of obesity, hypertension, and diabetes between the two groups.⁹⁰ Of interest to our SAW-HA, Hispanic blood donors exhibited higher markers of oxidative hemolysis than other donor populations.⁹¹ However, we report an altered metabolic profile for this SAW hemolysis when compared to either oxidative or osmotic hemolysis markers previously observed.¹² Thus, with the interplay of ethnicity, BMI, lipid profile, and hemolysis; we cannot single out one factor as the main contributor to our observed decrease in SAW-hemolysis temperature. Rather, we can conclude that these factors may combine to alter membrane stability during storage, and our method can identify donor samples that may have decreased efficacy as transfusion medicine. Finally, deficient tryptophan metabolism and reduced serotonin are also associated with high BMI, potentially explaining the lack of correlation in our donor set.^{62,75}

The SAW-HA provides a uniquely sensitive method for evaluating subtle changes in RBC membrane stability during cold storage. The mechanisms underlying this capability can be explained by the complex interactions between acoustic forces and cellular structures. Standing SAW imposes cyclic mechanical stresses (shear stresses, coupling with rapidly changing acoustic pressure fields and radiation pressures⁴⁷) that actively probe membrane fragility, revealing donor-specific mechanical vulnerabilities masked under thermal conditions alone. Our data demonstrates that acoustic methods produce significantly higher hemolysis temperatures than heat-only controls (79.55 °C *vs.* 71.95 °C), suggesting that acoustic forces fundamentally alter the cells' response to thermal stress. This effect likely occurs through multiple pathways: 1) acoustic forces may transiently reorganize lipid packing, as molecular dynamics simulations show that ultrasound can induce oscillatory pressure changes

that alter lipid tail ordering;^{92,93} 2) mechanical stimulation may modify membrane protein conformations through hydrophobic mismatch mechanisms, where small changes in bilayer thickness alters proteins toward new functional states;⁹⁴ and 3) acoustic perturbations likely engage the spectrin-actin cytoskeletal network, potentially strengthening membrane-skeleton coupling through mechanosensitive channel activation (*e.g.*, Piezo1) and calcium-dependent pathways.⁹⁵

Our data highlights several metabolic correlates with the new SAWHT metric described. However, high BMI and the associated metabolic phenotype seem to be an influential factor in our limited donor group. Still, the LOC protocol identified donor samples with decreased membrane stability, thus predicted to have decreased transfusion efficacy. As the transfusion field moves toward personalized medicine, assessing donor-specific factors such as BMI may be critical for optimizing blood storage and recipient outcomes. Our SAW-integrated device provides a scalable, rapid, and accessible approach to RBC quality assessment, offering a promising on-site tool for improving transfusion practices while addressing critical concerns about donor variability. Future objectives include larger scale, follow-up studies in combination with current non-bedside assays of transfusion efficacy.

Conclusions

In summary, we have developed the surface acoustic wave hemolysis assay (SAW-HA), a microfluidic platform that introduces SAW hemolysis temperature (SAWHT) as a quantitative biomarker for evaluating stored red blood cell quality. The SAW-HA differentiated donor-specific storage behaviours across six donors over 42 days, identifying two distinct phenotypes: donors with stable SAWHT (-0.19 ± 0.61 °C) and those with declining SAWHT (-2.12 ± 0.41 °C). Integration with metabolomics revealed that donors with decreased SAWHT were characterized by disrupted redox control, deficient tryptophan metabolism, and elevated triglycerides—metabolic biomarkers indicative of decreased



membrane stability—with high BMI emerging as a potential predictor of poor storage quality. Even in such a small sample group, SAWHT measurement was able to separate donor samples displaying markers of decreased membrane stability independently of donor ethnicity or metabolomics profile. This proof-of-concept platform addresses critical limitations in transfusion medicine by providing rapid (<2 minutes), sample-efficient (<2 µL), and cost-effective point-of-care analysis. It should, however, be noted that clinical translation requires validation through larger studies correlating SAWHT with gold-standard post-transfusion recovery methods, and metabolic correlations need confirmation across diverse populations to establish broader applicability. We believe the SAW-HA platform holds significant promise for advancing personalized transfusion medicine through rapid bedside quality assessment. Future applications may extend to diagnosing blood diseases, detecting pathological conditions that alter cellular membranes, and conducting fundamental membrane biophysics studies, potentially revolutionizing blood banking practices and improving patient outcomes.

Author contributions

M. S., C. C. A., A. D., and X. D., designed the study. C. C. A., J. A. R., A. D. performed omics analyses. X. D. contributed to the conceptualization. M. S., N. S., performed experiments. M. S., C. C. A. wrote the first draft of the manuscript, which was reviewed and finalized by all co-authors.

Conflicts of interest

A patent application based on this work is filed.

Data availability

All data supporting the findings of this study are included in the main text and the supplementary information (SI). The omics raw data is available at the NIH Common Fund's National Metabolomics Data Repository (NMDR) website, the Metabolomics Workbench, <https://www.metabolomicsworkbench.org> where it has been assigned Project ID ST004148. The data can be accessed directly via its Project DOI: <https://doi.org/10.21228/M88R80>.

Supplementary information is available. See DOI: <https://doi.org/10.1039/d5lc00652j>.

Acknowledgements

The microfluidic devices were fabricated in JILA and COSINC clean room at University of Colorado Boulder. We acknowledge funding support from NIH MIRA award 1R35GM142817 and W. M. Keck Foundation grant to X. D. We also acknowledge funding support to A. D. by Metabolomics Workbench/National Metabolomics Data Repository (NMDR) (grant# U2C-DK119886), Common Fund Data Ecosystem (CFDE) (grant# 3OT2OD030544), Metabolomics Consortium Coordinating

Center (M3C) (grant# 1U2C-DK119889), and National Heart, Lung and Blood Institutes (NHLBI) award R01HL146442 and R01HL149714.

Notes and references

- 1 J. C. Zimring, Established and theoretical factors to consider in assessing the red cell storage lesion, *Blood*, 2015, **125**, 2185–2190.
- 2 S. Peltier, M. Marin, M. Dzieciatkowska, M. Dussiot, M. K. Roy and J. Bruce, *et al.*, Proteostasis and metabolic dysfunction characterize a subset of storage-induced senescent erythrocytes targeted for post-transfusion clearance, *J. Clin. Invest.*, 2025, **135**(9), e183099.
- 3 J. Rabcuka, S. Blonski, A. Meli, S. Sowemimo-Coker, D. Zaremba and D. Stephenson, *et al.*, Metabolic reprogramming under hypoxic storage preserves faster oxygen unloading from stored red blood cells, *Blood Adv.*, 2022, **6**, 5415–5428.
- 4 E. A. Hod, N. Zhang, S. A. Sokol, B. S. Wojczyk, R. O. Francis and D. Ansaldi, *et al.*, Transfusion of red blood cells after prolonged storage produces harmful effects that are mediated by iron and inflammation, *Blood*, 2010, **115**, 4284–4292.
- 5 Z. Isiksacan, A. D'Alessandro, S. M. Wolf, D. H. McKenna, S. N. Tessier and E. Kucukal, *et al.*, Assessment of stored red blood cells through lab-on-a-chip technologies for precision transfusion medicine, *Proc. Natl. Acad. Sci. U. S. A.*, 2023, **120**, e2115616120.
- 6 T. Kanas, M. C. Lanteri, G. P. Page, Y. Guo, S. M. Endres and M. Stone, *et al.*, Ethnicity, sex, and age are determinants of red blood cell storage and stress hemolysis: results of the REDS-III RBC-Omics study, *Blood Adv.*, 2017, **1**, 1132–1141.
- 7 K. Hazegh, F. Fang, M. D. Bravo, J. Q. Tran, M. O. Muench and R. P. Jackman, *et al.*, Blood donor obesity is associated with changes in red blood cell metabolism and susceptibility to hemolysis in cold storage and in response to osmotic and oxidative stress, *Transfusion*, 2021, **61**, 435–448.
- 8 G. P. Page, T. Kanas, Y. J. Guo, M. C. Lanteri, X. Zhang and A. E. Mast, *et al.*, Multiple-ancestry genome-wide association study identifies 27 loci associated with measures of hemolysis following blood storage, *J. Clin. Invest.*, 2021, **131**(13), e146077.
- 9 A. D'Alessandro and E. A. Hod, Red Blood Cell Storage: From Genome to Exposome towards Personalized Transfusion Medicine, *Transfus. Med. Rev.*, 2023, **37**, 150750.
- 10 C. G. Koch, A. I. Duncan, P. Figueroa, L. Dai, D. I. Sessler and S. M. Frank, *et al.*, Real Age: Red Blood Cell Aging During Storage, *Ann. Thorac. Surg.*, 2019, **107**, 973–980.
- 11 G. Paglia, A. D'Alessandro, Ó. Rolfsson, Ó. E. Sigurjónsson, A. Bordbar and S. Palsson, *et al.*, Biomarkers defining the metabolic age of red blood cells during cold storage, *Blood*, 2016, **128**, e43–e50.
- 12 T. Nemkov, D. Stephenson, C. Erickson, M. Dzieciatkowska, A. Key and A. Moore, *et al.*, Regulation of kynurenine metabolism by blood donor genetics and biology impacts red cell hemolysis in vitro and in vivo, *Blood*, 2024, **143**, 456–472.
- 13 T. Nemkov, A. Key, D. Stephenson, E. J. Earley, G. R. Keele and A. Hay, *et al.*, Genetic regulation of carnitine



- metabolism controls lipid damage repair and aging RBC hemolysis in vivo and in vitro, *Blood*, 2024, **143**, 2517–2533.
- 14 S. Fenk, E. V. Melnikova, A. A. Anashkina, Y. M. Poluektov, P. I. Zaripov and V. A. Mitkevich, *et al.*, Hemoglobin is an oxygen-dependent glutathione buffer adapting the intracellular reduced glutathione levels to oxygen availability, *Redox Biol.*, 2022, **58**, 102535.
 - 15 G. R. Keele, M. Dzieciatkowska, A. M. Hay, M. Vincent, C. O'Connor and D. Stephenson, *et al.*, Genetic architecture of the red blood cell proteome in genetically diverse mice reveals central role of hemoglobin beta cysteine redox status in maintaining circulating glutathione pools, *Cell Genomics*, 2026, DOI: [10.1016/j.xgen.2025.101069](https://doi.org/10.1016/j.xgen.2025.101069), in press.
 - 16 S. Whillier, J. E. Raftos, R. L. Sparrow and P. W. Kuchel, The effects of long-term storage of human red blood cells on the glutathione synthesis rate and steady-state concentration, *Transfusion*, 2011, **51**, 1450–1459.
 - 17 T. Nemkov, D. Stephenson, E. J. Earley, G. R. Keele, A. Hay and A. Key, *et al.*, Biological and genetic determinants of glycolysis: Phosphofructokinase isoforms boost energy status of stored red blood cells and transfusion outcomes, *Cell Metab.*, 2024, **36**, 1979–1997.e13.
 - 18 A. D'Alessandro, G. R. Keele, A. Hay, T. Nemkov, E. J. Earley and D. Stephenson, *et al.*, Ferroptosis regulates hemolysis in stored murine and human red blood cells, *Blood*, 2025, **145**, 765–783.
 - 19 J. R. Hess, R. L. Sparrow, P. F. Van Der Meer, J. P. Acker, R. A. Cardigan and D. V. Devine, BLOOD COMPONENTS: Red blood cell hemolysis during blood bank storage: using national quality management data to answer basic scientific questions: RBC HEMOLYSIS DURING STORAGE, *Transfusion*, 2009, **49**, 2599–2603.
 - 20 C. L'Acqua, S. Bandyopadhyay, R. O. Francis, D. J. McMahon, M. Nellis and S. Sheth, *et al.*, Red blood cell transfusion is associated with increased hemolysis and an acute phase response in a subset of critically ill children, *Am. J. Hematol.*, 2015, **90**, 915–920.
 - 21 F. Rapido, G. M. Brittenham, S. Bandyopadhyay, F. La Carpia, C. L'Acqua and D. J. McMahon, *et al.*, Prolonged red cell storage before transfusion increases extravascular hemolysis, *J. Clin. Invest.*, 2017, **127**, 375–382.
 - 22 C. Roussel, P. A. Buffet and P. Amireault, Measuring Post-transfusion Recovery and Survival of Red Blood Cells: Strengths and Weaknesses of Chromium-51 Labeling and Alternative Methods, *Front. Med.*, 2018, **5**, 130.
 - 23 I. Mustafa, A. Al Marwani, K. Mamdouh Nasr, N. Abdulla Kano and T. Hadwan, Time Dependent Assessment of Morphological Changes: Leukodepleted Packed Red Blood Cells Stored in SAGM, *BioMed Res. Int.*, 2016, **2016**, 4529434.
 - 24 M. Marin, C. Roussel, M. Dussiot, P. A. Ndour, O. Hermine and Y. Colin, *et al.*, Metabolic rejuvenation upgrades circulatory functions of red blood cells stored under blood bank conditions, *Transfusion*, 2021, **61**, 903–918.
 - 25 C. Roussel, M. Dussiot, M. Marin, A. Morel, P. A. Ndour and J. Duez, *et al.*, Spherocytic shift of red blood cells during storage provides a quantitative whole cell-based marker of the storage lesion, *Transfusion*, 2017, **57**, 1007–1018.
 - 26 C. Roussel, A. Morel, M. Dussiot, M. Marin, M. Colard and A. Fricot-Monsinjon, *et al.*, Rapid clearance of storage-induced microerythrocytes alters transfusion recovery, *Blood*, 2021, **137**, 2285–2298.
 - 27 E. M. Strohm, E. S. L. Berndt and M. C. Kolios, Probing Red Blood Cell Morphology Using High-Frequency Photoacoustics, *Biophys. J.*, 2013, **105**, 59–67.
 - 28 C. G. Atkins, H. G. Schulze, D. Chen, D. V. Devine, M. W. Blades and R. F. B. Turner, Using Raman spectroscopy to assess hemoglobin oxygenation in red blood cell concentrate: an objective proxy for morphological index to gauge the quality of stored blood?, *Analyst*, 2017, **142**, 2199–2210.
 - 29 T. L. Berezina, S. B. Zaets, C. Morgan, C. R. Spillert, M. Kamiyama and Z. Spolarics, *et al.*, Influence of Storage on Red Blood Cell Rheological Properties, *J. Surg. Res.*, 2002, **102**, 6–12.
 - 30 M. Paulitschke and G. B. Nash, Micropipette methods for analysing blood cell rheology and their application to clinical research, *Clin. Hemorheol. Microcirc.*, 1993, **13**, 407–434.
 - 31 A. M. van Cromvoirt, S. Fenk, A. Sadafi, E. V. Melnikova, D. A. Lagutkin and K. Dey, *et al.*, Donor Age and Red Cell Age Contribute to the Variance in Lorrca Indices in Healthy Donors for Next Generation Ektacytometry: A Pilot Study, *Front. Physiol.*, 2021, **12**, 639722.
 - 32 F. D. A. Sierra, K. A. Melzak, K. Janetzko, H. Klüter, H. Suhr and K. Bieback, *et al.*, Flow morphometry to assess the red blood cell storage lesion, *Cytometry, Part A*, 2017, **91**, 874–882.
 - 33 S. M. Recktenwald, M. G. M. Lopes, S. Peter, S. Hof, G. Simionato and K. Peikert, *et al.*, ErySense, a Lab-on-a-Chip-Based Point-of-Care Device to Evaluate Red Blood Cell Flow Properties With Multiple Clinical Applications, *Front. Physiol.*, 2022, **13**, 884690.
 - 34 Y. Yao, L. He, L. Mei, Y. Weng, J. Huang and S. Wei, *et al.*, Cell damage evaluation by intelligent imaging flow cytometry, *Cytometry, Part A*, 2023, **103**, 646–654.
 - 35 L. Kaestner, P. Schlenke, M. von Lindern and W. El Nemer, Translatable tool to quantitatively assess the quality of red blood cell units and tailored cultured red blood cells for transfusion, *Proc. Natl. Acad. Sci. U. S. A.*, 2024, **121**, e2318762121.
 - 36 Z. Xu, Y. Zheng, X. Wang, N. Shehata, C. Wang and Y. Sun, Stiffness increase of red blood cells during storage, *Microsyst. Nanoeng.*, 2018, **4**, 17103.
 - 37 P. Guruprasad, R. G. Mannino, C. Caruso, H. Zhang, C. D. Josephson and J. D. Roback, *et al.*, Integrated automated particle tracking microfluidic enables high-throughput cell deformability cytometry for red cell disorders, *Am. J. Hematol.*, 2019, **94**, 189–199.
 - 38 E. Islamzada, K. Matthews, Q. Guo, A. T. Santoso, S. P. Duffy and M. D. Scott, *et al.*, Deformability based sorting of stored red blood cells reveals donor-dependent aging curves, *Lab Chip*, 2020, **20**, 226–235.
 - 39 Y. Zheng, J. Chen, T. Cui, N. Shehata, C. Wang and Y. Sun, Characterization of red blood cell deformability change during blood storage, *Lab Chip*, 2013, **14**, 577–583.



- 40 Y. Man, E. Kucukal, R. An, Q. D. Watson, J. Bosch and P. A. Zimmerman, *et al.*, Microfluidic assessment of red blood cell mediated microvascular occlusion, *Lab Chip*, 2020, **20**, 2086–2099.
- 41 J. Bhadra, N. Sridhar, A. K. Fajrial, N. Hammond, D. Xue and X. Ding, Acoustic streaming enabled moderate swimming exercise reduces neurodegeneration in *C. elegans*, *Sci. Adv.*, 2023, **9**, eadf5056.
- 42 Y. Gao, T. Voglhuber-Brunnmaier, Y. Li, L. Akh, N. H. Patino and A. K. Fajrial, *et al.*, Reconfiguring Surface Acoustic Wave Microfluidics via In Situ Control of Elastic Wave Polarization, *Phys. Rev. Lett.*, 2025, **134**, 037002.
- 43 G. Shakya, T. Yang, Y. Gao, A. K. Fajrial, B. Li and M. Ruzzene, *et al.*, Acoustically manipulating internal structure of disk-in-sphere endoskeletal droplets, *Nat. Commun.*, 2022, **13**, 987.
- 44 Y. Gao, K. Liu, R. Lakerveld and X. Ding, Staged Assembly of Colloids Using DNA and Acoustofluidics, *Nano Lett.*, 2022, **22**, 6907–6915.
- 45 N. Sridhar, A. K. Fajrial, R. Doser, F. Hoerndli and X. Ding, Surface Acoustic Wave Microfluidics for Repetitive and Reversible Temporary Immobilization of *C. elegans*, *Lab Chip*, 2022, **22**, 4882–4893.
- 46 R. J. Shilton, V. Mattoli, M. Travagliati, M. Agostini, A. Desii and F. Beltram, *et al.*, Rapid and Controllable Digital Microfluidic Heating by Surface Acoustic Waves, *Adv. Funct. Mater.*, 2015, **25**, 5895–5901.
- 47 J. Reboud, Y. Bourquin, R. Wilson, G. S. Pall, M. Jiwaji and A. R. Pitt, *et al.*, Shaping acoustic fields as a toolset for microfluidic manipulations in diagnostic technologies, *Proc. Natl. Acad. Sci. U. S. A.*, 2012, **109**, 15162–15167.
- 48 Y. Ding, K. A. Ball, K. J. Webb, Y. Gao, A. D'Alessandro and W. M. Old, *et al.*, On-Chip Acousto Thermal Shift Assay for Rapid and Sensitive Assessment of Protein Thermodynamic Stability, *Small*, 2020, **16**, 2003506.
- 49 T. Nemkov, J. A. Reisz, S. Gehrke, K. C. Hansen and A. D'Alessandro, High-Throughput Metabolomics: Isocratic and Gradient Mass Spectrometry-Based Methods, in *High-Throughput Metabolomics: Methods and Protocols [Internet]*, ed. A. D'Alessandro, Springer, New York, NY, 2019, pp. 13–26, DOI: [10.1007/978-1-4939-9236-2_2](https://doi.org/10.1007/978-1-4939-9236-2_2), [cited 2025 Apr 29].
- 50 J. A. Reisz, M. Dzieciatkowska, D. Stephenson, F. Gamboni, D. H. Morton and A. D'Alessandro, Red Blood Cells from Individuals with Lesch-Nyhan Syndrome: Multi-Omics Insights into a Novel S162N Mutation Causing Hypoxanthine-Guanine Phosphoribosyltransferase Deficiency, *Antioxidants*, 2023, **12**, 1699.
- 51 C. A. Schneider, W. S. Rasband and K. W. Eliceiri, NIH Image to ImageJ: 25 years of image analysis, *Nat. Methods*, 2012, **9**, 671–675.
- 52 Y. Gao, A. K. Fajrial, T. Yang and X. Ding, Emerging on-chip surface acoustic wave technology for small biomaterials manipulation and characterization, *Biomater. Sci.*, 2021, **9**, 1574–1582.
- 53 S. Christel and C. Little, Morphological changes during heating of erythrocytes from stored human blood, *J. Therm. Biol.*, 1984, **9**, 221–228.
- 54 A. Toda, Heating rate dependence of melting peak temperature examined by DSC of heat flux type, *J. Therm. Anal. Calorim.*, 2016, **123**, 1795–1808.
- 55 J. E. K. Schawe, Temperature correction at high heating rates for conventional and fast differential scanning calorimetry, *Thermochim. Acta*, 2021, **698**, 178879.
- 56 J. F. Brandts, L. Erickson, K. Lysko, A. T. Schwartz and R. D. Taverna, Calorimetric studies of the structural transitions of the human erythrocyte membrane. The involvement of spectrin in the A transition, *Biochemistry*, 1977, **16**, 3450–3454.
- 57 A. D'Alessandro, A. T. Anastasiadi, V. L. Tzounakas, T. Nemkov, J. A. Reisz and A. G. Kriebardis, *et al.*, Red Blood Cell Metabolism In Vivo and In Vitro, *Metabolites*, 2023, **13**, 793.
- 58 A. Bordbar, J. T. Yurkovich, G. Paglia, O. Rolfsson, Ó. E. Sigurjónsson and B. O. Palsson, Elucidating dynamic metabolic physiology through network integration of quantitative time-course metabolomics, *Sci. Rep.*, 2017, **7**, 46249.
- 59 T. Nemkov, K. Sun, J. A. Reisz, T. Yoshida, A. Dunham and E. Y. Wen, *et al.*, Metabolism of Citrate and Other Carboxylic Acids in Erythrocytes As a Function of Oxygen Saturation and Refrigerated Storage, *Front. Med.*, 2017, **4**, 175.
- 60 V. Hjellvik, S. Sakshaug and H. Strøm, Body mass index, triglycerides, glucose, and blood pressure as predictors of type 2 diabetes in a middle-aged Norwegian cohort of men and women, *Clin. Epidemiol.*, 2012, **4**, 213–224.
- 61 Z. Makhoul, A. R. Kristal, R. Gulati, B. Luick, A. Bersamin and D. O'Brien, *et al.*, Associations of obesity with triglycerides and C-reactive protein are attenuated in adults with high red blood cell eicosapentaenoic and docosahexaenoic acids, *Eur. J. Clin. Nutr.*, 2011, **65**, 808–817.
- 62 J. Lischka, A. Schanzer, M. Baumgartner, C. de Gier, S. Greber-Platzer and M. Zeyda, Tryptophan Metabolism Is Associated with BMI and Adipose Tissue Mass and Linked to Metabolic Disease in Pediatric Obesity, *Nutrients*, 2022, **14**, 286.
- 63 L. J. Dumont, J. P. AuBuchon and Collaborative BE for ST (BEST), Evaluation of proposed FDA criteria for the evaluation of radiolabeled red cell recovery trials, *Transfusion*, 2008, **48**, 1053–1060.
- 64 A. D'Alessandro, J. C. Zimring and M. Busch, Chronological storage age and metabolic age of stored red blood cells: are they the same?, *Transfusion*, 2019, **59**, 1620–1623.
- 65 N. H. Roubinian, S. E. Reese, H. Qiao, C. Plimier, F. Fang and G. P. Page, *et al.*, Donor genetic and nongenetic factors affecting red blood cell transfusion effectiveness, *JCI Insight*, 2022, **7**(1), e152598.
- 66 T. Nemkov, D. Stefanoni, A. Bordbar, A. Issaian, B. O. Palsson and L. J. Dumont, *et al.*, Blood donor exposome and impact of common drugs on red blood cell metabolism, *JCI Insight*, 2021, **6**, e146175.
- 67 E. C. Vamvakas and M. A. Blajchman, Transfusion-related immunomodulation (TRIM): An update, *Blood Rev.*, 2007, **21**, 327–348.
- 68 C. C. Silliman, Y. L. Fung, J. B. Ball and S. Y. Khan, Transfusion-related acute lung injury (TRALI): Current Concepts and Misconceptions, *Blood Rev.*, 2009, **23**, 245–255.



- 69 F. La Carpia, B. S. Wojczyk, M. K. Annavajhala, A. Rebbaa, R. Culp-Hill and A. D'Alessandro, *et al.*, Transfusional iron overload and intravenous iron infusions modify the mouse gut microbiota similarly to dietary iron, *npj Biofilms Microbiomes*, 2019, **5**, 1–11.
- 70 R. Cazzola, M. Rondanelli, S. Russo-Volpe, E. Ferrari and B. Cestaro, Decreased membrane fluidity and altered susceptibility to peroxidation and lipid composition in overweight and obese female erythrocytes, *J. Lipid Res.*, 2004, **45**, 1846–1851.
- 71 L. Nan, Z. Jiang and X. Wei, Emerging microfluidic devices for cell lysis: a review, *Lab Chip*, 2014, **14**, 1060–1073.
- 72 J. Lyu, Z. Gu, Y. Zhang, H. S. Vu, C. Lechauve and F. Cai, *et al.*, A glutamine metabolic switch supports erythropoiesis, *Science*, 2024, **386**, eadh9215.
- 73 S. Whillier, B. Garcia, B. E. Chapman, P. W. Kuchel and J. E. Raftos, Glutamine and α -ketoglutarate as glutamate sources for glutathione synthesis in human erythrocytes, *FEBS J.*, 2011, **278**, 3152–3163.
- 74 J. Wenninger, A. Meinitzer, S. Holasek, W. J. Schnedl, S. Zelzer and H. Mangge, *et al.*, Associations between tryptophan and iron metabolism observed in individuals with and without iron deficiency, *Sci. Rep.*, 2019, **9**, 14548.
- 75 C. Arto, E. C. Rusu, H. Clavero-Mestres, A. Barrientos-Riosalido, L. Bertran and R. Mahmoudian, *et al.*, Metabolic profiling of tryptophan pathways: Implications for obesity and metabolic dysfunction-associated steatotic liver disease, *Eur. J. Clin. Invest.*, 2024, **54**, e14279.
- 76 A. L. Bartlett, L. Romick-Rosendale, A. Nelson, S. Abdullah, N. Luebbering and J. Bartlett, *et al.*, Tryptophan metabolism is dysregulated in individuals with Fanconi anemia, *Blood Adv.*, 2021, **5**, 250–261.
- 77 S. Cussotto, I. Delgado, A. Anesi, S. Dexpert, A. Aubert and C. Beau, *et al.*, Tryptophan Metabolic Pathways Are Altered in Obesity and Are Associated With Systemic Inflammation, *Front. Immunol.*, 2020, **11**, 557.
- 78 S. Kumar Sarker, M. T. Islam, G. Sarower Bhuyan, N. Sultana, M. N. Begum and M. Al Mahmud-Un-Nabi, *et al.*, Impaired acylcarnitine profile in transfusion-dependent beta-thalassemia major patients in Bangladesh, *J. Adv. Res.*, 2018, **12**, 55–66.
- 79 Z. Zhang, Y. Tai, Z. Liu, Y. Pu, L. An and X. Li, *et al.*, Effects of d-ribose on human erythrocytes: Non-enzymatic glycation of hemoglobin, eryptosis, oxidative stress and energy metabolism, *Blood Cells, Mol. Dis.*, 2023, **99**, 102725.
- 80 T. Yamaguchi and S. Fukuzaki, ATP effects on response of human erythrocyte membrane to high pressure, *Biophys. Physicobiol.*, 2019, **16**, 158–166.
- 81 H. C. Binns, E. Alipour, C. E. Sherlock, D. S. Nahid, J. F. Whitesides and A. O. Cox, *et al.*, Amino acid supplementation confers protection to red blood cells before *Plasmodium falciparum* bystander stress, *Blood Adv.*, 2024, **8**, 2552–2564.
- 82 I. Otoyama, H. Hamada, T. Kimura, H. Namba, K. Sekikawa and N. Kamikawa, *et al.*, L-cysteine improves blood fluidity impaired by acetaldehyde: In vitro evaluation, *PLoS One*, 2019, **14**, e0214585.
- 83 J. E. Raftos, S. Whillier and P. W. Kuchel, Glutathione Synthesis and Turnover in the Human Erythrocyte: Alignment of a Model Based on Detailed Enzyme Kinetics with Experimental Data, *J. Biol. Chem.*, 2010, **285**, 23557–23567.
- 84 M. Parra, S. Stahl and H. Hellmann, Vitamin B6 and Its Role in Cell Metabolism and Physiology, *Cells*, 2018, **7**, 84.
- 85 J. A. Reisz, E. J. Earley, T. Nemkov, A. Key, D. Stephenson and G. R. Keele, *et al.*, Arginine metabolism is a biomarker of red blood cell and human aging, *Aging Cell*, 2024, e14388.
- 86 M. K. Roy, F. Cendali, G. Ooyama, F. Gamboni, H. Morton and A. D'Alessandro, Red Blood Cell Metabolism in Pyruvate Kinase Deficient Patients, *Front. Physiol.*, 2021, **12**, 735543.
- 87 A. M. Key, E. J. Earley, V. L. Tzounakas, A. T. Anastasiadi, T. Nemkov and D. Stephenson, *et al.*, Red blood cell urate levels are linked to hemolysis in vitro and post-transfusion as a function of donor sex, population and genetic polymorphisms in SLC2A9 and ABCG2, *Transfusion*, 2025, **65**, 560–574.
- 88 J. P. De Bandt, X. Coumoul and R. Barouki, Branched-Chain Amino Acids and Insulin Resistance, from Protein Supply to Diet-Induced Obesity, *Nutrients*, 2023, **15**, 68.
- 89 C. J. Rodriguez, M. L. Daviglus, K. Swett, H. M. González, L. C. Gallo and S. Wassertheil-Smoller, *et al.*, Dyslipidemia Patterns among Hispanics/Latinos of Diverse Background in the United States, *Am. J. Med.*, 2014, **127**, 1186–1194.e1.
- 90 A. E. Sumner and C. C. Cowie, Ethnic differences in the ability of triglyceride levels to identify insulin resistance, *Atherosclerosis*, 2008, **196**, 696–703.
- 91 A. D'Alessandro, X. Fu, T. Kaniyas, J. A. Reisz, R. Culp-Hill and Y. Guo, *et al.*, Donor sex, age and ethnicity impact stored red blood cell antioxidant metabolism through mechanisms in part explained by glucose 6-phosphate dehydrogenase levels and activity, *Haematologica*, 2021, **106**, 1290–1302.
- 92 M. L. Prieto, Ö. Oralkan, B. T. Khuri-Yakub and M. C. Maduke, Dynamic Response of Model Lipid Membranes to Ultrasonic Radiation Force, *PLoS One*, 2013, **8**, e77115.
- 93 A. Blanco-González, S. J. Marrink, Á. Piñeiro and R. García-Fandiño, Molecular insights into the effects of focused ultrasound mechanotherapy on lipid bilayers: Unlocking the keys to design effective treatments, *J. Colloid Interface Sci.*, 2023, **650**, 1201–1210.
- 94 R. Phillips, T. Ursell, P. Wiggins and P. Sens, Emerging roles for lipids in shaping membrane-protein function, *Nature*, 2009, **459**, 379–385.
- 95 S. M. Cahalan, V. Lukacs, S. S. Ranade, S. Chien, M. Bandell and A. Patapoutian, Piezo1 links mechanical forces to red blood cell volume, *eLife*, 2015, **4**, e07370.

