



Cite this: *Org. Biomol. Chem.*, 2019, **17**, 1862

## Studies on a landscape of perfluoroaromatic-reactive peptides†

Ethan D. Evans  and Bradley L. Pentelute \*

We investigated 26 midsized peptides (~30 amino acids in length) selected using mRNA display to perform a nucleophilic aromatic substitution reaction ( $S_NAr$ ). Analysis suggested a diverse set of reactive sequences with significant differences in primary sequence, secondary structure and even predicted tertiary structural features. Several of the sequences displayed rapid kinetics allowing for near complete labeling in under one hour. Rosetta *ab initio* structure prediction of these sequences suggested a landscape of structural features, ranging from beta-sheet-based sequences to those possessing more alpha-helical-like character. Circular dichroism spectroscopy confirmed elements of the structure predictions for the majority of peptides. This analysis additionally uncovered that several peptides underwent secondary structure alterations upon reaction. These results suggest a broad sequence and structural landscape of  $S_NAr$  active peptides along with a potentially important feature of these biopolymers.

Received 14th July 2018,  
Accepted 24th July 2018

DOI: 10.1039/c8ob01678j

rsc.li/obc

## Introduction

Nature has evolved a host of protein-based reaction mechanisms to perform the chemical transformations that sustain life. In cases of convergent evolution, multiple sequence and structural protein families evolved to perform a common chemistry.<sup>1,2</sup> A well-known example of this convergence is the glycoside hydrolase group of enzymes.<sup>3</sup> Within the broad category of glycoside hydrolases are the cellulases which exist in over 10 different sequence-based families and possess distinct folds and may hydrolyse a range of substrates.<sup>4,5</sup> As another example, in the case of the various carbonic anhydrases, separate folds perform identical overall chemical reactions using the same substrates.<sup>6</sup>

In general, for a given chemical transformation performed by proteins, similar or drastically different mechanistic themes may exist. For instance, while the metal center in carbonic anhydrases ranges from iron and zinc to even cadmium, the use of a metal ion is a common theme and appears indispensable for this reaction.<sup>7,8</sup> In contrast, for the cleavage of an amide bond, a host of mechanisms have evolved. Some rely on direct amino acid-based nucleophiles (serine or cysteine for example) while still others leverage metal ions or residues to activate water for bond cleavage.<sup>9–11</sup> Therefore, when considering an abiotic reaction of interest, it is unclear whether similar

or different themes will emerge in a population of functional biopolymers.

Significant efforts have been devoted to identifying peptides capable of reacting with small molecules.<sup>12,13</sup> Much of the focus on discovering reactive sequences has been on leveraging selection and screening based approaches.<sup>14–19</sup> Focusing on perfluoroaromatic-based nucleophilic aromatic substitution ( $S_NAr$ ) reactions, two separate functional peptides have been reported. The first, termed the ‘ $\pi$ -clamp’ is a four-residue peptide (FCPF),<sup>14</sup> while the other ‘MP01’ is 29-residues in length, originated from an mRNA display selection and displayed no obvious similarities to the  $\pi$ -clamp aside from the use of an active site cysteine.<sup>15</sup>

The selection used to discover MP01 assayed a large, predominantly randomized library of ~30-amino-acid long peptides for  $S_NAr$  activity. Five rounds of selection were performed and followed by high-throughput sequencing, revealing a predominantly unconverged landscape with millions of unique sequences. The primary isolate, MP01, significantly stood out from the majority of the sequences and was thus studied. This selection, however, presented a large, diverse and uncharacterized landscape of other potentially reactive sequences that were only partially enriched.

Here, we probed what features emerged from the aforementioned selection by studying a host of the discovered midsized peptides. In particular, we investigated whether multiple routes to reactivity were possible—from primary amino acid sequence to structural features—and if common mechanistic themes occurred. Using chemical synthesis, structure prediction and circular dichroism (CD) spectroscopy, we uncovered several routes to  $S_NAr$  reactivity with disparate reaction rates.

Department of Chemistry, Massachusetts Institute of Technology,  
77 Massachusetts Avenue, Cambridge, MA, 02139, USA. E-mail: blp@mit.edu

†Electronic supplementary information (ESI) available. See DOI: 10.1039/C8OB01678j



This work found that there are many mixed alpha-helix/random coil sequences in addition to reactive beta-sheet peptides. Furthermore, many peptides underwent secondary structure alterations upon reaction with the perfluoroaromatic probe. These results may suggest that while there are several different solutions to the problem of reactivity in the space of mid-sized peptides, common themes may still emerge.

## Results and discussion

### The sequence landscape is diverse

The sequence space of peptides (referred to as MPs) outside of the previously characterized isolate (MP01) showed minimal similarity and low sequence counts (Table 1).<sup>15</sup> In this diverse set of MPs, the proposed reactive cysteine was found throughout the length of the sequence—from more N-terminal placements to C-terminal locations—with the majority found in a central location due to the initial library biasing. Peptides appeared with as few as two counts in the high-throughput sequencing to 30 for MP03 (one count corresponds to a single observation of the complete sequence). The majority appeared at or below six counts. As with MP01, many of the sequences did not possess the full 30 amino acid library region (only 11 out of 26 sequences did).<sup>‡</sup> No major similarities between sequences were observed in terms of long sequence motifs and only two sequences contained the FCPF motif that was initially doped into the library (MP04 and 27). However, there were several related sequences like FCPI (MP03), WCPF (MP05) and FCPS (MP06). Notably, this set of peptides contained two sequences each with two cysteines (MP08) and another with three (MP05). Similarly, we included a sequence possessing a high sequence count, albeit lacking a cysteine (MP02).

Following chemical synthesis using an Automated Flow Peptide Synthesizer<sup>20</sup> and purification, several of the sequences required a guanidinium chloride-based refolding procedure (MP14, 16–19 and 25, ESI 2.3†). After this protocol most were readily soluble with the exception of MP14 which was marginally soluble. MP23 was dropped as it proved challenging to both cleanly synthesize and purify.

### The functional landscape is broad with reaction rate constants spanning two orders of magnitude

Each peptide was assayed for reactivity, revealing a broad functional landscape. Briefly, individual peptides (100 μM) were incubated with an excess of the perfluoroaromatic probe (500 μM) from the initial selection, referred to as the capture agent (CA) under reducing conditions (5 mM tris(2-carboxyethyl)phosphine, TCEP) at pH 7.4 and room temperature (Fig. 1, inset). Kinetic analysis of the reactions revealed that many peptides were capable of reactivity (Fig. 1). 15 sequences displayed low to moderate reactivity (0.02–0.27 M<sup>−1</sup> s<sup>−1</sup>) while

**Table 1** Amino acid sequences are diverse with differing high-throughput sequencing counts

Name	Sequence	Count
MP02 <sup>a</sup>	MPNYG PLSPS QPSHG YTFWM VPIWD NSHNA AG	25
MP03	MTSVT ASLLM HF <sup>c</sup> PI RAHIT NKPSF NPSPG	30
MP04	MRTPI KFAPR LSQPF <sup>c</sup> PFERK QHQLH LHPLI EG	21
MP05	MR <sup>c</sup> CA RRDRT LW <sup>c</sup> CPF DSPAW FLLSG <sup>c</sup> FCG	5
MP06	MGIVH NATRF PK <sup>c</sup> CF YSFIA TRQSK NSIRV SG	6
MP07	MKTFS SDQRF SK <sup>c</sup> CY RIYFH KLRQR NHNTS VG	6
MP08	MQHED <sup>c</sup> LTWY <sup>c</sup> GF <sup>c</sup> CS GNFTP RNLRG DSDG	9
MP09	MRYIY VLRLK SW <sup>c</sup> CG ASARS SPR <sup>c</sup> CA ATKLL G	10
MP10	MHNAY LRKSM RQ <sup>c</sup> LY FRRTL HNIHV MSHRG	6
MP11	MSTGD <sup>c</sup> CHIQH LRPFH GNIAW MRSNG MDG	4
MP12	MVKLS GKERT TRN <sup>c</sup> F FSFLA SRRTK KFNNL SG	4
MP13	MGHLH <sup>c</sup> CMVW RVNTS GHLS VGHKS YSSHK TG	4
MP14 <sup>b</sup>	MSSGT HYGIL NMVIR <sup>c</sup> HLVK NQTSQ MVVLT TG	2
MP15	MHHY <sup>c</sup> SKMKR RILMH YLFAN TMAHR DLGTN G	5
MP16 <sup>b</sup>	MHLRM IRYLN RRRHL <sup>c</sup> HVVE IRHGL FASRE IG	6
MP17 <sup>b</sup>	MNGHY <sup>c</sup> PCYLI TSVLV GATTG GVPVY VHLRV G	5
MP18 <sup>b</sup>	MRHYH <sup>c</sup> LCFQ GFRIF RRTVD SLEME ISLG	5
MP19 <sup>b</sup>	MHMHK TTSYR IRVLV GVDVY RMSHT <sup>c</sup> LTSS SG	5
MP20	MHTSL RSRAS SHSRG FGK <sup>c</sup> CA SIYTR YLKMFG	5
MP21	MGNK HRP <sup>c</sup> RL <sup>c</sup> LRLL PLLRG HLHRM FRERG	6
MP22	MRSTH QRVRR PRN <sup>c</sup> LC SFKHK WLKIF LKTLT G	5
MP23	MRFFA <sup>c</sup> H <sup>c</sup> LSI DSSYM WANFS VDRQT RG	6
MP24	MRRTP STRAR GRVFL LPTLR FFITL <sup>c</sup> LNLG	5
MP25 <sup>b</sup>	MNRIF HKRST YQMVF GR <sup>c</sup> SD FTSTY VHLIS YG	5
MP26	MTATS SSTSR G <sup>c</sup> CRPS TAQVV QRLRG LLLVV G	6
MP27	MLFMR LTKKT MATKF <sup>c</sup> PFRR KRKHR ERRAL YG	5

<sup>a</sup> Peptide synthesized with the full C-terminal constant region from the selection (−SGSLGHHHHHHRL). <sup>b</sup> Required refolding procedure.

eight possessed second order rate constants significantly higher than that of the previously characterized primary isolate from the selection (MP01, 185 sequencing counts, 0.29 M<sup>−1</sup> s<sup>−1</sup>).<sup>15</sup> With the exception of MP02 and 11, all of the sequences displayed rates greater than that of a previously characterized, random cysteine-containing peptide (0.007 M<sup>−1</sup> s<sup>−1</sup>).<sup>15</sup> While MP11 did not show reactivity on the time scale of the kinetics measurements, with longer incubations MP11 could minimally react, akin to the reactivity of an unselected cysteine containing peptide (Fig. S34B†).

For the most reactive peptides, no sequence similarities were observed and high conversion to a singly labeled product was possible in roughly 30 minutes (Fig. 2). These data support the notion that the absolute copy number from sequencing is not the best indicator of function as previously suggested.<sup>21</sup> We observed that sequences that showed up many times (MP01–04 for example) were not as reactive as some that only appeared a handful of times (MP13, 15 and 22 appeared 5 or fewer times).

The multi-cysteine containing peptides displayed varying levels of reactivity along with heterogeneous labeling states. Possessing two cysteines, MP08 and MP09 both showed single and double labeled products while MP05 was labeled between one and three times within eight hours (Fig. 2B and C). These sequences may have required longer reaction times and higher CA concentrations to drive the reaction to a fully labeled state. Additionally, MP05 and 09 were not soluble following reaction.

<sup>‡</sup> The starting Met and trailing Gly were part of the fixed region and are thus not included in the length analysis. Thus a 'full length' sequence would possess 32 residues in Table 1.



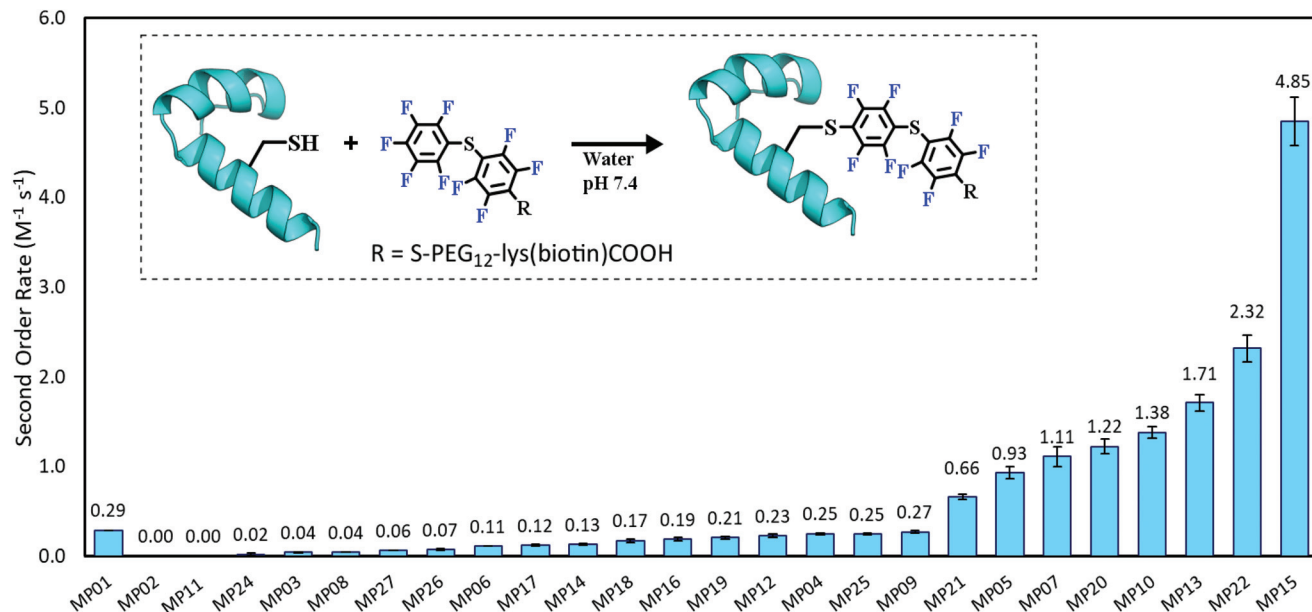


Fig. 1 The reactive peptide landscape is broad and contains several highly reactive sequences. Second order rate constants of MPs relative to the previously published MP01 data. Inset is a cartoon depiction of the reaction studied.

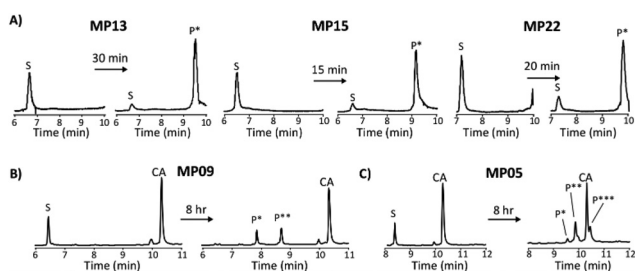


Fig. 2 Diverse reaction properties are present including rapid labeling and multiple labeling states. All reactions were analysed by liquid chromatography-mass spectrometry for which total ion chromatograms are shown. (A) Analysis of the top three sequences that can be labeled one time. (B) Analysis of an isolate exhibiting single and double labeling. (C) Analysis of an isolate exhibiting single, double and triple labeling. S – starting peptide, P\* – singly labeled peptide, P\*\* – doubly labeled peptide, P\*\*\* – triply labeled peptide.

### The reactive peptides exist in a diverse structural landscape

Rosetta *ab initio* structure prediction<sup>22,23</sup> and CD spectroscopy suggested a diverse structural landscape in which both alpha-helical and beta-sheet peptides existed. For the Rosetta analysis, the presented structures were the best representative structures of the major structural families (by percent size of the total population) determined by having both a low energy but also low in-family root-mean-square deviation. This suggested the structure to be a reasonable representation of the family.

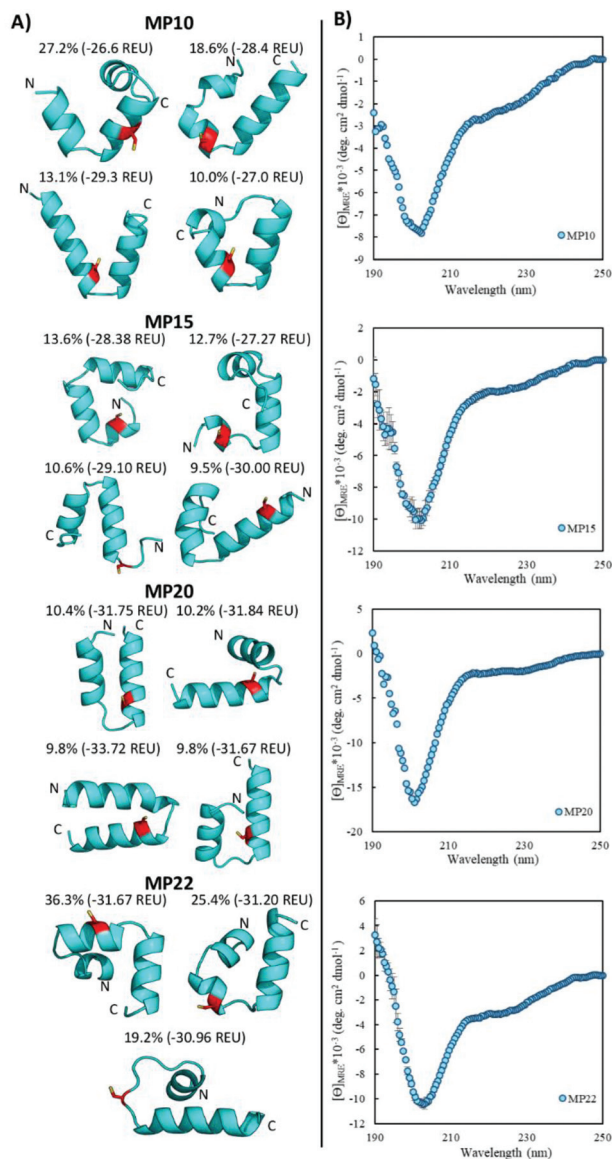
Structure prediction was used to suggest general topologies capable of performing the  $S_NAr$  chemistry. While short structured peptides exist,<sup>24</sup> we chose this modeling paradigm because peptides in this size range often need to be specifi-

cally designed (typically with cyclization or disulfide bonds) for structural stability.<sup>25,26</sup> Additionally, cluster analysis suggested that several structural families may be important. This typically occurred for the predicted helical peptides, where for a given sequence, the structural landscape contained families of similar population percentages and comparable energies. For such sequences, the actual structure in solution is likely an ensemble of these states and not a single conformation as one structure would suggest. In light of these observations, and without additional experimental structural data, we analysed the structural landscape itself and do not present a single structure.

### Helical peptides exist and display partial random coil elements

Of the sequences studied, fifteen were predicted to primarily possess helical components (MP03–5, 7–10, 12, 15, 20–22, 24, 26 and 27, Fig. 3A and ESI 3.5†). Four out of the top five most reactive peptides came from this set of sequences, all of which contained a single cysteine. For each of these top sequences, several key structural families were observed that appeared unique for each sequence. For a given peptide, some families displayed similar elements. As an example, in the case of MP10, three of the representative structures suggested a common cysteine placement (Fig. 3A). Across all of the sequences and structures, several structural themes regarding the placement of the active site cysteine emerged; the two most notable being that the cysteine was often observed near the N-terminus of an alpha-helix (MP07–9, 12, 15, 20 and 21) and that it is commonly seen in loop regions (MP03–5, 8, 26 and 27 for example). The placement of the cysteine near the N-terminus of an alpha-helix may contribute to elevated reac-

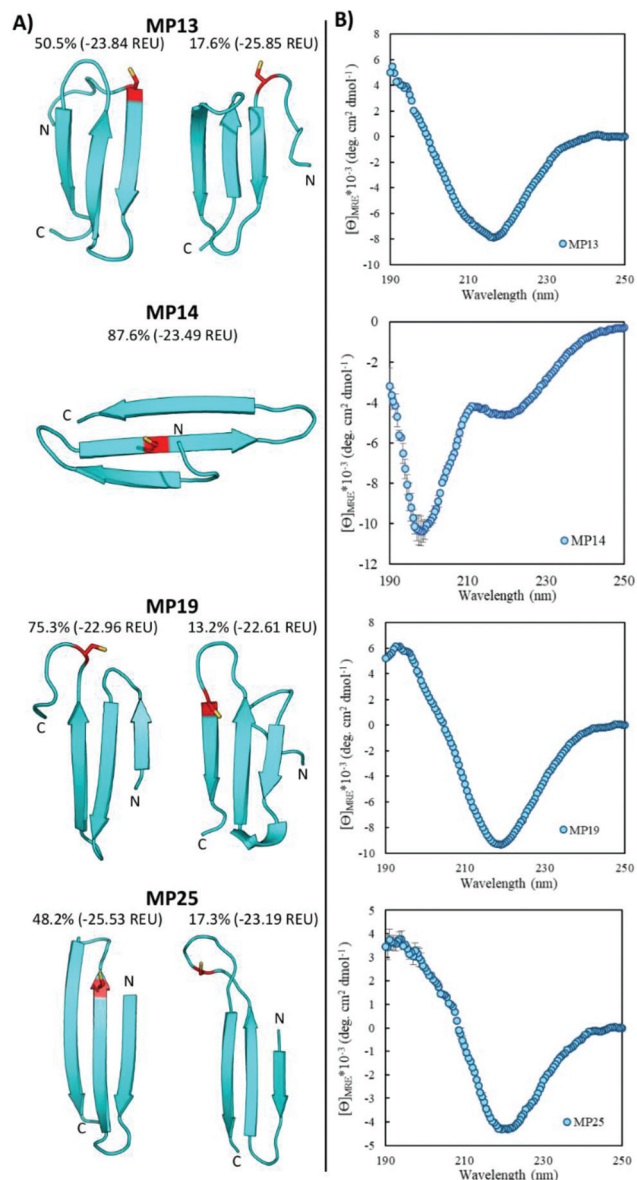




**Fig. 3** Predicted helical peptides exhibit several structural families with significant coil-like structural features. (A) Representative structures of the major structural families below the family size (as a percentage) and energy of the representative structure in Rosetta energy units (REU). Families larger than 9% are shown with the cysteine in red. N- and C-termini are labeled. (B) CD spectra of select predicted helical MPs. All spectra were measured using 50  $\mu\text{M}$  peptide in 10 mM phosphate buffer and 1 mM TCEP at pH 7.4 and room temperature.

tivity due to the macromolecular dipole induced by the helix as has been suggested.<sup>27</sup> However, these are not the only predicted locations, as placement near the C-terminus of a helix was sometimes observed.

CD spectroscopy revealed that the majority of the predicted helical peptides displayed both coil and helix-like secondary structures. This suggested that they either adopted a defined structure with significant random coil elements or did not exist with a long lived, defined helical structure. In line with our structural prediction analysis, we believe the lack of a



**Fig. 4** Three-stranded beta-sheet peptides are predicted with predominantly beta-sheet CD characteristics. (A) Representative structures of the major structural families below the family size (as a percentage) and energy of the representative structure in REU. The active cysteine is shown in red. N- and C-termini are labeled. (B) CD characterization of select peptides. All CD spectra were measured using 50  $\mu\text{M}$  peptide in 10 mM phosphate buffer and 1 mM TCEP at pH 7.4 and room temperature.

defined structure to be a more plausible explanation. We note that while many of the representative (predicted) structures display significant structural elements, structure in general may have been over stabilized, perhaps due to the scoring function or the large 9-mer fragments used in the prediction protocol. Finally, we find it pertinent to mention that MP24 displayed a predominantly beta-sheet like secondary structure, in contrast to the predicted helical structure. This may suggest that the structure prediction over-stabilized helical peptides or



that MP24 was in an aggregated state (which might be the cause of its low reactivity).

### Beta-sheet structures exist in the landscape of reactive peptides

Pointing to the diversity of structures able to undergo  $S_NAr$  reactions, several beta-sheet-based peptides were discovered. A total of seven sequences were predicted to fall into this category (MP11, 13, 14, 17–19, 25, Fig. 4 and ESI 3.5†). One of these peptides displayed significant reactivity (MP13), arriving at number three in the list of most reactive sequences with a rate constant of  $1.71\text{ M}^{-1}\text{ s}^{-1}$ . The majority of other beta-sheet predicted peptides displayed lower levels of reactivity, with MP25 being the next fastest at  $0.25\text{ M}^{-1}\text{ s}^{-1}$ . Perhaps the most common element of this class of peptide was the observation of three-stranded beta-sheets in which the active site cysteine was seen closer to or in one of the loop regions. The prime exception to this was MP14 in which the cysteine was located in the center of the middle beta-strand; however, it was one of the least reactive beta-sheet peptides. The beta-sheet peptides in general also possessed primary structural families that were represented at much higher percentages than families seen in the helical peptides (50.5% and 75.3% for the main families of MP13 and MP19 respectively).

In addition to their predicted structural elements, the secondary structures seen for many of these peptides were predominantly beta-sheet-like with the characteristic minimum near 218 nm. Relative to the helical peptides, the secondary structural features seen in many of these beta-sheet sequences were more pronounced (Fig. 4, ESI 3.3 and 3.4†). However, not all of the peptides displayed only beta-sheet-like structure. Two of the peptides (MP11 and MP14) displayed significant random

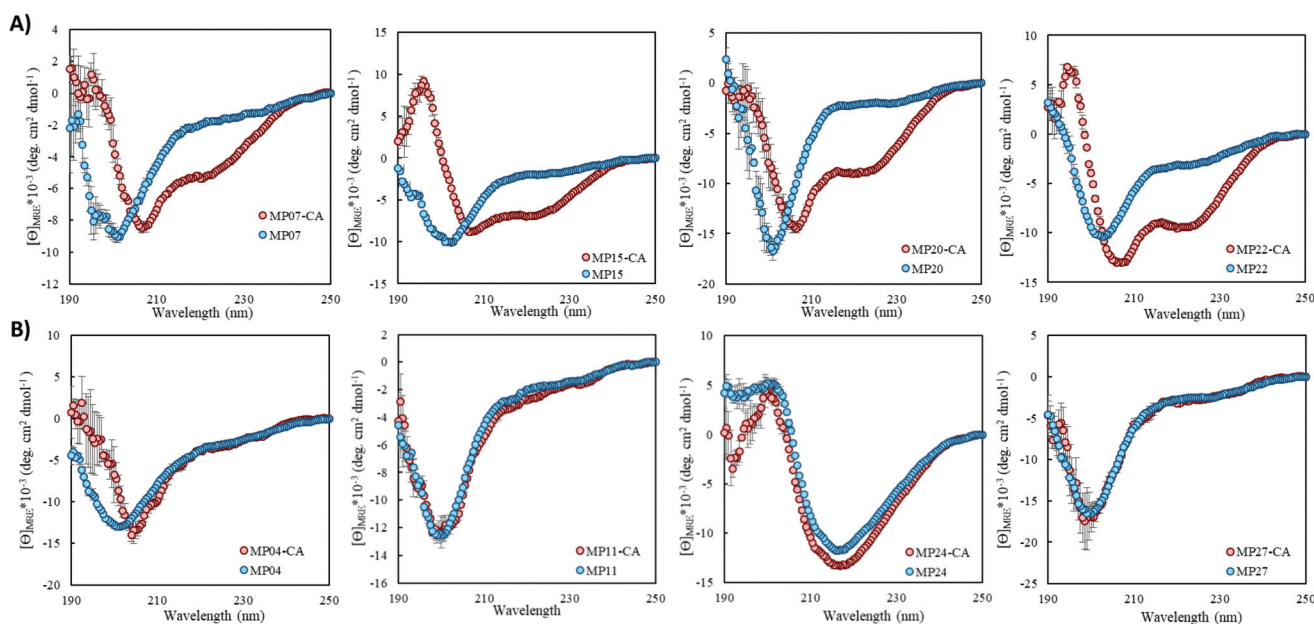
coil components in their secondary structure. As a point of interest, we note that the majority of the beta-sheet peptides required a chemical refolding protocol, while none of the alpha-helical peptides did.

### Structural alteration upon reaction is a common feature in $S_NAr$ active midsized peptides

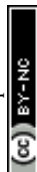
Structural alteration upon reaction emerged as a common feature. CD analysis of select MPs following an approximately 24 hour incubation with the CA revealed that many sequences underwent significant alterations to their secondary structure (Fig. 5A, ESI 3.3†). This feature was quite common in the predicted helical peptides, like MP07, 15 and 20, that exhibited varying degrees of structural alteration. In general, helical features became more pronounced following reaction with the CA. We note that many CA-labeled peptides were not soluble enough to perform CD analysis – particularly the beta-sheet peptides like MP13, 19 and 25. This may be the root cause as to why the observed trend is an increase of alpha-helicity.

There is a general trend (aside from MP05, 10 and 13 for which we do not have data due to solubility issues) that the most reactive peptides undergo structural alterations (MP07, 15 and 20–22). This observation may point to structural alterations being important for high levels of reactivity. However, it may simply be a common feature of reactive peptides in this size range, as sequences like MP08 and 26 also display alteration but are much less reactive.

We do not believe these alterations are due to the CA acting as simply a structure promoting additive. Several peptides displayed negligible change upon reaction with (MP04 and 27) or in the presence of CA (MP11 and 24, Fig. 5B). Additionally, the



**Fig. 5** Structural alteration is a common feature of MPs upon reaction with the CA. (A) CD spectra of select MPs showing structural alterations following CA reaction. (B) CD spectra of select MPs that do not show major structural alterations in the presence of CA. All peptides (50  $\mu\text{M}$ ) were incubated with CA (250  $\mu\text{M}$ ) in 10 mM phosphate buffer, 1 mM TCEP at pH 7.4 and room temperature for approximately 24 hours.



concentrations of CA used (250  $\mu\text{M}$ ) are lower than those used with agents like trifluoroethanol or trimethylamine *N*-oxide to impart structural alterations (commonly used in the mM–M range).<sup>28</sup>

## Experimental

All materials and methods are outlined in detail in the ESI.† Key methods include peptide synthesis and handling, kinetics measurements, CD spectroscopy and structure prediction.

## Conclusions

Three main findings have come out of this work. First, by studying a portion of the selected sequences, we suggest that there are potentially hundreds of reactive peptides in a library of  $10^{13}$  members. Second, the peptides in this subspace spanned diverse primary sequences, secondary structural elements and perhaps tertiary features that were capable of performing the  $\text{S}_{\text{N}}\text{Ar}$  reaction with rates enhanced relative to unselected peptides. The final observation is that structural alterations mediated by or in response to reaction with a small molecule is a common feature of these peptides.

Our experiments demonstrate that the landscape of  $\text{S}_{\text{N}}\text{Ar}$  active peptides is broad. Not only is reactivity readily achievable, but high levels of reactivity are possible, evidenced by sequences like MP13, 15 and 22. Even among these more reactive sequences, differences still emerge in terms of structural features, akin to the diversity of structures seen in enzymes. This work demonstrated that peptides from both major secondary structural families ( $\alpha$ -helices and  $\beta$ -sheets) are capable of rapid reactivity. Expanding from here and with additional engineering, the multi-cysteine peptides (MP05 and 09 for instance) may enable fusion proteins to be labeled a desired number of times in a kinetically-controlled biorthogonal manner. Looking forward, we believe there may yet be other, highly reactive sequences in this space. Additional experiments will more fully characterize the breadth of sequences, structures and functions.

The frequent observation of CA-mediated structural alterations is a notable property emergent from the selection. It may even begin to suggest a common feature used by (reactive) peptides in this space. In this regard, these peptides are reminiscent of natural proteins and peptides that undergo disorder-to-order transitions upon performing their function like the cyclin-dependent kinase inhibitor p21 or ACTR and CBP that significantly alter their structures upon binding.<sup>29,30</sup> However, it is still an open question whether or not this property is important for reactivity.

Taken together these results portray a rich and dynamic landscape of functional biomaterials. Additional investigations are necessary and may reveal common routes to high reactivity as well as general design rules to guide future reactive peptide development.

## Conflicts of interest

There are no conflicts of interest to declare.

## Acknowledgements

We thank A. Mijalis, J. Wolfe and A. Loftis for critical editing. We thank the Massachusetts Green High Performance Computing Center and the Commonwealth Computational Cloud for Data Driven Biology. The Biophysical Instrumentation Facility for the Study of Complex Macromolecular Systems (NSF-0070319) is gratefully acknowledged. E. D. E. was supported by an NSF graduate research fellowship (#112237) and then the Martin Family Society of Fellows for Sustainability. DARPA (Award #023504-001) supported B. L. P.

## Notes and references

- 1 H. Hegyi and M. Gerstein, *J. Mol. Biol.*, 1999, **288**, 147–164.
- 2 A. E. Todd, C. A. Orengo and J. M. Thornton, *J. Mol. Biol.*, 2001, **307**, 1113–1143.
- 3 G. Davies and B. Henrissat, *Structure*, 1995, **3**, 853–859.
- 4 V. Lombard, H. Golaconda Ramulu, E. Drula, P. M. Coutinho and B. Henrissat, *Nucleic Acids Res.*, 2014, **42**, D490–D495.
- 5 J. L. A. Brás, A. Cartmell, A. L. M. Carvalho, G. Verzé, E. A. Bayer, Y. Vazana, M. A. S. Correia, J. A. M. Prates, S. Ratnaparkhe, A. B. Boraston, M. J. Romão, C. M. G. A. Fontes and H. J. Gilbert, *Proc. Natl. Acad. Sci. U. S. A.*, 2011, **108**, 5237–5242.
- 6 C. T. Supuran, *Biochem. J.*, 2016, **473**, 2023–2032.
- 7 J. G. Ferry, *Biochim. Biophys. Acta, Proteins Proteomics*, 2010, **1804**, 374–381.
- 8 Y. Xu, L. Feng, P. D. Jeffrey, Y. Shi and F. M. M. Morel, *Nature*, 2008, **452**, 56–61.
- 9 L. Hedstrom, *Chem. Rev.*, 2002, **102**, 4501–4524.
- 10 N. D. Rawlings and A. J. Barrett, in *Methods in Enzymology*, Academic Press, 1995, vol. 248, pp. 183–228.
- 11 K. Suguna, E. A. Padlan, C. W. Smith, W. D. Carlson and D. R. Davies, *Proc. Natl. Acad. Sci. U. S. A.*, 1987, **84**, 7009–7013.
- 12 B. A. Griffin, S. R. Adams and R. Y. Tsien, *Science*, 1998, **281**, 269–272.
- 13 S. R. Adams, R. E. Campbell, L. A. Gross, B. R. Martin, G. K. Walkup, Y. Yao, J. Llopis and R. Y. Tsien, *J. Am. Chem. Soc.*, 2002, **124**, 6063–6076.
- 14 C. Zhang, M. Welborn, T. Zhu, N. J. Yang, M. S. Santos, T. Van Voorhis and B. L. Pentelute, *Nat. Chem.*, 2016, **8**, 120–128.
- 15 E. D. Evans and B. L. Pentelute, *ACS Chem. Biol.*, 2018, **13**, 527–532.
- 16 R. K. V. Lim, N. Li, C. P. Ramil and Q. Lin, *ACS Chem. Biol.*, 2014, **9**, 2139–2148.



- 17 T. Kawakami, K. Ogawa, N. Goshima and T. Natsume, *Chem. Biol.*, 2015, **22**, 1671–1679.
- 18 C. P. Ramil, P. An, Z. Yu and Q. Lin, *J. Am. Chem. Soc.*, 2016, **138**, 5499–5502.
- 19 F. Tanaka, R. Fuller, L. Asawapornmongkol, A. Warsinke, S. Gobuty and C. F. Barbas III, *Bioconjugate Chem.*, 2007, **18**, 1318–1324.
- 20 A. J. Mijalis, D. A. Thomas III, M. D. Simon, A. Adamo, R. Beaumont, K. F. Jensen and B. L. Pentelute, *Nat. Chem. Biol.*, 2017, **13**, 464–466.
- 21 M. Cho, Y. Xiao, J. Nie, R. Stewart, A. T. Csordas, S. S. Oh, J. A. Thomson and H. T. Soh, *Proc. Natl. Acad. Sci. U. S. A.*, 2010, **107**, 15373–15378.
- 22 P. Bradley, K. M. S. Misura and D. Baker, *Science*, 2005, **309**, 1868–1871.
- 23 K. T. Simons, C. Kooperberg, E. Huang and D. Baker, *J. Mol. Biol.*, 1997, **268**, 209–225.
- 24 A. G. Cochran, N. J. Skelton and M. A. Starovasnik, *Proc. Natl. Acad. Sci. U. S. A.*, 2001, **98**, 5578–5583.
- 25 G. Bhardwaj, V. K. Mulligan, C. D. Bahl, J. M. Gilmore, P. J. Harvey, O. Cheneval, G. W. Buchko, S. V. S. R. K. Pulavarti, Q. Kaas, A. Eletsky, P.-S. Huang, W. A. Johnsen, P. J. Greisen, G. J. Rocklin, Y. Song, T. W. Linsky, A. Watkins, S. A. Rettie, X. Xu, L. P. Carter, R. Bonneau, J. M. Olson, E. Coutsiyas, C. E. Correnti, T. Szyperski, D. J. Craik and D. Baker, *Nature*, 2016, **538**, 329–335.
- 26 M. D. Struthers, R. P. Cheng and B. Imperiali, *Science*, 1996, **271**, 342–345.
- 27 W. G. J. Hol, P. T. van Duijnen and H. J. C. Berendsen, *Nature*, 1978, **273**, 443–446.
- 28 S. A. Celinski and J. M. Scholtz, *Protein Sci.*, 2002, **11**, 2048–2051.
- 29 R. W. Kriwacki, L. Hengst, L. Tennant, S. I. Reed and P. E. Wright, *Proc. Natl. Acad. Sci. U. S. A.*, 1996, **93**, 11504–11509.
- 30 S. J. Demarest, M. Martinez-Yamout, J. Chung, H. Chen, W. Xu, H. J. Dyson, R. M. Evans and P. E. Wright, *Nature*, 2002, **415**, 549–553.

