



Cite this: *Nanoscale*, 2015, 7, 19493

## Broadly tunable graphene plasmons using an ion-gel top gate with low control voltage†

Hai Hu,<sup>a</sup> Feng Zhai,<sup>b</sup> Debo Hu,<sup>a</sup> Zhenjun Li,<sup>a</sup> Bing Bai,<sup>a</sup> Xiaoxia Yang\*<sup>a</sup> and Qing Dai\*<sup>a</sup>

The electrostatic tunability of graphene is vital in the field of active plasmons and would be beneficial in tunable infrared and terahertz optical element applications. The key to realizing broad tunability is achieving high carrier densities in graphene. Here we use an ion-gel, currently one of the most efficient dielectrics with ultra-high capacitance, to realize broadly tunable graphene plasmons ( $\sim 1270 \text{ cm}^{-1}$ ) with low voltage modulation ( $\sim 4 \text{ V}$  shifted from the Dirac point). We further explore the coupling between graphene plasmons and the molecular vibration modes of the ion-gel, since strong plasmon–phonon coupling can split the plasmon resonance peak into multi-peaks and reduce their tunability. Our experiments demonstrate weak plasmon–phonon coupling in the graphene/ion-gel system, which has limited effects on plasmon properties. These properties make ion-gels an effective dielectric for broadly tunable graphene plasmonic devices, such as new optical modulators, filters and wavelength multiplexers.

Received 1st August 2015,  
Accepted 28th September 2015

DOI: 10.1039/c5nr05175d

www.rsc.org/nanoscale

### Introduction

Plasmons can be used to concentrate and manipulate light at the nanoscale which is substantially below the diffraction limit. Because of this unique ability, plasmons have been applied in subwavelength optics, metamaterials and chemical and biological sensors.<sup>1–3</sup> While traditional plasmonic materials (e.g. gold and silver) function at visible wavelengths, graphene plasmons are more fundamentally suited to manipulate photons in communication systems, security inspection and sensing applications as they can be tuned from near-infrared to terahertz.<sup>4–7</sup> Moreover, graphene plasmons have very low intrinsic damping rates, ultra-high electromagnetic field confinements, and a dynamic tunability which can be easily achieved by gating in an analogous manner to field effect transistors (FET).<sup>5–9</sup>

Based on these remarkable properties, a series of novel plasmonic devices, such as tunable modulators,<sup>10,11</sup> filters,<sup>12,13</sup> and detectors,<sup>14</sup> have been proposed recently. Development of a broadly tunable plasmonic device with low control voltage would further improve the practicability of these existing plasmonic devices. Enhancing the doping efficiency and carrier density of graphene is an important approach to implement this functionality. Optimizing the

electronic doping design with suitable dielectric materials to enhance the doping efficiency and carrier density of graphene seems to be a promising approach. There are three main types of dielectric materials which are widely used in current electrical tunable graphene devices. Conventional  $\text{SiO}_2$  dielectrics are beneficial for identifying and processing graphene flakes,<sup>15,16</sup> but only give graphene carrier densities on the order of  $10^{13} \text{ cm}^{-2}$ .<sup>17–19</sup> High- $\kappa$  dielectrics ( $1\text{--}2 \mu\text{F cm}^{-2}$ ), such as  $\text{ZrO}_2$ ,  $\text{Al}_2\text{O}_3$ , and  $\text{HfO}_2$ , have also been used to obtain high doping,<sup>20–25</sup> but their applications have been limited due to the necessity of high growth temperatures and the complexity of processing conditions.<sup>26</sup> An ion-gel is one of the most efficient dielectric materials with a very high gate capacitance of about  $10 \mu\text{F cm}^{-2}$ , which is  $\sim 800$  times larger than the widely used  $300 \text{ nm SiO}_2$  dielectric material ( $12 \text{ nF cm}^{-2}$ ).<sup>15,18,27</sup> Ion-gels can be employed to shift the Fermi level ( $E_F$ ) of graphene significantly from about  $-1.5$  to  $2.5 \text{ eV}$  by applying a small top gate voltage ( $\sim 10 \text{ V}$ ). This  $E_F$  shift corresponds to carrier densities ranging from about  $-1$  to  $2.5 \times 10^{14} \text{ cm}^{-2}$ .<sup>27</sup> Ion-gel gate dielectric materials are also transparent, and have good mechanical flexibility, fatigue stability, as well as excellent electrochemical and thermal stability,<sup>28–30</sup> which makes them compatible with tunable graphene plasmonic devices on various substrates, such as  $\text{SiO}_2$ <sup>12,31</sup> and  $\text{In}_2\text{O}_3/\text{BaF}_2$ .<sup>32</sup> F. Wang's group reported tunable terahertz graphene plasmonics from about  $60$  to  $200 \text{ cm}^{-1}$ . However, the tunability of graphene plasmons in the mid-IR spectrum range and the influence of ion-gel phonons on them are still unclear. The plasmon–phonon coupling can change graphene plasmons significantly, such as their dispersion, tunability and lifetime,

<sup>a</sup>National Center for Nanoscience and technology, Beijing 100190, China.

E-mail: daiq@nanoctr.cn, yangxx@nanoctr.cn; Tel: +86-010-82545720

<sup>b</sup>Department of Physics, Zhejiang Normal University, Jinhua 321004, China

†Electronic supplementary information (ESI) available. See DOI: 10.1039/c5nr05175d

thus studying the plasmonics of a graphene/ion-gel system in the mid-IR region is of fundamental importance. For example, the strong plasmon-phonon couplings in graphene/SiO<sub>2</sub> and graphene/*h*-BN systems split the plasmon resonance peak into multi-peaks and dramatically change their frequencies, tunability and lifetimes.<sup>33</sup>

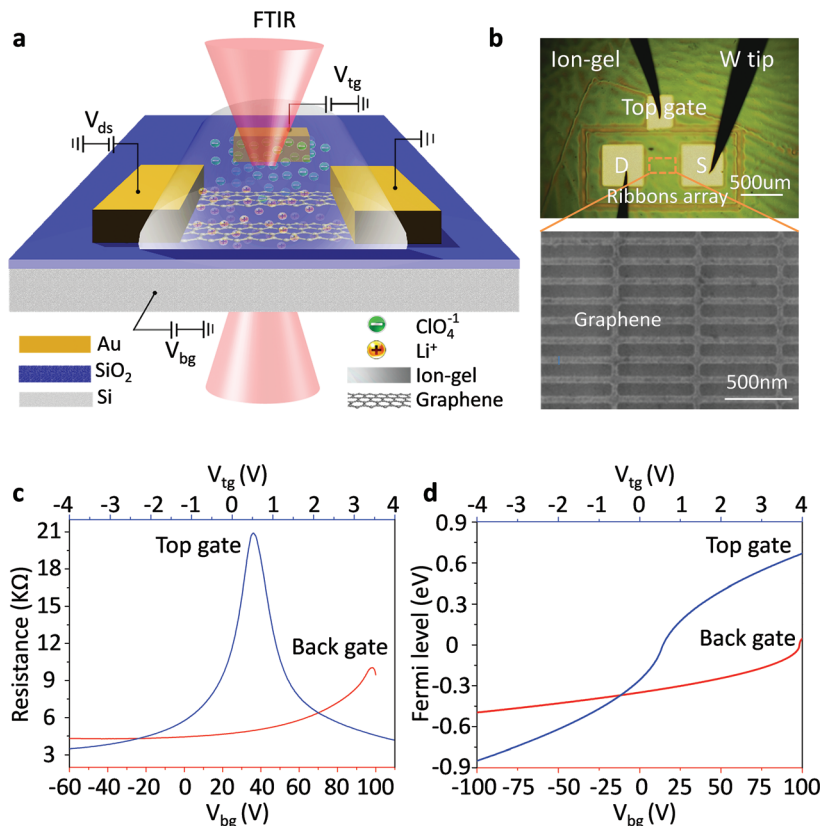
In this work, a broadly tunable graphene plasmon shift of  $\sim 1270\text{ cm}^{-1}$  (corresponding to  $\sim 0.88\text{ eV}$  shift of  $E_F$ ) was realized through a low voltage modulation (4 V shift from the Dirac point) by using a conveniently spin-coated ion-gel thin film. In contrast, the SiO<sub>2</sub> back gate led to a  $379\text{ cm}^{-1}$  shift with nearly 200 V gate voltage modulation on the same device. We further explored the coupling between graphene plasmons and the molecular vibration modes of the ion-gel, since strong plasmon-phonon coupling can split the plasmon resonance peak into multi-peaks and reduce their tunability. Our experiments demonstrate weak plasmon-phonon coupling in the graphene/ion-gel system. Our results also show that an ion-gel has limited effects on graphene plasmon lifetimes. These results indicate that an ion-gel thin film is an effective dielectric for broadly tunable graphene plasmon devices with limited phonon-plasmon coupling influence.

## Results and discussion

### Device fabrication and experimental set-up

Graphene nanoribbon arrays were used to excite localized graphene plasmons. Fig. 1a shows a schematic view of the measurement set-up. First, a graphene sheet was transferred onto a SiO<sub>2</sub>/Si substrate and then patterned into electrically continuous nanoribbon arrays with a gap-to-width ratio of 1 : 1 (Fig. 1b). Two Cr/Au electrodes were deposited on the graphene for electrical characterization and a third one was deposited on the outside of the graphene as an in-plane top-gate electrode (Fig. 1b). This design is used to avoid metal atoms penetrating into the ion-gel film which can occur when the top electrode is made by evaporating and to prevent external contamination.<sup>34</sup> An ion gel film was spin coated onto the device as the top-gate dielectric while a SiO<sub>2</sub> film was used as the back-gate dielectric with highly doped Si as the back gate.

Using an ion-gel top gate can shift the Fermi level of graphene in a wide range with small gate voltages because of the high capacitance of the ion-gel. This high capacitance results from the nanometer thick (1–5 nm) Debye layer formed at the ion-gel/graphene interface.<sup>35–38</sup> As illustrated in Fig. 1a, with a



**Fig. 1** (a) Schematic of the experiment for measuring the extinction spectra of the ion-gel top-gated graphene nanoribbon array by FTIR microscopy. Highly doped Si and SiO<sub>2</sub> were used as the back gate and dielectric in the same device for comparison. (b) Top: Optical micrograph of a fabricated device coated with the ion-gel film (green waves). Bottom: Scanning electron microscopy (SEM) image of a graphene nanoribbon array with a ribbon width of  $\sim 65\text{ nm}$  and a gap-to-ribbon ratio of 1 : 1. (c) Representative transfer characteristics of the device controlled by the top gate voltage  $V_{tg}$  (blue curve) and the back gate voltage  $V_{bg}$  (red curve), respectively. (d) The dependence of the graphene Fermi levels on  $V_{tg}$  and  $V_{bg}$ , respectively.

positive gate bias, negative ions ( $\text{ClO}_4^-$ ) in the ion-gel move toward and accumulate near the top-gate electrode while the positive ions ( $\text{Li}^+$ ) accumulate on the surface of the graphene channel. The accumulated  $\text{Li}^+$  ions create a positive electric field, which draws electrons into the graphene channel. When a negative voltage is applied, holes are injected into graphene. Thus, by using the ion-gel top gate, we were able to obtain highly doped graphene nanoribbons with actively tunable carrier densities *via* small gate voltages. In addition, the applied gate voltages should be limited in the range from  $-5$  to  $5$  V in order to prevent unwanted chemical reactions.<sup>39</sup>

The plasmonic properties of graphene at different Fermi levels  $E_F$  were characterized by using Fourier transform infrared microscopy (FTIR). First, the extinction spectra ( $T(\text{CNP})$ ) of the graphene nanoribbon array at the charge neutral point (CNP) (*i.e.*  $E_F = 0$ ) were detected. Then we changed  $E_F$  of the graphene nanoribbon array, and measured its extinction spectra  $T(E_F)$ . The electromagnetic response of the graphene plasmon at  $E_F$  was obtained from the extinction spectrum  $T$ , where  $T = 1 - T(E_F)/T(\text{CNP})$ . Since the background IR extinction was all cancelled out, the peaks in the as-obtained extinction spectrum resulted from the plasmon resonances which were strongly dependent on the electronic properties of the graphene.

### Electrical characteristics

Gate voltage-dependent resistance properties of the graphene devices were detected by applying a top gate and a back gate, respectively, as shown in Fig. 1c. The CNP appears at 98 V by sweeping the back-gate voltage from  $-100$  to  $100$  V (blue curve) while it appears at 0.53 V in the transfer characteristics of the same graphene sample with an ion-gel top-gate (red curve). The device was found to be a typical ambipolar FET as manifested by the 'V' shape of the resistance dependence on the gate voltage. The graphene at zero gate voltage was found to be highly p-type doped. This can be attributed to the absorption of impurities (*e.g.* water molecules)<sup>40</sup> and the effect of surface dangling bonds of the  $\text{SiO}_2$  substrate.<sup>41,42</sup> In addition, the maximum resistivity was found to increase after the ion-gel was spin coated. This phenomenon likely originated from the additional impurities introduced into the graphene by the ion-gel.<sup>35</sup>

From the determined transfer characteristics, and the capacitance and thickness of the dielectric, we calculated the carrier concentration and  $E_F$  of the graphene using a standard parallel plate capacitor model (see details below). For the  $\text{SiO}_2$  thin film, using a relative dielectric constant of 3.9 and a thickness of 300 nm, the capacitance was calculated as  $0.0121 \mu\text{F cm}^{-2}$ .<sup>15</sup> The capacitance of the ion-gel dielectric was calculated as  $2.42 \mu\text{F cm}^{-2}$  from a relationship that the shift in the back-gate voltage at CNP ( $V_{\text{bg, CNP}}$ ) is linearly dependent on the change of the applied top-gate voltage ( $V_{\text{tg}}$ ) and  $\frac{C_{\text{tg}}}{C_{\text{bg}}} = -\frac{\Delta V_{\text{bg, CNP}}}{\Delta V_{\text{tg}}}$  (see Fig. S3 in the ESI†). Based on the value of capacitance, the dielectric constant of the ion-gel can be

calculated by using the conventional capacitance equation,  $C = \frac{\epsilon}{4\pi kt}$ , where  $k$  is the static dielectric constant and  $t$  is the thickness of the Debye layer. Assuming a Debye length of 2 nm,<sup>30</sup> we obtained the dielectric constant as 5.5 for the ion-gel composed of  $\text{LiClO}_4$  and PEO, which is consistent with previous reported values of PEO ( $\sim 5$ ).<sup>43</sup>

For both the top-gated and back-gated graphene FET, the dependence of the carrier density on the gate voltage satisfies the equation:<sup>26,27,35</sup>

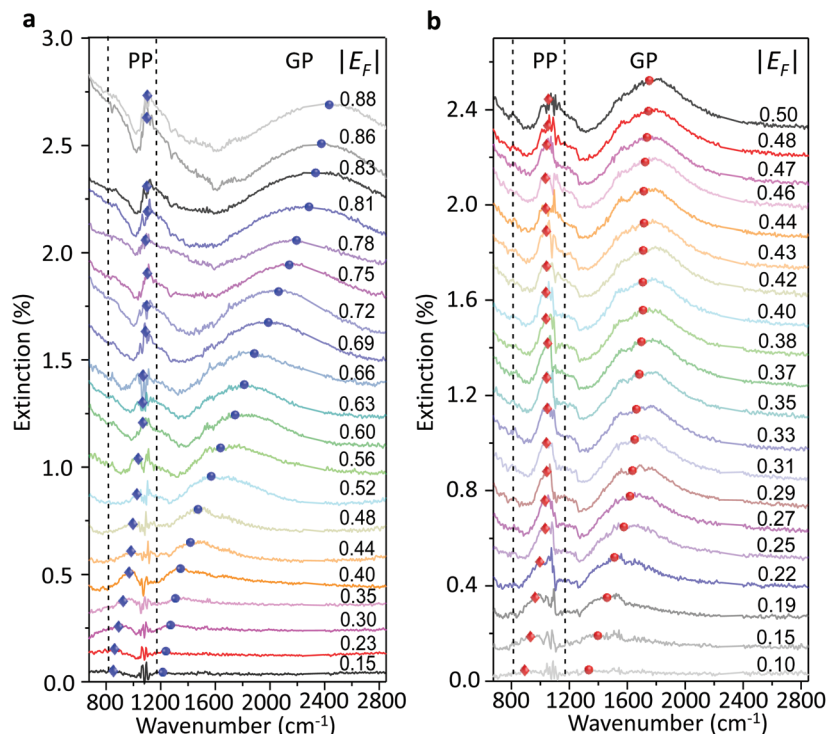
$$V_g - V_{\text{CNP}} = \frac{\hbar|v_F|\sqrt{\pi n}}{e} + \frac{ne}{C_g}$$

where  $V_g$  is the gate voltage,  $V_{\text{CNP}}$  is the charge neutrality point voltage,  $v_F = 1.1 \times 10^6 \text{ m s}^{-1}$  is the Fermi velocity,<sup>44</sup>  $n$  is the carrier density and  $C_g$  is the capacitance of the gate dielectric. Combined with the relation between  $E_F$  and the carrier density of graphene  $E_F = \hbar|v_F|\sqrt{\pi n}$ , we obtained the relation between  $E_F$  and the gate voltages (see the ESI†). As shown in Fig. 1d,  $E_F$  is plotted as a function of both the ion-gel top-gate voltage ( $V_{\text{tg}}$ ) and the  $\text{SiO}_2$  back-gate voltage ( $V_{\text{bg}}$ ). When the  $V_{\text{tg}}$  is tuned from  $-4$  to  $4$  V, the values of  $E_F$  shifts from about  $-0.94$  to  $0.81$  eV. This shift in  $E_F$  is much larger than the change made by the back gate, which is about  $-0.5$  to  $0.05$  eV with  $V_{\text{bg}}$  shifted from  $-100$  to  $100$  V.

### Plasmon resonance frequencies characteristics

The plasmonic properties of the as-prepared low voltage-controlled and broadly tunable mid-infrared graphene devices were experimentally characterized for performance. Because the electrical tunability of graphene is symmetric with respect to the CNP, we focused on the hole-doping regime for simplicity. Fig. 2a shows the extinction spectra of the graphene nanoribbon array at different  $E_F$  controlled by the ion-gel top gate. The extinction spectra of the same graphene nanoribbon array at different  $E_F$  controlled by the  $\text{SiO}_2$  back gate are used for comparison (Fig. 2b). In both the top-gated and back-gated strategies, there are two distinct resonance peaks in the extinction spectra, as indicated by diamonds and spheres in Fig. 2a and b. These peaks are ascribed to the coupling of graphene plasmons to two surface optical (SO) phonons of  $\text{SiO}_2$  at  $806 \text{ cm}^{-1}$  ( $\omega_{\text{sp1}}$ ) and  $1168 \text{ cm}^{-1}$  ( $\omega_{\text{sp2}}$ ), respectively.<sup>45,46</sup> In order to better compare the electrical tunability of graphene plasmons controlled by the ion-gel and  $\text{SiO}_2$ , we used narrow graphene ribbons ( $\sim 65$  nm) to reduce this obvious plasmon-phonon coupling by shifting the pristine plasmon resonance frequency of graphene to energies much higher than  $\omega_{\text{sp2}}$ . In most of these extinction spectra (except for the conditions at low Fermi levels), the first resonance peaks (diamonds) are phonon-like polaritons (PP) and the second ones (spheres) are graphene plasmon-like polaritons (GP), which are the main peaks in the extinction spectra.

The resonance frequency  $\omega_{\text{pl}}$  for pristine graphene plasmons is determined by  $E_F$  and the wave vector  $q$  *via* the equation  $\omega_{\text{pl}} = \sqrt{e^2 E_F q / (2\pi \hbar^2 \epsilon_0 \epsilon_r)}$ ,<sup>7,19,47</sup> where  $q = \pi/W$ . When  $q$  is fixed, the corresponding value of  $\omega_{\text{pl}}$  scales as  $E_F^{1/2}$ . For



**Fig. 2** (a) Extinction spectra ( $T = 1 - T(E_F)/T(\text{CNP})$ ) of the graphene nanoribbon array at various values of  $E_F$  controlled by the ion-gel top gate. (b) Extinction spectra of the same device at various  $E_F$  values controlled by the back gate. These spectra were characterized before the ion-gel film was coated on the device. The absorption peaks of  $\text{CO}_2$  (ranging from 2244 to 2395  $\text{cm}^{-1}$ ) in ambient air were replaced by straight lines.

the plasmon–phonon coupling system, when  $E_F$  of graphene increases, both the PP and the GP peaks gain intensity and shift to higher frequencies, as shown in Fig. 2. The plasmon resonance frequencies of the graphene device controlled by the ion-gel top gate are lower than those of the same device at the same  $E_F$  controlled by the  $\text{SiO}_2$  back gate (see ESI Fig. S4†). This is due to the different effective dielectric environments of graphene for these two cases as the environment determines the plasmon resonance frequencies *via*  $\omega \propto \varepsilon^{-1/2}$ . For the  $\text{SiO}_2$  back gate system (air/graphene/ $\text{SiO}_2$ ), the average dielectric environment  $\varepsilon_r = \frac{1}{2}(\varepsilon_{\text{SiO}_2} + \varepsilon_{\text{air}}) = 2.45$ , while for the ion-gel top gate system (ion-gel/graphene/ $\text{SiO}_2$ ),  $\varepsilon_r = \frac{1}{2}(\varepsilon_{\text{SiO}_2} + \varepsilon_{\text{ion-gel}}) = 4.67$ .

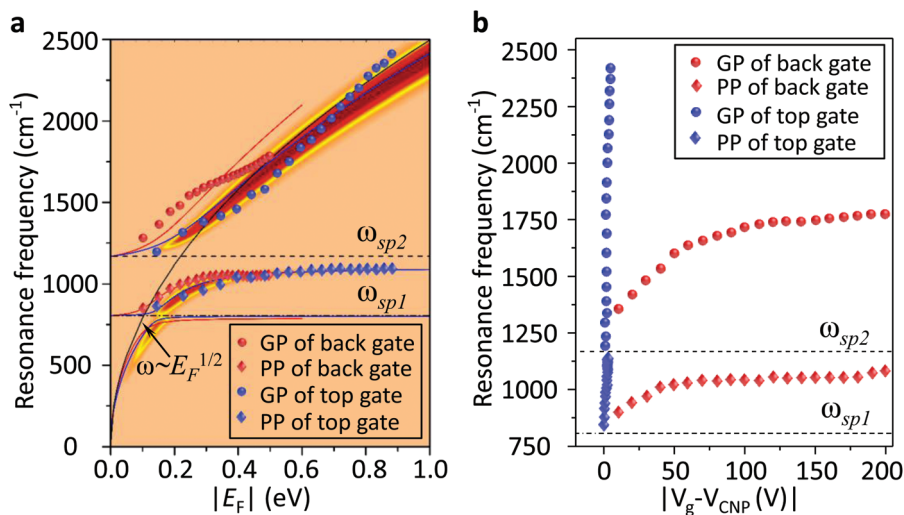
We used a generalized random phase approximation (RPA) theory to calculate the relationship between  $E_F$  and the graphene plasmon resonance frequency under the conditions of plasmon–phonon coupling.<sup>45,48–50</sup> Calculations were performed according to Yang *et al.*<sup>33</sup> Fig. 3a shows the calculated results for a graphene nanoribbon with 65 nm ribbon width at varying  $E_F$  as controlled by both the ion-gel dielectric top gate (blue lines) and the  $\text{SiO}_2$  back gate (red lines) alongside the experimental data (diamonds and spheres) extracted from the extinction spectra of Fig. 2a and b. The two-dimensional pseudo-colour background was calculated from the loss function of the graphene plasmons controlled with the ion-gel dielectric top gate. The simulation results are in excellent

agreement with our experimental results. The used Fröhlich-like coupling strength between plasmons and two SO phonons of  $\text{SiO}_2$  are presented in Fig. S5† (for the ion-gel top gate and for the  $\text{SiO}_2$  back gate). A small deviation between experimental and theoretical values mainly originates from the effect of the phonon–photon coupling of the  $\text{SiO}_2$  substrate and the calculation error of the ion-gel dielectric constant.

The plasmon resonance frequencies were plotted as a function of gate voltage shifted from CNP for both the  $\text{SiO}_2$  back gate (red) and ion-gel top gate (blue), respectively (Fig. 3b). The GP peak dramatically shifts from 1184 to 2455  $\text{cm}^{-1}$  ( $\Delta\omega = 1271 \text{ cm}^{-1}$ ) and the PP peak shifts from 842 to 1119  $\text{cm}^{-1}$  ( $\Delta\omega = 277 \text{ cm}^{-1}$ ) by adjusting  $V_{\text{tg}}$  to shift 4 V from CNP. In contrast, the GP peak shifts from 1374 to 1753  $\text{cm}^{-1}$  ( $\Delta\omega = 379 \text{ cm}^{-1}$ ) and the PP peak shifts from 906 to 1065  $\text{cm}^{-1}$  ( $\Delta\omega = 159 \text{ cm}^{-1}$ ) when  $V_{\text{bg}}$  shifts 200 V from CNP. The obtained shift of the GP peak by the ion-gel top gate is nearly 3.5 times as much as the value obtained by the  $\text{SiO}_2$  back gate while the applied voltage is just 1/50<sup>th</sup> of the latter.

### Plasmon–phonon coupling between graphene and the ion-gel

Graphene plasmons in the mid-infrared spectral range can interact strongly with phonons of the surrounding dielectrics, such as the SO phonons of  $\text{SiO}_2$  and the optical phonons of *h*-BN.<sup>33,51</sup> These strong plasmon–phonon couplings impede the electrostatic tunability of graphene plasmons significantly, especially at around the phonon energies. Thus, to explore



**Fig. 3** (a) The calculated resonance frequencies of PP and GP peaks as a function of  $E_F$  controlled by the top gate (blue curves) and the back gate (red curves), respectively. The two-dimensional pseudo-colour background is calculated from the loss function of graphene plasmons controlled by the ion-gel top gate. The experimental data of PP (diamonds) and GP (spheres) peaks extracted from Fig. 2a and b are also plotted. (b) The dependence of the resonance frequencies of PP and GP peaks on the voltage of  $V_{tg}$  and  $V_{bg}$  shifted from the corresponding CNP, respectively. Two SO phonons of  $\text{SiO}_2$  are indicated by dashed lines.

how the ion-gel phonons affect graphene plasmons is of great importance. As shown in Fig. 4a, the molecular vibration modes of the ion-gel can also interact with the graphene plasmon mode. However, the resulting shape is completely different from the case when  $\text{SiO}_2$  phonons couple with graphene plasmons. The  $\text{SiO}_2$  phonons split the plasmon resonance peak into well separated multi-peaks (the PP peaks and the GP peaks), while ion-gels only introduce several shallow dips appearing in the extinction spectra (Fig. 4a). The most obvious dips at 844, 1118, 1280 and 2885  $\text{cm}^{-1}$  are accompanied by other dips at 946, 974, 1061, 1154, 1233, 1344, 1363, 1469, and 1610  $\text{cm}^{-1}$ . These dips correspond to the respective IR group vibrations of PEO based on a comparison with the IR absorption peaks of the ion-gel thin film. In order to exhibit these plasmon–phonon coupling signals more clearly, zoom-in spectra of Fig. 4a in the range from 1000 to 1500  $\text{cm}^{-1}$  (between the two dashed lines) are shown in Fig. 4b. The strong C–O–C stretching mode at  $\sim 1118 \text{ cm}^{-1}$  of PEO molecules couples with graphene plasmons and slightly splits the PP peak.

When the plasmon mode interacts with a phonon mode, the coupling of external light to the phonon mode (*i.e.* phonon absorption) can be significantly enhanced due to the plasmon excitation *via* the near field enhancement.<sup>13</sup> The induced phonon resonances form polariton waves with an opposite phase with respect to the plasmon polaritons (Fig. 4c). These two waves with the same wavelength and opposite phase cause coherent destructive interference between them, which results in dips in the plasmon resonance extinction peaks. According to the interference theory of waves, the shape of the dips is mainly determined by the intensity of the induced phonon polariton waves, which determined the coupling strengths. For

the plasmon–phonon polaritons, the coupling strength is proportional to the energy splitting of the dip.<sup>52</sup> Fig. 4d presents the dependence of the energy splitting on the Fermi levels for both graphene/PEO and graphene/ $\text{SiO}_2$  systems. For both cases, the coupling strength increases coinciding with the shift of the Fermi level, that is the increasing electromagnetic field strength of graphene plasmons. For the graphene/PEO system, the coupling strength is much less than that of graphene/ $\text{SiO}_2$ . The latter enters a strong coupling regime as the splitting energies are much larger than the sum of the linewidths of graphene plasmons and  $\text{SiO}_2$  phonons. The former is a weak coupling system as the splitting energy is much less than the sum of the linewidths of graphene plasmons and the phonon resonance. This is because the densities of phonon modes in the ion-gel are much smaller than those in the  $\text{SiO}_2$  films due to a disordered arrangement of long PEO molecular chains (Fig. 4c), which is consistent with the coupling between plasmons and other molecular vibrations.<sup>53</sup> Thus, compared with conventional oxide dielectric materials, an ion-gel dielectric has very limited perturbation on the properties of graphene plasmons.

### Plasmon lifetime characteristics

The influence of the ion-gel dielectric on plasmon lifetimes, which is closely related to the plasmonic performance, was also studied. The plasmon lifetime  $T$  can be obtained *via*  $T = 2\hbar/\Gamma$  for the far field extinction spectra,<sup>33,54</sup> where  $\Gamma$  is the linewidth of the resonance peaks extracted by using Fano curve fitting (see the ESI and Fig. S6a†). We compared the graphene plasmon lifetimes of the graphene/ $\text{SiO}_2$  device before and after spin coating with the ion-gel top gate by plotting the lifetimes of the GP mode as a function of resonance frequencies



**Fig. 4** (a) Three selected extinction spectra of the graphene nanoribbon array at different  $E_F$  controlled by an ion-gel top gate with an enlarged view. The infrared extinction spectrum of the ion-gel film is shown for comparison. The arrow under a red square indicates the SO phonons of  $\text{SiO}_2$  at  $1168\text{ cm}^{-1}$ . The arrow under a blue triangle indicates the molecular resonance of PEO at  $2885\text{ cm}^{-1}$ . (b) The zoom-in spectra of (a) illustrating the coupling between graphene plasmons and the dipole moments of C–O–C stretching vibration of PEO molecules. The arrows indicate the IR active molecular resonances of PEO. (c) Schematic of the coupling mechanism of graphene plasmons and PEO optical phonons. (d) Dependence of energy splitting induced by plasmon–phonon coupling on Fermi levels. For the graphene/PEO case, the deepest dips at  $1118$  (blue triangles, up) and  $2885\text{ cm}^{-1}$  (blue triangles, down) are selected as instances.

(Fig. S6b†). In both the systems, the lifetimes dramatically decreased as the resonance frequencies increased. The lifetimes increased slightly at the same resonance frequency after adding the ion-gel film. This is because the ion-gel coating introduces additional scattering (such as charged impurities) to the graphene plasmons. The condition is very similar to that of free standing graphene transferred onto supporting substrates, whose carrier mobility decreases dramatically due to the introduced phonon scattering and charged impurity scattering. However, the mobility of graphene is less reduced by ion gels due to its weak phonon scattering.

## Conclusions

In conclusion, we achieved a low voltage-controlled and broadly tunable graphene plasmonic device with a top gate prepared by a simple and convenient method of using a spin-coated ion-gel thin film as a dielectric. The ion-gel top gate can shift the plasmon resonance frequency to  $1271\text{ cm}^{-1}$  which is nearly 3.5 times the value obtained by a  $\text{SiO}_2$  back gate ( $379\text{ cm}^{-1}$ ) while applying  $1/50^{\text{th}}$  of the voltage shifted from the CNP (e.g.  $4\text{ V}$  compared to the  $200\text{ V}$  required for a

$\text{SiO}_2$  back gate). In addition, unlike the graphene plasmon resonance peaks being split by the SO phonons of  $\text{SiO}_2$  and the optical phonons of  $h\text{-BN}$ , the coupling between a graphene plasmon and phonons of PEO is much weaker and has very limited effects on the plasmonic properties. On the whole, the ion-gel is an excellent dielectric for broadly tunable graphene plasmon devices.

## Experimental section

The device consists of a graphene sheet prepared by chemical vapor deposition (CVD) on copper foil which was transferred onto a  $\text{SiO}_2$  (300 nm)/Si substrate. The sample was identified to be a monolayer by using a micro-Raman microscope (Horiba JobinYvon, LabRAM HR800) before processing. The nanoribbon arrays were patterned using electron-beam lithography on graphene which was then etched away using oxygen plasma. The graphene nanoribbons were characterized by atomic force microscopy (s-SNOM, Neaspec) using tapping mode and SEM (Hitachi, S-4800). The source, drain and top gate electrodes of the device were made by e-beam lithography, followed by e-beam evaporation of 100 nm of gold and sub-

sequent lift-off in acetone. The ion-gel dielectric material was achieved by dissolving polyethylene oxide (PEO) and  $\text{LiClO}_4$  in methanol with a mass ratio of 1:0.12:40, as reported in previous work.<sup>27,35</sup> The compounded ion-liquid is then spun onto a graphene transistor at 5000 RPM, followed by baking at 60 °C to remove any residual methanol. The electrical transport properties were characterized with a semiconductor parameter analyzer (Agilent, 4294A).  $V_{\text{tg}}$  was applied by inserting a wolframium electrode within the polymer layer. The measurement set-up for the device consisted of an infrared microscope coupled to a Fourier-transform infrared spectrometer (ThermoFisher, Nicolet iN10), used in conjunction with a power source (Keithley 2612B). All the measurements were performed at room temperature and under an ambient atmosphere. The finite element method was used to simulate the plasmonic responses of the devices.

## Acknowledgements

This work was supported by the National Basic Research Program of China (Grant No. 2015CB932400), the National Natural Science Foundation of China (Grant No. 51372045, and No. 11174252) and the Bureau of International Cooperation, Chinese Academy of Sciences (121D11KYSB20130013).

## Notes and references

- Q. Bao and K. P. Loh, *ACS Nano*, 2012, **6**, 3677.
- T. Stauber, *J. Phys. Condens. Matter*, 2014, **26**, 123201.
- F. MinovKoppensich, D. Chang, S. Thongrattanasiri and F. García de Abajo, *Opt. Photonics News*, 2011, **22**, 36.
- T. Low and P. Avouris, *ACS Nano*, 2014, **8**, 1086.
- X. Luo, T. Qiu, W. Lu and Z. Ni, *Mater. Sci. Eng., R*, 2013, **74**, 351.
- M. Jablan, M. Soljacic and H. Buljan, *Proc. IEEE*, 2013, **101**, 1689.
- A. Grigorenko, M. Polini and K. Novoselov, *Nat. Photonics*, 2012, **6**, 749.
- F. J. Garcia de Abajo, *ACS Photonics*, 2014, **1**, 135.
- F. Bonaccorso, Z. Sun, T. Hasan and A. Ferrari, *Nat. Photonics*, 2010, **4**, 611.
- B. Sensale-Rodriguez, R. Yan, M. M. Kelly, T. Fang, K. Tahy, W. S. Hwang, D. Jena, L. Liu and H. G. Xing, *Nat Commun.*, 2012, **3**, 780.
- S. Badhwar, R. Puddy, P. R. Kidambi, J. Sibik, A. Brewer, J. R. Freeman, H. E. Beere, S. Hofmann, J. A. Zeitler and D. Ritchie, *IEEE Photonics J.*, 2012, **4**, 1776.
- L. Ju, B. Geng, J. Horng, C. Girit, M. Martin, Z. Hao, H. A. Bechtel, X. Liang, A. Zettl, Y. R. Shen and F. Wang, *Nat. Nanotechnol.*, 2011, **6**, 630.
- H. Yan, X. Li, B. Chandra, G. Tulevski, Y. Wu, M. Freitag, W. Zhu, P. Avouris and F. Xia, *Nat. Nanotechnol.*, 2012, **7**, 330.
- L. Vicarelli, M. Vitiello, D. Coquillat, A. Lombardo, A. Ferrari, W. Knap, M. Polini, V. Pellegrini and A. Tredicucci, *Nat. Mater.*, 2012, **11**, 865.
- H. Xu, Z. Zhang, H. Xu, Z. Wang, S. Wang and L.-M. Peng, *ACS Nano*, 2011, **5**, 5031.
- K. S. Novoselov, A. K. Geim, S. Morozov, D. Jiang, Y. Zhang, S. a. Dubonos, I. Grigorieva and A. Firsov, *Science*, 2004, **306**, 666.
- A. K. Geim and K. S. Novoselov, *Nat. Mater.*, 2007, **6**, 183.
- J. Liu, Q. Qian, Y. Zou, G. Li, Y. Jin, K. Jiang, S. Fan and Q. Li, *Carbon*, 2014, **68**, 480.
- S. Badhwar, J. Sibik, P. R. Kidambi, H. E. Beere, J. A. Zeitler, S. Hofmann and D. A. Ritchie, *Appl. Phys. Lett.*, 2013, **103**, 121110.
- Y. Zhang, T.-T. Tang, C. Girit, Z. Hao, M. C. Martin, A. Zettl, M. F. Crommie, Y. R. Shen and F. Wang, *Nature*, 2009, **459**, 820.
- K. Zou, X. Hong, D. Keefer and J. Zhu, *Phys. Rev. Lett.*, 2010, **105**, 126601.
- A. Konar, T. Fang and D. Jena, *Phys. Rev. B: Condens. Matter*, 2010, **82**, 115452.
- L. Liao, J. Bai, Y. C. Lin, Y. Qu, Y. Huang and X. Duan, *Adv. Mater.*, 2010, **22**, 1941.
- S. Kim, J. Nah, I. Jo, D. Shahrjerdi, L. Colombo, Z. Yao, E. Tutuc and S. K. Banerjee, *Appl. Phys. Lett.*, 2009, **94**, 062107.
- J. Bai, L. Liao, H. Zhou, R. Cheng, L. Liu, Y. Huang and X. Duan, *Nano Lett.*, 2011, **11**, 2555.
- B. Chakraborty, A. Das and A. Sood, *Nanotechnology*, 2009, **20**, 365203.
- J. Liu, Q. Li, Y. Zou, Q. Qian, Y. Jin, G. Li, K. Jiang and S. Fan, *Nano Lett.*, 2013, **13**, 6170.
- M. A. B. H. Susan, T. Kaneko, A. Noda and M. Watanabe, *J. Am. Chem. Soc.*, 2005, **127**, 4976.
- S.-K. Lee, S. H. Kabir, B. K. Sharma, B. J. Kim, J. H. Cho and J.-H. Ahn, *Nanotechnology*, 2014, **25**, 014002.
- J. H. Cho, J. Lee, Y. Xia, B. Kim, Y. He, M. J. Renn, T. P. Lodge and C. D. Frisbie, *Nat. Mater.*, 2008, **7**, 900.
- N. K. Emani, T.-F. Chung, A. V. Kildishev, V. M. Shalaev, Y. P. Chen and A. Boltasseva, *Nano Lett.*, 2013, **14**, 78.
- Z. Fang, S. Thongrattanasiri, A. Schlather, Z. Liu, L. Ma, Y. Wang, P. M. Ajayan, P. Nordlander, N. J. Halas and F. J. García de Abajo, *ACS Nano*, 2013, **7**, 2388.
- X. Yang, F. Zhai, B. Bai, H. Hu, J. Chen and Q. Dai, arXiv preprint arXiv:1504.00195, 2015.
- A. Pachoud, M. Jaiswal, P. K. Ang, K. P. Loh and B. Oezylmaz, *EPL-Europhys. Lett.*, 2010, **92**, 27001.
- A. Das, S. Pisana, B. Chakraborty, S. Piscanec, S. Saha, U. Waghmare, K. Novoselov, H. Krishnamurthy, A. Geim and A. Ferrari, *Nat. Nanotechnol.*, 2008, **3**, 210.
- B. J. Kim, H. Jang, S.-K. Lee, B. H. Hong, J.-H. Ahn and J. H. Cho, *Nano Lett.*, 2010, **10**, 3464.
- J. Ye, M. F. Craciun, M. Koshino, S. Russo, S. Inoue, H. Yuan, H. Shimotani, A. F. Morpurgo and Y. Iwasa, *Proc. Natl. Acad. Sci. U. S. A.*, 2011, **108**, 13002.

- 38 X. He, N. Tang, L. Gao, J. Duan, Y. Zhang, F. Lu, F. Xu, X. Wang, X. Yang and W. Ge, *Appl. Phys. Lett.*, 2014, **104**, 143102.
- 39 J. Lee, M. J. Panzer, Y. He, T. P. Lodge and C. D. Frisbie, *J. Am. Chem. Soc.*, 2007, **129**, 4532.
- 40 J. Kong, N. R. Franklin, C. Zhou, M. G. Chapline, S. Peng, K. Cho and H. Dai, *Science*, 2000, **287**, 622.
- 41 Y. Shi, X. Dong, P. Chen, J. Wang and L.-J. Li, *Phys. Rev. B: Condens. Matter*, 2009, **79**, 115402.
- 42 T. O. Wehling, M. I. Katsnelson and A. I. Lichtenstein, *Appl. Phys. Lett.*, 2008, **93**, 202110.
- 43 R. H. Boyd, *J. Polym. Sci., Polym. Phys. Ed.*, 1983, **21**, 505.
- 44 C. Hwang, D. A. Siegel, S.-K. Mo, W. Regan, A. Ismach, Y. Zhang, A. Zettl and A. Lanzara, *Sci. Rep.*, 2012, **2**, 590.
- 45 H. Yan, T. Low, W. Zhu, Y. Wu, M. Freitag, X. Li, F. Guinea, P. Avouris and F. Xia, *Nat. Photonics.*, 2013, **7**, 394.
- 46 X. Yang, X. T. Kong, B. Bai, Z. Li, H. Hu, X. Qiu and Q. Dai, *Small*, 2015, **11**, 591.
- 47 S. H. Abedinpour, G. Vignale, A. Principi, M. Polini, W.-K. Tse and A. MacDonald, *Phys. Rev. B: Condens. Matter*, 2011, **84**, 045429.
- 48 E. Hwang, R. Sensarma and S. D. Sarma, *Phys. Rev. B: Condens. Matter*, 2010, **82**, 195406.
- 49 M. Jablan, M. Soljačić and H. Buljan, *Phys. Rev. B: Condens. Matter*, 2011, **83**, 161409.
- 50 E. Hwang and S. D. Sarma, *Phys. Rev. B: Condens. Matter*, 2007, **75**, 205418.
- 51 V. W. Brar, M. S. Jang, M. Sherrott, S. Kim, J. J. Lopez, L. B. Kim, M. Choi and H. Atwater, *Nano Lett.*, 2014, **14**, 3876.
- 52 Y. Jia, H. Zhao, Q. Guo, X. Wang, H. Wang and F. Xia, *ACS Photonics*, 2015, **2**, 907.
- 53 F. Neubrech, A. Pucci, T. W. Cornelius, S. Karim, A. García-Etxarri and J. Aizpurua, *Phys. Rev. Lett.*, 2008, **101**, 157403.
- 54 C. Sonnichsen, T. Franzl, T. Wilk, G. von Plessen, J. Feldmann, O. Wilson and P. Mulvaney, *Phys. Rev. Lett.*, 2002, **88**, 077402.