



CrossMark  
 click for updates

Cite this: *RSC Adv.*, 2014, 4, 49577

# High-resolution imaging with SEM/T-SEM, EDX and SAM as a combined methodical approach for morphological and elemental analyses of single engineered nanoparticles

Steffi Rades,<sup>\*a</sup> Vasile-Dan Hodoroaba,<sup>a</sup> Tobias Salge,<sup>b</sup> Thomas Wirth,<sup>a</sup> M. Pilar Lobera,<sup>c</sup> Roberto Hanoi Labrador,<sup>d</sup> Kishore Natte,<sup>ae</sup> Thomas Behnke,<sup>f</sup> Thomas Gross<sup>a</sup> and Wolfgang E. S. Unger<sup>\*a</sup>

The combination of complementary characterization techniques such as SEM (Scanning Electron Microscopy), T-SEM (Scanning Electron Microscopy in Transmission Mode), EDX (Energy Dispersive X-ray Spectroscopy) and SAM (Scanning Auger Microscopy) has been proven to be a powerful and relatively quick characterization strategy for comprehensive morphological and chemical characterization of individual silica and titania nanoparticles. The selected "real life" test materials, silica and titania, are listed in the OECD guidance manual as representative examples because they are often used as commercial nanomaterials. Imaging by high resolution SEM and in the transmission mode by T-SEM allows almost simultaneous surface and in-depth inspection of the same particle using the same instrument. EDX and SAM enable the chemical characterization of bulk and surface of individual nanoparticles. The core-shell properties of silica based materials are addressed as well. Titania nominally coated by silane purchased from an industrial source has been found to be inhomogeneous in terms of chemical composition.

Received 29th May 2014  
 Accepted 17th September 2014

DOI: 10.1039/c4ra05092d

[www.rsc.org/advances](http://www.rsc.org/advances)

## Introduction

Due to the varied applications of nanoparticles in consumer and industrial products, human exposition and release to the environment are essential topics that need to be addressed by the OECD sponsorship program and regulation bodies, too. Examples for consumer products containing nanoparticles can be found in highly relevant fields, *e.g.* cosmetics, food and beverages, and clothing. In this context, nanoscaled TiO<sub>2</sub> and SiO<sub>2</sub> are high-priority and "true-to-life" materials.<sup>1,2</sup> However, there is still a lack of standardized toxicological and physico-chemical characterization methods for systematic evaluation and managing the risk of engineered nanoparticles. Under the generic term nano, the differences in particle size, morphology

and composition (just to name a few of them) are cached; nevertheless, they influence their (eco)-toxicological properties, and consequently, hazard identification and risk assessment. A fundamental prerequisite for conducting and assessing toxicological studies is to have a sufficiently and comprehensively characterized test material. Parameters to be addressed include particle size distribution, morphology, agglomeration/aggregation state, composition and description of surface chemistry (*e.g.* coating or modification).<sup>3</sup> The OECD has set-up such a list of physico-chemical measurands that should be determined for particles sponsored for toxicity testing.<sup>4</sup>

Powerful complementary characterization techniques capable of analyzing morphology, size and chemical composition at the surface and in the bulk of single nanoparticles are analytical electron microscopy, *i.e.* a combination of Scanning Electron Microscopy (SEM) with Energy Dispersive X-ray Spectroscopy (EDX), and Scanning Auger Microscopy (SAM). These methods are closely related to each other. In all the cases, a finely focused electron beam is scanned across the surface of a sample. When nanoparticles are investigated, a common preparation strategy can be used: dropping of dispersed particles onto a TEM grid. Morphology and shape information are derived from the detection of secondary electrons in SEM and, more suited for such purposes, transmitted electrons in T-SEM modes, analytical information from characteristic X-rays (EDX) and Auger electrons (SAM) that are emitted as the result of

<sup>a</sup>BAM Federal Institute for Materials Research and Testing, Division 6.8 Surface Analysis and Interfacial Chemistry, Unter den Eichen 44-46, 12203 Berlin, Germany. E-mail: wolfgang.unger@bam.de; Fax: +49 30 8104 1829; Tel: +49 30 8104 1823

<sup>b</sup>Bruker Nano GmbH, Am Studió 2D, 12489 Berlin, Germany

<sup>c</sup>Nanoscience Institute of Aragon (INA)-University of Zaragoza; and Networking Research Centre for Bioengineering, Biomaterials and Nanomedicine (CIBER-BBN), Edif. I+D, Campus Río Ebro, C/Mariano Esquillor s/n, E-50018 Zaragoza, Spain

<sup>d</sup>Nanologica AB, Drottning Kristinas Väg 61, SE 11428, Stockholm, Sweden

<sup>e</sup>Leibniz-Institut für Katalyse e. V. (LIKAT Rostock), Albert-Einstein-Str. 29 a, 18059 Rostock, Germany

<sup>f</sup>BAM Federal Institute for Materials Research and Testing, Division 1.10 Biophotonics, Richard-Willstätter-Str. 11, 12489 Berlin, Germany



radiative, and correspondingly, non-radiative decay events of core holes. Core holes are formed by the ionizing interaction of the primary electron beam with atoms constituting the sample. Surface sensitivity is achieved in the SAM analysis because the inelastic mean free path of the Auger electrons is typically <10 nm (*e.g.*  $\approx 3.1$  nm of Si KLL Auger electrons). Bulk information is delivered by EDX with electron excitation because typical X-ray photons may travel across a solid at the micrometer scale.

In contrast to assemble methods such as Small Angle X-ray Scattering (SAXS), Dynamic Light Scattering (DLS), X-ray Photoelectron Spectroscopy (XPS), X-ray Diffraction (XRD) and Brunauer–Emmett–Teller method (BET), SAM and (T-)SEM/EDX are two of the very few methods in nano analytics that have the capability to address individual nanoparticles.

In this report, we will present a number of case studies undertaken by complementary (T-)SEM/EDX/SAM analysis of different test materials. One such class is silica in its non-porous as well as its mesoporous forms. The core-shell properties of silica based materials<sup>5</sup> are addressed as well. Another test material is titania, which has been purchased from an industrial source as silane coated nanoparticles. Both “true-to-life” test materials under investigation—silica and titania—are listed in the OECD guidance manual.<sup>4</sup> These case studies are presented as the applications of the proposed combined analytical approach, which enables the routine morphological and chemical characterisations of individual nanoparticles in heterogenous batches originating from industrial processes. Moreover, heterogenous samples collected at work spaces and in the environment will be another area of application in the near future.

As far as we know, the combination of complementary SEM/T-SEM/EDX/SAM analysis has not been exploited on nanoscaled silica and titania yet. Here, we present the analysis of single- and multi-component nano-objects such as nanoparticles and core-shell systems by resolving their internal/external structure not only by imaging but in combination with chemical analysis.

## Experimental

### Materials, synthesis and pre-characterization

**Mesoporous silica nanoparticles and pre-characterization.** Silica (labeled within the project NanoValid as NNV-001) was synthesized by the sol-gel technique at Nanologica AB (Stockholm, Sweden). This synthesis route includes the use of a template agent, typically surfactant molecules, to form a micellar structure followed by the hydrolysis and condensation of silanol groups around the micelles in order to form the silica wall. The final step is calcination at high temperatures of the “as made” material in order to eliminate the template agent from the formed channels or pores. In the synthesis of NNV-001, an anionic surfactant was used as the template agent and an amino-silane molecule was used as a co-structure directing agent (as building the first “bricks of the silica wall”). After that, the formation of the silica wall was achieved after the condensation of silanol groups by adding tetraethyl orthosilicate (TEOS) as one of the most popular silica sources.

The physico-chemical pre-characterization of mesoporous nano-scaled silica has been carried out by ensemble methods such as BET, XPS and XRD to determine the size of mesopores, chemical composition and structure. Furthermore, to examine individual particles, TEM was employed in order to measure the particle size distribution and mesoporosity. These pre-examinations act as an independent control of the results obtained by the T-SEM, EDX and AES methods, which will be the focus of this report.

The nitrogen gas adsorption analysis was performed in a Micromeritics TriStar 3000 system. Before the analysis, the sample was placed in the sample holder and was heated to 423 K at a rate of 10 K min<sup>-1</sup> while degassing down to 10<sup>-5</sup> bar for 180 min. The sample mass after degassing was 0.2508 g with the initial mass being 0.2616 g. The sample was subsequently transferred to the analysis port of the device and subjected to the measuring protocol that comprises further degassing for 180 min, free-volume determination using He gas at both room temperature (298 K) and cold (77 K) conditions, and finally, analysis at 77 K. The relative pressures and adsorbed gas volumes were automatically determined using the built-in analysis routines of the TriStar device.

Nitrogen adsorption and desorption isotherms have been measured for the NNV-001 silica nanoparticles at 77 K. According to the IUPAC classification, the isotherm is identified to be of type IV, which is commonly assigned to mesoporous materials with low or negligible microporous volumes.<sup>6</sup> Moreover, the shape of the isotherm is similar to that found for ordered mesoporous materials such as those of the family M41S.<sup>7,8</sup> The values of the specific surface area  $S_{\text{BET}}$  and of the pore volume  $V_p$  of the material are 949 m<sup>2</sup> g<sup>-1</sup> and 0.48 cm<sup>3</sup> g<sup>-1</sup>, respectively, which are determined by applying the BET procedure. Furthermore, the estimation of the mesoporous size  $D_p$  was calculated to be 2.0 nm by applying the Barrett-Joyner-Halenda (BJH) approximation to the adsorption branch of the isotherm.

XPS measurements were carried out with an AXIS Ultra DLD electron spectrometer manufactured by Kratos Analytical, UK. The XPS spectra were recorded using monochromatized Al K $\alpha$  excitation at a pass energy of 80 eV for survey spectra and 20 eV for the core level spectra. The electron emission angle was 0° and the source-to-analyzer angle was 60°. The binding energy scale of the instrument was calibrated following the Kratos Analytical procedure that uses ISO 15472 binding energy data.<sup>9</sup> The spectra were taken by setting the instrument to the hybrid lens mode and the slot mode providing approximately a 300 × 700  $\mu\text{m}^2$  analysis area. A charge neutralizer was used. The binding energy scale was corrected for charging<sup>10</sup> using an electron binding energy of 285.0 eV (ref. 11) for the C1s binding energy of aliphatic hydrocarbons. This correction procedure may be an additional source of uncertainty of the binding energy. The spectra have been analyzed with the program CasaXPS versions 2.3.15 and 2.3.16.<sup>12</sup> The NNV-001 sample has been prepared for measurement on a double sided adhesive tape (Scotch™).

In the XPS spectra of NNV-001, only the elements Si, O and C have been identified. On the surface of NNV-001, carbon occurs



at low surface concentrations due to the adsorbed hydrocarbons originating from ambient air exposure. The quantification results of the test material are displayed in Table 1. The O/Si atomic ratio ( $\cong 2.4$ ) is higher than the theoretical value. This could be due to some oxygenated groups present in the hydrocarbon adsorption layer. The binding energies measured for Si2p and O1s are very close to the reference values published in the literature for silica.

The silica material was characterized by X-ray diffraction (XRD) at room temperature on a D-Max Rigaku diffractometer with a rotating anode, operating at 40 kV and 80 mA. The set-up is equipped with a copper anode and a graphite monochromator to select CuK $\alpha$  radiation ( $2\theta = 10\text{--}90^\circ$ ; the diffractogram was scanned using  $0.03^\circ$  steps and a counting time of 1 s per step).

The XRD pattern of the silica particles does not exhibit a regular pattern, and only a broad band emerges at about  $2\theta = 24^\circ$ . This indicates that the silica particles synthesized by Nanologica AB have the typical structure of amorphous silica.

**Synthesis of non-porous silica modified with IPTES.** Silica/IPTES (IPTES 3-isocyanatopropyltriethoxysilane) nanoparticles were prepared by mixing TEOS, ethanol and ammonia hydroxide in a necked flask and stirred for 30 min. IPTES was then added dropwise to the mixture under the protection of argon. The reaction mixture was stirred under argon atmosphere at an ambient temperature for 24 h. After the completion of the reaction, the particles were purified by dialysis to remove unreacted reactants and other byproducts. Dialysis was carried out for 3 days by changing the Milli-Q water twice per day. Eventually, the samples were filtered with  $0.2\ \mu\text{m}$  filters and the dispersions were stored at  $20\ ^\circ\text{C}$ .

**Synthesis of non-porous silica labeled with Alexa dye.** Fluorescent silica nanoparticles have been synthesized as described in detail in a previous paper.<sup>5</sup> The precursor was aminated (IPTES) silica that has been labeled with Alexa dye. Alexa 750® is fluorescent in the near infrared range. A concentration of  $2\ \text{mmol L}^{-1}$  Alexa 750® was applied during the coupling reaction and there was no further silica shell formed. The final core-shell nanoparticles are delivered in a water suspension at a concentration of about  $50\ \text{mg mL}^{-1}$ .

**Titanium(IV) oxide (rutile), silane coated.** This material was obtained from Skyspring Nanomaterials (purity: 99.5%;  $D_{50}$ : 10–30 nm, specific surface area:  $\sim 50\ \text{m}^2\ \text{g}^{-1}$ ); it was delivered as a powder and suspended supersonically in  $\text{H}_2\text{O}$  prior to the analyses.

### TEM instrumentation and sample preparation

Mesoporous nano-scaled silica (NNV-001) has been characterized by Transmission Electron Microscopy (TEM) in a FEI

Tecni T20 microscope using copper grids as the sample holder. TEM Imaging and Analysis software (TIA) was used for TEM image processing.

The sample suspension (concentration: 10 ppm) was sonicated for 1 min in a bath to ensure a well-dispersed suspension. Then, a drop ( $5\text{--}20\ \mu\text{L}$ ) of the suspension was deposited on the TEM grid and allowed to dry for at least 24 h at room temperature.

### SEM/T-SEM/EDX instrumentation and sample preparation

The SEM Zeiss Supra 40 utilized here is equipped with a high-resolution cathode (Schottky field emitter) and an In-Lens SE (secondary electrons) detector used in the high resolution mode, which significantly enhances the quality of the images of nanoparticles when compared to those obtained by a conventional Everhart–Thornley (E–T) detector. Furthermore, the SEM can be operated in the transmission mode, *i.e.* the so-called T-SEM (Transmission in Scanning Electron Microscope) (see Fig. 1). In the transmission mode, advanced nanoparticle analysis can be accomplished by gaining in-depth information as well as very accurate lateral information, *e.g.*, for size distribution analysis of ensembles of nanoparticles. The so-called STEM (Scanning Transmission Electron Microscopy) detector is often used for performing transmission imaging in a SEM instrument.<sup>13</sup> Instead of this, we used the so-called single-unit transmission set-up as commercially available from Zeiss<sup>14,15</sup> (see Fig. 1). Both sample and substrate (*e.g.* a TEM grid) have to be electron transparent at electron energies  $\leq 30\ \text{keV}$ , which is the typical range for SEM. This transmission unit holds the sample, which is usually prepared on a conventional TEM grid with a thin foil as the substrate. Primary electrons transmitted by the sample impinge on a gold plate under the bright/dark field aperture. The role of the gold plate is to converse and multiply the transmitted electrons into secondary electrons, which are then collected by the conventional Everhart–Thornley detector. The direct way of the secondary electrons emitted by

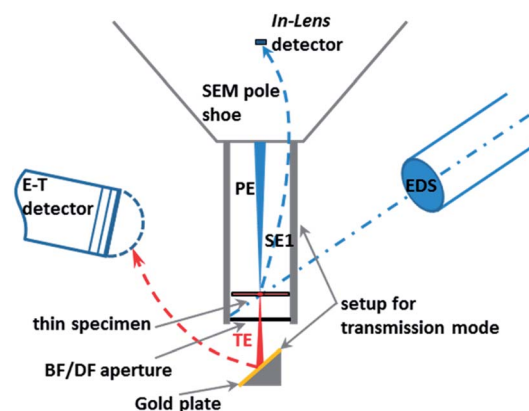


Fig. 1 Scheme of a SEM/EDS system operating in the transmission mode with the Zeiss single-unit transmission set-up (PE: primary electrons; SE1: secondary electrons emitted at the point of impact of the PE on the sample; TE: transmitted electrons; BF: bright field; DF: dark field; E–T: Everhart–Thornley detector).

Table 1 Surface concentration of elements on NNV-001 silica

Peak	Binding energy/eV	Surface concentration/at.%
O1s	533.3	68
C1s	285.0	4
Si2p	103.9	28



the sample surface towards the E–T detector is blocked by a dedicated screening ring. More information on the operation of the setup can be found in other papers.<sup>16,17</sup> The combination of the two techniques, In-Lens detection and T-SEM, enables the high-resolution top-surface and in-depth observation of nanoparticles.<sup>18</sup> In addition to imaging the sample surface morphology and structure, elemental analysis can be conducted with an EDS (Energy Dispersive X-ray Spectrometer) detector. EDX spectra were measured with a Si(Li) EDS detector (Thermo Scientific) or an XFlash® SDD detector (Bruker), both having an active area of 10 mm<sup>2</sup>. For one particular case study, a large-area SDD EDS detector (Bruker) capable of high-sensitivity detection has been used.

The outlined approach enables a comprehensive analysis of nanoparticles in terms of size, shape and morphology, as well as elemental composition.

The samples have been prepared for analysis by using a few microliters of the sample solution, which is dropped onto conventional TEM grids. Most often, TEM copper grids coated with a carbon foil (Plano) have been used. The grid with the droplet was dried in air. It should be noted that particles have to be sufficiently dispersed on the grid. Otherwise, for EDX imaging, X-ray signals coming from different particles could overlap due to cross excitation, and therefore, it is recommended to measure with EDX on isolated particles.

### AES instrumentation and sample preparation

A PHI 700 Auger Scanning Probe (ULVAC-PHI Inc.) equipped with a coaxial cylindrical mirror analyzer (CMA) was used in SEM and Scanning Auger Microscopy modes. Auger electrons were excited by primary electron beams of 20 kV @ 1 nA and 25 kV @ 1 nA. The primary electron beam impinges on the surface at normal incidence. Measurements started with imaging nanoparticles by secondary electrons (SEM mode) in order to re-localize the points of interest. These particles were investigated by spectral point analysis, line scans and element mapping.

Sample preparation procedures were taken over one-by-one from the T-SEM experiments.

## Results and discussion

### Case study I: characterization of mesoporous silica particles

Silica with mesoporosity is characterized by a very high (and variable) surface area, differentiated in the outer and inner pore surface, high and tunable pore volume, adjustable pore size, pore network of various types and structures (controllable nanoparticle size) combined with silanol groups for functionalization in the outer and inner surfaces.<sup>19–28</sup> Structurally, nanoporous silica particles reveal porous order on the mesoscopic scale and disorder on the atomic scale.<sup>7</sup> The channels, cages or pores, formed within the materials are supported by an amorphous silica wall and are arranged periodically on a lattice. Nanoporous silica has become, in the last decade, a popular matrix for the incorporation and support of functional species. The resulting advantages and potential applications based thereof include loading, transport and release of drugs. Based

on the adsorption of active molecules besides pharmaceutical drugs,<sup>20,29,30</sup> fat soluble vitamins<sup>31</sup> and flavors<sup>32,33</sup> onto stable, non-erosive nano (meso-) porous materials have been explored.<sup>34</sup>

**Imaging by TEM, SEM and T-SEM.** The TEM images of mesoporous silica particles (sample NNV-001) synthesized by Nanologica AB are shown in Fig. 2. Fig. 2a displays a TEM image with clear evidence of the pores in particles of rather spherical shape, and thus, confirms the mesoporous structure of the silica particles. Fig. 2b reveals the presence of long-range



Fig. 2 (a–c) TEM images of silica NNV-001 particles, (d) diffraction pattern obtained from the particle displayed in (b), (e) T-SEM image of the as-prepared dispersion, (f) T-SEM image of the aged dispersion, (g) histogram showing the particle size distribution of the freshly prepared dispersion as measured by T-SEM and (h) histogram with the particle size distribution of the aged dispersion as measured by T-SEM.



alignment of pores, *i.e.* a hexagonal array of ordered mesopores. Besides these mesoporous particles, TEM analysis also reveals nearly spherical particles possibly containing non-aligned pores (see Fig. 2c). Furthermore, there is a visible shell that is distinguished from the core by pores that are radially oriented.

The particle size analysis of the as-prepared dispersion has been done by using T-SEM (see representative particles in Fig. 2e), revealing the poly-disperse characteristic of NNV-001. The mean of the area equivalent particle diameters and  $\pm$  one standard deviation of the particle size distribution (written in the brackets) were around 230 (90) nm (Fig. 2g). AES and EDX measurements were done with fresh and stored dispersions. For particle size verification, analysis was re-done with these aged dispersions. There has been no significant change of the mean value of the equivalent particle diameter (230 (70) nm). The size distribution of a representative number of particles imaged in Fig. 2f is displayed in Fig. 2h. There are even a few particles present, much bigger, up to about 1  $\mu$ m, observed in the T-SEM micrographs, but not shown in the size distributions in Fig. 2g and h. Additional information on the capability of T-SEM to accurately measure nanoparticle size distribution is extensively reported in Buhr *et al.*<sup>35,36</sup>

Using the In-Lens detector for high resolution SEM, individual silica NNV-001 nanoparticles were imaged (Fig. 3a). They are rather spherical with a rough surface. T-SEM images in bright-field (BF) mode reveal specific differences for those three nanoparticles displayed in Fig. 3a by exploitation of the transmission image contrast as shown in Fig. 3b. Herein, the contrast is more sensitive to local differences in the sample density/atomic number. The T-SEM imaging mode allows a classification of the silica NNV-001 particles as follows:

- The first class consists of crystalline nanoparticles having ordered mesopores. They show a dark image contrast in the BF transmission mode (see left particle in Fig. 3b) and appear to be homogeneous.

- The second class is constituted of nanoparticles having non-aligned mesopores (middle particle in Fig. 3b and particle as shown in Fig. 2c).

- Particles belonging to the third class appear as “core-shell” systems in the T-SEM image (right particle in Fig. 3b). Actually, they seem to be hollow.

Note that the high-resolution, surface-sensitive imaging mode used for In-Lens SEM (*cf.* Fig. 3a) is not sufficient to distinguish the three classes of silica particles constituting the silica NNV-001 batch, because differentiation is only possible by the analysis of the inner structures. Similar porous and hollow silica nanoparticles have been recently investigated by Teng *et al.*,<sup>37</sup> which is based on conventional TEM image data. The conclusion is that the silica NNV-001 particles are not uniform. This inhomogeneity might be ascribed to the sample preparation procedure, which consists of dispersion in water. Teng *et al.*<sup>37</sup> investigated the changes of the structure of mesoporous silica nanoparticles depending on the experimental conditions. They showed that the longer and higher the temperature of incubated silica spheres in water is, the more the transformations of mesostructured silica spheres into hollow spheres are. In the investigated silica NNV-001 sample, we obviously observe different stages of this solid-to-hollow transformation, all co-existing in the same batch.

**Bulk analysis of single nanoparticles by EDX.** By using EDX/T-SEM, we have attempted to correlate the elemental composition measured across a particle (line scan) to representatives of the different classes of silica nanoparticles identified by T-SEM imaging. The typical results are summarized in Fig. 4:

- These mesoporous silica particles that are crystalline and the ordered pores therein exhibit EDX Si  $K\alpha$  and O  $K\alpha$  intensity line scans with a “single mountain” profile (see Fig. 4a). This line scan correlates to the rather uniform material contrast obtained in T-SEM.

- Particles with non-ordered mesopores and showing “crushed” surface in In-Lens SEM (middle particle in Fig. 3a) belong to the second class of particles mentioned above. They are characterised by top-hat shaped line scan profiles for both Si  $K\alpha$  and O  $K\alpha$ , as displayed in Fig. 4b, which are different from those obtained with crystalline mesoporous silica particles. The difference in the line scan shape of the two classes of silica nanoparticles originates obviously from the differences in the local particle density corresponding to silica with aligned and non-aligned mesoporous structure.

- The line scan profiles in Fig. 4c are, with their two maxima structures, typical for hollow silica nanoparticles (belonging to the “third class” as defined above).

In addition to the particular line scan intensity distributions displayed in Fig. 4, one other interesting finding is that the stoichiometry—represented by the Si  $K\alpha$  to O  $K\alpha$  intensity ratio—of all the three classes of silica nanoparticles is almost the same, considering the level of noise. The results for a rather seldom class of nano scaled silica particles are shown in Fig. 5. These particles are homogeneous in image contrast (*cf.* Fig. 5a) and the EDX O  $K\alpha$  and Si  $K\alpha$  line intensities of the line scan are represented in Fig. 5b. It is striking that there is a strongly enhanced Si  $K\alpha$  signal when compared to the O  $K\alpha$  signal and to



Fig. 3 (a) High resolution In-Lens SEM image of silica nanoparticles and (b) corresponding transmission (T-SEM) image. Particles can be classified by the image contrast shown in (b): left particle shows a homogeneous image contrast and represents class one, middle particle exhibits non-ordered mesopores and is classified as class two, and right particle is hollow and belongs to class three. Note that the difference in contrast between the left particle and the middle one in (b) is barely visible on paper and better distinguishable on a common PC monitor.



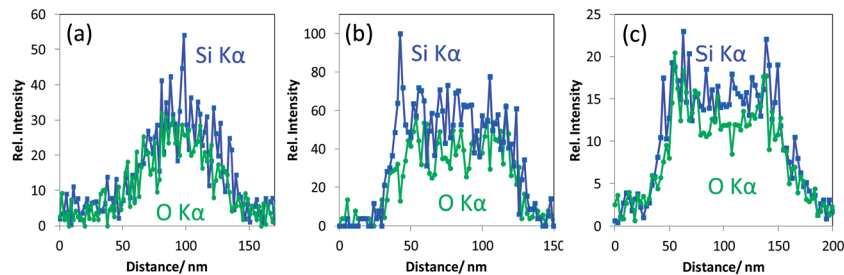


Fig. 4 Representative EDX line scans for Si  $K\alpha$ , obtained on silica nanoparticles (100–150 nm diameter) classified as a) crystalline with the ordered pores therein (class one), (b) amorphous with non-ordered mesopores (class two) and (c) hollow (class three).

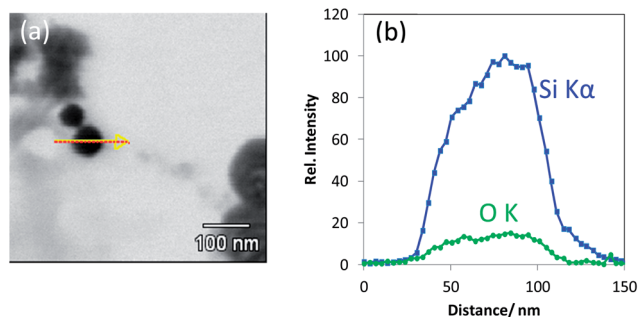


Fig. 5 (a) T-SEM image of a silica nanoparticle ( $d \approx 65$  nm) with an arrow indicating the EDX line scan position and (b) EDX line scan with Si  $K\alpha$  signal and O  $K\alpha$  signal of the particle shown in (a).

the line scan displayed earlier in Fig. 4 measured under the same experimental conditions. This indicates that this particle has an elemental composition that differs significantly (more silicon and less oxygen) from that of all the silica particles discussed before (see Fig. 4a–c).

Of course, it would be worthwhile to quantify the measured EDX intensities into elemental concentrations. The existing state-of-the-art EDX quantification algorithms are such that they are fairly accurate; however, they are applicable for bulk samples having a homogeneous elemental composition and a flat surface in the range of the interaction volume of the primary electron beam (with energies up to 30 keV in a conventional SEM) with the sample. In dependence on the beam energy as well as the atomic number of the sample constituents, typically, volume in the range of roughly one cubic micrometer can be addressed. This limits the spatial resolution of SEM/EDX. By operating the transmission approach using electron-transparent samples, these prerequisites for an accurate quantification by the existing EDX quantification algorithms are no longer fulfilled. For electron-transparent, thin film samples (lamellae), there are TEM/EDX quantification approaches, which often yield acceptable results. However, such procedures have not been validated yet for the much lower beam voltages used for SEM/EDX working in the transmission mode. Moreover, the so-called  $k$ -factor (or Cliff–Lorimer) quantification approaches<sup>38,39</sup>—applicable to thin layers—have not been tested on (nano)particles. Systematic efforts must be spent in order to develop new and suitable quantitative concepts.<sup>40</sup> Another

empirical quantification approach would be to directly compare the elemental intensity ratios of the reference materials of similar concentration and size distribution as the particles to be investigated. The main drawback here is constituted by the lack of silica nanoparticle reference materials with valid elemental compositions. On the whole, it remains that the simple comparison of EDX intensity ratios between (nano)particles measured under the same conditions yields reliable semi-quantitative information (although it is not fully satisfying) when performing EDX using SEM in the transmission mode.

**Surface analysis of a single nanoparticle by AES.** To get a closer look of the nanoparticle's surface composition, AES has been utilized. At first, a nanoparticle of about 30 nm has been selected on the TEM grid and imaged by In-Lens SEM (see Fig. 6a). In the next step, a grid was introduced into the AES instrument and the particle location re-found by using the SEM mode, applying a 25 keV primary electron beam (Fig. 6b). The instrument was switched to the AES mode and an AES point spectrum was acquired. The excitation electron beam (diameter  $\approx 10$  nm) was focused on the center of the  $\approx 30$  nm silica particle and Auger-electrons of Si, O, C and P (only traces) were detected (Fig. 6c). Additionally, Auger line scans were acquired (Fig. 6d) for Si KLL, O KLL and C KLL. In the range of the particle, the O and Si signals in Fig. 6d clearly originate from silica. Considering the C line scan, it can be concluded that the carbon foil on the TEM grid contributes to the signal. Moreover, we consider that the C-signal of the point spectrum and the intensity measured at the dip positioned at 0.05  $\mu\text{m}$  distance in the C line scan, which exactly coincides with the maxima in both Si and O line scans, may also represent carbon surface coverage (e.g. contamination of adsorbed hydrocarbons from ambient air) of the silica nanoparticle. A more detailed discussion of such AES line scans measured with nanoparticles deposited on TEM grids as well as on other substrates is given in other papers.<sup>41–43</sup>

As the next exercise, it has been tried to acquire SAM maps of another silica nanoparticle of roughly the same size. Elemental maps are presented in Fig. 7 and the corresponding point Auger electron spectrum is shown in Fig. 8. Si and O maps characterize the silica particle's surface, revealing that the entire particle's surface consists of Si and O. The carbon map supports the interpretation of the carbon line scan displayed in Fig. 6d. The nanoparticle occurs as a shadow on the carbon film on the TEM grid, and the remaining intensity in the shadow may





Fig. 6 (a) In-Lens SEM image of a  $\approx 30$  nm silica nanoparticle deposited on a carbon foil of a TEM grid, (b) SEM image of the same particle acquired in the SAM instrument, (c) AES point spectrum taken on the center of the particle identified in (b) and (d) AES line scans across the particle. The line scan position is displayed in (b) with a blue line.

represent the C surface concentration at the silica nanoparticle. The AES point spectrum taken from the center of the particle's surface with a rather narrow primary electron beam (Fig. 8) reveals the presence of C, O and Si on the surface. Regarding carbon, the C-map in combination with the point spectrum suggests the presence of a carbon coating as contamination of the entire particle surface.

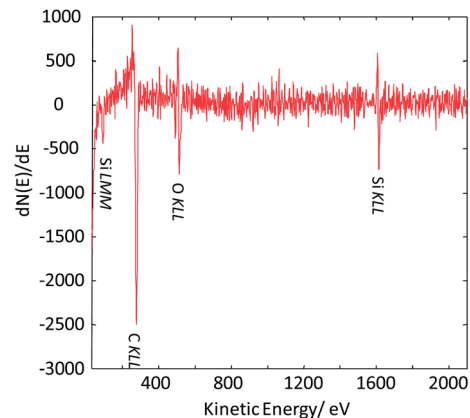


Fig. 8 Auger point spectrum (applied beam energy of 20 keV) measured at the center of the silica nanoparticle imaged in Fig. 7.

### Case study 2: core-shell character of silica and titania particles

**IPTES shell/non-porous silica core nanoparticles.** The validation of the core-shell character of a nanoparticle is a challenge for characterization methods. In one application showcased in this report, the shell of a silane coupling agent (IPTES in our case), was established on non-porous silica particles. IPTES as a versatile silane coupling agent is used for coating silica with polyethylene glycol.<sup>44–46</sup> It turned out that by using a substrate that contains sparse carbon and because the silica core does not contain carbon, an EDX line scan across an IPTES-silica nanoparticle (selected before by T-SEM) has been shown to be successful to detect enhanced C intensity for the supposed shell regions (see Fig. 9a and b).

In case of a silica IPTES core-shell particle obviously showing a vesicular morphology in T-SEM (Fig. 10a), the transmission contrast resembles the local mass density (and/or atomic number) of the sample. This is clearly seen by comparison to the significantly enhanced line scan intensities of Si K $\alpha$  and O K $\alpha$  in the particle shell region in Fig. 10b. IPTES is the origin of the nitrogen signal. Here, the related high-resolution EDX line scan confirms the vesicular structure of the particles of this type.

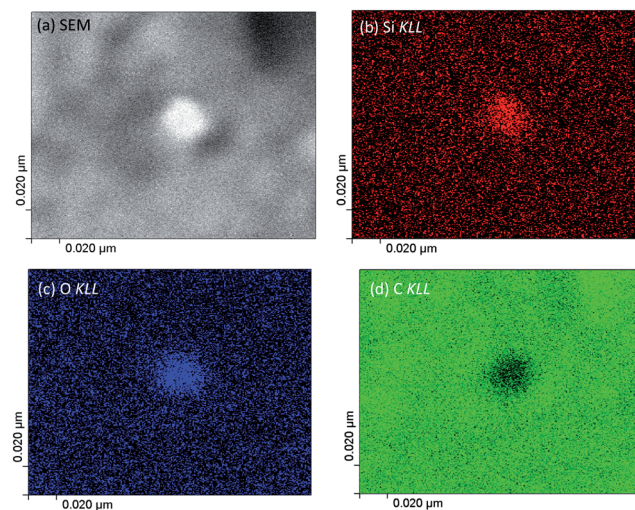


Fig. 7 (a) Image of a silica nanoparticle on a TEM grid taken in the SEM mode of the SAM nano probe applying a 20 keV primary electron beam, (b) Si KLL elemental map, (c) O KLL elemental map and (d) C KLL elemental map.

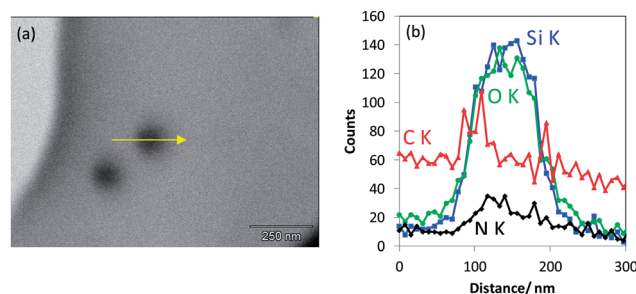


Fig. 9 (a) T-SEM image of non-porous silica nanoparticles covered by an IPTES shell that were deposited on a Substratek™ grid as a low-carbon substrate for analysis, (b) EDX line scan measured along the particle as indicated by the arrow in (a).





Fig. 10 (a) T-SEM image of non-porous silica nanoparticles modified with IPTES deposited on carbon foil coated copper grid and (b) EDX line scan measured along a particle as indicated by the arrow in (a).

**Fluorescent shell/non-porous silica core nanoparticles.** In another application, non-porous silica nanoparticles covered by a fluorescent shell have been analyzed. Coated silica, which is fluorescent in the near infrared spectral range, is of high interest for *in vitro* and *in vivo* investigations due to minimized absorption, scattering and autofluorescence from tissue and blood components in this spectral region.<sup>47,48</sup> The fluorescent shell was established by the coupling of Alexa 750 dye® *via* a coupling agent (IPTES) to the surface of the particles.<sup>5</sup> The elemental composition of Alexa 750 dye® is unfortunately not specified in the open literature.

Elemental EDX mapping obtained using a high-sensitivity SDD EDS detector is shown in Fig. 11. The main constituents, namely, C, O and Si, of the core-shell, non-porous silica nanoparticles were successfully detected and signals were used for line scans and imaging. The rather generic EDX signal of C K $\alpha$  can be used to confirm the existence of an organic layer on the silica nanoparticles. Even with the carbon foil as a substrate, where the particles are deposited upon, the C K $\alpha$  signal emitted from the particles themselves can be effectively distinguished. A thin carbon-rich shell—in the range of about 10 nm thickness—is detected by the high-sensitivity EDS detector and clearly visualized by extracting a line scan across a particle (white arrow) out from the EDX map in Fig. 11b. Moreover, the line scan shows also that there is carbon-rich material close to the particle. This material is displayed as the reddish region “below” the particles in Fig. 11b. Obviously, dye material from the shell of the particles has leached onto the substrate very likely during sample preparation. One feasibility check allowing this qualitative discussion is the stable intensity of the carbon signal along the EDX line scan in Fig. 11c, which does not change with the time of irradiation. Sample contamination due to carbon cracking at the area of impact of the electron beam on the sample (the thin film substrate, in this case) is well known in electron microscopy. This phenomenon regularly results in a continuous increase of the carbon signal in a line scan *vs.* time of irradiation plot. Furthermore, very weak signal intensities in the range of the detection limit of the elements N and S have been measured within the particle areas. Both elements are presumably constituents of the dye, and nitrogen is also present in the applied silane coupling agent IPTES. It must be noted that the findings above were possible only by using a high-

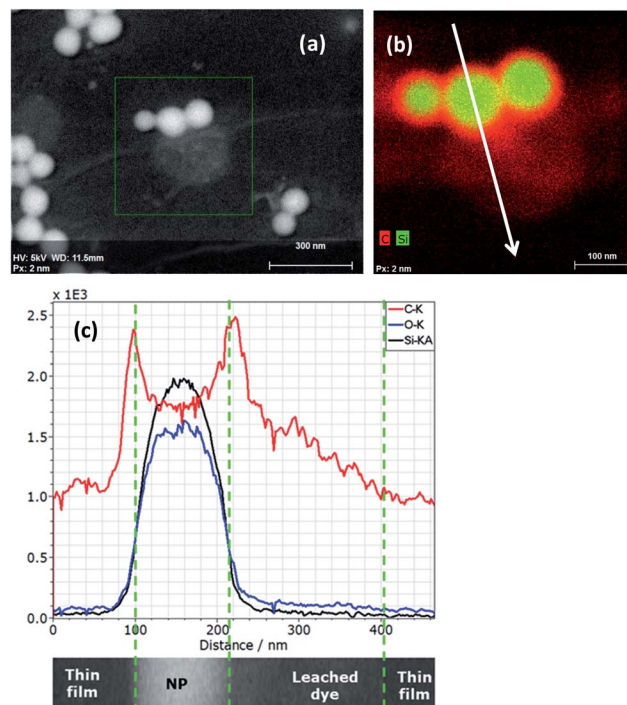


Fig. 11 (a) SEM image with (b) corresponding composite EDX map of the integrated peak intensities of C K $\alpha$  (red) and Si K $\alpha$  (green) acquired from fluorescent silica core-shell nanoparticles. Data were taken with a Bruker XFlash FlatQUAD EDS 5060F detector with a Hitachi SU8230 SEM, at 5 kV, 520 pA, 22.5 kcps, 250  $\times$  250 pixels, 2 nm per pixel and 377 s acquisition time. (c) EDX line scan of C K $\alpha$ , O K $\alpha$  and Si K $\alpha$  (net intensities, 229 points, 467 nm length, 30 kcps, 6.9 s) extracted out of the spectrum image data cube corresponding to the distance marked in the EDX map; five adjacent pixel/spectra were binned for each point in order to improve the impulse statistics.

sensitivity detector with a very large active area (and correspondingly large collection solid angle). A conventional 10 mm<sup>2</sup> EDS detector does not provide sufficiently high sensitivity and cannot be used to distinguish the local features as described here. The recent development of large-area EDS detectors is impressive, so that successively larger X-ray fluxes emitted by such tiny samples can be collected through large solid angles. This development will substantially increase the measurement capabilities of the EDX/T-SEM tool in the characterization of nanoparticles.

**Silane shell/titania core nanoparticles.** In another study, titania nanoparticles nominally coated with silane have been analyzed. In Fig. 12a and b, the representative In-Lens and T-SEM images of an agglomerate/aggregate of particles are displayed. The sample was labeled as “rutile, silane coated” by the supplier. Images revealed heterogeneity in terms of size and shape observed for individual particles both in secondary electron and transmission contrast. There are very small particles besides bigger “nuggets”. With regard to the latter, bigger particles occur dark in the T-SEM image. In In-Lens SEM, the morphology of the bigger particles appears as irregularly shaped; sometimes, they are more elongated. Further, EDX line scans finally reveal chemical heterogeneity of the material at about 30 nm and 100 nm (Fig. 12c) and at about 60 nm and 140







Fig. 12 (a) In-Lens SEM and (b) T-SEM image of nominal silane coated titania nanoparticles, (c and d) EDX line scans of elements Si (blue squares), O (green line, no symbol) and Ti (magenta triangles) together with T-SEM images (inserts) of a titania–silane aggregated nano-material. Yellow arrows represent the EDX line scan positions.

nm (Fig. 12d) of the line scan position. The T-SEM and EDX analyses shown in Fig. 12b and c, respectively, reveal a representative difference in the composition for darker and brighter particles. The brighter nanoparticle seems to be mainly composed of Si and O, whereas the darker one mainly consists of Ti and O, *i.e.* titania, eventually with some Si originating from the specified silane coating. The coating might be too thin for unambiguous detection by EDX when a conventional  $10 \text{ mm}^2$  SDD EDS detector is used. Again, the use of a high-sensitivity detector with a very large active area could resolve this problem. The particles displayed in Fig. 12d probably belong to the second class of particles, titania with some silane thereon, similar to the big particle shown in Fig. 12c (around 100 nm). The conclusion here is that the material is chemically and morphologically inhomogeneous. There are at least two different classes of nanoparticles that are found by the combined SEM, T-SEM, and EDX analysis. The first particle class is characterized by almost only Si and O in EDX and matches with the small particles, whereas the nanoparticles assigned to be titania/Si by EDX preferentially represent the “nugget” particle group seen in the SEM/T-SEM images. As a possible reason for that, sample preparation cannot be excluded. A powdery product had been dispersed in water beforehand and may thus have altered the particle composition.

## Conclusions

Imaging by high resolution SEM and the special set-up for transmission (T-SEM) allows almost simultaneously inspecting the same (nano)particle on a short time scale to gain access to the particle's surface and in-depth information. Yet, the T-SEM lateral resolution is limited to particle sizes of about 5–10 nm

strongly depending on the type of material. Of course, TEM is superior in imaging performance, but SEM/T-SEM imaging in combination with EDX is a quick and practical tool for nano-analysis by morphology including size and elemental composition. Current advanced EDS detector systems, *e.g.* large-area SDD detectors, are further improving the sensitivity necessary for nanoparticle characterization. As a complementary technique, AES has been employed to enable the analysis of the surface of nanoparticles after bulk examination by EDX.

For mesoporous silica nanoparticles, In-Lens SEM and T-SEM delivered morphological information confirmed by TEM. Based on these morphological data, the material can be considered as inhomogeneous. There are three coexisting classes: (1) particles with long-range alignment of pores, (2) particles with non-ordered mesopores, and (3) hollow particles. EDX chemical analysis of these particles can be used to differentiate classes (1) and (3), at least. Surface chemical analysis by SAM revealed, besides Si and O, a very thin surface layer of carbonaceous material that may originate from hydrocarbons adsorbed during sample handling on ambient air.

Non-porous silica nanoparticles having a shell of IPTES were analyzed in order to test the combined approach for validation of their core–shell characteristic. Strong indications for the existence of a shell have been derived from the EDX carbon line scans.

EDX elemental mappings of fluorescent silica core–shell nanoparticles, produced from the IPTES functionalized ones by the coupling of Alexa dye®, have been carried out. Here, elemental mappings obtained using a high-sensitivity EDS detector reveal carbon signals well correlated to the Si and O signals representing nanoparticles that are provided with a carbon-rich, *i.e.* organic, shell.

The analysis of the titania–silane nanoparticulate material revealed that it is different from the product label rutile coated with silane. SEM/T-SEM together with different EDX line scans of Ti, Si and O are used to identify at least two kinds of particles as constituents of the material: one kind of particle mainly consists of Si and O and the other one, Ti and O with some minor Si signals. The latter kind could be representative of the rutile coated with silane as specified by the manufacturer.

The combination of complementary characterization techniques such as SEM, T-SEM, EDX and SAM has been proven to be a powerful strategy for comprehensive morphological and chemical characterizations of individual “real life” silica and titania nanoparticles. The case studies facilitate the analysis of multi-elemental nanosystems with complex geometric structures. AES and EDX methods can complement each other and enable to differentiate the elements present in the uppermost surface as well as in-depth and even the whole nanoparticle volume depending on the particle size. The procedures of automatic measurement as well as the evaluation of nanoparticles size, shape and chemical composition by means of both basic techniques (T-SEM/EDX and SAM) are just being developed and tested on real-life products and samples collected from the work space or environment. It is expected by the authors that such promising automatic procedures will be able to be implemented on a routine basis on a statistically



relevant number of nanoparticles in the near future, so that the nanoparticle characterization with this combined methodical approach can become significantly efficient.

## Acknowledgements

We acknowledge the help of S. Benemann for operating the SEM. The research leading to these results has received funding from the European Union Seventh Framework Programme (FP7/2007-2013) under grant agreement no. 263147 (NanoValid – Development of reference methods for hazard identification, risk assessment and LCA of engineered nanomaterials, see <http://www.nanovalid.eu/>).

## References

- 1 A. Narayanan, P. Sharma and B. M. Moudgil, *KONA Powder Part. J.*, 2013, **30**, 221.
- 2 G. Orts-gil, K. Natte and W. Österle, *RSC Adv.*, 2013, **3**, 18202.
- 3 A. E. Garcia-Bennett, *Nanomedicine*, 2011, **6**, 867.
- 4 Guidance Manual for the Testing of Manufactured Nanomaterials: OECD Sponsorship Programme: First Revision. no. 25-ENV/JM/MONO(2009)20/REV.
- 5 K. Natte, T. Behnke, G. Orts-Gil, C. Würth, J. F. Friedrich, W. Österle and U. Resch-Genger, *J. Nanopart. Res.*, 2012, **14**, 680.
- 6 K. Sing, D. Everett, R. Haul, L. Moscou, R. Pierotti, J. Rouquerol and T. Siemieniowska, *Pure Appl. Chem.*, 1985, **57**, 603.
- 7 C. T. Kresge, M. E. Leonowicz, W. J. Roth, J. C. Vartuli and J. S. Beck, *Nature*, 1992, **359**, 710.
- 8 J. Beck, J. Vartuli, W. Roth, M. Leonowicz, C. Kresge, K. Schmitt, C. Chu, D. Olson and E. Sheppard, *J. Am. Chem. Soc.*, 1992, **114**, 10834.
- 9 ISO 15472:2010, Surface chemical analysis – X-ray photoelectron spectrometers – calibration of energy scales.
- 10 ISO 19318:2004, Surface chemical analysis – X-ray photoelectron spectroscopy – reporting of methods used for charge control and charge correction.
- 11 G. Beamson and D. Briggs, *High Resolution XPS of Organic Polymers*, 1992, p. 26.
- 12 CasaXPS, <http://www.casaxps.com/>, 2013.
- 13 J. P. Vermeulen and H. Jaksch, *Im. Microsc.*, 2005, **1**, 22.
- 14 U. Golla and B. Schindler, *US Pat.*, 6 815 678 B2, 2004.
- 15 V.-D. Hodoroba, S. Benemann, C. Motzkus, T. Macé, P. Palmas and S. Vaslin-Reimann, *Microsc. Microanal.*, 2012, **18**(2), 1750.
- 16 V.-D. Hodoroba, C. Motzkus, T. Macé and S. Vaslin-Reimann, *Microsc. Microanal.*, 2014, **20**, 602.
- 17 V.-D. Hodoroba, D. Akcakayiran, D. O. Grigoriev and D. G. Shchukin, *Analyst*, 2014, **139**, 2004.
- 18 V.-D. Hodoroba, S. Rades and W. Unger, *Surf. Interface Anal.*, 2014, DOI: 10.1002/sia.5426.
- 19 H. Yamada, C. Urata, Y. Aoyama, S. Osada, Y. Yamauchi and K. Kuroda, *Chem. Mater.*, 2012, **24**, 1462.
- 20 M. Vallet-Regi, F. Balas and D. Arcos, *Angew. Chem., Int. Ed.*, 2007, **46**, 7548.
- 21 K. Ma, H. Sai and U. Wiesner, *J. Am. Chem. Soc.*, 2012, **134**, 13180.
- 22 M. Guo, X. Zou, H. Ren, F. Muhammad, C. Huang, S. Qiu and G. Zhu, *Microporous Mesoporous Mater.*, 2011, **142**, 194.
- 23 F. Kleitz, S. H. Choi and R. Ryoo, *Chem. Commun.*, 2003, 2136.
- 24 H.-K. Na, M.-H. Kim, K. Park, S.-R. Ryoo, K. E. Lee, H. Jeon, R. Ryoo, C. Hyeon and D.-H. Min, *Small*, 2012, **8**, 1752.
- 25 M. Yu, L. Zhou, J. Zhang, P. Yuan, P. Thorn, W. Gu and C. Yu, *J. Colloid Interface Sci.*, 2012, **376**, 67.
- 26 S. Huh, J. W. Wiench, J.-C. Yoo, M. Pruski and V. S.-Y. Lin, *Chem. Mater.*, 2003, **15**, 4247.
- 27 S. Che, S. Lim, M. Kaneda, H. Yoshitake, O. Terasaki and T. Tatsumi, *J. Am. Chem. Soc.*, 2002, **124**, 13962.
- 28 J. Zhang, M. Liu, A. Zhang, K. Lin, C. Song and X. Guo, *Solid State Sci.*, 2010, **12**, 267.
- 29 X. Xia, C. Zhou, L. Ballell and A. E. Garcia-Bennett, *ChemMedChem*, 2012, **7**, 43.
- 30 M. Stromme, U. Brohede, R. Atluri and A. E. Garcia-Bennett, *WIREs Nanomed. Nanobiotechnol.*, 2009, **1**, 140.
- 31 C. Zhou, X. Xia and A. E. Garcia-Bennett, *Super-saturating delivery vehicles for poorly water soluble pharmaceutical and cosmetic ingredients*, PCT/EP2011/065959, 2011.
- 32 Ordered porous silica particles for encapsulation of food ingredients and nutraceuticals and encapsulation, patent in submission.
- 33 R. Corkery, A. Feiler, J. A. Grover, C. Dimelow and E. George, *Anti-caking agent for flavored products*, PCT/US2011/028108, 2011.
- 34 B. Fadeel and A. E. Garcia-Bennett, *Adv. Drug Delivery Rev.*, 2010, **62**, 362.
- 35 E. Buhr, N. Senftleben, T. Klein, D. Bergmann, D. Gnieser, C. G. Frase and H. Bosse, *Meas. Sci. Technol.*, 2009, **20**, 084025.
- 36 C. Motzkus, T. Macé, F. Gaie-Levrel, S. Ducourtieux, A. Delvallee, K. Dirscherl, V.-D. Hodoroba, I. Popov, O. Popov, I. Kuselman, K. Takahata, K. Ehara, P. Ausset, M. Maillé, N. Michielsen, S. Bondiguel, F. Gensdarmes, L. Morawska, G. R. Johnson, E. M. Faghihi, C. S. Kim, Y. H. Kim, M. C. Chu, J. A. Guardado, A. Salas, G. Capannelli, C. Costa, T. Bostrom, Å. K. Jämting, M. A. Lawn, L. Adlem and S. Vaslin-Reimann, *J. Nanopart. Res.*, 2013, **15**, 1919.
- 37 Z. Teng, X. Su, Y. Zheng, J. Sun, G. Chen, C. Tian, J. Wang, H. Li, Y. Zhao and G. Lu, *Chem. Mater.*, 2013, **25**, 98–105.
- 38 G. Cliff and G. W. Lorimer, *J. Microsc.*, 1975, **103**, 203.
- 39 M. Watanabe and D. B. Williams, *J. Microsc.*, 2006, **221**, 89.
- 40 R. Gauvin, *Microsc. Microanal.*, 2012, **18**, 915.
- 41 S. Rades, T. Wirth and W. Unger, *Surf. Interface Anal.*, 2014, DOI: 10.1002/sia.5378.
- 42 Y. Li, S. Mao and Z. Ding, in *Monte Carlo Simulation of SEM and SAM images, Applications of Monte Carlo Method in Science and Engineering*, ed. S. Mordechai, InTech, 2011, [www.intechopen.com](http://www.intechopen.com).
- 43 H. Ito, M. Ito, Y. Magatani and F. Soeda, *Appl. Surf. Sci.*, 1996, **100/101**, 152.



- 44 K. Natte, W. Österle, J. F. Friedrich, R. von Klitzing and G. Orts-Gil, *Macromol. Chem. Phys.*, 2012, **213**, 2412.
- 45 K. Natte, J. F. Friedrich, S. Wohlrab, J. Lutzki, R. von Klitzing, W. Österle and G. Orts-Gil, *Colloids Surf., B*, 2013, **104**, 213.
- 46 G. Orts-Gil, K. Natte, R. Thiermann, M. Girod, S. Rades, H. Kalbe, A. F. Thünemann, M. Maskos and W. Österle, *Colloids Surf., B*, 2013, **108**, 110.
- 47 V. Ntziachristos, C. Bremer and R. Weissleder, *Eur. J. Radiol.*, 2003, **13**(195), 2003.
- 48 R. Weissleder, *Nat. Biotechnol.*, 2001, **19**, 316.

