

Cite this: *Chem. Sci.*, 2017, 8, 4565Received 18th December 2016  
Accepted 11th April 2017

DOI: 10.1039/c6sc05530c

rsc.li/chemical-science

## Introduction

Peptides and peptidomimics are attracting increasing attention in both the chemical and pharmaceutical communities as a rich source of drug candidates and/or biological tools.<sup>1</sup> Since the clinical employment of gramicidin S,<sup>2</sup> hundreds of peptides have been identified from natural sources, and a number of them have advanced to the clinic.<sup>3</sup> One major driving force for the growing interest in these substances is their potency to interrupt or control biological events mediated by protein–protein interactions (PPIs), which often involve binding contacts spread over a surface.<sup>4–9</sup> However, native peptides generally suffer from poor pharmacological properties and lack of structural diversity.<sup>10</sup> To address these limitations, various peptide modification strategies have been developed, among which macrocyclization is one of the most prominent methods. Compared to their acyclic counterparts, cyclic peptides generally have highly defined conformations, enhanced cell permeability, thermostability and resistance to proteolytic degradation.<sup>11–13</sup>

Classic methods to generate cyclic peptides often follow a one-component strategy, including head-to-tail lactamization,<sup>14–16</sup> internal disulfide<sup>17</sup> or thioether formation,<sup>18</sup> ring-closing olefin metathesis (RCM)<sup>19–22</sup> and catalyzed cycloaddition of azides to alkynes<sup>23</sup> (Fig. 1a). A number of two-component cyclization procedures rely on external stapling agents, which usually utilize nucleophiles from lysine and cysteine residues. As a representative example, macrocyclization between lysine residues through nitrogen arylation by a perfluoroaryl linker is

# Synthesis of bioactive and stabilized cyclic peptides by macrocyclization using C(sp<sup>3</sup>)–H activation†

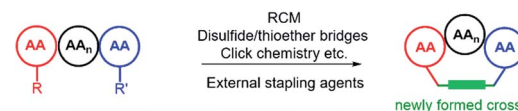
Jian Tang, Yadong He, Hongfei Chen, Wangjian Sheng and Huan Wang<sup>ID</sup>\*

Cyclic peptides have attracted increasing attention in recent years due to their ability to inhibit protein–protein interactions. Current strategies to prepare cyclic peptides often rely on functional amino acid side chains or the incorporation of unnatural amino acids, thus limiting their structural diversity. Here, we describe the development of a highly versatile peptide macrocyclization strategy through a palladium-catalyzed C(sp<sup>3</sup>)–H activation and the synthesis of cyclic peptides featuring unique hydrocarbon linkages between the β-carbon of amino acids and the aromatic side chains of Phe and Trp. We demonstrate that such peptides exhibit improved biological properties compared to their acyclic counterparts. Finally, we applied this method in the synthesis of the natural product celogentin C.

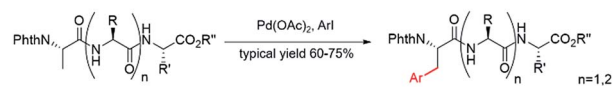
reported by Pentelute and co-workers.<sup>24,25</sup> Recently, several three-component macrocyclization methods were reported by Yudin and co-workers in the synthesis of aziridine- and oxadiazole-containing peptide macrocycles.<sup>26,27</sup>

Despite the success achieved in this field, limitations remain to be overcome. Peptides shorter than five amino acids are generally difficult to cyclize by lactamization and often lead to oligomerization.<sup>14,15</sup> For RCM and azide/alkyne cycloaddition, incorporation of a pair of unnatural amino acids at specific sites is usually required, making the preparation of precursor peptides challenging.<sup>23,28</sup> The use of external stapling agents helps expand the structural diversity of cyclic peptides; however,

a) Current macrocyclization strategies



b) Site-selective C–H arylation of peptides via intermolecular reaction (by Yu and co-workers)



c) Site-selective macrocyclization via intramolecular reaction (this work)

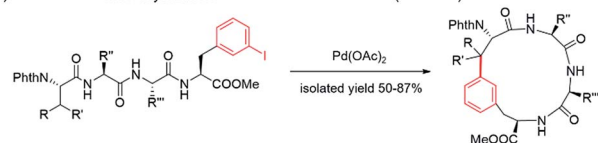


Fig. 1 Peptide macrocyclization strategies and functionalization of the β-carbon of amino acids at the N-terminus of peptides via site-selective C(sp<sup>3</sup>)–H activation. (a) Current peptide macrocyclization strategies. (b) Intermolecular arylation of current peptides at the N-terminus via C(sp<sup>3</sup>)–H activation. (c) Intramolecular macrocyclization of peptides via C(sp<sup>3</sup>)–H activation. Phth = phthaloyl.

State Key Laboratory of Coordination Chemistry, School of Chemistry and Chemical Engineering, Nanjing University, Nanjing 210093, China. E-mail: wanghuan@nju.edu.cn

† Electronic supplementary information (ESI) available. See DOI: 10.1039/c6sc05530c



only amino acids with reactive side chains, such as lysine and cysteine (relative abundance  $\approx 1\%$ ), can be involved in these cyclization reactions.<sup>29,30</sup> Such requirement excludes amino acids with chemically inert aliphatic side chains, which are highly abundant in naturally occurring peptides/proteins, as macrocyclization sites and thus significantly limits the diversity of peptidomimics generated from these protocols. Therefore, strategies that could activate and involve these “inert” amino acids (*e.g.* at their  $\beta$  positions) in macrocyclization are highly desirable.

C–C coupling assisted by metal catalysis through direct C–H activation has now become a fundamental strategy to introduce functionalities to inert C–H bonds<sup>31–35</sup> and has found applications in the synthesis of cyclic peptide natural products.<sup>36,37</sup> In our pursuit to generate peptidomimics with novel architecture for biological studies, we envisioned that peptide macrocyclization by activation of the  $\beta$ -carbon C–H bond of amino acids would help overcome the requirement for reactive amino acid side chains, since almost all amino acids contain a  $\beta$ -carbon (Gly as the only exception). Recently, Yu and co-workers reported their inspiring work in the Pd-catalyzed intermolecular arylation of a  $C(sp^3)$ –H bond of N-terminal amino acid in oligopeptides without the installation of directing groups (Fig. 1b).<sup>38</sup> We postulated that this method would allow peptide macrocyclization through intramolecular arylation with  $\beta$ -carbons of amino acids as stapling sites (Fig. 1c).

In this work, we synthesized a variety of cyclic peptides containing unique C $\beta$ –Ar crosslinks between the  $\beta$ -carbon of amino acids (*e.g.*, Ala, Val) and the aromatic ring of Phe/Trp through a Pd-catalyzed  $C(sp^3)$ –H activation process. This method is highly versatile and compatible with the standard Fmoc SPSS procedure, resulting in cyclic peptides of different sizes. The impact of peptide conformation on the efficiency of macrocyclization is also investigated. Moreover, we demonstrated that peptidomimics generated from this method possess improved stability compared to their linear peptide precursors. In biological studies, cyclic RGD peptide generated by this method exhibited potent binding affinity to integrin. We also successfully applied this methodology to the synthesis of a peptide natural product containing  $\beta$ -carbon-to-Trp indole linkages.

## Results and discussion

### Investigation of Pd-catalyzed macrocyclization

To apply the Pd-catalyzed  $\beta$ -carbon arylation method to peptide macrocyclization, we started our initial attempt on a tetrapeptide **1a** with the sequence of Phth-Ala-Gly-Gly-(*m*-I-Phe)-OMe (Phth = phthaloyl, *m*-I-Phe = *meta*-iodophenylalanine), where the N- and C-termini of the peptide were protected by phthaloyl and methyl group, respectively (Fig. 2, Scheme S1<sup>†</sup>). This sequence was chosen because it contains minimal side chains and *m*-I-Phe provides direct access to peptides containing modified phenylalanine moieties. The installation of protecting groups was meant to minimize the undesired coordination to the Pd(II) catalyst. After optimization of reaction conditions (Table S1<sup>†</sup>), it was found that with **1a** (0.05 mmol), Pd(OAc)<sub>2</sub> (5

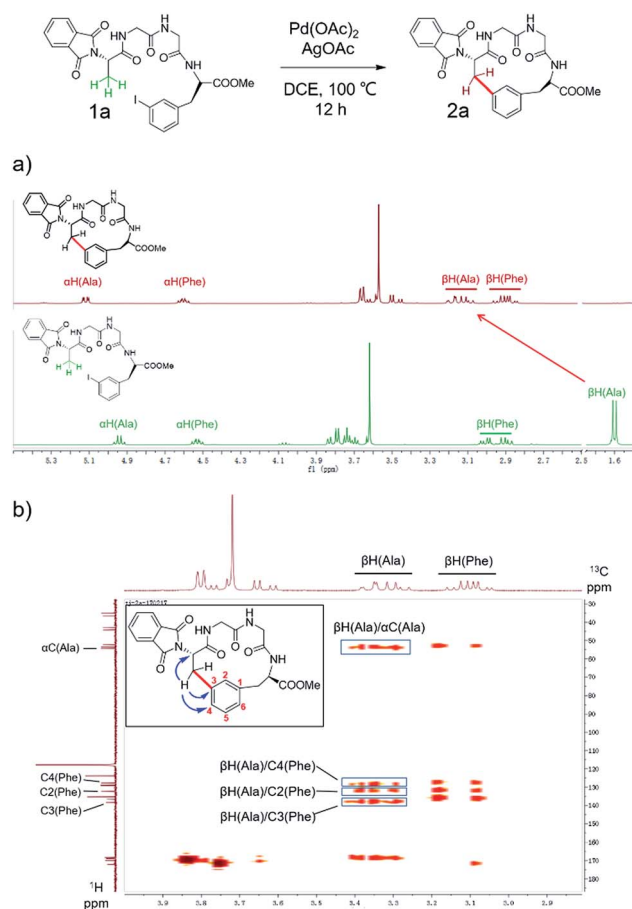


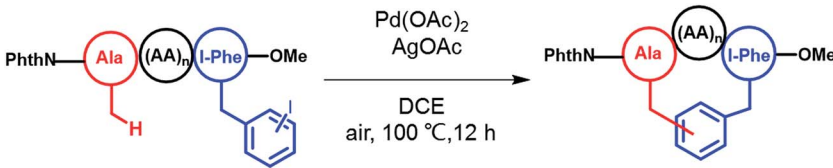
Fig. 2 Pd-catalyzed cyclization of peptide substrate **1a** Phth-Ala-Gly-Gly-(*m*-I-Phe)-OMe and structural characterization of the resulting cyclic peptide **2a** by NMR spectroscopy. (a) <sup>1</sup>H NMR spectra of peptides **1a** and **2a**. Arrows indicate the resonances of the Ala C $\beta$  protons before (bottom) and after cyclization (top). (b) Key HMBC correlations used to assign the linkage between Ala C $\beta$  and Phe C3 in **2a** are indicated by arrows. Full-scale spectra are included in ESI<sup>†</sup>.

mol%) as the catalyst, AgOAc (1.2 equiv.) as the additive, in dichloroethane (DCE) at 100 °C, the macrocyclization proceeded smoothly, and the desired product **2a** was isolated in 62% yield. The resulting cyclic peptide **2a** was characterized by analytical HPLC, high-resolution mass spectrometry (HRMS) and NMR analysis (Fig. 2 and S1<sup>†</sup>). After cyclization, the Ala  $\beta$ H peak shifted significantly (Fig. 2a) in the <sup>1</sup>H NMR spectrum, and the newly formed macrocyclic linkage was further assigned by a diagnostic heteronuclear multiple bond correlation (HMBC) between the Ala  $\beta$ H and the Phe C3 (Fig. 2b). No dimerization products were observed by either HPLC or MS analysis.

With optimized reaction conditions, we next evaluated the efficiency of this macrocyclization strategy on a variety of tetrapeptide sequences. The incorporation of aliphatic amino acids at position 2 (the second residue to the N-terminus), including Leu, Ile and  $\beta$ -branched Val (**2b–2d**), did not interrupt the cyclization process, and all afforded cyclic peptides in good isolated yields (53–58%, Table 1). In addition, the cross-linking occurred solely at the  $\beta$ -carbon of the N-terminal Ala,



Table 1 Sequences of precursor peptides and resulting cyclic peptides synthesized in this work



Entry	Linear peptide	Cyclic peptide	Isolated yield (%)
1a	Phth-Ala-Gly-Gly- <i>m</i> -I-Phe-OMe	2a	62
1b	Phth-Ala-Leu-Gly- <i>m</i> -I-Phe-OMe	2b	55
1c	Phth-Ala-Val-Gly- <i>m</i> -I-Phe-OMe	2c	58
1d	Phth-Ala-Ile-Gly- <i>m</i> -I-Phe-OMe	2d	53
1e	Phth-Ala-Phe-Gly- <i>m</i> -I-Phe-OMe	2e	58
1f	Phth-Ala-Gly-Gly-Ala- <i>m</i> -I-Phe-OMe	2f	62
1g	Phth-Aib-Gly-Gly- <i>m</i> -I-Phe-OMe	2g	52
1h	Phth-Phe-Gly-Gly- <i>m</i> -I-Phe-OMe	2h	19
1i	Phth-Ala-Ser( <i>t</i> Bu)-Gly- <i>m</i> -I-Phe-OMe	2i	60
1j	Phth-Ala-Lys(Boc)-Gly- <i>m</i> -I-Phe-OMe	2j	65
1k	Phth-Ala-Asp(OMe)-Gly- <i>m</i> -I-Phe-OMe	2k	65
1l	Phth-Ala-Gly-Gly- <i>m</i> -I-Phe-Gly-Resin	2l	21
1m	Phth-Ala-Gly-Pro- <i>m</i> -I-Phe-OMe	2m	87
1n	Phth-Ala-Gly-Pro-Ala- <i>m</i> -I-Phe-OMe	2n	63
1o	Phth-Ala-Gly-Pro-Ala- <i>p</i> -I-Phe-OMe	2o	50
1p	Phth-Ala-Arg(Pbf)-Gly-Asp(OMe)- <i>m</i> -I-Phe-OMe	2p	23

highlighting the regioselectivity of this methodology (see ESI† for structural characterization). Phe-containing peptide **1e** and pentapeptide **1f** cyclized efficiently under these conditions as well (Table 1).

Next, we examined peptides with N-terminal residues other than Ala. Linear peptides **1g** and **1h** with N-terminal 2-aminoisobutyric acid (Aib) and Phe, respectively, were therefore synthesized and subjected to macrocyclization under standard conditions. Results showed that the C–H activation of  $\beta$ H (Aib) in peptide **1g** was successful by yielding cyclic peptide **2g** in 52% yield. The crosslink in **2g** showed low diastereoselectivity (d.r. 60 : 40), as determined by  $^1$ H NMR and LC-MS analysis (Fig. S2a†). On the other hand, the activation of  $\beta$ H (Phe) in peptide **1h** was much less efficient and resulted in a cyclization yield of only 19%, whereas a significant amount of deiodination product was observed by LC-MS, indicating the challenge of crosslinking at the  $\beta$ C of a bulky Phe residue. In contrast to diastereoselectivity observed in peptide **2g**, NMR and LC-MS analysis indicated that the resulting cyclic peptide **2h** was a single diastereomer (Fig. S2b†). The vicinal coupling between H $\alpha$  and H $\beta$  of Phe1 of the cyclic peptide **2h** was determined to be 12.0 Hz by  $^1$ H NMR, suggesting an antiperiplanar arrangement of these two protons and therefore an *R* configuration of Phe1 C $\beta$  in peptide **2h**.

To explore the feasibility of performing peptide macrocyclization in solid phase, we first inserted Ser, Lys and Asp residues with side chains masked by standard Fmoc SPPS protecting groups (**1i–1k**). Results showed that these bulky protecting groups at position 2 were compatible with cyclization conditions without lowering the macrocyclization yields (Table 1). Encouraged by these results, using 2-chlorotriptyl chloride

resin and following standard Fmoc SPPS procedure, we synthesized peptide **1l** with the sequence resin-Gly-(*m*-I-Phe)-Gly-Gly-Ala-Phth (Table 1 and Scheme S2†). On-resin macrocyclization was achieved with Pd catalyst in DMF at 100 °C for 16 h. The resulting cyclic peptide was cleaved from the resin by TFA and purified by RP-HPLC. NMR and HRMS analysis confirmed that cyclic peptide **2l** was successfully synthesized; however, the isolation yield was lower than solution-phase reactions (Table 1). The synthesis of **2l** was the first example in which I-Phe is not positioned at the C-terminus of the oligopeptide during cyclization, demonstrating the potential of such method in building in-sequence rings. Interestingly, when *para*- and *ortho*-I-Phe was incorporated at the C-terminus of tetrapeptides, none were cyclized successfully, and only deiodination products were detected by MS analysis (Table S2†). Overall, Pd-catalyzed coupling through C(sp<sup>3</sup>)-H activation was shown to be highly robust and efficient in the preparation of cyclic peptides with novel C $\beta$ -Ar crosslinks (Scheme S3†).

The fact that tetrapeptides with *para*- or *ortho*-I-Phe could not be cyclized prompted us to investigate the principle underlining these observations. We reasoned that the cyclic tetrapeptides resulting from macrocyclization were highly constrained, and therefore, conformational organization of linear precursor peptides must allow two reactive ends to coordinate with the catalyst in close spatial proximity before ring closure. We then synthesized peptide **1m** with a Pro residue at position 3, which introduced a conformational turn into the linear precursor tetrapeptide. To our delight, the cyclization of peptide **1m** proceeded extremely well with almost full conversion as monitored by HPLC with an isolation yield of 87%, indicating the impact of peptide conformation on cyclization efficiency. Pro-



containing pentapeptide **1n** also cyclized efficiently. Interestingly, pentapeptide **1o** (Table 1), which contains a Pro residue and a *para*-I-Phe, cyclized smoothly with a yield of 50% (Scheme S3†). This result suggested that the failure of tetrapeptides containing of *para*- or *ortho*-I-Phe to cyclize was most likely due to conformational bias, instead of inherent reactivity. The insertion of a Pro residue, a conformational turn-inducing element, might relieve the constraint of the cyclic pentapeptide and facilitate C $\beta$ -Ar crosslinking.

### Biological evaluation of cyclic peptides

To evaluate the potential of the C $\beta$ -Ar cyclized peptides for biological applications, we synthesized a novel cyclic RGD peptide **2p** following this procedure (Fig. 3). We first examined the proteolytic stability of **2p** in comparison with its linear counterpart **1p**. Peptides **1p** and **2p** were incubated with endoprotease AspN, which hydrolyzes peptide bonds on the N-terminal side of Asp residue. Results showed that in the presence of AspN, cyclic peptide **2p** remained intact for up to 5 h, whereas its linear counterpart **1p** degraded quickly with a half-life of 50 min and was fully consumed in 5 h, as determined by HPLC and MS analysis (Fig. 3). Similar results were observed when peptides **1j'** and **2j'**, which were resulted from deprotected peptides **1j** and **2j**, were incubated with protease trypsin (Fig. 3), where peptide **1j'** had a half-life of only 21 min, and up to 95% cyclic peptide **2j'** remained intact after 5 h. These results

demonstrate that the C $\beta$ -Ar linkage in cyclic peptides significantly improved their stability against proteolytic degradation.

Next, we examined the binding of cyclic RGD peptide **2p** to U87MG cells, which is a glioblastoma cell line overexpressing the  $\alpha v\beta 3$  integrin. The RGD sequence is well known for its selective binding to integrins when incorporated in proper cyclic structures.<sup>39</sup> Fluorescein isothiocyanate (FITC) was then conjugated to the N-terminal amine of **2p** to yield fluorescent-labelled **2p-FITC**. Linear peptide **1p** was also labelled with FITC as a direct comparison. As a positive control, we employed a commercially available cyclo-(RGDfK) and conjugated a FITC moiety onto the Lys amine. U87MG cells were then incubated with **1p-FITC**, **2p-FITC** and cyclo-(RGDfK)-FITC for 90 min and analyzed by confocal microscopy. As expected, cyclo-(RGDfK)-FITC elicited strong fluorescence staining of cells, whereas the linear peptide conjugate **1p-FITC** yielded low fluorescence, suggesting its weak binding to integrins (Fig. 4a and b). Interestingly, cyclic peptide **2p-FITC** caused slightly stronger fluorescence staining than cyclo-(RGDfK)-FITC, indicating that the cyclic structure introduced by a C $\beta$ -Ar linkage in **2p** significantly enhanced the integrin binding of the RGD sequence. These results nicely demonstrated the applicability of cyclic peptides with C $\beta$ -Ar linkages in biological systems.

### Application in natural product synthesis

Finally, we applied this macrocyclization methodology to natural product synthesis. Several peptide natural products

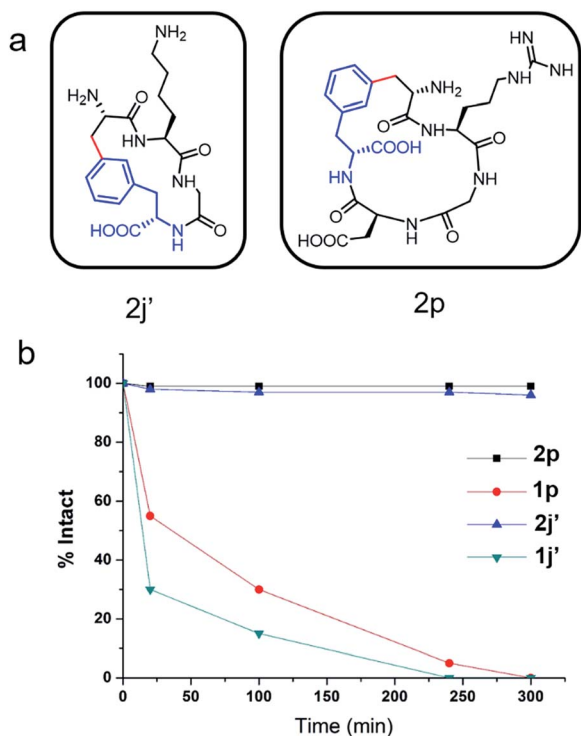


Fig. 3 Cyclic peptides exhibited enhanced resistance towards proteolytic degradation. (a) Chemical structures of cyclic peptides **2j'** and **2p**. (b) Proteolytic degradation assay of stapled peptides **2j'** and **2p** and their linear counterparts **1g** and **1m**. Assay conditions: 50 mM Tris buffer, pH 7.4, 50  $\mu$ M peptide substrates, 0.1 mg ml<sup>-1</sup> protease AspN or trypsin, at 25 °C.

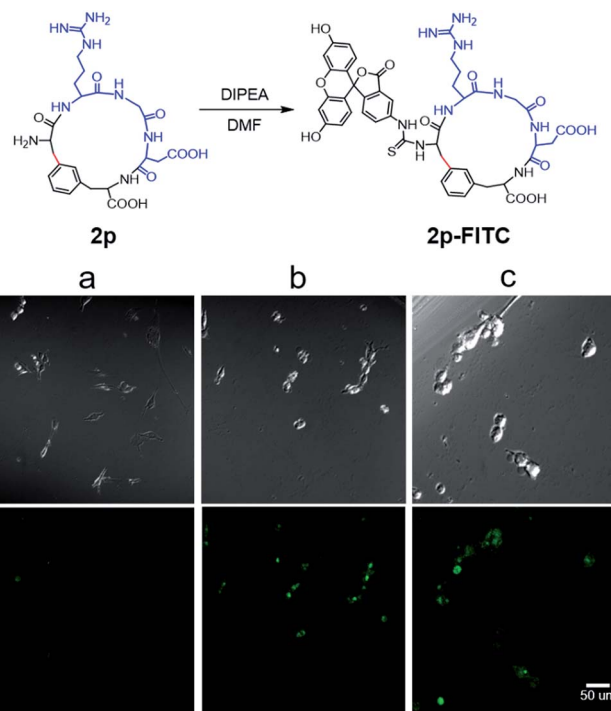
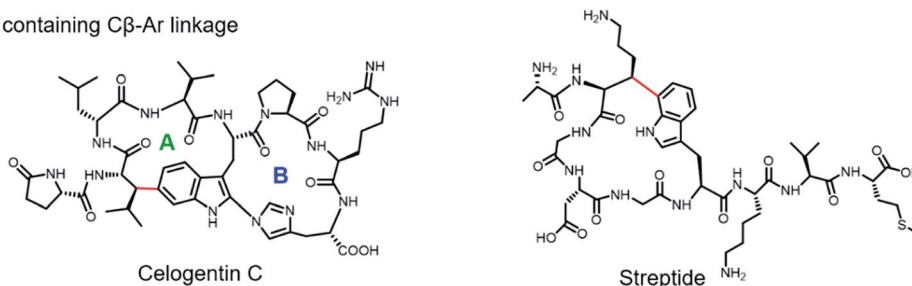
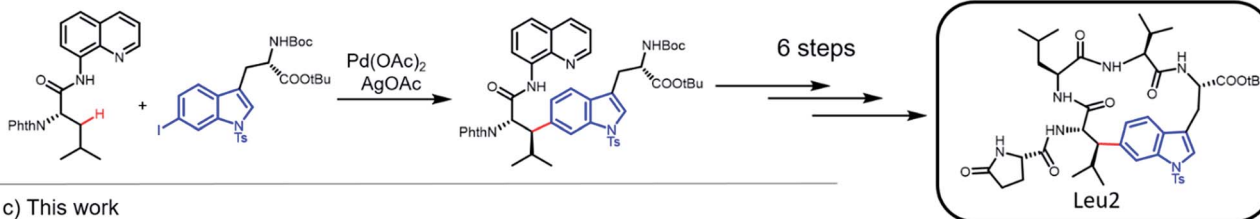


Fig. 4 Synthesis of FITC-labelled cyclic RGD peptide **2p** and its integrin binding assays analyzed by confocal microscopy. (a) Linear peptide **1p-FITC**, (b) cyclo-(RGDfK)-FITC, (c) cyclic peptide **2p-FITC**. All peptides were used at 2  $\mu$ M concentration for the cell binding studies. The RGD motif is in blue, and the C $\beta$ -Ar bond is in red. Scale bar: 50  $\mu$ m.



a) Natural products containing C $\beta$ -Ar linkage

## b) Chen group's work



## c) This work

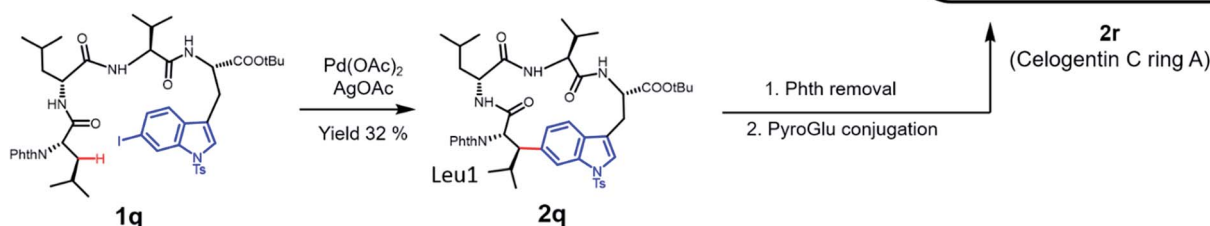


Fig. 5 Strategies for the synthesis of natural products containing C $\beta$ -Ar linkages. (a) Examples of natural products containing C $\beta$ -indole crosslinks. (b) Key step for C $\beta$ -indole linkage formation in the total synthesis of celogentin C through directing-group-assisted C-H activation. (c) Macrocyclization strategy by C-H arylation in this work.

containing C $\beta$ -Ar linkages have been identified in recent years. For example, streptide is a recently characterized ribosomally synthesized and posttranslationally modified peptide (RiPP) featuring a C-C crosslink between Trp C5 and Lys C $\beta$  (Fig. 5a).<sup>40</sup> Celogentin C, a nonribosomal peptide possessing inhibitory activity against tubulin polymerization, contains a direct linkage of Trp C6 to Leu C $\beta$  (Fig. 5a).<sup>41</sup> Towards the total synthesis of celogentin C, Chen and co-workers employed a Pd-catalyzed strategy to construct the Leu1-Trp C-C bond with the assistance of a quinolone directing group.<sup>36,42</sup> We postulated that our C-H activation macrocyclization strategy would allow the construction of the celogentin C-ring A from a precursor peptide containing 6-I-Trp and avoid the introduction and removal of directing groups (Fig. 5c). Accordingly, we synthesized a 6-I-Trp containing precursor peptide **1q** (Table 1) and subjected it to macrocyclization.<sup>36</sup> Gratifyingly, peptide **1q** cyclized smoothly under coupling conditions, affording the desired cyclic peptide **2o** in 32% isolated yield. Structural characterization of **2q** was conducted by HPLC, HRMS and NMR analysis. Product **2q** appeared as a sharp single peak in analytical HPLC, suggesting a single diastereoisomer (Fig. S3<sup>†</sup>). A correlation between Trp C6 and Leu1  $\beta$ H was observed in HMBC analysis, indicating the direct Leu1  $\beta$ C-to-Trp C6 linkage in **2q** (Fig. S4<sup>†</sup>). The large vicinal coupling ( $J_{\alpha\beta}(\text{Leu1}) = 12.0$  Hz) and the absence of correlation in NOESY analysis between H $\alpha$  and H $\beta$  of  $\beta^5$ -Leu1 strongly suggested an antiperiplanar arrangement of these two protons (Fig. S5<sup>†</sup>), meaning that the

configuration of Leu1 C $\beta$  in **2q** is *R* and thus identical to the Leu2 C $\beta$  of the natural product celogentin C.<sup>41</sup> Further derivatizations of **2q** yielded compound **2r**, the ring A of celogentin C. The <sup>1</sup>H NMR and <sup>13</sup>C NMR spectra of compound **2r** is in very good agreement with the same compound reported by Chen's group, which further supports the correct configuration of Leu1 C $\beta$ .<sup>36</sup> This remarkable stereoselective 6-indolation of Leu C $\beta$  in cyclic peptide **2q** suggested that analogous to the palladium complex formed with directing groups,<sup>36</sup> the amide bond *N,N*-biscordinated complex generated during peptide cyclization promoted the formation of the *trans*-palladacycle intermediate (Fig. S6<sup>†</sup>).<sup>37</sup> In addition, the successful formation of the  $\beta$ C-Trp C6 linkage further expands the scope of this methodology to iodine-substituted indoles and  $\beta$ -branched amino acids.

## Conclusions

In this work, we have developed a robust procedure to generate cyclic peptides with C $\beta$ -Ar linkages through Pd-catalyzed C(sp<sup>3</sup>)-H activation, which proceeds smoothly in both solution-phase and solid-phase peptide synthesis. This method allows a diverse set of amino acids to serve as peptide stapling sites and therefore could greatly expand the structural diversity of cyclic peptide libraries. This method has a broad scope of peptide substrates, including tetra- and pentapeptides, and it has been demonstrated as a powerful tool in natural product synthesis by introducing a C $\beta$ -Ar bond with high regio- and



stereoselectivity. In addition, we demonstrated that a RGD cyclic peptide generated through this method has improved proteolytic stability and higher binding affinity to integrin than a commercially available cyclo-(RGDFK). The generation of natural products and peptidomimics of biological importance through this strategy is in progress in our laboratory.<sup>43</sup>

## Acknowledgements

The authors acknowledge the financial support from the National Natural Science Foundation of China (21402091) and the Thousand Talents Program. We would like to thank Prof. Zhuangzhi Shi (NJU) for helpful discussion at the initial stage of the project and Mr Xiao Xiao for confocal microscopy analysis.

## Notes and references

- S. R. Gracia, K. Gaus and N. Sewald, *Future Med. Chem.*, 2009, **1**, 1289–1310.
- G. F. Gause and M. G. Brazhnikova, *Nature*, 1944, **154**, 703.
- V. Marx, *Chem. Eng. News*, 2005, **83**, 17–24.
- A. Sandomenico, S. M. Monti, M. Sabatella, A. De Capua, L. Tornatore, N. Doti, F. Viparelli, N. A. Dathan, C. Pedone, M. Ruvo and D. Marasco, *Chem. Biol. Drug Des.*, 2009, **73**, 483–493.
- M. C. Souroujon and D. Mochly-Rosen, *Nat. Biotechnol.*, 1998, **16**, 919–924.
- P. Chene, *ChemMedChem*, 2006, **1**, 400–411.
- W. L. DeLano, M. H. Ultsch, A. M. de Vos and J. A. Wells, *Science*, 2000, **287**, 1279–1283.
- W. L. Lian, P. Upadhyaya, C. A. Rhodes, Y. S. Liu and D. H. Pei, *J. Am. Chem. Soc.*, 2013, **135**, 11990–11995.
- A. Czarna, B. Beck, S. Srivastava, G. M. Popowicz, S. Wolf, Y. J. Huang, M. Bista, T. A. Holak and A. Domling, *Angew. Chem., Int. Ed.*, 2010, **49**, 5352–5356.
- D. J. Craik, D. P. Fairlie, S. Liras and D. Price, *Chem. Biol. Drug Des.*, 2013, **81**, 136–147.
- G. H. Bird, N. Madani, A. F. Perry, A. M. Princiotto, J. G. Supko, X. He, E. Gavathiotis, J. G. Sodroski and L. D. Walensky, *Proc. Natl. Acad. Sci. U. S. A.*, 2010, **107**, 14093–14098.
- Z. Szewczuk, B. F. Gibbs, S. Y. Yue, E. O. Purisima and Y. Konishi, *Biochemistry*, 1992, **31**, 9132–9140.
- E. M. Driggers, S. P. Hale, J. Lee and N. K. Terrett, *Nat. Rev. Drug Discovery*, 2008, **7**, 608–624.
- J. S. Davies, *J. Pept. Sci.*, 2003, **9**, 471–501.
- A. Thakkar, T. B. Trinh and D. Pei, *ACS Comb. Sci.*, 2013, **15**, 120–129.
- G. K. Nguyen, X. Hemu, J. P. Quek and J. P. Tam, *Angew. Chem., Int. Ed.*, 2016, **55**, 12802–12806.
- M. Gongora-Benitez, J. Tulla-Puche and F. Albericio, *Chem. Rev.*, 2014, **114**, 901–926.
- H. Jo, N. Meinhardt, Y. Wu, S. Kulkarni, X. Hu, K. E. Low, P. L. Davies, W. F. DeGrado and D. C. Greenbaum, *J. Am. Chem. Soc.*, 2012, **134**, 17704–17713.
- H. E. Blackwell, J. D. Sadowsky, R. J. Howard, J. N. Sampson, J. A. Chao, W. E. Steinmetz, D. J. O'Leary and R. H. Grubbs, *J. Org. Chem.*, 2001, **66**, 5291–5302.
- H. E. Blackwell and R. H. Grubbs, *Angew. Chem., Int. Ed.*, 1998, **37**, 3281–3284.
- L. D. Walensky, A. L. Kung, I. Escher, T. J. Malia, S. Barbuto, R. D. Wright, G. Wagner, G. L. Verdine and S. J. Korsmeyer, *Science*, 2004, **305**, 1466–1470.
- C. E. Schafmeister, J. Po and G. L. Verdine, *J. Am. Chem. Soc.*, 2000, **122**, 5891–5892.
- R. Dharanipragada, *Future Med. Chem.*, 2013, **5**, 831–849.
- A. M. Spokoyny, Y. Zou, J. J. Ling, H. Yu, Y. S. Lin and B. L. Pentelute, *J. Am. Chem. Soc.*, 2013, **135**, 5946–5949.
- G. Lautrette, F. Touti, H. G. Lee, P. Dai and B. L. Pentelute, *J. Am. Chem. Soc.*, 2016, **138**, 8340–8343.
- R. Hili, V. Rai and A. K. Yudin, *J. Am. Chem. Soc.*, 2010, **132**, 2889–2891.
- J. R. Frost, C. C. Scully and A. K. Yudin, *Nat. Chem.*, 2016, **8**, 1105–1111.
- C. J. White and A. K. Yudin, *Nat. Chem.*, 2011, **3**, 509–524.
- E. V. Vinogradova, C. Zhang, A. M. Spokoyny, B. L. Pentelute and S. L. Buchwald, *Nature*, 2015, **526**, 687–691.
- L. Mendive-Tapia, S. Preciado, J. Garcia, R. Ramon, N. Kielland, F. Albericio and R. Lavilla, *Nat. Commun.*, 2015, **6**, 7160.
- L. Ackermann, *Chem. Rev.*, 2011, **111**, 1315–1345.
- R. Y. Zhu, M. E. Farmer, Y. Q. Chen and J. Q. Yu, *Angew. Chem., Int. Ed.*, 2016, **55**, 10578–10599.
- M. Gulias and J. L. Mascarenas, *Angew. Chem., Int. Ed.*, 2016, **55**, 11000–11019.
- J. Yamaguchi, A. D. Yamaguchi and K. Itami, *Angew. Chem., Int. Ed.*, 2012, **51**, 8960–9009.
- O. Baudoin, *Chem. Soc. Rev.*, 2011, **40**, 4902–4911.
- Y. Feng and G. Chen, *Angew. Chem., Int. Ed.*, 2010, **49**, 958–961.
- A. F. M. Noisier and M. A. Brimble, *Chem. Rev.*, 2014, **114**, 8775–8806.
- W. Gong, G. Zhang, T. Liu, R. Giri and J. Q. Yu, *J. Am. Chem. Soc.*, 2014, **136**, 16940–16946.
- C. Mas-Moruno, F. Rechenmacher and H. Kessler, *Anti-Cancer Agents Med. Chem.*, 2010, **10**, 753–768.
- K. R. Schramma, L. B. Bushin and M. R. Seyedsayamdost, *Nat. Chem.*, 2015, **7**, 431–437.
- J. Kobayashi, H. Suzuki, K. Shimbo, K. Takeya and H. Morita, *J. Org. Chem.*, 2001, **66**, 6626–6633.
- G. Rouquet and N. Chatani, *Angew. Chem., Int. Ed.*, 2013, **52**, 11726–11743.
- Note: while submitting this manuscript, Albericio *et al.* reported a similar strategy for the preparation of cyclic peptides through C–H activation (*Angew. Chem., Int. Ed.*, 2017, **56**, 314–318). Whereas the disclosed data is in accord with our findings, yields are significantly improved under our cyclization conditions. Moreover, the biological properties of the cyclic peptides are evaluated for the first time along with fapplication of this methodology in natural product synthesis.

