

REVIEW

View Article Online
View Journal | View IssueCite this: *RSC Chem. Biol.*, 2021, 2, 796

Fluorescent proteins of the EosFP clade: intriguing marker tools with multiple photoactivation modes for advanced microscopy

Karin Nienhaus ^a and Gerd Ulrich Nienhaus ^{*abcd}

Optical fluorescence microscopy has taken center stage in the exploration of biological structure and dynamics, especially on live specimens, and super-resolution imaging methods continue to deliver exciting new insights into the molecular foundations of life. Progress in the field, however, crucially hinges on advances in fluorescent marker technology. Among these, fluorescent proteins (FPs) of the GFP family are advantageous because they are genetically encodable, so that live cells, tissues or organisms can produce these markers all by themselves. A subclass of them, photoactivatable FPs, allow for control of their fluorescence emission by light irradiation, enabling pulse-chase imaging and super-resolution microscopy. In this review, we discuss FP variants of the EosFP clade that have been optimized by amino acid sequence modification to serve as markers for various imaging techniques. In general, two different modes of photoactivation are found, reversible photoswitching between a fluorescent and a nonfluorescent state and irreversible green-to red photoconversion. First, we describe their basic structural and optical properties. We then summarize recent research aimed at elucidating the photochemical processes underlying photoactivation. Finally, we briefly introduce various advanced imaging methods facilitated by specific EosFP variants, and show some exciting sample applications.

Received 21st January 2021,
Accepted 27th March 2021

DOI: 10.1039/d1cb00014d

rsc.li/rsc-chembio

^a Institute of Applied Physics, Karlsruhe Institute of Technology, 76049 Karlsruhe, Germany. E-mail: uli@uiuc.edu^b Institute of Nanotechnology, Karlsruhe Institute of Technology, 76021 Karlsruhe, Germany^c Institute of Biological and Chemical Systems, Karlsruhe Institute of Technology, 76021 Karlsruhe, Germany^d Department of Physics, University of Illinois at Urbana-Champaign, Urbana, IL 61801, USA

Karin Nienhaus

Dr Karin Nienhaus is a Research Associate at the Institute of Applied Physics, Karlsruhe Institute of Technology (KIT), Germany. She studied chemistry at the University of Münster, Germany. In 2003, she received her PhD in Chemistry at the University of Ulm, Germany. From 2000 to 2009, she worked as a Research Assistant at the Institute of Biophysics in Ulm, where she was mainly involved in spectroscopic studies of fluorescent proteins and heme proteins. Since 2009, she is employed at KIT. Her work focuses on investigating the molecular details of enzyme-substrate and receptor-ligand interactions and photoactivation processes in fluorescent proteins using various spectroscopic approaches.



Gerd Ulrich Nienhaus

Gerd Ulrich Nienhaus studied Physics and Physical Chemistry at the University of Münster, Germany and received his PhD degree in 1988. In 1990, he joined the Department of Physics at the University of Illinois at Urbana-Champaign, USA, where he is still appointed as an Adjunct Professor. In 1996, he became Professor and Director of the Institute of Biophysics at the University of Ulm, Germany. Since 2009, he is a Professor and Director of the Institute of Applied Physics at the Karlsruhe Institute of Technology (KIT), Germany. His interdisciplinary research ranges from the development of advanced optical microscopes via luminescence marker development to fundamental molecular and cellular biophysics.



Introduction

Optical fluorescence microscopy has become a central experimental technique in the life sciences, allowing researchers to study biological structure and dynamics in specimens ranging from cells to tissues to entire organisms.^{1,2} This development was strongly driven by technological advances of microscopy components, including light sources (lasers), detectors (cameras, photodiodes), micromechanical and optical devices, electronics and computers. Nowadays, fluorescence microscopy with visible and near-infrared light is a highly sensitive, minimally invasive method to investigate live samples on time scales ranging from split seconds all the way up to many days and weeks. More recently, visualization of biological structures has become possible even at the molecular scale through the invention of super-resolution imaging techniques that bypass Abbe's diffraction limit in ingenious ways and offer theoretically unlimited image resolution.^{3–9} Despite all this progress, fluorescence microscopy could not have taken such a central role in the life sciences if it were not for parallel advances in an entirely different area, *i.e.*, the development of luminescent marker tools. By selective and specific staining, biological molecules and structures become visible under the microscope and can be studied without interference from a myriad of other molecules in the specimen.

A vast array of approaches have been accumulated to achieve specific labeling of samples for fluorescence microscopy.^{10,11} To accommodate the requirements of specific imaging experiments, an impressive variety of organic dyes and nanocrystals with intriguing photochemical properties have been synthesized, and intricate conjugation strategies have been devised for their selective attachment to target structures.^{11–13} In this account, we focus on fluorescent proteins (FPs) of the green fluorescent protein (GFP) family, which have become truly enabling tools for fluorescence imaging.^{14–17} Their key advantage over other labeling procedures is their genetic encodability. For example, the gene of a protein of interest can be extended to include the DNA code of a FP and introduced into the genome of a biological system (cell or organism). Subsequently, the sample produces the fluorescent fusion protein; no other preparative procedures are needed for labeling. While this approach is conceptually simple, it may take considerable effort to engineer a fusion protein in which the additional FP domain has minimal adverse effects on the biological function of the protein of interest, *e.g.*, by designing appropriate amino acid linkers and selecting a suitable location for FP insertion. Notably, protein labeling *via* FP fusions has become even more powerful with the advent of CRISPR/Cas9 technology (recognized by the Nobel Prize in Chemistry 2020), which enables facile modification of target genes at their specific locus within the genome.¹⁸ Therefore, FP technology greatly facilitates the selective study of a protein in a cell or organism using fluorescence microscopy, requiring only established and straightforward genome modifications. Remarkably, although GFP was discovered as early as 1962 by Osamu Shimomura in tissue extracts of the jellyfish *Aequorea victoria*,¹⁹ it took more

than three decades until the GFP gene²⁰ was recombinantly expressed in *Escherichia coli* and *Caenorhabditis elegans* by Martin Chalfie and co-workers,²¹ and the advantage of genetic encoding of fluorescence markers was fully appreciated.

FP marker optimization by genetic engineering

All GFP-type proteins are made from polypeptide chains of ~220–240 amino acids that are folded into 11 β -strands forming a barrel-like structure, which is capped by short helical sections and loops at either end, as shown for EosFP in Fig. 1a.^{22–24} A helix running along the central axis of the barrel is interrupted by the chromophore, 4-(*p*-hydroxybenzylidene)-5-imidazolinone (*p*-HBI) and variants thereof in yellow or red FPs, which forms autocatalytically from a tripeptide (His62-Tyr63-Gly64 in EosFP, Fig. 1b). The Gly and Tyr residues are strictly conserved in

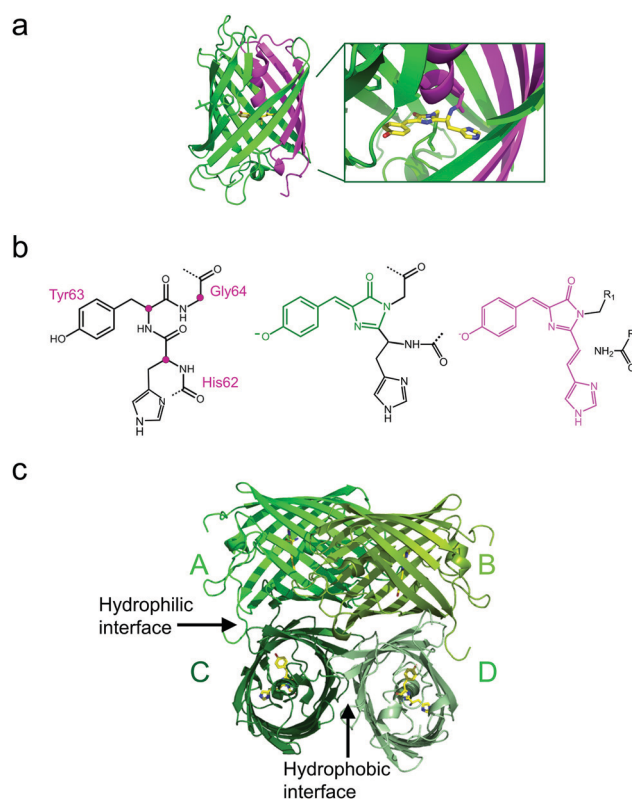


Fig. 1 Overall structure of EosFP, a GFP-type protein. (a) Each monomer folds into an eleven-strand β -barrel, with the ends closed by loops and short α -helical structures. An α -helix running along its axis is interrupted by the chromophore generated from the tripeptide His62-Tyr63-Gly64. It is displayed in stick representation in the barrel and as a close-up. The N- and C-terminal fractions of the β -can that result from cleavage of the EosFP polypeptide chain upon green-to-red photoconversion are colored in magenta and green, respectively. (b) Chromophore-forming tripeptide (left, C α atoms marked with magenta dots) and mature green and red chromophores (right, conjugated π -systems colored in green and red, respectively). (c) Tetrameric arrangement of protomers A–D, showing the hydrophilic AC and BD interfaces and the hydrophobic CD interface.



natural FP sequences, but the first amino acid of the triad may vary. Naturally occurring FPs have serious drawbacks for use as fluorescence markers, and tremendous efforts have been made to optimize them or to endow them with entirely new properties by genetic engineering. In the 1990s, Tsien and coworkers pioneered the engineering of advanced GFP variants, featuring bright fluorescence emission ranging from blue to yellow.²⁵ Subsequently, homologs of GFP were discovered in anthozoa and other animals,^{26–31} so that a wide variety of FP sequences for development of FP markers became available. In some of these FPs, attractive new properties were discovered, notably, fluorescence emission in the red spectral region.^{32,33} Red emission is highly desirable for bioimaging, as cellular autofluorescence and light scattering are markedly reduced in the red spectral region. Other FPs displayed intriguing changes in their fluorescence properties in response to light exposure. This effect, known as photoactivation,^{34–41} is most attractive for fluorescence microscopy and affords new experimental approaches, *e.g.*, pulse-chase imaging and super-resolution single molecule-based localization microscopy (SMLM).

Various biochemical and photochemical properties affect an FP's performance as a fluorescence marker.^{25,42} Biochemical properties that are targeted for FP marker optimization by amino acid modifications include the following: (1) DNA sequences are adjusted for optimal codon usage in cells chosen to express the FP marker. (2) Natural FPs typically form tetrameric (or in some cases dimeric) quaternary structures. Whereas this is not of concern in simple marker applications, *e.g.*, highlighting cellular organelles, cells and tissues,^{43,44} the most prevalent application, *i.e.*, selective protein labeling, requires monomeric FPs. If the FP marker has a tendency to oligomerize, this property is passed on to the fusion protein and typically causes severely compromised biological functions.⁴⁵ Therefore, researchers aim to disrupt the binding interfaces between FP protomers by exchanging amino acids, *e.g.*, by replacing hydrophobic amino acid residues with hydrophilic or even charged ones. Sometimes, a single mutation suffices to render a FP monomeric, as was the case for the dimeric natural *Aequorea* GFP.⁴⁶ However, for anthozoan FPs, monomerization efforts have oftentimes proven extremely difficult.^{47–49} (3) After synthesis in the ribosome, only a fraction of polypeptide chains coding for a FP fold properly and form a functional fluorophore in the process, resulting in a maturation efficiency of less than one. Accordingly, the marker appears less bright (as judged from the overall sample staining), and the number of molecules is underestimated in quantitative fluorescence imaging studies. Therefore, it is highly desirable to optimize maturation by introducing suitable mutations.⁵⁰ (4) Equally important is the temperature dependence of the maturation efficiency. It is typically high up to room temperature, in accordance with the environmental temperature of the organism from which the FP sequence was taken, but markedly declines above. Live-cell imaging of mammalian cell cultures require a temperature of 37 °C, however. Fortunately, the exchange of certain amino acids in the sequence has frequently

been successful to generate thermostable variants expressing well at 37 °C.^{51,52} (5) Chromophore maturation may take from minutes to hours or even days for particular FPs,^{50,53} requiring molecular oxygen (O₂) as the only further ingredient. In live imaging, fast maturation can be important, *e.g.*, in developmental studies, so that marker production can keep up with the processes under study.

Photochemical and photophysical properties of an FP marker can also be improved by genetic engineering, as the protein matrix modulates the chromophore environment in different ways and changes its properties as a marker dye. Accordingly, (1) color tuning of the absorption and emission bands can be achieved by amino acid replacements within (*e.g.*, Tyr to Phe or His) and near the chromophore.²⁵ An important role of the protein matrix is to constrain the dynamics of the *p*-HBI chromophore (or its derivatives) to keep it preferentially in a coplanar configuration.⁵⁴ In fact, *p*-HBI freely diffusing in water is completely non-fluorescent.⁵⁵ Amino acid exchanges that lead to a strengthening of the overall fold or chromophore interactions with the surrounding amino acids (and structural water molecules) can improve both (2) the absorption strength and (3) the fluorescence quantum yield (QY). (4) The photobleaching probability is also likely to depend on the rigidity of the FP scaffold and the enclosed fluorophore. As a case in point, oxygen plays an important role in photobleaching, and its diffusion to the fluorophore may be hindered in a more rigid environment. The photobleaching probability is a crucial performance parameter, as it represents the limited overall number of excitation/emission cycles of the fluorophore. Another important issue is (5) the protonation of the *p*-hydroxyphenyl moiety of the *p*-HBI chromophore, which affects the spectral properties in a major way. The neutral, protonated chromophore is usually non-fluorescent and its spectra are markedly blue-shifted from those of the anionic, deprotonated chromophore. In most (but not all) GFP-type proteins, its population varies with the pH of the protein environment. To ensure that the anionic chromophore is the predominant species at physiological pH, mutations can be introduced near the chromophore to lower its *pK*. Finally, we mention the (6) photoactivation capability, denoting photoinduced modifications of the FP's fluorescence properties. Two modes are being distinguished: Reversible photoactivation (photo-switching) typically arises from chromophore toggling between its *trans* and *cis* configurations, only one of which emits fluorescence with high yield. Irreversible photoactivation (photoconversion) refers to a permanent photochemical modification. Consequently, a non-fluorescent (dark) state may get photoactivated to a fluorescent (bright) state, or a bright state may be turned into another bright state with a different emission color (wavelength). A few FPs even combine reversible and irreversible modes. Photoactivation is a very attractive property, in fact, a prerequisite for some powerful imaging modalities. Consequently, considerable efforts have been made to optimize photoactivation properties of FPs, as we will discuss in detail below, using EosFP and its derivatives as an example.



Photoactivatable EosFP and its engineered descendants

Green-to-red photoconvertible FPs change their emission color in response to light irradiation, most effectively with violet light (wavelength ~ 400 nm). Miyawaki and coworkers were the first to report this property for Kaede, a FP that they isolated from the stony coral *Trachyphyllia geoffroyi*.⁵⁶ Soon thereafter, we introduced EosFP,^{22,57} originating from the scleractinian coral *Lobophyllia hemprichii*. Since then, the class of photoconvertible FPs has been greatly expanded with advanced EosFP variants,^{51,58–61} Dendra2^{62,63} and variants,⁶⁴ KikGr⁶⁵ and its monomeric form mKikGr,⁶⁶ mClavGR2,⁶⁷ mMaple,⁶⁸ pcDronpa,⁶⁹ SAASoti,^{70,71} and a few other proteins.^{31,72,73} Among the latter, the “least evolved ancestor (LEA) protein” is an interesting example of an FP designed in the laboratory.⁷³

Early on, it was realized that photoconvertible FPs enable regional optical marking, which can be exploited for pulse-chase imaging.^{36,56,57,74,75} Selective irradiation tags FPs within a certain region of a specimen by converting them to red emitters, and then they are “chased” by imaging until they photobleach. In their Nobel prize-winning work in 2006, Betzig’s group demonstrated single-molecule localization microscopy (SMLM) as a super-resolution imaging technique, using green-to-red photoconversion of a tandem-dimeric EosFP variant.⁵ Their work triggered efforts to engineer optimized photoconvertible FPs for super-resolution imaging. Remarkably, in EosFP, only a small number of amino acid exchanges sufficed to improve its marker properties and even to endow it with new properties beneficial for imaging. This likely explains its widespread use as a template for further FP development, as shown in the evolutionary tree in Fig. 2. There, we have limited ourselves to FP markers; sensors are not included.

The four protomers A, B, C and D of natural EosFP associate *via* two types of interfaces, one with hydrophobic (AB, CD binding) and one with hydrophilic (AC, BD binding) character, to form a tightly associated tetramer (Fig. 1c).²² Single amino acid exchanges, Val123Thr and Thr158His, were sufficient to break up the AB and AC interfaces, respectively, resulting in dimeric variants, d1EosFP and d2EosFP (Fig. 2). Combining both mutations yielded a bright, monomeric variant, mEosFP.²² It has found widespread application in fluorescence imaging of plants,⁶¹ but not mammalian cells due to its low maturation efficiency above 30 °C. As an intermediate remedy, we designed a “pseudo-monomeric” marker by connecting two protomers of d2EosFP with a 12 amino-acid linker, which expresses well at 37 °C.⁷⁴ Accordingly, this tandem-dimeric variant (tdEosFP) is twice as bright as the monomer and, therefore, attractive for imaging applications for which the label size is not of concern.^{5,76–79} Another immediate descendant of EosFP is its Phe173Ser mutant, denoted IrisFP,⁸⁰ which combines photoconversion and photoswitching in the same FP, thereby enabling pulse-chase imaging with super-resolution *via* SMLM.

Subsequently, we found that a single point mutation in mEosFP, Ala69Val, provided an enhanced temperature

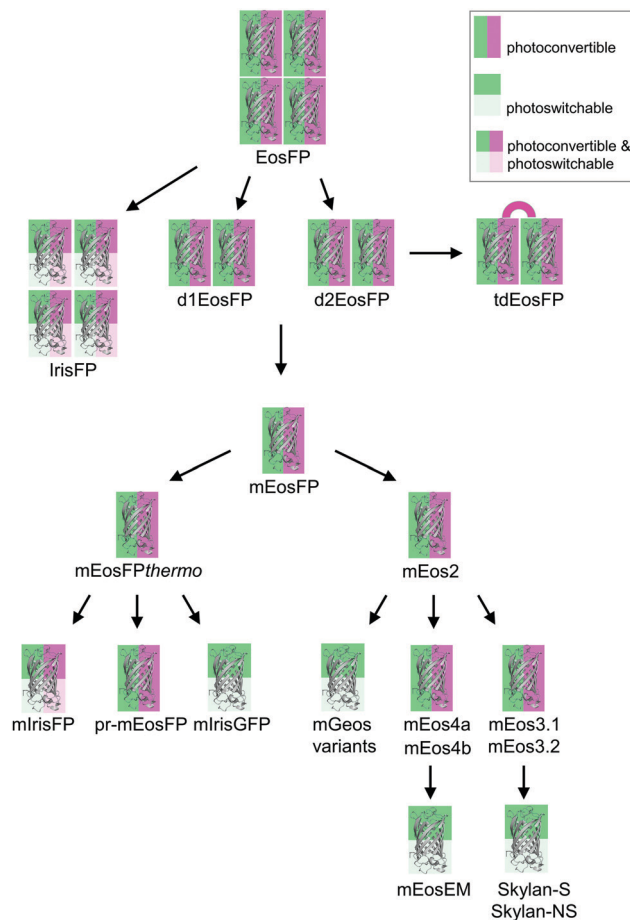


Fig. 2 Evolutionary tree of photoactivatable EosFP. The oligomerization state is represented by the number of protein depictions, the background color encodes the photoactivation mode (photoconvertible, green/magenta; photoswitchable, green/light green; photoconvertible and photoswitchable, green/light green/magenta/light magenta).

tolerance, resulting in a bright marker for 37 °C expression, mEosFP^{thermo}.⁵⁸ As its other parameters remained unchanged within the experimental error, which is not surprising for such a tiny modification of a hydrophobic side chain, we never published its detailed characterization. So far, three further variants originated from mEosFP^{thermo} (Fig. 2). Mutant Ala69Thr (pr-mEosFP) features “primed photoconversion”, *i.e.*, photoactivation using combined blue-green (*e.g.*, 488 nm) and far-red (600–850 nm) irradiation (*vide infra*) instead of 400 nm light.⁸¹ Monomeric IrisFP⁵¹ was also engineered from mEosFP^{thermo} as well as a variant denoted mlrisGFP,⁸² showing reversible photoswitching but not green-to-red photoconversion. It is quite remarkable that such a diversity in photoactivation behavior can arise from a fairly small number of amino acid replacements (Fig. 3a).

In parallel, McKinney *et al.*⁵⁹ also pursued engineering of a monomeric EosFP expressing at 37 °C. Their variant, mEos2, however, had a higher dimerization tendency ($K_D = 20$ μ M) than its parent, mEosFP (233 μ M), or mEosFP^{thermo} (483 μ M),⁶⁰ which can be problematic at higher expression levels. This protein served as a starting point for further modifications. In an attempt



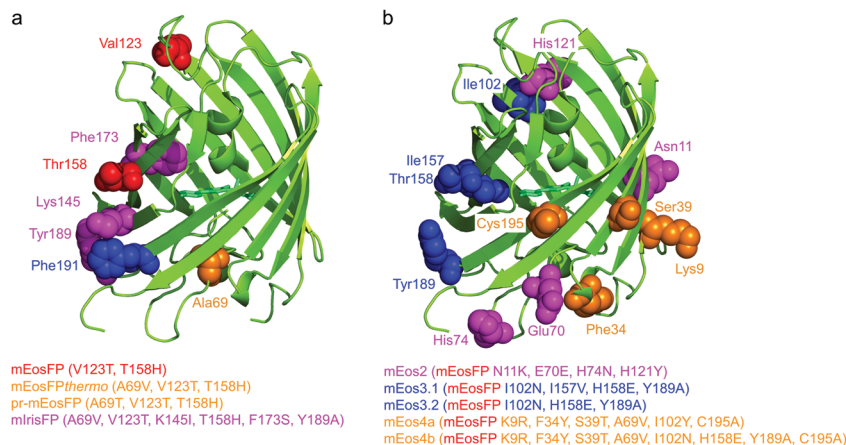


Fig. 3 Genetic engineering of EosFP. Protomers are shown in cartoon representation; mutated residues are depicted in van der Waals representation, using the same colors as for the list of engineered variants below (with sequence changes specified in parentheses). (a) Modifications of EosFP to obtain monomeric mEosFP (red), the thermostable mEosFP_{thermo} and the primable pr-mEosFP variants (orange), and mlrisFP (magenta). (b) Additional modifications of mEosFP to obtain mEos2 (magenta), mEos3.1 and mEos3.2 (blue) and mEos4a and mEos4b (orange).

to improve mEos2, mEos3.1 and mEos3.2 were introduced, reported to be truly monomeric, brighter and faster maturing than Eos2.⁶⁰ Variants mEos4a and mEos4b were engineered that are able to fluoresce and photoconvert in heavily fixed (up to 1% OsO₄), epoxy resin-embedded samples for correlative light and electron microscopy (CLEM).⁸³ A further descendant of Eos4b, mEosEM, was recently reported to resist epon resin embedding after OsO₄ treatment.⁸⁴ Moreover, Chang *et al.*⁸⁵ prepared a series of mutants by replacing His62, the first amino acid in the chromophore tripeptide, which is essential for green-to-red photoconversion, by other amino acids, yielding monomeric green EosFP (mGeos) variants with useful photoswitching capabilities. Amino acid modifications of Eos2 descendants are shown in Fig. 3b.

Optical and structural properties of EosFP-type chromophores

Molecular brightness

Besides the photobleaching probability, molecular brightness is another important quantity that allows microscopists to assess a marker's performance in fluorescence imaging. Molecular brightness is the product of two photophysical quantities, the extinction coefficient, ϵ , measured at the peak of the absorption band, and the fluorescence QY, denoting the probability of photon emission after photon absorption. In Table 1, we have compiled literature values of these quantities for both green and red (anionic) chromophore species of EosFP variants. They are expected to differ somewhat between variants due to the altered structure and dynamics of the chromophore and its environment. Table 1 shows QY values ranging from 0.64–0.91 and 0.47–0.75 for the green and red chromophores, respectively. Interestingly, the two extreme values for the red fluorophore were obtained on the same variant, namely Eos2, by two different laboratories. Thus, we conclude that published QY values should be taken with a grain of

Table 1 Reported peak extinction coefficients, ϵ , and fluorescence quantum yields, QY, of EosFP variants

EosFP variant	Green chromophore		Red chromophore	
	ϵ (M ⁻¹ cm ⁻¹)	QY	ϵ (M ⁻¹ cm ⁻¹)	QY
EosFP	72 000 ⁵⁷	0.70 ⁵⁷	41 000 ⁵⁷	0.55 ⁵⁷
d1EosFP	74 800 ⁵⁷	0.68 ⁵⁷	40 000 ⁵⁷	0.62 ⁵⁷
d2EosFP	57 000 ⁵⁹	0.66 ⁵⁷	33 000 ⁵⁷	0.60 ⁵⁷
	84 000 ⁵⁷		49 000 ⁵⁹	
tdEosFP	65 000 ⁵⁹	0.91 ⁶⁰	32 000 ⁵⁷	0.62 ⁶⁰
	84 000 ⁵⁷		48 000 ⁵⁹	
mEosFP	67 200 ⁵⁷	0.64 ⁵⁷	37 000 ⁵⁷	0.62 ⁵⁷
	72 000 ⁶⁰	0.70 ⁶⁰	41 000 ⁶⁰	0.55 ⁶⁰
mEosFP _{thermo}	27 000 ⁶⁰	0.67 ⁶⁴	10 000 ⁶⁰	0.66 ⁶⁴
	97 200 ⁶⁴	0.84 ⁶⁰	41 300 ⁶⁴	0.65 ⁶⁰
mEos2	56 000 ⁵⁹	0.84 ⁶⁰	41 300 ⁶⁰	0.47 ⁶⁰
	75 400	0.84 ⁸³	46 000 ⁵⁹	0.75 ⁸³
	86 510 ⁸³		53 530 ⁸³	
			61 420 ⁸³	
mEos3.1	88 400 ⁶⁰	0.83 ⁶⁰	33 500 ⁶⁰	0.62 ⁶⁰
mEos3.2	63 400 ⁶⁰	0.84 ⁶⁰	32 200 ⁶⁰	0.55 ⁶⁰
mEos4a	83 530 ⁸³	0.86 ⁸³	61 000 ⁸³	0.71 ⁸³
mEos4b	78 170 ⁸³	0.84 ⁸³	55 500 ⁸³	0.71 ⁸³

salt, even though their determination relative to a standard dye involves a simple measurement. Likewise, ϵ values differ not only between variants, but also for the same variant measured by different laboratories (Table 1). A stunning example is mEosFP_{thermo}, for which ϵ values of 27 000 and 97 000 M⁻¹ cm⁻¹ and 10 000 and 41 300 M⁻¹ cm⁻¹ have been reported for the green and red chromophore species, respectively. As we will briefly discuss in the next subsection, published ϵ values (Table 1) are only “apparent” parameters. Their determination is not trivial, and errors, assumptions and corrections involved in the process can lead to different results, but cannot explain discrepancies by as much as three- to fourfold. To conclude this subsection on a critical note, selecting a FP marker protein based on published parameters may not necessarily guide the user to the best choice.



Optical absorption bands of EosFP-type chromophores and their pH dependence

As a prototypical example, Fig. 4 presents optical absorption data of mEosFP_{thermo} in the pH range 3–10. Spectra of the green form (Fig. 4a) show two absorption bands at 390 and 504 nm, denoted A and B,^{86,87} respectively. Their pH dependence reveals that the proton concentration in the solvent controls the fractions of neutral (phenol, A) and anionic (phenolate, B) green chromophore species residing in the protein interior.²⁵ The variations of the A and B Band amplitudes with pH (Fig. 4c) deviate from a Hendersson–Hasselbalch relation, so a simple one-site protonation reaction does not accurately describe the data. Apparently, multiple protonation steps govern the neutral and anionic species populations, as seen before for other FPs.^{82,88,89} The best fit yields $pK = 5.3 \pm 0.1$ (green lines in Fig. 4c) as the midpoint of the protonation transition. The low pK ensures that the majority of proteins is in the anionic, which is fluorescent form under physiological conditions. Green and yellow FPs usually have $5.0 < pK < 7.0$,⁹⁰ whereas blue and far-red variants often show $pK < 4$.⁹⁰ Interestingly, there is an additional step-wise increase of the B band amplitude at $pH > 8$ in the data in Fig. 4c, reflecting a deprotonation in the chromophore vicinity that causes a further increase of ϵ by *ca.* 20%.

Absorption spectra of red mEosFP_{thermo} in the pH range 3–10 are shown in Fig. 4b. The absorption maxima of the A and B bands of mEosFP_{thermo} are centered on 461 and 572 nm, respectively, and both possess a pronounced vibronic fine structure. Below 400 nm, S_0 – S_2 transitions of the neutral and anionic red chromophores are apparent. As for the green form,

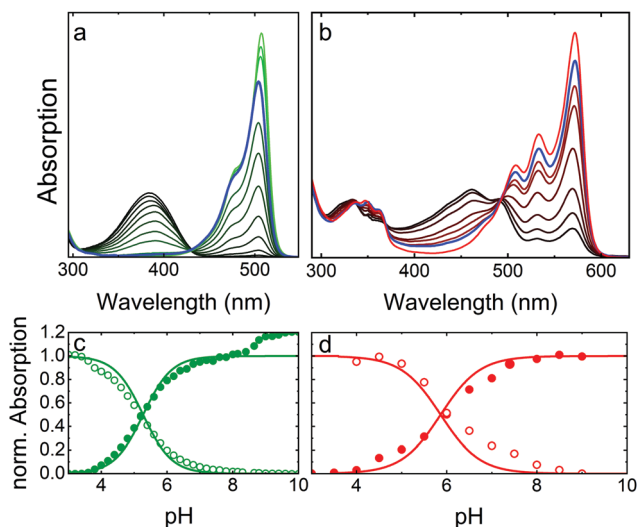


Fig. 4 Optical absorption data of mEosFP_{thermo} in the pH range 3–10. (a) Absorption spectra of the green chromophore; (b) absorption spectra of the red chromophore. The line colors in the two panels vary from (a) black to green and (b) black to red to indicate increasing sample pH. Spectra at pH 7.4 are plotted in blue. (c and d) Normalized peak absorption of the A (open symbols) and B (closed symbols) bands of the (c) green and (d) red chromophores. Fits with the Hendersson–Hasselbalch relation, yielding (c) $pK = 5.3$ and (d) $pK = 5.8$, are included as solid lines.

the pH dependence of the A and B band absorbances (Fig. 4d) does not follow a simple one-site protonation model due to interactions between the chromophore and the protein matrix. Indeed, some FPs do not show a single-step chromophore protonation at all. Instead, there may be constant A and B band populations in a certain pH range^{89,91} or two distinct protonation steps,^{82,88} both bearing witness to the strong electrostatic coupling of the chromophore to the protein environment.^{92,93}

To compare the absorption strengths of different FP species, absorption spectra and, specifically, the peak absorbances of the A and B bands must be converted to extinction coefficients, respectively, by using Beer's law. This requires knowledge of the concentration of our FP solution, which can be determined spectroscopically from the measured absorbance of our FP sample at 280 nm and the corresponding calculated extinction coefficient. We note in passing that mainly tryptophan ($\epsilon_{280} = 5500 \text{ M}^{-1} \text{ cm}^{-1}$) and tyrosine ($\epsilon_{280} = 1490 \text{ M}^{-1} \text{ cm}^{-1}$) residues contribute to the 280 nm protein band.⁹⁴ If, however, our FP sample is not 100% pure, other types of proteins contribute to the 280 nm absorption as well. This results in an artificially inflated FP concentration and, therefore, a smaller extinction coefficient of the B band maximum. Moreover, since we aim for the ϵ value of the pure anionic (B band) species, we either have to choose a pH at which all chromophores are deprotonated, so that the A band fraction is zero, or we have to correct with the known pH dependence (Fig. 4). The just described approach is arguably most often used to determine ϵ values quoted in publications, yielding typical values of $70\,000$ – $80\,000 \text{ M}^{-1} \text{ cm}^{-1}$ for the green EosFP chromophore. It disregards, however, the presence of non-mature (non-fluorescent) FP species, which can be viewed as an impurity in the determination of the protein concentration *via* the 280 nm band absorption. An alternative ϵ determination procedure involves taking absorption spectra before and after base denaturation of the FP sample. Using the peak extinction coefficient of the chromophore of completely denatured GFP at pH 13 ($\epsilon_{447} = 44\,000 \text{ M}^{-1} \text{ cm}^{-1}$)⁹⁵ as a reference, the concentration of green chromophores in the denatured EosFP sample can be determined. This approach allows conversion of the peak absorbance of the B band (before denaturation) into an extinction coefficient, yielding values of $\sim 100\,000 \text{ M}^{-1} \text{ cm}^{-1}$ for the green EosFP chromophore (see mEosFP_{thermo} in Table 1). Once the ϵ value of the anionic (B band) green species has been determined, the one of the red species results from the ratio of the B band peak absorbances before and after photoconversion. Notably, we convert only a small fraction of all chromophores to calculate this ratio, so that the error due to photobleaching is minimized. Finally, the maturation efficiency of the green FP (*ca.* 70–80%) can be calculated from the ratio of the apparent B band peak ϵ values obtained by using the 447 nm and the 280 nm peak extinction coefficients.

Isomerization and protonation states of the chromophore

The *p*-HBI moiety of the chromophore can adopt either a *cis* or a *trans* configuration, which poses a further complication in



addition to protonation. The two configurations are shown for the green EosFP chromophore in Fig. 5a and b, respectively. The isolated *p*-HBI chromophore is known to be thermodynamically more stable in the *cis* form,⁹⁶ but can easily rotate around the phenoxy (P) or imidazolinone (I) bonds of the methene bridge. Note that only rotations around the I-bond change the isomeric state. Bond rotations open non-radiative de-excitation pathways, making the free *p*-HBI dye completely non-fluorescent in solution.^{97–99} Therefore, to ensure a high fluorescence QY, the protein environment must stabilize the chromophore in one configuration or impose steric restrictions

that prevent isomerization. Most natural FPs host a fluorescent *cis* chromophore, with the red-emitting eqFP611¹⁰⁰ being a notable exception.¹⁰¹ Likewise, only a few engineered FPs have a fluorescent anionic *trans* chromophore.^{47,49,52,100–104}

In either isomeric state, the hydroxyphenyl moiety of the chromophore can, in principle, be protonated or deprotonated (Fig. 5). The corresponding A and B absorption bands of the *cis* and *trans* isomers overlap to a large extent, so it is not straightforward to unambiguously identify the isomerization state based on the absorption spectra.^{82,101,103} Fortunately, the *cis* configuration is predominant in EosFP in (dark) equilibrium, which is helpful in studies exploring the complicated photoactivation mechanisms.

Photoactivation mechanisms

Overview

Soon after the discovery of green-to-red photoconversion in Kaede in 2002,⁵⁶ Mizuno *et al.*¹⁰⁵ reported key structural changes resulting from this photoreaction: the polypeptide chain is cleaved between the N α and C α atoms of residue 62 in its chromophore tripeptide, His62-Tyr63-Gly64, and the conjugated π -electron system of the *p*-HBI chromophore is extended to include the imidazole sidechain of His62 (Fig. 5c, d), causing a red shift of its absorption and emission bands. The two chain fragments are tightly associated and stay together after photocleavage (Fig. 1a). These structural changes are characteristic of photoconverting FPs, as subsequently observed in X-ray structures of several green-to-red photoconverters including Kaede,¹⁰⁶ EosFP,²² Dendra2,⁶³ KikGR,¹⁰⁷ LEA⁷³ and pcDronpa.⁶⁹ Whereas the end product of this photoreaction is undisputed, the detailed mechanisms by which it forms are still controversially debated.

Photoconversion with light around 400 nm implies that the reaction is initiated by excitation of the neutral chromophore. Photoconversion *via* excitation of the anionic (green) chromophore with intense light (*e.g.*, 488 nm) has also been reported for some FPs, albeit with low yield.^{62,108,109} Exposure with far-red light (600–850 nm) in addition to 488 nm light irradiation has been shown to greatly enhance the photoconversion yield in some cases.^{81,110,111} Moreover, photoswitching based on reversible *cis-trans* isomerization of the green and red chromophores was observed in several EosFP variants, *e.g.*, in IrisFP.⁸⁰ The involved chromophore states and excitation wavelengths are shown schematically in Fig. 6.¹¹² In the following, we briefly summarize research aiming to shed light on the mechanisms underlying the different photoactivation modes.

Green-to-red photoconversion *via* excitation of the neutral green *cis* chromophore

A variety of mechanisms have been invoked to explain peptide cleavage upon photoconversion, including light-induced β -elimination,¹⁰⁵ unimolecular elimination (E1)¹⁰⁷ and also bimolecular elimination (E2).²² To clarify the reaction mechanism, computational approaches can in general be quite

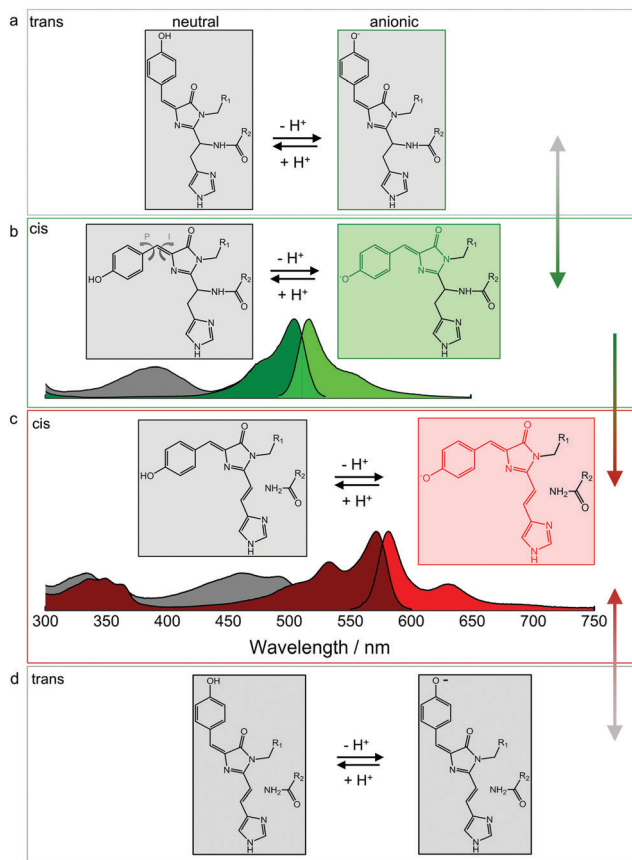


Fig. 5 Isomerization and protonation states of the EosFP-type chromophore. (a) Neutral (left) and anionic (right) green *trans* chromophores. (b) Neutral (left, with arrows indicating isomerization around the phenoxy (P) and imidazolinone (I) bonds of the methene bridge) and anionic (right) green *cis* chromophores. Non-fluorescent and fluorescent species are depicted in grey and green, respectively. Absorption and emission spectra are shown below. Grey: A absorption bands of the neutral *cis* (and/or *trans*) chromophores; dark green: B absorption bands of the anionic (*cis* and/or *trans*) chromophores; bright green: emission spectrum of the anionic *cis* species. *Cis-trans* isomerization is reversible, as indicated by the grey-green double-headed arrow on the right. (c) Neutral (left) and anionic (right) red-emitting *cis* chromophores. Absorption and emission spectra are plotted below (grey: A absorption bands; red: B absorption bands; bright red: emission). Green-to-red photoconversion is irreversible, as indicated by the green-red arrow on the right. (d) Neutral (left) and anionic (right) red *trans* chromophores. *Cis-trans* isomerization is reversible, as indicated by the grey-red double-headed arrow on the right. Adapted from ref. 112 with permission from IOP Publishing, copyright 2016.



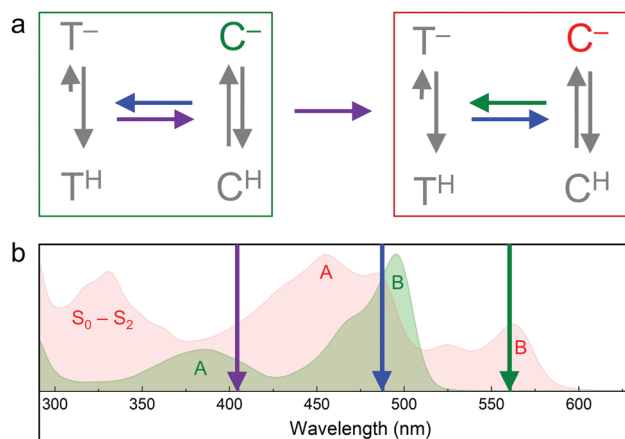


Fig. 6 Transitions between EosFP-type chromophores. (a) Green (green box) and red (red box) chromophore states. C, *cis*. T, *trans*. Superscripts indicate the protonation state (H, protonated; -, deprotonated). Colored arrows represent light-induced transitions: 405 nm (violet), 473 or 488 nm (blue), 532 or 561 nm (green). Grey arrows indicate the pH-dependent ground state equilibria. (b) Absorption spectra of green and red pr-mEosFP, with absorption bands (A, B, S_0-S_2) labeled in the corresponding colors. Wavelengths of photoactivating laser irradiation are indicated by arrows (color-coding as in panel (a)).

helpful. Lelimosin *et al.*¹¹³ used excited-state hybrid quantum-chemical and molecular mechanics to gain more detailed insight into photoconversion in EosFP. Their results suggested that the electronically excited neutral green chromophore (S_1 state) switches to the triplet state (T_1) and back to the ground state singlet (S_0) surface of the red species. Proton transfer from His62 to Phe61 was assumed to take place on the S_1 surface, while backbone cleavage was found to occur on the T_1 surface. By contrast, Li *et al.*¹¹⁴ proposed, based on quantum-chemical and molecular mechanics calculations using the ONIOM(B3LYP:AMBER) method, that photoconversion reactions (chromophore modifications, backbone cleavage) take place in the electronic ground state.

A number of experimental studies also aimed at elucidating mechanistic details. Ultrafast spectroscopic studies revealed that the neutral green chromophore of Dendra2 undergoes excited-state proton transfer and becomes anionic within a few picoseconds.¹¹⁵ It remained unclear, however, if this species is involved in photoconversion. In a spectroscopic study of Kaede, backbone cleavage in the excited state was observed within 20 ps after excitation of the neutral green chromophore, generating the neutral red chromophore.¹¹⁶ This result is in support of earlier reports claiming that efficient photoconversion occurs *via* excitation of the neutral green chromophore.^{105,107,117} Notably, the picosecond timescale of the photoreaction may exclude the involvement of states with different spin multiplicity, which was proposed by Lelimosin *et al.*¹¹³ Based on time-resolved UV/vis and FTIR spectroscopy, Fare *et al.*¹¹⁸ recently suggested that photoconversion of EosFP is initiated by oxidation of the neutral green chromophore in the ground state *via* a tyrosyl radical, most likely Tyr177, that is transiently formed upon light-activation.

Wachter and coworkers¹¹⁹ performed structural studies on variants of a synthetic FP, denoted ALL-GFP, that was derived by statistical inference as the common ancestor of all FPs in the great star coral *Montastraea cavernosa*.¹²⁰ They identified a least evolved ancestor, LEA, which harbors 13 mutations (including Gln62His in the chromophore triad), which was the minimum number necessary for efficient green-to-red photoconversion. A key finding was that the protein matrix around LEA's chromophore is more dynamic than the one of ALL-GFP, permitting substantial chromophore rearrangements in response to photoexcitation. Moreover, it was proposed that chromophore twisting is a pre-requisite for disruption of the electrostatic network and activation of a proton shuttling mechanism required for photoconversion.

From these computational and spectroscopic studies, it is evident that a great deal has been learned about photoconversion by excitation of the neutral species. However, our understanding of the detailed mechanism is still fragmented, and we expect further exciting and clarifying studies in the future.

Photoconversion *via* excitation of the anionic green chromophore

In addition to excitation of the neutral green chromophore with ~ 400 nm light, excitation of the anionic green chromophore with 488 nm light was also found to induce photoconversion in Dendra2,⁶² albeit with markedly lower yield compared to excitation of the neutral form ref. 109. Pantazis and co-workers studied photoconversion on Dendra2 and observed that simultaneous exposure to 730 nm light in addition to 488 nm light for excitation of the green anionic chromophore markedly increased the photoconversion yield. They coined the phrase "primed conversion" for this process and proposed that the priming laser (~ 488 nm) excites the green anionic chromophore and drives it into a primed (intermediate) state.¹²¹ In this state, absorption of a second photon of lower energy (730 nm) triggers the transition to the electronic ground state of the red species.

Recently, Mohr *et al.*⁸¹ and Turkowyd *et al.*¹¹¹ reported in parallel that the enormous, near-IR induced enhancement of green-to-red photoconversion *via* excitation of the anionic green chromophore is characteristic of green-to-red photoconvertible FPs carrying a threonine at sequence position 69. Amino acids in this position can regulate chromophore-protein interactions. In EosFP, Arg66 provides negative charge stabilization on the imidazolinone ring by hydrogen bonding of its guanidino moiety to the imidazolinone carbonyl oxygen.²² If there is a Thr69 instead of alanine, as in the natural Dendra2 sequence⁶³ and mEos2 Ala69Thr (pr-mEos2),¹²² however, the Arg66 side chain hydrogen-bonds to the Thr69 hydroxyl, so that the chromophore becomes overall more flexible. Thus, the interaction of Thr69 with Arg66 is likely responsible for the appreciable photoconversion yield of Dendra2 upon excitation of the anionic green chromophore with 488 nm light in a confocal microscope,⁶² and the enhanced yield upon near-infrared light exposure.

To elucidate the conversion mechanism, we studied the yield of photoconversion as a function of the wavelength of



the red light for Dendra2 and pr-mEosFP. Primed conversion is effective between 600 and 850 nm; the action spectra of the two FPs are similar in shape and show two slightly shifted peaks.⁸¹ Fluorescence quenching experiments revealed that the primed state is a triplet state with a lifetime of ~ 5 ms.⁸¹ By using near-infrared transient absorption spectroscopy, Byrdin *et al.*¹²³ identified a similar, long-lived triplet state after 488 nm excitation in IrisFP and enhanced GFP (eGFP), which do not have a threonine at sequence position 69 (EosFP numbering). They suggested that such a state may be common to all green *p*-HBI chromophores and involved in oxidative photochemical processes such as primed photoconversion or “oxidative redding”,¹²⁴ the oxidant-mediated green-to-red photoconversion of eGFP. If that were the case, the crucial role of Thr69 would then be to facilitate formation of the red chromophore, presumably by enhancing the structural flexibility of the intermediate state. Further spectroscopic studies will likely shed light onto the details of this photoreaction.

Reversible *cis*–*trans* isomerization of the green and red chromophores

In 2008, Adam *et al.*⁸⁰ reported photoswitching in IrisFP, the Phe173Ser mutant of tetrameric EosFP. By using X-ray crystallography and (in crystallo) optical spectroscopy, we showed that IrisFP displays reversible photoswitching between a bright green and a dark state *via cis*–*trans* isomerization of the chromophore, photoconverts irreversibly to the red-emitting state under violet light and exhibits reversible photoswitching also in the red form, again *via cis*–*trans* isomerization of the chromophore. Apparently, the significantly increased free volume in the chromophore pocket due to the amino acid exchange facilitates isomerization. Subsequently, monomeric FP variants were introduced that combine reversible and irreversible photoactivation, mIrisFP⁵¹ and NijiFP.⁶⁴

Reversible photoswitching of the green chromophore was analyzed in great detail in mIrisGFP (mEosFP^{thermo} Phe173-Ser) by using optical spectroscopy.⁸² This IrisFP variant was engineered to be monomeric but lost its green-to-red photoconversion capability in the process. Interestingly, it has His62 in the chromophore triad, which is seen as a necessary⁵⁷ (but apparently not a sufficient) condition for effective photoconversion. We found that isomerization and protonation in mIrisGFP are strictly correlated because of very different acid–base environments that the chromophore’s hydroxyphenyl group encounters in the two isomeric forms, so that $\text{p}K_{\text{cis}} \approx 5.5$ and $\text{p}K_{\text{trans}} > 10$. Consequently, excitation of the anionic *cis* chromophore (using 473 nm light) generates the neutral *trans* chromophore, and subsequent excitation of the neutral *trans* chromophore (using 405 nm light) induces back isomerization to the anionic *cis* state. Interestingly, *cis*–*trans* isomerization was much more efficient by exciting the neutral, non-fluorescent *cis* chromophore with 405 nm light rather than the anionic *cis* chromophore at 473 nm. This observation can be rationalized by quantum-chemical calculations by Olsen *et al.*,¹²⁵ who found a barrierless energy surface for excited-state isomerization for the neutral but not for the

anionic chromophore. Colletier *et al.*¹²⁶ studied photoswitching of green IrisFP from the non-fluorescent *trans* to the fluorescent *cis* state by time-resolved absorption spectroscopy. They found evidence of three intermediate states, two with picosecond and one with microsecond lifetimes, associated with fast chromophore isomerization in the excited state and slow proton transfer in the ground state, respectively.

Evidence is mounting that reversible photoswitching is common to all EosFP variants, although with vastly different yields. For example, Thedie *et al.*¹⁰⁸ showed that green mEos2 embedded in polyvinylalcohol can be switched off by 488 nm or strong 561 nm light. As the green-emitting state could readily be recovered by 405 nm light irradiation, the dark state was associated with a protonated chromophore either in a twisted or in a *trans* configuration. Green-to-red photoconversion of this dark state *via* 405 nm light exposure was not observed, however. A protonated and twisted chromophore was also generated by irradiation of the green anionic *cis* chromophore in the FP LEA.¹²⁷ In this work, it was suggested that this state may be able to photoconvert upon 405 nm irradiation, but that photoswitching back to the anionic *cis* state is much more likely. For green mEos4b, a long-lived dark *trans* state was found upon 488 nm irradiation and characterized in detail.¹²⁸ Based on kinetic crystallography, molecular dynamics, and Raman spectroscopy data, it was found that the relative stability of the *cis* and *trans* chromophores, judged from the number of hydrogen bonds holding it in place, is an important factor controlling the switching kinetics. Energetic issues of chromophore stabilization were also addressed in recent work by Boxer and co-workers,¹²⁹ who modified the tyrosine moiety of the *p*-HBI chromophore in Dronpa2 using amber suppression. Their systematic analysis emphasizes the important role of the chromophore’s charge distribution for modulating the energy surfaces of the singlet ground and excited states in response to I and P bond twisting.

Furthermore, there are also observations of photoswitching within the red form of photoconverting EosFP variants. Sun *et al.*¹³⁰ investigated the effect of formaldehyde fixation on the photophysical properties of mEos3.2. From their experiments, they concluded that a fraction of red-emitting mEos3.2 molecules enter a long-lived dark state upon 405 nm irradiation from which they could be recovered by 561 nm irradiation. Recently, Bourgeois and coworkers¹³¹ also identified a long-lived dark state in the fluorescence emission from individual, red-converted mEos4b molecules. X-ray crystallography revealed that the dark-state chromophore is highly dynamic and adopts a “frustrated” *trans* conformation, with its hydroxyphenyl group bent out of plane to avoid steric clashes with a neighboring residue (Ile157). The absorption maximum at ~ 475 nm and the finding that re-isomerization occurs upon 405-, 473- and 488 nm light illumination suggested that the *trans* chromophore is protonated (see Fig. 6b).

Our mechanistic understanding of the photochemical processes in EosFP variants is still incomplete, as shown in this section. Nevertheless, their heuristic optimization for specific imaging experiments has been enormously successful, as shown in the following section.



Advanced optical imaging with EosFP variants

Pulse chase imaging with conventional fluorescence microscopy

Optical pulse-chase imaging is a powerful technique to observe protein dynamics in live cells, tissues, and organisms labeled with a protein of interest fused to a photoconvertible FP. After imaging by excitation of the initially green FP, a subpopulation of molecules is selected and photoconverted by focused light irradiation to their red-emitting state. Subsequently, migration of these “tagged” molecules is followed in the red color channel without interference from newly expressed green-emitting proteins. 405 nm photoconversion light (typically from a GaN diode laser) is well separated in wavelength from photoexcitation light of green (e.g., 473 or 488 nm) or red (e.g., 532 or 561 nm) FP fluorophores (see Fig. 6b), so unintentional photoconversion by fluorescence excitation is not an issue.

Fig. 7 shows examples of optical pulse-chase experiments. In Fig. 7a, the mRNA of tetrameric EosFP was microinjected into a *Xenopus laevis* oocyte. At developmental stage 3, one of the four cells was irradiated with 405 nm light to selectively photoconvert markers in this cell to the red state; the descendant cells were subsequently tracked over time. For organelle tracking, mitochondria in rabbit kidney cells were labeled with tdEosFP

fused to a mitochondrial targeting signal. After photoconversion of individual mitochondria, migration as well as fusion and fission of mitochondria could be observed (Fig. 7b). Fig. 7c shows protein tracking in live cells at 37 °C using the tubulin-binding protein RITA¹³² fused to mEosFP^{thermo}. After photoconversion in the region marked by the circle, red-emitting RITA fusion proteins appeared within 20 s in the region marked by the square in the leftmost image (see close-ups at 0, 20 and 40 s on the right).

SMLM and super-resolution pulse chase imaging

Super-resolution SMLM is a camera-based widefield microscopy technique that relies on the localization of individual fluorophores.^{5–7} Oftentimes, SMLM is carried out with photoactivatable FPs, using either green-to-red photoconversion or reversible photoswitching. Suitable light irradiation ensures that only a small number of fluorophores are in the emitting state in a single camera frame (dwell time of milliseconds) and imaged until they cease to emit, either due to photobleaching or entering a transient, long-lived dark state. In each image, the spots from only a few, randomly activated fluorophores are not likely to overlap spatially. Therefore, the center of gravity of all photon positions measured for an individual fluorophore before photobleaching can be precisely computed and taken as an estimate of the fluorophore location. The final image is reconstructed by superimposing all measured fluorophore locations from a large number (typically 10^2 – 10^4) of camera frames (Fig. 8).^{133,134}

For SMLM with photoconvertible EosFP variants, we irradiate the sample with low-intensity 405 nm (Fig. 8a) or dual-color (primed) photoconverting light (Fig. 8b). Therefore, only a small number of green fluorophores turn red within each camera frame and are subsequently localized by imaging with, e.g., 532- or 561 nm excitation light in the red color channel. Photoswitchable EosFP variants are so-called “negative” photoswitchers,^{38,135–137} i.e., upon excitation of their anionic fluorescent species (with 473- or 488 nm light for green-emitting FPs) off-switching competes with fluorescence. Thus, imaging with simultaneous low-intensity 405 nm activation light switches only a small number of fluorophores to the on-state within each frame so that they can be localized individually (Fig. 8c).

A FP marker that combines both photoactivation modes such as mIrisFP permits pulse-chase imaging experiments with sub-diffraction resolution in live cells by using dual-color SMLM.⁵¹ Green-to-red photoconversion allows for photo-induced tagging and chasing of a subset of proteins in the cell, as discussed in the previous subsection, and the photoswitching capability of the green and red fluorophore species can be used for SMLM (Fig. 8c). Notably, this imaging scheme requires that the probability of photoconversion is less than the one of photoswitching the green chromophore with 405 nm light.

We first demonstrated super-resolution pulse-chase imaging in experiments aimed to visualize the dynamics of focal adhesion complexes, which are known to continuously assemble and disassemble during cell migration. For imaging, we used live HeLa cells expressing a paxillin–mIrisFP fusion protein after

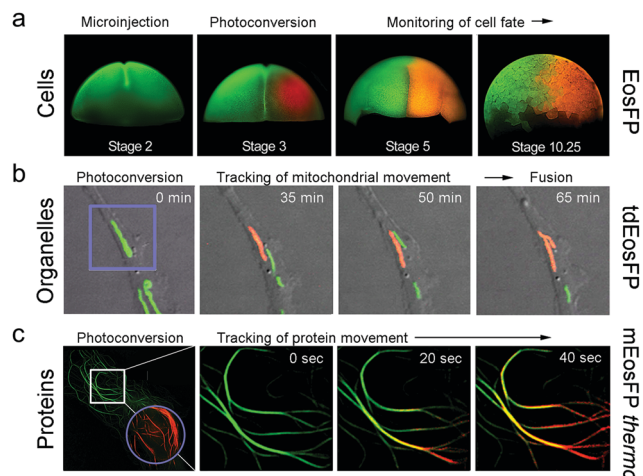


Fig. 7 Application of EosFP and variants in pulse-chase experiments. (a) Cell tracking. The mRNA of tetrameric EosFP was microinjected into a *Xenopus laevis* oocyte, so that all descendant cells express the marker as shown for stage 2 (two cells). At stage 3 (four cells), EosFP molecules in one cell were selectively photoconverted to the red state and the descendant cells were tracked over time. (b) Organelle tracking. Mitochondria in rabbit kidney cells were labeled with tdEosFP fused to a mitochondrial targeting signal. After photoconversion in the region marked by the violet square by focused 405 nm irradiation, the red-labeled markers were followed over time. (c) Protein tracking. Parts of the cytoskeleton of a HeLa cell are highlighted by RITA–mEosFP^{thermo}. After photoconversion of the FPs in the region marked by the violet circle at time zero, red-emitting RITA proteins appeared within 20 s in the region marked by the white square in the leftmost image (see close-ups at 0, 20 and 40 s on the right). Adapted from ref. 58 with permission from Wiley-VCH, copyright 2011.



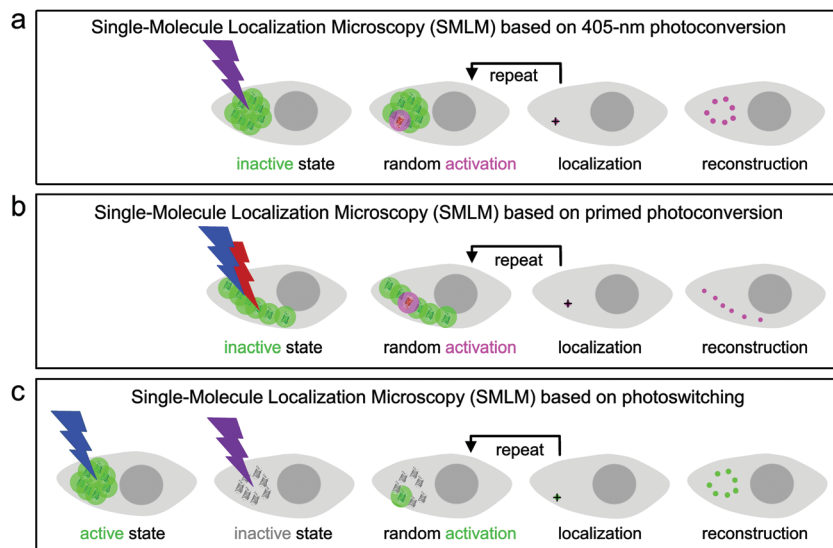


Fig. 8 Schematic depictions of SMLM. The fluorescence emission properties of the inactive (“off”) and active (“on”) chromophore species are indicated by the color code of the lettering. Grey: dark, non-emitting; green: green-emitting; magenta: red-emitting. (a) SMLM based on irreversible green-to-red photoconversion by using 405 nm light activation. (b) SMLM based on photoconversion by using dual-color (488 nm/ ~700 nm), *i.e.*, primed light activation. (c) SMLM based on reversible photoswitching (shown for the green chromophore).

transfection. Paxillin is a multidomain adaptor protein and a crucial component of focal adhesions, as shown in the diffraction-limited image obtained by total internal reflection (TIRF) microscopy (Fig. 9a). First, a SMLM image of focal adhesion points was taken, using photoswitching of green mIrisFP (Fig. 9b). Then, mIrisFP molecules in the region marked by the violet oval in Fig. 9b were photoconverted to the red form. After 75 s, the SMLM image taken using photoswitching of red mIrisFP reveals that a significant fraction of the tagged molecules appeared in locations outside the irradiated region (Fig. 9c). A patch of focal adhesions (marked with a circle in Fig. 9b–d) was already present while the green image was taken (Fig. 9b) and grew in strength over the following 600 s by recruiting red-converted paxillin–mIrisFP from the photoconversion region (Fig. 9c and d).

Dual-channel SMLM

Oftentimes, simultaneous imaging of two target proteins with sub-diffraction resolution is desirable, *e.g.*, to analyze their mutual interaction. Dual-channel SMLM can be realized by using fluorescent markers with different photoactivation mechanisms, *e.g.*, mEosFP*thermo* and mIrisGFP. The following

imaging strategy ensures complete decoupling of the two channels: First, a SMLM image of mEosFP*thermo* is captured in the red channel using 405 nm photoconversion and 561 nm excitation light. Once all green mEosFP*thermo* molecules are depleted by photoconversion and subsequent bleaching, a SMLM image of mIrisGFP is acquired in the green channel using 473 nm (off-switching) excitation and 405 nm (on-switching) light.

We have employed this approach to study desmin, a muscle-specific intermediate filament protein, in live cells. Desmin mutations have been implicated in various muscle diseases and are known to cause formation of protein aggregates. To mimic the clinically relevant heterozygous situation, we transfected SW-13 (adrenal cortex carcinoma) cells with equal amounts of plasmid for co-expression of mIrisGFP fused to wild-type desmin and mEosFP*thermo* fused to desmin mutant Asn116Ser (and other variants).¹³⁸ Notably, SW-13 cells do not express desmin on their own. Dual-channel SMLM revealed that filaments as well as aggregates existed within the same cells, both of them containing wild-type and Asn116Ser mutant desmin (Fig. 10). By contrast, homozygous transient expression revealed that wild-type desmin assembled into filamentous networks, whereas the Asn116Ser mutant formed cytoplasmic

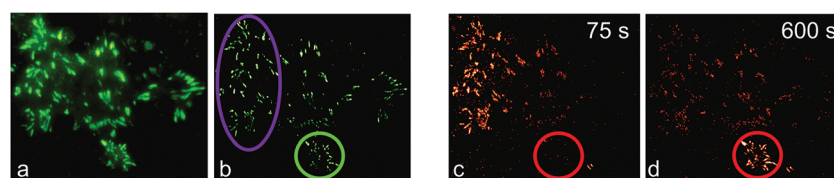


Fig. 9 Dual-color SMLM combined with pulse-chase imaging on a live HeLa cell. (a) TIRF microscopy image of green paxillin–mIrisFP located at focal adhesions. (b) SMLM reconstruction using photoswitching of green mIrisFP. Afterwards, mIrisFP molecules in the region marked by the violet oval were irradiated for 30 s with 405 nm light for green-to-red photoconversion. (c and d) SMLM images of red paxillin–mIrisFP (c) 75 s and (d) 600 s after photoconversion.



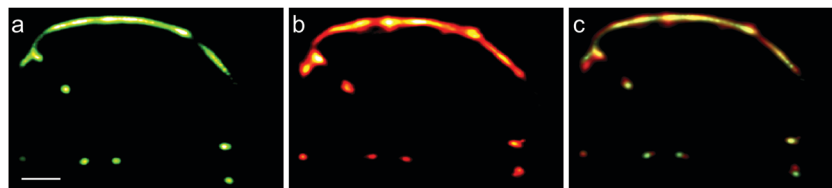


Fig. 10 Dual-channel SMLM of SW-13 cells co-expressing wild-type desmin fused to mlrisGFP and desmin mutant Asn116Ser fused to mEosFP $_{thermo}$. (a and b) SMLM images of (a) the wild-type desmin fusion protein using photoswitching of mlrisFP and (b) the mutant fusion protein using 405 nm photoconversion of mEosFP $_{thermo}$. (c) Dual-color (overlay) SMLM image. Scale bar, 1 μ m. Adapted from ref. 138 with permission from American Society for Biochemistry and Molecular Biology, copyright 2012.

aggregates. Interestingly, the localization patterns were found to vary from mutant to mutant.¹³⁸

Primed conversion offers an alternative approach to dual-channel super-resolution SMLM, requiring only a single wavelength for fluorescence excitation. To this end, we use two photoconverting FP markers, one capable of regular 405 nm photoconversion and the other one of primed photoconversion. We can then distinguish the two FPs, which have essentially identical spectral properties, solely on the basis of their susceptibility to the different photoconversion methods.

To demonstrate this approach, we fused (405 nm converting) mEos2 to E-MAP-115¹³⁹ and (primeable) pr-mEos2 to Lifeact¹⁴⁰ to visualize microtubules and actin fibers, respectively. In the regular wide-field image, the green-emitting mEos2 and pr-mEos2 are indeed indistinguishable (Fig. 11a). Then, we collected a SMLM image of the red-emitting LifeAct-pr-mEos2 using primed photoconversion (Fig. 11b). Subsequently, we imaged the remaining E-MAP-115-mEos2 markers, which do not convert under primed conversion illumination, by SMLM using 405 nm photoconversion (Fig. 11c). The overlay image of the two channels is shown in Fig. 11d.

Quantitative SMLM approaches

Quantitative SMLM goes beyond mere imaging and can provide insight into biomolecular dynamics, clustering and oligomerization of proteins in biological systems.¹³³ SMLM lends itself to protein quantification, as photons are collected from each individual photoactivated FP until, in the ideal case, its

fluorophore photobleaches. However, FPs typically have long-lived, non-emissive states from which they can recover thermally or by light-activation.¹⁴¹ Thus, they undergo multiple, temporally separated activation-deactivation cycles, leading to overcounting the FPs or FP fusion constructs. By contrast, undercounting can result from incomplete maturation and photoconversion. For accurate counting, it is therefore important to characterize the photophysical properties of the FP label and include this information in the analysis.^{142–144} By taking the number of photophysical (bright and dark) states, the kinetics of inter-conversion, and the fraction of active fluorophores into account, the number of molecules can be determined from the blinking statistics. Hummer *et al.*¹⁴⁵ used this approach to extract oligomerization states of membrane-bound CD86-mEos2, VSVG-mEos2, and CD80-mEos2 from SMLM data.¹⁴⁶ Furthermore, Krueger *et al.*¹⁴⁷ used quantitative SMLM to determine the oligomerization state of the toll-like receptor TLR4 fused to mEos2 in HEK 293 cells in the presence and absence of the co-receptors MD2 and CD14 and in response to different lipopolysaccharide ligands.

Manley *et al.*⁷⁸ combined SMLM with single-particle tracking (SPT). By taking successive SMLM image frames of the membrane proteins Gag and VSVG fused to tdEosFP and linking the signals of the same molecule in consecutive frames according to their proximity, they reconstructed short single-molecule trajectories. Here, sequential photoactivation of a small set of FP molecules in each image facilitates linking the signals associated with a particular FP over successive images and allows tracking at a much higher fluorophore density than in traditional SPT, where all fluorescent labels are simultaneously active.

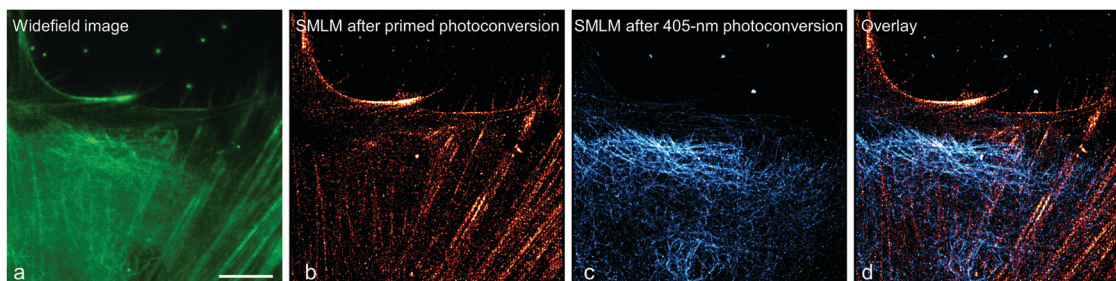


Fig. 11 Sequential dual-channel SMLM using EosFP variants with orthogonal green-to-red photoconversion modes. (a) Widefield image of a HeLa cell, with actin filaments and microtubules labeled with LifeAct-pr-mEos2 and E-MAP-115-mEos2, respectively. The green emission from the two markers is indistinguishable. (b) SMLM of red-converted LifeAct-pr-mEos2 using primed photoconversion (488/642 nm). (c) SMLM of red-converted E-MAP-115-mEos2 using 405 nm photoconversion, with the fluorescence of red-emitting mEos2 depicted in blue color to distinguish the two markers in the overlay shown in (d). Scale bar, 10 μ m. Adapted from ref. 81 with permission from John Wiley and Sons, copyright 2017.



In our lab, we have studied the transport of vesicles to and from the hyphal tip of live *Aspergillus nidulans* cells by combining SMLM with high-speed pulse-chase imaging.¹⁴⁸ We found that the chitin synthase ChsB (fused to mEosFP_{thermo}) was transported from the cell body to the hyphal tip and *vice versa* at two different speeds. By using motor protein deletion mutants, the fast movements (7–10 $\mu\text{m s}^{-1}$) were assigned to transport of secretory vesicles loaded with ChsB by kinesin-1, and the slower ones (2–7 $\mu\text{m s}^{-1}$) to transport of early endosomes loaded with ChsB by kinesin-3.

Correlative light and electron microscopy (CLEM)

Multi-channel imaging can also be performed by using two entirely different modalities, such as electron microscopy (EM), optical microscopy, Raman microscopy or magnetic resonance imaging. Such correlative approaches can provide complementary information, as they are generally based on different mechanisms for contrast generation. Correlative light and electron microscopy (CLEM) combines EM for ultrastructural analysis with optical microscopy, most often, fluorescence microscopy for visualizing proteins or organelles that are specifically tagged by fluorescent markers. This approach has become much more powerful with the advent of super-resolution optical microscopy, which closes the resolution gap between EM and optical microscopy.

Before EM data collection, samples are typically fixed, stained with osmium tetroxide (OsO_4), a widely used contrast agent that binds to lipid membranes, and embedded in a resin. Unfortunately, most FPs respond to OsO_4 staining with a loss of fluorescence, precluding their use in CLEM. To combine transmission EM (TEM) and SMLM based on labeling with photoconverting EosFP-type markers, Paez-Segala *et al.*⁸³ engineered and characterized a variety of mEos2 mutants. Two of them, mEos4a and mEos4b, were much more resistant to heavy staining (1%) with OsO_4 than mEos2, mEos3.1 and mEos3.2, both in the green and, after photoconversion, in the red forms, thus enabling correlative SMLM and high-quality TEM. Very recently, Fu *et al.*⁸⁴ introduced three more mutations into mEos4b to obtain variant mEosEM, for which they reported an improved performance after sample embedding in epon, an epoxy resin that is harder than the low-polymerization-temperature hydrophilic resin, glycidyl methacrylate, used by Paez-Segala *et al.*⁸³ and better preserves the ultrastructure of the specimens. We note that, after epon embedding, mEosEM did no longer photoconvert but showed reversible photoswitching in the green form, which can be exploited for SMLM.

Nonlinear structured illumination microscopy

Structured illumination microscopy (SIM) is a linear fluorescence imaging technique, offering up to two-fold resolution enhancement by applying stripe-like periodically patterned illumination.¹⁴⁹ Its nonlinear extension, saturated structured illumination microscopy (SSIM),¹⁵⁰ enables super-resolution imaging by using high excitation power to drive fluorophores into saturation. A non-linear excitation/emission response, which is the origin of the additional resolution enhancement of SSIM,¹⁵¹ can also be generated with photoswitchable FP markers, using orders of magnitude less laser

power, however. This imaging modality was termed patterned activation nonlinear structured illumination microscopy (PA NL-SIM).¹⁵² Patterned activation of the FP markers is followed by patterned excitation and readout of the emission. More specifically, a set of raw wide field images is recorded by shifting and rotating the activation/illumination pattern. The super-resolution image is reconstructed from the raw images based on the known illumination pattern. Different from SMLM, which favors photoactivatable FPs emitting all their photons in a single burst and featuring a high on/off contrast ratio for localization, PA NL-SIM can tolerate photoswitchable FP markers with lower contrast ratio. It demands, however, that its photon budget, *i.e.*, all photons emitted prior to photobleaching, can be expended over up to hundreds of on-off cycles without a significant decay in photon emission per cycle and, for live imaging, without adding any toxic anti-bleaching chemicals.^{153,154} Zhang *et al.*¹⁵⁵ engineered an FP starting from mEos3.1 with optimal properties for PA NL-SIM, which they denoted Skylan-NS. Using PA NL-SIM with total internal reflection microscopy (TIRF) excitation, Betzig and coworkers¹⁵² demonstrated the excellent performance of Skylan-NS. They imaged caveolae, flask-shaped invaginations of the plasma membrane with a diameter of 50–100 nm (Fig. 12), formed by oligomerization of the caveolin protein, using Skylan-NS fused to caveolin.

Super-resolution optical fluctuation imaging (SOFI)

Unlike SMLM, which uses the emission intensity to localize many individual fluorophores for reconstruction of super-resolved images, SOFI relies on temporal fluctuations of the intensity of individual emitters contributing to each pixel of the image.¹⁵⁶ Therefore, SOFI requires fluorophores with flickering emission intensity. To produce a super-resolved SOFI image, a time series of tens to hundreds of images is acquired, and the intensity fluctuations of each individual pixel (of sub-resolution size) are analyzed by calculating *n*th-order cumulants, which are functions related to *n*th-order correlation functions.¹⁵⁶ An image generated from the *n*th-order cumulant yields an *n*-fold enhanced resolution over the regular (intensity) image.¹⁵⁷ The super-resolved image is background-free and the pixel amplitudes represent the number of fluorescent labels if they exhibit the same emission properties, including the intensity levels of the dark (off) and bright (on) states and the photo-switching kinetics.

Photoswitchable FPs have been successfully employed for SOFI, exploiting their ability to repeatedly switch between a bright on-state and a dark off-state.¹⁵⁸ Zhang *et al.*¹⁵⁹ developed Skylan-S from mEos2 and reported beneficial properties especially for SOFI, including a high intensity in the on-state and an enhanced contrast ratio and photobleaching stability. To demonstrate that Skylan-S is an excellent probe for SOFI, they imaged clathrin-coated pits (CCPs) in living U2OS cells (Fig. 13), using a fusion protein of clathrin and Skylan-S. CCPs are cell membrane invaginations with diameters of 100–200 nm mediating endocytosis. They grow over the course of several ten seconds, and finally bud off to form intracellular vesicles.¹⁶⁰



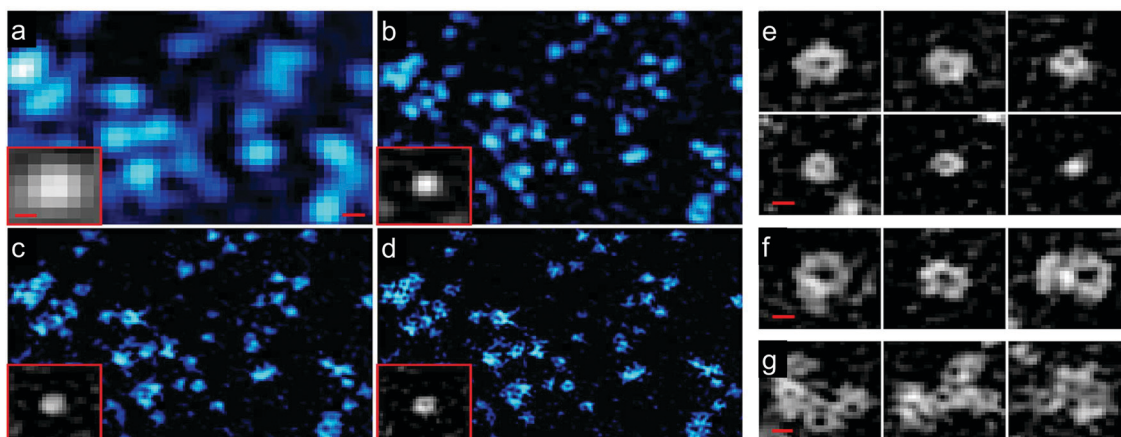


Fig. 12 Images of caveolae on the plasma membrane of a live COS-7 cell expressing Skylan-NS-caveolin at 23 °C. TIRF images (a) with deconvolution and combined with (b) SIM, (c) PA NL-SIM, and (d) saturated PA NL-SIM (45-nm resolution) are shown. Insets in (a–d) show individual caveolae. (e) Diversity of caveolae ring diameters as visualized by PA NL-SIM. (f) Larger rings may represent surface-docked vesicles. (g) Clusters of caveolae reminiscent of clathrin plaques. Scale bars, 100 nm. Adapted from ref. 152 with permission from American Association for the Advancement of Science, copyright 2015.

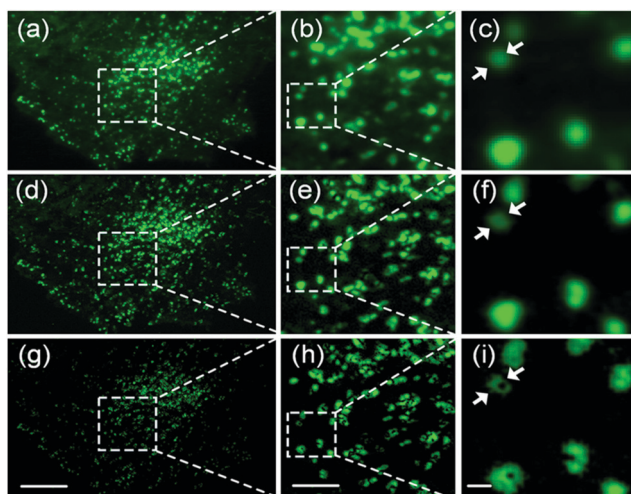


Fig. 13 Widefield and SOFI images of CCPs in live U2OS cells, using clathrin fused with Skylan-S for labeling. (a–c) TIRFM images. (d–f) SOFI images from second-order cumulants. (g–i) SOFI images from third-order cumulants. (b, e and h) Close-up views of the boxed regions in panels a, d, and g, respectively. (c, f and i) Close-up views of the boxed regions in panels b, e, and h, respectively. Scale bars, 10 μ m (a, d and g), 3 μ m (b, e and h), and 500 nm (c, f and i). Adapted from ref. 159 with permission from American Chemical Society, Copyright 2015.

Conclusions and outlook

Optical fluorescence microscopy, especially super-resolution imaging, has been established as one of the most powerful and versatile tools for studying the molecular basis of life. The method crucially relies on our ability to label biomolecules selectively with fluorescent markers, which is an unavoidable perturbation of the system. For live-cell imaging with super-resolution, FPs will be indispensable due to their genetic encodability, which ensures simple labeling procedures. Recent advances in gene editing, notably, CRISPR/Cas9, have made

powerful tools available for targeted gene modification, *e.g.*, to introduce a FP domain, at a specific locus, making the FP labeling approach even more powerful. Gene editing ensures that expression levels are more native-like and artifacts due to transient overexpression can be avoided. However, the smaller numbers of expressed labels (with respect to overexpression *via* transient transfection) make imaging experiments more demanding and call for highly sensitive microscopes and the brightest (photoactivatable) labels. Accordingly, the quest for FPs with enhanced brightness, suitable photoactivation properties, and a large photon budget will continue.

In this review, we have focused on photoactivatable FPs of the EosFP clade and shown that only a few modifications of the natural amino acid sequence resulted in many FP variants with improved and sometimes surprising new properties advantageous for certain imaging techniques. We anticipate that the usual trial-and-error or random approaches for identifying suitable sequence modifications will be increasingly substituted by rational engineering, based on better understanding of the structure–function relationships in FPs, giving guidance for the development of further improved EosFP variants and other GFP-type proteins, *e.g.*, with respect to the intriguing array of light-tunable optical properties. In fact, whereas all EosFP variants included in this review have shown their usefulness in certain applications, they are by no means optimized, easy-to-use devices. For example, apart from regular photoactivation, FPs exhibit intermittency of their fluorescence emission due to transient (and often long-lived) population of non-emissive states. This can be a blessing in some applications (*e.g.*, shelving in dark states can reduce photobleaching effects¹³⁷) but a curse in others (*e.g.*, an already registered FP may be mistaken for a different one upon recovery from a long-lived dark state in quantitative SMLM). Often, carefully adjusted sample illumination with multiple laser wavelengths can help release FPs from these states for best imaging performance.^{51,108,130} In view of the continuous appearance of



new variants even after almost 20 years of EosFP engineering, we are looking forward to further advanced variants, optimized for specific applications.

Notably, there is a large pool of FP sequences in a variety of animals that has not been systematically explored. Screening campaigns may reveal FPs with new and advanced properties that can be exploited for biological imaging. Therefore, we envision that there are still considerable opportunities for advances in FP marker technology. Likewise, we expect progress with other genetically encoded labeling techniques not covered in this review, *e.g.*, chemical tags such as Halo or SNAP for protein labeling¹⁶¹ or light-up aptamers for RNA labeling.^{162–164} These approaches employ synthetic dyes with excellent fluorescence properties, superior to those of FP-based labels, but require an external supply of fluorophores, limiting their versatility and ease of use. In view of the central role of optical fluorescence microscopy in the life sciences, there can be no doubt that the quest for bright, selective and sophisticated optical fluorescence markers for the imaging of biological structures will continue to be a hot research topic for years to come.

Conflicts of interest

There are no conflicts of interest to declare.

Acknowledgements

We gratefully acknowledge many researchers for their collaboration in the development and characterization of FP markers, specifically, EosFP, for more than 20 years. Special thanks are due to Jörg Wiedenmann, who brought us into this exciting research field. He discovered EosFP and many other FPs in anthozoa and optimized them to serve as fluorescence markers. In the early years, Franz Oswald's molecular and cellular biology expertise was essential for testing our FPs in cells and model organisms. We also thank Dominique Bourgeois and Periklis (Laki) Pantazis and their groups for working with us on the characterization of dual-mode photoactivation of IrisFP and the mechanistic basis of primed conversion in pr-mEosFP and other FPs, respectively. The Nienhaus lab was funded by the Helmholtz Association, program Materials Systems Engineering (MSE), the Karlsruhe School of Optics and Photonics (KSOP) and the Deutsche Forschungsgemeinschaft (SFB 1324 (project Z02) and GRK 2039).

References

- 1 *Fluorescence Microscopy: From Principles to Biological Applications*, ed. U. Kubitscheck, Wiley-VCH GmbH, Weinheim, Germany, 2017.
- 2 J. C. Stockert and A. Blazquez-Castro, *Fluorescence Microscopy in Life Sciences*, ed. U. A. E. Sharjah, Bentham Science Publishers, 2017.
- 3 *Far-Field Optical Nanoscopy*, ed. P. Tinnefeld, C. Eggeling and S. W. Hell, Springer Berlin Heidelberg, 2015.
- 4 S. W. Hell, *Science*, 2007, **316**, 1153–1158.
- 5 E. Betzig, G. H. Patterson, R. Sougrat, O. W. Lindwasser, S. Olenych, J. S. Bonifacino, M. W. Davidson, J. Lippincott-Schwartz and H. F. Hess, *Science*, 2006, **313**, 1642–1645.
- 6 S. T. Hess, T. P. Girirajan and M. D. Mason, *Biophys. J.*, 2006, **91**, 4258–4272.
- 7 M. J. Rust, M. Bates and X. Zhuang, *Nat. Methods*, 2006, **3**, 793–795.
- 8 L. Schermelleh, R. Heintzmann and H. Leonhardt, *J. Cell Biol.*, 2010, **190**, 165–175.
- 9 K. Nienhaus and G. U. Nienhaus, *J. Mol. Biol.*, 2016, **428**, 308–322.
- 10 B. N. Giepmans, S. R. Adams, M. H. Ellisman and R. Y. Tsien, *Science*, 2006, **312**, 217–224.
- 11 K. M. Dean and A. E. Palmer, *Nat. Chem. Biol.*, 2014, **10**, 512–523.
- 12 R. P. Haugland, *The Handbook—A Guide to Fluorescent Probes and Labeling Technologies*, ed. O. R. Eugene, Molecular Probes, 11th edn, 2005.
- 13 K. Nienhaus and G. U. Nienhaus, in *Fluorescence Microscopy: From Principles to Biological Applications*, ed. U. Kubitscheck, Wiley-VCH GmbH, 2017, pp. 143–174.
- 14 J. Lippincott-Schwartz and G. H. Patterson, *Science*, 2003, **300**, 87–91.
- 15 E. A. Rodriguez, R. E. Campbell, J. Y. Lin, M. Z. Lin, A. Miyawaki, A. E. Palmer, X. Shu, J. Zhang and R. Y. Tsien, *Trends Biochem. Sci.*, 2017, **42**, 111–129.
- 16 R. N. Day and M. W. Davidson, *Chem. Soc. Rev.*, 2009, **38**, 2887–2921.
- 17 G. U. Nienhaus, *Angew. Chem., Int. Ed.*, 2008, **47**, 8992–8994.
- 18 M. Jinek, K. Chylinski, I. Fonfara, M. Hauer, J. A. Doudna and E. Charpentier, *Science*, 2012, **337**, 816–821.
- 19 O. Shimomura, F. H. Johnson and Y. Saiga, *J. Cell. Physiol.*, 1962, **59**, 223–239.
- 20 D. C. Prasher, V. K. Eckenrode, W. W. Ward, F. G. Prendergast and M. J. Cormier, *Gene*, 1992, **111**, 229–233.
- 21 M. Chalfie, Y. Tu, G. Euskirchen, W. W. Ward and D. C. Prasher, *Science*, 1994, **263**, 802–805.
- 22 K. Nienhaus, G. U. Nienhaus, J. Wiedenmann and H. Nar, *Proc. Natl. Acad. Sci. U. S. A.*, 2005, **102**, 9156–9159.
- 23 M. Ormö, A. B. Cubitt, K. Kallio, L. A. Gross, R. Y. Tsien and S. J. Remington, *Science*, 1996, **273**, 1392–1395.
- 24 F. Yang, L. G. Moss and G. N. Phillips, Jr., *Nat. Biotechnol.*, 1996, **14**, 1246–1251.
- 25 R. Y. Tsien, *Annu. Rev. Biochem.*, 1998, **67**, 509–544.
- 26 M. V. Matz, A. F. Fradkov, Y. A. Labas, A. P. Savitsky, A. G. Zaraisky, M. L. Markelov and S. A. Lukyanov, *Nat. Biotechnol.*, 1999, **17**, 969–973.
- 27 J. Wiedenmann, C. Elke, K. D. Spindler and W. Funke, *Proc. Natl. Acad. Sci. U. S. A.*, 2000, **97**, 14091–14096.
- 28 A. Miyawaki, *Cell Struct. Funct.*, 2002, **27**, 343–347.
- 29 G. S. Baird, D. A. Zacharias and R. Y. Tsien, *Proc. Natl. Acad. Sci. U. S. A.*, 2000, **97**, 11984–11989.
- 30 N. C. Shaner, R. E. Campbell, P. A. Steinbach, B. N. Giepmans, A. E. Palmer and R. Y. Tsien, *Nat. Biotechnol.*, 2004, **22**, 1567–1572.



- 31 F. Oswald, F. Schmitt, A. Leutenegger, S. Ivanchenko, C. D'Angelo, A. Salih, S. Maslakova, M. Bulina, R. Schirmbeck, G. U. Nienhaus, M. V. Matz and J. Wiedenmann, *FEBS J.*, 2007, **274**, 1102–1109.
- 32 J. Wiedenmann, S. Ivanchenko, F. Oswald and G. U. Nienhaus, *Mar. Biotechnol.*, 2004, **6**, 270–277.
- 33 V. V. Verkhusha and K. A. Lukyanov, *Nat. Biotechnol.*, 2004, **22**, 289–296.
- 34 Y. Ishitsuka, K. Nienhaus and G. U. Nienhaus, *Methods Mol. Biol.*, 2014, **1148**, 239–260.
- 35 J. Lippincott-Schwartz and G. H. Patterson, *Trends Cell Biol.*, 2009, **19**, 555–565.
- 36 K. A. Lukyanov, D. M. Chudakov, S. Lukyanov and V. V. Verkhusha, *Nat. Rev. Mol. Cell Biol.*, 2005, **6**, 885–891.
- 37 K. D. Piatkevich and V. V. Verkhusha, *Curr. Opin. Chem. Biol.*, 2010, **14**, 23–29.
- 38 K. Nienhaus and G. U. Nienhaus, *Chem. Soc. Rev.*, 2014, **43**, 1088–1106.
- 39 D. M. Shcherbakova, P. Sengupta, J. Lippincott-Schwartz and V. V. Verkhusha, *Annu. Rev. Biophys.*, 2014, **43**, 303–329.
- 40 A. Acharya, A. M. Bogdanov, B. L. Grigorenko, K. B. Bravaya, A. V. Nemukhin, K. A. Lukyanov and A. I. Krylov, *Chem. Rev.*, 2017, **117**, 758–795.
- 41 D. Bourgeois and V. Adam, *IUBMB Life*, 2012, **64**, 482–491.
- 42 G. U. Nienhaus, K. Nienhaus and J. Wiedenmann, in *Fluorescent Proteins I: From Understanding to Design*, ed. G. Jung, Springer, 2012, vol. 11, pp. 241–263.
- 43 D. Shcherbo, E. M. Merzlyak, T. V. Chepurnykh, A. F. Fradkov, G. V. Ermakova, E. A. Solovieva, K. A. Lukyanov, E. A. Bogdanova, A. G. Zaisky, S. Lukyanov and D. M. Chudakov, *Nat. Methods*, 2007, **4**, 741–746.
- 44 M. Z. Lin, M. R. McKeown, H. L. Ng, T. A. Aguilera, N. C. Shaner, R. E. Campbell, S. R. Adams, L. A. Gross, W. Ma, T. Alber and R. Y. Tsien, *Chem. Biol.*, 2009, **16**, 1169–1179.
- 45 J. Wiedenmann, F. Oswald and G. U. Nienhaus, *IUBMB Life*, 2009, **61**, 1029–1042.
- 46 D. A. Zacharias, J. D. Violin, A. C. Newton and R. Y. Tsien, *Science*, 2002, **296**, 913–916.
- 47 S. Kredel, F. Oswald, K. Nienhaus, K. Deuschle, C. Röcker, M. Wolff, R. Heilker, G. U. Nienhaus and J. Wiedenmann, *PLoS One*, 2009, **4**, e4391.
- 48 R. E. Campbell, O. Tour, A. E. Palmer, P. A. Steinbach, G. S. Baird, D. A. Zacharias and R. Y. Tsien, *Proc. Natl. Acad. Sci. U. S. A.*, 2002, **99**, 7877–7882.
- 49 J. Wiedenmann, B. Vallone, F. Renzi, K. Nienhaus, S. Ivanchenko, C. Röcker and G. U. Nienhaus, *J. Biomed. Opt.*, 2005, **10**, 14003.
- 50 E. Balleza, J. M. Kim and P. Cluzel, *Nat. Methods*, 2018, **15**, 47–51.
- 51 J. Fuchs, S. Böhme, F. Oswald, P. N. Hedde, M. Krause, J. Wiedenmann and G. U. Nienhaus, *Nat. Methods*, 2010, **7**, 627–630.
- 52 S. Kredel, K. Nienhaus, M. Wolff, F. Oswald, S. Ivanchenko, F. Cymer, A. Jeromin, F. J. Michel, K.-D. Spindler, R. Heilker, G. U. Nienhaus and J. Wiedenmann, *Chem. Biol.*, 2008, **15**, 224–233.
- 53 T. D. Craggs, *Chem. Soc. Rev.*, 2009, **38**, 2865–2875.
- 54 J. W. Park and Y. M. Rhee, *J. Am. Chem. Soc.*, 2016, **138**, 13619–13629.
- 55 S. R. Meech, *Chem. Soc. Rev.*, 2009, **38**, 2922–2934.
- 56 R. Ando, H. Hama, M. Yamamoto-Hino, H. Mizuno and A. Miyawaki, *Proc. Natl. Acad. Sci. U. S. A.*, 2002, **99**, 12651–12656.
- 57 J. Wiedenmann, S. Ivanchenko, F. Oswald, F. Schmitt, C. Röcker, A. Salih, K. D. Spindler and G. U. Nienhaus, *Proc. Natl. Acad. Sci. U. S. A.*, 2004, **101**, 15905–15910.
- 58 J. Wiedenmann, S. Gayda, V. Adam, F. Oswald, K. Nienhaus, D. Bourgeois and G. U. Nienhaus, *J. Biophoton.*, 2011, **4**, 377–390.
- 59 S. A. McKinney, C. S. Murphy, K. L. Hazelwood, M. W. Davidson and L. L. Looger, *Nat. Methods*, 2009, **6**, 131–133.
- 60 M. Zhang, H. Chang, Y. Zhang, J. Yu, L. Wu, W. Ji, J. Chen, B. Liu, J. Lu, Y. Liu, J. Zhang, P. Xu and T. Xu, *Nat. Methods*, 2012, **9**, 727–729.
- 61 J. Mathur, R. Radhamony, A. M. Sinclair, A. Donoso, N. Dunn, E. Roach, D. Radford, P. S. Mohaghegh, D. C. Logan, K. Kokolic and N. Mathur, *Plant Physiol.*, 2010, **154**, 1573–1587.
- 62 N. G. Gurskaya, V. V. Verkhusha, A. S. Shcheglov, D. B. Staroverov, T. V. Chepurnykh, A. F. Fradkov, S. Lukyanov and K. A. Lukyanov, *Nat. Biotechnol.*, 2006, **24**, 461–465.
- 63 V. Adam, K. Nienhaus, D. Bourgeois and G. U. Nienhaus, *Biochemistry*, 2009, **48**, 4905–4915.
- 64 V. Adam, B. Moeyaert, C. C. David, H. Mizuno, M. Lelimosin, P. Dedecker, R. Ando, A. Miyawaki, J. Michiels, Y. Engelborghs and J. Hofkens, *Chem. Biol.*, 2011, **18**, 1241–1251.
- 65 H. Tsutsui, S. Karasawa, H. Shimizu, N. Nukina and A. Miyawaki, *EMBO Rep.*, 2005, **6**, 233–238.
- 66 S. Habuchi, H. Tsutsui, A. B. Kochaniak, A. Miyawaki and A. M. van Oijen, *PLoS One*, 2008, **3**, e3944.
- 67 H. Hoi, N. C. Shaner, M. W. Davidson, C. W. Cairo, J. Wang and R. E. Campbell, *J. Mol. Biol.*, 2010, **401**, 776–791.
- 68 A. L. McEvoy, H. Hoi, M. Bates, E. Platonova, P. J. Cranfill, M. A. Baird, M. W. Davidson, H. Ewers, J. Liphardt and R. E. Campbell, *PLoS One*, 2012, **7**, e51314.
- 69 B. Moeyaert, N. Nguyen Bich, E. De Zitter, S. Rocha, K. Clays, H. Mizuno, L. van Meervelt, J. Hofkens and P. Dedecker, *ACS Nano*, 2014, **8**, 1664–1673.
- 70 G. Lapshin, A. Salih, P. Kolosov, M. Golovkina, Y. Zavorotnyi, T. Ivashina, L. Vinokurov, V. Bagratashvili and A. Savitsky, *J. Innovative Opt. Health Sci.*, 2015, **8**, 1550028.
- 71 I. D. Solovyev, A. V. Gavshina, A. S. Katti, A. I. Chizhik, L. M. Vinokurov, G. D. Lapshin, T. V. Ivashina, M. G. Khrenova, I. I. Kireev, I. Gregor, J. Enderlein and A. P. Savitsky, *Sci. Rep.*, 2018, **8**, 15542.
- 72 Y. A. Labas, N. G. Gurskaya, Y. G. Yanushevich, A. F. Fradkov, K. A. Lukyanov, S. A. Lukyanov and



- M. V. Matz, *Proc. Natl. Acad. Sci. U. S. A.*, 2002, **99**, 4256–4261.
- 73 H. Kim, T. J. Grunkemeyer, C. Modi, L. Chen, R. Fromme, M. V. Matz and R. M. Wachter, *Biochemistry*, 2013, **52**, 8048–8059.
- 74 G. U. Nienhaus, K. Nienhaus, A. Hölzle, S. Ivanchenko, F. Renzi, F. Oswald, M. Wolff, F. Schmitt, C. Röcker, B. Vallone, W. Weidemann, R. Heilker, H. Nar and J. Wiedenmann, *Photochem. Photobiol.*, 2006, **82**, 351–358.
- 75 K. L. Litvinenko, N. M. Webber and S. R. Meech, *J. Phys. Chem. A*, 2003, **107**, 2616–2623.
- 76 L. Zhou, T. Obhof, K. Schneider, M. Feldbrugge, G. U. Nienhaus and J. Kamper, *Sci. Rep.*, 2018, **8**, 3611.
- 77 H. Shroff, C. G. Galbraith, J. A. Galbraith and E. Betzig, *Nat. Methods*, 2008, **5**, 417–423.
- 78 S. Manley, J. M. Gillette, G. H. Patterson, H. Shroff, H. F. Hess, E. Betzig and J. Lippincott-Schwartz, *Nat. Methods*, 2008, **5**, 155–157.
- 79 A. Miyawaki, *Nat. Rev. Mol. Cell Biol.*, 2011, **12**, 656–668.
- 80 V. Adam, M. Lelimosin, S. Boehme, G. Desfonds, K. Nienhaus, M. J. Field, J. Wiedenmann, S. McSweeney, G. U. Nienhaus and D. Bourgeois, *Proc. Natl. Acad. Sci. U. S. A.*, 2008, **105**, 18343–18348.
- 81 M. A. Mohr, A. Y. Kobitski, L. R. Sabater, K. Nienhaus, C. J. Obara, J. Lippincott-Schwartz, G. U. Nienhaus and P. Pantazis, *Angew. Chem., Int. Ed.*, 2017, **56**, 11628–11633.
- 82 S. Gayda, K. Nienhaus and G. U. Nienhaus, *Biophys. J.*, 2012, **103**, 2521–2531.
- 83 M. G. Paez-Segala, M. G. Sun, G. Shtengel, S. Viswanathan, M. A. Baird, J. J. Macklin, R. Patel, J. R. Allen, E. S. Howe, G. Piszczek, H. F. Hess, M. W. Davidson, Y. Wang and L. L. Looger, *Nat. Methods*, 2015, **12**, 215–218.
- 84 Z. Fu, D. Peng, M. Zhang, F. Xue, R. Zhang, W. He, T. Xu and P. Xu, *Nat. Methods*, 2020, **17**, 55–58.
- 85 H. Chang, M. Zhang, W. Ji, J. Chen, Y. Zhang, B. Liu, J. Lu, J. Zhang, P. Xu and T. Xu, *Proc. Natl. Acad. Sci. U. S. A.*, 2012, **109**, 4455–4460.
- 86 M. A. Elsliger, R. M. Wachter, G. T. Hanson, K. Kallio and S. J. Remington, *Biochemistry*, 1999, **38**, 5296–5301.
- 87 M. Chatteraj, B. A. King, G. U. Bublitz and S. G. Boxer, *Proc. Natl. Acad. Sci. U. S. A.*, 1996, **93**, 8362–8367.
- 88 K. Nienhaus, F. Renzi, B. Vallone, J. Wiedenmann and G. U. Nienhaus, *Biochemistry*, 2006, **45**, 12942–12953.
- 89 K. Nienhaus, F. Renzi, B. Vallone, J. Wiedenmann and G. U. Nienhaus, *Biophys. J.*, 2006, **91**, 4210–4220.
- 90 D. M. Chudakov, M. V. Matz, S. Lukyanov and K. A. Lukyanov, *Physiol. Rev.*, 2010, **90**, 1103–1163.
- 91 W. W. Ward, H. J. Prentice, A. F. Roth, C. W. Cody and S. C. Reeves, *Photochem. Photobiol.*, 1982, **35**, 803–808.
- 92 C. Scharnagl, R. Raupp-Kossmann and S. F. Fischer, *Biophys. J.*, 1999, **77**, 1839–1857.
- 93 R. Bizzarri, R. Nifosi, S. Abbruzzetti, W. Rocchia, S. Guidi, D. Arosio, G. Garau, B. Campanini, E. Grandi, F. Ricci, C. Viappiani and F. Beltram, *Biochemistry*, 2007, **46**, 5494–5504.
- 94 C. N. Pace, F. Vajdos, L. Fee, G. Grimsley and T. Gray, *Protein Sci.*, 1995, **4**, 2411–2423.
- 95 W. W. Ward, *Methods Biochem. Anal.*, 2006, **47**, 39–65.
- 96 X. He, A. F. Bell and P. J. Tonge, *FEBS Lett.*, 2003, **549**, 35–38.
- 97 W. Weber, V. Helms, J. A. McCammon and P. W. Langhoff, *Proc. Natl. Acad. Sci. U. S. A.*, 1999, **96**, 6177–6182.
- 98 A. A. Voityuk, M. E. Michel-Beyerle and N. Rösch, *Chem. Phys.*, 1998, **231**, 13–25.
- 99 A. D. Kummer, C. Kompa, H. Niwa, T. Hirano, S. Kojima and M. E. Michel-Beyerle, *J. Phys. Chem. B*, 2002, **106**, 7554–7559.
- 100 J. Wiedenmann, A. Schenk, C. Röcker, A. Girod, K. D. Spindler and G. U. Nienhaus, *Proc. Natl. Acad. Sci. U. S. A.*, 2002, **99**, 11646–11651.
- 101 K. Nienhaus, H. Nar, R. Heilker, J. Wiedenmann and G. U. Nienhaus, *J. Am. Chem. Soc.*, 2008, **130**, 12578–12579.
- 102 F. V. Subach, G. H. Patterson, S. Manley, J. M. Gillette, J. Lippincott-Schwartz and V. V. Verkhusha, *Nat. Methods*, 2009, **6**, 153–159.
- 103 D. C. Loos, S. Habuchi, C. Flors, J. Hotta, J. Wiedenmann, G. U. Nienhaus and J. Hofkens, *J. Am. Chem. Soc.*, 2006, **128**, 6270–6271.
- 104 H. Shinoda, K. Lu, R. Nakashima, T. Wazawa, K. Noguchi, T. Matsuda and T. Nagai, *Cell Chem. Biol.*, 2019, **26**, 1469–1479.
- 105 H. Mizuno, T. K. Mal, K. I. Tong, R. Ando, T. Furuta, M. Ikura and A. Miyawaki, *Mol. Cell*, 2003, **12**, 1051–1058.
- 106 I. Hayashi, H. Mizuno, K. I. Tong, T. Furuta, F. Tanaka, M. Yoshimura, A. Miyawaki and M. Ikura, *J. Mol. Biol.*, 2007, **372**, 918–926.
- 107 H. Tsutsui, H. Shimizu, H. Mizuno, N. Nukina, T. Furuta and A. Miyawaki, *Chem. Biol.*, 2009, **16**, 1140–1147.
- 108 D. Thedie, R. Berardozi, V. Adam and D. Bourgeois, *J. Phys. Chem. Lett.*, 2017, **8**, 4424–4430.
- 109 N. S. Makarov, C. Cirloganu, J. W. Perry, K. A. Lukyanov and K. M. Solntsev, *J. Photochem. Photobiol., A*, 2014, **280**, 5–13.
- 110 N. V. Klementieva, K. A. Lukyanov, N. M. Markina, S. A. Lukyanov, E. V. Zagaynova and A. S. Mishin, *Chem. Commun.*, 2016, **52**, 13144–13146.
- 111 B. Turkowyd, A. Balinovic, D. Virant, H. G. G. Carnero, F. Caldana, M. Endesfelder, D. Bourgeois and U. Endesfelder, *Angew. Chem., Int. Ed.*, 2017, **56**, 11634–11639.
- 112 K. Nienhaus and G. U. Nienhaus, *J. Phys.: Condens. Matter*, 2016, **28**, 443001.
- 113 M. Lelimosin, V. Adam, G. U. Nienhaus, D. Bourgeois and M. J. Field, *J. Am. Chem. Soc.*, 2009, **131**, 16814–16823.
- 114 X. Li, L. W. Chung, H. Mizuno, A. Miyawaki and K. Morokuma, *J. Phys. Chem. B*, 2010, **114**, 16666–16675.
- 115 E. Fron, M. Van der Auweraer, B. Moeyaert, J. Michiels, H. Mizuno, J. Hofkens and V. Adam, *J. Phys. Chem. B*, 2013, **117**, 2300–2313.



- 116 E. Fron, M. Sliwa, V. Adam, J. Michiels, S. Rocha, P. Dedecker, J. Hofkens and H. Mizuno, *Photochem. Photobiol. Sci.*, 2014, **13**, 867–874.
- 117 J. Wiedenmann and G. U. Nienhaus, *Expert Rev. Proteomics*, 2006, **3**, 361–374.
- 118 C. Fare, L. Yuan, V. Cordon-Preciado, J. J. Michels, M. J. Bearpark, P. Rich and J. J. van Thor, *J. Phys. Chem. B*, 2020, **124**, 7765–7778.
- 119 H. Kim, T. Zou, C. Modi, K. Dorner, T. J. Grunkemeyer, L. Chen, R. Fromme, M. V. Matz, S. B. Ozkan and R. M. Wachter, *Structure*, 2015, **23**, 34–43.
- 120 J. A. Ugalde, B. S. Chang and M. V. Matz, *Science*, 2004, **305**, 1433.
- 121 W. P. Dempsey, L. Georgieva, P. M. Helbling, A. Y. Sonay, T. V. Truong, M. Haffner and P. Pantazis, *Nat. Methods*, 2015, **12**, 645–648.
- 122 R. Berardozi, V. Adam, A. Martins and D. Bourgeois, *J. Am. Chem. Soc.*, 2016, **138**, 558–565.
- 123 M. Byrdin, C. Duan, D. Bourgeois and K. Brettel, *J. Am. Chem. Soc.*, 2018, **140**, 2897–2905.
- 124 A. M. Bogdanov, A. S. Mishin, I. V. Yampolsky, V. V. Belousov, D. M. Chudakov, F. V. Subach, V. V. Verkhusha, S. Lukyanov and K. A. Lukyanov, *Nat. Chem. Biol.*, 2009, **5**, 459–461.
- 125 S. Olsen, K. Lamothe and T. J. Martinez, *J. Am. Chem. Soc.*, 2010, **132**, 1192–1193.
- 126 J. P. Colletier, M. Sliwa, F. X. Gallat, M. Sugahara, V. Guillon, G. Schiro, N. Coquelle, J. Woodhouse, L. Roux, G. Gotthard, A. Royant, L. M. Uriarte, C. Ruckebusch, Y. Joti, M. Byrdin, E. Mizohata, E. Nango, T. Tanaka, K. Tono, M. Yabashi, V. Adam, M. Cammarata, I. Schlichting, D. Bourgeois and M. Weik, *J. Phys. Chem. Lett.*, 2016, **7**, 882–887.
- 127 T. D. Krueger, L. Tang, L. Zhu, I. L. Breen, R. M. Wachter and C. Fang, *Angew. Chem., Int. Ed.*, 2020, **59**, 1644–1652.
- 128 E. De Zitter, J. Ridard, D. Thedie, V. Adam, B. Levy, M. Byrdin, G. Gotthard, L. Van Meervelt, P. Dedecker, I. Demachy and D. Bourgeois, *J. Am. Chem. Soc.*, 2020, **142**, 10978–10988.
- 129 M. G. Romei, C. Y. Lin, I. I. Mathews and S. G. Boxer, *Science*, 2020, **367**, 76–79.
- 130 M. Sun, K. Hu, J. Bewersdorf and T. D. Pollard, *Biophys. J.*, 2021, **120**, 21–34.
- 131 E. De Zitter, D. Thedie, V. Monkemoller, S. Hugelier, J. Beaudouin, V. Adam, M. Byrdin, L. Van Meervelt, P. Dedecker and D. Bourgeois, *Nat. Methods*, 2019, **16**, 707–710.
- 132 S. A. Wacker, C. Alvarado, G. von Wichert, U. Knippschild, J. Wiedenmann, K. Clauss, G. U. Nienhaus, H. Hameister, B. Baumann, T. Borggreffe, W. Knöchel and F. Oswald, *EMBO J.*, 2011, **30**, 43–56.
- 133 P. Sengupta, S. B. van Engelenburg and J. Lippincott-Schwartz, *Chem. Rev.*, 2014, **114**, 3189–3202.
- 134 P. N. Hedde and G. U. Nienhaus, *Protoplasma*, 2014, **251**, 349–362.
- 135 A. C. Stiel, M. Andresen, H. Bock, M. Hilbert, J. Schilde, A. Schönle, C. Eggeling, A. Egner, S. W. Hell and S. Jakobs, *Biophys. J.*, 2008, **95**, 2989–2997.
- 136 S. Gayda, P. N. Hedde, K. Nienhaus and G. U. Nienhaus, in *Far-Field Optical Nanoscopy*, ed. P. Tinnefeld, C. Eggeling and S. W. Hell, Springer-Verlag Berlin Heidelberg, 2011.
- 137 K. Nienhaus and G. U. Nienhaus, *ACS Nano*, 2016, **10**, 9104–9108.
- 138 A. Brodehl, P. N. Hedde, M. Dieding, A. Fatima, V. Walhorn, S. Gayda, T. Saric, B. Klauke, J. Gummert, D. Anselmetti, M. Heilemann, G. U. Nienhaus and H. Milting, *J. Biol. Chem.*, 2012, **287**, 16047–16057.
- 139 K. Faire, C. M. Waterman-Storer, D. Gruber, D. Masson, E. D. Salmon and J. C. Bulinski, *J. Cell Sci.*, 1999, **112**, 4243–4255.
- 140 J. Riedl, A. H. Crevenna, K. Kessenbrock, J. H. Yu, D. Neukirchen, M. Bista, F. Bradke, D. Jenne, T. A. Holak, Z. Werb, M. Sixt and R. Wedlich-Söldner, *Nat. Methods*, 2008, **5**, 605–607.
- 141 N. Durisic, L. Laparra-Cuervo, A. Sandoval-Alvarez, J. S. Borbely and M. Lakadamyali, *Nat. Methods*, 2014, **11**, 156–162.
- 142 P. Annibale, S. Vanni, M. Scarselli, U. Rothlisberger and A. Radenovic, *PLoS One*, 2011, **6**, e22678.
- 143 N. Durisic, L. L. Cuervo and M. Lakadamyali, *Curr. Opin. Chem. Biol.*, 2014, **20**, 22–28.
- 144 A. Lee, K. Tsekouras, C. Calderon, C. Bustamante and S. Presse, *Chem. Rev.*, 2017, **117**, 7276–7330.
- 145 G. Hummer, F. Fricke and M. Heilemann, *Mol. Biol. Cell*, 2016, **27**, 3637–3644.
- 146 F. Fricke, J. Beaudouin, R. Eils and M. Heilemann, *Sci. Rep.*, 2015, **5**, 14072.
- 147 C. L. Krüger, M. T. Zeuner, G. S. Cottrell, D. Widera and M. Heilemann, *Sci. Signaling*, 2017, **10**, eaan1308.
- 148 L. Zhou, M. Evangelinos, V. Wernet, A. F. Eckert, Y. Ishitsuka, R. Fischer, G. U. Nienhaus and N. Takeshita, *Sci. Adv.*, 2018, **4**, e1701798.
- 149 M. G. Gustafsson, *J. Microsc.*, 2000, **198**, 82–87.
- 150 M. G. Gustafsson, *Proc. Natl. Acad. Sci. U. S. A.*, 2005, **102**, 13081–13086.
- 151 R. Heintzmann and T. Huser, *Chem. Rev.*, 2017, **117**, 13890–13908.
- 152 D. Li, L. Shao, B. C. Chen, X. Zhang, M. Zhang, B. Moses, D. E. Milkie, J. R. Beach, J. A. Hammer, 3rd, M. Pasham, T. Kirchhausen, M. A. Baird, M. W. Davidson, P. Xu and E. Betzig, *Science*, 2015, **349**, aab3500.
- 153 E. H. Rego, L. Shao, J. J. Macklin, L. Winoto, G. A. Johansson, N. Kamps-Hughes, M. W. Davidson and M. G. Gustafsson, *Proc. Natl. Acad. Sci. U. S. A.*, 2012, **109**, E135–143.
- 154 Y. Wu and H. Shroff, *Nat. Methods*, 2018, **15**, 1011–1019.
- 155 X. Zhang, M. Zhang, D. Li, W. He, J. Peng, E. Betzig and P. Xu, *Proc. Natl. Acad. Sci. U. S. A.*, 2016, **113**, 10364–10369.
- 156 T. Dertinger, R. Colyer, G. Iyer, S. Weiss and J. Enderlein, *Proc. Natl. Acad. Sci. U. S. A.*, 2009, **106**, 22287–22292.



- 157 T. Dertinger, R. Colyer, R. Vogel, J. Enderlein and S. Weiss, *Opt. Express*, 2010, **18**, 18875–18885.
- 158 P. Dedecker, G. C. Mo, T. Dertinger and J. Zhang, *Proc. Natl. Acad. Sci. U. S. A.*, 2012, **109**, 10909–10914.
- 159 X. Zhang, X. Chen, Z. Zeng, M. Zhang, Y. Sun, P. Xi, J. Peng and P. Xu, *ACS Nano*, 2015, **9**, 2659–2667.
- 160 Y. Li, L. Shang and G. U. Nienhaus, *Nanoscale*, 2016, **8**, 7423–7429.
- 161 C. A. Hoelzel and X. Zhang, *ChemBioChem*, 2020, **21**, 1935–1946.
- 162 S. Neubacher and S. Hennig, *Angew. Chem., Int. Ed.*, 2019, **58**, 1266–1279.
- 163 R. Wirth, P. Gao, G. U. Nienhaus, M. Sunbul and A. Jäschke, *J. Am. Chem. Soc.*, 2019, **141**, 7562–7571.
- 164 M. Sunbul, J. Lackner, A. Martin, D. Englert, B. Hacene, K. Nienhaus, G. U. Nienhaus and A. Jäschke, *Nat. Biotechnol.*, 2021, DOI: 10.1038/s41587-020-00794-3.

