




Cite this: *RSC Adv.*, 2019, 9, 14797

Modifying the microstructure of algae-based active carbon and modelling supercapacitors using artificial neural networks†

Jiashuai Wang,^a Zhe Li,^{ac} Shaocun Yan,^{ac} Xue Yu,^a Yanqing Ma ^{*ab} and Lei Ma^{*a}

An improved activated carbon material is synthesized from nostoc flagelliforme algae (NF) using an acid immersing method. The material has more pores and lower internal resistance compared with raw NF. Hydrofluoric acid can effectively decompose cellulose fibers and remove inorganic impurities, giving the carbon materials high mesopore volumes, which makes electrolyte ions rapidly transfer to the active site on the electrode surface. The specific capacitance of the sample was increased from 200 to 283 F g⁻¹ after immersing in hydrofluoric acid. In addition, the symmetric supercapacitor shows an excellent energy density of 22 W h kg⁻¹ at a power density of 80 W kg⁻¹. The capacitance remains at 101.7% after 10 000 cycles. Furthermore, in order to find the relationship between the biochar structure and electrochemical performance in supercapacitors, an artificial neural network (ANN) method is used for studying the complex synergy mechanism. The specific capacitance is modelled using various input factors like aspect ratio (r_{LD}), cellulose ratio (CL(%)), specific surface area (S_{BET}), pore volume (V_{tot}), internal resistance (R_s) and so on. The Levenberg–Marquart back propagation algorithm with sigmoid and ReLu active function is adopted to train the model. Random forest is used to analyse the relative importance of every input factor on specific capacitance. Results show that the model can estimate the energy storage with a mean squared error of 4.39 for materials with specific structure. Importance analyses indicate the first three significant variables are S_{BET} , R_s and V_{por} . The ANN model can accurately predict the electrical properties of biomass-based carbon materials, and also provide guidance for the selection of energy storage materials in the future.

Received 19th February 2019

Accepted 15th April 2019

DOI: 10.1039/c9ra01255a

rsc.li/rsc-advances

1. Introduction

With the development of society fossil energy is becoming increasingly depleted and no longer meets the needs of human beings. Energy storage has attracted a lot of interest.¹ Among the various kinds of energy storage devices, supercapacitors emerge as competitive due to their high power density, short charge/discharge time and good cycle stability.² All these properties can be attributed to the energy storage mechanism through the adsorption and desorption of electrolyte ions on the electrode surface. The electrode material is the most important part for supercapacitors' electrochemical performance. Among the enormous amounts of research, activated carbons have recently attracted immense interest due to their

large surface area, stable chemical properties, high conductivity and adjustable structure.³ It is mainly prepared *via* carbonization and activation of different precursors. Generally speaking, materials containing a high content of carbon and a small amount of inorganics are favorable precursors for the preparation of activated carbon. From the points of availability and low cost of raw materials, waste biomass, such as corncob sponge,⁴ watermelon seeds,⁵ bougainvillea flowers,⁶ fresh elm samaras,⁷ dandelion fluff,⁸ garlic skin,⁹ lotus receptacle,¹⁰ rice husk,¹¹ cornstalk,¹² and kelp,¹³ have been seen as promising precursors for preparing activated carbon.

Algae biomass is known to grow fast in eutrophicated water bodies. Its excessive accumulation does serious damage to the marine ecosystem. It not only promotes bacteria growth but also hinders the tourism development. Therefore, a practical and feasible method to solve this problem is to take advantage of these wastes to produce value-added products. Prof. Du¹⁴ reported that enteromorpha with egg-shell structure is more likely to form porous layered structure during carbonization, resulting high capacitance in supercapacitor. Prof. Yang¹⁵ fabricated porous and high specific surface area carbon-aerogel from seaweed aerogel, and successfully applied to the field of lithium-ion battery and supercapacitors. These results indicate

^aTianjin International Center for Nanoparticles and Nanosystems, Tianjin University, 300072, P. R. China. E-mail: mayanqing@tju.edu.cn

^bState Laboratory of Precision Measuring Technology and Instruments, Tianjin University, 300072, P. R. China

^cSchool of Chemistry and Chemical Engineering, Shihezi University, 832003, P. R. China

† Electronic supplementary information (ESI) available. See DOI: 10.1039/c9ra01255a



that algae can stand out in energy storage application. However, to date, no report has been published about algae being pre-treated with different acid solution before carbonization, which is the method we used in this article to improve the structure of NF-based activated carbon.

Another important task in this paper is using artificial neural network (ANN) to construct relations between complex structure and performance. It is known that each structure factor *i.e.* aspect ratio ($r_{L/D}$), cellulose accounts (CL (%)), specific surface area (S_{BET}), pore volume (V_{tot}), mesopore volume (V_{mes}), micropore volume (V_{mic}), resistance (R_s) and nitrogen content (N (%)) shows nonlinearities or no specific relation to electrochemical performance. Therefore establishing an appropriate structure–performance relationship becomes a big problem. ANN is famous for fast learning process, and it has been employed for Multi-Inputs Single-Output (MISO) problems such as pattern recognition, stock prediction, *etc.*¹⁶ Prof. T. Weigert predicted the state of charge for energy storage devices using ANN.¹⁷ Prof. Ajit Danti used ANN to predict the age and gender of human faces with 95% accuracy.¹⁸ In this paper ANN model is established based on Levenberg–Marquart back propagation algorithm. Tanh and ReLu active functions are act as transfer functions in hidden layers. The relative importance of inputs is assessed by Random Forest.¹⁹ To date, it has attracted much attention in data analysis and other fields. Random Forest contains many decision trees. Each split is a feature condition, which is used to divide the data set (root node) into many homogeneous groups, and further up to the terminal (leaf node). The eventual importance of every feature is calculated by voting from individual decision tree in random forest.²⁰

2. Experimental

2.1 Synthesis of NFAC-x

The NF was collected from eastern coast of Xia Pu sea in Fujian province. Acetylene black, polytetrafluoroethylene (PTFE), potassium hydroxide (KOH), concentrated hydrochloric acid (37 wt%, HCl), hydrogen peroxide (30 wt%, H_2O_2), acetic acid (Ac), hydrofluoric acid (40 wt%, HF) were purchased from Aladdin Chemistry Co. Ltd. (China). Sodium hypochlorite ($NaClO_2$) and ethanol were purchased from Yuanli chemical engineering Inc., Tianjin, China. All the chemical reagents were of analytical grade.

2.1.1 Pretreatment of the raw NF. In this study, the dried raw NF was processed as follows: a certain amount of raw NF was firstly dispersed separately into 5 wt% Ac– H_2O_2 , 5 wt% Ac– $NaClO_2$, 2 M HF aqueous solution and was stirred in the swing bed for 4 h at 20 °C. The as-prepared samples were washed with distilled water for 5 times, then maintained in a freeze drying oven for 24 h. These samples are referred to as NF-a, NF-b, NF-c, respectively. The control sample without any pretreatment is referred to as NF.

2.1.2 Synthesis of the activated carbons. Firstly, a certain amount of NF, NF-a, NF-b, NF-c was carbonized at 400 °C for 1 h under an argon atmosphere in a tube furnace. The resulting material was denoted as NFC-x (x represents a, b, c). 1 g NFC-x was mixed with KOH in a certain proportion ($KOH/NFC-x = 2,$

3, 4) and milled with mortar evenly. Then the samples were put into aluminium oxide ark located in a tube furnace for activation process at 700 °C for 2 h. After the activation process and the temperature was down, the products were dispersed in HCl solution (1.0 mol L^{-1}) to react with potassium compounds. Then the sample was vacuum filtrated by DI water for several times to achieve neutral pH value. Finally the samples were dried at 50 °C for 24 h in an air dry oven. The activated carbon preparing from the NFC, NFC-a, NFC-b, NFC-c is referred as NFAC, NFAC-a, NFAC-b, NFAC-c, respectively. For comparison, NFAC-c was also fabricated at 600, 800 and 900 °C (NFAC-c-600, NFAC-c-800, NFAC-c-900) in activation procedure.

2.2 Material characterization

Weight change during carbonization was monitored by a thermogravimetric analyzer (TGA; DTG-60AH) under N_2 atmosphere from 100 °C to 800 °C. The surface morphology and microstructure of the samples were characterized with scanning electron microscope (SEM; Hitachi SU3500) and transmission electron microscope (TEM, Tecnai F30). Crystalline structure was identified by a D/MAX-2500 X-ray diffractometer (XRD) operating with Cu K α radiation ($\lambda = 1.5418 \text{ \AA}$) at a scan rate (2θ) of 5° min^{-1} . The degree of graphitization was measured by Raman spectroscopy (Horiba Scientific, France) with an excitation wavelength of 532 nm. The pore structure property was characterized by Nitrogen adsorption–desorption method at -196° C (Quantachrome Autosorb-iQ). The samples were degassed at 200 °C for 6 h under vacuum prior to the adsorption/desorption measurements. The specific surface area of the samples was measured by using the multi-point Brunauer–Emmett–Teller (BET) method. The pore size distributions were estimated by using cylinder/slit density functional theory (DFT). The total pore volume (V_{tot}) was determined at a relative pressure $P/P_0 = 0.99$ and the micropore volume (V_{mic}) was determined using the t -plot method.

2.3 Electrochemical performance

Electrochemical properties of prepared samples were measured in a two electrode system using CHI760e electrochemical workstation (Chenhua, Shanghai, China). For electrode preparation, 80 wt% NF-derived active carbon, 10 wt% polytetrafluoroethylene and 10 wt% conducting carbon were mixed in ethanol to form slurry. The slurry was pressed into flakes *via* a stainless bar, and then cut into small round pieces (diameter is 8 mm). The round pieces were oven-dried at 150 °C for 5 h. Current collectors were two pieces of carbon paper with a diameter of 12 mm. Two electrode plates with equal mass of active materials were separated by a filter membrane. All measurements were conducted using 1 M H_2SO_4 . Cyclic voltammetry (CV) and galvanostatic charge–discharge (GCD) measurement were studied within potential window from 0 V to 0.8 V. As for 1 M Na_2SO_4 electrolyte, the maximum potential window can reach 1.6 V. Electrochemical impedance spectroscopy (EIS) was measured in the frequency ranging from 0.01 Hz to 100 kHz with 5 mV amplitude. The specific



capacitance (C) for single electrode and supercapacitor cell (C_{cell}) were calculated from eqn (1) and (2), respectively.²¹

$$C = 4I \times \Delta t / (m \times \Delta V) \quad (1)$$

$$C_{\text{cell}} = I \times \Delta t / (m \times \Delta V) \quad (2)$$

where I (mA) represents discharge current, Δt refers to the discharge time (s), m (mg) is the weight of both working electrodes and ΔV (V) is the potential window during discharge process.

The specific energy density (E , w h kg⁻¹) and the specific power density (P , w kg⁻¹), as practical indicators, were also calculated by eqn (3) and (4), respectively.²²

$$E = C_{\text{cell}} V^2 / (2 \times 3.6) \quad (3)$$

$$P = E / (3600 \times \Delta t) \quad (4)$$

where V is the discharge voltage and Δt (s) is the discharge time.

3. ANN model

ANN is an effective machine learning regression model. It is suitable for big data processing.²³ ANN essentially mimics the nervous system of human beings. The neurons of ANN are grouped into an input layer, one or more hidden layers and an output layer. Fig. 1 depicts the operation mechanism of hidden layer. All variables are firstly weighted and summed (eqn (5)), then activated by a selected nonlinear function.²⁴

$$y = \sum_{i=0}^n W_i X_i + b \quad (5)$$

where X_i represents input, W_i represents the weight for each input and b is a bias. The incredible computational power of ANN is just achieved through interconnected neurons and transfer functions.²⁵

3.1 Feature selection and data normalization

ANN can discover relationships between inputs and outputs of a system without understanding sophisticated function mechanism.²⁶ Here, we apply ANN for analyzing the relationship between the structure of carbon materials and performance of supercapacitors. There are many kinds of structure features affecting the electrochemical performance of supercapacitor. Generally speaking, high specific surface supplies abundant contact surface to absorb electrolyte ions and increase specific capacitance.²⁴ Furthermore, micropore is beneficial to the

formation of double layer capacitors, and mesopore can provide ion transport channel to ensure the high rate capability.²⁷ Heteroatom (e.g. N) may tailor their electron-donor properties and consequently tune the electrical and chemical performance.²⁸ Importantly, from the perspective of biomass itself, aspect ratio ($r_{L/D}$) and cellulose content (CL (%)) are the unique properties of species or organs. For example, straw or root of plant has a large aspect ratio (100–500), while petal or fruit has a relatively small aspect ratio (<10). Shell of Areaceae contains high fractions of cellulose components (>65%),²⁹ straw contains relatively low cellulose ratio (31–44%).³⁰ The purpose of building ANN model is prediction of performance with as many as possible features into consideration, so we also treat them as evaluating performance indicators of supercapacitors.

In order to train a good ANN model, data collection is an important issue. In this manuscript, datasets were collected from more than 200 samples about biomass-derived active carbon and application for supercapacitors in recently published literatures. The input layer includes physical and chemical features of carbon material (S_{BET} , V_{Por} , D_{ave} , V_{mic} , V_{mes} , I_D/I_G , R_s , N (%), CL (%), $r_{L/D}$). The output layer includes only one feature (specific capacitance (C_p)). All of these data is available in XLSX file of ESI.† Considering that the two factors ($r_{L/D}$, CL (%)) are the attributes of biomass itself, and the other eight factors are the structural characteristics of biomass-derived activated carbon. In order to obtain the optimal model, we used two, eight and ten factors as the inputs and compared the accuracy of the prediction results. To eliminate dimension differences and accelerate convergence efficiency, original inputs were normalized in advance according to eqn (6) to assure all features are in the range of [0, 1].³¹

$$X_{\text{nor}} = \frac{X - X_{\text{min}}}{X_{\text{max}} - X_{\text{min}}} \quad (6)$$

where X_{nor} is the variable after normalization. X_{max} and X_{min} are the maximum and the minimum value of a feature.

3.2 Levenberg–Marquart back propagation algorithm in training process

Supercapacitors-based ANN model is simulated by TensorFlow framework in the Python environment. The high prediction capability of ANN model is determined by the structure of network and the optimized algorithm process. Fig. 2 presents the structure of the supercapacitors-based ANN model. It

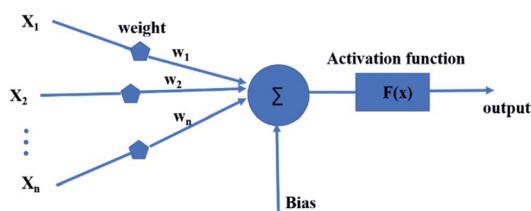


Fig. 1 Artificial neural network model.

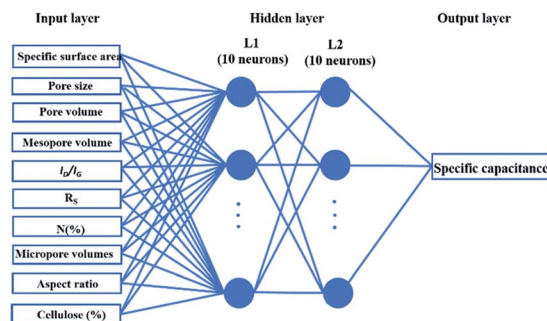


Fig. 2 Artificial neural network model for supercapacitor.



consists of three layers: one input layer including ten neurons, one output layer including one neuron and two hidden layers including 20 neurons. The datasets are divided in two portions randomly by cross-validation technology.³² Ninety percent of overall data is used as training data to update ANN model that learning the structure–property relationships. The trained network was then evaluated by the remaining validation set (ten percent of overall data). The input information is transmitted to every neuron in the hidden layer increased or decreased by adjusting weight, and further transformed to the next hidden or the output layer. In the transmission process, nonlinear activation function plays an important role in future prediction. This paper chooses tanh function for the first hidden layer and ReLu function for the second hidden layer, given by the eqn (7) and (8).³³

$$f(x) = \tanh(x) = \frac{e^x - e^{-x}}{e^x + e^{-x}} \quad (7)$$

$$f(x) = \text{Re Lu}(x) = \begin{cases} x, & x > 0 \\ \gamma x, & x \leq 0 \end{cases} \quad (8)$$

where γ is a variable that can be learned through the Levenberg–Marquart back propagation algorithm. The reason for choosing ReLu function rather than others is its effectiveness in a training process.³⁴

Training a network focuses on applying advanced algorithm to adjust weights (w) and bias (b). The program illustration of Levenberg–Marquart back propagation algorithm is presented in Fig. 3.³⁵ Firstly, ninety percent of experimental data was selected as training subset. It is simple to obtain predicted value using initial parameters (w and b) in the forward-propagation process, meanwhile, mean squared error (MSE) is generated. The eqn (9) represents the MSE calculation:³⁶

$$\text{MSE} = \frac{1}{N} \sum_{i=1}^l (y_i^p - y_i^d)^2 \quad (9)$$

where y_i^p is the i^{th} value predicted from ANN mode y_i^d is the i^{th} desired value. The updating criterion is according to eqn (10):³⁷

$$W_{uv}(n+1) = W_{uv}(n) - \delta \frac{\partial(\text{MSE})}{\partial W_{uv}(t)} \quad (10)$$

where δ is the learning rate and n is epochs. The weight was adjusted by iterating thousands of times that based on Levenberg–Marquart back propagation algorithm.

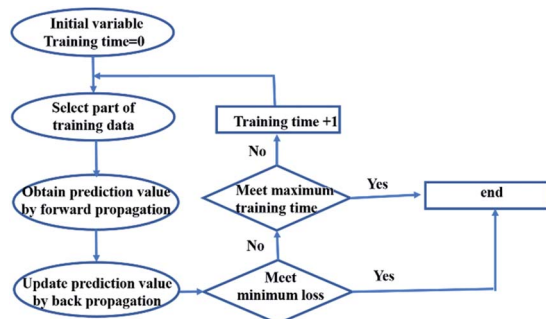


Fig. 3 The program illustration of back propagation algorithm.

3.3 Random forest algorithm in feature importance assessment

Random forest is an integrated learning algorithm which bases on decision tree. Randomization mainly involve two aspects:³⁸ (1) individual decision tree is constituted of training samples, which is selected from data set by bootstrap method randomly. (2) Each split at node is according to one candidate feature condition randomly. In order to find the optimum decision tree, researchers usually based on two indicators: Gini index or out-of-bag data (OOB) error rate.³⁹ Herein, Gini index was used as a criterion for impurity. The detailed algorithm is described as follows:⁴⁰

There are features such as $X_1, X_2, X_3, \dots, X_m$. Gini index is defined by eqn (11):⁴¹

$$GI_m = 1 - \sum_{k=1}^{|k|} P_{mk}^2 \quad (11)$$

where k represents a category. P_{mk} represents the proportion of category k at node m . GI_m shows the probability of randomly selecting two samples from data set whose classes are inconsistent. Therefore, the smaller the GI_m is, the higher the purity will be. The importance score of the feature X_j at the node m ($VIM_{jm}^{(Gini)}$) is the Gini index change after splitting, as shown in eqn (12):⁴²

$$VIM_{jm}^{(Gini)} = GI_m - GI_l - GI_r \quad (12)$$

GI_l and GI_r indicate the Gini index of two new nodes after branching. The node m in one decision tree is belonged to set M , therefore the importance score of feature X_j ($VIM_j^{(Gini)}$) is the sum of $VIM_{jm}^{(Gini)}$, as shown in eqn (13):

$$VIM_j^{(Gini)} = \sum_{m \in M} VIM_{jm}^{(Gini)} \quad (13)$$

If there are n trees in the Random Forest (RF), then the importance score of feature X_j in RF is expressed by eqn (14):

$$VIM_j^{(Gini)} = \sum_{i=1}^n VIM_{ij}^{(Gini)} \quad (14)$$

Finally, the importance score of the feature X_j can be normalized by eqn (15):

$$VIM_j = \frac{VIM_j^{(Gini)}}{\sum_{j=1}^k VIM_j^{(Gini)}} \quad (15)$$

where k represents the sum of features. Random forest algorithm is to estimate the average contribution of each feature on all trees in a random forest. As for capacitance performance being controlled by 10 features in supercapacitors model mentioned above, the program makes bucketing at each node. That is to say, the output values were divided into several interval segments. So the output will fall in a certain interval according to the feature condition. The importance of the feature is ranked along the direction in which the Gini index



decreases fastest at overall node. Fortunately, Sklearn data packet in machine learning already encapsulates the above mentioned complex algorithm, we only need to recall the function and debug parameter. As analyzed above, trees are random, resulting differences in individual trees' predictions. The eventual importance of every feature (VIM_j) is predicted by voting from individual trained decision tree in random forest.

4. Results and discussion

4.1 Structural characterizations

Schematic illustration for preparing NFAC-x is shown in Fig. 4. The porous carbon was fabricated by carbonization and KOH activation of NF at high temperature (600–900 °C) under an Ar atmosphere. As mentioned in previous research,⁴³ NF is rich in lipids, carbohydrates, alginic acid, and multiple trace elements. Polycondensation reactions will take place between these compounds during carbonization and activation process. TGA indicates three weight loss stage (Fig. S1†). The main mass loss takes place from 220 to 400 °C, which reveals the decomposition of carbohydrates, cellulose.⁴⁴ Therefore the carbonization temperature was set at 400 °C to decompose most organics.

Morphology information on the four groups of samples was obtained *via* SEM and TEM. The SEM images of NFC-x and NFAC-x are presented in Fig. 5. It can be seen that NFC-x shows the irregular bulk structure with few visible pores on its surface. However, after activation, NFAC-x was featured with vacancies randomly (Fig. 5e–h and S2†). Such change resulted from the volatile matter (CO_2 , moisture) through decomposition of carbon sample at high temperatures (see ESI† for more explanations). At the same time, the difference of surface

morphology is presented for NF after acid solution immersing. NFAC's surface only distributes blisters, however porous structure is showed on the NFAC-x's surface. More specifically, the SEM image of NFAC-c (Fig. 5h) clearly shows a three-dimensional honeycomb-like porous framework. The interconnected pore walls of NFAC-c look very thin, which can accelerate the rate of ion transmission from the electrolyte solution to the inner pores,⁴⁵ furthermore make outstanding rate performance (74%) when the current density is increased from 0.1 A g^{-1} to 20 A g^{-1} . Chemical composition (C, O) of NFAC-c can be observed from EDS data. Corresponding element mapping images validate the uniform distribution of C atom (Fig. 6b) and O atom (Fig. 6c). O-containing functional groups is helpful for widening working voltage window (0–1.6 V), and increasing energy density of supercapacitors.⁴⁶ NFAC-c shows a large amount of interconnected micropores and mesopores evenly distribute inside carbon material in TEM images. The TEM images of NFAC-c in Fig. 6d–f show that a large amount of interconnected micropores and mesopores are evenly distributed inside carbon material. The abundant micropores and mesoporous structures are more helpful for charge storage and the transmission of electrolytes for the electrode material applied in supercapacitors.⁴⁷ Amorphous structure is also confirmed by carbon materials without graphic ribbon.⁴⁸ From pore size distribution curves, we can observe that mesopores occupy higher proportion of NFAC-c compared to others, which is beneficial for high rate capacitive performance by serving as ion transport channels to the interior surface of electrode materials.⁴⁹

The crystal structure of NFAC-x was evaluated by XRD (Fig. 7a). For all NFAC-x, there are broad and weak diffraction peaks around 22° corresponding to (002) plane of disordered carbon and 43° corresponding to (100) plane of graphitized lattice, respectively.⁵⁰ The barely observed diffraction pattern for NFAC is due to its amorphous property.⁵¹ The feature of disordered structure and graphitization degree in the samples were characterized by Raman spectra (Fig. 7b). The peak (D band) centering at $\sim 1340 \text{ cm}^{-1}$ reveals defect and disorder structure of carbon. Another peak (G band) centering at $\sim 1580 \text{ cm}^{-1}$ is related to sp^2 graphite lattice. A smaller intensity ratio between D and G band (I_D/I_G) indicates the higher degree of graphitization.⁵² NFAC-c has a lower I_D/I_G (0.78) than that of NFAC-

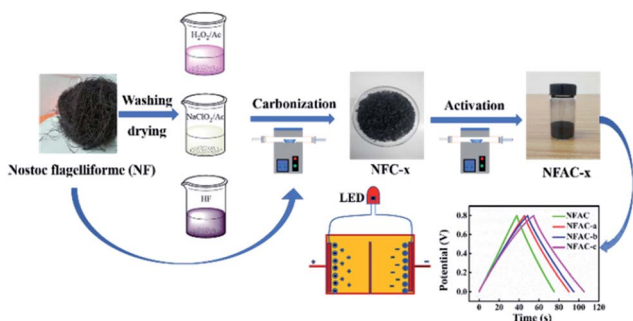


Fig. 4 Schematic illustration of the synthesis process for NFAC-x from algae.

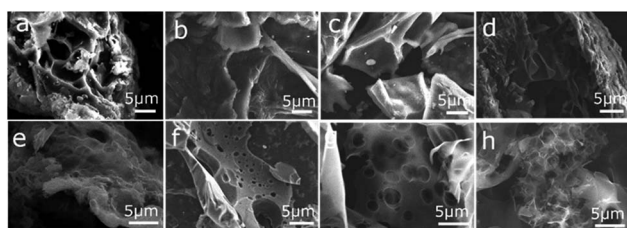


Fig. 5 SEM images after carbonization at 400 °C of NFC (a), NFC-a (b), NFC-b (c), NFC-c (d) and SEM images after activation at 700 °C of NFAC (e), NFAC-a (f), NFAC-b (g), and NFAC-c (h).

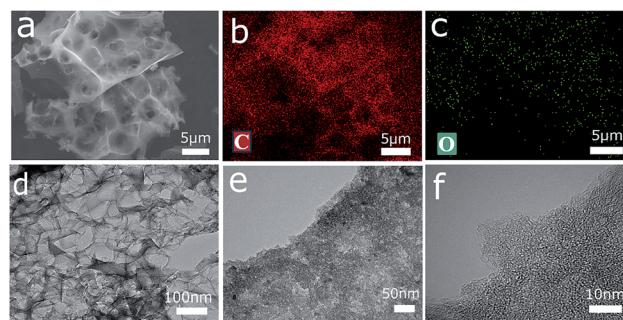


Fig. 6 (a) SEM image of the obtained three-dimensional porous active carbon (NFAC-c). (b) Corresponding elemental mapping images of C atom and O atom in (c). (d) TEM image of NFAC-c. (e) and (f) HRTEM image of NFAC-c.



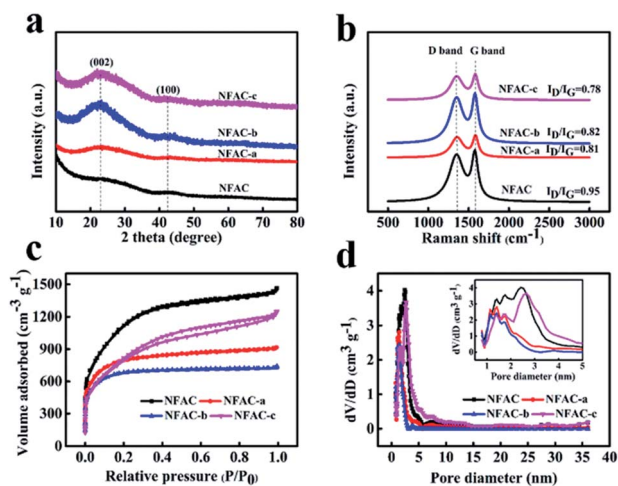


Fig. 7 (a) XRD profiles of NFAC-x. (b) Raman spectra of NFAC-x. (c) N_2 adsorption/desorption isotherm of NFAC-x. (d) Pore size distributions of NFAC-x. The inset shows magnified section of pore diameter ranging from 1 nm to 5 nm.

a (0.81), NFAC-b (0.82) and NFAC (0.95), revealing the greater degree of graphitization.

The pore-size information is measured by N_2 adsorption/desorption analyzer. As depicted in Fig. 7c and d. NFAC, NFAC-a and NFAC-b all display type I adsorption-desorption isotherm based on the IUPAC classification. N_2 adsorption increases steeply at relative low pressure ($P/P_0 < 0.05$), indicating the presence of a great number of micropores.⁵³ For NFAC-c, the plot exhibited hybrid type I/IV adsorption-desorption isotherm with a hysteresis loop in relative pressure P/P_0 from 0.4 to 0.9. The hysteresis loop is ascribed to capillary condensation occurring in mesopores.⁵⁴ The steep adsorption volume in the relative pressure range from 0.9 to 1.0 indicates the existence of macropores.⁵⁵ The above information demonstrates that there are micropores, mesopores, and macropores present in the NFAC-c. More detailed pore size distributions curves (Fig. 7d) calculated according to the DFT method further show the as-prepared carbon materials have a hierarchical pore structure. Table 1 lists the structure characteristics of NFAC, NFAC-a, NFAC-b, and NFAC-c. It is found that their S_{BET} are $3925 \text{ m}^2 \text{ g}^{-1}$ (NFAC), $2884 \text{ m}^2 \text{ g}^{-1}$ (NFAC-a), $2502 \text{ m}^2 \text{ g}^{-1}$ (NFAC-b), $2796 \text{ m}^2 \text{ g}^{-1}$ (NFAC-c), respectively. The V_{por} are $2.26 \text{ cm}^3 \text{ g}^{-1}$ (NFAC), $1.41 \text{ cm}^3 \text{ g}^{-1}$ (NFAC-a), $1.14 \text{ cm}^3 \text{ g}^{-1}$ (NFAC-b), $1.93 \text{ cm}^3 \text{ g}^{-1}$ (NFAC-c), respectively. It can be observed that mesopores occupy higher proportion of NFAC-c compared to others, which is beneficial for high rate capacitive performance by serving as ion transport channels to the interior surface of electrode materials.⁴⁹ Mesopores forming can be attributed to three

reasons: (1) algae (NF) rich in alginate biopolymers on the cell walls. It has a unique ability to generate “egg-box” structures, which facilitate to generate mesopores on algae-based active carbon.⁵⁶ (2) Acid washing of precursor improves the porosity of the activated carbon produced. Compared with other acid solution, HF treatment can remove of the mineral matter or other inorganic impurity involved in the raw algae thoroughly, furthermore alter the pore structure of the material.⁵⁷ (3) KOH activation plays an important role in producing mesopore structure in carbons. When the activation temperature is higher than $400 \text{ }^\circ\text{C}$, the chemical reactions are involved into the process: $6\text{KOH} + 2\text{C} \rightarrow 2\text{K} + 3\text{H}_2 + 2\text{K}_2\text{CO}_3$, subsequent decomposition of K_2CO_3 and reactions of $\text{K}/\text{K}_2\text{CO}_3/\text{CO}_2$ with the carbon.⁵⁸ Due to this unique microstructure, a specific capacitance of 283 F g^{-1} for NFAC-c can be obtained at a current density of 0.1 A g^{-1} , which implies a higher performance than that of NFAC (200 F g^{-1}), NFAC-a (239 F g^{-1}) and NFAC-b (253 F g^{-1}).

4.2 Performance of NFAC-x based electrodes in supercapacitor

To compare electrochemical performance of NFAC-x, CV curves were acquired at a scan rate of 20 mV s^{-1} . All of them present symmetric-rectangular shape without any peaks caused by redox reactions (Fig. 8a, S3b and S5b[†]), showing typical electric double layer capacitance.⁶⁴ Comparing four curves, it can be observed that NFAC-c's CV curve area is larger than that of others. This indicates that NFAC-c is able to store more energy.¹⁰ Fig. 8b shows CV curves for NFAC-c at a scan rate ranging from 2 to 100 mV s^{-1} . Symmetric-rectangular shape maintains well even at high scan rate of 100 mV s^{-1} . GCD curves at a current density of 1 A g^{-1} are shown in Fig. 8c, S3b and S5b.[†] All curves show isosceles triangle shape, implying good reversibility for these electrodes.²¹ Discharge time of NFAC-c is the longest among all samples', furtherly confirming its strong energy storage power.⁶⁵ GCD curves for NFAC-x electrode at different current densities are shown in Fig. 8d, S4b, d and f.[†] Isosceles triangle shape maintains well even at high current densities, showing small internal resistance.⁴⁶ The calculated specific capacitances (C_m) are 200, 239, 253, 283 F g^{-1} for NFAC, NFAC-a, NFAC-b, NFAC-c at a current density of 0.1 A g^{-1} , respectively. Fig. 8e demonstrates C_m of all electrodes at a current density ranging from 0.1 to 20 A g^{-1} . The C_m values of NFAC-c are measured as 283, 276, 264, 255, 242, 225, 210, 190 F g^{-1} at 0.1, 0.2, 0.5, 1, 2, 5, 10, 20 A g^{-1} . Therefore, the NFAC-c has the highest value and still retains a capacitance of 67% at 20 A g^{-1} . Such high capacitance of NFAC-c is related to the unique 3D multi-pores texture, which facilitates ionic transportation

Table 1 Pore characteristic of the as-obtained porous carbon materials

	$S_{BET} [\text{m}^2 \text{ g}^{-1}]$	$S_{mic} [\text{m}^2 \text{ g}^{-1}]$	$S_{mes} [\text{m}^2 \text{ g}^{-1}]$	$V_{por} [\text{cm}^3 \text{ g}^{-1}]$	$V_{mic} [\text{cm}^3 \text{ g}^{-1}]$	$V_{mes} [\text{cm}^3 \text{ g}^{-1}]$	$D_{ave} [\text{nm}]$
NFAC	3925	2554	1371	2.26	1.18	1.08	2.31
NFAC-a	2884	2459	425	1.41	1.05	0.36	1.97
NFAC-b	2502	2305	197	1.14	0.97	0.17	1.83
NFAC-c	2796	1236	1560	1.93	0.58	1.35	2.76



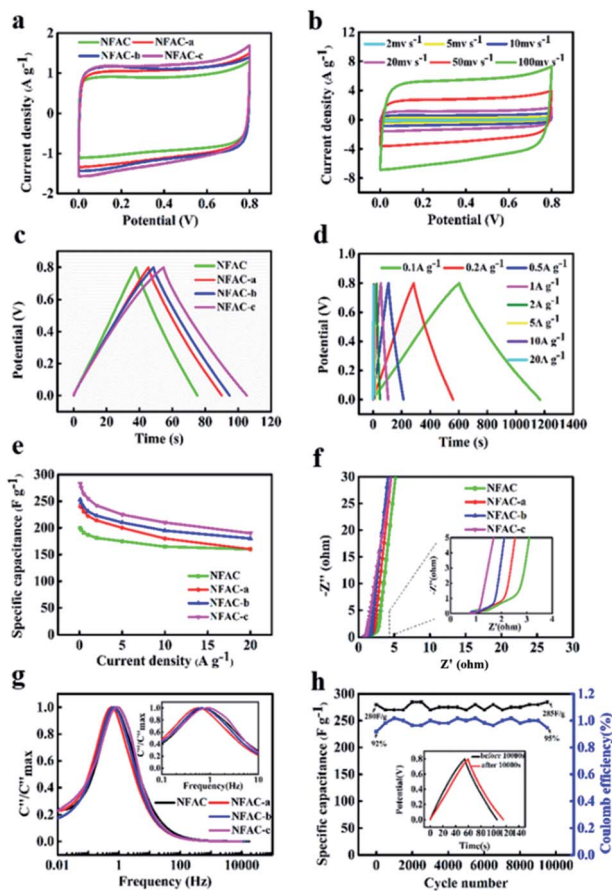


Fig. 8 Electrochemical performance of NFAC-x electrodes: (a) CV curves at a scan rate of 20 mV s^{-1} for NFAC-x. (b) CV curves at different scan rates from 2 to 100 mV s^{-1} for NFAC-c. (c) GCD profiles at a current density of 1 A g^{-1} for NFAC-x. (d) GCD curves at different current densities from 1 to 20 A g^{-1} for NFAC-c. (e) Specific capacitances at varied current densities. (f) Nyquist plots of NFAC-x based electrodes in a frequency from 0.01 Hz to 100 kHz. (g) Frequency response of imaginary capacitance plot of NFAC-x. (h) Cycling stability of the NFAC-c at a current density of 1.0 A g^{-1} for 10 000 cycles. The inset shows the before and after 10 000 cycles of GCD curves.

within mesopores.⁶⁶ The decreasing specific capacitance with current density is mainly resulted from slow diffusion of protons through electrodes.⁶⁷ Fig. S3c and S5c† show the capacitance of other samples being activated at different temperature and KOH mass. It was found NFAC-c exhibited satisfactory capacitive performance. In order to evaluate performance of as-prepared sample, we compared specific capacitance between NFAC-c and other published biomass-derived carbon materials (Table 2). It is shown that our sample is at the level of high energy storage.

EIS has been conducted to get the dynamic information on the interface of electrode and electrolyte (Fig. 8f, S3d and S5d†).⁶⁸ No obvious semicircle was observed at the high-frequency region for NFAC-c, demonstrating a low charge transfer resistance.⁶⁹ Further, intercept at the real axis of impedance (R_s) was fitted by the equivalent circuit, which are in the following order: NFAC (0.85Ω) > NFAC-b (0.91Ω) > NFAC-a (0.74Ω) > NFAC-c (0.73Ω). It shows that NFAC-c has the

best conductivity. The vertical line at low-frequency region is related to superior diffusion channels for electrolyte ions.⁷⁰ The frequency as the function of imaginary capacitance is plotted in Fig. 8g. The imaginary capacitance reaches a peak at the operating frequency f_0 , which is the inverse of the constant time τ_0 .⁷¹ The constant time for NFAC, NFAC-a, NFAC-b, NFAC-c are 1.47 s, 1.78 s, 1.47 s, 1.21 s respectively. This implies that NFAC-c has the rapid frequency response.⁷² The NFAC-c based supercapacitor shows 101.7% capacitance retention after 10 000 GCD cycles at the current density of 1.0 A g^{-1} (Fig. 8h). This result can be ascribed to the further wetting electrode, which facilitate ions to intercalate into and out of the micropores.^{73,74} As shown in the inset of Fig. 8h, the GCD curves still remain symmetric and undistorted after long-term charging/discharging process, suggesting a remarkable stability.

Considering that the high stability window can be attained in neutral solution. It is beneficial to obtain the high energy density for supercapacitors. So we assembled symmetric supercapacitors by employing two same NFAC-c electrodes in 1 M Na_2SO_4 aqueous electrolyte. Fig. 9a shows the CV curves of the NFAC-c/NFAC-c symmetric supercapacitors operated in different voltage windows (1–1.8 V) at 50 mV s^{-1} . It is clear the loop displays a rectangular-like shape without obvious increase of anodic current even at 1.6 V, suggesting an ideal capacitive behavior and excellent reversibility. However, further extending the potential to 1.8 V, the current at high potential increased drastically due to the oxygen and hydrogen evolution reaction, demonstrating that such supercapacitor can be reversibly cycled within the voltage window of 0–1.6 V. The wide working voltage is probably due to that the neutral electrolyte such as Na_2SO_4 aqueous solution (1.0 M) only contains low H^+ and OH^- concentration.⁷⁵ In addition, the 3D interconnected porous structure can also enlarge the voltage window. The hierarchical porosities provide effective pathway for H^+/OH^- transportation, hence preventing di-hydrogen evolution in electrolyte.⁵⁰ Furthermore, the extended voltage window also attributed to the existence of oxygen-containing functional groups introduced by KOH activation process.⁴⁶ Fig. 9b presents the GCD curves of NFAC-c at various current densities. The charge-discharge curves show isosceles triangles shapes, indicating good reversibility. Fig. 9c shows the specific capacitance of NFAC-c at various current densities. When the current density is 1 A g^{-1} , it reaches 191 F g^{-1} . When the current density is 10 A g^{-1} , it retained at 143 F g^{-1} . Fig. 9d is a Ragone diagram. It exhibits an energy density of 22 W h kg^{-1} at a power density of 80 W kg^{-1} , which is higher or comparable with other published results of carbon-based supercapacitors.^{9,61,76–80} Furthermore, the assembled NFAC-c/NFAC-c supercapacitors could successfully light LED bulb with 1.5 V working potential (inset of Fig. 9d). This confirms the feasibility of actual energy storage application.

4.3 Numerical simulation and analysis of ANN model

Structural parameters of carbon materials have a strong effect on capacitance performance, but it has still not come to an agreement as for structure–performance relationship for



Table 2 Comparison of specific capacitance of carbon materials derived from numerous biomass in symmetric supercapacitor

Biomass	Activating agent	S_{BET} ($\text{m}^2 \text{g}^{-1}$)	Specific capacitance (F g^{-1})	Current density (A g^{-1})	Electrolyte	Ref.
Elm samaras	KOH	1947	173	0.25	6 M KOH	7
Celtuce leaves ⁵⁹	KOH	3404	273	0.5	6 M KOH	59
Prolifera green tide	KOH	2200	298	0.1	6 M KOH	15
Clover stem ⁶⁰	KCl	1459	309	0.5	1 M H_2SO_4	60
Pomelo ⁶¹	KOH	832	213.6	1	6 M KOH	61
Cornstalk	KCl/NaCl	1588	413	0.5	1 M H_2SO_4	12
Longan shells ⁶²	KOH	3260	102.1	0.5	6 M KOH	62
Lotus leaf ⁶³	KOH	2488	219	1	6 M KOH	63
Nostoc flagelliforme	KOH	2796	283	0.1	1 M H_2SO_4	Our work

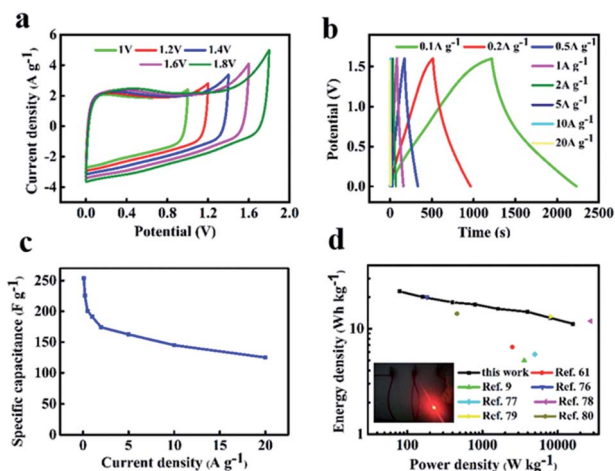


Fig. 9 Electrochemical measurements of the assembled NFAC-c//NFAC-c supercapacitor in 1 M Na_2SO_4 electrolyte: (a) CV curves in various potential window at a scan rate of 50 mV s^{-1} . (b) GCD curves at different current densities. (c) Specific capacitances at different current densities. (d) Ragone plot. The inset is the lightened LED light.

supercapacitors. As depicted in Fig. 10, we recorded experimental data in the literatures. The structural features of our sample (NFAC-x) were specially displayed with black dots in every scatter diagram. There is no simple linear relationship or obvious tendency between them. For example, single specific surface area corresponds to multiple specific capacitances. The same phenomenon exists for N (%), D_{ave} , V_{tot} , etc. It indicates that individual feature is not enough to reveal the complex structure–performance relationship. Regarding to this matter, ANN method was conducted to analyze the data in a feasibility way. The weight matrix between ten input neurons and ten hidden neurons, ten hidden neurons and one output neuron are recorded in Table 3. Weight matrices as for other number of input neurons (2 and 8) are recorded in Tables S1 and S2,[†] respectively. They are barely updated after 1000 epochs when the MSE doesn't decrease anymore. Essentially, weight can be acted as the link between the neurons of hidden layers, which makes indirect relationship between input layer and output layer.

The quantification assessment of ANN is carried out by calculating MSE and correlation coefficient (r^2) between desired output and estimated output provided by ANN model.⁸¹

Fig. 11(a) shows MSE during training process as a function of epochs. The MSE is reduced from 81.90 to 4.39 after 1000 iteration epochs perfectly. Furthermore, there is a sharp convergence (MSE from 81.90 to 12.85) during the first 300 epochs, however a very slow improvement (MSE from 12.82 to 4.39) as epochs increased beyond 300. When the input factors were changed to 2 and 8, MSE can be reduced to 6.38 and 5.50, respectively (Fig. S7a and S8a[†]). The smaller MSE is, the closer the real value to predicted value. These results indicate that the attributes of biomass and the structure of activated carbon

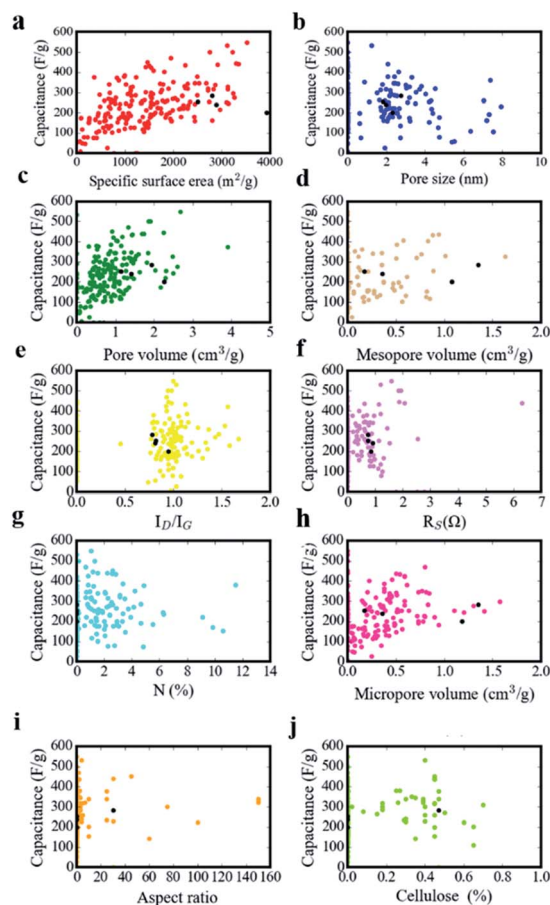


Fig. 10 The relation between specific capacitance and (a) specific surface area, (b) pore size, (c) pore volume, (d) mesopore volume, (e) the intensity ratio of ID/IG, (f) R_s , (g) N-doping amount, (h) micropore volume, (i) aspect ratio, (j) cellulose amount.



Table 3 Diagram of interconnected weights of neurons in input, hidden and output layer^a

	H1	H2	H3	H4	H5	H6	H7	H8	H9	H10
I1	-11.8	-3.0	-38.7	1.49	-18.2	-2.0	-5.9	12.5	-1.8	-43.7
I2	9.7	-1.8	-51.2	-1.1	5.6	-15.1	-5.2	11.3	1.4	-18.5
I3	-76.0	-1.12	9.5	3.5	-36.0	-5.8	-19.8	-4.3	-2.1	-28.1
I4	3.0	-1.5	-1.1	15.9	2.4	15.0	-3.6	9.9	-2.2	-1.9
I5	-9.9	-1.3	0.001	1.4	2.9	-12	-24.9	-0.4	-1.5	-33.2
I6	-12.8	-2.0	-14.6	2.0	-3.3	17.6	-15.7	-4.7	0.5	10.1
I7	23.2	-2.4	-5.9	12.2	18.6	-6.2	7.9	-10.8	-88.6	18.5
I8	23.6	-2.4	-2.2	3.4	3.4	-1.4	7.5	15.0	-1.2	-4.4
I9	36.6	-3.7	-46.8	60.9	29.7	19.5	-40.8	-8.9	-2.7	17.0
I10	40.7	-2.1	15.1	20.4	-26.0	5.1	-2.4	2.5	-3.2	-15.0
O	28.9	-28.5	-31.1	27.9	-33.3	-30.3	-28.5	29.1	-27.1	-31.6

^a H: hidden layer; I1: input layer 1 - $r_{L/D}$; I2: input layer 2 - CL (%); I3: input layer 3 - S_{BET} ; I4: input layer 4 - D_{ave} ; I5: input layer 5 - V_{tot} ; I6: input layer 6 - V_{mic} ; I7: input layer 7 - V_{mes} ; I8: input layer 8 - I_D/I_G ; I9: input layer 9 - R_s ; I10: input layer 10 - N (%); O: output layer.

jointly affect the capacitance. In other words, ANN model can well weigh the relative contributions of these 10 factors to the energy storage property. Correlation coefficient (r^2) is a number between 0 and 1. It can be calculated by eqn (16):⁸²

$$r^2 = 1 - \frac{\sum (y_i^d - y_i^p)^2}{\sum (y_i^d - \bar{y})^2} \quad (16)$$

where y_i^p is the i^{th} value predicted from the ANN model, y_i^d is the i^{th} desired value. \bar{y} denotes the arithmetic mean of the y_i^d . The zero or very low value means that the ANN model does not predict correctly. If the ability of ANN prediction is high, the correlation coefficient increases and reaches to 1 for perfect fitting.⁸³ The correlation coefficient is approximately 0.896 and 0.864 for training data and validation data respectively. They are so closed to 1, which further confirms appropriate ANN modelling for biomass-derived active carbon in supercapacitors. Fig. 11b shows the experimental value compared with predicted value from the test subset (twenty samples) which not appeared in training process. By comparing two

groups of values, it could not only be seen that the overall change tendency of experimental values is consistent to the predicted one, but also error was limited to tolerable range excluding a few outliers. However, when the input factors involve two attributes of biomass itself, only two predicted value can be obtained by ANN model (Fig. S7b†). The sensitivity of the output to the inputs is poor. Similarly, when the input factors contain 8 kinds of structure characteristics from activated carbon, the prediction effect became better than that of the former. Due to the varying of input, the output changes correspondingly. However, there are still some predicted values that are far from the real ones (Fig. S8b†). Therefore, when the input factors contain both the attribute of biomass and the structure information of activated carbon, the prediction of ANN model is the most accurate. The trained model was further used in predicting the electrochemical performance in NFAC-c with multi-input features. From EDS data analysis, it can be obtained that the prepared sample is not incorporated nitrogen into carbon materials. So the value of nitrogen content (N (%)) was initialed by zero. Because ANN has the characteristic of randomness, we run program for 8 times to observe the stability of the prediction value. As shown in Fig. 11c, they were recorded as 313, 319, 274, 281, 258, 287, 255, 315 $F g^{-1}$ respectively. The average value is 289 $F g^{-1}$, which is very closed to the real capacitance value (283 $F g^{-1}$). These figures show ANN model can provide a valuable guidance for predicting energy storage information of active carbon materials with specific structure. The final output is determined by interconnected weights and activation functions. In order to evaluate relative importance for every feature, we used a random forest algorithm. As presented in Fig. 11d, the relative importance to specific capacitance is ranked in the descending order. It can be obtained that first 3 features play an important role in the prediction model. The detailed proportion is listed in Table 4. S_{BET} accounts for 30.1% importance. R_s

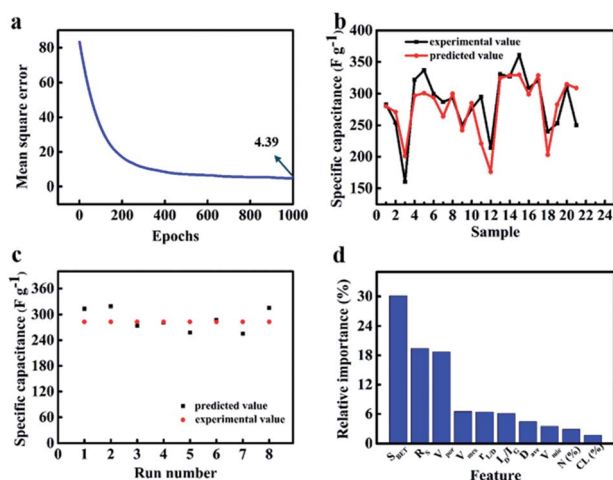


Fig. 11 The prediction effect of ANN model controlled by ten inputs ($r_{L/D}$, CL (%), S_{BET} , D_{ave} , V_{por} , V_{mic} , V_{mes} , I_D/I_G , R_s , N (%)): (a) mean square error as epochs of the ANN model. (b) Comparison of experimental and predicted value of test set for specific capacitance. (c) The specific capacitance of NFAC-c predicted by ANN model for eight times. (d) The relative importance of inputs to output.

Table 4 The relative importance of inputs to output^a

F	S_{BET}	R_s	V_{por}	V_{mes}	$r_{L/D}$	I_D/I_G	D_{ave}	V_{mic}	N (%)	CL (%)
RI (%)	30.1	19.4	18.7	6.5	6.4	6.1	4.4	3.5	2.9	1.7

^a F: feature; RI: relative importance.



accounts for 19.4% importance. V_{tot} accounts for 18.7% importance. It is reasonable for specific surface area to occupy such large importance proportion. Large specific surface area has long been the goal for researchers to realize high specific capacitance, which can enable the electrode material to provide enough contact area to absorb electrolyte ions, thus storing more charge.²⁷ It is known that the electrical conductivity is crucial for obtaining the high rate capability and power density.⁸⁴ At the same time, the materials with high total pore volume show better performance as ion reservoir or transport channels during charging/discharging process, thus improving the rate capability.⁸⁵ We also found that mesopores have a more important role than micropores to energy storage. It is exactly consistent with our experimental results. For the attribute of biomass itself, the aspect ratio has a greater impact than the cellulose content on the capacitance. Therefore, it is a key issue to explore a kind of biomass with appropriate aspect ratio as well as the relationship between precursor and activated carbon in the future. The figure also shows that the feature like N (%), D_{ave} , $I_{\text{D}}/I_{\text{G}}$ has lower relative importance comparing with other structure features.

5. Conclusion

Active carbon with hierarchically porous structure was fabricated by effective method using a renewable source NF. Immersing into acidified NaClO_2 , acidified H_2O_2 and HF has improved the pore distribution of activated carbon to some extent. HF increases mesopore volumes of the sample. The specific capacitance was higher for the active carbon synthesized from three kinds of acid solution with strong oxidizing property. Under the optimized condition, the NFAC-c with porous structure shows specific capacitance as high as 283 F g^{-1} at a current density of 0.1 A g^{-1} . The superior stability (101.7% capacitance retention after 10 000 cycles) is exhibited in symmetric supercapacitor. Such excellent performance derived from unique structure. Much cellulose, fibers starch, polysaccharide in NF are *in situ* decomposed and oxidized, resulting in carbon sheet fluffy and porous. Furthermore, the dataset with more than 200 samples of biomass-carbon electrode was selected for training ANN model. A three-layer ANN with Levenberg–Marquart Back propagation algorithm has been employed to predict the specific capacitance of supercapacitor. The proposed ANN model being controlled by ten inputs shows a precise prediction of the experimental data with an excellent MSE of 4.39 and a high correlation coefficient of 0.864 after 1000 epochs. In a sense, the attributes of biomass are indirect factors affecting the supercapacitance behavior, while the structure of activated carbon is a direct one. They interact with each other and jointly determine the final electrochemical characteristics. Random forest algorithm successfully weights multiple inputs. S_{BET} , R_s , V_{tot} play more important role among all variables on specific capacitance. The result suggests that the ANN can be used as an effective method for modelling of electrode samples, thus provides a guideline for adjusting ideal bio-carbon structure for supercapacitors in the future.

Conflicts of interest

There are no conflicts to declare.

Acknowledgements

This work was financially supported by the National Natural Science Foundation of China (No. 11774255) and the Key Project of Natural Science Foundation of Tianjin City (No. 17JCZDJ30100).

Notes and references

- 1 Y. Sun and X. Yan, *Sol. RRL*, 2017, **1**, 1700002.
- 2 R. Liu, J. Wang, T. Sun, M. Wang, C. Wu, H. Zou, T. Song, X. Zhang, S. T. Lee, Z. L. Wang and B. Sun, *Nano Lett.*, 2017, **17**, 4240–4247.
- 3 L. Wei, M. Sevilla, A. B. Fuertes, R. Mokaya and G. Yushin, *Adv. Energy Mater.*, 2011, **1**, 356–361.
- 4 Y. Liu, Z. Xiao, Y. Liu and L. Fan, *J. Mater. Chem. A*, 2018, **6**, 160–166.
- 5 R. Thangavel, A. G. Kannan, R. Ponraj, V. Thangavel, D.-W. Kim and Y.-S. Lee, *J. Mater. Chem. A*, 2018, **6**, 17751–17762.
- 6 R. P. Panmand, P. Patil, Y. Sethi, S. R. Kadam, M. V. Kulkarni, S. W. Gosavi, N. R. Munirathnam and B. B. Kale, *Nanoscale*, 2017, **9**, 4801–4809.
- 7 C. Chen, D. Yu, G. Zhao, B. Du, W. Tang, L. Sun, Y. Sun, F. Besenbacher and M. Yu, *Nano Energy*, 2016, **27**, 377–389.
- 8 J. Zhao, Y. Li, G. Wang and W. Tong, *J. Mater. Chem. A*, 2017, **5**, 23085–23093.
- 9 Q. Zhang, K. Han, S. Li, M. Li, J. Li and K. Ren, *Nanoscale*, 2018, **10**, 2427–2437.
- 10 S.-Y. Lu, M. Jin, Y. Zhang, Y.-B. Niu, J.-C. Gao and C. M. Li, *Adv. Energy Mater.*, 2018, **8**, 1702545.
- 11 S. Dong, X. He, H. Zhang, X. Xie, M. Yu, C. Yu, N. Xiao and J. Qiu, *J. Mater. Chem. A*, 2018, **6**, 15954–15960.
- 12 C. Wang, D. Wu, H. Wang, Z. Gao, F. Xu and K. Jiang, *J. Mater. Chem. A*, 2018, **6**, 1244–1254.
- 13 Y. Zhang, H. Jiang and Q. Wang, *Appl. Surf. Sci.*, 2018, **447**, 876–885.
- 14 W. Du, X. Wang, X. Ju, K. Xu, M. Gao and X. Zhang, *J. Electroanal. Chem.*, 2017, **802**, 15–21.
- 15 J. Cui, Y. Xi, S. Chen, D. Li, X. She, J. Sun, W. Han, D. Yang and S. Guo, *Adv. Funct. Mater.*, 2016, **26**, 8487–8495.
- 16 B. Guijarro-Berdinas, B. P. Sánchez and O. F. Romero, *Artif. Intell. Rev.*, 2018, **49**, 281–299.
- 17 T. Weigert, Q. Tian and K. Lian, *J. Power Sources*, 2011, **196**, 4061–4066.
- 18 M. R. Dileep and A. Danti, *Appl. Artif. Intell.*, 2018, **32**, 281–292.
- 19 U. Grömping, *Am. Stat.*, 2009, **63**, 308–319.
- 20 S. Boonprong, C. Cao, W. Chen and S. Bao, *Remote Sens.*, 2018, **10**, 3–15.
- 21 A. Elmouwahidi, J. Castelo-Quibèn, J. F. Vivo-Vilches, A. F. Pérez-Cadenas, F. G. Maldonado-Hòdar and F. Carrasco-Marín, *Chem. Eng. J.*, 2018, 1835–1841.



- 22 P. Yu, Z. Zhang, L. Zheng, F. Teng, L. Hu and X. Fang, *Adv. Energy Mater.*, 2016, **6**, 160111.
- 23 M. Wang, T. Wang, P. Cai and X. Chen, *Small Methods*, 2019, 1900025–1900032.
- 24 A. A. Hameed, B. Karlik and M. S. Salman, *Knowl. Based Syst.*, 2016, **114**, 79–87.
- 25 N. Abolhassani Monfared, N. Gharib, H. Moqtaderi, M. Hejabi, M. Amiri, F. Torabi and A. Mosahebi, *J. Power Sources*, 2006, **158**, 932–935.
- 26 M. R. G. Marques, J. Wolff, C. Steigemann and M. A. L. Marques, *Phys. Chem. Chem. Phys.*, 2019, **21**, 6506–6516.
- 27 Y. Wang, Y. Song and Y. Xia, *Chem. Soc. Rev.*, 2016, **45**, 5925–5950.
- 28 C. Zhao, Y. Huang, C. Zhao, X. Shao and Z. Zhu, *Electrochim. Acta*, 2018, **291**, 287–296.
- 29 A. R. Reed and P. T. Williams, *Int. J. Energy Res.*, 2004, **28**, 131–145.
- 30 R. Biswas, H. Uellendahl and B. K. Ahring, *BioEnergy Res.*, 2015, **8**, 1101–1116.
- 31 Z. Yang and Y. Lin, *Eng. Computation.*, 2018, **35**, 1625–1638.
- 32 T. D. Dongale, K. P. Patil, S. R. Vanjare, A. R. Chavan, P. K. Gaikwad and R. K. Kamat, *J. Comput. Sci.*, 2015, **11**, 82–90.
- 33 J. N. Marie-Francoise, H. Gualous and A. Berthon, *IEE Proc. Elec. Power Appl.*, 2006, **153**, 255–262.
- 34 Y. LeCun, Y. Bengio and G. Hinton, *Nature*, 2015, **521**, 436–444.
- 35 M. A. Mohammed, M. K. Abd Ghani, N. Arunkumar, R. I. Hamed, M. K. Abdullah and M. A. Burhanuddin, *Future Gener. Comput. Syst.*, 2018, **89**, 539–547.
- 36 M. Jahangoshai Rezaee, M. Jozmaleki and M. Valipour, *Phys. A*, 2018, **489**, 78–93.
- 37 A. Eddahech, O. Briat, M. Ayadi and J.-M. Vinassa, *Electr. Power Syst. Res.*, 2014, **106**, 134–141.
- 38 H. L. Ishwaran and M. Lu, *Stat. Med.*, 2019, **38**, 558–582.
- 39 K. J. Archer and R. V. Kimes, *Comput. Stat. Data Anal.*, 2008, **52**, 2249–2260.
- 40 Q. Zhao, L. Su, Z. Shi, P. Ling, N. Yan, C. Gu and Z. Shi, *IoPARTS*, 2018, 60–65.
- 41 W. Chen, S. Zhang, R. Li and H. Shahabi, *Sci. Total Environ.*, 2018, **644**, 1006–1018.
- 42 S. K. S. Fan, C. J. Su, H. T. Nien, P. F. Tsai and C. Y. Cheng, *Soft Computing*, 2017, **22**, 5707–5718.
- 43 B. Zhu, B. Liu, C. Qu, H. Zhang, W. Guo, Z. Liang, F. Chen and R. Zou, *J. Mater. Chem. A*, 2018, **6**, 1523–1530.
- 44 E. Raymundo-Piñero, M. Cadek and F. Béguin, *Adv. Funct. Mater.*, 2009, **19**, 1032–1039.
- 45 H. Yin, B. Lu, Y. Xu, D. Tang, X. Mao, W. Xiao, D. Wang and A. N. Alshawabkeh, *Environ. Sci. Technol.*, 2014, **48**, 8101–8108.
- 46 Y. Li, G. Wang, T. Wei, Z. Fan and P. Yan, *Nano Energy*, 2016, **19**, 165–175.
- 47 A. K. Mondal, K. Kretschmer, Y. Zhao, H. Liu, H. Fan and G. Wang, *Microporous Mesoporous Mater.*, 2017, **246**, 72–80.
- 48 Q. Yao, H. Wang, C. Wang, C. Jin and Q. Sun, *ACS Sustainable Chem. Eng.*, 2018, **6**, 4695–4704.
- 49 D.-W. Wang, F. Li, M. Liu, G. Q. Lu and H.-M. Cheng, *Angew. Chem.*, 2008, **120**, 379–382.
- 50 X. L. Su, M. Y. Cheng, L. Fu, J. H. Yang, X. C. Zheng and X. X. Guan, *J. Power Sources*, 2017, **362**, 27–38.
- 51 J. Shao, F. Ma, G. Wu, C. Dai, W. Geng, S. Song and J. Wan, *Chem. Eng. J.*, 2017, **321**, 301–313.
- 52 L. Zhi, T. Li, H. Yu, S. Chen, L. Dang, H. Xu, F. Shi, Z. Liu and Z. Lei, *Carbon*, 2017, **113**, 100–107.
- 53 R. Wang, D. Jin, Y. Zhang, S. Wang, J. Lang, X. Yan and L. Zhang, *J. Mater. Chem. A*, 2017, **5**, 292–302.
- 54 Y. Zhang, S. Liu, X. Zheng, X. Wang, Y. Xu, H. Tang, F. Kang, Q.-H. Yang and J. Luo, *Adv. Funct. Mater.*, 2017, **27**, 1604687.
- 55 W. Liu, G. Liu, Q. Kou and S. Xiao, *RSC Adv.*, 2017, **7**, 33875–33882.
- 56 D. Kang, Q. Liu, J. Gu, Y. Su, Z. Wang and D. Zhang, *ACS Nano*, 2015, **9**, 11225–11233.
- 57 I. I. G. Inal, S. M. Holmes and E. Yagmur, *J. Ind. Eng. Chem.*, 2018, **61**, 124–132.
- 58 X. Tian, H. Ma, Z. Li, S. Yan, L. Ma, F. Yu, G. Wang, X. Guo, Y. Ma and C. Wong, *J. Power Sources*, 2017, **359**, 88–96.
- 59 R. Wang, P. Wang, X. Yan, J. Lang, C. Peng and Q. Xue, *ACS Appl. Mater. Interfaces*, 2012, **4**, 5800–5806.
- 60 C. Wang, D. Wu, H. Wang, Z. Gao, F. Xu and K. Jiang, *J. Colloid Interface Sci.*, 2018, **523**, 133–143.
- 61 J. Liu, H. Li and H. Zhang, *J. Solid State Electrochem.*, 2017, **257**, 64–71.
- 62 H. Wei, H. Chen, N. Fu, J. Chen and G. Lan, *Electrochim. Acta*, 2017, **203**, 403–411.
- 63 J. Wan, S. Qu, C. Dai, T. Jin and F. Ma, *J. Alloys Compd.*, 2018, **751**, 107–116.
- 64 J. Xia, N. Zhang, S. Chong, D. Li, Y. Chen and C. Sun, *Green Chem.*, 2018, **20**, 694–700.
- 65 F. Xu, Z. Tang, S. Huang, L. Chen, Y. Liang, W. Mai, H. Zhong, R. Fu and D. Wu, *Nat. Commun.*, 2015, **6**, 7221.
- 66 S. Han, D. Wu, S. Li, F. Zhang and X. Feng, *Adv. Mater.*, 2014, **26**, 849–864.
- 67 C. Chen, D. Yu, G. Zhao, B. Du, W. Tang, L. Sun, Y. Sun, F. Besenbacher and M. Yu, *Nano Energy*, 2016, **27**, 377–389.
- 68 W. Yu, H. Wang, S. Liu, N. Mao, X. Liu, J. Shi, W. Liu, S. Chen and X. Wang, *J. Mater. Chem. A*, 2016, **4**, 5973–5983.
- 69 L. Chen, T. Ji, L. Mu and J. Zhu, *Carbon*, 2017, **111**, 839–848.
- 70 Z. Li, L. Zhang, B. S. Amirkhiz, X. Tan, Z. Xu, H. Wang, B. C. Olsen, C. M. B. Holt and D. Mitlin, *Adv. Energy Mater.*, 2012, **2**, 431–437.
- 71 M. Biswal, A. Banerjee, M. Deo and S. Ogale, *Energy Environ. Sci.*, 2013, **6**, 1249–1259.
- 72 D. Yu, C. Chen, Z. Li, Y. Sun and G. Zhao, *ChemSusChem*, 2018, **11**, 1678–1685.
- 73 Z.-Y. Jin, A. H. Lu, Y.-Y. Xu, J.-T. Zhang and W.-C. Li, *Adv. Mater.*, 2014, **26**, 3700–3705.
- 74 J. Yan, C. E. Ren, K. Maleski, C. B. Hatter, B. Anasori, P. Urbankowski, A. Sarycheva and Y. Gogotsi, *Adv. Funct. Mater.*, 2017, **27**, 1701264.
- 75 W. Zhang, H. Lin, Z. Lin, J. Yin, H. Lu, D. Liu and M. Zhao, *ChemSusChem*, 2015, **8**, 2114–2122.
- 76 B. Liu, Y. Liu, H. Chen, M. Yang and H. Li, *J. Power Sources*, 2017, **341**, 309–317.



- 77 Y. Huang, Y. Liu and G. Zhao, *J. Mater. Sci.*, 2017, **52**, 478–488.
- 78 M. Wahid, D. Puthusseri and D. Phase, *Energy Fuels*, 2014, **28**, 4233–4240.
- 79 Y. Huang, L. Peng, Y. Liu, G. Zhao, J. Y. Chen and G. Yu, *ACS Appl. Mater. Interfaces*, 2016, **8**, 15205–15215.
- 80 H. Feng, H. Hu, H. Dong, Y. Xiao, Y. Cai, B. Lei, Y. Liu and M. Zheng, *J. Power Sources*, 2016, **302**, 164–173.
- 81 A. Zamaniyana, F. Joda, A. Behroozsarand and H. Ebrahimi, *Int. J. Hydrogen Energy*, 2013, **38**, 6289–6297.
- 82 A. H. A. Al-Waeli, K. Sopian, J. H. Yousif, H. A. Kazem, J. Boland and M. T. Chaichan, *Energy Convers. Manage.*, 2019, **186**, 368–379.
- 83 F. Yang, H. Zhang, X. Hou, Y. Tian and Y. Xu, *Energy*, 2019, **175**, 630–644.
- 84 S. Gao, X. Li, L. Li and X. Wei, *Nano Energy*, 2017, **33**, 334–342.
- 85 Z. Li, Z. Xu, X. Tan, H. Wang, C. M. B. Holt, T. Stephenson, B. C. Olsen and D. Mitlin, *Energy Environ. Sci.*, 2013, **6**, 871–875.

