

Design and stabilisation of a high area iron molybdate surface for the selective oxidation of methanol to formaldehyde

Stephanie Chapman,^{ab} Catherine Brookes,^{bc} Michael Bowker,^{bc}
Emma K. Gibson^{bd} and Peter P. Wells^{*bd}

Received 4th November 2015, Accepted 8th December 2015

DOI: 10.1039/c5fd00153f

The performance of Mo-enriched, bulk ferric molybdate, employed commercially for the industrially important reaction of the selective oxidation of methanol to formaldehyde, is limited by a low surface area, typically 5–8 m² g⁻¹. Recent advances in the understanding of the iron molybdate catalyst have focused on the study of MoO_x@Fe₂O₃ (MoO_x shell, Fe₂O₃ core) systems, where only a few overlayers of Mo are present on the surface. This method of preparing MoO_x@Fe₂O₃ catalysts was shown to support an iron molybdate surface of higher surface area than the industrially-favoured bulk phase. In this research, a MoO_x@Fe₂O₃ catalyst of even higher surface area was stabilised by modifying a haematite support containing 5 wt% Al dopant. The addition of Al was an important factor for stabilising the haematite surface area and resulted in an iron molybdate surface area of ~35 m² g⁻¹, around a 5 fold increase on the bulk catalyst. XPS confirmed Mo surface-enrichment, whilst Mo XANES resolved an amorphous MoO_x surface monolayer supported on a sublayer of Fe₂(MoO₄)₃ that became increasingly extensive with initial Mo surface loading. The high surface area MoO_x@Fe₂O₃ catalyst proved amenable to bulk characterisation techniques; contributions from Fe₂(MoO₄)₃ were detectable by Raman, XAFS, ATR-IR and XRD spectroscopies. The temperature-programmed pulsed flow reaction of methanol showed that this novel, high surface area catalyst (3ML-HSA) outperformed the undoped analogue (3ML-ISA), and a peak yield of 94% formaldehyde was obtained at ~40 °C below that for the bulk Fe₂(MoO₄)₃ phase. This work demonstrates how core-shell, multi-component oxides offer new routes for improving catalytic performance and understanding catalytic activity.

^aUniversity of Southampton, Southampton, SO17 1BJ, UK

^bUK Catalysis Hub, Research Complex at Harwell, RAL, Oxford, OX11 0FA, UK. E-mail: peter.wells@rc-harwell.ac.uk

^cCardiff University, Cardiff, CF10 3XQ, UK

^dUniversity College London, London, WC1H 0AJ, UK



Introduction

Mixed-metal oxides are employed extensively as selective-oxidation catalysts and, in this capacity, iron and bismuth molybdates are a paragon. Whilst bismuth molybdate is a well-known catalyst for the oxidation and ammoxidation of olefins,^{1,2} iron molybdate is employed extensively for the selective oxidation of methanol to formaldehyde. The latter is a reaction of particular industrial importance, given that global demand for formaldehyde exceeds 30 million tonnes pa.³

Despite their industrial significance, the application of iron and bismuth molybdates is hindered by low surface areas (typically $< 6 \text{ m}^2 \text{ g}^{-1}$),^{4,5} which limit the catalytic performance. Recent catalysis literature is largely devoted to the study of nanoparticle (NP) catalysts. Such systems can afford high mass activities and often exhibit exceptional properties compared to those materials prepared by conventional routes. Since nearly 50% of industrial formaldehyde production uses bulk-phase ferric molybdate,⁶ the development of nanoscale systems as a means of catalyst optimisation is hugely relevant.

Bowker,⁷ Brookes,^{8,9} and others^{10,11} have investigated haematite-supported molybdena, $\text{MoO}_x@Fe_2O_3$, a shell@core system that comprises layers of molybdena deposited on haematite nanoparticles by thermal spreading,¹⁰ or incipient wetness impregnation.^{7-9,11} The shell@core catalyst was designed to isolate the catalytic contribution of surface molybdenum from that in the ferric molybdate bulk.⁸ By studying the model system, the catalyst activity has since been attributed to a well-dispersed layer of amorphous or low-dimensional crystalline molybdena (MoO_x) at the surface.¹² Notably, Brookes *et al.* reported improved catalytic activity using the $\text{MoO}_x@Fe_2O_3$ catalyst, *versus* the ferric molybdate bulk phase, which was attributed to a 3–4-fold greater surface area in the former.⁹ It is thus proposed that by supporting the monolayer of catalytic molybdena at higher surface areas, an enhanced performance can be achieved.

Whilst dispersion of molybdena on inherently high surface area supports, such as alumina, titania and silica, has been documented,¹³ these materials favour inhomogeneous growth and distribution of molybdena. An exposed support reduces formaldehyde selectivity by promoting the formation of carbon monoxide and carbon dioxide by-products.¹⁴ In contrast, XAFS studies have shown that a solid state reaction between surface MoO_3 crystallites and bulk haematite generates a subsurface layer of catalytic $\text{Fe}_2(\text{MoO}_4)_3$.¹⁵ The interaction between the molybdena and ferric molybdate subsurface promotes high selectivity for formaldehyde; hence haematite is the favoured catalyst support.

In addition to applications as a support, nanoparticulate haematite finds widespread use in catalysis, including the oxidation of carbon monoxide,¹⁶ photocatalytic splitting of water,¹⁷ biomass conversion,¹⁸ and catalytic combustion.¹⁹ Although an inherently high energy of crystallisation of iron oxides affords surface areas in excess of $100 \text{ m}^2 \text{ g}^{-1}$,²⁰ high-temperature crystallisation of haematite leads to sintering and surface area losses.²¹

For the purpose of methanol oxidation, it is desirable to preserve the chemical properties of haematite and yet maintain higher surface areas to improve the catalyst performance. Herein, aluminium-doped haematite has been used as a support for a molybdena catalyst. The support has been found to retain the



characteristics of hematite but a greater resistance to sintering has sustained a higher surface area of catalytic molybdena. Although the influence of the Al-dopant on the structure of iron oxide has been discussed extensively,^{22–24} to our knowledge, the application of such materials in the context of a catalyst support material is a novel application.

Experimental

Catalyst preparation

The bulk materials were synthesised by co-precipitation. Dilute HNO₃ (70%, Sigma Aldrich) at pH 2 was maintained at 60 °C under stirring, whilst an aqueous solution of iron(III) nitrate nonahydrate (Sigma Aldrich) was added in a dropwise manner. The solution was then evaporated to dryness under stirring at 90 °C. The brick-red solid was dried at 120 °C for 24 hours before calcination in air at 500 °C for 24 hours. A 5 wt% aluminous haematite support was prepared by an analogous route, except that the aqueous iron nitrate solution was added dropwise to a stirred solution of aluminium(III) nitrate nonahydrate (Sigma Aldrich) at 60 °C.

The shell@core catalysts were prepared by incipient wetness impregnation of haematite.^{7,9} An aqueous solution of ammonium heptamolybdate tetrahydrate (Sigma Aldrich) was prepared at a concentration to deliver the desired number of molybdena monolayer equivalents at the point of incipient wetness.

Characterization

Brunauer–Emmett–Teller (BET) surface area measurements were performed under nitrogen at 77 K using the Quantachrome quadrasorb SI gas sorption system. Samples were prepared by outgassing at 250 °C for 2 hours and then backfilled with nitrogen prior to analysis. Scanning electron microscopy energy dispersive X-ray (SEM-EDX) analysis was performed using the JEOL 6610LV apparatus, with solid samples adhered to a conductive carbon tab. EDX analysis was performed using AZtec software (Oxford Instruments plc) with the elemental composition determined under 'Point and ID' acquisition mode. Transmission electron microscopy (TEM)-EDX and scanning transmission electron microscopy (STEM) used the JEOL JEM 2100 EM system by dispersing the sample in ethanol before transfer to a lacey carbon-coated Cu grid. Raman spectroscopy was performed using the Renishaw inVia Raman microscope with laser irradiation at 830 nm. Data acquisition was performed at 1% maximal laser power, with four accumulations, each with 10 seconds exposure time. The Rigaku Miniflex goniometer was used to obtain powder X-ray diffraction (XRD) spectra, with analyses performed under continuous scan mode using Cu K_α radiation ($\lambda = 1.5406 \text{ \AA}$). Rietveld refinement was performed using CelRef software. X-ray absorption fine structure (XAFS) spectra were obtained on beamline B18 at the Diamond Light Source, UK. A QEXAFS setup was used for the measurements, performed using a fast-scanning Si(311) double crystal monochromator. Samples were diluted with cellulose and pelletised prior to analysis, which comprised six scans at the Mo K edge (20 000 eV), each of 1 minute ($K_{\text{max}} = 15 \text{ \AA}^{-1}$). *In situ* diffuse reflectance infrared Fourier transform spectroscopy (DRIFTS) was performed in a Harrick high temperature DRIFTS cell fitted with ZnSe windows. The cell was attached to the Praying Mantis Optics and spectra collected with an Agilent Carey 680 FTIR



spectrometer, taking 64 scans with a resolution of 4 cm^{-1} using the DTGS detector. X-ray photoelectron spectroscopy (XPS) spectra were collected using the ESCALAB 220 spectrometer equipped with Al and Mg K_{α} sources. Al K_{α} (1486.6 eV) irradiation was used to prevent Fe Auger peaks overlapping with the Fe $2p_{1/2}$ and Fe $2p_{3/2}$ peaks.

Catalyst testing

The catalyst reactivity was studied using the CATLAB combined microreactor–mass spectrometer setup (Hidden Ltd., Warrington, UK). For the temperature-programmed desorption (TPD) analysis, injections of methanol ($1\ \mu\text{L}$) were dosed on to the catalyst at $40\ ^{\circ}\text{C}$, under He ($30\ \text{mL min}^{-1}$), until real-time mass spectroscopic monitoring showed saturation (~ 8 injections). A temperature ramp of $8\ ^{\circ}\text{C min}^{-1}$ was applied to $400\ ^{\circ}\text{C}$, which was then sustained for 10 minutes. The temperature-programmed pulsed flow reaction (TPPFR) involved injection of methanol ($1\ \mu\text{L}$) at 2 minute intervals under a flow of $10\%\ \text{O}_2/\text{He}$ ($30\ \text{mL min}^{-1}$), during which time the temperature was ramped by $8\ ^{\circ}\text{C min}^{-1}$ to $400\ ^{\circ}\text{C}$. In all analyses, the outlet gas was continuously monitored by mass spectrometry. Mass spectroscopic data has been corrected for spectrometer-induced processes. The formaldehyde signal (mass 30) is corrected for the contributions of methanol cracking (masses 28 and 29) and oxidation to CO_2 (mass 44) on the mass spectrometer filament. The CO_2 signal is adjusted for methanol (mass 31) and formaldehyde combustion on the filament. The CO (mass 28) signal is corrected for methanol and formaldehyde fragmentation and oxidation, and CO_2 cracking.

Results and discussion

In order to establish that the doped support retained the properties of the host compound, a commercially-sourced haematite nanopowder ($<50\ \text{nm}$ particle size (BET), Sigma Aldrich) was used as a reference. Gas sorption studies revealed that there was negligible decrease in the surface area ($22\ \text{m}^2\ \text{g}^{-1}$ to $21\ \text{m}^2\ \text{g}^{-1}$) of the commercial haematite following a typical calcination protocol. However, by introducing 5 wt% Al dopant, the post-calcination surface area was doubled, to $46\ \text{m}^2\ \text{g}^{-1}$ (from $111\ \text{m}^2\ \text{g}^{-1}$ as-synthesised).

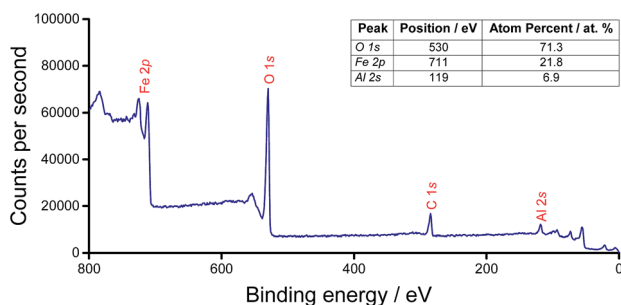


Fig. 1 Widescan XPS spectrum of $\text{Al}_x\text{Fe}_{(2-x)}\text{O}_3$ and table, inset, of the associated surface composition.



The nature of the aluminium incorporation in $\text{Al}_x\text{Fe}_{(2-x)}\text{O}_3$ was investigated by XPS, and this was consistent with isomorphous substitution of Al into the bulk (Fig. 1). The XPS spectrum did not indicate any preferential segregation of Al. This contrasts with ferric molybdate systems ($\text{Mo/Fe} < 1.5$), for which segregation is apparent by a surface Mo loading 2–3 times the theoretical bulk phase.²⁵ In addition to the Al^{3+} peak at 119 eV, Fe $2p_{3/2}$ and $2p_{1/2}$ peaks at 725 eV and 711 eV, respectively, are consistent with high-spin Fe^{3+} of haematite. Lattice oxygen at a binding energy of 530 eV was identified.²⁶

XRD analysis of $\text{Al}_x\text{Fe}_{(2-x)}\text{O}_3$ was similar to that of haematite except that the peaks for $\text{Al}_x\text{Fe}_{(2-x)}\text{O}_3$ were displaced to a higher angle than in commercial $\alpha\text{-Fe}_2\text{O}_3$ (Fig. 2). Under Bragg's Law, this implied a reduction in the d -spacing on introducing aluminium.²⁶

Changes in lattice parameters were quantified by Rietveld refinement in the space group $R\bar{3}cH$ (Table 1), which indicated reductions along both the a - and c -axes. Suppressed unit cell growth in aluminous haematite has been documented previously.^{23,27} Where $\alpha\text{-Al}_2\text{O}_3$ and $\alpha\text{-Fe}_2\text{O}_3$ share the corundum crystal structure, the formation of a solid solution of trivalent cations is relatively facile. In affecting isomorphous substitution of Fe^{3+} ($r = 0.645 \text{ \AA}$) by the smaller Al^{3+} ion ($r = 0.535 \text{ \AA}$),²⁸ atomic displacement and altered electrostatic interactions introduce lattice strain. This is manifested as smaller crystallites and an enhanced surface area in Al-doped haematites.^{22,26} Raman spectroscopy confirmed the reduced particle dimensions of $\text{Al}_x\text{Fe}_{(2-x)}\text{O}_3$ versus commercial haematite through a blue shift in the excitation bands originating from quantum confinement effects (Fig. 3).²⁹ Additionally, where the substitution of Fe^{3+} with smaller Al^{3+} centres decreases atomic separation and concomitantly increases bond force constants, Raman bands have been shifted to a higher energy.^{23,30} Another consequence of the reduced grain size is peak broadening, since phonon confinement necessitates an increase in photon momentum distribution. Some loss of crystallinity on the introduction of Al (supported by a less intense XRD pattern) may have contributed to the broadened Raman bands.^{23,30–32}

TPD analysis was used to compare the reaction profile of Al-doped haematite with that of phase-pure haematite. Mass spectrometric measurements revealed high-temperature CO_2 and H_2 production, which was attributed to methanol decomposition *via* the formate intermediate. Water was desorbed in two peaks, the first coincident with methanol (an aqueous solution), and the second high-temperature desorption was accompanied by CO_2 as a product of combustion.

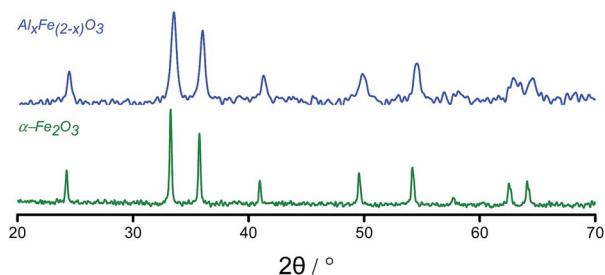


Fig. 2 XRD powder patterns of $\text{Al}_x\text{Fe}_{(2-x)}\text{O}_3$ and a phase-pure haematite reference sample.



Table 1 Optimised lattice dimensions, determined by Rietveld refinement in the space group $R\bar{3}cH$, and Scherrer crystallite sizes for the haematite supports

Haematite support	BET multipoint surface area/m ² g ⁻¹	Optimised lattice parameters/Å		Optimised cell volume/Å ³	Scherrer crystallite size/nm	E_a (CO ₂)/kJ mol ⁻¹
		<i>a</i>	<i>c</i>			
Theoretical ³⁴	—	5.0382	13.7721	302.7	—	—
Commercial	21	5.0273	13.7245	300.4	37	182
Al _x Fe _(2-x) O ₃	45	4.9933	13.6266	294.2	14	186

The combustion of methanol under oxidative conditions is typical of haematite catalysis.⁶ However, methanol TPD reveals a notable distinction between the behaviour of Al_xFe_(2-x)O₃ and that of commercial haematite (Fig. 4). For the Al-doped sample, CO₂ evolution is shifted to a higher temperature, which is consistent with the smaller particle size, noted previously. The decreased grain size leads to a concomitant increase in the surface free energy due to more acute curvature of the surface and a prevalence of low-coordinate sites. Where the adsorption of the bidentate formate intermediate satisfies surface valencies, mutual stabilisation yields stronger surface-adsorbate interactions that compel a larger energy input to initiate the reaction. Based on first order CO₂ production,²⁶ the Redhead equation has been used to approximate the activation energy of formate decomposition from the peak desorption temperature of CO₂ (Table 1).³³

Characterisation of the shell@core catalysts

The commercial haematite (ISA) and the Al-doped haematite (HSA) support materials were coated with molybdena to produce shell@core catalysts. Methanol TPD performed on the theoretical one monolayer (ML) catalysts showed high-temperature CO₂ production, indicative of exposed iron clusters.^{8,25} Since 1 ML molybdena did not provide full surface coverage, catalysts of theoretical 3 ML coverage were studied.

Relative to the haematite supports, α -MoO₃ has an exceptionally low surface area (<1 m² g⁻¹). Whilst our own work shows that the surface area of the shell@core catalyst is diminished with increasing monolayer coverage (Table 2),⁹

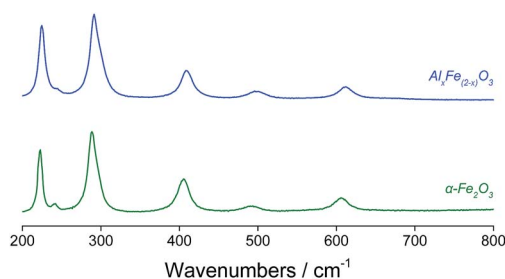


Fig. 3 Raman spectra of Al-doped and phase-pure haematite.



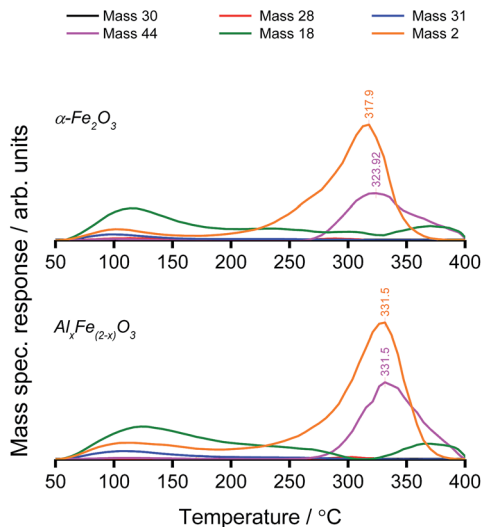


Fig. 4 TPD profiles of the haematite supports under linear temperature ramp, following methanol adsorption. The masses displayed correspond to HCHO (black), CO (red), CH₃OH (blue), CO₂ (purple), H₂O (green) and H₂ (orange).

these systems still offer a higher surface area than bulk Fe₂(MoO₄)₃; one of their principal advantages.

The Mo content of 3 ML systems, determined by SEM-EDX analysis, correlated with their theoretical values (Table 3). XPS analyses provided evidence of surface segregation, with Mo loading in vast excess of a theoretical bulk phase (Table 3). If XPS was completely surface-specific, the 3 ML catalysts should show the same atom percent Mo, corresponding to the MoO_x surface monolayer. However, XPS does, to some extent, penetrate the surface (~1 nm depth).⁶ At a higher surface area, conversion of haematite to Fe₂(MoO₄)₃ is more extensive and hence there is a greater concentration of Mo at the surface. Electron binding energies from XPS affirmed that Al, Fe and Mo cations were in their maximum oxidation states of +3, +3 and +6, respectively.³⁵

The Mo surface-segregation, evidenced by XPS, is well-documented in the literature.^{8,9,11,36} Therefore, it is reasonable to treat Mo as being localised at the surface. On tuning the energy of the X-ray radiation to the molybdenum K-edge (20 000 eV),³⁷ XAFS can be used to analyse the surface structure of the shell@core catalysts.

Table 2 Evidence of surface area losses with increasing molybdena loading on aluminium-doped haematite

Theoretical number of MoO _x -monolayers on the Al _x Fe _(2-x) O ₃ support/ML	Surface area/m ² g ⁻¹
0	46
1	45
3	35
6	30



Table 3 Mo content of 3 ML shell@core catalysts determined by SEM-EDX (theoretical Mo content determined by relative surface areas). Also, theoretical and XPS Mo content of 3 ML shell@core catalysts

Material	Surface area/ $\text{m}^2 \text{g}^{-1}$	SEM Mo content/wt%			XPS		Mo content of theoretical bulk phase/atom%
		Theoretical	SEM-EDX	σ	Mo 3d peak position/eV	XPS Mo content/atom%	
α -MoO ₃	1	66.7	62.2	0.4	—	—	—
Fe ₂ (MoO ₄) ₃	3	48.7	46.1	0.4	—	—	—
3 ML MoO _x @ISA	15	3.0	2.8	0.1	232.065	5.12	1.1
3 ML MoO _x @HSA	35	7.3	7.6	0.2	232.743	5.29	2.0

The X-ray absorption near-edge structure (XANES) region was used to establish the coordination environment of Mo in the shell@core catalysts with 1, 3 and 6 ML surface coverages on the HSA support (Table 4). Two features are assigned in the XANES spectra (Fig. 5).^{7,38} The first is a pre-edge peak at 20 010 eV, attributed to the dipole-forbidden, quadrupole-allowed $1s \rightarrow 4d$ transition. The pre-edge absorption is weak for Mo in a distorted octahedral environment (as in molybdena) but increases in intensity with tetrahedral character (as in Fe₂(MoO₄)₃). The second feature is an intense white line at \sim 20 020 eV from the dipole-allowed $1s \rightarrow 5p$ transition, characteristic of Mo in (distorted) octahedral geometry.

The structure of the Mo-XANES is typical for a MoO_x@Fe₂O₃ catalyst.^{8,9} From initial inspection, the increasing intensity of the pre-edge peak, with simultaneous diminution of the K-edge, indicates that the proportion of Mo in tetrahedral geometry increases with the level of surface doping. It is possible to quantify the proportion of octahedral and tetrahedral Mo by performing a linear combination fit (LCF), against suitable references (Table 4).

For the 1 ML catalyst, all Mo is in the (pseudo-)octahedral geometry and comprises the amorphous MoO_x surface phase.⁹ At loadings in excess of 1 ML, an octahedral component from the MoO_x monolayer remains but subsurface layers are increasingly converted to Fe₂(MoO₄)₃. For the 3 ML and 6 ML catalysts, a tetrahedral component to Mo geometry indicates dopant levels in excess of monolayer coverage, where surplus Mo has reacted with the haematite core to form Fe₂(MoO₄)₃.

Table 4 The ratio of Mo environments in calcined MoO_x@HSA catalysts determined by a linear combination fit against octahedral (pre-calcined catalyst) and tetrahedral (Fe₂(MoO₄)₃) references

Theoretical molybdena coverage/ML	Proportion of Mo in octahedral geometry	Proportion of Mo in tetrahedral geometry	R-Factor
1	1.000	0.000	0.0055310
3	0.605	0.395	0.0007580
6	0.275	0.725	0.0007589



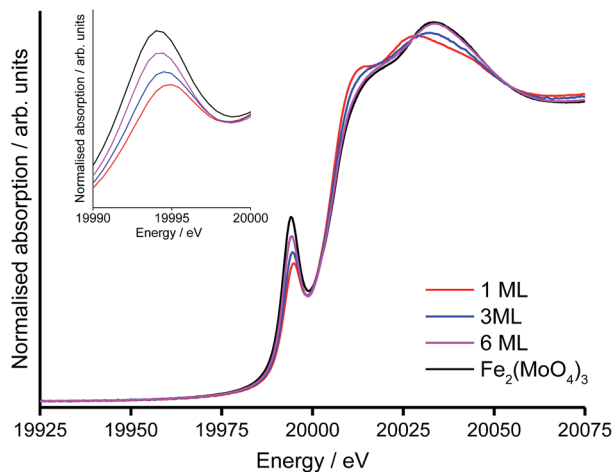


Fig. 5 Normalised Mo-XANES for 1, 3, 6 ML MoO_x @HSA catalysts, including an enlargement of the pre-edge region.

DRIFTS analysis of the shell@core catalysts

In situ diffuse reflectance infrared Fourier transform spectroscopy (DRIFTS) was used to monitor surface-bound intermediates during TPD of methanol. In studying the surface structure and Lewis acidity of the shell@core catalysts, methanol is a particularly informative probe, revealing the catalyst behaviour under reaction conditions.³⁹

The DRIFTS study of the 3ML@ISA and 3ML@HSA catalysts is consistent with a dual adsorption pathway,⁴⁰ two methanolic surface species being detected (Fig. 6). The O–H group of methanol, adsorbed non-dissociatively, is identified by stretching vibrations at $3100\text{--}3500\text{ cm}^{-1}$ and a bending mode at $\sim 1370\text{ cm}^{-1}$. Also, a pair of intense bands at ~ 2950 and 2850 cm^{-1} correspond to the symmetric stretch and the first overtone of the symmetric bend of the methanol C–H bonds, respectively.⁴⁰ An analogous pair of bands in the C–H region (2930 and 2830 cm^{-1}) identifies methoxy formed by dissociative chemisorption of methanol.

The C–H region is particularly informative and combination bands possess unusual intensities due to Fermi resonance between the symmetric C–H stretch and the first overtone of the corresponding symmetric deformation.^{40,41} Through the C–H band position, DRIFTS can reveal surface acid–base character. Over metal oxides of strong Lewis base character, surface oxygen or adsorbed hydroxyl may abstract the alcoholic proton from adsorbed CH_3OH . Thus, IR can distinguish the low frequency C–H stretch of anionic methoxide on a basic support ($\sim 2910/2800\text{ cm}^{-1}$) from the intermediate bands of methoxy on moderately Lewis-acidic oxides ($2930/2830\text{ cm}^{-1}$) and the high frequency C–H vibrations of undissociated methanol on Lewis acidic surfaces ($2960/2850\text{ cm}^{-1}$).⁴² In the case of the 3 ML catalysts, the strong Lewis acid character, particularly of the 3ML@ISA catalyst, is revealed by the greater intensity of the C–H stretches from adsorbed methanol, relative to methoxy. Overall, the C–H bands are less resolved in



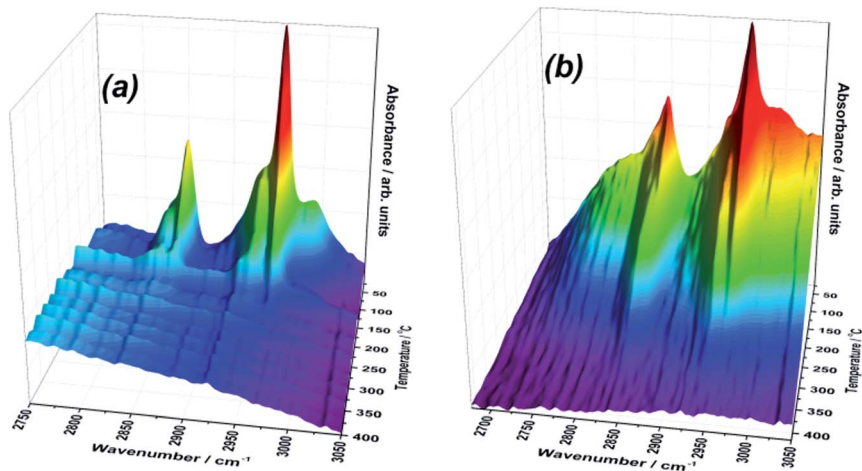


Fig. 6 3D maps of the C–H region of the IR spectra during TPD of methanol from the (a) 3ML@ISA and (b) 3ML@HSA catalysts.

3ML@HSA, which might indicate a greater range of adsorption sites, of varying affinity, for binding the methanolic adsorbate.

Furthermore, by tracking the C–H modes between 3000 and 2750 cm^{-1} , the reaction of surface-bound methanol can be monitored. On applying a temperature ramp, the intensity of the bands associated with surface methoxylation decline, presumably accompanying the reaction of methanol/methoxy to formaldehyde and CO, as evidenced by TPD. Whilst molecular methanol may be the dominant surface species at low temperature, associated C–H bands are lost at lower temperatures compared to those of methoxy, reflecting the stronger surface interactions of the latter.

Some distinctions can be made between the DRIFTS responses of the 3ML@ISA and 3ML@HSA materials. Firstly, bands associated with methanol and methoxy intermediates are absent at 255 °C from the ISA catalyst, whereas these bands are still detected at 315 °C for 3ML@HSA. This result supports micro-reactor TPD, for which formaldehyde (and CO) were stabilised on the HSA catalyst.

For the 3ML@ISA catalyst, the two sharp peaks between 3600 and 3100 cm^{-1} are typical for a non-bonded –OH group, but may be attributed to methanol and hydroxy species, each making consistent interactions with the surface, such that their O–H stretching frequency is well-defined and more intense. In contrast, on exposing 3ML@HSA to methanol, a broad O–H band is observed, indicating extensive intermolecular hydrogen bonding to the adsorbate. The C–H stretching region analysed by DRIFTS previously revealed (from broad C–H stretching bands) a range of binding interactions between 3ML@HSA and the methanolic adsorbate. Variations in the Lewis acid–base interactions between the surface and adsorbate may modify the O–H bond polarity and hence the strength of the hydrogen bond interactions. Since the O–H bond force constant is sensitive to modifications in the intermolecular hydrogen bonding capabilities, a broad range of O–H stretching frequencies is detected.



Temperature-programmed pulse flow reaction of methanol over bulk and shell@core catalysts

Under the temperature-programmed pulse flow reaction (TPPFR) of methanol, the bulk metal oxides show disparate activity (Fig. 7). For $\text{Fe}_2(\text{MoO}_4)_3$, conversion of methanol is initiated at a relatively low temperature ($\sim 100^\circ\text{C}$) but only reaches 100% conversion (T_{100}) at 284°C . Ferric molybdate sustains 100% formaldehyde selectivity (T_{sel}) to 330°C , above which temperature CO is evolved.

In contrast, the Al-doped haematite operates a combustion pathway, converting methanol to CO_2 (with a trivial quantity of CO at low conversion).⁴³ The catalytic activity of the aluminous haematite is inferior to that of ferric molybdate, $\text{Al}_x\text{Fe}_{(2-x)}\text{O}_3$ achieves 50% methanol conversion (T_{50}) at 20°C above that for $\text{Fe}_2(\text{MoO}_4)_3$, which reflects the stabilisation of surface intermediates on the HSA support.

However, when the haematite support is doped with molybdena, the reactivity of the resultant shell@core catalyst is dominated by the surface, where large energetic barriers to oxygen insertion favour formaldehyde desorption.²⁵ Compared to the bulk phases, T_{50} is universally lower for the shell@core systems but decreases as the surface area, and hence access to active sites, is improved (Table 5).

The TPPFR indicated that, of all the shell@core systems, a higher formaldehyde yield is attained with the 3ML@HSA catalyst and the maximum formaldehyde yield (T_{max}) is also shifted to a lower temperature (Table 5). Given that, in TPD, the 3ML@HSA catalyst desorbs formaldehyde at the highest temperature of all the shell@core catalysts, the catalyst must therefore operate a high methanol conversion in the T_{sel} range.

Unlike the $\text{Fe}_2(\text{MoO}_4)_3$ catalyst, the 3ML@HSA catalyst does not achieve 100% formaldehyde yield but between 190 and 255°C the HSA shell@core catalyst outperforms the other systems, selectively oxidising methanol to formaldehyde with high yield. Significantly, the HSA supported molybdena catalyst achieves its

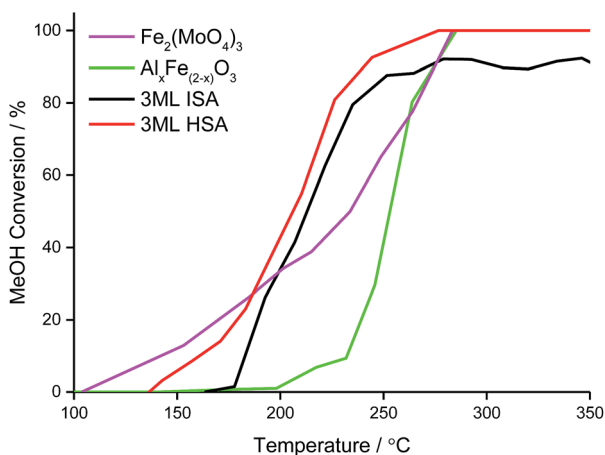


Fig. 7 Methanol conversion during the TPPFR over bulk and shell@core iron molybdate catalysts.



Table 5 The temperatures at which the onset (T_0), 50% (T_{50}) and 100% (T_{100}) methanol conversion are observed for the bulk and shell@core iron molybdate catalysts and the temperature range over which these exhibit 100% formaldehyde selectivity (T_{sel}). Also, the temperatures of the maximum formaldehyde yield (T_{max}) for the bulk and shell@core iron molybdate catalysts during the TPPFR of methanol

System	Surface area/m ² g ⁻¹	$T_0/^\circ\text{C}$	$T_{50}/^\circ\text{C}$	$T_{100}/^\circ\text{C}$	$T_{sel}/^\circ\text{C}$	Maximum formaldehyde yield/%	$T_{max}/^\circ\text{C}$
$\text{Al}_x\text{Fe}_{(2-x)}\text{O}_3$	46	173	253	285	—	0	—
$\text{Fe}_2(\text{MoO}_4)_3$	3	104	233	283	104–344	100	283–344
3ML@HSA	35	143	206	277	143–245	94	244
3ML@ISA	14	178	213	—	178–207	84	252

maximum formaldehyde yield (94%) at $T_{max} \sim 40^\circ\text{C}$ below that for the industrial bulk phase (Fig. 8).

Conclusions

A haematite support with a surface area of $46\text{ m}^2\text{ g}^{-1}$ was successfully synthesised by the introduction of 5 wt% aluminium dopant. XPS analyses favoured a homogeneous distribution of Al and Fe in the haematite framework. Lattice strain induced by the isomorphous substitution of Fe^{3+} for the smaller Al^{3+} cation was found to constrain unit cell growth, particularly along the c dimension, and a reduction in particle size *versus* commercial haematite nanoparticles was evidenced by line broadening in the XRD and Raman spectra. Besides quantum confinement effects, the spectroscopic characteristics of $\text{Al}_x\text{Fe}_{(2-x)}\text{O}_3$ were consistent with phase-pure haematite. Moreover, TPD of methanol revealed combustion products typical of haematite catalysis. A trend towards increased

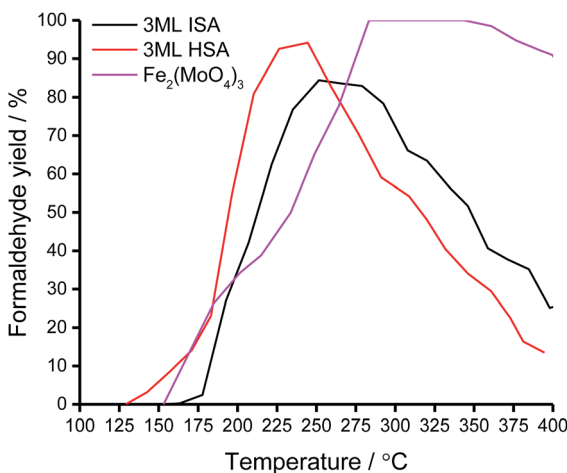


Fig. 8 Formaldehyde yield of the bulk and shell@core iron molybdate catalysts under the TPPFR of methanol.



activation energy of CO₂ production with a higher surface area support was attributed to stabilisation of the antecedent formate intermediate on smaller particles, of higher surface free energy.

In a novel preparation, Al_xFe_(2-x)O₃ was coated with molybdena to yield a shell@core catalyst of surface area 35 m² g⁻¹. On confirming a Mo-rich exterior by XPS, surface analysis was performed by tuning XAFS to the Mo K-edge. All systems maintained a (*pseudo*)-octahedral Mo component of surface MoO_x, though an increase in tetrahedral Mo at higher surface dosing was consistent with a more extensive subsurface Fe₂(MoO₄)₃ formation. For the high surface area shell@core system, the sub-surface Fe₂(MoO₄)₃ phase was identified by XRD, Raman and IR spectroscopies.

In the TPD of methanol, the reactivity of the shell@core catalysts was directed by the molybdena surface. Formaldehyde and CO products were consistent with the methoxy intermediate detected by DRIFTS. The TPPFR of methanol over the shell@core catalyst revealed an increase in peak formaldehyde yield with catalyst surface area, accompanied by a shift of the maximal yield to a lower temperature. Between 190 and 255 °C, the formaldehyde yield over the 3ML@HSA catalyst exceeded that of the other systems. Significantly, the 3ML@HSA catalyst reached the maximum formaldehyde yield (94%) ~40 °C below that for the bulk phase. As such, further catalytic testing of the 3ML@HSA catalyst would focus on isothermal methanol oxidation between 190 and 255 °C to monitor formaldehyde yield over an extended reaction period. As is, the improved catalytic activity of the 3ML@HSA catalyst might be trialled for other reactions for which ferric molybdate catalysis is employed, such as propene,^{44,45} methane⁴⁶ and toluene⁴⁷ oxidation.

Acknowledgements

The UK Catalysis Hub is kindly thanked for resources and support provided *via* our membership of the UK Catalysis Hub Consortium and funded by EPSRC (portfolio grants EP/K014706/1, EP/K014668/1, EP/K014854/1 and EP/K014714/1). EPSRC are thanked for supporting the activities of the UK Catalysis Hub at RCaH and the grant for funding Dr P. P. Wells (Catalytic Science in the Harwell Research Centre EP/I019693/1). Diamond Light Source and the Cardiff Catalysis Institute (CCI) are acknowledged for funding the studentship of Catherine Brookes. The authors wish to acknowledge the Diamond Light Source for provision of beam-time (SP10306). The RCaH are also acknowledged for use of facilities and support of their staff. Dave Morgan of the CCI is thanked for assisting with the XPS data acquisition.

References

- 1 W. J. Linn and A. W. Sleight, *J. Catal.*, 1976, **41**, 134–139.
- 2 J. L. Callahan, R. K. Grasselli, E. C. Milberger and H. A. Strecker, *Ind. Eng. Chem. Prod. Res. Dev.*, 1970, **9**, 134–142.
- 3 S. Kowatsch, *Formaldehyde*, Springer, Berlin Heidelberg, 2010.
- 4 G. W. Keulks, *J. Catal.*, 1970, **19**, 232–235.
- 5 U. Chowdhry, A. Ferretti, L. E. Firment, C. J. Machiels, F. Ohuchi, A. W. Sleight and R. H. Staley, *Appl. Surf. Sci.*, 1984, **19**, 360–372.



- 6 M. Bowker, R. Holroyd, A. Elliott, P. Morrall, A. Alouche, C. Entwistle and A. Toerncrona, *Catal. Lett.*, 2002, **83**, 165–176.
- 7 M. Bowker, C. Brookes, A. F. Carley, M. P. House, M. Kosif, G. Sankar, I. Wawata, P. P. Wells and P. Yaseneva, *Phys. Chem. Chem. Phys.*, 2013, **15**, 12056–12067.
- 8 C. Brookes, P. P. Wells, G. Cibin, N. Dimitratos, W. Jones, D. J. Morgan and M. Bowker, *ACS Catal.*, 2014, **4**, 243–250.
- 9 C. Brookes, P. P. Wells, N. Dimitratos, W. Jones, E. K. Gibson, D. J. Morgan, G. Cibin, C. Nicklin, D. Mora-Fonz, D. O. Scanlon, C. R. A. Catlow and M. Bowker, *J. Phys. Chem. C*, 2014, 26155–26161.
- 10 Y. Huang, L. Cong, J. Yu, P. Eloy and P. Ruiz, *J. Mol. Catal. A: Chem.*, 2009, **302**, 48–53.
- 11 K. Routray, W. Zhou, C. J. Kiely, W. Grünert and I. E. Wachs, *J. Catal.*, 2010, **275**, 84–98.
- 12 M. R. Sun-Kou, S. Mendioroz, J. L. G. Fierro, J. M. Palacios and A. Guerrero-Ruiz, *J. Mater. Sci.*, 1995, **30**, 496–503.
- 13 Y. Matsuoka, M. Niwa and Y. Murakami, *J. Phys. Chem.*, 1990, **94**, 1477–1482.
- 14 C. J. Machiels, W. H. Cheng, U. Chowdhry, W. E. Farneth, F. Hong, E. M. McCarron and A. W. Sleight, *Appl. Catal.*, 1986, **25**, 249–256.
- 15 C. Brookes, M. Bowker, E. K. Gibson, D. Gianolio, K. M. H. Mohammed, S. Parry, S. M. Rogers, I. P. Silverwood and P. P. Wells, *Catal. Sci. Technol.*, 2016, 722–730.
- 16 Y. Zheng, Y. Cheng, Y. Wang, F. Bao, L. Zhou, X. Wei, Y. Zhang and Q. Zheng, *J. Phys. Chem. B*, 2006, **110**, 3093–3097.
- 17 K. Sivula, F. le Formal and M. Grätzel, *ChemSusChem*, 2011, **4**, 432–449.
- 18 A. Khelifa, V. Sharypov, G. Finqueneisel and J. V. Weber, *J. Anal. Appl. Pyrolysis*, 2009, **84**, 84–88.
- 19 G. Picasso Escobar, A. Quintilla Beroy, M. P. Pina Iritia and J. Herguido Huerta, *Chem. Eng. J.*, 2004, **102**, 107–117.
- 20 R. M. Cornell and U. Schwertmann, *The Iron Oxides: Structure, Properties, Reactions, Occurrences and Uses*, Wiley, 2006.
- 21 M. Hermanek, R. Zboril, I. Medrik, J. Pechousek and C. Gregor, *J. Am. Chem. Soc.*, 2007, **129**, 10929–10936.
- 22 U. Schwertmann, R. Fitzpatrick, R. Taylor and D. Lewis, *Clays Clay Miner.*, 1979, **27**, 105–112.
- 23 A. Zoppi, C. Lofrumento, E. M. Castellucci and P. Sciau, *J. Raman Spectrosc.*, 2008, **39**, 40–46.
- 24 U. Schwertmann and R. M. Cornell, *Iron Oxides in the Laboratory*, Wiley, 2008.
- 25 M. P. House, A. F. Carley, R. Echeverria-Valda and M. Bowker, *J. Phys. Chem. C*, 2008, **112**, 4333–4341.
- 26 R. Li, Q. Li, S. Gao and J. K. Shang, *J. Am. Ceram. Soc.*, 2011, **94**, 584–591.
- 27 M. Wells, R. Gilkes and R. Anand, *Clay Miner.*, 1989, **24**, 513–530.
- 28 R. Shannon, *Acta Crystallogr., Sect. A: Cryst. Phys., Diffr., Theor. Gen. Crystallogr.*, 1976, **32**, 751–767.
- 29 L. Truffault, B. Choquenot, K. Konstantinov, T. Devers, C. Couteau and L. J. M. Coiffard, *J. Nanosci. Nanotechnol.*, 2011, **11**, 2413–2420.
- 30 H. Liu, T. Chen, X. Zou, C. Qing and R. L. Frost, *J. Raman Spectrosc.*, 2013, **44**, 1609–1614.



- 31 D. L. A. de Faria, S. Venâncio Silva and M. T. de Oliveira, *J. Raman Spectrosc.*, 1997, **28**, 873–878.
- 32 M. Hanesch, *Geophys. J. Int.*, 2009, **177**, 941–948.
- 33 P. A. Redhead, *Vacuum*, 1962, **12**, 203–211.
- 34 R. L. Blake, R. E. Hessevíc, T. Zoltai and L. W. Finger, *Am. Mineral.*, 1966, **51**, 123.
- 35 A. P. V. Soares, M. F. Portela and A. Kiennemann, *Catal. Rev.: Sci. Eng.*, 2005, **47**, 125–174.
- 36 M. P. House, M. D. Shannon and M. Bowker, *Catal. Lett.*, 2008, **122**, 210–213.
- 37 W. McMaster, N. K. Del Grande, J. Mallett and J. Hubbell, *International Tables for Crystallography, Mathematical, Physical and Chemical Tables, Compilation of X-Ray cross sections*, Section III, Springer Science & Business Media, 1969.
- 38 A. M. Beale, S. D. M. Jacques, E. Sacaliuc-Parvaescu, M. G. O'Brien, P. Barnes and B. M. Weckhuysen, *Appl. Catal., A*, 2009, **363**, 143–152.
- 39 A. M. Turek, I. E. Wachs and E. DeCanio, *J. Phys. Chem.*, 1992, **96**, 5000–5007.
- 40 L. J. Burcham, L. E. Briand and I. E. Wachs, *Langmuir*, 2001, **17**, 6164–6174.
- 41 G. Busca, *Catal. Today*, 1996, **27**, 457–496.
- 42 L. J. Burcham, L. E. Briand and I. E. Wachs, *Langmuir*, 2001, **17**, 6175–6184.
- 43 M. P. House, Selective oxidation of methanol over iron molybdate catalysts, *PhD Thesis*, Cardiff University, 2007.
- 44 K. Manseri, H. Hentit, E. H. Elandaloussi, B. Benaichouba and M. S. Ouali, *Hyperfine Interact.*, 2010, **198**, 243–257.
- 45 B. Benaichouba, P. Bussiere and J. C. Vedrine, *Appl. Catal., A*, 1995, **130**, 31–45.
- 46 A. S. Chellappa and D. S. Viswanath, *Ind. Eng. Chem. Res.*, 1995, **34**, 1933–1940.
- 47 K. L. Madhok and K. P. Srivastava, *Proc. - Indian Acad. Sci., Chem. Sci.*, 1981, **90**, 527–535.

