

Hydrogel scaffolds as *in vitro* models to study fibroblast activation in wound healing and disease

Cite this: *Biomater. Sci.*, 2014, **2**, 634

Megan E. Smithmyer,^a Lisa A. Sawicki^a and April M. Kloxin^{*a,b}

Wound healing results from complex signaling between cells and their environment in response to injury. Fibroblasts residing within the extracellular matrix (ECM) of various connective tissues are critical for matrix synthesis and repair. Upon injury or chronic insult, these cells activate into wound-healing cells, called myofibroblasts, and repair the damaged tissue through enzyme and protein secretion. However, misregulation and persistence of myofibroblasts can lead to uncontrolled accumulation of matrix proteins, tissue stiffening, and ultimately disease. Extracellular cues are important regulators of fibroblast activation and have been implicated in their persistence. Hydrogel-based culture models have emerged as useful tools to examine fibroblast response to ECM cues presented during these complex processes. In this Mini-Review, we will provide an overview of these model systems, which are built upon naturally-derived or synthetic materials, and mimic relevant biophysical and biochemical properties of the native ECM with different levels of control. Additionally, we will discuss the application of these hydrogel-based systems for the examination of fibroblast function and fate, including adhesion, migration, and activation, as well as approaches for mimicking both static and temporal aspects of extracellular environments. Specifically, we will highlight hydrogels that have been used to investigate the effects of matrix rigidity, protein binding, and cytokine signaling on fibroblast activation. Last, we will describe future directions for the design of hydrogels to develop improved synthetic models that mimic the complex extracellular environment.

Received 13th December 2013,
Accepted 19th February 2014

DOI: 10.1039/c3bm60319a

www.rsc.org/biomaterialsscience

^aChemical & Biomolecular Engineering, University of Delaware, Newark, DE 19716, USA

^bMaterials Science & Engineering, University of Delaware, Newark, DE 19716, USA.
E-mail: akloxin@udel.edu

A. Introduction

Wound healing is the dynamic and multistage process of replacing injured tissue and is characterized by sequential phases of inflammation, proliferation, and remodeling.^{1–3} Upon tissue injury, clotting occurs, creating a highly-



Megan E. Smithmyer

Megan E. Smithmyer is a Ph.D. candidate in the Department of Chemical and Biomolecular Engineering at the University of Delaware. She is investigating the impact of the extracellular environment in the progression of idiopathic pulmonary fibrosis using a hydrogel *in vitro* model of the lung. She received her Bachelor of Science in Chemical and Biomolecular Engineering (*Summa Cum Laude*) and a minor in Biotechnology from North Carolina State University in 2012.



Lisa A. Sawicki

Lisa A. Sawicki is a Ph.D. candidate in the Department of Chemical and Biomolecular Engineering at the University of Delaware. She is currently studying breast cancer dormancy and recurrence using hydrogel-based materials that mimic the native extracellular matrix. She received her Bachelor of Science in Chemical Engineering (*Magna Cum Laude*) from the University of Florida in 2011.



crosslinked provisional matrix containing fibrin and fibronectin. Next, platelets, and then immune cells, secrete growth factors and cytokines, such as transforming growth factor beta 1 (TGF β 1) and platelet derived growth factor (PDGF). This initiates further wound healing processes, including the recruitment and activation of fibroblasts. Fibroblasts respond to many extracellular cues in the wound environment (Fig. 1A) and are key players in the synthesis and remodeling of the tissue, replacing the provisional matrix with granulation tissue composed of fibronectin, collagen, and various proteoglycans (e.g., hyaluronic acid and heparan sulfate), as well as contracting the wound.^{4,5} To accomplish these tasks, fibroblasts proliferate, migrate to the wound site, and activate into myfibroblasts, forming highly-organized cytoskeletons containing α -smooth muscle actin (α SMA) stress fibers to enable contraction and wound closure (Fig. 1B).⁷ The presence of organized α SMA is considered a conclusive indicator of fibroblast activation.

In healthy tissues, myfibroblasts often undergo programmed cell death (apoptosis) after a wound is healed.⁵ However, in fibrotic tissue, myfibroblast persistence leads to continued ECM deposition, causing tissue stiffening and fibrosis, and eventually loss of organ function.⁵ While the exact cause of myfibroblast persistence remains unclear, the dynamic interplay between these wound-healing cells and the local ECM has been implicated in fibrosis progression.⁷ To examine the complex processes of wound healing and fibrosis *in vitro*, hydrogels have emerged as valuable tools because they allow for the two- and three-dimensional (2D and 3D) culture of fibroblasts in defined extracellular environments with varied degrees of static and temporal property control.

Hydrogels are water-swollen crosslinked polymer networks that are often used as *in vitro* models to mimic the native ECM. Some hydrogel materials naturally present biological signals inherent to the native ECM while other materials can

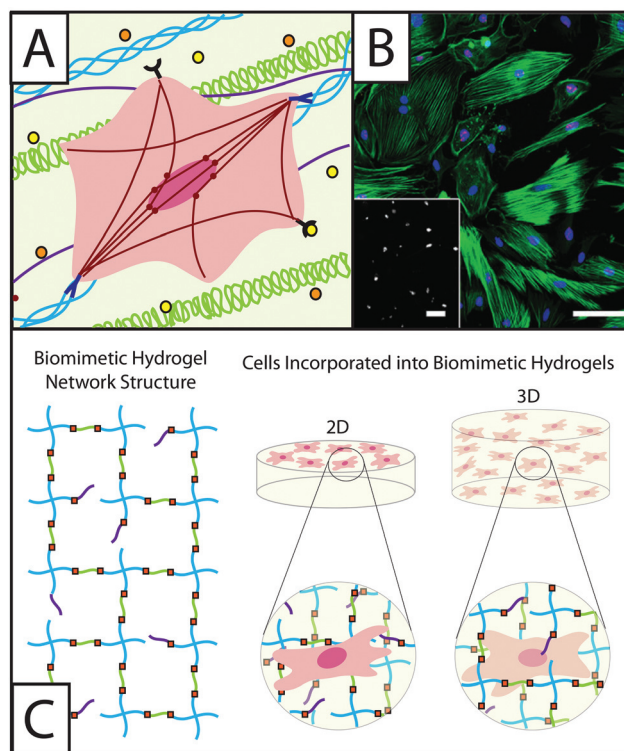


Fig. 1 Understanding the role of fibroblasts in healing and disease using hydrogel-based culture models. (A) During normal or misregulated healing in tissues throughout the body, fibroblasts are presented with a variety of signals that affect their function and activation into wound-healing cells, myfibroblasts. These extracellular cues include cytokines, such as TGF β 1 or PDGF (orange and yellow circles), that are released into the ECM by other fibroblasts, immune response cells, and epithelial cells, as well as extracellular matrix proteins, such as collagen (blue triple helix), hyaluronic acid (green), and fibronectin (purple). Interactions between fibroblasts and the temporally changing matrix lead to cytoskeletal reorganization, including expression of α -smooth muscle actin (α SMA) stress fibers (red), as well as alterations in gene expression and secretion of enzymes and proteins for matrix remodeling. The presence of organized α SMA fibers is often used to identify contractile myfibroblasts.⁵ (B) Traditionally fibroblasts (here, primary rat lung fibroblasts) have been cultured on tissue culture polystyrene, a stiff substrate known to induce activation, as shown here by cells (blue nuclei) that stain positive for α SMA (green stress fibers) and a proliferation marker (red Ki67). Adapted from reference 7. (C) Hydrogel-based culture models afford varying degrees of control of matrix biophysical and biochemical properties to understand their role in healing and disease. Here, a hydrogel with an ideal network structure is depicted with a 4-arm monomer linked by small peptides (green), which can be functionalized to be cell adhesive or proteinase degradable, as well as pendant biofunctional groups (purple). Fibroblasts have been cultured on and within hydrogel scaffolds to understand how individual or combinations of extracellular cues influence their function and fate in healing and disease.



April M. Kloxin

April M. Kloxin, Ph.D., is an Assistant Professor in Chemical & Biomolecular Engineering and Materials Science & Engineering at the University of Delaware (UD). She obtained her B.S. (Summa Cum Laude) and M.S. in Chemical Engineering from North Carolina State University and Ph.D. in Chemical Engineering from the University of Colorado, Boulder, as a NASA GSRP Fellow. She trained as a HHMI postdoctoral research associate,

joining the faculty at UD in 2011. Her group focuses on responsive biomaterials and dynamic models of disease and regeneration. Her honors include awards from the Pew Scholars in Biomedical Sciences and the NSF CAREER.

be engineered to mimic the mechanical properties (e.g., modulus) and biochemical properties (e.g., proteins and peptides) of the ECM. For the culture of fibroblasts *in vitro*, hydrogels have been formed from naturally-derived native ECM components, such as collagen, fibrin, and hyaluronic acid,⁸ or synthetic materials functionalized with bioactive moieties, such as polyacrylamide modified with whole ECM proteins⁹ or



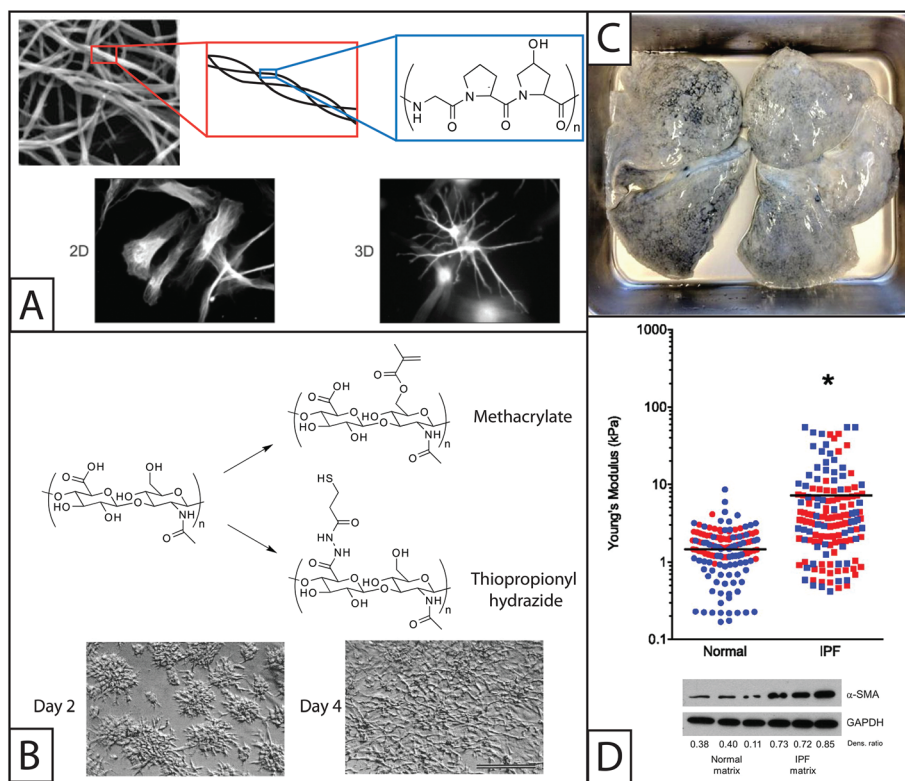


Fig. 2 Naturally derived base materials for the construction of hydrogels used in fibroblast culture. (A) Collagen I forms hydrogels through self-assembly at a physiological pH. Here, SEM was used to observe assembled collagen fibrils (top).¹⁴⁵ These fibrils are composed of triple helical polymers formed from repeating amino acids sequences, such as GPO (glycine-proline-hydroxyproline) monomer. Collagen has been widely used to coat materials like polyacrylamide for 2D fibroblast studies or as the major component in hydrogels for 3D fibroblast culture. Here, fibroblasts are shown cultured on a coated coverslip (2D) or encapsulated within the gel (3D) (bottom).¹⁴⁶ Adapted from references 145 and 146. (B) The pendant carboxylic acid groups of hyaluronic acid are typically functionalized with thiols or methacrylates for polymerization and hydrogel formation for fibroblast culture. The modulus of hyaluronic acid gels has been controlled by altering the concentration of functionalized HA or crosslinker in solution. Fibroblasts cultured on methacrylate functionalized HA hydrogels and are observed to adhere and spread over the course of 4 days (scale bar, 100 μm).⁵² Adapted from reference 52. (C) For naturally derived hydrogel scaffolds, tissues have been isolated from healthy and diseased patients and stripped of cells (decellularized), to provide a base material with appropriate mechanics, structure, and some biochemical cues for fibroblast cell culture. Here, lung tissue was isolated from a patient with idiopathic pulmonary fibrosis (IPF), decellularized, and subsequently seeded with fibroblasts for *in vitro* culture studies. Adapted from reference 15. (D) The Young's modulus (E) of normal and IPF decellularized lungs was analyzed using atomic force microscopy. The moduli of samples taken from the lungs of four individuals (two healthy and two with IPF) are shown, with each color representing a different individual. The average modulus of IPF lungs ($E \sim 16$ kPa) was significantly higher than that of normal lungs ($E \sim 2$ kPa) ($p < 0.0001$). Normal human pulmonary fibroblasts were seeded onto these decellularized normal or diseased lungs. Cells cultured on decellularized IPF lung expressed αSMA to a greater degree than cells cultured on decellularized normal lung, indicating increased cell activation into wound-healing myofibroblasts.¹⁵ Adapted from reference 15. Reprinted with permission of the American Thoracic Society. Copyright © 2014 American Thoracic Society. Cite: Booth et al. (2012) Acellular Normal and Fibrotic Human Lung Matrices as a Culture System for In Vitro Investigation. *Am J Respir Crit Care Med* **186** 866–876. Official Journal of the American Thoracic Society.

hydrogels is the result of fibroblast extension, and interaction with the gel through integrin binding. Subsequent organization of the fibroblast cytoskeleton, including αSMA stress fibers, leads to the exertion of contractile forces on the hydrogel.^{6,29,30} The organization of αSMA stress fibers can be visualized *via* immunostaining and is the most well accepted marker of myofibroblast activation. These myofibroblast behaviors are associated with the wound healing process, where contraction leads to wound closure, so overall contraction of collagen hydrogels has been used to assess the effect of potential fibrotic triggers, such as increasing matrix stiffness³¹ or protein composition,³² on myofibroblast function. For example, specific cytokines, like tumor necrosis factor α (TNF α), interleukin-1 β (IL-1 β) and interferon- γ (IFN γ) have been observed to

reduce the contraction of human fetal lung fibroblast-seeded collagen gels formed from 0.75 mg mL⁻¹ rat tail collagen I cast in 24 well tissue culture plates. Collagen hydrogel contraction was measured using an image analysis system, where the addition of any one of the three cytokines was found to inhibit hydrogel contraction ($p < 0.01$). IL-1 β had the greatest effect on hydrogel contraction. On average, hydrogels to which IL-1 β was added retained roughly 80% of their original area while control hydrogels (with no cytokines added) retained roughly 40% of their original area.^{33,34}

Collagen hydrogels also are useful for studying the effects of physical activation triggers. Fibroblasts cultured in mechanically-loaded collagen gels formed from 0.3 mg mL⁻¹ rat tail collagen I in 100 mm diameter cell culture dishes were



observed to enter an activated state while fibroblasts cultured in unloaded collagen gels enter a quiescent state.^{14,35} Here, the term ‘mechanically-loaded’ refers to hydrogels that are somehow attached to a surface, commonly a cell culture plate so that the gels resist forces exerted by fibroblasts. Alternatively, free floating gels do not resist the forces exerted by encapsulated fibroblasts cultured within them.^{14,27,28} The mechanisms by which these fibroblasts translate ‘mechanical loading’ to activation have been the subject of further study.³⁶ This phenomenon is particularly interesting given more recent results linking the differences in the stiffness of synthetic hydrogel matrices to fibroblast activation,^{16,31,37} and the observed increase in stiffness in fibrotic tissue compared to healthy tissue.¹⁵

Design considerations and potential limitations. Collagen’s native-like fibrillar structure and inherent presentation of relevant integrin binding sequences make it a useful material for mimicking the native ECM. However, care must be taken to tune the mechanical properties of collagen hydrogels. Batch-to-batch variation between different protein isolations can make it difficult to repeatedly achieve the same gel structure and mechanical properties.³⁸ Further, one cannot explicitly decouple changes in mechanical properties from changes in integrin binding. Mechanical properties can only be tuned over a limited range, from a shear modulus (G) ~ 1 to 100 Pa,³⁹ which is quite low relative to that of fibrotic tissues ($E \sim 15$ kPa), making these hydrogels less attractive for studying misregulated healing and disease.¹⁵ Collagen gels also are subject to significant degradation and remodeling by enzymes secreted by fibroblasts, including matrix metalloproteinases (e.g., MMP-2, MMP-9), making them unstable for long-term cell culture ($t > 1$ week).⁴⁰ Remodeling and contraction of collagen gels by encapsulated cells can significantly alter the mechanical properties, and therefore cell response.⁴¹ However, this dynamic interplay between cells and the matrix over shorter time scales may be appropriate and attractive for studying myofibroblasts in normal wound healing.

Fibrin

In the body. Fibrin is a large glycoprotein that plays an active role in the clotting and wound healing process. During injury, fibrinogen, the soluble fibrin precursor that circulates in the blood, is cleaved by thrombin as part of a cascade of enzymatic reactions. The result is insoluble fibrin that assembles into branched fibrils to form a hydrogel structure. This process promotes blood clotting. In normal wound healing, fibroblasts migrate into the provisional matrix of the fibrin clot and deposit ECM to rebuild tissue. Fibrin binds other ECM proteins, including fibronectin and a number of cytokines, and provides cell adhesion sites, such as RGD, for activation of integrins on the fibroblast cell surface.⁴²

In hydrogels. Generally, fibrin hydrogels are formed by the addition of thrombin to a suspension of cells in a fibrinogen mixture. Similar to blood clotting, thrombin promotes the cleavage of fibrinogen to fibrin, which self-assembles into a hydrogel. There is some evidence to suggest that the ratio of fibrinogen to thrombin affects fibroblast behavior, specifically

proliferation and migration, where fibroblast proliferation was observed to be greater in hydrogels containing less fibrinogen (5–17 mg mL⁻¹ as opposed to 34–50 mg mL⁻¹). Increased proliferation and migration are important characteristics of fibroblasts during the wound healing process, which suggests that fibrin gel composition could play a role in fibroblast activation, although more definitive studies are required.⁴³

Traditionally, fibrin has been a popular material for tissue engineering and regenerative medicine applications. It has been used in approaches aimed at regenerating a number of tissues *in vitro*, or to mimicking tissues in biological implants⁴⁴ and in wound healing applications. Fibrin also has been used as a sealant for open wounds,⁴⁴ to deliver proteins such as thrombin or cytokines associated with wound healing,⁴⁵ or cells like fibroblasts or cardiomyocytes^{46,47} to promote the wound healing process. This wide range of healing-related applications has motivated additional studies on fibroblast culture in hydrogels. Fibroblast migration to fibrin clots is a critical step in the wound healing process and for this reason fibrin clots are sometimes included within *in vitro* models. These models have been used to understand what drives migration and to elucidate the causes of improper wound healing. Fibronectin and PDGF play a role in fibroblast migration to fibrin clots in collagen hydrogels.⁴⁸ Further, plasminogen expression aids in fibroblast invasion of fibrin, but may not be essential. Evidence suggests that the expression of other proteinases can overcome plasminogen deficiency.⁴⁹

Design considerations and potential limitations. Fibrin’s critical role in the wound healing process has led to its use in many *in vitro* models to examine fibroblast function in healing. However, fibrin hydrogels have some limitations in this application. For example, fibrin is highly susceptible to enzymatic cleavage, so fibrin hydrogels must often be treated with a protease inhibitor to delay complete degradation⁵⁰ and allow for long term *in vitro* culture (>2 days). Furthermore, commercially available fibrinogen often contains cytokines that can introduce undefined and uncontrolled biological cues into the hydrogel model, making it difficult to isolate the effect of individual matrix properties on fibroblast migration or activation.⁴⁴

Hyaluronic acid

In the body. Hyaluronic acid (HA) is a glycosaminoglycan that is found in the ECM of most tissues (Fig. 2B). The structure of HA consists of two repeat units: D-glucuronic acid and N-acetyl-D-glucosamine.⁵¹ The degradation and synthesis of HA is an essential part of the regular maintenance of the ECM and may be critical for appropriate wound healing.⁵¹ HA binds a number of ECM proteins, including fibronectin,⁵² as well as cell surface receptors, including CD44.⁵² Low molecular weight HA fragments are associated with inflammatory response in the lung, and it has been hypothesized that improper HA clearance is a contributing factor in interstitial lung diseases, such as pulmonary fibrosis.⁵¹

In hydrogels. In the native ECM, HA interacts with proteins like collagen and fibronectin to create a complex multicomponent environment. Recent work has aimed to mimic this



native multicomponent structure by incorporating HA within collagen hydrogels.^{53,54} The addition of HA alters the viscoelastic properties of collagen gels, but does not appear to affect the microstructure.⁵³ Reports on the effect of HA addition on fibroblast activation, proliferation, or cytoskeletal organization are somewhat varied, from reports of HA having no effect on fibroblast behavior to reports of HA increasing myofibroblast activity.^{32,53,55} While it is generally accepted that HA contributes to wound healing *via* cell surface interactions and related signaling, it remains unclear whether or not HA affects wound healing or fibrosis *via* physical interactions.^{51,53}

HA also has been modified with various reactive functional groups to allow formation of covalently crosslinked hydrogels.^{56,57} Synthetically modified HA enables the formation of hydrogels with controllable modulus⁵⁸ and the potential for *in situ* photopatterning,⁵⁹ affording control of matrix properties in space and in time. For example, HA has been modified with thiol groups by reaction with dithiobis(propanoic dihydrazide) or dithiobis(butyric dihydrazide) followed by reduction with dithiothreitol.⁶⁰ This method has been used to modify up to 70% of the available carboxylic acid groups with thiols that then participate in a number of reactions to form hydrogels, including a Michael-type addition reaction with acrylates or a free-radical initiated chain polymerization with acrylates or methacrylates.^{58,61} As an alternative to the addition of thiol groups, HA has been reacted with methacrylic anhydride under basic conditions (pH ~ 8) to add methacrylate groups. These free radical chain polymerization reactions enable gel formation and modification upon application of cytocompatible doses of long wavelength UV light in the presence of a photoinitiator.^{38,52} HA gels have been used to culture a number of fibroblast cell lines including human dermal fibroblasts,⁶² vocal fold fibroblasts,³² and valvular interstitial cells (VICs).⁶³ For example, elastin synthesis by vocal fold fibroblasts was found to be inversely related to the molecular weight of HA included in HA-polyacrylamide gels.³²

Design considerations and potential limitations. HA hydrogels are useful tools because they mimic aspects of the structure and chemistry of the native ECM. However, appropriate cell interactions are not guaranteed. For example, VICs have been observed to adhere to pure HA hydrogels,⁵² but adult dermal fibroblasts require the addition of adhesive proteins like fibronectin to adhere.⁶² The inclusion of other proteins can make the structure of HA hydrogels more complex and less well-defined, and, like other natural materials, HA must be purified before being used for *in vitro* cell culture. Furthermore, the effect of HA addition on fibroblast function within *in vitro* models remains unclear. Future studies with these gel-based *in vitro* model systems may help identify the specific role of HA natively during wound healing.

Other natural materials

Many additional components of the ECM offer favorable hydrogel properties for fibroblast *in vitro* culture beyond the more commonly used scaffold materials that have been described in detail. For example, the protein elastin lends the

native ECM much of its elasticity. While native elastin is highly crosslinked and can be difficult to handle *in vitro*, recombinantly expressed elastin and electrospun elastin have been used to form hydrogels and could be promising for fibroblast culture.^{64,65} Similarly, elastin-like polypeptides have been used to form hydrogels for the culture of fibroblasts, although specific investigations of wound healing related properties are currently limited.⁶⁶

Decellularized tissue is another interesting material that has been recently used to culture fibroblasts. Decellularized tissue consists of tissue samples that have been stripped of cells such that only extracellular matrix components remain, including structural proteins, glycosaminoglycans, and cytokines. While perhaps not traditionally considered a hydrogel, these complex crosslinked protein scaffolds closely resemble the native ECM experienced by fibroblasts *in vivo*. Characterizing the mechanical properties and protein composition of normal and fibrotic decellularized tissues has been a helpful step toward identifying pro-fibrotic signals. In particular, decellularized fibrotic lungs were found to have a significantly higher modulus than decellularized healthy lungs ($E \sim 15$ kPa *vs.* 3 kPa, respectively), and human pulmonary fibroblasts reseeded on these fibrotic matrices showed an increase in α SMA expression as compared to cells seeded on normal lungs (Fig. 2D).¹⁵ This result supports the hypothesis that signals from the extracellular environment, especially changes in the structure and concentrations of ECM proteins, promote activation of fibroblasts and significantly contribute to fibrosis. While these are informative studies, decellularized tissue can be difficult to obtain, purify, and characterize, limiting its broad use as a culture model.

Polyacrylamide

In hydrogels. Polyacrylamide hydrogels have been a popular material for *in vitro* cell culture in two dimensions for a number of reasons: they provide a biologically neutral (bioinert) base for the controlled presentation of added biochemical cues, are formed from commercially available monomers, and allow straightforward control of mechanical properties by controlling crosslinker concentration.⁶⁷ In particular, a large portion of the *in vitro* studies related to fibroblasts have been conducted on polyacrylamide coated with collagen I,^{16,31} where the effects of matrix rigidity or stiffness on fibroblast morphology and activation have been examined.^{2,45}

Polyacrylamide gels with stiffness gradients, typically achieved by varying crosslink density and modulus, have been particularly useful for assessing the effects of matrix stiffness on fibroblast activation.^{16,69} Notably, a polyacrylamide gel with a gradient in stiffness and coated with collagen I was used to examine the effect of matrix rigidity on the activation of human pulmonary fibroblasts. Human pulmonary fibroblasts proliferated to a greater extent on the stiffer portion of the gradient (Fig. 3A). Additionally, on discrete stiffness gels, little to no procollagen I and low levels of α SMA expression were observed on lower stiffness materials (Young's modulus $E < 0.5$ kPa), while greater levels of procollagen I and α SMA



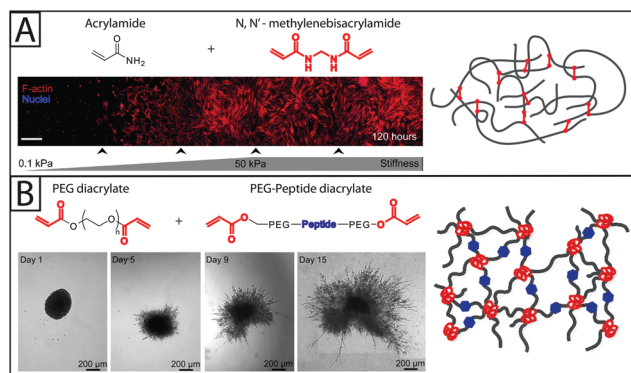


Fig. 3 Synthetic base materials for the construction of hydrogels used in fibroblast culture. (A) Polyacrylamide hydrogels (right) are commonly formed from acrylamide and *N,N'*-methylenebisacrylamide and often used in 2D fibroblast culture. For example, human pulmonary fibroblasts (left) have been observed to proliferate on a collagen-coated polyacrylamide substrate with a stiffness gradient. As the modulus of the polyacrylamide substrate increased, fibroblasts proliferated to a greater degree and had highly organized cytoskeletons (red f-actin).¹⁶ Adapted from references 16 and 147. (B) Polyethylene glycol (PEG) has been used in 2D and 3D fibroblast culture. PEG hydrogels, like the one shown on the right, can be formed by functionalizing PEG with acrylate end groups and then polymerizing with an acrylate-functionalized peptide.¹⁴⁷ Proteinase-degradable peptides often have been used in PEG hydrogels for 3D cell culture because they allow the matrix to be degraded and invaded by the encapsulated fibroblasts. Here, 3T3 fibroblasts are observed spreading in degradable PEGDA hydrogel containing basic fibroblast growth factor (bFGF) (time lapse images). bFGF was found to induce cell spreading within the gel over the course of 15 days.⁸¹ Adapted from references 81 and 147.

expression were observed on high stiffness materials ($E > 10$ kPa).¹⁶ This is one of several studies utilizing polyacrylamide^{37,70} that indicates that the mechanics of the extracellular environment play a significant role in fibroblast activation, furthering our understanding of the complex signals that contribute to fibrosis and wound healing.

Design considerations and potential limitations. While polyacrylamide is a versatile 2D culture substrate, it does not inherently present biological cues, requiring the addition of cell adhesive peptide sequences to terminal acrylate groups or whole proteins using a heterobifunctional crosslinker (Section C).⁶⁷ This modification allows tuning of cell interactions, but may not appropriately recapitulate the biochemical milieu presented by the native ECM. Another major disadvantage of polyacrylamide is its cytotoxicity. While this is not a concern for 2D culture models where cells are seeded on top of polyacrylamide gels, it makes 3D cell culture unrealizable. Cells cannot be encapsulated in polyacrylamide gels nor can they penetrate the gels. However, polyacrylamide gels have been utilized to a limited extent for two layer hydrogel studies, often called 2.5-dimensional (2.5D) culture. Fibroblasts were sandwiched between two layers of polyacrylamide, providing a limited focal plane for imaging cell response and allowing cells to adopt a morphology that closely resembles their morphology in native tissue.⁷¹ More information about the mechanics of 2.5D hydrogel studies will be provided in Section D.

Poly(ethylene glycol)

In hydrogels. Initially bioinert, PEG is easily functionalized for controlled gel formation and modification. PEG provides a blank slate for the presentation of specific biophysical and biochemical cues present in the wound healing environment.⁷² The modulus of PEG hydrogels can be tuned over a broad range to mimic the moduli of a healthy and fibrotic soft tissues (e.g., $E \sim 5$ kPa to $E \sim 900$ kPa),^{17,18,73} and whole proteins or peptides have been added to mimic the chemical composition of the ECM in those tissues (e.g., hyaluronic acid, fibronectin, and protein mimetic peptides RGD and DGEA have all been conjugated to PEG hydrogels).^{17,32,62} For hydrogel formation, the hydroxyl end groups of PEG, either linear or multi-arm, have been modified with a number of reactive functionalities, including acrylates, methacrylates, and various 'click' groups.^{18,74} Within *in vitro* model systems to study fibroblast function and fate, PEG diacrylate or dimethacrylate based gels have been formed from free radical chain growth polymerization, enabling spatiotemporal control of gel formation in the presence of light and a photoinitiator. These matrices degrade very slowly in aqueous solution unless cleavable groups are introduced in addition to the monomers (e.g., poly(lactic acid) or enzymatically cleavable peptide blocks)⁷⁵ and, consequently, these matrices have been used primarily for 2D healing or disease models.^{17,18} A variety of 'click' chemistries also have been used in conjunction with functionalized multi-arm PEG monomers and enzymatically-degradable peptides decorated with cysteines to create cell-degradable hydrogels by a step growth mechanism, including the reaction of thiols with vinyl sulfones^{25,76} by Michael-type addition or norbornenes by radically-mediated thiol-ene click chemistry.⁷⁷ Step growth hydrogels have been shown to have a more homogenous network structure with improved mechanical properties.⁷⁸

PEG hydrogels have been used to culture several types of fibroblasts, including VICs,¹⁸ human foreskin fibroblasts (HFF),^{76,79} and pulmonary fibroblasts.¹⁷ These hydrogels have been used to study the effects of matrix stiffness,^{17,74,77,80} cell adhesion sites,⁷⁷ and growth factor presentation^{75,81} on fibroblast adhesion and activation. For example, PEG hydrogels have been used to study the individual and synergistic effects of matrix modulus and TGF β 1 on fibroblast activation. It has been observed that pulmonary fibroblasts cultured on lower modulus PEG hydrogels ($E \sim 20$ kPa) do not express α SMA fibers when TGF β 1 is introduced, even at concentrations as high as 100 ng mL⁻¹. On more rigid substrates ($E \sim 900$ kPa), α SMA expression can be induced through the addition of TGF β 1, but higher concentrations are needed on less rigid substrates.¹⁷ The conclusion of this study, that low modulus substrate can inhibit α SMA expression, is supported by a number of studies.^{77,82}

In another investigation into the effect of matrix stiffness, PEG hydrogels were used to study fibroblast activation in response to dynamic changes in substrate modulus during culture. Changes in gene expression, proliferation, and



expression of α SMA have been observed in VICs grown on photodegradable PEG substrates where modulus was decreased after three days of culture. These changes suggest that, on the time scale observed (5 total days of culture), decreases in modulus from that of fibrotic tissue ($E \sim 32$ kPa) to that of healthy tissue ($E \sim 7$ kPa) led to fibroblast de-activation and quiescence,^{18,74} indicating that matrix modulus alone can alter fibroblast fate over relatively short times. Additionally, growth factors like FGF-1 have been shown to increase fibroblast invasion into PEG hydrogels (Fig. 3B)⁸¹ of varying moduli.

Design considerations and potential limitations. PEG hydrogels are versatile models that can be used in combination with a variety of chemistries, enabling the probing of fibroblast response to initial and temporal differences in specific mechanical and biochemical matrix cues. However, for 3D culture, the synthesis of PEG hydrogels is more complex than many of the self-assembling natural materials. PEG hydrogels also must be engineered to present biological cues like proteins or protein mimetic peptides and to be enzymatically degradable if they are to be used for 3D cell culture; this is in contrast to synthetically modified HA hydrogels, which can afford spatiotemporal property control, cell adhesion, and some degradability without significant alteration.⁸³ Finally, the methods used to initiate PEG hydrogel formation must be carefully selected to avoid cytotoxicity or long-term damage to cells (e.g., free radicals or significant doses of UV light).⁷²

Other synthetic materials

Polyacrylamide and PEG are the most commonly used synthetic hydrogel scaffold materials for *in vitro* studies of healing and disease. However, there are many other synthetic materials that have been used to form hydrogels for general cell culture. For an excellent review of materials for hydrogel formation and their properties see Slaughter *et al.*¹⁰ Briefly, fibroblasts have been successfully cultured on poly(vinyl alcohol) (PVA), which offers many of the benefits of PEG hydrogels, but is difficult to control, on the microscale.^{84,85} Poly(2-hydroxyethyl methacrylate) (PHEMA) historically has been used in biological implants¹⁰ and with limited success to culture fibroblasts *in vitro*.⁸⁶ Additionally, poly(dimethyl siloxane) (PDMS), which can be used to form polymer networks with soft tissue-like moduli, has been applied in fibroblast culture to study cell contraction. Wrinkling of the PDMS substrate has been correlated to the contraction force that the fibroblast or myofibroblast exerts on its environment, where cells cultured on stiff surfaces ($E \sim 100$ kPa) exhibit enhanced wrinkle formation, indicating greater cell contraction and pro-fibrotic behavior.⁷

C. Biological functionalization of hydrogels for fibroblast culture

The bioinert nature of synthetic hydrogels allows user control over the addition of various biochemical ECM cues to enable the examination of their effects on fibroblast proliferation,

migration, and activation in 2D and 3D culture and to facilitate appropriate cell adhesion. In this section, materials that are commonly incorporated into hydrogel models of wound healing or fibrosis for the purpose of biological functionalization are overviewed, including whole ECM proteins, protein functional domains, protein mimetic peptides, and growth factors. This section also will discuss common methods for bioconjugation of the hydrogel base materials discussed in Section B.

Whole ECM proteins and protein functional domains

Fibronectin. Fibronectin is a V-shaped ECM protein composed of modular domains known to bind important ECM components involved in fibroblast function, including collagen, heparan sulfate, fibrin,²⁴ and hyaluronic acid.⁶² Fibronectin and its derivatives also promote the adhesion of fibroblasts,^{52,62} as well as other cell types.⁸⁷ Increases in adhesion, spreading, and proliferation of human dermal fibroblasts on hyaluronic acid gels have been correlated with the incorporation of increasing concentrations of fibronectin functional domains.⁶² Similarly, fibroblast adhesion and proliferation has been observed on fibronectin-coated polyacrylamide gels⁸⁸ and gelatin.⁸⁹ Additionally, VICs have been observed to proliferate to a greater degree on tissue culture-treated polystyrene (TCPS) coated with fibronectin as compared to laminin or collagen I.⁵²

In addition to promoting cell adhesion, the Extra Type III A (EDA) domain of fibronectin has been implicated in fibroblast activation to myofibroblasts.^{89,90} Primary lung fibroblasts isolated from patients with idiopathic pulmonary fibrosis (IPF) express EDA at a higher concentration (as observed by RT PCR and western blotting) than primary lung fibroblasts isolated from healthy patients.⁹⁰ Further, bleomycin treated mice, a common *in vivo* pulmonary fibrosis model, do not develop fibrosis when they are EDA deficient.⁹⁰ Dermal fibroblasts cultured on gelatin expressed lower levels of α SMA when treated with an anti-EDA antibody and TGF β 1, which is known to activate fibroblasts, when compared to a control fibroblasts cultured without the antibody.⁸⁹ These results suggest that, while fibronectin is often included in hydrogel *in vitro* models to promote cell adhesion, fibronectin also contributes to TGF β 1-induced fibroblast activation.

Laminin. Laminin is a cross-shaped ECM protein ubiquitous throughout the basement membrane, a layer of proteins that support epithelial cell growth and provide a molecular barrier between organ tissue and capillaries or organ compartments.⁹¹ Laminin binds itself as well as other common basement membrane proteins, including collagen IV.^{24,91} Basement membrane disruption often occurs with tissue injury and is commonly observed in fibrotic organs,⁴ and consequently, laminin is an important component to consider in the design of relevant culture models. TCPS and glass coverslips coated with laminin enable adhesion of both human embryonic skin fibroblasts and VICs.^{52,92} However, in several fibroblast cell lines, laminin has been shown to promote adhesion to a lesser degree than fibronectin.^{52,93,94} Ultimately,



cell adhesion is determined by the integrin profile of the cell and may vary from cell line to cell line. Laminin also may affect fibroblast protein expression. For example, the $\alpha 3$ chain of laminin has been observed to promote MMP-1 expression in human neonatal dermal fibroblasts which is critical in tissue remodeling during wound healing.⁹⁵ While the effect of laminin on fibroblast activation is not well described in the literature, a peptide derived from laminin has been shown to increase collagen synthesis in fibroblasts, as will be discussed later in this section.

Heparin. Heparan sulfate is a structurally variable, highly charged linear polysaccharide in the ECM that participates in protein and growth factor binding.⁹⁶ Due to difficulties in the isolation of heparan sulfate, heparin is often used to represent heparan sulfate within *in vitro* models.⁹⁷ Some studies have shown that heparin displays antifibrotic properties, although these properties may be tissue specific. For example, injections of low molecular weight heparin (LMWH) and PEG-conjugated low molecular weight heparin reduced liver fibrosis in rats treated with dimethylnitrosamine (DMN). Liver samples from these rats showed decreases in mRNA and protein expression of α SMA, collagen I, and other profibrotic proteins, as assessed by RT PCR and western blotting.⁹⁸ However, heparin has also been shown to increase α SMA expression, as assessed by fluorophore-linked immunosorbence assay quantification, of VICs cultured on heparin-coated TCPS by over 200% compared to an uncoated TCPS when cells were cultured with TGF β 1.⁹⁹ Additionally, soluble heparin has been shown to increase α SMA expression in VICs in a dose dependent manner.¹⁰⁰ Thus, the effect of heparin on fibroblasts may be highly dependent on the presence of particular growth factors. Heparin is known to bind and stabilize basic fibroblast growth factor (bFGF), vascular endothelial growth factor (VEGF), PDGF, TGF β 1, and others.⁹⁶

Growth factor sequestration may explain heparin's observed antifibrotic effects *in vivo*, and its simultaneous ability to stimulate fibroblast activation *in vitro*. Similarly, heparin growth factor sequestration affects fibroblast adhesion onto hydrogel scaffolds containing heparin. Human aortic adventitial fibroblasts adhered at higher rates to hydrogels formed from PEG conjugated with RGD peptides than the same base hydrogel formed with LMWH (Fig. 4A).⁹⁴ This result indicates that LMWH had an adverse effect on cell adhesion. However, this adverse effect was counteracted by the addition of bFGF.⁹⁴

Conjugation methods. Various methods have been used to incorporate whole ECM components into hydrogels. Laminin and fibronectin have been incorporated into collagen IV and I hydrogels without modification, at concentrations between 10 μ g mL⁻¹ and 100 μ g mL⁻¹, due to their natural binding affinities.⁹³ To allow the modification of synthetic materials with whole proteins, appropriate chemical functionalization is required. Whole proteins have been treated with *N*-sulfo succinimidyl-6-(4'-azido-2'-nitrophenylamino) hexanoate (sulfo-SANPAH), a heterobifunctional reagent that provides a *N*-hydroxysuccinimide ester that reacts with a primary amine on



Fig. 4 Approaches to biological functionalization of hydrogel culture systems. (A) Heparan sulfate is found throughout the ECM and is known to be an important mediator of cytokine binding and presentation; to mimic this, heparin has been incorporated within hydrogel-based culture systems for the purpose of biological functionalization. For example, four-arm PEG has been functionalized with an RGD adhesive peptide sequence (PEG(RGD)) or fibronectin (PEG(FN)) and crosslinked with low molecular weight heparin (LMWH) or LMWH functionalized with RGD (LMWH(RGD)). Hydrogels were formed from these materials using thiol-maleimide click chemistry (top). The resulting hydrogels were used to culture fibroblasts, where fibroblasts were observed to spread preferentially on hydrogels containing fibronectin, as determined by immunostaining for f-actin (green). The addition of LMWH to PEG (RGD) gels also increased fibroblast spreading, but the addition of LMWH(RGD) did not, indicating that the process of conjugating RGD to LMWH may have inhibited protein function.⁹⁴ Adapted from reference 94. (B) Cytokines and growth factors are secreted by resident cells, as well as recruited immune cells, during healing. To capture this within model systems, these soluble proteins have been added to the culture medium or functionalized to the scaffold. Here, rat subcutaneous fibroblasts (green f-actin) were cultured on collagen lattices (inset A) and TGF β 1 was added (inset B), significantly increasing the number of activated cells (red α SMA).⁶ Adapted from reference 6.

the protein and a nitrophenyl azide group that reacts with an amide on the gel surface upon exposure to UV light.^{16,31,70} This method often has been used to conjugate whole proteins to polyacrylamide gels. Fibronectin domains have been conjugated to PEG by adding a cysteine tag and then reacting the free thiol with acrylate-functionalized PEG.⁶² Fibronectin also has been biotinylated for conjugation to streptavidin-functionalized PEG gels⁸⁷ and polyacrylamide gels.⁸⁸ Heparin has been conjugated to PEG hydrogels by functionalizing the polysaccharide with a maleimide group that is reacted with thiol-functionalized PEG monomer.⁹⁴ These protocols are not protein specific, however, and could be applied to any number of whole ECM proteins for biological functionalization of hydrogel scaffolds. For additional information on bioconjugation approaches, in-depth reviews can be found by Slaughter *et al.*¹⁰ and Kharkar *et al.*⁷²



Protein mimetic peptides

Synthesis and function. Protein mimetic peptides are short sequences of amino acids derived from the functional sites of whole ECM proteins and have become popular replacements for whole proteins in hydrogel scaffolds. Integrin binding protein mimetic peptides are generally more stable than whole proteins, which may be degraded by fibroblasts.⁴ They also offer the advantage of tight control over the concentration of available cell interaction sequences since they mimic only a portion of the entire protein.⁷⁷ However, the simplicity of protein mimetic peptides can lead to the exclusion of beneficial sequences and reduced functionality. For example, adult human dermal fibroblasts adhere to HA-PEG-fibronectin hydrogels to a much greater degree than HA-PEG-RGD hydrogels.⁶²

Protein mimetic peptides can be synthetically produced and modified with various functional chemistries, allowing for the construction of well-defined and highly controlled biomimetic hydrogels. Specifically, peptides have been synthesized to contain terminal thiol groups that are then reacted with 'ene'-functionalized PEG monomers.^{17,77} Peptides also have been functionalized with acrylate groups for reaction with acrylate functionalized PEG¹⁰¹ as well as acrylamide. As will be discussed below, protein mimetic peptides are most often incorporated into synthetic hydrogel systems to enable appropriate fibroblast adhesion, although they also can be used to elicit specific cellular responses, including activation. Protein mimetic peptides allow the isolation of integrin binding from the other functions of whole proteins, such as growth factor sequestration, and enabling the testing of hypotheses concerning integrin binding without the addition of confounding factors.¹⁷

Common sequences. Peptide sequences that are commonly incorporated into hydrogel scaffolds for fibroblast culture are listed in Table 1 along with the proteins they mimic, integrins they target, and their observed effects on fibroblast behavior. The RGD sequence is probably the most ubiquitous in fibroblast cell culture. It has been shown to promote fibroblast adhesion to biologically inert substrates, including PEG,¹⁷ PVA,¹⁰² and PDMS.¹⁰³ RGD was able to stimulate human pulmonary fibroblast adherence at lower concentrations than DGEA (aspartic acid-glycine-glutamic acid-alanine) or VGVAPG (valine-glycine-valine-alanine-proline-glycine) in 0.5 to 1 MPa hydrogels.¹⁷ While RGD was initially derived from fibronectin, it is present in many ECM proteins and has been found to most strongly bind the $\alpha_v\beta_3$ integrin primarily associated with vitronectin; inclusion of the synergistic sequence PHSRN with RGD promotes activation the $\alpha_5\beta_1$ integrin primarily associated with fibronectin.¹⁰⁴ The degree to which RGD promotes adhesion varies among fibroblast cell types. For example, almost 100% of adult human dermal fibroblasts adopt a rounded morphology on HA-PEG-RGD hydrogels, whereas roughly 50% of VICs appear to adopt a spreading morphology on PEG gels with relatively low concentrations (1 pmol cm⁻²) of RGD peptide.^{62,101}

In addition to promoting cell adhesion, some protein mimetic peptides have been observed to affect fibroblast behavior. For example, RGD was found to increase collagen synthesis in human skin fibroblasts cultured on PDMS, a function associated with activated fibroblasts during wound healing.¹⁰⁵ Similarly, the sequence YIGSR (tyrosine-isoleucine-glycine-serine-arginine) which is derived from laminin has been shown to promote collagen synthesis in human dermal fibroblasts.¹⁰⁶ In another example, VAPG (valine-alanine-proline-glycine), a peptide derived from elastin, was found to enhance

Table 1 Protein mimetic peptides and their function

Sequence	Mimicked protein	Associated integrin	Cell line	Observed cell response	Reference
RGD	Fibronectin, Collagen I, Laminin α_1 , Vitronectin	$\alpha_v\beta_3$ ^a 104,137–139	Human pulmonary fibroblast	Adhesion	17
			Human skin fibroblast	Collagen I synthesis	105
			VIC	Adhesion	77
			Human periodontal ligament fibroblast	Adhesion	140
GFOGER-(POG) _n	Collagen I	$\alpha_2\beta_1$, $\alpha_1\beta_1$ 23,142	Human dermal fibroblast	Collagen I synthesis	141
DGEA	Collagen I	$\alpha_2\beta_1$, $\alpha_3\beta_1$ 143	Human pulmonary fibroblast	Adhesion	17 143
YIGSR	Laminin β_1	$\alpha_3\beta_1$, $\alpha_4\beta_1$, $\alpha_6\beta_1$ 144	Human periodontal ligament fibroblast	Adhesion	106
			Human dermal fibroblast	Adhesion	140
IKVAV	Laminin α_1	$\alpha_3\beta_1$, $\alpha_4\beta_1$, $\alpha_6\beta_1$ 144	Human pulmonary fibroblast	Adhesion	17
			Human periodontal ligament fibroblast	Adhesion	140
PHSRN(SG) ₃ RGDSP	Fibronectin	$\alpha_5\beta_1$ 104,138	3T3 fibroblasts	Adhesion	
P15	Collagen I	$\alpha_2\beta_1$ 73	VIC	α SMA expression	77 73
VGVAPG	Elastin	affinity binding protein 73	VIC	α SMA expression	77

^a Most strongly bound amongst several integrins, which include $\alpha_5\beta_1$, $\alpha_8\beta_1$, $\alpha_v\beta_1$, $\alpha_v\beta_5$, $\alpha_v\beta_6$, & $\alpha_v\beta_8$.



expression of α SMA by VICs cultured on PEG hydrogels, indicating increased activation.⁷⁷

Cytokines

In the body. Cytokines and growth factors are small proteins (typically on the order of 10 kDa) that act as signaling molecules. During wound healing, cytokines are released by epithelial cells, inflammatory cells, and fibroblasts, resulting in phenotypic changes in those cells and cell migration to the site of wound healing.⁵ Several cytokines have been shown to affect fibroblast activation, including TGF β 1, connective tissue growth factor (CTGF), PDGF, Fizz1, and tumor necrosis factor alpha 1 (TNF α 1).^{5,107} Of these, TGF β 1 is the most well studied. TGF β 1 is secreted by a number of cells at the site of wound healing and acts through the SMAD signaling pathway to induce the expression of α SMA stress fibers in fibroblasts, resulting in a contractile, myofibroblastic phenotype.⁵ TGF β 1 is often included within *in vitro* studies as a positive control for cell activation and has been shown to induce α SMA stress fiber formation on TCPS,¹⁰⁸ collagen hydrogels (Fig. 4B),¹⁴ polyacrylamide coated with collagen,¹⁶ and PEG hydrogels modified with RGD adhesive peptide.¹⁷ Cytokines like TGF β 1 are most commonly included within *in vitro* models *via* addition to cell culture media at concentrations ranging from 1 ng mL⁻¹ (ref. 17) to 100 ng mL⁻¹ (ref. 17, 108). Other cytokines, including IL-1 β and bFGF,^{109,110} have been observed to down regulate the expression of α SMA in fibroblasts. The effects of these cytokines have not been widely studied in hydrogel models, although their effects have been documented in 2D *in vitro* studies on TCPS¹⁰⁹ and within *in vivo* studies.¹¹⁰

In hydrogels. While cytokines are most often introduced to *in vitro* models through cell culture media, some work has been done to immobilize cytokines within hydrogels to elicit a specific cellular response, such as fibroblast migration, which is associated with an activated fibroblast phenotype in wound healing.^{75,81} For example, epidermal growth factor (EGF) modified with an acrylate group using NHS chemistry was immobilized within enzymatically-degradable, cell-adhesive PEG hydrogels and shown to increase the migration of human dermal fibroblasts by roughly twenty percent as compared to a control hydrogel.⁷⁵ A similar chemistry was used to conjugate TGF β 1 to PEG hydrogels and increased ECM synthesis in smooth muscle cells, which share many commonalities with fibroblasts.¹¹¹ Additionally, the cytokine sequestering properties of heparin have been utilized in hydrogels for cell culture, although these gels are more often used to culture stem cells or endothelial cells.^{112,113}

D. Increasing dimensionality towards a better understanding of activation

Designing materials that closely mimic the native ECM, from its 3D structure to dynamic nature, is critical in the development of hydrogel models to understand wound healing and disease. The move from hard plastic culture dishes to

hydrogels has already advanced the study of wound healing and disease by revealing how matrix modulus plays a role in fibroblast activation. The move from 2D models to 3D models is allowing researchers to investigate how polarization and cell shape may influence fibroblast behavior *in vitro* and *in vivo*. The development of temporally changing models is also improving our understanding of the role of dynamic signaling in the wound healing process and the development of fibrosis. This section will discuss the exciting discoveries that have resulted from creating models with increased dimensionality starting with the use of models with varied stiffness and ending with temporal signaling.

2D: the move to biomimetic surfaces

'Stiff' or high modulus substrates have been observed to induce the expression of α SMA in a number of different cell-matrix systems: these include human lung fibroblasts and rat hepatic fibroblasts cultured on polyacrylamide coated with collagen I^{16,31,70} and PEG hydrogels modified with RGD, DGEA, and IKVAV peptides,¹⁷ as well as VICs cultured on PEG hydrogels modified with fibronectin²⁰ or RGDS, VGVAPG or P15.⁷³ For example, rat portal (hepatic) fibroblasts cultured on discrete stiffness gels ranging from $E \sim 400$ Pa to 12 000 Pa exhibit increasing α SMA stress fiber expression with increasing stiffness (Fig. 5A). This result was quantified on the transcriptional level using RT-PCR.⁷⁰ Additionally, work done in collagen hydrogels suggests that ECM protein secretion is higher when gels are 'mechanically-loaded',²⁸ suggesting that fibroblast activation is influenced by matrix resistance to fibroblast contractile forces. Further, fibroblasts that have been cultured on stiff substrates for various periods of time express high levels α SMA when cultured on soft substrates compared to cells that were never cultured on a stiff substrate, indicating an important temporal component in cell response to matrix mechanical properties where cells have an increasing 'memory' of activation over time.⁷

ECM topography also has been observed to affect activation. In one study, PEG microrods were patterned on a 2D PEG-coated silicon wafer, allowing fibroblasts to attach and align along the rods without adhesive ligands. Microrods of varied moduli down-regulated expression of α SMA, cyclin D1, and integrin α 3, and decreased proliferation, indicating that topography plays a role in fibroblast activation.¹¹⁴ Additionally, studies examining the combined effects of matrix rigidity and patterning of ECM proteins on fibroblast adhesion and organization have been performed to create better mimics of the *in vivo* microenvironment. For example, PDMS micropost arrays coated with ECM proteins were created for 2D culture.¹¹⁵ Fibroblasts seeded on top of the patterned surface exerted forces on the posts and spread over the surface of the material. The formation of focal adhesions on micropost arrays and flat surfaces varied depending on both the substrate stiffness (where shorter posts correspond to a more rigid substrate) and ECM protein pattern. Fibroblasts cultured on uniform ECM-coated flat surfaces exhibited the most spreading. The rigidity of the substrate and the patterning of the posts also affected



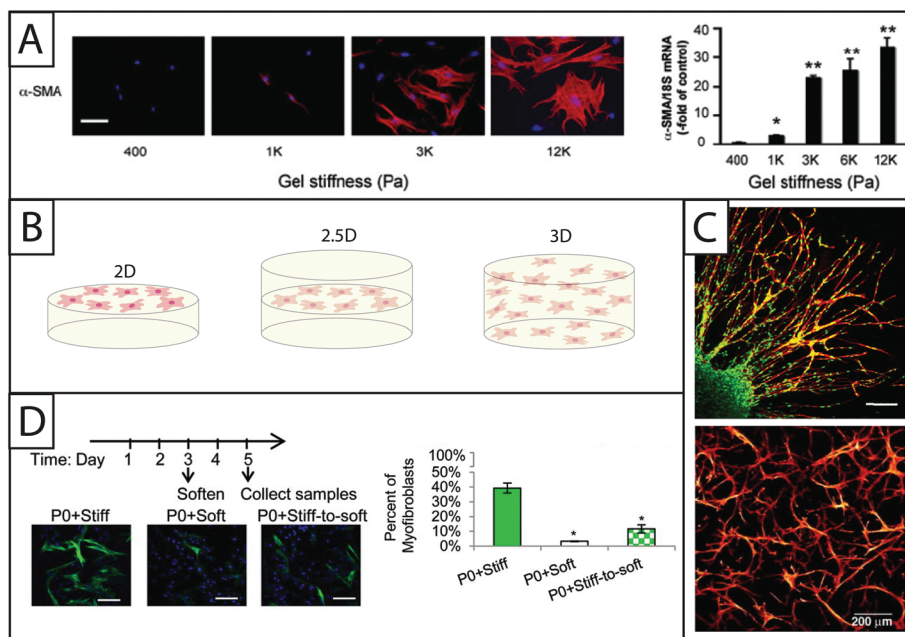


Fig. 5 Increasing dimensionality: Examining fibroblast response within static and dynamic model systems from two to three dimensions. (A) Polyacrylamide gels of various moduli modified with collagen I have been a dependable system for examining the effect of modulus on fibroblasts in 2D culture. Increasing the modulus of the hydrogels increases expression of α SMA (here, rat hepatic fibroblasts, α SMA immunostaining (left) and qRT-PCR (right)).⁷⁰ This result supports the growing body of evidence that substrate stiffness has a significant impact on fibroblast activation, corresponding with *in vivo* observations of myofibroblast persistence with increased tissue stiffening. Adapted from reference 70. (B) While many seminal studies have been made in 2D culture, cells natively are surrounded by matrix. Towards addressing this, fibroblasts have been cultured in 2D, 2.5D, and 3D geometries to understand the effect of polarization on cell behavior. 2D cell culture geometry, where fibroblasts are seeded on top of hydrogels, has been commonly used to study fibroblasts *in vitro* (left). 2.5D cell culture geometry is an emerging technique that allows for a decrease in polarization while maintaining the ability to image cells, a key to assessing α SMA stress fiber formation and cell activation (middle). 3D cell culture geometry is used to accurately mimic the lack of cell polarization within the *in vivo* environment (right); however, cells must be able to degrade and spread in the matrix of interest. (C) For example, in 3D culture, human foreskin fibroblasts (top) have been cultured within PEG gels that were rendered degradable by the incorporation of MMP-degradable peptide sequences. Fibroblasts encapsulated within a fibrin clot were shown invading the synthetic hydrogel by degrading and migrating through the network (scale bar, 150 μ m). Human foreskin fibroblasts directly encapsulated in these PEG hydrogels (bottom) formed a network with single cells migrating considerably within the gel over 30 days.^{76,79} Adapted from references 76 and 79. (D) Towards capturing temporal changes in the cell microenvironment, *in vitro* culture systems whose properties can be changed in time utilizing external triggers have been created. For example, photodegradable hydrogels have been utilized to trigger a temporal decrease in matrix modulus with light. Here, when the modulus of the hydrogel was reduced after three days of cell culture, fewer valve fibroblasts (VICs) expressed α SMA stress fibers (green) compared to VICs continually cultured on stiff hydrogels; however, the number of α SMA positive cells was still higher than VICs continually cultured on soft substrates, indicating that some portion of the fibroblasts can be de-activated with changes in matrix modulus at this time point in culture.¹⁹ Adapted from reference 19.

cytoskeletal organization, as qualitatively observed by F-actin staining.

These results concerning the role of matrix stiffness and topography are informative, but often these studies are conducted on 2D substrates. In these cases, fibroblasts interact with the matrix on one side of the cell. This inappropriate polarization of the cell body may alter the cytoskeletal organization of the cell and consequently activation. For this reason, there have been many efforts to study fibroblast behavior in their native orientation in three dimensions.

2.5D and 3D cell culture

The move to 3D cell culture has taken two distinct forms (Fig. 5B): (i) 'sandwich studies' or 2.5D studies in which hydrogels are stacked on top of one another with a layer of cells in between them and (ii) 3D studies in which fibroblasts are suspended in a hydrogel precursor solution and encapsulated

within the hydrogel network upon polymerization. The 2.5D cell culture geometry is relatively new for fibroblast culture, although relevant protocols have been published.^{71,116} The technique previously has been used to successfully culture salivary gland cells in hyaluronic acid hydrogels¹¹⁷ and breast epithelial cells in an ECM derived matrix.¹¹⁸ Additionally, human umbilical vein endothelial cells have been cultured in an interesting derivative of the 2.5D sandwich method where cells were seeded on polyacrylamide coated with collagen and then covered with another layer of assembled collagen. Although the layer above the cells has a much lower modulus, the cells can still interact with the collagen substrate on all sides, reducing polarization.¹¹⁶ The benefit of the 2.5D cell culture geometry is that it allows for cell imaging without more specialized equipment (*e.g.*, confocal microscope). Since the most commonly recognized marker of fibroblast activation is the organization of α SMA stress fibers, imaging is a critical



hydrogels. These techniques also can be used to change substrate properties or control the internal geometry of the hydrogels.^{18,121,127,148} In the future, these technologies may prove useful to study fibroblast activation within patterned hydrogels to elucidate the role of ECM heterogeneity or spatially controlled integrin binding.

Temporal hydrogel stiffening

In Section D, fibroblast response to a decrease in substrate modulus was highlighted. However, the temporal nature of fibroblast response to such decreases has not been fully explored. There have been recent efforts in designing materials that stiffen in response to an external trigger like UV light.⁸³ HA modified with methacrylates was used to initially form gels crosslinked by dithiothreitol (DTT). Subsequent stiffening was induced after the application of UV light and the polymerization of remaining methacrylate groups to form new crosslinks within the gel.⁸³ Stiffening materials such as this could prove useful in new studies to mimic tissue stiffening during healing or fibrosis to better understand fibroblast activation in response to temporal changes in matrix mechanics.

Novel materials

Self-assembling peptides are exciting materials for producing hydrogels that enable the culture of cells within a dynamic structure. These peptides have the benefit of mimicking the temporally changing and heterogeneous structure of the native ECM while maintaining a high degree of control over the formation and structure of soft hydrogels. Peptide-based hydrogels have been used for cell culture, but few studies have utilized them for wound healing or fibrosis models.¹²⁸ Similarly, engineered proteins or protein mimics are interesting tools for the formation of well-defined and tightly controlled hydrogel models that retain some of the complexity of the native ECM.¹²⁹

In addition to new synthetic materials, several natural materials that have not been previously included in hydrogel *in vitro* models may be of interest in future studies. For example, biglycan, a small leucine rich proteoglycan that interacts with ECM proteins and several growth factors, including TGF β 1, is suspected to play a role in wound healing, interacting with immune cells to recruit inflammatory cells to the site of injury.¹³⁰ The role of biglycan in wound healing and fibrosis is supported by a number of studies, which show increased concentrations of biglycan in fibrotic disease; however, it has not yet been incorporated into hydrogel models.^{131–133} Biglycan is just one example of several proteins and cytokines that have been shown to play a role in the development of fibrosis through *in vivo* models, yet their exact roles are difficult to decipher within the complex *in vivo* environment. Other such proteins include surfactant protein A,¹³⁴ serum amyloid P,¹³⁵ and adenyl cyclase 6.¹³⁶ The incorporation of these and other relevant cues could build upon prior work using hydrogel *in vitro* models and help bridge the gap between *in vitro* and *in vivo* studies of fibrosis.

F. Conclusions

Advances in our understanding of the mechanisms of wound healing and disease have made it apparent that the extracellular environment plays an essential role in these biological processes. *In vitro* models have been essential to developing this understanding and will continue to be important tools for the study of fibroblast function and phenotype in healing and disease. In this article, we have reviewed natural and synthetic materials that have been used within *in vitro* hydrogel-based cell culture models. We also have discussed materials and chemistries for biological functionalization of materials and emerging techniques that may prove useful in the development and advancement of new *in vitro* systems to further mimic key complexities of *in vivo* healing and disease progression.

Acknowledgements

The authors gratefully acknowledge support, for related work in their laboratories, from a National Science Foundation CAREER Award (DMR-1253906), the Pew Charitable Trusts (00026178), the National Science Foundation Systems Biology of Cells in Engineered Environments IGERT Program, and an Institutional Development Award (IDeA) from the National Institute of General Medical Sciences of the National Institutes of Health (P20GM103541). Additionally, the authors would like to thank Prathamesh Kharkar and Matthew Rehmann for feedback on earlier versions of this manuscript.

References

- 1 M. A. Carlson and M. T. Longaker, *Wound Repair Regen.*, 2004, **12**, 134–147.
- 2 W. K. Stadelmann, A. G. Digenis and G. R. Tobin, *Am. J. Surg.*, 1998, **176**, 26S–38S.
- 3 K. S. Midwood, L. V. Williams and J. E. Schwarzbauer, *Int. J. Biochem. Cell Biol.*, 2004, **36**, 1031–1037.
- 4 E. Crouch, *Am. J. Physiol.*, 1990, **259**, L159–L184.
- 5 B. Hinz, *J. Invest. Dermatol.*, 2007, **127**, 526–537.
- 6 B. Hinz, G. Celetta, J. J. Tomasek, G. Gabbiani and C. Chaponnier, *Mol. Biol. Cell*, 2001, **12**, 2730–2741.
- 7 J. L. Balestrini, S. Chaudhry, V. Sarrazy, A. Koehler and B. Hinz, *Integr. Biol.*, 2012, **4**, 410–421.
- 8 M. W. Tibbitt and K. S. Anseth, *Biotechnol. Bioeng.*, 2009, **103**, 655–663.
- 9 K. A. Beningo, C.-M. Lo and Y.-L. Wang, *Methods Cell Biol.*, 2002, **69**, 325–339.
- 10 B. V. Slaughter, S. S. Khurshid, O. Z. Fisher, A. Khademhosseini and N. A. Peppas, *Adv. Mater.*, 2009, **21**, 3307–3329.
- 11 T. L. Tuan, A. Song, S. Chang, S. Younai and M. E. Nimni, *Exp. Cell Res.*, 1996, **223**, 127–134.
- 12 P. A. Janmey, R. G. Wells, R. K. Assoian and C. A. McCulloch, *Differentiation*, 2013, **86**, 112–120.



- 13 Y. Adachi, T. Mio, K. Takigawa, I. Striz, D. J. Romberger, J. R. Spurzem and S. I. Rennard, *In Vitro Cell. Dev. Biol. Anim.*, 1998, **34**, 203–210.
- 14 F. Grinnell, *Trends Cell Biol.*, 2003, **13**, 264–269.
- 15 A. J. Booth, R. Hadley, A. M. Cornett, A. A. Dreffs, S. A. Mattes, J. L. Tsui, K. Weiss, J. C. Horowitz, V. F. Fiore, T. H. Barker, B. B. Moore, F. J. Martinez, L. E. Niklason and E. S. White, *Am. J. Respir. Crit. Care Med.*, 2012, **186**, 866–876.
- 16 F. Liu, J. D. Mih, B. S. Shea, A. T. Kho, A. S. Sharif, A. M. Tager and D. J. Tschumperlin, *J. Cell Biol.*, 2010, **190**, 693–706.
- 17 H. N. Chia, M. Vigen and A. M. Kasko, *Acta Biomater.*, 2012, **8**, 2602–2611.
- 18 A. M. Kloxin, J. A. Benton and K. S. Anseth, *Biomaterials*, 2010, **31**, 1–8.
- 19 H. Wang, M. W. Tibbitt, S. J. Langer, L. A. Leinwand and K. S. Anseth, *Proc. Natl. Acad. Sci. U. S. A.*, 2013, **11**, 19336–19341.
- 20 M. C. Cushing, P. D. Mariner, J.-T. Liao, E. A. Sims and K. S. Anseth, *FASEB J.*, 2008, **22**, 1769–1777.
- 21 W. Lee, T. G. Lee and W. G. Koh, *J. Ind. Eng. Chem.*, 2007, **13**, 1195–1200.
- 22 L. Harvey, A. Berk, C. A. Kaiser, M. Krieger, M. P. Scott, A. Bretscher, M. Ploegh and P. Matsudaira, *Molecular Cell Biology*, New York, 4th edn, 2000.
- 23 R. W. Farndale, T. Lisman, D. Bihan, S. Hamaia, C. S. Smerling, N. Pugh, A. Konitsiotis, B. Leitinger, P. G. de Groot, G. E. Jarvis and N. Raynal, *Biochem. Soc. Trans.*, 2008, **36**, 241–250.
- 24 R. Raghov, *FASEB J.*, 1994, **8**, 823–831.
- 25 A. M. Wojtowicz, A. Shekaran, M. E. Oest, K. M. Dupont, K. L. Templeman, D. W. Hutmacher, R. E. Guldberg and A. J. Garcia, *Biomaterials*, 2010, **31**, 2574–2582.
- 26 B. Hinz and G. Gabbiani, *Curr. Opin. Biotechnol.*, 2003, **14**, 538–546.
- 27 M. S. Hahn, B. A. Teply, M. M. Stevens, S. M. Zeitels and R. Langer, *Biomaterials*, 2006, **27**, 1104–1109.
- 28 K. Mochitate, P. Pawelek and F. Grinnell, *Exp. Cell Res.*, 1991, **193**, 198–207.
- 29 E. Tamariz and F. Grinnell, *Mol. Biol. Cell*, 2002, **13**, 3915–3929.
- 30 K. K. Sethi, I. V. Yannas, V. Mudera, M. Eastwood, C. McFarland and R. A. Brown, *Wound Repair Regen.*, 2002, **10**, 397–408.
- 31 A. Marinković, F. Liu and D. J. Tschumperlin, *Am. J. Respir. Cell Mol. Biol.*, 2013, **48**, 422–430.
- 32 D. J. Munoz-Pinto, A. C. Jimenez-Vergara, L. M. Gelves, R. E. McMahon, V. Guiza-Arguello and M. S. Hahn, *Biotechnol. Bioeng.*, 2009, **104**, 821–831.
- 33 Y. K. Zhu, X. D. Liu, M. C. Sköld, T. Umino, H. Wang, D. J. Romberger, J. R. Spurzem, T. Kohyama, F. Q. Wen and S. I. Rennard, *Am. J. Respir. Cell Mol. Biol.*, 2001, **25**, 245–253.
- 34 T. Kohyama, X. Liu, F. Wen, Y. K. Zhu, H. Wang, H. J. Kim, H. Takizawa, L. B. Cieslinski, M. S. Barnette and S. I. Rennard, *Am. J. Respir. Cell Mol. Biol.*, 2002, **26**, 694–701.
- 35 D. Kessler, S. Dethlefsen, I. Haase, M. Plomann, F. Hirche, T. Krieg and B. Eckes, *J. Biol. Chem.*, 2001, **276**, 36575–36585.
- 36 J. Fringer and F. Grinnell, *J. Biol. Chem.*, 2003, **278**, 20612–7.
- 37 X. Huang, N. Yang, V. F. Fiore, T. H. Barker, Y. Sun, S. W. Morris, Q. Ding, V. J. Thannickal and Y. Zhou, *Am. J. Respir. Cell Mol. Biol.*, 2012, **47**, 340–348.
- 38 M. C. Cushing and K. S. Anseth, *Science*, 2007, **316**, 1133–1134.
- 39 D. Velegol and F. Lanni, *Biophys. J.*, 2001, **81**, 1786–1792.
- 40 S. Nakagawa, P. Pawelek and F. Grinnell, *J. Invest. Dermatol.*, 1989, **93**, 792–798.
- 41 D. D. Allison, K. R. Braun, T. N. Wight and K. J. Grande-Allen, *Acta Biomater.*, 2009, **5**, 1019–1026.
- 42 J. W. Weisel, *Adv. Protein Chem.*, 2005, **70**, 247–299.
- 43 S. Cox, M. Cole and B. Tawil, *Tissue Eng.*, 2004, **10**, 942–954.
- 44 T. A. E. Ahmed, E. V. Dare and M. Hincke, *Tissue Eng. Part B. Rev.*, 2008, **14**, 199–215.
- 45 O. Ziv-Polat, H. Skaat, A. Shahar and S. Margel, *Int. J. Nanomedicine*, 2012, **7**, 1259–1274.
- 46 K. Yuan Ye, K. E. Sullivan and L. D. Black, *J. Vis. Exp.*, 2011, **55**, 1–6.
- 47 J. E. Mogford, B. Tawil, S. Jia and T. A. Mustoe, *Wound Repair Regen.*, 2009, **17**, 405–410.
- 48 D. Greiling and R. A. Clark, *J. Cell Sci.*, 1997, **110**(Pt 7), 861–870.
- 49 K. B. Hotary, I. Yana, F. Sabeh, X.-Y. Li, K. Holmbeck, H. Birkedal-Hansen, E. D. Allen, N. Hiraoka and S. J. Weiss, *J. Exp. Med.*, 2002, **195**, 295–308.
- 50 N. C. Hunt and L. M. Grover, *Biotechnol. Lett.*, 2010, **32**, 733–742.
- 51 D. Jiang, J. Liang and P. W. Noble, *Annu. Rev. Cell Dev. Biol.*, 2007, **23**, 435–461.
- 52 K. S. Masters, D. N. Shah, G. Walker, L. A. Leinwand and K. S. Anseth, *J. Biomed. Mater. Res., Part A*, 2004, **71**, 172–180.
- 53 S. T. Kreger and S. L. Voytik-Harbin, *Matrix Biol.*, 2009, **28**, 336–346.
- 54 A. J. E. Farran, S. S. Teller, A. K. Jha, T. Jiao, R. A. Hule, R. J. Clifton, D. P. Pochan, R. L. Duncan and X. Jia, *Tissue Eng. Part A*, 2010, 16.
- 55 Y. Li, D. Jiang, J. Liang, E. B. Meltzer, A. Gray, R. Miura, L. Wogensens, Y. Yamaguchi and P. W. Noble, *J. Exp. Med.*, 2011, **208**, 1459–1471.
- 56 J. A. Burdick and G. D. Prestwich, *Adv. Mater.*, 2011, **23**, H41–H56.
- 57 X. Xu, A. K. Jha, D. A. Harrington, M. C. Farach-Carson and X. Jia, *Soft Matter*, 2012, **8**, 3280–3294.
- 58 F. Rehfeldt, A. E. X. Brown, M. Raab, S. Cai, A. L. Zajac, A. Zemel and D. E. Discher, *Integr. Biol.*, 2012, **4**, 422–430.
- 59 S. C. Owen, S. A. Fisher, R. Y. Tam, C. M. Nimmo and M. S. Shoichet, *Langmuir*, 2013, **29**, 7393–7400.



- 109 A. Saxena, W. Chen, Y. Su, V. Rai, O. U. Uche, N. Li and N. G. Frangogiannis, *J. Immunol.*, 2013, **191**, 4838–4848.
- 110 Y. Akasaka, I. Ono, A. Tominaga, Y. Ishikawa, K. Ito, T. Suzuki, R. Imaizumi, S. Ishiguro, K. Jimbow and T. Ishii, *Wound Repair Regen.*, 2007, **15**, 378–389.
- 111 B. K. Mann, R. H. Schmedlen and J. L. West, *Biomaterials*, 2001, **22**, 439–444.
- 112 K. G. Robinson, T. Nie, A. D. Baldwin, E. C. Yang, K. L. Kiick and R. E. Akins, *J. Biomed. Mater. Res., Part A*, 2012, **100**, 1356–1367.
- 113 J. E. Saik, D. J. Gould, E. M. Watkins, M. E. Dickinson and J. L. West, *Acta Biomater.*, 2011, **7**, 133–143.
- 114 P. Ayala, J. I. Lopez and T. A. Desai, *Tissue Eng., Part A*, 2010, **16**, 2519–2527.
- 115 S. Weng and J. Fu, *Biomaterials*, 2011, **32**, 9584–9593.
- 116 R. S. Fischer, K. A. Myers, M. L. Gardel and C. M. Waterman, *Nat. Protocols*, 2012, **7**, 2056–2066.
- 117 S. Pradhan-bhatt, D. A. Harrington, R. L. Duncan, X. Jia, R. L. Witt and M. C. Farach-carson, *Tissue Eng., Part A*, 2013, **19**, 1610–1620.
- 118 G. Y. Lee, P. A. Kenny, E. H. Lee and M. J. Bissell, *Nat. Protoc.*, 2007, **4**, 359–365.
- 119 E. J. Yun, B. Yon, M. K. Joo and B. Jeong, *Biomacromolecules*, 2012, **13**, 1106–1111.
- 120 Y.-H. Lee, J.-R. Huang, Y.-K. Wang and K.-H. Lin, *Integr. Biol.*, 2013, **5**, 1447–1455.
- 121 A. M. Kloxin, A. M. Kasko, C. N. Salinas and K. S. Anseth, *Science*, 2009, **324**, 59–63.
- 122 C. A. Goubko, A. Basak, S. Majumdar and X. Cao, *J. Biomed. Mater. Res., Part A*, 2013, 1–11.
- 123 R. G. Wylie and M. S. Shoichet, *Biomacromolecules*, 2011, **12**, 3789–3796.
- 124 M. S. Hahn, J. S. Miller and J. L. West, *Adv. Mater.*, 2006, **18**, 2679–2684.
- 125 J. H. Wosnick and M. S. Shoichet, *Chem. Mater.*, 2008, **20**, 55–60.
- 126 K. A. Mosiewicz, L. Kolb, A. J. van der Vlies, M. M. Martino, P. S. Lienemann, J. A. Hubbell, M. Ehrbar and M. P. Lutolf, *Nat. Mater.*, 2013, **12**, 1072–1078.
- 127 C. A. DeForest, B. D. Polizzotti and K. S. Anseth, *Nat. Mater.*, 2009, **8**, 659–664.
- 128 J. E. Gough, A. Saiani and A. F. Miller, *ICE Publ.*, 2011, **1**, 2–12.
- 129 E. Cosgriff-Hernandez, M. S. Hahn, B. Russell, T. Wilems, D. Munoz-Pinto, M. B. Browning, J. Rivera and M. Höök, *Acta Biomater.*, 2010, **6**, 3969–3977.
- 130 M. V. Nastase, M. F. Young and L. Schaefer, *J. Histochem. Cytochem.*, 2012, **60**, 963–975.
- 131 M. B. Stokes, S. Holler, Y. Cui, K. L. Hudkins, F. Eitner, A. Fogo and C. E. Alpers, *Kidney Int.*, 2000, **57**, 487–498.
- 132 K. Moreth, R. V. Iozzo and L. Schaefer, *Cell Cycle*, 2012, **11**, 2084–2091.
- 133 T. Ebihara, N. Venkatesan, R. Tanaka and M. S. Ludwig, *Am. J. Respir. Crit. Care Med.*, 2000, **162**, 1569–1576.
- 134 H. Goto, J. G. Ledford, S. Mukherjee, P. W. Noble, K. L. Williams and J. R. Wright, *Am. J. Respir. Crit. Care Med.*, 2010, **181**, 1336–1344.
- 135 L. A. Murray, R. Rosada, A. P. Moreira, A. Joshi, M. S. Kramer, D. P. Hesson, R. L. Argentieri, S. Mathai, M. Gulati, E. L. Herzog and C. M. Hogaboam, *PLoS One*, 2010, **5**, e9683.
- 136 X. Liu, F. Li, S. Q. Sun, M. Thangavel, J. Kaminsky, L. Balazs and R. S. Ostrom, *Am. J. Physiol.*, 2010, 819–829.
- 137 E. Ruoslahti, *Annu. Rev. Cell Dev. Biol.*, 1996, **12**, 697–715.
- 138 J. A. Craig, E. L. Rexeisen, A. Mardilovich, K. Shroff and E. Kokkoli, *Langmuir*, 2008, **24**, 10282–10292.
- 139 Y. Yamada, K. Hozumi and M. Nomizu, *Chem.-Eur. J.*, 2011, **17**, 10500–10508.
- 140 Y. Kumada and S. Zhang, *PLoS One*, 2010, **5**, e10305.
- 141 C. M. Yamazaki, Y. Kadoya, K. Hozumi, H. Okano-Kosugi, S. Asada, K. Kitagawa, M. Nomizu and T. Koide, *Biomaterials*, 2010, **31**, 1925–1934.
- 142 C. D. Reyes and A. J. García, *J. Biomed. Mater. Res., Part A*, 2003, **65**, 511–523.
- 143 V. P. Ivanova, Z. V. Kovaleva, V. V. Anokhina and A. I. Krivchenko, *Cell Tissue Biol.*, 2013, **7**, 21–28.
- 144 J. E. Frith, R. J. Mills, J. E. Hudson and J. J. Cooper-White, *Stem Cells Dev.*, 2012, **21**, 2442–2456.
- 145 C. B. Raub, V. Suresh, T. Krasieva, J. Lyubovitsky, J. D. Mih, A. J. Putnam, B. J. Tromberg and S. C. George, *Biophys. J.*, 2007, **92**, 2212–2222.
- 146 S. Rhee, *Exp. Mol. Med.*, 2009, **41**, 858–865.
- 147 A. M. Kloxin, C. J. Kloxin, C. N. Bowman and K. S. Anseth, *Adv. Mater.*, 2010, **22**, 3484–3494.
- 148 M. Guvendiren, M. Perepelyuk, R. G. Wells and J. A. Burdick, *J. Mech. Behav. Biomed. Mater.*, 2013, **34**, 1–11.

