



Cite this: *Phys. Chem. Chem. Phys.*,  
2024, 26, 23588

# Chemically accurate predictions for water adsorption on Brønsted sites of zeolite H-MFI†

Henning Windeck, Fabian Berger and Joachim Sauer \*<sup>ab</sup>

We investigate the adsorption of water molecules in the zeolite H-MFI at isolated Brønsted acid sites (BAS) for loadings of 1, 2, and 3 H<sub>2</sub>O/BAS. We consider two approaches to the O<sub>3</sub>Al–O(H)–Si sites: the Brønsted-type approach of H<sub>2</sub>O to the acidic proton and the Lewis-type approach to the aluminium atom of the AlO<sub>4</sub> tetrahedron. From the twelve crystallographically inequivalent framework sites for Al, a representative set of six active site positions is chosen. For them, we calculate CCSD(T)-quality adsorption energies at MP2-quality adsorption structures for different approaches, 48 in total. The Brønsted-type approach is favoured for most cases but the Lewis-type approach has similar stability for some framework positions. We predict heats of adsorption per molecule ranging from 60 to 76, 56 to 65, and 56 to 64 kJ mol<sup>−1</sup> for loadings of 1, 2, and 3 H<sub>2</sub>O/BAS, respectively. For 1 H<sub>2</sub>O/BAS, the experimental result (70 kJ mol<sup>−1</sup>) falls into the range of our predictions, whereas for 2 and 3 H<sub>2</sub>O/BAS, the measured adsorption heats per molecule (74 and 70 kJ mol<sup>−1</sup>, respectively) are larger than our predictions. For 2 H<sub>2</sub>O/BAS, the ion-pair structure generated by proton transfer to the water dimer competes with the neutral adsorption complex. The DFT adsorption energies (PBE+D2) deviate significantly from the CCSD(T)-quality reference energies, by up to 25 kJ mol<sup>−1</sup> for 1 H<sub>2</sub>O/BAS, 25 kJ mol<sup>−1</sup> per H<sub>2</sub>O for 2 H<sub>2</sub>O/BAS, and 18 kJ mol<sup>−1</sup> per H<sub>2</sub>O for 3 H<sub>2</sub>O/BAS. Specifically, PBE+D2 overstabilises the ion-pair structure, *i.e.* in many cases the PBE+D2 error is much larger for ionic than for neutral adsorption structures.

Received 18th July 2024,  
Accepted 27th August 2024

DOI: 10.1039/d4cp02851a

rsc.li/pccp

## 1. Introduction

Zeolites are solid catalysts that are widely used in industry.<sup>1</sup> There is renewed interest<sup>2–4</sup> triggered by catalytic biomass conversion in the aqueous phase.<sup>5</sup> Thus, understanding water adsorption in zeolites is of fundamental importance. Water is also produced in many zeolite-catalysed reactions, *e.g.* in the methanol-to-olefin (MTO) process.<sup>6,7</sup> Residual and defect-bound water may also result from activation of “as-synthesised” samples which removes water from the pores and unlocks the active sites. Since decades ago, numerous experimental and computational studies have examined the interaction of water molecules with acidic zeolite catalysts.<sup>8,9</sup>

The proton form of zeolites is formally obtained from a nanoporous SiO<sub>2</sub> framework by substituting a silicon atom with

an aluminium atom and adding a charge-compensating proton. This creates Si–O(H)···AlO<sub>3</sub> bridges which are the main active sites of zeolite catalysts. Since they are the origin of the Brønsted acidity of zeolites,<sup>10</sup> Si–O(H)···AlO<sub>3</sub> bridges are referred to as Brønsted acid sites (BAS). While H-bonding of water molecules to BAS is well-known,<sup>11–13</sup> it was only in 2015 that a second, albeit energetically less favourable, adsorption structure for H<sub>2</sub>O has been suggested<sup>14</sup> in which the four-coordinated Al of the bridging Si–O(H)···AlO<sub>3</sub> group acts as Lewis acid, see Fig. 1.

In the present computational study, we investigate water adsorption at isolated BAS of the ideal H-MFI structure in the low-loading regime, *i.e.* for 1, 2, and 3 H<sub>2</sub>O/BAS. We take both the Brønsted-type and the Lewis-type approach into account,

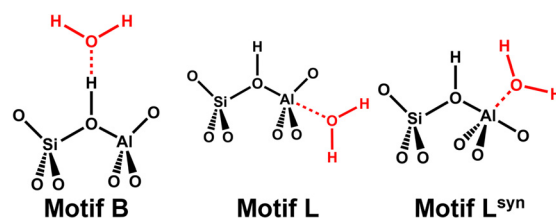


Fig. 1 Interaction motifs for water adsorption on bridging Si–O(H)···AlO<sub>3</sub> groups: Brønsted approach forming an H-bond (motif B) or Lewis-type approach (motifs L or L<sup>syn</sup>).

<sup>a</sup> Institut für Chemie, Humboldt-Universität zu Berlin, Unter den Linden 6, 10099 Berlin, Germany. E-mail: js@chemie.hu-berlin.de

<sup>b</sup> Department of Physical and Macromolecular Chemistry and Charles University Centre of Advanced Materials, Charles University, 12843 Prague, Czech Republic

† Electronic supplementary information (ESI) available: Tests for settings within the embedding scheme, as well as energies, structural features, and experimental data. In addition, we provide *x,y,z* coordinates and absolute energies of the MP2:PBE+D2 optimised structures as well as example inputs. See DOI: <https://doi.org/10.1039/d4cp02851a>

‡ Present address: Yusuf Hamied Department of Chemistry, University of Cambridge, CB2 1EW Cambridge, UK.



see Fig. 1. We will address the central question if the proton is transferred from the BAS to the adsorbed water molecules and how this depends on the number of adsorbed water molecules. We will show that reliable predictions of the protonation state and chemically accurate predictions of the heat of adsorption requires to go beyond commonly applied levels of density functional theory (DFT), the so-called generalised gradient approximation (GGA).<sup>15,16</sup> To do so, we use our hybrid high-level QM: low-level QM method (QM = quantum mechanics)<sup>17</sup> which yields chemically accurate results ( $\pm 4$  kJ mol<sup>-1</sup>)<sup>18</sup> at the level of coupled cluster theory with singles, doubles, and perturbative triples substitutions (CCSD(T)).<sup>19,20</sup>

Early calculations<sup>11–13</sup> predicted for a single adsorbed molecule that the neutral adsorption complex is a minimum on the potential energy surface whereas the hydronium ion is a transition structure for proton exchange.<sup>11,12</sup> They further showed that an ion-pair complex cannot explain the characteristic pair of infrared (IR) bands observed in the H-bond region (2885 and 2460 cm<sup>-1</sup>), contrary to the experimental assignment.<sup>21</sup> The conclusive experiment was <sup>18</sup>O substitution of H<sub>2</sub>O which showed no effect on this pair of bands.<sup>22</sup> The calculations for the neutral H-bonded complex explained this pair of bands assuming a Fermi resonance between the strongly red-shifted bridging OH group engaged in H-bonding and the overtone of the in-plane Si–O–H bending.<sup>8,11,23</sup> Additional evidence came from an inelastic neutron scattering (INS) spectrum which could be only explained assuming a neutral adsorption complex.<sup>24</sup> For loading of two water molecules per BAS (2 H<sub>2</sub>O/BAS), proton transfer with formation of H<sub>5</sub>O<sup>+</sup> was predicted as a minimum energy structure,<sup>11–13</sup> in agreement<sup>25</sup> with evidence for protonated adsorbed water molecules produced by neutron diffraction.<sup>26</sup> Subsequent Car–Parrinello molecular dynamics (CPMD) simulations showed that, for 2 H<sub>2</sub>O/BAS, the neutral (H<sub>2</sub>O)<sub>2</sub> complex and the H<sub>5</sub>O<sup>+</sup> ion-pair structure are about equally stable,<sup>27,28</sup> but the precise energy balance depends on the specific functional used for the DFT calculations.<sup>8</sup> Further DFT-based simulations<sup>27,29</sup> predicted that, at finite temperatures, the protonated dimer is not stable, protonated water trimers may exist as a short-lived species, and only the tetramer forms a stable protonated cluster. The trend to more stable protonated clusters with increasing number of water molecules corresponds to the increasing proton affinity of water clusters.<sup>27,30</sup>

Recent *meta*-dynamics simulations with the PBE<sup>15</sup> functional augmented with Grimme's D2 dispersion term<sup>31</sup> for up to eight water molecules in four different zeolite frameworks<sup>32</sup> confirmed the earlier findings and reached an important additional conclusion. With a properly chosen collective variable it was possible to distinguish two states of protonated water clusters. In the first, the proton is transferred to the water molecule closest to the BAS forming a Zundel-type structure. In the second, a hydronium ion is formed that is fully solvated by other water molecules. From 2D IR experiments for H-MFI and molecular dynamics (MD) with the revPBE functional<sup>33</sup> augmented with Grimme's D3 dispersion term,<sup>34</sup> a similar conclusion has been reached.<sup>35,36</sup> For 2 H<sub>2</sub>O/BAS, the proton is shared between the water molecule and the BAS whereas for

3–8 H<sub>2</sub>O/BAS, proton sharing occurs primarily between two water molecules. For loadings of 2–9 H<sub>2</sub>O/BAS, Hu, Lercher, and co-workers observed a <sup>1</sup>H-NMR signal at 9 ppm and assigned it to hydrated hydronium ions,<sup>2</sup> in agreement with an early prediction of a signal at 9.5 ppm for protonated water dimers in zeolites.<sup>37</sup>

For adsorption energies, DFT (PBE functional) calculations for 1, 2, 3, and 4 H<sub>2</sub>O/BAS in H-CHA yielded the expected monotonous decrease with the number of water molecules, 76, 61, 59, 60 kJ mol<sup>-1</sup>, respectively.<sup>29</sup> This was consistent with the monotonous decrease of the heat of adsorption from  $80 \pm 10$  kJ mol<sup>-1</sup> (1 H<sub>2</sub>O/BAS) to  $60 \pm 10$  kJ mol<sup>-1</sup> (2–4 H<sub>2</sub>O/BAS) derived by Olson, Haag, and Borghard from isotherms<sup>38</sup> and measured by Bolis, Busco, and Ugliengo using microcalorimetry.<sup>39</sup> Liu, Lercher, and co-workers studied the gradual hydration of H-MFI using microcalorimetry for samples with varying Si/Al ratios.<sup>3</sup> For water loadings  $\geq 3$  H<sub>2</sub>O/BAS, they found the expected trend of steadily decreasing heats of adsorption which eventually reach the condensation enthalpy of water ( $-45$  kJ mol<sup>-1</sup>), but that adsorption of the second water molecule per BAS is more exothermic than the first water came as a surprise. For the samples with Si/Al = 110 and 45, they measured integral heats of adsorption per molecule of  $70.2 \pm 0.5$ ,  $74.4 \pm 0.7$ , and  $69.7 \pm 2.1$  kJ mol<sup>-1</sup> for loadings of 1, 2, and 3 H<sub>2</sub>O/BAS, respectively, see Section S4 of the ESI.†

Previous DFT studies of water adsorption in H-MFI<sup>2,14,32,35,36,40–43</sup> all relied on GGA-type functionals which – due to the self-interaction error – overstabilise polar structures. At this rung of the Jacob's ladder,<sup>44</sup> PBE<sup>15</sup> is probably the most widely applied functional for solids and surfaces. Augmented with Grimme's D2 or D3 dispersion terms,<sup>31,34</sup> absolute errors of about 20–70 kJ mol<sup>-1</sup> have been reported for adsorption and reactions in zeolites.<sup>45–51</sup> For H-bonded systems, too low proton jump barriers<sup>52</sup> and too strong H-bonding is found. For example, for adsorption of methanol and ethanol in H-MFI, the adsorption energies predicted by PBE+D2 are 17 and 22 kJ mol<sup>-1</sup>, respectively, too binding.<sup>53</sup> Moreover, GGA-type functionals yield too weak and too long O–H bonds<sup>54</sup> which are too much stretched on H-bond formation.<sup>55</sup> This leads to a too large red-shift of the O–H stretching band upon adsorption.<sup>54,56</sup> Comparison of PBE+D2 results with converged CCSD(T) calculations for the cyclic water trimer, tetramer, and pentamer<sup>57</sup> provides further evidence for the shortcomings of GGA functionals for H-bonded systems, see Section S1.5 of the ESI.†

To go beyond DFT in general and beyond PBE+D2/D3 in particular, we combine Møller–Plesset perturbation theory to second order (MP2)<sup>58</sup> for cluster models with PBE+D2 on periodic models (hybrid MP2:PBE+D2) for optimising structures.<sup>17</sup> We stay with D2 because for zeolites D3 is no improvement over D2.<sup>48</sup> At the MP2-quality structures, we employ smaller cluster models to evaluate the CCSD(T)-MP2 energy difference. This defines the hybrid MP2:(PBE+D2)+ $\Delta$ CC approach applied before to a variety of molecule–surface interactions.<sup>17,56,59</sup> In addition, we test the Becke 3-parameter Lee–Yang–Parr (B3LYP)<sup>60,61</sup> exchange correlation functional augmented with Grimme's D3 dispersion term<sup>34</sup> (B3LYP+D3)



as an alternative to MP2 in hybrid B3LYP+D3:PBE+D2 structure optimisations.

For brevity and readability, we will refer to our hybrid MP2:PBE+D2 and MP2:(PBE+D2)+ACC results as MP2 and MP2+ACC results, respectively. The MP2+ACC energies are single-point results at MP2 structures.

## 2. Methods and models

### 2.1. Computational details

Periodic DFT calculations are performed with the PBE<sup>15</sup> exchange correlation functional augmented with Grimme's D2 dispersion term<sup>31</sup> and Ewald summation<sup>62</sup> as implemented in VASP 5.4.1.<sup>63–66</sup> Plane wave basis sets are used for the valence electrons. The projector augmented wave method (PAW) is used for core electrons (standard potentials). The Brillouin-zone is sampled at the  $\Gamma$ -point only. These settings have performed well for similar systems.<sup>47–49,51,67</sup> A kinetic energy cut-off of 400 eV is chosen, except for the iterative cell vector optimisations which use a cut-off of 800 eV to minimise the effect of volume change on the basis set in each iteration.<sup>68</sup> Cell vectors are optimised for the most stable conformer of each active site position individually, see Table S18 in the ESI.<sup>†</sup> Convergence thresholds are set to  $10^{-7}$  eV for changes in energy and  $0.005 \text{ eV } \text{\AA}^{-1}$  for changes in structure. Hessian matrices are calculated numerically using central finite differences and Cartesian displacements of  $0.01 \text{ \AA}$  with an energy convergence threshold of  $10^{-8}$  eV. They are used to verify stationary points by normal mode analysis as well as to obtain zero-point vibrational energies and thermal enthalpy contributions.

We perform hybrid MP2:PBE+D2 calculations using a mechanical embedding scheme<sup>69,70</sup> which combines MP2<sup>58,71</sup> calculations on cluster models with PBE+D2 calculations on the periodic system.<sup>52,59,72</sup> We use hybrid MP2:PBE+D2 forces to reoptimise PBE+D2 structures. These calculations are performed with the MonaLisa code<sup>73,74</sup> which couples ORCA 4.2.1<sup>75,76</sup> for cluster calculations with VASP 5.4.1<sup>63–66</sup> for periodic calculations. Section S3 of the ESI<sup>†</sup> presents all cluster models. As suggested previously,<sup>69,70</sup> dangling bonds are capped by hydrogen atoms with a fixed O–H bond length of 95.3 pm. As an alternative to MP2 as high-level method, B3LYP+D3 is tested in hybrid B3LYP+D3:PBE+D2 structure optimisations. Hybrid structure optimisations use the def2-TZVP basis set<sup>77</sup> for PBE+D2 low-level cluster calculations and the def2-TZVPP basis set<sup>77</sup> for MP2 or B3LYP+D3 high-level cluster calculations.<sup>67,78,79</sup>

The domain-based local pair natural orbital (DLPNO) approximation (tightPNO settings) is used with MP2 and CCSD(T) in hybrid MP2:(PBE+D2)+ACC single-point calculations,<sup>80,81</sup> but not for hybrid MP2:PBE+D2 structure optimisations which are performed with standard RI-MP2 (RI = resolution of identity approximation<sup>82</sup>). MP2 and CCSD(T) energies are extrapolated to the complete basis set (CBS) limit using the cc-pVnZ ( $n = \text{T, Q}$ ) basis sets<sup>83,84</sup> in a two-point extrapolation scheme.<sup>85,86</sup> Adsorption energies are counterpoise-corrected to minimise



Fig. 2 Topology of the MFI framework featuring straight and zigzag channels as well as intersection regions.

the effect of the basis set superposition error,<sup>87</sup> but not in hybrid MP2:PBE+D2 structure optimisations. The employed hybrid methodology has been tested extensively, see Section S1 of the ESI.<sup>†</sup>

### 2.2. Periodic H-MFI models

The MFI framework features straight and zigzag channels with spacious cavities at their intersection, see Fig. 2. In the orthorhombic MFI framework,<sup>88</sup> 12 crystallographically unique tetrahedral sites (T-sites) exist which can be occupied by aluminium and each aluminium atom is surrounded by four crystallographically distinct oxygen atoms to which the proton can be attached. This results in 48 possible BAS positions. We consider only isolated BAS, *i.e.* one aluminium substitution per unit cell (Si/Al ratio of 95).

Depending on the aluminium and proton positions, the sites for Brønsted and Lewis approach to the BAS can be in different regions of the framework. To examine the effect of the active site heterogeneity on the adsorption of water, we define a representative set of five sites that covers all regions in H-MFI, see Table 1. Whereas the aluminium siting is not governed by thermodynamic stability, but depends on the synthesis conditions,<sup>89–91</sup> the protons are mobile<sup>92</sup> and will assume their most stable position, in particular in the presence of water.<sup>93</sup> We follow previous work<sup>54</sup> in selecting most probable Al lattice positions, and for each of them we choose the most stable proton position, see Table 1. The Al3–O5(H)–Si2 site, which is

Table 1 Locations of Brønsted acid sites (BAS) and their accessibility for Brønsted-type (B) and Lewis-type (L) approach in the MFI framework. As B and L sites often point into different topological regions, some combinations are not possible (indicated with a dash)

Lewis-type approach (L)	Brønsted-type approach (B)		
	Straight	Zigzag	Intersection
Straight	—	Al11–O24(H)–Si10	—
Zigzag	Al7–O17(H)–Si8	—	—
Intersection	Al2–O7(H)–Si6	Al6–O10(H)–Si3	—
Wall	—	—	Al12–O8(H)–Si3
Wall	—	—	Al3–O5(H)–Si2



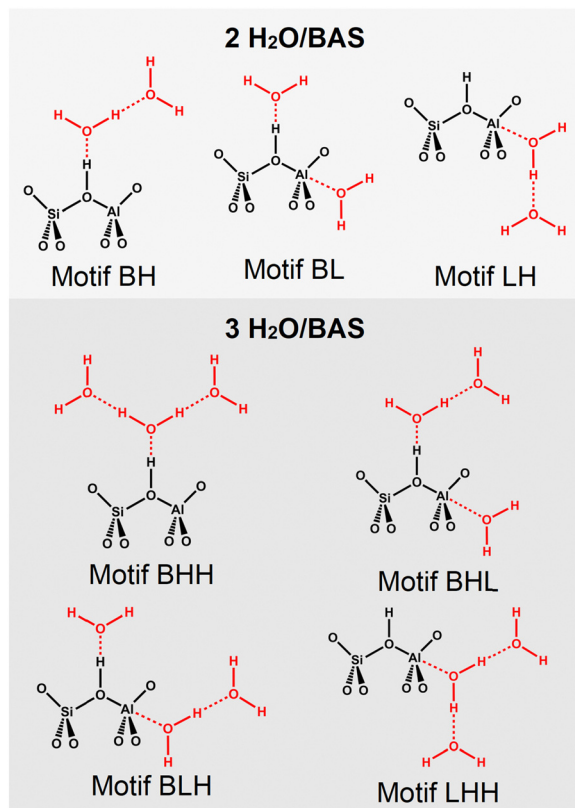


Fig. 3 Interaction motifs for water adsorption *via* Brønsted-type (B) and Lewis-type (L) approach in H-MFI. Additional water molecules can form H-bonds (H) with other water molecules.

also in the very accessible intersection region, is added for comparison with a previous study.<sup>14</sup> Having defined the proton positions in Table 1, we will refer to the BAS simply using the T-site at which the aluminium atom resides: T2, T3, T6, T7, T11, and T12. BAS with aluminium at T7 (regular site) or T12 (intersection site)<sup>94</sup> are commonly used in computational studies. *e.g.* ref. 94 and 95.

For loadings of 2 and 3 H<sub>2</sub>O/BAS, H-bonding (H) between water molecules is an option. Hence, the adsorption motifs are BH, BL, and LH for 2 H<sub>2</sub>O/BAS as well as BHH, LHH, BHL, and BLH for 3 H<sub>2</sub>O/BAS, see Fig. 3. The periodic models contain one active site per unit cell which implies a homogeneous distribution of water molecules over the active sites.

### 3. Results and discussion

#### 3.1. PBE+D2 structures and energies: conformational diversity

For adsorption of two and three water molecules, different combinations of Brønsted-type (motif B) and Lewis-type approach (motif L)<sup>14</sup> exist for each framework position, see Fig. 3. The *syn*-approach to the Lewis site (L<sup>syn</sup>, see Fig. 1) is considered whenever steric constraints prohibit an approach in *anti*-position. In addition to the primary H-bond with the BAS, water molecules can form secondary H-bonds with oxygen

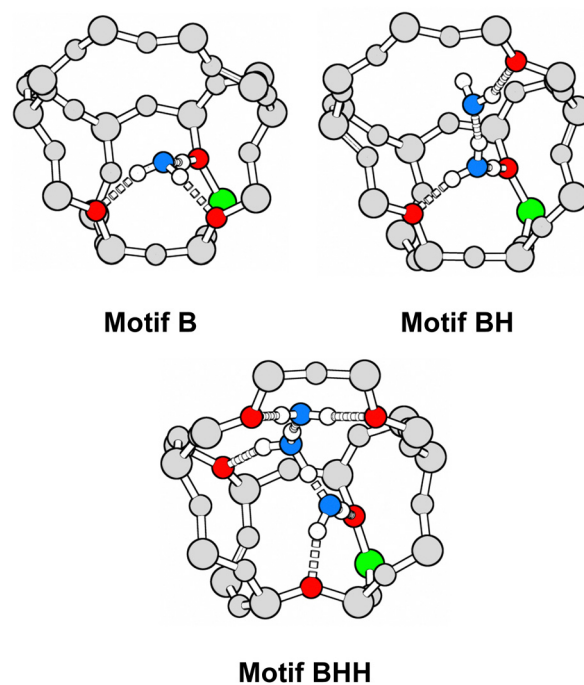


Fig. 4 B, BH, and BHH adsorption structures at T11. Colour code: aluminium – green, framework oxygen accepting H-bond – red, oxygen in water molecules – blue, framework silicon and oxygen – grey, hydrogen – white.

atoms in different Si–O–Si framework sites, leading to multiple conformers for each interaction motif at each framework position. Fig. 4 shows the B, BH, and BHH adsorption structures at T11 as an example. As the secondary H-bonding interactions can be strong, the conformers can differ significantly in adsorption energy. We use chemical intuition to find all sensible adsorption structures. Overall, 538 unique adsorption structures were identified: 78, 182, and 278 for loadings of 1, 2, and 3 H<sub>2</sub>O/BAS, respectively. This illustrates that water adsorption in H-MFI is a complex computational problem.

Fig. 5 shows the ranges of PBE+D2 adsorption energies for different conformers at the same site, see ESI†, Section S2.2 for details. For a given framework position, the adsorption energy for a particular motif varies vastly across the different conformers. In most cases, the difference between the most and least stable conformer is between 10 and 30 kJ mol<sup>−1</sup>. Fig. S5 in the ESI† presents the variation of adsorption energies across the conformers and Fig. S6 in the ESI† the adsorption energy differences with respect to the most stable conformer. These figures show that the large ranges between most and least stable conformer are not caused by outliers, which points to the importance of a comprehensive sampling of conformers when a local approach is used for thermodynamic predictions instead of global sampling with, *e.g.*, molecular dynamics.

As a trend, the energy ranges become broader with increasing water loading. Larger water clusters can form H-bonds to framework oxygen atoms that are farther away from the active sites. The overall number of H-bonding opportunities increases and thus a larger number of conformers is observed. While a single water molecule can only form H-bonds with framework





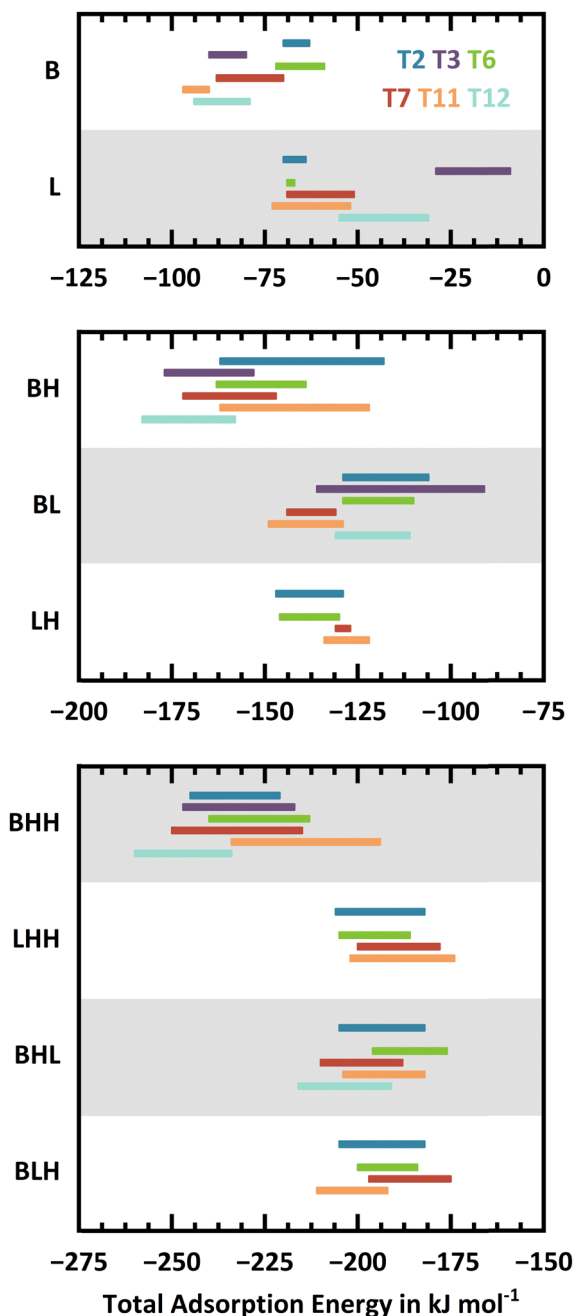


Fig. 5 Ranges of adsorption energies for different conformers of a given adsorption motif as obtained with PBE+D2. Colour code (top to bottom for each interaction motif): Al2–O7(H)–Si6 (T2) – blue, Al3–O5(H)–Si2 (T3) – violet, Al6–O10(H)–Si3 (T6) – green, Al7–O17(H)–Si8 (T7) – red, Al11–O24(H)–Si10 (T11) – orange, and Al12–O8(H)–Si3 (T12) – turquoise.

oxygen atoms that are in direct vicinity to the active site, a cluster of three water molecules can extend across the channels. When divided by the number of water molecules the energy ranges become narrower with increasing water loading, see ESI,† Fig. S7.

### 3.2. MP2 adsorption structures compared to PBE+D2 results

For each interaction motif (B, L, BH, BL, LH, BHH, LHH, BHL, and BLH) at every framework position (T2, T3, T6, T7, T11, and T12),



Fig. 6 Maximum deviation (signed) as well as mean absolute (MAD) and mean signed (MSD) deviation of all OH bond lengths ( $\Delta R_{OH}$ ) of PBE+D2 ("PBE") and hybrid B3LYP+D3:PBE+D2 ("B3LYP") structures referenced to MP2 structures for the most stable conformers of each interaction motif at each framework position.

the most stable conformer at the PBE+D2 level is selected for a structure optimisation with MP2. Since at some T-sites certain Lewis-type interaction motifs are not possible, this yields 48 conformers in total.

For the different interaction motifs, Fig. 6 shows the maximum deviation (signed) as well as the mean absolute (MAD) and mean signed (MSD) deviation of all OH bond lengths obtained with PBE+D2 from the MP2 reference values, see Section S2.3 of the ESI† for details. By far, BH shows the highest maximum deviations of up to 13.5 pm. MADs and MSDs are equivalent in all cases, demonstrating that PBE+D2 systematically predicts too long, *i.e.*, too weak, covalent OH bonds. The MAD is highest for B (2.8 pm), BH (2.9 pm), and BHL (2.4 pm). Adsorption *via* the Lewis-type approach is less affected by the limitations of PBE+D2. Still, MP2 reoptimisation leads to a shortening of Al···OH<sub>2</sub> distances (which are typically around 200 pm) by 1–5 pm in many cases, see Section S2.3 of the ESI.†

As a computationally less demanding alternative, hybrid B3LYP+D3:PBE+D2 structure optimisations are also conducted, see Fig. 6. The adsorption structures obtained are very similar to the MP2 ones, see Section S2.3 of the ESI.† Referenced to MP2 structures, the MADs are 1.4–2.9 pm for PBE+D2 but only 0.1–0.4 pm for hybrid B3LYP+D3:PBE+D2. For the latter, also the maximum deviations are small, with values between 0.2–1.4 pm. These results, obtained for a diverse set of 48 water adsorption structures, show that hybrid B3LYP+D3:PBE+D2 is indeed a cost-efficient alternative to MP2 for structure optimisations. For adsorption energies, however, it does not reach MP2 accuracy, see Section S2.3 of the ESI.†



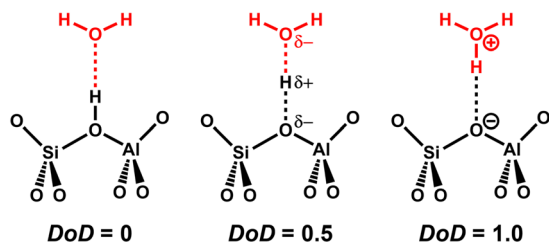


Fig. 7 Schematic representation of borderline cases of the degree of deprotonation (DoD) of the BAS, see eqn (1).

### 3.3. Protonation state of water clusters attached to Brønsted acid sites

When water molecules interact with a BAS, they can get protonated and thus deprotonate the BAS.<sup>11,96</sup> As a structural descriptor, we introduce the degree of deprotonation (DoD) of the BAS:

$$\text{DoD} = \frac{R_{\text{ZO-H}}^{\text{load}} - R_{\text{ZO-H}}^{\text{free}}}{R_{\text{ZO-H}}^{\text{load}} - R_{\text{ZO-H}}^{\text{free}} + R_{\text{ZO-H-OH}_2}^{\text{load}} - R_{\text{H-OH}_2^+}^{\text{free}}} \quad (1)$$

$R_{\text{ZO-H}}^{\text{load}}$  and  $R_{\text{ZO-H}}^{\text{free}}$  are the OH bond distances of the bridging hydroxyl group in the adsorption complex and in the bare zeolite, respectively.  $R_{\text{ZO-H-OH}_2}^{\text{load}}$  is the distance between the proton of the bridging hydroxyl group and the oxygen atom of the adsorbed water molecule and  $R_{\text{H-OH}_2^+}^{\text{free}}$  is the OH bond distance in the isolated hydronium ion. Consequently, the limiting case of DoD = 0 (neutral complex) corresponds to no deprotonation of the BAS, *i.e.* an unperturbed BAS, while DoD = 1 (ion-pair complex) implies full deprotonation of the BAS and thus formation of a protonated water cluster, see Fig. 7.

Table 2 shows DoD values and energies for adsorption at all framework positions. For comparison, PBE+D2 results are also shown. For further details, see Section S1.4 of the ESI.† For a loading of 1 H<sub>2</sub>O/BAS, structures optimised at the MP2 level do not indicate deprotonation of the BAS. The DoD values are between 0.03–0.10 for interaction motif B at the different framework positions. In contrast, for 3 H<sub>2</sub>O/BAS, DoD values between 0.91–0.97 indicate full deprotonation of the BAS for all adsorption sites (motif BHH), see Table S31 in the ESI.† For 2 H<sub>2</sub>O/BAS, interaction motif BH, MP2+ACC predicts both neutral complex structures and ion-pair structures. With MP2+ACC these have similar stabilities.

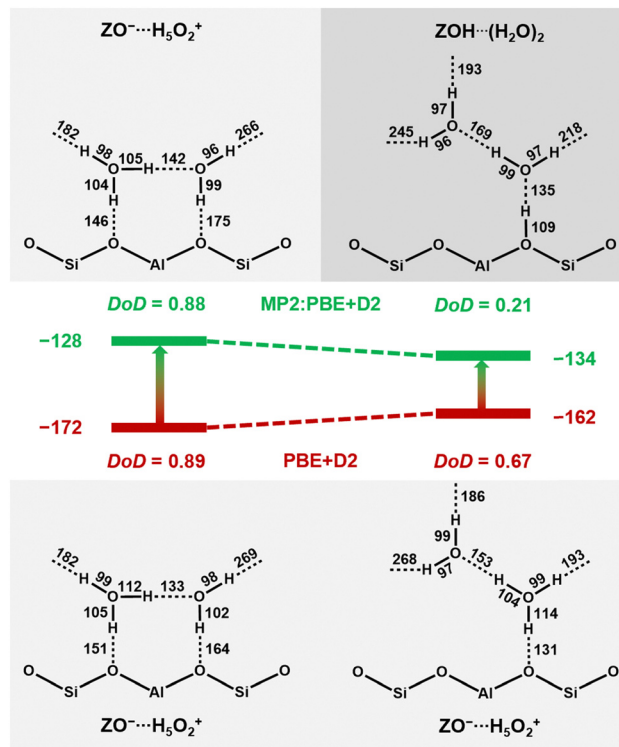


Fig. 8 Ion-pair complex,  $\text{ZO}^-\cdots\text{H}_5\text{O}_2^+$ , and neutral complex,  $\text{ZOH}\cdots(\text{H}_2\text{O})_2$ , for adsorption motif BH at T7 as obtained via structure optimisation with PBE+D2 (bottom) and MP2 (top), see Table 2. DoD defined in eqn (1). The middle part shows MP2+ACC adsorption energies in  $\text{kJ mol}^{-1}$ .

As an illustrative example, Fig. 8 shows the respective structures at T7. With MP2+ACC, the neutral complex,  $\text{ZOH}\cdots\text{H}_4\text{O}_2$ , is 6  $\text{kJ mol}^{-1}$  more stable than the ion-pair structure,  $\text{ZO}^-\cdots\text{H}_5\text{O}_2^+$ , whereas with PBE+D2 the ion-pair complex is 10  $\text{kJ mol}^{-1}$  more stable than the neutral complex. The difference between MP2+ACC and PBE+D2 adsorption energies is 44  $\text{kJ mol}^{-1}$  for the ion-pair, but only 28  $\text{kJ mol}^{-1}$  for the neutral complex. This is a clear manifestation of the overstabilisation of polar structures with GGA-type functionals due to the self-interaction error.

At the PBE+D2 potential energy surface, the O–H bonds are stretched too much and the proton of the zeolitic OH group moves to the adsorbed water dimer, resulting in a DoD of 0.67 instead of 0.21. This means that the isomer which was a neutral

**Table 2** Adsorption energies ( $E_{\text{ads}}$ ) in  $\text{kJ mol}^{-1}$  and degrees of deprotonation (DoD) for the respective most stable conformers of the ion-pair complex ( $\text{ZO}^-\cdots\text{H}_5\text{O}_2^+$ ) and neutral complex ( $\text{ZOH}\cdots\text{H}_4\text{O}_2$ ) for 2 H<sub>2</sub>O/BAS (motif BH) as obtained with PBE+D2 and MP2+ACC (MP2+ACC energies on MP2 structures)

	PBE+D2		PBE+D2		MP2+ACC		MP2	
	$E_{\text{ads}}$		DoD		$E_{\text{ads}}$		DoD	
	$\text{ZO}^-\cdots\text{H}_5\text{O}_2^+$	$\text{ZOH}\cdots\text{H}_4\text{O}_2$	$\text{ZO}^-\cdots\text{H}_5\text{O}_2^+$	$\text{ZOH}\cdots\text{H}_4\text{O}_2$	$\text{ZO}^-\cdots\text{H}_5\text{O}_2^+$	$\text{ZOH}\cdots\text{H}_4\text{O}_2$	$\text{ZO}^-\cdots\text{H}_5\text{O}_2^+$	$\text{ZOH}\cdots\text{H}_4\text{O}_2$
T2	−162	−141	0.95	0.58	−123	−125	0.92	0.14
T3	−177	−168	0.94	0.48	−139	−137	0.92	0.19
T6	−163	−141	0.92	0.37	−124	−121	0.91	0.14
T7	−172	−162	0.89	0.67	−128	−134	0.88	0.21
T11	−162	−138	0.82	0.27	−112	−113	0.82	0.08
T12	−182	−161	0.92	0.30	−136	−133	0.91	0.14



**Table 3** Electronic adsorption energies ( $E_{\text{ads}}$ ) in  $\text{kJ mol}^{-1}$  as obtained with PBE+D2 and MP2+ $\Delta\text{ACC}$  for BAS at different framework positions

BAS		1 H <sub>2</sub> O/BAS		2 H <sub>2</sub> O/BAS			3 H <sub>2</sub> O/BAS			
		B	L <sup>a</sup>	BH	BL <sup>b</sup>	LH	BHH	LHH	BHL	BLH
T2 <sup>c</sup>	PBE+D2	−70	−70	−162	−128	−147	−245	−207	−205	−205
	MP2+ $\Delta\text{ACC}^d$	−64	−67	−123	−116	−133	−198	−181	−178	−183
T3 <sup>c</sup>	PBE+D2	−90	−29	−177	−139	—	−246	—	—	—
	MP2+ $\Delta\text{ACC}^d$	−74	−25	−139	−110	—	−191	—	—	—
T6 <sup>c</sup>	PBE+D2	−72	−69	−163	−128	−146	−240	−205	−196	−200
	MP2+ $\Delta\text{ACC}^d$	−67	−64	−124	−123	−133	−197	−176	−167	−179
T7 <sup>c</sup>	PBE+D2	−88	−69	−172	−145	−132	−250	−202	−210	−198
	MP2+ $\Delta\text{ACC}^d$	−74	−63	−128	−128	−119	−201	−174	−177	−174
T11 <sup>c</sup>	PBE+D2	−97	−73	−162	−149	−134	−234	−201	−204	−210
	MP2+ $\Delta\text{ACC}^d$	−72	−63	−112	−125	−112	−181	−166	−166	−176
T12 <sup>c</sup>	PBE+D2	−94	−55	−182	−130	—	−259	—	−215	—
	MP2+ $\Delta\text{ACC}^d$	−79	−45	−136	−108	—	−207	—	−177	—

<sup>a</sup> L<sup>syn</sup> for T3. <sup>b</sup> BL<sup>syn</sup> for T3. <sup>c</sup> Al position, see Table 1. <sup>d</sup> MP2 structure optimisation.

complex on the MP2 potential energy surface becomes a second ion-pair structure at the PBE+D2 surface. For the ion-pair structures with similar DoD for both methods (left side of Fig. 8), the O–H bonds are much more stretched on H-bond formation. For example, the O–H bond involving the shared proton of the adsorbed protonated water dimer is much longer with PBE+D2 (112 pm) than with MP2 (105 pm). Both for the relative stabilities and O–H bond lengths, the results for other framework positions are similar to those for T7, see Table 2. Further, Table 2 shows that PBE+D2 artificially predicts ambiguous protonation states ( $0.27 < \text{DoD} < 0.67$ ) for all framework positions.

### 3.4. MP2+ $\Delta\text{ACC}$ adsorption energies compared to PBE+D2 results

Table 3 shows the MP2+ $\Delta\text{ACC}$  adsorption energies for the most stable conformers and compares them with PBE+D2 results. For each interaction motif, Fig. 9 shows the adsorption

structure at the T-site at which this motif is most stable as predicted by MP2+ $\Delta\text{ACC}$ .

The  $\Delta\text{ACC}$  corrections (CCSD(T) – MP2 differences) are much smaller than the  $\Delta\text{MP2}$  corrections (MP2–PBE+D2 differences), with maximum absolute values of 6 and 50  $\text{kJ mol}^{-1}$ , respectively, see Tables S34 and S35 in the ESI.† While the MP2 corrections are always positive, *i.e.* destabilising, the CCSD(T) corrections can be positive or negative. For most interaction motifs, the  $\Delta\text{ACC}$  corrections are negligible. Only for motifs BH and BHH, they are between 2–6  $\text{kJ mol}^{-1}$ . We conclude that adding the MP2 correction to PBE+D2 is already enough to reach chemical accuracy in most cases.

Fig. 10 shows the variation of MP2+ $\Delta\text{ACC}$  adsorption energies for motifs B and L across different framework positions compared to PBE+D2. For motif B, the range of adsorption energies for the different T-sites extends over 15  $\text{kJ mol}^{-1}$  with MP2+ $\Delta\text{ACC}$ , but over 24  $\text{kJ mol}^{-1}$  with PBE+D2, see Table 3 and Fig. 10. This shows that PBE+D2 not only overestimates



**Fig. 9** Most stable adsorption structures for each interaction motif. Framework position and MP2+ $\Delta\text{ACC}$  adsorption energies in  $\text{kJ mol}^{-1}$  in parenthesis. Colour code: aluminium – green, framework oxygen accepting hydrogen bond – red, oxygen in water molecules – blue, framework silicon and oxygen – grey, hydrogen – white.





Fig. 10 PBE+D2 and MP2+ $\Delta$ CC adsorption energies (black bars) for motifs B and L at different framework positions, see also Table 3. Arrows indicate the PBE+D2 error.

water adsorption strengths but also artificially amplifies differences between the framework positions. For T6 and T2, the differences between PBE+D2 and MP2+ $\Delta$ CC are  $-5$  and  $-6$   $\text{kJ mol}^{-1}$ , respectively, whereas they are  $-14$ ,  $-15$ , and  $-16$   $\text{kJ mol}^{-1}$  for T7, T12, and T3, respectively, and  $-25$   $\text{kJ mol}^{-1}$  for T11. The large error for T11 changes the sequence of adsorption strengths of the different T-sites, from  $\text{T12} > \text{T3} \approx \text{T7} > \text{T11}$  with MP2+ $\Delta$ CC to  $\text{T11} > \text{T12} > \text{T3} > \text{T7}$  with PBE+D2.

For motif L, the MP2+ $\Delta$ CC energies for adsorption on T2, T6, T7, and T11 are in a narrow range between  $-67$  and  $-63$   $\text{kJ mol}^{-1}$ , whereas for adsorption on T12 and T3 they are significantly less exoenergetic,  $-45$  and  $-25$   $\text{kJ mol}^{-1}$ , respectively. At the latter framework positions, the  $\text{AlO}_4$  Lewis-site lies in a small, sterically less accessible cage which can accommodate water only under destabilising framework distortions or in the unfavourable *syn*-position, see Fig. 1. For T6 and T2, the adsorption energies for motif L are comparable with those of motif B within  $\pm 3$   $\text{kJ mol}^{-1}$ , but these are the sites which are least exoenergetic for motif B,  $-67$  and  $-64$   $\text{kJ mol}^{-1}$ , respectively. Hence, only for H-MFI samples with Al in T6 and T2, a partial population of L-type adsorption structures can be expected, and only after the BAS at all other T-sites have been populated, if energetically favoured, even with more than one water molecule. Similarly to motif B, PBE+D2 overestimates the water adsorption strengths compared to MP2+ $\Delta$ CC. For motif L, however, the errors are much smaller, between 3 and 10  $\text{kJ mol}^{-1}$ . The PBE+D2 energies for adsorption on T6 and T2 remain comparable with those of motif B within  $\pm 3$   $\text{kJ mol}^{-1}$ .

For 2  $\text{H}_2\text{O}/\text{BAS}$ , interaction motif BH, Fig. 11 shows the PBE+D2 adsorption energy errors with respect to MP2+ $\Delta$ CC for Al in different T-sites. Due to the self-interaction error, they are significantly larger for the ion-pair complex, 38–50  $\text{kJ mol}^{-1}$ , than for the neutral complex, 16–31  $\text{kJ mol}^{-1}$ , see also Table 2. While MP2+ $\Delta$ CC predicts similar stability of ion-pair complex and neutral complex, PBE+D2 erroneously favours the ion-pair complex.

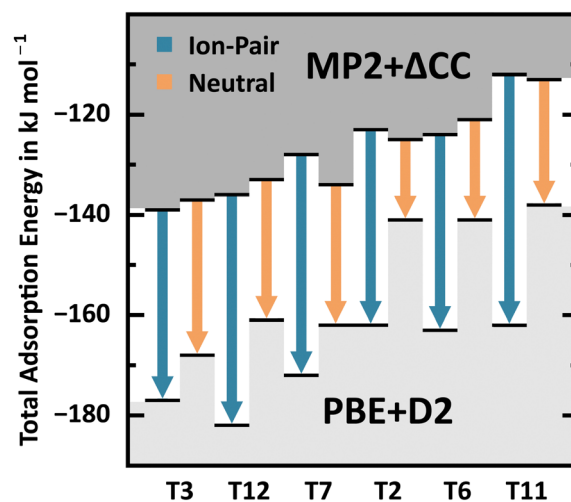


Fig. 11 PBE+D2 and MP2+ $\Delta$ CC adsorption energies (black bars) for ion-pair complex and neutral complex for BAS at different T-sites, see also Table 2. Arrows indicate the PBE+D2 error.

With regard to the different interaction motifs for 2  $\text{H}_2\text{O}/\text{BAS}$ , with MP2+ $\Delta$ CC BH is favoured for T3, T7, and T12, whereas BL is favoured for T11 and LH is favoured for T2 and T6. Conversely, PBE+D2 clearly favours motif BH for all framework positions, predicting the formation of an ion-pair complex, *i.e.* complete deprotonation of the BAS. This shows that PBE+D2 seriously overestimates the stability of the ion-pair complex, see also Table 2. Overall, the range of adsorption energies for BH, BL, and LH is much narrower with MP2+ $\Delta$ CC ( $-108$  to  $-139$   $\text{kJ mol}^{-1}$ ) than with PBE+D2 ( $-128$  to  $-182$   $\text{kJ mol}^{-1}$ ). Not only does PBE+D2 show errors as large as 50  $\text{kJ mol}^{-1}$ , but these errors are also not consistent. Errors for the different stationary points vary between 5 and 50  $\text{kJ mol}^{-1}$ . In addition, the nature of stationary points (neutral complex *vs.* ion-pair structure) may change.

For 3  $\text{H}_2\text{O}/\text{BAS}$ , both MP2+ $\Delta$ CC and PBE+D2 favour interaction motif BHH. For all interaction motifs with 3  $\text{H}_2\text{O}/\text{BAS}$  at all T-sites, the PBE+D2 errors with respect to MP2+ $\Delta$ CC vary between 21–55  $\text{kJ mol}^{-1}$ . While Lewis-type approach of water molecules to the aluminium atom of the  $\text{AlO}_4$  tetrahedron may be relevant for loading 1–2  $\text{H}_2\text{O}/\text{BAS}$ , the formation of protonated water clusters for the BHH motif offers a much higher stabilisation at loading 3  $\text{H}_2\text{O}/\text{BAS}$ . We expect a preference for protonated water clusters also at loadings larger than 3  $\text{H}_2\text{O}/\text{BAS}$ .

Since the revPBE functional<sup>33</sup> augmented with the D3 dispersion term<sup>34</sup> is widely used for simulating water,<sup>97</sup> we test it for water adsorption in H-MFI, comparing to our benchmark MP2 structures and MP2+ $\Delta$ CC energies, see Section S1.6 of the ESI†. We find that revPBE+D3 performs much better than PBE+D2 – both for structures and energies. Thus, it may be worth considering in future studies on the type of systems considered here.

### 3.5. Comparison with experiment

Table 4 shows MP2+ $\Delta$ CC and PBE+D2 adsorption enthalpies at 298 K, see Section S2.4 of the ESI† for the individual contributions. They are based on the electronic adsorption energies shown in Table 3 and include PBE+D2-quality zero-point





**Table 4** Adsorption enthalpies ( $H_{\text{ads}}$ ) at 298 K in  $\text{kJ mol}^{-1}$  as obtained with PBE+D2 and MP2+ $\Delta\text{ACC}$  for BAS at different framework positions. Experimental adsorption enthalpies from microcalorimetry<sup>3</sup>

BAS		1 H <sub>2</sub> O/BAS		2 H <sub>2</sub> O/BAS			3 H <sub>2</sub> O/BAS			
		B	L <sup>a</sup>	BH	BL <sup>b</sup>	LH	BHH	LHH	BHL	BLH
T2 <sup>c</sup>	PBE+D2	−63	−63	−155	−115	−134	−228	−187	−188	−185
	MP2+ $\Delta\text{ACC}$ <sup>d</sup>	−57	−60	−116	−102	−119	−181	−162	−161	−163
T3 <sup>c</sup>	PBE+D2	−86	−22	−166	−129	—	−233	—	—	—
	MP2+ $\Delta\text{ACC}$ <sup>d</sup>	−70	−18	−129	−101	—	−178	—	—	—
T6 <sup>c</sup>	PBE+D2	−65	−62	−155	−115	−133	−221	−185	−179	−179
	MP2+ $\Delta\text{ACC}$ <sup>d</sup>	−61	−57	−116	−109	−120	−178	−156	−151	−158
T7 <sup>c</sup>	PBE+D2	−87	−64	−168	−132	−120	−235	−184	−196	−179
	MP2+ $\Delta\text{ACC}$ <sup>d</sup>	−73	−58	−124	−116	−108	−186	−157	−163	−156
T11 <sup>c</sup>	PBE+D2	−93	−65	−155	−136	−122	−221	−186	−189	−189
	MP2+ $\Delta\text{ACC}$ <sup>d</sup>	−69	−55	−105	−112	−101	−168	−151	−151	−155
T12 <sup>c</sup>	PBE+D2	−91	−47	−172	−117	—	−243	—	−198	—
	MP2+ $\Delta\text{ACC}$ <sup>d</sup>	−76	−37	−127	−96	—	−191	—	−160	—
Min/Max	MP2+ $\Delta\text{ACC}$ <sup>d</sup>	−60/−76		−112/−129			−168/−191			
	Per molecule	−60/−76		−56/−65			−56/−64			
Exp. <sup>e</sup>	Integral	−70.2 ± 0.5		−148.8 ± 1.4			−209.0 ± 6.2			
	Per molecule	−70.2 ± 0.5		−74.4 ± 0.7			−69.7 ± 2.1			

<sup>a</sup> L<sup>syn</sup> for T3. <sup>b</sup> BL<sup>syn</sup> for T3. <sup>c</sup> Al position, see Table 1. <sup>d</sup> MP2 structure optimization. <sup>e</sup> Ref. 3, see Section S4 of the ESI.

vibrational energies and thermal contributions obtained from vibrational partition functions. We always assume a homogeneous distribution of water molecules over the available adsorption sites, *i.e.* for a global loading of 1 H<sub>2</sub>O/BAS we assume that each BAS is occupied with one H<sub>2</sub>O molecule. In Section S5 of the ESI† we show that taking into account heterogeneous distributions,<sup>29</sup> for example with half of the BAS unoccupied and half of them occupied with 2 H<sub>2</sub>O/BAS, does not change the predicted heats of adsorption.

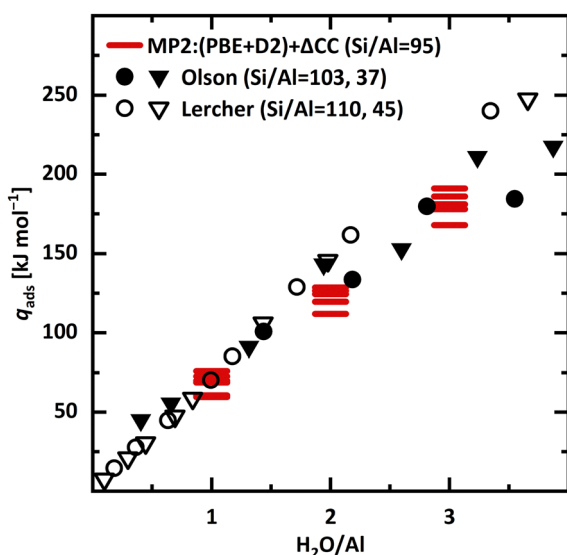
Fig. 12 compares our MP2+ $\Delta\text{ACC}$  adsorption enthalpies calculated for BAS in different framework positions with

calorimetrically measured integral heats of adsorption reported by Liu, Lercher, and co-workers,<sup>3</sup> see ESI,† Section S4, as well as with data derived from isotherm measurements of Olson, Haag, and Borghard.<sup>38</sup> Comparison between theory and experiment is complicated by the fact that, for a given H-MFI sample, the distribution of Al and hence the BAS over different framework positions is largely unknown.<sup>89–91</sup>

For 1 H<sub>2</sub>O/BAS, the MP2+ $\Delta\text{ACC}$  predictions for the adsorption heats at different sites vary over 16  $\text{kJ mol}^{-1}$ . For T3, T7, and T11, the predictions (70, 73, and 69  $\text{kJ mol}^{-1}$ , respectively) agree with experiment<sup>3</sup> ( $70.2 \pm 0.5 \text{ kJ mol}^{-1}$ , see ESI,† Section S4) within chemical accuracy limits ( $\pm 4 \text{ kJ mol}^{-1}$ ). For T2 and T6, the predicted heats (60 and 61  $\text{kJ mol}^{-1}$ , respectively) are about 10  $\text{kJ mol}^{-1}$  lower and for T12 (76  $\text{kJ mol}^{-1}$ ) 6  $\text{kJ mol}^{-1}$  higher than experiment. For loadings  $\leq 1.5 \text{ H}_2\text{O/BAS}$ , the calorimetric heats<sup>3</sup> coincide with the ones derived from isotherms.<sup>38</sup>

For 2 and 3 H<sub>2</sub>O/BAS, the predicted heats (Table 4) are 20 to 37 and 18 to 41  $\text{kJ mol}^{-1}$ , respectively, lower than the calorimetric values<sup>3</sup> of  $149 \pm 1$  and  $209 \pm 6 \text{ kJ mol}^{-1}$ , respectively, see ESI,† Section S4. Per molecule, they are 10 to 18 and 6 to 14  $\text{kJ mol}^{-1}$ , respectively, lower. Whereas for 1 H<sub>2</sub>O/BAS we find good agreement with experiment, for 2 and 3 H<sub>2</sub>O/BAS the predicted heats are significantly lower (6 to 18  $\text{kJ mol}^{-1}$  per H<sub>2</sub>O molecule) than the ones obtained by calorimetry.<sup>3</sup> Our predictions are in better agreement with the lower values from isotherm measurements<sup>38</sup> than with the calorimetric values.<sup>3</sup> The latter, however, are expected to be potentially more accurate.

One possible reason for that we find good agreement with experiment for 1 H<sub>2</sub>O/BAS, but significantly lower heats of adsorption for 2 and 3 H<sub>2</sub>O/BAS could be that we did not find the most stable conformers of the adsorbed water molecules yet, which is less unlikely for adsorption of more than one water molecule per BAS. Another possibility is that BAS at other framework positions which we did not investigate may adsorb water more strongly. However, this is not very likely as a PBE+D3 study of methanol adsorption on BAS in all T-site



**Fig. 12** Experimental integral heats of adsorption ( $q_{\text{ads}}$ ) as reported by Liu, Lercher and co-workers<sup>3</sup> (calorimetry, empty symbols) as well as Olson, Haag, and Borghard<sup>38</sup> (isotherms, full symbols). For both, two samples with different Si/Al ratio are included. MP2+ $\Delta\text{ACC}$  adsorption enthalpies (absolute values) for all six framework positions (red bars). The respective most stable adsorption motif is chosen, see Table 4.



positions shows.<sup>98</sup> It identified T12 and T7 as strongest adsorption sites,<sup>98</sup> but found BAS at T10 and T4 which we did not consider about equally stable.

A more likely reason for our underestimation of the heats of adsorption for 2 and 3 H<sub>2</sub>O/BAS is that we have only considered isolated BAS. We have shown that larger water clusters can form H-bonds to framework oxygen atoms that are farther away from the active sites. If in such a position, *e.g.* across a channel or ring, another spatially proximate BAS was present, cooperativity between active sites could lead to a more exothermic water adsorption once a threshold loading is reached. Water adsorption at two BAS in spatial proximity is beyond the scope of this study and may be subject of future work.

## 4. Conclusions

For loading 1 H<sub>2</sub>O/BAS, the Brønsted-type approach is clearly favoured for most framework positions, but for some sites (T2, T6) very similar water adsorption energies are obtained for the Lewis-type approach. This highlights the relevance of this approach to BAS, *e.g.* for dealumination.<sup>99</sup>

For 1 H<sub>2</sub>O/BAS we reach agreement within chemical accuracy limits ( $\pm 4$  kJ mol<sup>-1</sup>) between our MP2+ $\Delta$ CC results for isolated BAS and experimental heats of adsorption.<sup>3,38</sup> This shows that our method yields chemically accurate results and that our model (ideal, isolated active sites) accurately describes the experimental situation. This makes it possible to add the results for 1 H<sub>2</sub>O/BAS at T3 (intersection) and T7 (zig-zag channel) sites of H-MFI to our set of reference data for testing quantum chemical methods for molecule-surface interactions.<sup>17,47,51</sup> For loadings of 2 and 3 H<sub>2</sub>O/BAS, our MP2+ $\Delta$ CC predictions for ideal, isolated BAS are 6 to 18 kJ mol<sup>-1</sup> per H<sub>2</sub>O molecule lower than the experimental heats of adsorption.<sup>3</sup> This calls for a more thorough exploration of the conformational space using molecular dynamics or global optimisation methods as well as for the consideration of additional T-sites and pairs of sites<sup>100</sup> in future studies.

Comparison of PBE+D2 results with MP2 structures and MP2+ $\Delta$ CC energies provides further evidence that GGA-level exchange-correlation functionals in general, and PBE+D2 in particular, are unable to accurately describe H-bonded systems. The covalent O-H donor bonds are too much stretched (Fig. 6) and the degree of deprotonation is too high. The PBE+D2 adsorption energies are too binding and – even more critical – the error varies strongly between the different T-sites (Fig. 10) and different types of local minima (Fig. 11). The stability of the Brønsted-type approach compared to the Lewis-type approach is overestimated and ionic adsorption structures are overly stabilised.

This creates a dilemma for global sampling studies.<sup>101</sup> Millions of points on the potential energy surface need to be calculated, and, therefore, many studies still rely on force fields. When DFT is used, GGA-type functionals such as PBE are the only ones affordable, see ref. 32, 41 and 100, for water-zeolite interactions. To close this gap, machine learning interatomic potentials (MLIP) hold promise,<sup>100,102,103</sup> but they

inherit all the limitations of the functionals on which they are parameterised. We have shown that GGA-functionals, and MLIPs parametrised on them, will not be able to reliably describe water-zeolite interactions, in particular not those which involve proton transfer. MLIPs based on MP2 data seem within reach now at least when very efficient periodic MP2 codes are used.<sup>104</sup> With the MP2 code<sup>81</sup> we have used for the cluster models, the computational cost per structure optimisation step is only four times higher for MP2 than for PBE+D2. In any case, the MP2 structures and MP2+ $\Delta$ CC energies presented here will be useful benchmarks for MLIPs at the MP2 level. Availability of such MLIPs would also allow to expand the scope of water-zeolite studies to models that take site-site interactions and site heterogeneity into account. Moreover, the full range of water loading up to completely filled water pores could be studied and all this for different framework structures.

## Author contributions

H. Windeck: conceptualisation, writing – original draft, writing – review and editing, data curation, formal analysis, investigation, methodology, validation, visualisation, funding acquisition. F. Berger: conceptualisation, writing – review and editing, formal analysis, methodology, validation, supervision, funding acquisition. J. Sauer: conceptualisation, writing – original draft, writing – review and editing, formal analysis, supervision, funding acquisition, project administration, resources.

## Data availability

The data supporting this article, *x,y,z* coordinates and absolute energies of the MP2:PBE+D2 optimised structures as well as example inputs have been included as part of the ESI.†

## Conflicts of interest

The authors declare no conflict of interest.

## Acknowledgements

Dedicated to the memory of Petr Nachtigall, Prague, who prematurely passed away on December 28, 2022. We thank Dr Yue Liu and Prof. Johannes Lercher for providing the original data from ref. 3. We also acknowledge the late Prof. Petr Nachtigall (Prague) and his group for discussions. This work has been funded by the Deutsche Forschungsgemeinschaft (DFG, German Research Foundation) – 514934444 and by the Charles University Centre of Advanced Materials (CUCAM, OPVVV Excellent Research Teams, project number CZ.02.1.01/0.0/0.0/15\_003/0000417). Support by the Fonds der Chemischen Industrie is also acknowledged. H. W. is a member of the International Max Planck Research School for Elementary Processes in Physical Chemistry and holds a Kekulé fellowship of the Fonds der Chemischen Industrie. F. B. is indebted to the German Academic Scholarship Foundation for a PhD



fellowship, to the Alexander von Humboldt Foundation for a Feodor Lynen Research Fellowship, to the Isaac Newton Trust for an Early Career Fellowship, and to Churchill College, Cambridge, for a Postdoctoral By-Fellowship. The North German Supercomputing Alliance (HLRN) is acknowledged for computer time (grant bec00241).

## References

- 1 P. del Campo, C. Martínez and A. Corma, *Chem. Soc. Rev.*, 2021, **50**, 8511–8595.
- 2 M. Wang, N. R. Jaegers, M.-S. Lee, C. Wan, J. Z. Hu, H. Shi, D. Mei, S. D. Burton, D. M. Camaioni, O. Y. Gutiérrez, V.-A. Glezakou, R. Rousseau, Y. Wang and J. A. Lercher, *J. Am. Chem. Soc.*, 2019, **141**, 3444–3455.
- 3 S. Eckstein, P. H. Hintermeier, R. Zhao, E. Baráth, H. Shi, Y. Liu and J. A. Lercher, *Angew. Chem., Int. Ed.*, 2019, **58**, 3450–3455.
- 4 J. S. Bates, B. C. Bukowski, J. Greeley and R. Gounder, *Chem. Sci.*, 2020, **11**, 7102–7122.
- 5 D. Mei and J. A. Lercher, *J. Phys. Chem. C*, 2019, **123**, 25255–25266.
- 6 K. De Wispelaere, C. S. Wondergem, B. Ensing, K. Hemelsoet, E. J. Meijer, B. M. Weckhuysen, V. Van Speybroeck and J. Ruiz-Martínez, *ACS Catal.*, 2016, **6**, 1991–2002.
- 7 C. Wang, M. Zheng, M. Hu, W. Cai, Y. Chu, Q. Wang, J. Xu and F. Deng, *J. Am. Chem. Soc.*, 2024, **146**, 8688–8696.
- 8 J. Sauer, in *Handbook of Hydrogen Transfer*, ed. R. L. Schowen, J. P. Klinman, J. T. Hynes and H.-H. Limbach, Wiley-VCH, Weinheim, 2006, vol. 2, pp. 685–707.
- 9 D. E. Resasco, S. P. Crossley, B. Wang and J. L. White, *Catal. Rev.*, 2021, **63**, 302–362.
- 10 W. J. Mortier, J. Sauer, J. A. Lercher and H. Noller, *J. Phys. Chem.*, 1984, **88**, 905–912.
- 11 M. Krossner and J. Sauer, *J. Phys. Chem.*, 1996, **100**, 6199–6211.
- 12 S. A. Zygmunt, L. A. Curtiss, L. E. Iton and M. K. Erhardt, *J. Phys. Chem.*, 1996, **100**, 6663–6671.
- 13 E. Nusterer, P. E. Blöchl and K. Schwarz, *Chem. Phys. Lett.*, 1996, **253**, 448–455.
- 14 M.-C. Silaghi, C. Chizallet, E. Petracovski, T. Kerber, J. Sauer and P. Raybaud, *ACS Catal.*, 2015, **5**, 11–15.
- 15 J. P. Perdew, K. Burke and M. Ernzerhof, *Phys. Rev. Lett.*, 1996, **77**, 3865–3868.
- 16 L. Li and K. Burke, in *Handbook of Materials Modeling: Methods: Theory and Modeling*, ed. W. Andreoni and S. Yip, Springer International Publishing, Cham, 2020, pp. 213–226, DOI: [10.1007/978-3-319-44677-6\\_11](https://doi.org/10.1007/978-3-319-44677-6_11).
- 17 J. Sauer, *Acc. Chem. Res.*, 2019, **52**, 3502–3510.
- 18 J. A. Pople, *Angew. Chem., Int. Ed.*, 1999, **38**, 1894–1902.
- 19 M. Urban, J. Noga, S. J. Cole and R. J. Bartlett, *J. Chem. Phys.*, 1985, **83**, 4041–4046.
- 20 K. Raghavachari, G. W. Trucks, J. A. Pople and M. Head-Gordon, *Chem. Phys. Lett.*, 1989, **157**, 479–483.
- 21 A. Jentys, G. Warecka, M. Derewinski and J. A. Lercher, *J. Phys. Chem.*, 1989, **93**, 4837–4843.
- 22 F. Wakabayashi, J. N. Kondo, K. Domen and C. Hirose, *J. Phys. Chem.*, 1996, **100**, 1442–1444.
- 23 V. V. Mihaleva, R. A. van Santen and A. P. J. Jansen, *J. Chem. Phys.*, 2004, **120**, 9212–9221.
- 24 H. Jobic, A. Tuel, M. Krossner and J. Sauer, *J. Phys. Chem.*, 1996, **100**, 19545–19550.
- 25 J. Sauer, *Science*, 1996, **271**, 774–775.
- 26 L. Smith, A. K. Cheetham, R. E. Morris, L. Marchese, J. M. Thomas, P. A. Wright and J. Chen, *Science*, 1996, **271**, 799–802.
- 27 V. Termath, F. Haase, J. Sauer, J. Hutter and M. Parrinello, *J. Am. Chem. Soc.*, 1998, **120**, 8512–8516.
- 28 Y. Jeanvoine, J. G. Angyan, G. Kresse and J. Hafner, *J. Phys. Chem. B*, 1998, **102**, 7307–7310.
- 29 M. V. Vener, X. Rozanska and J. Sauer, *Phys. Chem. Chem. Phys.*, 2009, **11**, 1702–1712.
- 30 W. Reschetilowski and W. Hönle, *On Catalysis*, VWB, Verlag für Wiss. und Bildung, 2010.
- 31 S. Grimme, *J. Comput. Chem.*, 2006, **27**, 1787–1799.
- 32 E. Grifoni, G. Piccini, J. A. Lercher, V.-A. Glezakou, R. Rousseau and M. Parrinello, *Nat. Commun.*, 2021, **12**, 2630.
- 33 Y. Zhang and W. Yang, *Phys. Rev. Lett.*, 1998, **80**, 890.
- 34 S. Grimme, J. Antony, S. Ehrlich and H. Krieg, *J. Chem. Phys.*, 2010, **132**, 154104.
- 35 J. H. Hack, J. P. Dombrowski, X. Ma, Y. Chen, N. H. C. Lewis, W. B. Carpenter, C. Li, G. A. Voth, H. H. Kung and A. Tokmakoff, *J. Am. Chem. Soc.*, 2021, **143**, 10203–10213.
- 36 J. H. Hack, X. Ma, Y. Chen, J. P. Dombrowski, N. H. C. Lewis, C. Li, H. H. Kung, G. A. Voth and A. Tokmakoff, *J. Phys. Chem. C*, 2023, **127**, 16175–16186.
- 37 F. Haase and J. Sauer, *J. Phys. Chem.*, 1994, **98**, 3083–3085.
- 38 D. H. Olson, W. O. Haag and W. S. Borghard, *Microporous Mesoporous Mater.*, 2000, **35–36**, 435–446.
- 39 V. Bolis, C. Busco and P. Ugliengo, *J. Phys. Chem. B*, 2006, **110**, 14849–14859.
- 40 K. L. Joshi, G. Psofogiannakis, A. C. T. van Duin and S. Raman, *Phys. Chem. Chem. Phys.*, 2014, **16**, 18433–18441.
- 41 P. Liu and D. Mei, *J. Phys. Chem. C*, 2020, **124**, 22568–22576.
- 42 K. Stanciakova, B. Ensing, F. Göttl, R. E. Buló and B. M. Weckhuysen, *ACS Catal.*, 2019, **9**, 5119–5135.
- 43 D. Mei and J. A. Lercher, *AIChE J.*, 2017, **63**, 172–184.
- 44 J. P. Perdew and K. Schmidt, *AIP Conf. Proc.*, 2001, **577**, 1–20.
- 45 G. Piccini, M. Alessio, J. Sauer, Y. Zhi, Y. Liu, R. Kolvenbach, A. Jentys and J. A. Lercher, *J. Phys. Chem. C*, 2015, **119**, 6128–6137.
- 46 T. J. Goncalves, P. N. Plessow and F. Studt, *ChemCatChem*, 2019, **11**, 4368–4376.
- 47 Q. Ren, M. Rybicki and J. Sauer, *J. Phys. Chem. C*, 2020, **124**, 10067–10078.
- 48 F. R. Rehak, G. Piccini, M. Alessio and J. Sauer, *Phys. Chem. Chem. Phys.*, 2020, **22**, 7577–7585.
- 49 F. Berger, M. Rybicki and J. Sauer, *J. Catal.*, 2021, **395**, 117–128.



- 50 K. Stanciakova, J. N. Louwen, B. M. Weckhuysen, R. E. Bulo and F. Göltl, *J. Phys. Chem. C*, 2021, **125**, 20261–20274.
- 51 F. Berger, M. Rybicki and J. Sauer, *ACS Catal.*, 2023, **13**, 2011–2024.
- 52 C. Tuma and J. Sauer, *Chem. Phys. Lett.*, 2004, **387**, 388–394.
- 53 G. Piccini, M. Alessio and J. Sauer, *Phys. Chem. Chem. Phys.*, 2018, **20**, 19964–19970.
- 54 H. Windeck, F. Berger and J. Sauer, *Angew. Chem., Int. Ed.*, 2023, **62**, e202303204.
- 55 J. Sauer, P. Ugliengo, E. Garrone and V. R. Saunders, *Chem. Rev.*, 1994, **94**, 2095–2160.
- 56 F. Berger and J. Sauer, *Angew. Chem., Int. Ed.*, 2021, **60**, 3529–3533.
- 57 Y. Xue, T. M. Sexton, J. Yang and G. S. Tschumper, *Phys. Chem. Chem. Phys.*, 2024, **26**, 12483–12494.
- 58 J. A. Pople, J. S. Binkley and R. Seeger, *Int. J. Quantum Chem.*, 1976, **10**, 1–19.
- 59 M. Alessio, D. Usvyat and J. Sauer, *J. Chem. Theory Comput.*, 2019, **15**, 1329–1344.
- 60 A. D. Becke, *J. Chem. Phys.*, 1993, **98**, 5648–5652.
- 61 C. Lee, W. Yang and R. G. Parr, *Phys. Rev. B: Condens. Matter Mater. Phys.*, 1988, **37**, 785–789.
- 62 T. Kerber, M. Sierka and J. Sauer, *J. Comput. Chem.*, 2008, **29**, 2088–2097.
- 63 G. Kresse and J. Furthmüller, *Comput. Mater. Sci.*, 1996, **6**, 15–50.
- 64 G. Kresse and J. Furthmüller, *Phys. Rev. B: Condens. Matter Mater. Phys.*, 1996, **54**, 11169–11186.
- 65 G. Kresse and J. Hafner, *Phys. Rev. B: Condens. Matter Mater. Phys.*, 1993, **47**, 558–561.
- 66 G. Kresse and D. Joubert, *Phys. Rev. B: Condens. Matter Mater. Phys.*, 1999, **59**, 1758–1775.
- 67 M. Rybicki and J. Sauer, *J. Am. Chem. Soc.*, 2018, **140**, 18151–18161.
- 68 A. Hoffman, M. DeLuca and D. Hibbitts, *J. Phys. Chem. C*, 2019, **123**, 6572–6585.
- 69 U. Eichler, C. M. Kölmel and J. Sauer, *J. Comput. Chem.*, 1997, **18**, 463–477.
- 70 M. Sierka and J. Sauer, *J. Chem. Phys.*, 2000, **112**, 6983–6996.
- 71 C. Möller and M. S. Plesset, *Phys. Rev.*, 1934, **46**, 618–622.
- 72 C. Tuma and J. Sauer, *Phys. Chem. Chem. Phys.*, 2006, **8**, 3955–3965.
- 73 M. Alessio, F. A. Bischoff and J. Sauer, *Phys. Chem. Chem. Phys.*, 2018, **20**, 9760–9769.
- 74 F. A. Bischoff, M. Alessio, F. Berger, M. John, M. Rybicki and J. Sauer, *Multi-Level Energy Landscapes: The MonaLisa Program*, 2019.
- 75 F. Neese, *Wiley Interdiscip. Rev.: Comput. Mol. Sci.*, 2012, **2**, 73–78.
- 76 F. Neese, *Wiley Interdiscip. Rev.: Comput. Mol. Sci.*, 2018, **8**, e1327.
- 77 F. Weigend and R. Ahlrichs, *Phys. Chem. Chem. Phys.*, 2005, **7**, 3297–3305.
- 78 C. Tuma and J. Sauer, *J. Chem. Phys.*, 2015, **143**, 102810.
- 79 S. Svelle, C. Tuma, X. Rozanska, T. Kerber and J. Sauer, *J. Am. Chem. Soc.*, 2009, **131**, 816–825.
- 80 F. Pavošević, P. Pinski, C. Riplinger, F. Neese and E. F. Valeev, *J. Chem. Phys.*, 2016, **144**, 144109.
- 81 P. Pinski, C. Riplinger, E. F. Valeev and F. Neese, *J. Chem. Phys.*, 2015, **143**, 034108.
- 82 M. Feyereisen, G. Fitzgerald and A. Komornicki, *Chem. Phys. Lett.*, 1993, **208**, 359–363.
- 83 T. H. Dunning, Jr., *J. Chem. Phys.*, 1989, **90**, 1007–1023.
- 84 D. E. Woon and T. H. Dunning, Jr., *J. Chem. Phys.*, 1993, **98**, 1358–1371.
- 85 F. Jensen, *Theor. Chem. Acc.*, 2005, **113**, 267–273.
- 86 T. Helgaker, W. Klopper, H. Koch and J. Noga, *J. Chem. Phys.*, 1997, **106**, 9639–9646.
- 87 S. F. Boys and F. Bernardi, *Mol. Phys.*, 1970, **19**, 553–566.
- 88 H. V. Koningsveld, *Acta Crystallogr., Sect. B*, 1990, **46**, 731–735.
- 89 O. H. Han, C.-S. Kim and S. B. Hong, *Angew. Chem., Int. Ed.*, 2002, **41**, 469–472.
- 90 S. Sklenak, J. Dědeček, C. Li, B. Wichterlová, V. Gábová, M. Sierka and J. Sauer, *Angew. Chem., Int. Ed.*, 2007, **46**, 7286–7289.
- 91 B. C. Knott, C. T. Nimlos, D. J. Robichaud, M. R. Nimlos, S. Kim and R. Gounder, *ACS Catal.*, 2018, **8**, 770–784.
- 92 M. Sierka and J. Sauer, *J. Phys. Chem. B*, 2001, **105**, 1603–1613.
- 93 J. A. Ryder, A. K. Chakraborty and A. T. Bell, *J. Phys. Chem. B*, 2000, **104**, 6998–7011.
- 94 M. Brändle and J. Sauer, *J. Am. Chem. Soc.*, 1998, **120**, 1556–1570.
- 95 A. Ghorbanpour, J. D. Rimer and L. C. Grabow, *Catal. Commun.*, 2014, **52**, 98–102.
- 96 J. Sauer, H. Horn, M. Häser and R. Ahlrichs, *Chem. Phys. Lett.*, 1990, **173**, 26–32.
- 97 L. Ruiz Pestana, N. Mardirossian, M. Head-Gordon and T. Head-Gordon, *Chem. Sci.*, 2017, **8**, 3554–3565.
- 98 A. T. Smith, P. N. Plessow and F. Studt, *J. Phys. Chem. C*, 2021, **125**, 20373–20379.
- 99 M.-C. Silaghi, C. Chizallet, J. Sauer and P. Raybaud, *J. Catal.*, 2016, **339**, 242–255.
- 100 M. Zheng and B. C. Bukowski, *J. Phys. Chem. C*, 2024, **128**, 7549–7559.
- 101 J. Sauer, *J. Catal.*, 2024, **433**, 115482.
- 102 A. Erlebach, P. Nachtigall and L. Grajciar, *npj Comput. Mater.*, 2022, **8**, 174.
- 103 A. Erlebach, M. Šípka, I. Saha, P. Nachtigall, C. J. Heard and L. Grajciar, *Nat. Commun.*, 2024, **15**, 4215.
- 104 N. O'Neill, B. X. Shi, K. Fong, A. Michaelides and C. Schran, *J. Phys. Chem. Lett.*, 2024, **15**, 6081–6091.

