



Cite this: *RSC Adv.*, 2018, 8, 13954

# Artificial simulation of salivary and gastrointestinal digestion, and fermentation by human fecal microbiota, of polysaccharides from *Dendrobium aphyllum*

Huifan Liu,<sup>a</sup> Fan Gong,<sup>b</sup> Fashan Wei<sup>b</sup> and Hui Wu<sup>ID</sup>\*<sup>a</sup>

*In vitro* salivary and gastrointestinal (GI) digestion and fermentation of polysaccharides extracted from *Dendrobium aphyllum* were investigated in this study. Salivary amylase showed no influence on *D. aphyllum* polysaccharides (DAP). The molecular weight of DAP decreased dramatically during the first 0.5 h of gastric digestion, and then reduced steadily during the subsequent GI tract consumption. The content of reducing sugars increased steadily during GI digestion. Only released free mannose of DAP was detectable by gas chromatography-mass spectrometry analysis during the first 12 h of fermentation, which was contributed by fecal microbiota metabolism. In terms of the fermentation pattern, the pH dropped significantly due to the formation of six types of short-chain fatty acids (SCFAs). This study demonstrates that polysaccharides extracted from *D. aphyllum* can be digested by the GI tract and are physiologically active in the human large bowel by lowering the pH of the large intestinal environment and promoting the production of SCFAs.

Received 6th February 2018

Accepted 3rd April 2018

DOI: 10.1039/c8ra01179f

rsc.li/rsc-advances

## 1. Introduction

Bioactive carbohydrates have shown satisfactory benefits to human health through their antioxidant, immune-boosting, antidiabetic, antilipidemic, and antineoplastic effects.<sup>1,2</sup> However, as functional foods, the actual effects of macromolecular carbohydrates on the human body can only be determined after digestion, glycolysis, and absorption.<sup>3,4</sup> The human consumption process may directly or indirectly alter carbohydrate structure and content due to the presence of strong acids, increased bile levels, and complicated intestinal microbiota conditions, all of which may also alter their bioactive effects.<sup>5</sup> Based on human physiological gastric and intestinal pH conditions, *in vivo* digestion models have been developed because they are simple, cheap, and reproducible tools, and do not require ethical considerations.<sup>6</sup>

Carbohydrates are a type of prebiotics that can selectively contribute to the diversity and quantity of intestinal colonized microbiota, such as *Lactobacillus* and *Bifidobacterium* species, and can decrease the risk of various chronic diseases in humans.<sup>7,8</sup> Fermentation is one of the pathways utilized to generate energy through the breakdown of carbohydrates to

yield short-chain fatty acids (SCFAs); this is the primary activity of the large-intestinal microflora.<sup>9</sup> In addition to providing the body with energy, SCFAs can stimulate salt and water absorption, and affect epithelial cell growth and cell proliferation in the jejunum and ileum.<sup>10</sup> Moreover, SCFAs can inhibit the breeding of harmful pathogens and colorectal cancer by decreasing the pH of the internal environment.<sup>6</sup> *In vitro* fermentation using the TIM-2 system is a satisfactory method for evaluating the fermentation process and metabolic characteristics of large-intestinal microflora on carbohydrates.<sup>5</sup> After collecting intestinal microbiota from human feces, a simulated human intestinal fermentation environment is implemented using a vacuum and temperature control.<sup>11</sup> The advantages of this method are the absence of ethical constraints, lack of influence of other digested compounds, and easy monitoring of the degradation conditions; however, the fecal inoculum is not a good representation of the entire colon.<sup>12</sup>

*Dendrobium* is the second largest genus in Orchidaceae, and *Dendrobium* species have been used as traditional medicine and edible food sources for decades in Asia.<sup>13</sup> Among 78 *Dendrobium* species, *Dendrobium aphyllum* is used as a functional food and is widely planted in tropical and subtropical regions of Asia, Australia, and the Pacific islands for its cultivation advantages.<sup>14</sup> Polysaccharides extracted from *D. aphyllum* are a source of dietary fiber from carbohydrates digested in the gastrointestinal (GI) tract and is utilized by human large-intestinal microflora. Polysaccharides can decrease the pH in parts of the colon, regulate the intestinal immune system, and mediate species

<sup>a</sup>Department of Food Quality and Safety, College of Food Science and Engineering, South China University of Technology, Wushan Road 381, Guangzhou, Guangdong, 510640, China. E-mail: fehww@scut.edu.cn; Fax: (+86) 20-87112532; Tel: (+86) 20-87112853

<sup>b</sup>Henan Institute of Product Quality Inspection and Supervision, Zhengzhou, Henan, 450000, China



and quantity of large-intestinal microflora in order to decrease the risk of various chronic diseases.<sup>9,15</sup> As large biological molecules, different polysaccharides have different digestive characteristics and fermentation capabilities due to their complex structures,<sup>16</sup> so it is valuable to evaluate *D. aphyllum* polysaccharides that have not previously been analyzed.

In our previous study, *D. aphyllum* polysaccharides (DAP; molecular weight [ $M_w$ ], 471.586 kDa), was composed of mannose (71.3%) and glucose (28.7%), and its backbone was composed of  $\beta$ -D-mannopyranose and  $\beta$ -D-glucopyranose residues with mainly 1,4-linked glycosidic bonds.<sup>17</sup> This work was designed for the development of an *in vitro* digestion model for subsequent *in vitro* fermentation with human fecal cultures to provide human consumption information. Changes in pH, molecular weight, SCFA production, and total and reducing sugar contents were analyzed. In addition, the relationship between carbohydrate consumption and SCFA production was evaluated. The study may provide some useful information for the study of artificial stimulated GI digestion and colon fermentation on carbohydrates, especially on *D. aphyllum* species.

## 2. Materials and methods

### 2.1 Materials

*D. aphyllum* samples were collected from the GAP farm located in Xishuangbanna, Yunnan province, China. These samples were authenticated by experts from the Department of Life Science, South China Agricultural University. Standard monosaccharides (L-rhamnose, D-ribose, L-(+)-arabinose, D-(+)-xylose, D-mannose, and D-(+)-glucose) were purchased from Sigma (St. Louis, MO, USA). Acetic acid (100% purity) and i-valeric acid (99.9% purity) were purchased from Merck (Darmstadt, Germany). Propionic acid (100% purity) was purchased from Janssen Chimica (Belgium). Butyric acid (99.9% purity), i-butyric acid (100% purity), and valeric acid (100% purity) were purchased from Sigma (St. Louis, MO, USA). All other chemicals and reagents used were of analytical grade and commercially available.

### 2.2 DAP sample preparation

DAP was collected as described in our previous study.<sup>17</sup> Briefly, after decolorization and removal of water-soluble impurities, the collected sample powder (10 g) was extracted in a material to solvent ratio of 1 : 85 (w/v), temperature of 80 °C, and time of 4.6 h. After using the Sevag method for deproteinization, the protein-free crude polysaccharide (10 mL, 10  $\mu$ g mL<sup>-1</sup>) was loaded onto a DEAE-Sepharose Fast Flow chromatography column (1.6  $\times$  35 cm) at a flow rate of 1 mL min<sup>-1</sup>, and then eluted with ultrapure water. Eluents were analyzed by the phenol-sulfuric acid method, and the polysaccharide fraction was then concentrated, dialyzed, and lyophilized. A polysaccharide fraction sample of 1.95 g was dissolved in 1.3 L ultrapure water, and 1 mL of this sample was loaded onto a Sephadex G-200 chromatography column (1.6  $\times$  60 cm). The polysaccharide fraction was washed with 300 mL ultrapure

water at a flow rate of 1 mL min<sup>-1</sup> for a total of 300 min. Following elution and lyophilization, a DAP fraction of 1.376 g was obtained.

### 2.3 Simulated saliva digestion

**2.3.1 Saliva preparation.** Saliva was collected following the method reported by Hu *et al.* (2013).<sup>18</sup> All experiments were performed in compliance with “China food safety standards GB151935-2014”, and approved by the ethics committee at South China University of Technology. Informed consents were obtained from human participants of this study. In general, three health volunteers without any chronic disease and had not taken antibiotics for at least three months were chosen to have their saliva collected. Before the collection, volunteers drank a little water and gargled at least 30 seconds in order to maintain a neutral oral environment. Subsequently, the saliva from the first 30 seconds was discarded, and the saliva was collected from the next 2–2.5 minutes with a frequency of 30 seconds. In order to pellet the cells, the collected saliva was immediately centrifuged at 1500  $\times$  g for 10 min and stored at -20 °C until use. Salivary amylase activity was analyzed following the method reported by Hu *et al.* (2018).<sup>18</sup>

**2.3.2 Digestion by human saliva.** Using the method described by Chen *et al.* (2016)<sup>19</sup> with some modifications, two groups of sample test tubes were prepared in triplicate, containing either the test samples (DAP-Sa) (2 mL saliva and 2 mL of 2 mg mL<sup>-1</sup> DAP solution), or the controls (2 mL saliva and 2 mL ultrapure water). After mixing completely, the groups of test tubes were digested at 37 °C for 4 h and then incubated for 5 min in boiling water to inactivate human salivary amylase.<sup>20</sup> Three independently replicated digestions were performed for each sample. The DAP-Sa and control samples were then lyophilized and store at -20 °C until use.

### 2.4 Simulated artificial gastric and intestinal digestion *in vitro*

**2.4.1 Gastric medium preparation.** The gastric medium was prepared with reference to the method of Mkandawire *et al.* (2015) with some modifications.<sup>21</sup> The gastric electrolyte solution (GES) consisted of 3.1 g NaCl, 1.1 g KCl, 0.15 g CaCl<sub>2</sub>, and 0.6 g NaHCO<sub>3</sub> dissolved in 1 L ultrapure water. HCl (0.1 M) was prepared to adjust the GES to pH 3. Subsequently, 35.4 mg of pepsin from porcine gastric mucosa and 37.5 mg of gastric lipase were added to a solution consisting of 150 mL GES and 1.5 mL CH<sub>3</sub>COONa (1 M, pH 5). After 10 min of gentle mixing at approximately 37 °C, 0.1 M HCl was used to adjust the pH to 3.

**2.4.2 Small intestinal alkaline medium preparation.** The simulated small intestinal electrolyte solution (SIES) was prepared according to the method reported by Mkandawire *et al.* (2015) with some modification, which consisted of 5.4 g NaCl, 0.65 g KCl, and 0.33 g CaCl<sub>2</sub>·H<sub>2</sub>O dissolved in 1 L ultrapure water. NaOH (0.1 M) was used to adjust the SIES to pH 7. In addition, for the pancreatin enzyme solution, 14 g of pancreatin enzymes was dissolved in 200 mL of water and centrifuged for 10 min at 4800  $\times$  g after gentle mixing for 10 min. A total of 100 mL supernatant was combined with 200 g



of 4% bile salt and 100 g of 7% pancreatic enzymes (w/w). Trypsin (13 mg) was then added to the adequately mixed solution, and the pH was adjusted to 7.5 with 0.1 M NaOH.

**2.4.3 Artificial GI digestion assay.** Fourteen test tubes were prepared containing 10 mL GES and 10 mL of 2 mg mL<sup>-1</sup> DAP-Sa. Another 14 test tubes contained 10 mL GES and 10 mL ultrapure water as controls. All tubes were subjected to simulated digestion in a shaking incubator at 120 rpm at 37 °C. The gastric digestion of the samples (DAP-S) and the controls (Control-S) were analyzed after 0.5, 1, 2, 3, 4, 5, and 6 h by removing the corresponding tubes. The remaining seven sample and control tubes were prepared for simulated intestinal digestion by adding 6 mL SIES after adjusting the pH of each tube to 7 with 1 M NaHCO<sub>3</sub>. Samples were mixed thoroughly and digested in a shaking incubator at 120 rpm at 37 °C. The intestinal digestion of the samples (DAP-I) and the controls (Control-I) were also analyzed after 0.5, 1, 2, 3, 4, 5, and 6 h digestion by removing the corresponding tubes.

## 2.5 *In vitro* fermentation of polysaccharides

**2.5.1 Fecal slurry preparation.** Fresh fecal samples were collected following the method of Patán *et al.* (2015) with some modification.<sup>22</sup> The statement of human subjects was in line with that in 2.3.1. In brief, fecal samples from three healthy donors, who had never suffered large bowel disease and had not taken antibiotics for at least 3 months, were collected and mixed immediately, and then stored in an anaerobic jar until use.

**2.5.2 Preculture.** One liter of preculture medium was prepared with 10 g tryptone, 5 g yeast, 10 g NaCl, 5 g glucose, and 6 g maltose. In total, 120 g fecal samples was added to 1 L preculture medium and preincubated anaerobically at 37 °C and 160 rpm in a TC-2212B Thermostat shaker (Shanghai Nuojia Corp., Shanghai, China).<sup>23</sup> After 48 h, 120 mL fecal fluid medium was filtered through sterile gauze twice to remove large particles as soon as possible and stored in an anaerobic jar until use.<sup>22</sup>

**2.5.3 Fermentation.** One liter of growth medium was prepared with 4.5 g KCl, 0.69 g MgSO<sub>4</sub>·H<sub>2</sub>O, 0.8 g L-cysteine HCL·H<sub>2</sub>O, 0.5 g KH<sub>2</sub>PO<sub>4</sub>, 1.5 g NaHCO<sub>3</sub>, 0.4 g bile salt, 4.5 g NaCl, 0.08 g CaCl<sub>2</sub>, 0.005 g FeSO<sub>4</sub>·7H<sub>2</sub>O, 1 mL Tween 80, and 4 mL resazurin solution (0.025%, w/v). After mixing thoroughly, the growth medium was sterilized at 121 °C for 15 min.

Twenty anaerobically sealed tubes were prepared, 5 of each containing 20% DAP-I (100 mg in total), mannose (71.26 mg in total), glucose (28.74 mg in total), or water, respectively. The mass of mannose and glucose was calculated according to the monosaccharide composition assay of DAP.<sup>17</sup> To each anaerobically sealed tube, 40% human fecal preculture (as described in 2.5.2) and 40% growth medium were added for *in vitro* fermentation with the precultured human fecal microbiota. Under conditions of 10% H<sub>2</sub>, 10% CO<sub>2</sub>, and 80% N<sub>2</sub> in a Forma Anaerobic System (Thermo Electron Corp., Marietta, Ohio, USA), the anaerobic sealed tubes were incubated in a TC-2212B Thermostat shaker (37 °C, 160 rpm). Fermentation of the samples (DAP-F, mannose, and glucose) and the controls

(Control-F) were analyzed before or after 0.5, 6, 12, and 24 h culture by removing the corresponding tubes and plunging them into iced water for 20 min to inactive the fermentation.

## 2.6 Determination of pH for *in vitro* fermentation of polysaccharide

The pH of the fermentation cultures from 2.5.3 were measured with a micro-pH meter (Tianjing Analytic Corp., Tianjing, China). In order to better analyze fermentation patterns, the anaerobically sealed tubes containing DAP-F, mannose, glucose, or control removed after 24 h were continuously cultured in a TC-2212B Thermostat shaker (37 °C, 160 rpm) for a further 24 h, and the pH was measured again by micro-pH meter.

## 2.7 Determination of molecular weight changes

High-performance gel permeation chromatography (HPGPC) was conducted to determine the weight average  $M_w$  of DAP, DAP-Sa, DAP-S, DAP-I, and DAP-F. A Waters HPLC system (Waters, Milford, MA, USA), serially linked with two gel columns (TSK-G5000PWXL column, 7.8 × 300 mm inner diameter, 10 μm; and TSK G-3000PWXL column, 7.8 × 300 mm inner diameter, 6 μm) was used, and samples were eluted with 0.02 M KH<sub>2</sub>PO<sub>4</sub> and detected with a Waters 2414 differential refractive index detector with a flow rate of 0.6 mL min<sup>-1</sup> and column temperature of 35 °C. A total of 10 μL sample solution was injected, and chromatography was performed for 45 min. Dextran standards with different molecular weights ( $M_w$  5.2 × 10<sup>3</sup>, 1.16 × 10<sup>5</sup>, 2.38 × 10<sup>4</sup>, 4.86 × 10<sup>4</sup>, 1.48 × 10<sup>5</sup>, 2.73 × 10<sup>5</sup>, 4.1 × 10<sup>5</sup>, and 6.68 × 10<sup>5</sup> Da) were used for data analysis.

## 2.8 Determination of reducing sugar content

The reducing sugar content in each sample after artificial digestion and fermentation was assessed using an original sugar content kit (Suzhou Comin Biotechnology Co., Ltd., Suzhou, China).

## 2.9 Determination of released free monosaccharides

Six monosaccharides (L-rhamnose, D-ribose, L-(+)-arabinose, D-(+)-xylose, D-mannose, and D-(+)-glucose) were weighed (2 mg), prepared as concentration gradients, and then 1 mg myoinositol, 10 mg hydroxylamine hydrochloride, and 1 mL pyridine were added for derivatization. After mixing thoroughly, the samples were placed in a water bath for 30 min at 90 °C, 1 mL of acetic anhydride was added, and samples were incubated for another 30 min in the water bath at 90 °C. Sample solutions (1 mL) were passed through 0.22 μm organic phase filter membranes. Sample (DAP, DAP-Sa, DAP-S, DAP-I, and DAP-F) and control (Control-S, Control-I) solutions (5 mL) were analyzed after derivatization as above. After preparation, 1 μL of each sample was analyzed by gas chromatography (GC) (7890B, Agilent, Santa Clara, CA, USA) with a DB-170 chromatographic column (30 mm × 0.53 mm × 0.25 μm) from 100 °C to 230 °C at 10 °C min<sup>-1</sup>, then from 230 °C to 250 °C at 50 °C min<sup>-1</sup>, and 1 min retention. A flame ionization detector was used with



parameters of 230 °C at 300 mL min<sup>-1</sup> for the air rate, 30 mL min<sup>-1</sup> for the hydrogen rate, and 5 mL min<sup>-1</sup> for the nitrogen rate.

## 2.10 Determination of SCFAs by GC-mass spectroscopy (GC-MS)

The DAP-F solutions were centrifuged (3900 × *g*, 15 min) and the supernatants were collected for the determination of SCFAs. SCFA standards, including concentration gradients of acetic acid, propionic acid, i-butyric acid, butyric acid, i-valeric acid, and valeric acid, were analyzed. Chromatographic analysis was carried out using the Agilent 7890 N GC and Agilent 5975C QMS system. A GC column (HP-INNOWAX, 190901N-213, J & W Scientific, Agilent Technologies Inc., USA) of 30 m × 250 μm in support-coated with 0.25 μm film thickness was used. Nitrogen was supplied as the carrier gas at a flow rate of 1.2 mL min<sup>-1</sup> with a split ratio of 1 : 50. The initial column temperature was held at 40 °C for 1 min, then programmed at a rate of 5 °C min<sup>-1</sup> to 250 °C for 10 min. The temperature of the FID and injection port was 250 °C. The injected standard SCFA and sample volume for GC analysis was 0.5 μL, and the running time for each analysis was 50.5 min.

## 2.11 Carbohydrate contribution for SCFA production

The production of SCFAs in the fermentation cultures with added glucose or mannose were determined by GC-MS as described in 2.10. The contribution of glucose or mannose in the DAP for SCFA production (mainly acetic, propionic, valeric, and butyric acids) at different fermentation time points was calculated as follows:<sup>24</sup>

$$Y(\%) = C_a/C_b \times 100,$$

where *Y* is the contribution of glucose or mannose in the polysaccharide for SCFA production at the different time points (%); *C<sub>a</sub>* is the SCFA concentration of the fermentation cultures with added glucose or mannose at different fermentation time points (mM); *C<sub>b</sub>* is the SCFA concentration of the fermentation cultures with added DAP-F at the same time points as *C<sub>a</sub>* (mM).

## 2.12 Statistical analysis

Data are expressed as the mean ± standard deviation (SD) of three replicates. Significant differences between the means of parameters were calculated using Duncan's multiple-range test with SPSS 17.0 software (SPSS, Inc., Chicago, IL, USA). *P* < 0.05 was considered to indicate statistical significance.

# 3. Results and discussion

## 3.1 Molecular changes of DAP after digestion and fermentation

We hypothesized that in most cases, the gastric emptying process can last 2 h, and may be less than 2 h for these polysaccharides. However, because artificial stimulation was *in vitro* in this study, 6 h was used for the stomach and intestinal digestion model. This allowed for a sufficient simulation of GI

digestive conditions of DAP for a more reliable and logical characterization, as well as to maintain consistency with a previously reported study.<sup>18</sup> The molecular changes during specific digestion and fermentation processes are shown in Table 1. In general, the molecular weights dropped steadily from 471.586 ± 67.2 to 0.37 ± 0.1 kDa, and were not detected after the fermentation process in which macromolecular DAP were digested to low molecular weight polysaccharides and subsequently utilized by human microbiota to oligosaccharides and monosaccharides.

In terms of saliva digestion, the constituents and their amounts vary in different human saliva samples, but salivary amylase content is similar, with a certain range of amylase activity and approximate pH of 7.2. Salivary amylase is the major factor during saliva digestion for breaking down polysaccharides and has been reported to have significant effects on amylose, amylopectin, and glycogen.<sup>25</sup> However, there were no significant differences before and after salivary digestion; the DAP molecular weight changed from 471.586 ± 67.2 (before digestion) to 471.231 ± 71.1 kDa (DAP-Sa). Because salivary amylase activity was assessed as 157 ± 5 D units mL<sup>-1</sup>, agreeing with the value (18–208 D units mL<sup>-1</sup>) reported previously by Ruth and Roozen (2000)<sup>25</sup>, the value of salivary amylase was appropriate. However, DAP molecules were not liberated, and this may be because salivary amylase has been shown to affect molecules containing α-limit dextrin,<sup>26,27</sup> but the glycosidic bonds in dendrobium polysaccharides are mainly β-(1,4)-linkages.<sup>28</sup>

During artificially simulated gastric digestion, the molecular weight of DAP-S dropped rapidly for 0.5 h at the beginning and subsequently decreased steadily over the following 5.5 h. Because the gastric medium has a strong acidic pH of 3, and carbohydrates have been shown to be very sensitive to acidic pH,<sup>18</sup> the molecular breakdown of DAP-S was more efficient in the acid medium. During the 6 h simulated intestinal digestion, molecular weights of DAP-I also decreased steadily, almost generating oligosaccharides (the *M<sub>w</sub>* of oligosaccharides were 300–2000 Da). There are two main pathways for the molecular loss of DAP; one is the breakdown of glycosidic bonds.<sup>29</sup> Meanwhile, the active forces between glycosidic bonds or monosaccharide groups induce polysaccharides to form aggregates in aqueous systems, whereas strong acids, high concentrations of bile salts, and agglomerates contained in the GI medium destroy the spatial structure of DAP.<sup>30</sup> Moreover, the molecular weights of DAP decrease significantly in the stimulated stomach environment but minimally in the intestinal condition. The pH and salts were able to depolymerize and break of macromolecular substance.<sup>31,32</sup> When processing the artificially stimulated GI digestion, Hu *et al.* (2013) found that the pH was the major cause for the significant decrease in molecular weight of *Plantago asiatica* L., and the variations of molecular weight were in line with our results.<sup>18</sup> Therefore, we concluded that the very low pH in the gastric environment resulted in the depolymerization and breakage of DAP, which is consistent with specific kinds of macromolecular carbohydrates reported previously.<sup>33</sup>





**Table 1** Average molecular weight, content of reducing sugars ( $C_R$ ) and released free monosaccharide of *D. aphyllum* polysaccharides at different points of saliva, gastric, intestinal digestion and fermentation *in vitro*<sup>a</sup>

Samples	MW (kDa)	CR (mM)	Released free monosaccharide (ng $\mu$ l)	
			Glucose	Mannose
Before digestion	471.586 $\pm$ 67.2a <sup>b</sup>	0.1189 $\pm$ 0.00382a	ND <sup>c</sup>	ND
Saliva (4 h)	471.231 $\pm$ 71.1a	0.1126 $\pm$ 0.01218a	ND	ND
Stomach (0.5 h)	19.83 $\pm$ 6.3b	0.2847 $\pm$ 0.00322b	ND	ND
Stomach (1 h)	17.1 $\pm$ 2.3b	0.2849 $\pm$ 0.00684b	ND	ND
Stomach (2 h)	15.9 $\pm$ 1.2b	0.2887 $\pm$ 0.00150b	ND	ND
Stomach (3 h)	13.2 $\pm$ 1.9c	0.2899 $\pm$ 0.00578b	ND	ND
Stomach (4 h)	11.4 $\pm$ 1.6c	0.2900 $\pm$ 0.00188b	ND	ND
Stomach (5 h)	9.2 $\pm$ 0.3d	0.3010 $\pm$ 0.00344c	ND	ND
Stomach (6 h)	8.8 $\pm$ 0.5d	0.3042 $\pm$ 0.00146c	ND	ND
Intestine (0.5 h)	8.2 $\pm$ 0.1d	0.3121 $\pm$ 0.00818c	ND	ND
Intestine (1 h)	6.9 $\pm$ 0.2e	0.31894 $\pm$ 0.01480c	ND	ND
Intestine (2 h)	6.3 $\pm$ 0.8e	0.3191 $\pm$ 0.00280c	ND	ND
Intestine (3 h)	6.4 $\pm$ 0.1e	0.3519 $\pm$ 0.00993d	ND	ND
Intestine (4 h)	4.8 $\pm$ 0.1f	0.3570 $\pm$ 0.00049d	ND	ND
Intestine (5 h)	3.9 $\pm$ 0.1f	0.3727 $\pm$ 0.00038e	ND	ND
Intestine (6 h)	2.1 $\pm$ 0.2h	0.3820 $\pm$ 0.00179e	ND	ND
Fermentation (0.5)	1.92 $\pm$ 0.5h	0.466 $\pm$ 0.00311f	ND	428.6
Fermentation (6)	0.87 $\pm$ 0.2h	0.3859 $\pm$ 0.00104e	ND	787.496
Fermentation (12)	0.37 $\pm$ 0.1I	0.3797 $\pm$ 0.00038e	ND	987.183
Fermentation (24)	ND	0.2956 $\pm$ 0.00098b	ND	ND

<sup>a</sup> Data are shown as mean  $\pm$  standard ( $n = 3$ ). <sup>b</sup> Mean values in the same column with different letters were significantly different (Tukey test,  $p < 0.05$ ). <sup>c</sup> Not detected or lower than limit of quantification.

A continuous molecular weight reduction occurred during the culture with human feces, and after this fermentation process, the molecular weight was no longer detectable. The steady loss of DAP-F molecules was attributed to microbial metabolism, including hydrogen carbon dioxide and SCFA generation.<sup>34</sup>

### 3.2 Content change of reducing sugars in DAP after digestion and fermentation

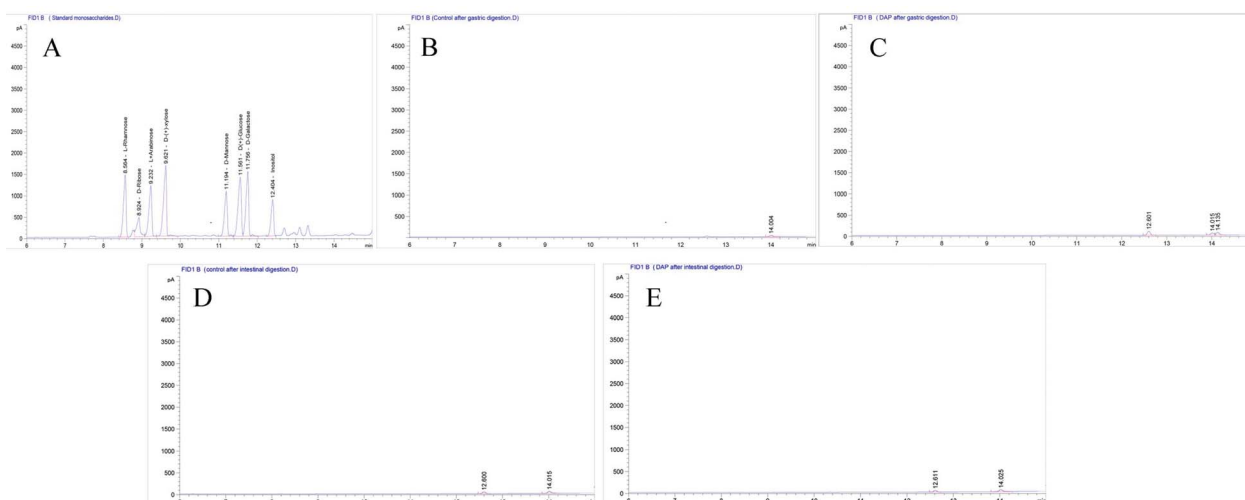
As discussed above, the molecular loss of DAP may due to glycosidic bond breakdown, or composition or spatial structure disruption, but the content variation of reducing sugars can be used determine the exact reason.<sup>35</sup> As shown in Table 1, the reducing sugar content before the digestion was 0.1189  $\pm$  0.00382 mM, and after the simulated gastric digestion, this increased significantly to 0.3042  $\pm$  0.00146 mM. It has been reported that quantitative reducing ends would increase when the loss of molecules was caused by the breakdown of glycosidic bonds.<sup>36</sup> Moreover, the acidic pH would cause generate reducing end through the breakdown of glycosidic bonds.<sup>18</sup> After intestinal digestion, the reducing sugar content increased slightly to 0.3820  $\pm$  0.00179 mM, but the molecular weight of DAP-I was significantly decreased; therefore, the reason for the intestinal molecular lost may be due to the disruption of aggregates by substances contained in the intestinal medium, such as the high concentration of bile salt or other agglomerates. When focusing on the fermentation pattern, the reducing sugar content increased during the first 0.5 h to 0.466  $\pm$  0.00311 mM and subsequently decreased from 0.3859  $\pm$

0.00104 mM to 0.2956  $\pm$  0.00098 mM. The reason for the increase in reducing sugars may be due to the degradation by microbiota of polysaccharides to generate reducing ends.<sup>18</sup> It was discovered that polysaccharides, as an energy source, can be utilized by gut bacteria to produce hydrogen and carbon dioxide during respiration and flatus production,<sup>10</sup> which leads to a decrease in reducing sugars. In fact, microbial metabolism is a complex process in which various types and amounts of bacteria modulate individually or interdependently during fermentation;<sup>16</sup> therefore, the variation in reducing sugar content may be attributed to the combined effects of microbial degradation and utilization.

### 3.3 Determination of released free DAP monosaccharides after digestion and fermentation

As shown in Fig. 1A, six standard monosaccharides, L-rhamnose, D-ribose, L-(+)-arabinose, D-(+)-xylose, D-mannose, and D-(+)-glucose were satisfactorily separated within 13 min on GC-MS analysis. Based on the retention time and corresponding peaks in Fig. 1B–E, there were no monosaccharide-related peaks before or after gastrointestinal digestion when compared with the retention time of standard monosaccharides as shown in Fig. 1A, which infers that non-detectable released of free monosaccharides were generated during gastrointestinal digestion. We should note that the lower peaks shown on Fig. 1B–E were other substances in the gastrointestinal digestion medium captured by GC-MS. The absence of free monosaccharide production during digestion proves that acidic pH and substances contained within the gastrointestinal medium,

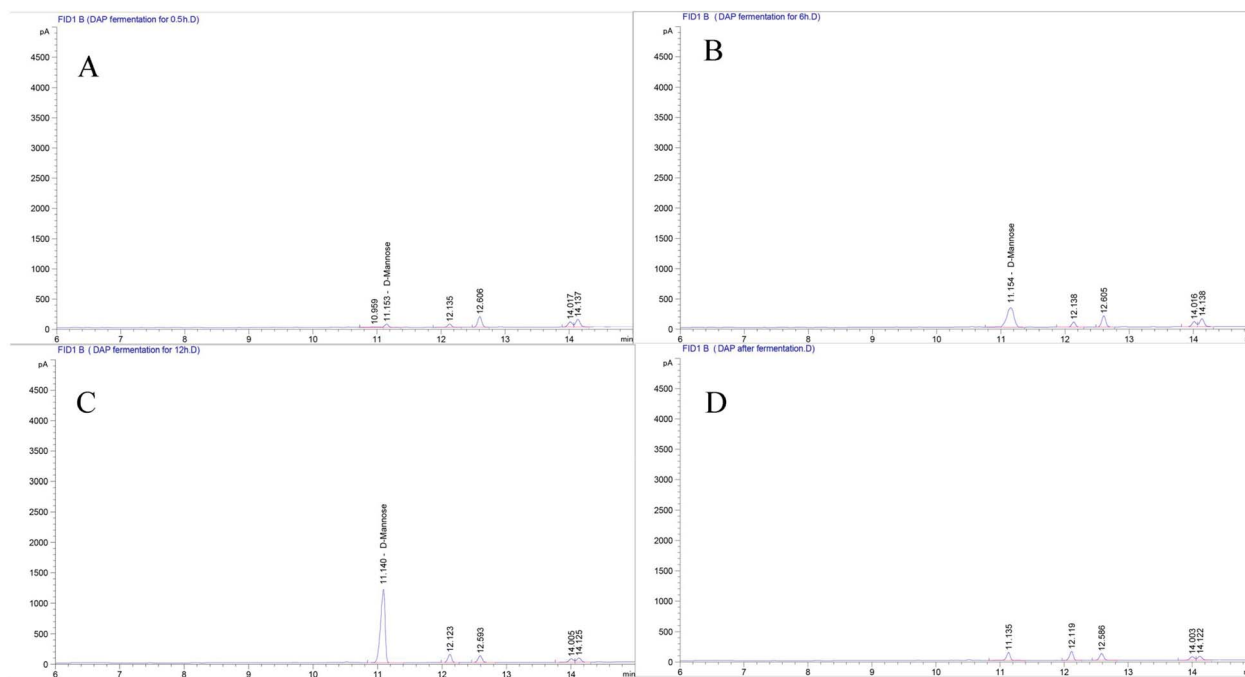




**Fig. 1** Monosaccharide compositions analysis by GC-MS. (A) Standard solution of monosaccharides including L-rhamnose, D-ribose, L-+-arabinose, D-(+)-xylose, D-mannose, D-(+)-glucose and D-galactose. Released free monosaccharides determination of *D. aphyllum* polysaccharides after stimulated gastric digestion (C) and stimulated intestinal digestion (D), and of control group after stimulated gastric digestion (B) and stimulated intestinal digestion (E) under a flame ionization detector with parameters of 230 °C at 300 mL min<sup>-1</sup> for air rate, 30 mL min<sup>-1</sup> for hydrogen rate, and 5 mL min<sup>-1</sup> for nitrogen rate.

especially bile salts, can only break down the glycosidic bonds or disrupt the structure sufficiently to lower the molecular weight and generate reducing ends. However, when focusing on the fermentation process, although DAP contains mannose and glucose, as shown in our previous study,<sup>17</sup> only mannose was detected in steadily increasing quantities from the beginning to 12 h (Fig. 2A–C) and was non-detectable after a 24 h fermentation (Fig. 2D). The concentrations of released free

monosaccharides is shown in Table 1 as 428.6 ng μL<sup>-1</sup>, 787.496 ng μL<sup>-1</sup>, and 987.183 ng μL<sup>-1</sup> for DAP-F fermentation at 0.5, 6, and 12 h, respectively. The combined effects of microbial degradation and utilization by human fecal microbiota leads to the change in free monosaccharides, which indicates that consumed polysaccharides in the human GI tract were escaping digestion and small intestinal absorption but reached the large intestine and were altered by its multiple microbiota.



**Fig. 2** Monosaccharide compositions analysis by GC-MS. Released free monosaccharides determination of *in vitro* fermentation used *D. aphyllum* polysaccharides as substrate at different times within 0 h (A), 6 h (B), 12 h (C), 24 h (D) under a flame ionization detector with parameters of 230 °C at 300 mL min<sup>-1</sup> for air rate, 30 mL min<sup>-1</sup> for hydrogen rate, and 5 mL min<sup>-1</sup> for nitrogen rate.



Meanwhile, the inability to detect glucose during fermentation may not be because free glucose was not released, but because glucose, as the major carbohydrate source, was very rapidly absorbed by microbiota when released.<sup>16</sup> At the same time, based on our previous study, the molar ratio of glucose and mannose was 1 : 2.48 (ref. 17); the high quantity of mannose leads to easier detection by GC-MS. However, mannose was not detectable after 24 h of fermentation, and one of the reasons may be that as culture time increased, the carbohydrate source contained in the fermentation medium was exhausted and only mannose could be used for microbial metabolism.<sup>37</sup>

### 3.4 Change in pH during fermentation

Some reports have shown decreased pH during polysaccharide fermentation,<sup>11,38</sup> which were consistent with our study. According to Fig. 3, the pH of different groups after 48 h of fermentation by human fecal microbiota were all below 7. The initial acidic pH ( $5.25 \pm 0.6$ ) in each group was related to the initial contents of SCFAs in human fecal cultures as shown in Table 2. The pH of the controls were all higher than those of the

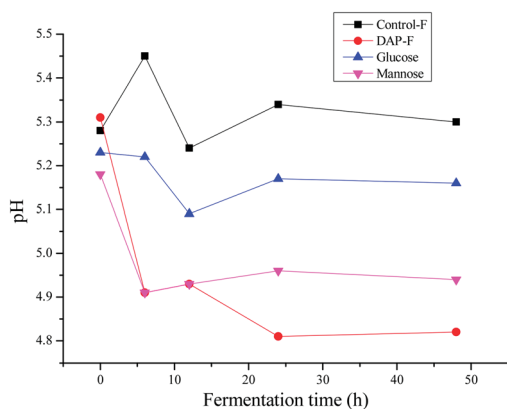


Fig. 3 Changes of the pH in fermented cultures *in vitro* fermentation used *D. aphyllum* polysaccharides, mannose, glucose or water (Control) as substrate at different times within 0 h, 6 h, 12 h and 24 h. The data was shown as means  $\pm$  SD ( $n = 3$ ).

polysaccharides because carbohydrate utilization by microbiota in the fermentation medium was much lower than that in the fermentation medium with polysaccharide sources; this produced more SCFAs to lower the pH. This was similarly observed with the comparison of the DAP-F, mannose, and glucose groups. Between 24 to 48 h of fermentation, there was no change in pH, indicating that there was no further production of SCFAs. In terms of the DAP-F fermentation pattern, the rapid drop in pH during the first 6 h indicates a great deal of SCFA generation during that period. Subsequently, slight increases in pH during the second 6 h implied a decrease in the speed of SCFA production, but for the third 6 h of fermentation, the speed obviously increased as the pH decreased again. Meanwhile, apart from the SCFA production, other factors influenced the change in pH, such as the culture medium variations, the types and amounts of microbiota in human fecal medium, and the types of SCFA generated. As we discussed above, pH is one of the most significant factors for altering the properties of polysaccharides; therefore, the molecular weight, reducing sugar content, and free monosaccharides were modulated by pH, mainly through the variation in SCFA production during the fermentation period.

### 3.5 SCFA production

As shown in Fig. 4A, six standard SCFAs, including acetic acid, propionic acid, i-butyric acid, butyric acid, i-valeric acid, and valeric acid, were satisfactorily separated within 22 min of GC-MS analysis. These SCFAs were detected before DAP-F fermentation (Fig. 4B), but their content was much lower than that observed after 24 h of fermentation (Fig. 4C). SCFA peaks and related retention times by GC-MS analysis indicated that SCFA formation occurred during the fermentation period.

As shown in Table 2, the production of these six types of SCFA in the control group was lower than that of the DAP-F group, which agreed with the pH results. In terms of the concentration of SCFAs in the DAP-F group, the production of all SCFAs increased with different tendencies; production of acetic acid, propionic acid, butyric acid, and valeric acid increased significantly from  $35.4682 \pm 0.34$  to  $50.5391 \pm$

Table 2 SCFAs concentration in fermentation cultures at different points with or without *D. aphyllum* polysaccharides as fermentation substrate<sup>a</sup>

Samples	Time (h)	SCFAs (mM)						Total
		Acetic acid	Propionic acid	Butyric acid	i-Butyric acid	Valeric acid	i-Valeric acid	
DAP	0.5	$35.4682 \pm 0.34$ <sup>a</sup>	$21.4445 \pm 0.79$ a	$6.5893 \pm 0.12$ a	$5.0530 \pm 0.53$ a	$8.2918 \pm 0.37$ a	$5.9622 \pm 1.06$ a	$82.8090 \pm 0.38$ a
	6	$41.2591 \pm 0.56$ b	$26.7522 \pm 0.63$ b	$8.1147 \pm 0.23$ b	$5.5537 \pm 0.55$ a	$8.8727 \pm 0.45$ a	$4.2574 \pm 0.65$ a	$94.8098 \pm 0.43$ c
	12	$41.9415 \pm 0.23$ b	$27.3576 \pm 0.26$ b	$9.2107 \pm 0.34$ c	$6.4534 \pm 0.89$ a	$9.8632 \pm 1.0$ a	$4.8503 \pm 0.82$ a	$99.6767 \pm 0.75$ d
	24	$50.5391 \pm 0.56$ c	$28.1192 \pm 0.85$ c	$10.9700 \pm 0.54$ d	$7.3119 \pm 0.98$ a	$11.9208 \pm 0.65$ b	$6.3755 \pm 0.66$ a	$115.2365 \pm 0.81$ e
Control	0.5	$36.9488 \pm 0.78$ a	$25.7946 \pm 0.78$ a	$6.3807 \pm 0.22$ a	$5.2955 \pm 0.45$ a	$7.0789 \pm 0.72$ a	$4.4409 \pm 0.37$ a	$85.9394 \pm 0.69$ b
	6	$34.3910 \pm 0.39$ b	$26.9052 \pm 0.82$ b	$5.9692 \pm 0.45$ a	$4.7433 \pm 0.51$ a	$6.5432 \pm 0.51$ a	$5.3475 \pm 0.66$ a	$83.8994 \pm 0.79$ a
	12	$36.1859 \pm 0.84$ a	$26.7541 \pm 0.81$ b	$5.6494 \pm 0.23$ 6a	$4.8263 \pm 0.39$ a	$5.9959 \pm 0.71$ a	$6.9415 \pm 0.69$ a	$86.3531 \pm 1.74$ b
	24	$35.9172 \pm 0.45$ c	$26.9978 \pm 0.56$ b	$6.2616 \pm 0.67$ a	$6.0914 \pm 0.12$ a	$5.8975 \pm 0.34$ a	$5.3580 \pm 0.62$ a	$86.5235 \pm 1.07$ b

<sup>a</sup> Data are shown as mean  $\pm$  standard ( $n = 3$ ). <sup>b</sup> Mean values in the same column with different letters were significantly different (Tukey test,  $p < 0.05$ ).



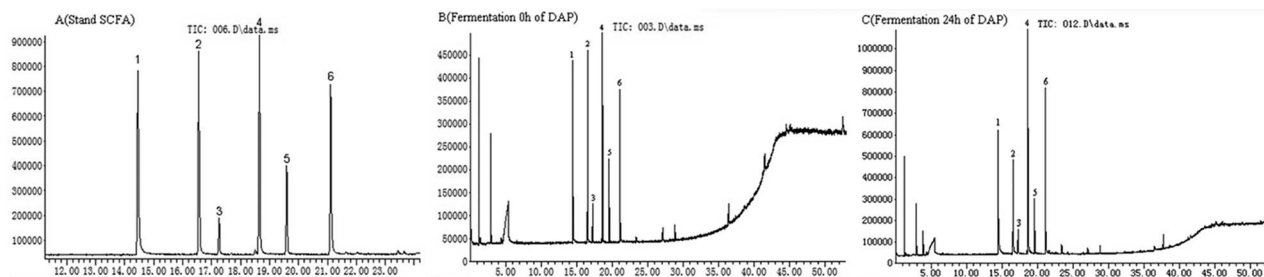


Fig. 4 SCFAs analysis by GC-MS in standard solution (A) and *in vitro* fermentation used *D. aphyllum* polysaccharides as substrate before (B) and after (C) fermentation. Peaks followed by the order: 1, acetic acid; 2, propionic acid; 3, i-butyric acid; 4, butyric acid; 5, i-valeric acid; 6, valeric acid.

0.56 mM,  $21.4445 \pm 0.79$  to  $28.1192 \pm 0.85$  mM,  $6.5893 \pm 0.12$  to  $10.9700 \pm 0.54$  mM, and  $8.2918 \pm 0.37$  to  $11.9208 \pm 0.65$  mM, respectively. These dominant SCFAs have been shown to have various advantages to human health and decrease the risk of chronic diseases.<sup>9,10</sup>

In general, various factors influence the content and distribution of SCFAs, including the type and amounts of microbiota, type and amounts of indigestible carbohydrates available, and

the fermentation parameters such as time, temperature, and anaerobic environment.<sup>34</sup> It has been reported that colonic microbiota obtains its energy mainly by oxidizing SCFAs in the order of butyric > valeric > propionic > acetic acid, which means that microbial metabolism activity also influences the properties of SCFAs.<sup>12</sup> Moreover, the human diet contains a mixture of carbohydrates that influence fermentation patterns; thus, it is difficult to accurately determinate SCFA production values

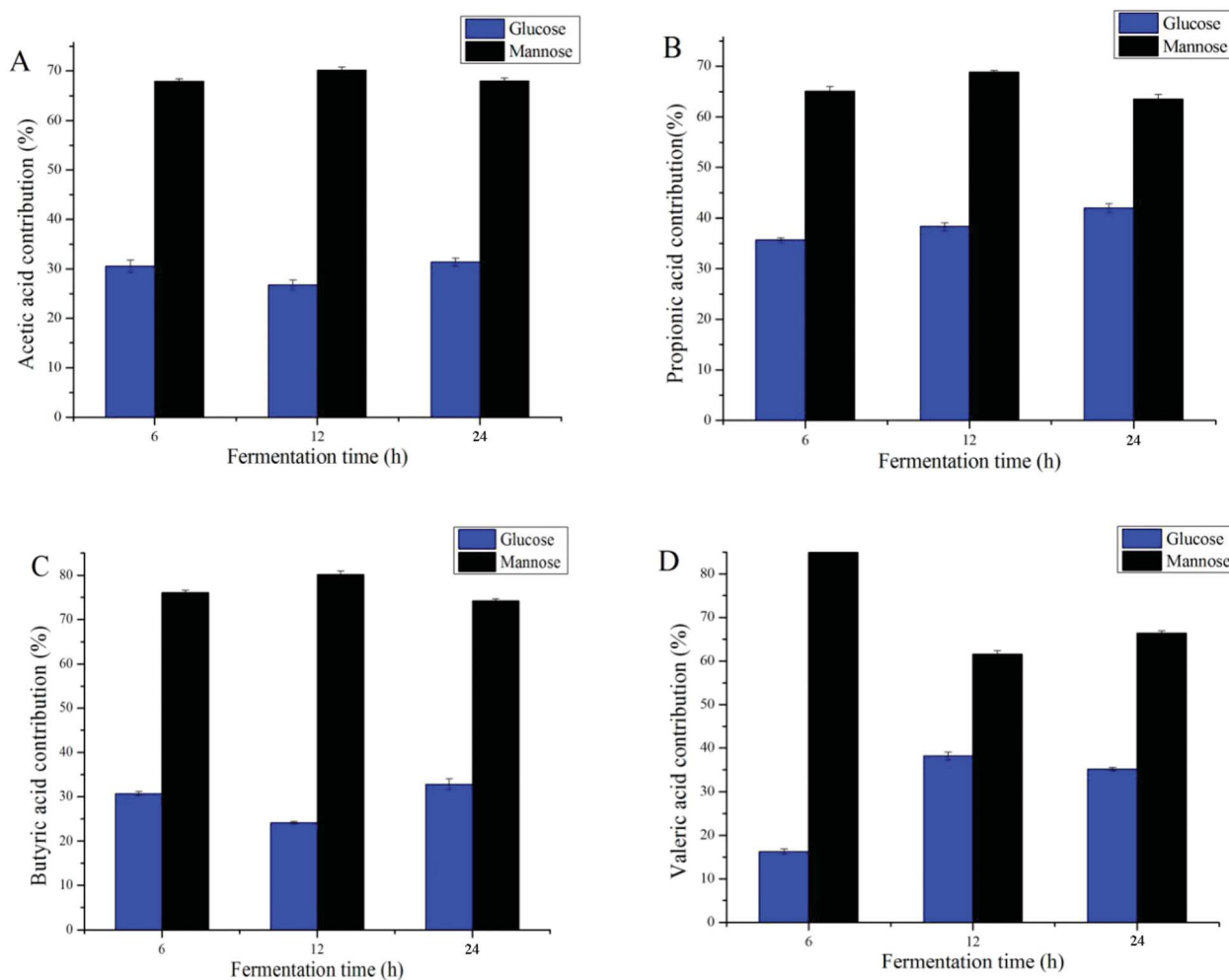


Fig. 5 Contribution of glucose and mannose in the *D. aphyllum* polysaccharides for the production of acetic acid (A), propionic (B), butyric acid (C) and valeric acid (D) at different time during fermentation through GC-MS.





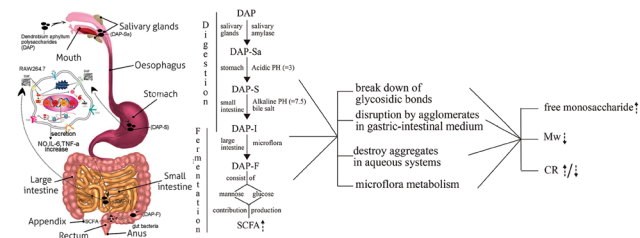


Fig. 6 The flow chart of gastric-intestinal digestion and fermentation process of DAP consumption on human GI-tract and related variation.

during the DAP fermentation process, but the tendency for their generation was confirmed by our results.

### 3.6 Carbohydrate contribution for SCFA production

Many studies have shown that improving the monosaccharide composition of polysaccharides significantly impacts the properties of SCFAs.<sup>6,39</sup> Different types of monosaccharides varied the types and amounts of SCFAs; for example, the formation of acetic acid was largely attributed to non-starch, resistant starches, and certain oligosaccharides.<sup>10</sup> When focusing on DAP fermentation, the generation of different types of SCFAs was affected by mannose and glucose contents (Fig. 5). Because increases in *i*-butyric acid and *i*-valeric acid after fermentation were not significant, only four types of SCFA, butyric acid, valeric acid, propionic acid, and acetic acid, were analyzed for their monosaccharide contribution. As the data shows, the fermentation time was not significantly related to the production of these SCFAs (Fig. 5D). By calculating the content of SCFAs produced when fermented with mannose or glucose only, we found that mannose was the prominent monosaccharide that promoted the generation of SCFA. However, it has been reported that glucose was the common major carbohydrate source contributing to the production of SCFAs.<sup>40,41</sup> Considering that the amounts of mannose were higher than those of glucose in DAP (molar ratio 2.48 : 1), our results agreed with those reported above.

## 4. Conclusion

The polysaccharide extracted from *D. aphyllum* was treated continuously with artificially simulated salivary, gastric, and intestinal digestion, and subsequently fermented in human fecal medium. A detailed flow chart (Fig. 6) shows the specific variations of each substance. To sum up briefly, salivary amylase showed no influence on DAP. However, the molecular weight decreased dramatically during the first 0.5 h of gastric digestion due to the acidic pH conditions, and then reduced steadily until it was undetectable during the subsequent GI tract consumption. The content of the reducing sugars increased steadily during GI digestion, indicating that the mode of molecular weight loss was due to breakage of glycosidic bonds. Meanwhile, the reducing sugar content increase and decrease during the fermentation was caused by the combined effects of degradation and utilization by fecal microbiota. Only released free mannose was detectable during the first 12 h of

fermentation, which was contributed by the fecal microbiota metabolism. In terms of the fermentation pattern, the pH dropped significantly due to the formation of six types of SCFA, which were produced from mannose and glucose in different proportions. The above results show that polysaccharides extracted from *D. aphyllum* can be digested by the GI tract and are physiologically active in the human large bowel by lowering the pH of the large intestinal environment and promoting the production of SCFAs. This is the first report of artificial simulation of GI tract consumption *in vitro* of DAP, and may provide information on the *in vitro* digestion of other carbohydrates. However, because this study only stimulated the *in vitro* GI digestion and microflora fermentation of DAP, the relevant variations of bioactivity and the characterization of intestinal absorption and *in vivo* digestion are still unclear, and therefore further studies are needed.

## Conflicts of interest

There are no conflicts to declare.

## References

- 1 L. Wang, W. U. Zi-Jian, A. G. Liu and L. I. Jian-Ying, *Food Res. Dev.*, 2013, **34**(6), 21–24.
- 2 S. S. Ferreira, C. P. Passos, P. Madureira, M. Vilanova and M. A. Coimbra, *Carbohydr. Polym.*, 2015, **132**, 378.
- 3 N. Binns, *Probiotics Prebio Gut Microbio*, 2013.
- 4 A. Barcenilla, S. E. Pryde, J. C. Martin, S. H. Duncan, C. S. Stewart, C. Henderson and H. J. Flint, *Appl. Environ. Microbiol.*, 2000, **66**, 1654.
- 5 U. S. Ramasamy, K. Venema, H. Gruppen and H. A. Schols, *Bioact. Carbohydr. Diet. Fibre*, 2014, **4**, 48–57.
- 6 M. C. Jonathan, J. J. G. C. v. d. Borne, P. V. Wiechen, C. S. D. Silva and H. A. Scholsa, *Food Chem.*, 2012, **133**, 889–897.
- 7 C. M. Sawicki, K. A. Livingston, M. Obin, S. B. Roberts, M. Chung and N. M. Mckeown, *Nutrients*, 2017, **9**, 125.
- 8 M. H. M. C. V. Nuenen, K. Venema, J. C. J. V. D. Woude and E. J. Kuipers, *Dig. Dis. Sci.*, 2004, **49**, 485–491.
- 9 G. Bosch, W. F. Pellikaan, P. G. Rutten, V. D. P. Af, M. W. Versteegen and W. H. Hendriks, *J. Anim. Sci.*, 2008, **86**, 2979–2989.
- 10 S. Macfarlane and G. T. Macfarlane, *Proc. Nutr. Soc.*, 2003, **62**, 67.
- 11 J.-L. Hu, S.-P. Nie, C. Li and M.-Y. Xie, *Food Hydrocolloids*, 2013, **33**, 384–392.
- 12 Å. Henningson, I. Björck and M. Nyman, *Food Nutr. Res.*, 2001, **45**.
- 13 T. B. Ng, J. Liu, J. H. Wong, X. Ye, S. C. W. Sze, T. Yao and K. Y. Zhang, *Appl. Microbiol. Biotechnol.*, 2012, **93**, 1795–1803.
- 14 X. M. Zi, C. L. Sheng, U. M. Goodale, S. C. Shao and J. Y. Gao, *Mycorrhiza*, 2014, **24**, 487–499.
- 15 J. M. Wong, S. R. De, C. W. Kendall, A. Emam and D. J. Jenkins, *J. Clin. Gastroenterol.*, 2006, **40**, 235.



- 16 R. Crittenden, S. Karppinen, S. Ojanen, M. Tenkanen, R. Fagerström, J. Mättö, M. Saarela, T. Mattila-Sandholm and K. Poutanen, *J. Sci. Food Agric.*, 2002, **82**, 781–789.
- 17 H. Liu, J. Ma, F. Gong, F. Wei, X. Zhang and H. Wu, *Int. J. Food Sci. Technol.*, 2017, DOI: 10.1111/ijfs.13695.
- 18 J. L. Hu, S. P. Nie, F. F. Min and M. Y. Xie, *Carbohydr. Polym.*, 2013, **92**, 1143.
- 19 C. Chen, B. Zhang, X. Fu, L. J. You, A. M. Abbasi and R. H. Liu, *Food Hydrocolloids*, 2016, **58**, 171–178.
- 20 I. Asano, K. Hamaguchi, S. Fujii and H. Iino, *Food Sci. Technol. Res.*, 2003, **9**, 62–66.
- 21 N. L. Mkandawire, S. A. Weier, C. L. Weller, D. S. Jackson and D. J. Rose, *LWT-Food Sci. Technol.*, 2015, **62**, 662–667.
- 22 F. Sánchez-Patán, E. Barroso, d. W. T. Van, A. Jiménez-Girón, P. J. Martín-Alvarez, M. V. Moreno-Arribas, M. C. Martínez-Cuesta, C. Peláez, T. Requena and B. Bartolomé, *Food Chem.*, 2015, **183**, 273.
- 23 C. J. V. Nevel, N. A. Dierick, J. A. Decuyper and S. M. D. Smet, *Arch. Anim. Nutr.*, 2006, **60**, 477.
- 24 F. Bianchi, M. Dall'Asta, R. D. Del, A. Mangia, M. Musci and F. Scazzina, *Food Chem.*, 2011, **129**, 200–205.
- 25 S. M. V. Ruth and J. P. Roozen, *Food Chem.*, 2000, **71**, 339–345.
- 26 B. P. Thornton, V. Větvicka, M. Pitman, R. C. Goldman and G. D. Ross, *J. Immunol.*, 1996, **156**, 1235–1246.
- 27 G. D. Ross, *Immunol. Res.*, 2002, **25**, 219–227.
- 28 W. Wei, L. Feng, W. R. Bao, D. L. Ma, C. H. Leung, S. P. Nie and Q. B. Han, *Planta Med.*, 2016, **64**, 881.
- 29 C. C. Maningat and P. A. Seib, *Cereal Chem.*, 2010.
- 30 W. Li, Q. Wang, S. W. Cui, X. Huang and Y. Kakuda, *Food Hydrocolloids*, 2006, **20**, 361–368.
- 31 B. J. Savary, A. T. Hotchkiss, M. L. Fishman, R. G. Cameron and R. G. Shatters Development of a Valencia Orange Pectin Methylesterase for Generating Novel Pectin Products, in *Advances in Pectin and Pectinase Research*, ed. F. Voragen, H. Schols and R. Visser, Springer, Dordrecht 2003.
- 32 A. Thorburn, J. Muir and J. Proietto, *Metab., Clin. Exp.*, 1993, **42**, 780–785.
- 33 A. G. Oomen, A. Hack, M. Minekus, E. Zeijdner, C. Cornelis, G. Schoeters, W. Verstraete, T. Van de Wiele, J. Wragg and C. J. M. Rompelberg, *Environ. Sci. Technol.*, 2002, **36**, 3326–3334.
- 34 S. A. Hughes, P. R. Shewry, L. Li, G. R. Gibson, a. M. L. Sanz and R. A. Rastall, *J. Agric. Food Chem.*, 2007, **55**, 4589–4595.
- 35 Y. Peng and L. Zhang, *J. Biochem. Biophys. Methods*, 2003, **56**, 243–252.
- 36 Q. Wang, X. Huang, A. Nakamura, W. Burchard and F. R. Hallett, *Carbohydr. Res.*, 2005, **340**, 2637–2644.
- 37 U. Farooq, M. Mohsin, X. Liu and H. Zhang, *Trop. J. Pharm. Res.*, 2013, **12**, 189–194.
- 38 J. A. Arcila, S. A. Weier and D. J. Rose, *Food Res. Int.*, 2015, **74**, 217–223.
- 39 J. L. Hu, S. P. Nie, F. F. Min and M. Y. Xie, *J. Agric. Food Chem.*, 2012, **60**, 11525–11532.
- 40 S. Karppinen, K. Liukkonen, A. M. Aura, P. Forssell and K. Poutanen, *J. Sci. Food Agric.*, 2000, **80**, 1469–1476.
- 41 A. Pihlantoleppala, *Trends Food Sci. Technol.*, 2000, **11**, 347–356.

