

Cite this: *J. Mater. Chem. A*, 2017, 5, 16105Received 31st March 2017  
Accepted 15th May 2017

DOI: 10.1039/c7ta02807e

rsc.li/materials-a

# Nanocellulose-based foams and aerogels: processing, properties, and applications

Nathalie Lavoine and Lennart Bergström \*

Nanocellulose is a renewable and biocompatible nanomaterial with a high strength low density and tunable surface chemistry. This review summarizes the main processing routes and significant properties of nanocellulose-based foams and aerogels. Challenges, such as how to produce long-term stable wet foams or how to avoid structural collapse of the material during solvent removal using e.g. supercritical drying, are discussed. Recent advances in the use of ice templating to generate iso- or anisotropic foams with tunable mechanical and thermal properties are highlighted. We illustrate how the porous architecture and properties of nanocellulose-based foams and aerogels can be tailored for applications in e.g. thermal insulation and energy storage.

## 1. Introduction

Cellulose is a homopolysaccharide consisting of a linear chain of linked anhydroglucose units (AGU).<sup>1</sup> The three hydroxyl groups on each AGU enable the cellulose chains to assemble with each other, determining e.g. the formation of fibrillar and semicrystalline species.<sup>2</sup> Individual cellulose molecules are brought together into larger units, called elementary fibrils or microfibrils, which have a diameter of 3–4 nm and a length

estimated to be over 1–2  $\mu\text{m}$ . Each microfibril is composed of nano-sized and highly crystalline rod like fragments, referred to as cellulose nanocrystals (CNC).<sup>3</sup> The microfibrils are packed into larger units, referred to as macrofibrils, with diameters ranging from 15 to 60 nm, which are in turn assembled into the familiar cellulose fibre (diameters 20–50  $\mu\text{m}$ ; lengths 1–4 mm). Cellulose nanofibrils (CNF) is a term commonly used to denote both the microfibrils and the macrofibrils.<sup>4</sup>

Nanocellulose in the form of CNC and CNF has been the focus of a significant research interest during the last two decades. Nanocellulose is an abundant and renewable nanomaterial that combines a low density, high strength and

Department of Materials and Environmental Chemistry, Stockholm University, Svante Arrhenius väg 16C, SE-106 91 Stockholm, Sweden. E-mail: lennart.bergstrom@mmk.su.se



Nathalie Lavoine holds an engineering degree from the International Engineer School of Paper, Print Media, and Biomaterials (Grenoble INP-Pagora, France). After completing her PhD in Materials Science and Process Engineering at the Laboratory of Pulp and Paper Science (France) in 2013, she joined for two years the research group of Prof. Isogai at the University of Tokyo (Japan). She

is now working as postdoctoral researcher at Stockholm University (Sweden) on the development of thermal insulating and fire retardant nanocellulose-based composite foams. Her research interests are in the area of nanocellulose-based advanced materials, active and intelligent packaging, and sustainable materials processing.



Lennart Bergström is a professor of Materials Chemistry and Dean of Chemistry at Stockholm University (Sweden). His research interests are in the area of sustainable materials processing, nanocellulose-based hybrids and foams, interparticle forces and colloidal processing, nanoparticle self-assembly, and developing materials for thermal insulation and gas separation. Lennart

Bergström is a Fellow of the Royal Society of Chemistry (2009). He is a recipient of the Jacob Wallenberg Materials Award (2007) and the Humboldt Research Award (2011). He is a member of the Royal Swedish Academy of Engineering Sciences (2013).



flexibility with chemical inertness and possibility to modify the surface chemistry.<sup>5</sup> The first stable colloidal suspension of CNC was produced in 1950, by Rånby and Ribí *via* acid hydrolysis of wood and cotton cellulose.<sup>6</sup> Sulphuric acid is commonly used for producing sulphonated CNC,<sup>7</sup> although CNC with other surface groups have been produced by hydrolyses with hydrochloric,<sup>8,9</sup> phosphoric,<sup>10</sup> hydrobromic,<sup>11</sup> and phosphotungstic<sup>12</sup> acids. The geometrical dimensions of CNC vary with the cellulosic source (cotton, ramie, tunicate, bacterial cellulose, softwood pulp, microcrystalline cellulose, *etc.*); but typically, the width is a few nanometres and lengths range from tenth nanometres to several micrometres. More information can be found in recent reviews.<sup>1,13</sup>

The production of CNF often requires chemical (carboxymethylation,<sup>14</sup> carboxylation,<sup>15</sup> quaternization,<sup>16</sup> *etc.*) or enzymatic<sup>17</sup> pretreatments to be carried out prior to mechanical treatment. The CNF dimensions depend on the processing conditions and possible post-treatments such as chemical modification or fractionation.<sup>18</sup> CNF have typically a diameter of 3–50 nm and a length of a few micrometres.

While early work on nanocellulose-based materials primarily focused on reinforced nanocomposites,<sup>19–22</sup> a broad range of applications are today being investigated, including *e.g.* food-packaging,<sup>23,24</sup> coatings,<sup>25</sup> biomedical,<sup>26,27</sup> and printed electronics<sup>28</sup> devices. Reviews on the production methods of nanocelluloses,<sup>18</sup> their rheology,<sup>29</sup> barrier properties,<sup>4</sup> chemical modifications<sup>2,30</sup> or self-assembly<sup>3</sup> are available for the interested readers.

The research interest in nanocellulose-based foams and aerogels is recent but rapidly growing. The combination of an ultralow density, tunable porous architecture and outstanding mechanical properties makes them of interest for a wide range of applications including *e.g.* biomedical scaffolds, thermal insulation and devices for storage and generation of energy.

This review aims to describe and discuss the processing, properties, and applications of nanocellulose-based foams and aerogels and highlights challenges that need to be overcome to enable the production of foams and aerogels with tailored properties for novel applications.

The terms “foam” and “aerogel” are commonly used interchangeably to describe nanocellulose-based porous materials. Previous reports have defined a (nanocellulose-based) aerogel as “a highly porous solid of ultra-low density and with nanometric pore sizes formed by replacement of liquid in a gel with gas”.<sup>31</sup> Foams are usually more broadly defined, commonly referred to as “solid porous materials with micrometric pore sizes”.<sup>32</sup> Throughout this review, when referring to nanocellulose-based foams or aerogels, we will then use the following definitions (Fig. 1):

– A nanocellulose(-based) foam is a multi-phase porous material with a porosity larger than 50% in which gas (*e.g.* air) is dispersed in a liquid, solid or hydrogel. The diameter of the bubbles (or the pore size) is usually larger than 50 nm.

– A nanocellulose(-based) aerogel is a mesoporous solid material (*i.e.* pore size in the range 2–50 nm) of high porosity (>90%).

## 2. Processing: from nanocellulose-based dispersions to porous solids

Processing of nanocellulose-based foams and aerogels involves two main steps (Fig. 1): (i) preparation of a gel or wet foam from a dispersion, and (ii) removal of the solvent by evaporation (oven drying), freeze drying, and supercritical drying preceded by solvent exchange. Fig. 1 also shows that foams can be structured directly from the dispersion by *e.g.* freezing of the solvents.

### 2.1. Preparation and stability of nanocellulose-based wet foams/gels

Gas bubbles can be introduced into a nanocellulose-based aqueous dispersion by either vigorous stirring or shaking (the so called Bartsch method), by pouring (the Ross-Miles method)<sup>33</sup> or sparging, *i.e.* by bubbling air into the dispersion (the Bikerman method).<sup>34</sup> Gas bubbles can also be created by desorption or decomposition of added compounds, so called foaming agents.<sup>35</sup>



Fig. 1 From nanocellulose to nanocellulose-based foams and aerogels: terminology and processing.



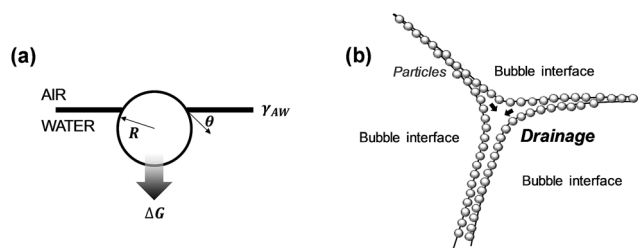


Fig. 2 Particle-stabilized foams: (a) particle at an air/water interface, (b) particle-stabilized foam lamella (adapted from Hunter *et al.*<sup>38</sup>).

Coalescence, partitioning and creaming of the inherently unstable gas bubbles need to be avoided or delayed to yield wet foams that are stable over a sufficient time. Foams drain, coarsen, and finally collapse when the films between the bubbles rupture.<sup>36</sup> More details on foam stability mechanisms can be found in reviews of *e.g.* Lam *et al.*,<sup>37</sup> Hunter *et al.*,<sup>38</sup> Kaptay,<sup>39,40</sup> and Fameau *et al.*<sup>41</sup>

Surfactants are frequently used to stabilize wet foams.<sup>36</sup> Adsorption of surfactants to the air–water interface reduces the interfacial surface tension, can induce a disjoining pressure and improve the rigidity of the interfacial film. Most surfactant-stabilized foams, however, show a limited stability due to bubble disproportionation and coalescence caused by surfactant desorption.<sup>42</sup> Adsorption of particles to the air–water interface to form the so called Pickering foams has been shown to result in wet foams with a very high stability (Fig. 2).<sup>43</sup> Eqn (1) describes the energy required to remove adsorbed spherical particles from an interface<sup>38</sup> (here, air/water interface):

$$\Delta G = \pi R^2 \gamma_{AW} (1 \pm \cos \theta)^2 \quad (1)$$

where  $R$ ,  $\gamma_{AW}$ ,  $\theta$  represent the radius of the particle, the air–water interfacial tension, and the three-phase contact angle, respectively (Fig. 2a). According to eqn (1), the detachment

energy is the largest when  $\theta = 90$ , but maximum stability is often found for contact angles between  $60$  and  $90^\circ$  for particle sizes ranging from  $10$  nm to  $30$   $\mu\text{m}$ .<sup>37,44</sup>

Thinning of the foam lamella by drainage and evaporation increases the probability of film rupture and bubble coalescence. The particle size, contact angle, and surface coverage have a strong influence on the foam stability.<sup>44</sup> Smaller particles delay or eliminate coalescence more efficiently than larger and/or flocculated particles.<sup>37</sup>

Anisotropic particles with a high aspect ratio, such as nanocellulose, are expected to stabilize wet foams more efficiently than spherical particles, because of the higher surface coverage and the entangled particle network formed around the gas bubbles.<sup>45</sup>

Wet nanocellulose-based foams that displayed long-term stability have been obtained by vigorous stirring of an aqueous dispersion of TEMPO-oxidized CNF and a non-ionic surfactant (Fig. 3a).<sup>42</sup> The stability of the CNF/surfactant foams after heating was improved by reinforcing the CNF network by slow release of calcium ions.<sup>42</sup>

Cervin *et al.*<sup>44,45</sup> succeeded in forming stable CNF wet foams after adsorbing either octylamine or decylamine (two amine-functionalized surfactants) onto the CNF surface (Fig. 3b). The partially hydrophobic CNF adsorbed onto the air–water interface and promoted the formation of a thick entangled CNF layer onto the gas bubble surface. Cervin *et al.*<sup>45</sup> showed that foams with higher stability were obtained when only  $1/3$  of the total charges of the CNF was screened by octylamine, compared to foams where 3 times more octylamine was added, corresponding to a 1-to-1 charge ratio. This suggests that the electrostatic component of the disjoining pressure also plays a role in the foam stability; indeed, increasing the salt concentration decreased the wet foam stability.<sup>45</sup> Hence, while increasing the hydrophobicity of the nanocellulose particles promotes accumulation of CNF at the air/water interface, it is also essential to maintain a sufficient charge density on the surface of the



Fig. 3 Wet nanocellulose-based foams stabilized by (a) a non-ionic surfactant,<sup>42</sup> (b) partially hydrophobic CNF<sup>44</sup> and (c) methylcellulose and CNC.<sup>46</sup>



Table 1 Processing of nanocellulose-based foams and aerogels

Feedstock			Processing			Porous solids	Ref
Nanocellulose <sup>a</sup>	Matrix/fillers	Post-modification	Pre-step <sup>c</sup>	Freezing	Drying <sup>c</sup>		
Carboxymethyl-/TEMPO-CNF	Octyl-/decylamine	—	Mechanical stirring	—	Oven	Foam	44, 45 and 61
TEMPO-CNF	Surfactant, CaCO <sub>3</sub> , GA <sup>b</sup>	—	—	—	—	—	42
CNC	Methylcellulose	—	—	—	(Oil bath)	—	46
Neat/modified CNC	—	—	Stirring; freezer; SE	Supercritical drying	—	Aerogel	53 and 65
BNC	—	—	SE	—	—	—	54 and 69
Enzy-CNF	Stearoyl grafting	—	—	—	—	—	70
TEMPO-CNF	—	—	—	—	—	—	49 and 63
TEMPO-CNF	—	—	—/SE	DQ liquid N <sub>2</sub>	FD	Foam	49
CNF	—	—	—	DQ liquid N <sub>2</sub> /ethanol	—	—	71
Enz-/Holo-CNF	Starch	—	Fridge/freezer	Freezer	—	—	72
Enz-/TEMPO-CNF	Xyloglucan	—	—	DQ liquid N <sub>2</sub>	—	—	31, 73 and 74
TEMPO-CNF	—	—	Stirring at -18°C	DQ in various liquid solvents (e.g. acetone)	—	—	32
TEMPO-/CHO-CNF	Octylamine	—	—	DQ liquid N <sub>2</sub>	—	—	61
TEMPO-CNF	PEI <sup>b</sup>	—	—	—	—	—	75
CNC	—	—	—	DQ liquid N <sub>2</sub> /ethanol	—	—	—
CNC	Polyvinyl alcohol	—	—	Freezer/DQ liquid N <sub>2</sub>	—	—	76
BNC	Zinc oxide	—	SE	FD	—	—	77
Enz-CNF	Starch	—	Fridge	Freezer	—	—	78 and 79
Enz-CNF	Starch	—	Fridge	Dry ice CO <sub>2</sub> plate	FD	Foam	78 and 79
TEMPO-CNF/CNC	GO <sup>b</sup> , Sepiolite, BA <sup>b</sup>	—	—	Freeze-casting	—	—	60 and 80
TEMPO-CNF	GO <sup>b</sup> or lignin/hemicellulose or VTMS <sup>b</sup>	—	—	—	FD	—	81
CNF	—	Fluorosilanes/TiO <sub>2</sub>	—	FD	FD	Foam	82–84
—	PE resin <sup>b</sup>	—	—	Freezer/liquid N <sub>2</sub> Spray	FD + oven	—	85 and 86
—	Soy protein	—	Fridge	Freezer	FD	—	87
—	CNT <sup>b</sup>	—	—	DQ liquid N <sub>2</sub> /propane	FD	—	88
—	—	Palmitoyl	SE	FD	—	—	89 and 90
—	MTMOS <sup>b</sup>	—	—	DQ liquid N <sub>2</sub>	—	—	91
—	PEI <sup>b</sup>	—	—	—	—	—	92
—	Resin	TEOS + TMCS <sup>b</sup> / <i>n</i> -hexane	—	DQ liquid N <sub>2</sub>	FD + oven	—	93
CHO-CNF	Collagen	—	—	Freezer	FD	—	94
Enzy-/TEMPO-CNF	—	—	SE	DQ liquid N <sub>2</sub>	—	—	66 and 95–97
Enzy-CNF	MMT <sup>b</sup>	—	Fridge	—	—	—	79
TEMPO-CNF	Hydroxyapatite	—	—/SE	—	—	—	98
TEMPO-CNF	AgNO <sub>3</sub>	—	—	DQ ethanol	—	—	99
—	—	—	—	Freezer/FD/DQ liquid N <sub>2</sub>	—	—	62, 68, 100 and 101
—	Nanozeolites	—	—	Freezer	—	—	102
—	GO nanosheets, CNT <sup>b</sup>	Heating	—	Dry ice/acetone	—	—	103
—	—	Pyrrole, AgNO <sub>3</sub> , Fe(NO <sub>3</sub> ) <sub>3</sub>	—	DQ liquid N <sub>2</sub> + freezer	—	—	104
Carboxymethyl-CNF	—	Silanes	—	DQ liquid N <sub>2</sub>	—	—	64 and 105
—	BTCA, NaPO <sub>2</sub> H <sub>2</sub>	PEI/PAH-PAA/CNT <sup>b</sup>	—	—	FD + oven	—	106 and 107
BNC	—	TMCS <sup>b</sup>	SE	DQ liquid N <sub>2</sub>	—	—	108

<sup>a</sup> Carboxymethyl-CNF, Enzy-CNF, CHO-CNF, TEMPO-CNF, and Holo-CNF refer to carboxymethylated, enzymatic-pre-treated, aldehyde-modified, TEMPO-oxidized, and holocellulose CNF, respectively. BNC refers to bacterial nanocellulose. <sup>b</sup> GA = gluconic acid; PEI = polyethylenimine; PAH = poly(allylamine hydrochloride); PAA = polyacrylic acid; CNT = carbon nanotubes; GO = graphene oxide; BA = boric acid; PE resin = polyamide epichlorohydrin resin; MTMOS = methyltrimethoxysilane; TEOS = tetraethylorthosilicate; TMCS = trimethylchlorosilane; MMT = montmorillonite clay; VTMS = vinyltrimethoxysilane. <sup>c</sup> SE = solvent exchange (usually from water to either *tert*-butanol or ethanol); FD = freeze-drying; DQ = direct quenching.



modified particles to prevent flocculation and induce a repulsive disjoining pressure.<sup>37</sup>

A recent report described a straightforward procedure to produce aqueous wet foams based on unmodified CNC and methylcellulose (MC) (Fig. 3c).<sup>46</sup> It was suggested that MC accumulated at the air/water interface and that adsorption of CNC to MC stabilized the interface and inhibited MC desorption. The MC/CNC-foams displayed a good long-term stability, also at elevated temperatures.<sup>46</sup>

Porous materials have also been prepared from Pickering water-in oil emulsions by polymerization<sup>47</sup> or crosslinking of the continuous phase. Removal of the aqueous phase by *e.g.* freeze-drying<sup>48</sup> resulted in dry foams where the porosity and pore size distribution were a replica of the initial emulsion droplets.

Finally, nanocellulose (hydro)gels can simply be prepared by physical entanglement *e.g.* by increasing the solid content of the aqueous nanocellulose dispersions,<sup>31</sup> or by reducing the colloidal stability by *e.g.* changing the pH.<sup>49</sup>

## 2.2. Preparation of solid foams and aerogels

The main challenge in the production of nanocellulose-based porous solids is to maintain the porous structure during solvent removal. Evaporation of water from a porous material produces capillary pressure-induced stresses<sup>50</sup> that can deform the pores and result in warping and collapse or cracking.

Different drying techniques have been developed to avoid deformation or collapse of the porous network during solvent removal (Table 1). Nanocellulose-based porous solids have so far been produced using two main solvent-removal processes: (i) supercritical drying and (ii) ice sublimation; the latter being often combined with ice templating (IT).

**2.2.1. Supercritical drying of wet gels.** Supercritical drying is the traditional drying technique used for the formation of ultralight and porous solids, so called aerogels.<sup>51</sup> Substitution of the original solvent (usually water) by a supercritical fluid prevents the formation of a liquid/vapour interface, thus eliminating the formation of a meniscus and the generation of a capillary pressure during solvent removal. Carbon dioxide (CO<sub>2</sub>) is commonly used in supercritical drying, with an easily accessible critical temperature and pressure of 31.3 °C and 72.9 atm, respectively.

The supercritical fluid, *e.g.* carbon dioxide, is often immiscible with the original solvent, *e.g.* water. This requires that water is exchanged with an intermediate solvent, *e.g.* ethanol, prior to final exchange with carbon dioxide (Table 1). The pressure and decompression rate also need to be optimized for the specific system. An optimal pressure of 150 bar has, for example, been suggested for the preparation of porous alginate beads of uniform size,<sup>52</sup> whereas a pressure of 100 bar is commonly used for the production of nanocellulose-based aerogels.<sup>53,54</sup> In the case of alginate beads, a pressure of 100 bar was not high enough to form beads of regular size and smooth surface texture, suggesting that the pressure was too close to the critical point of the water/ethanol mixture.<sup>54</sup>

Rapid decompression can, according to Sanz-Moral *et al.*,<sup>55</sup> induce deformation of the aerogels due to too rapid expansion

of the carbon dioxide. Nanocellulose aerogels are usually produced using slow depressurization rates. Heath *et al.*<sup>53</sup> applied a depressurization rate of 5 bar min<sup>-1</sup> for 20 minutes to produce CNC aerogels, while Sakai *et al.*<sup>49</sup> supercritically dried TEMPO-CNF aerogels using a depressurization time of 60 minutes. However, supercritical drying is not extensively used (Table 1), mainly because of the high cost of the equipment and complexity of the process.

**2.2.2. Freezing and ice templating.** Freezing followed by sublimation of the frozen solvent is a commonly used method to prepare low-density nanocellulose-based foams and aerogels. Rapid freezing of the solvent, *e.g.* by rapid immersion of a dispersion in liquid nitrogen, can preserve the structure of the original dispersion. Slower freezing, however, results in segregation of the solvent and the dispersed phase, so called ice templating (IT).<sup>56,57</sup> Sublimation of the formed ice by *e.g.* freeze-drying avoids formation of a liquid/vapour interface and thus the creation of a capillary pressure that can deform or collapse the porous structure (Fig. 4a). This process is given different names, *e.g.* freeze-casting,<sup>56,58</sup> freeze-drying, lyophilization or cryodesiccation.<sup>59</sup>

Here, we will distinguish between homogeneous freezing which consists in rapid freezing of a gel, from unidirectional ice templating where the orientation and (slow) growth of the ice crystals are controlled, resulting in a structured frozen dispersion (Fig. 5). The frozen solvent is removed by sublimation irrespective of how the dispersion has been frozen. Ice sublimation is commonly carried out using a freeze-dryer or a vacuum oven (Table 1), at low temperature (−55 °C) and pressure (≤0.02 mbar).

**Homogeneous freezing.** The freezing step usually investigated in homogeneous freezing consists in either dipping the aqueous nanocellulose-based suspension/gel in a liquid nitrogen bath or placing it in a freezer (Table 1). Rapid freezing results in an unaffected intrinsic gel structure of the wet dispersion, while slower freezing can result in segregation of the dispersed phase from the growing ice crystals. Fast freezing of aqueous CNF dispersions in liquid ethanol (−114 °C) resulted in small ice crystals and a final pore size of 1–60 nm, while

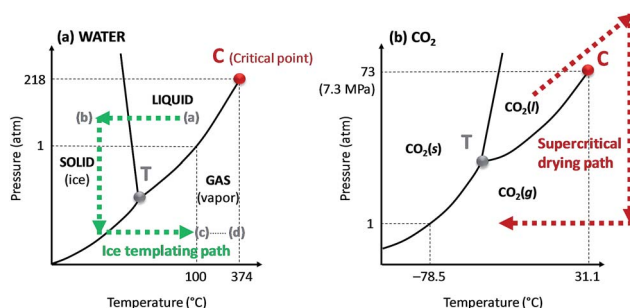


Fig. 4 Phase diagrams of (a) water and (b) carbon dioxide (CO<sub>2</sub>). The critical and triple points are represented on the diagram by the letter C and T, respectively. The phase evolution of water and CO<sub>2</sub> during ice sublimation and supercritical drying processes, respectively, are shown by the dashed arrows. The (a) to (d) steps on the water phase diagram corresponds to the ice templating principles detailed in Fig. 5.



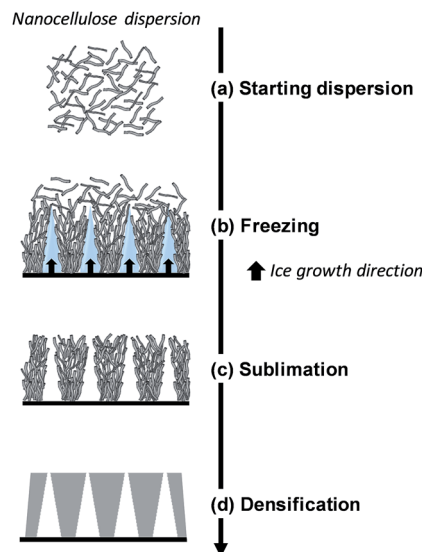


Fig. 5 Schematic diagram of directional ice-templating of nanocellulose dispersion (adapted from Deville<sup>56</sup>).

slower cooling in liquid benzonitrile ( $-13\text{ }^{\circ}\text{C}$ ) led to larger pores after ice sublimation.<sup>32</sup>

**Directional ice templating.** Subjecting the freezing dispersion to a directional thermal gradient results in directional ice templating (Fig. 5).<sup>57</sup> While homogeneous freezing leads to isotropic foams, often referred to as cellular foams with a 3D cell structure (Fig. 6a and c), unidirectional IT produces honeycomb structures, where 2D pores/cells are aligned parallel to the freezing direction (Fig. 6b and d).<sup>60</sup> One advantage of unidirectional IT is the repeatability of the process: for similar operating conditions (cooling rate and temperature) and nanocellulose-based gel, a same porous structure can be achieved. Such a templating method, however, may require specific

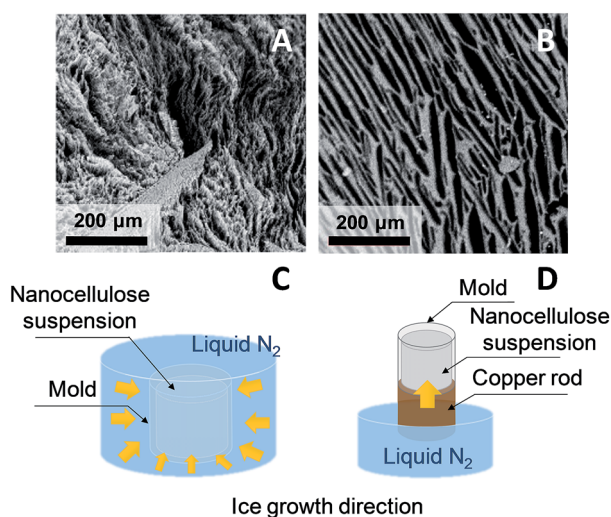


Fig. 6 SEM images of horizontal cross-section of CNF (A) and CNC (B) foams obtained by homogeneous freezing (C) and unidirectional ice templating (D), respectively (adapted from Munier *et al.*<sup>60</sup> Reproduced with the permission of ACS Publications).

equipment, and a simpler technique should therefore be considered for larger scale material.<sup>58</sup> Apart from controlling the freezing conditions, the anisotropic growth of ice crystals can be affected by an electromagnetic field,<sup>57</sup> which may also influence the redistribution and orientation of *e.g.* CNC or magnetic fillers.

### 3. Properties of nanocellulose-based solid foams and aerogels

#### 3.1. Density and porosity

Ultralight and highly porous nanocellulose-based solid foams and aerogels display densities ranging from 1 to  $200\text{ kg m}^{-3}$ ,<sup>61,62</sup> and the corresponding porosity can be higher than 99%. The bulk density of nanocellulose-based foams and aerogels depends on the initial solid concentration (Fig. 7), the possible expansion of the dispersion during the formation of the foam or structured gel, and shrinkage during solvent removal.

The volumetric shrinkage during solvent-exchange and/or solvent removal can also be altered by the particle concentration and interactions of the nanocellulose suspension.<sup>63–65</sup> When comparing TEMPO-CNF with Enz-CNF, Martoia *et al.*<sup>32</sup> observed that the foam shrinkage drastically increased below a critical CNF concentration,  $c^*$ , below which the entangled CNF networks lost their mechanical integrity. The  $c^*$  value for the highly charged TEMPO-CNF was much lower (0.2 wt%) than that of the weakly charged Enz-CNF (1 wt%). The formation of a percolative network is thus important to maintain the structure of the wet foam/gel during solvent removal and reduce the shrinkage. Crosslinking between nanocellulose may, similarly, reduce the foam/aerogel shrinkage during solvent removal.<sup>65</sup>

The density of particle-stabilized foams was found to depend on the octylamine/CNF ratio.<sup>44</sup> Adding more octylamine resulted in a reduction of the density of the dried foams.

Solvent exchange at low temperature ( $-20\text{ }^{\circ}\text{C}$ ) followed by supercritical  $\text{CO}_2$  drying can preserve the porous structure of the wet foam or gel but even under these conditions, some shrinkage (between 10 and 15%) of nanocellulose-based aerogels is often observed.<sup>49</sup>

Drying of wet nanocellulose-based foams is commonly performed in an oven at  $60\text{ }^{\circ}\text{C}$  with a perforated aluminum cover

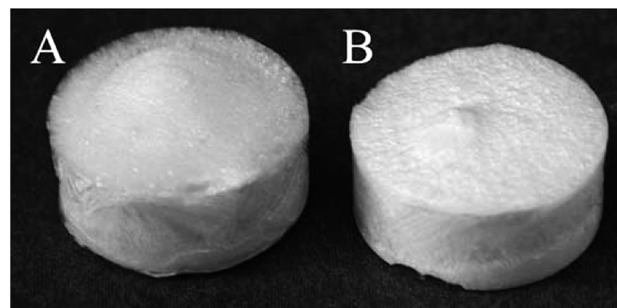


Fig. 7 Foams obtained by homogeneous freezing and freeze-drying of (A) 0.7 and (B) 1.1 wt% carboxymethylated-pre-treated CNF dispersions (reproduced with the permission of the Royal Society of Chemistry<sup>64</sup>).



over the wet foams to maintain a high humidity level.<sup>42,44</sup> Reduced convection and high moisture content promote a uniform moisture removal and minimize the drying stress within the foam, preventing it from collapsing and shrinking. Using forced drying, Cervin *et al.*<sup>44</sup> observed indeed a drastic collapse of the foam, while drying at 20 °C and 50% of relative humidity preserved the foam structure and density.

### 3.2. Specific surface area

High specific surface area (SSA) is desirable for foams used as *e.g.* insulators, electrodes, catalyst supports, and adsorbents.<sup>66</sup>

A straightforward way to increase the SSA of nanocellulose foams and aerogels is to avoid pore closure, *e.g.* by the replacement of water by *tert*-butanol (TBA).<sup>66,67</sup> Ishida *et al.*<sup>67</sup> reported that the SSA of tunicate CNC foams prepared by TBA solvent exchange ( $130 \text{ m}^2 \text{ g}^{-1}$ ) was significantly higher than that of foams prepared by freeze-drying ( $25 \text{ m}^2 \text{ g}^{-1}$ ). Similarly, aerogels with a very high SSA (maximum of  $284 \text{ m}^2 \text{ g}^{-1}$ ) based on Enz-CNF and TEMPO-CNF were obtained after successive water to TBA exchanges.<sup>66</sup> Nemoto *et al.*<sup>68</sup> highlighted that the good dispersibility of nanocellulose in the solvent mixture is important to produce foams/aerogels with large SSA. By optimizing the amount of added TBA in the aqueous TEMPO-CNF dispersion, they produced TEMPO-CNF foams with  $\text{SSA} > 310 \text{ m}^2 \text{ g}^{-1}$  by homogeneous freezing.<sup>68</sup>

The largest SSA value reported so far for nanocellulose-based foams/aerogels is in the range  $500\text{--}600 \text{ m}^2 \text{ g}^{-1}$  and was obtained by supercritical  $\text{CO}_2$  drying of 0.2–2 wt% TEMPO-CNF gels.<sup>63</sup> The SSA of these aerogels did not vary with the density (ranging from 0.001 to  $0.003 \text{ g cm}^{-3}$ ), suggesting that the nanofibers did not aggregate or form dense bundles as the concentration increased.<sup>63</sup> Sakai *et al.*<sup>49</sup> confirmed that supercritical  $\text{CO}_2$  drying of TEMPO-CNF resulted in much higher SSA ( $=300\text{--}350 \text{ m}^2 \text{ g}^{-1}$ ) than TEMPO-CNF foams produced by homogeneous freezing using water ( $\text{SSA} = 20 \text{ m}^2 \text{ g}^{-1}$ ) or TBA ( $\text{SSA} = 160 \text{ m}^2 \text{ g}^{-1}$ ) as solvent.

### 3.3. Pore size and morphology

The pore size and morphology of nanocellulose-based foams and aerogels have a strong influence on *e.g.* the mechanical and thermal properties. The porous architecture is strongly influenced by the processing route, but also by the particle size and shape, and interactions.

Nanocellulose-based aerogels with small (<50 nm) and open pores are commonly obtained using supercritical drying.<sup>49</sup> Ice templating of nanocellulose-based gels/dispersions templates the porous materials with open pores of diameter  $\geq 50 \text{ nm}$ , where pores are a replica of the solvent crystals.<sup>57</sup> A rapid cooling rate can however lead to a more homogeneous fibrillar structure with smaller pores (between 1 and 60 nm) and a less pronounced sheet-like structure (Fig. 8).<sup>32</sup> The nanocellulose gel concentration affects in particular the anisotropy ratio and size of the cells.<sup>78</sup> A decrease in pore size and a more regular microstructure is commonly observed with an increasing particle concentration.<sup>74,81</sup> Pores of elongated and circular cross-section were observed for CNC and CNF foams produced by

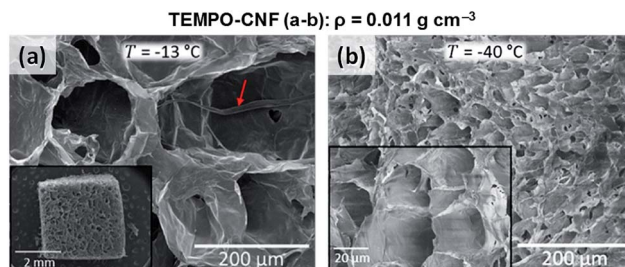


Fig. 8 Influence of the freezing temperature on the foam morphology and pore structure obtained by homogeneous freezing (adapted from Martoia *et al.*<sup>32</sup> Reproduced with the permission of Elsevier).

unidirectional IT, respectively, which suggests that the ability of CNF to entangle and form a gel can restrict the growth of lamellar ice crystals.<sup>60</sup> Reducing the colloidal stability of carboxylated CNF and CNC aqueous dispersions by addition of NaCl or reducing the pH resulted in a significant reduction in the degree of alignment of the nanocellulose particles in the walls of foams obtained by unidirectional IT.<sup>60</sup>

Use of fillers or any other polymeric matrix may also influence the final architecture of the porous solid.<sup>102</sup> The addition of starch, for example, reduced the pore size of nanocellulose/starch composite foams by approximately 65%.<sup>78</sup>

### 3.4. Mechanical properties

The compressive deformation of cellular solids occurs in three main stages (Fig. 9): (i) a linear elastic behaviour caused by the cell wall bending and defined by an apparent Young's modulus,  $E$ , up to an initial apparent yield stress,  $\sigma_y$ ; (ii) a plateau region, which marks the plastic deformation due to the collapse of the cells (or elastic buckling); and (iii) a densification regime, where the opposing cell walls approach each other and eventually touch. At a certain critical strain, the material shows considerable stiffening due to densification of the porous structure. Differences in mechanical properties between nanocellulose-based 2D honeycombs and 3D foams were assessed by Prakhobna *et al.*<sup>73</sup> 2D honeycombs showed superior mechanical properties when tested in the longitudinal direction, as all the

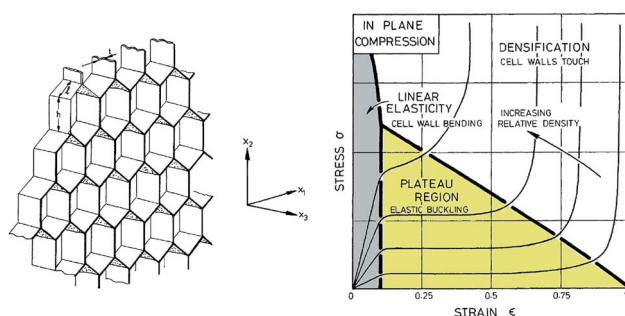


Fig. 9 (Left) A honeycomb with hexagonal cells and plane directions. (Right) A schematic diagram for honeycomb of increasing relative density loaded in compression in the  $X_3$  direction, showing the three stages of compressive deformation (adapted from Gibson and Ashby<sup>109</sup>).



material was arranged along the freezing direction (see  $X_3$  direction on Fig. 9). With more isotropic cell shape, 3D foams exhibited lower longitudinal but higher transverse Young's modulus values than those of longitudinal and transverse-tested honeycombs, respectively.

The compressive behaviour of nanocellulose-based foams and aerogels is commonly described by eqn (2):<sup>74,109</sup>

$$E \propto \left( \frac{\rho^*}{\rho_s} \right)^n \quad (2)$$

where  $E$  is the elastic modulus and  $n$  is the scaling exponent and  $\rho^*/\rho_s$  is the relative density.

Honeycomb and open-cell foam models predict  $n = 1$  and  $n = 2$ , respectively,<sup>79,109</sup> but many materials exhibit much higher exponents.<sup>32,63</sup> The scaling exponent of TEMPO-CNF foams ( $n = 2.29$ ) obtained by direct quenching at  $-68$  °C suggests that TEMPO-CNF foams have a microstructure and deformation mechanism similar to open-cell foams (Fig. 10).<sup>32</sup> In contrast, the scaling exponent of Enz-CNF foams ( $n = 3.11$ ) proved to be in good agreement with previous studies on cellulose or silica aerogels ( $3 < n < 4$ ).<sup>110,111</sup>

The work to failure or energy absorption of nanocellulose-based foams has also been assessed for packaging application. Although few studies reported this property, the work to failure is usually found to increase with increasing relative density of the material.<sup>74,109</sup>

### 3.5. Thermal, electrical, and acoustic properties

Foams and aerogels have low thermal conductivity, low dielectric loss and the ability to absorb sound. The acoustic properties of nanocellulose-based foams and aerogels have been assessed for CNF and CNC foams obtained by homogeneous freezing.<sup>62</sup> At low frequencies ( $<1000$  Hz), the sound absorption ability was poor, whereas at 4000 Hz, mechanically-treated CNF and TEMPO-CNF foams reached absorption ratios of 57 and 54%,

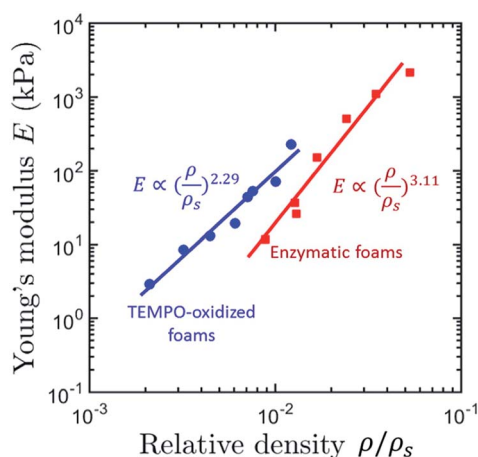


Fig. 10 Apparent compression modulus,  $E$ , as a function of the relative density,  $\rho/\rho_s$  of TEMPO- and Enz-CNF foams obtained by homogeneous freezing (quenching temperature of  $-68$  °C) (adapted from Martoia *et al.*<sup>32</sup> Reproduced with the permission of Elsevier).

respectively. The measured sound-absorption ratios of the 3D foams were larger than wood-based panels such as particle-board and plywood.<sup>109</sup>

Neat nanocellulose foams/aerogels display a very low electrical conductivity and are suitable for devices that must transmit microwaves such as radomes, which are sandwich structures with a foam core that should display a low dielectric loss.<sup>104</sup> Using nanocellulose in energy storage devices or thermoelectric materials, however, requires that the electrical conductivity is enhanced. Conductive materials such as polypyrrole<sup>104</sup> or carbon nanotubes have been added to increase the electrical conductivity of the nanocellulose-based hybrids and composites.<sup>106</sup>

The thermal properties of nanocellulose-based foams and aerogels have been the focus of recent studies.<sup>49,63,80,102</sup> The thermal conductivity of a foam or an aerogel in air can be approximated by the sum of four contributions: (i) conduction through the solid; (ii) conduction through the gas; (iii) convection within the cells; and (iv) radiation through the cell walls and across the cell voids.<sup>63,109</sup>

The conduction through the gas is usually dominating while convection is assumed to be negligible for closed foams with cell sizes below 10 mm.<sup>109</sup> The gaseous contribution can be significantly reduced by narrowing the pore size to less than the mean free path of gas molecules in air (*ca.* 70–75 nm).<sup>63</sup>

The contribution of the solid phase usually scales with the bulk density of the aerogel. Kobayashi *et al.*<sup>63</sup> showed that TEMPO-CNF foams (produced by supercritical  $\text{CO}_2$  drying) exhibited a decrease in thermal conductivity from 0.04 to  $\approx 0.018$   $\text{W m}^{-1} \text{K}^{-1}$ , as the density decreased from 37 to  $\approx 17$   $\text{mg cm}^{-3}$ , respectively. Enhancing the interfacial thermal resistance of the material, or Kapitza resistance, can contribute to reduce the thermal conductivity of a composite material.

The radiative contribution to heat transfer at room temperature is usually considered to be small. However, it is generally found to increase with increasing cell size and to decrease with increasing relative density.<sup>109</sup> The radiative part of the thermal conduction can be reduced by including materials that strongly absorb infrared radiation such as carbonaceous materials. The addition of 10% graphene oxide in TEMPO-CNF/sepiolite/graphene oxide foams, for example, increased the mass attenuation coefficient in the mid-infrared range by 26%.<sup>80</sup>

The heat transfer properties of TEMPO-CNF foams and aerogels obtained by three different processes was recently reported and discussed.<sup>49</sup> Aerogels of high specific surface area and small pore size (around 30 nm) exhibited increasing thermal conductivities with increasing density. Surprisingly, the thermal conductivity of CNF foams with pore sizes ranging from few micrometres to 100 micrometres range decreased with increasing density of the foams. Reasons for such a thermal behaviour are still not completely established but the authors suggested that reduction of the pore size may not be the only way to reduce the thermal conductivity of cellular solids; creating microscale spaces with distinct partitions seems to be a more efficient approach.<sup>49</sup>

Wicklein *et al.*<sup>80</sup> showed that anisotropic nanocomposite foams of nanocellulose with sepiolite and graphene oxide





produced by directional ice templating displayed a very low radial thermal conductivity ( $0.015 \text{ mW m}^{-1} \text{ K}^{-1}$ ) in the direction perpendicular to the ice growth.

## 4. Applications

Nanocellulose-based porous materials have been investigated as absorbent materials,<sup>65,68,95,112,127</sup> templates for inorganic<sup>113,114</sup> or carbon porous materials,<sup>115–117</sup> gas membranes/filters,<sup>68,75</sup> and packaging materials.<sup>79,118</sup> This section reviews recent attempts to apply nanocellulose-based foams and aerogels as scaffolds in biomedical applications, for use in electrical devices and energy storage systems, and as thermal insulation and fire retardant materials.

### 4.1. Scaffolds for biomedical and pharmaceutical applications

3D cell culture scaffolds usually consist of a highly interconnected porous network that favours cellular infiltration and allows proper exchange of nutrients and metabolic waste throughout the cell culture scaffold.<sup>86</sup> To this end, bacterial nanocellulose has proven to be a promising candidate, mainly due to the durability of the bio-generated network.<sup>26</sup> Nanocellulose-based foams and aerogels have been shown to support growth and proliferation of cells.<sup>94,97</sup> Using 3D TEMPO-CNF aerogel scaffolds for cell cultures resulted in less than 5% of cell death after 72 h of cell growth.<sup>97</sup> An even lower cell death was observed when low charge density TEMPO-CNF ( $1.56 \text{ mmol g}^{-1}$  against  $2.04 \text{ mmol g}^{-1}$ ) was used to form the scaffolds. This suggests that modified nanocellulose can be considered as a biocompatible and non-toxic material.<sup>26</sup> Similarly, CNF aerogel microspheres facilitated 3T3 NIH cell attachment, penetration, differentiation, and proliferation within 2 weeks only.<sup>86</sup> Foams made from aldehyde-modified CNF crosslinked to collagen (2 to 7 wt%) with a good stability at different pH-values supported indeed better the growth and proliferation of cells compared with non-crosslinked foams.<sup>94</sup> Functionalized nanocellulose-based porous materials can also serve as antibacterial materials after addition of silver<sup>104</sup> or zinc oxide nanoparticles.<sup>77</sup>

Nanocellulose foams and aerogels have also been used for controlled drug delivery. The drug release profile can be tuned by varying the porous structure of the nanocellulose foam scaffolds and by controlling the drug/cellulose interactions.<sup>119,120</sup> For instance, adsorption of sodium salicylate (NaSA) on polyethylenimine-grafted CNF (PEI-CNF) foams enhanced the drug loading capacity by more than 20 times compared with that of neat CNF foams.<sup>92</sup> The PEI-CNF foams also exhibited pH- and temperature responsive properties: a much faster release was achieved at neutral pH and high temperature ( $50^\circ\text{C}$  against  $20^\circ\text{C}$ ).<sup>92</sup>

### 4.2. Electrical devices and nanocellulose-based energy storage systems

The low density, high strength and flexibility of nanocellulose foams and aerogels are of interest in electrical devices and

energy storage systems but usually require that the electrical conductivity is substantially increased. Functionalization of highly porous CNF foams with 4–7 wt% of doped polyaniline (PANI) resulted in electrical conductivity values ranging from  $7 \times 10^{-3}$  to  $4 \times 10^{-2} \text{ S cm}^{-1}$ .<sup>121</sup> The functionalization did not result in adverse effects on the structure and porosity of the entangled nanofiber network that provided a continuous percolative template for the conductive polymers. Similarly, using a dip-coating method, Zhou *et al.*<sup>104</sup> synthesized CNF/polypyrrole/silver nanoparticles hybrid foams. The electrical conductivity was lower than expected ( $0.5 \times 10^{-2} \text{ S cm}^{-1}$ ) suggesting that the silver nanoparticles were unable to form a continuous network. Compressing the functionalized foams between 30% to 70% resulted in a significant increase of the electrical conductivity from  $2 \times 10^{-2}$  to  $15 \times 10^{-2} \text{ S cm}^{-1}$ . The pore structure can also have a significant influence on the electrical conductivity; Wang *et al.*<sup>88</sup> showed that the electrical conductivity of CNF/carbon nanotube (CNT) foams produced by slow freezing (in liquid nitrogen) exhibited a higher electrical conductivity than foams obtained after rapid freezing in liquid propane (Fig. 11). The higher conductivity of the slowly frozen foams was related to the anisotropic, sheet-like pore architecture that resulted in a percolative CNF/CNT network.<sup>88</sup>

The Layer by Layer (LbL) assembly technique has also been used to produce conductive nanocellulose-based foams and aerogels. LbL assembly of functional polymers and nanoparticles was used to assemble a succession of thin films (from 5 to 10 bilayers of cationic and anionic polymers) on negatively charged carboxymethylated CNF aerogels.<sup>106</sup> LbL coatings of poly(3,4-ethylenedioxythiophene):poly(styrene sulfonate) (PEDOT:PSS) and single-wall carbon nanotubes (SWCNT) to the CNF aerogels resulted in an electrical conductivity of  $1.4 \times 10^{-5} \text{ S cm}^{-1}$  (for 10 bilayers) and  $1.2 \times 10^{-3} \text{ S cm}^{-1}$  (for 5 bilayers), respectively. The SWCNT/CNF aerogels were also used as

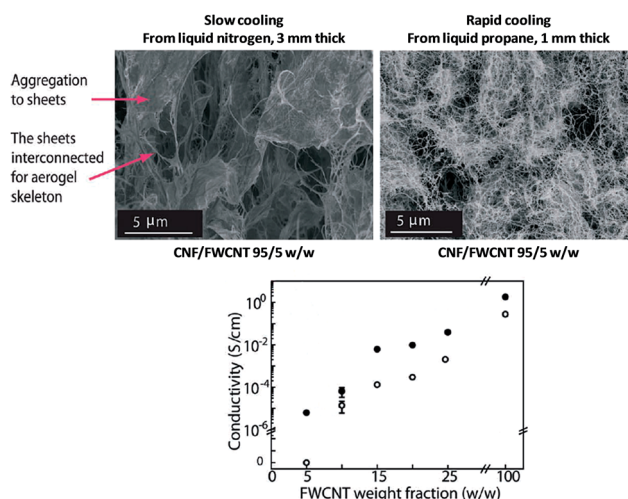


Fig. 11 Influence of cooling temperature on the electrical conductivity of CNF/FWCNT (few walled carbon nanotubes) foams produced by homogeneous freezing. The conductivity of foams frozen either in liquid nitrogen or in liquid propane are represented by the full black and hollow dots, respectively (adapted from Wang *et al.*<sup>88</sup> Reproduced with the permission of Wiley Online Library).



electrodes in an aqueous supercapacitor, resulting in a device with a capacitance estimated to  $419 \text{ F g}^{-1}$ ; a much higher value than previously reported for SWCNT coated paper substrates ( $200 \text{ F g}^{-1}$ )<sup>122</sup> or SWCNT LbL freestanding films ( $159 \text{ F g}^{-1}$ ).<sup>123</sup>

The LbL approach has also been used to assemble a 3D energy-storage device inside of a CNF aerogel.<sup>107</sup> Anionically charged CNF aerogels were produced by homogeneous freezing and cross-linked using butanetetracarboxylic acid (BTCA) and sodium hypophosphite ( $\text{NaPO}_2\text{H}_2$ ) to form wet-resilient aerogels.

LbL was used to deposit the first electrode on the CNF aerogels using a total of five bilayers of [COOH-functionalized CNT/polyethylenimine (PEI)] (see Fig. 12, left picture).<sup>106</sup> The separator was made of a 30-bilayer film of PEI/polyacrylic acid (PAA) (Fig. 12, middle picture).

The second electrode was then deposited, using five bilayers of PEI and COOH-functionalized SWCNT (Fig. 12, right picture).

The device displayed the typical square-shaped voltammograms for supercapacitors resulting from double-layer charging of a carbon surface, and a capacitance of  $25 \text{ F g}^{-1}$  over 400 cycles, comparable to traditional carbon-based supercapacitors.<sup>107</sup> LbL coated CNF aerogels have also been used as scaffolds for batteries, using PEI/CNT layers as anode, the PEI/PAA layer as separator and a copper hexacyanoferrate as cathode.

Yang *et al.*<sup>124</sup> incorporated capacitive nanoparticles, either polypyrrole nanofibers, or polypyrrole-coated carbon nanotubes or spherical manganese dioxide nanoparticles to dispersions of aldehyde- and hydrazide modified CNC, which formed covalent hydrazone cross-links immediately upon contact.<sup>124</sup> Rapid freezing

followed by freeze drying of these hybrid networks resulted in aerogels with a high porosity ( $\sim 99\%$ ) that displayed excellent capacitance retention (between 40 and 45%) at high charge-discharge rates (up to  $1000 \text{ mV s}^{-1}$ ) as well as good cycle stability. Only minor changes in capacitive performance were noticed during *in situ* compression, highlighting, once again, the excellent mechanical properties provided by the nanocellulose scaffold.

#### 4.3. Thermally insulating and fire retardant materials

Cellulose has a low solid thermal conductivity that makes cellulose-based materials useful for thermal insulation. Traditional cellulose-based insulation materials display thermal conductivities in the range of  $40\text{--}50 \text{ mW m}^{-1} \text{ K}^{-1}$ , which is somewhat higher than modern polymer or mineral wool based insulating materials.<sup>93,125</sup>

Recent works have shown that nanocellulose foams and aerogels can display thermal conductivity below  $25 \text{ mW m}^{-1} \text{ K}^{-1}$  (=air conductivity), which classifies them as super-insulating materials.<sup>49,63,80,126,127</sup>

Attempts have been made to reduce the thermal conductivity by combining nanocelluloses with other nanosized or nanoporous particles.<sup>80,102,126,127</sup>

Wicklein *et al.*<sup>80</sup> combined nanocelluloses with graphene oxide and sepiolite and produced anisotropic composite foams

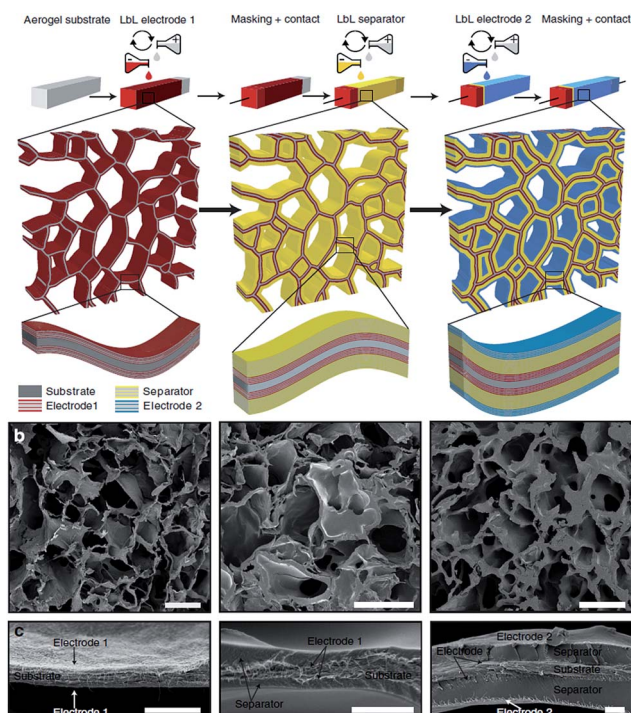


Fig. 12 (a) Energy-storage device assembly in a CNF aerogel by LbL technique and (b and c) SEM cross sections of the respective first PEI/CNT electrode (left), the PEI/CNT electrode with separator (middle), and the full device (right). Scale bars (b)  $50 \mu\text{m}$  and (c)  $2 \mu\text{m}$  (reproduced with the permission of Macmillan Publishers Limited<sup>107</sup>).

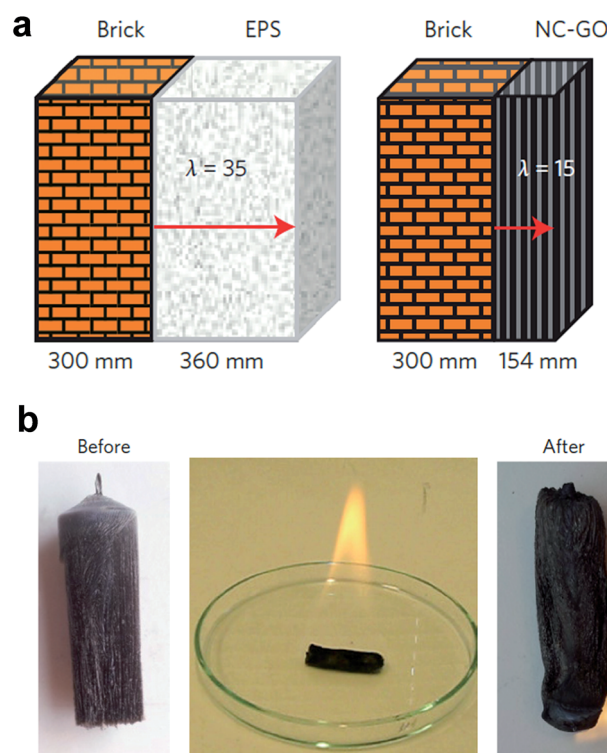


Fig. 13 Thermal insulation and fire retardancy of nanocellulose-based composite foam containing sepiolite (SEP), graphene oxide (GO) and boric acid: (a) comparison of the insulation thickness of expanded polystyrene (EPS) and composite foam (CNF-SEP-GO) needed to reach passive house standard (b) burning test of the nanocomposite foams soaked in ethanol resulted in a carbonized residue (reproduced with the permission of Macmillan Publisher Limited<sup>80</sup>).



by ice templating. The foams displayed a very low thermal conductivity in the direction transverse to the tubular macropores. The reduction of the thermal conductivity from 18 to 15 mW m<sup>-1</sup> K<sup>-1</sup> compared to neat CNF foams was related to an enhanced interfacial thermal resistance in the pore walls of the composite foams.

It was suggested that the nanocellulose-based foams could replace standard commercial EPS foams ( $\lambda = 35 \text{ mW m}^{-1} \text{ K}^{-1}$ ) with a 50% reduction in thickness needed to reach passive house standard (Fig. 13a).

The nanocomposite foams also showed excellent fire retardancy (Fig. 13b). The addition of inorganic fillers such as clays or graphene is a well-known approach to enhance the fire retardant properties of organic and inorganic composites.<sup>128</sup> The Limiting Oxygen Index (LOI) was as high as 34, which is significantly better than commercial flame-retardant containing polymer-based foams, which display LOI in the range 22–25.

## Conclusions and outlook

Nanocellulose possesses a combination of properties suitable for the production of ultralight, strong and flexible foams and aerogels for a rapidly growing range of applications. Several processing routes have been developed that enable production of nanocellulose-based foams and aerogels with a tunable porosity and pore architecture. Studies on the properties and structure of the wet foams are sparse and a fundamental understanding of the stability of the foams is still lacking. Studies on how the stability and dynamics of the air–liquid interface is influenced by nanocellulose could provide important insight into how the wet foams stability can be enhanced.

Challenges related to uncontrolled structural changes during solvent removal are currently limiting the scale up and there is a need for novel solvent-removal processes and a better understanding on how to minimize the structural changes during drying. Simplified solvent exchange and supercritical drying processes could be of potential interest. Time-resolved tomographic studies during drying coupled with information on the drying front movement and local drying stresses could also be used to provide a deeper understanding and perhaps also guidelines on how to minimize the stresses during drying of nanocellulose-based foams and aerogels.

The compressive behaviour of nanocellulose-based foams is relatively well studied and is well explained by cellular solids models. Studies on the electrical and thermal properties, on the other hand, are rare and the structure–property relationships are not well established.

Promising advanced materials have been achieved by combining nanocellulose with other nanosized components. Selection of the foam/aerogel wall composition is of pivotal importance for imparting novel functionalities to the material such as electrical conductivity or fire retardancy.

We expect that the research on nanocellulose-based foams and aerogels will continue to grow and look forward to the development of novel process routes and lightweight materials with outstanding properties for target applications.

## Acknowledgements

The authors acknowledge the Stiftelsen för strategisk forskning (RMA11-0065), Energimyndigheten (P40121-1), Svenska forskningsrådet Formas (2015-1032), and the Wallenberg Wood Science Centre (WWSC) for financial support.

## References

- 1 Y. Habibi, L. A. Lucia and O. J. Rojas, *Chem. Rev.*, 2010, **110**, 3479–3500.
- 2 Y. Habibi, *Chem. Soc. Rev.*, 2014, **43**, 1519–1542.
- 3 J. P. F. Lagerwall, C. Schutz, M. Salajkova, J. Noh, J. Hyun Park, G. Scalia and L. Bergstrom, *NPG Asia Mater.*, 2014, **6**, e80.
- 4 N. Lavoine, I. Desloges, A. Dufresne and J. Bras, *Carbohydr. Polym.*, 2012, **90**, 735–764.
- 5 T. Abitbol, A. Rivkin, Y. Cao, Y. Nevo, E. Abraham, T. Ben-Shalom, S. Lapidot and O. Shoseyov, *Curr. Opin. Biotechnol.*, 2016, **39**, 76–88.
- 6 B. G. Rånby and E. Ribi, *Experientia*, 1950, **6**, 12–14.
- 7 S. Beck-Candanedo, M. Roman and D. G. Gray, *Biomacromolecules*, 2005, **6**, 1048–1054.
- 8 H. Yu, Z. Qin, B. Liang, N. Liu, Z. Zhou and L. Chen, *J. Mater. Chem. A*, 2013, **1**, 3938–3944.
- 9 E. Kontturi, A. Meriluoto, P. A. Penttilä, N. Baccile, J.-M. Malho, A. Potthast, T. Rosenau, J. Ruokolainen, R. Serimaa, J. Laine and H. Sixta, *Angew. Chem., Int. Ed.*, 2016, **55**, 14455–14458.
- 10 S. Camarero Espinosa, T. Kuhnt, E. J. Foster and C. Weder, *Biomacromolecules*, 2013, **14**, 1223–1230.
- 11 H. Sadeghifar, I. Filpponen, S. P. Clarke, D. F. Brougham and D. S. Argyropoulos, *J. Mater. Sci.*, 2011, **46**, 7344–7355.
- 12 Y. Liu, H. Wang, G. Yu, Q. Yu, B. Li and X. Mu, *Carbohydr. Polym.*, 2014, **110**, 415–422.
- 13 A. Dufresne, *Nanocellulose: From Nature to High Performance Tailored Materials*, De Gruyter, France, 2012.
- 14 I. Siró, D. Plackett, M. Hedenqvist, M. Ankerfors and T. Lindström, *J. Appl. Polym. Sci.*, 2011, **119**, 2652–2660.
- 15 A. Isogai, T. Saito and H. Fukuzumi, *Nanoscale*, 2011, **3**, 71–85.
- 16 A. Pei, N. Butchosa, L. A. Berglund and Q. Zhou, *Soft Matter*, 2013, **9**, 2047–2055.
- 17 M. Henriksson, G. Henriksson, L. A. Berglund and T. Lindström, *Eur. Polym. J.*, 2007, **43**, 3434–3441.
- 18 O. Nechyporchuk, M. N. Belgacem and J. Bras, *Ind. Crops Prod.*, 2016, **17**, 2311–2320.
- 19 A. Dufresne, *Can. J. Chem.*, 2008, **86**, 484–494.
- 20 D. Klemm, F. Kramer, S. Moritz, T. Lindström, M. Ankerfors, D. Gray and A. Dorris, *Angew. Chem., Int. Ed.*, 2011, **50**, 5438–5466.
- 21 I. Siró and D. Plackett, *Cellulose*, 2010, **17**, 459–494.
- 22 G. Siqueira, J. Bras and A. Dufresne, *Polymers*, 2010, **2**, 728–765.
- 23 F. Li, E. Mascheroni and L. Piergiovanni, *Packag. Technol. Sci.*, 2015, **28**, 475–508.



- 24 A. Serpa, J. Velásquez-Cock, P. Gañán, C. Castro, L. Vélez and R. Zuluaga, *Food Hydrocolloids*, 2016, **57**, 178–186.
- 25 F. W. Brodin, Ø. W. Gregersen and K. Syverud, *Nord. Pulp Pap. Res. J.*, 2014, **29**, 156–166.
- 26 M. Jorfi and E. J. Foster, *J. Appl. Polym. Sci.*, 2015, **132**, 41719–41738.
- 27 P. Gatenholm and D. Klemm, *MRS Bull.*, 2010, **35**, 208–213.
- 28 F. Hoeng, A. Denneulin and J. Bras, *Nanoscale*, 2016, **8**, 13131–13154.
- 29 O. Nechyporchuk, M. N. Belgacem and F. Pignon, *Biomacromolecules*, 2016, **73**, 2311–2320.
- 30 K. Missoum, M. N. Belgacem and J. Bras, *Materials*, 2013, **6**, 1745–1766.
- 31 H. Sehaqui, M. Salajková, Q. Zhou and L. A. Berglund, *Soft Matter*, 2010, **6**, 1824–1832.
- 32 F. Martoia, T. Cochereau, P. J. J. Dumont, L. Orgéas, M. Terrien and M. N. Belgacem, *Mater. Des.*, 2016, **104**, 376–391.
- 33 G. D. Miles and J. Ross, *J. Phys. Chem.*, 1944, **48**, 280–290.
- 34 J. J. Bikerman, *Trans. Faraday Soc.*, 1938, **34**, 634–638.
- 35 O. Faruk, A. K. Bledzki and L. M. Matuana, *Macromol. Mater. Eng.*, 2007, **292**, 113–127.
- 36 A. Saint-Jalmes, *Soft Matter*, 2006, **2**, 836–849.
- 37 S. Lam, K. P. Velikov and O. D. Velev, *Curr. Opin. Colloid Interface Sci.*, 2014, **19**, 490–500.
- 38 T. N. Hunter, R. J. Pugh, G. V. Franks and G. J. Jameson, *Adv. Colloid Interface Sci.*, 2008, **137**, 57–81.
- 39 G. Kaptay, *Colloids Surf., A*, 2003, **230**, 67–80.
- 40 G. Kaptay, *Colloids Surf., A*, 2006, **282**, 387–401.
- 41 A.-L. Fameau and A. Salonen, *C. R. Phys.*, 2014, **15**, 748–760.
- 42 K. S. Gordeyeva, A. B. Fall, S. Hall, B. Wicklein and L. Bergström, *J. Colloid Interface Sci.*, 2016, **472**, 44–51.
- 43 B. P. Binks, *Curr. Opin. Colloid Interface Sci.*, 2002, **7**, 21–41.
- 44 N. T. Cervin, L. Andersson, J. B. S. Ng, P. Olin, L. Bergström and L. Wågberg, *Biomacromolecules*, 2013, **14**, 503–511.
- 45 N. T. Cervin, E. Johansson, J. W. Benjamins and L. Wågberg, *Biomacromolecules*, 2015, **16**, 822–831.
- 46 Z. Hu, R. Xu, E. D. Cranston and R. H. Pelton, *Biomacromolecules*, 2016, **17**, 4095–4099.
- 47 K.-Y. Lee, J. J. Blaker, R. Murakami, J. Y. Y. Heng and A. Bismarck, *Langmuir*, 2014, **30**, 452–460.
- 48 S. Tasset, B. Cathala, H. Bizot and I. Capron, *RSC Adv.*, 2014, **4**, 893–898.
- 49 K. Sakai, Y. Kobayashi, T. Saito and A. Isogai, *Sci. Rep.*, 2016, **6**, 20434–20441.
- 50 G. W. Scherer, *J. Non-Cryst. Solids*, 1986, **87**, 199–225.
- 51 A. C. Pierre and G. M. Pajonk, *Chem. Rev.*, 2002, **102**, 4243–4266.
- 52 G. Della Porta, P. Del Gaudio, F. De Cicco, R. P. Aquino and E. Reverchon, *Ind. Eng. Chem. Res.*, 2013, **52**, 12003–12009.
- 53 L. Heath and W. Thielemans, *Green Chem.*, 2010, **12**, 1448–1453.
- 54 F. Liebner, E. Haimer, M. Wendland, M.-A. A. Neouze, K. Schlufner, P. Miethé, T. Heinze, A. Potthast and T. Rosenau, *Macromol. Biosci.*, 2010, **10**, 349–352.
- 55 L. M. Sanz-Moral, M. Rueda, R. Mato and Á. Martín, *J. Supercrit. Fluids*, 2014, **92**, 24–30.
- 56 S. Deville, *Materials*, 2010, **3**, 1913–1927.
- 57 S. Deville, *J. Mater. Res.*, 2013, **28**, 2202–2219.
- 58 W. L. Li, K. Lu and J. Y. Walz, *Int. Mater. Rev.*, 2013, **57**, 37–60.
- 59 M. V. G. Zimmermann, C. Borsoi, A. Lavoratti, M. Zanini, A. J. Zattera and R. M. C. Santana, *J. Reinf. Plast. Compos.*, 2016, **35**, 682–697.
- 60 P. Munier, K. Gordeyeva, L. Bergström and A. B. Fall, *Biomacromolecules*, 2016, **17**, 1875–1881.
- 61 N. Tchang Cervin, E. Johansson, P. A. Larsson and L. Wågberg, *ACS Appl. Mater. Interfaces*, 2016, **8**, 11682–11689.
- 62 W. Chen, Q. Li, Y. Wang, X. Yi, J. Zeng, H. Yu, Y. Liu and J. Li, *ChemSusChem*, 2014, **7**, 154–161.
- 63 Y. Kobayashi, T. Saito and A. Isogai, *Angew. Chem., Int. Ed. Engl.*, 2014, **53**, 10394–10397.
- 64 C. Aulin, J. Netrval, L. Wågberg and T. Lindström, *Soft Matter*, 2010, **6**, 3298–3305.
- 65 X. Yang and E. D. Cranston, *Chem. Mater.*, 2014, **26**, 6016–6025.
- 66 H. Sehaqui, Q. Zhou and L. A. Berglund, *Compos. Sci. Technol.*, 2011, **71**, 1593–1599.
- 67 O. Ishida, D.-Y. Kim, S. Kuga, Y. Nishiyama and R. M. Brown, *Cellulose*, 2004, **11**, 475–480.
- 68 J. Nemoto, T. Saito and A. Isogai, *ACS Appl. Mater. Interfaces*, 2015, **7**, 19809–19815.
- 69 N. Pircher, S. Veigel, N. Aigner, J. M. M. Nedelec, T. Rosenau and F. Liebner, *Carbohydr. Polym.*, 2014, **111**, 505–513.
- 70 M. Granström, M. K. née Pääkkö, H. Jin, E. Kolehmainen, I. Kilpeläinen and O. Ikkala, *Polym. Chem.*, 2011, **2**, 1789–1796.
- 71 J. Lee and Y. Deng, *Soft Matter*, 2011, **7**, 6034–6040.
- 72 A. J. Svagan, M. A. S. A. Samir and L. A. Berglund, *Adv. Mater.*, 2008, **20**, 1263–1269.
- 73 K. Prakobna, F. Berthold, L. Medina and L. A. Berglund, *Composites, Part A*, 2016, **88**, 116–122.
- 74 Z. M. Ali and L. J. Gibson, *Soft Matter*, 2013, **9**, 1580–1588.
- 75 H. Sehaqui, M. E. Gálvez, V. Becatinni, Y. Cheng Ng, A. Steinfeld, T. Zimmermann and P. Tingaut, *Environ. Sci. Technol.*, 2015, **49**, 3167–3174.
- 76 R. Dash, Y. Li and A. J. Ragauskas, *Carbohydr. Polym.*, 2012, **88**, 789–792.
- 77 P. Wang, J. Zhao, R. Xuan, Y. Wang, C. Zou, Z. Zhang, Y. Wan and Y. Xu, *Dalton Trans.*, 2014, **43**, 6762–6768.
- 78 A. J. Svagan, P. Jensen, S. V. Dvinskikh, I. Furó and L. A. Berglund, *J. Mater. Chem.*, 2010, **20**, 6646–6654.
- 79 A. E. Donius, A. Liu, L. A. Berglund and U. G. K. K. Wegst, *J. Mech. Behav. Biomed. Mater.*, 2014, **37**, 88–99.
- 80 B. Wicklein, A. Kocjan, G. Salazar-Alvarez, F. Carosio, G. Camino, M. Antonietti and L. Bergström, *Nat. Nanotechnol.*, 2015, **10**, 277–283.
- 81 Z.-Z. Pan, H. Nishihara, S. Iwamura, T. Sekiguchi, A. Sato, A. Isogai, F. Kang, T. Kyotani and Q.-H. Yang, *ACS Nano*, 2016, **10**, 10689–10697.
- 82 H. Jin, M. Kettunen, A. Laiho, H. Pynnönen, J. Paltakari, A. Marmur, O. Ikkala and R. H. A. Ras, *Langmuir*, 2011, **27**, 1930–1934.



- 83 J. T. Korhonen, M. Kettunen, R. H. A. Ras and O. Ikkala, *ACS Appl. Mater. Interfaces*, 2011, **3**, 1813–1816.
- 84 M. Kettunen, R. J. Silvennoinen, N. Houbenov, A. Nykänen, J. Ruokolainen, J. Sainio, V. Pore, M. Kemell, M. Ankerfors, T. Lindström, M. Ritala, R. H. A. Ras and O. Ikkala, *Adv. Funct. Mater.*, 2011, **21**, 510–517.
- 85 W. Zhang, Y. Zhang, C. Lu and Y. Deng, *J. Mater. Chem.*, 2012, **22**, 11642–11650.
- 86 H. Cai, S. Sharma, W. Liu, W. Mu, W. Liu, X. Zhang and Y. Deng, *Biomacromolecules*, 2014, **15**, 2540–2547.
- 87 J. C. Arboleda, M. Hughes, L. A. Lucia, J. Laine, K. Ekman and O. J. Rojas, *Cellulose*, 2013, **20**, 2417–2426.
- 88 M. Wang, I. V. Anoshkin, A. G. Nasibulin, J. T. Korhonen, J. Seitsonen, J. Pere, E. I. Kauppinen, R. H. A. Ras and O. Ikkala, *Adv. Mater.*, 2013, **25**, 2428–2432.
- 89 M. Fumagalli, F. Sanchez, S. M. Boisseau and L. Heux, *Soft Matter*, 2013, **9**, 11309–11317.
- 90 M. Fumagalli, F. Sanchez, S. Molina-Boisseau and L. Heux, *Cellulose*, 2015, **22**, 1451–1457.
- 91 Z. Zhang, G. Sèbe, D. Rentsch, T. Zimmermann and P. Tingaut, *Chem. Mater.*, 2014, **26**, 2659–2668.
- 92 J. Zhao, C. Lu, X. He, X. Zhang, W. Zhang and X. Zhang, *ACS Appl. Mater. Interfaces*, 2015, **7**, 2607–2615.
- 93 J. Fu, S. Wang, C. He, Z. Lu, J. Huang and Z. Chen, *Carbohydr. Polym.*, 2016, **147**, 89–96.
- 94 T. Lu, Q. Li, W. Chen and H. Yu, *Compos. Sci. Technol.*, 2014, **94**, 132–138.
- 95 F. Jiang and Y.-L. Hsieh, *J. Mater. Chem. A*, 2014, **2**, 350–359.
- 96 T. Saito, T. Uematsu, S. Kimura, T. Enomae and A. Isogai, *Soft Matter*, 2011, **7**, 8804–8809.
- 97 J. Liu, F. Cheng, H. Grénman, S. Spoljaric, J. Seppälä, J. E. Eriksson, S. Willför and C. Xu, *Carbohydr. Polym.*, 2016, **148**, 259–271.
- 98 T. C. F. Silva, Y. Habibi, J. L. Colodette, T. Elder and L. A. Lucia, *Cellulose*, 2012, **19**, 1945–1956.
- 99 H. Dong, J. F. Snyder, D. T. Tran and J. L. Leadore, *Carbohydr. Polym.*, 2013, **95**, 760–767.
- 100 J. Lin, L. Yu, F. Tian, N. Zhao, X. Li, F. Bian and J. Wang, *Carbohydr. Polym.*, 2014, **109**, 35–43.
- 101 F. Jiang and Y.-L. Hsieh, *J. Mater. Chem. A*, 2014, **2**, 6337–6342.
- 102 D. Bendahou, A. Bendahou, B. Seantier, Y. Grohens and H. Kaddami, *Ind. Crops Prod.*, 2015, **65**, 374–382.
- 103 Q. Zheng, Z. Cai, Z. Ma and S. Gong, *ACS Appl. Mater. Interfaces*, 2015, **7**, 3263–3271.
- 104 S. Zhou, M. Wang, X. Chen and F. Xu, *ACS Sustainable Chem. Eng.*, 2015, **3**, 3346–3354.
- 105 N. T. Cervin, C. Aulin, P. T. Larsson and L. Wågberg, *Cellulose*, 2012, **19**, 401–410.
- 106 M. Hamed, E. Karabulut, A. Marais, A. Herland and G. Nyström, *Angew. Chem., Int. Ed.*, 2013, **52**, 12038–12042.
- 107 G. Nyström, A. Marais, E. Karabulut, L. Wågberg, Y. Cui and M. M. Hamed, *Nat. Commun.*, 2015, **6**, 7259.
- 108 H. Sai, R. Fu, L. Xing, J. Xiang, Z. Li, F. Li and T. Zhang, *ACS Appl. Mater. Interfaces*, 2015, **7**, 7373–7381.
- 109 L. J. Gibson and M. F. Ashby, *Cellular solids: structure and properties*, Cambridge University Press, 1999.
- 110 T. Woignier, J. Reynes, A. Hafidi Alaoui, I. Beurroies and J. Phalippou, *J. Non-Cryst. Solids*, 1998, **241**, 45–52.
- 111 R. Sescousse, R. Gavillon and T. Budtova, *Carbohydr. Polym.*, 2011, **83**, 1766–1774.
- 112 H. Liu, B. Geng, Y. Chen and H. Wang, *ACS Sustainable Chem. Eng.*, 2016, **5**, 49–66.
- 113 J. T. Korhonen, P. Hiekkataipale, J. Malm, M. Karppinen, O. Ikkala and R. H. A. Ras, *ACS Nano*, 2011, **5**, 1967–1974.
- 114 T. Hees, F. Zhong, T. Rudolph, A. Walther and R. Mülhaupt, *Adv. Funct. Mater.*, 2017, **27**, 1605586–1605594.
- 115 B. Wang, X. Li, B. Luo, J. Yang, X. Wang, Q. Song, S. Chen and L. Zhi, *Small*, 2013, **9**, 2399–2404.
- 116 Y. Meng, T. M. Young, P. Liu, C. I. Contescu, B. Huang and S. Wang, *Cellulose*, 2015, **22**, 435–447.
- 117 J. Štefelová, V. Slovák, G. Siqueira, R. T. Olsson, P. Tingaut, T. Zimmermann and H. Sehaqui, *ACS Sustainable Chem. Eng.*, 2017, **5**, 2679–2692.
- 118 M. Ago, A. Ferrer Carrera and O. J. Rojas, *ACS Sustainable Chem. Eng.*, 2016, **4**, 5546–5552.
- 119 H. Valo, S. Arola, P. Laaksonen, M. Torkkeli, L. Peltonen, M. B. Linder, R. Serimaa, S. Kuga, J. Hirvonen and T. Laaksonen, *Eur. J. Pharm. Sci.*, 2013, **50**, 69–77.
- 120 A. J. Svagan, J. W. Benjamins, Z. Al-Ansari, D. B. Shalom, A. Müllertz, L. Wågberg and K. Löbmann, *J. Controlled Release*, 2016, **244**, 74–82.
- 121 M. Pääkkö, J. Vapaavuori, R. Silvennoinen, H. Kosonen, M. Ankerfors, T. Lindström, L. Berglund and O. Ikkala, *Soft Matter*, 2008, **4**, 2492–2499.
- 122 L. Hu, J. W. Choi, Y. Yang, S. Jeong, F. La Mantia, L.-F. Cui and Y. Cui, *Proc. Natl. Acad. Sci. U. S. A.*, 2009, **106**, 21490–21494.
- 123 S. W. Lee, B.-S. Kim, S. Chen, Y. Shao-Horn and P. T. Hammond, *J. Am. Chem. Soc.*, 2009, **131**, 671–679.
- 124 X. Yang, K. Shi, I. Zhitomirsky and E. D. Cranston, *Adv. Mater.*, 2015, **27**, 6104–6109.
- 125 J. Kuhn, H. P. Ebert, M. C. Arduini-Schuster, D. Büttner and J. Fricke, *Int. J. Heat Mass Transfer*, 1992, **35**, 1795–1801.
- 126 B. Seantier, D. Bendahou, A. Bendahou, Y. Grohens and H. Kaddami, *Carbohydr. Polym.*, 2016, **138**, 335–348.
- 127 C. Jiménez-Saelices, B. Seantier, B. Cathala and Y. Grohens, *Carbohydr. Polym.*, 2017, **157**, 105–113.
- 128 T. Kashiwagi, F. Du, J. F. Douglas, K. I. Winey, R. H. Harris and J. R. Shields, *Nat. Mater.*, 2005, **4**, 928–933.

