

Cite this: *Chem. Sci.*, 2018, 9, 3580Received 27th January 2018  
Accepted 27th February 2018DOI: 10.1039/c8sc00435h  
rsc.li/chemical-science

# Using stereoretention for the synthesis of *E*-macrocycles with ruthenium-based olefin metathesis catalysts†

Tonia S. Ahmed, T. Patrick Montgomery and Robert H. Grubbs \*

The synthesis of *E*-macrocycles is achieved using stereoretentive, Ru-based olefin metathesis catalysts supported by dithiolate ligands. Kinetic studies elucidate marked differences in activity among the catalysts tested, with catalyst 4 providing meaningful yields of products in much shorter reaction times than stereoretentive catalysts 2 and 3. Macrocycles were generated with excellent selectivity (>99% *E*) and in moderate to high yields (47–80% yield) from diene starting materials bearing two *E*-configured olefins. A variety of rings were constructed, ranging from 12- to 18-membered macrocycles, including the antibiotic recifeiolide.

## Introduction

Ring-closing metathesis (RCM) has gained widespread use in organic synthesis for the production of macrocyclic frameworks.<sup>1</sup> This transition metal-catalyzed reaction is commonly used in the synthesis of many biologically active and olfactory compounds.<sup>2</sup> The stereochemistry of the olefin often governs the properties of these cyclic molecules. Consequently, the stereochemical purity of olefin mixtures is important. The separation of *E*- and *Z*-isomers can be challenging, and thus methods for stereoselectively generating macrocycles are desirable.

The synthesis of *Z*-macrocycles has been reported using an array of Ru-,<sup>3</sup> W-, and Mo-based<sup>4</sup> olefin metathesis catalysts. The steric environment of each of these catalysts is tuned such that the *syn* metallacyclobutane pathway is favored over the *anti* metallacyclobutane pathway (Fig. 1). Cycloreversion of this *syn* intermediate gives the macrocycle with *Z*-configuration.

In 2013, Hoveyda and co-workers reported Ru-based catalysts bearing dithiolate ligands that were able to perform highly *Z*-selective cross metathesis from *Z*-olefin starting materials.<sup>5</sup> In 2015, we demonstrated that these catalysts were further capable of cross metathesis between two *E*-olefins or between an *E*-olefin and a terminal olefin to generate *E*-products with high selectivity (>98% *E*).<sup>6</sup> This was the first reported example of highly *E*-selective cross metathesis through kinetic control.

The stereoretention exhibited by these complexes is proposed to arise from the  $\alpha$  substituents of the

metallacyclobutane pointing away from the large *N*-aryl groups of the *N*-heterocyclic carbene (NHC) ligand (Fig. 2a). Depending on the stereochemistry of the starting olefin, the  $\beta$  substituent can either point down or up into the open space between the two *N*-aryl groups and in front of the imidazol-2-ylidene ring. Given that the olefin starting material stereochemistry is *Z*, the  $\beta$  substituent in the favored intermediate will point down, and the product formed after cycloreversion will be *Z*. Conversely, if the starting olefin has *E* stereochemistry, the  $\beta$  substituent will point up, and the product from the favored intermediate will be *E*. Soon after this report, Schrock and Hoveyda described Mo-based catalysts capable of a similar transformation, by which *E*-selectivity in cross metathesis is achieved from *E*-alkenyl halide starting materials (Fig. 2b).<sup>7</sup>

*E*-selective cross metathesis using stereoretentive Ru-based catalysts was often marred by low yields in reactions involving functionalized substrates or terminal olefins. Although the low yields observed in reactions with terminal olefins were attributed to decomposition of Ru methylidenes,<sup>6</sup> studies performed in our group showed that a large contributing factor to low activity with functionalized substrates is slow catalyst initiation

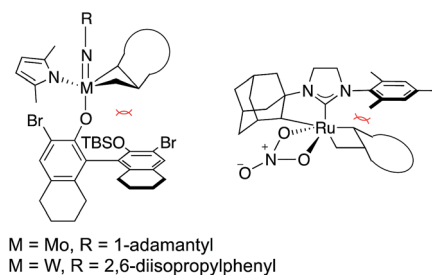


Fig. 1 Key metallacyclobutane intermediates for making *Z*-macrocycles using Mo-, W-, and Ru-based olefin metathesis catalysts.

Arnold and Mabel Beckman Laboratories of Chemical Synthesis, Division of Chemistry and Chemical Engineering, California Institute of Technology, Pasadena, California 91125, USA. E-mail: rhg@caltech.edu

† Electronic supplementary information (ESI) available. See DOI: 10.1039/c8sc00435h



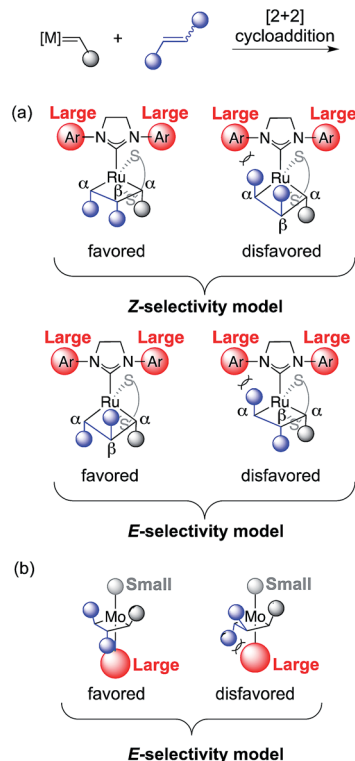


Fig. 2 Models for selectivity in cross metathesis using stereoretentive olefin metathesis catalysts for (a) Ru catalysts and (b) Mo catalysts.

in reactions of these catalysts with *E*-olefins.<sup>8</sup> A series of fast-initiating catalysts 1–4 was reported to significantly improve activity of stereoretentive catalysts in highly *E*-selective reactions (Fig. 3).

The first example of the stereoselective synthesis of macrocycles using stereoretention was reported using Mo-based catalysts to generate *E*-macrocycles (91–98% *E*) from diene substrates containing an *E*-alkenyl-B(pinacolato) moiety and a terminal olefin.<sup>9</sup> We recently reported a highly efficient synthesis of *Z*-macrocycles (95–99% *Z*) using stereoretention with Ru-based catalysts and substrates bearing a *Z*-olefin and a terminal olefin.<sup>10</sup> Hoveyda and co-workers then provided



Fig. 3 Series of fast-initiating, Ru-based catalysts used in achieving efficient synthesis of *E*-products in cross metathesis.

further examples of *Z*-macrocyclizations using other stereoretentive Ru catalysts and one example of *E*-macrocycle synthesis using 3.<sup>11</sup> Additional methods of obtaining *E*-macrocycles include *Z*-selective ethenolysis of stereochemical mixtures of macrocycles<sup>3</sup> and alkyne metathesis followed by *E*-selective semihydrogenation catalyzed by Cp\*Ru(COD)Cl/AgOTf.<sup>12</sup>

## Results and discussion

We anticipated that *E*-macrocycles could be generated from diene starting materials containing an *E*-olefin using stereoretentive Ru catalysts. The proposed favored metal-lacyclobutane intermediate avoids steric clashing of the  $\alpha$  substituent with the *N*-aryl group as proposed in the disfavored intermediate (Fig. 4). Catalysts 2–4 were chosen for studying RCM with these substrates as they had previously exhibited remarkable activity and selectivity in cross metathesis of *E*-olefins.<sup>8</sup> Based on the aforementioned proposed model for stereoretention, we expected that reducing the *ortho* substituent size of the *N*-aryl groups would allow for better accommodation of the  $\beta$  substituent in *E*-selective RCM. Therefore the reactivity of 4 with *E*-olefins would be greater than 3, which would furthermore be greater than that of 2.

Using the approach we established in the synthesis of *Z*-macrocycles, we attempted to make *E*-macrocycle 6 from diene starting material 5 bearing an *E*-olefin and a terminal olefin (Scheme 1). Using a standard 7.5 mol% catalyst loading typical of macrocyclization reactions,<sup>13</sup> catalysts 2, 3, and 4 reached a maximum of 4%, 30%, and 39% conversion, respectively, to the desired product with high *E*-selectivity (>99% *E*) at 35 °C. This low conversion is presumably a result of the instability and decomposition of unstable Ru methylidenes formed in this reaction.<sup>14</sup> Previous studies have shown that reaction of these catalysts with *E*-olefins is considerably slower than with *Z*-olefins.<sup>8</sup> Therefore it is proposed that Ru methylidenes persist longer in solution in reactions with *E*-olefins and are accordingly more prone to decomposition in reactions with *E*-olefins than in those with *Z*-olefins.

To avoid the formation of Ru methylidenes, diene substrates containing two *E*-olefins were synthesized. Using substrate 7, the formation of 12-membered macrocycle 8 was monitored

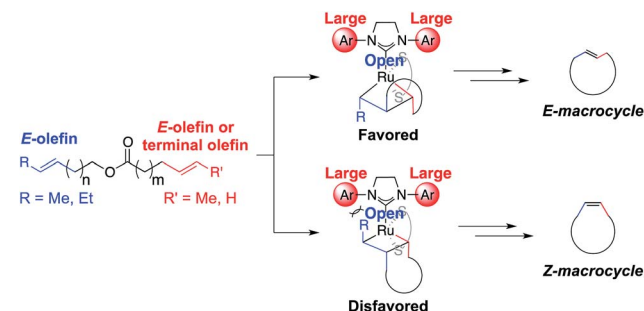


Fig. 4 Proposed favored and disfavored intermediates in the formation of macrocycles from dienes containing an *E*-olefin.





Scheme 1 Synthesis of *E*-macrocycle **6** from **5** using **2–4**. Conversion determined by  $^1\text{H}$  NMR. Selectivity determined using gas chromatography.

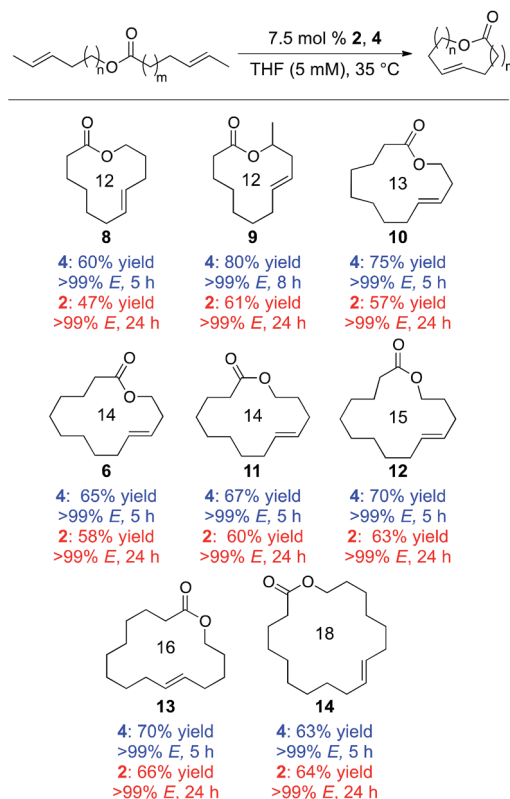
using catalysts **2–4** at 35 °C (Fig. 5a). Catalyst **4** displayed remarkable activity in this reaction. After 30 minutes, the reaction reached 30% conversion to **8** with **4**, while **3** provided just 5% conversion and **2** reached 2% conversion. After just 1 h, **4** achieves 57% conversion. To reach the same conversion, **3** requires 9 h, while **2** never attains this level of conversion. A maximum of 70% conversion to **8** is achieved using **4**, while **3** reaches a maximum of 62% conversion and **2** gives 51% conversion. With each of these catalysts, high *E*-selectivity (>99% *E*) was maintained throughout the course of the reaction.

Assuming first-order kinetics with respect to diene **7**, rate constants were measured for catalysts **2**, **3**, and **4** under these reaction conditions and were determined to be  $3.92 \times 10^{-2} \text{ s}^{-1}$ ,



Scheme 2 Synthesis of diene substrates bearing two *E*-olefins.

Table 1 Synthesis of macrocyclic lactones using catalysts **2** and **4**<sup>a</sup>



<sup>a</sup> Yields shown are isolated yields. Stereoselectivity determined by gas chromatography.

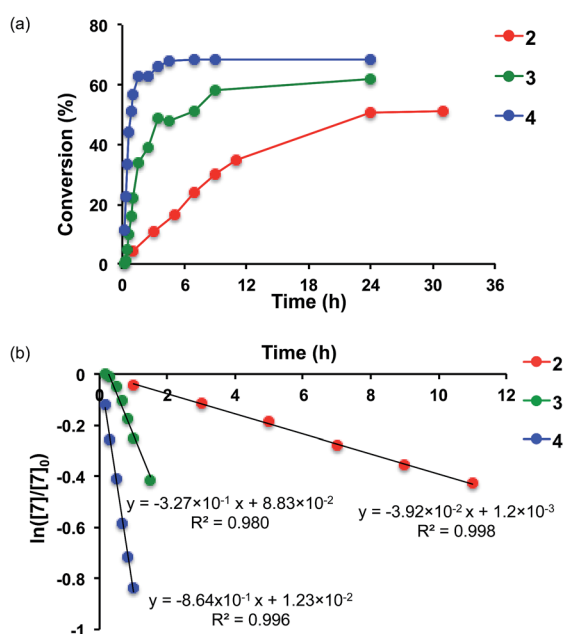


Fig. 5 (a) Plot of conversion vs. time for RCM of **7** to **8** using catalysts **2–4**. (b) Plot of  $\ln([7]/[7]_0)$  vs. time for this reaction. Conversion determined by  $^1\text{H}$  NMR. Selectivity determined using gas chromatography.



(Table 1). Each of these macrocycles was generated with the concomitant loss of gaseous *trans*-2-butene, which could be easily removed from the reaction mixture. Using catalyst **2**, products were obtained in moderate to good yields (47–66%) and with high *E*-selectivity (>99% *E*) in 24 h at 35 °C. Much shorter reaction times could be achieved using **4**, which provided these macrocycle products in 5 h in good to high yields (60%–80%) while high *E*-selectivity was maintained (>99% *E*). Using **4**, the antibiotic recifeiolide **9** was synthesized in 80% yield with >99% *E*-selectivity in 8 h. Longer reaction times were likely required for this reaction due to steric encumbrance of the methyl group in the starting material.

## Conclusions

We have demonstrated that stereoretentive Ru catalysts supported by dithiolate ligands can be used in the synthesis of *E*-macrocycles with exceptional selectivity (>99% *E*) from diene starting materials bearing two *E*-olefins. Catalyst **4** delivers meaningful yields of macrocyclic products in appreciably shorter reaction times than other stereoretentive Ru catalysts **2** and **3** as evidenced by kinetic studies. Using this method, 12- to 18-membered macrocycles including recifeiolide were synthesized in moderate to high yield (47–80% yield).

## Conflicts of interest

There are no conflicts to declare.

## Acknowledgements

The authors acknowledge funding from the Office of Naval Research (N00014-14-1-0650), NIH (GM031332), and NSF (CHE-1502616). T. S. A. recognizes NSF for support through a Graduate Research Fellowship. T. P. M. would like to acknowledge the Arnold and Mabel Beckman Foundation for funding. The authors would like to thank W. J. Wolf, C. Xu, C. W. Lee, J. Li, and N. F. Nathel for helpful suggestions. N. Torian and M. Shahgholi are thanked for their help with high-resolution mass spectrometry. Materia, Inc. is acknowledged for generous donations of Ru catalyst precursors.

## Notes and references

- 1 *Handbook of Metathesis*, ed. Grubbs, R. H., Wenzel, A. G., O'Leary, D. J. and Khosravi, E., Wiley-VCH, Weinheim, 2015.
- 2 (a) A. Michrowska, P. Wawrzyniak and K. Grela, *Eur. J. Org. Chem.*, 2004, 2053; (b) G. G. Rimkus, *The Handbook of Environmental Chemistry*, Springer, Berlin, 2004, vol. 3X; (c) D. J. Rowe, *Chemistry and Technology of Flavors and Fragrances*, Blackwell, Oxford, U.K., 2005; (d) A. Gradillas and J. Perez-Castells, *Angew. Chem., Int. Ed.*, 2006, **45**, 6086; (e) G. Ohloff, W. Pickenhagen and P. Kraft, *Scent and Chemistry: The Molecular World of Odors*, Verlag Helvetica Acta, Zürich, 2011; (f) C. S. Higman, J. A. M. Lummiss and D. E. Fogg, *Angew. Chem., Int. Ed.*, 2016, **55**, 3552.
- 3 V. M. Marx, M. B. Herbert, B. K. Keitz and R. H. Grubbs, *J. Am. Chem. Soc.*, 2013, **135**, 94.
- 4 M. Yu, C. Wang, A. F. Kyle, P. Jakubec, D. J. Dixon, R. R. Schrock and A. H. Hoveyda, *Nature*, 2011, **479**, 88.
- 5 M. J. Koh, R. K. M. Khan, S. Torker, M. Yu, M. S. Mikus and A. H. Hoveyda, *Nature*, 2015, **517**, 181.
- 6 (a) A. M. Johns, T. S. Ahmed, B. W. Jackson, R. H. Grubbs and R. L. Pederson, *Org. Lett.*, 2016, **18**, 772; (b) T. P. Montgomery, T. S. Ahmed and R. H. Grubbs, *Angew. Chem., Int. Ed.*, 2017, **56**, 11024.
- 7 T. T. Nguyen, M. J. Koh, X. Shen, F. Romiti, R. R. Shrock and A. H. Hoveyda, *Science*, 2016, **352**, 569.
- 8 T. S. Ahmed and R. H. Grubbs, *J. Am. Chem. Soc.*, 2017, **139**, 1532.
- 9 X. Shen, T. T. Nguyen, M. J. Koh, D. Xu, A. W. H. Speed, R. R. Schrock and A. H. Hoveyda, *Nature*, 2017, **541**, 380.
- 10 T. S. Ahmed and R. H. Grubbs, *Angew. Chem., Int. Ed.*, 2017, **56**, 11213.
- 11 C. Xu, X. Shen and A. H. Hoveyda, *J. Am. Chem. Soc.*, 2017, **139**, 10919.
- 12 K. Radkowski, B. Sundararaju and A. Fürstner, *Angew. Chem., Int. Ed.*, 2013, **52**, 355.
- 13 High catalyst loadings are often used in macrocyclization reactions because of the dilute conditions necessary for preventing oligomerization. For examples see ref. <sup>3</sup>, <sup>4</sup>, and <sup>9</sup>.
- 14 This result was in agreement with previous studies showing that cross metathesis between *E*-olefins and terminal olefins using these catalysts is challenging (ref. <sup>6</sup> and <sup>8</sup>).

