

A novel Gaussian-DAEM-reaction model for the pyrolysis of cellulose, hemicellulose and lignin

Cite this: *RSC Adv.*, 2014, 4, 17513Jinzhi Zhang,^{ab} Tianju Chen,^{*a} Jingli Wu^a and Jinhu Wu^{*a}

This work deals with the pyrolysis kinetics of cellulose, hemicellulose and lignin. Experiments were carried out in a thermogravimetric analyzer (TGA Q5000) in the inert atmosphere of nitrogen at a heating rate of 10 K min⁻¹. The single Gaussian distributed activation energy model (DAEM) was utilized to study the pyrolysis kinetics. Kinetic parameters such as the pre-exponential factor (k_0), mean activation energy (E_0) and standard variance (σ) were computed by a pattern search algorithm. It was found that the calculated kinetic parameters using the single Gaussian-DAEM-reaction model could reproduce the differential thermogravimetric (DTG) curves of cellulose very well. However, there existed obvious deviations in the whole range of temperatures between the calculated and experimental data for hemicellulose and lignin. In order to describe the thermal decompositions of hemicellulose and lignin more accurately, a novel double Gaussian-DAEM-reaction model consisting of two parallel partial reactions was developed to describe the pyrolysis processes. Calculated results of the fitting procedure using the double Gaussian-DAEM-reaction model showed good agreement with experimental DTG data of hemicellulose and lignin.

Received 19th February 2014

Accepted 31st March 2014

DOI: 10.1039/c4ra01445f

www.rsc.org/advances

1. Introduction

The combustion of fossil fuels has become the largest source of greenhouse gas emissions.¹ Due to the demand for environmental responsibility and the depletion of fossil fuels, biomass, as a clean and sustainable energy source, has currently received increased attention for being converted into alternative fuels.² Two main kinds of process technologies by which biomass can be converted into alternative fuels are biological technology and thermochemical technology. Pyrolysis, as one kind of biomass thermochemical conversion technology, involves the thermal degradation of the starting material resulting in the production of solid, liquid and gas products. Pyrolysis has been applied for commercial production of varieties of fuels, solvents, chemicals and other products from biomass feedstocks.^{3–5} Pyrolysis process is thought to be one of the most promising ways to convert biomass into chemicals and higher value fuels as it takes advantage both of a great flexibility and a relatively easy control of products yields and characteristics.^{6–9}

A fundamental study of pyrolysis kinetics can help us to predict the pyrolysis behavior of biomass materials as well as design efficient pyrolytic reactors for engineering applications.¹⁰ Thermogravimetric analysis (TGA) is the most commonly used thermoanalytical technique for the pyrolysis of samples by monitoring the mass changes online.¹¹

Nonisothermal TGA can offer some advantages over the classical isothermal method because it permits a rapid and complete scan of the entire temperature in a single experiment.¹² Although both thermogravimetric (TG) and differential thermogravimetric (DTG) curves could be obtained from TGA, many researchers selected to choose DTG curves to estimate the kinetic parameters, because DTG curves made easier the identification of the kinetic process.^{13,14} In addition, DTG curves were more sensitive to changes of thermal decomposition, for small changes in the TG curves were magnified in the corresponding DTG curves.

Several models such as the single reaction model, two parallel reaction model, three-pseudocomponent model, and the distributed activation energy model (DAEM) have been used to describe the kinetic process of biomass pyrolysis.^{15,16} The most accurate and up-to-date method for modeling the thermal decomposition of biomass is to adopt DAEM, which has been widely applied to describe complex biomass pyrolysis.^{17–19} The model assumes that a series of irreversible first order parallel reactions occur simultaneously, which have a range of activation energies. And the activation energy is usually approximated described by a Gaussian distribution.²⁰ Researchers have made a lot of research on biomass pyrolysis by the three-parallel-DAEM-reaction model, which assumes three independent parallel reacting pseudocomponents (cellulose, hemicellulose and lignin).^{21–25} It was further assumed that the pyrolysis kinetics of each pseudocomponent can be described by the single Gaussian-reaction-DAEM.

In the previous research, the pyrolysis and gasification process of biomass and its three main components (cellulose,

^aKey Laboratory of Biofuels, Qingdao Institute of Bioenergy and Bioprocess Technology, Chinese Academy of Sciences, 189 Songling Road, Qingdao 266101, China. E-mail: chentianju27@gmail.com; wujh@qibebt.ac.cn; Tel: +86-532-80662763; +86-532-80662761

^bUniversity of Chinese Academy of Sciences, Beijing 100049, China

hemicellulose and lignin) were investigated.^{26,27} One aim of this work was to make sure whether the single Gaussian-DAEM-reaction model could describe thermal decompositions of cellulose, hemicellulose and lignin successfully. Calculated results in this work showed that the single Gaussian-DAEM-reaction model could not describe DTG curves of hemicellulose or lignin correctly. So the other aim was to find a kinetic model that could well describe the pyrolysis decompositions of hemicellulose and lignin. The multi-peaks method was first used to fit multiple peaks by Gaussian functions to DTG curves of hemicellulose and lignin, and results showed that two Gaussian distribution models could fit the DTG curves of hemicellulose and lignin very well. Accordingly in this work, a novel double Gaussian-DAEM-reaction model based on the multi-peaks method was developed to describe the pyrolysis processes of the hemicellulose and lignin. Kinetic parameters such as pre-exponential factor (k_0), mean activation energy (E_0) and standard variance (σ) were determined by pattern search method.

2. Experimental

2.1 Materials

Cellulose (CAS no.: 9004-34-6), hemicellulose (CAS no.: 9014-63-5) and lignin (CAS no.: 8068-05-1) were obtained from Sigma-Aldrich Co., Ltd (USA). In this study, cellulose was a polysaccharide composed of long chains of $\beta(1,4)$ linked D-glucose units. The hemicellulose was refined from the beechwood. The low sulfonate content alkali lignin was chosen in this study. All the experimental samples were dried for 12 h at 378 K to remove water before experiment. The ash content for cellulose, hemicellulose and lignin were 0, 0.48%, and 11.6%, respectively.

TG and DTG curves were obtained from the thermogravimetric equipment (TGA Q5000 V3.15 Build 263). This analyser provides for simultaneous measurement of weight changes from ambient to 900 K at a heating rate of 10 K min⁻¹ in N₂ atmosphere at a flow rate of 80 mL min⁻¹.

2.2 Nonisothermal DAEM equation

$\alpha(T)$ is the degree of conversion at temperature T , and its value can be obtained from TGA data of the sample according to eqn (1). In the equation, ω_0 is the initial weight, ω_f is the final weight and ω_T is the weight at temperature T .

$$\alpha(T) = \frac{\omega_0 - \omega_T}{\omega_0 - \omega_f} \quad (1)$$

DAEM has been widely applied to analyze complex reactions such as pyrolysis of biomass and fossil fuels.¹⁸⁻²⁰ When the model is applied to represent the change in total volatiles of non-isothermal pyrolysis process, the model is as shown in eqn (2). In this equation, k_0 is the pre-exponential factor corresponding to the E value, and β is the heating rate, R is the universal gas constant, T is the temperature, and $f(E)$ is the distribution of the activation energy representing the differences in the activation energies of many reactions.

$$\alpha(T) = \int_0^\infty 1 - \exp\left\{\left[-\frac{k_0}{\beta} \int_0^T \exp\left(-\frac{E}{RT}\right) dT\right] f(E) dE\right\} dT f(E) dE \quad (2)$$

In order to estimate the values of k_0 and $f(E)$, the activation energy distribution is generally assumed by a Gaussian distribution with mean activation energy E_0 and standard deviation σ as shown in eqn (3).

$$f(E) = \frac{1}{\sigma\sqrt{2\pi}} \exp\left[-\frac{(E - E_0)^2}{2\sigma^2}\right] \quad (3)$$

The derivative of eqn (2) is given by eqn (4).

$$\frac{d\alpha(T)}{dT} = \frac{1}{\sigma\sqrt{2\pi}} \int_0^\infty \frac{k_0}{\beta} \exp\left[-\frac{E}{RT} - \frac{k_0}{\beta} \int_0^T \exp\left(-\frac{E}{RT}\right) dT - \frac{(E - E_0)^2}{2\sigma^2}\right] dE \quad (4)$$

Both the inner dT integral and the outer dE integral in eqn (4) have no exact analytical solution, and a large number of approximations have been proposed.²⁸ In this work, the approximation for the temperature integral proposed by Doyle²⁹ was utilized to replace the general temperature integral as shown in eqn (5). What's more, a computer program has been created in MATLAB to perform the outer dE integral of eqn (4).

$$\int_0^T \exp\left(-\frac{E}{8.314T}\right) dT = \frac{0.00484E}{R} \exp\left(-\frac{1.0516E}{RT}\right) \quad (5)$$

2.3 Determination of kinetic parameters

For the purpose of optimizing kinetic parameters (including k_0 , E_0 , and σ) of nonisothermal DAEM equations, the objective function was formed according to eqn (6). The subscript i refers to the data points used, n_d is the number of the data points, $(d\alpha/dT)_{i,\text{exp}}$ represents the experimental data, and $(d\alpha/dT)_{i,\text{cal}}$ represents those calculated by eqn (4) for a given set of parameters of k_0 , E_0 , and σ .

$$S = \sum_{i=1}^{n_d} \left[\left(\frac{d\alpha}{dT} \right)_{i,\text{exp}} - \left(\frac{d\alpha}{dT} \right)_{i,\text{cal}} \right]^2 \quad (6)$$

The value of Fit as shown in eqn (7) accounts for the differences between the experimental values and those calculated from the model prediction according to eqn (4), where $(d\alpha/dT)_{\text{max}}$ is the maximum experimental value. A lower value of Fit in eqn (7) indicates a better quality of fitness.

$$\text{Fit}(\%) = 100 \times \frac{\sqrt{\frac{S}{n_d}}}{\left(\frac{d\alpha}{dT} \right)_{\text{max}}} \quad (7)$$

It is hard to deal with the optimization problem by using traditional optimization techniques if the objective function

has no explicit expression, because it is difficult to obtain information about gradient or higher derivations of the objective function without explicit expression. Consequently, the optimization algorithm should be derivative-free. According to Cai *et al.*,³⁰ it is efficient to solve the problem by using pattern search method, which is a derivative-free, direct search method, and superior to other direct search method such as Powell method and Simplex method in both robustness and number of function evaluations.

According to the values of k_0 , E_0 , and σ reported in the literature,^{31,32} the range of E_0 was selected from 100 to 350 kJ mol⁻¹, σ was from 1 to 50 kJ mol⁻¹, and k_0 was from 10⁵ to 10³⁰ s⁻¹.

3. Results and discussion

3.1 Single Gaussian-DAEM-reaction model

Fig. 1 compared the TG and DTG curves of three main components of biomass, namely: cellulose, hemicellulose and lignin. As shown in Fig. 1a and b, remarkable differences were found among thermal decomposition behaviors of cellulose, hemicellulose and lignin. It was evident that cellulose exhibited a tall narrow peak, while the other two samples both had a lower peak with a flat tailing. It can be observed from Fig. 1 that cellulose degradation happened between 560 and 650 K, hemicellulose began to thermally decompose at 460–690 K, and lignin degradation took place at 450–850 K. These results were consistent with reported data.³³ When temperature was higher than 650 K, almost all cellulose was decomposed with a very low solid residue (4.3%) left. However, high solid residue was left for hemicellulose (26.0%) and lignin (60.7%) at 950 K. Ash existed in the solid residue.

Shanks *et al.*^{34–36} investigated the influence of minerals salts and switchgrass ash on fast pyrolysis of the three samples, it was found that mineral salts and switchgrass ash actually had effect on pyrolysis product distributions of cellulose and hemicellulose. In this work, cellulose and hemicellulose contained negligible amount of ash content (0 and 0.48%, respectively), so the impact of the small amount of mineral impurities on the pyrolysis kinetics could be ignored. Shanks *et al.*^{34,35} also found that the presence of minerals had no obvious effect on lignin pyrolysis. It was supposed that ash had no significant influence on lignin pyrolysis, although high ash content was found in lignin (11.6%) in this study. Therefore, it was reasonable to consider the obtained samples without further purification for kinetic studies.

DTG curves make easier identification of the kinetic process than do the TG curves. Consequently, DTG curves were selected to determine the kinetic parameters. The single Gaussian-DAEM-reaction model was applied to investigate the pyrolysis kinetics of three pseudocomponents of biomass according to the theory introduced in part 2.2.

3.1.1 Cellulose. The DTG curve in Fig. 1b showed that cellulose had one single steep peak at 560–650 K, because the cellulose molecule used in this work was a very long chains of $\beta(1,4)$ linked D-glucose units without any branches, and it was crystalline. The maximum weight loss rate was reached at 613 K. When the temperature was higher than 650 K, nearly all cellulose was decomposed, leaving very low solid residue left. The

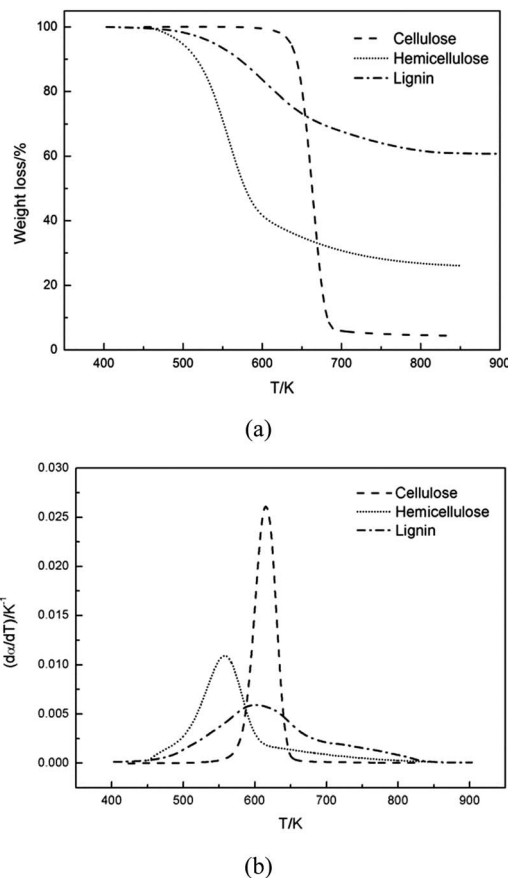


Fig. 1 Experimental TG and DTG curves of cellulose, hemicellulose and lignin.

results of the fitting procedure by the single Gaussian-DAEM-reaction model for cellulose were shown in Fig. 2a, where it can be noticed that the calculated kinetic parameters could reproduce the experimental data very well, and the value of Fit for cellulose was 1.58%, which was in acceptable ranges (Fit < 4% is generally acceptable). The kinetic parameters obtained from the fitting procedure were listed in Table 1. It can be seen that the kinetic parameters were $k_0 = 2.612 \times 10^{18}$ s⁻¹ and $E_0 = 240.230$ kJ mol⁻¹ for cellulose. Cai *et al.*³⁷ gave 258.57 kJ mol⁻¹ for the activation energy and 1.6×10^{17} s⁻¹ for the pre-exponential factor when dealing with cellulose pyrolysis by the logistic DAEM reaction model. It can be observed that the values of kinetic parameters obtained in this study for cellulose pyrolysis are in reasonable ranges. Based on above analysis, it can be concluded that the single Gaussian-DAEM-reaction model is effective to describe the pyrolysis process of cellulose.

3.1.2 Hemicellulose. Hemicellulose is a complex component of biomass. The main hemicellulose component is xylan, which is composed of 1,4-linked β-D-xylopyranose (β-D-Xylp) units that can be substituted at C-2 and/or C-3 by short and flexible side chains. Xylan had the chemical formula (C₅H₈O₄)_n with molecular mass of approximately 30 000 (200 xylopyranose units).²¹ Xylan was used as the sample of hemicellulose in this study.

It can be seen from Fig. 1b that hemicellulose started decomposing earlier than cellulose, and the weight loss mainly

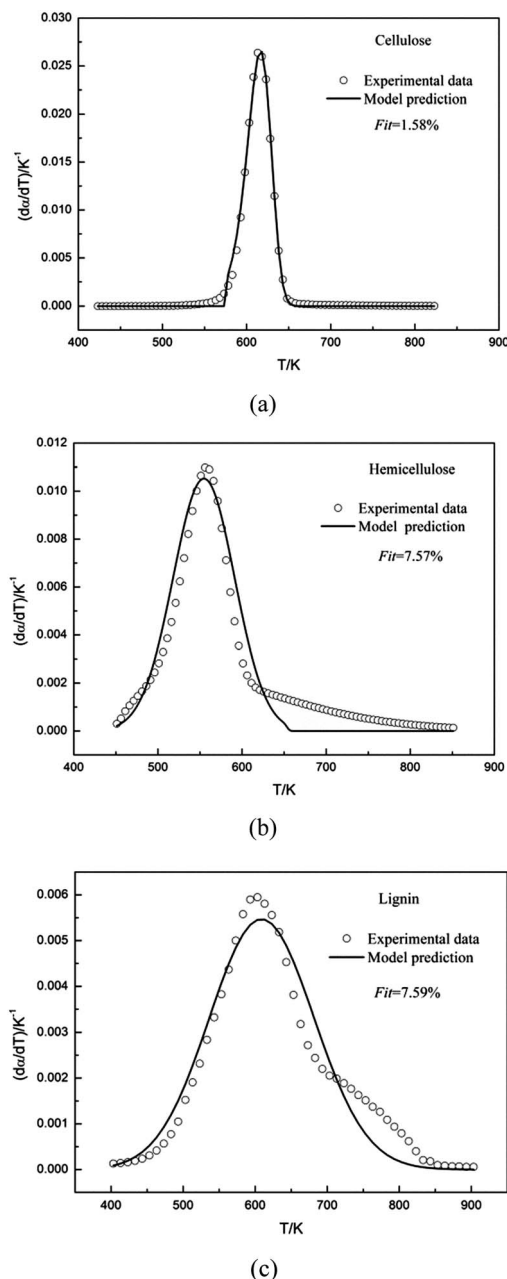


Fig. 2 Experimental and calculated DTG curves of cellulose, hemicellulose and lignin using the single Gaussian-DAEM-reaction model.

Table 1 Fitted kinetic and statistical parameters for pyrolysis of cellulose, hemicellulose and lignin by the single Gaussian-DAEM-reaction model

Sample	$k_{0,j}/\text{s}^{-1}$	$E_{0,j}/\text{kJ mol}^{-1}$	$\sigma_j/\text{kJ mol}^{-1}$	Fit (%)
Cellulose	2.612×10^{18}	240.23	2.366	1.58
Hemicellulose	6.137×10^{14}	179.84	10.815	7.57
Lignin	8.511×10^{11}	165.61	19.307	7.59

happened at 460–690 K. Possible reasons are that hemicellulose is amorphous and has a lower degree of polymerisation compared with cellulose.

The kinetic parameters obtained from the fitting procedure using the single Gaussian-DAEM-reaction model were listed in Table 1. It can be seen that the kinetic parameters were $k_0 = 6.137 \times 10^{14} \text{ s}^{-1}$ and $E_0 = 179.84 \text{ kJ mol}^{-1}$ for hemicellulose. As was shown in Table 1, the value of Fit for hemicellulose reached up to 7.57%, which was higher than the acceptable range (Fit < 4% is generally acceptable). Predicted results from the optimum kinetic parameters were compared with the experimental data for hemicellulose. Fig. 2b showed that there existed obvious deviations in the whole range of temperatures between the calculated data and experimental data.

3.1.3 Lignin. It can be seen from Fig. 1b that lignin resulted in wide DTG peaks compared to the sharp DTG peak of cellulose. The thermal decomposition of lignin occurred in a broad temperature range (450–850 K), due to the broad range of activities of the chemical bonds in lignin aromatic rings. Lignin is a highly cross-linked polyphenolic aromatic polymer and is composed of *p*-hydroxyphenyl, guaiacyl and syringil units.

The kinetic parameters obtained from the fitting procedure using the single Gaussian-DAEM-reaction model were listed in Table 1. It can be seen that the kinetic parameters were $k_0 = 8.511 \times 10^{11} \text{ s}^{-1}$ and $E_0 = 165.61 \text{ kJ mol}^{-1}$ for lignin. It was shown that the value of Fit for hemicellulose was 7.59%, which went beyond the acceptable range. The results of the fitting procedure using the single Gaussian-DAEM-reaction model for hemicellulose were reported in Fig. 2c. It can be observed from Fig. 2c that the prediction model was not able to describe the experimental data correctly, because obvious deviations were found, especially for higher temperatures.

3.2 Double Gaussian-DAEM-reaction model

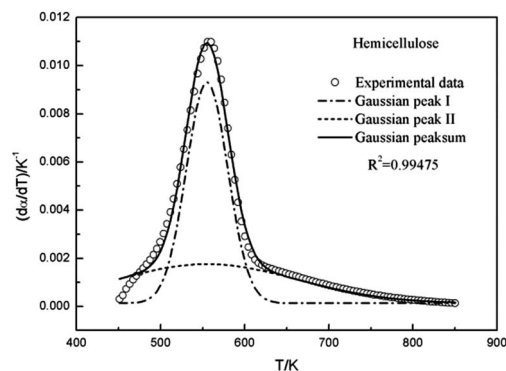
Multi-peaks method in the origin lab was first utilized in this work to fit multiple peaks to a DTG curve by Gaussian functions using the Levenberg–Marquardt algorithm. The DTG curves of hemicellulose and lignin based on Gaussian distribution were shown in Fig. 3. It can be observed from Fig. 3 that two Gaussian distribution models could fit the DTG curves of hemicellulose and lignin very well since the coefficient correlation (R^2) was equal to 0.99475 and 0.99705, respectively ($R^2 > 0.99$ is generally acceptable). Accordingly in this work, a double Gaussian-DAEM-reaction model based on multi-peaks method was developed to describe the pyrolysis processes of hemicellulose and lignin. In the double Gaussian-DAEM-reaction model, the global $d\alpha(T)/dT$ is the linear combinations of $d\alpha_j(T)/dT$ as shown in eqn (8).

$$\frac{d\alpha(T)}{dT} = \sum_{j=1}^2 c_j \frac{d\alpha_j(T)}{dT} \quad (8)$$

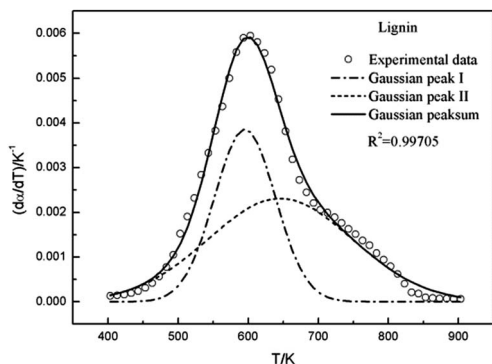
Similarly, the global $f(E)$ is the linear combinations of $f_j(E)$ as shown in eqn (9).

$$f(E) = \sum_{j=1}^2 c_j f_j(E) \quad (9)$$

In both eqn (8) and (9), c_j represents the fraction of volatiles produced by the j^{th} partial reaction.

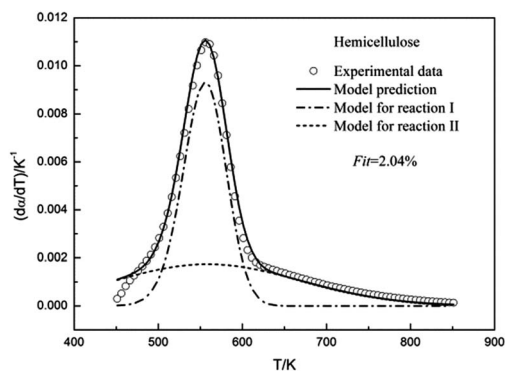


(a)

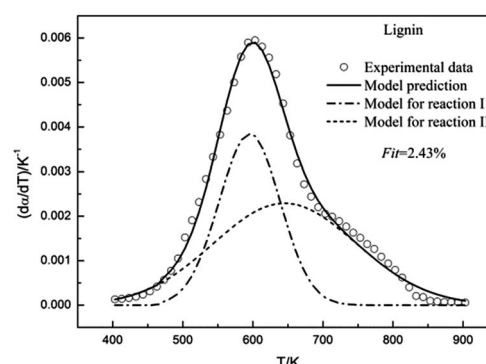


(b)

Fig. 3 DTG curves of hemicellulose and lignin based on multi-peaks method.



(a)



(b)

Fig. 4 Experimental and calculated DTG curves of hemicellulose and lignin.

Table 2 Fitted kinetic and statistical parameters for pyrolysis of hemicellulose and lignin by the double Gaussian-DAEM-reaction model

Sample	c_j	$k_{0,j}/s^{-1}$	$E_{0,j}/kJ\ mol^{-1}$	$\sigma_j/kJ\ mol^{-1}$	Fit (%)
Hemicellulose					2.04
Reaction I	0.5983	6.501×10^{14}	180.00	6.650	
Reaction II	0.4017	2.495×10^8	114.45	22.787	
Lignin					2.43
Reaction I	0.4179	5.559×10^{11}	159.59	10.448	
Reaction II	0.5821	6.109×10^{11}	174.19	27.448	

The model estimated parameters using the double Gaussian-DAEM-reaction model based on the multi-peaks method for hemicellulose and lignin were listed in Table 2.

3.2.1 Hemicellulose. In agreement with previous studies,^{38,39} the pyrolysis process appears to have two partial reactions in this study. Hemicellulose degradation was considered as two overlapped steps represented by two fitted Gaussian peaks in the DTG curves. As shown in Fig. 3a, the fitted Gaussian peak I was used to describe partial reaction I. At temperature higher than 650 K, DTG curve of hemicellulose had a flat tailing, which was assumed as partial reaction II. And the partial reaction II was described by the fitted Gaussian peak II.

The double Gaussian-DAEM-reaction model was used to study the pyrolysis kinetics of hemicellulose. The results of the

fitting procedure were shown in Fig. 4a. It can be seen from Fig. 4a that there was a close agreement between the prediction model and the experimental data for the higher temperatures, and negligible deviations were found for the lower temperatures. The single Gaussian-DAEM-reaction model was generally used to investigate the pyrolysis process of hemicellulose.⁴⁰ Compared with the single Gaussian-DAEM-reaction model, the value of Fit in eqn (7) using the double Gaussian-DAEM-reaction model decreased to 2.04% from 7.57%. It can be observed that double Gaussian-DAEM-reaction model offered a more reliable method for prediction of the pyrolysis behaviour of hemicellulose. The kinetic parameters obtained from the fitting procedure were listed in Table 2. It was found that for hemicellulose the kinetic parameters of partial reaction I were $k_{0,1} = 6.501 \times 10^{14}\ s^{-1}$, $E_{0,1} = 180\ kJ\ mol^{-1}$ and $\sigma_1 = 6.65\ kJ\ mol^{-1}$; and the kinetic parameters of partial reaction II were $k_{0,2} = 2.495 \times 10^8\ s^{-1}$, $E_{0,2} = 114.45\ kJ\ mol^{-1}$ and $\sigma_2 = 22.787\ kJ\ mol^{-1}$. In consideration of method concluding two partial reactions, similar results have been obtained from the research of hemicellulose by Várhegyi *et al.* using the competitive reaction model ($k_{0,1} = 3.2 \times 10^5\ s^{-1}$, $E_{0,1} = 84\ kJ\ mol^{-1}$; $k_{0,2} = 1.0 \times 10^{17}\ s^{-1}$, $E_{0,2} = 193\ kJ\ mol^{-1}$) with a heating rate of $10\ K\ min^{-1}$.³² These data indicates that the description of hemicellulose pyrolysis through the double Gaussian-DAEM-reaction model is valid.

The double Gaussian-DAEM-reaction model for hemicellulose can be explained by two partial reactions in terms of

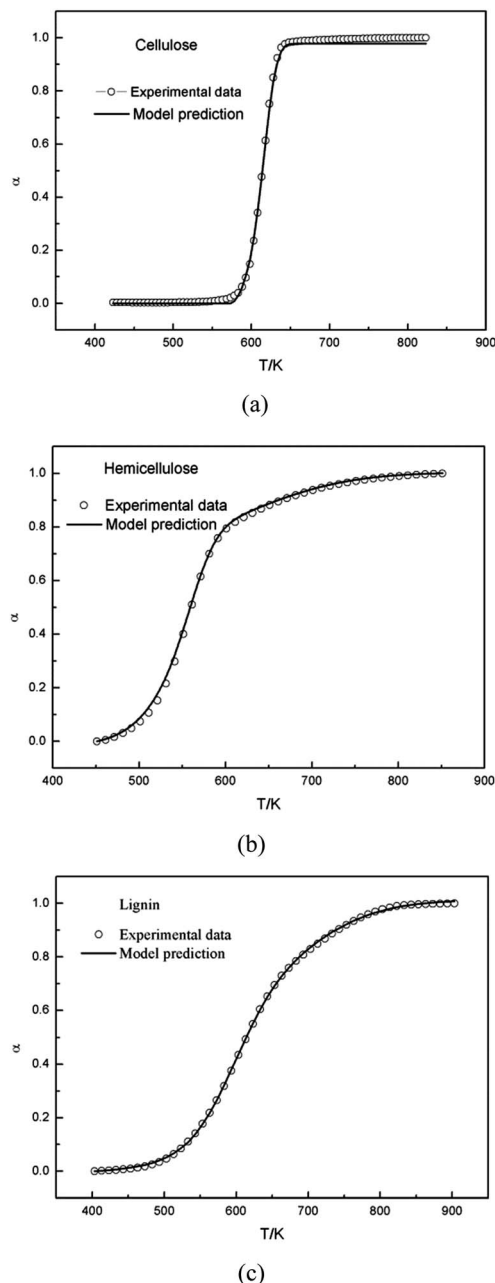


Fig. 5 Experimental and calculated $\alpha(T)$ curves of cellulose, hemicellulose and lignin by integrating the calculated DTG curve.

chemistry.³⁸ Partial reaction I was fast and was characterized by a high volatile release and the formation of a solid product. Partial reaction I was mainly ascribed to cleavage of the glycosidic bonds, polymerization of the glycosyl units, and the decomposition of the sugar moiety within a narrow range of temperature (500–600 K). Partial reaction II was assigned to the fragmentation of other depolymerized units (xylan units), involving the slow charring process of the solid product which gave rise to a solid charred residual and further volatile formation.

3.2.2 Lignin. Thermal decomposition of lignin was considered as two overlapped steps represented by two fitted

Gaussian peaks in the DTG curves. As shown in Fig. 3b, the fitted Gaussian peak I was used to describe partial reaction I, and the fitted Gaussian peak II was regarded as partial reaction II.

The double Gaussian-DAEM-reaction model considering that two partial reactions take place with different activation energies was employed to fit the DTG curve of lignin. Predicted results from the optimum kinetic parameters have been compared with the experimental data. As is shown Fig. 4b, the double Gaussian-DAEM-reaction model predicts the experimental data very well for lignin. In Table 1 the kinetic parameters obtained from the fitting procedure for lignin pyrolysis were reported ($E_{0,1} = 159.39 \text{ kJ mol}^{-1}$, $E_{0,2} = 174.19 \text{ kJ mol}^{-1}$). According to reported literature,⁹ the single Gaussian-DAEM-reaction model was generally used to investigate the pyrolysis process of hemicellulose. Mahinpey⁹ studied the kinetic pyrolysis of lignin using the single Gaussian-DAEM-reaction model, and found the maximum activation energy in the range of 158–170 kJ mol^{-1} , which was close to the values of the kinetic parameters for lignin using the double Gaussian-DAEM-reaction model in this study. However, as stated earlier in part 3.1.3, the single Gaussian-DAEM-reaction model resulted in larger deviations than the double Gaussian-DAEM-reaction model. Besides, the calculated value of Fit in eqn (7) (Fit = 7.57%) was much larger than the double Gaussian-DAEM-reaction model (Fit = 2.04%). Therefore, the pyrolysis kinetics of lignin could be described more accurately using the double Gaussian-DAEM-reaction model than traditional single Gaussian-DAEM-reaction model. Based on the above analysis, it can be concluded that the double Gaussian-DAEM-reaction model is an effective tool for determining the pyrolysis profiles of lignin.

Várhegyi *et al.*³² reported that lignin pyrolysis resulted in 30–35% char and a large amount of low molecular mass volatiles. The two partial reactions proposed in this study could describe the thermal decomposition behavior of lignin. Partial reaction I was attributed to the formation of low molecular mass products, corresponding to the scission of various oxygen functional groups existed in lignin. Since different oxygen functionalities having different thermal stability, their scission takes place at different temperatures (500 to 700 K). Partial reaction II was assigned to the complex charring forming process involving the complete rearrangement of the carbon skeleton and the release of gas products.

3.3 $\alpha(T)$ curves

From a mathematical point of view, the $\alpha(T)$ and the DTG curves are not equivalent. Accordingly, we also tested how effective the model is to predict the $\alpha(T)$ curves with the same parameters obtained from the evaluation of the DTG curves. In theory, the model could describe the changes of the degree of conversion as a function of temperature by integrating the calculated DTG curve. Fig. 5 showed that this approach resulted in a good fit for cellulose based on the parameters obtained from the single Gaussian-DAEM-reaction model, and for hemicellulose and lignin based on the parameters obtained from the double Gaussian-DAEM-reaction model.

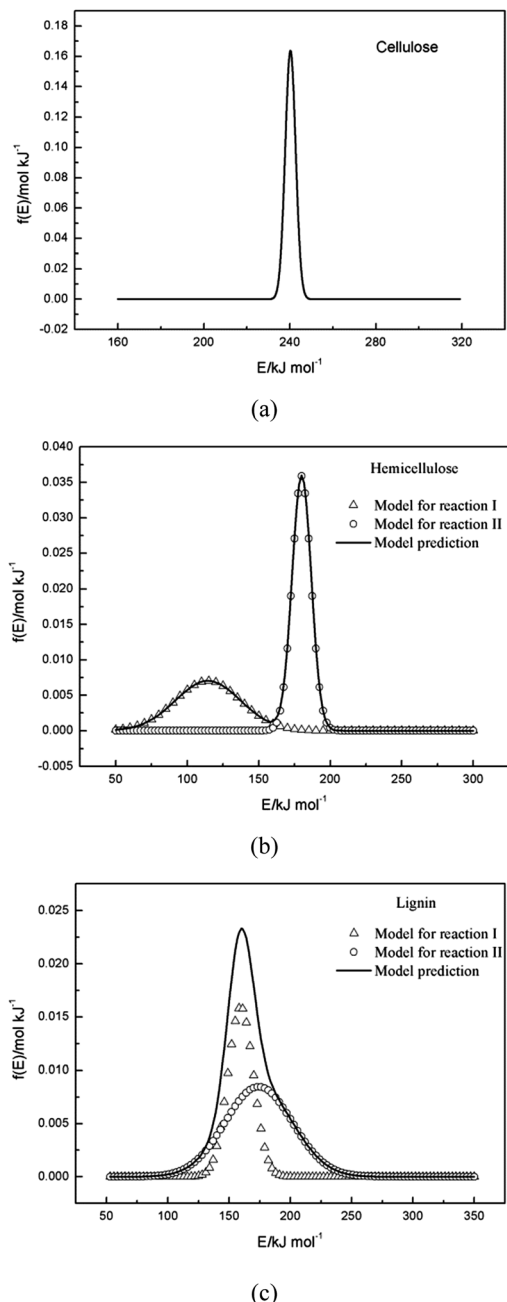


Fig. 6 The $f(E)$ curves estimated for cellulose, hemicellulose and lignin.

3.4 $f(E)$ curves

3.4.1 Cellulose. The $f(E)$ curves for cellulose were shown in Fig. 6a. It can be observed from Fig. 6a that the range of activation energy for cellulose was 232–248 kJ mol⁻¹. The pyrolysis of cellulose occurred in a small interval of activation energy ($\sigma = 2.366$ kJ mol⁻¹) and therefore was confined in a narrow temperature range (560–650 K) in DTG curves. This process was fast, and it can be concluded that the energies required to decompose different intermediate products were similar.

3.4.2 Hemicellulose. The $f(E)$ curves for hemicellulose were shown in Fig. 6b. It can be observed from Fig. 6b that the range

of activation energy for hemicellulose was 70–200 kJ mol⁻¹. Hemicellulose presented two separate Gaussian peaks of activation energy in Fig. 6b. The lower Gaussian peak had a low value of activation energy with a wide interval ($\sigma = 22.787$ kJ mol⁻¹), and it was attributed to partial reaction I. The higher peak corresponding to partial reaction II had a larger value of activation energy with a narrow interval ($\sigma = 6.65$ kJ mol⁻¹), and therefore was confined in a narrow temperature range (500–600 K). The process of partial reaction II was fast, and the energies required for the breakdown of the bonds of the glycosidic groups, polymerization of the glycosyl units and the decomposition of the sugar moiety were similar.

3.4.3 Lignin. The $f(E)$ curves for lignin were shown in Fig. 6c. From Fig. 6c, it can be seen that the range of activation energy for lignin was 125–250 kJ mol⁻¹. As shown in Fig. 6c, lignin displayed two overlapped Gaussian peaks, because the mean activation energies of the two partial reactions were close. It can be concluded that the energies required for the scission of the functional groups in reaction I and for complete rearrangement of the carbon skeleton were quite similar in reaction II. In comparison with reaction I ($\sigma = 10.448$ kJ mol⁻¹), reaction II has a larger value of activation energy with a wide interval ($\sigma = 27.448$ kJ mol⁻¹), and was confined in a wide temperature range (400–900 K).

4. Conclusions

The pyrolysis processes of cellulose, hemicellulose and lignin were investigated by TGA in N₂ atmosphere with a nonisothermal temperature program. The single Gaussian-DAEM-reaction model could describe the data of cellulose very well, while it could not describe the data of hemicellulose or lignin correctly. In order to describe the thermal decompositions of hemicellulose and lignin more accurately, a novel double Gaussian-DAEM-reaction model considering two partial reactions was developed and used for the pyrolysis kinetics of hemicellulose and lignin. Calculated results from determined kinetic parameters provided a good fit for the DTG data of hemicellulose and lignin. The ranges of activation energies for cellulose, hemicellulose and lignin were 230–250 kJ mol⁻¹, 90–200 kJ mol⁻¹ and 100–230 kJ mol⁻¹, respectively. Results from the modeling procedure indicated that the novel double Gaussian-DAEM-reaction model reported in this study is an effective and accurate at determining the pyrolysis behaviour of hemicellulose and lignin.

Acknowledgements

Financial support from the National Basic Research Program of China (973 program, Grant no. 2011CB201502), National Natural Science Foundation of China through contract (Grant no. 11375249) and the “Strategic Priority Research Program” of Chinese Academy of Sciences (Grant no. XDA07010303) are greatly acknowledged.

Notes and references

- 1 L. Gašparovič, J. Labovský and J. Markoš, *Chem. Biochem. Eng. Q.*, 2012, **26**, 45.

- 2 Z. Li, C. Liu and Z. Chen, *Bioresour. Technol.*, 2009, **100**, 948.
- 3 T. Faravelli, A. Frassoldati and G. Migliavacca, *Biomass Bioenergy*, 2010, **34**, 290.
- 4 F. Y. Ma, Y. L. Zeng and J. J. Wang, *Bioresour. Technol.*, 2013, **128**, 417.
- 5 S. Yaman, *Energy Convers. Manage.*, 2004, **45**, 651.
- 6 M. Balat, *Energy Sources, Part A*, 2008, **30**, 620.
- 7 P. Giudicianni, G. Cardone and R. Ragucci, *J. Anal. Appl. Pyrolysis*, 2013, **100**, 213.
- 8 S. Chu, A. V. Subrahmanyam and G. W. Huber, *Green Chem.*, 2013, **15**, 125.
- 9 T. Mani, P. Murugan and N. Mahinpey, *Ind. Eng. Chem. Res.*, 2009, **48**, 1464.
- 10 J. Cho, S. Chu and P. J. Dauenhauer, *Green Chem.*, 2012, **14**, 428.
- 11 P. Tiwari and M. Deo, *AIChE J.*, 2012, **58**, 505.
- 12 G. Varhegyi, H. Chen and S. Godoy, *Energy Fuels*, 2009, **23**, 646.
- 13 J. A. Caballero and J. A. Conesa, *J. Anal. Appl. Pyrolysis*, 2005, **73**, 85.
- 14 P. Budrugaec, *J. Therm. Anal. Calorim.*, 2002, **68**, 131.
- 15 A. Coats and J. Redfern, *Nature*, 1964, **201**, 69.
- 16 A. Soria-Verdugo, N. Garcia-Hernando and L. M. Garcia-Gutierrez, *Energy Convers. Manage.*, 2013, **65**, 239.
- 17 T. Sonobe and N. Worsuwanarak, *Fuel*, 2008, **87**, 414.
- 18 K. Miura, *Energy Fuels*, 1995, **9**, 302.
- 19 K. Miura and T. Maki, *Energy Fuels*, 1998, **12**, 864.
- 20 M. Güneş and S. Güneş, *Thermochim. Acta*, 1999, **336**, 93.
- 21 H. Zhou, Y. Q. Long and A. H. Meng, *Thermochim. Acta*, 2013, **566**, 36.
- 22 J. J. M. Orfão, F. J. A. Antunes and J. L. Figueiredo, *Fuel*, 1999, **78**, 349.
- 23 M. J. Antal, G. Várhegyi and E. Jakab, *Ind. Eng. Chem. Res.*, 1998, **37**, 1267.
- 24 J. M. Cai, W. X. Wu and R. H. Liu, *Bioresour. Technol.*, 2013, **132**, 423.
- 25 Z. Q. Li, W. M. Zhao, B. Hong and C. Liu, *Bioresour. Technol.*, 2008, **99**, 7616.
- 26 T. J. Chen, J. L. Wu and J. Z. Zhang, *Bioresour. Technol.*, 2014, **153**, 223.
- 27 T. J. Chen, C. Wu and R. H. Liu, *Bioresour. Technol.*, 2011, **102**, 6178.
- 28 J. H. Flynn and L. A. Wall, *J. Res. Natl. Bur. Stand.*, 1966, **70**, 487.
- 29 C. D. Doyle, *J. Appl. Polym. Sci.*, 1961, **5**, 285.
- 30 J. M. Cai and L. Q. Ji, *J. Math. Chem.*, 2007, **42**, 547.
- 31 V. B. Várhegyi, B. Z. Bobály and E. Jakab, *Energy Fuels*, 2010, **25**, 24.
- 32 G. Várhegyi, M. J. Antal Jr and E. Jakab, *J. Anal. Appl. Pyrolysis*, 1997, **42**, 73.
- 33 B. B. Uzun, E. Apaydin-Varol and F. Ateş, *Fuel*, 2010, **89**, 176.
- 34 P. R. Patwardhan, R. C. Brown and B. H. Shanks, *ChemSusChem*, 2011, **4**, 1629.
- 35 P. R. Patwardhan, R. C. Brown and B. H. Shanks, *ChemSusChem*, 2011, **4**, 636.
- 36 P. R. Patwardhan, J. A. Satrio and R. C. Brown, *Bioresour. Technol.*, 2010, **101**, 4646.
- 37 J. M. Cai, S. Y. Yang and T. Li, *Bioresour. Technol.*, 2011, **102**, 3642.
- 38 C. Font Palma, *Appl. Energy*, 2013, **111**, 129.
- 39 D. Ferdous, A. K. Dalai and S. K. Bej, *Energy Fuels*, 2002, **16**, 1405.
- 40 J. M. Cai, W. X. Wu and R. H. Liu, *Green Chem.*, 2013, **15**, 1331.