

## Study on effective extraction of chicken feather keratins and their films for controlling drug release†

Cite this: *Biomater. Sci.*, 2013, **1**, 528

Xiao-Chun Yin, Fang-Ying Li, Yu-Feng He, Yan Wang and Rong-Min Wang\*

We report the fabrication of keratin films with porosity using keratin, for controlled drug delivery systems. Feathers are currently an important waste product from the poultry industry, however abandoned down products cause an environmentally difficult disposal problem as they are not efficiently extracted and applied. In this paper, feather keratin was extracted using a high-efficiency method. The yield of pure keratin was up to 90%. Its molecular weight was 20 kDa with low dispersity. The films, based on the extracted keratin, were prepared using a simple method, and showed good mechanical properties. Furthermore, the feather keratin films were used to load and release drugs. The resultant feather keratin biopolymer films were pH-responsive and showed controllable drug-release behavior. In summary, we achieved a simple method to reutilize disused feathers. It could be an attractive candidate for applications in the biomedical field.

Received 25th October 2012,  
Accepted 27th January 2013

DOI: 10.1039/c3bm00158j

[www.rsc.org/biomaterialsscience](http://www.rsc.org/biomaterialsscience)

### Introduction

Over the past decade, the use of biodegradable polymers for the administration of pharmaceuticals and biomedical agents has increased dramatically. The most important biomedical applications of biodegradable polymers are in the areas of controlled drug delivery systems (DDSs).<sup>1</sup> In controlled DDSs, an active therapeutic is incorporated into a polymeric network structure in such a way that the drug is released from the material in a predefined manner.<sup>2</sup> A variety of synthetic and natural polymers have been applied as drug carriers.<sup>3</sup> In general, synthetic polymers offer greater advantages over natural ones in that they can be tailored to give a wider range of properties. However, toxicity is more likely to be associated with these synthetic polymers. Therefore, a safer carrier becomes necessary. Natural polymers may generally be considered safer than synthetic polymers. Therefore, natural polymers have certain advantages as drug delivery carriers.

Several proteins, including collagen, albumin, gelatin, fibroin and keratin, have been investigated in the development of naturally-derived biomaterials.<sup>4</sup> Of these proteins, keratin-based materials show promise for revolutionizing the biomaterial world<sup>5</sup> because of their biocompatibility, biodegradability,<sup>6</sup> mechanical durability, and natural abundance. Over the

past century, research has focused on the extraction, purification and characterization of keratin from hair, wool fibers, *etc.* It has led to the development of keratin based biomaterials, which can be applied in controlled DDSs. Feathers, the most abundant keratinous biomass worldwide, are a valuable and renewable protein source.<sup>7</sup> However, feathers are currently an important waste product in the poultry industry, causing an environmentally difficult disposal problem as they are not efficiently extracted and applied. Therefore, from both an economic and environmental point of view, it is quite desirable to develop an effective and profitable process to use these kinds of resources.<sup>8</sup> Feathers are mainly composed of the structural protein, keratin. Keratin is not a single substance. In fact, it is composed of a complex mixture of proteins. Keratin is insoluble in many common solvents, such as dilute acids, alkalines, water, and organic solvents.<sup>9</sup>

There are several procedures available to dissolve feather keratin. For example, acid and alkali hydrolysis,<sup>10</sup> the reduction of disulfide bonds with alkaline sodium sulfide solutions, a combination of enzymatic and chemical treatment,<sup>11</sup> the use of ammonium copper hydroxide,<sup>12</sup> and the oxidation of disulfide bonds with performic acid.<sup>13</sup> These dissolution methods are in addition to peptide bond scission. A common method to extract keratin involves the use of reducing agents because the native form is hard to obtain, due to its highly cross-linked state by disulfide bonds. The use of the Shindai method, which omits the use of detergent, provides a sufficient amount of extracted proteins for analysis and can avoid protein hydrolysis.<sup>14</sup> Reducing agents, such as dithiothreitol and 2-mercaptoethanol, work by cleaving keratin's disulfide bonds and thus increasing its solubility.<sup>9</sup>

Key Laboratory of Eco-Environment-Related Polymer Materials of Ministry of Education, Key Laboratory of Polymer Materials of Gansu Province, Institute of Polymer, Northwest Normal University, Lanzhou 730070, China.

E-mail: wangrm@nwnu.edu.cn; Tel: +86-931-7970358

†Electronic supplementary information (ESI) available. See DOI: 10.1039/c3bm00158j

The ability to fabricate a variety of drug delivery constructs with different morphologies such as films, gels, foams, micro-particles and scaffolds contributes to a broad application of the biomaterial.<sup>15</sup> It is possible to develop drug delivery carriers based on keratin. The aim of this study was to obtain a simple and effective method for extracting keratin from chicken feathers, to prepare keratin films based on the extracted feather keratin and investigate the controllable drug release properties of keratin films. Here, rhodamine B was chosen as a kind of water-soluble model drug molecule, which measured the drug delivery function of the keratin carriers.

## Materials and methods

Chicken feathers were collected at a local poultry farm in Gansu Province, western China. All the chemicals used in the experiments were of analytical grade and used without further purification.

### Extraction of keratin from feathers

Feather keratin was extracted under reducing conditions with the so-called Shindai method.<sup>19</sup> The process of extraction is described in the ESI,<sup>†</sup> and included three steps: ethanol pretreatment, hydrochloric acid pretreatment and 2-mercaptoethanol deoxidization. The typical procedure was as follows: raw feathers were washed 3 times with water to remove sand and dust. Then, they were dried and cut into small filaments with lengths of 1–2 mm. 3 g of clean feathers were refluxed in EtOH–H<sub>2</sub>O for 2 h. Then they were pretreated with HCl solution for 2 h to remove grease. The ethanol and HCl were filtered off and the clean pretreated feathers were stored at room temperature.

The pretreated feathers were immersed in 150 mL of a solution containing urea (0.33 mol L<sup>-1</sup>), SDS (0.05 mol L<sup>-1</sup>), 2-mercaptoethanol (0.095 mol L<sup>-1</sup>) and Tris (0.016 mol L<sup>-1</sup>) at pH 8.0. The mixture was stirred at 70 °C for 2 h under a N<sub>2</sub> atmosphere. After being filtered, a keratin solution was obtained. The solution was acidified, and the keratin was precipitated with ethanol. Subsequently, the keratin sedimentation was washed five times with distilled water and lyophilized.

Reactions were performed in a flask containing 150 mL reduced keratin solution, the solution was agitated at 70 °C. Then, 5 mL of chloroacetic acid solution (0.14 g mL<sup>-1</sup>) was added dropwise in 5 min for regulating the pH value to 8–9. After reacting for 1 h, the reaction was stopped and acidified. The keratin was precipitated with HCl solution, washed with water and lyophilized, which afforded the modified keratin.

### Preparation of feather keratin films

The aqueous dispersion of the reduced keratin was mixed with a certain amount of glycerol. The mixture was stirred for 1 h at room temperature. These film-forming dispersions were poured into polystyrene petri dishes (10 cm diameter) and dried in a ventilated oven at 50 °C for 24 h. The films were

then removed from the casting surface (petri dish) and stored for analysis. The thickness of the films was controlled by varying the volume of the keratin dispersion poured into the petri dish. Film thickness was measured with a micrometer with a sensitivity of 0.001 mm. Five to ten thickness measurements were carried out for each film, from which an average was obtained.

### FT-IR spectroscopy

The FT-IR spectra of the feather keratin were measured with a model FTS 3000 FT-IR Nexus spectrometer from DIGILAB equipped with a ZnSe ATR cell (model Smart Performer). The analysis was performed in triplicate.

### Circular dichroism (CD)

CD spectra were measured using a model J-810 CD spectrometer from JASCO with a 1 mm path length at room temperature. The wavelength was 180 nm <  $\lambda$  < 300 nm. Solutions were highly diluted by the tripartite water. Then, it was supplied for CD measurement.

### Elemental analysis and amino acid analysis

Elemental analysis (C, H, N, and S) was performed on the freeze-dried samples of the feather keratin using an elementary analyzer (Vario EL from Elementar, Germany). The amino acid composition of the feather keratin was determined using a Hitachi 835-50 Amino Acid Analyzer. Free amino acids were analyzed by HPLC according to the AccQ-Tag method (Waters). The eluate was detected at 254 nm. The column of keratin solution samples was 10 mL using tetrahydrofuran as solvent. Samples were analyzed in duplicate (error: <2%). The quantitative amino acid composition, expressed as mol% for each amino acid, was determined by external standard calibration (Amino Acid Standard H, Pierce).

### MALDI-TOF MS

The molar mass range of the extracted feather keratin was measured by a matrix-assisted laser desorption ionization time-of-flight mass spectrometer (MALDI-TOF MS) (Biflex III from Bruker Daltonics) equipped with a 337 nm nitrogen laser. The matrix was *trans*-3,5-dimethoxy-4-hydroxycinnamic acid.

### Scanning electron microscopy (SEM)

The surface morphology of the keratin film was observed with scanning electron microscopy (JSM-6701F, Japan). The specimen was washed in ethanol, dried, coated with gold under vacuum and observed.

### Thermogravimetry measurement

All the samples (10.0 mg) used had been dried in a vacuum at 70 °C for 12 h. The thermal degradation test was conducted on a TG/DTA (Pyris Diamond, PerkinElmer) at a heating rate of 10 °C min<sup>-1</sup> under nitrogen. The change in the weight differential difference with temperature was recorded.

## Mechanical properties

Stress–strain curves were determined by uniaxial measurement using an INSTRON 5500 mechanical tester (Instron, USA). For that, the films were cut into rectangular pieces ( $10 \times 20 \text{ mm}^2$ ) and fixed on the grips of the device with a gap of 20 mm. The films were tractioned at a speed of  $20 \text{ mm min}^{-1}$ . The ultimate strength, the ultimate elongation and Young's modulus were calculated from five independent measurements.

## Preparation of drug-loaded keratin films and controllable release properties

25 mg of rhodamine B (RB) was stirred in 5 mL of distilled water at room temperature until a homogeneous solution was obtained. 0.5 g of glycerol was added to the 30 mL of the aqueous dispersion containing the reduced keratin (1 g keratin/30 mL dispersion), which was then mixed with the drug solution. The film-forming dispersion was prepared under constant magnetic stirring at room temperature and mixed for 1 h. The films were then poured into polystyrene petri dishes (10 cm diameter) and dried in a ventilated oven at  $50 \text{ }^\circ\text{C}$  for 24 h. After this, the drug-loaded keratin films were removed from the casting surface (petri dish) and stored. The drug-loaded keratin films were immersed in 300 mL water. At appropriate time intervals, the amount of drug released was determined by UV-vis spectra (in aqueous solution measured at 553.5 nm).

## Results and discussion

### Extraction of keratin from chicken feathers

Keratin, present in feathers, is insoluble in polar solvents like water, weak acids and bases, as well as in apolar solvents while it is active because cystine can be reduced, oxidized and hydrolyzed.<sup>16</sup> The addition of reducing agent for scissoring cystine decreases the strength of the fibers. Therefore, it is possible to dissolve keratin using solvents by scissoring –S–S– bonds and adding hydrogen bonds.<sup>17</sup> Here, a simple and powerful procedure was designed which involved two steps of pretreatment and using 2-mercaptoethanol to scissor the disulfide bonds under moderately alkaline conditions, and urea to break the hydrogen bonds. Although it has been reported that 2-mercaptoethanol and urea have been used in reducing keratins for wool keratins,<sup>18</sup> many procedures have involved lots of reacted agents.<sup>19</sup> In order to calculate the yield of the extracted keratin, the feathers were cleaned, dried and weighed before pretreatment.

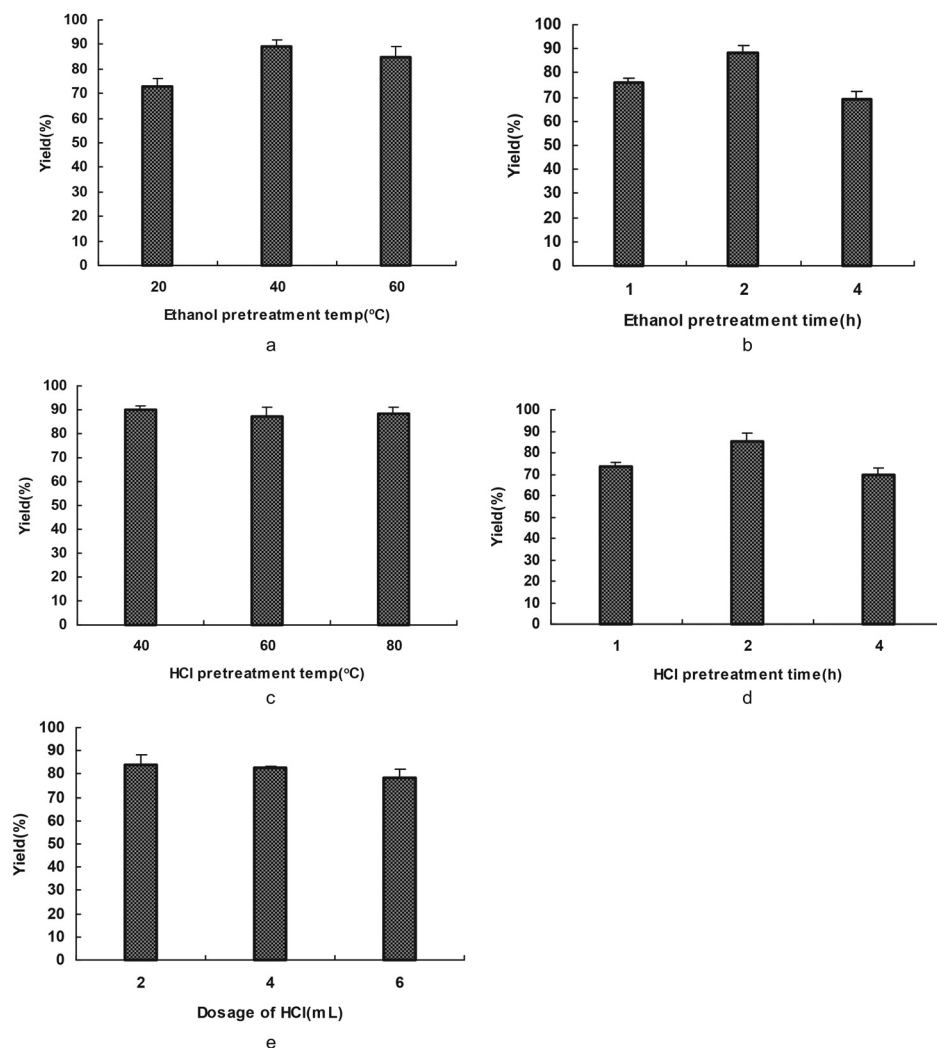
Due to the presence of numerous disulfide bonds and hydrogen bonds, excess reducing agent is necessary. In this study, 2-mercaptoethanol was used for the scission of disulfide bonds. The amount of 2-mercaptoethanol used was lower than that of Schrooyen's method,<sup>18</sup> which used white body feathers from broilers. Sodium dodecyl sulfate (SDS), a typical surfactant, was used to protect the reduced keratin as it formed complexes with the keratin, and prevented extensive aggregation of the protein after dissolution. The yield of pure keratin

obtained was 93%. This exceeded the results obtained by Schrooyen who obtained a yield of about 75%, based on the starting weight of the feathers.

In general, some treatment conditions, such as temperature, time, pH value and dosage of the reagents, had a significant influence on the yield and the molecular weight of the extracted keratin. Therefore, these factors were investigated.

**Influencing factors on the solubilization of keratin in pretreatment.** In order to remove the fat on the feather surfaces and break most of the hydrogen bonds in the feather keratin, EtOH and HCl were used to pretreat the feathers. This is different from the methods used previously, which used petroleum ether and led to secondary pollution.<sup>18,20</sup> Here, we found that the dosage of EtOH and HCl in pretreatment influenced the keratin yield, which is also influenced by time and temperature. The rate of dissolution of the feather keratin at various pretreatment temperatures and pretreatment times was determined. Fig. 1 shows the relationship between the keratin yield and the effects of the different factors in the pretreatment on solubilization. The optimum conditions for pretreatment were as follows: ethanol pretreatment should be performed at  $40 \text{ }^\circ\text{C}$  for 2 h and HCl pretreatment should be performed at  $40 \text{ }^\circ\text{C}$  for 2 h. It was shown that the keratin yield increased when the pretreatment temperature and time increased. However, higher temperatures or longer time periods resulted in keratin of lower molecular weight. The reason for this was that high temperatures or long time periods led to peptide bond scission. Superfluous HCl also reduced the yield of feather keratin due to peptide bond scission.

**Influencing factors on the solubilization of keratin during reduction.** The influences of some important factors on the solubilization were also investigated. It was found that the reducing agent, 2-mercaptoethanol, was a key reagent in the extraction process. In general, in order to react completely, an excess of 2-mercaptoethanol was used to scissor the disulfide bonds. The  $\text{pK}_a$  value of 2-mercaptoethanol was about 9.5. This meant that 2-mercaptoethanol could not be ionized at low pH values, which resulted in a loss of reactive activity with keratin. The high pH value was necessary to obtain a high extraction yield, as a high concentration of the reactive thiolate anion from 2-mercaptoethanol was helpful in the scission of the disulfide bonds. In addition, parts of the disulfide bonds could be hydrolyzed by hydroxide ions in basic solution.<sup>20</sup> However, degradation of the protein, which was caused by peptide bond scission and deamidation of asparagine and glutamine residues, could not be excluded if the pH value was more than 10.0. This resulted in a low yield or low molecular weight of the extracted keratin. There are numerous hydrophobic amino acids in feathers. So, 2-mercaptoethanol was difficult to approach the site of the disulfide bonds, which caused difficulty in reducing the disulfide bonds. Therefore, urea was used to increase the accessibility of the disulfide bonds to thiol by breaking the hydrogen-bonded structures and thus swelling the feather filaments. The diffusion rate of 2-mercaptoethanol into the feather filaments depended on the



**Fig. 1** The influence of pretreatment on solubilization. (a) and (c) show the effects of ethanol pretreatment temperature and HCl pretreatment temperature on the keratin yield. (b) and (d) show the effects of time in ethanol and HCl pretreatment on the keratin yield. (e) shows the effect of the dosage of HCl on the keratin yield.

urea concentration and the pH, which were similar to those in a previously published method.<sup>18,21</sup> Therefore, less urea and a higher pH value were necessary to establish equal extraction yields. Temperature and time also had a significant influence on the extraction yield. Too low temperatures or too short time periods easily caused incomplete solubilization. In contrast, too high temperatures or too long time periods led to the scissoring of the peptide bond.

As reduced keratin can be re-oxidized easily in air, a gel was rapidly formed as a result of the cross-linking of the polyfunctional keratin chains. Here, SDS, was used as a highly effective surfactant that lowers the surface tension of aqueous solutions. SDS is a negatively charged surfactant; this new negative charge is greater than the original charge of that protein, so the charge of the protein can be ignored. The electrostatic repulsion that is created by the binding of SDS causes proteins to unfold. Thus, SDS was used to protect the reduced keratin as it formed complexes with the keratin and prevented extensive protein aggregation after the keratin was reduced. We

thought that this procedure could also be carried out by chemical modification with ingredients which contain carboxyl compounds.

In summary, the optimal processes and conditions for extracting up to 90% of the keratin from feathers were as follows: (I) EtOH pretreatment: 40 °C, 2 h. (II) HCl pretreatment: 1 mL of HCl for 1 g of feathers at 40 °C for 2 h. (III) 2-Mercaptoethanol deoxidization: 2 g of feathers, 0.5 mL of 2-mercaptoethanol, feather : SDS = 1 : 0.8(g/g), feather : urea = 1 : 1(g/g), 70 °C, 2 h under a nitrogen atmosphere.

#### Characterization of extracted feather keratin

**FT-IR spectra.** In the FT-IR spectra of the feather keratin, the characteristic absorption peaks near 1643, 1527 and 1237  $\text{cm}^{-1}$ , were assigned to the peptide bonds ( $-\text{CONH}-$ ) that originated from bands known as amide I, amide II, and amide III, respectively. Amide I was useful in the analysis of the proteins and was mainly related to  $\text{C}=\text{O}$  stretching, and occurred in the range 1700–1600  $\text{cm}^{-1}$ . Amide II, which falls in the

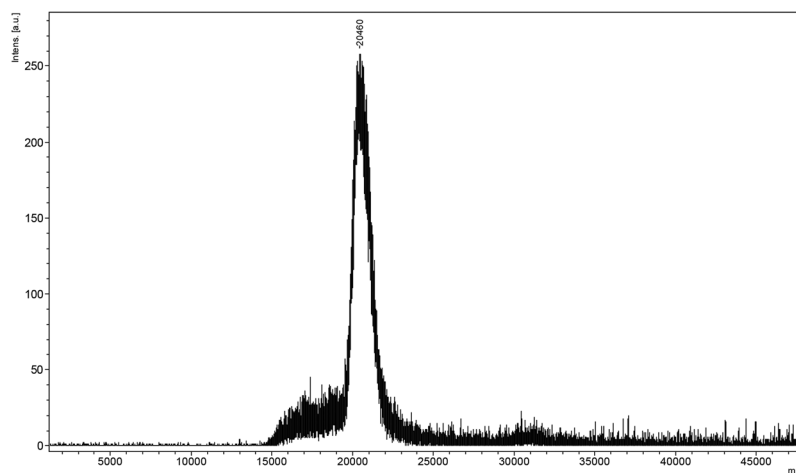


Fig. 2 The MALDI-TOF chart of the extracted keratin.

1540–1520  $\text{cm}^{-1}$  range, was related to N–H bending and the C–H stretching vibration. Amide III occurred in the range 1220–1300  $\text{cm}^{-1}$ , and resulted from in phase combination of C–N stretching and the C=O bending vibration. The peaks at 990  $\text{cm}^{-1}$  and 580  $\text{cm}^{-1}$  were the characteristic absorptions of the C–S and S–S bonds.<sup>22,23</sup> In addition, the positions of these bands indicated the conformations of the protein material.<sup>24,25</sup> 1650  $\text{cm}^{-1}$  and 1630  $\text{cm}^{-1}$  for amide I, 1540  $\text{cm}^{-1}$  and 1520  $\text{cm}^{-1}$  for amide II, and 1230  $\text{cm}^{-1}$  and 1270  $\text{cm}^{-1}$  for amide III.<sup>26</sup>

**Circular dichroism spectra.** The circular dichroism (CD) spectra in the far UV region (180–250 nm) probe the secondary structures of proteins. The CD spectra of the feather keratin suggested that the secondary structures were rich in  $\beta$ -structure. Generally, the secondary structure of proteins was determined by comparing with the CD data for poly-L-lysine whose secondary structure is adjustable, and the peak in the CD spectra of poly-L-lysine around 215 nm is attributable to the  $\beta$ -structure.<sup>27</sup> Here, the peak near 215 nm disappeared, and shifted to 200 nm, which is attributable to a random coil. This was caused by a relative decrease in the  $\beta$ -structure, which was the dominant secondary structure in the sample.

**MALDI-TOF MS results.** MALDI-TOF MS (matrix-assisted laser desorption ionization time-of-flight mass spectrometry) is an effective method for measuring proteins with high molecular weight, and was applied to characterize the extracted feather keratin. Fig. 2 shows the MALDI-TOF results for the extracted keratin. The molecular weight of the extracted keratin was 20.46 kDa. Thus, assuming an average molecular weight of 100 for each amino acid, the obtained keratin included 200 units of amino acid in one molecule. It was concluded that the extracted feather keratin was pure and homogeneous. The extracted feather keratin was also stable because it did not decompose or aggregate.

**Elemental analysis and amino acid analysis results.** The feather keratin was characterized by elemental analysis and amino acid analysis. As serious breakages occurred during the acid-hydrolysis of the proteins during the amino acid analysis,

Table 1 Amino acid composition of feather keratin

Amino acid	Ala	Cys <sup>a</sup>	Pro	Ser	Glu	Leu
Content in keratin (mol%)	29.54	14.42	10.12	6.98	5.58	5.07
Amino acid	Gly	Val	Asp	Arg	Thr	Ile
Content in keratin (mol%)	4.75	4.26	3.97	3.7	3.62	3.29
Amino acid	Phe	Tyr	Lys	His	Met	
Content in keratin (mol%)	2.55	1.16	0.66	0.19	0.13	

<sup>a</sup> The amount was corrected with the results of elemental analysis.

the contents of Asn, Gln, Cys, Ser, Thr and Trp were inaccurate. In general, the content of Asp was the summation of Asp and Asn, and the content of Glu was the summation of Glu and Gln. However, Trp was destroyed completely. Therefore, their contents were calculated by combining the results of elemental analysis with amino acid analysis. It was found that the average sulfur content of feather keratin was 4.0%, which was mainly from Cys and Met. Based on this data and the amino acid analysis, the molar ratio of amino acids in the feather keratin is shown in Table 1. This ratio indicated that cysteine residues occupied 14–15 mol% of the total amino acid residues in the reduced keratin as described previously. The amino acid composition of feather keratin was also characterized by a high content of Ala, Pro, and Ser, which totalled 46.64%. Simultaneously, the content of Phe and Tyr was 2.55% and 16%, respectively. Hydrophobic and hydrophilic amino acids totalled about 60.87 and 39.13 mol%, respectively. These results indicated the presence of numerous hydrophobic residues and a high content of disulfide bonds in feather keratin, causing it to be water-insoluble.

As mentioned above, we found that dry keratin could not be redissolved in water. The reason is pure keratin can be re-oxidized easily in air, causing the cross-linking of the keratin chains by reforming S–S bonds. The application of dry keratin is therefore limited. While, carboxyl compound, glycine or chloroacetic acid was also used to modify the dissolved feather keratin, and water-soluble keratin derivatives were obtained.

Dry water-soluble keratin was obtained by deposition and lyophilization. The dry keratin could also be redissolved in water. This meant that water-soluble keratin was obtained which should increase the possible application. Compared with the research of Schrooyen,<sup>18</sup> who modified the feather keratin, the modifiers we used were cheap and non-toxic.

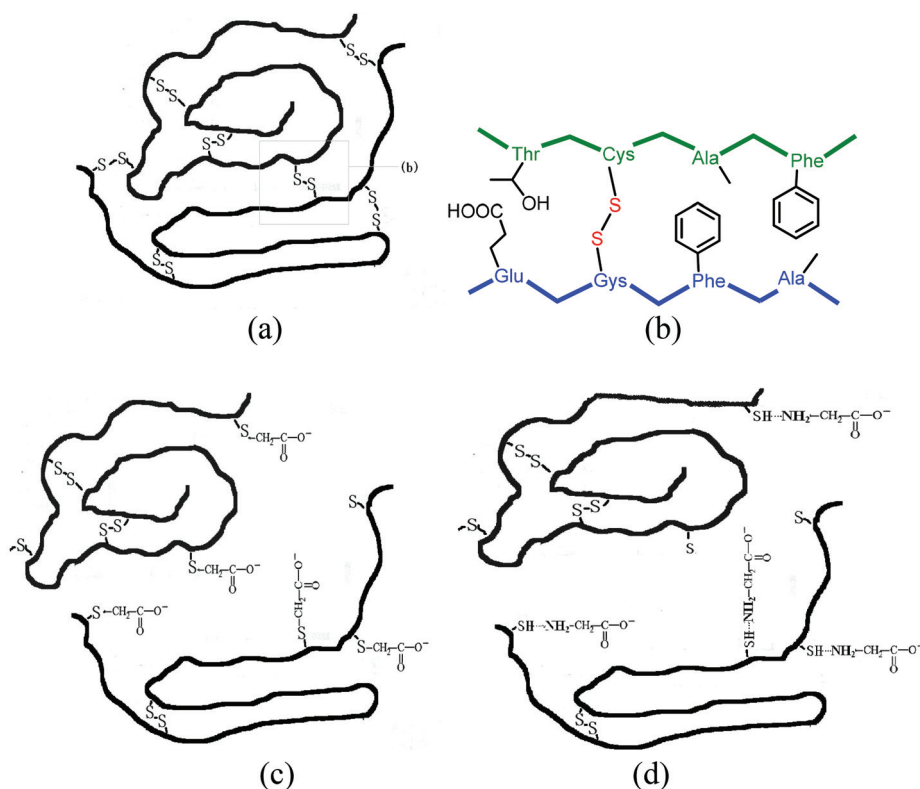
**Properties and configuration hypothesis of keratin.** There are two types of keratin, which are traditionally classified as either “soft” or “hard”. Soft keratin, which has a low number of disulfide bonds, is found in the stratum corneum and callus, whereas hard keratin is found in epidermal appendages such as feathers, hair, nails and hooves and has high disulfide content. At the molecular level, compared to other major fibrous proteins, such as collagen, elastin, and myofibrillar proteins, a distinctive feature of keratin is the occurrence of a large number of cysteine residues, which are mainly present as the disulfide-bonded dimeric amino acid cystine. Because of this extensive cross-linking and the high number of hydrophobic residues, keratin is insoluble in polar solvents such as water, as well as in apolar solvents, which limits its application. Thus, a high-efficiency method for extracting keratin from feathers is significant.

The average sulfur content of feather keratin was 4.0% (w/w), as determined by elemental analysis. These sulfur groups originated from different amino acids, such as cystine disulfide bonds (–S–S–), cysteine free thiol groups (–SH), or methionine. It was reported that the amount of free thiol groups was less than 5% (w/w) of the total cysteine in feathers.<sup>28</sup> The

content of methionine in feathers is low.<sup>29</sup> It is assumed that the 4.0% (w/w) of sulfur measured was mainly due to disulfide linkages. Therefore, one feather keratin chain contained approximately 13 disulfide groups. This meant that there were 26 cysteine residues in one keratin chain if all the disulfide bonds were broken. In this study, to scissor the disulfide bonds, a 22-fold molar excess of 2-mercaptoethanol with respect to the disulfide bonds was used. This was less than the amount used by Schrooyen (100-fold molar excess).<sup>18</sup>

Keratin is a major structural fibrous protein and provides an outer covering. It contains scores of cysteine residues (14–15%) which can build intermolecular cross-links by disulfide bonding. The hydrophobic amino acid residues (60%) of keratin chains also play a very important role in keratin configuration (see Fig. 3a and 3b). The molecular weight of the extracted keratin was 20 kDa, based on the results of MALDI-TOF MS. An average molecular weight of 96.32 for each amino acid residue of the extracted keratin was calculated. There were about 202 amino acids in the extracted keratin. This MALDI-TOF MS data agrees with the published data that feather keratin consists of 96 amino acid residues.<sup>30</sup> Based on the results of FT-IR and CD, the secondary structure of the feather keratin mainly consisted of the  $\beta$ -sheet conformation. During the extraction procedure, the  $\beta$ -sheet conformation was partly destroyed, and the keratin chains had a random coil conformation.

The reduced keratin could be re-oxidized easily in air, which caused the solubility to decrease. In this study, SDS, a



**Fig. 3** (a) and (b) show the cross-links of disulfide bonds in feather keratin. (c) and (d) show the suggested structures of reversible water-soluble keratin.

typical surfactant, was used to protect the reduced keratin as it formed complexes with the keratin. We found that the extracted keratin re-aggregated due to cross-linking of the poly-functional keratin chains, when the mixture was dialyzed extensively against distilled water. The solid soluble extracted keratin became insoluble if stored for more than 3 days. In order to prevent aggregation of the extracted keratins, carboxy compounds, such as glycine and chloroacetic acid, were used to modify the extracted keratin. It was found that the extracted keratin did not re-aggregate when carbonyl compounds were introduced to the cysteine residues of the keratin. This meant that completely soluble keratin was obtained. Based on the results of MALDI-TOF MS, the molecular weight of chloroacetic acid-modified feather keratin was 20.735 kDa, which was higher than that of feather keratin. In the IR spectra of chloroacetic acid-modified feather keratin, the characteristic absorption peaks at  $1643\text{ cm}^{-1}$  (C=O) and  $1527\text{ cm}^{-1}$  (N-H) were shifted compared to feather keratin. At the same time, the absorption intensity of C=O was increased. That meant that the ingredients were inserted into the keratin chain. The mode of combining the extracted keratin with the ingredients is suggested in Fig. 3c and 3d. The obtained reversible water-soluble derivatives may be applied in the areas of controlled drug delivery systems.

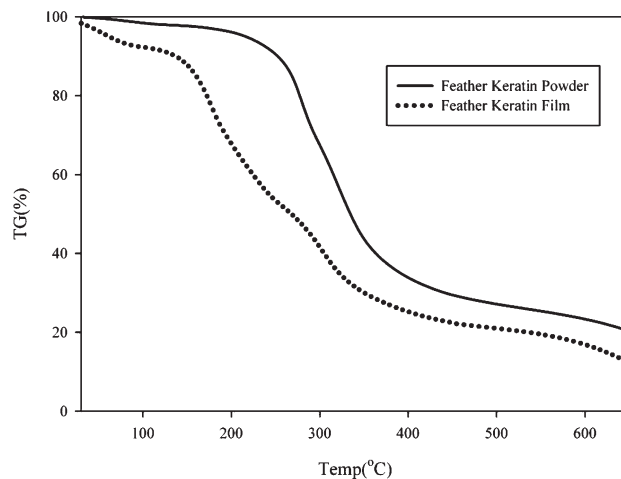
### Characterization of keratin films

**Mechanical properties of keratin films.** Film thickness was measured with a micrometer with a sensitivity of 0.001 mm. Five to ten thickness measurements were carried out for each film, from which an average was obtained. In this study, the

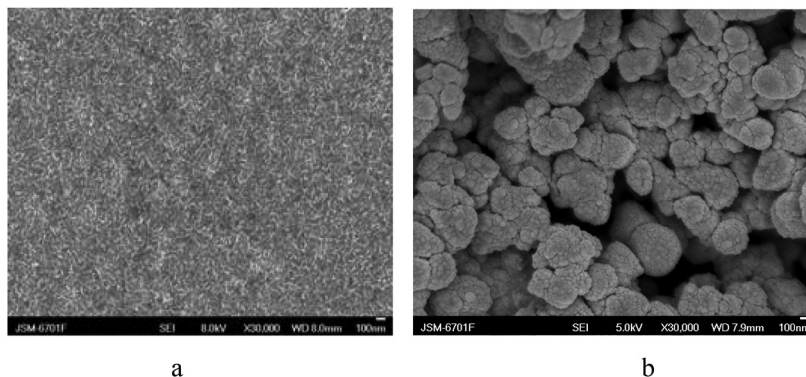
average thickness of the feather keratin films was 0.15–0.25 mm. Although keratin has the ability to form films, the protein films were brittle without the addition of a plasticizing compound. We evaluated the effect of glycerol concentration on the mechanical properties of the films based on feather keratin.<sup>20</sup> When the glycerol content was less than 20 wt% of keratin, the composite film was too fragile to measure its mechanical properties (Table 2). However, the film prepared from keratin mixed with 0.3 g glycerol per g keratin was fairly flexible and strong judged by its ultimate strength (7.56 MPa), ultimate elongation (111.37%) and Young's modulus (27.61 MPa). The addition of 0.5 g glycerol per g keratin decreased the ultimate strength (4.56 MPa) and elongation (103.29%). Similar results were observed with the Young's modulus, which decreased from 27.61 to 10.88 MPa when 0.5 g glycerol per g keratin was added to the films. Thus, glycerol had a positive effect on flexibility. These behaviors agree with other results on the effect of glycerol concentration.<sup>31,32</sup> Compared with the film from human hair (keratin film 70/30, consists of 70% aqueous and 30% alkaline keratin dialysate), the ultimate strength of the human hair film (8 MPa) and *E* modulus (115 MPa)<sup>33</sup> were similar to this films'.

**Table 2** Effect of glycerol concentration (g gly per g keratin) on mechanical properties of feather keratin films

Glycerol conc (g gly per g FK)	Ultimate strength (MPa)	Elongation (%)	Young's modulus (MPa)
0.1	—	—	—
0.2	—	—	—
0.3	7.56	111.37	27.61
0.4	6.64	121.52	14.41
0.5	4.56	103.29	10.88



**Fig. 5** The TG curve of the feather keratin powder and feather keratin film.



**Fig. 4** The micrographs of the chicken feather keratin film (a) and keratin powder (b).

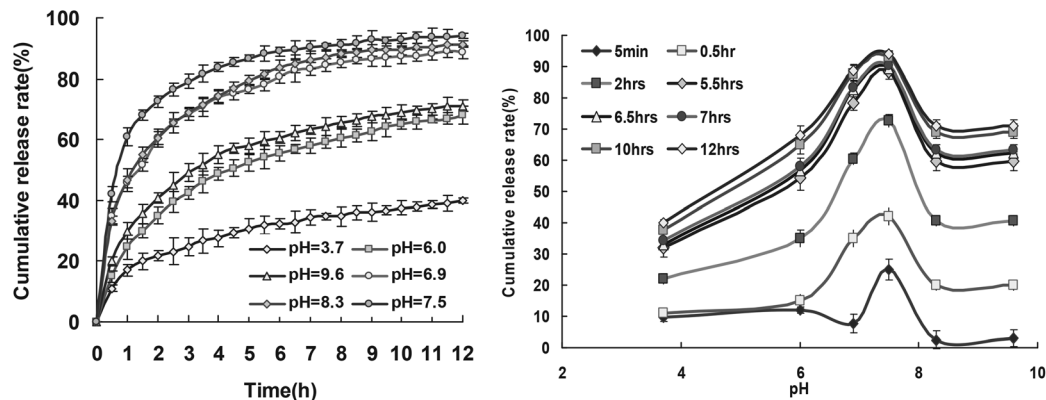


Fig. 6 Release profiles of RB from drug loaded keratin films at 20 °C.

Compared with the polypropylene (tensile strength was 31–41 MPa, the  $E$  modulus, 1100–1500 MPa, and the elongation at break, 100–600%) and chicken feather keratin (CFK) films<sup>32</sup> prepared from partially carboxymethylated feather keratin dispersions with a degree of cysteine modification of 25–50%, 0.30 g of glycerol per g of keratin, and 9.5 wt% water, which the tensile strength at the optimum was 25 MPa, the  $E$  modulus, 350 MPa, and the elongation at break, 50%, the ultimate strength of our films were small, but the elongation was high.

**Scanning electron microscopy (SEM).** Fig. 4 shows the SEM images of the chicken feather keratin film with 0.3 g glycerol per g keratin (Fig. 4a) and keratin powder (Fig. 4b) surfaces. The SEM observation of the keratin film reveals heterogeneous porous microstructures. Some microcracks were also observed in the internal film structure, which can influence its drug delivery property. Fig. 4b reveals that the keratin powder is consisted of spherical, tightly packed nanoparticles and random arranged porous microstructures.

**TGA measurement.** The TG curves of the feather keratin powder and feather keratin film are shown in Fig. 5. Feather keratin powder was quickly decomposed from 250 °C to 350 °C, and the total weight loss was about 83%. However, the feather keratin film was decomposed early and fast. The absorbed water was decomposed below 130 °C. From 150 °C to 350 °C, it was quickly decomposed. We considered that the glycerol in the films could prompt the decomposition of the keratin chain. It indicated that the feather keratin powder was more stable than the feather keratin film.

**Controllable behavior for the drug-release rates.** In order to investigate the controllable behavior of the feather keratin film for drug-release rates, rhodamine B (RB) was loaded into the keratin films. Fig. 6 shows the release profiles of RB from the drug-loaded keratin films. The percentage of drug release was calculated based on the initial drug amount in the drug-loaded keratin films. An initial burst release followed by a slow release of RB occurred. Moreover, these films provided a continuous release of loaded RB for up to 12 h. The release behavior of drug-loaded keratin films at different pH values were investigated. At pH 7.5, the RB release rate was relatively fast

and about 94% of the loaded RB was released from the drug-loaded keratin films within 12 h. The release rates were reduced significantly in an acid environment. The RB release rates were very slow at pH values of 3.6, and only 40% of the loaded RB was released within 12 h. Based on the above results, it is suggested that pH values which are too high or too low will increase the release rate of the films, and the films will benefit from storage.

## Conclusion

In summary, keratin films with porosity possessed excellent controlled release properties. Firstly, the high pure keratin had been extracted and feather keratin was stable and homogeneous. The yield of keratin from the feathers was 93%, the molecular weight of the feather keratin was 20 kDa with low dispersity, and included 14–15% cysteine residues. Secondly, the films based on the extracted keratin were easily prepared. They showed good mechanical properties. Furthermore, the feather keratin films were used to load drugs. The pH-sensitivity and biocompatible skeleton will surely make the resultant film an attractive candidate for application in the biomedical field. We achieved a simple method to reutilize disused feathers. Meanwhile, a new kind of raw material which could be used as cosmetic, iatrical and official materials, and biodegradable materials was obtained.

## Acknowledgements

The authors thank Dr Shaoxiang Xiong, Professor of the Institute of Chemistry, Chinese Academy of Sciences, Beijing, China, for MALDI-TOF MS analysis. We also thank Professor Ming Lin of the Health Science Center in Peking University for their help in the amino acid analysis. The project was supported by the NSFC (no. 21263024, 21244003), PCSIRT (IRT1177), the Gansu Sci & Techn Support Project (1011GKCA017), and Funda Res Funds Gansu Univ (2010-176).



## References

- 1 Y. Lu and S. C. Chen, *Adv. Drug Delivery Rev.*, 2004, **56**, 1621.
- 2 V. Jogani, K. Jinturkar, T. Vyas and A. Misra, *Recent Pat. Drug Delivery Formulation*, 2008, **2**, 25.
- 3 A. S. Hoffman, *Adv. Drug Delivery Rev.*, 2002, **54**, 3.
- 4 Q. Lu, S. J. Zhang, K. Hu, Q. L. Feng, C. B. Cao and F. Z. Cui, *Biomaterials*, 2007, **28**, 2306.
- 5 A. J. Poole, J. S. Church and M. G. Huson, *Biomacromolecules*, 2009, **10**, 1.
- 6 S. Balaji, R. Kumar, R. Sripriya, P. Kakkar, D. Vijaya Ramesh, P. Neela Kanta Reddy and P. K. Sehgal, *Mater. Sci. Eng., C*, 2012, **32**, 975.
- 7 A. A. Onifade, N. A. Al-Sane, A. A. Al-Musallam and S. Al-Zarban, *Bioresour. Technol.*, 1998, **66**, 1.
- 8 Y.-X. Wang and X.-J. Cao, *Process Biochem.*, 2012, **47**, 896.
- 9 H. H. Bragulla and D. G. Homberger, *J. Anat.*, 2009, **214**, 516.
- 10 Y. Nagai and T. Nishikawa, *Agric. Biol. Chem.*, 1970, **34**, 16.
- 11 P. G. Dalev, *Bioresour. Technol.*, 1994, **48**, 265.
- 12 Y. Nagai and T. Nishikawa, *Agric. Biol. Chem.*, 1970, **34**, 575.
- 13 B. S. Harrap and E. F. Woods, *Biochem. J.*, 1964, **92**, 81.
- 14 A. Nakamura, M. Arimoto, K. Takeuchi and T. Fujii, *Biol. Pharm. Bull.*, 2002, **25**, 569.
- 15 E. Wenk, H. P. Merkle and L. Meinel, *J. Controlled Release*, 2011, **150**, 128.
- 16 R. Endo, K. Kamei, I. Iida and Y. Kawahara, *J. Archaeol. Sci.*, 2008, **35**, 1240.
- 17 P. M. M. Schrooyen, P. J. Dijkstra, R. C. Oberthur, A. Bantjes and J. Feijen, *J. Agric. Food Chem.*, 2000, **48**, 4326.
- 18 P. M. M. Schrooyen, P. J. Dijkstra, R. C. Oberthur, A. Bantjes and J. Feijen, *J. Colloid Interf. Sci.*, 2001, **240**, 30.
- 19 G. R. P. Moore, S. M. Martelli, C. Gandolfo, P. J. A. Sobral and J. B. Laurindo, *Food Hydrocolloids*, 2006, **20**, 975.
- 20 K. H. Dahl and J. S. McKinley-McKee, *Bioorg. Chem.*, 1981, **10**, 329.
- 21 N. H. Leon, *Textile Progress*, 1975, **7**, 1.
- 22 A. Vasconcelos, G. Freddi and A. Cavaco-Paulo, *Biomacromolecules*, 2008, **9**, 1299.
- 23 E. Wojciechowska, A. Wlochowicz and A. Weselucha-Birczynska, *J. Mol. Struct.*, 1999, **511–512**, 307.
- 24 N. V. Bhat and S. M. Ahirrao, *J. Polym. Sci., Polym. Chem. Ed.*, 1983, **21**, 1273.
- 25 S. W. Ha, A. E. Tonelli and S. M. Hudson, *Biomacromolecules*, 2005, **6**, 1722.
- 26 M. Tsukada, Y. Gotoh, M. Nagura, N. Minoura, N. Kasai and G. Freddi, *J. Polym. Sci., Part B: Polym. Phys.*, 1994, **32**, 961.
- 27 N. Greenfield and G. D. Fasman, *Biochemistry*, 1969, **8**, 4108.
- 28 K. Arai, T. Hirata, S. Nishimura, M. Hirano and S. Naito, *J. Appl. Polym. Sci.*, 1993, **47**, 1973.
- 29 K. Akahane, S. Murozono and K. Murayama, *J. Biochem.*, 1977, **81**, 11.
- 30 K. M. Arai, R. Takahashi, Y. Yokote and K. Akahane, *Eur. J. Biochem.*, 1983, **132**, 501.
- 31 T. Tanabe, N. Okitsu, A. Tachibana and K. Yamauchi, *Biomaterials*, 2002, **23**, 817.
- 32 P. M. M. Schrooyen, P. J. Dijkstra, R. C. Oberthur, A. Bantjes and J. Feijen, *J. Agric. Food Chem.*, 2001, **49**, 221.
- 33 S. Reichl, M. Borrelli and G. Geerling, *Biomaterials*, 2011, **32**, 3375.