


 Cite this: *RSC Adv.*, 2021, 11, 5218

# High energy density electrolytes for H<sub>2</sub>/Br<sub>2</sub> redox flow batteries, their polybromide composition and influence on battery cycling limits†

 Michael Küttinger,<sup>id</sup>\*<sup>a</sup> Jakub K. Włodarczyk,<sup>id</sup><sup>b</sup> Daniela Daubner,<sup>id</sup><sup>a</sup> Peter Fischer<sup>a</sup> and Jens Tübke<sup>a</sup>

Hydrogen–bromine redox flow batteries (H<sub>2</sub>/Br<sub>2</sub>-RFB) are a promising stationary energy storage solution, offering energy storage densities up to 200 W h L<sup>-1</sup>. In this study, high energy density electrolytes of concentrated hydrobromic acid of up to 7.7 M are investigated. Particular polybromide ion (Br<sub>2n+1</sub><sup>-</sup>; n = 1–3) concentrations in the electrolyte at different states of charge, their effect on the electrolytic conductivity and cell operation limits are investigated for the first time. The concentrations of individual polybromides in the electrolytes are determined by Raman spectroscopy. Tribromide (Br<sub>3</sub><sup>-</sup>) and pentabromide (Br<sub>5</sub><sup>-</sup>) are predominantly present in equal concentrations over the entire concentration range. Besides Br<sub>3</sub><sup>-</sup> and Br<sub>5</sub><sup>-</sup>, heptabromide (Br<sub>7</sub><sup>-</sup>) exists in the electrolyte solution at higher bromine concentrations. It is shown that polybromide equilibria and their constants of Br<sub>3</sub><sup>-</sup> and Br<sub>5</sub><sup>-</sup> from literature are not applicable for highly concentrated solutions. The conductivity of the electrolytes depends primarily on the high proton concentration. The presence of higher polybromides leads to lower conductivities. The solubility of bromine increases disproportionately with increasing bromide concentration, since higher polybromides such as Br<sub>7</sub><sup>-</sup> or Br<sub>5</sub><sup>-</sup> are preferably formed with increasing bromide concentration. Cycling experiments on electrolyte in a single cell are performed and combined with limitations due to electrolyte conductivity and bromine solubility. Based on these results concentrations of the electrolyte are defined for potential operation in a H<sub>2</sub>/Br<sub>2</sub>-RFB in the range 1.0 M < c(HBr) < 7.7 M and c(Br<sub>2</sub>) < 3.35 M, leading to a theoretical energy density of 196 W h L<sup>-1</sup>.

 Received 21st December 2020  
 Accepted 14th January 2021

DOI: 10.1039/d0ra10721b

[rsc.li/rsc-advances](http://rsc.li/rsc-advances)

## Introduction

The Br<sub>2</sub>/Br<sup>-</sup> redox couple in aqueous solution is one of the most energy dense electrolytes in the positive half cell (Fig. 1) of redox flow batteries. The high energy density has been exploited in flow batteries like zinc–bromine RFB, sulphur–bromine RFB or hydrogen–bromine RFB (H<sub>2</sub>/Br<sub>2</sub>-RFB).<sup>1–3</sup> The redox reaction in aqueous electrolyte in general converts two electrons per mole Br<sub>2</sub> (eqn (1)):<sup>4–6</sup>



In this work, general composition and properties of high energy density electrolytes (theoretical 180 A h L<sup>-1</sup>/196 W h L<sup>-1</sup>) for H<sub>2</sub>/Br<sub>2</sub>-RFB are investigated in detail and the limits of their

application in cell are provided by detailed analysis of polybromide equilibria and composition.

## State of the art

H<sub>2</sub>/Br<sub>2</sub>-RFB (Fig. 1) provide fast electrode kinetics in the negative hydrogen half cell and the positive bromine half cell and thus high power densities and energy efficiencies.<sup>7</sup> High peak power densities of 1.4 W cm<sup>-2</sup> and a voltage efficiency of 91% at

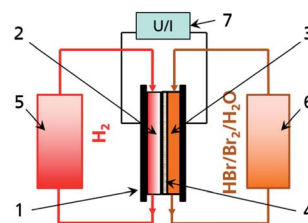


Fig. 1 Principle of a H<sub>2</sub>/Br<sub>2</sub> redox flow battery with (1) energy converter including (2) H<sub>2</sub> negative half cell, (3) Br<sub>2</sub>/Br<sup>-</sup> positive half cell and (4) membrane in the middle and media storage tanks for (5) H<sub>2</sub> and (6) HBr/Br<sub>2</sub>/H<sub>2</sub>O electrolyte on left and right side and (7) grid connection.

<sup>a</sup>Department of Applied Electrochemistry, Fraunhofer Institute for Chemical Technology ICT, Joseph-von-Fraunhofer-Straße 7, 76327 Pfanztal, Germany. E-mail: michael.kuettinger@gmx.de

<sup>b</sup>Institute of Computational Physics (ICP), Zurich University of Applied Sciences (ZHAW), Wildbachstrasse 21, 8400 Winterthur, Switzerland

† Electronic supplementary information (ESI) available. See DOI: 10.1039/d0ra10721b



400 mW cm<sup>-2</sup> were achieved in the past.<sup>8</sup> Main research activities are the investigation of performant separators allowing for the limitation of hydrobromic acid (HBr), bromine (Br<sub>2</sub>) and polybromides crossover<sup>8–12</sup> as well as the development of resistant catalyst materials.<sup>13–15</sup> The H<sub>2</sub>/Br<sub>2</sub>-RFB storage technology is thereby progressing from prototype testing to commercialisation.<sup>14,15</sup> For example, Enstorage demonstrated a 150 kW/900 kW h H<sub>2</sub>/Br<sub>2</sub>-RFB system<sup>15</sup> and Elestor BV deployed field test systems.<sup>16</sup> A recently published study predicts costs of \$0.034 kW h<sup>-1</sup> to \$0.074 kW h<sup>-1</sup> for large-scale 500 kW/5 MW h H<sub>2</sub>/Br<sub>2</sub>-RFB storage, and confirms competitiveness to fossil fuel energy generators and lithium based batteries.<sup>16</sup> In H<sub>2</sub>/Br<sub>2</sub>-RFB studies, different electrolyte concentrations have been used in the past. Usually concentrations of bromine are below 2 M and concentration changes of HBr during operation are mainly below 4 M.<sup>8,9,11,16,17</sup> Only capacities up to approximately 110 A h L<sup>-1</sup> are utilised, although higher storage capacities are feasible with the electrolyte.

Aqueous HBr exhibits a high conductivity due to a high degree of dissociation.<sup>18,19</sup> High concentrations of reactants lead to low mass transport limitation at high current densities. The maximum energy density of electrolytes is defined by the availability of high concentrated HBr. Commercially and industrially two types of HBr solutions of technical purity are available: HBr 48 wt% and HBr 62 wt% (Table 1). These high energy electrolytes exhibit theoretical volumetric capacities > 200 A h L<sup>-1</sup> (Table 1). For the application in a battery, a dilution to 7.7 M HBr is more practical as it allows the mixture of HBr 48 wt% with further additives.

Bromine itself exhibits a limited solubility in pure water at around 0.214 mol L<sup>-1</sup> at  $\theta = 25$  °C.<sup>20–22</sup> The hydrolysis reaction of Br<sub>2</sub> (ref. 23–26) is suppressed in HBr for concentrations of 0.001 M or higher.<sup>27–31</sup> Solubility of Br<sub>2</sub> increases significantly in aqueous bromide solutions like hydrobromic acid. Soluble polybromide complexes (eqn (2) and (3)), such as tribromide (Br<sub>3</sub><sup>-</sup>) or pentabromide ions (Br<sub>5</sub><sup>-</sup>)<sup>20,28,29</sup> are formed in an equilibrium reaction between Br<sub>2</sub>, bromide and the respective polybromide:



These are addition compounds between individual bromine molecules and the bromide ion.<sup>32</sup> The formation of polybromides is advantageous, as high concentrations of HBr and

Br<sub>2</sub> can be combined. The equilibrium constants of the polybromide formation ( $K_n$ ) are determined according to the law of mass action, shown in eqn (4) and (5).<sup>20,26–31,33–35</sup>

$$K_3 = \frac{c_{\text{Br}_3^-}}{c_{\text{Br}^-} c_{\text{Br}_2}} [K_3] = \text{L mol}^{-1} \quad (4)$$

$$K_5 = \frac{c_{\text{Br}_5^-}}{c_{\text{Br}^-} (c_{\text{Br}_2})^2} [K_5] = \text{L}^2 \text{ mol}^{-2} \quad (5)$$

Values for  $K_3$  between 16.0 and 18.08 L mol<sup>-1</sup> at 25 °C are known in literature.<sup>20,26–31,33–35</sup> For  $K_5$ , values between 19.45 L<sup>2</sup> mol<sup>-2</sup> and 40 L<sup>2</sup> mol<sup>-2</sup> are reported in literature.<sup>20,29,31,33–35</sup> Both equilibria are shifted to the polybromide side and reduce free uncomplexed Br<sub>2</sub> in the electrolyte.

In previous studies on polybromide equilibria, concentrations of bromide  $c(\text{HBr}) < 1.0$  M were selected, while Br<sub>2</sub> concentrations as low as  $c(\text{Br}_2) < 240$  mM were investigated.<sup>20,26–31,33,34,37</sup> Furthermore, an experimental separation between Br<sub>3</sub><sup>-</sup> and Br<sub>5</sub><sup>-</sup> was only based on assumptions.<sup>20</sup> An application of the known equilibria and their constants for the range of application of a bromine electrolyte up to  $c(\text{HBr}) = 7.7$  M and  $c(\text{Br}_2) = 3.35$  M has not been investigated so far and seems to be doubtful, however, these are often adopted in studies on H<sub>2</sub>/Br<sub>2</sub>-RFB or Zn/Br<sub>2</sub>-RFB.<sup>6,10,15,36,38–40</sup> Polybromides show Raman peaks in the range of the Raman shift<sup>41–43</sup> between  $\tilde{\nu} = 125$  cm<sup>-1</sup> and 325 cm<sup>-1</sup>. Raman peaks of symmetric and antisymmetric stretching vibrations of Br<sub>3</sub><sup>-</sup> and Br<sub>5</sub><sup>-</sup> as well as the symmetric stretching vibration of heptabromide (Br<sub>7</sub><sup>-</sup>) at known Raman shifts<sup>32,41–43</sup> can be considered and related to Br<sub>2</sub> distribution and polybromide concentration. Although Raman data are accessible, no investigations on polybromide equilibria and electrolyte composition of highly concentrated acidic bromine electrolytes have been published so far. Neither the actual polybromide mixture nor its effect on relevant cell parameters are extensively investigated in the literature.

### Work plan

The limits of the applicability of 7.7 M HBr electrolytes in a H<sub>2</sub>/Br<sub>2</sub> RFB single cell are shown in this work focusing on parameters like Br<sub>2</sub> solubility and electrolyte conductivities. Operating conditions with the highly concentrated HBr/Br<sub>2</sub> electrolytes are defined by introduction of a state of charge definition. Therefore, a new but comprehensive method for the determination of polybromide concentrations based on Raman spectroscopy for

**Table 1** Comparison of different commercial HBr electrolytes regarding their theoretical charge capacity and energy density

	Availability of technical electrolytes	
Mass concentration in wt%	HBr 62 wt%	HBr 48 wt%
Molar concentration $c(\text{HBr})/\text{mol L}^{-1}$	13.54 <sup>a</sup>	8.84 <sup>a</sup>
Theoretical charge capacity/A h L <sup>-1</sup>	362	237
Theoretical possible energy density <sup>b</sup> /W h L <sup>-1</sup>	395	258

<sup>a</sup> Calculated using product data of data sheets: density of solution, mass ratio of HBr and molar mass of HBr. <sup>b</sup> Calculated with respect to the thermodynamic open circuit potential for the redox couple Br<sub>2</sub>/Br<sup>-</sup> of 1.09 V (ref. 4, 19, 31 and 36) and based on Faraday law with a coulombic efficiency of 100%.



high concentrated polybromide electrolytes is presented. The existence of different polybromides in these samples is analysed, their concentrations are determined and their influence on the conductivity and application limits for highly concentrated HBr/Br<sub>2</sub> electrolyte in a H<sub>2</sub>/Br<sub>2</sub>-RFB is investigated. Measured results on polybromide concentrations are compared with simulations based on literature values of the polybromide equilibrium constants of Br<sub>3</sub><sup>-</sup> and Br<sub>5</sub><sup>-</sup>. The validity of the known equilibria is discussed.

## Experimental and methods

All experiments, setups, methods, suppliers and manufacturer data, and evaluation tools are presented in detail in the ESI.† Here, an overview of the methods is given.

### Chemicals and electrolyte preparation

Analysed electrolytes are composed of distilled water, hydrobromic acid HBr 48 wt% and bromine Br<sub>2</sub>. For this electrolyte investigation, an aqueous 7.7 M HBr solution is the initial electrolyte solution used, while also lower concentrations down to 0 M HBr are applied. This range is evaluated with 24 samples, with concentration changes in steps of  $\Delta c(\text{HBr}) = -0.335 \text{ M}$  and  $\Delta c(\text{Br}_2) = 0.167 \text{ M}$  per sample. The correlation between  $\Delta c(\text{HBr})$  and  $\Delta c(\text{Br}_2)$  is stoichiometric and represented by eqn (1). The composition of all samples is given in Table 2. Each sample is used for the investigation of (i) electrolytic conductivity of the solution, (ii) detection of a possible miscibility gap of the solution and (iii) Raman investigations for polybromide detection as a basis for the calculation of polybromide concentrations. In addition, 24 samples with the same HBr concentrations, but without Br<sub>2</sub>, are mixed in order to investigate reference conductivities of pure HBr/H<sub>2</sub>O electrolytes. For a cell cycling test, a volume of 60 mL of  $c(\text{HBr}) = 7.7 \text{ M}$  HBr in H<sub>2</sub>O is prepared.

### Cell cycling test

A cell test is performed on a setup developed at Fraunhofer ICT. As membrane electrolyte assembly (MEA) a Nafion 117 membrane with single sided Pt/C catalyst for the hydrogen half cell is used. The gas diffusion electrode of the negative half cell

consists of a gas diffusion layer (GDL) and a current collector with a milled meander structure. During the whole test the hydrogen half cell is fed with hydrogen externally and the hydrogen produced during the charging process is not stored. In the bromine half cell the electrode consists of a graphite felt, embedded in a frame, which is closed by a glassy carbon (GC) current collector. The cell is charged and discharged while a flow rate of 20 mL min<sup>-1</sup> of electrolyte and different current densities of  $\pm 50 \text{ mA cm}^{-2}$ ,  $\pm 100 \text{ mA cm}^{-2}$ ,  $\pm 150 \text{ mA cm}^{-2}$ ,  $\pm 200 \text{ mA cm}^{-2}$  and  $\pm 250 \text{ mA cm}^{-2}$  are applied. Voltage ( $E$ ) thresholds of the experiments are between  $E_{\text{max}} = 1.5 \text{ V}$  and  $E_{\text{min}} = 0.25 \text{ V}$ . Cell voltage  $E_{\text{Cell } i \neq 0}$  under load, the redox potential  $\phi(\text{Br}_2/\text{Br}^-)_{\text{redox}}$  versus a normal hydrogen electrode (NHE) and half cell potentials of the positive bromine half cell  $\phi(\text{Br}_2/\text{Br}^-)_{i \neq 0}$  vs. NHE and of the negative hydrogen half cell  $\phi(\text{H}^+/\text{H}_2)_{i \neq 0}$  vs. NHE are determined in parallel during cycling experiments, as depicted in Fig. 2. A so-called “residual potential”  $\Delta E_{\text{Res}}$  is calculated from these values as shown in eqn (6):

$$\Delta E_{\text{Res}} = E_{\text{Cell } i \neq 0} - (\phi(\text{Br}_2/\text{Br}^-)_{i \neq 0} - \phi(\text{H}^+/\text{H}_2)_{i \neq 0}) \quad (6)$$

It essentially reproduces the overvoltages between the negative and positive half cell, and represents the sum of electrolyte resistance and membrane resistance.



Fig. 2 Experimental setup of the cell test of the investigated H<sub>2</sub>/Br<sub>2</sub>-RFB single cell including the possibility to measure voltages and potential differences: cell voltage during operation  $E_{\text{Cell } i \neq 0}$ , potential of the positive half cell  $\phi(\text{Br}_2/\text{Br}^-)_{i \neq 0}$  vs. RE, potential of the negative half cell  $\phi(\text{H}^+/\text{H}_2)_{i \neq 0}$  vs. a dynamic hydrogen electrode DHE and the redox potential  $\phi(\text{Br}_2/\text{Br}^-)_{\text{redox}}$  of the electrolyte at glassy carbon vs. RE.

Table 2 Concentrations of HBr and Br<sub>2</sub> in aqueous HBr/Br<sub>2</sub>/H<sub>2</sub>O electrolytes between 7.7 M HBr and 0 M HBr or 3.85 M Br<sub>2</sub> and 0 M Br<sub>2</sub> depending on the sample number. Concentrations show changes in electrolyte composition according to eqn (1). Table covers sample numbers 1 to 24

Sample no.	1	2	3	4	5	6	7	8	9	10	11	12
$c(\text{HBr})/\text{M}$	7.700	7.365	7.030	6.696	6.361	6.026	5.691	5.357	5.022	4.687	4.352	4.017
$c(\text{Br}_2)/\text{M}$	0.000	0.167	0.335	0.502	0.670	0.837	1.004	1.172	1.339	1.507	1.674	1.841
Sample no.	13	14	15	16	17	18	19	20	21	22	23	24
$c(\text{HBr})/\text{M}$	3.683	3.348	3.013	2.678	2.343	2.009	1.674	1.339	1.004	0.670	0.335	0.000
$c(\text{Br}_2)/\text{M}$	2.009	2.176	2.343	2.511	2.678	2.846	3.013	3.180	3.348	3.515	3.683	3.850



## Investigation of the miscibility

The prepared 24 HBr/Br<sub>2</sub>/H<sub>2</sub>O electrolyte samples are examined by visual inspection at  $\theta = 23\text{ }^{\circ}\text{C}$  for any phase separation of the aqueous phase and a further phase.

## Conductivity of electrolyte solutions

Electrolytic conductivities of electrolytes with HBr/Br<sub>2</sub>/H<sub>2</sub>O (24 samples) and electrolytes without Br<sub>2</sub> in solution (24 samples), with their mixtures shown in Table 2 are examined at  $\theta = 23\text{ }^{\circ}\text{C}$  using a conductivity cell. Conductivities of the electrolytes are calculated from ohmic electrolyte resistances measured by helps of impedance spectroscopy. The cell constant of the conductivity cell is determined using 1 M KCl solution with a conductivity of  $103.9\text{ mS cm}^{-1}$  at  $\theta = 23\text{ }^{\circ}\text{C}$ .<sup>19</sup>

## Solubility of Br<sub>2</sub> in aqueous HBr solutions

A solubility curve of bromine in HBr solutions is determined by preparing aqueous HBr solutions of different concentrations  $c(\text{HBr})$  between 0 M HBr and 5 M HBr at  $\theta = 23\text{ }^{\circ}\text{C}$ . Bromine is added dropwise with a pipette. The total mass of bromine is determined gravimetrically. This procedure is continued iteratively until a drop of bromine remains not dissolved in the sample. The addition of bromine increases the volume and mass of the sample solution. In order to determine the actually existing concentrations at saturation of  $c(\text{HBr})_{\text{sat}}$  and  $c(\text{Br}_2)_{\text{sat}}$ , the volume and mass of the samples in the saturated state ( $V_{\text{sat}}$  and  $m_{\text{sat}}$ , respectively) are measured, and concentrations at saturation are calculated.

## Polybromide determination by Raman analysis

By means of Raman spectroscopy on the electrolyte samples, the occurrence of the different polybromides Br<sub>3</sub><sup>-</sup>, Br<sub>5</sub><sup>-</sup>, etc. in the prepared 24 samples of HBr/Br<sub>2</sub>/H<sub>2</sub>O (Table 2) is investigated. Electrolyte samples are pipetted into a quartz glass cuvette, sealed and examined under the microscope. The focal point of the Raman beam is positioned just below the edge of the front glass of the cuvette and the position of the carrier table is fixed to obtain reproducible Raman spectra. Surface areas under the polybromide Raman peaks are determined by an integration method according to Levenspiel–Marquart with the Lorentz model. The symmetric and antisymmetric stretching vibrations of Br<sub>3</sub><sup>-</sup> and Br<sub>5</sub><sup>-</sup> are considered, as well as the symmetric stretching vibration of Br<sub>7</sub><sup>-</sup> at fixed Raman shifts known in literature.<sup>41–43</sup> For the investigation of Br<sub>2</sub> distribution on the different polybromides, the peaks of symmetric stretching of the polybromides are considered. Areas of the symmetric stretch assigned to the peaks of Br<sub>3</sub><sup>-</sup>, Br<sub>5</sub><sup>-</sup>, and Br<sub>7</sub><sup>-</sup> are related to the sum of all areas of symmetric stretches to achieve Br<sub>2</sub> distribution on polybromides  $x(\text{Br}_{2n+1}^-)$ . Polybromide concentrations  $c(\text{Br}_{2n+1}^-)$  are calculated by expecting approximately all bromine  $c(\text{Br}_2)_{\text{T}}$  available in polybromides with the proportion  $x(\text{Br}_{2n+1}^-)$  following eqn (7):

$$c(\text{Br}_{2n+1}^-) = \frac{c(\text{Br}_2)_{\text{T}} \cdot x(\text{Br}_{2n+1}^-)}{n} \quad \text{with } n = 1, 2 \text{ or } 3 \quad (7)$$

## Simulation of the electrolyte composition

To investigate the validity of polybromide equilibria and equilibrium constants from literature at high reactant concentrations, concentrations of polybromides, HBr and Br<sub>2</sub> in equilibrium are simulated. To determine total concentrations of Br<sub>2</sub>  $c(\text{Br}_2)_{\text{T}}$ , the stoichiometric relationship from eqn (1), including the total HBr concentration  $c(\text{HBr})_{\text{T}}$  and the initial concentration  $c(\text{HBr})_0 = 7.7\text{ M}$ , is used. The concentrations of polybromides  $c(\text{Br}_3^-)_{\text{eq}}$ ,  $c(\text{Br}_5^-)_{\text{eq}}$ , bromine  $c(\text{Br}_2)_{\text{eq}}$ , and HBr  $c(\text{HBr})_{\text{eq}}$  in equilibrium are calculated using eqn (4) and (5) with  $K_3 = 16\text{ L mol}^{-1}$  and  $K_5 = 37\text{ L}^2\text{ mol}^{-2}$  for each case iteratively including the bromide mass balance eqn (8).

$$c(\text{HBr})_{\text{eq}} = c(\text{HBr})_{\text{T}} - c(\text{Br}_3^-)_{\text{eq}} - c(\text{Br}_5^-)_{\text{eq}} \quad (8)$$

The operating points are defined by the state of charge (SOC) of the electrolyte. The SOC range will be defined in chapter “Definition of the operating range for HBr/Br<sub>2</sub> electrolytes”. Concentrations are plotted as a function of SOC in chapters “Theoretical concentrations and polybromide equilibria” and “Polybromide distribution and polybromide concentration verification of polybromide equilibria”.

## Results and discussion

### Cell cycling test

First, the presented electrolyte is examined in a charge–discharge cell test in a single cell in order to investigate performance characteristics. Voltage and potential curves are qualitatively examined for determining limiting conditions. Cell voltage, half cell potentials and redox potential are shown in Fig. 3a for 2 cycles at a constant charge and discharge current of  $\pm 250\text{ mA cm}^{-2}$ . A complete charge and discharge of the whole HBr concentration of 7.7 M could not be reached for  $\pm 250\text{ mA cm}^{-2}$ . Average values of the HBr concentrations after charging and discharging (Fig. 3b) show that a complete charge of 7.7 M HBr to 3.85 M Br<sub>2</sub> is not achieved. With increasing current density, the useable amount of  $\Delta c(\text{HBr})$  decreases (Fig. 3b). For  $i > 150\text{ mA cm}^{-2}$  there are still  $c(\text{HBr}) > 2\text{ M}$  in the solution (Fig. 3b) after charge, while concentrations of HBr after discharge depend less on the current density. Shortly before the end of the two charge cycles the cell voltage rises sharply (Fig. 3a) and at the end of the charging process, individual dark brown drops flow from positive bromine half cell back into the tank. It is believed that a separate Br<sub>2</sub> phase is formed in the positive half cell and does not get complexed by HBr. The half cell potential of the positive Br<sub>2</sub>/Br<sup>-</sup> half cell remains constant and does not follow the cell voltage. Instead, it remains at a constant difference from the redox potential. Also, the potential of the negative hydrogen half cell stays constant. As a result of the behaviour of the potentials, mass transport limitation by  $c(\text{HBr})$  in the positive or negative half cell at the end of the charge process is not present. The introduced residual potential  $\Delta E_{\text{Res}}$ , which primarily indicates ohmic resistances in the cell, also increases sharply in this area. It is assumed that low conductive bromine is partially accumulated on the surface of the electrode felt and in front of the membrane.

At the end of the discharge process in both cycles the limiting process is the mass transport limitation of bromine in





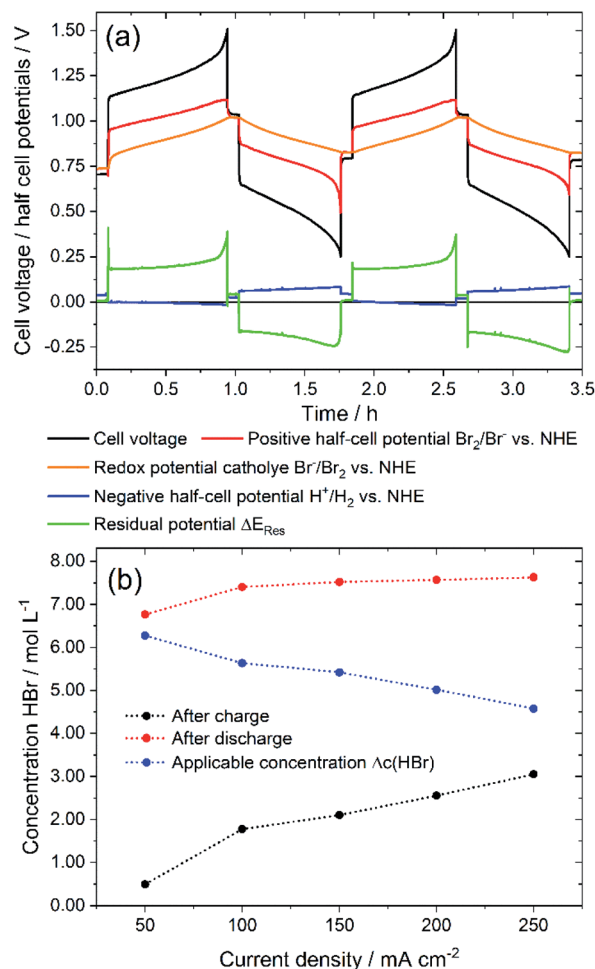


Fig. 3 (a) Cell voltage and potentials of a galvanostatic cycling test of a 40 cm<sup>2</sup> H<sub>2</sub>/Br<sub>2</sub>-RFB single cell with  $i = \pm 250$  mA cm<sup>-2</sup> depending on operation time: black – cell voltage; red – positive bromine half cell potential, orange – bromine–electrolyte redox potential, blue – negative hydrogen half cell potential, green – residual potential  $\Delta E_{\text{Res}}$  according to eqn (6) and (b) maximum charge and discharge concentration of HBr in electrolyte after charge and discharge and applied HBr concentration  $\Delta c(\text{HBr})$  depending on chosen current density.

the felt electrode (Fig. 3a). The bromine concentration decreases during the discharge process and would theoretically be 0 M Br<sub>2</sub> at SOC = 0%. After discharge  $c(\text{HBr})$  reaches values of 7.45 M up to 7.62 M HBr, which is close to the original concentration of 7.7 M HBr. For all current densities similar effects are recognized.

The main limiting factor for cell performance seems to be the formation of pure Br<sub>2</sub> leading to higher overvoltage and reducing the electrolyte capacity. The solubility of bromine and the conductivity of the aqueous electrolyte is considered further.

### Electrolyte mixtures and miscibility gap

Based on the observation of dark drops emerging from the positive half cell at the end of the charge process, the miscibility

of Br<sub>2</sub> with HBr solutions is investigated *ex situ* for the theoretical concentrations existing in the cell (Fig. 4). The prepared 24 electrolyte samples represent the entire concentration range (Table 2). They show a colour variation due to an increasing bromine concentration from a transparent 7.7 M HBr sample to a deep brown sample at approximately  $c(\text{HBr}) = 1.67$  M and  $c(\text{Br}_2) = 3.01$  M (Fig. 4).

For values  $c(\text{HBr}) \leq 1.67$  M and  $c(\text{Br}_2) \geq 3.01$  M a separation of the aqueous electrolyte into two liquid phases is visible. The brown colour intensity of the bromine in the aqueous solution decreases, which indicates a decreasing bromine concentration and is shown in Fig. 4 (right side). The second heavy phase is Br<sub>2</sub>. Samples of the heavy phase are examined by Raman spectroscopy. The characteristic Raman shift is known in literature as a signal for pure bromine.<sup>32,41,44,45</sup> The samples show a single sharp peak at a Raman shift of  $\tilde{\nu} = 311$  cm<sup>-1</sup> (Fig. S2, ESI†). In the range between  $\tilde{\nu} = 1600$  cm<sup>-1</sup> and  $\tilde{\nu} = 3000$ – $3700$  cm<sup>-1</sup> no further peaks are determined, which would characterise the existence of water. That implies the second liquid phase to be anhydrous, pure bromine Br<sub>2</sub>. If the bromide concentration in the aqueous phase decrease, while the bromine concentration increases, fewer bromide ions are available to form polybromides. Br<sub>2</sub> is no longer soluble in the aqueous phase and forms a non-miscible second phase consisting of pure Br<sub>2</sub>.

In the bromine half cell of the test cell, performance is limited by the formation of poorly conductive bromine phase even at concentrations of  $c(\text{HBr})$  that are slightly higher than 1.67 M HBr. Elemental Br<sub>2</sub> acts as an insulator with a conductivity of  $9.6 \times 10^{-10}$  S cm<sup>-1</sup> ( $\theta = 0$  °C)<sup>46</sup> and thus reduces electrolyte conductivity operation ranges. A voltage increase in galvanostatic operation is the result. Due to the oxidation reaction in the bromine half cell during charge, higher local bromine amounts are present than in the tank. In the cell test, a formation of elemental Br<sub>2</sub> could be calculated already to be present at +250 mA cm<sup>-2</sup> at concentrations  $c(\text{HBr}) \leq 2.005$  M and  $c(\text{Br}_2) \geq 2.846$  M in the cell. Depending on the current density, however, cell charging down to  $c(\text{HBr}) < 1$  M is possible.

### Solubility curve and empirical representation

To evaluate the exact overlap between the stoichiometrically changing concentration ratios in the H<sub>2</sub>/Br<sub>2</sub>-RFB and the solubility limit, solubility values for Br<sub>2</sub> in HBr solutions are determined and compared to the working curve of the cell according to eqn (9):

$$c(\text{Br}_2)_T = \frac{c(\text{HBr})_0}{2} \left( 1 - \frac{c(\text{HBr})_T}{c(\text{HBr})_0} \right) = 3.85 \text{ M} \left( 1 - \frac{c(\text{HBr})_T}{7.7 \text{ M}} \right) \quad (9)$$

In pure water bromine solubility is 0.22 mol L<sup>-1</sup>, which is approximately in agreement with values from literature.<sup>20–22,47</sup>

The solubility of bromine in HBr rises with higher HBr concentration due to polybromide formation and is depicted in Fig. 5 (black dots). For saturation concentrations at  $c(\text{HBr})_{\text{sat}} < 1.5$  M the bromine concentration increases approximately linearly with the bromide concentration. The solubility of



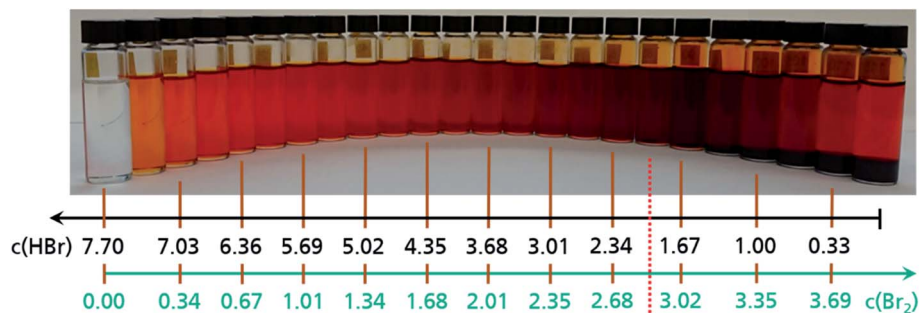


Fig. 4 24 glass vials with different HBr/Br<sub>2</sub> mixtures in aqueous solutions, as used as posolyte in the positive half cell of the H<sub>2</sub>/Br<sub>2</sub>-RFB. Concentration changes can be recognized by the numbered bars. The red dotted line shows the transition between the single-phase aqueous electrolyte (left side) and the two-phase electrolyte system (right side). To the right of the red line for  $c(\text{HBr}) \leq 1.67 \text{ M}$  and  $c(\text{Br}_2) \geq 3.01 \text{ M}$  bromine is partially separated and is present parallel to the aqueous phase.

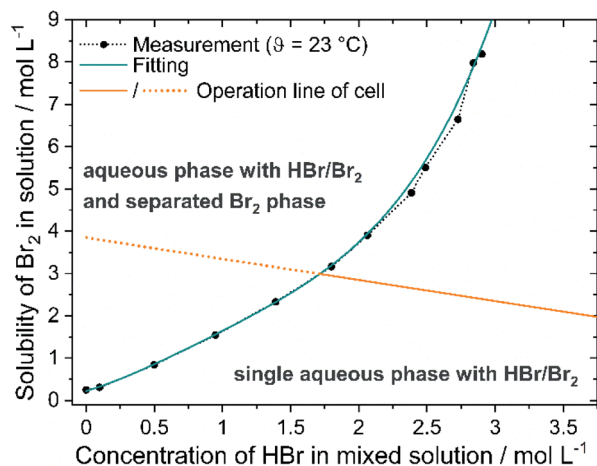


Fig. 5 Solubility of Br<sub>2</sub>  $c(\text{Br}_2)_{\text{sat}}$  in aqueous HBr solutions  $c(\text{HBr})_{\text{sat}}$  as a function of the HBr concentration in the solution (black dots and green fitting line) and superposition with the operation line (orange line) of the H<sub>2</sub>/Br<sub>2</sub>-RFB electrolyte by stoichiometric concentration change.

bromine increases with increasing bromide concentration for  $c(\text{HBr})_{\text{sat}} > 1.5 \text{ M}$ . More bromine molecules per bromide ion can be dissolved. For  $c(\text{HBr}) < 1.5 \text{ M}$ , a ratio  $< 1.54$  between  $c(\text{Br}_2)$  and  $c(\text{HBr})$  is calculated. In this range, bromine is theoretically present at approximately 50% as  $\text{Br}_3^-$  and 50% as  $\text{Br}_5^-$ . For  $c(\text{HBr}) \geq 2.31 \text{ M}$  this ratio between complexed bromine and bromide is  $\geq 2$  and increases with increasing bromide concentration. Theoretically, only  $\text{Br}_5^-$  and  $\text{Br}_7^-$  are present at higher concentrations. Solubility of Br<sub>2</sub> in HBr was investigated before in literature,<sup>48</sup> but based on the initial HBr concentration of the experiment. In the H<sub>2</sub>/Br<sub>2</sub>-RFB, saturated concentrations of HBr are present. In this work, however, the concentrations are corrected for mass and volume change and show the bromine concentration in relation to the HBr concentration in the saturated state. The correction is necessary to obtain the solubility of electrolytes in the cell. In order to describe the solubility of bromine in aqueous solutions of HBr empirically for saturated solutions with  $c(\text{Br}_2)_{\text{sat}}$  and  $c(\text{HBr})_{\text{sat}}$ , a regression is performed using a 4th degree polynomial function:

$$c(\text{Br}_2)_{\text{sat}} = e \cdot c(\text{HBr})_{\text{sat}}^4 + d \cdot c(\text{HBr})_{\text{sat}}^3 + c \cdot c(\text{HBr})_{\text{sat}}^2 + b \cdot c(\text{HBr})_{\text{sat}} + a \quad (10)$$

The constants have the following values:  $a = 0.2206 \text{ mol L}^{-1}$ ,  $b = 0.954$ ,  $c = 0.8807 \text{ L mol}^{-1}$ ,  $d = -0.5831 \text{ L}^2 \text{ mol}^{-2}$  and  $e = 0.1723 \text{ L}^3 \text{ mol}^{-3}$  and are valid at  $\theta = 23 \text{ }^\circ\text{C}$  between  $0 \text{ M} \leq c(\text{HBr})_{\text{sat}} \leq 2.9 \text{ M}$ . The point of intersection between curves representing eqn (9) and (10) is thus the critical point as a solution saturated with bromine is present in the positive half cell depicted by intersection of the green and orange line in Fig. 5: 1.7 M HBr and 3 M Br<sub>2</sub>. For higher concentrations of bromine and lower concentrations of bromide, a second phase is present in the electrolyte mixture and the bromine concentration in the aqueous phase is defined according to eqn (10).

### Conductivity of electrolyte solutions

As high current densities are expected due to fast electrode kinetics<sup>7</sup> and large reaction surfaces in felt electrodes, high electrolyte conductivity throughout the whole operation range is a necessary property of H<sub>2</sub>/Br<sub>2</sub>-RFB electrolytes. Conductivities of pure HBr solutions are known in literature<sup>19,49</sup> and shall be compared with bromine containing electrolytes and their influence on cell operation. Both depicted lines (Fig. 6 – red and orange lines) in the graph represent conductivity values from available literature<sup>19,49</sup> at  $\theta = 20 \text{ }^\circ\text{C}$  and  $25 \text{ }^\circ\text{C}$ . With increasing HBr concentration, the measured electrolytic conductivity of both electrolytes at  $\theta = 23 \text{ }^\circ\text{C}$  increases to peak at a certain HBr concentration and slowly declines at high values. Measured conductivities on pure HBr solutions (Fig. 6 – black dots) as well as on HBr/Br<sub>2</sub> electrolytes (Fig. 6 – green dots) indicate this trend. The measured conductivity of the HBr solutions and the reference curve<sup>49</sup> at  $\theta = 20 \text{ }^\circ\text{C}$  are in general agreement. For solutions including Br<sub>2</sub>, however, the conductivity increases more slowly. Conductivities are smaller for the application of Br<sub>2</sub> in the electrolyte for  $c(\text{HBr}) < 5.69 \text{ M}$  compared to pure HBr/H<sub>2</sub>O electrolyte. For  $c(\text{HBr}) \geq 1 \text{ M}$  (or  $c(\text{Br}_2) \leq 3.35 \text{ M}$ ) in both electrolytes high conductivities of  $\kappa \geq 298 \text{ mS cm}^{-1}$  are relevant for the operation of the electrolytes in the battery. In parallel or  $c(\text{HBr}) < 1 \text{ M}$  or  $c(\text{Br}_2) > 3.35 \text{ M}$  the electrolytic conductivity



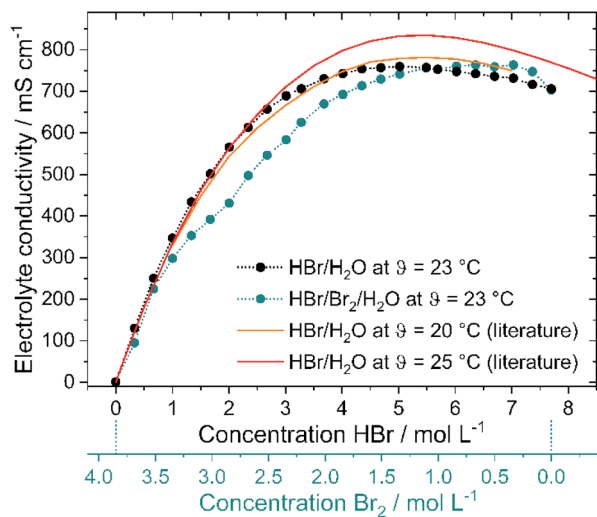


Fig. 6 (a) Electrolyte conductivities as a function of the concentration of HBr  $c(\text{HBr})$  in a pure HBr solution and HBr/Br<sub>2</sub> solution for a bromine half cell. Measurements shown as points and literature values as lines [11,53] and (b) quantitative ratio between water H<sub>2</sub>O and HBr in the investigated electrolyte solutions as a function of the HBr concentration.

decreases sharply to  $c(\text{HBr}) = 0 \text{ M}/c(\text{Br}_2) = 3.85 \text{ M}$  with conductivity close to the one of pure water. In this range the bromine remains predominantly in its own separate phase and has little influence on the conductivity of the aqueous solution.

High conductivities up to  $763.2 \text{ mS cm}^{-1}$  are achieved by the transport of charges by means of the Grotthuss mechanism in acidic aqueous solutions.<sup>50,51</sup> Conductivity peaks of both electrolytes ( $c(\text{HBr}) = 5.02 \text{ M}$ ,  $\kappa = 759.3 \text{ mS cm}^{-1}$  in HBr/H<sub>2</sub>O electrolytes and  $c(\text{HBr}) = 6.36 \text{ M}$ ,  $\kappa = 763.2 \text{ mS cm}^{-1}$ , in HBr/Br<sub>2</sub>/H<sub>2</sub>O electrolytes) depend on the dissociation of HBr. For low HBr concentrations it is assumed that hydrobromic acid with  $\text{p}K_{\text{s}} = -9^{18}$  is completely dissociated. Due to the formation of a solvate shell around the oppositely charged ions, ions are protected to form strong ionic interactions with each other. For higher HBr concentrations in the range of the peaks, the degree of dissociation is limited (70% at  $c(\text{HBr}) = 6.27 \text{ M}$ ).<sup>52</sup> The quantity of water molecules is no longer sufficient in relation to the HBr molecules present to form a solvate shell for all bromide ions and protons. Oppositely charged ions attract each other and cannot move freely in the electric field due to the lack of a solvation shell. The Grotthuss mechanism is inhibited. This state predominates in the peak range and for higher concentrations in bromine-containing electrolytes.

For  $c(\text{HBr}) > 5.69 \text{ M}$  and  $c(\text{Br}_2) < 1 \text{ M}$  ( $752.8 \text{ mS cm}^{-1}$  at  $5.59 \text{ M HBr}$ ) the conductivity of the bromine-containing electrolytes is higher than the conductivity of the bromine-free electrolytes. As different polybromides in low amounts are present in the bromine-containing solution, a regular order of weakly solvated protons and bromide ions in the high concentrated HBr solution is not available anymore. Polybromides have larger hydrodynamic radii, including lower local charge densities. Protons and bromide ions attract each other less strongly. This results in irregularities in the arrangement of

protons and bromide ions. The Grotthuss mechanism can proceed more simply as the required oxonium ions and water molecules are bound less rigidly and in an orderly manner to a fixed place in the solution. However, availability of Br<sub>2</sub> in the range of  $c(\text{HBr}) > 5.69 \text{ M}$  has minor influence on the general high conductivity of those electrolytes.

The influence of polybromides on conductivity is described in the last subchapter whereas the polybromide composition of the electrolytes is discussed in the chapter Raman analysis of the electrolyte samples.

### Definition of the operating range for HBr/Br<sub>2</sub> electrolytes

The definition of the operation range in terms of limiting concentrations is defined by the state of charge range (SOC). It is determined here on the basis of conductivity and the miscibility gap. SOC = 0% refers to the electrolyte mixture of  $7.7 \text{ M HBr}/0 \text{ M Br}_2$  in H<sub>2</sub>O, with a conductivity of  $\kappa = 705.8 \text{ mS cm}^{-1}$ . For SOC = 100% the operation point with  $1 \text{ M HBr}/3.35 \text{ M Br}_2$  in aqueous solution is chosen. Charging the electrolyte below  $c(\text{HBr}) < 1 \text{ M}$  is not convenient due to the sharp drop in electrolytic conductivity  $\kappa < 298.0 \text{ mS cm}^{-1}$ . In addition, from SOC > 89.40%, the working range of the positive bromine half cell is superimposed with the limited solubility of Br<sub>2</sub> in the aqueous electrolyte. Although the formation of bromine in the positive half cell leads to ohmic overvoltage, it strongly depends on the electrode type, as well as on the current density and flow rate. A small overlap of the operation curve and the formation of elemental bromine is acceptable in order to achieve a high usable electrolyte capacity at the same time. The total concentrations of HBr and Br<sub>2</sub> as a function of SOC are given by eqn (11) and (12).

$$c(\text{HBr})_{\text{T}} = 6.7 \text{ M}(1 - \text{SOC}) + 1 \text{ M} \quad (11)$$

$$c(\text{Br}_2)_{\text{T}} = 3.35 \text{ M} \cdot \text{SOC} \quad (12)$$

Concentrations of HBr and Br<sub>2</sub> as a function of SOC are shown in Table S1 (ESI†).

In some of the following diagrams, SOC values of up to 115% are shown. In this range concentration values of  $c(\text{HBr}) < 1 \text{ M}$  HBr are given. SOC = 115% corresponds to  $0 \text{ M HBr}/3.85 \text{ M Br}_2$ . Thus, the entire concentration range between 0 and  $7.7 \text{ M HBr}$  and 0 and  $3.85 \text{ M Br}_2$  is shown. With the definition of SOC, a utilizable concentration  $\Delta c(\text{HBr}) = 6.7 \text{ M}$  is achievable, which corresponds to a capacity of  $179.57 \text{ A h L}^{-1}$  of the liquid electrolyte.

### Theoretical concentrations and polybromide equilibria

Based on the definition of the SOC range the total concentrations of bromine  $c(\text{Br}_2)_{\text{T}}$  and HBr  $c(\text{HBr})_{\text{T}}$  are calculated following eqn (11) and (12) and considering the solubility limitation according to eqn (10). Including polybromide equilibria for Br<sub>3</sub><sup>-</sup> and Br<sub>5</sub><sup>-</sup>, their concentrations at equilibrium are calculated for different SOC's applying polybromide law of mass action eqn (4) and eqn (5). Values of  $K_3 = 16 \text{ L mol}^{-1}$  and  $K_5 = 37 \text{ L}^2 \text{ mol}^{-2}$  are applied for the entire SOC range. Based on these



values also bromine concentration  $c(\text{Br}_2)_{\text{eq}}$  and HBr concentration  $c(\text{HBr})_{\text{eq}}$  at equilibrium are considered. Simulated concentrations are shown in Fig. 7.

Since  $K_3$  and  $K_5 > 1$ , both equilibria shift the reaction to form polybromides. Due to the strong excess of bromide  $\text{Br}^-$  for small SOC and the low concentrations of  $\text{Br}_2$ , almost the complete amount of  $\text{Br}_2$  is converted to  $\text{Br}_3^-$  for SOC < 60% (Fig. 7). While  $c(\text{HBr})_{\text{eq}}$  decreases, and  $c(\text{Br}_2)_T$  increases in total, more  $\text{Br}_5^-$  is formed. A maximum peak for  $c(\text{Br}_3^-)$  at SOC = 65.51% and a peak for  $\text{Br}_5^-$  at SOC = 89.4% appear during SOC increase in Fig. 7. Their location is related mainly on the equilibria based on the law of mass action according to eqn (4) and (5), where the bromine concentration is proportional and quadratic respectively, and the comparison of the equilibrium constants is  $K_3 < K_5$ . The existing concentration of free bromide ions  $\text{Br}^-$  is lower than the global concentration as a part of the bromide is bound in the polybromides. The amount of free bromine  $c(\text{Br}_2)_{\text{eq}}$  is small compared to polybromide concentrations. Heptabromides are not included in the simulation because its equilibrium constant is not known in the literature. Taking the solubility limit of  $\text{Br}_2$  in aqueous HBr solutions according to eqn (10) into account, the concentration of  $\text{Br}_2$  in aqueous HBr solutions decreases for SOC > 89.40% ( $c(\text{HBr}) < 1.7$  M and  $c(\text{Br}_2) > 3.0$  M) (Fig. 7). As a result, less  $\text{Br}_5^-$  is formed and more  $\text{Br}_3^-$  is present over a wider SOC range. The bromine concentration  $c(\text{Br}_2)_{\text{eq}}$  slowly decreases to the measured solubility limit of  $0.22 \text{ mol L}^{-1}$   $\text{Br}_2$  in water at SOC = 115%. Values in Fig. 7 are used to compare simulated values with real measured polybromide concentrations.

### Raman analysis of the electrolyte samples

To prove the validity of the assumed polybromide equilibria, polybromide concentrations are determined experimentally. To evaluate the polybromide composition of the 24 aqueous solutions, electrolyte samples are examined by Raman spectroscopy and show Raman peaks in the range of the Raman shift between  $\tilde{\nu} = 125 \text{ cm}^{-1}$  and  $325 \text{ cm}^{-1}$ , shown in example for SOC = 80%

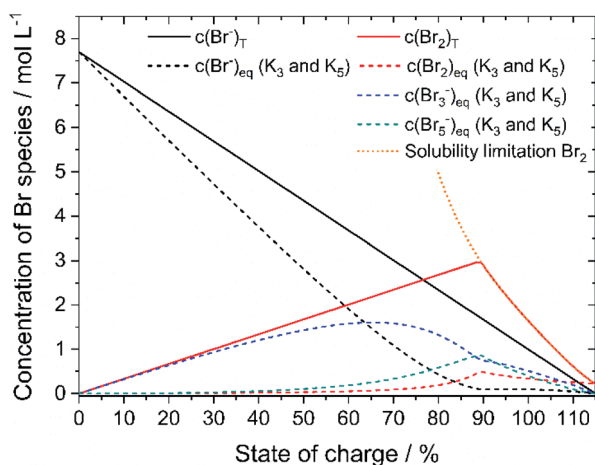


Fig. 7 Plot of the theoretical concentration of  $\text{HBr}_T$ ,  $\text{Br}_{2,T}$ ,  $\text{Br}_{3,\text{eq}}^-$ ,  $\text{Br}_{5,\text{eq}}^-$  with  $K_3 = 16 \text{ L mol}^{-1}$  and  $K_5 = 37 \text{ L}^2 \text{ mol}^{-2}$  including bromine solubility limit.

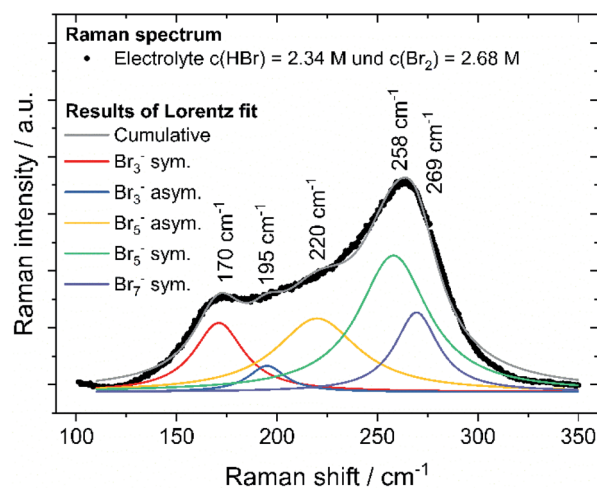


Fig. 8 Raman spectrum of the electrolyte mixture with  $c(\text{HBr}) = 2.34$  M and  $c(\text{Br}_2) = 2.68$  M (SOC = 80%) and water including Raman fitting for the symmetrical and antisymmetrical stretching oscillation of tribromide, pentabromide and heptabromide.

in Fig. 8. Raman spectra of all 24 investigated samples are shown in the ESI (Fig. S1–S5†). Two main peaks at  $\tilde{\nu} = 170 \text{ cm}^{-1}$  and  $\tilde{\nu} = 260 \text{ cm}^{-1}$  are prominent in the spectra, which are mainly assigned to symmetrical stretching vibration of  $\text{Br}_3^-$  ( $\tilde{\nu} = 170 \text{ cm}^{-1}$ ) and  $\text{Br}_5^-$  superimposed by  $\text{Br}_7^-$  ( $\tilde{\nu} = 260 \text{ cm}^{-1}$ ). Due to the increasing  $\text{Br}_2$  content over the SOC range,  $\text{Br}_5^-$  peak at  $\tilde{\nu} = 258 \text{ cm}^{-1}$  first increases. For SOC > 60%, bromine is increasingly stored in  $\text{Br}_7^-$  at the expense of  $\text{Br}_5^-$ . The  $\text{Br}_5^-$  concentration decreases while the  $\text{Br}_7^-$  concentration increases, which leads to a shift of the main peak to higher Raman shifts at  $\tilde{\nu} = 269 \text{ cm}^{-1}$  (Fig. S1 and S2 in ESI†). The presence of  $\text{Br}_7^-$  as higher polybromide at high bromine concentrations is observed for those electrolytes. An equilibrium of  $\text{Br}_7^-$  is needed to describe the existence of  $\text{Br}_7^-$ :



For the samples with SOC > 100%, an additional weak shoulder overlapping the strong signal of the  $\text{Br}_7^-$  is visible. This peak is assigned to dissolved elemental  $\text{Br}_2$  at  $\tilde{\nu}(\text{Br}_2)_{\text{sym.}} = 311 \text{ cm}^{-1}$  and is found only when the phases of bromine and electrolyte separate. The peak is weak, indicating only minor amounts of elemental  $\text{Br}_2$  present and too weak to be fitted. Bromine, which cannot pass into solution as polybromide, is present in small amounts in aqueous electrolyte there.

$\text{Br}_2$  distribution on the different polybromides  $x(\text{Br}_{2n+1}^-)$  was calculated from the strongly responding peaks of symmetric stretching of the polybromides only, after fitting and shown in Fig. 8. All fits achieve a coefficient of determination  $R^2$  of 0.975 or higher and are shown in the ESI in Fig. S3 to S5.† Due to this method, polybromide concentrations in aqueous solution are determined and their influence on other performance parameters is investigated. Also, the existence of polybromides available in high concentrated bromine electrolyte solutions is proven.





### Polybromide distribution and polybromide concentration verification of polybromide equilibria

To validate the accuracy of the simulated polybromide equilibria and concentrations and the applicability of their equilibrium constants, the distribution of  $\text{Br}_2$  across the three polybromide types and the concentrations of the polybromides are shown in Fig. 9.  $\text{Br}_3^-$  and  $\text{Br}_5^-$  are present throughout the entire SOC range (Fig. 9a), while the distribution of  $\text{Br}_2$  in  $\text{Br}_5^-$  predominates.  $\text{Br}_7^-$  is available in small amounts for SOC < 60% and rises for higher SOC values. The proportions of bromine stored in  $\text{Br}_3^-$ ,  $\text{Br}_5^-$  and  $\text{Br}_7^-$  are almost constant for low SOC values with  $x(\text{Br}_3^-) = 0.288$  (SOC  $\leq 45\%$ ),  $x(\text{Br}_5^-) = 0.695$  (SOC  $\leq 66\%$ ),  $x(\text{Br}_7^-) = 0.011$  (SOC  $\leq 45\%$ ) and almost independent of the SOC (Fig. 9a). There is no dependence of the polybromide distribution on the SOC and therefore also on the total bromine concentration  $c(\text{Br}_2)_T$  as well as the concentrations of free bromide ions  $c(\text{HBr})_{\text{eq}}$ . For SOC  $\leq 45\%$ , the bromine distribution leads to an approximately linear increase in the concentration of polybromide ions as a function of  $c(\text{Br}_2)_T$  (Fig. 9b). For SOC > 45% and 66% the proportion of  $\text{Br}_2$  in  $\text{Br}_3^-$  and  $\text{Br}_5^-$ , respectively, are decreasing till reaching the solubility limit at

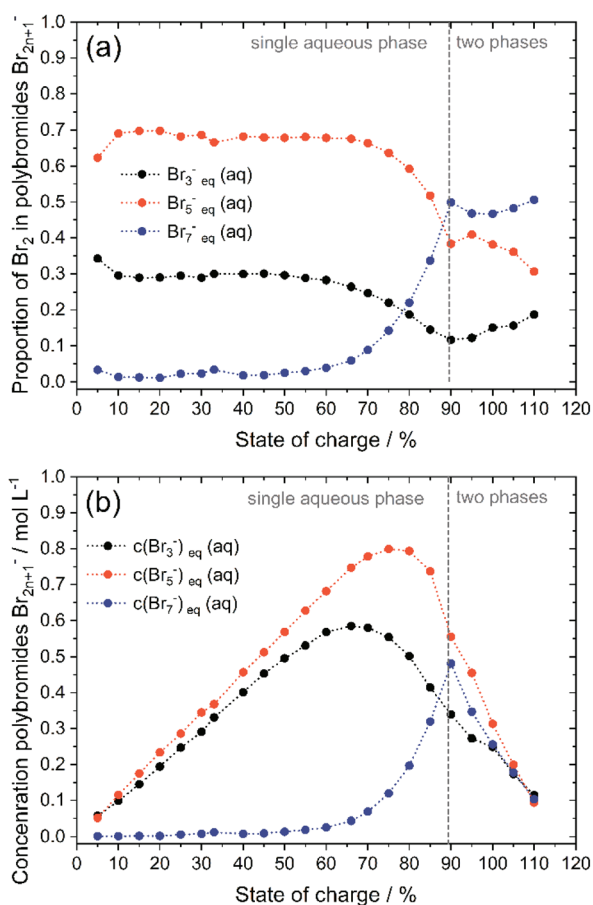


Fig. 9 (a) Distribution of bromine on different polybromides  $x(\text{Br}_3^-)$ ,  $x(\text{Br}_5^-)$  and  $x(\text{Br}_7^-)$  for the investigated electrolyte mixture as a function of SOC and (b) polybromide concentrations as a function of SOC for the investigated electrolytes.

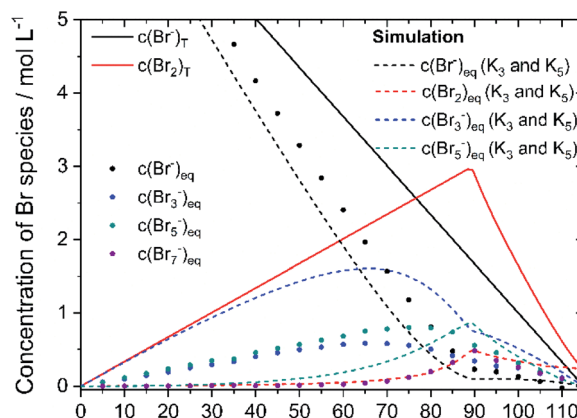


Fig. 10 Comparison of polybromide concentrations from measurements (dots) with simulated values based on polybromide equilibria from the literature (dashed line) next to global and equilibrium concentrations of bromine (red – line and dashed line) and HBr (black – line, dots and dashed line).

SOC = 89.40%, while the proportion of  $\text{Br}_2$  in  $\text{Br}_7^-$  is rising continuously within that range. All values for distribution of  $\text{Br}_2$  on polybromides and polybromide concentrations are listed in Table S2 in the ESI.†

To verify the presence of the polybromide equilibria according to eqn (2) and (3) and the applicability of the equilibrium constants to the polybromide concentrations, the measured and calculated polybromide concentrations are compared in Fig. 10. The measured polybromide concentrations do not correspond to the simulated values in Fig. 10. Over the whole SOC range much lower concentrations of  $\text{Br}_3^-$  are measured than calculated in the simulation. In parallel measured  $\text{Br}_5^-$  concentrations are higher than calculated values in the simulation. One reason for this discrepancy can be sought in the presence of  $\text{Br}_5^-$  from SOC = 0%, although eqn (5) with  $K_5 = 37 \text{ L}^2 \text{ mol}^{-2}$  and eqn (4) predict an occurrence of  $\text{Br}_5^-$  only at high total  $\text{Br}_2$  concentrations. According to eqn (5), therefore, much higher values for  $K_3$  and  $K_5$  need to be expected for these concentrations, or the equilibrium model according to eqn (3) is not valid in the chosen concentration range. From SOC > 66%, the  $\text{Br}_7^-$  content is relevant and increasing. As  $\text{Br}_7^-$  incorporates three times the amount of bromine molecules compared to  $\text{Br}_3^-$ , the amount of  $\text{Br}_3^-$  and  $\text{Br}_5^-$  decreases further (Fig. 9b). Related to the differences between simulation and measurement and the constant bromine distribution according to Fig. 9a for SOC < 45%, it is assumed that in addition the equilibrium concentrations in these non-ideal solutions are strongly dependent on the electrolyte composition.

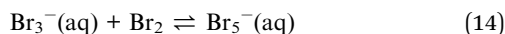
The equilibrium constants  $K_3 = 16 \text{ L mol}^{-1}$  and  $K_5 = 37 \text{ L}^2 \text{ mol}^{-2}$  and the associated equilibria eqn (2) and (3) do not adequately describe the distribution of  $\text{Br}_2$  for these selected electrolyte concentrations as a function of the SOC. The  $\text{Br}_7^-$  equilibrium must be considered in addition.



## Discussion of polybromide distribution in aqueous electrolytes

In order to understand the different involved phenomena, the SOC range is separated in three parts: part 1 from  $0 \leq \text{SOC} \leq 45\%$ , part 2 from  $45\% < \text{SOC} \leq 89.40\%$  and part 3 for  $\text{SOC} > 89.40\%$ .

In the area  $\text{SOC} \leq 45\%$  (part 1) a sufficiently excess quantity of HBr is present in the solution (Fig. 10) and all converted bromine molecules stay in solution as respective polybromides, predominantly  $\text{Br}_3^-$  and  $\text{Br}_5^-$ . Free bromide  $c(\text{HBr})_{\text{eq}}$  is still available in excess. Linearly rising concentrations of polybromide concentrations in Fig. 9b are a consequence of constant  $\text{Br}_2$  distribution on the three different polybromides and linearly rising total  $\text{Br}_2$  concentration with the SOC. Although the measured concentrations of  $\text{Br}_3^-$  are lower in this range than the simulated concentrations for  $\text{Br}_3^-$ , for  $\text{SOC} < 80\%$  the concentrations of simulated and measured values are directly proportional. This is an indication that the tribromide equilibrium according to eqn (2) is valid. The directly proportional relationship between the concentrations of  $\text{Br}_3^-$ ,  $\text{Br}_5^-$  and  $\text{Br}_7^-$ , however, indicates a direct relationship between the polybromides. In the area for  $\text{SOC} \leq 45\%$  a sequential equilibrium order is suggested with the original  $\text{Br}_3^-$  equilibrium according to eqn (2), and the following equilibria according to eqn (14) and (15):



Duranti *et al.*<sup>53</sup> also applies sequential storage of  $\text{Br}_2$  up to  $\text{Br}_5^-$  following eqn (2) and (14), but did not justify his assumption experimentally.

It seems that bromine molecules which are not bound in polybromides form a separate phase and probably are not included in the mass action law in these areas. As a consequence, they are considered in the law of mass action leading to a formal activity of bromine of 1. However, it is found that the ratio between  $c(\text{Br}_3^-)$  and  $c(\text{Br}_5^-)$  between  $0\% \leq \text{SOC} \leq 60\%$  is almost constant, why eqn (5) is replaced by eqn (16):

$$K_{3,5} = \frac{c(\text{Br}_5^-)_{\text{eq}}}{c(\text{Br}_3^-)_{\text{eq}}} [K_{3,5}] = 1 \quad (16)$$

For  $\text{Br}_7^-$  the same linear relation to  $\text{Br}_5^-$  is suggested:

$$K_{5,7} = \frac{c(\text{Br}_7^-)_{\text{eq}}}{c(\text{Br}_5^-)_{\text{eq}}} [K_{5,7}] = 1 \quad (17)$$

In the range for  $0\% \leq \text{SOC} \leq 45\%$  the equilibrium constants are described with the following values  $K_3 \approx 4.734 \text{ L mol}^{-1}$ ,  $K_{3,5} = 1.163$  and  $K_{5,7} = 1.89 \times 10^{-2}$ .

For  $50\% < \text{SOC} \leq 89.40\%$  (part 2) the concentrations of  $\text{Br}_3^-$  ( $\text{SOC} \geq 50\%$ ) and  $\text{Br}_5^-$  ( $\text{SOC} \geq 70\%$ ) increase at a slower rate (Fig. 9b). Both concentration curves reach a peak point and then decrease with increasing SOC. For  $\text{Br}_3^-$  the peak point is at SOC

= 65% with  $c(\text{Br}_3^-) = 0.585 \text{ M}$  and for  $\text{Br}_5^-$  at  $\text{SOC} = 75\%$  with  $c(\text{Br}_5^-) = 0.800 \text{ M}$ . The concentration of  $\text{Br}_7^-$  rises progressively in this range. At  $\text{SOC} = 90\%$ , the concentration peak of  $\text{Br}_7^-$  results at  $c(\text{Br}_7^-) = 0.481 \text{ M}$ . The tendency to form higher polybromides increases with increasing total bromine concentration  $c(\text{Br}_2)_T$  and simultaneously decreasing bromide concentration  $c(\text{HBr})_{\text{eq}}$  starting from  $\text{SOC} \geq 50\%$ . The amount of free HBr in solution is not sufficient to take up all the  $\text{Br}_2$ . Less  $\text{Br}_3^-$ , but more  $\text{Br}_7^-$  is formed. For  $\text{SOC} \geq 66\%$   $\text{Br}_2$  is increasingly stored by further conversion of the  $\text{Br}_3^-$  to  $\text{Br}_5^-$  and to  $\text{Br}_7^-$ . For  $\text{SOC} \geq 75\%$  and above,  $\text{Br}_5^-$  and  $\text{Br}_3^-$  concentrations decrease further by the uptake and formation of  $\text{Br}_7^-$ . But joint application of equilibria following eqn (2), (3) and (13) is not valid so far in this concentration range. A mathematical relation for  $K$  values in this range has not been found.

In part 3 for  $\text{SOC} > 89.4\%$  the solubility of bromine is limited following eqn (10). The dominance of  $\text{Br}_7^-$  compared to  $\text{Br}_3^-$  can be seen in the distribution of  $\text{Br}_2$  on the polybromides (Fig. 9a). For  $\text{SOC} > 60\%$  the amount of  $\text{Br}_2$  in  $\text{Br}_7^-$  increases strongly, while the amounts of  $\text{Br}_2$  in  $\text{Br}_5^-$  and  $\text{Br}_3^-$  decrease. Crossing the solubility limit for  $\text{SOC} > 89.40\%$ , the amount of bromine in  $\text{Br}_3^-$  increases slowly with rising SOC from high to low concentrations of HBr. Jones and Beackström<sup>20</sup> tried to explain this effect in 1934 theoretically from the solubility measurements of  $\text{Br}_2$  in KBr solutions, without having access to Raman spectroscopy. They discussed that the formation of  $\text{Br}_3^-$  is not sufficient describing the rising solubility of  $\text{Br}_2$  in aqueous solutions, and stated the existence of  $\text{Br}_5^-$ .<sup>20</sup> It can even be concluded that with increasing  $\text{Br}^-$  concentration the tendency to form  $\text{Br}_7^-$  is pronounced and most proportion of  $\text{Br}_2$  is stored in  $\text{Br}_7^-$ .

## Influence of polybromides on the conductivity

As the polybromide distribution and concentrations are known for the entire SOC range, it is necessary to step back and evaluate their dependence on the conductivity (Fig. 6 – green dots). Between  $2.0 \text{ M} < c(\text{HBr}) < 5.69 \text{ M}$ , the conductivity of the bromine-containing solution is lower than that of the bromine-free series. The presence of bromine and especially polybromides reduces the conductivity. The difference between pure HBr/ $\text{H}_2\text{O}$  solutions and HBr/ $\text{Br}_2/\text{H}_2\text{O}$  solutions is most significant at  $c(\text{HBr}) = 2 \text{ M}/c(\text{Br}_2) = 2.85 \text{ M}$  with  $\Delta\kappa = 132 \text{ mS cm}^{-1}$ , with the highest bromine and  $\text{Br}_7^-$  concentration in the aqueous solution. The most relevant is the hinderance of polybromides on the Grotthus mechanism in solution with the oxonium ions and water molecules. Due to the larger molecule volumes of the hydrolysed polybromides and the increasing concentration of polybromides in aqueous solution, the charges can no longer be transferred in the direct way, but must bypass the larger polybromide ions. Next to Grotthus charge transport slower migration of polybromides in the electric field is expected. For higher polybromides, a larger hydrodynamic radii are expected. The equivalent conductivities of bromide and polybromides in literature with  $\lambda(\text{Br}^-) = 78.1 \text{ S cm}^2 \text{ mol}^{-1}$ ,<sup>19,34,54</sup>  $\lambda(\text{Br}_3^-) = 43 \text{ S cm}^2 \text{ mol}^{-1}$ ,<sup>20</sup>  $\lambda(\text{Br}_5^-) = 15.6 \text{ S cm}^2 \text{ mol}^{-1}$  (ref. 54) or  $\lambda(\text{Br}_5^-) = 30 \text{ S cm}^2 \text{ mol}^{-1}$  (ref. 20) show the corresponding



trend. No equivalent conductivities for  $\text{Br}_7^-$  are available in the literature.

It can be concluded that higher polybromides like  $\text{Br}_5^-$  or  $\text{Br}_7^-$  lead to lower electrolyte conductivities, but their formation is related to high bromine concentration *versus* low bromide concentration available in solution. In general, conductivities are high as Grotthus mechanism of protons in water dominates the transport of charges in the electrolyte.

## Conclusions

The electrolyte composition and the operation limits of a high capacity bromine electrolyte for a  $\text{H}_2/\text{Br}_2$ -RFB were investigated in detail based on 48 wt% HBr solution, bromine and water. The most favourable operation range was defined based on the results. For discharged electrolyte at SOC = 0% a concentration of 7.7 M HBr and 0 M  $\text{Br}_2$  in  $\text{H}_2\text{O}$  and for charged electrolyte at SOC = 100% of 1 M HBr and 3.35 M  $\text{Br}_2$  were defined. Future work will focus on the application of additives in this electrolyte, which are added to the electrolyte and are intended to bind  $\text{Br}_2$ . The addition of these additives leads to a dilution of the commercially available hydrobromic acid HBr 48 wt%. Therefore, for SOC = 0% a HBr concentration of 7.7 M is introduced. The definition of concentrations at SOC = 100% is mainly based on two effects: (1) the solubility of bromine in electrolytes with  $c(\text{HBr}) < 1.7 \text{ M}$  and  $c(\text{Br}_2) > 3 \text{ M}$  is limited and leads to a formation of non-conductive pure  $\text{Br}_2$  phase in the  $\text{H}_2/\text{Br}_2$ -RFB. In parallel (2) high electrolyte conductivities in the entire SOC range are achieved between  $298 \leq \kappa \leq 763 \text{ mS cm}^{-1}$  ( $\theta = 23^\circ\text{C}$ ). Polybromides in solution slightly lower the conductivity compared to pure HBr/ $\text{H}_2\text{O}$  solutions. Due to the chosen high concentrated HBr/ $\text{Br}_2$  electrolytes in combination with the limitations a high electrolyte capacity of  $179.6 \text{ A h L}^{-1}$  is achieved.

It was found that bromine is present in aqueous solution in the form of not only  $\text{Br}_3^-$ ,  $\text{Br}_5^-$ , but also most probably  $\text{Br}_7^-$ . Since polybromides are not present individually in aqueous solution, Raman spectroscopy was used to determine the polybromide proportions in solution. The distribution of bromine in  $\text{Br}_3^-$ ,  $\text{Br}_5^-$  and  $\text{Br}_7^-$  is largely constant and independent of the HBr and  $\text{Br}_2$  concentrations for SOC  $\leq 45\%$ . For SOC  $\geq 50\%$  there is a lack of HBr compared to  $\text{Br}_2$ , so that higher polybromides such as  $\text{Br}_7^-$  are formed at the expenses of lower polybromides such as  $\text{Br}_3^-$  and  $\text{Br}_5^-$ . In addition, higher polybromides in form of  $\text{Br}_7^-$  need to be considered to describe the state of the electrolyte. A verification of the chemical polybromide equilibria known in the literature shows that for high concentration of  $>1 \text{ M}$  HBr and  $\text{Br}_2$  the concentration-based mass action laws and their equilibrium constants proposed in the literature cannot be applied. For SOC  $< 45\%$ , a proposal for existing equilibria and equilibrium constants was developed.

## Credit author statement

Michael Küttinger: conceptualization, methodology, experimental investigation, data analysis, visualisation, simulation, writing – original draft, writing – editing and review. Jakob K.

Włodarczyk: data analysis, visualisation, writing–editing and review. Daniela Daubner: methodology, experimental investigation, data analysis. Peter Fischer: writing–editing and review. Jens Tübke: writing–editing and review.

## Conflicts of interest

There are no conflicts to declare.

## Acknowledgements

This work is supported at Fraunhofer ICT by the State of Baden-Wuerttemberg in the context of the project “RedoxWind”. At ZHAW the project has received funding from the European Union's Horizon 2020 research programme under the Marie Skłodowska-Curie Grant Agreement no. 765289. The authors would like to greatly acknowledge both funding organisations.

## References

- 1 J. Noack, N. Roznyatovskaya, T. Herr and P. Fischer, *Angew. Chem., Int. Ed.*, 2015, **54**, 9776–9809.
- 2 Y. V. Tolmachev, *Russ. J. Electrochem.*, 2014, **50**, 301–316.
- 3 G. Lin, P. Y. Chong, V. Yarlagadda, T. V. Nguyen, R. J. Wycisk, P. N. Pintauro, M. Bates, S. Mukerjee, M. C. Tucker and A. Z. Weber, *J. Electrochem. Soc.*, 2015, **163**, A5049–A5056.
- 4 A. J. Bard, R. Parsons and J. Jordan, *Standard Potentials in Aqueous Solution, Bromine*, CRC Press, New York, 1985.
- 5 K. J. Vetter, *Elektrochemische Kinetik*, Springer Berlin Heidelberg, Berlin, Heidelberg, 1961.
- 6 W. M. Latimer, *Oxidation Potentials. The oxidation states of the elements and their potentials in aqueous solutions*, Prentice Hall, New York, 1953.
- 7 R. S. Yeo and D. -T. Chin, *J. Electrochem. Soc.*, 1980, **127**, 549–555.
- 8 K. T. Cho, P. Ridgway, A. Z. Weber, S. Haussener, V. Battaglia, V. Srinivasan, K. T. Cho, P. Ridgway, A. Z. Weber, S. Haussener, V. Battaglia and V. Srinivasan, *J. Electrochem. Soc.*, 2012, **159**, A1806–A1815.
- 9 Y. A. Hugo, W. Kout, F. Sikkema, Z. Borneman and K. Nijmeijer, *J. Storage Mater.*, 2020, **27**, 101068.
- 10 Y. A. Hugo, N. Mazur, W. Kout, F. Sikkema, Z. Borneman and K. Nijmeijer, *J. Electrochem. Soc.*, 2019, **166**, A3004–A3010.
- 11 V. Livshits, A. Ulus and E. Peled, *Electrochem. Commun.*, 2006, **8**, 1358–1362.
- 12 G. G. Barna, S. N. Frank, T. H. Teherani and L. D. Weedon, *J. Electrochem. Soc.*, 1984, **131**, 1973.
- 13 K. Saadi, P. Nanikashvili, Z. Tatus-Portnoy, S. Hardisty, V. Shokhen, M. Zysler and D. Zitoun, *J. Power Sources*, 2019, **422**, 84–91.
- 14 G. Gershinsky, P. Nanikashvili, R. Elazari and D. Zitoun, *ACS Appl. Energy Mater.*, 2018, **1**, 4678–4685.
- 15 K. T. Cho, M. C. Tucker and A. Z. Weber, *Energy Technol.*, 2016, **4**, 655–678.
- 16 Y. A. Hugo, W. Kout, G. Dalessi, A. Forner-Cuenca, Z. Borneman and K. Nijmeijer, *Processes*, 2020, **8**, 1492.



- 17 H. Kreutzer, V. Yarlagadda and T. van Nguyen, *J. Electrochem. Soc.*, 2012, **159**, F331–F337.
- 18 S. Brownstein and A. E. Stillman, *J. Phys. Chem.*, 1959, **63**, 2061–2062.
- 19 W. M. Haynes, D. R. Lide and T. J. Bruno, *CRC Handbook of Chemistry and Physics*, CRC Press-Taylor & Francis, Boca Raton, 96th edn, 2015.
- 20 G. Jones and S. Baeckström, *J. Am. Chem. Soc.*, 1934, **56**, 1524–1528.
- 21 W. C. Bray, *J. Am. Chem. Soc.*, 1910, **32**, 932–938.
- 22 F. P. Worley, *J. Chem. Soc., Trans.*, 1905, **87**, 1107–1123.
- 23 M. Eigen and K. Kustin, *J. Am. Chem. Soc.*, 1962, **84**, 1355–1361.
- 24 H. A. Liebhafsky, *J. Am. Chem. Soc.*, 1939, **61**, 3513–3519.
- 25 R. C. Beckwith, T. X. Wang and D. W. Margerum, *Inorg. Chem.*, 1996, **35**, 995–1000.
- 26 T. X. Wang, M. D. Kelley, J. N. Cooper, R. C. Beckwith and D. W. Margerum, *Inorg. Chem.*, 1994, **33**, 5872–5878.
- 27 G. N. Lewis and H. Storch, *J. Am. Chem. Soc.*, 1917, **39**, 2544–2554.
- 28 R. O. Griffith, A. McKeown and A. G. Winn, *Trans. Faraday Soc.*, 1932, **28**, 101.
- 29 D. B. Scaife and H. J. V. Tyrrell, *J. Chem. Soc.*, 1958, 386–392.
- 30 M. S. Sherrill and E. F. Izard, *J. Am. Chem. Soc.*, 1928, **50**, 1665–1675.
- 31 R. W. Ramette and D. A. Palmer, *J. Solution Chem.*, 1986, **15**, 387–395.
- 32 M. E. Easton, A. J. Ward, B. Chan, L. Radom, A. F. Masters and T. Maschmeyer, *Phys. Chem. Chem. Phys.*, 2016, **18**, 7251–7260.
- 33 G. N. Lewis and M. Randall, *J. Am. Chem. Soc.*, 1916, **38**, 2348–2356.
- 34 H. A. Liebhafsky, *J. Am. Chem. Soc.*, 1934, **56**, 1500–1505.
- 35 W. C. Bray and E. L. Connolly, *J. Am. Chem. Soc.*, 1911, **33**, 1485–1487.
- 36 T. Mussini and G. Faita, *Encyclopedia of electrochemistry of the elements, Bromine*, Dekker, New York, 1973.
- 37 A. A. Jakowkin, *Z. Phys. Chem.*, 1896, **20U**, 19–39.
- 38 C. Fabjan and G. Hirss, *Dechema Monographien Band*, 1985, **102**, 149–161.
- 39 K. T. Cho, P. Albertus, V. Battaglia, A. Kojic, V. Srinivasan and A. Z. Weber, *Energy Technol.*, 2013, **1**, 596–608.
- 40 R. S. Baldwin, *NASA Tech. Memo.*, 1987, **89862**, 1–26.
- 41 J. C. Evans and G. Y. S. Lo, *Inorg. Chem.*, 1967, **6**, 1483–1486.
- 42 W. B. Person, G. R. Anderson, J. N. Fordemwalt, H. Stammreich and R. Forneris, *J. Chem. Phys.*, 1961, **35**, 908–914.
- 43 M. E. Easton, A. J. Ward, T. Hudson, P. Turner, A. F. Masters and T. Maschmeyer, *Chem.–Eur. J.*, 2015, **21**, 2961–2965.
- 44 H. Haller, J. Schröder and S. Riedel, *Angew. Chem., Int. Ed.*, 2013, **52**, 4937–4940.
- 45 J. Milne, *Spectrochim. Acta, Part A*, 1992, **48**, 533–542.
- 46 A. I. Anderson, *Proc. Phys. Soc.*, 1927, **40**, 62–70.
- 47 A. Seidell, *Solubilities of inorganic and organic compounds*, D. Van Nostrand Company, New York, 1919.
- 48 R. F. Savinell and S. D. Fritts, *Theoretical and Experimental Flow Cell Studies of a Hydrogen-Bromine Fuel Cell*, NASA Contract NAG 3-500, Department of Chemical Engineering, Akron, Ohio, 1986.
- 49 W. J. Hamer and H. J. DeWane, *Electrolytic conductance and the conductances of the halogen acids in water*, U. S. Government Printing Office, Washington D. C., 1970.
- 50 K.-D. Kreuer, A. Rabenau and W. Weppner, *Angew. Chem.*, 1982, **94**, 224–225.
- 51 A. T. Howe and M. G. Shilton, *J. Solid State Chem.*, 1979, **28**, 345–361.
- 52 Y. Marcus, *J. Chem. Soc., Faraday Trans. 1*, 1979, **75**, 1715.
- 53 M. Duranti, E. G. Macchi and L. Crema, *J. Electrochem. Soc.*, 2020, **167**, 100523.
- 54 I. Rubinstein, M. Bixon and E. Gileadi, *J. Phys. Chem.*, 1980, **84**, 715–721.

