

Cite this: *RSC Adv.*, 2017, 7, 14923

# Porphyrin based nano-sized imprinted polymer as an efficient modifier for the design of a potentiometric copper carbon paste electrode†

Hamid Reza Rajabi,\* Arezoo Zarezadeh and Gholamreza Karimipour

In this study, a new carbon paste electrode (CPE) modified with porphyrin-based ion imprinted polymer (IIP) was designed and applied for the potentiometric determination of  $\text{Cu}^{2+}$  ions in aqueous solutions. The Cu-IIP was prepared using methacrylic acid, ethyleneglycoldimethacrylate monomers, in the presence of a copper complex of 5,10,15,20-tetrakis(4-hydroxyphenyl)-porphyrin. After polymerization, the prepared polymer was eluted by an aqueous solution of hydrochloric acid to leach the imprinted ions, which results in an obvious change in its color from purple to light brown. By microscopic analysis, the mean particle size of the prepared leached IIP was estimated to be around 60 nm. After characterization, the prepared IIP NPs were used as a modifier to design a modified CPE for potentiometric determination of  $\text{Cu}^{2+}$  ions in aqueous solutions. As found, at the optimum paste composition, the modified potentiometric sensor exhibited an excellent Nernstian response ( $30.15 \pm 0.2 \text{ mV dec}^{-1}$ ) to the logarithm of  $\text{Cu}^{2+}$  ion concentration over the concentration range of  $4.0 \times 10^{-9}$  to  $2.0 \times 10^{-1} \text{ mol L}^{-1}$ . Moreover, the designed sensor showed a low detection limit ( $2.0 \times 10^{-9} \text{ mol L}^{-1}$ ) with a short response time ( $\sim 5 \text{ s}$ ) and acceptable stability (at least 2 months). In addition, the sensor was successfully applied as a reasonable indicator electrode in potentiometric titration (against EDTA) with high precision and accuracy. Applicability of the IIP NP modified CPE was examined and confirmed by analysis of various water samples for the determination of  $\text{Cu}^{2+}$  ions.

Received 24th November 2016  
Accepted 1st March 2017

DOI: 10.1039/c6ra27288f

rsc.li/rsc-advances

## 1. Introduction

Copper is an essential element present in all organisms, which plays a key role during cell respiration, blood formation, as well as in the function of endocrine glands.<sup>1,2</sup> Although copper is not a toxic element; however, it is toxic at high concentration.<sup>3</sup> So, it is necessary to acquire and develop methods that make it possible to determine copper ions in environmental real samples with high selectivity and accuracy. Some of the common analytical methods for the determination of copper ions are atomic absorption spectrometry,<sup>4,5</sup> UV-Vis absorption spectroscopy,<sup>6</sup> ion selective electrodes,<sup>7</sup> inductively coupled plasma atomic emission spectrometry,<sup>8</sup> chemiluminescence,<sup>9</sup> stripping voltammetry,<sup>10</sup> and fluorescence<sup>11</sup> techniques. However, among the analytical methods for determination of copper ions, potentiometric determination of copper using carbon paste electrodes (CPEs) assumes importance in view of its widespread occurrence in various samples.<sup>12</sup> This kind of electrode is commonly applied in electrochemical studies due to their high physical stability, long lifetime, low cost, low

background current, and easy construction.<sup>13</sup> Meanwhile, modification of bare CPE using different compounds can improve the sensor characteristics such as its selectivity, sensitivity, applicability and response time.

In recent years, due to high selectivity of ion imprinted polymers (IIP) toward their template, IIP-modified electrodes have attracted considerable interests to develop the selectivity and response behavior of the electrochemical sensors.<sup>14,15</sup> IIPs can recognize the target ions with high selectivity by using their cavities or "imprinted sites" which formed in the polymeric network during synthesis.<sup>16–19</sup> Up to date, a variety of IIPs have been reported for separation and determination of copper ions using different complexing or chelating agents such as 1-(2-pyridylazo)-2-naphthol,<sup>20</sup> 4-(2-pyridylazo) resorcinol,<sup>21</sup> salen,<sup>22</sup> itaconic acid,<sup>23</sup> thiosemicarbazide,<sup>24</sup> carboxybenzotriazole,<sup>25</sup> *n*-methacrylamidohistidine-dihydrate,<sup>26</sup> 2,9-dimethyl-1,10-phenanthroline,<sup>27</sup> 5,6,14,15-dibenzo-1,4-dioxo-8,12-diazacyclopentadecane-5,14-diene.<sup>28</sup> However; to the best of our knowledge, a little attention has been paid to the application of nano-scaled porphyrin based IIP as modifiers in the chemically modified CPEs for potentiometric determination of  $\text{Cu}^{2+}$  ion.

The aim of this work was to develop a new modified CPE with a porphyrin based Cu-IIP for potentiometric determination of  $\text{Cu}^{2+}$  ion. The preparation of Cu-IIP was carried out by a thermal polymerization method, in the presence of copper ion,

Chemistry Department, Yasouj University, Yasouj, 75918-74831, Iran. E-mail: h. rajabi@mail.yu.ac.ir; Fax: +98 741 2242164; Tel: +98 741 2242164

† Electronic supplementary information (ESI) available. See DOI: 10.1039/c6ra27288f

5,10,15,20-tetrakis(4-hydroxyphenyl)-porphyrin, methacrylic acid and ethyleneglycoldimethacrylate. Then, the templated copper metal ion was removed from the polymeric particles by leaching with mineral acid and its morphology has been characterized by scanning electron microscopy. The influence of different affecting parameters on the response characteristics of the designed modified electrode was investigated. After optimization the experimental parameters, this potentiometric sensor was tested for  $\text{Cu}^{2+}$  ion determination in different water samples as well as an indicator electrode in potentiometric titration.

## 2. Experimental

### 2.1. Reagents and materials

All used chemicals were of analytical reagent grade. Double distilled water was used for preparation of solutions and for washing. In the synthesis of Cu-IIP; methacrylic acid (MAA), ethyleneglycoldimethacrylate (EGDMA), and 2,2'-azobisisobutyronitrile (AIBN) were supplied by DAEJUNG company (Korea). Graphite powder, sodium tetraphenylborate (NaTPB) and paraffin oil (Fluka) were used for the preparation of the unmodified and modified CPEs.  $\text{Cu}(\text{NO}_3)_2 \cdot 6\text{H}_2\text{O}$  was commercially available as analytical reagent grade and used without further purification.

### 2.2. Apparatus

All the potential and pH measurements were carried out with a pH/ion meters model 691-ZAGCHIMI (Iran). The surface morphology of the polymers was recorded on a Philips XL30 series instrument using a gold film for loading the dried particles on the instrument. The FT-IR spectra were recorded using a Shimadzu FT-IR 8300 spectrophotometer (Japan).

### 2.3. Synthesis of 5,10,15,20-tetrakis(4-hydroxyphenyl)porphyrin

Synthesis of 5,10,15,20-tetrakis(4-hydroxyphenyl)porphyrin (THPP) was carried out in one steps, as shown in Scheme 1. THPP was prepared according to the literature methods *via* condensation of freshly distilled pyrrole with 4-hydroxybenzaldehyde.<sup>29</sup> The product was purified through column chromatography (neural alumina) with 4 : 1 mixture of ethanol-chloroform, as eluent. The obtained solution was evaporated to

dryness under vacuum to yield *ca.* 15% of the porphyrin ligand.  $^1\text{H NMR}$  ( $\text{CDCl}_3$ )  $\delta$ : -2.81 (s, 2H, NH), 7.36–8.11 (m, 16H, o- and m-Ph), 8.98 (s, 8H, pyrrole), 10.01 (4H, OH). UV-Vis ( $\lambda_{\text{max}}$  nm in THF):  $\lambda_{\text{max}}$  (log  $\epsilon$ ): 419 (4.92: Soret band) and 515 (3.65), 550 (3.43), 593 (3.25), 650.5 (3.25) [Q-bands].

### 2.4. Preparation of $\text{Cu}^{2+}$ -ion imprinted polymers

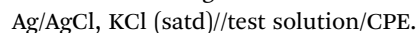
The synthesis of Cu-IIP was carried out by precipitation polymerization method. Briefly, 0.1 mmol of copper nitrate and 0.1 mmol of THPP and 0.4 mmol of MAA were placed into 23 mL of ethanol-acetonitrile mixture (2 : 1) as porogen solvent and mixed with continuous stirring for 1 h. Then, 4.0 mmol of EGDMA and 50 mg AIBN (as free radical initiator) was added to the solution, successively. Next, the solution was purged with  $\text{N}_2$  gas for 10 min and the vial was placed in a heated oil bath at 75 °C for 24 h. After the completion of polymerization reaction, the resulting polymer was then dried, crushed and grounded into powder. The obtained particles were treated with HCl aqueous solution to release the copper ions.<sup>30</sup> As shown in Scheme 2, the obvious change in the color from dark brown in unleached IIPs to light brown after the leaching process, can be attributed to the successful removal of  $\text{Cu}^{2+}$  ions from the polymeric matrix.<sup>31</sup> Finally, pH of the prepared sorbent was adjusted to neutral by several washing with double distilled water.

### 2.5. Preparation of unmodified and modified CPE

Unmodified CPEs were prepared by mixing 70 mg of graphite powder with 30 mg of paraffin oil with a mortar and pestle. Then, the mixture was filled into a syringe tube with a radius of 1.0 mm and compressed tightly to avoid the possible air gaps. A copper wire was inserted into the opposite end to establish an electrical contact. The external electrode surface was smoothed with soft paper. The Cu-IIP modified CPE was prepared by thorough mixing of graphite powder, paraffin oil, IIP and ionic additive in proportions of 61, 28, 10 and 1% (w/w), respectively.

### 2.6. Measurements of electromotive force (emf)

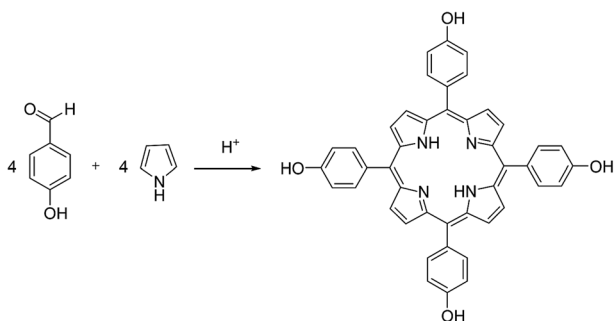
The emf measurements with the constructed CPEs were carried out with the following cell assemblies:



Sodium chloride solution was prepared and used as supporting electrolyte, to maintain constant ionic strength ( $\mu$ ). The performance of the electrodes was investigated by measuring the emfs of  $\text{Cu}^{2+}$  ion solutions (25 mL) in the range of  $1.0 \times 10^{-8}$  to  $5.0 \times 10^{-1} \text{ mol L}^{-1}$ , by serial dilution. In each solution, while stirring after reaching the equilibrium, calibration graphs were constructed by plotting the recorded potentials *vs.* logarithmic function of  $\text{Cu}^{2+}$  concentrations. The obtained graphs were then employed for the characterization of the slope and linear range of the CPEs and also subsequent determination of unknown amount of  $\text{Cu}^{2+}$  ion.

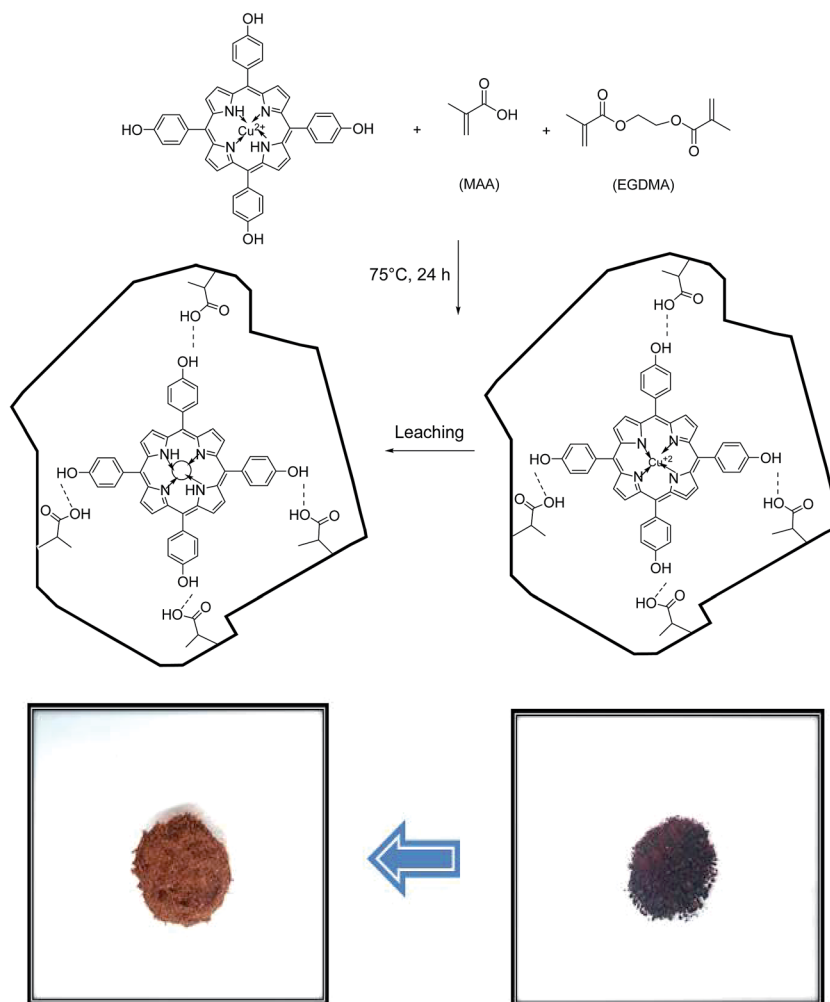
### 2.7. Selectivity of the designed CPE

The potentiometric selectivity of the sensor towards different inorganic cations was evaluated by applying the separate



Scheme 1 Schematic representation of the synthesis of THPP.





Scheme 2 Schematic representation of the synthesis of copper ion imprinted polymer.

solution method (SSM) (using 0.001 mol L<sup>-1</sup> of Cu<sup>2+</sup> ion solutions and interfering ions) and also fixed interference method (FIM) (using 0.001 mol L<sup>-1</sup> of interfering ions and varying amount of Cu<sup>2+</sup> ion).<sup>32</sup>

### 3. Results and discussion

#### 3.1. Characterization of the prepared copper ion imprinted polymers

Characterization of the prepared porphyrin-based Cu-IIP was performed by various techniques such as colorimetry, FT-IR and SEM. As it is obvious from Fig. 1, IR spectra of leached and unleached sample show similar pattern; which it referred to the similarity in their polymeric backbones and stability of the polymeric network during the acid washing process.<sup>21</sup> Consequently, it can be concluded that THPP is held in the polymer structure, even after leaching process. Moreover, the absorption bands located at around 950, 1500–1700 and 3400–3600 cm<sup>-1</sup> probably related to the stretching vibrations of C–N, C=C in the benzene aromatic ring and free –OH groups, respectively. Beside, the slight shifts from 1257, 1725 and 2952 cm<sup>-1</sup> (in unleached sample) to 1260, 1729 and 2956 cm<sup>-1</sup> (in leached

sample) was observed after removal of Cu<sup>2+</sup> ion from the unleached sample. The similar shifts in IR results after removal of the imprinted ion from the polymeric network were reported, previously.<sup>33,34</sup>

Fig. 2 shows SEM image of the Cu-IIP particles prepared by thermal polymerization method, which reveals the approximate particle size and the morphological structure characterization of the IIP particles.<sup>33</sup> As demonstrated, the prepared IIP particles are in nano-scaled size with average particle size of 57 nm, with slightly irregular in shape. The observed aggregations and irregularity in the particles are usually due to the synthetic method, grinding and sieving steps; which gave irregular particles with different sizes.<sup>34</sup>

#### 3.2. Potentiometric assay of copper ion by the IIP modified CPE

**3.2.1. Optimization of the CPE components.** It is well known that the composition of the paste in preparing CPEs has a significant role in the response characteristics of sensor such as sensitivity, response time, selectivity, Nernstian slope, life time and chemical stability of the sensor. Beside the critical role of paste composition, the influence of possible affecting



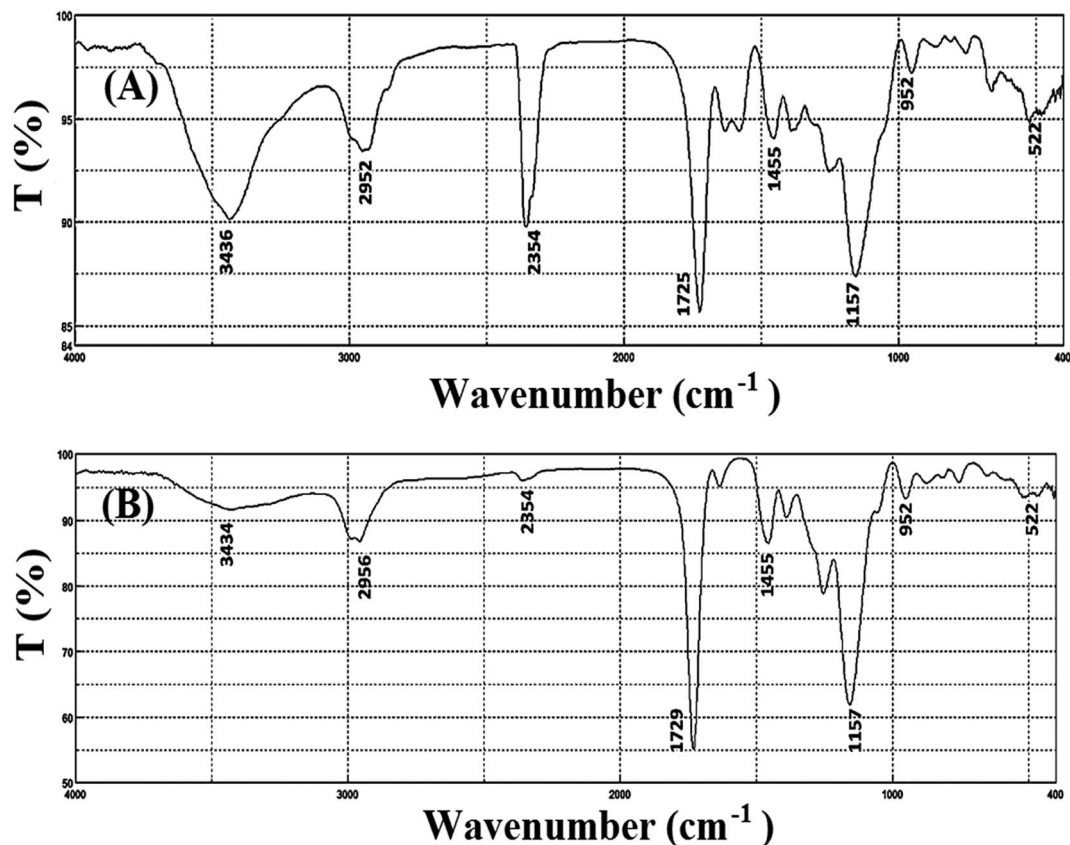


Fig. 1 FT-IR spectra of the (A) unleached and (B) leached ion imprinted polymers.

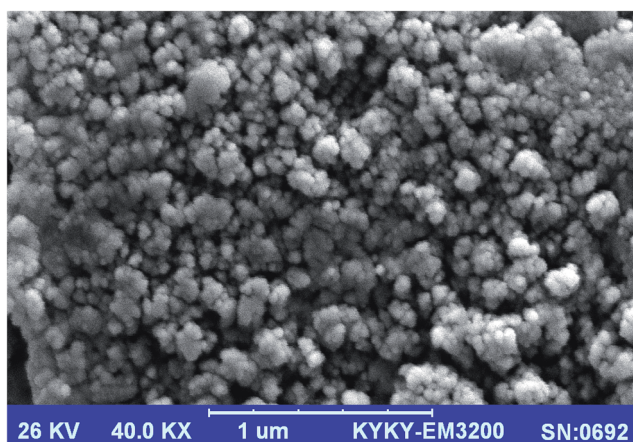


Fig. 2 SEM image of the prepared Cu-IIP particles.

parameters on the electrode response including amount of graphite, solvent mediator, modifier, additives was studied and optimized. In Table 1, the effect of different parameters on the electrode response such as slope, concentration linear range and regression coefficient in potentiometric determination of  $\text{Cu}^{2+}$  ion was summarized.

The blank electrode without the modifier (*i.e.* Cu-IIP NPs) showed poor response characteristics toward  $\text{Cu}^{2+}$  ion (sensor no. 1). The electrode showed remarkable sensitivity for  $\text{Cu}^{2+}$  ion

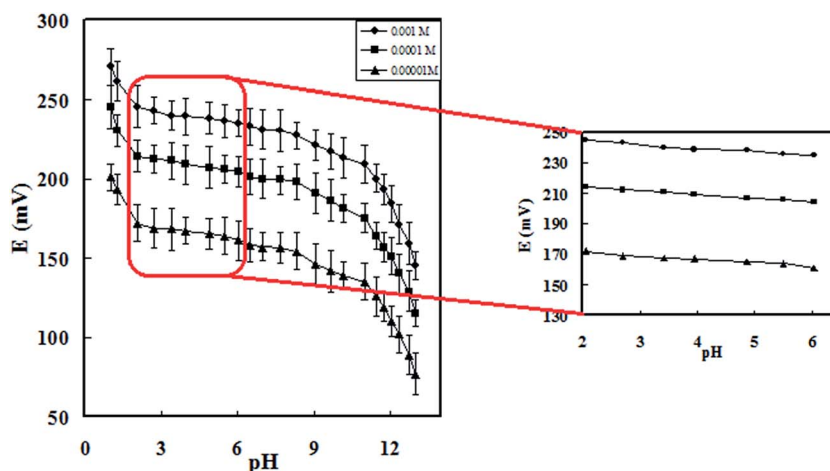
in the presence of Cu-IIP NPs. As obtained, linearity of the electrode improved by increasing the amount of Cu-IIP NPs until 10 wt%. Lowering the IIP content in the electrode composition decreased the sensor response characteristics. It may be arise from the lack of required recognition sites in the electrode surface.<sup>34</sup> Meanwhile, by using more amounts of Cu-IIP NPs in the paste content (*i.e.* sensor no. 7), sensitivity and slope of the electrode decreased. It may be due to change in homogeneity and/or conductivity in the paste composition as well as possible saturation of the paste.<sup>35</sup> The presence of ionic additive (*i.e.* NaTPB) had a beneficial influence on the performance characteristics of the CPE, which addition of 1% NaTPB increases the slope of the sensor from a poor value to a Nernstian value. The presence of anionic additives in the paste composition by reduction the ohmic resistance can improve the exchange kinetics, response time and selectivity of the electrodes.<sup>36</sup> As shown in Table 1, the Cu-IIP modified CPE with graphite power/paraffin oil/IIP/additive percentage ratio of 61 : 28 : 10 : 1.0 exhibited the maximum sensitivity and linearity ( $4.0 \times 10^{-9}$  to  $2.0 \times 10^{-1}$  M) with an excellent Nernstian slope of 30.15 mV per decade. Thus, the composition of electrode no. 6 was selected as the optimum electrode composition for other experiments. In addition, some control experiments by using NIP in the paste content were established for copper determination. The results show that the NIP-based sensor offers a concentration linear range from  $10^{-6}$  to  $10^{-1}$  M;





Table 1 Optimization of the carbon paste ingredients

No.	Graphite (mg)	IIP (mg)	Paraffin (mg)	Additive (mg)	Slope (mV per decade)	Concentration linear range (M)	$R^2$
1	70	—	30	—	24.1	$1 \times 10^{-6}$ to $5 \times 10^{-1}$	0.980
2	70	—	29	1	25.28	$1 \times 10^{-6}$ to $5 \times 10^{-1}$	0.985
3	65	4	30	1	27.1	$1 \times 10^{-6}$ to $5 \times 10^{-1}$	0.984
4	63	6	30	1	28.5	$1 \times 10^{-6}$ to $5 \times 10^{-1}$	0.980
5	63	8	28	1	33.5	$1 \times 10^{-6.5}$ to $1 \times 10^{-1}$	0.995
6	61	10	28	1	30.15	$4.0 \times 10^{-9}$ to $2.0 \times 10^{-1}$	0.997
7	59	12	28	1	26.83	$1 \times 10^{-5}$ to $5 \times 10^{-1}$	0.981

Fig. 3 Effect of pH on the response of the modified electrode ( $\mu = 0.10$ ; NaCl).

however, the selectivity of the sensor for copper in the presence of other cations was declined, significantly (Fig. S1†).

**3.2.2. Effect of pH.** The pH influence on the potentiometric response of the IIP modified CPE is tested at  $1.0 \times 10^{-3}$ ,  $1.0 \times 10^{-4}$ , and  $1.0 \times 10^{-5}$  mol L $^{-1}$  of Cu $^{2+}$  ions over the pH range of 1.0–13.0. The pH values are adjusted by adding small volumes of diluted nitric acid or sodium hydroxide solutions. The acceptable variation in potential was defined as  $\Delta E_{\text{observed}} < \pm 5\%$  ( $n = 3$ ), which the electrodes was independent from pH over the range of 2.0–6.0 (Fig. 3). At pH lower than 2.0, a strong competition between H $_3$ O $^{+}$  and Cu $^{2+}$  ions for occupying the binding sites in the IIP was happened;<sup>37</sup> consequently, the pH independent behavior of the electrode was not observed at strong acidic values. On the other hand, the sharp change in the observed potential at pH > 6.0 may be a result of decline in the concentration of free Cu $^{2+}$  ions due to the hydrolysis of Cu $^{2+}$  ions at the studied conditions.<sup>38</sup>

**3.2.3. Effect of ionic strength on the electrode response.** The effect of ionic strength (0.01–0.5 mol L $^{-1}$  NaCl) on the calibration curve of copper CPE was investigated. The electrode response was changed within the 0.01–0.5 mol L $^{-1}$  NaCl electrolyte solution. As obtained, the electrode response has a Nernstian slope in the  $\mu = 0.1$ . So, 0.1 mol L $^{-1}$  of NaCl was chosen as optimum salt concentration for all experiments, since in this ionic strength the linear range was wider than other concentrations.

**3.2.4. Response characteristics of the IIP modified CPE: response time, selectivity and thermal stability.** Generally, rapid response in different concentrations is an important factor for the evaluation of an ion selective electrode. The response time was obtained by potential measuring a series of Cu $^{2+}$  ion

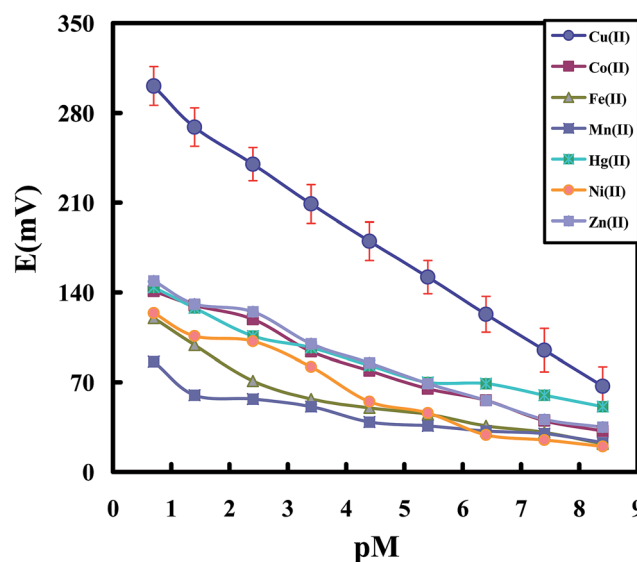


Fig. 4 Potentiometric response of the Cu-IIP modified CPE toward various cations under optimum conditions.



solutions from  $1.0 \times 10^{-5}$  to  $5.0 \times 10^{-1}$  mol L<sup>-1</sup> (Fig. S2†). The electrode reaches the equilibrium response in a reasonable time of 5 s, in the tested concentrations.

Fig. 4 shows the potential responses of the chemically modified CPEs toward different transition metal ions including Co<sup>2+</sup>, Fe<sup>2+</sup>, Mn<sup>2+</sup>, Hg<sup>2+</sup>, Ni<sup>2+</sup> and Zn<sup>2+</sup> ions at optimum conditions. As it is clear from the results, the modified electrode shows an acceptable response toward Cu<sup>2+</sup> ions over other metal ions with the similar charge and size. Thus, it can be hoped that the constructed sensor act as a promising sensor for selective and sensitive determination of Cu<sup>2+</sup> ions in the presence of other transition and heavy metal ions in different

matrices. By considering Fig. 4, limit of detection was obtained from extrapolation of the linear region of the calibration curve to the base-line potential. Test solutions were maintained at ionic strength of 0.1 with NaCl and the pH value was maintained at 4.5. The modified sensor exhibited linear response to the logarithm of the Cu<sup>2+</sup> ions concentration (pCu<sup>2+</sup>) within the concentration range of  $4.0 \times 10^{-9}$  to  $2.0 \times 10^{-1}$  mol L<sup>-1</sup> with a low detection limit of  $2.0 \times 10^{-9}$  mol L<sup>-1</sup>.

To investigate temperature effect on response characteristics of the modified sensor, calibration curve ( $E_{\text{cell}}$  vs.  $-\log[\text{Cu}^{2+}]$ ) were constructed at temperature range of 15–45 °C (Table S1†). As obtained, the electrode exhibits good Nernstian behavior

**Table 2** Comparison between selectivity results of the Cu-IIP modified CPE and other reported Cu<sup>2+</sup> CPEs<sup>a</sup>

Selectivity coefficients						Selectivity method	Ref.
Co <sup>2+</sup>	Mn <sup>2+</sup>	Zn <sup>2+</sup>	Fe <sup>2+</sup>	Pb <sup>2+</sup>	Hg <sup>2+</sup>		
$8.50 \times 10^{-5}$	—	$2.78 \times 10^{-4}$	—	$3.60 \times 10^{-5}$	$1.33 \times 10^{-4}$	FIM	12
$2.60 \times 10^{-3}$	—	$5.30 \times 10^{-3}$	$3.7 \times 10^{-3}$	$9.10 \times 10^{-3}$	$1.60 \times 10^{-3}$	SSM	40
$1.26 \times 10^{-3}$	$1.00 \times 10^{-4}$	$5.01 \times 10^{-3}$	—	$7.94 \times 10^{-3}$	$1.26 \times 10^{-4}$	FIM	41
$3.12 \times 10^{-3}$	—	$2.19 \times 10^{-4}$	—	$5.92 \times 10^{-3}$	—	MPM and SSM	42
$3.32 \times 10^{-5}$	—	$8.42 \times 10^{-7}$	—	$8.83 \times 10^{-5}$	—	—	—
$4.41 \times 10^{-3}$	—	$4.24 \times 10^{-3}$	—	$3.10 \times 10^{-3}$	$7.13 \times 10^{-2}$	MPM	43
2.8	—	2.3	—	1.8	0.8	FIM	44
—	—	$2.82 \times 10^{-1}$	—	0.25	—	SSM	45
—	—	$1.97 \times 10^{-1}$	—	$7.31 \times 10^{-4}$	$1.25 \times 10^{-4}$	MPM and FIM	46
—	—	$7.80 \times 10^{-2}$	—	$7.11 \times 10^{-4}$	$6.27 \times 10^{-4}$	—	—
$2.39 \times 10^{-4}$	$8.54 \times 10^{-6}$	$2.17 \times 10^{-3}$	—	$3.03 \times 10^{-5}$	$8.58 \times 10^{-5}$	MPM	47
2.57, 3.43	—	2.90, 3.30	—	1.40, 2.74	—	SSM and FIM	48
—	$1.30 \times 10^{-3}$	$1.10 \times 10^{-4}$	—	$3.30 \times 10^{-4}$	—	MPM	49
$1.32 \times 10^{-4}$	$6.02 \times 10^{-4}$	$3.16 \times 10^{-4}$	$7.24 \times 10^{-3}$	$1.41 \times 10^{-4}$	$5.01 \times 10^{-3}$	SSM and FIM	This work
$1.00 \times 10^{-4}$	$7.76 \times 10^{-4}$	$1.58 \times 10^{-4}$	$6.31 \times 10^{-3}$	$2.00 \times 10^{-4}$	$6.31 \times 10^{-3}$	—	—

<sup>a</sup> Abbreviations: FIM: fixed interference method; MPM: matched potential method; SSM: separate solution method.

**Table 3** Comparison of the response characteristics of Cu<sup>2+</sup> ion-CPEs<sup>a</sup>

No.	Ionophore	Slope (mV per decade of concentration)	Concentration linear range (mol L <sup>-1</sup> )	Response time (s)	Detection limit (mol L <sup>-1</sup> )	Working pH	RSD (%)	Ref.
1	DTPT	30.0	$9.8 \times 10^{-7}$ to $7.6 \times 10^{-2}$	45	$7.0 \times 10^{-7}$	1.0–5.5	—	12
2	L1	29.7	$1.0 \times 10^{-8}$ to $1.0 \times 10^{-1}$	<22	$9.1 \times 10^{-9}$	2.7–6.2	—	38
3	MMNIT	31.0	$7.9 \times 10^{-9}$ to $3.2 \times 10^{-2}$	5	$3.5 \times 10^{-9}$	2.0–5.5	—	39
4	Polysiloxane	29.4	$2.3 \times 10^{-7}$ to $1.0 \times 10^{-3}$	8	$2.7 \times 10^{-8}$	2.3–5.4	<3%	40
5	Etioporphyrin	30.3	$1.3 \times 10^{-6}$ to $1.3 \times 10^{-2}$	5	$9.0 \times 10^{-7}$	4.5–8.5	<1%	41
6	MO8HQ	30.0	$1.0 \times 10^{-5}$ to $1.0 \times 10^{-1}$	15	$6.3 \times 10^{-6}$	4.0–7.0	—	42
7	MWCNT	28.4	$1.0 \times 10^{-6}$ to $1.0 \times 10^{-2}$	1.05	$1.1 \times 10^{-6}$	3.0–5.5	—	43
8	β-CD	28.9	$3.1 \times 10^{-7}$ to $1.0 \times 10^{-2}$	9	$3.1 \times 10^{-7}$	3.5–7.0	—	44
9	Phen:TPB	29.4	$1.0 \times 10^{-6}$ to $1.0 \times 10^{-2}$	8–11	$1.0 \times 10^{-6}$	3.8–5.0	—	45
10	MMSPIP–MWCNTs	29.5	$4.1 \times 10^{-8}$ to $1.0 \times 10^{-2}$	20	$1.6 \times 10^{-8}$	3.5–5.5	<1%	46
11	L2	29.3	$1.0 \times 10^{-6}$ to $1.0 \times 10^{-1}$	15	$7.9 \times 10^{-7}$	2.0–9.0	—	47
12	Cu-IIP	30.2	$4.0 \times 10^{-9}$ to $2.0 \times 10^{-1}$	5	$2.0 \times 10^{-9}$	2.0–6.0	1%	This work

<sup>a</sup> Abbreviations: (1) 3,4-dihydro-4,4,6-trimethyl-2(1H)-pyrimidinethione, (2) 5,6,7,8,9,10-hexahydro-2H-1,13,4,7,10-benzodioxatriazacyclopentadecine-3,11(4H,12H)-dion, (3) multiwalled carbon nanotube-2-((3silylpropylaminoethylimino) methyl)phenol, (4) [2-mercapto-5-(1-methyl-5-nitroimidazole-2-yl)-1,3,4-thiadiazole], (5) 1,3,5-tris(8-quinolinoxymethyl)-2,4,6-trimethylbenzene, (6) multi walled carbon nanotubes, (7) β-cyclodextrin, (8) phenanthroline-tetraphenyl borate, (9) 2-methoxy-6-(((3-(trimethoxysilyl)propyl)imino) methyl) phenol chemically bonded to multiwalled carbon nanotubes, (10) 3-(2-methyl-2,3-dihydrobenzothiazol-2-yl)-2H-chromen-2-one.



over the studied temperature range with high thermal stability, so that the electrode was usable up to 45 °C. The observed deviation from the Nernstian behavior of the sensors over the applied temperature may be attributed the change in the diffusion coefficient of the ion as well as possible bleeding of the paste components at high temperature.<sup>39</sup>

### 3.3. Life time, repeatability and reproducibility

In life time studies, repeated monitoring of potentials and calibration over several days gave good slope, linearity, and correlation coefficient. The IIP modified CPE can be used for, at least, two months without any measurable divergence (Table S2†). The electrode was kept in buffer solution with pH 5.0–7.0 to avoid drying, cracking and poisoning when it was not in use. To evaluate the reproducibility of this electrode, five electrodes with the same composition were constructed and their responses were recorded, at optimum conditions. According to the calculated standard deviation corresponded to the  $\text{Cu}^{2+}$  solution ( $0.59$ ,  $n = 5$ ) difference in response of the electrodes were not significant. The electrodes showed acceptable response with the average slope of 29.85 mV per decade and linearity of  $4.0 \times 10^{-9}$  to  $5.0 \times 10^{-1} \text{ mol L}^{-1}$  (Table S3†). In addition, for repeatability study, the standard deviations of 5 replicate measurements with one paste electrode were measured. According to the results (Table S4†), the modified electrode showed good repeatability with the average slope of 29.80 mV and average correlation coefficient of 0.992 at the concentration range between  $4.0 \times 10^{-9}$  and  $5.0 \times 10^{-1} \text{ mol L}^{-1}$  of  $\text{Cu}^{2+}$  ion with a low standard deviation of 0.44.

### 3.4. Selectivity coefficient and comparison

To calculate the selectivity coefficient of the modified CPE toward  $\text{Cu}^{2+}$  ions over other cations, SSM ( $0.001 \text{ mol L}^{-1}$  of  $\text{Cu}^{2+}$  ion solutions and interfering ions) and FIM ( $0.001 \text{ mol L}^{-1}$  of interfering ions and varying concentration of  $\text{Cu}^{2+}$  ion) were used as the two recommended methods for studying influence of interferences ions in ion selective electrodes by IUPAC.<sup>32</sup> In this study, some cations including  $\text{Co}^{2+}$ ,  $\text{Zn}^{2+}$ ,  $\text{Hg}^{2+}$ ,  $\text{Pb}^{2+}$ ,  $\text{Mn}^{2+}$ , and  $\text{Fe}^{2+}$  were chosen as possible interferences for selectivity study. The selectivity coefficients found by SSM and FIM are listed in Table 2. It is obvious that the proposed  $\text{Cu}^{2+}$  sensor is highly selective with respect to the most of cations. The surprisingly high selectivity of the designed CPE modified with

IIP for copper ions over other cations most probably arises from the strong tendency of the IIP carrier for copper ions. Moreover, by considering the selectivity coefficients, most of the tested ions do not have significant effect on the response of the modified electrode. Meanwhile, comparison of the calculated selectivity coefficients with other reports<sup>12,40–49</sup> for the same metal ions clearly indicate that the selectivity of the designed sensor is comparable with others and the ions showed a negligible interference in the performance of the sensor.

The reported data in Table 3 give a comparison between some important characteristics of the modified electrode with

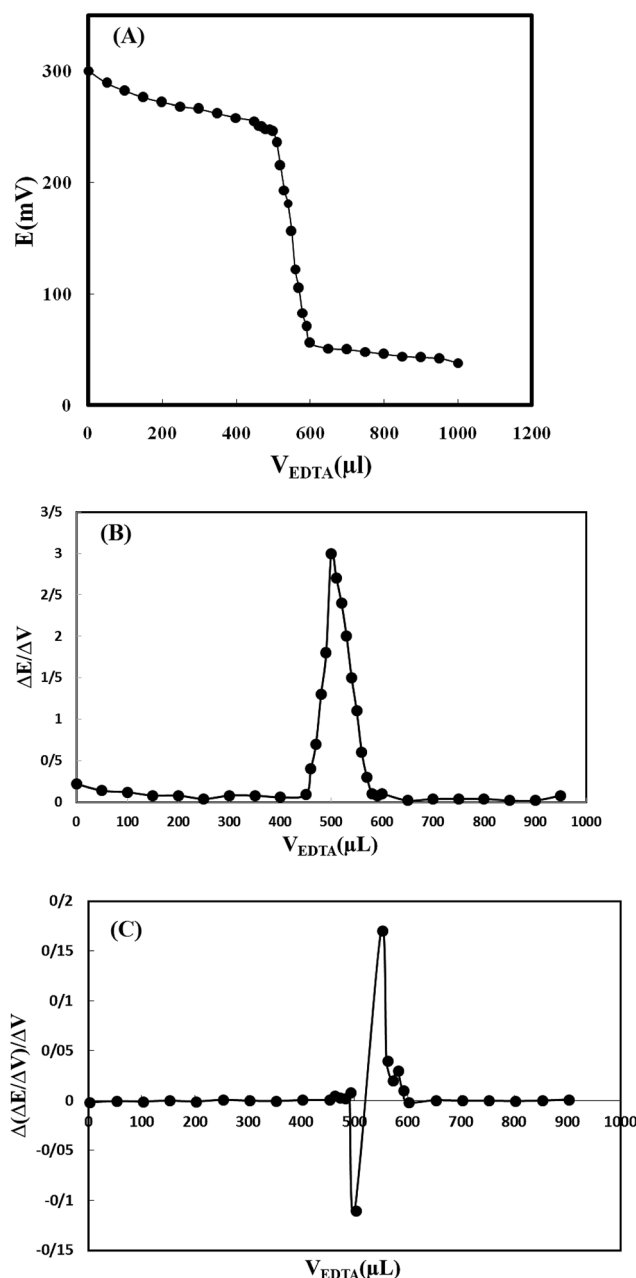


Fig. 5 (A) Potentiometric titration curve of 50.0 mL of  $5.0 \times 10^{-4} \text{ mol L}^{-1} \text{ Cu}(\text{NO}_3)_2$  solution with  $5.0 \times 10^{-2} \text{ mol L}^{-1} \text{ EDTA}$ , using IIP based CPE as indicator electrode, (B) its first and (C) second derivatives curves ( $\text{pH} = 4.5$ ,  $\mu = 0.10$ ;  $\text{NaCl}$ ).

Table 4 Results of the potentiometric determination of copper ion in water samples

Sample	Added ( $\text{mol L}^{-1}$ )	Found ( $\text{mol L}^{-1}$ )	Recovery (%)	RSD (%)
Tap water	0.00	$0.005 \times 10^{-5}$	—	0.80
	$1.0 \times 10^{-5}$	$1.01 \times 10^{-5}$	101.0	1.10
	$1.0 \times 10^{-4}$	$1.03 \times 10^{-4}$	103.0	1.40
River water	0.00	$0.078 \times 10^{-5}$	—	0.50
	$1.0 \times 10^{-5}$	$1.06 \times 10^{-5}$	106.0	1.05
	$1.0 \times 10^{-4}$	$1.00 \times 10^{-4}$	100.0	0.60



previously reported ones with respect to slope, response time, pH, linear range and detection limit.<sup>12,40–49</sup> It is noteworthy that the selectivity coefficients, linear range, slope and response time of the proposed electrodes are considerably improved with respect to those of the previously reported Cu<sup>2+</sup> ion selective electrodes (Table 3). By considering Tables 2, 3 and Fig. 4; it can be concluded that the modified electrode was superior in comparison with the previously reported Cu<sup>2+</sup> sensors as its linear range, Nernstian slope and detection limit.

### 3.5. Practical applications for water analysis and as indicator electrode

For testing the sensor for practical application in aqueous media, it was used for determination of copper in different water samples. The water samples including mineral water, tap water (from Yasouj University Lab) and Beshar river water (from Boyer-Ahmad location) were collected and prepared according to literature.<sup>39,48</sup> The results are illustrated in Table 4. The results (RSD% ~ 1%, recovery ranges of 100.0–106.3%) reveal that the constructed sensor works well under laboratory conditions.

Moreover, in order to test the modified electrode in different applications; it was also used as an indicator electrode for determination of copper content in a typical titration of Cu<sup>2+</sup> and EDTA solutions. For this purpose, 50 mL of Cu<sup>2+</sup> solution ( $5.0 \times 10^{-4}$  mol L<sup>-1</sup>) was titrated potentiometrically, against  $5.0 \times 10^{-2}$  mol L<sup>-1</sup> EDTA solutions using the electrode as an indicator electrode. The results indicated that the amount of copper ion can be accurately determined with the modified electrode (Fig. 5). The first and second order derivation titration curves were also plotted and the average titration error was calculated to be 3.0%.

## 4. Conclusion

In summary, a selective Cu-IIP NPs base on 5,10,15,20-tetrakis(4-hydroxyphenyl)porphyrin (THPP) was synthesized for recognition of Cu<sup>2+</sup> ion in aqueous solutions. The IIP was successfully used as a copper recognition element in carbon paste electrode. The modified electrode by Cu-IIP NPs showed a short response time (~5 s), Nernstian slope (~30 mV per decade), wide linear range and low detection limit. As compared, in some cases, this sensor was improved the electrode characteristics and has better figures of merit than others (Table 4). Moreover, simple construction, high precision, good thermal stability, long life time and reasonable applicability of the sensor for water analysis were some advantages of the modified sensor. Briefly, comparison between the sensor characteristics with those of the previously reported ones clearly shows that the proposed sensor can be categorized as an efficient copper sensor. Meanwhile, the short response time, good linearity, sensitivity and selectivity of the designed nano-sized IIP based-CPE make it as a potential sensor for on-line flow electrochemical analysis purposes in different environmental and biological real samples with various matrices.

## References

- 1 D. G. Barceloux, *J. Clin. Toxicol.*, 1999, **37**, 217–230.

- 2 B. Jankiewicz, B. Ptasiński and A. Turek, *Pol. J. Environ. Stud.*, 1999, **8**, 35–38.
- 3 Z. M. Grahovac, S. S. Miti and E. T. Pecev, *J. Serb. Chem. Soc.*, 2003, **68**, 219–226.
- 4 M. H. Mashhadizadeh, M. Amoli-Diva, M. R. Shapouri and H. Afruzi, *Food Chem.*, 2014, **151**, 300–305.
- 5 M. Behbahani, J. Abolhasani, M. M. Amini, O. Sadeghi, F. Omid, A. Bagheri and M. Salarian, *Food Chem.*, 2015, **173**, 1207–1212.
- 6 R. A. Nalawade, A. M. Nalawade, G. S. Kamble and M. A. Anuse, *Spectrochim. Acta, Part A*, 2015, **146**, 297–306.
- 7 U. Baig and A. A. Khan, *J. Ind. Eng. Chem.*, 2015, **29**, 392–399.
- 8 M. C. Bruzzoniti, R. M. De Carlo, C. Sarzanini, R. Maina and V. Tumiatti, *Talanta*, 2012, **99**, 703–711.
- 9 M. H. Sorouraddin, J. L. Manzoori and M. Iranifam, *Talanta*, 2005, **66**, 1117–1121.
- 10 M. B. Gholivand and A. A. Romiani, *Anal. Chim. Acta*, 2006, **571**, 99–104.
- 11 H. Abdollahi, M. Shamsipur and A. Barati, *Spectrochim. Acta, Part A*, 2014, **127**, 137–143.
- 12 A. Abbaspour and S. M. M. Moosavi, *Talanta*, 2002, **56**, 91–96.
- 13 K. Vytrās, I. Švancara and R. Metelka, *J. Serb. Chem. Soc.*, 2009, **74**, 1021–1033.
- 14 H. R. Rajabi, M. Roushani and M. Shamsipur, *J. Electroanal. Chem.*, 2013, **693**, 16–22.
- 15 M. B. Gholivand, M. Shamsipur, S. Dehdashtian and H. R. Rajabi, *Mater. Sci. Eng., C*, 2014, **36**, 102–107.
- 16 H. R. Rajabi and S. Razmpour, *Spectrochim. Acta, Part A*, 2016, **153**, 45–52.
- 17 H. R. Rajabi, M. Shamsipur, M. M. Zahedi and M. Roushani, *Chem. Eng. J.*, 2015, **259**, 330–337.
- 18 V. Vatanpour, S. S. Madaeni, S. Zinadini and H. R. Rajabi, *J. Membr. Sci.*, 2011, **373**, 36–42.
- 19 M. Shamsipur and H. R. Rajabi, *Microchim. Acta*, 2013, **180**, 243–252.
- 20 H. Ashkenani and M. A. Taher, *J. Electroanal. Chem.*, 2012, **683**, 80–87.
- 21 D. K. Singh and S. Mishra, *Chromatographia*, 2009, **70**, 1539–1545.
- 22 S. Walas, A. Tobiasz, M. Gawin, B. Trzewik, M. Strojny and H. Mrowiec, *Talanta*, 2008, **76**, 96–101.
- 23 M. J. Kuras and E. Wieckowska, *Polym. Bull.*, 2015, **72**, 3227–3240.
- 24 M. Roushani, S. Abbasi and H. Khani, *Environ. Monit. Assess.*, 2015, **187**, 601–605.
- 25 M. A. Abu-Dalol, A. A. Salam and N. S. Nassory, *Int. J. Electrochem. Sci.*, 2015, **10**, 6780–6793.
- 26 R. Say, E. Birlik, A. u. Ersöz, F. Yılmaz, T. Gedikbey and A. Denizli, *Anal. Chim. Acta*, 2003, **480**, 251–258.
- 27 H. Ebrahimzadeh, M. Behbahani, Y. Yamini, L. Adlnasab and A. A. Asgharinezhad, *React. Funct. Polym.*, 2013, **73**, 23–29.
- 28 M. Shamsipur, J. Fasihi, A. Khanchi, R. Hassani, K. Alizadeh and H. Shamsipur, *Anal. Chim. Acta*, 2007, **599**, 294–301.
- 29 Z. Jing, G. Yang, C. Shaokui, Z. Wennan, W. Dongmei, C. Huifang and L. Tianxuan, *Chem. Mag. Org.*, 2002, **8**, 39–42.





- 30 H. R. Rajabi, M. Shamsipur and S. M. Pourmortazavi, *Mater. Sci. Eng., C*, 2013, **33**, 3374–3381.
- 31 M. Shamsipur, H. R. Rajabi, S. M. Pourmortazavi and M. Roushani, *Spectrochim. Acta, Part A*, 2014, **117**, 24–33.
- 32 G. G. Guilbault, R. A. Durst, M. S. Frant, H. Freiser, E. H. Hansen, T. S. Light, E. Pungor, G. Rechnitz, N. M. Rice, T. J. Rohm, W. Simon and J. D. R. Thomas, *Pure Appl. Chem.*, 1976, **48**, 127–132.
- 33 M. A. Abu-Dalo, A. A. Salam and N. S. Nassory, *Int. J. Electrochem. Sci.*, 2015, **10**, 6780–6793.
- 34 F. Luo, S. Huang, X. Xiong and X. Lai, *RSC Adv.*, 2015, **5**, 67365–67371.
- 35 K. Yoshimatsu, K. Reimhult, A. Krozer, K. Mosbach, K. Sode and L. Ye, *Anal. Chim. Acta*, 2007, **584**, 112–121.
- 36 M. Shamsipur, M. Hosseini, K. Alizadeh, M. M. Eskandari, H. Sharghi, M. F. Mousavi and M. R. Ganjali, *Anal. Chim. Acta*, 2003, **486**, 93–99.
- 37 M. Shamsipur, M. Javanbakht, M. F. Mousavi, M. R. Ganjali, V. Lippolis, A. Garau and L. Tei, *Talanta*, 2001, **55**, 1047–1054.
- 38 M. H. Mashhadizadeh, A. Mostafavi, R. Razavi and M. Shamsipur, *Sens. Actuators, B*, 2002, **86**, 222–228.
- 39 A. Shokrollahi, M. Ghaedi, H. R. Rajabi and A. H. Kianfar, *Chin. J. Chem.*, 2009, **27**, 258–266.
- 40 M. Shamsipur, F. Mizani, A. A. Saboury, H. Sharghi and R. Khalifeh, *Electroanalysis*, 2007, **19**, 587–596.
- 41 M. H. Mashhadizadeh, K. Eskandari, A. Foroumadi and A. Shafiee, *Talanta*, 2008, **76**, 497–502.
- 42 H. M. Abu-Shawish, S. M. Saadeh and A. R. Hussien, *Talanta*, 2008, **76**, 941–948.
- 43 Y. M. Issa, H. Ibrahim and O. R. Shehab, *J. Electroanal. Chem.*, 2012, **666**, 11–18.
- 44 S. K. Mittal, A. Kumar, N. Gupta, S. Kaur and S. Kumar, *Anal. Chim. Acta*, 2007, **585**, 161–170.
- 45 M. Soleimani and M. G. Afshar, *Int. J. Electrochem. Sci.*, 2013, **8**, 8719–8729.
- 46 T. Awad Ali, A. M. Eldidamony, G. G. Mohamed and D. M. Elatfy, *Int. J. Electrochem. Sci.*, 2014, **9**, 2420–2434.
- 47 T. Awad Ali, G. G. Mohamed, M. M. I. El-Dessouky, S. M. Abou El-Ella and R. T. F. Mohamed, *J. Solution Chem.*, 2013, **42**, 1336–1354.
- 48 M. Ghaedi, S. Y. Shajaripour Jaber, S. Hajati, M. Montazerzohori, A. Asfaram, B. Mirtamizdoust and M. Zare, *IEEE Sens. J.*, 2015, **15**, 2882–2889.
- 49 M. R. Ganjali, S. Aghabalazadeh, M. Khoobi, A. Ramazani, A. Foroumadi, A. Shafiee and P. Norouzi, *Int. J. Electrochem. Sci.*, 2011, **6**, 52–62.

