

# On the interpretation of *in situ* HONO observations *via* photochemical steady state

Leigh R. Crilley,<sup>a</sup> Louisa Kramer,<sup>a</sup> Francis D. Pope,<sup>a</sup> Lisa K. Whalley,<sup>bd</sup> Danny R. Cryer,<sup>b</sup> Dwayne E. Heard,<sup>bd</sup> James D. Lee,<sup>cd</sup> Christopher Reed<sup>c</sup> and William J. Bloss<sup>\*a</sup>

Received 15th December 2015, Accepted 22nd January 2016

DOI: 10.1039/c5fd00224a

A substantial body of recent literature has shown that boundary layer HONO levels are higher than can be explained by simple, established gas-phase chemistry, to an extent that implies that additional HONO sources represent a major, or the dominant, precursor to OH radicals in such environments. This conclusion may be reached by analysis of point observations of (for example) OH, NO and HONO, alongside photochemical parameters; however both NO and HONO have non-negligible atmospheric lifetimes, so these approaches may be problematic if substantial spatial heterogeneity exists. We report a new dataset of HONO, NO<sub>x</sub> and HO<sub>x</sub> observations recorded at an urban background location, which support the existence of additional HONO sources as determined elsewhere. We qualitatively evaluate the possible impacts of local heterogeneity using a series of idealised numerical model simulations, building upon the work of Lee *et al.* (*J. Geophys. Res.*, 2013, DOI: 10.1002/2013JD020341). The simulations illustrate the time required for photostationary state approaches to yield accurate results following substantial perturbations in the HO<sub>x</sub>/NO<sub>x</sub>/NO<sub>y</sub> chemistry, and the scope for bias to an inferred HONO source from NO<sub>x</sub> and VOC emissions in either a positive or negative sense, depending upon the air mass age following emission. To assess the extent to which these impacts may be present in actual measurements, we present exploratory spatially resolved measurements of HONO and NO<sub>x</sub> abundance obtained using a mobile instrumented laboratory. Measurements of the spatial variability of HONO in urban, suburban and rural environments show pronounced changes in abundance are found in proximity to major roads within urban areas, indicating that photo-stationary steady state (PSS) analyses in such areas are likely to be problematic. The measurements also show areas of very homogeneous HONO and NO<sub>x</sub> abundance

<sup>a</sup>School of Geography, Earth & Environmental Sciences, University of Birmingham, UK. E-mail: w.j.bloss@bham.ac.uk

<sup>b</sup>School of Chemistry, University of Leeds, UK

<sup>c</sup>Wolfson Atmospheric Chemistry Laboratory, Department of Chemistry, University of York, UK

<sup>d</sup>National Centre for Atmospheric Science, UK



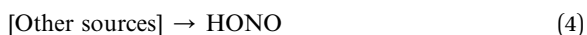
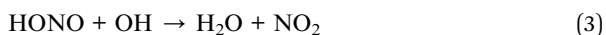
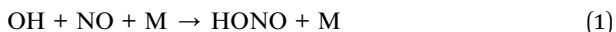
in rural, and some suburban, regions, where the PSS approach is likely to be valid. Implications for future exploration of HONO production mechanisms are discussed.

# 1 Introduction

Chemical processes affect atmospheric composition, leading to the removal of primary species, including many air pollutants, and the formation of secondary products. The hydroxyl radical (OH) is the principal gas-phase tropospheric oxidant, responsible for initiating the degradation of most volatile organic compounds (VOCs), including the greenhouse gas methane (CH<sub>4</sub>), and many nitrogen and sulphur species.<sup>1</sup> Products of OH-driven oxidation include pollutants such as ozone (O<sub>3</sub>), and secondary inorganic and organic aerosol, which affect human health and radiation transfer, hence climate. Consequently, quantitative knowledge of OH abundance – and hence OH sources – underpins understanding of atmospheric chemical processing.<sup>2</sup> This paper concerns understanding the gas-phase sources and cycling of OH in the troposphere, and specifically the role of nitrous acid (HONO) in the atmospheric boundary layer.

Basic OH-driven VOC oxidation involves interconversion of OH radicals and organic- and hydro-peroxy radicals, RO<sub>2</sub> and HO<sub>2</sub>, mediated by the abundance of nitrogen oxides (NO<sub>x</sub>). Within this radical cycling, we can distinguish between primary sources of OH, and of HO<sub>x</sub> (here, HO<sub>x</sub> = OH + HO<sub>2</sub> + RO<sub>2</sub>), and secondary sources of OH (which simply represent interconversion between OH, HO<sub>2</sub> and RO<sub>2</sub>). In the free troposphere, the dominant primary OH (and HO<sub>x</sub>) sources are the short-wavelength photolysis of ozone, followed by O(<sup>1</sup>D) reaction with water vapour; other primary sources of HO<sub>x</sub> include photolysis of carbonyl species and alkene–ozone reactions, while the predominant secondary source of OH in most tropospheric environments is reaction of HO<sub>2</sub> radicals with nitric oxide (NO).

Nitrous acid (HONO) can be considered to be both a primary source of OH, and a HO<sub>x</sub> (and NO<sub>x</sub>) reservoir: HONO is formed in the gas phase, through the termolecular reaction between OH radicals and NO (1), and the principal fate of HONO in the sunlit atmosphere is photolysis (2) to reform OH and NO; HONO photolysis frequencies reach *ca.*  $1.7 \times 10^{-3} \text{ s}^{-1}$  in the mid-latitude boundary layer (value for SZA = 40°). Reaction with OH (3) represents a further sink of HONO, but in most situations is a minor channel given the broadly photolysis-driven abundance of OH.<sup>3</sup> HONO chemistry as described through reactions (1) and (2) has no net effect upon HO<sub>x</sub> and NO<sub>x</sub> (once steady state is achieved); however additional HONO formation through other processes (4) will lead to additional, primary, net OH production.<sup>4</sup>



HONO was first detected in the atmosphere by Differential Optical Absorption Spectroscopy, DOAS.<sup>5</sup> Subsequently, HONO has been measured using a range of



direct and indirect approaches, including optical methods – open-path DOAS,<sup>6</sup> FTIR and various cavity approaches such as broadband cavity enhanced absorption spectroscopy,<sup>7</sup> wet chemical approaches,<sup>8–10</sup> and through applications of photo-fragmentation/laser induced fluorescence<sup>11</sup> and chemical ionisation mass spectrometry.<sup>12</sup> While technique equivalence remains a live issue,<sup>13</sup> the observations derived from modern instrumentation have highlighted that HONO is likely to play an important role in boundary layer (and potentially free troposphere) HO<sub>x</sub> and NO<sub>x</sub> chemistry.

The observed levels of HONO are such that it forms an important – sometimes dominant – component of the OH budget within the boundary layer (where air pollutants immediately impact upon health), *e.g.* accounting for 48–56% of OH production in New York City,<sup>14,15</sup> 33% of OH production in a deciduous forest near Jülich (Germany),<sup>16</sup> 35% of the OH source at a suburban site near Paris,<sup>17</sup> 80.4% of the OH source at a semi-rural site in Colorado<sup>18</sup> and 40% in central London.<sup>19</sup> We can identify two contrasting HONO formation mechanisms: within-atmosphere gas-phase HONO formation (with no net effect upon OH abundance) – through reaction (1), and other processes and heterogeneous formation and/or direct emissions (net HONO production, leading to increased OH – reaction (4)).

The existence of additional HONO sources, beyond reaction (1), was identified following the first observations of HONO by DOAS approaches<sup>5,6</sup> which showed HONO accumulation during nighttime and removal (by photolysis) during the day. Subsequent co-located observations of HONO, OH and NO have consistently found that additional HONO sources (*i.e.* reaction (4) in Fig. 1) are required to balance the *in situ* chemical HONO budget. The missing source strength is far from a minor correction: it has frequently exceeded the known (OH + NO) production by an order of magnitude. For example, in a European deciduous forest a missing source *ca.* 13-fold larger than OH + NO was identified;<sup>16</sup> at a rural site in southern China daytime HONO production exceeded known sources by a factor of 19.<sup>20</sup> Recent observations from the (highly homogeneous) SMEAR II Hyytiälä boreal forest site in Finland found that an additional HONO source, *ca.* 20–30 times larger than that predicted from OH + NO, was present.<sup>21</sup> In urban regions, with orders of magnitude higher NO<sub>x</sub> levels, HONO formation *via* OH + NO is much faster – however substantial additional HONO sources are still evident: 50% of HONO production was unaccounted for at a suburban Paris site;<sup>22</sup> and 40% was unaccounted for in Santiago, Chile.<sup>23</sup>

A number of candidate mechanisms have been proposed to account for the missing HONO production: formation from dark NO<sub>2</sub>–H<sub>2</sub>O interactions occurs upon a range of surfaces<sup>24,25</sup> but is thought to be smaller than the missing (daytime) source (*e.g.* accounting for only 4% of the deficit in Santiago<sup>23</sup>). Laboratory studies have shown that photoenhanced HONO production can occur following NO<sub>2</sub> uptake to surfaces including soot,<sup>26</sup> aromatic species,<sup>27</sup> humic acids<sup>28</sup> and TiO<sub>2</sub>.<sup>29</sup> Of these, photoenhanced NO<sub>2</sub>-to-HONO conversion upon organic films has been shown to occur at a rate that can potentially account for the missing HONO source. Surface-enhanced nitrate photolysis may contribute to HONO formation upon forest canopies<sup>30</sup> although the yield is poorly constrained. Both ground and aerosol surfaces may contribute to heterogeneous HONO production, although aerosol surface areas are generally smaller than the geometric ground surface area within a typical boundary layer, and observations (vertical profiles of HONO and aerosol surface area) have consistently shown that



the ground source dominates,<sup>31–34</sup> a conclusion supported by low HONO production observed in laboratory studies of NO<sub>2</sub>–soot interactions.<sup>35</sup> Other insights into HONO formation include new gas-phase chemistry, for example the recently proposed reaction between water-complexed HO<sub>2</sub> radicals, HO<sub>2</sub>·H<sub>2</sub>O, and NO<sub>2</sub><sup>36</sup> and direct emissions from soil bacteria<sup>37,38</sup> and biocrusts.<sup>39</sup>

The identity of the additional HONO sources is still the subject of much attention, and has been variously discussed in the reviews of (for example) Lammel & Cape,<sup>40</sup> Kleffman,<sup>4</sup> Spataro & Ianniello<sup>41</sup> and George *et al.*<sup>42</sup> The focus of this discussion paper is not to identify the source(s) responsible for the net HONO formation frequently observed in the field, but rather to explore the strengths – and limitations – of one method used to identify the magnitude and suggest the identity of additional HONO sources, including in a number of the studies cited above – the application of photostationary steady state to the HONO–OH–NO system.

## 2 Photostationary steady state

The photostationary steady state (PSS) is a simple application of basic chemical kinetics, in which application of the assumption of chemical equilibrium permits derivation of the relative concentrations of more reactive species in terms of the kinetic and photochemical reaction parameters governing their interchange with less reactive components.<sup>43</sup> The classical example of PSS in atmospheric chemistry is the simple NO<sub>x</sub>–O<sub>3</sub> or Leighton ratio:<sup>44</sup>



$$[\text{NO}_2]/[\text{NO}] = k_5[\text{O}_3]/j_6 \quad (\text{E1})$$

Deviations from the Leighton ratio arise from additional chemical processes (and have been used to infer, for example, RO<sub>2</sub> abundance and hence ozone production rates<sup>45</sup> and possible new chemistry<sup>46</sup>). Technically however, steady-state is never truly achieved – the concentrations are always relaxing towards equilibrium, on a timescale which may be characterised by the e-folding lifetime. In the case of the Leighton ratio PSS is a reasonable assumption for the sunlit atmosphere, where  $j_6$  is of the order of  $(5\text{--}10) \times 10^{-3} \text{ s}^{-1}$  (SZA 60–20°), and  $k_5[\text{O}_3]$  typically  $(5\text{--}50) \times 10^{-3} \text{ s}^{-1}$  (10–100 ppb O<sub>3</sub>; 298 K) – and reactions (5) and (6) are the dominant controls on NO<sub>x</sub> and O<sub>3</sub> abundance in most situations. The HONO PSS however displays more complex timescales. Neglecting additional sources (4):

$$[\text{HONO}] = k_1[\text{OH}][\text{NO}]/(j_2 + k_3[\text{OH}]) \quad (\text{E2})$$

however, the abundance of OH and NO is not dominated by reactions (1)–(3): the principal fate for OH in the boundary layer is reaction with VOCs/NO<sub>2</sub>, depending upon local conditions, and measured total OH reactivity ranges from 3–100 s<sup>−1</sup>, with the lowest possible reactivity of the order of 1 s<sup>−1</sup> (for remote background air where VOC reactivity is dominated by CH<sub>4</sub> and CO) – corresponding to an OH lifetime of 1 second or less. The lifetime of NO is dominated by the NO<sub>x</sub>–O<sub>3</sub> PSS, and is typically of the order of 50 seconds (40 ppb O<sub>3</sub>; 298 K), while the lifetime of



HONO is much longer: the photolysis frequency of  $2.04 \times 10^{-3} \text{ s}^{-1}$  at an SZA of  $40^\circ$  corresponds to an e-folding lifetime of 8.2 minutes – or more at higher SZA values. The photochemical lifetimes of the species within the HONO PSS thus range from <1 second to potentially tens of minutes.

Consequently, HONO levels observed at a given point in time reflect the integrated effect of reactions (1)–(3), and additional sources, over a period of at least several minutes of the air parcel history – a fetch over which OH and NO, with much shorter chemical lifetimes, may be highly variable depending upon local heterogeneity.

A number of studies have used point observations of HONO, OH and NO to infer the magnitude of additional HONO sources  $S$ :

$$S = \{[\text{HONO}]_{\text{obs}} \times (j_2 + k_3[\text{OH}])\} - k_1[\text{OH}][\text{NO}] \quad (\text{E3})$$

This approach is appropriate where the local environment is homogeneous and well mixed – for example remote ground based locations<sup>16,21</sup> or free tropospheric measurements<sup>36</sup> – but may be problematic for more heterogeneous boundary layer sites, where inappropriate application of eqn (E3) could lead to erroneous measures of additional HONO sources. A further frequently applied metric is the HONO/NO<sub>2</sub> (and HONO/NO<sub>x</sub>) ratio – considered a better conserved quantity than HONO in isolation given the interchange between them – but again potentially subject to bias in heterogeneous environments given the different chemical lifetimes of HONO, NO and NO<sub>2</sub>. It should be noted that eqn (E3) as presented here is the most simple representation of the dominant chemical terms in the HONO continuity equation; various studies have extended this to incorporate (for example) nitrophenol photolysis<sup>47</sup> and surface deposition of NO<sub>2</sub>.<sup>19</sup>

Here, we briefly evaluate the “additional” HONO source  $S$ , and HONO/NO<sub>2</sub> and HONO/NO<sub>x</sub> ratios, using a new set of field data from an urban background site. We then illustrate the errors in  $S$  and the HONO : NO<sub>x</sub> ratios which may arise from non-PSS situations using a range of simple illustrative box-model simulations, building upon the insights of Lee *et al.*,<sup>48</sup> and present new on-road spatially resolved measurements of HONO and NO<sub>x</sub> to investigate the likelihood of these effects being present in real-world, non-remote, continental boundary layer locations. The consequences for interpretation of *in situ* field data to infer missing atmospheric processes are discussed.

### 3 Field observations of HONO, OH and NO<sub>x</sub>

Field measurements were performed on the campus of the University of York (UK) for a four-week period in early summer (June) 2014, as part of the NERC-funded “Missing OH Reactivity” campaign. The measurement location is considered an urban background site, with light passenger car/LGV traffic around University access roads to the East and West of the site, and bordering farmland to the South-East. The University campus is located 3 km from York city centre (to the North-West), and 1.75 km from the nearest major road(s) (the A64 to the South-East). Measurements were made *ca.* 3.5 m above ground level, with instrument inlets co-located horizontally (within 2 m) and vertically (within 0.5 m).

OH radicals were measured by laser-induced fluorescence (LIF), using the Fluorescence Assay by Gas Expansion (FAGE) technique; full details of the



instrument and approach are given elsewhere.<sup>2,49,50</sup> OH was determined using the wavelength modulation methodology. NO and NO<sub>2</sub> were measured using chemiluminescence, with photolytic NO<sub>2</sub> conversion.<sup>51</sup> O<sub>3</sub> was measured using a conventional UV absorption monitor (TEI 49i). HONO was measured using a LOPAP (Long-Path Absorption Photometer) instrument.<sup>8</sup> Photolysis frequencies were determined using a calibrated spectral radiometer (Ocean Optics), alongside basic meteorological parameters.

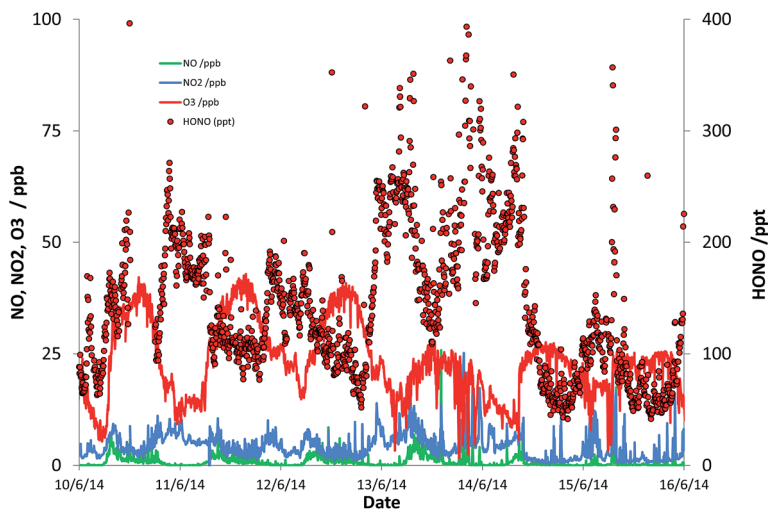


Fig. 1 (Subset of) measured NO, NO<sub>2</sub>, O<sub>3</sub> and HONO data at the University of York campus.

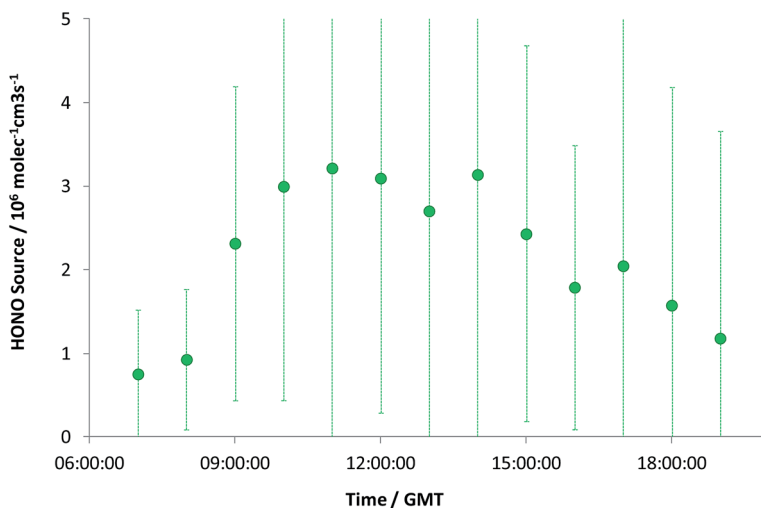


Fig. 2 Inferred additional HONO source, *S*, from York data – daytime data only. Errors are  $\pm 1$  standard deviation and represent precision only, derived from all measurement values within each hourly bin.



Fig. 1 presents a representative sub-set of the measured timeseries for NO, NO<sub>2</sub>, O<sub>3</sub> and HONO, to illustrate the typical conditions observed. NO<sub>x</sub> levels ranged between 0.48 and 45 ppb [mean 6.3 ppb; median 4.8 ppb]; HONO levels ranged between 33 ppt and 1.15 ppb [mean 190 ppt; median 156 ppt], while the mean daytime maximum OH concentration was  $2.2 \times 10^6$  molec cm<sup>-3</sup>. Descriptive statistics here and subsequently relate to the 2526, 15 minute observations for which all of OH, NO, HONO and photolysis frequencies were satisfactorily measured (*i.e.* excluding missing data); this represents 48% of all measurement times.

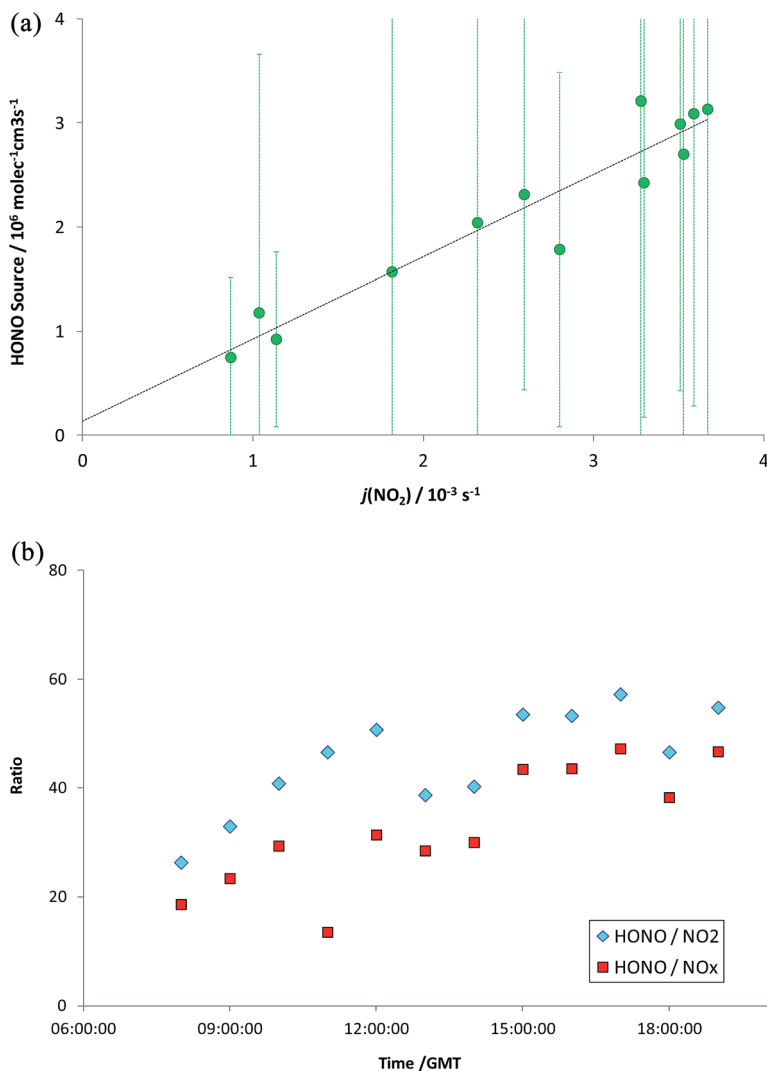


Fig. 3 (a) Variation in missing HONO source with NO<sub>2</sub> photolysis frequency,  $j\text{NO}_2$ . Error bars as for Fig. 2. (b) HONO/NO<sub>2</sub> and HONO/NO<sub>x</sub> ratios (hourly mean values).



The observed HONO levels were higher than simple steady-state eqn (E2) would predict, by a factor of 1.8 (median). Eqn (E3) was applied to derive the inferred additional HONO source, under the approximation/assumption of the validity of PSS – as noted above, this is the most simple treatment of HONO chemistry, and we stress this neglects (for example) mixing, HONO deposition and other “known” HONO sources such as nitrophenol photolysis – but these have been shown to be minor terms in the urban background HONO budget.<sup>19</sup> The resulting “missing HONO source” is shown in Fig. 2, and follows a clear diurnal profile, peaking at *ca.*  $3.2 \times 10^6$  molec cm<sup>-3</sup> s<sup>-1</sup> or approximately  $1.3 \times 10^{-4}$  ppb s<sup>-1</sup>. This value is comparable to that reported in similar locations recently (*e.g.* Michoud *et al.*:<sup>22</sup> suburban Paris,  $(0.7\text{--}1.9) \times 10^{-4}$  ppb s<sup>-1</sup>; Lee *et al.*:<sup>19</sup> North Kensington, London, August:  $2.5 \times 10^{-4}$  ppb s<sup>-1</sup>), although we note that a range of non-PSS sources (omission of which would increase the retrieved additional HONO production) were also considered in these studies.

The observed source is very strongly correlated with the NO<sub>2</sub> photolysis frequency ( $j_5$ ) as shown in Fig. 3a (although many photolysis parameters will follow a similar pattern). The hourly mean diurnal measured HONO/NO<sub>x</sub> and HONO/NO<sub>2</sub> ratios for daytime (here, defined as 07:00–20:00) are shown in Fig. 3b; the ratios averaged factors of 0.031 and 0.040 respectively. Interestingly, the mean ratios increase through the day, potentially indicating some degree of hysteresis. This is the opposite trend in behaviour to that expected for *e.g.* depletion of a surface HONO reservoir deposited during the night.<sup>52</sup>

Interpretation of the observationally-derived values of  $S$  and the HONO/NO<sub>2</sub> and HONO/NO<sub>x</sub> ratios presented above depends upon the assumption that HONO, OH and NO, HONO and NO<sub>2</sub>, or HONO and NO<sub>x</sub>, are in photostationary steady state. To qualitatively assess this assumption, we have performed a series of simple model simulations to illustrate the evolution of OH, NO<sub>x</sub>, HONO and hence  $S$  under a series of scenarios.

## 4 Illustrative model simulations

Model simulations were performed using a zero-dimensional box model, employing standard inorganic chemistry and oxidation of CO and CH<sub>4</sub> (only) as implemented in the Master Chemical Mechanism (MCM) v3.1.<sup>53,54</sup> The only HONO processes in this mechanism are reactions (1)–(3). The model was initiated with chemical conditions representative of a suburban background mid-latitude boundary layer airmass (CO = 200 ppb; CH<sub>4</sub> = 1850 ppb; O<sub>3</sub> = 40 ppb; NO<sub>x</sub> = 5 ppb – no initial HONO), and allowed to spin-up for a 1 hour period prior to the perturbations outlined below. For simplicity, photolysis frequencies were held constant, and correspond to those calculated for Birmingham (UK) at midday on 1 July (SZA = 30°). Temperature, pressure and RH were set to 293 K, 1 bar and 70% respectively. No mixing or deposition processes were considered – solely photochemical reactions and emissions as outlined below. Many aspects of this simulation are therefore highly simplified in comparison to any real world environment – but serve to illustrate the impacts of the HONO–NO<sub>x</sub>–OH system. In the discussion below, the following terminology is adopted:





HONO <sub>MODEL</sub>	The model-calculated HONO concentration – as would be measured in the atmosphere, if only reactions (1)–(4) affected HONO abundance
HONO <sub>PSS</sub>	The HONO concentration calculated using eqn (E2), from the modelled OH, NO and model $j_{\text{HONO}}$ values. This is equivalent to the value which would be derived from measured OH, NO and $j_{\text{HONO}}$ in the atmosphere, assuming PSS
Inferred source $S$	The “missing” HONO source calculated using eqn (E3), from the modelled OH, NO, HONO and model $j_{\text{HONO}}$ values – as would be derived from measured OH, NO, HONO and $j_{\text{HONO}}$ in atmospheric field measurements, assuming PSS

### Scenario 1

Scenario 1 represents an air mass arriving over a region of continuous HONO emissions – for example, a step change in soil emissions with different surface/vegetation type. A HONO source strength of  $1.1 \times 10^7$  molec cm<sup>-3</sup> s<sup>-1</sup> was used, equivalent to the soil bacterial emission inferred for wheat fields of 258 ng N m<sup>-2</sup> s<sup>-1</sup> as reported by Oswald *et al.* (2013),<sup>38</sup> in a well-mixed boundary layer height of 1000 m; the HONO source was turned on at  $t = 1$  hour and off again at  $t = 2.5$  hours (in reality, the daytime lifetime of HONO is insufficient for even mixing throughout a deep boundary layer). Fig. 4 shows the resulting time series of HONO<sub>MODEL</sub>, HONO<sub>PSS</sub> and the true (solid green line) and Inferred Source  $S$ , as a function of photolysis rates – for the base case, and increases/decreases in all photolysis frequencies of 50%.

Initially, HONO is zero within the model, and over the first 20 min of the simulation approaches steady state with OH and NO, as described by reactions

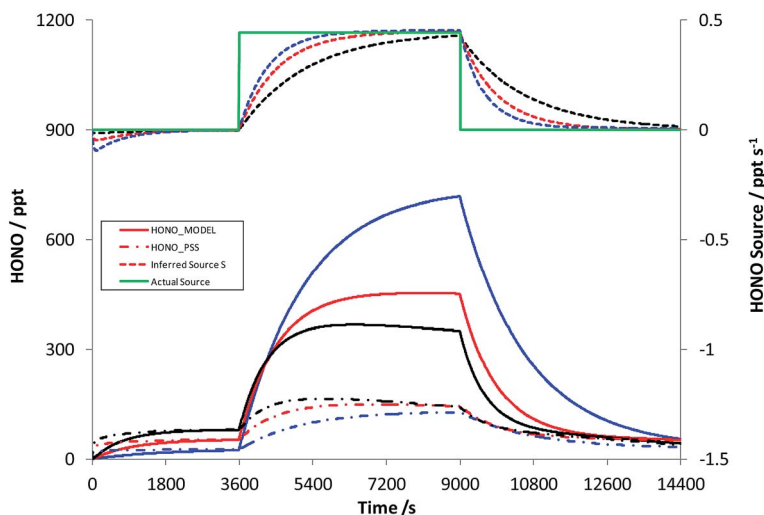


Fig. 4 Scenario 1 – simulation of the HONO abundance, and inferred HONO source strength, for an air parcel transiting a region of enhanced HONO production/emission. Red = base case photolysis frequencies; black/blue = increased/decreased (50%) photolysis frequency sensitivity studies. See text for details.



(1)–(3). Upon addition of the HONO emission (at  $t = 1$  hour),  $\text{HONO}_{\text{MODEL}}$  rises to reach *ca.* 450 ppt at the end of the source-on period (under base case photolysis rates – solid red line), while the steady-state derived HONO, which excludes the missing source, is substantially lower at *ca.* 140 ppt (dot-dash red line). The inferred HONO source (dashed red line) substantially underestimates the true source (solid green line) initially, approaching to within 90% of the true source after 34.5 minutes. The impact of increased/reduced photolysis frequencies is shown in red and blue respectively – variations of  $\pm 50\%$  versus the base case. Decreased actinic flux increases the true HONO level, as would be expected, but also substantially increases the time for the inferred source strength to approach the true value, with 90% agreement only achieved after 61 minutes. Similarly the  $\text{HONO}_{\text{PSS}}$ , as derived from eqn (E2), increases with the increase in photolysis – as the combined increases in OH and NO (*i.e.* the rate of R1) exceed the increase in the HONO photolysis frequency  $j_2$ . The error in the inferred source  $S$  is substantial, persists for a significant time (of the order of tens of minutes) following a step-change in HONO emissions, and is greater under conditions of *lower* solar intensity. The model simulation here omits other potential HONO sinks, such as deposition. These will reduce the HONO lifetime, and hence shorten the time for PSS to be established; in this sense the results in Fig. 4 represent a worst-case scenario in terms of the time required to approach steady state.

## Scenario 2

Scenario 2 represents an air mass receiving a transient injection of emissions ( $\text{NO}_x$ , and/or HONO, and/or VOCs) – for example a parcel of air making a perpendicular transect across a roadway. As for Scenario 1, the model was initialised and allowed to spin-up under typical continental suburban conditions; photolysis rates were held constant, and the evolution of modelled  $\text{HO}_x$ ,  $\text{NO}_x$  and HONO was investigated with a one-off increase (implemented within the model as instantaneous step changes) of NO (8 ppb)/NO<sub>2</sub> (2 ppb)/HONO (0.1 ppb), representing an estimated present-day real-world mean UK fleet NO/NO<sub>2</sub> ratio with an  $f\text{-NO}_2$  value of *ca.* 20%,<sup>55</sup> plus 1% HONO (at the upper end of the range recently reported for China<sup>56</sup> – no data are available for the UK).

Fig. 5a shows the modelled timeseries of OH, NO, NO<sub>2</sub>, O<sub>3</sub> and HONO, for a 120 second period around the injection point. The initial increases in NO<sub>x</sub>, their relaxation to PSS with O<sub>3</sub>, and the response of OH (an initial increase from NO-driven CH<sub>3</sub>O<sub>2</sub> and HO<sub>2</sub> titration, followed by reduction reflecting primarily the evolving additional NO<sub>2</sub> sink) are apparent. Fig. 5b shows the calculated  $\text{HONO}_{\text{MODEL}}$  (red; with essentially a step-change driven by the emission), the calculated  $\text{HONO}_{\text{PSS}}$  (black), and the resulting inferred HONO source strength (shown by the dashed blue line). At all points following the injection, the true HONO source strength is zero; however the non-equilibrium abundances lead to an initially negative inferred additional source, switching to positive after *ca.* 30 seconds, peaking at 2.5 minutes, and relaxing to a near-zero value on a timescale of tens of minutes (the e-folding lifetime of  $S$  here is 17 minutes). Fig. 5c shows the evolution of the model-derived HONO : NO<sub>2</sub> (blue dashes) and HONO : NO<sub>x</sub> (solid red) ratios (multiplied by 1000, *i.e.* as ppt/ppb) – which may be compared with the emission ratios within the model simulation here of 0.05% and 1%



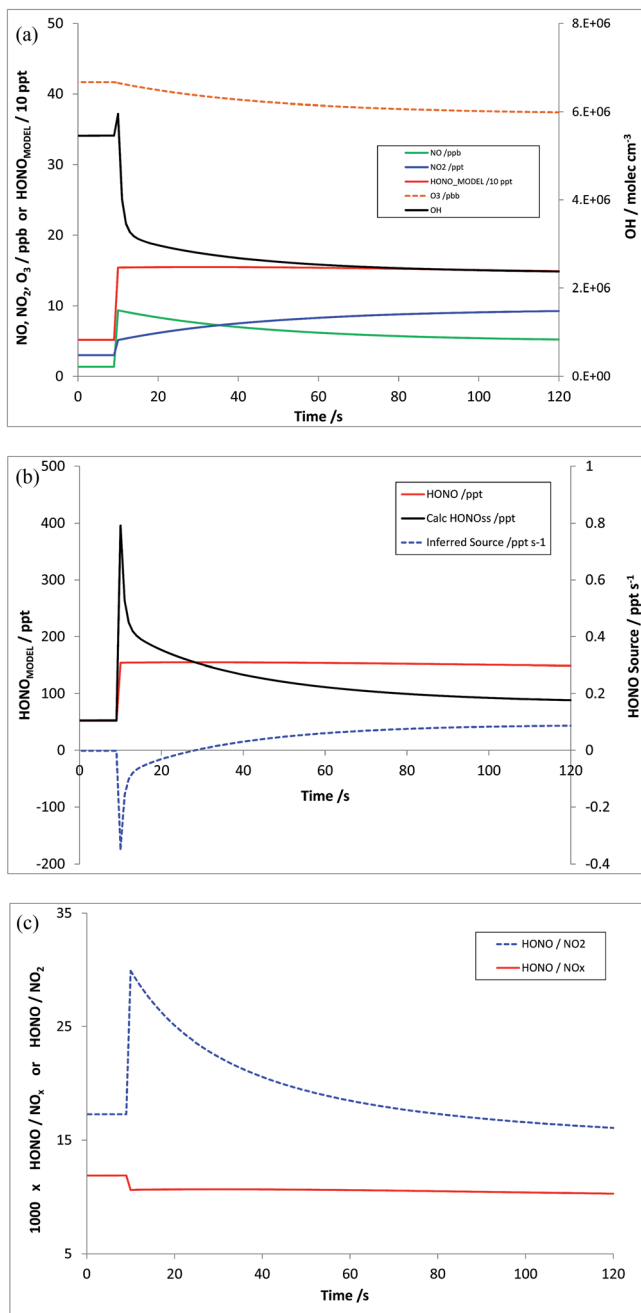


Fig. 5 Scenario 2: evolving composition chemical composition (panel a, top), inferred HONO source (panel b, mid) and HONO/NO<sub>2</sub> and HONO/NO<sub>x</sub> ratios (panel c, bottom) for an air parcel transecting a point source (e.g. a roadway).

respectively (or 50 and 10, when scaled by 1000). The absolute values of these are of course directly dependent upon the pre-existing model NO<sub>x</sub> as well as the emission ratio.



## Scenario 3

Scenario 3 represents a repeat of Scenario 2, without the inclusion of the HONO source – *i.e.* just addition of NO and NO<sub>2</sub>, at the levels outlined above. The resulting modelled HONO and inferred HONO source is shown in Fig. 6a – the equivalent of Fig. 5b. In this case, HONO<sub>MODEL</sub> is near-zero, rising slightly in response to the changing NO<sub>x</sub> (and hence HO<sub>x</sub>) abundance, but the calculated HONO<sub>PSS</sub>, and hence the inferred HONO source, respond substantially to the NO<sub>x</sub> addition – giving an inferred HONO source *S* which is negative at all times. The evolution of the corresponding model-derived HONO : NO<sub>2</sub> and HONO : NO<sub>x</sub> ratios (multiplied by 1000) is shown in Fig. 6b – the true emission ratios in this case being zero, and the pre-injection values reflecting the background model steady state.

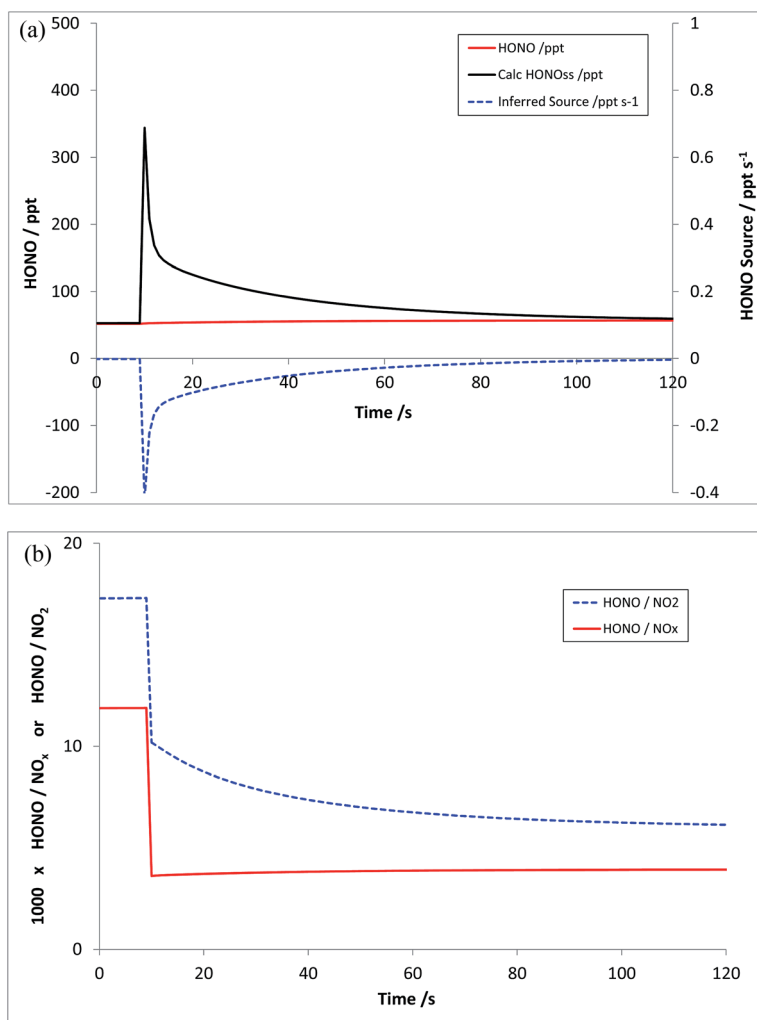


Fig. 6 Scenario 3 – addition of NO and NO<sub>2</sub> (only) to an air parcel. HONO<sub>MODEL</sub>, HONO<sub>PSS</sub> and inferred HONO source strength (panel a, top), and calculated HONO/NO<sub>2</sub> and HONO/NO<sub>x</sub> ratios (panel b, bottom).



## Scenario 4

Scenario 4 explores the impact of (initially) OH-only perturbations, through addition of VOCs alone. The model was re-run, under the same initial conditions, with an “emission” or step-change in  $\text{CH}_4$  and  $\text{CO}$  of 5550 and 600 ppb respectively – which represents a four-fold increase in OH reactivity (from parent VOCs – a slightly smaller increase overall considering degradation products and  $\text{NO}_y$ ). Fig. 7a shows the resulting changes in modelled OH, and  $\text{HONO}_{\text{MODEL}}$ , while Fig. 7b shows the corresponding values of  $\text{HONO}_{\text{PSS}}$  and the inferred  $\text{HONO}$  source strength  $S$  – the latter displaying a positive bias (from the true value of zero), although smaller than the magnitude of the initial signal in Scenario 3 (by

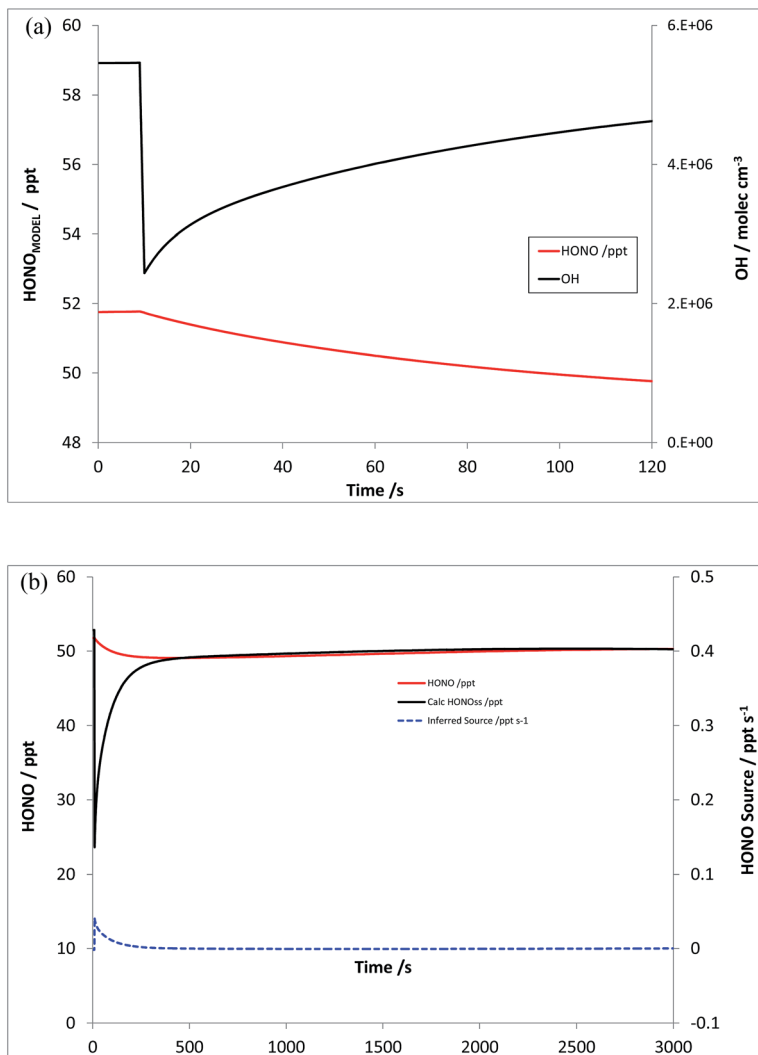


Fig. 7 Scenario 4 – increase in VOC reactivity only (no  $\text{NO}_x$  addition). Simulated  $\text{HONO}_{\text{MODEL}}$  and OH timeseries (panel a, top) and  $\text{HONO}_{\text{PSS}}$  and inferred  $\text{HONO}$  source strength (panel b, bottom).



a factor of 10), decaying rapidly to near-zero levels. The increase in VOC levels here is a modest change in the total OH reactivity, which at *ca.*  $5.9 \text{ s}^{-1}$  ( $\text{CH}_4$  and  $\text{CO}$ ) is substantially below that observed recently in London (*ca.*  $20 \text{ s}^{-1}$  (ref. 57 and 58)) and elsewhere – although the reduction in modelled OH following VOC addition (and hence the inferred source strength  $S$ ) does not scale linearly with  $k'_{\text{OH}}$ .

The model scenarios therefore illustrate the substantial time required for the photostationary state approach to yield accurate results following substantial perturbations in the  $\text{HO}_x/\text{NO}_y/\text{NO}_y$  chemistry. They also illustrate the scope for bias to the inferred HONO source from  $\text{NO}_x$  and VOC emissions, in the absence of any true HONO signal. The bias to the inferred HONO source strength may be either positive or negative, depending upon the air mass age following emission, for the more realistic mixed  $\text{NO}_x$ –HONO emission scenario.

The HONO/ $\text{NO}_2$  ratio evolves substantially following emission in the road-transect Scenario (2), and will only reflect emissions when the background  $\text{NO}_x$  is negligible compared with the emission (a consequence of the ambient daytime  $\text{NO}_2/\text{NO}$  ratio favouring  $\text{NO}_2$ , but the vehicle-emitted  $\text{NO}_x$  being predominantly  $\text{NO}$ , to broadly equal but opposite extents – dependent of course upon  $\text{O}_3$ ,  $j_{\text{NO}_2}$ , vehicle identity *etc.*). In contrast, ambient downwind HONO/ $\text{NO}_x$  ratios are a much better reflection of the emitted species (due to the  $\text{NO}/\text{NO}_2$  relative abundance considerations), and evolve much more slowly (as they are independent of establishment of the  $\text{NO}_x$ – $\text{O}_3$  PSS) following emission.

The question which then arises is, how spatially variable is HONO (and the HONO/ $\text{NO}_x$ , HONO/ $\text{NO}_2$  ratios *etc.*) in the real environment – in particular in non-remote environments where there is substantial landscape and built environment heterogeneity – are the challenges illustrated in Scenarios 1–4 evident in actual measurements? To explore this issue, we present exploratory spatially resolved measurements of HONO and  $\text{NO}_x$  abundance, performed using a mobile instrumented laboratory in Birmingham (UK) and the surrounding areas.

## 5 Real-world spatial variation of boundary layer HONO, NO and $\text{NO}_2$

The measurements reported here were performed around the University of Birmingham campus, Birmingham city centre and suburbs, and on a transect between Birmingham and Leicester, 50 km to the north east, along the M6/M69 motorway/freeway through an otherwise largely rural region. Instruments were mounted in a mobile laboratory, based upon a modified light goods van, with on-board power provided through batteries/inverters and a UPS system, data logging, GPS and camera facilities for chase vehicle emission “sniffing”. HONO was measured using the LOPAP methodology as outlined above; for each measurement the system was thoroughly warmed up on mains power for several hours prior to on-road measurements. NO and  $\text{NO}_2$  were measured using chemiluminescence, with a TE 42i-TL  $\text{NO}_x$  monitor – this unit is fitted with a molybdenum converter for  $\text{NO}_2$  measurements; the approach suffers from known lack of specificity with respect to other nitrogen oxides in the  $\text{NO}_2$  conversion unit, and the  $\text{NO}_2$  data may consequently be more reflective of  $\text{NO}_y$  – although little time may have elapsed for  $\text{NO}_x$  oxidation.  $\text{O}_3$  was measured using a conventional UV absorption monitor (TE 49i). All the monitors sampled from a roof-mounted inlet



which protruded directly above and forwards of the front of the vehicle, with the exception of HONO which was sampled from a port on the vehicle side, with the sampling inlet unit located to protrude well beyond the vehicle boundary layer. The measurement time resolution (instrument response times) were 60 s for the  $\text{NO}_x$  instrument and 20 s for the  $\text{O}_3$  instrument (with (shared) inlet residence time adding negligibly to this). HONO values were obtained every 30 seconds, but the instrument response time is *ca.* 4.5 minutes – the LOPAP approach is not optimised for high time resolution study, owing to the liquid residence/circulation time, and reagent diffusion. Data were corrected for all instrument lags.

Fig. 8a shows the observed HONO and  $\text{NO}_x$  time series for one deployment, which included the University of Birmingham campus (considered an urban background location), and a transect through Birmingham City Centre to the University of Leicester campus, and the return journey, performed on 23rd October 2015. There was a  $\sim 2$  hour break in between the outward and return legs

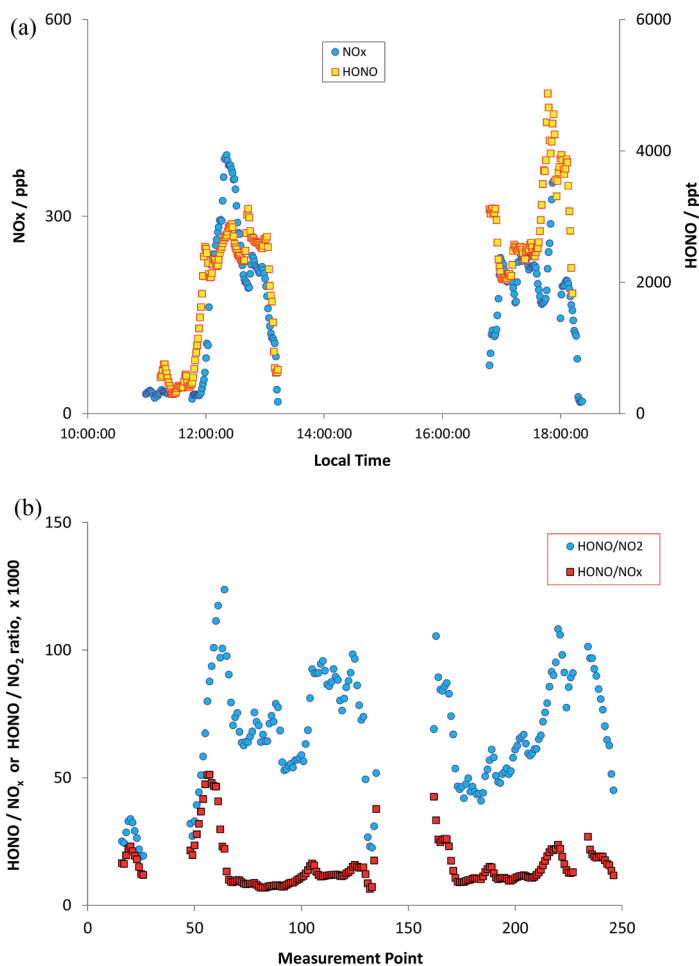


Fig. 8 Measured HONO and  $\text{NO}_x$  (panel a, upper) and HONO/ $\text{NO}_2$  and HONO/ $\text{NO}_x$  ratios (panel b, lower) during on-road measurements, transect from Birmingham to Leicester & return.



of the journey (battery change/recharge). A clear correlation between  $\text{NO}_x$  and HONO is apparent to the eye, although variable in scale (comparing *e.g.* 12:30 and 13:00). Fig. 8b shows the  $\text{HONO}/\text{NO}_2$  and  $\text{HONO}/\text{NO}_x$  ratios, as a function of measurement time point (same dataset as Fig. 8a). The ratios are clearly highly variable, but with patterns reflecting similar values/trends between adjacent measurement points – showing the variation spatially during the journey. To illustrate this more clearly, the spatial trends in the HONO measurements, and  $\text{HONO}/\text{NO}_x$  ratio, are shown in Fig. 9a and b (for the whole journey) and Fig. 10a and b (for a zoom in of the region around Leicester).

The measured HONO and  $\text{NO}_2$  data, and resulting  $\text{HONO}/\text{NO}_2$  ratio, show substantial variation across the measurement sites. Elevated HONO is observed in the city centre, consistent with emissions from traffic, or from other urban activities (or from conversion of traffic-emitted  $\text{NO}_x$ , which displays a similar spatial variation). The “hot spots” around the city centres are more localised than might be expected – at the ground level windspeed of  $14 \text{ km h}^{-1}$ , the HONO lifetime of 17 min (value for 12:30 GMT 23 Oct Birmingham, as calculated by TUV – for clear skies, hence a lower limit to the lifetime) corresponds to a horizontal distance of around 4 km, and a greater spatial influence of the urban environments might have been expected. The relatively slow time response of the LOPAP analyser would be expected to exacerbate such a pattern in the retrieved values.

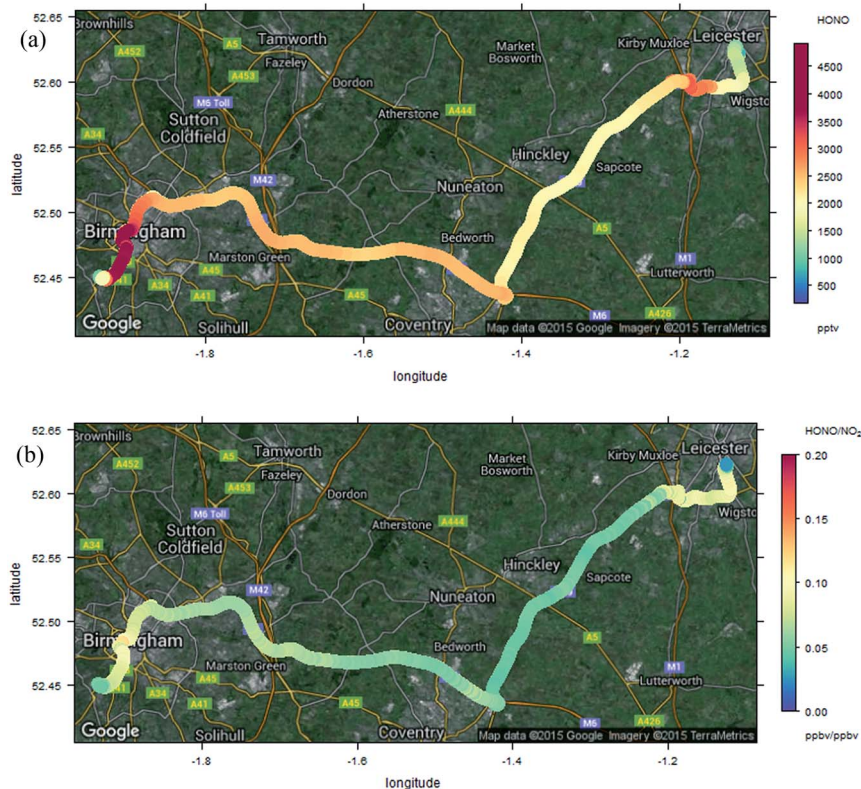


Fig. 9 Measured HONO (panel a, upper) and  $\text{HONO}/\text{NO}_2$  ratio (panel b, lower) during Birmingham–Leicester transect.





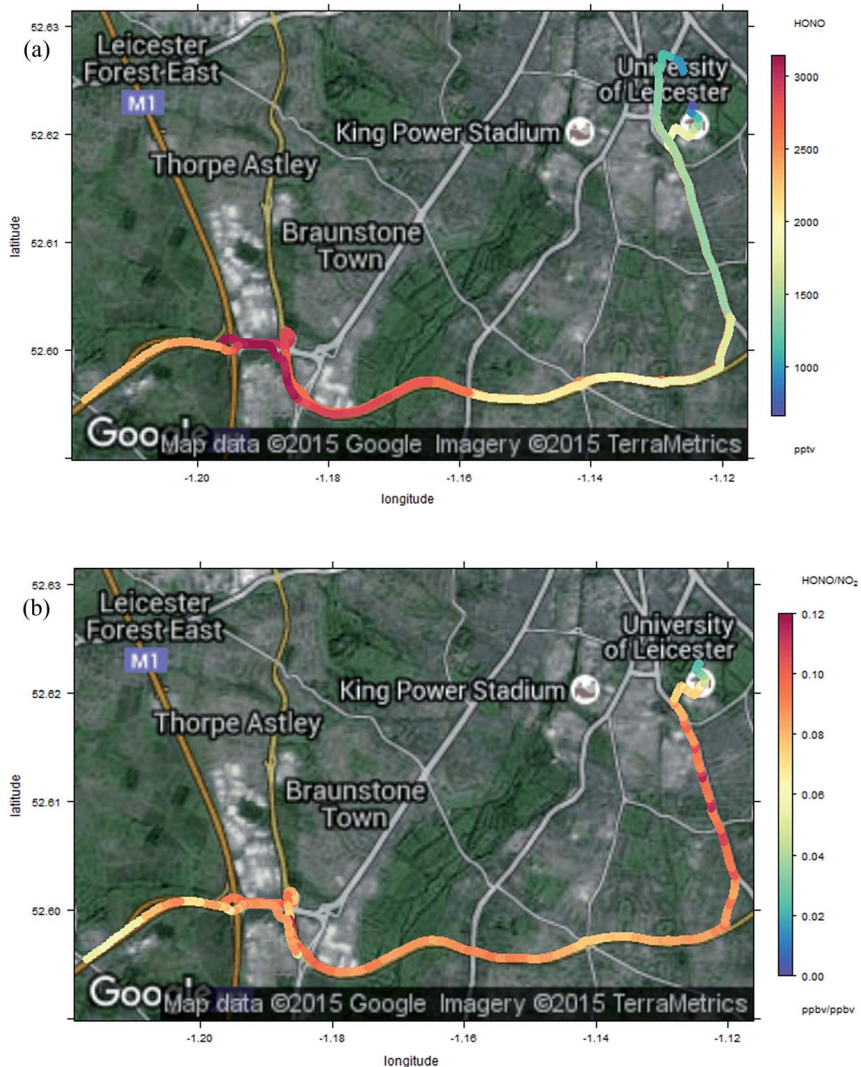


Fig. 10 Enlargement of Fig. 9 – measured HONO (panel a, upper) and HONO/NO<sub>2</sub> ratio (panel b, lower) around the Leicester end of the journey, including open highway, congested major urban artery and urban background sections, from bottom-left to top-right respectively.

Local topography may have contributed to this, *e.g.* “street canyon” type environments within the highway infrastructure concrete architecture.

HONO (and NO<sub>x</sub>) levels are much more uniform on the open motorway/highway section of the journey; this is particularly clear from Fig. 11, which displays the mean ( $\pm 1$  standard deviation) HONO/NO<sub>x</sub> ratios observed for each environment, spatially defined, during the measurements. The values for the two “motorway” periods are very similar, and with much smaller variability, while the urban centres – Birmingham, Leicester – have similar but much more variable values for the ratio. The decrease in variability apparent across the figure may also reflect the increasing HONO and NO<sub>x</sub> lifetime, later in the day, as photolysis rates



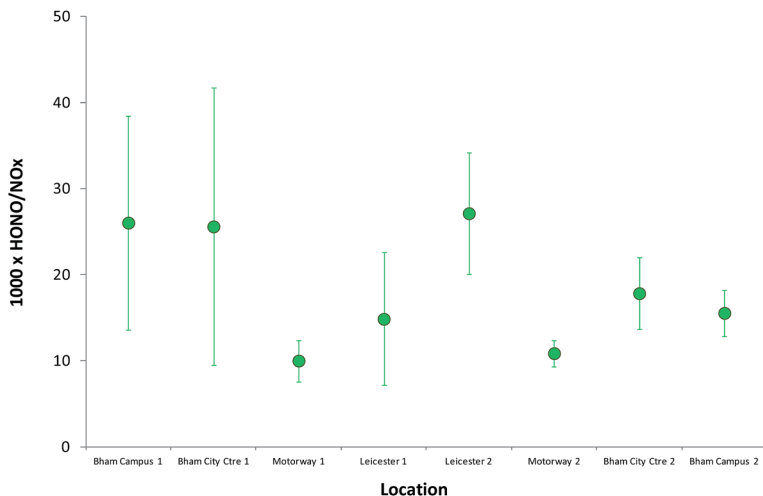


Fig. 11 Mean ( $\pm 1$  standard deviation) HONO/NO<sub>x</sub> ratios observed for each environment, spatially defined, during the on-road transect measurements.

declined. The HONO/NO<sub>2</sub> ratio is very highly variable (Fig. 8) – more so than the HONO/NO<sub>x</sub> ratio – reflecting the issues outlined above (impact of substantial evolution of the NO<sub>x</sub> PSS following emission, reflecting the differing ratios of NO : NO<sub>2</sub> in exhaust and in background daytime air). For these reasons the HONO/NO<sub>2</sub> ratio is much less robust a metric of emissions, and much more sensitive to measurement location *vs.* post-emission airmass age, than the HONO/NO<sub>x</sub> ratio, for consideration of traffic sources. As all the environments probed here would be expected to be at least influenced, and in some cases dominated, by traffic emissions, this result may point to multiple sources contributing to the observed HONO levels. Variability in the HONO–NO<sub>2</sub> ratio with time (at the same location: weekday *vs.* weekend) was recently reported,<sup>59</sup> indicating the importance of non-direct-emission sources.

OH observations were not feasible for the mobile measurements, so analysis to determine the relationship between NO, OH and HONO and any additional HONO source is not possible; however the sharp spatial gradients in HONO in the urban centre (Fig. 10a) highlight the challenge of application of this approach to spatially heterogeneous regions, including near to major roadways (*e.g.* the M1–A42 junction region shown in the lower left of Fig. 10a) – the real-world equivalent of the problems demonstrated in Fig. 5b. In contrast, in environments which are homogeneous on spatial scales of a few km (*e.g.* the “motorway” segments of the transect in the centre of Fig. 9a), the approximation of the steady state approach is likely to hold. The situation in urban background regions, similar to those employed in a number of previous studies (including the data presented here) is more complex – within the Birmingham and Leicester environments, regions of consistent HONO and NO<sub>x</sub> abundance are apparent, but also substantial deviations from these – in the vicinity of major road-ways, pointed to traffic sources of HONO (and/or, of NO<sub>x</sub> which can be converted to HONO through the various mechanisms outlined above). Application of the PSS approach eqn (E3) in such locations may be problematic, because the substantial spatial heterogeneity



indicates that local PSS is not achieved, and hence inferred additional source contributions may be inaccurate.

Alternative approaches are required to definitively constrain HONO sources, alongside analyses of point concentration measurements. These include flux measurements for surface sources, obtained using vertically resolved observations;<sup>32–34</sup> laboratory and tunnel investigations of specific processes,<sup>42,60</sup> and ensuring that where the PSS methods are applied to field data, the environments are sufficiently homogeneous<sup>16,21</sup> or decoupled<sup>36</sup> that local spatial variability concerns do not apply.

## 6 Conclusions

A substantial body of literature has shown that HONO levels are higher than can be explained by simple/established gas-phase chemistry (reactions (1)–(3)) supporting the existence of additional sources, and hence the role of HONO as an important net OH precursor in the boundary layer. Application of the PSS approach can quantify the missing source strength, but only where HONO, NO<sub>x</sub> and OH are in photochemical steady state; the timescale for this to be established (tens of minutes) is non-negligible compared with spatial heterogeneity in many continental environments (although most remote environments will satisfy this condition). Non-chemical-equilibrium conditions can lead to such analyses inferring the presence of additional HONO sources where these do not exist, and can bias such analyses in both positive and negative directions. The HONO/NO<sub>x</sub> ratio is a more robust tracer of emissions characteristics than the HONO/NO<sub>2</sub> ratio during daytime (although the latter is a key tool for constraint of NO<sub>2</sub>–HONO surface conversion processes and ground fluxes away from local emission sources). Measurements of the spatial variability of HONO in urban, suburban and rural environments in the UK show that pronounced changes in abundance are found in proximity to major roads within urban areas – indicating that PSS analyses in such areas are likely to be problematic – but also areas of very homogeneous HONO and NO<sub>x</sub> abundance in rural, and some suburban, regions, where the PSS approach may be valid.

## Acknowledgements

This work was supported in part by the Natural Environment Research Council, grants NE/K012169/1 (Integrated Chemistry of Ozone in the Atmosphere), NE/M013545/1 (Sources of Nitrous Acid in the Atmospheric Boundary Layer) and NE/J008990/1 (Identification of missing organic reactivity in the urban troposphere). We thank Ajit Singh (UoB) for discussions regarding HONO variability. The Leeds FAGE instrumentation is supported by the NERC National Centre for Atmospheric Science.

## References

- 1 H. Levy, *Science*, 1971, **173**, 141.
- 2 D. E. Heard and M. J. Pilling, *Chem. Rev.*, 2003, **103**, 5163.
- 3 F. Rohrer and H. Berresheim, *Nature*, 2006, **442**, 184.
- 4 J. Kleffmann, *ChemPhysChem*, 2007, **8**, 1137.



- 5 D. Perner and U. Platt, *Geophys. Res. Lett.*, 1979, **6**, 917.
- 6 J. Stutz, B. Alicke, R. Ackermann, A. Geyer, S. Wang, A. B. White, E. J. Williams, C. W. Spicer and J. D. Fast, *J. Geophys. Res.*, 2004, DOI: 10.1029/2003jd004209.
- 7 S. M. Ball and R. L. Jones, *Chem. Rev.*, 2003, **103**, 5239.
- 8 J. Heland, J. Kleffmann, R. Kurtenbach and P. Wiesen, *Environ. Sci. Technol.*, 2001, **35**, 3207.
- 9 G. Huang, X. Zhou, G. Deng, H. Qiao and K. Civerolo, *Atmos. Environ.*, 2002, **36**, 2225.
- 10 J. E. Dibb, M. Arsenault, M. C. Peterson and R. E. Honrath, *Atmos. Environ.*, 2002, **36**, 2501.
- 11 W. Liao, A. Hecobian, J. Mastromarino and D. Tan, *Atmos. Environ.*, 2006, **40**, 17.
- 12 T. Jurkat, C. Voigt, F. Arnold, H. Schlager, J. Kleffmann, H. Aufmhoff, D. Schäuble, M. Schaefer and U. Schumann, *Geophys. Res. Lett.*, 2011, DOI: 10.1029/2011gl046884.
- 13 M. Ródenas, A. Muñoz, F. Alacreu, T. Brauers, H.-P. Dorn, J. Kleffmann, and W. Bloss, *Assessment of HONO Measurements: The FIONA Campaign at EUPHORE, Disposal of Dangerous Chemicals in Urban Areas and Megacities, NATO Science for Peace & Security Series C: Environmental Security*, ed. I. Barnes and K. J. Rudzinski, 2012, ch. 4, pp. 45–58, DOI: 10.1007/978-94-007-5034-0\_4.
- 14 X. Ren, H. Harder, M. Martinez, R. L. Lesher, A. Oliger, J. B. Simpas, W. H. Brune, J. J. Schwab, K. L. Demerjian, Y. He, X. Zhou and H. Gau, *Atmos. Environ.*, 2003, **37**, 3639.
- 15 X. Ren, W. H. Brune, J. Mao, M. J. Mitchell, R. L. Lesher, J. B. Simpas, A. R. Metcalf, J. J. Schwab, C. Caib, Y. Lib, K. L. Demerjian, H. D. Felton, G. Boynton, A. Adams, J. Perry, Y. Hed, X. Zhou and J. Hou, *Atmos. Environ.*, 2006, **40**, S252.
- 16 J. Kleffman, T. Gavriloaiei, A. Hofzumahaus, F. Holland, R. Koppmann, L. Rupp, E. Schosser, M. Siese and A. Wahner, *Geophys. Res. Lett.*, 2005, **32**, DOI: 10.1029/2005gl022524.
- 17 V. Michoud, A. Kukui, M. Camredon, A. Colomb, A. Borbon, K. Miet, B. Aumont, M. Beekmann, R. Durand-Jolibois, S. Perrier, P. Zapf, G. Siour, W. Ait-Helal, N. Locoge, S. Sauvage, C. Afif, V. Gros, M. Furger, G. Ancellet and J. F. Doussin, *Atmos. Chem. Phys.*, 2012, **12**, 11951.
- 18 S. Kim, T. C. VandenBoer, C. J. Young, T. P. Riedel, J. A. Thornton, B. Swarthout, B. Sive, B. Lerner, J. B. Gilman, C. Warneke, J. M. Roberts, A. Guenther, N. L. Wagner, W. P. Dubé, E. Williams and S. S. Brown, *J. Geophys. Res.*, 2014, DOI: 10.1002/2013jd019784.
- 19 J. D. Lee, L. K. Whalley, D. E. Heard, D. Stone, R. E. Dunmore, J. F. Hamilton, D. E. Young, J. D. Allan, S. Laufs and J. Kleffmann, *Atmos. Chem. Phys.*, 2015, **15**, 22097.
- 20 X. Li, T. Brauers, R. Häseler, B. Bohn, H. Fuchs, A. Hofzumahaus, F. Holland, S. Lou, K. D. Lu, F. Rohrer, M. Hu, L. M. Zeng, Y. H. Zhang, R. M. Garland, H. Su, A. Nowak, A. Wiedensohler, N. Takegawa, M. Shao and A. Wahner, *Atmos. Chem. Phys.*, 2012, **12**, 1497.
- 21 R. Oswald, M. Ermel, K. Hens, A. Novelli, H. G. Ouwersloot, P. Paasonen, T. Petäjä, M. Sipilä, P. Keronen, J. Bäck, R. Königstedt, Z. Hosaynali Beygi,



- H. Fischer, B. Bohn, D. Kubistin, H. Harder, M. Martinez, J. Williams, T. Hoffmann, I. Trebs and M. Sörgel, *Atmos. Chem. Phys.*, 2015, **15**, 799.
- 22 V. Michoud, A. Colomb, A. Borbon, K. Miet, M. Beekmann, M. Camredon, B. Aumont, S. Perrier, P. Zapf, G. Siour, W. Ait-Helal, C. Afif, A. Kukui, M. Furger, J. C. Dupont, M. Haeffelin and J. F. Doussin, *Atmos. Chem. Phys.*, 2014, **14**, 2805.
- 23 Y. F. Elshorbany, R. Kurtenbach, P. Wiesen, E. Lissi, M. Rubio, G. Villena, E. Gramsch, A. R. Rickard, M. J. Pilling and J. Kleffmann, *Atmos. Chem. Phys.*, 2009, **9**, 2257.
- 24 R. M. Harrison and A.-M. N. Kitto, *Atmos. Environ.*, 1994, **28**, 1089.
- 25 B. J. Finlayson-Pitts, L. M. Wingen, A. L. Sumner, D. Syomin and K. A. Ramazan, *Phys. Chem. Chem. Phys.*, 2003, **5**, 223.
- 26 M. Ammann, M. Kalberer, D. T. Jost, L. Tobler, E. Rossler, D. Piguet, H. W. Gäggeler and U. Baltensperger, *Nature*, 1998, **395**, 157.
- 27 C. George, R. S. Strekowski, J. Kleffmann, K. Stemmler and M. Ammann, *Faraday Discuss.*, 2005, **130**, 195.
- 28 K. Stemmler, M. Ammann, C. Donders, J. Kleffmann and C. George, *Nature*, 2006, **440**, 195.
- 29 J. M. Langridge, R. J. Gustafsson, P. T. Griffiths, R. A. Cox, R. M. Lambert and R. L. Jones, *Atmos. Environ.*, 2009, **43**, 5128.
- 30 X. Zhou, N. Zhang, M. TerAvest, D. Tang, J. Hou, S. Bertman, M. Alaghmand, P. B. Shepson, M. A. Carroll, S. Griffith, S. Dusanter and P. S. Stevens, *Nat. Geosci.*, 2011, **4**, 440.
- 31 C. J. Young, R. A. Washenfelder, J. M. Roberts, L. H. Mielke, H. D. Osthoff, C. Tsai, O. Pikel'naya, J. Stutz, P. R. Veres, A. K. Cochran, T. C. VandenBoer, J. Flynn, N. Grossberg, C. L. Haman, B. Lefer, H. Stark, M. Graus, J. de Gouw, J. B. Gilman, W. C. Kuster and S. S. Brown, *Environ. Sci. Technol.*, 2012, **46**, 10965.
- 32 B. Vogel, H. Vogel, J. Kleffmann and R. Kurtenbach, *Atmos. Environ.*, 2003, **37**, 2957.
- 33 N. Zhang, X. Zhou, P. B. Shepson, H. Gao, M. Alaghmand and B. Stirm, *Geophys. Res. Lett.*, 2009, **36**, DOI: 10.1029/2009gl038999.
- 34 T. C. VandenBoer, S. S. Brown, J. G. Murphy, W. C. Keene, J. C. Young, A. A. P. Pszenny, S. Kim, C. Warneke, J. A. de Gouw, J. R. Maben, N. L. Wagner, T. P. Riedel, J. A. Thornton, D. E. Wolfe, W. P. Dubé, F. Öztürk, C. A. Brock, N. Grossberg, B. Lefer, B. Lerner, A. M. Middlebrook and J. M. Roberts, *J. Geophys. Res.*, 2013, DOI: 10.1002/jgrd.50721.
- 35 J. Kleffmann and P. Wiesen, *Atmos. Chem. Phys.*, 2005, **5**, 77.
- 36 X. Li, F. Rohrer, A. Hofzumahaus, T. Brauers, R. Häseler, B. Bohn, S. Broch, H. Fuchs, S. Gomm, F. Holland, J. Jäger, J. Kaiser, F. N. Keutsch, I. Lohse, K. Lu, R. Tillmann, R. Wegener, G. M. Wolfe, T. F. Mentel, A. Kiendler-Scharr and A. Wahner, *Science*, 2014, **344**, 292.
- 37 H. Su, Y. Cheng, R. Oswald, T. Behrendt, I. Trebs, F. X. Meixner, M. O. Andreae, P. Cheng, Y. Zhang and U. Pöschl, *Science*, 2011, **333**, 1616.
- 38 R. Oswald, T. Behrendt, M. Ermel, D. Wu, H. Su, Y. Cheng, C. Breuninger, A. Moravek, E. Mougín, C. Delon, B. Loubet, A. Pommerening-Röser, M. Sörgel, U. Pöschl, T. Hoffmann, M. O. Andreae, F. X. Meixner and I. Trebs, *Science*, 2013, **341**, 1233.



- 39 B. Weber, D. Wu, A. Tamm, N. Ruckteschler, E. Rodríguez-Caballero, J. Steinkamp, H. Meusel, W. Elbert, T. Behrendt, M. Sörgel, Y. Cheng, P. J. Crutzen, H. Su and U. Pöschl, *Proc. Natl. Acad. Sci. U. S. A.*, 2015, **15**, 15384.
- 40 G. Lammel and J. N. Cape, *Chem. Soc. Rev.*, 2006, **25**, 361.
- 41 F. Spataro and A. Ianniello, *J. Air Waste Manage. Assoc.*, 2014, **64**, 1232.
- 42 C. George, M. Ammann, B. D'Anna, D. J. Donaldson and S. A. Nizkorodov, *Chem. Rev.*, 2015, **115**, 4218.
- 43 D. L. Chapman and L. K. Underhill, *J. Chem. Soc., Trans.*, 1913, **103**, 496.
- 44 P. A. Leighton, *Photochemistry of air pollution*, Academic Press, New York, 1961.
- 45 A. Volz-Thomas, H. W. Pätz, N. Houben, S. Konrad, D. Mihelcic, T. Klüpfel and D. Perner, *J. Geophys. Res.*, 2003, **108**, DOI: 10.1029/2001jd001255.
- 46 Z. Hosaynali Beygi, H. Fischer, H. D. Harder, M. Martinez, R. Sander, J. Williams, D. M. Brookes, P. S. Monks and J. Lelieveld, *Atmos. Chem. Phys.*, 2011, **11**, 8497.
- 47 I. Bejan, Y. Abd El Aal, I. Barnes, T. Benter, B. Bohn, P. Wiesen and J. Kleffmann, *Phys. Chem. Chem. Phys.*, 2006, **8**, 2028.
- 48 B. H. Lee, E. C. Wood, S. C. Herndon, B. L. Lefer, W. T. Luke, W. H. Brune, D. D. Nelson, M. S. Zahniser and J. W. Munger, *J. Geophys. Res.*, 2013, DOI: 10.1002/2013jd020341.
- 49 D. Stone, L. K. Whalley and D. E. Heard, *Chem. Soc. Rev.*, 2012, **41**, 6348.
- 50 L. K. Whalley, K. L. Furneaux, A. Goddard, J. D. Lee, A. Mahajan, H. Oetjen, K. A. Read, N. Kaaden, L. J. Carpenter, A. C. Lewis, J. M. C. Plane, E. S. Saltzman, A. Wiedensohler and D. E. Heard, *Atmos. Chem. Phys.*, 2010, **10**, 1555.
- 51 J. D. Lee, S. J. Moller, K. A. Read, A. C. Lewis, L. Mendes and L. J. Carpenter, *J. Geophys. Res.*, 2009, **114**, DOI: 10.1029/2009jd011878.
- 52 T. C. VandenBoer, C. J. Young, R. K. Talukdar, M. Z. Markovic, S. S. Brown, J. M. Roberts and J. G. Murphy, *Nat. Geosci.*, 2015, **8**, 55.
- 53 C. Bloss, V. Wagner, M. E. Jenkin, R. Volkamer, W. J. Bloss, J. D. Lee, D. E. Heard, K. Wirtz, M. Martin-Reviejo, G. Rea, J. C. Wenger and M. J. Pilling, *Atmos. Chem. Phys.*, 2005, **5**, 641.
- 54 S. M. Saunders, M. E. Jenkin, R. G. Derwent and M. J. Pilling, *Atmos. Chem. Phys.*, 2003, **3**, 161.
- 55 D. C. Carslaw and G. Rhys-Tyler, *Atmos. Environ.*, 2013, **81**, 339.
- 56 Z. Xu, T. Wang, J. Wu, L. Xue, J. Chan, Q. Zha, S. Zhou, P. K. K. Louie and C. W. Y. Luk, *Atmos. Environ.*, 2015, **106**, 100.
- 57 R. E. Dunmore, J. R. Hopkins, R. T. Lidster, J. D. Lee, M. J. Evans, A. R. Rickard, A. C. Lewis and J. F. Hamilton, *Atmos. Chem. Phys. Discuss.*, 2015, **15**, 9983, DOI: 10.5194/acp-15-9983-2015.
- 58 L. K. Whalley, L. K. D. Stone, B. Bandy, R. Dunmore, J. F. Hamilton, J. Hopkins, J. D. Lee, A. C. Lewis and D. E. Heard, *Atmos. Chem. Phys. Discuss.*, 2016, **16**, 2747, DOI: 10.5194/acp-16-2747-2016.
- 59 S. E. Pusede, T. C. VandenBoer, J. G. Murphy, M. Z. Markovic, C. J. Young, P. Veres, J. M. Roberts, R. A. Washenfelder, S. S. Brown, X. Ren, C. Tsai, J. Stutz, W. H. Brune, E. C. Browne, P. Wooldridge, A. R. Graham, R. Weber, A. H. Goldstein, S. Dusanter, S. Griffith, P. S. Stevens, B. Lefer and R. C. Cohen, *Environ. Sci. Technol.*, 2015, DOI: 10.1021/acs.est.5b02511.
- 60 R. Kurtenbach, K. H. Becker, J. A. G. Gomes, J. Kleffmann, J. C. Lörzer, M. Spittler, P. Wiesen, R. Ackermann, A. Geyer and U. Platt, *Atmos. Environ.*, 2001, **35**, 3385.

