

Analytical Methods

rsc.li/methods

The Royal Society of Chemistry is the world's leading chemistry community. Through our high impact journals and publications we connect the world with the chemical sciences and invest the profits back into the chemistry community.

IN THIS ISSUE

ISSN 1759-9679 CODEN AMNECT 16(37) 6293–6452 (2024)



Cover

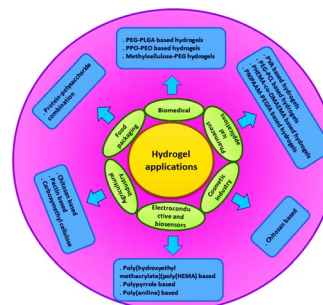
See Rebecca J. Whelan *et al.*, pp. 6337–6348. Image reproduced by permission of Rebecca J. Whelan from *Anal. Methods*, 2024, **16**, 6337.

CRITICAL REVIEW

6300

Flexible and wearable electronic systems based on 2D hydrogel composites

Sushil Kumar Verma, Varee Tyagi, Sonika, Taposhree Dutta and Satyendra Kumar Mishra*



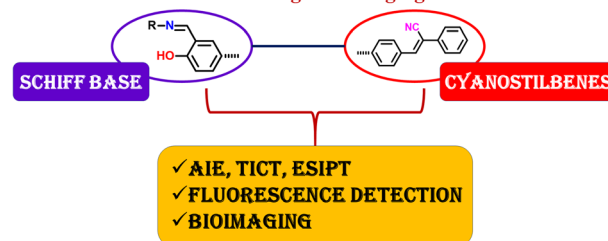
TUTORIAL REVIEW

6323

Glowing discoveries: Schiff base-cyanostilbene probes illuminating metal ions and biological entities

Afrin A, Chinna Ayya Swamy P* and Angel Rose

Probing the Future: Schiff Base-Cyanostilbene—A Breakthrough in Sensing and Imaging



EES Batteries

**Exceptional research on
batteries and energy storage**

Part of the EES family

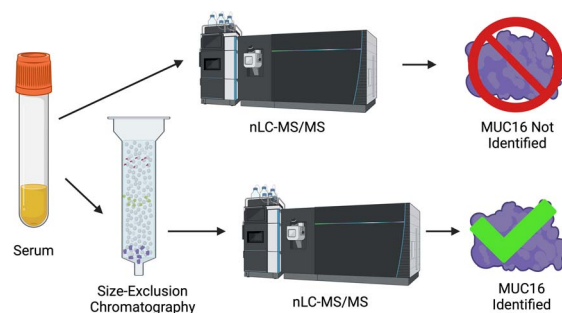
**Join
in** | Publish with us
rsc.li/EESBatteries

PAPERS

6337

Immunoaffinity-free chromatographic purification of ovarian cancer biomarker CA125 (MUC16) from blood serum enables mass spectrometry characterization

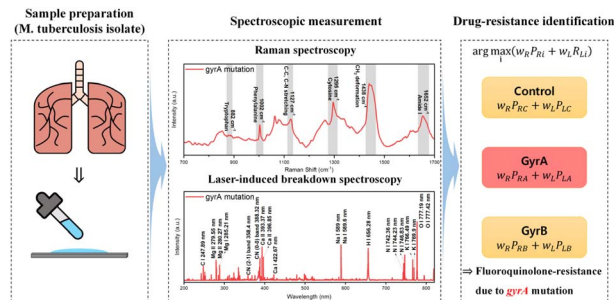
Naviya Schuster-Little, Andrew D. Sokolovsky, Ashten Gentry, Anita Saraf, Mark R. Etzel, Manish S. Patankar and Rebecca J. Whelan*



6349

Identification of fluoroquinolone-resistant *Mycobacterium tuberculosis* through high-level data fusion of Raman and laser-induced breakdown spectroscopy

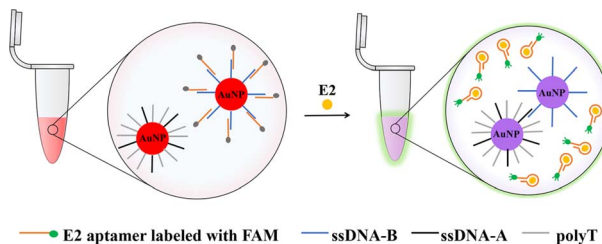
Gookseon Jeon, Soogeun Kim, Young Jin Kim, Seungmo Kim, Kyungmin Han, Kyunghwan Oh, Hee Joo Lee* and Janghee Choi*



6356

Fluorescence and colorimetric analysis of β -estradiol based on aptamer assembled spherical nucleic acids

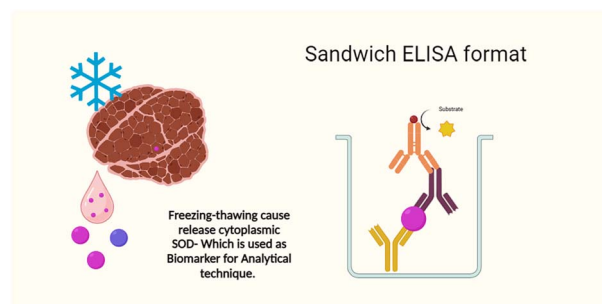
Leyuan Chen, Aijiao Yuan, Dapeng Zhang, Wenjing Xie and Hanyong Peng*



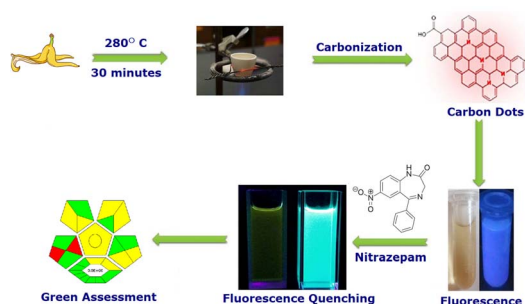
6364

ELISA-based detection of fresh and frozen-thawed lamb meat: a promising analytical approach for meat authentication

C. K. Faslu Rahman, Ashim Kumar Biswas,* Ravikant Agrawal, Sanchay Kumar Biswas, Bedika Bora, T. S. Anand, Argana Ajay and Arup Ratan Sen



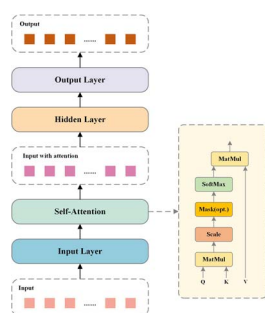
6373



A novel turn-off green carbon dot-based fluorescent probe for selective determination of nitrazepam in its pharmaceutical dosage form and milk samples

Amir Shaaban Farag,^{*} Mohamed Rizk, Omaila Mahmoud Mohamed and Marwa Mohamed Azab

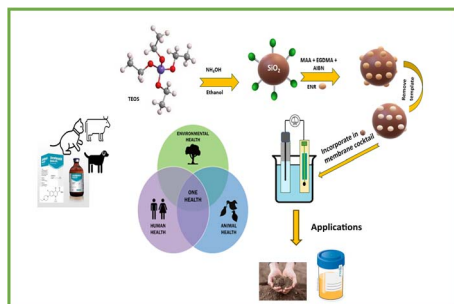
6383



Improved boosting and self-attention RBF networks for COD prediction based on UV-vis

Xi'ang Chen, Senlin Wang,^{*} Hao Chen and Renhao Fan

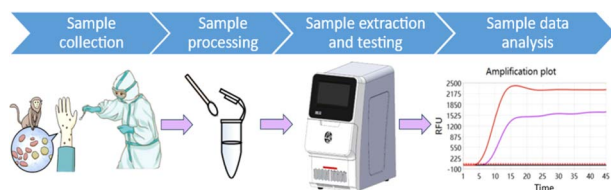
6392



Core-shell molecularly imprinted polymer sensor for enrofloxacin determination in various matrices: a novel, sustainable One Health analytical strategy

Mona T. Ragab,^{*} Amr M. Mahmoud and Heba M. Mohamed

6403



Novel point-of-care rapid detection of monkeypox virus

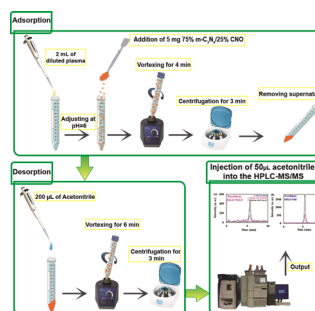
Hui Chen, Yuhong Guan, Xinyu Zhang, Yuting Chen, Song Li, Yan Deng and Yanqi Wu^{*}



6411

Preparation of a new composite based on multilayer fullerene with mesoporous carbon nitride and its application in the extraction of tacrolimus and everolimus from plasma prior to LC-MS/MS analysis

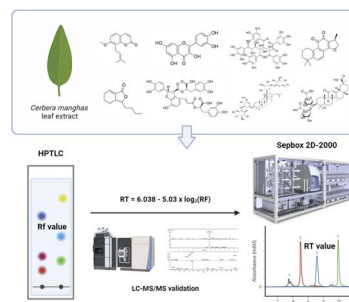
Rana Honarnezhad, Mohammad Reza Afshar Mogaddam,* Elnaz Marzi Khosrowshahi,* Mir Ali Farajzadeh and Mahboob Nemati



6420

A rapid optimization method for Sepbox system separation using HPTLC: an application of *Cerbera manghas* L. separation

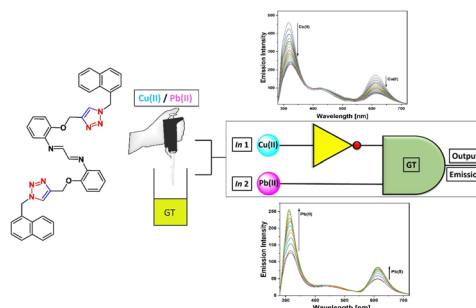
Ta-Wei Liu, Po-Yen Lin, Man-Hsiu Chu, San-Yuan Wang and Ching-Kuo Lee*



6429

A 'click' based fluorescent probe mimicking the IMPLICATION logic gate for Cu(II) and Pb(II) sensing: DFT and molecular docking studies

Gurleen Singh, Gurjaspreet Singh, Sushma, Gagandeep Kaur, Gurpreet Kaur, Harminder Singh* and Jandeep Singh*



6443

Cu-MOFs@AuPtNPs nanozyme-based immunosorbent assay for colorimetric detection of alpha-fetoprotein

Sitian Tang, Juan Cai, Kai Zhou, Zhu Mei, Dongmei Huang, Ling Liu, Lunyu Yang, Dan Yin* and Liyi Hu*

