

Cite this: *Nanoscale Adv.*, 2022, 4, 4470Received 27th July 2022  
Accepted 3rd September 2022

DOI: 10.1039/d2na00485b

rsc.li/nanoscale-advances

## Transformable nanoparticles to bypass biological barriers in cancer treatment

Mythili Ramachandran,<sup>a</sup> Zhao Ma,<sup>b</sup> Kai Lin,<sup>c</sup> Cristabelle De Souza<sup>d</sup>  
and Yuanpei Li<sup>\*a</sup>

Nanomedicine based drug delivery platforms provide an interesting avenue to explore for the future of cancer treatment. Here we discuss the barriers for drug delivery in cancer therapeutics and how nanomaterials have been designed to bypass these blockades through stimuli responsive transformation in the most recent update. Nanomaterials that address the challenges of each step provide a promising solution for new cancer therapeutics.

### Introduction

Cancer remains one of the leading causes of mortality despite significant advances in medicine and emerging treatments.<sup>1</sup> Chemotherapy is the current preferred treatment for unresectable tumors and preventing metastasis. Many chemotherapeutic agents are small molecules that have systemic toxicity because of nonspecific interactions affecting healthy tissue, poor solubility and narrow therapeutic indices. To address these challenges, the use of nanomaterials is a method to improve existing chemotherapeutics with enhanced drug delivery to the tumor site along with imaging and detection of disease progression using a theranostic approach.

Nanomedicine, referring to drugs approximately in the 1–100 nm range have the ability to be more easily functionalized, including their size, charge and surface properties, making them promising new generation chemotherapeutics.

Strategic design of nanoparticles to overcome each barrier for effective cancer treatment is necessary to improve current treatment options. The biological barriers include initial circulation in blood in which shear stress and interactions with blood proteins must be avoided. Next, drugs must target the tumor and avoid healthy cells, along with extravasating the blood vessel to reach the tumor tissue. The drug must then penetrate the dense extracellular matrix formed around tumors and enter the cell. Finally, the drug must remain in the cell long enough to exert an effect (Fig. 1). Nanomedicine provides many advantages to address these barriers.<sup>2</sup> Initially, the enhanced permeability and retention (EPR) effect was the original explanation used to describe the superior capabilities of nanoparticles in tumor therapies. Nanoparticles preferentially enter the tumor due to the leakier vasculature surrounding the tumor and they are retained because of the lower lymphatic clearance.<sup>2</sup>

<sup>a</sup>Department of Biochemistry and Molecular Medicine, University of California-Davis, USA. E-mail: lypli@ucdavis.edu

<sup>b</sup>Department of Medicinal Chemistry, Key Laboratory of Chemical Biology, School of Pharmaceutical Sciences, Cheeloo College of Medicine, Shandong University, Jinan, Shandong, China

<sup>c</sup>College of Food Science and Engineering, Ocean University of China, Qingdao, China

<sup>d</sup>Department of Pathology and Stem Cell Research, Stanford University, USA



Mythili Ramachandran has completed her PhD in Pharmacology and Toxicology at the University of California-Davis in the laboratory of Professor Yuanpei Li. Her research interests include nanomedicine in the field of cancer therapeutics. Mythili will be further pursuing preclinical drug development in her career.



Zhao Ma is presently a professor at the School of Pharmaceutical Sciences, Shandong University. He received his PhD from Shandong University in 2016 and completed his postdoctoral training at UC Davis, in 2021. His research interests focus on development of molecules targeting subcellular structures for diagnosis and treatment of disease.



Recent reports have suggested additional mechanisms to explain nanoparticle uptake especially in desmoplastic tumors, namely transcytosis.<sup>3,4</sup> Transcytosis involves the use of a receptor-mediated process to move the nanoparticle across the cell membrane. In the case of nab-paclitaxel, albumin bound paclitaxel facilitates transcytosis in the dense stroma of pancreatic cancer cells.<sup>5,6</sup>

Additionally, the size paradox that exists for nanoparticles needs to be accounted for when creating an optimal therapeutic agent. Smaller nanoparticles can easily traverse the bloodstream and be internalized by the tumor quickly. However, a smaller size results in quick clearance by the reticuloendothelial system (RES) and kidney.<sup>2</sup> Larger nanoparticles avoid premature clearance and are retained for longer durations but cannot penetrate the tumor as efficiently.<sup>7</sup> To overcome this paradox, transformability is a key method that could combine the advantages of both small and large nanoparticles to promote transcytosis in addition to the inherent EPR effect that makes nanoparticles attractive therapeutics.



*Dr. Kai Lin is an Associate Professor in the College of Food Science and Engineering, Ocean University of China, Qingdao, China. He received his PhD from the Harbin Institute of Technology, Harbin, China. During 2018–2021, he worked as a visiting scholar and postdoctoral scholar at UC Davis and New York University. His long-term research interests involve the discovery of novel bioactive*

*peptides and the development of novel delivery systems for precision oncology and probiotic targeting.*



*Dr. De Souza is a cancer immunologist whose research is focused on innate immune mechanisms in fibrotic diseases. She received her PhD in 2020 in the field of cancer biology and now pursues postdoctoral training at the Department of Stem Cell Biology and Regenerative Medicine at Stanford University.*

Every transformable attribute should be unique and specific to a certain step in the cascade of drug delivery. The cascade has recently been coined CAPIR for circulation, accumulation, penetration, internalization, and release of the drug.<sup>7</sup> The variation in tumor and patient type makes it very difficult to synthesize a nanoparticle that includes all the factors in the tumor uptake cascade without some form of stimuli responsive transformation at critical steps, as many favorable properties at one stage are adverse in another. Thus, the strategy of transformable nanoparticles holds promise for future advances in chemotherapeutics to tackle the barriers in cancer drug delivery.

## Blood circulation

Nanoparticle circulation is a pharmacokinetic barrier faced by all types of therapeutics.<sup>8</sup> The shape and size of the nanoparticles largely dictate their chemical properties and their interactions in blood. Every nanoparticle and drug must have some degree of hydrophilicity to traverse the bloodstream. Nanoparticles also bind to plasma proteins and form a corona which can alter the size and properties of the drug.<sup>8</sup> One such property is surface charge. Both positively charged nanoparticles and highly negatively-charged zeta potentials are cleared very quickly by the mononuclear phagocytic (MPS) system.<sup>7,8</sup>

The circulation time of the nanoparticle must be adjusted for each tumor type and case. For example, an extended circulation time is not necessarily a favorable factor if the nanoparticle cannot penetrate a tumor with poor biodistribution. In solid tumors, an excessively long plasma half-life could increase the potential of toxicity.<sup>8</sup> However, in leukemia as well in delivering chemotherapies, this serves as an advantage to have a longer circulation time.<sup>9,10</sup> To modulate the circulation time, the surface charge of the nanoparticle can be adjusted as previously mentioned. Several modification ligands and functional groups have been used for this purpose. Amines and imines are commonly used functional groups as their  $pK_a$ s are near



*Dr. Yuanpei Li completed his PhD training in biomedical engineering in 2009, and he conducted his postdoctoral research in drug delivery at UC Davis in 2012. He was promoted to Professional Researcher in 2012, Assistant Professor in 2016, Associate Professor in 2018, and Full Professor in 2021 at UC Davis. He is currently the charter member of the NIH Developmental Therapeutics*

*Study Section and an elected fellow of the American Institute for Medical and Biological Engineering (AIMBE). Li Lab is interested in developing innovative nanomedicine, cancer therapeutics, and molecular imaging agents that will have a tremendous impact on the treatment of cancer and other diseases.*



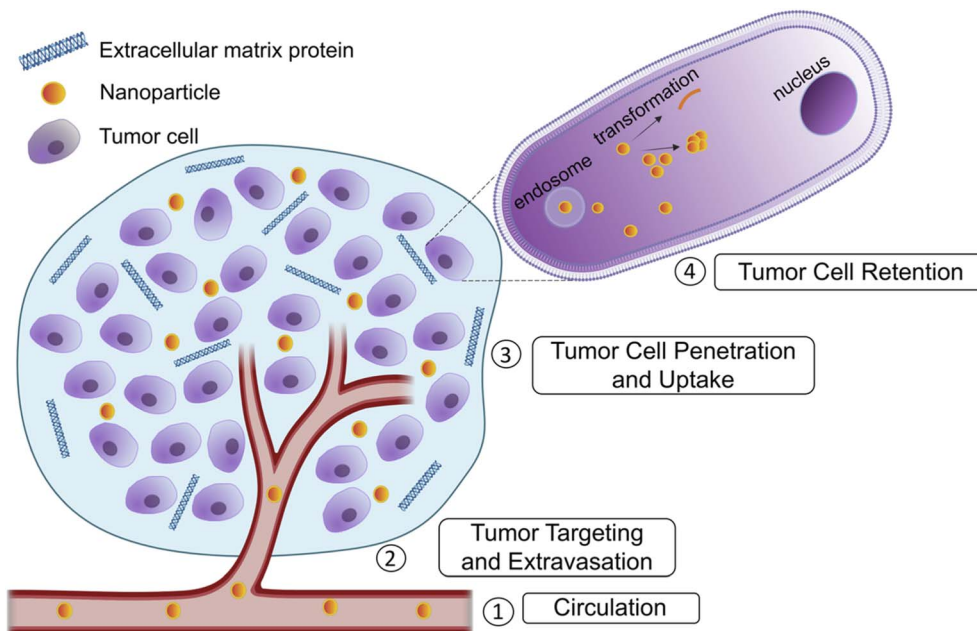


Fig. 1 Biological barriers in drug delivery to tumors. Several barriers preclude drug delivery to tumors. These include severe destabilizing conditions during circulation, targeting the tumor location and extravasation into the tumor blood vessel. Next, the drug must penetrate the excess extracellular matrix (ECM) proteins and reach the tumor cells and finally, the drug must be retained in the tumor cells and avoid premature efflux. Made using Biorender.com.

physiological conditions and they are subsequently protonated in more acidic environments. Zwitterionic ligands such as carboxy- or sulfobetaine have both positive and negatively charged groups which can be used to modify charge.<sup>11</sup>

Stability is a critical issue at this stage to prevent premature release of the encapsulated drug before the tumor site is reached. Our group and others have utilized a boronate ester cross-linkage between boronic acid and diols to improve nanoparticle stability until exposed to a lower pH in the target location.<sup>12,13</sup> Another strategy for stability is the use of disulfide cross-linkages, such as in the core of micelles, which can withstand the shear stress in blood and improve circulation and delivery of the drug cargo.<sup>14–16</sup> The cross-linking of micelles allows for a lower critical micelle concentration and prevents dissociation into unimers.

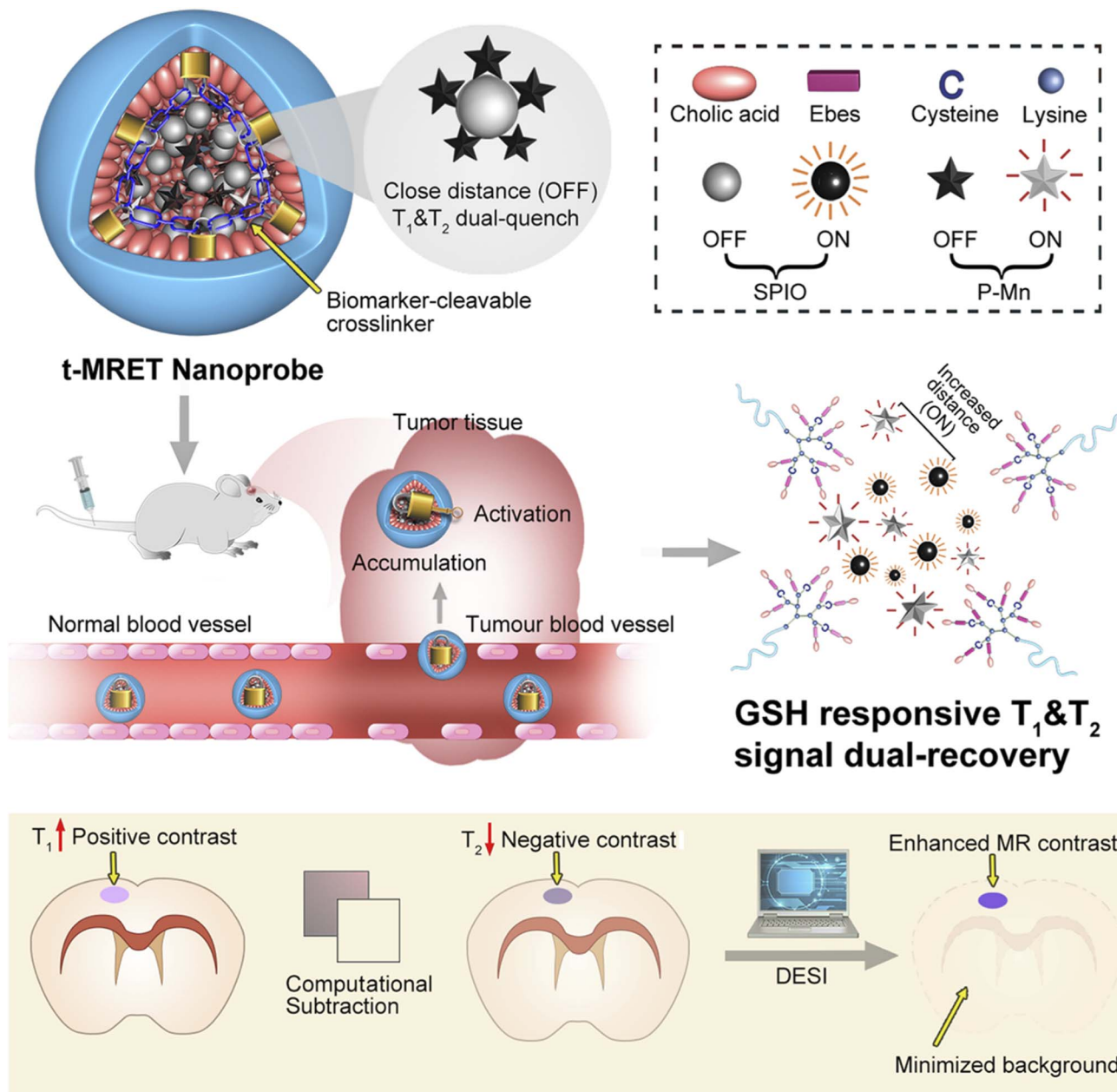
Stealth is another factor to include in the transformability of nanoparticles. To avoid immune clearance by the MPS there are a variety of methods. Most commonly a coating with polyethylene glycol (PEG)<sup>17,18</sup> is used to avoid clearance with concurrent stabilization of the nanomaterial. After the success of Doxil, PEGylated doxorubicin (DOX), many materials have followed suit in using this polymer and its derivatives. For example, we have previously demonstrated that PEG<sub>2000</sub> was used to create cross-linked nanoparticles that promote stability until their interaction with an acidic tumor microenvironment. PEGylation also provided surface charge modification. A Schiff base bond was used to PEGylate and cross-link the micelle and provide sensitivity to the acidic environment. The surface charge with PEG was much lower allowing for more stealth and stability in circulation until the tumor was reached in which the

smaller, higher charged internal nanoparticles released from PEG could enter the tumor.<sup>17</sup> In addition to PEG, many other hydrophilic polymers have been used to improve stability and evasion from the immune system such as PLGA [poly(lactic-co-glycolic acid)], POx [poly(2-oxazoline)] and other poly zwitterions.<sup>8</sup>

Alternatively, cell membranes can be used as a coating for nanomaterials to provide stealth in the blood.<sup>18</sup> Several different types of cell membranes have been used to promote diverse functions. To avoid immune clearance, red blood cell (RBC) membranes are used to coat nanoparticles.<sup>18–22</sup> Cell membranes are collected to form vesicles and loaded with the nanomaterial. Along with RBCs, platelets have also been used to avoid the MPS and they are easy to fractionize due to the lack of nuclei in both cell types.<sup>17</sup> Additionally, nanoparticles can be camouflaged using exosomes, small extracellular vesicles that are secreted by cells.<sup>23</sup> A recent study used exosomes from tumor cells exposed to DOX-loaded silicon nanoparticles as carriers allowing for better tumor accumulation and more extravasation from blood vessels.<sup>24</sup>

The protein corona effect is another phenomenon that nanoparticles face when in circulation. As the nanoparticle enters the bloodstream, plasma proteins accumulate on the surface and affect the zeta potential and nanoparticle size.<sup>25</sup> One example, nab-paclitaxel, utilizes human serum albumin to facilitate entry of the drug into tumors, and many other examples have followed its lead in utilization of serum proteins. Zhang *et al.* utilized the protein corona properties of liposomes functionalized with a peptide that interacts with apolipoproteins.<sup>26</sup> These liposomes exposed the receptor binding domain of the apolipoprotein and





## Dual-contrast Enhanced Subtraction Imaging (DESI)

Fig. 2 Schematic illustration of the TMRET nanotechnology and DESI utilizing GSH responsive transformation. Mn<sup>2+</sup> conjugated to pheophorbide a serves as both an 'enhancer' in the T<sub>1</sub> MRI signal and a 'quencher' in the T<sub>2</sub> MRI signal, whereas the SPIO nanoparticle acts as an 'enhancer' in the T<sub>2</sub> MRI signal and a 'quencher' in the T<sub>1</sub> MRI signal. P-Mn and SPIO were coloaded into a disulfide crosslinked micelle to form TMRET nanoparticles. Upon interaction with reduced GSH (glutathione) the disulfide bond is cleaved allowing for signal measurement. Reproduced with permission from (ref. 29). © Springer Nature, 2020.

deliver DOX for glioma treatment.<sup>26</sup> Hijacking the protein corona for delivery is a useful method to prevent the pitfalls of nanoparticle inactivation before cargo delivery.<sup>25</sup>

## Tumor targeting and extravasation

Targeting the tumor involves the use of ligands specific to tumor cells or tumor microenvironments. Many of the common

targeting ligands have sensitivity to pH,<sup>27</sup> enzyme reactivity,<sup>25</sup> temperature,<sup>28</sup> and other biomarkers.

One such example of the nanotheranostic response to stimuli is the reaction to glutathione (GSH). In our group, we developed a probe for magnetic resonance imaging which was able to disassemble upon exposure to reduced glutathione, present in excessive amounts in the tumor (Fig. 2).<sup>29</sup> Others have also utilized GSH for tumor targeting and transformation in





**Fig. 3** Design of transformable STICK-NPs and detailed multibarrier tackling mechanisms to brain tumors. The pair of targeting moieties selected to form sequential targeting in crosslinking (STICK) were maltobionic acid (MA), a glucose derivative, and carboxyphenylboronic acid (CBA), one type of boronic acid, and they were built into our well-characterized self-assembled micelle formulations (PEG-CA<sub>8</sub>). STICK-NPs were assembled by using a pair of MA<sub>4</sub>-PEG-CA<sub>8</sub> and CBA<sub>4</sub>-PEG-CA<sub>8</sub> with a molar ratio of 9 : 1 while intermicelle boronate crosslinkages, STICK, were formed between MA and CBA resulting in a larger nanoparticle size. Excess MA moieties were on the surface of the nanoparticles, while CBA moieties were first shielded inside the STICK to avoid nonspecific bindings. Hydrophobic drugs were loaded in the hydrophobic cores of secondary small micelles, while hydrophilic agents were trapped in the hydrophilic space between small micelles. In the following studies, we included several control micelle formulations including NM (no targeting), MA-NPs (single BBB targeting), and CBA-NPs (single sialic acid tumor targeting) nanoparticles (inserted table). In detail, STICK-NPs could overcome barrier 1 (destabilizing condition in the blood) by the intermicellar crosslinking strategy, barrier 2 (BBB/BBTB) by active GLUT1 mediated transcytosis through brain endothelial cells, and barrier 3 (penetration & tumor cell uptake) by transformation into secondary smaller micelles and reveal the secondary active targeting moiety (CBA) against sialic acid overexpressed on tumor cells in response to acidic extracellular pH in solid tumors. Reproduced with permission from (ref. 33). © Wiley (2020).

treatment.<sup>10,14,30</sup> Another condition that can be used for tumor targeting is the hypoxia often found in tumor microenvironments. Shen *et al.* utilized all-trans retinoic acid (ATRA) encapsulated in a nitroimidazole-modified hyaluronic acid-oxalate-camptothecin (CPT) conjugate to target the cancer stem cell niche in tumors. Under hypoxic conditions the ATRA is released causing differentiation of the cancer stem cells and exposing them to the CPT chemotherapeutic loaded in the nanoparticle.<sup>31</sup>

In brain tumors, an additional targeting barrier to bypass is the blood-brain-barrier (BBB). This barrier is composed of pericytes, astrocytes, and endothelial cells forming tight junctions which regulate the substances that can enter and exit the brain.<sup>32</sup> In our lab, we have utilized a transcytosis method to navigate this barrier for brain tumor therapeutics. Two functional moieties were used to ensure BBB entry and transformation at the tumor site. First, maltobionic acid was used to facilitate GLUT1 transcytosis across the BBB and second, 4-



carboxyphenylboronic acid was used to target sialic acid over-expressed in brain tumor cells (Fig. 3).<sup>33</sup>

## Tumor penetration and uptake

Regarding nanoparticle tumor penetration, the current consensus is that the EPR effect is responsible for the superior efficacy of nanoparticles for drug delivery to the tumor. The EPR effect cannot account for the excessive extracellular matrix (ECM) that surrounds many of the tumor types in which nanomaterials are effective.<sup>24,34</sup> The overall pathway includes perfusion into the intratumoral vessels, extravasation and then penetration into the tumor mass.<sup>36</sup> In the previous step, PEGylation provided the stealth needed for circulation. However, at this stage, entry into the tumor is limited by high PEG density.<sup>35</sup> Transcytosis can be used at this step to facilitate tumor uptake by modifying materials with tumor targeting agents.

Within the tumor, high interstitial pressure is an added barrier preventing tumor penetration. To bypass this issue, many nanoparticles include anti-angiogenic factors to normalize the vasculature. Recently, Li *et al.* developed a stimuli responsive nanoparticle that utilizes thrombin loaded nanomaterials that also simultaneously deplete tumor-associated platelets to decrease abnormal angiogenesis.<sup>36</sup> They showed nanomaterials composed of a poly(etherimide)-poly(lactic-co-

glycolic acid)<sub>2</sub> (PEI-PLGA<sub>2</sub>) copolymer for DOX encapsulation and an antibody R300 against platelets was functionalized on the surface through electrostatic interactions, allowing the final nanoparticle to release R300 and DOX at their targeted location to target platelets and tumor biomarkers.<sup>36</sup> In addition to standard anti-angiogenic drugs, nitric oxide (NO) can be delivered, which can modulate angiogenesis and also promote vascular homeostasis and endothelial cell functions.<sup>37</sup> Sung *et al.* made a NO delivery nanoparticle using a dinitrosyl iron complex [Fe( $\mu$ -SET)<sub>2</sub>(NO)<sub>4</sub>] as the NO donor and poly-lactic glutamic acid (PLGA) as the method of controlled release of NO which showed efficacy in hepatocellular carcinoma models.<sup>37</sup> Another method to decrease the higher interstitial pressure is to target the ECM proteins in the tumor microenvironment. The composition of the ECM is highly tumor dependent but generally includes collagen and fibrinogen.<sup>7</sup> A collagen targeting material was made by Yao and colleagues in the form of a nanoenzyme capsule containing collagenase nanocapsules with heavy-chain ferritin nanocages containing DOX. Once the nanozyme capsule complex reached the mildly acidic tumor environment, the collagenase capsule was degraded, and collagenase could be activated to degrade collagen. The ferritin nanocage also promoted tumor penetration along with having tumor targeting ability. This nanoparticle also alleviated the hypoxic tumor environment with these components.<sup>38</sup> Chen *et*

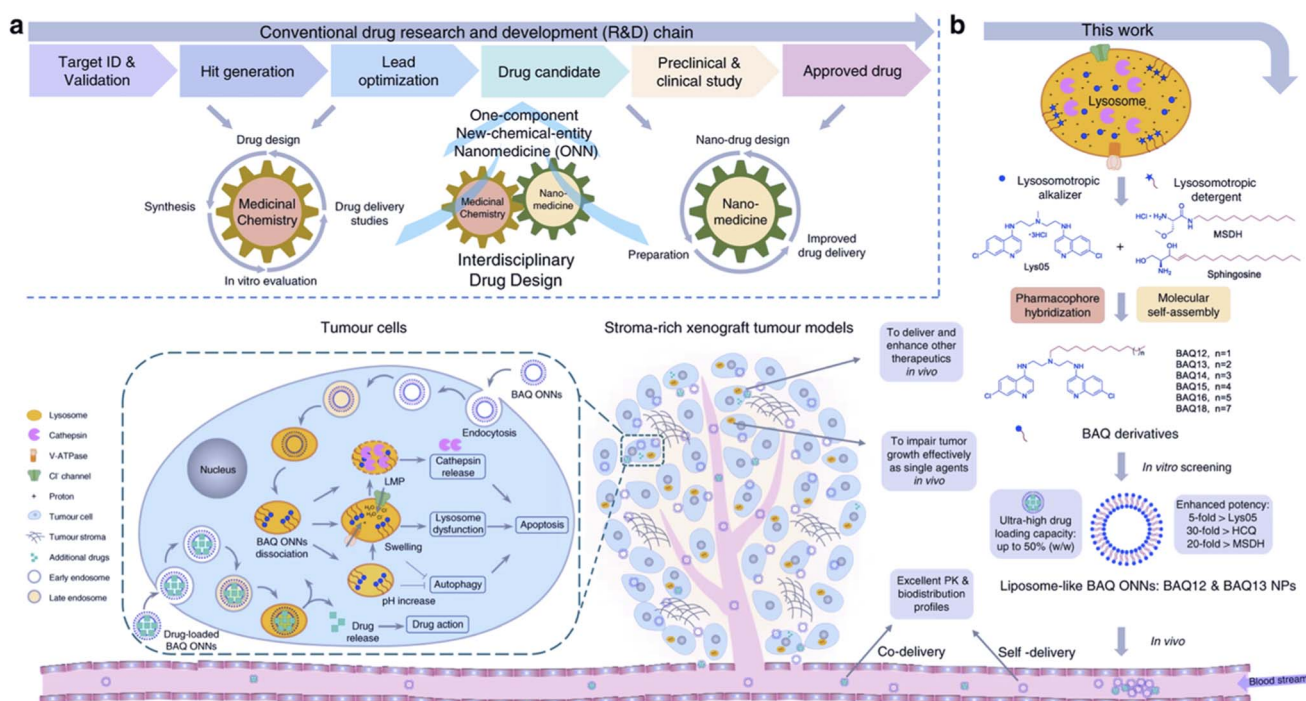


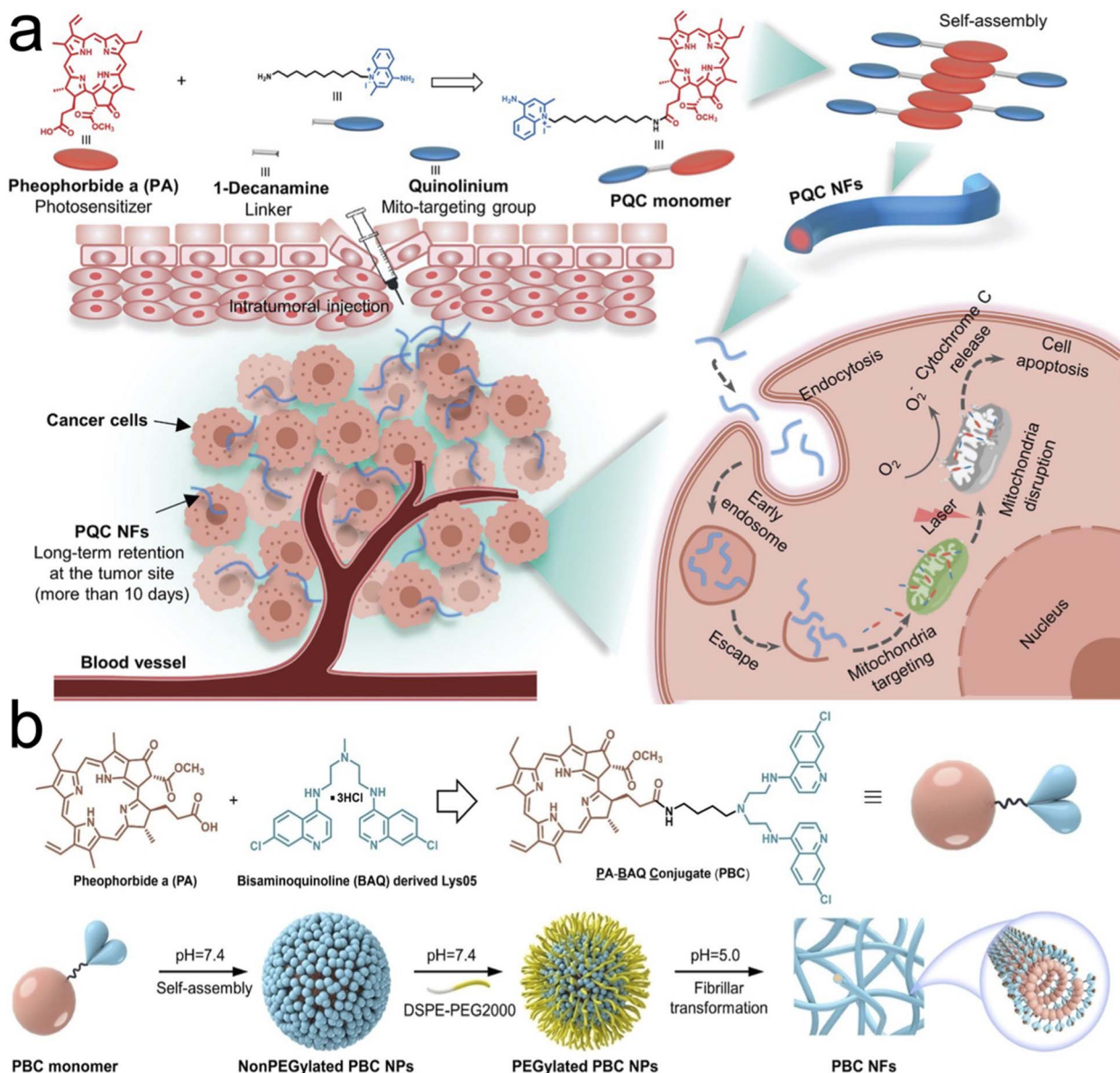
Fig. 4 Tumor targeting with BAQ ONNs. (a) An interdisciplinary drug design strategy is proposed to integrate the conventional fields of medicinal chemistry and nanomedicine. Drugs are named as one-component new-chemical-entity nanomedicines (ONNs), which are designed according to the strategies of conventional drug design and molecular self-assembly so that they could acquire the advantages from the perspectives of both drug discovery and drug delivery. (b) The proof-of-concept experiment in this work: discovery of self-delivering lysosomotropic bisaminoquinoline (BAQ) derivatives for cancer therapy. The BAQ derivatives, generated from the hybridisation of lysosomotropic detergents and the BAQ-based autophagy inhibitor, can self-assemble into BAQ ONNs that show enhanced functions *in vitro*, excellent delivery profiles and significant *in vivo* therapeutic effects as single agents. Moreover, they also possess high drug-loading efficiency to deliver an additional drug into tumour sites, thus generating a promising application of combination therapy. Reproduced from (ref. 43) (CC BY 4.0).



*al.* recently made another hypoxia stimulus responsive material using a one-step method to combine paclitaxel, catalase, human serum albumin, and chlorine e6 into HAS-Ce6-Cat-PTX nanoparticles. These nanoparticles started at 100 nm for optimal blood circulation and upon reaching the tumor became small protein-drug complexes of 20 nm. Catalase responded to the endogenous  $H_2O_2$  to form oxygen and alleviate the hypoxic environment.<sup>39</sup>

Size transformation is another strategy to improve tumor penetration and uptake. Many studies have utilized the

properties of large to small transformation at the tumor site to prolong circulation as well as increase uptake at the tumor site. The main strategies include detachment of small vesicles from hybrid large-small nanoparticles or some degradation of the hybrid particle, a shell coating which detaches upon reaching the target location, and finally self-shrinkage.<sup>40</sup> There are several different methods used to achieve these mechanisms. First, the use of pH will allow for transformation at a specific acidic tumor microenvironment. One ligand used was the amphiphilic copolymer PDPA<sub>30</sub>-*b*-PAMA<sub>15</sub> which is hydrophobic



**Fig. 5** Tumor retention through transformation into nanofibers and nanofibrils. (a) Synthesis of single small molecule-assembled mitochondria targeting nanofibers (PQC NFs). The PQC monomer is a conjugate of PA and quinolinium. PQC NFs exhibited nanomolar cytotoxicity by mediating mitochondria-targeting phototherapy and they were retained long-term at the tumor site. With these advantages, PQC NFs achieved robust anticancer effects *in vivo* with a 100% complete cure rate after the administration of only a single dose. (b) Chemical structure of the PBC monomer containing pheophorbide a (PA) and bisaminoquinolone derived Lys05. Self-assembling and transformation behaviors of PBC at pH 7.4 and pH 5.0. PBC transformation into nanofibrils allowed for long term retention in the tumor site in oral cancer xenograft models. Reproduced with permission from (ref. 51 and 52). © Wiley (2020 and 2022).



in physiological pH and becomes hydrophilic in acidic pH resulting in a decrease in size from 35 to 10 nm.<sup>41</sup> An even greater size decrease from 100 nm to 5 nm was seen with the use of 2,3-dimethylmaleicanhydride (DMA) which reacts in acidic conditions to amine groups and causes decomposition of a PCL-CDM-PAMAM/Pt system along with a charge reversal.<sup>42</sup>

Another facet of drug uptake includes uptake at the target location. Due to the size of many nanoparticles, uptake into the cell requires endocytosis resulting in subsequent trapping in the endosome and lysosome. One strategy to overcome this phenomenon is direct targeting of the lysosome. Lysosomal targeting is a viable strategy due to the dysregulation of lysosomal pathways when managing the higher metabolic requirements needed by tumor cells or to provide a method other than apoptosis for conventional chemotherapy-resistant cells. Our group has previously developed a lysosome-targeting small molecule that self assembles into a nanoparticle. Lysosome targeting caused disruption of its membrane combined with autophagy inhibition leading to potent efficacy in autophagy-dependent tumors (Fig. 4).<sup>43</sup> Other nanomaterials developed ways to avoid endosomal trapping through three main mechanisms, cell penetrating peptides (CPPs), polymer-based nanomaterials that can create pores in the endosome, or lipid-based vehicles that can fuse with the endosome membrane to escape.<sup>44</sup> Liposomes functionalized with an ionizable cationic lipid in their outer membrane can become protonated in the endosome and escape or disrupt the endosomal membrane.<sup>45</sup> Some recent studies with CPPs include the development of a TAT analog conjugated with a methoxy PEG (MPEG)-poly( $\epsilon$ -caprolactone) (PCL) diblock copolymer which was unable to form a complex with DNA without TAT CPP mediation.<sup>46</sup> CPPs often include short, positively charged peptide sequences that facilitate endosomal escape in response to a change in conformation upon reaching the lower pH endosome.

## Tumor retention

In tumor retention, the EPR effect is again called upon to describe the superior ability of nanoparticles to be retained in the tumor.<sup>2</sup> The retention is seen through the limited lymphatic clearance present in tumors.

Retention can be favored by transformation into various shapes apart from spherical vesicles that allow for decreased efflux of the drug. Nanoparticles in fiber conformations are more favorable for decreased tumor efflux while spherical particles are more favorable for circulation and tumor penetration<sup>40</sup> as well as intravenous injection.<sup>47</sup> Our group and others have developed transformable nanoparticles that prolong the drug retention at the tumor site by transformation into a nanofiber shape as a result of targeting receptor stimuli,<sup>48–50</sup> or pH at the target location.<sup>51,52</sup> Two such examples of nanofibers and nanofibril transformations are illustrated in Fig. 5. Other nanofibers using peptide-based self-assembly and transformation have been used in drug delivery to promote transformation at the tumor site which combine the benefits of tumor retention and biocompatibility.<sup>48–50</sup> A recent study by Borkowska *et al.* showed accumulation of mixed charged

nanoparticles that upon reaching the lysosome would aggregate into nanocrystals and be retained in the lysosome.<sup>53</sup>

Another method for tumor retention is to use small to large nanoparticle transformation. Aggregation of small nanoparticles at the site of the tumor prolongs the retention of the drug and improves efficacy. Additionally, nanoparticles can be optimized to include advantageous optical properties that allow for measurement of aggregation through emission or quenching of fluorescence<sup>54,55</sup> or other measurable signals. Smaller size nanoparticles allow for easier tumor penetration but are also more likely to be cleared faster. For optimal tumor retention, aggregates of smaller particles can utilize the advantages of a smaller size without premature clearance. Stimulus response at the tumor site will allow for selective aggregation and prevent nonspecific interactions. Methods for this transformation include click reactions, electrostatic interactions, phase transitioning, swelling or self-assembling to transform into larger sizes and aggregation.<sup>40</sup> One recent study by Hu *et al.* used a nanogel shell surface made of hyaluronic acid along with the enzyme, transglutaminase (TG). Upon tumor entry, TG catalyzed a peptide bond between lysine and glutamine allowing for 10 nm particles to aggregate into 120 nm in breast cancer models.<sup>56</sup>

Finally, tumor retention should be balanced with drug clearance to prevent systemic toxicity. An ideal nanoparticle should be retained long enough at the tumor site to exert its effect. A technique to ensure timely clearance particularly at nonspecific locations was used by Wang *et al.* where they entitled a tumor selective cascade activated self-retention system (TCASS). Their nanofibers underwent self-assembly at the tumor site while showing small molecule clearance in normal organs as the fibers became monomers.<sup>57</sup>

## Discussion/conclusion/perspective

The ability of nanomedicine to reach clinical translation requires more study into the pharmacokinetics and pharmacodynamics of nanomaterials. The heterogenous nature of tumors and patients is a challenge that should be addressed with adaptable nanomaterials specific to each case. New drug candidates along with improvement in preclinical models will allow for a more promising outlook for new chemotherapeutics. As seen in the discussion of these barriers, there are often contradictory conditions that promote increased efficacy at points of the delivery cascade. Additionally in the case of current personalized medicine, the patient and tumor type should be considered to provide maximum overall efficiency and most effective clinical translation. To summarize, nanoparticle blood circulation should be long enough to reach the target location while being concealed by the RES and MPS and should be stable enough to prevent premature drug release. Next, the nanoparticle should be able to penetrate the tumor and still be able to be internalized by the cell in the often-harsh tumor microenvironment. Finally, there should be tumor retention along with a timely clearance to prevent excessive toxicity. Stimulus-response allows nanoparticles to maximize effectiveness and provides the best outcome for a clinically



relevant therapeutic. Novel treatments that account for tumor barriers and can adapt to tumor stimuli have the potential to revolutionize cancer therapy.

## Conflicts of interest

There are no conflicts of interest to declare.

## Acknowledgements

The authors thank the financial support from the following funding sources NIH (R01DE029237, 9R01EB033677-06A1, and R01CA232845).

## References

- 1 R. L. Siegel, K. D. Miller, H. E. Fuchs and A. Jemal, Cancer statistics, 2022, *Ca-Cancer J. Clin.*, 2022, **72**(1), 7–33.
- 2 H. Kobayashi, R. Watanabe and P. L. Choyke, Improving conventional enhanced permeability and retention (EPR) effects; what is the appropriate target?, *Theranostics*, 2013, **4**(1), 81–89.
- 3 X. Liu, J. Jiang and H. Meng, Transcytosis – An effective targeting strategy that is complementary to “EPR effect” for pancreatic cancer nano drug delivery, *Theranostics*, 2019, **9**(26), 8018–8025.
- 4 S. Sindhvani, A. M. Syed, J. Ngai, B. R. Kingston, L. Maiorino, J. Rothschild, *et al.*, The entry of nanoparticles into solid tumours, *Nat. Mater.*, 2020, **19**(5), 566–575.
- 5 J. Iglesias, nab-Paclitaxel (Abraxane®): an albumin-bound cytotoxic exploiting natural delivery mechanisms into tumors, *Breast Cancer Res.*, 2009, **11**(1), S21.
- 6 D. D. Von Hoff, T. Ervin, F. P. Arena, E. G. Chiorean, J. Infante, M. Moore, *et al.*, Increased survival in pancreatic cancer with nab-paclitaxel plus gemcitabine, *N. Engl. J. Med.*, 2013, **369**(18), 1691–1703.
- 7 Q. Sun, Z. Zhou, N. Qiu and Y. Shen, Rational Design of Cancer Nanomedicine: Nanoproperty Integration and Synchronization, *Adv. Mater.*, 2017, **29**(14), 1606628.
- 8 S. Y. Fam, C. F. Chee, C. Y. Yong, K. L. Ho, A. R. Mariatulqabiah and W. S. Tan, Stealth Coating of Nanoparticles in Drug-Delivery Systems, *Nanomater.*, 2020, **10**(4), 787.
- 9 K. S. Yadav, S. Jacob, G. Sachdeva, K. Chuttani, A. K. Mishra and K. K. Sawant, Long circulating PEGylated PLGA nanoparticles of cytarabine for targeting leukemia, *J. Microencapsulation*, 2011, **28**(8), 729–742.
- 10 J. Qiu, R. Cheng, J. Zhang, H. Sun, C. Deng, F. Meng, *et al.*, Glutathione-Sensitive Hyaluronic Acid-Mercaptopurine Prodrug Linked *via* Carbonyl Vinyl Sulfide: A Robust and CD44-Targeted Nanomedicine for Leukemia, *Biomacromolecules*, 2017, **18**(10), 3207–3214.
- 11 G. Sanità, B. Carrese and A. Lamberti, Nanoparticle Surface Functionalization: How to Improve Biocompatibility and Cellular Internalization, *Front. Mol. Biosci.*, 2020, **7**, 587012.
- 12 Y. Li, W. Xiao, K. Xiao, L. Berti, J. Luo, H. P. Tseng, *et al.*, Well-defined, reversible boronate crosslinked nanocarriers for targeted drug delivery in response to acidic pH values and cis-diols, *Angew. Chem., Int. Ed. Engl.*, 2012, **51**(12), 2864–2869.
- 13 M. Nakahata and S. Sakai, Cross-Linking Building Blocks Using a “Boronate Bridge” to Build Functional Hybrid Materials, *ChemNanoMat*, 2019, **5**, 141–151.
- 14 Y. Li, K. Xiao, J. Luo, W. Xiao, J. S. Lee, A. M. Gonik, *et al.*, Well-defined, reversible disulfide cross-linked micelles for on-demand paclitaxel delivery, *Biomaterials*, 2011, **32**(27), 6633–6645.
- 15 K. Xiao, Q. Liu, N. Al Awwad, H. Zhang, L. Lai, Y. Luo, *et al.*, Reversibly disulfide cross-linked micelles improve the pharmacokinetics and facilitate the targeted, on-demand delivery of doxorubicin in the treatment of B-cell lymphoma, *Nanoscale*, 2018, **10**(17), 8207–8216.
- 16 L. Zhang, D. Jing, L. Wang, Y. Sun, J. J. Li, B. Hill, *et al.*, Unique Photochemo-Immuno-Nanoplatfrom against Orthotopic Xenograft Oral Cancer and Metastatic Syngeneic Breast Cancer, *Nano Lett.*, 2018, **18**(11), 7092–7103.
- 17 X. Xue, Y. Huang, R. Bo, B. Jia, H. Wu, Y. Yuan, *et al.*, Trojan Horse nanotheranostics with dual transformability and multifunctionality for highly effective cancer treatment, *Nat. Commun.*, 2018, **9**(1), 3653.
- 18 X. Zhen, P. Cheng and K. Pu, Recent Advances in Cell Membrane-Camouflaged Nanoparticles for Cancer Phototherapy, *Small*, 2019, **15**(1), e1804105.
- 19 C. M. Hu, L. Zhang, S. Aryal, C. Cheung and R. H. Fang, Erythrocyte membrane-camouflaged polymeric nanoparticles as a biomimetic delivery platform, *Proc. Natl. Acad. Sci. U. S. A.*, 2011, **108**(27), 10980–10985.
- 20 X. Xu, G. Yang, X. Xue, H. Lu, H. Wu, Y. Huang, *et al.*, A polymer-free, biomimicry drug self-delivery system fabricated *via* synergistic combination of bottom-up and top-down approaches, *J. Mater. Chem. B*, 2018, **6**(47), 7842–7853.
- 21 H. Liang, K. Huang, T. Su, Z. Li, S. Hu, P. U. Dinh, *et al.*, Mesenchymal Stem Cell/Red Blood Cell-Inspired Nanoparticle Therapy in Mice with Carbon Tetrachloride-Induced Acute Liver Failure, *ACS Nano*, 2018, **12**(7), 6536–6544.
- 22 Q. Pei, X. Hu, X. Zheng, S. Liu, Y. Li, X. Jing, *et al.*, Light-Activatable Red Blood Cell Membrane-Camouflaged Dimeric Prodrug Nanoparticles for Synergistic Photodynamic/Chemotherapy, *ACS Nano*, 2018, **12**(2), 1630–1641.
- 23 R. P. Carney, S. Hazari, T. Rojalin, A. Knudson, T. Gao, Y. Tang, *et al.*, Targeting Tumor-Associated Exosomes with Integrin-Binding Peptides, *Adv. Biosyst.*, 2017, **1**(5), 1600038.
- 24 T. Yong, X. Zhang, N. Bie, H. Zhang, F. Li, A. Hakeem, *et al.*, Tumor exosome-based nanoparticles are efficient drug carriers for chemotherapy, *Nat. Commun.*, 2019, **10**(1), 3838.
- 25 I. de Lázaro and D. J. Mooney, Obstacles and opportunities in a forward vision for cancer nanomedicine, *Nat. Mater.*, 2021, **20**(11), 1469–1479.



- 26 Z. Zhang, J. Guan, Z. Jiang, Y. Yang, J. Liu, W. Hua, *et al.*, Brain-targeted drug delivery by manipulating protein corona functions, *Nat. Commun.*, 2019, **10**(1), 3561.
- 27 M. Liu, L. Huang, W. Zhang, X. Wang, Y. Geng, Y. Zhang, *et al.*, A transistor-like pH-sensitive nanodetergent for selective cancer therapy, *Nat. Nanotechnol.*, 2022, 541–551.
- 28 N. Borys and M. W. Dewhirst, Drug development of lyso-thermosensitive liposomal doxorubicin: Combining hyperthermia and thermosensitive drug delivery, *Adv. Drug Delivery Rev.*, 2021, **178**, 113985.
- 29 Z. Wang, X. Xue, H. Lu, Y. He, Z. Lu, Z. Chen, *et al.*, Two-way magnetic resonance tuning and enhanced subtraction imaging for non-invasive and quantitative biological imaging, *Nat. Nanotechnol.*, 2020, **15**(6), 482–490.
- 30 K. Xiao, Q. Liu, N. Suby, W. Xiao, R. Agrawal, M. Vu, *et al.*, LHRH-Targeted Redox-Responsive Crosslinked Micelles Impart Selective Drug Delivery and Effective Chemotherapy in Triple-Negative Breast Cancer, *Adv. Healthcare Mater.*, 2021, **10**(3), e2001196.
- 31 S. Shen, X. Xu, S. Lin, Y. Zhang, H. Liu, C. Zhang, *et al.*, A nanotherapeutic strategy to overcome chemotherapeutic resistance of cancer stem-like cells, *Nat. Nanotechnol.*, 2021, **16**(1), 104–113.
- 32 W. Tang, W. Fan, J. Lau, L. Deng, Z. Shen and X. Chen, Emerging blood-brain-barrier-crossing nanotechnology for brain cancer theranostics, *Chem. Soc. Rev.*, 2019, **48**(11), 2967–3014.
- 33 H. Wu, H. Lu, W. Xiao, J. Yang, H. Du, Y. Shen, *et al.*, Sequential Targeting in Crosslinking Nanotheranostics for Tackling the Multibarriers of Brain Tumors, *Adv. Mater.*, 2020, **32**(14), e1903759.
- 34 Y. Liu, Y. Huo, L. Yao, Y. Xu, F. Meng, H. Li, *et al.*, Transcytosis of Nanomedicine for Tumor Penetration, *Nano Lett.*, 2019, **19**(11), 8010–8020.
- 35 Q. Zhou, C. Dong, W. Fan, H. Jiang, J. Xiang, N. Qiu, *et al.*, Tumor extravasation and infiltration as barriers of nanomedicine for high efficacy: The current status and transcytosis strategy, *Biomaterials*, 2020, **240**, 119902.
- 36 Z. Li, C. Di, S. Li, X. Yang and G. Nie, Smart Nanotherapeutic Targeting of Tumor Vasculature, *Acc. Chem. Res.*, 2019, **52**(9), 2703–2712.
- 37 Y. C. Sung, P. R. Jin, L. A. Chu, F. F. Hsu, M. R. Wang, C. C. Chang, *et al.*, Delivery of nitric oxide with a nanocarrier promotes tumour vessel normalization and potentiates anti-cancer therapies, *Nat. Nanotechnol.*, 2019, **14**(12), 1160–1169.
- 38 H. Yao, X. Guo, H. Zhou, J. Ren, Y. Li, S. Duan, *et al.*, Mild Acid-Responsive “Nanoenzyme Capsule” Remodeling of the Tumor Microenvironment to Increase Tumor Penetration, *ACS Appl. Mater. Interfaces*, 2020, **12**(18), 20214–20227.
- 39 Q. Chen, J. Chen, C. Liang, L. Feng, Z. Dong, X. Song, *et al.*, Drug-induced co-assembly of albumin/catalase as smart nano-theranostics for deep intra-tumoral penetration, hypoxia relieve, and synergistic combination therapy, *J. Controlled Release*, 2017, **263**, 79–89.
- 40 J. Chen, *et al.*, Smart transformable nanoparticles for enhanced tumor theranostics, *Appl. Phys. Rev.*, 2021, **8**(4), 041321.
- 41 W. Yu, R. Liu, Y. Zhou and H. Gao, Size-Tunable Strategies for a Tumor Targeted Drug Delivery System, *ACS Cent. Sci.*, 2020, **6**(2), 100–116.
- 42 H. J. Li, J. Z. Du, X. J. Du, C. F. Xu, C. Y. Sun, H. X. Wang, *et al.*, Stimuli-responsive clustered nanoparticles for improved tumor penetration and therapeutic efficacy, *Proc. Natl. Acad. Sci. U. S. A.*, 2016, **113**(15), 4164–4169.
- 43 Z. Ma, J. Li, K. Lin, M. Ramachandran, D. Zhang, M. Showalter, *et al.*, Pharmacophore hybridisation and nanoscale assembly to discover self-delivering lysosomotropic new-chemical entities for cancer therapy, *Nat. Commun.*, 2020, **11**(1), 4615.
- 44 E. Xu, W. M. Saltzman and A. S. Piotrowski-Daspit, Escaping the endosome: assessing cellular trafficking mechanisms of non-viral vehicles, *J. Controlled Release*, 2021, **335**, 465–480.
- 45 M. Schlich, R. Palomba, G. Costabile, S. Mizrahy, M. Pannuzzo, D. Peer, *et al.*, Cytosolic delivery of nucleic acids: The case of ionizable lipid nanoparticles, *Bioeng. Transl. Med.*, 2021, e10213.
- 46 K. Tanaka, T. Kanazawa, Y. Shibata, Y. Suda, T. Fukuda, Y. Takashima, *et al.*, Development of cell-penetrating peptide-modified MPEG-PCL diblock copolymeric nanoparticles for systemic gene delivery, *Int. J. Pharm.*, 2010, **396**(1–2), 229–238.
- 47 M. Tang, K. Lin, M. Ramachandran, L. Li, H. Zou, H. Zheng, *et al.*, A mitochondria-targeting lipid-small molecule hybrid nanoparticle for imaging and therapy in an orthotopic glioma model, *Acta Pharm. Sin. B*, 2022, **12**(6), 2672–2682.
- 48 L. Zhang, Y. Wu, X. Yin, Z. Zhu, T. Rojalin, W. Xiao, *et al.*, Tumor Receptor-Mediated *In Vivo* Modulation of the Morphology, Phototherapeutic Properties, and Pharmacokinetics of Smart Nanomaterials, *ACS Nano*, 2021, **15**(1), 468–479.
- 49 C. Sun, Z. Wang, K. Yang, L. Yue, Q. Cheng, Y. L. Ma, *et al.*, Polyamine-Responsive Morphological Transformation of a Supramolecular Peptide for Specific Drug Accumulation and Retention in Cancer Cells, *Small*, 2021, **17**(43), e2101139.
- 50 L. Zhang, D. Jing, N. Jiang, T. Rojalin, C. M. Baehr, D. Zhang, *et al.*, Transformable peptide nanoparticles arrest HER2 signalling and cause cancer cell death in vivo, *Nat. Nanotechnol.*, 2020, **15**(2), 145–153.
- 51 K. Lin, Z. Ma, J. Li, M. Tang, A. Lindstrom, M. Ramachandran, *et al.*, Single Small Molecule-Assembled Mitochondria Targeting Nanofibers for Enhanced Photodynamic Cancer Therapy *In Vivo*, *Adv. Funct. Mater.*, 2021, **31**(10), 2008460.
- 52 Z. Ma, K. Lin, M. Tang, M. Ramachandran, R. Qiu, J. Li, *et al.*, A pH-Driven Small-Molecule Nanotransformer Hijacks Lysosomes and Overcomes Autophagy-Induced Resistance in Cancer, *Angew. Chem., Int. Ed. Engl.*, 2022, e202204567.
- 53 M. Borkowska, M. Siek, D. V. Kolygina, Y. I. Sobolev, S. Lach, S. Kumar, *et al.*, Targeted crystallization of mixed-charge



- nanoparticles in lysosomes induces selective death of cancer cells, *Nat. Nanotechnol.*, 2020, **15**(4), 331–341.
- 54 X. Xue, Y. Huang, X. Wang, Z. Wang, R. P. Carney, X. Li, *et al.*, Self-indicating, fully active pharmaceutical ingredients nanoparticles (FAPIN) for multimodal imaging guided trimodality cancer therapy, *Biomaterials*, 2018, **161**, 203–215.
- 55 H. Wu, *et al.*, Rotatable Aggregation-Induced-Emission/Aggregation-Caused-Quenching Ratio Strategy for Real-Time Tracking Nanoparticle Dynamics, *Adv. Funct. Mater.*, 2020, **30**(15), 1910348.
- 56 Q. Hu, W. Sun, Y. Lu, H. N. Bomba, Y. Ye, T. Jiang, *et al.*, Tumor Microenvironment-Mediated Construction and Deconstruction of Extracellular Drug-Delivery Depots, *Nano Lett.*, 2016, **16**(2), 1118–1126.
- 57 H. W. An, L. L. Li, Y. Wang, Z. Wang, D. Hou, Y. X. Lin, *et al.*, A tumour-selective cascade activatable self-detained system for drug delivery and cancer imaging, *Nat. Commun.*, 2019, **10**(1), 4861.

