

# Chemical Science

Accepted Manuscript

This article can be cited before page numbers have been issued, to do this please use: A. Paul, W. Kosaka, B. Kumar, D. J. Mondal, H. Miyasaka and S. Konar, *Chem. Sci.*, 2024, DOI: 10.1039/D4SC04266B.



This is an Accepted Manuscript, which has been through the Royal Society of Chemistry peer review process and has been accepted for publication.

Accepted Manuscripts are published online shortly after acceptance, before technical editing, formatting and proof reading. Using this free service, authors can make their results available to the community, in citable form, before we publish the edited article. We will replace this Accepted Manuscript with the edited and formatted Advance Article as soon as it is available.

You can find more information about Accepted Manuscripts in the [Information for Authors](#).

Please note that technical editing may introduce minor changes to the text and/or graphics, which may alter content. The journal's standard [Terms & Conditions](#) and the [Ethical guidelines](#) still apply. In no event shall the Royal Society of Chemistry be held responsible for any errors or omissions in this Accepted Manuscript or any consequences arising from the use of any information it contains.

## ARTICLE

CO<sub>2</sub>-actuated Spin Transition Tuning in an Interdigitated Hofmann-type Coordination PolymerAbhik Paul,<sup>a</sup> Wataru Kosaka,<sup>bc</sup> Bhart Kumar,<sup>a†</sup> Dibya Jyoti Mondal,<sup>a†</sup> Hitoshi Miyasaka,<sup>\*bc</sup> Sanjit Konar<sup>\*a</sup>Received 00th January 20xx,  
Accepted 00th January 20xx

DOI: 10.1039/x0xx00000x

The increased anthropogenic emission level of CO<sub>2</sub> urges the development of CO<sub>2</sub>-responsive materials, but is it possible to regulate the inherent electronic properties through weak physisorption of a ubiquitous gas like CO<sub>2</sub>? Herein, we intended to answer this imperative question by the first case of CO<sub>2</sub>-actuated variable spin-state stabilisation in an interdigitated Hofmann-type coordination polymer [Fe<sup>II</sup>Pd(CN)<sub>4</sub>L<sub>2</sub>] (**1**, L = methyl isonicotinate), showing a wide shift in transition temperature ( $T_{eq}$ ) from 178 K at  $P_{CO_2} = 0$  kPa to 229 K at  $P_{CO_2} = 100$  kPa. Interestingly, the emergence of a stepped behaviour in the heating process below  $P_{CO_2} = 10$  kPa and overlapping magnetic susceptibility values above  $P_{CO_2} = 10$  kPa elucidate the selective LS state stabilisation solely correlated to the extent of CO<sub>2</sub> accommodation. Based on the magnetic response and phase transition diagrams obtained under respective  $P_{CO_2}$ , a plausible scenario of the spin-state switching can be interpreted as (**1**<sub>ls</sub> + **1**'<sub>hs</sub>) → (**1**<sub>hs</sub> + **1**'<sub>ls</sub>) → **1**<sub>hs</sub> at  $P_{CO_2} \leq 10$  kPa, **1**'<sub>ls</sub> → **1**<sub>hs</sub> at 100 kPa <  $P_{CO_2} < 32$  kPa and **1**'<sub>ls</sub> → **1**'<sub>hs</sub> → **1**<sub>hs</sub> at 100 kPa, where **1**, and **1**' represents CO<sub>2</sub>-free and CO<sub>2</sub>-encapsulated states, respectively. The cooperative CO<sub>2</sub> sorption with SCO based on the varied CO<sub>2</sub> pressure corroborates a novel case for developing CO<sub>2</sub>-responsive magnetic materials henceforth.

## Introduction

Switchable magnetic materials that can be reversibly interconverted between two stable states in response to an external stimulus are promising candidates for potential memory devices.<sup>1-5</sup> Metal complexes, such as metal-organic frameworks (MOFs)<sup>6-8</sup> or porous coordination polymers (PCPs),<sup>9, 10</sup> that are capable of accommodating guest molecules are of high interest in this regard as the inherent porous nature can be used to separate similar guest species<sup>11-13</sup> or even exhibit guest-induced changes in their intrinsic properties,<sup>14</sup> including emission,<sup>15</sup> magnetic<sup>16, 17</sup> and conductive properties,<sup>17</sup> amongst others.<sup>18-21</sup>

Preceded by the remarkable example of guest-responsive bidirectional spin-state switching,<sup>22, 23</sup> the spin-crossover (SCO) research outcome investigated the influence of subtle interactions exerted by small guest molecules on effective spin-state stabilisation of the PCPs.<sup>24-26</sup> Nonetheless, the use of ubiquitous gas molecules (like N<sub>2</sub>, O<sub>2</sub> or CO<sub>2</sub>) to modulate SCO behaviour in PCPs is underdeveloped,<sup>27-29</sup> as the significant

variation of the crystal lattice volume resulting from the change in spin-state with relatively weak physisorption of the gas remains highly unlikely,<sup>30-32</sup> compared to the chemical pressure<sup>33</sup> exerted by the guests like small organic molecules or solvents.<sup>34, 35</sup> Recent advances in the gas-responsive magnetic phase transitions revolve around utilising the nanometric pores,<sup>36, 37</sup> open metal sites,<sup>38, 39</sup> use of paramagnetic gases,<sup>40</sup> or even the interlayer charge transfer<sup>41-43</sup> by manipulating the electronic states. However, obtaining a significant SCO response only through the physisorption of a gas like CO<sub>2</sub> can be narrowed down to a monomeric Co<sup>II</sup> complex<sup>44</sup> and a 3D pseudo-Hofmann type framework.<sup>45</sup> While the former case demonstrates the SCO induction in the CO<sub>2</sub>-admixed state, the latter forfeits the SCO activity. Herein, we bridge this leap in the literature by reporting the first case of fine-tuning the spin states of an interdigitated Hofmann-type PCP [Fe<sup>II</sup>Pd(CN)<sub>4</sub>L<sub>2</sub>] (**1**, L = methyl isonicotinate), solely based on the selective physisorption of CO<sub>2</sub> molecules in the framework. Traditionally, for a flexible porous crystal, the "breathing effect" is demonstrated by a drastic expansion/contraction in the pore

<sup>a</sup> Molecular Magnetism Lab, Department of Chemistry  
Indian Institute of Science Education and Research, Bhopal, Madhya Pradesh,  
India-462066.

E-mail: [skonar@iiserb.ac.in](mailto:skonar@iiserb.ac.in)

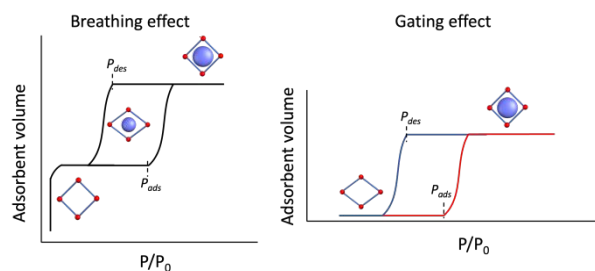
<sup>b</sup> Institute for Materials Research, Tohoku University, 2-1-1 Katahira, Aoba-ku,  
Sendai 980-8577, Japan.

<sup>c</sup> Department of Chemistry, Graduate School of Science, Tohoku University, 6-3  
Aramaki-Aza-Aoba, Aoba-ku, Sendai 980-8578, Japan.

E-mail: [miyasaka@imr.tohoku.ac.jp](mailto:miyasaka@imr.tohoku.ac.jp)

† these authors contributed equally.

Supplementary Information available: [Experimental and Crystallographic details, additional structural views, PXRD patterns, FT-IR spectra, TGA data, and additional magnetic measurement information]



Scheme 1. (left) Breathing effect vs. (right) gating effect in gas adsorption of porous coordination polymers.



## ARTICLE

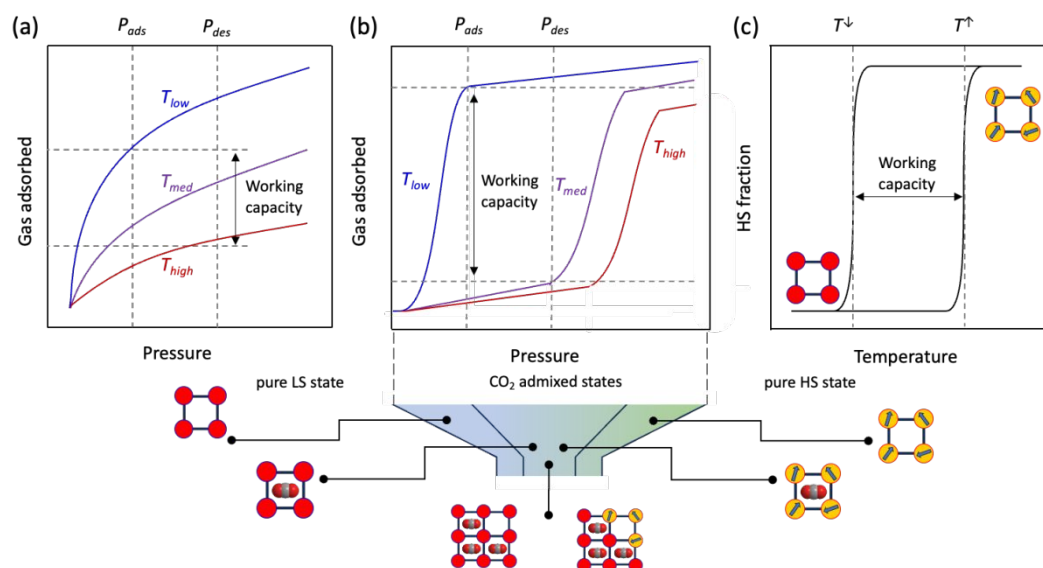


Figure 1. Idealised adsorption isotherms and the cooperative spin-transition mechanism. (a,b) Comparison of the working capacities for idealised gas adsorption isotherms of (a) classical and (b) cooperative adsorbents using a smaller temperature swing, (c) temperature-dependent hysteretic spin transition. (below) Schematic representation of the cooperative spin-transition under  $\text{CO}_2$  atmosphere, pure LS states at low temperature before  $\text{CO}_2$  adsorption ( $1_s$ ), followed by  $\text{CO}_2$  admixed states ( $1'$ ), based on  $T_{GO}$  and  $T_{ST}$  and pure HS states above  $T_{GC}$ .  $T_{GO}$ ,  $T_{GC}$  and  $T_{ST}$  correspond to gate opening, gate closing and spin transition temperatures, respectively.

volume upon increasing the partial pressure of the adsorbent, usually leading to a two-step gas uptake, constituted of (i) a transition from the originally opened pore to a closed pore, and (ii) opening of the closed pore (Scheme 1, left). On the other hand, the abrupt rise in the adsorption capacity due to the structural change or oscillations induced by the guest admission/ release is referred to as the “gating effect” (Scheme 1, right), which is much more diverse and involves intricate structural flexibility than simple expansion/contraction.<sup>14, 46</sup>

Compared to the typically observed classical type I adsorption isotherms (Figure 1a), a more energetically favourable cooperative transition constitutes adsorption over a narrow pressure range and engages high working capacities defined as the amount of gas adsorbed (Figure 1b). In a temperature scale, the consecutive temperatures of such a bistable process can be defined as  $T_{GO}$  and  $T_{GC}$  (GO, gate opening and GC, gate closing, for adsorption and desorption, respectively), and the difference between them comprises the admixed state, based on the mode of temperature swing. Interestingly, such a “gating effect” can be correlated to the cooperative SCO dynamics where spin-state change defines the working capacity between the two states (Figure 1c) by a thermal hysteresis loop ( $\Delta T = T_{heat} - T_{cool}$ ).<sup>47</sup> However, to successfully integrate the SCO behaviour under the particular effect of physisorption, *i.e.*, without the coordination to open metal centres or any of the functional groups, the adsorbate must (i) possess a flexible and porous

structural pattern to allow reversible insertion and removal of the adsorbent and (ii) the adsorbate-adsorbent interactions must be present as a subtle balance between the exerted chemical pressure in favour of the HS state and the electrostatic interactions in favour of the LS state, to regulate high cooperativity in the crystal lattice. In addition, the adsorbent must possess a necessary dipole or quadrupole moment that promotes insertion into the adsorbate framework.

Inspired by our earlier demonstration of the modulation of cooperativity from single-to-four-step transition by de/resolution of MeOH molecules in a 2D Hofmann-type PCP **1**·1.3MeOH,<sup>48</sup> we sought to rationalise the system under the effect of a supercritical gas, like  $\text{CO}_2$ , which could only impart weak dispersive interactions in the system. Notably, removal of the MeOH molecules from **1**·1.3MeOH exerts stronger  $\pi$ -stacking interactions between the panelling ligands, leading to our assumption that the intriguing gate-opening/closing mechanism might be achieved under the influence of  $\text{CO}_2$ . Herein, we report the first example of a  $\text{CO}_2$ -actuated spin transition tuning in **1**, associated with a wide transition temperature shift from 171 K (cooling)/185 K (heating) at  $P_{\text{CO}_2} = 0$  kPa to 213 K (cooling)/244 K (heating) at  $P_{\text{CO}_2} = 100$  kPa with a maximum thermal hysteresis loop of  $\sim 65$  K at  $P_{\text{CO}_2} = 10$  kPa. The highly selective  $\text{CO}_2$  sorption and  $\text{CO}_2$ -responsive spin-state stabilisation can be tuned by varying the amount of  $\text{CO}_2$  uptake, *i.e.*,  $P_{\text{CO}_2}$ .



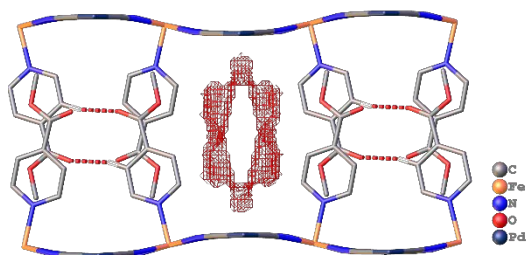


Figure 2. Interdigitated structure of framework **1**-1.3MeOH, stabilised by inter-ligand hydrogen bonding and lone pair- $\pi$  interactions, and adsorbent accessible voids shown along crystallographic axis  $a$ . Solvent MeOH molecules and H atoms are omitted for visual clarity.

## Results and discussion

Single crystal X-ray diffraction analysis on **1**-1.3MeOH showed that each of the Fe<sup>II</sup> atoms is coordinated axially by two methyl isonicotinate ligands and equatorially by the cyanide linkers of four [Pd(CN)<sub>4</sub>]<sup>2-</sup> units, forming a {Fe[Pd(CN)<sub>4</sub>]}<sub>∞</sub> grid with Fe<sub>2</sub>Pd<sub>2</sub> square windows. Two such grids are arranged by inter-ligand hydrogen bonding and lone pair- $\pi$  interactions between the carboxylate groups and  $\pi$   $e^-$  cloud of the two adjacent pyridyl rings, resulting in an interdigitated (2D) framework (Figure 2).

As indicated by the thermogravimetric analysis, framework **1** possesses excellent thermal stability up to 230 °C (Figure S1, ESI). Comparison of the PXRD spectrum of **1** with the parent framework **1**-1.3MeOH showed the framework pattern in the desolvated phase is preserved (Figure S2, ESI), although a structural phase transition is evident from the shifting of peaks in the middle region ( $2\theta = 15$ –25°). FTIR spectra of **1**-1.3MeOH and **1** indicate that the bonding of **1**-1.3MeOH is preserved in **1** (Figure S3, ESI). The variable temperature PXRD diffraction analyses on **1** showed thermally induced-phase transition accompanied by SCO, as indicated by the peak shift near the SCO transition temperature in both cooling and heating processes (Figure S4, ESI). Structural flexibility deduced for **1** to house small guest molecules like MeOH encouraged us to check its adsorption capability for any gas molecules. However, no adsorption for N<sub>2</sub> (77 K) and O<sub>2</sub> (90 K) was observed even at 120 K (for both N<sub>2</sub> and O<sub>2</sub>, Figure S5, ESI). On the contrary, above  $T \geq 195$  K, a sharp transition in the CO<sub>2</sub> adsorption appeared, ~15 kPa CO<sub>2</sub> pressure ( $P_{CO_2}$ ), which resulted in the gate opening (GO)

transition, and on increasing  $P_{CO_2}$ , reached an adsorbed amount of ~50 mlSTP g<sup>-1</sup> (~1 molecule per formula unit) at 100 kPa (Figure 3a). The GO pressure (for adsorption) and GC pressure (for desorption) steadily increased with temperature increase (up to 230 K). The temperature dependence of the GO and GC pressure obeyed the Clausius-Clapeyron relationship,  $d(\ln P_G)/d(\ln T_G^{-1}) = \Delta H_{trans}/R_g$ , where  $\Delta H_{trans}$  is the variation in the transition enthalpy, and  $R_g$  is the universal gas constant (Figure 3c and Figure S6-S7, ESI), with the estimated enthalpy values of -27 kJmol<sup>-1</sup> and -52 kJmol<sup>-1</sup> for GO and GC, respectively.<sup>49</sup> The gated behaviour was also characterised by the isobar plots (Figure 3b), and for both cases, wide hysteresis was observed (Figure S6, ESI). Based on these data, the phase diagram of **1** under CO<sub>2</sub> ( $T$  vs.  $P_{CO_2}$  plot in Figure 3c) was created for the GO and GC processes, revealing an apparent phase transition between **1** and **1**-CO<sub>2</sub>, respectively.

Since **1** possesses a more restricted accessible pore, *i.e.*, structural reorganisation accessible only under the influence of a small guest, we expected an interplay of SCO response with CO<sub>2</sub> adsorption. To check the consequence of the CO<sub>2</sub>-gated behaviour in the respective magnetic properties of **1**, variable temperature magnetic susceptibility measurements (10–300 K) at 0.5 Kmin<sup>-1</sup> under an external magnetic field ( $H_{dc}$ ) of 1 kOe were conducted under varied CO<sub>2</sub> pressure using a home-built gas cell (experimental details, ESI). First, after loading the sample in the magnetometer, the gas cell was filled with 100 kPa He (instead of vacuum) to enhance thermal conductivity. Upon cooling, a HS-to-LS transition was observed at 171 K (171 K *in vacuo*), while a complete LS-to-HS transition was observed upon heating at 185 K (186 K *in vacuo*) revealing a bistable region of 14 K ( $\Delta T = T_H - T_C$ ; Figure 4a, closed circle), which perfectly reproduces the SCO behaviour ( $T_{eq} \sim 178$  K;  $T_{eq} = (T_H + T_C)/2$ , where  $T_{eq}$ ,  $T_H$ , and  $T_C$  refer to the average temperature of ST, transition temperature in heating and cooling mode, respectively) of the guest-free framework **1** under vacuum, (Figure 4a, open circle). Notably, the coincidence of ST phenomena in these two cases dismissed the possibility of any additional LS state stabilisation under the effect of applied gas pressure. Although the slight changes in the transition temperatures ( $T_C$  and  $T_H$ ) and the thermal hysteresis ( $\Delta T$ , 15 K *in vacuo* vs. 14 K under 100 kPa He) can be attributed to the modification in experimental setups.

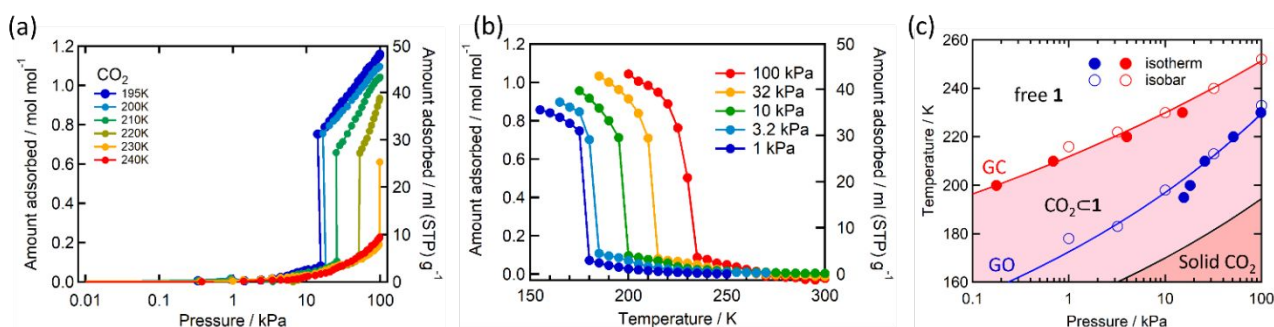
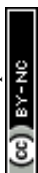


Figure 3. CO<sub>2</sub> adsorption in **1** studied as (a) isotherms at different temperatures, (b) isobars at different CO<sub>2</sub> pressures (solid lines are a guide for the eye), and (c) phase diagram for **1**/**1**-CO<sub>2</sub> determined from these measurements. The red (GC) and blue (GO) lines represent the fitting curves based on the Clausius-Clapeyron equation (ESI). The black solid line represents the saturated vapor pressure curve, distinguishing between the solid and gas phases of bulk CO<sub>2</sub>.





## ARTICLE

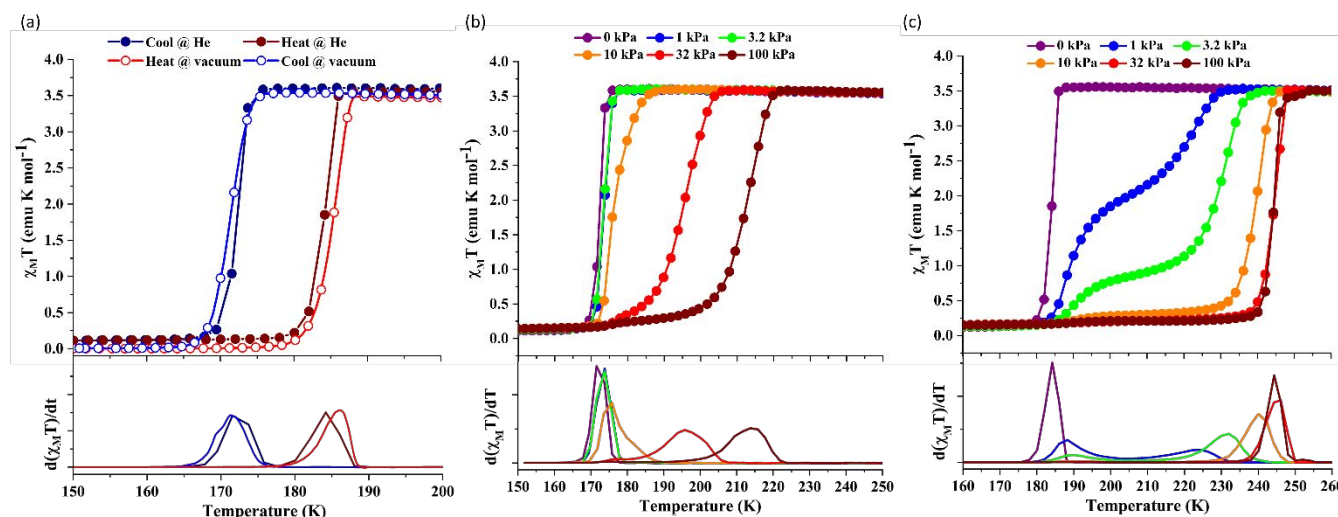


Figure 4. Variation of the magnetic properties of Framework 1 under  $\text{CO}_2$  adsorption under  $H_{dc} = 1\text{ kOe}$ . (a) magnetic susceptibility plots in the absence of any gas (open circles) and under 100 kPa He gas (filled circles). (b) The  $\text{CO}_2$  pressure dependence of the magnetic susceptibility measurements in cooling and (c) heating mode. First derivative plots are displayed at the bottom.

Next,  $\text{CO}_2$  gas at  $P_{\text{CO}_2} = 1, 3.2, 10, 32,$  and  $100\text{ kPa}$  was introduced in the cell at  $300\text{ K}$ , and the M-T measurements at  $H_{dc} = 1\text{ kOe}$  were performed consecutively in the cooling and heating mode ( $10\text{--}300\text{ K}$ ). For the cooling mode shown in Figure 4b, a one-step transition from HS-to-LS was observed with a gradual increase in the ST temperature ( $T_c$ :  $173\text{ K}$  at  $P_{\text{CO}_2} = 1.0\text{ kPa}$  to  $213\text{ K}$  at  $P_{\text{CO}_2} = 100\text{ kPa}$ ) with increased  $\text{CO}_2$  pressure. Meanwhile, the LS-to-HS transition in the heating mode appeared in a stepwise fashion at  $P_{\text{CO}_2} \leq 10\text{ kPa}$ , in which  $T_{H(1)}$  for the transition at lower temperature was approximately at  $188\text{ K}$  in the all  $P_{\text{CO}_2}$  range of  $1\text{--}10\text{ kPa}$ , while  $T_{H(2)}$  for the transition at higher temperature was increased from  $224\text{ K}$  ( $P_{\text{CO}_2} = 1.0\text{ kPa}$ ) to  $240\text{ K}$  ( $P_{\text{CO}_2} = 10\text{ kPa}$ ), elucidating the physisorption of the  $\text{CO}_2$  molecules in the framework stabilise the LS state. Interestingly, the  $T_c$  and  $T_{H(2)}$ , defined by the peak maxima of  $\delta\chi_M T/\delta T$  vs  $T$  plot (Figure 4, bottom), differ significantly under the same  $P_{\text{CO}_2}$ , indicating the presence of thermal hysteresis ( $\Delta T$ ) with a temperature spread up to  $\sim 65\text{ K}$  at  $P_{\text{CO}_2} = 10\text{ kPa}$  (Figure 4, table S1, ESI). Similarly, the observed  $T_{eq}$  variation correlates well with the result obtained from  $\text{CO}_2$  adsorption, which indicates that the abrupt SCO behaviour observed for **1** under the  $\text{CO}_2$  atmosphere is mainly associated with the gate-opening  $\text{CO}_2$  adsorption process.

Apparently, the emergence of the stepped behaviour in the heating process under low  $\text{CO}_2$  pressure ( $P_{\text{CO}_2} < 10\text{ kPa}$ ) intrigued us to investigate the plausible scenario that occurs during the transition under the  $\text{CO}_2$  atmosphere. The phase, as well as spin state, for each process strongly depends on a

relationship of three factors (i) the  $\text{CO}_2$  occupation rate in the compound, (ii) GO and GC temperatures at each  $\text{CO}_2$  pressure applied, and (iii) intrinsic ST temperatures of pristine **1** and the  $\text{CO}_2$ -accommodated phase **1'**. Furthermore, the nature of each phase is basically determined by the cooling process under an applied  $\text{CO}_2$  pressure.

As evidenced from the phase diagram, the GO process operates in the temperature range of  $\sim 160$  to  $230\text{ K}$ , while the GC process is valid in the temperature region of  $\sim 190\text{--}250\text{ K}$ . Thus, based on the  $P_{\text{CO}_2}$  applied, a variation of the LS state stabilisation for  $\text{CO}_2$ -admixed state (**1'**), is presumed eventually in the temperature range of  $\sim 190\text{--}230\text{ K}$  (Figure 5, ESI), based on the amount of  $\text{CO}_2$  accommodated in the framework.

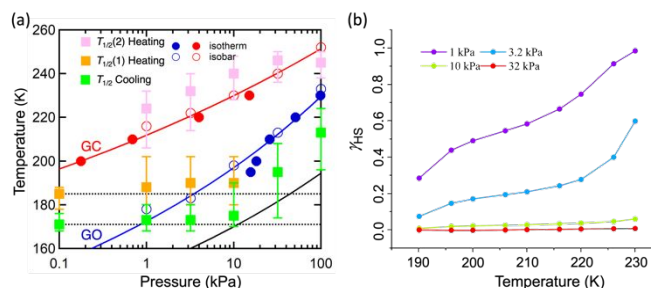
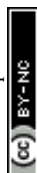


Figure 5. (a) Correlation of the gated  $\text{CO}_2$  sorption behaviour with the SCO transition temperatures of framework **1** under variable  $\text{CO}_2$  pressure in the temperature range of  $160\text{--}260\text{ K}$ ; (b) HS fraction population ( $\gamma_{\text{HS}}$ ) of **1** under variable  $\text{CO}_2$  pressure ( $P_{\text{CO}_2} = 1$  to  $32\text{ kPa}$ ) in the temperature range of  $190\text{--}230\text{ K}$ .



## ARTICLE

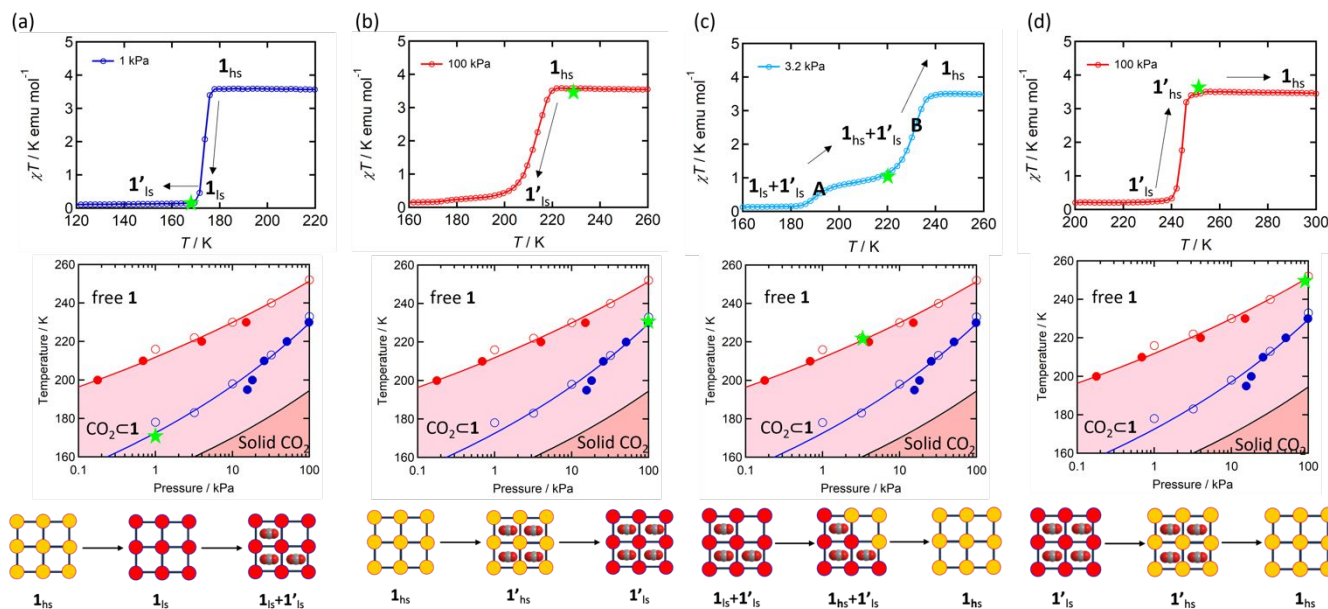


Figure 6. (top) Comparative magnetic transition plots under the influence of  $\text{CO}_2$  atmosphere in cooling (a, 1.0 kPa; b, 100 kPa) and heating (c, 3.2 kPa; d, 100 kPa) cycles; (bottom) the GO and GC temperatures denoted by green asterisk in the respective phase diagram, and representative cartoon diagram of the SCO phenomenon occurring between different spin states of the framework **1**. The red (GC) and blue (GO) lines in the phase diagram represent the fitting curves based on the Clausius-Clapeyron equation.

To delineate the magnetic transition under  $\text{CO}_2$  sorption, the overall process can be described by a total of four states, *i.e.*, without  $\text{CO}_2$  ( $\mathbf{1}_{\text{ls}}$ ,  $\mathbf{1}_{\text{hs}}$ ) and with  $\text{CO}_2$  ( $\mathbf{1}'_{\text{ls}}$ ,  $\mathbf{1}'_{\text{hs}}$ ). In the cooling process at  $P_{\text{CO}_2} = 1$  kPa, the ST at 173 K is owed to the intrinsic ST of pristine **1**, exhibiting a change from  $\mathbf{1}_{\text{hs}} \rightarrow \mathbf{1}_{\text{ls}}$ , because of the presence of  $\text{CO}_2$  adsorption GO at 170 K, namely, the  $\mathbf{1}_{\text{ls}}$  phase adsorbed  $\text{CO}_2$ . Notably, the magnetic susceptibility changes around this temperature (Figure 6a, green asterisk) manifest that the transition from  $\mathbf{1}_{\text{ls}}$  to  $\mathbf{1}'_{\text{ls}}$  might not be perfect due to the slow  $\text{CO}_2$  adsorption kinetics, and the two states are mixed at temperatures below 170 K ( $\mathbf{1}_{\text{hs}} \rightarrow \mathbf{1}_{\text{ls}} \rightarrow \mathbf{1}'_{\text{ls}} + \mathbf{1}_{\text{ls}}$ , for  $P_{\text{CO}_2} = 1$  kPa, Figure 6a). Whereas for  $P_{\text{CO}_2} > 10$  kPa, the GO process occurs in the range of 200–230 K, and the gradual transition to diamagnetic (LS) state occurs after or with the  $\text{CO}_2$  adsorption ( $\mathbf{1}_{\text{hs}} \rightarrow \mathbf{1}'_{\text{hs}} \rightarrow \mathbf{1}'_{\text{ls}}$ , for  $P_{\text{CO}_2} = 100$  kPa, Figure 6b). Therefore, in the cooling cycle for  $P_{\text{CO}_2} > 10$  kPa, the  $\text{CO}_2$ -accommodated phase prevailed because of  $T_{\text{GO}} > T_{\text{C}}$ ; the  $\mathbf{1}_{\text{hs}}$  phase adsorbed  $\text{CO}_2$ , indicating  $\mathbf{1}_{\text{hs}} \rightarrow \mathbf{1}'_{\text{hs}}$ , followed by the ST at  $T_{\text{C}}$ . However, the  $\text{CO}_2$  occupation in the material was still dependent on the  $\text{CO}_2$  pressure, so the phase at  $P_{\text{CO}_2} = 10$  kPa can be assigned to be a mixture of ( $\mathbf{1}_{\text{hs}} + \mathbf{1}'_{\text{hs}}$ ) followed by the ST to ( $\mathbf{1}_{\text{ls}} + \mathbf{1}'_{\text{ls}}$ ) phase at 175 K, although the ratio of  $\mathbf{1}_{\text{hs}}/\mathbf{1}'_{\text{hs}}$  (*i.e.*,  $\mathbf{1} \cdot \text{CO}_2$ ) was much lower than that of  $\mathbf{1}'_{\text{hs}}/\mathbf{1}'_{\text{ls}}$  (Figure 5, right). The heating process well displays the nature of  $\text{CO}_2$ -accommodated mixture. Interestingly, at  $P_{\text{CO}_2} < 10$  kPa, the gated adsorption in the framework occurs in a stepwise fashion, with an increase in temperature, leading to two distinctive forms **A**, and **B** (Figure 6c shows an instance at  $P_{\text{CO}_2} = 3.2$  kPa). Below 173 K, a mixed state of  $\mathbf{1}'_{\text{ls}} + \mathbf{1}_{\text{ls}}$  (form **A**) is active, and the SCO occurs from the non- $\text{CO}_2$  adsorbed domain, *i.e.*,  $\mathbf{1}_{\text{ls}} \rightarrow \mathbf{1}_{\text{hs}}$ . The ( $\mathbf{1}'_{\text{ls}} + \mathbf{1}_{\text{hs}}$ ) mixed state **B** prevails in a step-level in the temperature range of 173–220 K. The second form **B** undergoes a  $\text{CO}_2$  release at  $T_{\text{GC}} = 220$  K, accompanied by SCO transition  $\mathbf{1}'_{\text{ls}} \rightarrow \mathbf{1}_{\text{hs}}$ . On the other hand, the transition at  $P_{\text{CO}_2} = 100$  kPa at  $T_{\text{H}} = 245$  K is owing to the intrinsic SCO phenomenon for  $\mathbf{1} \cdot \text{CO}_2$ , *i.e.*,  $\mathbf{1}'_{\text{ls}} \rightarrow \mathbf{1}'_{\text{hs}}$ , because  $T_{\text{GC}} = 253$  K  $>$   $T_{\text{H}}$  (Figure 6d), unlike the desorption-induced SCO observed at  $P_{\text{CO}_2} < 10$  kPa. For  $P_{\text{CO}_2} = 32$  kPa, the steep transition at  $\sim 240$  K just overlapped with the SCO transition of  $\mathbf{1}'_{\text{ls}} \rightarrow \mathbf{1}'_{\text{hs}}$  and  $\text{CO}_2$  release from  $\mathbf{1}'_{\text{ls}} \rightarrow \mathbf{1}_{\text{hs}}$ . The materials at  $P_{\text{CO}_2} < 10$  kPa are mixtures of **1** and  $\mathbf{1} \cdot \text{CO}_2$ , whose ratios were determined as  $\sim 72\%$ ,  $\sim 85\%$  and  $\sim 98\%$   $\mathbf{1} \cdot \text{CO}_2$  states induced at 226 K by  $\text{CO}_2$  accommodation at  $P_{\text{CO}_2} = 1, 3.2,$  and  $10$  kPa, respectively (table S2, Figure S11, ESI). We also carried out *in situ* PXRD measurements to check the structural changes during the adsorption and SCO process (Figure S12, ESI); four states ( $\mathbf{1}_{\text{ls}}$ ,  $\mathbf{1}_{\text{hs}}$ ,  $\mathbf{1}'_{\text{ls}}$ , and  $\mathbf{1}'_{\text{hs}}$ ) are distinguishable in PXRD patterns, providing further evidence of the SCO and gated adsorption process shown in Figure 6.

Based on the above phenomenon of  $\text{CO}_2$ -adsorption actuated spin transition, we were intrigued to check the generality of this method for similar guest molecules like  $\text{CS}_2$ , which was reported to stabilise the LS states for 3D Hofmann-type framework  $\{\text{Fe}(\text{pyrazine})[\text{Pt}(\text{CN})_4]\}$ .<sup>23, 50, 51</sup> Thus,  $\mathbf{1} \cdot \text{CS}_2$  was prepared by liquid-to-liquid slow diffusion technique using a methanolic solution of



CS<sub>2</sub> as the buffer layer (experimental section, ESI). Single crystal X-ray diffraction analysis performed at 100 K showed that **1-CS<sub>2</sub>** crystallises in a monoclinic crystal system in space group I2/c, similar to the parent framework **1-1.3MeOH** (monoclinic C2/c, at 90 K). While the interdigitated nature was retained, two of the CS<sub>2</sub> molecules were found to lie in the middle of the Fe<sub>2</sub>Pd<sub>2</sub> windows of two parallel {Fe[Pd(CN)<sub>4</sub>]}<sub>∞</sub> grids with a short contact distance of 3.871 Å with the nearest Pd centres and an array of C-H...S interactions with the surrounding ligands (Figure S13, ESI). However, the Fe-N equatorial (2.041 and 2.030 Å with Pd(CN)<sub>4</sub> units) and axial (2.117 Å with panning ligands) bond lengths were found more towards the HS state, in stark contrast to **1-1.3MeOH**. However, the instability of the sample at room temperature due to rapid guest loss puts a restriction on carrying out the *dc* magnetic susceptibility measurements of the CS<sub>2</sub> analogue.

This structural anomaly for the CS<sub>2</sub>-encapsulated framework **1-CS<sub>2</sub>** can be attributed to the larger atomic size and low electronegativity of the S in CS<sub>2</sub> exerting a significant chemical pressure to result in the HS state of the Fe atoms, diminishing the cooperative communication between the metal centres. On the other hand, the relatively smaller size and high electronegativity of O in CO<sub>2</sub> facilitates the electrostatic interactions within framework **1**, which is a prerequisite for gated sorption behaviour and predominantly stabilises the LS state with increased absorbate pressure.

## Conclusions

Although the investigation of CO<sub>2</sub> capture by MOFs has been quite explored lately, it is rare that they display CO<sub>2</sub>-induced changes in structure and their properties.<sup>52</sup> The present study provides an efficient and straightforward strategy for the magnetic phase changes *in situ* by tuning the physisorption amount of CO<sub>2</sub> without any change in the chemical properties of framework **1**. Based on the magnetic response and the phase transition diagram obtained under the respective *P*<sub>CO<sub>2</sub></sub>, the key factor of the overall spin-state switching can be interpreted as the stabilisation of LS states under the influence of CO<sub>2</sub>. We are hopeful that the insights gathered from this work into understanding the mechanism by which switchable properties can be controlled by gas adsorption will be helpful for the development of future CO<sub>2</sub>-responsive materials for practical applications.

## Author contributions

All authors have given approval to the final version of the manuscript. AP and SK conceptualised the project; AP, BK and DJM prepared and performed physical characterisation of the frameworks; WK performed the adsorption studies and magnetic measurements under CO<sub>2</sub>; AP and WK interpreted the data and the working concept; AP, SK, and HM prepared the manuscript.

<sup>†</sup>These authors contributed equally.

## Conflicts of interest

There are no conflicts to declare.

## Data availability

Experimental and Crystallographic details, additional structural views, PXRD patterns, FT-IR spectra, TGA data, and additional magnetic measurement information are provided in the Electronic Supplementary Information.

## Acknowledgements

This work is supported by the Science and Engineering Research Board (SERB), India under the project Core Research Grant (Project No. CRG/2022/001676), IISER Bhopal, a Grant-in-Aid for Scientific Research (no. 20H00381, 21H01900, and 21K18925) from MEXT, Japan and the GIMRT and the E-IMR projects at the Institute for Materials Research, Tohoku University. AP, DJM and BK thanks the Council of Scientific and Industrial Research (CSIR), India for providing Senior Research Fellowships. SK acknowledges IISER Bhopal for instrumental support.

## Notes and references

1. A. Paul, A. Gupta and S. Konar, *Cryst. Growth Des.*, 2021, **21**, 5473-5489.
2. A. Paul and S. Konar, *J. Mater. Chem. C*, 2022, **10**, 4980-4984.
3. Y. Cui, B. Li, H. He, W. Zhou, B. Chen and G. Qian, *Acc. Chem. Res.*, 2016, **49**, 483-493.
4. A. Paul, R. Nasani, A. Mondal, S. Roy, S. Vela and S. Konar, *Cryst. Growth Des.*, 2020, **20**, 6296-6301.
5. O. Sato, *Nat. Chem.*, 2016, **8**, 644-656.
6. H. Furukawa, K. E. Cordova, M. O'Keeffe and O. M. Yaghi, *Science*, 2013, **341**, 1230444.



7. A. Kirchon, L. Feng, H. F. Drake, E. A. Joseph and H.-C. Zhou, *Chem. Soc. Rev.*, 2018, **47**, 8611-8638.
8. O. I.-F. Chen, C.-H. Liu, K. Wang, E. Borrego-Marin, H. Li, A. H. Alawadhi, J. A. R. Navarro and O. M. Yaghi, *Chem. Soc. Rev.*, 2024, **146**, 2835-2844.
9. E. Coronado and G. Mínguez Espallargas, *Chem. Soc. Rev.*, 2013, **42**, 1525-1539.
10. G. Mínguez Espallargas and E. Coronado, *Chem. Soc. Rev.*, 2018, **47**, 533-557.
11. S. Li, W. Han, Q.-F. An, K.-T. Yong and M.-J. Yin, *Adv. Funct. Mater.*, 2023, **n/a**, 2303447.
12. S.-M. Wang, M. Shivanna, S.-T. Zheng, T. Pham, K. A. Forrest, Q.-Y. Yang, Q. Guan, B. Space, S. Kitagawa and M. J. Zaworotko, *J. Am. Chem. Soc.*, 2024, **146**, 4153-4161.
13. M. Shivanna, K.-i. Otake, S. Hiraide, T. Fujikawa, P. Wang, Y. Gu, H. Ashitani, S. Kawaguchi, Y. Kubota, M. T. Miyahara and S. Kitagawa, *Angew. Chem. Int. Ed.*, 2023, **62**, e202308438.
14. A. Schneemann, V. Bon, I. Schwedler, I. Senkovska, S. Kaskel and R. A. Fischer, *Chem. Soc. Rev.*, 2014, **43**, 6062-6096.
15. Z. Hu, B. J. Deibert and J. Li, *Chem. Soc. Rev.*, 2014, **43**, 5815-5840.
16. J. Zhang, W. Kosaka, K. Sugimoto and H. Miyasaka, *J. Am. Chem. Soc.*, 2018, **140**, 5644-5652.
17. J. Zhang, W. Kosaka, Y. Kitagawa and H. Miyasaka, *Angew. Chem. Int. Ed.*, 2019, **58**, 7351-7356.
18. Q. Wang and D. Astruc, *Chem. Rev.*, 2020, **120**, 1438-1511.
19. S. Parshamoni, R. Nasani, A. Paul and S. Konar, *Inorg. Chem. Front.*, 2021, **8**, 693-699.
20. S. Khatua, S. Goswami, S. Biswas, K. Tomar, H. S. Jena and S. Konar, *Chem. Mater.*, 2015, **27**, 5349-5360.
21. A. Paul, S. D. Adhikary, S. Kapurwan and S. Konar, *J. Mater. Chem. A*, 2022, **10**, 13152-13169.
22. G. J. Halder, C. J. Kepert, B. Moubaraki, K. S. Murray and J. D. Cashion, *Science*, 2002, **298**, 1762-1765.
23. M. Ohba, K. Yoneda, G. Agustí, M. C. Muñoz, A. B. Gaspar, J. A. Real, M. Yamasaki, H. Ando, Y. Nakao, S. Sakaki and S. Kitagawa, *Angew. Chem. Int. Ed.*, 2009, **48**, 4767-4771.
24. B. Kumar, A. Paul, D. J. Mondal, P. Paliwal and S. Konar, *Chem. Rec.*, 2022, **22**, e202200135.
25. M. Feng, Z.-Y. Ruan, Y.-C. Chen and M.-L. Tong, *Chem. Commun.*, 2020, **56**, 13702-13718.
26. S.-G. Wu, L.-F. Wang, Z.-Y. Ruan, S.-N. Du, S. Gómez-Coca, Z.-P. Ni, E. Ruiz, X.-M. Chen and M.-L. Tong, *J. Amer. Chem. Soc.*, 2022, **144**, 14888-14896.
27. P. D. Southon, L. Liu, E. A. Fellows, D. J. Price, G. J. Halder, K. W. Chapman, B. Moubaraki, K. S. Murray, J.-F. Létard and C. J. Kepert, *J. Am. Chem. Soc.*, 2009, **131**, 10998-11009.
28. J. W. Shin, A. R. Jeong, S. Jeoung, H. R. Moon, Y. Komatsumar, S. Hayami, D. Moon and K. S. Min, *Chem. Commun*, 2018, **54**, 4262-4265.
29. E. Coronado, M. Gimenez-Marques, G. Mínguez Espallargas, F. Rey and I. J. Vitorica-Yrezabal, *J. Am. Chem. Soc.*, 2013, **135**, 15986-15989.
30. C. Serre, F. Millange, C. Thouvenot, M. Noguès, G. Marsolier, D. Louër and G. Férey, *J. Amer. Chem. Soc.*, 2002, **124**, 13519-13526.
31. C. Mellot-Draznieks, C. Serre, S. Surblé, N. Audebrand and G. Férey, *J. Amer. Chem. Soc.*, 2005, **127**, 16273-16278.
32. S. Horike, S. Shimomura and S. Kitagawa, *Nat. Chem.*, 2009, **1**, 695-704.
33. K. Lin, Q. Li, R. Yu, J. Chen, J. P. Attfield and X. Xing, *Chem. Soc. Rev.*, 2022, **51**, 5351-5364.
34. D. J. Mondal, B. Kumar, A. Paul and S. Konar, *J. Mater. Chem. C*, 2023, **11**, 6750-6759.
35. R. Turo-Cortés, C. Bartual-Murgui, J. Castells-Gil, M. C. Muñoz, C. Martí-Gastaldo and J. A. Real, *Chem. Sci.*, 2020, **11**, 11224-11234.
36. W. Kosaka, H. Nemoto, K. Nagano, S. Kawaguchi, K. Sugimoto and H. Miyasaka, *Chem. Sci.*, 2023, **14**, 791-800.
37. W. Kosaka, Y. Hiwatashi, N. Amamizu, Y. Kitagawa, J. Zhang and H. Miyasaka, *Angew. Chem. Int. Ed.*, 2023, **62**, e202312205.
38. E. Coronado, M. Giménez-Marqués, G. M. Espallargas and L. Brammer, *Nat. Commun.*, 2012, **3**, 828.
39. E. D. Bloch, W. L. Queen, R. Krishna, J. M. Zadrozny, C. M. Brown and J. R. Long, *Science*, 2012, **335**, 1606-1610.
40. W. Kosaka, Z. Liu, J. Zhang, Y. Sato, A. Hori, R. Matsuda, S. Kitagawa and H. Miyasaka, *Nat. Commun.*, 2018, **9**, 5420.
41. J. Zhang, W. Kosaka, Y. Kitagawa and H. Miyasaka, *Nat. Chem.*, 2021, **13**, 191-199.
42. J. Zhang, W. Kosaka, H. Sato and H. Miyasaka, *J. Am. Chem. Soc.*, 2021, **143**, 7021-7031.
43. J. Zhang, W. Kosaka, Q. Liu, N. Amamizu, Y. Kitagawa and H. Miyasaka, *J. Am. Chem. Soc.*, 2023, **145**, 26179-26189.
44. M. Nakaya, W. Kosaka, H. Miyasaka, Y. Komatsumar, S. Kawaguchi, K. Sugimoto, Y. Zhang, M. Nakamura, L. F. Lindoy and S. Hayami, *Angew. Chem. Int. Ed.*, 2020, **59**, 10658-10665.
45. M. Magott, K. Płonka, B. Sieklucka, K. Dziedzic-Kocurek, W. Kosaka, H. Miyasaka and D. Pinkowicz, *Chem. Sci.*, 2023, **14**, 9651-9663.
46. C. R. Murdock, B. C. Hughes, Z. Lu and D. M. Jenkins, *Coord. Chem. Rev.*, 2014, **258**, 119-136.
47. S. Brooker, *Chem. Soc. Rev.*, 2015, **44**, 2880-2892.
48. D. J. Mondal, A. Mondal, A. Paul and S. Konar, *Inorg. Chem.*, 2022, **61**, 4572-4580.
49. K. Uemura, S. Kitagawa, K. Fukui and K. Saito, *J. Am. Chem. Soc.*, 2004, **126**, 3817-3828.
50. K. Scanda, Y. Avila, R. Mojica, R. Amaro, B. Portales-Martínez, M. González, M. Avila, B. D. Moreno and E. Reguera, *Colloids Surf., A*, 2023, **676**, 132114.
51. H. Ando, Y. Nakao, H. Sato, M. Ohba, S. Kitagawa and S. Sakaki, *Chem. Phys. Lett.*, 2011, **511**, 399-404.
52. N. Yanai, K. Kitayama, Y. Hijikata, H. Sato, R. Matsuda, Y. Kubota, M. Takata, M. Mizuno, T. Uemura and S. Kitagawa, *Nat. Mater.*, 2011, **10**, 787-793.

View Article Online  
DOI: 10.1039/C4CC00000A



View Article Online  
DOI: 10.1039/D4SC04266B

## Data availability

Experimental and Crystallographic details, additional structural views, PXRD patterns, FT-IR spectra, TGA data, and additional magnetic measurement information are provided in the Electronic Supplementary Information.

