

Cite this: *Nanoscale Adv.*, 2021, 3, 2117

# A wafer-scale synthesis of monolayer MoS<sub>2</sub> and their field-effect transistors toward practical applications

Yuchun Liu and Fuxing Gu \*

Molybdenum disulfide (MoS<sub>2</sub>) has attracted considerable research interest as a promising candidate for downsizing integrated electronics due to the special two-dimensional structure and unique physicochemical properties. However, it is still challenging to achieve large-area MoS<sub>2</sub> monolayers with desired material quality and electrical properties to fulfill the requirement for practical applications. Recently, a variety of investigations have focused on wafer-scale monolayer MoS<sub>2</sub> synthesis with high-quality. The 2D MoS<sub>2</sub> field-effect transistor (MoS<sub>2</sub>-FET) array with different configurations utilizes the high-quality MoS<sub>2</sub> film as channels and exhibits favorable performance. In this review, we illustrated the latest research advances in wafer-scale monolayer MoS<sub>2</sub> synthesis by different methods, including Au-assisted exfoliation, CVD, thin film sulfurization, MOCVD, ALD, VLS method, and the thermolysis of thiosalts. Then, an overview of MoS<sub>2</sub>-FET developments was provided based on large-area MoS<sub>2</sub> film with different device configurations and performances. The different applications of MoS<sub>2</sub>-FET in logic circuits, basic memory devices, and integrated photodetectors were also summarized. Lastly, we considered the perspective and challenges based on wafer-scale monolayer MoS<sub>2</sub> synthesis and MoS<sub>2</sub>-FET for developing practical applications in next-generation integrated electronics and flexible optoelectronics.

Received 14th December 2020  
Accepted 17th February 2021

DOI: 10.1039/d0na01043j

rsc.li/nanoscale-advances

## 1. Introduction

In recent years, 2D transition metal dichalcogenides (TMD), especially molybdenum disulfide (MoS<sub>2</sub>), have attracted widespread attention for a variety of next-generation electronic and

optoelectronic device applications.<sup>1–3</sup> Compared with conventional silicon-based semiconductors, monolayer MoS<sub>2</sub> is envisioned as an alternate building block for the next-generation electronic device and integrated circuit with short channel, thin thickness, small volume, light weight, fast speed, and high sensitivity.<sup>4–12</sup> However, it is still very challenging to achieve large-area, high-quality MoS<sub>2</sub> for practical applications. Since the traditional mechanical exfoliation method is difficult to

Laboratory of Integrated Opto-Mechanics and Electronics, School of Optical-Electrical and Computer Engineering, University of Shanghai for Science and Technology, Shanghai 200093, China. E-mail: gufuxing@usst.edu.cn



Yuchun Liu received her PhD from Huazhong University of Science and Technology in 2017. She is now a postdoctoral researcher at the University of Shanghai for Science and Technology with Prof. Songlin Zhuang and Prof. Fuxing Gu. Her research interests focus on the synthesis and understanding the mechanism of two-dimensional materials and their applications in optics and

optoelectronics, including transition metal dichalcogenides and inorganic perovskites.



Fuxing Gu received his BS degree in 2006 and PhD degree in 2012 from Zhejiang University. He is currently an associate professor at the Laboratory of Integrated Opto-Mechanics and Electronics (<https://iome.usst.edu.cn>), University of Shanghai for Science and Technology, China. His research interests include micro/nanofiber optics and optomechanics, microcavity, and 2D-material optics. He has published over 40 papers in journals such as *Science*, *Nat. Commun.*, *Sci. Adv.*, *Light: Sci. & Appl.*, *J. Am. Chem. Soc.*, and *Nano Lett.*



meet the needs of wafer-scale MoS<sub>2</sub> synthesis in terms of the yield, size, thickness, and uniformity, most MoS<sub>2</sub> investigations synthesis have focused on developing the vapor phase growth of monolayer MoS<sub>2</sub>.<sup>13–15</sup> Generally, synthetic methods for large-area monolayers and few-layer MoS<sub>2</sub> films include traditional chemical vapor deposition (CVD), thin film sulfurization, metal–organic chemical vapor deposition (MOCVD), atomic layer deposition (ALD), and vapor–liquid–solid (VLS) method.<sup>16–28</sup> Due to the development of synthetic methods, the large-area, high-quality continuous monolayer MoS<sub>2</sub> films have been successfully reported, with a wafer-scale even up to 8 inch,<sup>18</sup> suggesting great potential in integrated devices compatible with silicon-based micro-fabrication processes.

In the past decade, 2D MoS<sub>2</sub> with atomic thickness is considered one of the most promising candidates for the downscaling trend in integrated electronics, which leads to continuing demands for minimizing the channel thickness. The wafer-scale 2D MoS<sub>2</sub> films can be reliably transferred and heterogeneously integrated onto a variety of substrates with the aid of polymethyl methacrylate (PMMA) or polydimethylsiloxane (PDMS), demonstrating many important applications in environment-friendly transient devices.<sup>11–13,31</sup> Since the fabrication process of wafer-scale MoS<sub>2</sub>-based devices can be more compatible with the traditional complementary metal oxide semiconductor (CMOS) fabrication process, many investigations have focused on developing wafer-scale monolayer MoS<sub>2</sub> and high-performance MoS<sub>2</sub> field-effect transistors (MoS<sub>2</sub>-FET) to significantly promote their future device applications, especially electronic and optoelectronic applications.<sup>11–13</sup> The fabricated MoS<sub>2</sub>-FET have achieved attractive performance with high on/off ratios up to 10<sup>10</sup> and a high mobility of about 167 ± 20 cm<sup>2</sup> V<sup>-1</sup> s<sup>-1</sup>.<sup>13,14</sup> Even though the reported field effect mobility of MoS<sub>2</sub>-FET is still behind that of Si-based transistors, explorations are promising to advance one step further from a single MoS<sub>2</sub>-FET to complex devices, such as basic logic gate circuits, basic memory devices, and integrated phototransistors. With the development of MoS<sub>2</sub> synthesis and FET techniques, 2D MoS<sub>2</sub> would play a great role in next-generation integrated circuits and flexible electronics.

In this review, we focus on wafer-scale synthesis of monolayer MoS<sub>2</sub> film and the high-performance MoS<sub>2</sub>-FET toward practical applications. We first introduce the recent progresses in MoS<sub>2</sub> synthesis by different methods, including Au-assisted exfoliation, CVD, thin film sulfurization, MOCVD, ALD, VLS method, and the thermolysis of thiosalts. Then, an overview of the MoS<sub>2</sub>-FET developments will be provided based on different device configurations. The basic characterization and device performance of different MoS<sub>2</sub>-FET will also be summarized. Furthermore, we will present recent advances in applications of logic circuits, memory devices, and photodetectors based on 2D wafer-scale monolayer MoS<sub>2</sub> and MoS<sub>2</sub>-FET. Lastly, we will discuss the perspective and challenges based on wafer-scale MoS<sub>2</sub> synthesis and MoS<sub>2</sub>-FET for developing practical applications in integrated electronics and flexible optoelectronics. The recent advances in monolayer MoS<sub>2</sub> synthesis and MoS<sub>2</sub>-FETs emphasize the opportunity and potential of the wafer-scale MoS<sub>2</sub> in terms of achieving the practical application in

modern large-scale integrated devices based on the existing silicon-based micro-fabrication processes.

## 2. Wafer-scale MoS<sub>2</sub> synthesis

2D MoS<sub>2</sub> film can be synthesized by the top-down strategy and the bottom-up strategy. In the top-down strategy, the commercialized MoS<sub>2</sub> bulk crystal is physically peeled into the monolayer or few-layer MoS<sub>2</sub> flakes by mechanical exfoliation methods. In the bottom-up strategy, the MoS<sub>2</sub> film is prepared through chemical reaction on a specific substrate by CVD, MOCVD, ALD, *etc.* In order to realize wafer-scale monolayer MoS<sub>2</sub> synthesis, continuous efforts have been made to develop the synthetic method and synthetic system based on the top-down strategy and the bottom-up strategy.

### 2.1 Au-assisted exfoliation method

Due to the unique layered geometry and van der Waals (vdW) interactions in 2D materials, mechanical exfoliation provides a low-cost way to produce the monolayer and few-layer highly crystalline layered 2D materials. In a typical mechanical exfoliation process, appropriate thin MoS<sub>2</sub> crystals were first peeled off from the bulk crystal using adhesive scotch tape and then transferred onto a target substrate. After the scotch tape is removed, monolayer or few-layer MoS<sub>2</sub> can be obtained on the substrate. Generally, the sizes and thicknesses of 2D MoS<sub>2</sub> from scotch-tape exfoliation are limited, which is not suitable for mass-production and scaled-up applications. Gold is known to have a strong affinity for sulfur and can be exploited to exfoliate monolayer from the bulk crystal as a result of strong vdW interactions between Au and the topmost MoS<sub>2</sub> layer.<sup>26–28</sup>

Recently, Liu *et al.*<sup>29</sup> developed a facile method by developing ultraflat gold layers on polymer supports to disassemble vdW single crystals layer by layer into monolayers with near-unity yield, which can be applied to a broad range of vdW single crystals on various substrates. The ultraflat gold film on a polymer substrate was first evaporated on an ultraflat surface with an Å scale roughness and was then stripped off the substrate with a thermal release tape and an interfacial layer. Due to the intimate and uniform vdW contact between the ultraflat gold and 2D vdW crystal surface, a complete monolayer was exfoliated from the crystal and transferred onto the desired substrate. After removing the thermal release tape and the interfacial layer, the gold was etched in a mild etchant solution (I<sub>2</sub>/I<sup>-</sup>), resulting in a large-area monolayer film. In the Au-assisted method, MoS<sub>2</sub> monolayer in the centimeter scale was exfoliated from the bulk crystal and the dimensions are only limited by bulk crystal sizes. Similarly, Huang *et al.*<sup>30</sup> reported a universal Au-assisted exfoliation of large-area 2D crystals, as shown in Fig. 1. Firstly, a thin layer of Au was deposited onto a substrate covered with a thin Ti or Cr adhesion layer. Then, a freshly cleaved layered bulk crystal on tape was brought in contact with the Au layer with a gentle pressure applied to establish a good layered crystal/Au contact. One or few large-area monolayer flakes were left on the Au surface after peeling off the tape and removing the major portion of the crystal.



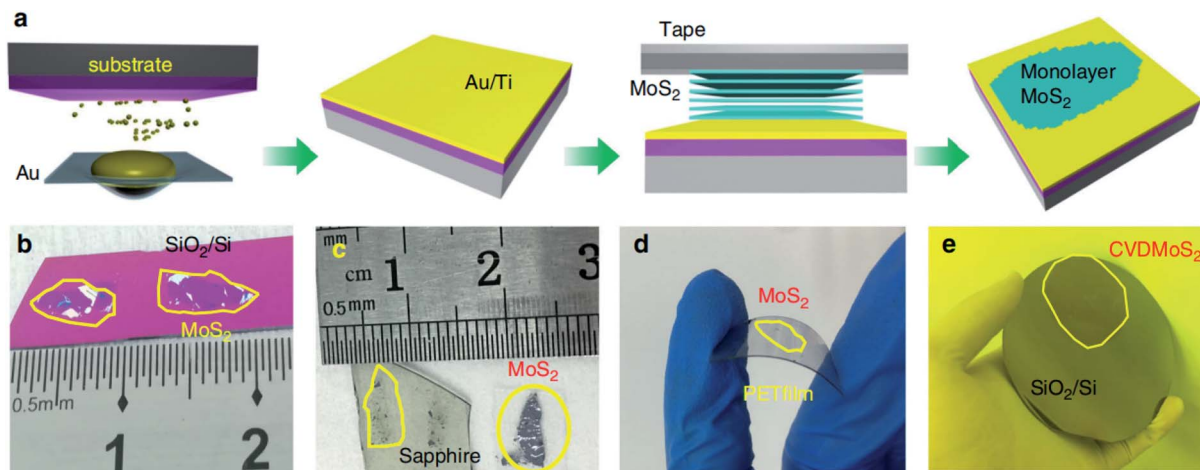


Fig. 1 Mechanical exfoliation of different monolayer materials with macroscopic size. (a) Schematic of the exfoliation process. (b–d) Optical images of exfoliated MoS<sub>2</sub> on SiO<sub>2</sub>/Si, sapphire, and plastic film. (e) 2-inch CVD-grown monolayer MoS<sub>2</sub> film transferred onto a 4-inch SiO<sub>2</sub>/Si substrate.<sup>30</sup> Reproduced with permission from ref. 30, copyright 2020 Springer Nature.

Limited only by the size of the available bulk crystals, these monolayer flakes are usually macroscopic with a size in millimeters. This method can also be applied to CVD-grown wafer-scale MoS<sub>2</sub> and the exfoliated monolayer flakes can be intactly transferred onto arbitrary substrates after removing the gold layer by the KI/I<sub>2</sub> etchant.

## 2.2 CVD method

In the traditional CVD synthesis of 2D MoS<sub>2</sub>, the solid-state precursors of MoO<sub>3</sub> powder and sulfur (S) powder were first evaporated into gaseous states and then reacted with each other in a low-pressure chamber, and MoS<sub>2</sub> nuclei formed and gradually enlarged into grains with the aid of carrier-gas flow on the downstream substrates. To achieve large-area continuous monolayer MoS<sub>2</sub> films, many efforts have been devoted for improving the CVD synthesis of 2D MoS<sub>2</sub>, as shown in Fig. 2.<sup>31–41</sup>

One strategy is to overcome the CVD setup limitations. Yu *et al.*<sup>31</sup> reported a three-temperature-zone CVD system that employs independent carrier gas pathways for sulfur and MoO<sub>3</sub> sources to successfully fabricate 2-inch wafer-scale uniform monolayer MoS<sub>2</sub> films on sapphire. During the growth, the temperatures for the sulfur source, MoO<sub>3</sub> source, and wafer substrate are 115, 930, and 530 °C, respectively, with a typical growth duration of 40 min. Xu *et al.*<sup>32</sup> reported an improved wafer-scale growth of continuous MoS<sub>2</sub> film based on atmospheric pressure within a two-temperature-zone CVD setup. As low pressure of 300 Pa can effectively promote the evaporation rate and provide a uniform concentration of the gaseous precursor in the tube to increase the lateral growth rate; thus, a uniform and continuous monolayer MoS<sub>2</sub> film can be achieved by increasing the sulfurization time to 15 min. Recently, Wang *et al.*<sup>33</sup> realized the epitaxy of highly oriented and large-domain monolayer MoS<sub>2</sub> films at a 4-inch wafer scale *via* a facile multisource CVD growth method. In this setup, MoO<sub>3</sub> sources are evenly loaded within the six minitubes and the S source is loaded within the center minitubes. The carrier gases

for S and MoO<sub>3</sub> sources are independently delivered through the minitubes. This multisource design provides homogeneous cross-sectional source supply, leading to uniform growth with only 0° and 60° oriented domains and domain size >180 μm. He *et al.*<sup>34</sup> demonstrated a layer-by-layer scalable growth of MoS<sub>2</sub> films on a moving sapphire substrate by local-feeding atmospheric-pressure CVD. By the linear moving of the substrate across the cone-shaped diffusion concentration gradient of Mo-containing species and controlling the moving cycles, large-scale growth, uniform monolayer, and few-layer MoS<sub>2</sub> with sizes up to ~4.7 cm × 6 mm can be obtained. The 4-, 7-, and 9-cycle growth corresponding to dwelling times of 8, 14, and 18 min can form complete monolayer, bilayer, and trilayer MoS<sub>2</sub> films, respectively. Durairaj *et al.*<sup>35</sup> utilized SiO<sub>2</sub> as a mechanical barrier to moderate the Mo flux so as to allow better controllability and high position selectivity for the CVD growth of homogeneous MoS<sub>2</sub> monolayers. The barrier offered great control in controlling the Mo precursor vapor concentration at the substrate position, mitigating the secondary and intermediate phases as well as second layer nucleation, thus leading to a continuous monolayer with high surface homogeneity.

Another strategy for improving the CVD synthesis is to adjust the precursor or the substrate. Aside from elemental sulfur powder, hydrogen sulfide (H<sub>2</sub>S) gas has also proven to be a good sulfur source, which exhibits high vulcanization ability. Liu *et al.*<sup>36</sup> demonstrated that a reproducible and low-cost method for growing wafer-scale (approximately 9.5 × 4.5 cm<sup>2</sup>) high-quality monolayer MoS<sub>2</sub> by using H<sub>2</sub>S gas as the sulfur source and to stabilize the sulfur vapor pressure during the growth process. In addition, two independent carrier gas pathways for H<sub>2</sub>S and MoO<sub>3</sub> sources were employed to prevent MoO<sub>3</sub> poisoning and achieve an improved and stable growth condition. Yang *et al.*<sup>37</sup> reported the epitaxial growth of wafer-scale single-crystal MoS<sub>2</sub> monolayers on vicinal Au(111) thin film by a facile ambient-pressure CVD with MoO<sub>3</sub> and S as the



precursors. Single-crystal Au(111) substrate was obtained by melting and resolidifying the commercial Au foils at a designated temperature ( $\sim 1050$  °C) for 10 min on cleansed W foils. During the growth, the unidirectional oriented MoS<sub>2</sub> domains on the Au(111) film with an area of  $\sim 3 \times 3$  cm<sup>2</sup> started to merge

and eventually coalesced into a continuous film after 8 min at  $\sim 720$  °C.

Besides these planer substrates, 2D MoS<sub>2</sub> can also be synthesized on non-planar substrates. Liao *et al.*<sup>42</sup> firstly proposed single-crystal monolayer MoS<sub>2</sub> growth on tapered silica micro/nanofibers

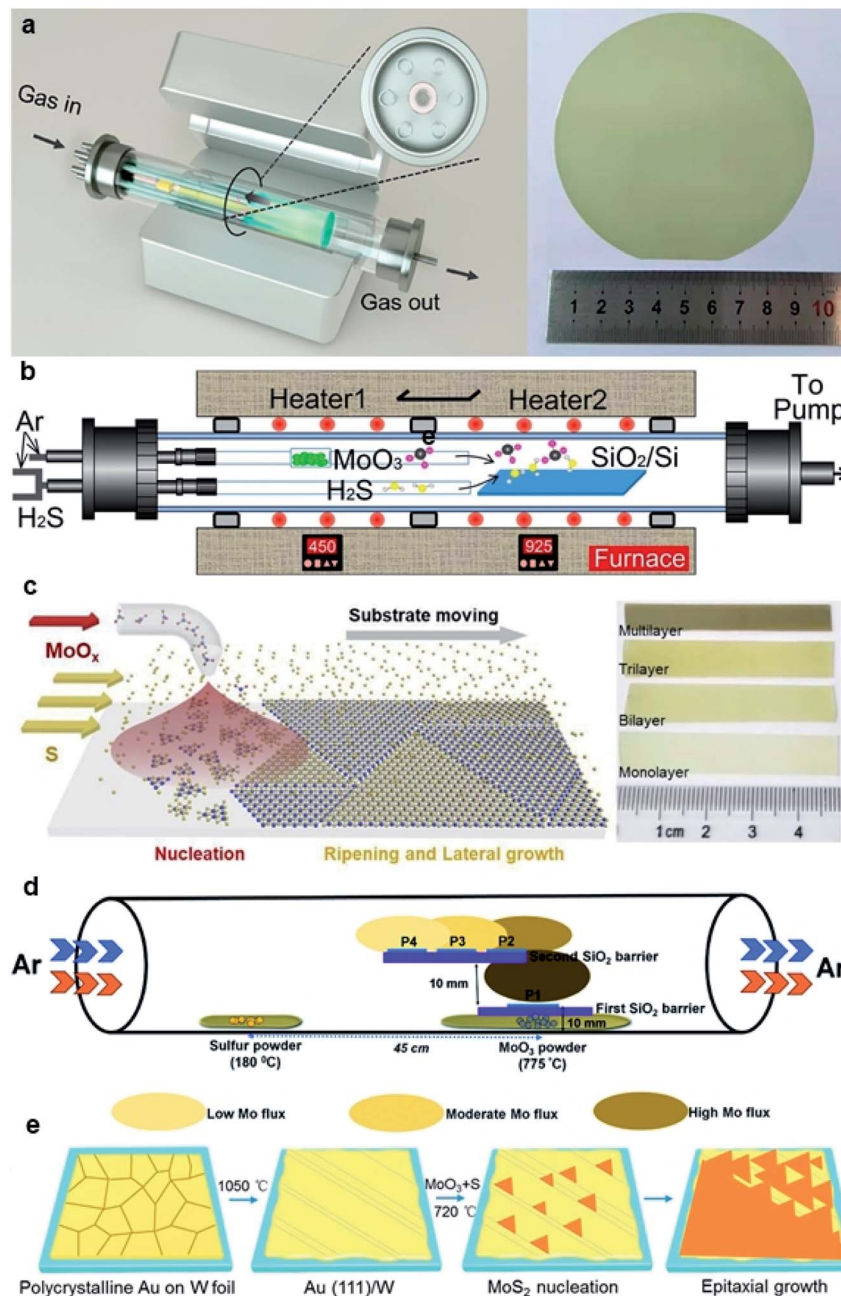


Fig. 2 (a) Schematic diagram of the multisource CVD setup and the photograph of a 4-inch sapphire wafer uniformly covered by the monolayer MoS<sub>2</sub> film;<sup>33</sup> reproduced with permission from ref. 33, copyright 2020 American Chemical Society. (b) Schematic illustration of a homemade two-temperature zone CVD setup and the as-synthesized monolayer MoS<sub>2</sub> film;<sup>36</sup> reproduced with permission from ref. 36, copyright 2020 IOP Publishing, Ltd. (c) Schematic diagram of substrate-moving atmospheric pressure CVD and the photograph of large-scale MoS<sub>2</sub> films;<sup>34</sup> reproduced with permission from ref. 34, copyright 2019 IOP Publishing, Ltd. (d) Schematic of the experimental setup showing the side-view geometry of the stair-case-like barrier with different substrate positions and the images for the MoS<sub>2</sub> sample were acquired from P2;<sup>35</sup> reproduced with permission from ref. 35, copyright 2020 The Royal Society of Chemistry. (e) Schematic illustration of Au(111) formation and the MoS<sub>2</sub> growth process, and the photograph of a CVD-grown MoS<sub>2</sub> monolayer on the Au(111)/W foil substrate (area  $\sim 3 \times 3$  cm<sup>2</sup>).<sup>37</sup> Reproduced with permission from ref. 37, copyright 2020 American Chemical Society.



(MNFs) and realized photoluminescence (PL) enhancement by high-density oxygen dangling bonds released from the tapered MNFs surface, as shown in Fig. 3. The monolayer MoS<sub>2</sub> grown on silica MNF exhibits a PL quantum yield from ~30% to 1% in a wide pump intensity range from 10<sup>-1</sup> to 10<sup>4</sup> W cm<sup>-2</sup> at room-temperature. Due to the taper-drawing process and high-intensity light irradiation, the Si-O bonds of silica can be broken directly and high-density oxygen dangling bonds can be released on the MNFs surface. These reactive oxygen dangling atoms then fill the sulfur vacancies or bridge with neighboring sulfur atoms in monolayer MoS<sub>2</sub>, forming stable localized sites through electron transfer in MoS<sub>2</sub>. Thus, the taper-drawing process and high-intensity light irradiation process will reduce the non-radiative carrier-recombination centers and strongly enhance the PL of the monolayer MoS<sub>2</sub> in a wide pump dynamic range at room temperature. These unique advantages based on the taper-drawing process enable the direct realization of low-threshold lasing without high-quality factor optical microcavities, which demonstrated great potential in different optical and optoelectronic applications.<sup>42-44</sup>

### 2.3 Thin film sulfurization method

Large-area 2D MoS<sub>2</sub> with excellent uniformity can be obtained by sulfurizing the deposited Mo or MoO<sub>x</sub> in a chamber with a sulfur-rich environment. This thin film sulfurization method refers to a two-step process, namely, thin film deposition and the followed sulfurization, which is also classified into two-step CVD methods. As shown in Fig. 4, the Mo precursors can be

deposited by various deposition techniques, including electron-beam evaporation, pulsed laser deposition, magnetron sputtering, spin-coating, and ALD. The sulfur source includes S vapor, H<sub>2</sub>S, and carbon disulfide (CS<sub>2</sub>).

Kim *et al.*<sup>45</sup> demonstrated wafer-scale 2D MoS<sub>2</sub> growth *via* the sulfurization of transition metals deposited on the SiO<sub>2</sub>/Si substrates using a home-built chamber. High-quality molybdenum (Mo) was deposited on cleaned SiO<sub>2</sub>/Si wafers with a typical dimension of 1 × 3 cm<sup>2</sup> using an e-beam evaporation system and then placed at the center zone of the CVD furnace for sulfurization by sulfur vapor at 800 °C. Jo *et al.*<sup>46</sup> developed the two-step synthesis of large-area MoS<sub>2</sub> thin film by depositing Mo metal films by electron-beam and sulfurizing the Mo film in mixtures of H<sub>2</sub>S and O<sub>2</sub> gas. It was found that the presence of trace levels of O<sub>2</sub> accelerates the crystallization of MoS<sub>2</sub> and affects the layer orientation, without changing the kinetics of mass transport or the final film composition. Large-area MoS<sub>2</sub> films grown on 2-inch wafer, Al, glass, and indium tin oxide (ITO) at 400 °C were realized by this two-step method. Recently, Park *et al.*<sup>47</sup> fabricated MoS<sub>2</sub> device arrays constructed on large-dimensional MoS<sub>2</sub> films grown using a radio-frequency (RF) magnetron sputtering deposition method combined with post-treatment processes. High-quality centimeter-scale trilayer MoS<sub>2</sub> was achieved by sputtering, EBI, and sulfurization. The post-treatments that rearrange the atoms in the MoS<sub>2</sub> films can result in an improvement of the MoS<sub>2</sub> crystallinity. Almeida *et al.*<sup>48</sup> presented wafer-scale MoS<sub>2</sub> growth at arbitrary integer layer number by a technique based on the decomposition of CS<sub>2</sub>

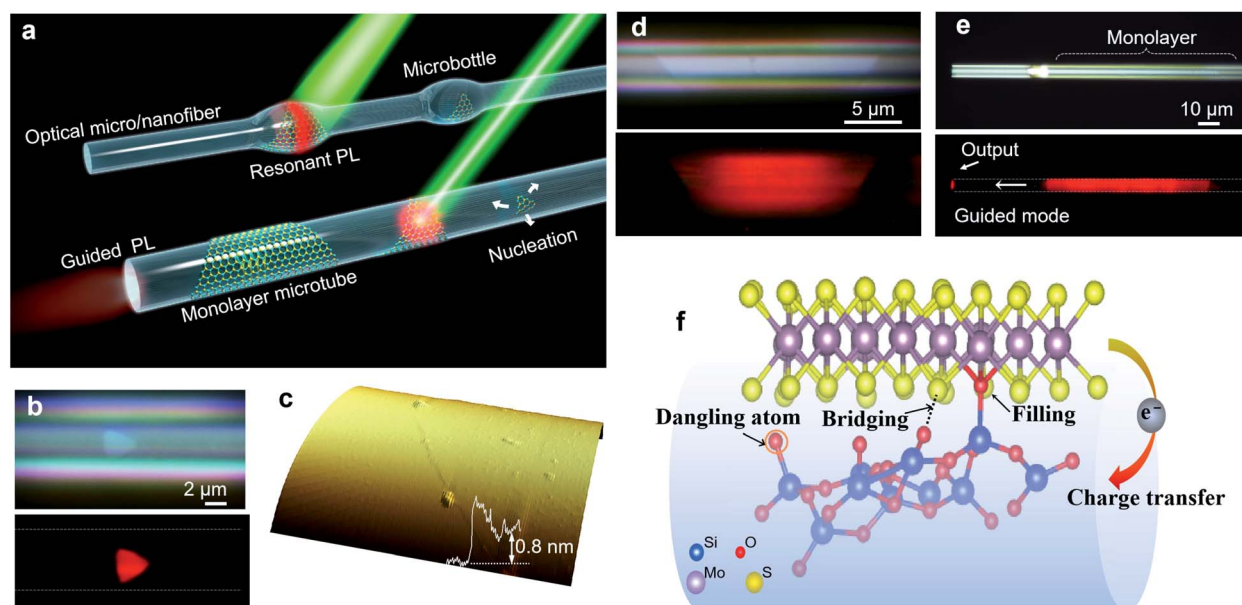


Fig. 3 Monolayer MoS<sub>2</sub> grown on MNFs. (a) Conceptual illustration of monolayer MoS<sub>2</sub> grown on MNFs with uniform diameters and with microbottle structures. A single-crystal triangular domain first nucleates on the MNF surface and then laterally grows into a large-area monolayer structure. A 532 nm CW laser is used to excite the PL emissions. (b) Optical and PL images of a triangular layered MoS<sub>2</sub> on a microfiber ( $D_{\text{fiber}} = 6.1 \mu\text{m}$ ) with (c) a thickness of  $\sim 0.8 \text{ nm}$ , as confirmed by an AFM scan. (d) Optical and PL images showing the clean surface and two sharp boundary edges of the MoS<sub>2</sub> monolayer/microfiber structure ( $D_{\text{fiber}} = 5.5 \mu\text{m}$ ). (e) Optical and PL images showing a large-area monolayer/microfiber ( $D_{\text{fiber}} = 5.4 \mu\text{m}$ ). Some guided emission is emitted at the distal end of the microfiber. (f) The generated oxygen dangling atoms can fill the sulfur vacancies, bridge with neighboring sulfur atoms, and form localized sites by transferring electrons from MoS<sub>2</sub>, leading to enhanced PL emission.<sup>42</sup> Reproduced with permission from ref. 42.



on a hot Mo filament. As  $\text{CS}_2$  molecules decompose at the Mo filaments,  $\text{MoS}_x$  precursors evolve, evaporate from the rods, and deposit onto the substrate at  $650^\circ\text{C}$ , where they obtain stoichiometric sulfur contents from the environmental  $\text{CS}_2$  and form into extended islands or evaporate again. Since the hue value of light from the hot Mo filaments reflected from the wafer

substrate changes as the film grows layer by layer, the concomitant measurement of this hue was employed to control the growth process, which allows the precise targeting of any integer layer number.

Besides Mo films, oxidized Mo film is also a precursor source in the sulfurization method. Choi *et al.*<sup>49</sup> synthesized the 2-inch-scale

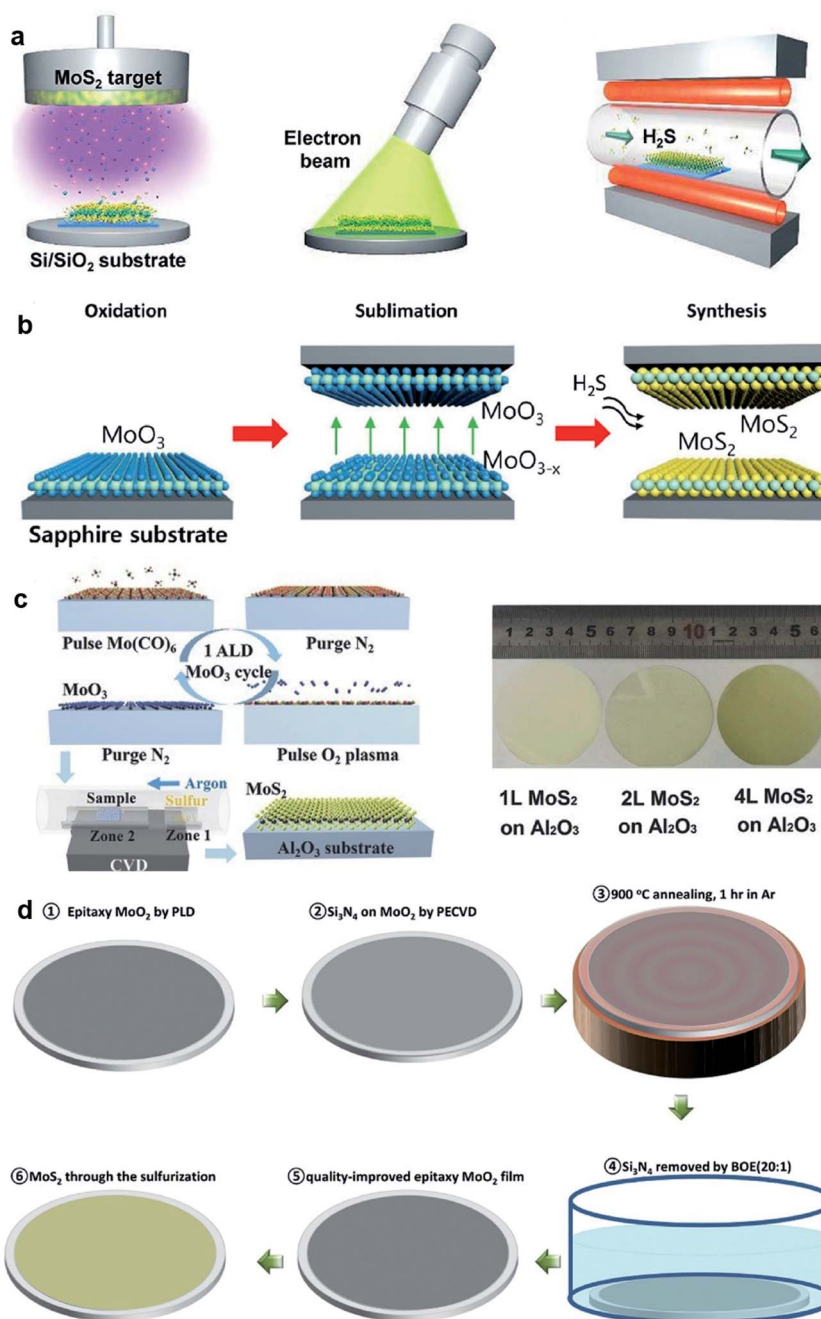


Fig. 4 (a) Schematic illustration of the synthetic process of the  $\text{MoS}_2$  film: sputtering, EBI treatment, and sulfurization;<sup>47</sup> reproduced with permission from ref. 47, copyright 2020 American Chemical Society. (b) Schematic illustrations of the reaction sequence of monolayer  $\text{MoS}_2$  via proximity evaporation of the Mo film precursor with the three steps (oxidation, sublimation, and synthesis);<sup>49</sup> reproduced with permission from ref. 49, copyright 2020 American Chemical Society. (c) Schematic of one cycle ALD process for the  $\text{MoO}_3$  film and the sulfurization process for  $\text{MoS}_2$ , and the photo of the  $\text{MoS}_2$  film on a 2-inch sapphire wafer;<sup>52</sup> reproduced with permission from ref. 52, copyright 2017 John Wiley and Sons. (d) Flow diagram showing the synthesis of single-crystal  $\text{MoS}_2$  films converted from CLAP-treated precursor  $\text{MoO}_2$  films.<sup>51</sup> Reproduced with permission from ref. 51, copyright 2020 John Wiley and Sons.



monolayer MoS<sub>2</sub> film using an atmospheric pressure reaction process as the result of the reaction between the oxidized Mo and gaseous H<sub>2</sub>S at a peak temperature of 780 °C. The growth is based on a unique reaction mechanism due to the self-limiting precursor source in a proximity reaction environment with a distance of only ~0.5 mm from the reaction zone, which provides a unique advantage of uniformity with the self-limiting reaction due to the limited MoO<sub>3-x</sub> supply. Xu *et al.*<sup>50</sup> realized high-quality MoS<sub>2</sub> synthesis over 2-inch wafers through the two-step vapor-solid phase reaction (VSPR) process using MoO<sub>2</sub> as the precursor. The epitaxial MoO<sub>2</sub> film was firstly deposited on 2-inch wafers by pulsed laser deposition (PLD), then loaded into a tube furnace and annealed in a mixture of Ar and S at 900 °C for 1 h at low pressure, resulting in 2D epitaxial MoS<sub>2</sub> films. This quasi-single-crystalline MoS<sub>2</sub> film deposited over the 2-inch wafer was ~3 nm in thickness and can be successfully transferred onto different substrates. Xu *et al.*<sup>51</sup> introduced a new capping layer annealing process (CLAP) to improve the crystalline quality of the as-deposited MoO<sub>2</sub> films and minimized its defects in the synthesis of single-crystalline MoS<sub>2</sub> films on 2-inch wafers. The epitaxial MoO<sub>2</sub> sample was covered with a protective capping layer, such as SiO<sub>2</sub> or Si<sub>3</sub>N<sub>4</sub> with a thickness of 50 nm, and then annealed in the PLD chamber at 900 °C for 1 h. After annealing, the capping layer on MoO<sub>2</sub> can be totally removed by buffered oxide etching (20 : 1) solution. Through the sulfurization of the CLAP-treated epitaxial MoO<sub>2</sub> film in a CVD system with sulfur powder source, wafer-scale single-crystalline MoS<sub>2</sub> films were obtained without texture. The MoO<sub>3</sub> films with desired thickness deposited by ALD is a good candidate for the Mo source in the thin film sulfurization method. Shi *et al.*<sup>52</sup> demonstrated the two-step growth of MoS<sub>2</sub> on sapphire substrates by depositing the MoO<sub>3</sub> film by ALD using Mo(CO)<sub>6</sub> and oxygen plasma as the precursors. The MoO<sub>3</sub> film was sulfurized at 500 °C for 20 min, and followed by 20 min annealing at 900 °C in the sulfur vapor to improve the crystallinity of MoS<sub>2</sub>.

#### 2.4 MOCVD method

The MOCVD technique using metal-organic sources (as shown in Fig. 5), such as Mo(CO)<sub>6</sub> and (C<sub>2</sub>H<sub>5</sub>)<sub>2</sub>S, is generally favorable due to highly uniform and accurately layer-controlled, thus avoiding the need for post-deposition treatment and benefiting large-area MoS<sub>2</sub> synthesis.<sup>53-55</sup> Mun *et al.*<sup>21</sup> reported the kinetics-controlled low-temperature MOCVD method for the direct growth of spatially homogeneous 2D MoS<sub>2</sub> film on a polyimide (PI) substrate at a record low process temperature of 250 °C with the precursors of Mo(CO)<sub>6</sub> and high-purity H<sub>2</sub>S. As an alkali-metal catalyst, sodium chloride (NaCl) was precisely controlled in the MOCVD reactor along with the growth substrate. It takes 8 h to successfully obtained 4-inch scale monolayer MoS<sub>2</sub> film on PI at 250 °C by the precise and continuous feeding of the alkali-metal catalyst during the MOCVD process. The fabricated flexible MoS<sub>2</sub>-FET based on directly grown MoS<sub>2</sub> demonstrate the excellent stability of the electrical properties following a 1000-cycle bending test with a 1 mm radius. Kalanyan *et al.*<sup>53</sup> presented MoS<sub>2</sub> film growth by pulsed MOCVD in a single-wafer reactor using the precursors of (NtBu)<sub>2</sub>(NMe<sub>2</sub>)<sub>2</sub>Mo and Et<sub>2</sub>S<sub>2</sub>. Each reaction cycle consisted of

1.5 s co-injections of (NtBu)<sub>2</sub>(NMe<sub>2</sub>)<sub>2</sub>Mo centered on 2 s injections of Et<sub>2</sub>S<sub>2</sub> and then the reactor was purged with 400 sccm Ar for 4 s, resulting in a 6 s cycle time. Pulsed injections of the precursor vapors facilitated excellent control over the film thickness with a growth rate of 0.12 nm/pulse. The layered wafer-scale MoS<sub>2</sub> films with thickness from ~1 nm to ~25 nm on the SiO<sub>2</sub>/Si substrates can be achieved at comparatively low reaction temperatures of 591 °C at short deposition times, from tens of seconds to several minutes. Shinde *et al.*<sup>54</sup> proposed a gas-phase CVD approach for the synthesis of atomically thin MoS<sub>2</sub> films over 2-inch sapphire wafers with suitable precursors of (NtBu)<sub>2</sub>(NMe<sub>2</sub>)<sub>2</sub>Mo and hydrogen sulfide (H<sub>2</sub>S). A graphite susceptor was designed for handling a 2-inch wafer facing at a 15° angle to the Ar gas flow. The homogeneous MoS<sub>2</sub> films was obtained at 850 °C under 10 Torr with an H<sub>2</sub>S flow of 3 sccm. In this approach, the growth rate of continuous MoS<sub>2</sub> was found to be 1 monolayer (S-Mo-S) per 4 min. Recently, Shinde *et al.*<sup>55</sup> also realized the rapid and large-scale fabrication of the MoS<sub>2</sub> layers directly on SiO<sub>2</sub>/Si (3.5 × 3.5 cm<sup>2</sup>) using (NtBu)<sub>2</sub>(NMe<sub>2</sub>)<sub>2</sub>Mo and H<sub>2</sub>S *via* gas-phase CVD. The seamless growth process allowed the deposition of monolayer MoS<sub>2</sub> films in 4 min with excellent spatial homogeneity and optical quality.

Cun *et al.*<sup>56</sup> developed the wafer-scale growth of high-quality monolayer MoS<sub>2</sub> on single crystalline sapphire and SiO<sub>2</sub> substrates at the 2-inch wafer scale by a facile MOCVD with a spin-coated Mo precursor and a non-toxic sulfur precursor. An aqueous solution of sodium molybdate (Na<sub>2</sub>MoO<sub>4</sub>) was provided as the Mo precursor by spin-coating on the substrates prior to the growth, and the amount of Mo can be controlled by the concentration of Na<sub>2</sub>MoO<sub>4</sub> and the spin-coating speed. The single sulfur precursor was supplied by the non-toxic liquid organic compound diethyl sulphide (C<sub>2</sub>H<sub>5</sub>)<sub>2</sub>S, which is stored in a stainless-steel bubbler and connected to the quartz tube with a mass flow controller (MFC) to precisely control the amount of the required sulfur precursor during the growth. The obtained wafer-scale MoS<sub>2</sub> films exhibit crystallinity and good electrical performance.

Seol *et al.*<sup>57</sup> realized high-throughput production of 6-inch wafer-scale monolayer MoS<sub>2</sub> and WS<sub>2</sub> *via* a pulsed MOCVD technique. A scalable shower-head-type cold-wall reactor system was used and the gas-phase precursors included molybdenum hexacarbonyl (Mo(CO)<sub>6</sub>), (C<sub>2</sub>H<sub>5</sub>)<sub>2</sub>S, and H<sub>2</sub>. Each reaction cycle consisted of 2 min of co-injection of all the precursors, followed by interrupting the precursors' supply and purging with N<sub>2</sub> for 1 min. Periodic interruption of the precursor supply allowed the successful regulation of secondary nucleation even under high growth rates; as a result, wafer-scale monolayer MoS<sub>2</sub> and WS<sub>2</sub> were obtained within 12 min on 6-inch quartz substrates. Moreover, the as-grown TMD films show excellent spatial homogeneity and well-stitched grain boundaries, enabling facile transfer to various target substrates without degradation.

#### 2.5 Vapor-liquid-solid (VLS) method

The reported CVD of 2D MoS<sub>2</sub> is generally conducted through a typical vapor-solid-solid mechanism or a vapor-gas-solid



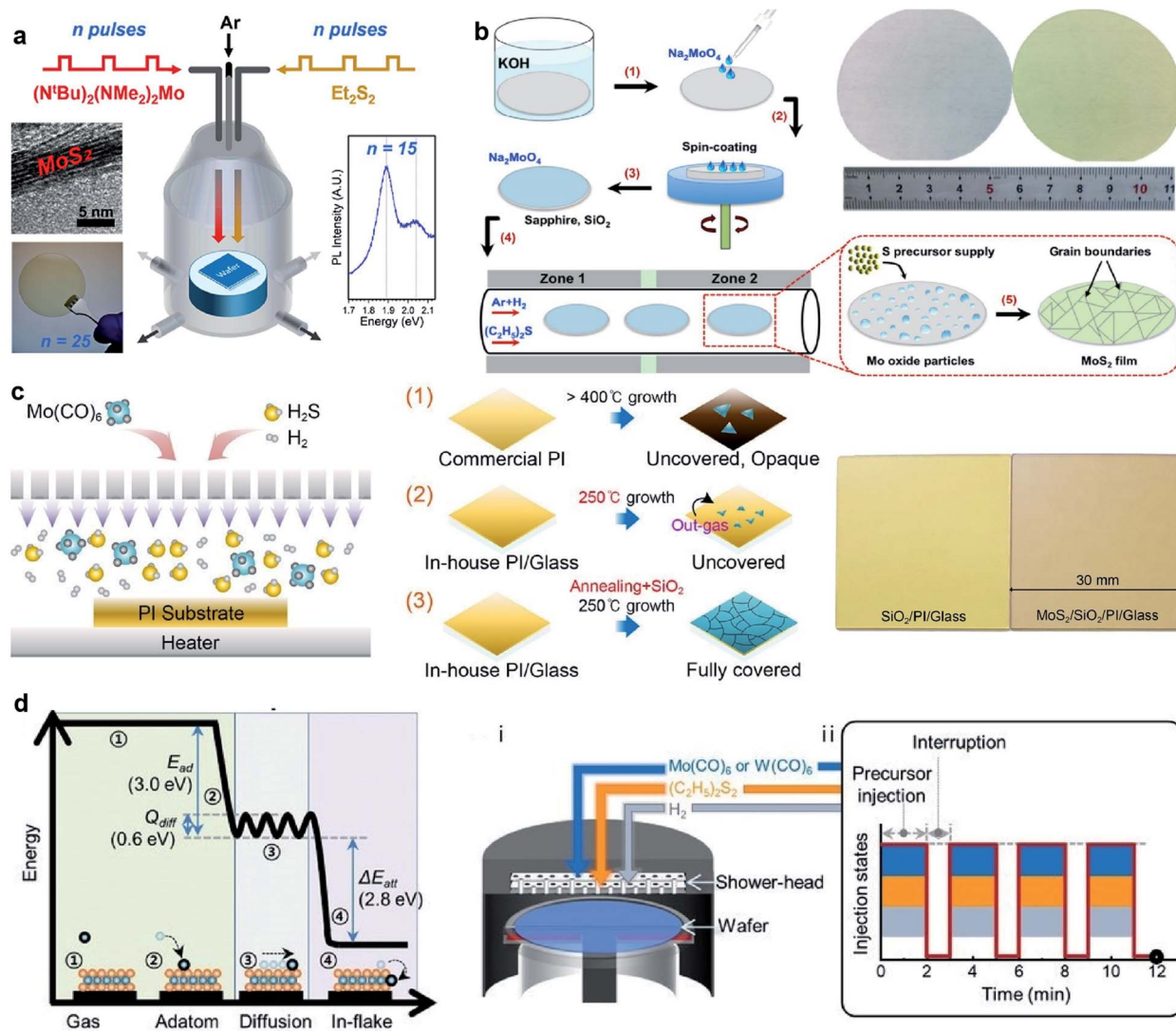


Fig. 5 (a) Schematic of pulsed MOCVD growth for 2H-MoS<sub>2</sub> in a single-wafer reactor geometry via pulsed injections of (NtBu)<sub>2</sub>(NMe<sub>2</sub>)<sub>2</sub>Mo and Et<sub>2</sub>S<sub>2</sub>.<sup>53</sup> Reproduced with permission from ref. 53, copyright 2017 American Chemical Society. (b) Schematic illustration of wafer-scale MoS<sub>2</sub> film growth process and photos of the 2-inch wafers of clean sapphire substrate (left) and the as-grown MoS<sub>2</sub>/sapphire (right).<sup>56</sup> Inset: The proposed mechanism for MoS<sub>2</sub> growth on the substrates. Reproduced with permission from ref. 56, copyright 2019 Springer Nature. (c) Schematic of the direct growth process of MoS<sub>2</sub> on the PI substrate: (1) PI is changed to opaque and sparse MoS<sub>2</sub> islands are grown; (2) the growth of MoS<sub>2</sub> at 250 °C. (3) The heat-annealing and capping procedures prevent the outgassing phenomenon and further absorption in the ambient environment, forming fully-covered MoS<sub>2</sub>.<sup>21</sup> Reproduced with permission from ref. 21, copyright 2019 American Chemical Society. (d) Calculated reaction energy diagram of Mo adsorbed on the basal plane of MoS<sub>2</sub> and the schematic illustration of (i) the reactor geometry and (ii) injection sequence of the precursors for growing wafer-scale monolayer TMD by pulsed MOCVD.<sup>57</sup> Reproduced with permission from ref. 57, copyright 2020 John Wiley and Sons.

mechanism using powdered precursors (MoO<sub>3</sub> and S) or mixed precursors (MoO<sub>3</sub> powders and H<sub>2</sub>S gas), respectively. The vapor-liquid-solid (VLS) growth method often involves molten precursors (*e.g.*, non-volatile Na<sub>2</sub>MoO<sub>4</sub>) at growth temperatures higher than their melting points, which presents great promise in large-area MoS<sub>2</sub> synthesis with large single crystals for electronics.<sup>58–60</sup>

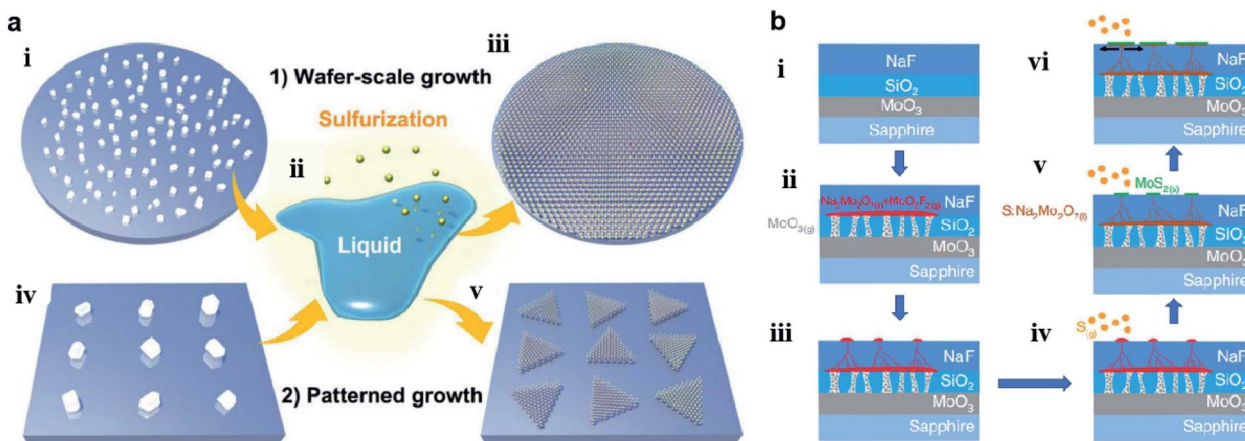
Recently, Li *et al.*<sup>59</sup> demonstrated the VLS growth of uniform monolayer MoS<sub>2</sub> flakes on 4-inch SiO<sub>2</sub>/Si wafers and continuous MoS<sub>2</sub> films with the grain size exceeding 100 μm on 2-inch sapphire substrates using non-volatile precursors. Na<sub>2</sub>MoO<sub>4</sub> particles were first dispersed on the growth substrate by spin-

coating its aqueous solution. Then, Na<sub>2</sub>MoO<sub>4</sub> on the substrates was loaded in the tube furnace and started to melt into a liquid, wetting the substrate surface when the temperature was higher than its melting point (687 °C). Sulfur vapor dissolves into the Na-Mo-O droplets, and the MoS<sub>2</sub> monolayer nucleated and grew from the sulfur over-saturated Na-Mo-O-S liquid on the substrate at 750 °C. Moreover, the Na<sub>2</sub>MoO<sub>4</sub> particles can be patterned on the substrate with the aid of the photolithography process; patterned MoS<sub>2</sub> monolayers with desired sites were grown on the substrate after sulfurization.

Chang *et al.*<sup>60</sup> also utilized a self-capping vapor-liquid-solid (SCVLS) reaction for the growth of large single crystals and full-







**Fig. 6** (a) Schematics of wafer-scale and patterned growth of  $\text{MoS}_2$  monolayers via the VLS method: (i) dispersed  $\text{Na}_2\text{MoO}_4$  particles on sapphire wafer; (ii) molten  $\text{Na}_2\text{MoO}_4$  droplet starts to wet the substrate surface; (iii) sulfurization of the molten  $\text{Na}_2\text{MoO}_4$  droplets leads to the nucleation and growth of the VLS- $\text{MoS}_2$  film on the whole wafer; (iv) patterned  $\text{Na}_2\text{MoO}_4$  particles on the growth substrate with the aid of photolithography; (v) patterned growth of monolayer VLS- $\text{MoS}_2$  flakes by the sulfurization of the site-specific non-volatile  $\text{Na}_2\text{MoO}_4$  droplets.<sup>59</sup> Reproduced with permission from ref. 59, copyright 2019 The Royal Society of Chemistry. (b) Schematics of the SCVLS growth mechanism and the grown  $\text{MoS}_2$ : (i) structure of the solid precursor; (ii)  $\text{MoO}_3$  vaporized and penetrated through the  $\text{SiO}_2$  diffusion membrane.  $\text{MoO}_3$  and  $\text{NaF}$  reacted to form liquid-phase  $\text{Na}_2\text{Mo}_2\text{O}_7$  (colored in red) at the growth temperature; (iii) the liquid precursor gradually rose to the  $\text{NaF}$  matrix surface; (iv) sulfur vapor started to dissolve into the  $\text{Na}_2\text{Mo}_2\text{O}_7$  liquid; (v) liquid precursor sulfidized into the  $\text{MoS}_2$  seed layer; (vi) capped by the  $\text{MoS}_2$ .<sup>60</sup> Reproduced with permission from ref. 60, copyright 2020 Springer Nature.

coverage TMD films. As shown in Fig. 6, a solid precursor comprising ultra-thin  $\text{MoO}_3$ ,  $\text{SiO}_2$ , and  $\text{NaF}$  layers was used for the controllable eutectic reaction of  $\text{MoO}_3$  and  $\text{NaF}$  at high temperature. Firstly,  $\text{MoO}_3$  vapor broke the  $\text{SiO}_2$  layer, diffused upward, and reacted with the  $\text{NaF}$  layer at a temperature higher than  $500^\circ\text{C}$  to form liquid-phase  $\text{Na}_2\text{Mo}_2\text{O}_7$  and gas-phase  $\text{MoO}_2\text{F}_2$ . Simultaneously, the consumption of  $\text{NaF}$  generated holes and pathways in the  $\text{NaF}$  layer, which allowed  $\text{Na}_2\text{Mo}_2\text{O}_7$  and  $\text{MoO}_2\text{F}_2$  to gradually rise to the top surface of the  $\text{NaF}$ . The as-formed eutectic liquid ( $\text{Na}_2\text{Mo}_2\text{O}_7$ ) rose to the surface and was sulfidized into  $\text{MoS}_2$  seeds, which acted as a self-capping layer and redirected the rising liquid into a horizontal direction. The residual liquid was continuously pushed along the growth direction and eventually sulfidized to form new  $\text{MoS}_2$  at the edge of the  $\text{MoS}_2$  seeds, thus making millimeter-sized  $\text{MoS}_2$  single crystals formed on a  $c$ -plane sapphire.

## 2.6 ALD method

ALD exhibits advantages in the precise control of the film thickness, uniformity, and homogeneity over large-scale wafers due to the self-limiting growth mechanism.  $\text{MoS}_2$  films with desired thickness can be obtained by varying the ALD cycles. The ALD procedure combines precursor exposure, purging, reactant exposure, and a final purging into a single cycle. The layers of the ALD  $\text{MoS}_2$  films can be determined by the deposition temperatures and the ALD cycles. Large-area  $\text{MoS}_2$  directly onto  $\text{SiO}_2/\text{Si}$  substrates have been achieved through the ALD method using molybdenum pentachloride ( $\text{MoCl}_5$ ) and  $\text{H}_2\text{S}$  as the precursor and the reactant, respectively.<sup>61</sup> In different reports, the ALD growth temperatures of  $\text{MoS}_2$  ranges from  $350^\circ\text{C}$  to  $900^\circ\text{C}$ .<sup>61–64</sup> Another well-investigated precursor pair for ALD  $\text{MoS}_2$  is  $\text{Mo}(\text{CO})_6/\text{H}_2\text{S}$ . This ALD process features the

high vapor pressure of  $\text{Mo}(\text{CO})_6$  at room temperature and relatively low growth temperature. Jang *et al.*<sup>65</sup> reported  $\text{MoS}_2$  film grown uniformly, reliably, and directly on a 4-inch wafer by ALD using an  $\text{Mo}(\text{CO})_6$  precursor and  $\text{H}_2\text{S}$  plasma as the precursor and reactant without a post-sulfurization process. The growth rate of  $\text{MoS}_2$  on  $\text{SiO}_2/\text{Si}$  was approximately  $0.05\text{ nm}$  per cycle and the deposition temperature ranged from  $175$  to  $225^\circ\text{C}$ . Pyeon *et al.*<sup>66</sup> presented wafer-scale synthesis of  $\text{MoS}_2$  layers on a 4-inch  $\text{SiO}_2/\text{Si}$  wafer with precise thickness controllability and excellent uniformity by ALD in the narrow ALD window of  $155$ – $175^\circ\text{C}$ , with  $\text{Mo}(\text{CO})_6$  and  $\text{H}_2\text{S}$  as the Mo and S precursors, respectively. Post-annealing in the range of  $500$ – $900^\circ\text{C}$  under an  $\text{H}_2\text{S}$  atmosphere efficiently improved the film properties, including the crystallinity and chemical composition. Extremely uniform film growth was achieved even on a 4-inch  $\text{SiO}_2/\text{Si}$  wafer. The growth temperature can be reduced in an ALD process using tetrakis(dimethylamido)-molybdenum(IV) (TDMA-Mo,  $\text{Mo}(\text{NMe}_2)_4$ ) and  $\text{H}_2\text{S}$  as the precursors with an ALD growth rate of  $1.2\text{ \AA}$  per cycle at  $60^\circ\text{C}$ .<sup>67</sup> Then, the obtained amorphous  $\text{MoS}_2$  was treated at  $1000^\circ\text{C}$  under sulfur vapor to improve the crystallinity. Recently, Liu *et al.*<sup>68</sup> developed thickness-controlled  $\text{MoS}_2$  synthesis using  $\text{MoCl}_5$  and hexamethyldisilathiane (HMDST) as the ALD precursors; the films were uniformly deposited on a sapphire and  $\text{SiO}_2/\text{Si}$  substrate after different ALD cycles from 20 to 90. As shown in Fig. 7, the thickness of the as-grown  $\text{MoS}_2$  film after 50 ALD cycles was measured for  $2.9\text{ nm}$  on sapphire and  $\sim 5\text{ nm}$  on the  $\text{SiO}_2/\text{Si}$  wafer with high uniformity.

## 2.7 Thermolysis of thioalts

$\text{MoS}_2$  synthesis by the thermolysis of thioalts is based on the thermal decomposition of ammonium thiomolybdates



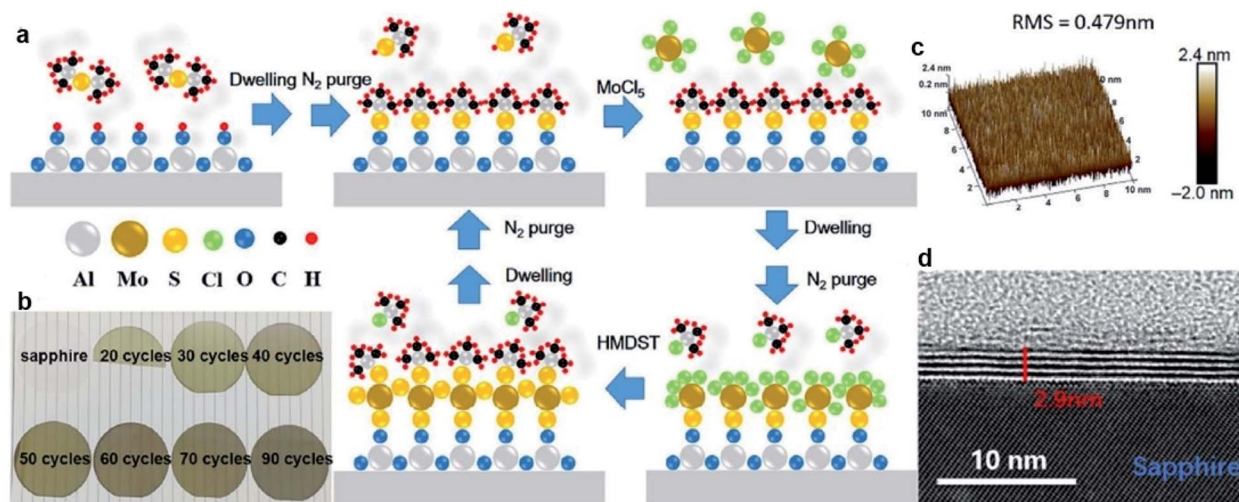


Fig. 7 ALD-grown MoS<sub>2</sub> on the sapphire substrate. (a) Schematic of our ALD-grown MoS<sub>2</sub> films, with MoCl<sub>5</sub> and hexamethyldisilathiane (HMDST) as the precursors. (b) Images of sapphire substrate; 20, 30, 40, 50, 60, 70, and 90 cycles of ALD-grown MoS<sub>2</sub> on sapphire. (c) 3D AFM image of ALD-grown MoS<sub>2</sub> film on a 10 μm × 10 μm area, with the roughness RMS of this region being 0.479 nm. (d) TEM images of an annealed 50-cycle MoS<sub>2</sub> film of 2.9 nm thickness on the sapphire substrate.<sup>68</sup> Reproduced with permission from ref. 68, copyright 2020 Springer Nature.

(NH<sub>4</sub>)<sub>2</sub>MoS<sub>4</sub> in a specific environment, which results in the conversion of (NH<sub>4</sub>)<sub>2</sub>MoS<sub>4</sub> to MoS<sub>2</sub> at a higher temperature. The precursor solution of (NH<sub>4</sub>)<sub>2</sub>MoS<sub>4</sub> can be deposited on different substrates and highly crystalline centimeter-scale MoS<sub>2</sub> can be synthesized after thermal decomposition in a N<sub>2</sub> or sulfur-rich atmosphere.<sup>69–72</sup> Lim *et al.*<sup>71</sup> reported large-area MoS<sub>2</sub> layers by the simple coating of single source precursor with subsequent roll-to-roll-based thermal decomposition with N<sub>2</sub> at 600 °C under 1.8 Torr pressure. An (NH<sub>4</sub>)<sub>2</sub>MoS<sub>4</sub> solution was bar-coated onto a Ni foil and subsequently thermally decomposed using the roll-to-roll process, resulting in 50 cm long MoS<sub>2</sub> layers synthesized on Ni foils with excellent long-range uniformity and optimum stoichiometry. The number of MoS<sub>2</sub> layers can be simply adjusted by optimizing the concentration of (NH<sub>4</sub>)<sub>2</sub>MoS<sub>4</sub> and the solvent conditions. Park *et al.*<sup>72</sup> introduced a direct and rapid method for the layer-selective synthesis of patterned MoS<sub>2</sub> at the wafer-scale using a pulsed laser annealing system ( $\lambda = 1.06 \mu\text{m}$ , pulse duration  $\sim 100$  ps) in ambient conditions. The (NH<sub>4</sub>)<sub>2</sub>MoS<sub>4</sub> precursor was spin-coated on a Si/SiO<sub>2</sub> wafer and annealed at 150 °C for 3 min to evaporate the residual solvents. Then, a pulsed fiber laser was used to induce a local photothermal reaction under sulfur-rich conditions to thermally decompose into MoS<sub>2</sub>. The heat treatment area was precisely defined and the precursor layer in the non-treated area was simply removed by the DMF solvent, leaving a patterned MoS<sub>2</sub> film. Fig. 8(c) and (d) provide the mechanism of selective conversion of (NH<sub>4</sub>)<sub>2</sub>MoS<sub>4</sub> precursors into MoS<sub>2</sub>. Moreover, the ultrafast and selective synthesis of individual patterned MoS<sub>2</sub>, WS<sub>2</sub> layers, and stacked WS<sub>2</sub>/MoS<sub>2</sub> heterojunction structure can be directly realized on a 4-inch wafer.

### 3. Application in basic MoS<sub>2</sub>-FET

The downscaling trend of integrated electronics based on silicon-based micro-fabrication processes lead to continuing

demands for minimizing the channel thickness. 2D MoS<sub>2</sub> with atomic thickness is considered as one of the most promising candidates for advanced electronics with minimum channel thickness. The wafer-scale 2D MoS<sub>2</sub> films synthesized from different methods can be transferred and integrated onto a variety of substrates by PMMA and PDMS, demonstrating many important applications in electronic and optoelectronic devices.<sup>11–13,31</sup> Thus, the fabrication process of wafer-scale MoS<sub>2</sub>-based devices can be more compatible with the traditional CMOS fabrication process. In order to be compatible with typical transistor requirements for electronic applications, many investigations have focused on developing wafer-scale monolayer MoS<sub>2</sub> and high-performance MoS<sub>2</sub>-FET.<sup>11–13</sup> Generally, a typical 2D MoS<sub>2</sub>-FET involves three terminals (namely gate, drain and source), with a basic configuration consisting monolayer or few-layer MoS<sub>2</sub> channel, electrical contacts for the source and drain, dielectric layer, and gate electrode. Jing *et al.*<sup>73</sup> summarized the different 2D FET configurations reported in the previous study for research purposes: (i) back-gated FET with Si as the gate; (ii) back-gated FET with a manufactured metal gate electrode; (iii) top-gated FET; (iv) dual gate FET structure with an Si back gate, (v) dual-gated FET with a patterned back gate; (vi) liquid-gated FET structure. Considering the Schottky barrier and interface scattering effect, the dielectric layer is known to be a key factor for all these configurations, which should be compatible with the 2D channel to suppress extrinsic scattering. Commonly used dielectric layers include inorganic materials and some polymers, such as SiO<sub>2</sub>, Al<sub>2</sub>O<sub>3</sub>, HfO<sub>2</sub>, ZrO<sub>2</sub>, PVDF, PMMA, and CaF<sub>2</sub>.<sup>74–81</sup> Few-layer graphene, h-BN and MoSe<sub>2</sub> are also considered as dielectrics to improve the field effect mobility in MoS<sub>2</sub>-FET.<sup>82–84</sup> Another key issue is contact and channel engineering in the FET device fabrication based on large-area 2D MoS<sub>2</sub> films. The terminals of the drain and the source refer to the metal electrode, such as Au, Cr/Au, Ti/Au, Pd/





**Fig. 8** Layer-selective synthesis of MoS<sub>2</sub> and WS<sub>2</sub>. (a) Schematic illustration of the selective synthesis of MoS<sub>2</sub>- and WS<sub>2</sub>-based homostructures. (b) Photograph of patterned MoS<sub>2</sub> and WS<sub>2</sub> on the 2-inch SiO<sub>2</sub>/Si substrate. (c and d) Synthetic mechanism of MoS<sub>2</sub> and the absorption coefficient profile of each layer. (e) Raman spectra of synthesized MoS<sub>2</sub> and WS<sub>2</sub>. (f) SEM image of the line-patterned MoS<sub>2</sub> with different scribing speeds. (g) Pattern width and pitch variation as a function of the scribbling speed. (h) Three-dimensional surface morphology of MoS<sub>2</sub>.<sup>72</sup> Reproduced with permission from ref. 72, copyright 2020 American Chemical Society.

Au, Ni/Au, and Cr/Pt, which is deposited and patterned *via* electron beam evaporation and the lithography process. Due to the Schottky barrier and Fermi level pinning at the metal/semiconductor interface, different investigations in MoS<sub>2</sub>-FET have been made to minimize the contact resistance and realize near-ohmic contacts by choosing appropriate work function metals, creating an ultra-clean interface, inserting a buffer layer, *etc.*<sup>85–91</sup> In this regard, extensive efforts have been devoted to investigate 2D MoS<sub>2</sub>-FET based on wafer-scale monolayer or few-layer MoS<sub>2</sub> with different device configurations and dielectric layers.

### 3.1 Configurations and fabrications

Similar to that of traditional silicon-based FET, different configurations of FET based on 2D MoS<sub>2</sub> have been studied in recent years. The most common configurations include: (1) back-gated MoS<sub>2</sub>-FET, (2) top-gated MoS<sub>2</sub>-FET, (3) dual-gated

MoS<sub>2</sub>-FET. These MoS<sub>2</sub>-FET devices can be fabricated through a series of general processes with different processing sequences, including MoS<sub>2</sub> patterning, dielectric layer deposition, metal electrode deposition, and patterning. Most MoS<sub>2</sub> channels are patterned by controlled plasma etching or the lithographic method after MoS<sub>2</sub> synthesis or transfer, while other MoS<sub>2</sub> channels can be realized from the patterned thin-film Mo precursor after sulfurization.<sup>76,91–97</sup> The dielectric layer of Al<sub>2</sub>O<sub>3</sub>, HfO<sub>2</sub>, and ZrO<sub>2</sub> are usually deposited by ALD, while PVDF and PMMA are prepared by the spin-coating method. The metal electrodes can be defined and deposited by e-beam evaporation after the photolithography process or e-beam evaporation with shadow masks.

(i) **Back-gated MoS<sub>2</sub>-FET.** Back-gated MoS<sub>2</sub>-FET with Si as the gate is the most widely used configuration in basic studies, with SiO<sub>2</sub> as a typical dielectric layer. In this configuration, 2D MoS<sub>2</sub> is directly grown or transferred on the SiO<sub>2</sub>/Si substrate and then selectively etched to form the channel by plasma.



Finally, the source/drain contacts are prepared by a sequential lithography process, including photolithography, e-beam evaporation, and lift-off. For instance, Kim *et al.*<sup>75</sup> presented the successful integration of the devices based on  $\sim 1200$  back-gated MoS<sub>2</sub>-FET arrays with a yield of 95% on 4-inch SiO<sub>2</sub>/Si wafers. As shown in Fig. 9, large-area MoS<sub>2</sub> films were synthesized by MoO<sub>3</sub> pre-deposition on a sapphire substrate *via* radio frequency (RF) sputtering and following sulfurization *via* CVD. The as-synthesized four-layered MoS<sub>2</sub> film was transferred from the sapphire substrates onto the SiO<sub>2</sub>/Si substrates by PMMA and then patterned for the channel region of the FET array devices *via* reactive ion etching. Au/Cr metallic electrodes were fabricated by a sequential lithography process. This growth technique could yield wafer-scale MoS<sub>2</sub> thin film such that an array of approximately 1200 MoS<sub>2</sub> transistors occupying a 2-inch active area of a 4-inch silicon wafer could function well, with excellent electrical characteristics.

Back-gated FET with patterned metal or semiconducting gate electrode is another configuration used in MoS<sub>2</sub>-FET. Seol *et al.*<sup>55</sup> fabricated back-gate MoS<sub>2</sub>-FETs on a 6-inch wafer with Ti/Au as the back-gate contact and ALD-Al<sub>2</sub>O<sub>3</sub> as the gate dielectric. The as-grown MoS<sub>2</sub> film was transferred by PMMA and patterned using photolithography and O<sub>2</sub> plasma etching after the deposition of Ti/Au and Al<sub>2</sub>O<sub>3</sub>. Wei *et al.*<sup>87</sup> developed a flexible back-gated MoS<sub>2</sub>-FET fabricated on low-cost

polyethylene terephthalate (PET) substrates by 2D MoS<sub>2</sub> and dielectric ceramic Bi<sub>2</sub>MgNb<sub>2</sub>O<sub>9</sub> (BMN). Recently, Li *et al.*<sup>13</sup> reported flexible MoS<sub>2</sub>-FET arrays on the PET substrate with an improved device density of 1518 per cm<sup>2</sup>. The wafer-scale MoS<sub>2</sub> monolayers grown on sapphire were transferred onto PET substrates with pre-deposited ITO and Al<sub>2</sub>O<sub>3</sub>, which serve as the back-gate electrode and dielectric layer. It is also demonstrated that Au/Ti/Au rather than Ti/Au is an excellent contact structure to reduce contact resistance in the monolayer MoS<sub>2</sub> devices. Lan *et al.*<sup>88</sup> demonstrated both N-type and P-type MoS<sub>2</sub>-FET by directly growing MoS<sub>2</sub> on the fin oxide structure by the CVD method. The fin oxide structures selectively-implanted Si contacts lead to N-type and P-type MoS<sub>2</sub> film growth on a wafer/chip, which can be compatible with the Si-based fabrication process. The SiO<sub>2</sub> interfacial layer and HfO<sub>2</sub> high-k dielectric were deposited on CVD-grown MoS<sub>2</sub> by ALD, followed by metal-gate deposition. The Fin-FET based on MoS<sub>2</sub> synthesized from the P<sup>+</sup>-Si and N<sup>+</sup>-Si contact presented P-type and N-type performance, respectively, which can be integrated as a complementary MoS<sub>2</sub> inverter for basic integrated circuit complementary device applications.

(ii) **Top-gated MoS<sub>2</sub>-FET.** The structure of the top-gated FET is similar to that of the back-gated one, with the main difference that the patterned gate electrode is placed above the 2D channel. In this configuration, the top gate insulator can

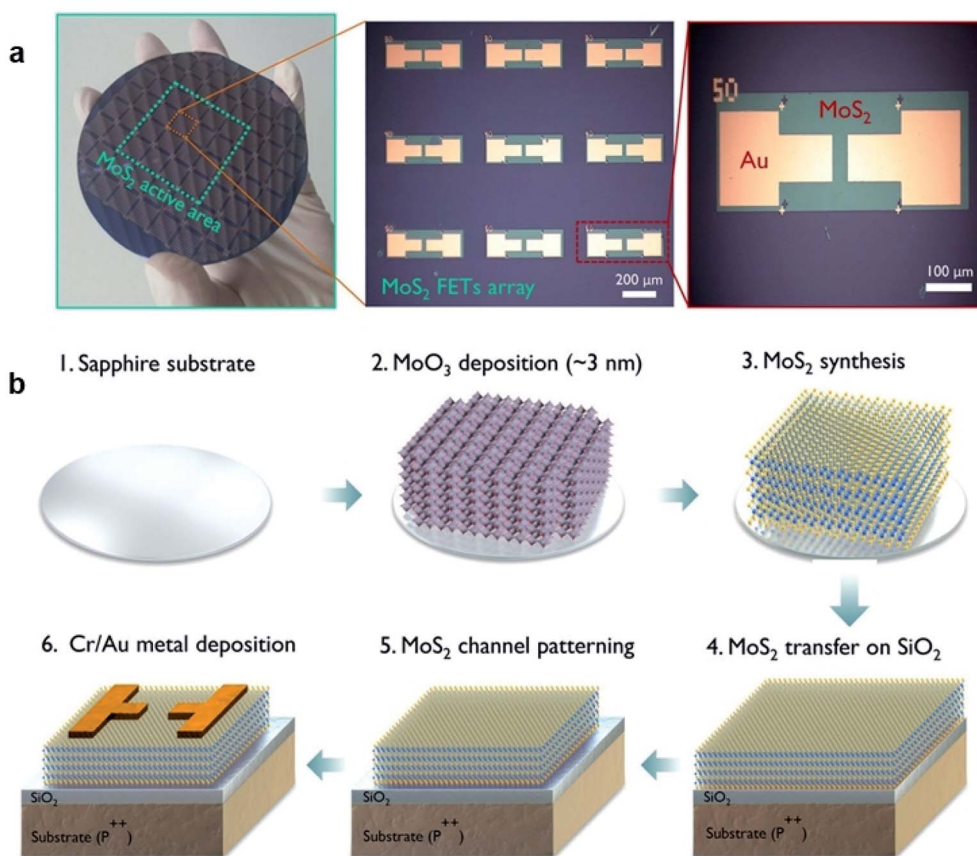


Fig. 9 (a) Optical image of the 2D MoS<sub>2</sub>-FET array devices integrated on a 4-inch SiO<sub>2</sub>/Si wafer and (b) the sequence of the fabrication process for MoS<sub>2</sub> array devices.<sup>75</sup> Reproduced with permission from ref. 75, copyright 2017 American Chemical Society.



also work as an encapsulating layer covering the entire MoS<sub>2</sub> channel, which can both improve the stability and the mobility of MoS<sub>2</sub>-FET.

Zhang *et al.*<sup>76</sup> successfully fabricated top-gated MoS<sub>2</sub>-FET arrays based on wafer-scale continuous MoS<sub>2</sub> film using wafer-scale Si shadow masks (Si-SMs) with customized patterns. Metal deposition and plasma etching by the Si-SMs exhibit well-defined patterns with sharp edges. As shown in Fig. 10, top-gated MoS<sub>2</sub>-FET arrays were fabricated using two different processing strategies assisted by the Si-SMs: 'etching-last' and 'channel-first'. For the 'etching-last' strategy, the metal contacts were deposited with the Si-SMs at the beginning, followed by the plasma etch to isolate a continuous film with Si-SM as the protective layer. For the 'channel-first' method, a layer of Mo metal defined by Si-SM was deposited on the sapphire substrate. Then, the patterned Mo was subsequently sulfurized in a sulfur-rich atmosphere at 900 °C to form a patterned polycrystalline MoS<sub>2</sub> film. The MoS<sub>2</sub>-FET arrays can be obtained after dielectric growth and top gate deposition, without suffering from photoresist residue and long-time immersion in the photoresist remover.

Wang *et al.*<sup>33</sup> built top-gated FET with a high- $\kappa$  HfO<sub>2</sub> directly fabricated from the CVD-grown monolayer MoS<sub>2</sub>. The MoS<sub>2</sub> active regions for the transistors were defined in a patterning step, followed by a CHF<sub>3</sub>-based reactive ion etching process. After that, Ti/Au source/drain electrodes were formed by

electron beam evaporation, following the patterning step. The gate dielectric of HfO<sub>2</sub> was grown by ALD and the top-gate Ti/Au was deposited, followed by a standard lift-off process. Similar to the back-gate FET, P(VDF-TrFE) and PMMA were also reported as the gate dielectric by spin-coating in the top-gated MoS<sub>2</sub>-FET.<sup>79</sup>

(iii) **Dual-gated MoS<sub>2</sub>-FET.** This device configuration with both back-gate and top-gate can provide the highest degree of controllability of the charge carriers in the 2D channel, which can use a doped-Si substrate or patterned back-gate. Zhang *et al.*<sup>99</sup> demonstrated a dual-gated FET structure to improve the electrostatic control of MoS<sub>2</sub>-FET with bilayer MoS<sub>2</sub>. In this configuration, a patterned Au electrode array and 15 nm HfO<sub>2</sub> layer were deposited on the SiO<sub>2</sub>/Si substrate to form the back gate and the back gate dielectric layer, respectively, as shown in Fig. 11. The bilayer-MoS<sub>2</sub> film was then transferred onto this substrate and patterned by plasma etching. After source/drain electrode deposition, a second layer of 15 nm HfO<sub>2</sub> layer as the top dielectric layer and Au top gate electrodes were deposited, leading to a dual-gated FET structure to the back and top gates with a symmetric high- $\kappa$  dielectric layer. Compared with the single-gated MoS<sub>2</sub>-FET, the array with 81 dual-gated bilayer MoS<sub>2</sub>-FETs exhibits an excellent solution to compensate for the degradation of electrostatic control. Liao *et al.*<sup>100</sup> reported similar dual-gated MoS<sub>2</sub>-FET with symmetric back-gated and top-gated architecture based on exfoliated MoS<sub>2</sub> and CVD-

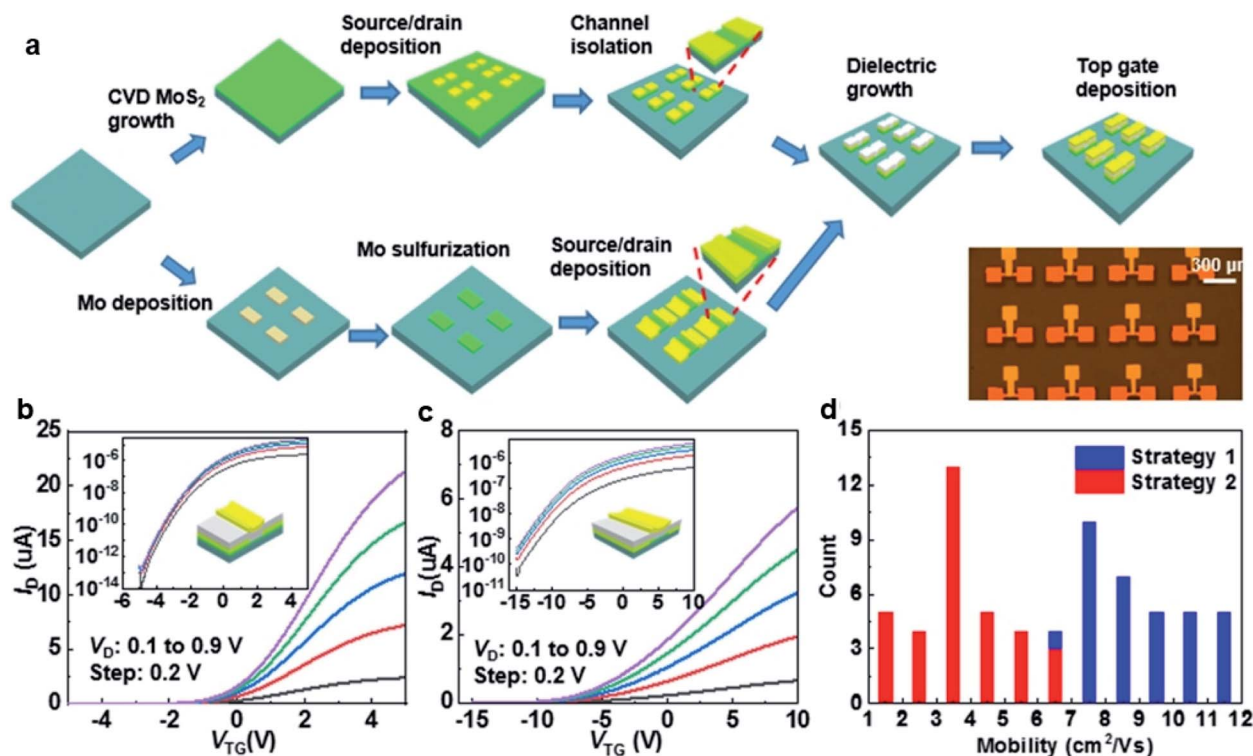


Fig. 10 (a) Schematic illustration of strategy 1: 'etching-last' and strategy 2: 'channel-first'. The bottom right corner shows an optical image of the as-fabricated MoS<sub>2</sub>-FET device arrays. The transfer characteristics of the top-gated transistor fabricated using (b) 'etching-last' and (c) 'channel-first' at different V<sub>DS</sub>. The insets show the corresponding transfer curves on a log-scale. (d) Histograms of the effective mobility of the CVD arrays fabricated with the two strategies.<sup>76</sup> Reproduced with permission from ref. 76, copyright 2020 IOP Publishing, Ltd.



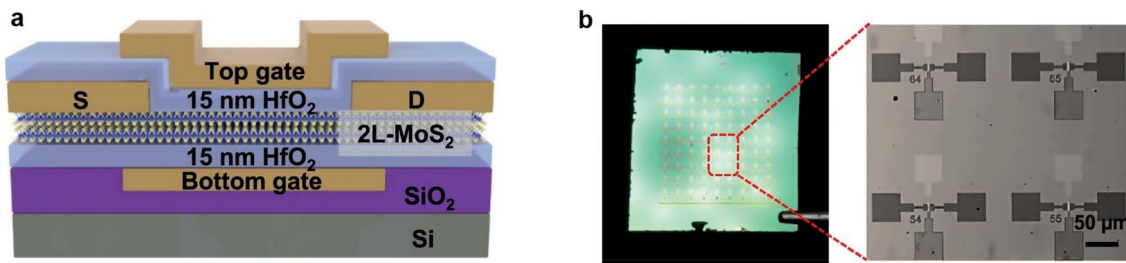


Fig. 11 Schematic illustration, optical images, and electrical characteristics of the dual-gated MoS<sub>2</sub> device. (a) Cross-sectional schematic of the dual-gated MoS<sub>2</sub> device. (b) Photograph of a dual-gated bi-layer MoS<sub>2</sub> transistor array on a 1 × 1 cm<sup>2</sup> wafer (left) and an optical microscopic image (right) of the zoom-in area at the left.<sup>99</sup> Reproduced with permission from ref. 99, copyright 2019 IOP Publishing, Ltd.

synthesized MoS<sub>2</sub> continuous film. Furthermore, dual-gated MoS<sub>2</sub>-FET with multi-layer graphene floating gate (FG) and ionic top gate are also reported in multiple operating conditions to demonstrate different electronic applications.<sup>84,101</sup>

### 3.2 Characterization and performances

The characterization of synthesized MoS<sub>2</sub> films and fabricated MoS<sub>2</sub>-FETs is essential for both fundamental research and practical application. The basic characterization of 2D MoS<sub>2</sub> consists of lateral size, thickness, morphology, PL spectroscopy, and Raman spectroscopy, which can be measured by optical microscopy, atomic force microscopy (AFM), photoluminescence spectrometry, and Raman spectroscopy, as shown in Fig. 7(c), (d) and 8(e), (h). Further information of the 2D MoS<sub>2</sub> film, such as grain size, grain boundaries, lattice orientations, phase composition, and structural defect determination, can be inferred from various microscopy techniques, such as scanning tunneling microscopy (STM), high-resolution transmission electron microscopy (HRTEM), and low-energy electron diffraction (LEED). In addition, the X-ray diffraction (XRD) technique, X-ray photoelectron spectroscopy (XPS), and ultraviolet-visible (UV-vis) spectrophotometry were also applied for the investigation of the film quality and the optoelectronic property based on 2D MoS<sub>2</sub>.

The typical characterization of 2D MoS<sub>2</sub>-FETs refers to the current flowing between the drain and the source ( $I_{ds}$ ), which can be controlled by tuning the gate voltage ( $V_g$ ) and the drain-source voltage ( $V_{ds}$ ). The main figures of merit of an FET are the transfer characteristic ( $I_{ds}$  vs.  $V_g$ , for a specific  $V_{ds}$ ) and the output characteristic ( $I_{ds}$  vs.  $V_{ds}$ , for various  $V_g$ ). The measurement transfer characteristic ( $I_{ds}$  –  $V_g$ ) and the output characteristic ( $I_{ds}$  –  $V_{ds}$ ) of the 2D MoS<sub>2</sub>-FET were usually carried out on a semiconductor parameter analyzer (such as Keithley 4200-SCS) at room temperature. From the transfer characteristic, several important operational parameters of the FET can be extracted, such as the current ratio between the ON and OFF states ( $I_{on}/I_{off}$ ), threshold voltage ( $V_{th}$ ), field effect mobility ( $\mu_{FE}$ ), and subthreshold slope (SS). The value field effect mobility and subthreshold slope can be evaluated using eqn (1) and (2)

$$\mu_{FE} = \left[ \frac{dI_{ds}}{dV_g} \right] \times \left[ \frac{L}{WC_g V_{ds}} \right] \quad (1)$$

$$SS = \frac{d(\log I_{ds})}{dV_g} = \left[ \frac{dV_g}{d(\log I_{ds})} \right] \quad (2)$$

in which  $L$  is the channel length,  $W$  is the channel width, and  $C_g$  is the capacitance between the channel and the gate per unit area.

Since the performance is directly affected by the MoS<sub>2</sub> quality and device configuration, different factors should be considered in 2D MoS<sub>2</sub>-FETs, such as film thickness, grain size, defect situation, electrode/channel contact resistance, dielectric layer, channel length, and channel width. The improved quality of the wafer-scale MoS<sub>2</sub> films with larger grain size and less defects is preferred in MoS<sub>2</sub>-FET with different configurations. The resistance of the electrode/channel contact caused by the Schottky barrier and Fermi-level pinning at the metal/channel interface can be reduced by the post-annealing process, optimizing the stacked metal electrode, and inserting a buffer layer.<sup>85–87,90–92</sup> Since the large dielectric constant of the high- $k$  material contributes to the reduction of the effective size of the Coulomb impurities, different dielectric layers, such as SiO<sub>2</sub>, HfO<sub>2</sub>, Al<sub>2</sub>O<sub>3</sub>, LiNbO<sub>3</sub>, CaF<sub>2</sub>, PMMA, PVDF, h-BN, and graphene, have been utilized as the gate dielectric to improve the mobility of 2D MoS<sub>2</sub>-FET.<sup>75–84</sup> The dielectric layer can also be used on the top of the MoS<sub>2</sub> channel, function as the encapsulation layer, and to provide a dielectric environment to improve the device performance and reliability. The performance of different 2D MoS<sub>2</sub>-FETs based on the monolayer and few-layer MoS<sub>2</sub> films are summarized in Table 1.

From Table 1, it can be inferred that the performance of MoS<sub>2</sub>-FET varies considerably from device to device. Different factors, such as MoS<sub>2</sub> thickness, device configuration, dielectric choice, channel size, and fabrication process, interact and simultaneously affect the performance of MoS<sub>2</sub>-FET. Even though the field effect mobility is still behind the highest reported value ( $167 \pm 20 \text{ cm}^2 \text{ V}^{-1} \text{ s}^{-1}$ ) from the exfoliated MoS<sub>2</sub>,<sup>14</sup> the  $I_{on}/I_{off}$  ratio and field effect mobility of MoS<sub>2</sub>-FET based on wafer-scale monolayer MoS<sub>2</sub> is encouraging. Considering the complicated fabrication procedures and different repeatability, it is difficult to make simple comparisons between different devices based on the monolayer MoS<sub>2</sub> film from different synthetic methods. Overall, more developments are needed for realizing high-performance MoS<sub>2</sub>-FET with larger mobility,



Table 1 Performance parameters of 2D MoS<sub>2</sub>-FETs based on wafer-scale MoS<sub>2</sub> films

MoS <sub>2</sub>	Configurations	Dielectrics	L (μm)	μ <sub>FE</sub> (cm <sup>2</sup> V <sup>-1</sup> s <sup>-1</sup> )	I <sub>on</sub> /I <sub>off</sub> ratio	SS (mV dec <sup>-1</sup> )	Ref.
Monolayer on sapphire by CVD	Top-gated	HfO <sub>2</sub>	3.5	0.1–3	>10 <sup>6</sup>	130	8
4-Inch monolayer by CVD	ITO back-gated	Al <sub>2</sub> O <sub>3</sub>	6	~55	10 <sup>10</sup>		13
Few-layer by exfoliation	Back-gated	SiO <sub>2</sub>	2	167 ± 20			14
8-Inch monolayer by MOCVD	Back-gated	SiO <sub>2</sub>	10	0.47	5.4 × 10 <sup>4</sup>		18
4 inch-scale by MOCVD	Back-gated	SiO <sub>2</sub>		7–12	10 <sup>4</sup> –10 <sup>7</sup>		21
6-Inch monolayer by CVD	Back-gated	SiO <sub>2</sub>	1	6.3–11.4	10 <sup>5</sup> –10 <sup>6</sup>		24
Monolayer by Au-assisted exfoliation	Top-gated	SiO <sub>2</sub>		22.1–32.7	~10 <sup>7</sup>	100	30
2-Inch monolayer by CVD	Back-gated	SiO <sub>2</sub>	30–60	~40	~10 <sup>6</sup>		31
2-Inch continuous by CVD	Top-gated	HfO <sub>2</sub>	10–100	70	10 <sup>7</sup>	150	32
4-Inch monolayers by CVD	Back-gated	SiO <sub>2</sub>	10	~70	~10 <sup>9</sup>		33
Monolayer by APCVD	Back-gated	Al <sub>2</sub> O <sub>3</sub>		0.033	5.8 × 10 <sup>5</sup>		34
Wafer-scale monolayer by CVD	Back-gated	SiO <sub>2</sub>	20	1.2			35
Monolayers on Au by CVD	Back-gated	SiO <sub>2</sub>	5	~11.2	7.7 × 10 <sup>5</sup>		37
Continuous monolayer by CVD	Back-gated	SiO <sub>2</sub>	1	~9.8	3.1 × 10 <sup>6</sup>		40
2-Inch by PLD and sulfurization	Top-gated	HfO <sub>2</sub>	90	8.85	~10 <sup>5</sup>		50
Monolayer by MOCVD	Back-gated	SiO <sub>2</sub>	10	21.6			51
Monolayer on 2-inch sapphire	Top-gated	Al <sub>2</sub> O <sub>3</sub>	15	~0.76	~10 <sup>4</sup>		52
3.5 × 3.5 cm <sup>2</sup> monolayer by CVD	Back-gated	SiO <sub>2</sub>	20	1.3 × 10 <sup>-2</sup>	~10 <sup>4</sup>	8300	55
2-Inch monolayer by MOCVD	Back-gated	SiO <sub>2</sub>	10	21.6			56
Monolayer by MOCVD	Ti/Au back-gated	Al <sub>2</sub> O <sub>3</sub>	10	3.4 ± 0.3	10 <sup>7</sup>		57
Monolayers by VLS	Back-gated	SiO <sub>2</sub>		21.1	10 <sup>7</sup> –10 <sup>9</sup>		59
1.5 × 1.5 cm <sup>2</sup> monolayer by VLS	Back-gated	SiO <sub>2</sub>	1.48	33	>10 <sup>8</sup>	980	60
Few-layer on sapphire by ALD	Top-gated	Al <sub>2</sub> O <sub>3</sub>	25	0.56	10 <sup>6</sup>		68
Continuous monolayer by CVD	Top-gated	Al <sub>2</sub> O <sub>3</sub>		6.44	>10 <sup>8</sup>		76
10 × 10 mm <sup>2</sup> monolayer by CVD	Back-gated	HfO <sub>2</sub>	6	118	10 <sup>8</sup>		77
Monolayer and bilayer by CVD	Dual-gated	Y <sub>2</sub> O <sub>3</sub> /HfO <sub>2</sub>	10	1–9	>10 <sup>6</sup>		90
Monolayer by CVD	Back-gated	SiO <sub>2</sub>		2.87	3.2 × 10 <sup>6</sup>		96
Bilayer by CVD	Dual-gated	HfO <sub>2</sub>	10	32.5		~800	99

higher  $I_{on}/I_{off}$  ratio, steeper subthreshold slope, and better stability. With the development of MoS<sub>2</sub> synthesis and MoS<sub>2</sub>-FET engineering, the improved basic performance of wafer-scale MoS<sub>2</sub> devices will render the wafer-scale MoS<sub>2</sub> film to be a promising candidate for next-generation electronics, which can be compatible with the traditional silicon-based fabrication process.

## 4. Toward practical application

Although the charge carrier mobility of 2D MoS<sub>2</sub>-FET is not directly comparable to that of Si-based devices, the high  $I_{on}/I_{off}$  ratios and low stand-by power suggests suitable application for low-power electronics and optoelectronics. To advance one step further from a single FET to a complex device, the explorations of electronic devices and optoelectronic devices based on 2D MoS<sub>2</sub>, such as N-metal-oxide-semiconductor (NMOS) inverters, logic gate circuits (NAND, NOR, NOT, AND), content-addressable memory (TCAM), and integrated photodetectors, presents great potential application of 2D MoS<sub>2</sub>-FET for future integrated electronics and flexible optoelectronics.<sup>13,68,98,101–142</sup>

### 4.1 Logic devices

To build a working logic device, basic requirements are necessary for voltage switching and high frequency operation, such as high  $I_{on}/I_{off}$  ratio (>1000) and moderate mobility. In practical

applications, different individual MoS<sub>2</sub>-FET can be integrated with necessary designs for realizing an inverter. Shin *et al.* realized a logic inverter and NAND gate based on the GaS/MoS<sub>2</sub> heterostructure comprising a switching transistor and a load resistor. The upper transistor is the load resistor with the transistor gate connected to the output electrode, while the lower transistor acts as a switch by applying an input signal to the gate.

Liu *et al.*<sup>68</sup> realized an inverter from two top-gated MoS<sub>2</sub>-FETs and constructed several complex logic devices from 3 or 5 MoS<sub>2</sub>-FETs. The top-gated FETs based on the wafer-scale MoS<sub>2</sub> synthesized by the ALD method show a high on/off ratio at 10<sup>6</sup> and a carrier mobility of 0.56 cm<sup>2</sup> (V<sup>-1</sup> s<sup>-1</sup>). An inverter with a fast response was fabricated using two N-type MoS<sub>2</sub>-FETs (a load FET and a pull-down FET) with a different width of the channel, while the gate electrode of the pull-down FET serves as the input terminal. The NAND and NOR gates with three or five FETs were built successfully based on the load FET and the pull-down FET with channel sizes of  $L = 5 \mu\text{m}$ ,  $W = 50 \mu\text{m}$ , and  $L = W = 5 \mu\text{m}$ . Two different input voltages,  $-5 \text{ V}$  and  $8 \text{ V}$ , correspond with the input state of '0' and '1', respectively. Then, the AND and OR gates were realized by connecting the NAND and NOR gates with the inverter logic afterwards.

Li *et al.*<sup>13</sup> fabricated flexible top-gated MoS<sub>2</sub>-FETs with different channels and demonstrated the application in integrated flexible logic devices. The devices exhibit on/off ratios of  $\sim 10^{10}$ , carrier mobilities of  $\sim 55 \text{ cm}^2 \text{ V}^{-1} \text{ s}^{-1}$ , and good stability and strong tolerance under strain. As shown in Fig. 12, flexible

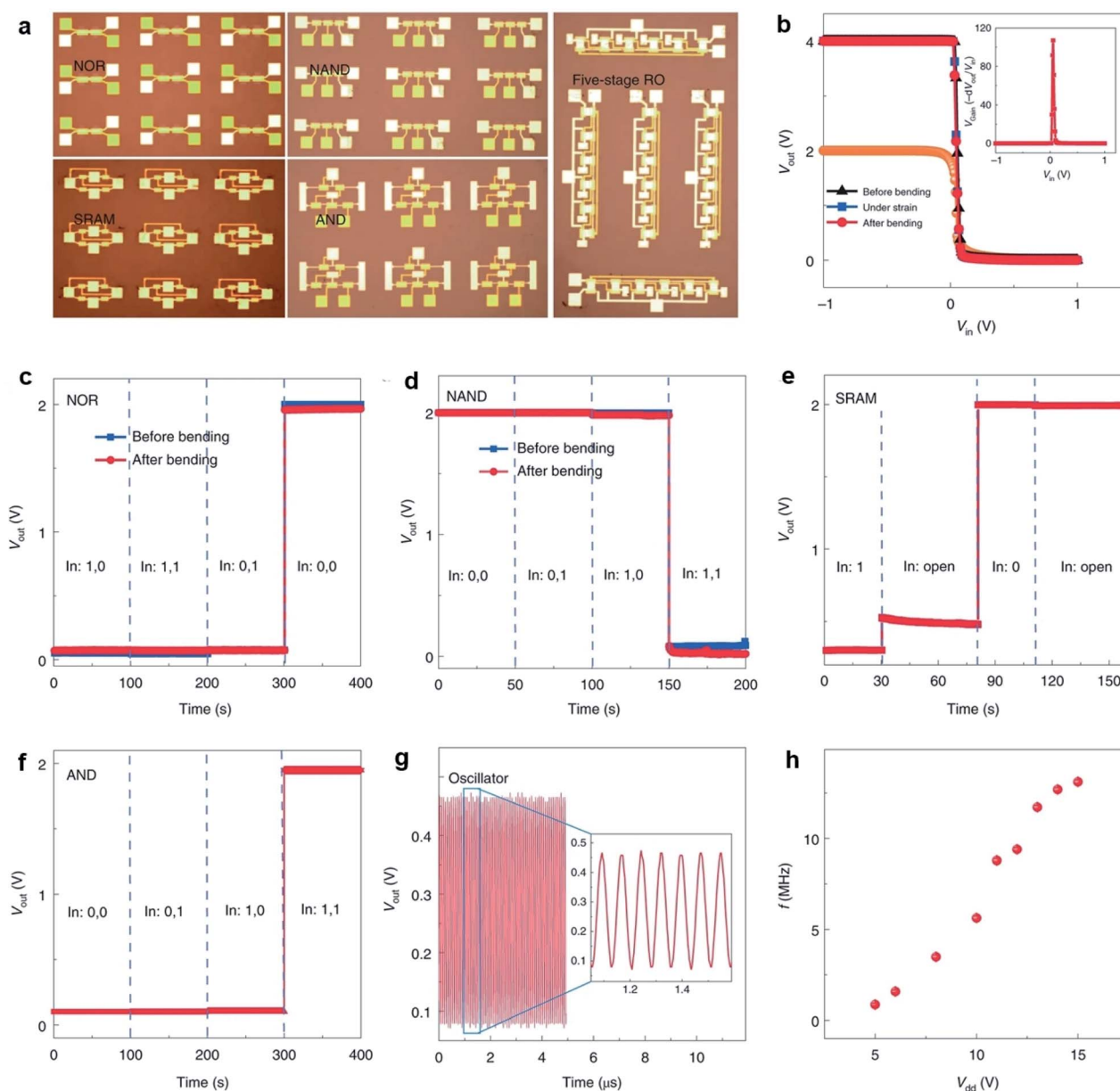


logic devices such as inverters, NOR gates, NAND gates, SRAMs, AND gates, and five-stage ring oscillators can be realized by integrating 2, 2, 3, 4, 5, and 12 MoS<sub>2</sub>-FETs, respectively. The inverter shows high voltage gains of 43 and 107 at bias voltages of  $V_{dd} = 2$  V and 4 V, respectively. The outputs of the NOR and NAND gates are in two states (0 V and 2 V) by combining two input voltages logically at  $V_{dd} = 2$  V and are stable after bending. Two different input voltages, 0 V and 5 V, correspond to the input state of '0' and '1', respectively. The flip-flop memory cell (SRAM) consisting of two inverters exhibit two stable output states, 0 V and 2 V, at  $V_{dd} = 2$  V. The AND gate is constructed from a NAND gate and an inverter at  $V_{dd} = 2$  V, with a settable

state 0 V or 2 V by modifying the two input voltage states. A five-stage ring oscillator was integrated by five inverters and an additional inverter as the output buffer to eliminate the interference. Oscillation frequencies of 860 kHz and 13 MHz were achieved in the flexible ring oscillator when applying  $V_{dd} = 5$  V and  $V_{dd} = 15$  V, respectively.

## 4.2 Memory devices

Memory devices, such as dynamic random access memory (DRAM), static random access memory (SRAM), and resistive RAM (RRAM), are essential for digital data storage. 2D MoS<sub>2</sub>-



**Fig. 12** (a) Photographs of different MoS<sub>2</sub> integrated devices on flexible substrates. (b) Output voltage of an inverter as a function of input voltage when under different bending states. Inset: voltage gain of the inverter under an input of 4 V. Output characteristics of flexible NOR (c) and NAND (d) gates before and after bending at  $V_{dd} = 2$  V. Logic '0' and '1' mean 0 V and 5 V, respectively, for these and all the following logic devices. Output characteristics of flexible SRAM (e) and AND (f) gates at  $V_{dd} = 2$  V. (g) Output waveform of a five-stage ring oscillator at  $V_{dd} = 15$  V. (h) Output frequency as a function of supply voltage  $V_{dd}$ .<sup>45</sup> Reproduced with permission from ref. 13, copyright 2020 Springer Nature.





FET is also advantageous in the applications of memory devices. The low leakage currents and high off state in monolayer MoS<sub>2</sub>-FET can reduce the total power consumption and lead to high speed. Meanwhile, MoS<sub>2</sub> with atom thickness is immune to short channel effects suitable for large-scale and tight integration with small footprints. Liao *et al.*<sup>100</sup> reported DRAM applications based on dual-gated MoS<sub>2</sub>-FET with excellent electrostatic control of the channel current. A 1T1C DRAM unit cell consisting of a metal-insulator-metal capacitor and a dual-gated MoS<sub>2</sub>-FET was fabricated on a sapphire substrate. Yang *et al.*<sup>112</sup> demonstrated a TCAM architecture formed by integrating monolayer MoS<sub>2</sub>-FET with HfO<sub>x</sub>-RRAM in a two-transistor-two-resistor (2T2R) layout, as shown in Fig. 13. The MoS<sub>2</sub>-FETs are based on continuous, CVD-grown monolayer MoS<sub>2</sub> and have 5 nm HfO<sub>x</sub> and 22 nm Al<sub>2</sub>O<sub>3</sub> as the top gate dielectric, with channel width  $W = 50 \mu\text{m}$  and channel length  $L = 0.8 \mu\text{m}$ . The high on/off ratio up to  $2 \times 10^7$  not only provides enough current drive to the RRAMs but also sustains sufficiently large voltages for programming the RRAMs. In a device with one-transistor-one-resistor (1T1R) configuration, when the FET turned on, the programming voltage is applied on the top electrode of the RRAM. Then, the RRAM is repeatedly reset/set to HRS/LRS by applying negative/positive voltages on TE ( $V_{\text{TE}}$ ) while grounding the source.<sup>113</sup> The monolayer MoS<sub>2</sub>-FET drives enough current to the RRAM and reliably controls the current compliance during the RRAM set process. Due to the low off-state current of MoS<sub>2</sub>-FET and the robust current control in the 1T1R driving scheme, the MoS<sub>2</sub>-TCAM cells show very large  $R$ -ratios up to  $8.5 \times 10^5$ . These results represent a key application of transistors based on the CVD-grown monolayer MoS<sub>2</sub>, taking advantage of their high performance yet low leakage. MoS<sub>2</sub>-FET is highly promising for data-intensive applications involving high-throughput matching and searching, and the

TCAM array can be potentially integrated into the 3D circuits for energy-efficient computing.

### 4.3 Photodetectors

Owing to the atomic thickness, tunable bandgap, and strong light interaction, the practical application of 2D MoS<sub>2</sub> is attractive in environment-friendly optoelectronic devices, especially in photodetectors. For instance, Zhang *et al.*<sup>120</sup> demonstrated high gain phototransistors based on CVD-grown monolayer MoS<sub>2</sub> with a photoresponsivity up to 2200 A/W under the irradiation of 532 nm laser. Lim *et al.*<sup>121</sup> fabricated MoS<sub>2</sub>-based visible-light photodetector arrays based on top-gated MoS<sub>2</sub>-FETs on a 4-inch SiO<sub>2</sub>/Si wafer with a 1-butyl-3-methylimidazolium (BmimPF<sub>6</sub>) liquid dielectric. As shown in Fig. 14, these 100 devices exhibit a narrow photocurrent distribution (0.05–0.1 nA) at an illumination power of 12.5 mW cm<sup>-2</sup> and a voltage bias of 20 V. Under periodic illumination using a halogen lamp with a tunable power, the photocurrent demonstrated abrupt switching behavior, regardless of the bias voltages. The photocurrent is linearly dependent on the voltage and illumination power due to the increase in the carrier drift velocity and the carrier generation rate, suggesting excellent tunability for multifaceted optoelectronic applications. Liu *et al.*<sup>36</sup> developed MoS<sub>2</sub>/PbS hybrid device arrays based on the CVD-synthesized monolayer MoS<sub>2</sub> and PbS quantum dots. The hybrid devices were obtained by spin-coating PbS quantum dots on the MoS<sub>2</sub>-FET array and exhibited broad spectral photoresponse (457–1064 nm), rapid response rate, and high responsivity of approximately  $1.8 \times 10^4 \text{ A W}^{-1}$ . Kim *et al.*<sup>120</sup> demonstrated phototransistors based on the monolayer MoS<sub>2</sub> film with uniform substitutional doping on the 2-inch wafers. The Nb-doped MoS<sub>2</sub> devices exhibited improved optoelectronic performance and stable electrical properties in ambient

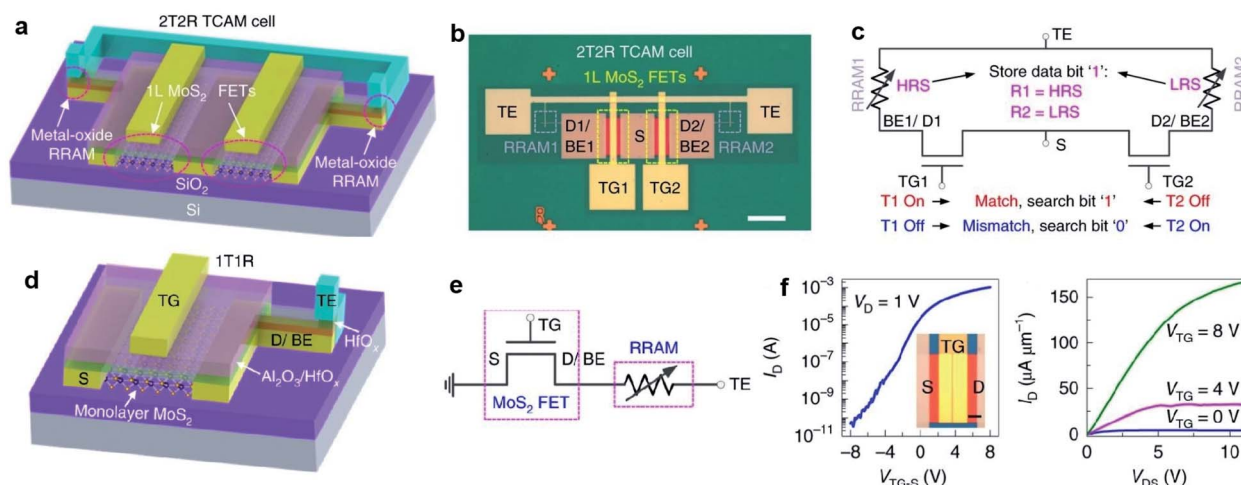
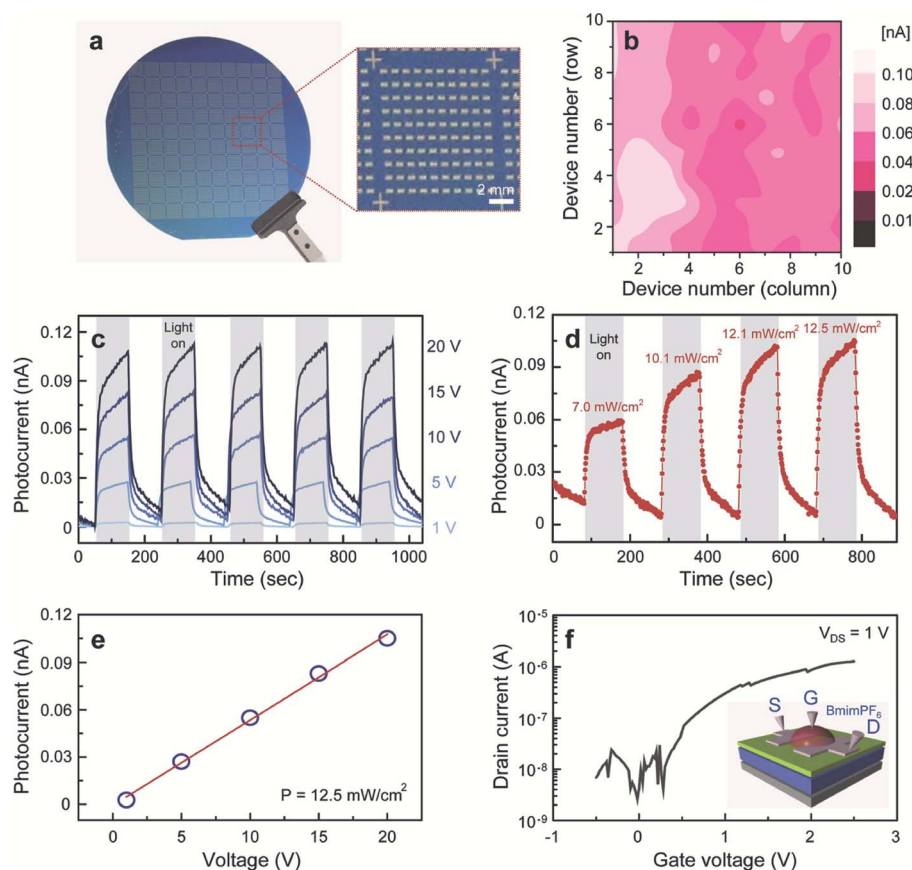


Fig. 13 2T2R TMD-TCAM and 1T1R component with MoS<sub>2</sub>-FET. (a) 3D schematic illustration of the 2T2R TCAM cell, with two MoS<sub>2</sub> FETs and two HfO<sub>x</sub>-based RRAMs. (b) Top-view optical image of the 2T2R TCAM cell. Scale bar: 50  $\mu\text{m}$ . (c) Circuit diagram of the 2T2R TCAM cell showing the definition of match and mismatch states, with the stored data bit '1'. (d) 3D schematic of the 1T1R structure, as a component of the 2T2R TCAM cell. (e) Circuit diagram of the 1T1R structure. Measured representative  $I_d - V_{\text{TG-S}}$  (f) and  $I_d - V_{\text{DS}}$  (g) characteristics of the top-gated monolayer MoS<sub>2</sub>-FET with 25 nm HfO<sub>x</sub> as the gate dielectric, with  $W = 50 \mu\text{m}$ ,  $L = 0.8 \mu\text{m}$ , measured at  $V_{\text{BG}} = 0 \text{ V}$  and with the source grounded.<sup>112</sup> Reproduced with permission from ref. 112, copyright 2019 Springer Nature.





**Fig. 14** (a) A photograph of homogeneous MoS<sub>2</sub>-based visible-light photodetector arrays on a 4-inch SiO<sub>2</sub>/Si wafer. (b) A spatially resolved photocurrent map of the 100 devices recorded at  $P = 12.5 \text{ mW cm}^{-2}$  and  $V = 20 \text{ V}$ . (c) Representative time-resolved photocurrents of the device recorded at  $P = 12.5 \text{ mW cm}^{-2}$  for different bias voltages. (d) Time-dependent photocurrents of the device at  $V = 20 \text{ V}$  for different illumination light powers. (e) A plot of device photocurrents as a function of applied voltage. (f) A typical transfer curve of the electrochemically gate-tuned MoS<sub>2</sub>-FET at  $V_{\text{ds}} = 1 \text{ V}$  and (inset) a schematic illustration of MoS<sub>2</sub>-FET.<sup>121</sup> Reproduced with permission from ref. 121, copyright 2016 John Wiley and Sons.

conditions. The obtained photoresponsivity, detectivity, and response rate were  $5 \times 10^5 \text{ A W}^{-1}$ ,  $5 \times 10^{12}$  Jones, and 5 m s, respectively, suggesting great feasibility of practical applications based on functionalized 2D MoS<sub>2</sub>. Kim *et al.*<sup>123</sup> reported fully printed transparent MoS<sub>2</sub> phototransistor arrays on flexible polyethylene-naphthalate (PEN) substrates. The patterned CVD-synthesized MoS<sub>2</sub> film was transferred onto a PEN substrate, followed by sequentially inkjet-printed poly(3,4-ethylenedioxythiophene) polystyrenesulfonate (PEDOT:PSS) source/drain electrodes, a cross-linked PVP gate dielectric layer, and a PEDOT:PSS top-gate electrode. The printed transparent MoS<sub>2</sub> phototransistors exhibited not only comparable photoresponsivity and photodetectivity over the entire visible range from 400 to 800 nm but also good stability under repetitive bending cycle tests. Furthermore, the performance of MoS<sub>2</sub> photodetectors can be dramatically improved and optimized by forming MoS<sub>2</sub> hybrid heterostructures with graphene, other TMD, *etc.*<sup>124–132</sup> The photoresponsivity, detectivity, and photoresponse of the MoS<sub>2</sub>-based hybrid photodetectors can vary by several orders of magnitude depending on the nature of the heterostructures, doping situation, wavelengths, and intensity

of the applied incident power. The flexible photodetectors developed from MoS<sub>2</sub> and MoS<sub>2</sub>-based hybrid heterostructures provide great potential for the future application in integrated nano-optoelectronic systems and wearable devices.

## 5. Conclusion and outlook

This review focused on the recent advances in the wafer-scale monolayer MoS<sub>2</sub> synthesis and 2D MoS<sub>2</sub>-FET for practical application in electronics and optoelectronics. Wafer-scale monolayer MoS<sub>2</sub> have been realized by different methods, including Au-assisted exfoliation, CVD, thin film sulfurization, MOCVD, VLS method, ALD, and the thermolysis of thiosalts. However, these synthetic methods show different advantages and shortcomings in MoS<sub>2</sub> productions and related costs. Au-assisted exfoliation is convenient in laboratory research, but the repetition rate and size uniformity are difficult to control. CVD is relatively low-cost and possible to mass produce for wide applications, although the growth rate and repetition rate should be improved. The thin film sulfurization method is low-cost but leaves behind some problems, such as difficulty in



controlling the thickness of Mo and the MoO<sub>x</sub> layer. MOCVD exhibits great advantages in producing high quality MoS<sub>2</sub> monolayers with high repetition rate, but the long production cycle and special production conditions lead to the high cost. The VLS method seems low-cost in wafer-scale MoS<sub>2</sub> monolayers syntheses, but it is still at the earlier stages of research. ALD can realize wafer-scale MoS<sub>2</sub> monolayers with high repetition rate and good uniformity but in complex production processes with high cost. Thermolysis of thiosalts based on the thermal decomposition of thiosalts results in low cost, but the thickness is difficult to control, leading to low repetition rate for MoS<sub>2</sub> synthesis. Based on the overall consideration of above synthetic methods, CVD and MOCVD present obvious advantages in the synthesis of wafer-scale MoS<sub>2</sub> monolayers with large quantities. Even though there is considerable room for improvement in monolayer MoS<sub>2</sub> synthesis, more and more efforts are being made to optimize the growth conditions and reduce the costs. Thus, wafer-scale high-quality MoS<sub>2</sub> monolayers could be obtained in the near future with the desired thickness, good uniformity, large grain size, and less defects.

The 2D MoS<sub>2</sub>-FET array with different configurations utilizes high-quality MoS<sub>2</sub> as the channel and exhibits favorable performance. The MoS<sub>2</sub>-FET fabricated from the wafer-scale monolayer MoS<sub>2</sub> demonstrates a mobility of several tens and an on/off ratio even up to 10<sup>10</sup>, demonstrating great potential in practical applications based on basic MoS<sub>2</sub>-FET for modern integrated electronics and flexible optoelectronics, such as logic circuits, memory devices, and photodetectors. Although significant progress has been made in research laboratories for monolayer MoS<sub>2</sub> synthesis and MoS<sub>2</sub>-FET devices, the mass production of wafer-scale and high-quality 2D MoS<sub>2</sub>-FET is still challenging. In the future, more new investigations are needed to fulfill the usage demands of fundamental studies and practical applications, especially different circuit-level applications. The repeatability of wafer-scale uniform MoS<sub>2</sub> synthesis should be improved for device applications. Functionalization and strain engineering based on wafer-scale monolayer MoS<sub>2</sub> are needed to be considered for the improvement of carrier mobility and PL quantum yields. The precise control of MoS<sub>2</sub> transfer and MoS<sub>2</sub>-channel patterning is required for integrated devices fabrication. Further study on the effect of photolithography and the lift-off process on monolayer MoS<sub>2</sub> is also necessary for the performance improvement in basic MoS<sub>2</sub>-FET. Looking forward, with more comprehensive advancement in both fundamental research and practical application, 2D MoS<sub>2</sub> film and MoS<sub>2</sub>-FET will demonstrate great potential and prospect in realizing MoS<sub>2</sub>-based integrated electronics and flexible optoelectronics for modern applications.

## Conflicts of interest

There are no conflicts to declare.

## Acknowledgements

The work was supported by the National Natural Science Foundation of China (NSFC, 62075131), China Postdoctoral

Science Foundation (2020M671168) and the Shanghai Rising-Star Program (18QA1403200).

## References

- 1 S. Manzeli, D. Ovchinnikov, D. Pasquier, O. V. Yazyev and A. Kis, *Nat. Rev. Mater.*, 2017, 2, 17033.
- 2 J. Zhou, J. Lin, X. Huang, Y. Zhou, Y. Chen, J. Xia, H. Wang, Y. Xie, H. Yu, J. Lei, D. Wu, F. Liu, Q. Fu, Q. Zeng, C. Hsu, C. Yang, L. Lu, T. Yu, Z. Shen, H. Lin, B. I. Yakobson, Q. Liu, K. Suenaga, G. Liu and Z. Liu, *Nature*, 2018, 556, 355–359.
- 3 Z. Lin, Y. Huang and X. Duan, *Nat. Electron.*, 2019, 2, 378–388.
- 4 G. R. Bhimanapati, Z. Lin, V. Meunier, Y. Jung, J. Cha, S. Das, D. Xiao, Y. Son, M. S. Strano, V. R. Cooper, L. Liang, S. G. Louie, E. Ringe, W. Zhou, S. S. Kim, R. R. Naik, B. G. Sumpter, H. Terrones, F. Xia, Y. Wang, J. Zhu, D. Akinwande, N. Alem, J. A. Schuller, R. E. Schaak, M. Terrones and J. A. Robinson, *ACS Nano*, 2015, 9, 11509–11539.
- 5 K. F. Mak, C. Lee, J. Hone, J. Shan and T. F. Heinz, *Phys. Rev. Lett.*, 2010, 105, 136805.
- 6 S. Zeng, Z. Tang, C. Liu and P. Zhou, *Nano Res.*, 2020, DOI: 10.1007/s12274-020-2945-z.
- 7 L. Yu, E. Damak, D. Radhakrishna, U. Ling, X. Zubair, A. Lin, Y. Zhang, Y. Chuang, M.-H. Lee, Y.-H. Antoniadis, D. Kong, J. Chandrakasan, A. Palacios and T. Design, *Nano Lett.*, 2016, 16, 6349–6356.
- 8 L. Wang, L. Chen, S. L. Wong, X. Huang, W. Liao, C. Zhu, Y. Lim, D. Li, X. Liu, D. Chi and K. Ang, *Adv. Electron. Mater.*, 2019, 5, 1900393.
- 9 C. Liu, H. Chen, X. Hou, H. Zhang, J. Han, Y.-G. Jiang, X. Zeng, D. W. Zhang and P. Zhou, *Nat. Nanotechnol.*, 2019, 14, 662–667.
- 10 Z. Lin, Y. Liu, U. Halim, M. Ding, Y. Liu, Y. Wang, C. Jia, P. Chen, X. Duan, C. Wang, F. Song, M. Li, C. Wan, Y. Huang and X. Duan, *Nature*, 2018, 562, 254–258.
- 11 H. Wang, C. Li, P. Fang, Z. Zhang and J. Z. Zhang, *Chem. Soc. Rev.*, 2018, 47, 6101–6127.
- 12 W. Liao, S. Zhao, F. Li, C. Wang, Y. Ge, H. Wang, S. Wang and H. Zhang, *Nanoscale Horiz.*, 2020, 5, 787–807.
- 13 N. Li, Q. Wang, C. Shen, Z. Wei, H. Yu, J. Zhao, X. Lu, G. Wang, C. He, L. Xie, J. Zhu, L. Du, R. Yang, D. Shi and G. Zhang, *Nanoscale Horiz.*, 2020, 3, 711–717.
- 14 Y. Wang, J. C. Kim, R. J. Wu, J. Martinez, X. Song, J. Yang, F. Zhao, A. Mkhoyan, H. Y. Jeong and M. Chhowalla, *Nature*, 2019, 568, 70–74.
- 15 J. Sun, X. Li, W. Guo, M. Zhao, X. Fan, Y. Dong, C. Xu, J. Deng and Y. Fu, *Crystals*, 2017, 7, 1–11.
- 16 H. Li, Y. Li, A. Aljarb, Y. Shi and L. J. Li, *Chem. Rev.*, 2018, 118, 6134–6150.
- 17 J. Wang, T. Li, Q. Wang, W. Wang, R. Shi, N. Wang, A. Amini and C. Cheng, *Mater. Today Adv.*, 2020, 8, 100098.
- 18 T. Kim, J. Mun, H. Park, D. Joung, M. Diware, C. Won, J. Park, S. Jeong and S. Kang, *Nanotechnology*, 2017, 28, 18LT01.



- 19 N. B. Shinde, B. Francis, M. S. R. Rao, B. D. Ryu and S. K. Eswaran, *APL Mater.*, 2019, 7, 081113.
- 20 C. Yoo, M. G. Kaium, L. Hurtado, H. Li, S. Rassay, J. Ma, T. Ko, S. S. Han, M. S. Shawkat, K. H. Oh, H. Chung and Y. Jung, *ACS Appl. Mater. Interfaces*, 2020, 12, 25200–25210.
- 21 J. Mun, H. Park, J. Park, D. Joung, S.-K. Lee, J. Leem, J.-M. Myoung, J. Park, S.-H. Jeong, W. Chegal, S. W. Nam and S.-W. Kang, *ACS Appl. Electron. Mater.*, 2019, 1, 608–616.
- 22 Z. Cai, B. Liu, X. Zou and H. M. Cheng, *Chem. Rev.*, 2018, 118, 6091–6133.
- 23 X. Xu, G. Das, X. He, M. N. Hedhili, E. D. Fabrizio, X. Zhang and H. N. Alshareef, *Adv. Funct. Mater.*, 2019, 29, 1901070.
- 24 P. Yang, X. Zou, Z. Zhang, M. Hong, J. Shi, S. Chen, J. Shu, L. Zhao, S. Jiang, X. Zhou, Y. Huan, C. Xie, P. Gao, Q. Chen, Q. Zhang, Z. Liu and Y. Zhang, *Nat. Commun.*, 2018, 9, 979.
- 25 J. Shim, S. H. Bae, W. Kong, D. Lee, K. Qiao, D. Nezich, Y. J. Park, R. Zhao, S. Sundaram, X. Li, H. Yeon, C. Choi, H. Kum, R. Yue, G. Zhou, Y. Ou, K. Lee, J. Moodera, X. Zhao, J. H. Ahn, C. Hinkle, A. Ougazzaden and J. Kim, *Science*, 2018, 362, 665–670.
- 26 G. Magda, J. Petó, G. Dobrik, C. Hwang, L. P. Biró and L. Tapasztó, *Sci. Rep.*, 2015, 5, 14714.
- 27 S. B. Desai, S. R. Madhvapathy, M. Amani, D. Kiriya, M. Hettick, M. Tosun, Y. Zhou, M. Dubey, J. W. Ager, D. Chrzan and A. Javey, *Adv. Mater.*, 2016, 28, 4053–4058.
- 28 M. Velický, G. E. Donnelly, W. R. Hendren, S. McFarland, D. Scullion, W. J. I. DeBenedetti, G. C. Correa, Y. Han, A. J. Wain, M. A. Hines, D. A. Muller, K. S. Novoselov, H. D. Abruña, R. M. Bowman, E. J. G. Santos and F. Huang, *ACS Nano*, 2018, 12, 10463–10472.
- 29 F. Liu, W. Wu, Y. Bai, S. H. Chae, Q. Li, J. Wang, J. Hone and X. Y. Zhu, *Science*, 2020, 367, 903–906.
- 30 Y. Huang, Y. Pan, R. Yang, L. Bao, L. Meng, H. Luo, Y. Cai, G. Liu, W. Zhao, Z. Zhou, L. Wu, Z. Zhu, M. Huang, L. Liu, L. Liu, P. Cheng, K. Wu, S. Tian, C. Gu, Y. Shi, Y. Guo, Z. Cheng, J. Hu, L. Zhao, E. Sutter, P. Sutter, Y. Wang, W. Ji, X. Zhou, H. Gao, X. Zhou and H. Gao, *Nat. Commun.*, 2020, 11, 2453.
- 31 H. Yu, M. Liao, W. Zhao, G. Liu, X. J. Zhou, Z. Wei, X. Xu, K. Liu, Z. Hu, K. Deng, S. Zhou, J. Shi, L. Gu, C. Shen, T. Zhang, L. Du, L. Xie, J. Zhu, W. Chen, R. Yang, D. Shi and G. Zhang, *ACS Nano*, 2017, 11, 12001–12007.
- 32 H. Xu, H. Zhang, Z. Guo, Y. Shan, S. Wu, J. Wang, W. Hu, H. Liu, Z. Sun, C. Luo, X. Wu, Z. Xu, D. Zhang, W. Bao and P. Zhou, *Small*, 2018, 14, 1803465.
- 33 Q. Wang, N. Li, J. Tang, J. Zhu, Q. Zhang, Q. Jia, Y. Lu, Z. Wei, H. Yu, Y. Zhao, Y. Guo, L. Gu, G. Sun, W. Yang, R. Yang, D. Shi and G. Zhang, *Nano Lett.*, 2020, 20, 7193–7719.
- 34 T. He, Y. Li, Z. Zhou, C. Zeng, L. Qiao, C. Lan, Y. Yin, C. Li and Y. Liu, *2D Mater.*, 2019, 6, 025030.
- 35 S. Durairaj, P. Krishnamoorthy, N. Raveendran, B. Ryu, C. Hong, T. H. Seoc and S. Chandramohan, *Nanoscale Adv.*, 2020, 2, 4106–4116.
- 36 L. Liu, K. Ye, Z. Yu, Z. Jia, J. Xiang, A. Nie, F. Wen, C. Mu, B. Wang, Y. Li, Y. Gong and Z. Liu, *2D Mater.*, 2020, 7, 025020.
- 37 P. Yang, S. Zhang, S. Pan, B. Tang, Y. Liang, X. Zhao, Z. Zhang, J. Shi, Y. Huan, Y. Shi, S. J. Pennycook, Z. Ren, G. Zhang, Q. Chen, X. Zou, Z. Liu and Y. Zhang, *ACS Nano*, 2020, 14, 5036–5045.
- 38 S. Tong, H. Medina, W. Liao, J. Wu, W. Wu, J. Chai, M. Yang, A. Abutaha, S. Wang, C. Zhu, K. Hippalgaonkar and D. Chi, *ACS Appl. Mater. Interfaces*, 2019, 11, 14239–14248.
- 39 P. Sun, Y. Liu, J. Ma, W. Li, K. Zhang and Y. Yuan, *CrystEngComm*, 2019, 21, 6969–6977.
- 40 Y. Lim, K. Priyadarshi, F. Bussolotti, P. K. Gogoi, X. Cui, M. Yang, J. Pan, S. W. Tong, S. Wang, S. J. Pennycook, K. E. J. Goh, A. T. S. Wee, S. L. Wong and D. Chi, *ACS Nano*, 2018, 12, 1339–1349.
- 41 G. Li, X. Wang, B. Han, W. Zhang, S. Qi, Y. Zhang, J. Qiu, P. Gao, S. Guo, R. Long, L. Tan, X. Song and N. Liu, *J. Phys. Chem. Lett.*, 2020, 11, 1570–1577.
- 42 F. Liao, J. Yu, Z. Gu, Z. Yang, T. Hasan, S. Linghu, J. Peng, W. Fang, S. Zhuang, M. Gu and F. Gu, *Sci. Adv.*, 2019, 5, eaax7398.
- 43 F. Gu, L. Zhang, Y. Zhu and H. Zeng, *Laser Photonics Rev.*, 2015, 9, 682.
- 44 F. Gu, F. Xie, X. Lin, S. Linghu, W. Fang, H. Zeng, L. Tong and S. Zhuang, *Light: Sci. Appl.*, 2017, 6, e17061.
- 45 J. H. Kim, T. Ko, E. Okogbue, S. S. Han, M. S. Shawkat, M. G. Kaium, K. H. Oh, H. Chung and Y. Jung, *Sci. Rep.*, 2019, 9, 1641.
- 46 S. Jo, Y. Li, A. Singh, A. Kumar, S. Frisone, J. M. LeBeau and R. Jaramillo, *J. Vac. Sci. Technol., A*, 2020, 38, 013405.
- 47 H. Park, N. Liu, B. H. Kim, S. H. Kwon, S. Baek, S. Kim, H. Lee, Y. J. Yoon and S. Kim, *ACS Appl. Mater. Interfaces*, 2020, 12, 20645–20652.
- 48 K. Almeida, M. Wurch, A. Geremew, K. Yamaguchi, T. A. Empante, M. D. Valentin, M. Gomez, A. J. Berges, G. Stecklein, S. Rumyantsev, J. Martinez, A. A. Balandin and L. Bartels, *ACS Appl. Mater. Interfaces*, 2018, 10, 33457–33463.
- 49 H. Choi, Y. Jung, S. Lee, S. Kang, D. Seo, H. Kim, H. Choi, G. Lee and Y. Cho, *Cryst. Growth Des.*, 2020, 20, 2698–2705.
- 50 X. Xu, Z. Wang, S. Lopatin, M. A. Quevedo-Lopez and H. N. Alshareef, *2D Mater.*, 2019, 6, 015030.
- 51 X. Xu, C. Zhang, M. K. Hota, Z. Liu, X. Zhang and H. N. Alshareef, *Adv. Funct. Mater.*, 2020, 30, 1908040.
- 52 M. Shi, L. Chen, T. Zhang, J. Xu, H. Zhu, Q. Sun and D. Zhang, *Small*, 2017, 13, 16031571.
- 53 B. Kalanyan, W. A. Kimes, R. Beams, S. J. Stranick, E. Garratt, I. Kalish, A. V. Davydov, R. K. Kanjolia and J. E. Maslar, *Chem. Mater.*, 2017, 29, 6279–6288.
- 54 M. B. Shinde, B. Francis, M. S. R. Rao, B. D. Ryu, S. Chandramohan and S. K. Eswara, *APL Mater.*, 2019, 7, 081113.
- 55 N. B. Shinde, B. D. Ryu, K. Meganathan, B. Francis, C. Hong, S. Chandramohan and S. K. Eswaran, *ACS Appl. Nano Mater.*, 2020, 3, 7371–7376.
- 56 H. Cun, M. Macha, H. Kim, K. Liu, Y. Zhao, T. L. Grange, A. Kis and A. Radenovic, *Nano Res.*, 2019, 12, 2646–2652.
- 57 M. Seol, Mi. Lee, H. Kim, K. W. Shin, Y. Cho, I. Jeon, M. Jeong, H. Lee, J. Park and H. Shin, *Adv. Mater.*, 2020, 32, e2003542.



- 58 S. Li, Y.-C. Lin, W. Zhao, J. Wu, Z. Wang, Z. Hu, Y. Shen, D.-M. Tang, J. Wang and Q. Zhang, *Nat. Mater.*, 2018, **17**, 535–542.
- 59 S. Li, Y. Lin, T. Taniguchi and M. Osada, *Nanoscale*, 2019, **11**, 16122–16129.
- 60 M. Chang, P. Ho, M. Tseng, F. Lin, C. Hou, I. Lin, H. Wang, P. Huang, C. Chiang, Y. Yang, I. Wang, H. Du, C. Wen, J. Shyue, C. Chen, K. Chen, P. Chiu and L. Chen, *Nat. Commun.*, 2020, **11**, 3682.
- 61 Y. Kim, J.-G. Song, Y. J. Park, G. H. Ryu, S. J. Lee, J. S. Kim, P. J. Jeon, C. W. Lee, W. J. Woo, T. Choi, H. Jung, H. Lee, J.-M. Myoung, S. Im, Z. Lee, J.-H. Ahn, J. Park and H. Kima, *Sci. Rep.*, 2016, **6**, 18754.
- 62 Y. Huang, L. Liu, W. Zhao and Y. Chen, *Thin Solid Films*, 2017, **624**, 101–105.
- 63 A. U. Mane, S. Letourneau, D. J. Mandia, J. Liu, J. A. Libera, Y. Lei, Q. Peng, E. Graugnard and J. W. Elam, *J. Vac. Sci. Technol., A*, 2018, **36**, 01A125.
- 64 J. Cai, X. Han, X. Wang and X. Meng, *Matter*, 2020, **2**, 587–630.
- 65 Y. Jang, S. Yeoc, H.-B.-R. Lee, H. Kim and S.-H. Kim, *Appl. Surf. Sci.*, 2016, **365**, 160–165.
- 66 J. Pyeon, S. H. Kim, D. S. Jeong, S.-H. Baek, C.-Y. Kang, J.-S. Kima and Se. K. Kim, *Nanoscale*, 2016, **8**, 10792–10798.
- 67 T. Jurca, M. J. Moody, A. Henning, J. D. Emery, B. Wang, J. M. Tan, T. L. Lohr, L. J. Lauhon and T. J. Marks, *Angew. Chem., Int. Ed.*, 2017, **56**, 4991–4995.
- 68 H. Liu, L. Chen, H. Zhu, Q. Sun, S. Ding, P. Zhou and D. W. Zhang, *Nano Res.*, 2020, **13**, 1644–1650.
- 69 R. Ionescu, B. Campbell, R. Wu, E. Aytan, A. Patalano, I. Ruiz, S. W. Howell, A. E. McDonald, T. E. Beechem, K. A. Mkhoyan, M. Ozkan and C. S. Ozkan, *Sci. Rep.*, 2017, **7**, 6419.
- 70 S. M. Islam, J. D. Cain, F. Shi, Y. He, L. Peng, A. Banerjee, K. S. Subrahmanyam, Y. Li, S. Ma, V. P. Dravid, M. Grayson and M. G. Kanatzidis, *Chem. Mater.*, 2018, **30**, 3847–3853.
- 71 Y. R. Lim, J. K. Han, S. K. Kim, Y. B. Lee, Y. Yoon, S. J. Kim, B. K. Min, Y. Kim, C. Jeon, S. Won, J. -H. Kim, W. Song, S. Myung, S. S. Lee, K. -S. An and J. Lim, *Adv. Mater.*, 2018, **30**, 1705270.
- 72 S. Park, A. Lee, K. Choi, S. Hyeong, S. Bae, J. Hong, T. Kim, B. H. Hong and S. Lee, *ACS Nano*, 2020, **14**, 8485–8494.
- 73 X. Jing, Y. Illarionov, E. Yalon, P. Zhou, T. Grasser, Y. Shi and M. Lanza, *Adv. Funct. Mater.*, 2020, **30**, 1901971.
- 74 N. D. Bharathi and K. Sivasankaran, *J. Semicond.*, 2018, **39**, 104002.
- 75 Y. Kim, A. Kim, G. Zhao, S. Choi, S. Kang, S. Lim, K. Lee, J. Park, B. Lee, M. Hahm, D. Kim, J. Yun, K. Lee and B. Cho, *ACS Appl. Mater. Interfaces*, 2017, **9**, 37146–37153.
- 76 H. Zhang, X. Guo, W. Niu, H. Xu, Q. Wu, F. Liao, J. Chen, H. Tang, H. Liu, Z. N. Xu, Z. Sun, Z. Qiu, Y. Pu and W. Bao, *2D Mater.*, 2020, **7**, 025019.
- 77 X. Liu, K. Huang, M. Zhao, F. Li and H. Liu, *Nanotechnology*, 2020, **31**, 055707.
- 78 X. Liu, Y. Chai and Z. Liu, *Nanotechnology*, 2017, **28**, 164004.
- 79 L. Liu, X. Wang, L. Han, B. Tian, Y. Chen, G. Wu, D. Li, M. Yan, T. Wang, S. Sun, H. Shen, T. Lin, J. Sun, C. Duan, J. Wang, X. Meng and J. Chu, *AIP Adv.*, 2017, **7**, 065121.
- 80 Y. Zhu, Y. Li, G. Arefe, R. A. Burke, C. Tan, Y. Hao, X. Liu, X. Liu, W. Yoo, M. Dubey, Q. Lin and J. C. Hone, *Nano Lett.*, 2018, **18**, 3807–3813.
- 81 Y. Illarionov, Ar G. Banshchikov, D. K. Polyushkin, S. Wachter, T. Knobloch, M. Thesberg, M. Vexler, M. Walzl, M. Lanza, N. S. Sokolov, T. Mueller and T. Grasser, *2D Mater.*, 2019, **6**, 045004.
- 82 I. Lee, J. N. Kim, W. T. Kang, Y. S. Shin, B. H. Lee and W. J. Yu, *ACS Appl. Mater. Interfaces*, 2020, **12**, 2854–2861.
- 83 X. Zou, L. Liu, J. G. Xu, H. Wang and W. Tang, *ACS Appl. Mater. Interfaces*, 2020, **12**, 32943–32950.
- 84 M. A. Rodder, S. Vasishtha and A. Dodabalapur, *ACS Appl. Mater. Interfaces*, 2020, **12**, 33926–33933.
- 85 X. Cui, E. -M. Shih, L. A. Jauregui, S. H. Chae, Y. D. Kim, B. Li, D. Seo, K. Pistunova, J. Yin, J. -H. Park, H. -J. Choi, Y. H. Lee, K. Watanabe, T. Taniguchi, P. Kim, C. R. Dean and J. C. Hone, *Nano Lett.*, 2017, **17**, 4781.
- 86 J. Jiang, Y. Zhang, A. Wang, J. Duan, H. Ji, J. Pang, Y. Sang, X. Feng, H. Liu and L. Han, *ACS Appl. Electron. Mater.*, 2020, **2**, 2132–2140.
- 87 J. Wei, S. Yu, X. Shan, K. Lan, X. Yang, K. Zhang and G. Qin, *ACS Appl. Mater. Interfaces*, 2020, **12**, 38306–38313.
- 88 Y. Lan, P. Chen, Y. Lin, M. Li, L. Li, Y. Tu, F. Yang, M. Chen and K. Li, *Nanoscale Horiz.*, 2019, **4**, 683–688.
- 89 D. H. Zhao, Z. L. Tian, H. Liu, Z. H. Gu, H. Zhu, L. Chen, Q. Q. Sun and D. W. Zhang, *ACS Appl. Mater. Interfaces*, 2020, **12**, 14308–14314.
- 90 Z. Hu, Z. Wu, C. Han, J. He, Z. Ni and W. Chen, *Chem. Soc. Rev.*, 2018, **47**, 3100–3128.
- 91 D. S. Schulman, A. J. Arnold and S. Das, *Chem. Soc. Rev.*, 2018, **47**, 3037–3058.
- 92 K. Andrews, A. Bowman, U. Rijal, P. Chen and Z. Zhou, *ACS Nano*, 2020, **14**, 6232–6241.
- 93 X. Cui, E. Shih, L. A. Jauregui, S. Chae, Y. Kim, B. Li, D. Seo, K. Pistunova, J. Yin, J. Park, H. Choi, Y. Lee, K. Watanabe, T. Taniguchi, P. Kim, C. R. Dean and J. C. Hone, *Nano Lett.*, 2017, **17**, 4781–47864.
- 94 S. Chen, S. Kim, W. Chen, J. Yuan, R. Bashir, J. Lou, A. M. Zande and W. P. King, *Nano Lett.*, 2019, **19**, 2092–2098.
- 95 M. S. M. Saifullah, M. Asbahi, M. B.-K. Kiyani, S. S. Liow, S. B. Dolmanan, A. M. Yong, E. A. H. Ong, A. I. Saifullah, H. R. Tan, N. Dwivedi, T. Dutta, R. Ganesan, S. Valiyaveetil, K. S. L. Chon and S. Tripathy, *ACS Appl. Mater. Interfaces*, 2020, **12**, 116772–116781.
- 96 S. Chee and M. Ham, *Adv. Mater. Interfaces*, 2020, **7**, 2000762.
- 97 Y. Wang, X. Bai, J. Chu, H. Wang, G. Rao, X. Pan, X. Du, K. Hu, X. Wang, C. Gong, C. Yin, C. Yang, C. Yan, C. Wu, Y. Shuai, X. Wang, M. Liao and J. Xiong, *Adv. Mater.*, 2020, **32**, 2005353.
- 98 G. H. Shin, G. Lee, E. An, C. Park, H. J. Jin, K. J. Lee, D. S. Oh, J. S. Kim, Y. Choi and S. Choi, *ACS Appl. Mater. Interfaces*, 2020, **12**, 5106–5112.
- 99 S. Zhang, H. Xu, F. Liao, Y. Sun, K. Ba, Z. Sun, Z. Qiu, Z. Xu, H. Zhu, L. Chen, Q. Sun, P. Zhou, W. Bao and D. W. Zhang, *Nanotechnology*, 2019, **30**, 174002.



- 100 F. Liao, Z. Guo, Y. Wang, Y. Xie, S. Zhang, Y. Sheng, H. Tang, Z. Xu, A. Riaud, P. Zhou, J. Wan, M. S. Fuhrer, X. Jiang, D. W. Zhang, Y. Chai, Y. Chai and W. Bao, *ACS Appl. Electron. Mater.*, 2020, **2**, 111–119.
- 101 L. Bao, J. Zhu, Z. Yu, R. Jia, Q. Cai, Z. Wang, L. Xu, Y. Wu, Y. Yang, Y. Cai and R. Huang, *ACS Appl. Mater. Interfaces*, 2019, **11**, 41482–41489.
- 102 S. Yang, S. Jang, D. Choi, S. D. Namgung, H.-J. Kim and J.-Y. Kwon, *Phys. Status Solidi RRL*, 2019, **13**, 1900142.
- 103 J. Du, C. Ge, H. Riahi, E. Guo, M. He, C. Wang, G. Yang and K. Jin, *Adv. Electron. Mater.*, 2020, **6**, 1901408.
- 104 Z. Liu, P. Wang, Y. Wang, Y. Huang and X. Duan, *Nano Res.*, 2020, **13**, 1943–1947.
- 105 P. Prasad, M. Garga and U. Chandni, *Nanoscale*, 2020, **12**, 23817–23823.
- 106 S. S. Chee, J. H. Lee, K. Lee and M. H. Ham, *ACS Appl. Mater. Interfaces*, 2020, **12**, 4129–4134.
- 107 L. Xie, M. Liao, S. Wang, H. Yu, L. Du, J. Tang, J. Zhao, J. Zhang, P. Chen, X. Lu, G. Wang, G. Xie, R. Yang, D. Shi and G. Zhang, *Adv. Mater.*, 2017, **29**, 1702522.
- 108 Y. Liu, J. Guo, E. Zhu, L. Liao, S.-J. Lee, M. Ding, I. Shakir, V. Gambin, Y. Huang and X. Duan, *Nature*, 2018, **557**, 696–700.
- 109 T. B. Zhang, H. Liu, Y. Wang, H. Zhu, L. Chen, Q. Sun and D. W. Zhang, *Phys. Status Solidi RRL*, 2019, **13**, 1900018.
- 110 S. S. Chee, H. Jang, K. Lee and M.-H. Ham, *ACS Appl. Mater. Interfaces*, 2020, **12**, 31804–31809.
- 111 S. Wachter, D. K. Polyushkin, O. Bethge and T. Mueller, *Nat. Commun.*, 2017, **8**, 14948.
- 112 R. Yang, H. Li, K. K. Smithe, T. R. Kim, K. Okabe, E. Pop, J. A. Fan and H.-S. P. Wong, *Nat. Electron.*, 2019, **2**, 108–114.
- 113 R. Yang, H. Li, K. K. H. Smithe, T. R. Kim, K. Okabe, E. Pop, J. A. Fan and H.-S. P. Wong, *IEEE Int. Electron Devices Meeting (IEDM)*, 2017, DOI: 10.1109/IEDM.2017.8268423.
- 114 Z. H. Zhang, Z. W. Wang, T. Shi, C. Bi, F. Rao, Y. M. Cai, Q. Liu, H. Q. Wu and P. Zhou, *InfoMat*, 2020, **2**, 261–290.
- 115 S. C. Yang, J. Choi, B. C. Jang, W. Hong, G. W. Shim, S. Y. Yang, S. G. Im and S. -Y. Choi, *Adv. Electron. Mater.*, 2019, **5**, 1800688.
- 116 J. Tang, Z. Wei, Q. Wang, Y. Wang, B. Han, X. Li, B. Huang, M. Liao, J. Liu, N. Li, Y. Zhao, C. Shen, Y. Guo, X. Bai, P. Gao, W. Yang, L. Chen, K. Wu, R. Yan, D. Shi and G. Zhang, *Small*, 2020, **16**, e2004276.
- 117 X. Wang, H. Tian, H. Zhao, T. Zhang, W. Mao, Y. Qiao, Y. Pang, Y. Li, Y. Yang and T. Ren, *Small*, 2018, **14**, 1702525.
- 118 S. Conti, L. Pimpolari, G. Calabrese, R. Worsley, S. Majee, D. K. Polyushkin, M. Paur, S. Pace, D. H. Keum, F. Fabbri, G. Iannaccone, M. Macucci, C. Coletti, T. Mueller, C. Casiraghi and G. Fiori, *Nat. Commun.*, 2020, **11**, 3566.
- 119 H. S. Nalwa, *RSC Adv.*, 2020, **10**, 30529–30602.
- 120 W. Zhang, J. K. Huang, C. H. Chen, Y. H. Chang, Y. J. Cheng and L. J. Li, *Adv. Mater.*, 2013, **25**, 3456–3461.
- 121 Y. R. Lim, W. Song, J. K. Han, Y. B. Lee, S. J. Kim, S. Myung, S. S. Lee, K. S. An, C. J. Choi and J. Lim, *Adv. Mater.*, 2016, **28**, 5025–5030.
- 122 Y. Kim, Y. Kim, H. Bark, B. Kang and C. Lee, *ACS Appl. Mater. Interfaces*, 2019, **11**, 12613–12621.
- 123 T. Y. Kim, J. Ha, K. Cho, J. Pak, J. Seo, J. Park, J.-K. Kim, S. Chung, Y. Hong and T. Lee, *ACS Nano*, 2017, **11**, 10273–10280.
- 124 Y. Yang, N. Huo and J. Li, *J. Mater. Chem. C*, 2017, **5**, 11614–11619.
- 125 F. Li, T. Shen, L. Xu, C. Hu and J. Qi, *Adv. Electron. Mater.*, 2019, **5**, 1900803.
- 126 T. Dong, J. Simões and Z. Yang, *Adv. Mater. Interfaces*, 2020, **7**, 1901657.
- 127 Z. He, J. Guo, S. Li, Z. Lei, L. Lin, Y. Ke, W. Jie, T. Gong, Y. Lin, T. Cheng, W. Huang and X. Zhang, *Adv. Mater. Interfaces*, 2020, **7**, 2070050.
- 128 C. Gao, Y. Han, K. Zhang, T. Wei, Z. Jiang, Y. Wei, L. Yin, F. Piccinelli, C. Yao, X. Xie, M. Bettinelli and L. Huang, *Adv. Sci.*, 2020, **7**, 2002444.
- 129 K. Ye, L. Liu, J. Huang, A. Nie, K. Zhai, B. Wang, F. Wen, C. Mu, Z. Zhao, Y. Gong, J. Xiang, Y. Tian and Z. Liu, *Adv. Electron. Mater.*, 2020, **8**, 202000168.
- 130 Y. Cheng, H. Li, B. Liu, L. Jiang, M. Liu, H. Huang, J. Yang, J. He and J. Jiang, *Small*, 2020, **16**, 202070244.
- 131 H. Wang, C. Li, P. Fang, Z. Zhang and J. Z. Zhang, *Chem. Soc. Rev.*, 2018, **47**, 6101–6127.
- 132 S. Shi, Z. Sun and Y. H. Hu, *J. Mater. Chem. A*, 2018, **6**, 23932–23977.
- 133 Q. Zhao, Z. Xie, Y. P. Peng, K. Wang, H. Wang, X. Li, H. Wang, J. Chen, H. Zhang and X. Yan, *Mater. Horiz.*, 2020, **7**, 1495–1518.
- 134 P. Das, J. Nash, M. Webb, R. Burns, V. N. Mapara, G. Ghimire, D. Rosenmann, R. Divan, D. Karaikaj, S. A. McGill, A. V. Sumant, Q. Dai, P. C. Ray, B. Tawade, D. Raghavan, A. Karim and N. R. Pradhan, *Nanoscale*, 2020, **12**, 22904–22916.
- 135 C. Lan, Z. Shi, R. Cao, C. Li and H. Zhang, *Nanoscale*, 2020, **12**, 11784–11807.
- 136 G. Wu, X. Wang, Y. Chen, Z. Wang, H. Shen, T. Lin, W. Hu, J. Wang, S. Zhang, X. Meng and J. Chu, *Nanotechnology*, 2018, **29**, 485204.
- 137 K. Zhang, M. Peng, A. Yu, Y. Fan, J. Zhai and Z. L. Wang, *Mater. Horiz.*, 2019, **6**, 826–833.
- 138 H. Ying, X. Li, H. Wang, Y. Wang, X. Hu, J. Zhang, X. Zhang, Y. Shi, M. Xu and Q. Zhang, *Adv. Opt. Mater.*, 2020, **8**, 2000430.
- 139 S. S. Chee, W. J. Lee, Y. R. Jo, M. K. Cho, D. W. Chun, H. Baik, B. -J. Kim, M. -H. Yoon, K. Lee and M. -H. Ham, *Adv. Funct. Mater.*, 2020, **30**, 1908147.
- 140 H. Tang, H. Zhang, X. Chen, Y. Wang, X. Zhang, P. Cai and W. Bao, *Sci. China Inf. Sci.*, 2019, **62**, 220401.
- 141 D. Wang, Y. Zhou, H. Zhang, R. Zhang, H. Dong, R. Xu, Z. Cheng, Y. He and Z. Wang, *Inorg. Chem.*, 2020, **59**, 17356–17363.
- 142 E. Singh, P. Singh, K. S. Kim, G. Y. Yeom and H. S. Nalwa, *ACS Appl. Mater. Interfaces*, 2019, **11**, 11061–11105.

