



Cite this: *Org. Biomol. Chem.*, 2014, **12**, 8851

## Anion binding of a neutral bis(cyclopeptide) in water–methanol mixtures containing up to 95% water†

Fabian Sommer and Stefan Kubik\*

Anion receptor **2b** was designed and synthesized, which was structurally derived from a previously described bis(cyclopeptide) **2a** comprising two covalently linked cyclic hexapeptide rings with alternating L-proline and 6-aminopicolinic acid subunits. Solubilizing groups attached to the aromatic cyclopeptide subunits of **2b** cause a substantial improvement of water solubility with respect to **2a**, but have negligible effects on anion binding properties. Thus, anion affinity of **2b** could be evaluated in aqueous solvent mixtures in which **2a** is not sufficiently soluble, namely in water–methanol with a water content of up to 95 vol%. The solvent-dependent characterization of anion binding showed that the  $\log K_a$  values of the iodide and sulfate complexes of **2b** decrease linearly with increasing water content while the individual contributions of complexation enthalpy and entropy correlate with the solvent composition in a more complex manner. The obtained results provide insight into the factors that control anion affinity and selectivity of these neutral receptors in aqueous media. In addition, they show that substantial anion affinity can be expected even in 100% water.

Received 16th July 2014,  
Accepted 8th September 2014  
DOI: 10.1039/c4ob01497a

www.rsc.org/obc

## Introduction

Molecular recognition phenomena such as the interaction of a synthetic receptor with its substrate are very sensitive to the medium in which they take place.<sup>1</sup> While polar binding partners generally like to associate in non-polar solvents where interactions are strong and solvation is weak, the strength of interactions generally significantly drops upon increasing solvent polarity. Polar solvents not only reduce the strength of direct non-covalent interactions, they usually also solvate the binding partners more efficiently than non-polar ones, causing complex stability to suffer from an increasing enthalpic penalty associated with the desolvating receptor and/or substrate. Desolvating binding partners in polar solvents, particularly in water, can also become the driving force of complex formation, however, if it involves the release of high-energy water,<sup>2</sup> which results in an enthalpic advantage of binding, or leads to overall higher disorder, which is entropically favourable.<sup>3</sup>

Solvent-dependent evaluation of the binding properties of a synthetic receptor can shed light on the subtle interplay of the

factors that control receptor affinity and selectivity. Such investigations were performed, for example, to characterize glucose affinity of a synthetic carbohydrate receptor in chloroform–methanol and water–methanol mixtures.<sup>4</sup> A more recent investigation has addressed anion binding to diols in acetonitrile–chloroform mixtures revealing a non-linear correlation between complex stability and solvent composition.<sup>5</sup> In the area of anion coordination chemistry<sup>6</sup> solvent-dependent binding studies are routinely performed if a receptor turns out to possess an anion affinity in a specific solvent that is too high to be evaluated. If binding is too strong in DMSO, for example, more competitive water–DMSO mixtures are often used in which complex stability is lower and can thus be quantified.<sup>7</sup> The maximum amount of water in the solvent mixture is determined by receptor solubility and is usually chosen so as to not lower complex stability below the detection limit. The increase of the water content of the solvent mixture sometimes also simplified the receptor's mode of interaction, for example, from the formation of higher to well defined 1:1 complexes,<sup>7e,f,h</sup> but the consequences of changing the solvent composition on the thermodynamics of binding have not often been considered.

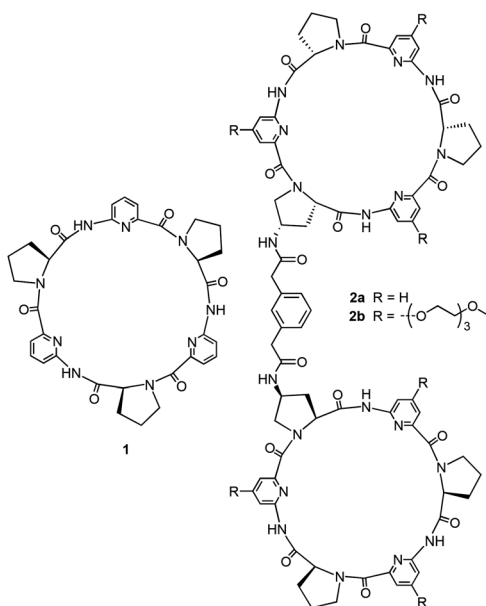
Here, we describe a bis(cyclopeptide) whose solubility allowed a detailed thermodynamic characterization of anion binding properties in a wide range of water–methanol mixtures. Such bis(cyclopeptides) were previously shown by us to interact with halides or sulfate anions in aqueous solvent mixtures.<sup>8</sup> They derive from cyclopeptide **1** whose mode of

Technische Universität Kaiserslautern, Fachbereich Chemie – Organische Chemie,  
Erwin-Schrödinger-Straße, D-67663 Kaiserslautern, Germany.  
E-mail: kubik@chemie.uni-kl.de

† Electronic supplementary information (ESI) available: Synthetic details for the chain elongation of dipeptides **4** and **5**, NMR and mass spectra of compounds **4**, **5**, **6**, and **2b**, and thermograms of selected ITC titrations. See DOI: 10.1039/c4ob01497a



binding involves sandwiching an inorganic anion between two cyclopeptide rings.<sup>9</sup> These 2 : 1 complexes could be converted into 1 : 1 complexes by covalently connecting two cyclopeptides *via* appropriate linking units. While anion binding of **1** could be evaluated in water–methanol mixtures containing up to 80% of water, the respective bis(cyclopeptides) are, unfortunately, considerably less soluble so that the water content of the mixture used to study the properties of, for example, **2a** could not exceed 50%.<sup>8c</sup> Other bis(cyclopeptides) allowed binding studies in water–acetonitrile mixtures containing up to 75% of water.<sup>8e</sup> The respective investigations indicated that hydrophobic interactions between the two cyclopeptide rings not involving direct receptor/substrate interactions contribute to the overall stability of the complexes formed. To what extent anion affinity of these receptors is retained in 100% water remained an open question, however.

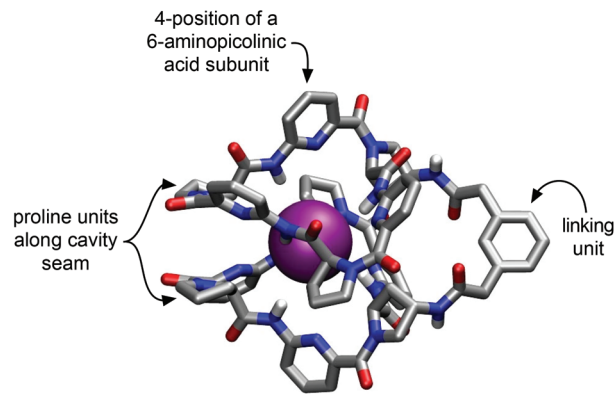


Further work involving these bis(cyclopeptides) therefore had to address improving their water solubility to allow binding studies in more competitive solvent mixtures. In this context, bis(cyclopeptide) **2b** containing solubilizing triethylene glycol residues was designed and synthesized. The evaluation of the anion affinity of **2b** by isothermal titration calorimetry (ITC) in a range of different solvent mixtures provided information about the factors influencing the affinity and selectivity of anion binding. Understanding these factors could eventually be helpful when targeting practical applications for such receptors, for example, in environmental monitoring, where systems should best work in water.<sup>10</sup>

## Results and discussion

### Structural design and synthesis

Our approach to improving the water solubility of **2a** without compromising binding properties relied on the introduction



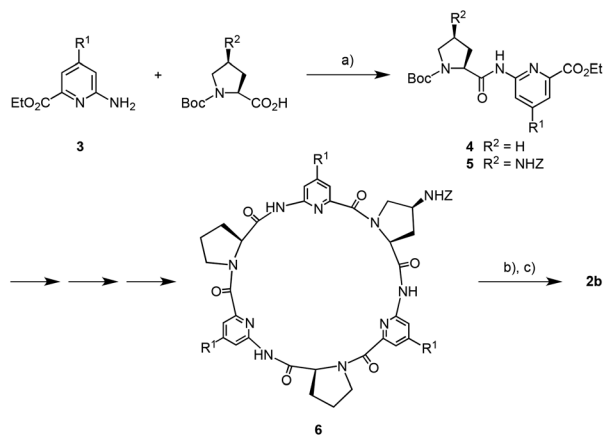
**Fig. 1** Calculated geometry of the iodide complex of **2a** obtained with the MMFF94 force field as implemented in PCModel, Serena Software, Inc. Hydrogen atoms at the carbon atoms of the receptor have been omitted for clarity.<sup>8c</sup>

of solubilizing groups into positions of the receptor in which their impact on binding properties was expected to be minimal. The corresponding structural considerations were based on the previously reported calculated structure of the iodide complex of **2a** as shown in Fig. 1.<sup>8c</sup>

This structure indicates that additional substituents on the bis(cyclopeptide) proline residues would be oriented close to the seam of the cavity where the two cyclopeptide moieties approach each other. Substituents in these positions were therefore expected to affect complex formation by steric effects. The phenylene moiety of the linker is oriented away from the cavity and would therefore make a better modification site. The number of groups that could be introduced here is limited, however, and it was therefore decided to incorporate the solubilizing groups into the 4-positions of the aminopicolinic acid subunits. This strategy allowed introduction of overall six additional groups expected to exhibit no strong effect on anion affinity because they all diverge from the receptor cavity. Triethylene glycol residues were chosen as solubilizing groups, which should increase water solubility without introducing charges so that competing effects on anion binding of other negatively charged species in solution could be avoided.

The 4-substituted 6-aminopicolinic acid derivative **3** required for the synthesis of **2b** was obtained from the commercially available chelidamic acid according to a reported procedure.<sup>11</sup> This amine was coupled to (2*S*)-1-(*tert*-butyloxycarbonyl) proline and (2*S*,4*S*)-4-(benzyloxycarbonylamino)-1-(*tert*-butyloxycarbonyl)proline<sup>12</sup> using PyCloP as a coupling reagent to yield, respectively, the dipeptides **4** and **5** required for the synthesis of the cyclopeptide moieties of **2b** (Scheme 1). Appropriate chain elongation of these dipeptides afforded the linear cyclopeptide precursor, which was deprotected at both ends and cyclized by following established protocols.<sup>8a,13</sup> The resulting cyclopeptide **6**, containing one *Z*-protected 4-aminoproline unit, was subjected to hydrogenation and then reacted with 2,2'-(1,3-phenylene)diacetic acid in the presence of TBTU.<sup>8c</sup> The coupling product **2b** was obtained





**Scheme 1** Synthesis of bis(cyclopeptide) **2b** ( $R^1 = (\text{OCH}_2\text{CH}_2)_3\text{OCH}_3$ ). (a) Chlorotripropylidiphosphonium hexafluorophosphate (PyCloP), *N,N*-diisopropylethylamine,  $\text{CH}_2\text{Cl}_2$ , 25 °C, 10 d, **4** 82%, **5** 96%; (b)  $\text{H}_2$ , 1.2 equiv. HCl, 10% Pd/C,  $\text{CH}_2\text{Cl}_2$ – $\text{CH}_3\text{OH}$ , 1 : 1 (v/v), 25 °C, 18 h; (c) 2,2'-(1,3-phenylene)diacetic acid, 2-(1*H*-benzotriazole-1-yl)-1,1,3,3-tetramethyluronium (TBTU), *N,N*-diisopropylethylamine, dimethylformamide, 25 °C, 2 h, 47% over 2 steps. Z = benzyloxy carbonyl, Boc = *tert*-butoxy carbonyl.

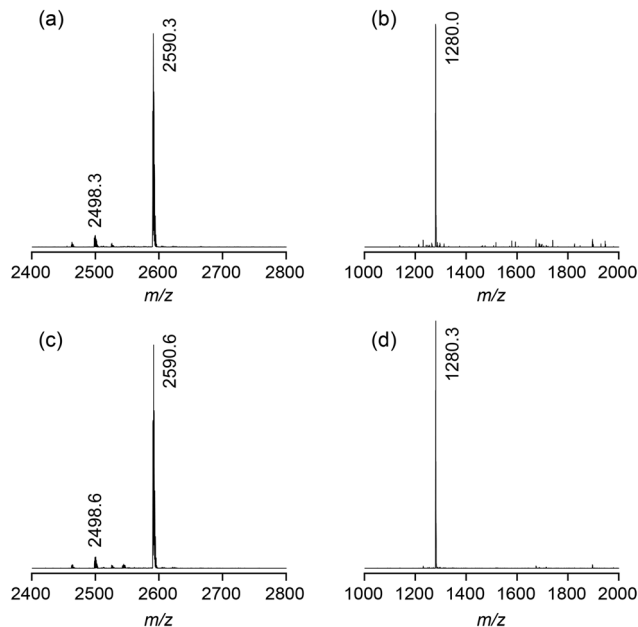
after chromatographic purification in analytically pure form and in sufficient amounts for the following binding studies.

### Qualitative binding studies

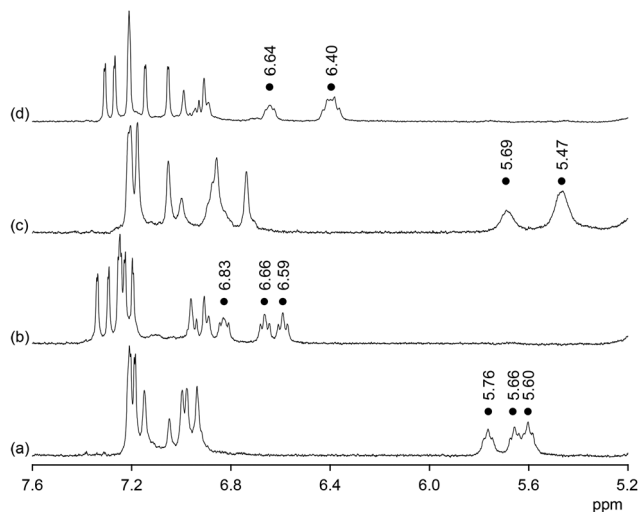
Qualitative information about the binding properties of **2b** was derived from ESI mass spectrometric and NMR spectroscopic investigations. Because the water solubility of **2b**, although considerably improved by the presence of the six triethylene glycol residues, unfortunately turned out to be still insufficient to allow binding studies in 100% water, these experiments were performed in 90% water–methanol. In addition, measurements in 50% water–methanol mixtures were carried out to compare the properties of **2b** with those of **2a**. These binding studies concentrated on sulfate and iodide as substrates because both anions generally exhibit strongest interactions with our bis(cyclopeptides) and represent prototypes of strongly and weakly coordinating anions, respectively.<sup>8,13</sup>

Fig. 2 shows the ESI-TOF MS spectra of **2b** in the presence of sodium iodide or sulfate. In all spectra, the most prominent peak is that of the 1 : 1 complex between the bis(cyclopeptide) and the respective anion ( $[\text{M} + \text{I}]^- = 2590.0$ ,  $[\text{M} + \text{SO}_4]^{2-} = 1279.5$ ). Minor additional peaks could be assigned to the chloride complex ( $[\text{M} + \text{Cl}]^- = 2498.1$ ). Mass spectrometry thus indicated that **2b** binds to iodide and sulfate anions independent of the composition of the solvent mixture. Moreover, the major complex species are 1 : 1 complexes as in the case of other structurally related bis(cyclopeptides).<sup>8</sup>

Additional evidence for the ability of **2b** to interact with anions in 90% water–methanol came from NMR spectroscopy. Fig. 3 shows the effect of sulfate anions on the  $^1\text{H}$  NMR spectra of **2b** in 50%  $\text{D}_2\text{O}$ – $\text{CD}_3\text{OD}$  and 90%  $\text{D}_2\text{O}$ – $\text{CD}_3\text{OD}$ . In the absence of sulfate anions the H( $\alpha$ ) protons on the proline residues of **2b** absorb between 5.60 and 5.76 ppm in 50%



**Fig. 2** ESI-TOF MS spectra (negative mode) of **2b** (1 mM) in the presence of 1 equiv. of NaI (a) or  $\text{Na}_2\text{SO}_4$  (b) in 50% water–methanol and 1 equiv. of NaI (c) or  $\text{Na}_2\text{SO}_4$  (d) in 90% water–methanol.



**Fig. 3**  $^1\text{H}$  NMR spectra of **2b** (1.8 mM) prior (a) and after (b) the addition of 2 equiv. of  $\text{Na}_2\text{SO}_4$  in 50%  $\text{D}_2\text{O}$ – $\text{CD}_3\text{OD}$  and of **2b** (1.0 mM) prior (c) and after (d) the addition of 2 equiv. of  $\text{Na}_2\text{SO}_4$  in 90%  $\text{D}_2\text{O}$ – $\text{CD}_3\text{OD}$ . The dots indicate the signals of the H( $\alpha$ ) protons on the proline residues of **2b**.

$\text{D}_2\text{O}$ – $\text{CD}_3\text{OD}$ . In 90%  $\text{D}_2\text{O}$ – $\text{CD}_3\text{OD}$  these signals are slightly shifted upfield and those of the unsubstituted proline rings collapse into one. Addition of sulfate causes a substantial downfield shift of the proline H( $\alpha$ ) signals in both solvents by *ca.* 1 ppm. In addition, spreading out of the signals in the aromatic region of the spectra is observed. Both effects are characteristic features of all anion binding bis(cyclopeptides) studied so far.<sup>8,13</sup> The shifts of the proline H( $\alpha$ ) signals, for example, are due to the spatial proximity of the corresponding protons



to the anion once it is included into the bis(cyclopeptide) cavity. NMR spectroscopy thus indicates that the mode of anion binding of **2b** does not differ from that of structurally related receptors and that it is independent of solvent composition. Analogous albeit slightly smaller shifts of the proline H ( $\alpha$ ) signals were observed in the  $^1\text{H}$  NMR spectra of **2b** after addition of iodide anions in both solvent mixtures, consistent with the more weakly coordinating nature of the halide in comparison with sulfate anions (see ESI†).

### Quantitative binding studies

Anion binding of **2b** was quantified by isothermal titration calorimetry (ITC).<sup>14</sup> Initial investigations addressed the question if and to what extent anion affinity of **2b** is affected by the presence of the triethylene glycol units. To this end, binding of **2b** to iodide and sulfate was evaluated in a solvent mixture, in which quantitative information about the properties of **2a** is available, namely in 50% water–methanol. The obtained results together with the ones previously reported for bis(cyclopeptide) **2a** are summarized in Table 1.

Table 1 shows that iodide and sulfate affinity of **2b** in 50% water–methanol is practically indistinguishable from that of **2a**. Moreover, no major differences are apparent within the error limits in the thermodynamics of complex formation. The conclusion that can be drawn from this result is that, in accordance with the design strategy, the impact of the triethylene glycol residues in **2b** on anion affinity is negligible. Compound **2b** can thus be expected to behave like previously described bis(cyclopeptides) with the important advantage that it allows anion recognition to be followed in much more competitive media.

Anion binding of **2b** was subsequently studied in a range of different water–methanol mixtures. While iodide recognition could be evaluated in mixtures containing between 20% and 95% of water, solubility problems prevented titrations with sodium sulfate in mixtures containing less than 30% of water. In addition, no reliable results could be derived from the titration with sodium sulfate in 90% water–methanol because the enthalpy of sulfate complexation changes sign close to this solvent composition. The results of all measurements are summarized in Table 2 and depicted graphically in Fig. 4. The stoichiometric factors  $n$  deriving from these titrations support the 1 : 1 stoichiometry of both anion complexes of **2b**.

Fig. 4a and 4b show that, as expected, iodide and sulfate affinity of **2b** decrease upon increasing the water content of the solvent. For both anions the correlation is linear ( $r^2 > 0.97$ ), with a more pronounced drop observed for sulfate binding. The different slopes of the lines cause an inversion of anion affinity from sulfate as the better substrate across the major range of solvent compositions to iodide in mixtures containing more than 90% of water. Thus, the intrinsically less strongly coordinating anion forms the more stable complex in the most competitive solvent mixtures. Assuming that the observed linear correlation between complex stability and solvent composition extends to 100%, an iodide affinity  $\log K_a$  of 4.0 can be expected for **2b** in water and a sulfate affinity of 3.5.

While the reduction of complex stability in the more competitive solvent mixtures has several reasons, one being the weakened receptor/anion interactions, the different extents to which sulfate and iodide affinity of **2b** decrease with increasing water content of the solvent are likely partially due to the

**Table 1** Association constants, enthalpies, and entropies of binding of  $\text{Na}_2\text{SO}_4$  and  $\text{NaI}$  to bis(cyclopeptides) **2a** and **2b**<sup>a</sup>

	Sulfate			Iodide		
	$\log K_a$	$\Delta H$	$T\Delta S$	$\log K_a$	$\Delta H$	$T\Delta S$
<b>2a</b> <sup>8c</sup>	$5.97 \pm 0.02$	$-13.2 \pm 1.1$	$20.9 \pm 1.2$	$4.43 \pm 0.11$	$-15.4 \pm 0.7$	$9.8 \pm 1.2$
<b>2b</b>	$5.87 \pm 0.02$	$-14.7 \pm 0.8$	$18.8 \pm 0.8$	$4.59 \pm 0.01$	$-16.2 \pm 0.8$	$10.0 \pm 0.7$

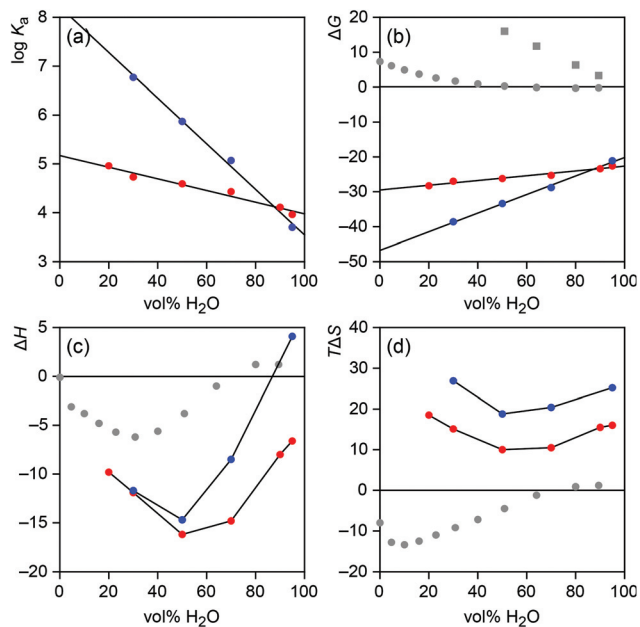
<sup>a</sup> Recorded in 50% water–methanol at 298 K; energies in  $\text{kJ mol}^{-1}$ ; the values are means of at least three independent measurements with the standard deviations specified.

**Table 2** Association constants, enthalpies, entropies, and stoichiometric factors for the binding of  $\text{Na}_2\text{SO}_4$  and  $\text{NaI}$  to bis(cyclopeptide) **2b** in different solvent mixtures<sup>a</sup>

Vol% <sup>b</sup>	Sulfate				Iodide			
	$\log K_a$	$\Delta H$	$T\Delta S$	$n$	$\log K_a$	$\Delta H$	$T\Delta S$	$n$
20	n.d. <sup>c</sup>	n.d.	n.d.	n.d.	$4.96 \pm 0.02$	$-9.8 \pm 0.3$	$18.5 \pm 0.3$	1.01
30	$6.77 \pm 0.10$	$-11.7 \pm 0.2$	$26.9 \pm 0.7$	0.93	$4.73 \pm 0.01$	$-11.9 \pm 0.2$	$15.1 \pm 0.2$	0.99
50	$5.87 \pm 0.02$	$-14.7 \pm 0.8$	$18.8 \pm 0.8$	0.93	$4.59 \pm 0.01$	$-16.2 \pm 0.8$	$10.0 \pm 0.7$	1.03
70	$5.07 \pm 0.02$	$-8.5 \pm 0.3$	$20.4 \pm 0.4$	0.93	$4.43 \pm 0.02$	$-14.8 \pm 0.2$	$10.5 \pm 0.3$	1.03
90	n.d.	n.d.	n.d.	n.d.	$4.12 \pm 0.02$	$-8.0 \pm 0.4$	$15.5 \pm 0.5$	1.08
95	$3.70 \pm 0.05$	$4.1 \pm 0.8$	$25.2 \pm 0.5$	0.77	$3.96 \pm 0.03$	$-6.6 \pm 0.3$	$16.0 \pm 0.5$	1.18

<sup>a</sup> Recorded at 298 K; energies in  $\text{kJ mol}^{-1}$ ; the values are means of at least three independent measurements with the standard deviations specified. <sup>b</sup> Vol% of water in the water–methanol mixture. <sup>c</sup> Not determined.





**Fig. 4** Solvent dependence of the stability (a), Gibbs free energy of formation (b), formation enthalpy (c), and formation entropy (d) of the iodide (red) and sulfate (blue) complexes of **2b**. In addition, b–d contain data about the Gibbs energy (b), enthalpy (c), and entropy (d) of the transfer of iodide (grey dots) and sulfate (grey squares) anions from water to water–methanol mixtures.<sup>16</sup> All energies in  $\text{kJ mol}^{-1}$ .

different nature of both anions, reflected in the ease with which they are desolvated. With a free energy of hydration  $\Delta G_{\text{hydr}}$  of  $-1090 \text{ kJ mol}^{-1}$ , sulfate anions are significantly more strongly solvated in water than iodide anions whose free energy of hydration amounts to  $-283 \text{ kJ mol}^{-1}$ .<sup>15</sup> Information about how these values change in water–methanol mixtures can be derived from the literature known Gibbs energies required for transferring the respective anion from water into a water–methanol mixture.<sup>16</sup> The corresponding data, included in Fig. 4b, show that transferring iodide or sulfate anions from water to water–methanol mixtures becomes increasingly endergonic as the methanol content of the solution rises. Thus, desolvating both anions becomes easier in terms of  $\Delta G$  in less polar media, where interactions can also be assumed to be stronger. Not surprisingly, this effect is more pronounced for the strongly coordinating, doubly charged sulfate anion, which is consistent with the stronger dependence of sulfate affinity on solvent composition. Thus, sulfate affinity of **2b** presumably benefits stronger than iodide affinity from the increasingly more facile anion desolvation as the methanol content of the solvent rises. Conversely, in the high water content solvents, anion desolvation has a stronger detrimental effect on complex stability in the case of sulfate. In these solvents, the free energy required for desolvating the sulfate anion seems to compensate sulfate/receptor interactions to such an extent that the overall  $\log K_a$  of the sulfate complex approaches or even falls behind that of the complex with the intrinsically weaker bound but less efficiently hydrated iodide anion.

In this context it is worth noting that the stability of the sulfate complex of **2b** drops less steeply with increasing water content of the solvent mixture than expected on the basis of the solvent dependence of the Gibbs energy of sulfate desolvation. Specifically, one would expect sulfate affinity of **2b** to drop by  $3.3 \text{ kJ mol}^{-1}$  with every 10% increase of water based on the extent to which the Gibbs energy of the transfer of sulfate anions changes with solvent composition, yet the observed decrease of the complex stability only amounts to  $2.7 \text{ kJ mol}^{-1}$ . This result is consistent with previous results obtained for iodide complexation of another bis(cyclopeptide) in water–acetonitrile mixtures, and supports the notion that hydrophobic interactions between the apolar subunits of the cyclopeptide moieties of these bis(cyclopeptides) contribute to complex stability in solvents with a high water content.<sup>8e</sup> These hydrophobic interactions reinforce complex stability beyond the strength of the direct receptor/substrate interactions.<sup>17a</sup> Unfortunately, analogous considerations for iodide complexation are less clear because the Gibbs energy of the transfer of iodide anions from water to water–methanol mixtures does not change linearly with solvent composition (Fig. 4b).

Further insights into the solvent-dependent thermodynamics of anion binding to **2b** were obtained by considering the enthalpic and entropic contributions independently. Interestingly, it turned out that the complexation enthalpy and entropy do not correlate with solvent composition in a linear fashion (Fig. 4c and 4d). Both thermodynamic parameters exhibit U-shaped curves with minima at 50% water–methanol independent of the anion. In mixtures containing more or less water, complex formation is enthalpically less favourable and entropically more favourable. These opposing enthalpic and entropic terms produce an overall monotonous decrease of the absolute values of the Gibbs energies of complex formation across the whole investigated solvent range.<sup>17b</sup>

Comparing the curves in Fig. 4b and 4c shows that the more pronounced drop of the sulfate affinity of **2b** upon increasing the water content of the solvent is mainly enthalpic in origin. While the difference in the complexation entropy of sulfate and iodide binding remains relatively constant over the range of solvent mixtures studied, sulfate binding becomes enthalpically significantly less favourable in more competitive media than iodide binding, eventually causing sulfate complexation to become endothermic in 95% water–methanol. To relate this effect to the desolvation enthalpies of iodide and sulfate anions is not straightforward, however.

In water, desolvating the more strongly coordinating doubly charged sulfate anion requires more energy than dehydrating iodide ( $\Delta H_{\text{hydr}}(\text{SO}_4^{2-}) = -1035 \text{ kJ mol}^{-1}$ ,  $\Delta H_{\text{hydr}}(\text{I}^-) = -291 \text{ kJ mol}^{-1}$ ). Conversely, dehydration of sulfate is entropically more favourable ( $\Delta S_{\text{hydr}}(\text{SO}_4^{2-}) = -200 \text{ J K}^{-1} \text{ mol}^{-1}$ ,  $\Delta S_{\text{hydr}}(\text{I}^-) = -36 \text{ J K}^{-1} \text{ mol}^{-1}$ ).<sup>15</sup> Assuming that these trends hold over the whole range of solvent mixtures studied, they are consistent with the generally less favourable enthalpy and more favourable entropy of sulfate over the iodide binding observed for **2b**. Exact information about the dependence of the thermodyna-



mics of anion desolvation on solvent composition can again be derived from the enthalpies and entropies associated with transferring an anion from water to water–methanol mixtures. These values are reported for iodide and have been included in Fig. 4c and 4d.<sup>16a</sup> Respective thermodynamic data for sulfate are not available.

Interestingly, Fig. 4c and 4d show that the enthalpy and entropy of transferring iodide from water into water–methanol mixture also do not correlate linearly with solvent composition. Transferring iodide into a mixture with higher water content is slightly endothermic. At *ca.* 70% water content desolvation enthalpy changes sign and the exothermicity of desolvation reaches a maximum in *ca.* 30% water–methanol. Thus, desolvating iodide is more difficult in water–methanol mixtures than in 100% water below a water content of 70%. This trend is clearly not reflected in the observed enthalpic contribution to iodide complexation of **2b**, which is most favourable in 50% water–methanol. A correlation of the enthalpy of iodide binding and desolvation is therefore not directly evident. In addition, due to the lack of respective data for sulfate anions a comparison of how desolvation enthalpies of the two anions differ when varying the solvent composition cannot be made.

One also has to consider that ITC titrations yield a global picture of complex formation involving several contributions, which makes it problematic to attribute an observed effect to a single cause. Besides anion desolvation, the thermodynamics of forming a complex such as the one shown in Fig. 1 are also affected by desolvation of parts of the receptor and by direct receptor/substrate interactions. In addition, binding of the anion could require separating an ion pair, particularly in less polar media, which could have an additional impact on the overall thermodynamic signature of complex formation.

It can be expected that direct interactions between an anion and **2b** are favoured by enthalpy. The increase of the water content of the solvent should diminish this favourable term while desolvation of the binding partners should produce a favourable entropic term for complex formation. These qualitative trends are indeed visible in solvents containing more than 50% of water (Fig. 4c and 4d), but to explain the increasingly unfavourable enthalpy of binding and the increasingly favourable entropy of binding in solvent mixtures with a high methanol content other factors have to be considered. One could relate to ion pairing, which could make it more difficult to bind the anion in less polar media. To test this assumption, iodide complexation was also characterized in the least polar solvent mixture by using sodium iodide in the presence of an excess of 15-crown-5 and tetramethylammonium iodide. Should ion pairing have an effect of iodide binding, changing the nature of the cation was expected to result in characteristic changes in the thermodynamic signature of iodide complexation. Interestingly, it turned out that the interactions between **2b** and iodide anions are practically independent of the counterion (Table 3), which strongly suggests that ion pairing is not responsible for the reduction of the enthalpic contribution to complex formation observed in solvent mixtures containing more than 50% of methanol.

**Table 3** Association constants, enthalpies, and entropies of binding of the iodide anion to bis(cyclopeptide) **2b** in the presence of different counterions<sup>a</sup>

Counterion	log $K_a$	$\Delta H$	$T\Delta S$
Sodium	4.96	−9.8	18.5
Sodium + 15-crown-5	4.92	−10.1	18.0
Tetramethylammonium	5.02	−10.7	17.9

<sup>a</sup> Recorded at 298 K; energies in  $\text{kJ mol}^{-1}$ .

An indirect indication that the solvent-dependent changes of complexation enthalpy and entropy are not only related to the properties of the anions or the salts is the fact that these trends are relatively anion independent. Complexation enthalpy is the best and entropy the worst in 50% water–methanol for both anions, in spite of their significantly different properties, suggesting that the reasons for the U-shapes of the curves in Fig. 4c and 4d lie also with the receptor.

Based on these arguments, we attribute the observed reduction of the favourable binding enthalpies at high methanol content to receptor desolvation, specifically the release of solvent molecules that surround the NH groups inside the binding site of **2b**. Assuming that the binding site of **2b** is preferentially solvated by water molecules, releasing these molecules upon anion binding should become enthalpically more difficult (and entropically more favourable) as the methanol content of the solvent mixture rises. That receptor desolvation has indeed a pronounced effect on the anion binding of our bis(cyclopeptides) has been shown previously. The endothermicity of sulfate complexation of a triply-linked bis(cyclopeptide) has, for example, been partly ascribed to the enthalpically difficult desolvation of the efficiently hydrated binding site of this receptor<sup>13</sup> and the highly favourable binding entropy of this and related doubly-linked bis(cyclopeptides)<sup>8f</sup> to the associated entropic advantage.

The solvent-dependence of binding enthalpy observed for **2b** can thus best be rationalized by strong binding site hydration at high methanol content and weakened receptor/substrate interactions at high water content combined with the effects of anion desolvation in the more competitive solvent mixtures.‡ This interpretation is consistent with the observed trends in complexation entropy. Binding becomes entropically more favourable in solvents with a high water content because anion desolvation and hydrophobic interactions within the anion complexes of **2b** contribute favourably to complex formation while the release of water molecules from the binding site of the receptor explains the favourable entropic term in solvents containing an excess of methanol.

‡ Additional contributions could come from effects of solvent composition on receptor preorganization, which are, however, difficult to assess, although the effects of solvent composition on the NMR spectra of **2b** (Fig. 2) indicate that receptor conformation is affected by the solvent.



One additionally has to consider that enthalpy and entropy generally correlate with enthalpic improvements of complex stability being associated with negative effects on complexation entropy and *vice versa*.<sup>17b</sup> This correlation, which can be rationalized in terms of entropic disadvantages resulting from the tightening of receptor/substrate interactions, is also evident when comparing the influence of solvent composition on the enthalpy and the entropy of anion binding of **2b**. Changes in solvent composition that lead to a more favourable binding enthalpy evidently have a negative influence on the entropy of binding.

## Conclusions

In conclusion, by introducing solubilizing groups into the 6-aminopicolinic acid subunits of **2a** considerable progress has been made in improving the water solubility of these bis(cyclopeptides). While solubility in 100% water could not be achieved, the corresponding bis(cyclopeptide) **2b** allowed anion binding to be quantified in water-methanol mixtures containing up to 95% water. These investigations revealed subtle effects of the composition of the solvent mixture on the thermodynamics of binding. The obtained results provide insight into the factors that influence the interactions of these neutral receptors with anions in aqueous media, demonstrating, for example, the importance of solvation effects for complex formation, which could cause a weakly coordinating anion to bind more strongly to a receptor in competitive aqueous media than a strongly coordinating one.

Moreover, extrapolation of the binding properties of **2b** to 100% water suggested substantial iodide and sulfate affinity even in water. With a  $\log K_a$  of *ca.* 4, the expected iodide affinity of these bis(cyclopeptides) in water is of the same order, potentially even higher than that of other previously described neutral anion receptors such as the bambusurils or related analogues. The next generation of water-soluble bis(cyclopeptides) is now required to confirm these results. These receptors will likely feature other solubilizing groups in the aminopicolinic acid subunits or additional groups in the linker. Work in both directions is currently in progress.

## Experimental

### General details

Analyses were carried out as follows: melting points, Müller SPM-X 300; NMR, Bruker DPX 600, Bruker DPX 400 (peak assignments were confirmed by using H,H-COSY and HMQC spectra, spectra of Boc-protected linear peptides were measured at 100 °C in *d*<sub>6</sub>-DMSO because the hindered rotation around the bond between the Boc group and the proline nitro-

gen atom complicates the spectra at 25 °C); MALDI-TOF-MS, Bruker Ultraflex TOF/TOF; ESI-MS, Bruker Esquire 6000; elemental analysis, Elementar vario Micro cube; optical rotation, Perkin Elmer 241 MC digital polarimeter (*d* = 10 cm); RP chromatography, MERCK LiChroprep RP-8 (40–63 μm) pre-packed column size B (310–25); preparative HPLC, Dionex Ultimate 3000 (column, Supelco, Ascentis C18, 250 × 21.2 mm, 5 μm particle size; flow, 10 mL min<sup>-1</sup>; eluent, aqueous: water, organic: acetonitrile; the following gradients were used for the isolation of **6** and **2b**: **6**: 0 min, 25% organic; 0–38 min, linear increase to 45% organic; 38–40 min, linear increase to 50% organic; 40–42 min, 50% organic; 42–45 min, linear decrease to 25% organic; 45–50 min, 25% organic; **2b**: 0 min, 25% organic; 0–35 min, linear increase to 40% organic; 35–48 min, 40% organic; 48–50 min, linear decrease to 25% organic; 50–55 min, 25% organic); ITC, Microcal VP-ITC.

The following abbreviations are used: Boc, *tert*-butoxy carbonyl; Z, benzyloxy carbonyl; DIEA, *N*-ethyl-diisopropylamine; PyCloP, chlorotripyrrolidinophosphonium hexafluorophosphate; TBTU, *O*-(1*H*-benzotriazol-1-yl)-*N,N,N',N'*-tetramethyluronium tetrafluoroborate; Pro, *L*-proline; Apro, (4*S*)-4-amino-*L*-proline; Pda, 2,2'-(1,3-phenylene)diacetic acid, Mapa, 4-[2-[2-(2-methoxyethoxy)ethoxy]ethoxy]-2-aminopyridine-6-carboxylic acid; Teg, triethylene glycol.

### Materials

All solvents were dried according to standard procedures prior to use. DMF p.a. was purchased and used without further purification. PyCloP was prepared according to the literature procedures while TBTU was purchased.

**Dipeptide Boc-Pro-Mapa-OEt 4.** Amine **3**<sup>11</sup> (0.82 g, 2.5 mmol) and (2*S*)-1-(*tert*-butyloxycarbonyl)proline (0.65 g, 3.0 mmol) were dissolved in dry dichloromethane (50 mL). To this solution PyCloP (1.26 g, 3.0 mmol) and DIEA (1.04 mL, 6.0 mmol) were added. The mixture was stirred at 25 °C for 10 d. Afterwards the solvent was removed *in vacuo* and the residue purified by column chromatography (SiO<sub>2</sub>, ethyl acetate). Yield 1.08 g (82%), colourless solid; m.p. 44–48 °C; [ $\alpha$ ]<sub>D</sub><sup>22</sup> = -33.3 (*c* = 1, chloroform); <sup>1</sup>H NMR (600 MHz, 100 °C, [D<sub>6</sub>]DMSO):  $\delta$  = 10.10 (s, 1H, NH), 7.86 (d, <sup>4</sup>*J* = 2.1 Hz, 1H, MapaH(3)), 7.29 (d, <sup>4</sup>*J* = 2.1 Hz, 1H, MapaH(5)), 4.47–4.49 (m, 1H, ProH( $\alpha$ )), 4.36 (q, <sup>3</sup>*J* = 7.0 Hz, 2H, ethyl-CH<sub>2</sub>), 4.27 (t, <sup>3</sup>*J* = 4.8 Hz, 2H, TegCH<sub>2</sub>), 3.81 (t, <sup>3</sup>*J* = 4.8 Hz, 2H, TegCH<sub>2</sub>), 3.54–3.63 (m, 6H, TegCH<sub>2</sub>), 3.36–3.46 (m, 4H, ProH( $\delta$ )/TegCH<sub>2</sub>), 3.27 (s, 3H, TegCH<sub>3</sub>), 2.19–2.25 (m, 1H, ProH( $\beta$ )), 1.89–1.98 (m, 2H, ProH( $\gamma$ )/ProH( $\beta$ )), 1.81–1.85 (m, 1H, ProH( $\gamma$ )), 1.38 + 1.41 (2s, 9H, Boc-H), 1.35 (t, <sup>3</sup>*J* = 7.1 Hz, 3H, ethyl-CH<sub>3</sub>) ppm; <sup>13</sup>C NMR (151 MHz, 100 °C, [D<sub>6</sub>]DMSO):  $\delta$  = 171.8 (Pro-CO), 166.4 (MapaC(4)), 163.8 (COOEt), 152.8 + 153.0 (MapaC(2)/Boc-CO), 147.5 (MapaC(6)), 107.4 (MapaC(5)), 101.9 (MapaC(3)), 78.3 (Boc-C), 67.6 + 68.1 + 69.2 + 69.3 + 69.6 + 70.8 (TegC), 60.5 (ethyl-CH<sub>2</sub>), 59.7 (ProC( $\alpha$ )), 57.3 (TegCH<sub>3</sub>), 46.1 (ProC( $\delta$ )), 29.7 (ProC( $\beta$ )), 27.5 (Boc-CH<sub>3</sub>), 22.8 (ProC( $\gamma$ )), 13.3 (ethyl-CH<sub>3</sub>) ppm; MS (MALDI-TOF) *m/z* (%) 526.3 (100) [M + H]<sup>+</sup>, 548.3 (75) [M + Na]<sup>+</sup>, 564.3 (13) [M + K]<sup>+</sup>; elemental

<sup>§</sup>The  $\log K_a$  of the iodide complex of bambus[6]uril in acetonitrile-water 1:1 amounts to 5.9<sup>19a</sup> and that of biotin[6]uril in carbonate buffer at pH 10.8 to 3.3.<sup>19b</sup>



analysis calcd (%) for  $C_{25}H_{39}N_3O_9 \cdot H_2O$ : C 55.24, H 7.60, N 7.73; found C 55.42, H 7.38, N 7.36.

**Dipeptide Boc-(4Z-Apro)-Mapa-OEt 5.** Amine  $3^{11}$  (0.56 g, 1.7 mmol) and (2S,4S)-4-(benzyloxycarbonylamino)-1-(tert-butyl-oxycarbonyl)proline (0.66 g, 1.8 mmol) were dissolved in dry dichloromethane (40 mL). To this solution PyCloP (0.76 g, 1.8 mmol) and DIEA (0.76 mL, 4.4 mmol) were added. The mixture was stirred at 25 °C for 10 d. Afterwards the solvent was removed *in vacuo* and the residue purified by column chromatography (SiO<sub>2</sub>, ethyl acetate). Yield 1.09 g (96%), colourless solid; m.p. 74–77 °C;  $[\alpha]_D^{22} = -16.7$  ( $c = 1$ , chloroform); <sup>1</sup>H NMR (600 MHz, 100 °C, [D<sub>6</sub>]DMSO):  $\delta = 10.28$  (s, 1H, NH), 7.85 (d, <sup>4</sup>J = 2.0 Hz, 1H, MapaH(3)), 7.29–7.35 (m, 6H, MapaH(5)/PhH), 6.91 (d, <sup>3</sup>J = 6.1 Hz, 1H, Z-NH), 5.07 (d, <sup>2</sup>J = 12.7 Hz, 1H, Z-CH<sub>2</sub>), 5.04 (d, <sup>2</sup>J = 12.7 Hz, 1H, Z-CH<sub>2</sub>), 4.49–4.51 (m, 1H, AproH( $\alpha$ )), 4.36 (q, <sup>3</sup>J = 7.1 Hz, 2H, ethyl-CH<sub>2</sub>), 4.26 (t, <sup>3</sup>J = 4.8 Hz, TegCH<sub>2</sub>), 4.08–4.12 (m, 1H, Apro( $\gamma$ )), 3.81 (t, <sup>3</sup>J = 4.8 Hz, 2H, TegCH<sub>2</sub>), 3.72–3.75 (m, 1H, AproH( $\delta$ )), 3.61–3.63 (m, 2H, TegCH<sub>2</sub>), 3.54–3.58 (m, 4H, TegCH<sub>2</sub>), 3.44–3.46 (m, 2H, TegCH<sub>2</sub>), 3.25–3.28 (m, 4H, AproH( $\delta$ )/TegCH<sub>3</sub>), 2.53–2.58 (m, 1H, AproH( $\beta$ )), 1.91–1.96 (m, 1H, AproH( $\beta$ )), 1.37 + 1.40 (2s, 9H, Boc-H), 1.35 (t, <sup>3</sup>J = 7.1 Hz, 3H, ethyl-CH<sub>3</sub>) ppm; <sup>13</sup>C NMR (151 MHz, 100 °C, [D<sub>6</sub>]DMSO):  $\delta = 171.7$  (Apro-CO), 166.4 (MapaC(4)), 163.7 (COOEt), 154.9 (Z-CO), 152.6 + 152.8 (MapaC(2)/Boc-CO), 147.5 (MapaC(6)), 136.5 (PhC(1)), 127.6 (PhC(3)), 127.0 (PhC(4)), 126.8 (PhC(2)), 107.5 (MapaC(5)), 102.1 (MapaC(3)), 78.7 (Boc-C), 67.6 + 68.1 + 69.2 + 69.3 + 69.6 + 70.8 (TegC), 65.0 (Z-CH<sub>2</sub>), 60.5 (ethyl-CH<sub>2</sub>), 58.6 (AproC( $\alpha$ )), 57.3 (TegCH<sub>3</sub>), 51.4 (AproC( $\delta$ )), 48.9 (AproC( $\gamma$ )), 35.2 (AproC( $\beta$ )), 27.5 (Boc-CH<sub>3</sub>), 13.3 (ethyl-CH<sub>3</sub>) ppm; MS (MALDI-TOF)  $m/z$  (%) 675.5 (100%) [M + H]<sup>+</sup>, 697.5 (60) [M + Na]<sup>+</sup>; elemental analysis calcd (%) for C<sub>33</sub>H<sub>46</sub>N<sub>4</sub>O<sub>11</sub>: C 58.74, H 6.87, N 8.30; found C 58.65, H 6.93, N 8.04.

**cyclo[(4Z-Apro)-Mapa-(Pro-Mapa)<sub>2</sub>] 6.** The linear precursor of **6**, hexapeptide H-(4Z-Apro)-Mapa-(Pro-MAPA)<sub>2</sub>-OH·4HCl (see ESI† for the synthesis from **4** and **5**) (1.45 g, 1 mmol) was dissolved in a mixture of degassed DMF (30 mL) and DIEA (0.77 mL, 4.4 mmol). The resulting solution was added dropwise to a solution of TBTU (1.28 g, 4.0 mmol) and DIEA (0.35 mL, 2.0 mmol) in degassed DMF (140 mL) at 80 °C over a period of 4 h. Afterwards the mixture was stirred at 80 °C for another 1.5 h. The solvent was removed *in vacuo* and the residue purified by column chromatography. An initial purification step was carried out using a silica gel column (acetone). The material recovered was further purified on an RP-8 column. For this, it was dissolved in a small amount of DMF and applied to a column conditioned with 1,4-dioxane–H<sub>2</sub>O, 1 : 10. The eluent composition was gradually changed until the pure product eluted (1,4-dioxane–H<sub>2</sub>O, 1 : 1). Analytically pure product was obtained by preparative HPLC. Yield 0.41 g (32%), colourless solid. m.p. 63–66 °C;  $[\alpha]_D^{22} = -228.9$  ( $c = 3$ , methanol); <sup>1</sup>H NMR (600 MHz, 25 °C, [D<sub>4</sub>]MeOD–D<sub>2</sub>O, 1 : 1 (v/v)):  $\delta = 7.00$ –7.26 (m, 11H, MapaH(3)/MapaH(5)/PhH), 5.79–5.87 (m, 1H, AproH( $\alpha$ )), 5.63–5.72 (m, 2H, ProH( $\alpha$ )), 4.94 (d, <sup>2</sup>J = 12.5 Hz, 1H, Z-CH<sub>2</sub>), 4.90 (d, <sup>2</sup>J = 12.4 Hz, 1H, Z-CH<sub>2</sub>), 4.24–4.29 (m, 1H, AproH( $\gamma$ )), 3.95–4.12 (m, 7H, TegCH<sub>2</sub>/AproH( $\delta$ )), 3.69–3.81

(m, 11H, TegCH<sub>2</sub>/ProH( $\delta$ )/AproH( $\delta$ )), 3.57–3.67 (m, 18H, TegCH<sub>2</sub>), 3.48–3.53 (m, 6H, TegCH<sub>2</sub>), 3.29 (s, 6H, TegCH<sub>3</sub>), 3.28 (s, 3H, TegCH<sub>3</sub>), 2.85–2.94 (m, 1H, AproH( $\beta$ )), 2.58–2.67 (m, 2H, ProH( $\beta$ )), 2.16–2.23 (m, 1H, AproH( $\beta$ )), 2.02–2.12 (m, 2H, ProH( $\beta$ )), 1.83–1.99 (m, 4H, ProH( $\gamma$ )) ppm; <sup>13</sup>C NMR (151 MHz, 25 °C, [D<sub>4</sub>]MeOD–D<sub>2</sub>O, 1 : 1 (v/v)):  $\delta = 172.5 + 173.1 + 173.2$  (Pro-CO/Apro-CO), 168.1 + 168.2 + 168.3 + 168.4 (MapaC(4)/Mapa-CO), 158.2 (Z-CO), 153.4 + 154.0 + 154.1 (MapaC(2)), 151.6 (MapaC(6)), 137.3 (PhC(1)), 129.4 (PhC(3)), 129.0 (PhC(4)), 128.4 (PhC(2)), 109.0 (MapaC(5)), 103.1 + 103.4 (MapaC(3)), 68.8 + 69.7 + 70.7 + 70.8 + 71.2 + 72.3 (TegC), 67.6 (Z-CH<sub>2</sub>), 63.4 + 63.5 (ProC( $\alpha$ )), 62.1 (AproC( $\alpha$ )), 59.0 (TegCH<sub>3</sub>), 53.9 (AproC( $\delta$ )), 50.0 (ProC( $\delta$ )), 49.1 (AproC( $\gamma$ )), 38.6 (AproC( $\beta$ )), 33.7 (ProC( $\beta$ )), 23.4 (ProC( $\gamma$ )) ppm; MS (ESI/TOF positive mode)  $m/z$  (%) 1287.4 (16%) [M + H]<sup>+</sup>, 1309.5 (100%) [M + Na]<sup>+</sup>, 1325.4 (50%) [M + K]<sup>+</sup>; MS (ESI/TOF negative mode)  $m/z$  (%) 1285.8 (50%) [M – H]<sup>–</sup>, 1321.9 (100%) [M + Cl]<sup>–</sup>; elemental analysis calcd (%) for C<sub>62</sub>H<sub>82</sub>N<sub>10</sub>O<sub>20</sub>·2H<sub>2</sub>O: C 56.27, H 6.55, N 10.58; found C 56.52, H 6.47, N 10.63.

**{cyclo[Apro-Mapa-(Pro-Mapa)<sub>2</sub>]Pda 2b.** Cyclopeptide **6** (335 mg, 0.26 mmol) was deprotected at the aminoproline residue by dissolving it in a mixture of dichloromethane–methanol, 1 : 1 (v/v) (10 mL). After the addition of 1 N aqueous HCl (1.2 equiv., 0.31 mL) and 10% palladium–charcoal (25 mg) the mixture was stirred under a hydrogen atmosphere at atmospheric pressure until full conversion, typically for 18 h. Afterwards, the catalyst was filtered off through a pad of celite and washed thoroughly with methanol. The filtrate was evaporated to dryness and the residue was used without further purification.

The deprotected cyclopeptide was dissolved in degassed DMF (20 mL). 2,2'-(1,3-Phenylene)diacetic acid (25 mg, 0.13 mmol), TBTU (99 mg, 0.31 mmol), and DIEA (0.14 mL, 0.80 mmol) were added and the mixture was stirred at 25 °C for 2 h. After evaporation of the solvent *in vacuo* the residue was purified by preparative HPLC. Yield 0.15 g (47%), colourless solid; m.p. 100–105 °C;  $[\alpha]_D^{22} = -211.1$  ( $c = 1.5$ , methanol); <sup>1</sup>H NMR (600 MHz, 25 °C, [D<sub>4</sub>]MeOD–D<sub>2</sub>O, 1 : 1 (v/v)):  $\delta = 7.09$ –7.19 (m, 9H, MapaH(5)/PdaH(4)/PdaH(5)/PdaH(6)), 6.89–7.01 (m, 7H, MapaH(3)/PdaH(2)), 5.65–5.74 (m, 4H, ProH( $\alpha$ )), 5.56–5.62 (m, 2H, AproH( $\alpha$ )), 4.36–4.44 (m, 2H, AproH( $\gamma$ )), 4.00–4.14 (m, 12H, TegCH<sub>2</sub>), 3.88–3.95 (m, 2H, AproH( $\delta$ )), 3.71–3.85 (m, 20H, TegCH<sub>2</sub>/ProH( $\delta$ )), 3.55–3.68 (m, 38H, TegCH<sub>2</sub>/AproH( $\delta$ )), 3.39–3.53 (m, 16H, TegCH<sub>2</sub>/Pda-CH<sub>2</sub>), 3.22–3.30 (m, 18H, TegCH<sub>3</sub>), 2.70–2.78 (m, 2H, AproH( $\beta$ )), 2.61–2.68 (m, 2H, ProH( $\beta$ )), 2.51–2.59 (m, 2H, ProH( $\beta$ )), 2.10–2.18 (m, 2H, AproH( $\beta$ )), 2.00–2.09 (m, 4H, ProH( $\beta$ )), 1.87–1.98 (m, 8H, ProH( $\gamma$ )) ppm; <sup>13</sup>C NMR (151 MHz, 25 °C, [D<sub>4</sub>]MeOD–D<sub>2</sub>O, 1 : 1 (v/v)):  $\delta = 172.4 + 173.0 + 174.7$  (Pro-CO/Apro-CO), 168.1 + 168.2 + 168.5 + 168.6 (MapaC(4)/Mapa-CO), 153.0 + 154.0 (MapaC(2)), 151.5 + 151.7 (MapaC(6)), 136.5 (PdaC(1)/PdaC(3)), 129.9 (PdaC(2)), 128.6 (PdaC(5)), 128.5 (PdaC(4)/PdaC(6)), 108.8 + 108.9 + 109.0 (MapaC(5)), 102.9 + 103.2 + 103.3 + 103.4 + 103.5 (MapaC(3)), 68.8 + 69.7 + 70.7 + 70.8 + 71.2 + 72.3 (TegC), 63.4 + 63.5 (ProC( $\alpha$ )), 62.0 (AproC( $\alpha$ )), 59.0 (TegCH<sub>3</sub>), 53.7 (AproC( $\delta$ )), 50.0 + 50.1 (ProC( $\delta$ )), 47.7 + 47.8 (AproC( $\gamma$ )), 43.2 (Pda-CH<sub>2</sub>), 37.9





(AproC( $\beta$ )), 33.6 (ProC( $\beta$ )), 23.5 (ProC( $\gamma$ )) ppm; MS (ESI/TOF positive mode)  $m/z$  (%) 1244.0 (42%)  $[M + H + Na]^{2+}$ , 1255.0 (100%)  $[M + 2Na]^{2+}$ , 2464.9 (9%)  $[M + H]^+$ , 2486.9 (72%)  $[M + Na]^+$ , 2502.8 (7%)  $[M + K]^+$ ; elemental analysis calcd (%) for  $C_{118}H_{158}N_{20}O_{38} \cdot 5H_2O$ : C 55.47, H 6.63, N 10.96; found C 55.47, H 6.55, N 10.91.

### Qualitative NMR spectroscopic binding studies

For the measurements in 50%  $D_2O$ - $CD_3OD$ , stock solutions of **2b** in  $CD_3OD$  (3.6 mM) and of NaI or  $Na_2SO_4$  in  $D_2O$  (7.2 mM) were prepared. After adding 250  $\mu L$  of a salt solution to 250  $\mu L$  of the receptor solution in an NMR tube, the tube was thoroughly shaken, and the  $^1H$  NMR spectrum was recorded (25  $^\circ C$ , 16 scans). For the measurements in 90%  $D_2O$ - $CD_3OD$ , stock solutions of **2b** in 20%  $CD_3OD$ - $D_2O$  (2.0 mM) and of the salts in  $D_2O$  (4.0 mM) were used. Equal volumes (500  $\mu L$ ) of the receptor solution and a salt solution were mixed in an NMR tube and the  $^1H$  NMR spectrum was recorded (25  $^\circ C$ , 128 scans). The spectra of pure receptor were obtained by mixing the respective stock solution of **2b** with the appropriate volume of  $D_2O$ .

### ITC titrations

The ITC titrations were carried out in water-methanol mixtures of varying compositions. Solvent mixtures were not degassed. The anionic substrates as their sodium salts ( $Na_2SO_4$ , NaI) and **2b** were weighed using an analytical precision balance, dissolved in known volumes of the respective solvent mixture, and loaded into the system for immediate analysis. Solutions involved in the same titration experiment were made up from the same batch of solvent mixture. For the concentrations of **2b** and the different salts used in the measurements, see ESI.†

A standard ITC experiment involved the titration of a solution of the salt into a solution of the receptor at 25  $^\circ C$  using 30 injections of 8  $\mu L$ , separated by an interval of 180 s, with the exception of the first injection, which was 2  $\mu L$ . Binding constants and enthalpies of binding were obtained by curve fitting of the titration data using the one-site binding model. Data processing involved initial optimisation of the raw thermogram with NITPIC<sup>18a</sup> and subsequent non-linear regression of the binding isotherm with Sedphat.<sup>18b,c</sup> The peak produced by the first injection was discarded prior to data processing.

## Acknowledgements

The support of this work by COST action CM1005 is kindly acknowledged. We also thank Prof. Dr S. Keller, Molecular Biophysics, Technische Universität Kaiserslautern for helpful discussions.

## Notes and references

1 M. Rekharsky and Y. Inoue, in *Supramolecular Chemistry: From Molecules to Nanomaterials*, ed. P. A. Gale and

- J. W. Steed, Wiley-VCH, Chichester, 2012, vol. 1, pp. 117–134.
- 2 (a) D. B. Smithrud, E. M. Sanford, I. Chao, S. B. Ferguson, D. R. Carcanague, J. D. Evanseck, K. N. Houk and F. Diederich, *Pure Appl. Chem.*, 1990, **62**, 2227–2236; (b) E. A. Meyer, R. K. Castellano and F. Diederich, *Angew. Chem., Int. Ed.*, 2003, **42**, 1210–1250; (c) F. Biedermann, M. Vendruscolo, O. A. Scherman, A. De Simone and W. M. Nau, *J. Am. Chem. Soc.*, 2013, **135**, 14879–14888; (d) F. Biedermann, W. M. Nau and H.-J. Schneider, *Angew. Chem., Int. Ed.*, 2014, **53**, DOI: 10.1002/anie.201310958.
- 3 (a) W. Blokzijl and J. B. F. N. Engberts, *Angew. Chem., Int. Ed. Engl.*, 1993, **32**, 1545–1579; (b) D. Chandler, *Nature*, 2005, **437**, 640–647.
- 4 E. Klein, Y. Ferrand, N. P. Barwell and A. P. Davis, *Angew. Chem., Int. Ed.*, 2008, **47**, 2693–2696.
- 5 A. Shokri and S. R. Kass, *Chem. Commun.*, 2013, **49**, 11674–11676.
- 6 (a) A. Bianchi, K. Bowman-James and E. García-España, *Supramolecular Chemistry of Anions*, Wiley-VCH, New York, 1997; (b) J. L. Sessler, P. A. Gale and W.-S. Cho, *Anion Receptor Chemistry*, RSC, Cambridge, 2006; (c) A. Bianchi, K. Bowman-James and E. García-España, *Anion Coordination Chemistry*, Wiley-VCH, Weinheim, 2012.
- 7 (a) B. R. Linton, M. S. Goodman, E. Fan, S. A. van Arman and A. D. Hamilton, *J. Org. Chem.*, 2001, **66**, 7313–7319; (b) I. E. D. Vega, S. Camiolo, P. A. Gale, M. B. Hursthouse and M. E. Light, *Chem. Commun.*, 2003, 1686–1687; (c) R. J. Fitzmaurice, F. Gaggini, N. Srinivasan and J. D. Kilburn, *Org. Biomol. Chem.*, 2007, **5**, 1706–1714; (d) C. Caltagirone, J. R. Hiscock, M. B. Hursthouse, M. E. Light and P. A. Gale, *Chem. – Eur. J.*, 2008, **14**, 10236–10243; (e) P. A. Gale, J. R. Hiscock, C. Z. Jie, M. B. Hursthouse and M. E. Light, *Chem. Sci.*, 2010, **1**, 215–220; V. J. Dungan, H. T. Ngo, P. G. Young and K. A. Jolliffe, *Chem. Commun.*, 2013, **49**, 264–266; (f) D. Curiel, G. Sánchez, C. Ramirez de Arellano, A. Tárraga and P. Molina, *Org. Biomol. Chem.*, 2012, **10**, 1896–1904; (g) G. Sanchez, A. Espinosa, D. Curiel, A. Tárraga and P. Molina, *J. Org. Chem.*, 2013, **78**, 9725–9737; (h) R. B. P. Elmes, K. K. Y. Yuen and K. A. Jolliffe, *Chem. – Eur. J.*, 2014, **20**, 7373–7380.
- 8 (a) S. Kubik, R. Kirchner, D. Nolting and J. Seidel, *J. Am. Chem. Soc.*, 2002, **124**, 12752–12760; (b) S. Otto and S. Kubik, *J. Am. Chem. Soc.*, 2003, **125**, 7804–7805; (c) C. Reyheller, B. P. Hay and S. Kubik, *New J. Chem.*, 2007, **31**, 2095–2102; (d) C. Reyheller and S. Kubik, *Org. Lett.*, 2007, **9**, 5271–5274; (e) Z. Rodriguez-Docampo, S. I. Pascu, S. Kubik and S. Otto, *J. Am. Chem. Soc.*, 2006, **128**, 11206–11210; (f) Z. Rodriguez-Docampo, E. Eugenieva-Ilieva, C. Reyheller, A. Belenguer, S. Kubik and S. Otto, *Chem. Commun.*, 2011, **47**, 9798–9800.
- 9 (a) S. Kubik, R. Goddard, R. Kirchner, D. Nolting and J. Seidel, *Angew. Chem., Int. Ed.*, 2001, **40**, 2648–2651; (b) S. Kubik and R. Goddard, *Proc. Natl. Acad. Sci. U. S. A.*, 2002, **99**, 5127–5132.



- 10 (a) G. V. Oshovsky, D. N. Reinhoudt and W. Verboom, *Angew. Chem., Int. Ed.*, 2007, **46**, 2366–2393; (b) M. T. Albelda, J. C. Frías, E. García-España and H.-J. Schneider, *Chem. Soc. Rev.*, 2012, **41**, 3859–3877; (c) C. Warwick, A. Guerreiro and A. Soares, *Biosens. Bioelectron.*, 2013, **41**, 1–11.
- 11 (a) A.-S. Chauvin, S. Comby, B. Song, C. D. B. Vandevyver and J.-C. Bünzli, *Chem.–Eur. J.*, 2008, **14**, 1726–1739; (b) W. Q. Ong, H. Zhao, Z. Du, J. Z. Y. Yeh, C. Ren, L. Z. W. Tan, K. Zhang and H. Zeng, *Chem. Commun.*, 2011, **47**, 6416–6418.
- 12 A. Fisher, A. Mann, V. Verma, N. Thomas, R. K. Mishra and R. L. Johnson, *J. Med. Chem.*, 2006, **49**, 307–317.
- 13 T. Fiehn, R. Goddard, R. W. Seidel and S. Kubik, *Chem. – Eur. J.*, 2010, **16**, 7241–7255.
- 14 F. P. Schmidtchen, in *Analytical Methods in Supramolecular Chemistry*, ed. C. A. Schalley, Wiley-VCH, Weinheim, 2007, pp. 55–78.
- 15 Y. Marcus, *Ion Properties*, Marcel Dekker, New York, 1997.
- 16 (a) G. Hefter, Y. Marcus and W. E. Waghorne, *Chem. Rev.*, 2002, **102**, 2773–2836; (b) Y. Marcus, *Chem. Rev.*, 2007, **107**, 3880–3897.
- 17 (a) D. H. Williams, E. Stephens and M. Zhou, *Chem. Commun.*, 2003, 1973–1976; (b) D. H. Williams and M. S. Westwell, *Chem. Soc. Rev.*, 1998, **27**, 57–63.
- 18 (a) S. Keller, C. Vargas, H. Zhao, G. Piszczek, C. A. Brautigam and P. Schuck, *Anal. Chem.*, 2012, **84**, 5066–5073; (b) J. C. D. Houtman, P. H. Brown, B. Bowden, H. Yamaguchi, E. Appella, L. E. Samelson and P. Schuck, *Protein Sci.*, 2007, **16**, 30–42; (c) <http://www.analyticalultra-centrifugation.com/sedphat/download.htm>.
- 19 (a) J. Svec, M. Dusek, K. Fejfarova, P. Stacko, P. Klán, A. E. Kaifer, W. Li, E. Hudeckova and V. Sindelar, *Chem. – Eur. J.*, 2011, **17**, 5605–5612; (b) M. Lisbjerg, B. M. Jessen, B. Rasmussen, B. E. Nielsen, A. Ø. Madsen and M. Pittelkow, *Chem. Sci.*, 2014, **5**, 2647–2650.

