



Cite this: *RSC Adv.*, 2018, 8, 39106

Effect of low-temperature plasma treatment of electrospun polycaprolactone fibrous scaffolds on calcium carbonate mineralisation†

Anna A. Ivanova,^a Dina S. Syromotina,^a Svetlana N. Shkarina,^a Roman Shkarin,^{bc} Angelica Cecilia,^d Venera Weinhardt,^{bde} Tilo Baumbach,^{bd} Mariia S. Saveleva,^{fb} Dmitry A. Gorin,^f Timothy E. L. Douglas,^{9h} Bogdan V. Parakhonskiy,^{ib} Andre G. Skirtach,ⁱ Pieter Cools,^{ib} Nathalie De Geyter,ⁱ Rino Morent,ⁱ C. Oehr,^j Maria A. Surmeneva,^{ib} and Roman A. Surmenev^{ib}*^a

This article reports on a study of the mineralisation behaviour of CaCO₃ deposited on electrospun poly(ε-caprolactone) (PCL) scaffolds preliminarily treated with low-temperature plasma. This work was aimed at developing an approach that improves the wettability and permeability of PCL scaffolds in order to obtain a superior composite coated with highly porous CaCO₃, which is a prerequisite for biomedical scaffolds used for drug delivery. Since PCL is a synthetic polymer that lacks functional groups, plasma processing of PCL scaffolds in O₂, NH₃, and Ar atmospheres enables introduction of highly reactive chemical groups, which influence the interaction between organic and inorganic phases and govern the nucleation, crystal growth, particle morphology, and phase composition of the CaCO₃ coating. Our studies showed that the plasma treatment induced the formation of O- and N-containing polar functional groups on the scaffold surface, which caused an increase in the PCL surface hydrophilicity. Mineralisation of the PCL scaffolds was performed by inducing precipitation of CaCO₃ particles on the surface of polymer fibres from a mixture of CaCl₂- and Na₂CO₃-saturated solutions. The presence of highly porous vaterite and nonporous calcite crystal phases in the obtained coating was established. Our findings confirmed that preferential growth of the vaterite phase occurred in the O₂-plasma-treated PCL scaffold and that the coating formed on this scaffold was smoother and more homogenous than those formed on the untreated PCL scaffold and the Ar- and NH₃-plasma-treated PCL scaffolds. A more detailed three-dimensional assessment of the penetration depth of CaCO₃ into the PCL scaffold was performed by high-resolution micro-computed tomography. The assessment revealed that O₂-plasma treatment of the PCL scaffold caused CaCO₃ to nucleate and precipitate much deeper inside the porous structure. From our findings, we conclude that O₂-plasma treatment is preferable for PCL scaffold surface modification from the viewpoint of use of the PCL/CaCO₃ composite as a drug delivery platform for tissue engineering.

Received 4th September 2018
 Accepted 14th November 2018

DOI: 10.1039/c8ra07386d

rsc.li/rsc-advances

Introduction

One of the most effective strategies for bone regeneration is the use of composite scaffolds that mimic the structure and biological features of extracellular matrices (ECM) of bone. Porous

electrospun scaffolds offer significant advantages over various other candidate materials, mainly because of their high surface-to-volume ratios, high porosity, and spatial interconnectivity, which are beneficial for cell migration, drug loading, and nutrient distribution. A wide range of polymers can be employed

^aPhysical Materials Science and Composite Materials Centre, Research School of Chemistry & Applied Biomedical Sciences, National Research Tomsk Polytechnic University, 634050 Tomsk, Russia. E-mail: rsurmenev@gmail.com; Tel: +7 903 953 09 69

^bLaboratory for Applications of Synchrotron Radiation, Karlsruhe Institute of Technology, Eggenstein-Leopoldshafen, Germany

^cInstitute for Applied Computer Science, Karlsruhe Institute of Technology, Karlsruhe, Germany

^dInstitute for Photon Science and Synchrotron Radiation, Karlsruhe Institute of Technology, Eggenstein-Leopoldshafen, Germany

^eCentre for Organismal Studies, University of Heidelberg, Heidelberg, Germany

^fSkolkovo Institute of Science and Technology, 3 Nobelya Str., Moscow 121205, Russian Federation

^gUK Engineering Department, Lancaster University, UK

^hMaterials Science Institute (MSI), Lancaster University, UK

ⁱDepartment of Molecular Biotechnology, Faculty of Bioscience Engineering, Ghent University, Coupure Links 653, Ghent 9000, Belgium

^jFraunhofer IGB, Stuttgart, Germany

† Electronic supplementary information (ESI) available. See DOI: 10.1039/c8ra07386d



for scaffold fabrication, such as poly(lactic acid) (PLA),^{1–4} poly(lactic-co-glycolic acid) (PLGA),^{1,5,6} and poly(ϵ -caprolactone) (PCL).^{1,7–11} PCL is beneficial for tissue regeneration and drug delivery applications on account of its biocompatibility, processability, degradability, and mechanical properties. However, the surface wettability and osteoconductivity of PCL materials require improvement given the low cell attachment and proliferation on untreated PCL scaffolds.^{7,8} Several surface modification techniques such as chemical treatment, film deposition, blending, ion beam radiation, and plasma treatment have been developed to overcome these shortcomings.^{2,3,7,9,12} The most promising techniques are plasma treatment and biomineralisation of polymer scaffolds.^{12–14} Plasma treatment is an effective surface modification method for improving the surface and biological properties of PCL materials without altering the properties of the bulk. Plasma treatment is a non-solvent process that involves the use of a smaller amount of chemical reagents and facilitates changes in the chemical composition, wettability, surface energy, refractive index, hardness, chemical inertness, and biocompatibility of a PCL material.¹⁴ The weak chemical bonds of PCL are replaced with highly reactive amine, carboxy, hydroxy, and aldehyde groups by the use of glow discharges of non-deposition gases such as NH₃, O₂, and Ar.^{15–17} A previous study reported that these chemical groups could act as binding sites for cell adhesion and protein adsorption.¹³ Because of the presence of functional groups, plasma-modified polymer surfaces have applicability to biomolecular immobilisation.^{18,19} Introduction of inorganic particles into the polymer scaffold and deposition of a thin film on the scaffold surface to achieve superior features for bone tissue substitution are highly promising approaches for biomineralisation of the scaffold surface or bulk. Various inorganic species have been used for this purpose, such as hydroxyapatite (HAp), bioactive glass, CaCO₃, and TiO₂.^{20,21} Among these species, CaCO₃ is advantageous because of its biocompatibility, simple synthesis method, and straightforward decomposition conditions. CaCO₃ has three anhydrous crystallographic polymorphs: vaterite, aragonite, and calcite. Many approaches have been developed to control the morphology and polymorphs of CaCO₃.^{22–27} Specifically, vaterite is the least stable, and thus the most challenging, phase of CaCO₃, which possesses an orthorhombic or hexagonal crystal structure. Savelyeva *et al.* studied the deposition of porous CaCO₃ coatings on electrospun PCL fibres;⁷ they obtained various structures and phase compositions of the CaCO₃ coatings by varying the growth conditions (incubation time and ultrasonic treatment). The vaterite-calcite transformation in CaCO₃ was induced by an increase in the number of consecutive treatments, which could be explained by the Ostwald ripening process. Their study suggested that as the size of the vaterite crystallites increased beyond a critical value, the process of recrystallisation of vaterite to calcite occurred. However, Andreassen showed that spherical and polycrystalline particles of vaterite precipitated from solution and grew by a spherulitic growth mechanism, and not by aggregation of nanosized precursor crystals.²² This work suggested that the transformation of vaterite to calcite was not a solid-state transformation but a surface-controlled process.²² This implies that the dissolution of vaterite and the nucleation of

calcite are two parallel processes. Thus, three stages of CaCO₃ formation are differentiated: occurrence and disappearance of an unstable amorphous CaCO₃ phase, crystallisation and dissolution of the metastable vaterite phase, and precipitation of the thermodynamically stable calcite phase.^{22,25–27} Vaterite CaCO₃ usually occurs in the form of highly porous spherical particles, which are beneficial from the viewpoint of bonding of the scaffold with bone tissue and for the use of the scaffold as a drug delivery system. Saveleva *et al.* recently tested a PCL/CaCO₃ scaffold loaded with tannic acid as a model substance *in vivo* and demonstrated beneficial effects of the implanted scaffold on the stabilisation of blood vessels in rats by the release of loaded drugs, which, in turn, was induced by the recrystallisation of vaterite to calcite.²⁸ It was also shown that the introduction of vaterite particles as a filler or coating onto polymer scaffolds induced the biomimetic precipitation of HAp from simulated body fluid.^{21,29}

A number of studies demonstrated that the nucleation and growth processes of CaCO₃ crystals are affected by the micro-environment.^{30,31} As described above, plasma treatment can change the surface properties of PCL fibres. It is well established that plasma treatment causes activation of the surface layer of the polymer scaffold and the formation of some dangling bonds or free radicals,^{15–17} which may attract oxygen or moisture when the plasma-treated polymer scaffolds are exposed to air.³² To the best of our knowledge, no data are yet available on the formation of a CaCO₃ coating on plasma-treated PCL and the correlation of CaCO₃ film properties with the gas atmosphere of the plasma discharge. In the present study, therefore, we demonstrate that PCL/CaCO₃ scaffolds with modified surface properties can be developed by combining plasma treatment of PCL with wet precipitation methods. The effect of plasma treatment on the CaCO₃ mineralisation process is investigated by several analytical techniques, including X-ray diffraction (XRD), scanning electron microscopy (SEM), and X-ray photoelectron spectroscopy (XPS), and high-resolution micro-computed tomography (μ CT).

Experimental section

Electrospinning of PCL scaffolds

Micro-fibrous scaffolds were produced using the electrospinning instrument at the National Research Tomsk Polytechnic University, Russia.³³ PCL ($M_n = 80\,000\text{ g mol}^{-1}$, Sigma-Aldrich, USA) was dissolved in chloroform (CHCl₃) at a concentration of 9% (w/v). The solutions were loaded into a 10 mL plastic syringe with a stainless-steel needle (diameter: 0.58 mm). The flow rate of the solution was 3.6 mL h⁻¹. The needle was connected to a high-voltage power supply, which generated a voltage of 8 kV. Randomly oriented fibres were deposited on a grounded drum collector (rotation speed: 600 rpm) located at a distance of 8 cm from the needle tip.

Plasma treatment of PCL scaffolds

Plasma treatment of the PCL scaffolds was performed in a dielectric barrier discharge plasma system in a direct mode



(Fraunhofer Institute for Interfacial Engineering and Biotechnology, Germany) by use of an RF power generator (13.56 MHz). Different working gases were used for processing the PCL scaffolds with a constant gas flow of $30 \text{ cm}^3 \text{ min}^{-1}$: 99.99% O_2 , 99.99% Ar, and 99.99% NH_3 . All plasma treatments were performed for 120 s under a pressure of 30 Pa with applied discharge powers of 30 W and 50 W for Ar plasma and O_2 and NH_3 plasmas, respectively. Electrospun fibre mats $2 \times 2 \text{ cm}^2$ in size were treated with plasma in each of the three gas atmospheres and then cut into 8 samples $0.5 \times 1 \text{ cm}^2$ in size each for further investigation and mineralisation.

Enrichment of PCL scaffolds with CaCO_3

The procedure for the formation of CaCO_3 on the PCL scaffolds was similar to that described elsewhere.⁷ Briefly, CaCO_3 particles were crystallised on the surface of polymer fibres from a mixture of 1 M- CaCl_2 -saturated and 1 M- Na_2CO_3 -saturated solutions. The CaCl_2 and Na_2CO_3 solutions were prepared using calcium chloride dihydrate ($\text{CaCl}_2 \cdot 2\text{H}_2\text{O}$; Sigma-Aldrich Chemie, Germany) and sodium carbonate (Na_2CO_3 ; Sigma-Aldrich Chemie, Germany), respectively. First, the PCL scaffold samples ($0.5 \times 1 \text{ cm}^2$) were treated with 1 mL of CaCl_2 solution in an ultrasonic bath until complete wetting was achieved. Complete wetting of scaffolds that were pretreated with the O_2 plasma was achieved immediately, whereas that of the other scaffolds was achieved in about 10 min. Subsequently, 1 mL of the Na_2CO_3 solution was added to the system upon ultrasonication, after which the system was subjected to ultrasound for 30 s. Finally, the samples immersed in the solution were kept out for 60 s to complete the crystallisation process and washed twice with deionised (DI) water. The mineralisation of the PCL scaffolds was performed twice and completed with drying of the samples at 40–45 °C for 30–40 min.

Characterisation of scaffolds

Scanning electron microscopy. The morphology of the PCL/ CaCO_3 scaffolds was studied using a scanning electron microscope (MIRA II LMU, Tescan, Czech Republic) at an operating voltage of 30 kV.

Wettability. Before the mineralisation process, the wettability of all the scaffolds was measured. Three drops of Milli-Q water (2 μL) were released at various positions on the surface of each scaffold. The shapes of the drops were recorded using CoolingTech Microscope, and their contact angles were calculated with ImageJ software.

X-ray photoelectron spectroscopy. XPS of the plasma-treated samples was performed using a PHI VersaProbe II XPS system with a monochromatic $\text{AlK}\alpha$ beam ($h\nu = 1486.6 \text{ eV}$) operating at 51.4 W. All measurements were performed in a vacuum of at least 10^{-6} Pa, and the photoelectrons were detected with a hemispherical analyser positioned at an angle of 45° with respect to the normal of the sample surface. Survey scans and high-resolution C1s and N1s spectra were recorded with pass energies of 187.8 eV and 23.5 eV, respectively. CasaXPS software was used to fit the curves of the high-resolution peaks. A linear-type background was subtracted and Gaussian-Lorentzian peak

components were fitted to the high-resolution spectra. The hydrocarbon component of the C1s spectrum (285.0 eV) was used to calibrate the energy scale.

X-ray diffraction. XRD was used to determine the crystallographic structures of the CaCO_3 particles in the scaffolds. XRD analysis was performed using a Shimadzu XRD-6000 (Japan) X-ray diffractometer by using $\text{CuK}\alpha$ radiation ($\lambda = 0.154 \text{ nm}$) in a 2θ range of 10–70° with a step size of 0.03° and a scanning rate of 2° in $2\theta \text{ min}^{-1}$. The diffractometer was operated at 40 kV and 30 mA.

Synchrotron μCT imaging and data analysis. For the μCT analysis, samples of the untreated PCL/ CaCO_3 scaffold and the PCL/ CaCO_3 scaffold subjected to O_2 -plasma treatment were chosen. A μCT system installed at a bending magnet source at the Institute for Photon Science and Synchrotron Radiation, Karlsruhe Institute of Technology (KIT, Karlsruhe, Germany), was used for three-dimensional (3D) non-destructive imaging.³⁴ The white beam (broad energy spectrum: 1.5–40 keV) was used for the experiment. The imaging setup consisted of a detector composed of a 200 μm -thick $\text{Lu}_3\text{Al}_5\text{O}_{12}$ scintillator; an Optique Peter white beam microscope with a magnification of 10 \times ; and a pco.Dimax CMOS camera having 2016 \times 2016 pixels with a physical pixel size of 11 μm , which corresponded to an effective pixel size of 1.1 μm . For each tomography measurement, 6000 projections—each with an exposure time of 25 ms—were recorded. The distance between the sample and the detector (propagation distance) was set to 25 mm. The beam fluctuations, noise from the detector, cracks, and imperfections of the scintillator were filtered out from the projections by the use of reference images without a sample. Tomographic reconstructions were performed using the filtered back-projection algorithm implemented in the UFO framework developed at KIT.³⁵

The reconstructed datasets were filtered using a median filter with a radius of 1.8 μm in a slice-by-slice manner. Then, each slice was segmented using entropy-based and Otsu thresholding algorithms implemented with the NumPy and scikit-image packages of the Python programming language.³⁶ The segmentation process generates binary datasets in which only the material has non-zero values. Then, the segmented slices were analysed using the Quanfima package,³⁷ mainly by means of the connected component algorithm provided by the scikit-image package.³⁸ The size and orientation of the fibres, the porosity of the PCL/ CaCO_3 scaffold, and the ratio of the CaCO_3 volume to the total volume of the PCL scaffold were calculated for each sample. The 3D visualisation was performed using the Amira 5.4.1 software (FEI Visualization Sciences Group). The Matplotlib package was used for plotting 2D charts.³⁹

Results and discussion

Previous studies demonstrated that plasma treatment of PCL samples induced formation of O-containing and N-containing polar functional groups on the surface, which caused an increase in the surface energy and thus enhanced the hydrophilic properties of the samples.^{12–19} This is because polymer



mineralisation reactions between organic and inorganic phases are significant and can control the crystal growth, particle morphology, and spatial arrangement of CaCO_3 agglomerates. Liu *et al.* and Ma *et al.* studied the effect of grafting of different functional groups on substrates on the crystallisation process of CaCO_3 .^{23,24} As changes in the functional groups and wettability of the surface are expected to affect the mineralisation behaviour of CaCO_3 , we used XPS and contact angle measurements to characterise the surface of PCL samples treated with plasma in different atmospheres prior to enrichment with CaCO_3 .

Surface properties of electrospun PCL scaffolds before and after plasma treatment

The wettability of PCL scaffold surfaces before and after plasma treatment in O_2 , NH_3 , and Ar atmospheres was evaluated by measuring the contact angle of DI water. The change in the surface hydrophobicity of the plasma-treated samples is shown in Fig. 1.

The untreated PCL scaffold was hydrophobic, with a water contact angle of $123^\circ \pm 10^\circ$. After plasma treatment, depending on the gas atmosphere used in the plasma treatment, the PCL surface became more hydrophilic. The DI water contact angles for the PCL scaffolds treated in the NH_3 - and Ar-plasma atmospheres decreased from $123^\circ \pm 10^\circ$ to $102^\circ \pm 5^\circ$ and to $69^\circ \pm 10^\circ$, respectively. The lowest contact angle was observed for the PCL scaffold treated with O_2 plasma ($30^\circ \pm 6^\circ$). The decrease in the contact angle of a water drop is considered to be referred mainly to the enhancement of the total surface energy of the fiber substrate as well as the generation of new binding states by the plasma treatment.^{40,41} The obtained data indicate that the plasma treatment with oxygen considerably increases the formation of polar species on the PCL surface. These findings are consistent with previous studies.^{32,42} These results obviously indicate that the direct plasma treatment provides an effective improvement of surface hydrophilicity that is essential for deep penetration of reagents for deposition of CaCO_3 .

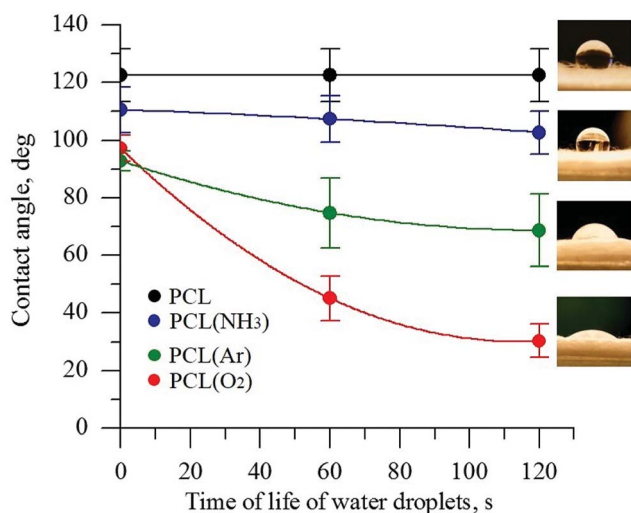


Fig. 1 Contact angle of PCL scaffolds before and after plasma treatment under different atmospheres.

All the untreated and plasma-treated PCL scaffolds were further analysed by XPS, as shown in Fig. 2a. From the XPS survey spectra, we calculated the atomic ratios (at%) of C, O, and N on the surface of the PCL scaffolds (Table 1). The surface of the untreated PCL scaffold sample contained 81.5 at% C and 18.5 at% O. This C content was slightly higher than that expected for PCL ($\text{C}_6\text{H}_{10}\text{O}_2$), because of the presence of adventitious hydrocarbon contaminants, which is inevitable in a laboratory environment.

After Ar- and O_2 -plasma treatments, the O content of the PCL surfaces increased to 23.0 at% and 24.6 at%, respectively. However, after the NH_3 -plasma treatment, the O content of the PCL surface decreased slightly to 17.5 at% (from 18.5 at%, *i.e.* the O content of the untreated PCL scaffold). This result can be explained by the dissociation of NH_3 in the plasma into hydrogen atoms and its reaction with the O on the polymer surface.⁴³ After NH_3 -plasma treatment, the N1s peak was observed in the XPS survey spectra, which indicates the incorporation of 1.25 at% N into the polymer surface. Higher-resolution spectra of the C1s and N1s regions are shown in Fig. 2b. The C1s line can be resolved into three peaks, which reflect the local environments of the carbon atoms. For instance, the peak at 285 eV corresponds to the hydrocarbon environment (the C1 group), that at 285.9 eV corresponds to the carbon monoxide environment (the C2 group), and that at 289.1 eV corresponds to other carbon oxide environments (the C3 group). The N1s curve of the PCL sample treated with NH_3 plasma was fitted using three peaks, two of which could be assigned to the amine (N1, 398.9 eV) and imide (N2, 400.5 eV) groups.^{32,44} The third peak, located at a higher binding energy (403.8 eV), was ascribed to oxidised nitrogen species (N3).

While the XPS spectra of all the studied PCL scaffolds were similar in terms of the overall content, they differed in terms of the proportions of carbon environments. After O_2 -plasma treatment, there was an evident increase in the amount of C3 groups, which was attributed to the oxidation of the PCL surface. A previous study showed that these oxygen-containing groups improve surface hydrophilicity.⁴⁵ The XPS spectra of the samples treated with Ar plasma also showed higher amounts of the C2 and C3 groups in comparison to the untreated sample. There are two possible explanations for this observation. Either the plasma chamber with Ar gas contains a very small amount of oxygen or highly active groups are formed in the Ar plasma, which subsequently react with oxygen when exposed to air.⁴⁶

Influence of plasma treatment on deposited CaCO_3 -based coating

Calcium carbonate enriched PCL scaffolds without and after plasma treatment are shown in Fig. 3. There are visible differences in the particle dispersion and CaCO_3 coating homogeneity on the PCL surface between the plasma-treated and untreated scaffolds. For the untreated PCL scaffold and the sample exposed under Ar atmosphere many CaCO_3 agglomerates protrude out (the areas enclosed by a circle in Fig. 3). For the coating deposited on the O_2 -plasma treated PCL a rather



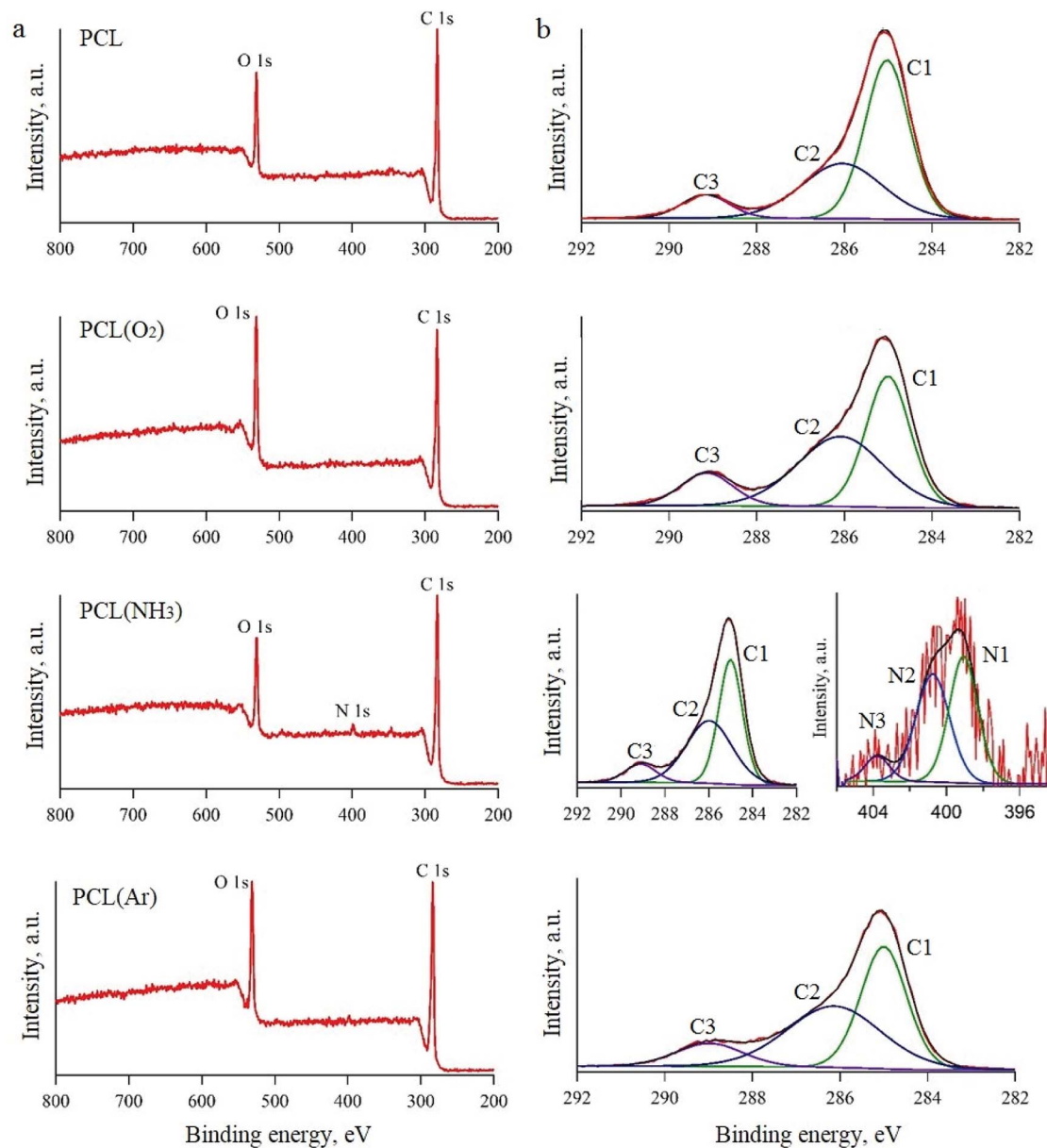


Fig. 2 XPS spectra of PCL scaffolds before and after plasma treatment: survey spectra (a) and high-resolution spectra (b).

Table 1 Surface elemental compositions derived from XPS survey spectra

| Processing condition | Atomic percentage | | | C/O ratio |
|-----------------------|-------------------|------|------|-----------|
| | C1s | O1s | N1s | |
| PCL | 81.5 | 18.5 | | 4.4 |
| PCL(O ₂) | 75.4 | 24.6 | | 3.1 |
| PCL(NH ₃) | 81.1 | 17.5 | 1.25 | 4.6 |
| PCL(Ar) | 77.1 | 23.0 | | 3.4 |

smooth and homogeneous surface is observed. The CaCO₃ coating consists of agglomerates of spherical porous CaCO₃ microparticles referred to vaterite (white arrows in Fig. 3). A clear difference in the particles morphology of the CaCO₃

coating deposited on the PCL scaffold treated in the NH₃-plasma atmosphere compared with other samples is displayed. It seems that the coating on this sample consists of cubic particles (black arrows in Fig. 3), which indicate the presence of the calcite phase.

The XRD spectra of the untreated and plasma-treated PCL scaffolds after mineralisation are shown in Fig. 4. The deposited coating is composed of the vaterite and calcite phases. The diffractograms show three diffraction peaks assigned to the (112), (114), and (300) planes of the vaterite phase (ICDD card no. 86-0174) and one peak assigned to the (104) plane of the calcite phase resolved at 29° (ICDD card no. 86-0174). The presence of calcite is established in all the studied samples. The observed XRD peaks are quite broad, which leads to the conclusion that the CaCO₃ coatings deposited on the surface of



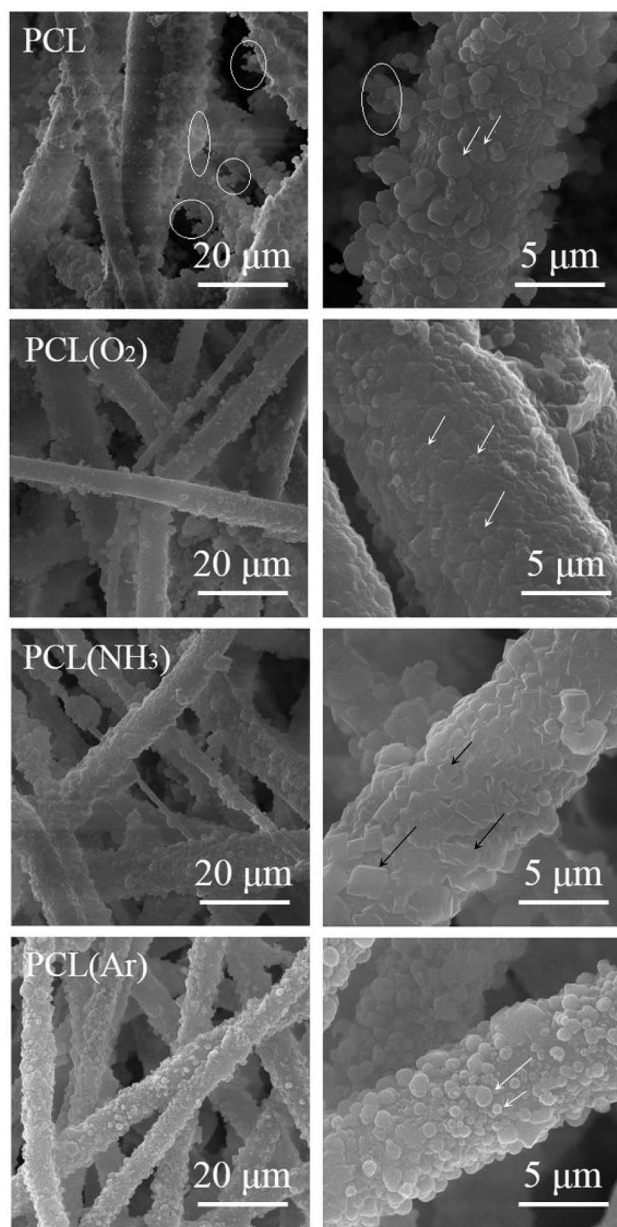


Fig. 3 SEM images of PCL/CaCO₃ scaffolds before and after plasma treatment at different magnifications.

the PCL scaffolds are nanocrystalline. The integrated intensities of vaterite and calcite were measured from the corresponding reflections of the X-ray diffractograms by means of IGOR Pro software. The ratio of the integrated intensity of the calcite phase (I_c) to the total integrated intensity (I_{Σ}) represents the relative proportions of these two phases in the deposited coatings. The lower the I_c/I_{Σ} ratio, the higher is the number of vaterite crystals in the coating. The results showed that the vaterite phase grew more preferentially in the O₂-plasma-treated PCL scaffold sample than in the untreated and Ar- and NH₃-plasma-treated PCL scaffold samples.

The differences in the CaCO₃ coating morphology and phase composition observed in our study are attributed to the different effects of the three plasma treatments of the PCL

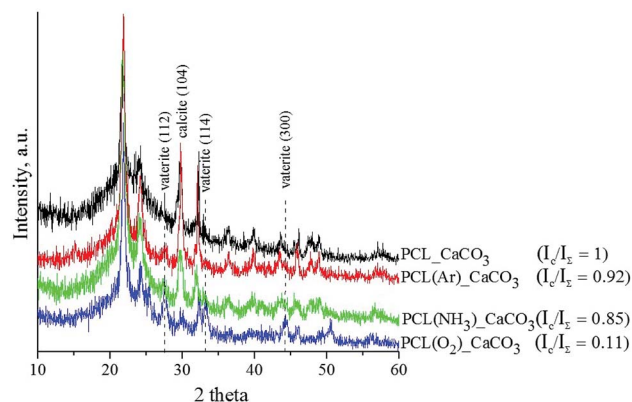


Fig. 4 XRD spectra of PCL/CaCO₃ scaffolds before and after plasma treatment. The ratio of the integrated intensity of the calcite phase (I_c) to the total integrated intensity (I_{Σ}) represents the relative proportion of the calcite phase in the deposited coatings.

scaffolds. We assume that the O₂-plasma treatment leads to the formation of a large number of active growth sites for the nucleation of vaterite particles, which results in a more homogenous and smoother coating morphology than that achieved with the Ar- and NH₃-plasma treatments. In the NH₃ atmosphere, the PCL surface becomes saturated with amino groups, which induce crystallisation of CaCO₃ into calcite. Ma *et al.* reported that the interaction between $-\text{NH}_3^+$ groups in a chitin film and CO_3^{2-} affects the nucleation of CaCO₃ and leads to the irregular formation of calcite.²⁴

The homogenous CaCO₃ coating deposited on the O₂-plasma-treated PCL scaffold sample showed the best results in terms of wettability and vaterite phase content. Thus, this sample has the highest potential for bone engineering. Therefore, only the PCL/CaCO₃ scaffolds treated with O₂ plasma were used for further analysis.

Synchrotron μ CT imaging of PCL/CaCO₃ scaffolds after O₂-plasma treatment

We used synchrotron μ CT for a complementary 3D analysis of the internal characteristics of the scaffolds and the influence of O₂ plasma on the calcification process of the fibre structure. Fig. 5a and b shows 3D renderings of the reconstructed volumes from the μ CT data. The PCL fibres and CaCO₃ particles are rendered in blue and red, respectively. To obtain a more representative view, regions of interest (ROI) with a 3D area of $550 \times 440 \times 880 \mu\text{m}^3$ and magnified regions with a 3D area of $100 \times 100 \times 100 \mu\text{m}^3$ were extracted. Reconstructed volumes enable visualisation of the CaCO₃ present within the scaffold at different depths (Fig. 5c and d, 3D rendering of CaCO₃ only). Spatial arrangement of the CaCO₃ agglomerates in the 3D reconstructions corresponds to the plasma propagation direction. The O₂-plasma-treated scaffold shows larger agglomerates and deeper penetration of CaCO₃ than does the untreated PCL scaffold (see Fig. 5d).

From the high-resolution 3D volume, we calculated the PCL fibre diameter, ratio of the CaCO₃ volume to the total sample volume, and porosity for both the PCL/CaCO₃ samples (ESI Fig. S1†). For both the samples, the fibre diameters are found to



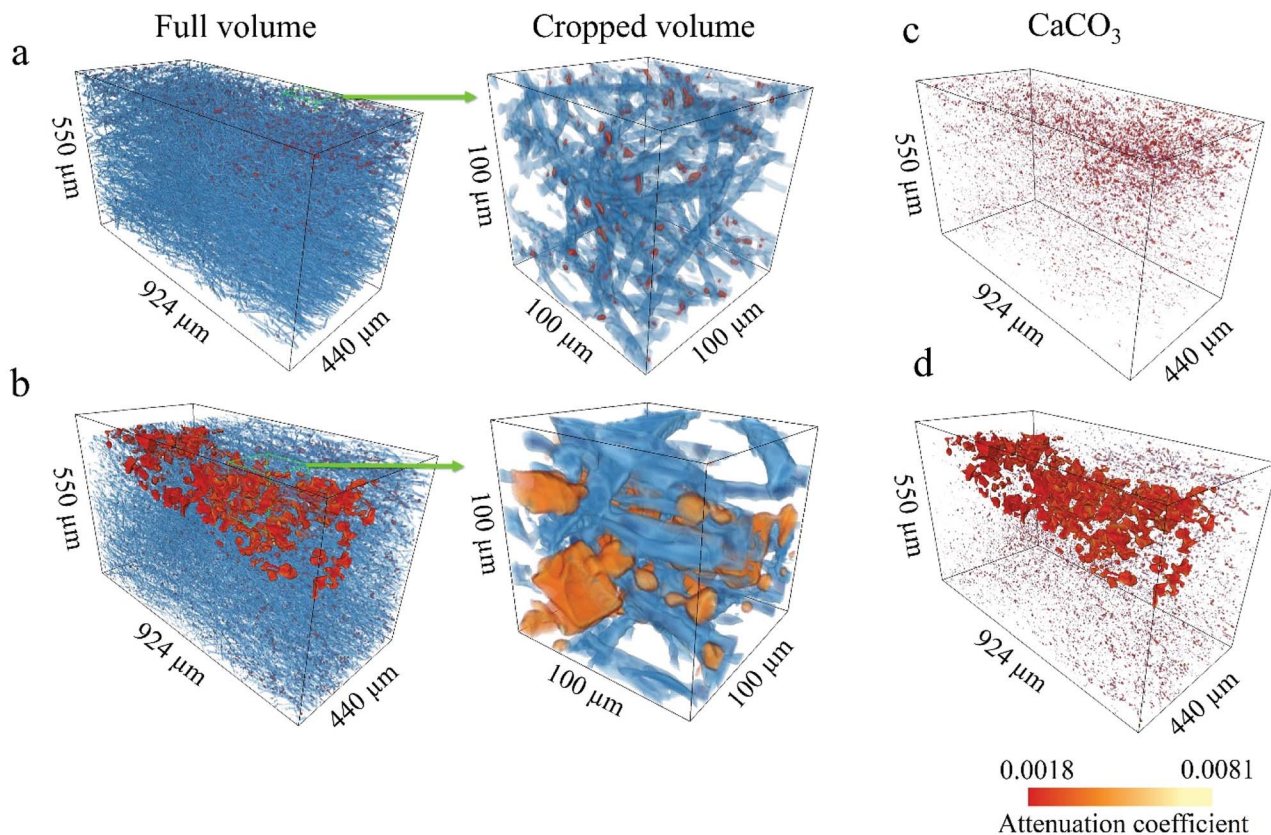


Fig. 5 X-ray- μ CT-based visualisation of full and cropped volumes of untreated PCL/CaCO₃ scaffolds (a and c) and PCL/CaCO₃ scaffolds after O₂-plasma treatment (b and d) and CaCO₃ distribution within the volume of 3D scaffolds (c and d). The polymer and inorganic phases are shown in blue and red-yellow colours, respectively. The colour bar represents the X-ray linear attenuation coefficient in μm^{-1} .

range from 1 μm to 15 μm , with very similar distributions. Pie charts show that the predominant fibre diameter in both the samples is in the range of 1–5 μm . The O₂-plasma-treated scaffold sample shows a higher ratio of the CaCO₃ volume to the total volume ($0.82\% \pm 0.11\%$) than the untreated scaffold sample ($0.63\% \pm 0.11\%$).

Because of the higher volume of CaCO₃ agglomerates in the O₂-plasma-treated PCL/CaCO₃ scaffold, the porosity of this scaffold is lower ($\sim 82\%$) than that of the untreated scaffold ($\sim 88\%$). Such deep penetration of CaCO₃ into the O₂-plasma-treated PCL scaffold can be explained by its higher surface wettability. Moreover, values of the X-ray linear attenuation coefficient reveal that the mineral density of the scaffold surface pretreated with O₂ plasma is higher than that of the untreated scaffold. The highly reactive chemical groups on the surface of the O₂-plasma-treated PCL scaffold potentially act as nucleation sites for CaCO₃ and control the formation of crystals.

Plasma treatment is a basic approach to modify the electrospun scaffold surface prior to biomineralization. There are a number of reports on using plasma pre-treated PCL fibers as an active substrate for biomimetic growth of the calcium phosphates.^{47–49} For instance, Yang *et al.* achieved a homogeneous coating of CaP coating onto polymer scaffolds after Ar-plasma treatment and a long period (2–6 h and 7 days) of immersion in simulated body fluid (SBF).⁴⁹ Lebourg *et al.* reported the deposition of CaP layers grown on PCL treated with

air plasma and subsequently immersed in SBF for 14 days.⁴⁸ An improvement in the wettability of the electrospun PCL scaffolds and osteoblast-like cell adhesion was observed. Despite promising results, which were obtained, sufficient period of time was required for the surface-modified samples to promote the nucleation of the CaP with the desired phase composition. Moreover, during the biomimetic coating deposition, the pore size of the polymer scaffolds was reduced significantly. The latter fact may be a limiting factor since the porous structure is essential for cell migration, it is important to keep this structure to the most extent. The processing of the PCL scaffolds applied in this work does not have the mentioned disadvantages. The deposition of the dense CaCO₃ porous layer took 3 min in total and the structure of the fiber web remained unchanged. Nevertheless, the main advantage of the vaterite deposits on the PCL scaffold surface is that they can serve as a drug delivery vehicle. Despite excellent osteoconductivity and ease of applicability, use of CaPs as a drug delivery coating is limited. It is known that the development of a coating with high total porosity does not ensure drug molecules penetration and elution, unless there is an adequate pore size distribution.⁵⁰ As shown in ref. 47–49, the biomimetic CaP coating is formed by a mesh of interlocking of flack-like crystals, which allows to create an open microporosity. This structure is suitable for the short time drug administration, because the incorporated drug release is diffusion-controlled. However, a sustained drug



delivery has attracted more interest. There is still a lot to be done in terms of adjusting the coating features to different therapeutical needs and obtaining predictable drug delivery systems. But, since the vaterite particles are the least stable polymorph form of calcium carbonate, they tend to transform into calcite in aqueous environment following by the dissolution and crystallization.⁵¹ The dissolution-precipitation process of the CaCO₃ particles has been shown to allow controlling the drug release time, which makes CaCO₃ the best candidate for polymer scaffold mineralization.²⁸

Conclusions

In summary, we investigated the dependence of the mineralisation behaviour of CaCO₃ deposited on a plasma-pretreated PCL scaffold surface on the working gas atmosphere. We found that the type and number of active groups on the surface of the plasma-treated PCL scaffolds affect the subsequent nucleation and growth of CaCO₃ crystals. The obtained results demonstrate that among the gas atmospheres used in this study (O₂, NH₃, and Ar), O₂ plasma is the most favourable for promoting a positive influence of biomaterials on CaCO₃ formation. Preliminary exposure of the surface of the PCL scaffold to O₂ plasma promotes the formation of a homogeneous and smooth coating that consists mainly of CaCO₃ in a highly porous vaterite crystalline phase. Because of its unique structure and high specific surface area, the vaterite coating has potential for use in various biomedical applications, especially for drug delivery. Functional groups formed on the polymer surface by the O₂-plasma treatment enhance the surface hydrophilicity and permeability, thus inducing deeper penetration of CaCO₃ into the sample surface, as revealed by μ CT. Thus, O₂-plasma treatment of PCL scaffolds results in a higher mineralisation efficiency, which is required to ensure their high drug-loading capacity; this high capacity is, in turn, necessary for their use as implantable drug delivery systems in orthopaedic devices. In our future work, we intend to investigate whether the properties of the PCL/CaCO₃ composite can be controlled by altering the process parameters of the O₂-plasma treatment and the crystallisation conditions of CaCO₃. The extent to which the biological performance of the PCL/CaCO₃ scaffolds—particularly in terms of their effects on the loading capacity and release kinetics of different drugs—can be improved by O₂-plasma treatment, remains to be investigated.

Statement of contributions

R. S. prepared hybrid scaffolds; M. S. investigated properties of hybrid composites; A. I. and D. S. investigated composition of the scaffolds; T. B., A. C., R. S., S. S. and V. W. revealed ultrastructure of the samples using synchrotron radiation; M. S. and D. G. mineralized scaffolds in different regimes; T. D. and B. P. investigated different mineralization mechanisms; A. S. and R. M. characterized the obtained scaffolds chemistry, C. O. performed analysis of the composites fabrication mechanisms; P. C. and N. G. performed literature analysis and characterization of the obtained hybrid samples.

Conflicts of interest

There are no conflicts to declare.

Acknowledgements

The research was conducted at Tomsk Polytechnic University within the framework of the Tomsk Polytechnic University Competitiveness Enhancement Program. B. P. acknowledges the FWO (Vlaanderen). V. W. was supported by the German Research Foundation Research Fellowship WE 6221/1-1. We thank the Institute for Photon Science and Synchrotron Radiation, Karlsruhe Institute of Technology, for the allocated beam time at the synchrotron source and the valuable support provided during our experiments.

References

- 1 D. I. Braghiroli, D. Steffens and P. Pranke, *Drug discovery today*, 2014, **19**, 743–753.
- 2 T. Haddad, S. Noel, B. Liberelle, R. El Ayoubi, A. Ajji and G. De Crescenzo, *Biomatter*, 2016, **6**, e1231276.
- 3 E. Hoveizi, M. Nabiuni, K. Parivar, S. Rajabi-Zeleti and S. Tavakol, *Cell biology international*, 2014, **38**, 41–49.
- 4 C. Zhou, Q. Shi, W. Guo, L. Terrell, A. T. Qureshi, D. J. Hayes and Q. Wu, *ACS Appl. Mater. Inter.*, 2013, **5**, 3847–3854.
- 5 P. Gentile, V. Chiono, I. Carmagnola and P. V. Hatton, *Inter. J. Molec. Sci.*, 2014, **15**, 3640–3659.
- 6 W. Zhao, J. Li, K. Jin, W. Liu, X. Qiu and C. Li, *Mater. Sci. Eng. C*, 2016, **59**, 1181–1194.
- 7 M. S. Savelyeva, A. A. Abalymov, G. P. Lyubun, I. V. Vidyasheva, A. M. Yashchenok, T. E. Douglas, D. A. Gorin and B. V. Parakhonskiy, *J. Biome. Mater. Res. A*, 2017, **105**, 94–103.
- 8 S. N. Gorodzha, A. R. Muslimov, D. S. Syromotina, A. S. Timin, N. Y. Tsvetkov, K. V. Lepik, A. V. Petrova, M. A. Surmeneva, D. A. Gorin, G. B. Sukhorukov and R. A. Surmenev, *Coll. Surf. B: Biointerfaces*, 2017, **160**, 48–59.
- 9 S. Khorshidi, A. Solouk, H. Mirzadeh, S. Mazinani, J. M. Lagaron, S. Sharifi and S. Ramakrishna, *J. Tissue Eng. Regener. Med.*, 2016, **10**, 715–738.
- 10 I. Rajzer, E. Menaszek, R. Kwiatkowski, J. A. Planell and O. Castano, *Mater. Sci. Eng. C*, 2014, **44**, 183–190.
- 11 D. Li, T. Wu, N. He, J. Wang, W. Chen, L. He, C. Huang, H. A. El-Hamshary, S. S. Al-Deya, Q. Ke and X. Mo, *Coll. Surf. B: Biointerfaces*, 2014, **121**, 432–443.
- 12 Q. Cheng, B. L.-P. Lee, K. Komvopoulos, Z. Yan and S. Li, *Tissue Eng. A*, 2013, **19**, 1188–1198.
- 13 M. Domingos, F. Intranuovo, A. Gloria, R. Gristina, L. Ambrosio, P. Bártolo and P. Favia, *Acta biomaterialia*, 2013, **9**, 5997–6005.
- 14 M. Asadian, H. Declercq, M. Cornelissen, R. Morent and N. De Geyter, in *31st International conference on surface modification technologies*, 2017.
- 15 C. López-Santos, A. Terriza, J. Portolés, F. Yubero and A. R. González-Elipe, *J. Phys. Chem. C*, 2015, **119**, 20446–20452.



- 16 R. Ghobeira, N. De Geyter and R. Morent, *Biodegradable polymers: recent developments and new perspectives*, IAPC Publishing, 2017, pp. 191–236.
- 17 P. Cools, R. Morent and N. De Geyter, *Plasma modified textiles for biomedical applications*, Intech, 2016.
- 18 E. D. Yildirim, H. Ayan, V. N. Vasilets, A. Fridman, S. Guçeri and W. Sun, *Plasma Processes Polymers*, 2008, **5**, 58–66.
- 19 L. C. Lopez, M. R. Belviso, R. Gristina, M. Nardulli, R. d'Agostino and P. Favia, *Plasma Processes Polymers*, 2007, **4**, S402–S405.
- 20 Z. Cao, D. Wang, L. Lyu, Y. Gong and Y. Li, *RSC Advances*, 2016, **6**, 10641–10649.
- 21 H. Maeda, V. Maquet, Q. Chen, T. Kasuga, H. Jawad and A. Boccaccini, *Mater. Sci. Eng. C*, 2007, **27**, 741–745.
- 22 J.-P. Andreassen, *J. Crystal Growth*, 2005, **274**, 256–264.
- 23 X. Liu, Y. Gao and Q. Feng, *Fuhe Cailiao Xuebao*, 2012, **29**, 21–27.
- 24 Y. Ma and Q. Feng, *Cryst. Eng. Comm.*, 2015, **17**, 32–39.
- 25 M. Ø. Olderøy, M. Xie, B. L. Strand, E. M. Flaten, P. Sikorski and J.-P. Andreassen, *Crystal Growth Design*, 2009, **9**, 5176–5183.
- 26 J. D. Rodriguez-Blanco, S. Shaw and L. G. Benning, *Nanoscale*, 2011, **3**, 265–271.
- 27 G. Zhang, J. Ge, M. Sun, B. Pan, T. Mao and Z. Song, *Science in China Series B: Chemistry*, 2007, **50**, 114–120.
- 28 M. Saveleva, A. Ivanov, M. Kurtukova, V. Atkin, A. Ivanova, G. Lyubun, A. V. Martyukov, E. I. Cherevko, A. K. Sargsyan, A. S. Fedonnikov, A. I. Norkin, A. G. Skirtach, D. A. Gorin and B. V. Parakhonskiy, *Mater. Sci. Eng. C*, 2018, **85**, 57–67.
- 29 T. Kasuga, H. Maeda, K. Kato, M. Nogami, K.-i. Hata and M. Ueda, *Biomaterials*, 2003, **24**, 3247–3253.
- 30 A. Neira-Carrillo, R. Gentsch, H. G. Börner, D. F. Acevedo, C. A. Barbero and H. Cölfen, *Langmuir*, 2016, **32**, 8951–8959.
- 31 L. Liu, D. He, G.-S. Wang and S.-H. Yu, *Langmuir*, 2011, **27**, 7199–7206.
- 32 D. Yan, J. Jones, X. Yuan, X. Xu, J. Sheng, J. M. Lee, G. Q. Ma and Q. S. Yu, *J. Biomed. Mater. Res. A*, 2013, **101**, 963–972.
- 33 S. Shkarina, R. Shkarin, V. Weinhardt, E. Melnik, G. Vacun, P. Kluger, K. Loza, M. Eppele, S. I. Ivlev, T. Baumbach, M. A. Surmeneva and R. A. Surmenev, *Sci. Rep.*, 2018, **8**, 8907.
- 34 S. Gorodzha, T. E. Douglas, S. K. Samal, R. Detsch, K. Cholewa-Kowalska, K. Braeckmans, A. R. Boccaccini, A. G. Skirtach, V. Weinhardt, T. Baumbach, M. A. Surmeneva and R. A. Surmenev, *J. Biomed. Mater. Res. A*, 2016, **104**, 1194–1201.
- 35 M. Vogelgesang, S. Chilingaryan, T. dos Santos Rolo and A. Kopmann, *High Performance Computing and Communication & 2012 IEEE 9th International Conference on Embedded Software and Systems (HPCC-ICESSE), 2012 IEEE 14th International Conference on: IEEE*, 2012, pp. 824–9.
- 36 S. V. D. Walt, S. C. Colbert and G. Varoquaux, *Computing in Sci. Eng.*, 2011, **13**, 22–30.
- 37 R. Shkarin, *rshkarin/quanfima: quanfima-v0.1*, 2018, DOI: 10.5281/zenodo.1212971.
- 38 S. Van der Walt, J. L. Schönberger, J. Nunez-Iglesias, F. Boulogne, J. D. Warner, N. Yager, E. Gouillart and T. Yu, *Scikit-Image: Image Processing in Python*, *PeerJ*, 2014, **2**, e453.
- 39 J. D. Hunter, *Matplotlib: A 2D graphics environment*, *Computing In Sci. Eng.*, 2007, **9**, 90–95.
- 40 J. Hyun, *Polymer*, 2001, **42**, 6473–6477.
- 41 H.-U. Lee, Y.-S. Jeong, S.-Y. Jeong, S.-Y. Park, J.-S. Bae and H.-G. Kim, *Appl. Surf. Sci.*, 2008, **254**, 5700–5705.
- 42 A. Martins, E. D. Pinho, S. Faria, I. Pashkuleva, A. P. Marques and R. L. Reis, *Small*, 2009, **5**, 1195–1206.
- 43 N. Recek, M. Resnik, H. Motaln, T. Lah-Turnšek, R. Augustine, N. Kalarikkal, N. Kalarikkal, S. Thomas and M. Mozetič, *Int. J. Polymer Sci.*, 2016, **2016**, 7354396.
- 44 M. C. Chang and J. Tanaka, *Biomaterials*, 2002, **23**, 3879–3885.
- 45 A. M. Pappa, V. Karagkiozaki, S. Krol, S. Kassavetis, D. Konstantinou, C. Pitsalidis, L. Tzounis, N. Pliatsikas and S. Logothetidis, *Beilstein J. Nanotech.*, 2015, **6**, 254.
- 46 R. Morent, N. De Geyter, T. Desmet, P. Dubruel and C. Leys, *Plasma Processes and Polymers*, 2011, **8**, 171–190.
- 47 P. A. Tran, H. T. Nguyen, P. J. Hubbard, H. P. Dang and D. W. Hutmacher, *Materials Letters*, 2018, **230**, 12–15.
- 48 M. Lebourg, J. S. Antón and J. G. Ribelles, *Compos. Sci. Tech.*, 2010, **70**, 1796–1804.
- 49 F. Yang, J. Wolke and J. Jansen, *Chem. Eng. J.*, 2008, **137**, 154–161.
- 50 M. Espanol, R. Perez, E. Montufar, C. Marichal, A. Sacco and M. Ginebra, *Acta Biomaterialia*, 2009, **5**, 2752–2762.
- 51 A. Trofimov, A. Ivanova, M. Zyuzin and A. Timin, *Pharmaceutics*, 2018, **10**, 167–236.

