


REVIEW

View Article Online
View Journal | View Issue

Cite this: *Biomater. Sci.*, 2021, **9**, 2362

Hydrogels to engineer tumor microenvironments *in vitro*

Kanishka Fernando,^a Leng Gek Kwang,^a Joanne Tze Chin Lim^a and Eliza Li Shan Fong  ^{*a,b}

In recent years, hydrogel-based three-dimensional tumor models have become increasingly mainstream for cancer research. Hydrogels enable recapitulation of biochemical and biophysical cues in the tumor microenvironment (TME) for the culture of cancer and stromal cells. While there is increasing insight into how cancer–stromal interactions support tumor progression and drug resistance, much remains to be understood for the successful development of therapeutic targets that are capable of controlling tumors in patients. This review aims to first describe both acellular and cellular characteristics of the TME, focusing on cancer cell interactions with the extracellular matrix, fibroblasts, endothelial cells and immune cells. We will then discuss hydrogel systems that have been developed in the past four years to mimic these interactions in the TME and finally propose future directions in the field of *in vitro* tumor modeling.

Received 15th November 2020,
Accepted 28th December 2020

DOI: 10.1039/d0bm01943g

rsc.li/biomaterials-science

1. Introduction

Despite advances in therapeutic strategies and diagnostic capabilities in the last few decades, cancer is still the second leading cause of death worldwide.¹ Treating cancer has always been a major challenge due to the extensive heterogeneity, complexity, and dynamism of the tumor microenvironment (TME).² Within the TME of many cancers, there is a plethora of different stromal cell populations and sub-populations³ which engage in heterotypic and homotypic crosstalk with cancer cells and each other, collectively contributing to tumor progression and drug resistance.^{4,5} These complex interactions occur through different mechanisms, including paracrine signaling⁶ and physical contact.⁷

The recapitulation of patient tumors *in vitro* and *in vivo* as tumor models enables mechanistic studies into cancer biology as well as drug development and personalized drug testing. These models range from simple two-dimensional (2D) monolayer cultures, to more *in vivo*-like three-dimensional (3D) spheroid and organoid cultures, to complex tumor xenografts and genetically-modified animal models.⁸ Historically, cancer cells have been cultured as immortalized cell lines on flat tissue culture plastic due to the low cost, ease of handling and robust reproducibility; however it is now well-recognized that these cell lines generally do not maintain the inherent cancer heterogeneity found in patient tumors due to clonal expansion

and selection after prolonged passaging on plastic.⁹ Furthermore, given the limited capacity for manipulation, 2D tumor models poorly recapitulate the tumor extracellular matrix (ECM), spatial distribution of cells within the TME, as well as the crosstalk between cancer and stromal cells. On the other end of the spectrum, murine models have also been widely used in cancer research since the late 1960s.¹⁰ With their inherent complexity and recapitulation of the TME at least in part, murine models enable the study of cancers in a more physiologically and pathologically relevant context. However, the use of animal models in preclinical research can be very expensive, and there exists species-specific differences in the TME between humans and animals. For example, there are notable differences between human and mouse immune systems such as the proportion of immune components (*e.g.* toll-like receptors, leukocytes and antibody subsets).¹¹ As such, cross-species extrapolation of data obtained from murine models may not be valid in certain circumstances.¹² Additionally, there could be genetic differences between animals and humans such as the expression levels of drug-metabolizing enzymes.¹³ Accordingly, 3D *in vitro* tumor models have been developed to serve as a bridge between simple 2D tumor models and complex *in vivo* tumor models and they have been shown to not only better recapitulate cancer cell signaling *in vivo*,¹⁴ but also enable the recapitulation of all-human cancer–stromal interactions *in vitro*.¹⁵

In this review, we focus on highlighting various strategies that have been developed in the past four years to reconstruct the TME *in vitro* with cancer spheroids and organoids. Specifically, we discuss recent developments that aim to recapitulate cancer cell interactions with the ECM, vasculature,

^aDepartment of Biomedical Engineering, National University of Singapore, Singapore. E-mail: bieflse@nus.edu.sg

^bThe N.1 Institute for Health, National University of Singapore, Singapore

fibroblasts, and immune cells using engineered hydrogel systems.

2. 3D tumor models

Supported by a large number of studies^{16–19} demonstrating the importance of the third dimension for cancer cell culture, the recent paradigm shift from 2D monolayer to 3D cell culture for improved recapitulation of patient tumor characteristics and drug response has made 3D tumor models increasingly mainstream. An ideal 3D tumor model should mimic the *in vivo* tumor architecture, composition, and the molecular profile of cancer cells.²⁰ While 2D cultures are based on growing cells adherent on rigid materials such as polystyrene and glass, 3D cultures allow cells to interact with their environment in all three dimensions and typically involve the formation of cellular aggregates.²¹ In this section, we will briefly describe two main categories of 3D tumor models – models based on spheroids and organoids.

2.1 Tumor spheroid models

Spheroids are typically defined as 3D homo-cellular or hetero-cellular aggregates generated from immortalized cancer cell lines. In the 1970s, Sutherland and colleagues first developed multi-cellular spheroids to recapitulate the *in vivo* cancer phenotype and evaluate the response of spheroids to radiotherapy.²² Broadly categorized into scaffold-based and scaffold-free technologies, several methods have been developed to allow cells to form 3D spheroids.²³ We direct the reader to several excellent reviews on techniques that have been developed to generate 3D spheroid cultures.^{23–26} Spheroids are generally preferred over 2D monolayer cultures as they better mimic cell–cell and cell–matrix interactions in *in vivo* tumors. In addition, as spheroids have a well-defined architecture comprising a hypoxic necrotic core surrounded by a layer of normoxic and quiescent cells and an exterior layer of proliferating cells due to established gradients in oxygen levels, nutrients, and other signaling molecules, spheroids are thought to well-represent avascular solid tumors.¹⁶ Accordingly, numerous studies have demonstrated that 3D spheroid models better recapitulate the *in vivo* cancer cell phenotype,^{27,28} such as the molecular profile of cells undergoing epithelial-to-mesenchymal transition and cancer stem cells,²⁹ as well as *in vivo* drug response.³⁰ As an example, Riedl and colleagues compared differences in activation of the Akt-mTOR signaling pathway between cancer cells cultured as 2D monolayers or as 3D spheroids. Besides a significant decrease in Akt signaling in 3D spheroids, the authors also reported a reduction in phosphorylated S6K towards the spheroid core, closely resembling tumor regions that surround the vasculature *in vivo*.¹⁴ Expectedly, when treated with Akt pathway inhibitors, 3D spheroids also displayed stark differences in drug response. While spheroid cultures possess numerous advantages over 2D monolayer models, there are a few key limitations. In addition to the poor amenability of spheroids for long-term culture,

they also start to lose important genetic features, experience hypoxia, and undergo necrosis over time.^{27,31} Moreover, spheroids are also less able to recapitulate cancer heterogeneity compared to patient-derived organoid-based models.

2.2 Patient-derived tumor organoid models

Organoids were first reported by the Clevers group in 2007³² and are rapidly becoming the gold standard approach to model both normal and cancerous tissues *in vitro*. Organoids are 3D clusters of cells typically generated from stem, progenitor and circulating tumor cells.³³ When these cells are grown in an appropriate matrix (most commonly based on basement membrane extracts) in the presence of tissue-specific morphogens and biochemical cues, specific signaling pathways that control stem cell expansion and differentiation³⁴ are activated. By providing specific environmental cues, organoids spontaneously self-assemble and comprise differentiated cell types that exhibit phenotypic and functional features of tissue-specific cells *in vivo*. Compared to spheroid cultures, organoids better recapitulate the structural and compositional complexity of tissues and organs. For example, gut organoids are able to maintain apical-basal polarity, a characteristic feature of cells in the intestinal epithelium,³⁵ as well as recapitulate the spatial organization of heterogeneous tissue-specific cells.³⁶ Accordingly, numerous studies have demonstrated the feasibility of leveraging the organoid technology to generate tissues for regenerative medicine. As an example, Nie and colleagues generated liver organoids from induced pluripotent stem cells and showed that they exhibited hepatic functions and enhanced the survival rate of mice with acute liver failure.³⁷ In a similar study, organoids developed from small intestinal epithelial cells were able to recapitulate unique features of the small intestine such as self-renewal, form villi and differentiate into Paneth cells that only reside in the epithelia of the small intestine.³⁸ In addition, intestinal organoids may provide new insights into novel polygenic signatures causing disease.³⁹

Besides serving as potential novel sources for cell therapy that could pave the way for the next wave in regenerative medicine, organoids have also been established for a plethora of different cancer types⁴⁰ for modeling of interactions between tumor and its milieu, drug development, and personalized drug testing.^{40,41} To simulate the pathophysiological development of colorectal cancers, the CRISPR-Cas9 genome editing system has been used on organoid models to establish known genetic mutations found in patient tumors.^{42,43} Targeting the most commonly mutated genes in colorectal cancer (tumor suppressor genes *APC*, *SMAD4* and *TP53*, and oncogene *KRAS*), organoids harboring mutations displayed chromosomal instability, aneuploidy, and displayed invasive behavior when implanted *in vivo*.⁴⁴ By modeling the genetic aberrations that lead to malignancy, organoid models enable an increased understanding of genetic changes that occur during tumorigenesis and the development of improved targeted therapies.

In a series of recent studies,^{45,46} the Clevers group has also demonstrated the feasibility of establishing tumor organoids

not by engineering mutations into stem cells, but directly from resected patient-derived tumor tissues or biopsies. To date, an immense collection of patient-derived tumor organoids for long-term cultures have been generated and biobanked, including cancers of the lung,⁴⁷ breast,⁴⁸ gastrointestinal tissues,⁴⁹ and pancreas.⁵⁰ As these tumor organoid models reflect the molecular profile and inherent heterogeneity in cancer cells found in the corresponding patient,⁴⁸ these organoids present tremendous opportunities for drug development and personalized drug testing. In a landmark study by Vlachogiannis and colleagues, the authors established gastrointestinal organoid cultures, treated them with drugs used in patients, and obtained 93% specificity and 88% positive predictive values, suggesting that these models may be very useful for personalized drug testing.⁴⁹ Other groups were able to leverage patient-derived prostate cancer organoids to model rare neuroendocrine prostate cancer as well as generate prostate epithelial cells without any genetic manipulation.^{51,52} Although tumor organoid models recapitulate the molecular features and drug response of patient tumors, it is well-known that existing models are limited by the lack of stromal components that make up the TME, such as the vasculature, cancer-associated

fibroblasts (CAFs) and immune cells, which collectively influence cancer cell behavior and drug response.^{34,53} As such, current organoid models are poorly suited for evaluating drugs that rely on the stromal compartment to be effective, such as anti-angiogenic drugs and immune checkpoint inhibitors.^{34,54,55} Therefore, there is an urgent need to develop more complex organoid-based models which incorporate stromal components and better mimic cancer–stromal interactions.

3. The tumor microenvironment

The TME (Fig. 1) comprises cancer cells and the surrounding stroma. Within the tumor stroma, there are cellular components⁵⁶ such as fibroblasts, endothelial cells and immune cells, as well as non-cellular components. The latter includes the extracellular matrix and soluble signaling molecules.⁵⁷ In solid tumors, the microenvironment has several distinct prominent characteristics. For example, the regions surrounding the tumor are hypoxic, have higher interstitial fluid pressure due to leaky blood vessels, and undergo ECM remodeling.^{58,59} In this section, we will describe features and known cancer–

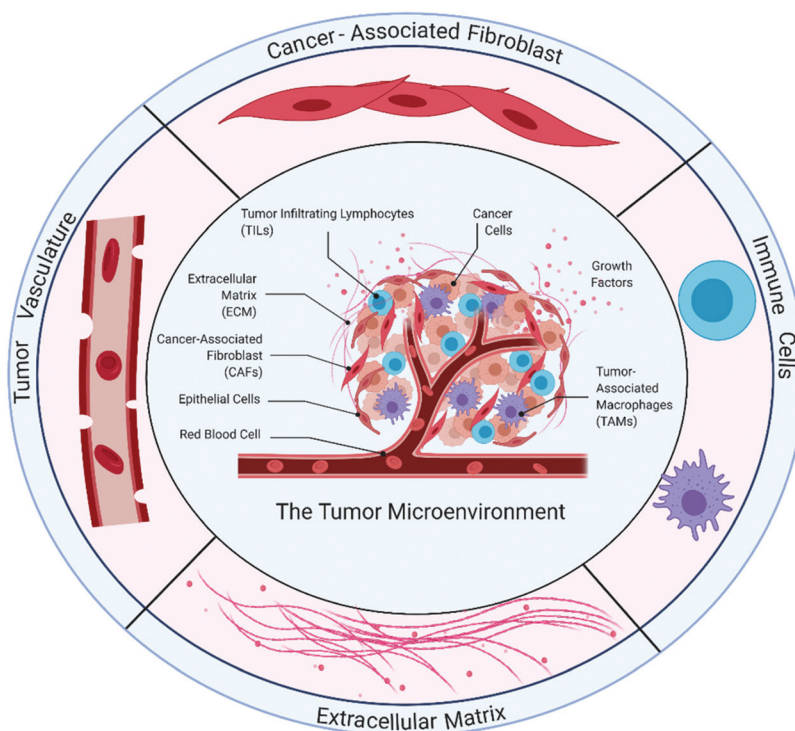


Fig. 1 Components of the tumor microenvironment (TME). The extracellular matrix (ECM) is a 3D dynamic network comprising various macromolecules which provide both structural support and soluble cues (growth factors) to cancer cells. As a result of an imbalance in ECM deposition and degradation, the ECM undergoes remodeling where excessive deposition typically contributes to increased tissue stiffness, leading to tumor progression. Tumor-associated angiogenesis generates dysfunctional and leaky blood vessels. These vessels poorly supply oxygen and nutrients to cells in the TME, creating regions of hypoxia. Leaky blood vessels also contribute to cancer cell metastasis. Cancer-associated fibroblasts are a highly heterogeneous stromal cell population in the TME and contribute to ECM remodeling, epithelial-to-mesenchymal transition and drug resistance. Immune cells such as tumor-infiltrating lymphocytes and tumor-associated macrophages comprise different subtypes that have pro-tumoral or anti-tumoral properties. Immune-targeting approaches in cancer typically involve re-activation of T-cells and manipulation of macrophage polarization.

stromal interactions in the TME to highlight the importance of recapitulating these interactions in *in vitro* tumor models.

3.1 Tumor extracellular matrix

The tumor ECM acts as a complex and dynamic scaffold consisting of a wide variety of macromolecules, including proteoglycans and fibrous proteins,^{60–62} adhesion molecules^{63,64} and stromal cells,⁶⁵ which collectively modulates cancer cell phenotype and drug response⁶⁶ through provision of structural support and ligands to cell surface receptors. Unlike normal tissues where there is a tightly regulated balance between ECM deposition and degradation, this fine balance is disrupted in tumors, where the ECM is constantly being remodeled by both cancer and stromal cells.⁶⁷ ECM dysregulation is commonly seen in fibrotic tissues and cancer, manifested as abnormal ECM deposition and increased tissue stiffness.^{68,69} While ECM remodeling contributes to normal tissue homeostasis, cancer cells exploit this to form tumor niches and metastasize.^{70,71} In many cancers, the tumor ECM is highly enriched in certain subsets of collagens, fibronectin, hyaluronan (HA), tenascin, proteoglycans such as perlecan, and others.^{5,62,72,73} The increased deposition of these ECM components has been shown to support cancer progression and drug resistance by altering cell–cell adhesions, cell–ECM interactions and cell polarity.^{74–76} For example, in the presence of persistent tissue inflammation, stromal fibroblasts are activated to become myofibroblasts, which become highly synthetic and produce large amounts of collagen type I and other ECM components, resulting in desmoplasia.⁷⁷ Collagen type I, an abundant ECM component in many cancers, has been shown to promote epithelial-to-mesenchymal transition through activation of ILK and subsequently NF- κ B-dependent inactivation of GSK-3 β .⁷⁸ The presence of a dense collagen ECM network has also been shown to inhibit cytotoxic CD8⁺ T-cell migration into tumors,⁷⁹ while tumor ECM high in HA facilitates cancer cell invasion and metastasis.⁸⁰ It has also been shown that the latter is able to shield cancer cells from immunosurveillance as well as hinder the accessibility of antibodies, making cancer cells resistant to monoclonal antibody-derived therapy.⁸¹ Additionally, fibronectin has been shown to contribute to poor drug treatment response *via* cell adhesion-mediated drug resistance⁸² as well as contribute to the formation of pre-metastatic niches.⁸³ Lastly, the dysregulated degradation of the tumor ECM *via* matrix metalloproteinases (MMP) and other proteases not only disrupts the function of the ECM as a structural support to maintain cell polarity,^{84,85} uncontrolled ECM degradation also activates latent secreted growth factors that can support cancer cell survival and invasion.^{86,87}

3.2 Physical properties

As cancer progresses, physical properties of the tumor stroma also evolve in concert with tumor growth and metastasis. Physical properties such as stiffness of the ECM and oxygen levels have an impact on cancer cell signaling pathways,⁸⁸ cancer heterogeneity,^{89,90} ECM remodeling,⁹¹ the formation of

vascular networks,⁹² as well as the phenotypic state of fibroblasts⁹³ and immune cells.^{94,95} In breast and colorectal tumors, mechanical stiffness of the tumor itself is often higher than the surrounding normal tissues.^{96,97} Gradual stiffening of tumor tissues is highly correlated with cancer progression and is caused by the excessive deposition and restructuring of the ECM network. During the early stages of cancer, cancer cells secrete growth factors that inhibit MMPs and reduce ECM degradation resulting in increased tissue stiffness.⁹¹ Additionally, growth factors such as transforming growth factor- β (TGF- β) secreted by cancer cells into the TME induces the activation of fibroblasts to CAFs.^{98,99} In turn, CAFs produces lysyl oxidase which promotes collagen crosslinking^{95,100} and loss of Caveolin-1 causes structural disorganization of the ECM¹⁰¹ which drives tissue stiffening.

Reciprocally, remodeling of the tumor ECM and alterations in tissue stiffness affect signaling pathways within cancer and stromal cells. Higher tissue stiffness is reported to enhance cancer cell proliferation^{102–104} and induce phosphatidylinositol 3-kinase activity, promoting cancer cell migration and metastasis.¹⁰⁵ The transcription factor YAP/TAZ, a central mediator of the Hippo pathway and sensor of mechanotransduction, is activated by high tissue stiffness and mediates cancer cells to adopt a stem cell-like state, as well as direct normal fibroblasts to adopt and maintain the CAF phenotype.¹⁰⁶ Enhanced matrix stiffness also induces CAFs to secrete activin A, activating TGF- β /activin A signaling, and promotes a more invasive and pro-metastatic phenotype in colorectal cancer.¹⁰⁷ Besides fibroblasts, stiffening of the tumor stroma also influences immune cells such as macrophages. Macrophages that were cultured on more rigid substrates displayed enhanced migratory behavior and increased production of inflammatory cytokines (*e.g.* nitric oxide, tumor necrosis factor- α).¹⁰⁸ Lastly, tissue stiffness has also been shown to affect drug delivery, where dense ECM decreases the ability of drugs to diffuse through, reducing the access of chemotherapeutics to the tumor core.¹⁰⁹

3.3 Tumor-vasculature interactions

When tumor masses increase in size beyond 1–2 mm³, the surrounding blood vessels are typically unable to supply sufficient oxygen and nutrients to support the intensive metabolic demands of the tumor.^{110,111} To overcome this, the tumor adopts an angiogenic phenotype and promotes the formation of additional blood vessels in the tumor region, contributing to tumor growth and malignancy.¹¹² Characterized by its hierarchical disorganization, aberrant structure and reduced blood flow, the resulting tumor-initiated blood vessels that form are typically structurally and functionally different from the normal vascular network.^{113,114} Structurally, tumor blood vessels do not have a uniform diameter, exhibit irregular branching and bulge at certain regions.^{114,115} Due to the aberrant arrangement and inconsistent vessel shape, blood in tumor vessels faces greater resistance, flows through different paths in an uneven manner and may not perfuse all open blood vessels.^{116,117} Consequently, these poorly functional

tumor blood vessels result in poorly perfused tumors and hypoxic regions within the TME.¹¹⁸ Tumor angiogenesis can occur through different mechanisms. While new vascular outgrowth can form from pre-existing ones (sprouting angiogenesis), pre-existing blood vessels can also undergo structural remodeling and split into two finer branches of blood vessels (intussusceptive angiogenesis).¹¹² In these angiogenic processes, various pro-angiogenic factors such as the vascular endothelial growth factor (VEGF), fibroblast growth factor (FGF) and platelet-derived growth factor (PDGF) modulate the development of blood vessels.¹¹⁹ For example, in sprouting angiogenesis, VEGF play a pivotal role in the activation of endothelial cells and induce sprout formation and extension which contributes to vascular formation.¹²⁰

Besides serving as a conduit to deliver nutrients and oxygen, the tumor vasculature interacts with other components of the TME to create a milieu that supports tumor development. For example, the tumor vasculature mediates the immune landscape of tumors by modulating the migration and activation of immune cells.^{121,122} Endothelial cells that line blood vessels are known to express E-selectin and P-selectin which enable the adhesion of leukocytes.¹²³ These cell adhesion molecules enable trafficking of leukocytes from the circulating blood flow, facilitating trans-endothelial migration and recruitment of immune cells to the tumor site.¹²¹ Dysfunctional vasculature has been shown to impede immune cell infiltration, thereby contributing to immunotherapy resistance in cancer patients.¹²⁴ On the other hand, immune cells also secrete soluble factors that support angiogenesis and vascular remodeling.¹²⁵ For instance, in a hypoxic TME, tumor-associated macrophages (TAMs) undergo metabolic changes to exhibit angiogenic characteristics such as the secretion of pro-angiogenic factors, VEGF, epidermal growth factor (EGF) and FGF-2.¹²⁵ These pro-angiogenic factors promote vascular endothelial cell proliferation, induce angiogenic sprouts, lumen formation and vascular maturation.¹²⁶ Given the importance of the tumor vasculature in supporting cancer growth and development, anti-angiogenic drugs are now part of standard-of-care treatments for several cancers.¹²⁷ More recently, combinatorial therapeutic strategies based on vascular normalization has been proposed (such as those aimed at inhibiting Angiopoietin-2 to regain vascular function and enhance the efficacy of immunotherapy).^{128–130}

3.4. Tumor-fibroblast interactions

Tumors are often described as ‘wounds that never heal’¹³¹ and numerous studies have shown that fibroblasts play a critical role in regulating this process.^{132–134} Generally referred to as cancer-associated fibroblasts (CAFs), these stromal cells can make up the majority of the TME in some cancers and are associated with poor prognosis.^{99,135–137} During normal wound healing, quiescent inactivated fibroblasts differentiate into highly contractile myofibroblasts expressing alpha-smooth muscle actin (α -SMA) to regulate ECM remodeling.¹³⁸ By modulating Wnt/ β -catenin signaling, fibroblasts promote

normal tissue renewal, regeneration and homeostasis.¹³⁹ However, prolonged activation of Wnt signaling can increase the production of stress molecules such as heat shock factor 1 and upregulate pro-inflammatory cytokines (TNF- α and CXCL12) which contribute to tumor progression.^{140,141} Moreover, systemic autocrine signaling of these factors can convert normal myofibroblasts to CAFs during tumor progression.¹⁴²

Besides contributing to dysfunctional ECM regulation,¹⁴³ CAFs have also been shown to support epithelial-to-mesenchymal transition,¹⁴⁴ the adoption of cancer stem cell phenotype^{145,146} and enhance cancer cell survival during drug treatment.^{144,147,148} Additionally, CAFs are also able to recruit immuno-suppressive cells such as M2 macrophages into the tumor stroma to create an immune-suppressive TME.^{149,150} For example, Zhang and colleagues¹⁵¹ showed that in colorectal cancer, CAFs are able to polarize monocytes into immune-suppressive M2 macrophages by secreting interleukin (IL)-2/CXCL2, thereby inhibiting natural killer (NK) cell-mediated cancer cell killing. More recently, CAFs were found to recruit programmed cell death protein 1 (PD-1)-expressing TAMs that contribute to immune suppression.^{152,153} Accordingly, emerging immunotherapies now focus on targeting the CAF-immune cell crosstalk.¹⁴⁸

3.5 Tumor-immune interactions

It is now widely recognized that the crosstalk amongst cancer cells, different stromal cell populations and immune cells contribute to tumor growth and progression.^{149,154,155} Cancer cells are able to subvert the innate anti-tumor immune mechanisms and exploit immune cells to support cancer growth.^{156–158} Since the 19th century, it was hypothesized that cancer develops due to chronic inflammation¹⁵⁹ and it is now well-established that tumor-associated inflammation contributes to cancer progression.^{160,161} Studies have shown that immune cells such as TAMs are able to infiltrate into the TME and mediate the production of a range of chemo-attractants and cytokines to modulate the progression of cancer.^{158,162} Broadly categorized into M1-like and M2-like macrophages, TAMs are known to exhibit considerable plasticity in state depending on the cellular environment^{163,164} and undergo polarization as tumor progresses. Functionally, pro-inflammatory molecules like IL-6 produced by TAMs¹⁶⁵ and stromal cells^{166–168} are able to trigger the JAK/STAT3 signaling pathway in cancer cells through a feed-forward autocrine fashion, thereby promoting tumor progression and metastasis.^{169,170} However, IL-6 is also able to recruit cytotoxic T cells (CD8⁺) into the TME.¹⁷¹ As such, TAMs are deemed a double-edge sword in cancer and the increasing number of studies looking to elucidate TAM heterogeneity may shed light into this potentially targetable stromal cell population.^{172,173}

Another important subset of tumor-associated immune cells are the tumor infiltrating lymphocytes (TILs). These cells include CD4⁺ T helper cells and CD8⁺ cytotoxic T cells that are critical components of the adaptive immune response and play an important role in tumor progression. However, due to

the presence of dysregulated suppressive signals in some TME, T cells often become terminally exhausted.^{156,174} With the goal of mitigating T cell anergy, immune checkpoint inhibitors were developed and are now widely investigated and used as standard-of-care treatment for some cancers.^{175,176} PD-1 on myeloid-derived cells and cytotoxic T lymphocyte associated protein-4 (CTLA-4) bind to programmed death-ligand 1 (PD-L1) and CD86 respectively, to dampen immune response. Intriguingly, cancer cells are able to express the ligands PD-L1 and/or CD86 to mount an anti-inflammatory response in the TME.^{177,178} By introducing neutralizing antibodies against these immune checkpoints, the immune checkpoint ligands are unable to bind to their receptors, thereby eliciting an immune response.^{179,180} As other stromal cell types can also influence the recruitment of immune cells to the tumor^{154,181} and express these immune checkpoint molecules,¹⁸² understanding the cancer–stromal-immune axis in the TME is now of paramount importance to develop strategies to overcome resistance to immune checkpoint blockade.¹⁸³

In sum, the complex bi-directional communication between cancer cells and the TME plays a significant role in influencing mechano-biological signaling pathways, collectively contributing to tumor development^{184,185} and treatment.^{186,187} Therefore, it is critical to reconstruct models that are able to

recapitulate such intricate relationships between various components of the tumor.^{188,189}

4. Hydrogel systems to model cancer interactions with the TME

With the growing consensus that elements of the TME need to be incorporated into *in vitro* tumor models, some investigators have adopted the approach of generating simple, scaffold-less heterospheroids comprising cancer and stromal cells,^{190–196} while some have also leveraged the use of biomaterials to model cancer-TME interactions.^{197–200} The use of scaffolds, including hydrogels, enables the recapitulation of certain biophysical and biochemical aspects of the tumor ECM to support cancer and stromal cell culture. We direct the reader to several excellent review articles on the use of scaffolds for tumor engineering,^{201–207} and focus specifically on describing the use of hydrogels to model the TME *in vitro* (Fig. 2) in this section of the review. Hydrogels are highly hydrophilic networks of polymers cross-linked either by physical or chemical means, ideal for mimicking the ECM of tissues and organs. Depending on the polymer chemistry, they can be manipulated or engineered to have a range of biochemical and biophysical properties with adequate porosity

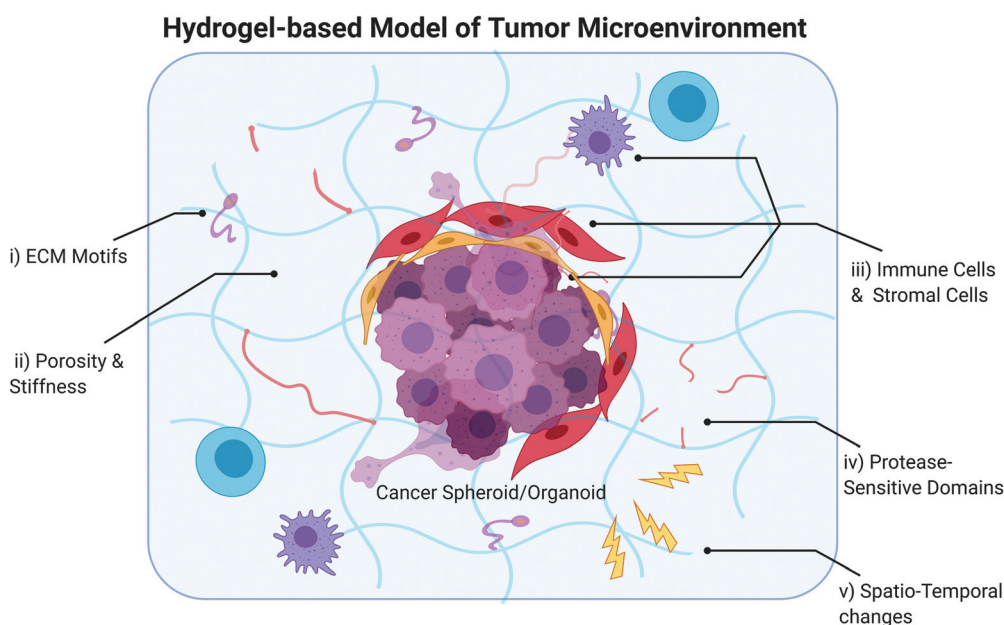


Fig. 2 Hydrogel-based model of the tumor microenvironment (TME). An ideal model should consider the incorporation of (i) ECM motifs present in the tumor ECM, (ii) tumor-matched porosity and stiffness, (iii) various stromal components, (iv) protease-sensitive domains and (v) enable spatio-temporal changes that occur with tumor progression. (i) ECM motifs enable recapitulation of the tumor ECM that can influence drug resistance and metastasis. For example, integrin-binding peptides (RGD) are typically used to mimic the adhesive domains found in ECM macromolecules such as fibronectin and mediate cell attachment in the hydrogel matrix. (ii) Porosity and stiffness of the hydrogel can be fine-tuned to recapitulate biophysical properties of the tumor ECM which influence cell migration and invasion. (iii) Many different stromal cell populations co-exist with cancer cells in the TME. Hydrogel systems with tunable biochemical and biophysical properties may enable expansion of patient-derived stromal cells and maintenance of phenotype. (iv) Protease-sensitive domains such as matrix metalloproteinase-degradable peptide sequences typically used to crosslink polymer networks forming hydrogels enable dynamic cell-mediated matrix remodeling. (v) Hydrogels which enable stimuli-triggered changes in biochemical and biophysical properties can enable the study of spatio-temporal changes that occur in tumors with progression.

for diffusion and nutrient transfer to represent the ECM composition and mechanical properties of specific tissue types.^{208,209} Hydrogels can be classified into natural, synthetic or hybrid depending on the origin of the polymer used for hydrogel fabrication. Recent developments in materials engineering have resulted in the generation of hydrogels with tunable biophysical, biochemical and biological properties which recapitulate the *in vivo* tissue microenvironment with fidelity.²¹⁰

4.1 Types of hydrogels

Natural hydrogels are generally protein- or polysaccharide-based materials derived from biological origins such as collagen, fibrin, alginate, and basement membrane extract.^{211–216} Even up till today, they remain popular matrices for growing cancer and stromal cells given their inherent bioactivity, biocompatibility and innately represent components of the *in vivo* ECM. Indeed, many studies have demonstrated how basement membrane extracts support organoid culture of a wide variety of cancers^{217–220} while collagen and fibrin gels are typically used to culture CAFs,^{221,222} endothelial^{223,224} and immune cells.²²⁵ Hydrogels fabricated from basement membrane extracts such as Matrigel® and Geltrex™ are one of the most widely used natural hydrogels in tumor engineering and are derived from Engelbreth-Holm-Swarm (EHS) mouse sarcoma cells.²²⁶ These matrices are mainly used to support epithelial cell culture as they contain laminin-1, type IV collagen, heparan sulfate proteoglycan, nidogen, and key growth factors.²²⁷ Many recent *in vitro* studies have shown that basement membrane extract matrices support cell morphogenesis and differentiation of cell lines, primary cells and tissue explants.^{228–232} Collagen-based hydrogels are fabricated using extracts of animal or human tissue, and are typically used in the form of gels, sponge or hollow fiber tubings for 3D cell culture.²³³ A wide range of physical (UV or gamma irradiation) and chemical (introduced by functional groups or activation of carboxylic acid groups) crosslinking methods have been developed to modify the biocompatibility and biodegradability of collagen gels.²³⁴ As a result of its protein-rich composition and fibrous structure, collagen gels have been shown to promote vascular morphogenesis²³⁵ and enable the study of immune cell trafficking within the TME.^{225,236} Fibrin is another type of biologically-derived matrix that is formed following the polymerization of fibrinogen alpha-chains with thrombin.²³⁷ This creates a clot-like network with nano- and micro-scale features and viscoelastic properties that mimic the *in vivo* ECM.²³⁸ Taken together, numerous studies have demonstrated the utility of natural hydrogels to mimic the 3D tissue microenvironment for both tissue and tumor engineering.^{211,213,217,239} However, these matrices present a few key limitations, including a narrow range of mechanical properties as well as changes in matrix properties, such as collagen gel contraction,²⁴⁰ leading to short-term studies.²³⁹ Lastly, there may be limited reproducibility of experiments as a result of batch-to-batch variations as well as undesired immunogenic response as they are typically derived from animal tissues.^{241–243}

To better control the bioactive signals presented to cultured cells as well as reduce the variation in material properties of natural hydrogels, synthetic hydrogels such as those based on poly(ethylene glycol) (PEG) are an attractive alternative for tissue and tumor engineering.^{244,245} PEG-based hydrogels are highly hydrophilic, mechanically stable over time, and permeable polymeric networks that facilitate the diffusion of gas and nutrients.^{246–248} Importantly, these hydrogels remain relatively inert with low protein adsorption, hence a wide range of bioactive moieties (proteins, peptides and drugs) or biopolymers (HA, collagen and fibrin) can be conjugated to PEG to mimic the *in vivo* ECM with controlled and tunable bioactivity.^{249–251} By modulating the polymer concentration or extent of crosslinking,^{252,253} synthetic hydrogels also enable tuning of physical properties such as stiffness to match that of the tissue ECM of interest.^{254–256} More recently, hybrid hydrogels which are composites of natural and synthetic polymers have been developed. Hybrid hydrogels merge the advantages of both polymer types in one system, that is, the presence of ligands for cell adhesion and filamentous nature of natural polymers and user-defined control of synthetic polymers, to exhibit different biochemical and physical properties.^{257–259} As an example, HA-based hydrogels have been shown to be highly tunable and conducive for cancer cell culture.^{260–262} HA is a non-sulfated glycosaminoglycan composed of repeating glucuronate disaccharides and *N*-acetyl glucosamine²⁶³ and is an integral part of the *in vivo* tumor ECM and synovial fluid.²⁶⁴ The different functional groups (acid and hydroxyl groups) on the HA backbone allow different crosslinking chemistries including hydrazide modifications, non-covalent reactions, crosslinking with polyfunctional epoxide, glutaraldehyde (GTA) and carbodiimides.^{264,265} We have previously shown how HA can be modified with integrin-binding peptides and MMP-degradable domains to support mesenchymal cell attachment and matrix remodeling to recapitulate the prostatic bone metastasis TME.²⁶⁶ In the next few sections, we will discuss how hydrogels have been employed to model the tumor ECM and recapitulate interactions between cancer cells and the tumor ECM, vasculature, fibroblasts, and immune cells.

4.2 Hydrogels mimicking the extracellular matrix

Basement membrane extracts such as Matrigel® are widely used as the gold standard matrix for organoid culture due to its tissue ECM-like biochemical and biophysical properties. Besides basement membrane extracts, hydrogels fabricated from decellularized tissues were recently explored as an alternative to provide more tissue-specific biochemical cues for organoid culture.^{267,268} Using decellularized mouse and human mammary tissues as biomaterials to fabricate a self-gelling hydrogel system that contains growth factors unique to the mammary gland, Mollica and colleagues bioprinted mammary normal epithelial and tumor organoids and demonstrated that the tissue-specific ECM hydrogels were capable of supporting organoid proliferation, comparable to the use of rat tail collagen or basement membrane extracts. Furthermore,

the authors showed that the mammary ECM-based hydrogels elicited unique gene expression profiles in the cultured organoids compared to those grown in basement membrane extracts, likely due to differences in structure and growth factor composition, highlighting the importance of incorporating tissue-specific biochemical cues to support organoid culture.²⁶⁹ Taking a different approach, Broguiere and colleagues developed the first well-defined 3D matrix that allows for long-term expansion of organoids comprising both progenitor and differentiated cells. In seeking to develop a well-defined hydrogel system alternative to hydrogels based on basement membrane extracts, the authors not only identified soft fibrin scaffolds as a suitable physical substitute, they also found that the presence of naturally occurring adhesive Arg-Gly-Asp (RGD) peptide sequences on the scaffold, as well as laminin-111, are critical for robust organoid formation and expansion. Functionally, no significant differences in drug response were observed in pancreatic cancer organoids cultured in basement membrane extracts, fibrin/basement membrane extracts or the fibrin/laminin hydrogel, suggesting that the fibrin/laminin hydrogel system may be amenable for the culture of epithelial cancer organoids for drug screening applications.²⁷⁰

While biologically-derived matrices provide innate cues, these systems typically confer poor tunability in material properties and architecture as well as low reproducibility of experimental results due to batch-to-batch variations.²¹⁸ As such, synthetic biomaterials are actively being explored to fabricate hydrogel systems for organoid culture. In a landmark study, Gjorevski and colleagues used enzymatically crosslinked PEG hydrogels to determine the critical ECM components that dictate intestinal stem cell expansion and organoid formation. Interestingly, the authors found that different stages of the organoid formation process necessitated different cellular microenvironments. For example, while a non-degradable and stiff matrix that enabled fibronectin-mediated adhesion was required for stem cell expansion, a soft matrix containing laminin-111 was needed for organoid formation.²⁷¹ Although the authors only showed the amenability of this system for the culture of normal and cancerous colorectal organoids, the modular nature of this system opens up the possibility of identifying and customizing unique organoid-supporting conditions for different tissues using a tunable and minimalistic platform. Indeed, in a subsequent study, these same PEG hydrogels were shown to also support the culture of hepatic progenitors and organoids, where integrin-mediated adhesion was again shown to be critical for the expansion of liver progenitors and organoid growth.²⁷² In another study to create a well-defined substitute to the use of basement membrane extracts for organoid culture, Bergenheim and colleagues used QGel CN99 (a fully defined PEG-based hydrogel) to culture human colonic organoids derived from biopsy tissue. Organoids in QGel CN99 showed similar cell growth, differentiation, organoid forming efficiency and gene expression profiles when compared to those grown in Matrigel® and could be cultured for at least 6 passages.²⁷³ Rather than using fully

synthetic hydrogels to recapitulate the *in vivo* ECM to support organoid culture *in vitro*, Ng and colleagues leveraged enzymatically crosslinked hydrogels consisting of functionalized natural biomaterials, gelatin-phenol and HA-phenol, that allow for independent alterations in mechanical properties and gelation rate. The authors found that gelatin-phenol hydrogels better supported organoid survival of colorectal cancer patient-derived xenograft cells as compared to HA-phenol or composite hydrogels, suggesting the importance of integrin-mediated adhesion for organoid survival. Additionally, the authors identified hypoxia as an important factor for improving organoid viability, and organoids cultured in gelatin-phenol hydrogels maintained the histological and mutational features of the corresponding *in vivo* tumor.²⁷⁴ Given the prevalence of HA in the colorectal cancer TME^{275,276} and that different molecular weight HA can interact differently with HA receptors such as CD44 and RHAMM, further work is necessary to determine if HA truly is dispensable for organoid formation and survival.

In recent years, there has been an increased interest in polyisocyanide-based hydrogels for 3D cell culture due its stress-induced stiffening properties, collagen-like helical architecture and thermosensitive properties which allow for facile recovery of encapsulated cells.^{277–279} Zhang *et al.* developed a polyisocyanide-based hydrogel decorated with the adhesive RGD peptide to form mammary gland organoids. Not only did the hydrogels enable mammary gland organoid formation, the resulting organoids could be maintained for prolonged durations *in vitro* and retain their ability to branch. By varying the density of RGD presented in the hydrogel, the authors found that an increased engagement of integrins that bind to RGD may result in downstream intracellular signaling that favors differentiation into the basal cell lineage.²⁸⁰ Although no cancer organoids were cultured in this system, it would be interesting to observe whether similar preferential selection of basal cell progenitors also occurs in the presence of enhanced integrin-mediated signaling *via* RGD, which may make this system useful for studying the basal subtype of breast cancer.²⁸¹ In another similar study, Ye and colleagues formed human liver organoids using a polyisocyanopeptide hydrogel with laminin-111. Unlike previous studies, RGD alone was not sufficient to support organoid growth. Rather, the authors found that laminin-111 was necessary to support organoid proliferation and formation similar to Matrigel®.²⁸² The importance of laminin-111 on organoid growth was highlighted again in a study by Brandenburg and colleagues, who engineered PEG-based hydrogel microcavity arrays to improve the heterogeneity of generated organoids. While organoids could be grown in microcavity arrays with laminin-111 on the surface, poor cell survival was observed in cultures with collagen type IV alone. Importantly, this system enabled high content phenotypic screening of 80 anti-cancer drugs in colorectal cancer organoids. However, it remains to be seen whether the cultured organoids recapitulate the molecular features and drug response of the original tumors from which they were derived.²⁸³

Taken together, in recent years, efforts have been made to develop *in vitro* conditions to culture organoids by recapitulating certain aspects of the *in vivo* ECM. While most of these studies have focused on colorectal cancer, it is expected that this approach of modularly investigating the role of different ECM components on organoid growth would be extrapolated to other cancers. Lastly, rather than just focusing on cancer cells, much more work needs to be placed on understanding the effect of the tumor ECM on stromal cells, especially CAFs and immune cells.

4.3 Mimicking physical properties of the TME

Increased tissue stiffness is characteristic of solid tumors and is typically because of an increase in the amount of tumor ECM. Increased matrix stiffness can enhance cell-ECM interaction and promote cancer cell invasiveness,²⁸⁴ while supporting CAF differentiation.²⁸⁵ Engineered hydrogels with tunable mechanical properties enable recapitulation of *in vivo* tissue stiffness and elucidation of downstream effects on cellular state in both cancer and stromal cells. Using PEG-diacrylate hydrogels, Jabbari and colleagues showed that stiffness of the cancer stem cell niche may be unique for different cancers as the optimum hydrogel stiffness was found to be 5 kPa for breast cancer cells, 25 kPa for gastrointestinal cancer cells and 50 kPa for osteosarcoma cells,²⁸⁶ suggesting the need to customize matrix stiffness for tumor model development in a tissue-specific manner. To develop a hydrogel system that accommodates the culture of sensitive cells, Macdougall and colleagues developed PEG-based hydrogels which made use of nucleophilic thiol-yne chemistry to enable the formation of hydrogels without the need for any external catalyst or free radicals. These hydrogels can be tuned to exhibit a stiffness range of 4–10 kPa and modified to present ECM components of interest. While the authors did not demonstrate the effect of stiffness, the gentle chemistry behind this hydrogel system makes this system potentially very useful for culturing sensitive cells such as some patient-derived primary cells.²⁸⁷ Rather than investigating the effect of stiffness in a static manner, in recent years there has been an increased interest in developing dynamic enzyme-mediated *in situ* stiffening hydrogels. In one example, Tirella and colleagues reported the development of PEG-based lysyl oxidase-responsive hydrogels with initial stiffness range of 0.5–4 kPa which can be further tuned by 0.5 kPa using lysyl oxidase.²⁸⁸ In another example, Liu and colleagues developed tyrosinase-mediated PEG-peptide hydrogels with initial stiffnesses of 0.8, 1.8 and 2.8 kPa where tyrosinase treatment increased hydrogel stiffness to 1.44 kPa, 2.34 kPa and 3.08 kPa, respectively.²⁸⁹ Taken together, these dynamic hydrogels may enable the study of pathological tissue stiffening during tumorigenesis. However, in order to better mimic tissue stiffening as observed *in vivo*, these hydrogel systems may need to be modified to enable greater induced differences in stiffness. Besides focusing on elucidating the effect of tissue stiffness on cancer cells alone, it is also critical to understand how increased tissue stiffness influences cancer-stromal interactions given that cancer cells are only one part of the whole

tumor which comprises stromal cells. Indeed, there is increasing evidence to suggest a positive relationship between normal tissue stiffening and cancer occurrence and progression.^{290,291} In order to understand the relationship between ECM stiffness and breast cancer cell-adipocyte interactions, Yue and colleagues modulated the extent of methacrylated-gelatin cross-linking and showed that adipogenesis was influenced in a stiffness-dependent manner in the presence of tumor spheroids. While cancer cells inhibited adipogenesis at high stiffness levels within the range of breast cancer, the inhibition effect was lower in low stiffness tissue constructs within the range of normal breast tissue.²⁹² It would be interesting to leverage this same approach to investigate whether stiffness also influences the interaction of cancer cells with other stromal cell types like mechano-sensitive macrophages.

Apart from stiffness as an important biophysical parameter, the physical structure of the ECM also plays an important role in cancer progression. It is well-established that cancer cells metastasize to distant sites using the circulatory system, lymphatic system or through the peritoneal cavity.^{293,294} During this migration and invasion process, cancer cells travel through different tissue ECM by squeezing through micropores larger than 3 μm or by inducing protease-mediated matrix degradation which is dependent on the stiffness and architecture of the ECM.^{295–297} In recent years, much effort has been made to elucidate the effect of matrix stiffness using hydrogels on cancer cell invasiveness.^{298–300} However, very little attention has been paid on the role of micro-structure and pore features to better mimic the physical parameters governing cancer cell invasion. In a recent study, Liu and colleagues designed collagen- and alginate-based hydrogels with defined micro-structure, tunable mechanical stiffness and permeability. By varying the degree of calcium-mediated cross-linking, stiffness of the collagen-alginate hydrogels could be varied between 1.2 kPa and 10 kPa. Additionally, with increase in the degree of calcium-mediated crosslinking, pore geometry changed from round to flat. Using the collagen-alginate hydrogel formulation with the largest pore micro-structure (median pore size of 95 μm by volume and 93% in porosity), the authors then demonstrated how these hybrid hydrogels with large pore size better supported mammary fibroblast migration as compared to standard collagen gels and that these fibroblasts led the way for cancer cell invasion.³⁰¹ This study suggests the importance of supporting both protease-independent motility as well as protease-dependent matrix degradation in hydrogel systems for the study of both cancer and stromal cell migration. The authors then introduced polyhedral oligomeric silsesquioxanes (POSS) nano-molecules into the collagen-alginate hydrogel to induce different gelling mechanisms and showed the feasibility of decoupling matrix stiffness from pore architecture. Cultured mammary fibroblasts remodeled the collagen network differently depending on the matrix micro-structure. Interestingly, the remodeled collagen matrix was thicker and aligned perpendicular to spheroids, and facilitated the invasion of cancer cells.³⁰² Collectively, these studies underscore the importance of the hydrogel

micro-structure in mediating fibroblast-initiated cancer cell migration and invasion. In another interesting study, Wisdom and colleagues asked if cells could still migrate through a protease-independent manner if the ECM pore size were too small. By designing interpenetrating network hydrogels comprising reconstituted basement and alginate that exhibit different degrees of plasticity while having the same stiffness and ligand density, the authors demonstrated that in hydrogels with high plasticity, cancer cells extend invadopodia protrusions to mechanically pry open micro-scale channels and migrate through them.³⁰³ Again, this study highlights another important biophysical aspect of the ECM – plasticity – that engineered hydrogels could be designed with to recapitulate in *in vitro* tumor models.

4.4 Recapitulating the cancer–vasculature interaction

Leveraging on previous work that showed how starPEG-heparin hydrogels can support the co-culture of liver cancer cells with human umbilical endothelial vein endothelial cells (HUVECs),³⁰⁴ Brey and colleagues developed a complex co-culture system comprising breast or prostate cancer cells, HUVECs and mesenchymal stromal cells. This hydrogel system is decorated with RGD to enable integrin-mediated cell attachment, crosslinked with MMP-sensitive domains to enable cell-mediated matrix remodeling, and contains heparin which pro-angiogenic growth factors have an affinity to and can be delivered to encapsulated cells. The resulting co-cultures established using the starPEG-heparin hydrogels exhibited more ordered development of tumor angiogenesis and vascular recruitment where tumors proliferated while in contact with HUVECs as compared to Matrigel®. Furthermore, treating the tri-culture with angiogenesis inhibitors led to a decrease in tumor angiogenesis.³⁰⁵ Taubenberger and colleagues further modified the above PEG-heparin hydrogels by using collagen type I- and laminin-111-derived peptides to provide additional biochemical cues for the culture of breast (MCF-7) and prostate (PC-3, LNCaP) cancer cells. Besides enhancing the growth of PC-3 prostate cancer cells, the collagen type I- and laminin-111-derived peptides also increased cancer-HUVEC interactions over hydrogels with RGD.³⁰⁶ Using a photo-polymerizable methacrylamide-functionalized gelatin hydrogel system, Ngo and colleagues developed a model of the perivascular niche in glioblastoma. Given the importance of HA in the glioblastoma TME, the authors first investigated the effect of matrix-immobilized HA on endothelial network formation and found that HA reduced the complexity of endothelial cell networks comprising HUVECs and fibroblasts. Interestingly, in the absence of glioblastoma cells, endothelial cell networks could persist over two weeks in culture; however in the presence of glioblastoma cells, network regression occurred over time, potentially mimicking vessel co-option and regression observed in the *in vivo* glioblastoma TME.³⁰⁷ In a follow-up study, the authors used RNA-sequencing to elucidate temporal transcriptomic changes that accompany the development and dissolution of endothelial cell networks in the presence of glioblastoma cells and showed that the co-culture of glioblastoma

cells with endothelial cell network indeed recapitulated vessel co-option and regression *in vivo*.³⁰⁸ Taking a microfluidics-based approach to engineer organotypic models of glioblastoma, Cui and colleagues showed using an integrin ($\alpha_v\beta_3$)-specific collagen hydrogel that perivascular macrophage-endothelial interactions mediate *in vitro* proangiogenic activity through integrin ($\alpha_v\beta_3$) receptors and Src-PI3K-YAP signaling. Importantly, the authors demonstrated the potential of inhibiting both $\alpha_v\beta_3$ integrin and TGF β -R1 for blocking tumor vascularization in the glioblastoma TME as the dual inhibition arrested pro-angiogenic endothelial-macrophage interactions in the *in vitro* model.³⁰⁹ Lastly, in seeking to spatially control the location of cancer cells with respect to the vasculature, Roudsari and colleagues engineered a PEG-based two-layer hydrogel with cancer and vasculature layers. Interestingly, large invasive cancer clusters were mainly located at the interface region with the adjacent vasculature, supporting the importance of vascular cells in tumor progression.³¹⁰

4.5 Recapitulating the cancer-fibroblast interaction

CAFs are a critical component of the TME with wide-ranging functions, including ECM remodeling, reciprocal interactions with cancer cells to influence cell survival, invasiveness and drug resistance, as well as immunosuppressive effects on other stromal cells such as infiltrating leukocytes.³¹¹ Yet, much remains to be understood about this highly heterogeneous stromal cell population. While normal fibroblasts and some CAF subpopulations can inhibit cancer growth and invasiveness, CAFs generally have the opposite effect of supporting tumor progression in the TME.³¹² Given that CAF state and associated properties may be a function of environmental cues, it is important to elucidate how changes in the context influence CAF behavior so that cancer-CAF interactions can be accurately recapitulated. To mimic the breast cancer stromal niche, Cao *et al.* developed a mechanically-tunable collagen and alginate interpenetrating network hydrogel (collagen-alginate-IPN) by modulating the crosslinking of either or both polymers. Interestingly, in the softer hydrogel with only collagen crosslinked, CAFs adopted a spread morphology with activated mechanosensitive YAP and increased expression of α -SMA and fibroblast activation protein as compared to the stiffer matrix with both collagen and alginate crosslinked. As a result of this phenotypic shift, CAFs in the softer matrix also exhibited changes in secretory factors which increased cancer invasiveness over those in the stiffer matrix, suggesting the importance of understanding how matrix mechanical properties influence CAF state both *in vivo* and *in vitro*.³¹³ On the contrary, using orthogonally crosslinked PEG-peptide thiol-norbornene hydrogels susceptible to tyrosinase-mediated *in situ* gel stiffening, Liu and colleagues showed that stiffened matrices enhanced the expression of α -SMA in pancreatic stellate cells, precursors to pancreatic CAFs.²⁸⁹ These opposing findings highlight the need to carefully dissect and understand the biochemical and mechanical cues that influence CAF activation and phenotypes.

To study cancer–CAF interactions, different systems have been developed including spheroids,³¹⁴ microfluidic systems,³¹⁵ hydrogel plugs comprising collagen,³¹⁶ stacked paper-based co-cultures³¹⁷ and bioprinted models.³¹⁸ Seeking to elucidate the effect of stromal fibroblast paracrine signaling on cancer cell invasiveness, McLane and colleagues engineered a model of tumor *in situ* by coating tumor spheroids with basement membrane and further encapsulating the spheroids within a collagen type I matrix of *in vivo* stiffness with or without fibroblasts. Using PEG-based polymers to crosslink collagen type I, the authors found that while increased stromal stiffness increased cancer invasiveness in the absence of fibroblasts, this effect was diminished when fibroblasts were incorporated. Mechanistically, it was found that stiffness-activated fibroblasts inhibited cancer invasiveness through osteoprotegerin-mediated paracrine signaling.³¹⁹ While these two studies appear to suggest that increased stiffness promotes the tumor-restraining CAF phenotype, much more work needs to be done to deeply characterize the molecular profile and functions of CAFs under study as these results are contrary to what we understand of the relationship between CAF biology and matrix mechanics.²⁸⁵ Stack paper-based co-culture systems enable easy retrieval of co-cultured cells for downstream analysis and spatially mapping the location of both cancer and CAFs.^{317,320} In these models, cells are encapsulated in hydrogel matrices such as collagen, and infiltrated into thin cellulose scaffold layers which are then stacked or rolled. Akin to a roll of paper, the McGuigan group developed the tumor roll for analysis of cellular environment and response (TRACER) model³¹⁷ and showed how the platform could be used to establish robust co-cultures of head and neck cancer cells with CAFs.³²¹ By using non-adhesive agarose as a barrier between the cancer and CAFs to prevent cell–cell contact, the TRACER system can be modified to enable the study of paracrine interactions only. Using this model, CAFs were found to increase the invasiveness of the cancer cells through paracrine signaling. In a subsequent study, the authors also developed another system, gels for live analysis of compartmentalized environments (GLANCE), that enables easy imaging and characterization of spatio-temporal interactions that occur at the tumor–stroma interface.³²² In another approach to model the cancer–CAF interface, Truong and colleagues developed a microfluidic platform that can spatially organize hydrogel matrices with different ECM and cell compositions and enable the study of cancer invasion in real-time at the single-cell level.³¹⁵ While these engineered platforms greatly enable the improved characterization and manipulation of cancer–CAF interactions, rather than relying on collagen or basement membrane extract gels, further efforts need to be placed on integrating biochemically and mechanically tunable hydrogel systems into these engineered platforms to investigate how different matrix properties influence cancer and CAF behavior. Lastly, given our increasing understanding of CAF heterogeneity and their sensitivity to environmental context, it would be critical to deeply characterize the phenotype of CAFs used in these studies.

Leading the front on CAF heterogeneity, the Tuveson group recently demonstrated the existence of two CAF subpopulations using co-culture models comprising pancreatic cancer organoids with pancreatic stellate cells in Matrigel®. Of notable mention, as reported in this study (and our own study³²³), the integration of CAFs into organoid-based models requires significant optimization, as several factors present in organoid media, including Noggin, B27 and TGF- β inhibitor, can significantly inhibit fibroblast growth.³²⁴ Leveraging this developed co-culture model, the authors showed that two distinct CAF subpopulations exist, including a myofibroblastic-type adjacent to the cancer organoids, and a more inflammatory-type further away. These spatially segregated different CAF subpopulations were validated in many other subsequent studies and highlight the importance of the tumor architecture in tumor modeling. Accordingly, 3D bioprinting may be a very useful tool to recreate the tumor architecture. Using sodium alginate-gelatin hydrogels, Mondal and colleagues demonstrated the feasibility of printing non-small cell lung cancer patient-derived xenograft cells together with lung CAFs.³¹⁸ While the authors demonstrated printability of the biomaterial and that cell viability was supported in the 3D bioprinted co-culture, subsequent studies are needed to deeply characterize the cancer–CAF crosstalk as well as create spatial architecture in the model. Lastly, efforts are also been made to investigate the effect of CAFs on other stromal cell types in the TME. For example, Koch and colleagues used starPEG-heparin hydrogels to generate tri-cultures comprising mammary epithelial, endothelial and fibroblast cells to investigate the effect of CAFs on endothelial network formation. As compared to normal fibroblasts, CAFs induced the formation of denser endothelial cell networks which had increased number of vessels and branching points.³²⁵ While further work could have been done to profile the molecular changes that occur in the cultured cells to validate these findings, this study highlights the importance of recapitulating stromal–stromal interactions especially with CAFs, which have nodal interactions in the TME.

4.6 Recapitulating tumor-immune interactions

TAMs are inherently highly plastic in nature, adopting different states in response to ECM composition, stiffness and topology, cellular interactions, amongst other environmental cues.³²⁶ As a result of education within the TME, monocytes polarize into TAMs that typically are M2-like and have a pro-tumoral role in advanced cancers, supporting cancer growth and invasiveness, angiogenesis and immunosuppression.^{327,328} To understand the effect of integrin engagement on macrophage polarization, Cha and colleagues used gelatin methacryloyl (GelMA) and PEG-diacrylate hydrogels encapsulating human monocytic cells and showed that while the bioactive GelMA hydrogel changed cell shape, the bioinert PEG-diacrylate hydrogel did not. Accordingly, in the presence of IL-4, GelMA induced the generation of M2-like macrophages in contrast to PEG-diacrylate hydrogels, which induced M1-like macrophages. Mechanistically, differences in integrin expression were observed in macrophages cultured in the two

hydrogel systems; specifically, GelMA hydrogels induced M2-like macrophage polarization through integrin $\alpha_2\beta_1$ attachment, potentially *via* STAT6 activation.³²⁹ In a more recent study, Court and colleagues made use of 3D collagen type I hydrogels and showed that the hydrogel differentially modulated human macrophage polarization as compared to 2D culture.³³⁰ Collectively, these studies highlight the tight interplay between matrix cues and macrophage phenotype, mandating careful attention to how macrophages are cultured *in vitro* for tumor modeling. In this regard, tunable hydrogel systems enable investigations into how biochemical and mechanical cues in the TME influence macrophage polarization and its interactions with cancer and stromal cells.

Besides matrix cues, cell–cell proximity can also influence macrophage polarization. Tevis and colleagues compared two cancer–TAM spheroid models using collagen hydrogels, where macrophages were incorporated either through diffuse encapsulation within the cancer spheroid-containing collagen hydrogel or within the cancer spheroid itself forming a heterospheroid. In the former, the diffuse encapsulation of TAMs in the surrounding collagen hydrogel mimics TAMs in the stroma while in the latter model, the direct cell–cell contact between TAMs and cancer cells in the heterospheroid mimics TAMs in the tumor core. Interestingly, oxygen consumption and production of EGF was greater in the heterospheroid configuration compared to the model where TAMs were diffusely encapsulated. By measuring IL-10, it was found that the heterospheroid configuration enhanced the polarization of macrophages towards a M2-like state, highlighting the importance of close cancer-macrophage proximity on generation of TAMs.³³¹ Leveraging this finding, Huang developed a hydrogel system which enables facile recovery of encapsulated cells. In this system, hydrogels are fabricated from inducing host–guest interactions between aromatic groups on gelatin and modified photocrosslinkable β -cyclodextrins, and this crosslinking can be disrupted using another guest monomer that competes for β -cyclodextrins. In seeking to understand the behavior of reprogrammed TAMs, endometrial cancer-macrophage heterospheroids were encapsulated in the hydrogel and following the application of interferon- γ , the authors showed that there was a reduction in pro-angiogenic VEGF, cancer cell migration and tumor growth when compared to M2-like macrophages co-cultured with cancer cells.³³²

Within the TME, the macrophage-CAF crosstalk contributes to tumor progression. For example, it was recently shown that the complement component C3 is specifically expressed by the ‘immune’ CAF subpopulation and the resulting cleaved product (C3a) recruits C3aR+ macrophages, creating an immunosuppressive TME.³³³ To understand the macrophage-fibroblast crosstalk in prostatic bone metastasis, Costa and colleagues developed a perlecan-modified collagen type I and HA-based hydrogel that supported the tri-culture of prostate cancer cells, macrophages and stromal fibroblasts. Perlecan was used to sequester and present Wnt3a in the engineered model. Using this tri-culture, M2-like macrophages were found to increase levels of *SULF1* and *HSPG2* in fibroblasts, and that

SULF1 can mitigate Wnt3a-driven growth signals.³³⁴ In another example, Rebelo and colleagues developed an alginate-based tri-culture of lung cancer cells, CAFs and monocytes and demonstrated that the model creates an immunosuppressive and invasive environment that activated monocytes towards TAMs. It should be noted that the TAM-like phenotype was observed only when all three cell types were in the tri-culture. The authors also demonstrated that the M2-like phenotype could be modulated through the CSF1R inhibitor BLZ945, resulting in a decrease in the M2-like macrophages.³³⁵ Lastly, to elucidate the role of macrophages in the glioblastoma TME, Tang and colleagues used a 3D bioprinting system to develop a complex tetra-culture of glioblastoma stem cells, macrophages, astrocytes, and neural stem cells, in a hydrogel comprising GelMA and glycidyl methacrylate-HA (GMHA) hydrogels. In doing so, the model represented aspects of the normal brain, immune components, stromal components, and important biochemical cues from the extracellular matrix (HA). The authors found that the tetra-culture better recapitulated transcriptomic signatures found in glioblastoma tissues as compared to standard sphere cultures, and that macrophages upregulated immune activation signatures, exhibited increased M2 polarization, and promoted glioblastoma stem cell invasion.³³³ As one of the most complex models established, this 3D bioprinted model enables recapitulation and interrogation of cellular crosstalk in the TME to identify novel functional dependencies and therapeutic targets.

In the past decade, the introduction of T-cell targeting immunomodulators blocking the immune checkpoints CTLA-4 and PD-1 or PD-L1 has revived the use of immunotherapy to treat cancer patients.³³⁶ While some patients can respond remarkably well to immune checkpoint blockade, it is still challenging to predict whether an individual patient would be sensitive to immunotherapy.³³⁷ *In vitro* models that simulate T cell-mediated tumor recognition on an individual patient level may be very useful for predicting the efficacy of immune checkpoint blockade or understanding underlying mechanisms of resistance. In a landmark study, Dijkstra and colleagues co-cultured peripheral blood lymphocytes with matched cancer organoids and showed that the co-culture yielded tumor-reactive T-cells.³³⁸ Of notable mention, as the co-culture system involved the use of animal-derived basement membrane extracts, the authors reported that the material can induce CD4⁺ T cell reactivity that is not directed against tumor antigens. To circumvent the reactivity of basement membrane extracts, protocols now call for a scaffold-less approach by isolating organoids prior to co-culture with peripheral blood lymphocytes.³³⁹ This finding highlights the need for synthetic matrices that would not elicit undesired T cell reactivity, and more broadly, an increased understanding of matrix cues that may alter T cell behavior such as proliferation and activation. As an example, Pérez Del Río and colleagues engineered PEG hydrogels covalently linked with low molecular weight heparin to present the cytokine CCL21, mimicking the lymph nodes to support T cell expansion.³⁴⁰ In another example, Kim and colleagues investigated different hydrogel systems – collagen,

fibrin and collagen-fibrin – to support lymphoid stromal network formation and T-cell interaction. While fibrin gel-encapsulated stromal cells enabled T-cell penetration due to stromal remodeling that created voids for T-cell migration, T-cell migration was not observed for the other two gel systems.³⁴¹ This study highlights again, the importance of considering matrix properties, in this case, mesh size, that can support T-cell motility. T-cell motility would be particularly important in generating complex immune contexts to study T-cell migration within the TME.

In sum, recapitulating cancer-immune interactions *in vitro* is particularly challenging as immune cells, being innate environmental sensors, exhibit phenotypes and functions that can be modulated by biochemical and biophysical cues.³⁴² As such, increased attention needs to be placed on deeply characterizing these cells when cultured in hydrogel conditions which attempt to recapitulate the TME.

5. Hydrogels for next generation tumor modeling

In recent years, with cancer organoid models becoming the *in vitro* gold standard for mechanistic studies and drug screening, the use of naturally-derived matrices such as Matrigel® is becoming increasingly popular. While a handful of studies have explored the development and characterization of alternative hydrogel systems which enable the identification of critical acellular cues (ECM and matrix stiffness) that support organoid culture, only very few models have considered the incorporation of cellular TME components and the tumor architecture. Given the increasing recognition that targeting the TME may be necessary to successfully control tumors in patients such as in the case of immune checkpoint inhibitors, there is clearly a need to build complex tumor models *in vitro* that accurately recapitulate the network of relevant TME interactions. For this, several challenges exist. First, how should patient-derived stromal cells be cultured *in vitro* while preserving function and heterogeneity³⁴³? Studies suggest that some stromal cell types, such as macrophages and CAFs, may be particularly contextual in which phenotype changes with the environment.³¹³ Hence, there is an urgent need to develop hydrogels that are not only conducive for maintaining cancer organoids, but also different stromal cell types of interest. As described, very few studies have begun to investigate how the stromal cell phenotype changes with dimensionality, biochemical and biophysical cues. Apart from maintenance, efforts also need to be placed on designing hydrogels that support stromal cell expansion, such as in the case of T-cells, if these stromal cells were to be eventually used to build the final tumor model. Instead of just focusing on RGD to represent an adhesive domain found in many ECM proteins, investigations should also focus on leveraging hydrogels to probe the role of other ECM components³⁴⁴ in the TME, such as the different splice variants of fibronectin, tenascin and proteoglycans, for culturing stromal (and cancer) cells.

Additionally, besides stiffness as a biophysical cue, recent studies demonstrating the effect of stress-relaxation³⁴⁵ and stress-stiffening²⁷⁹ on cell spreading and differentiation suggests that these parameters should also be investigated in carefully designed hydrogel systems for stromal cell culture.

The micro- and macro-architecture of tumors have thus far been largely overlooked in *in vitro* tumor models. Using live-imaging of tumor slices, it was previously shown that T-cell migration in tumors is affected by the density and orientation of the stromal ECM.³⁴⁶ While T-cells were actively motile in loose fibronectin and collagen regions, the reverse was observed for dense matrix areas. Importantly, T-cells preferentially migrated along aligned ECM fibers in perivascular regions or around tumor nests which prevented T-cells from reaching the cancer cells. As most studies on T-cell migration use fibrous collagen gels, hydrogel systems which enable the presentation of fibrous micro-architectures may be very valuable for the reconstruction of the immune contexture in the TME for the study of T-cell migration. Lastly, recent advances in spatial analysis of the TME at the single-cell level^{347,348} have delineated the localization patterns of different stromal cell types with respect to cancer, highlighting the importance of recapitulating the architecture or spatial distribution of cells in tumor models.³⁴⁷ For example, Ji and colleagues showed that in squamous cell carcinomas, while fibroblasts and macrophages accumulate at the tumor-stroma interface, CD8⁺ T-cells and neutrophils were largely excluded from the tumor.³⁴⁷ Hydrogel systems which enable spatial patterning and positioning of cells may be useful to reconstruct the tumor architecture.³⁴⁹

In sum, *in vitro* tumor modeling is on the rapid uphill climb with the advent of organoid technologies. Hydrogels are a versatile tool for recapitulating cellular and acellular components of the TME. With further efforts in enabling the incorporation of heterogeneous stromal cell populations as well as tumor architecture, hydrogel-based tumor models may be a very valuable tool for drug development and personalized medicine.

Conflicts of interest

There are no conflicts to declare.

Acknowledgements

E. L. S. Fong would like to acknowledge funding from the National University of Singapore Start-Up grant and the National Medical Research Council-Young Individual Research Grant (MOH-000136).

References

- 1 World Health Organization, Cancer, <https://www.who.int/news-room/fact-sheets/detail/cancer>, (accessed 2nd November 2020).

- 2 C. Roma-Rodrigues, R. Mendes, P. V. Baptista and A. R. Fernandes, *Int. J. Mol. Sci.*, 2019, **20**, 840.
- 3 F. R. Balkwill, M. Capasso and T. Hagemann, *J. Cell Sci.*, 2012, **125**, 5591.
- 4 D. Hanahan and L. M. Coussens, *Cancer Cell*, 2012, **21**, 309–322.
- 5 S. Nallanthighal, J. P. Heiserman and D.-J. Cheon, *Front. Cell Dev. Biol.*, 2019, **7**, 86.
- 6 Y.-H. Wang, Y.-Y. Dong, W.-M. Wang, X.-Y. Xie, Z.-M. Wang, R.-X. Chen, J. Chen, D.-M. Gao, J.-F. Cui and Z.-G. Ren, *J. Exp. Clin. Cancer Res.*, 2013, **32**, 51–51.
- 7 S. C. Schwager, P. V. Taufalele and C. A. Reinhart-King, *Cell. Mol. Bioeng.*, 2019, **12**, 1–14.
- 8 D. M. S. van Marion, U. M. Domanska, H. Timmer-Bosscha and A. M. E. Walenkamp, *Crit. Rev. Oncol. Hematol.*, 2016, **97**, 107–117.
- 9 W. Wang, N. G. Iyer, H. T. u. Tay, Y. Wu, T. K. H. Lim, L. Zheng, I. C. Song, C. K. Kwoh, H. Huynh, P. O. B. Tan and P. K. H. Chow, *BMC Cancer*, 2015, **15**, 828–828.
- 10 M. Breitenbach and J. Hoffmann, *Front. Oncol.*, 2018, **8**, 401.
- 11 J. Mestas and C. C. W. Hughes, *J. Immunol.*, 2004, **172**, 2731–2738.
- 12 T. Denayer, T. Stöhr and M. Van Roy, *New Horiz. Transl. Med.*, 2014, **2**, 5–11.
- 13 M. Mandon, S. Huet, E. Dubreil, V. Fessard and L. Le Hégarat, *Sci. Rep.*, 2019, **9**, 10548.
- 14 A. Riedl, M. Schleiderer, K. Pudelfko, M. Stadler, S. Walter, D. Unterleuthner, C. Unger, N. Kramer, M. Hengstschläger, L. Kenner, D. Pfeiffer, G. Krupitza and H. Dolznig, *J. Cell Sci.*, 2017, **130**, 203.
- 15 P. Benien and A. Swami, *Future Oncol.*, 2014, **10**, 1311–1327.
- 16 S. Nath and G. R. Devi, *Pharmacol. Ther.*, 2016, **163**, 94–108.
- 17 A. Nyga, U. Cheema and M. Loizidou, *J. Cell Commun. Signaling*, 2011, **5**, 239.
- 18 R. Edmondson, J. J. Broglie, A. F. Adcock and L. Yang, *Assay Drug Dev. Technol.*, 2014, **12**, 207–218.
- 19 H. Nalluri, S. Subramanian and C. Staley, *Future Microbiol.*, 2020, **15**, 16.
- 20 S. A. Langhans, *Front. Pharmacol.*, 2018, **9**, 6.
- 21 J. Hoarau-Véhot, A. Rafii, C. Touboul and J. Pasquier, *Int. J. Mol. Sci.*, 2018, **19**, 181.
- 22 R. M. Sutherland, *Pharmacol. Ther.*, 1980, **8**, 105–123.
- 23 Y. Fang and R. M. Eglen, *SLAS Discovery*, 2017, **22**, 456–472.
- 24 D. Lv, Z. Hu, L. Lu, H. Lu and X. Xu, *Oncol. Lett.*, 2017, **14**, 6999–7010.
- 25 N.-E. Ryu, S.-H. Lee and H. Park, *Cells*, 2019, **8**, 1620.
- 26 T.-M. Achilli, J. Meyer and J. R. Morgan, *Expert Opin. Biol. Ther.*, 2012, **12**, 1347–1360.
- 27 F. Hirschhaeuser, H. Menne, C. Dittfeld, J. West, W. Mueller-Klieser and L. A. Kunz-Schughart, *J. Biotechnol.*, 2010, **148**, 3–15.
- 28 T. Herheliuk, O. Perepelytsina, A. Ugnivenko, L. Ostapchenko and M. Sydorenko, *Stem Cell Invest.*, 2019, **6**, 21.
- 29 S. Melissaridou, E. Wiechec, M. Magan, M. V. Jain, M. K. Chung, L. Farnebo and K. Roberg, *Cancer Cell Int.*, 2019, **19**, 16.
- 30 A. S. Nunes, A. S. Barros, E. C. Costa, A. F. Moreira and I. J. Correia, *Biotechnol. Bioeng.*, 2019, **116**, 206–226.
- 31 R. M. Sutherland, B. Sordat, J. Bamat, H. Gabbert, B. Bourrat and W. Mueller-Klieser, *Cancer Res.*, 1986, **46**, 5320–5329.
- 32 N. Barker, J. H. van Es, J. Kuipers, P. Kujala, M. van den Born, M. Cozijnsen, A. Haegebarth, J. Korving, H. Begthel, P. J. Peters and H. Clevers, *Nature*, 2007, **449**, 1003–1007.
- 33 Q. Zhang, Y. Rong, K. Yi, L. Huang, M. Chen and F. Wang, *Theranostics*, 2020, **10**, 12060–12071.
- 34 J. Kim, B.-K. Koo and J. A. Knoblich, *Nat. Rev. Mol. Cell Biol.*, 2020, **21**, 571–584.
- 35 A. Fatehullah, P. L. Appleton and I. S. Näthke, *Philos. Trans. R. Soc., B*, 2013, **368**, 20130014–20130014.
- 36 S. J. Edwards, V. Carannante, K. Kuhnigk, H. Ring, T. Tararuk, F. Hallböök, H. Blom, B. Önfelt and H. Brismar, *Front. Mol. Biosci.*, 2020, **7**, 208.
- 37 Y.-Z. Nie, Y.-W. Zheng, M. Ogawa, E. Miyagi and H. Taniguchi, *Stem Cell Res. Ther.*, 2018, **9**, 5.
- 38 M. Fukuda, T. Mizutani, W. Mochizuki, T. Matsumoto, K. Nozaki, Y. Sakamaki, S. Ichinose, Y. Okada, T. Tanaka, M. Watanabe and T. Nakamura, *Genes Dev.*, 2014, **28**, 1752–1757.
- 39 M. Funata, Y. Nio, D. M. Erion, W. L. Thompson and T. Takebe, *Cell Death Differ.*, 2020, DOI: 10.1038/s41418-020-00661-3.
- 40 Y.-H. Lo, K. Karlsson and C. J. Kuo, *Nat. Cancer*, 2020, **1**, 761–773.
- 41 Y. Li, D. Guo, Y. Zhang, L. Wang, T. Sun, Z. Li, X. Zhang, S. Wang, Y. Chen and A. Wu, *Transl. Oncol.*, 2020, **14**, 100935–100935.
- 42 M. Matano, S. Date, M. Shimokawa, A. Takano, M. Fujii, Y. Ohta, T. Watanabe, T. Kanai and T. Sato, *Nat. Med.*, 2015, **21**, 256–262.
- 43 K. Dzobo, A. Rowe, D. A. Senthebane, M. A. M. AlMazyadi, V. Patten and M. I. Parker, *OMICS*, 2018, **22**, 733–748.
- 44 J. Drost, R. H. van Jaarsveld, B. Ponsioen, C. Zimmerlin, R. van Bortel, A. Buijs, N. Sachs, R. M. Overmeer, G. J. Offerhaus, H. Begthel, J. Korving, M. van de Wetering, G. Schwank, M. Logtenberg, E. Cuppen, H. J. Snippert, J. P. Medema, G. J. P. L. Kops and H. Clevers, *Nature*, 2015, **521**, 43–47.
- 45 E. Driehuis, K. Kretschmar and H. Clevers, *Nat. Protoc.*, 2020, **15**, 3380–3409.
- 46 J. Drost and H. Clevers, *Development*, 2017, **144**, 968.
- 47 K. G. Huo, E. D'Arcangelo and M. S. Tsao, *Transl. Lung Cancer Res.*, 2020, **9**(5), 2214–2232.

- 48 J. Sumbal, Z. Budkova, G. Á. Traustadóttir and Z. Koledova, *J. Mammary Gland Biol. Neoplasia*, 2020, DOI: 10.1007/s10911-020-09468-x.
- 49 G. Vlachogiannis, S. Hedayat, A. Vatsiou, Y. Jamin, J. Fernández-Mateos, K. Khan, A. Lampis, K. Eason, I. Huntingford, R. Burke, M. Rata, D. M. Koh, N. Tunariu, D. Collins, S. Hulkki-Wilson, C. Ragulan, I. Spiteri, S. Y. Moorcraft, I. Chau, S. Rao, D. Watkins, N. Fotiadis, M. Bali, M. Darvish-Damavandi, H. Lote, Z. Eltahir, E. C. Smyth, R. Begum, P. A. Clarke, J. C. Hahne, M. Dowsett, J. de Bono, P. Workman, A. Sadanandam, M. Fassan, O. J. Sansom, S. Eccles, N. Starling, C. Braconi, A. Sottoriva, S. P. Robinson, D. Cunningham and N. Valeri, *Science*, 2018, **359**, 920–926.
- 50 O. Grbovic-Huezo, K. L. Pitter, N. Lecomte, J. Saglimbeni, G. Askan, M. Holm, J. P. Melchor, R. Chandwani, S. Joshi, C. Haglund, C. A. Iacobuzio-Donahue, G. Chiosis, T. Tammela and S. D. Leach, *Proc. Natl. Acad. Sci. U. S. A.*, 2020, **117**, 30670.
- 51 L. Puca, R. Bareja, D. Prandi, R. Shaw, M. Benelli, W. R. Karthaus, J. Hess, M. Sigouros, A. Donoghue, M. Kossai, D. Gao, J. Cyrta, V. Sailer, A. Vosoughi, C. Pauli, Y. Churakova, C. Cheung, L. D. Deonaraine, T. J. McNary, R. Rosati, S. T. Tagawa, D. M. Nanus, J. M. Mosquera, C. L. Sawyers, Y. Chen, G. Inghirami, R. A. Rao, C. Grandori, O. Elemento, A. Sboner, F. Demichelis, M. A. Rubin and H. Beltran, *Nat Commun*, 2018, **9**(1), 2404.
- 52 K. Cheaito, H. F. Bahmad, H. Jalloul, O. Hadadeh, H. Msheik, A. El-Hajj, D. Mukherji, M. Al-Sayegh and W. Abou-Kheir, *Front. Cell Dev. Biol.*, 2020, **8**, 571677–571677.
- 53 K. Dzobo, *OMICS*, 2020, **24**, 175–179.
- 54 H. Xu, Y. Jiao, S. Qin, W. Zhao, Q. Chu and K. Wu, *Exp. Hematol. Oncol.*, 2018, **7**, 30–30.
- 55 M. Kim, H. Mun, C. O. Sung, E. J. Cho, H.-J. Jeon, S.-M. Chun, D. J. Jung, T. H. Shin, G. S. Jeong, D. K. Kim, E. K. Choi, S.-Y. Jeong, A. M. Taylor, S. Jain, M. Meyerson and S. J. Jang, *Nat. Commun.*, 2019, **10**, 3991.
- 56 C. Belli, D. Trapani, G. Viale, P. D'Amico, B. A. Duso, P. D. Vigna, F. Orsi and G. Curigliano, *Cancer Treat. Rev.*, 2018, **65**, 22–32.
- 57 V. Vultaggio-Poma, A. C. Sarti and F. Di Virgilio, *Cells*, 2020, **9**(11), 2496.
- 58 C.-H. Heldin, K. Rubin, K. Pietras and A. Östman, *Nat. Rev. Cancer*, 2004, **4**, 806–813.
- 59 B. S. Sørensen and M. R. Horsman, *Front. Oncol.*, 2020, **10**, 562.
- 60 C. Frantz, K. M. Stewart and V. M. Weaver, *J. Cell Sci.*, 2010, **123**, 4195–4200.
- 61 M. Yamauchi, T. H. Barker, D. L. Gibbons and J. M. Kurie, *J. Clin. Invest.*, 2018, **128**, 16–25.
- 62 S. Xu, H. Xu, W. Wang, S. Li, H. Li, T. Li, W. Zhang, X. Yu and L. Liu, *J. Transl. Med.*, 2019, **17**, 309.
- 63 G. Bendas and L. Borsig, *Int. J. Cell Biol.*, 2012, **2012**, 676731.
- 64 M. Janiszewska, M. C. Primi and T. Izard, *J. Biol. Chem.*, 2020, **295**, 2495–2505.
- 65 N. Kozlova, J. E. Grossman, M. P. Iwanicki and T. Muranen, *Trends Pharmacol. Sci.*, 2020, **41**, 183–198.
- 66 D. A. Senthane, T. Jonker, A. Rowe, N. E. Thomford, D. Munro, C. Dandara, A. Wonkam, D. Govender, B. Calder, N. C. Soares, J. M. Blackburn, M. I. Parker and K. Dzobo, *Int. J. Mol. Sci.*, 2018, **19**(10), 2861.
- 67 F. Spill, D. S. Reynolds, R. D. Kamm and M. H. Zaman, *Curr. Opin. Biotechnol.*, 2016, **40**, 41–48.
- 68 C. Frantz, K. M. Stewart and V. M. Weaver, *J. Cell Sci.*, 2010, **123**, 4195–4200.
- 69 C. Bonnans, J. Chou and Z. Werb, *Nat. Rev. Mol. Cell Biol.*, 2014, **15**, 786–801.
- 70 M. W. Pickup, J. K. Mouw and V. M. Weaver, *EMBO Rep.*, 2014, **15**, 1243–1253.
- 71 F. Kai, A. P. Drain and V. M. Weaver, *Dev. Cell*, 2019, **49**, 332–346.
- 72 P. Lu, V. M. Weaver and Z. Werb, *J. Cell Biol.*, 2012, **196**, 395–406.
- 73 V. B. Lokeshwar, S. Mirza and A. Jordan, *Adv. Cancer Res.*, 2014, **123**, 35–65.
- 74 G. Bendas and L. Borsig, *Int. J. Cell Biol.*, 2012, **2012**, 676731.
- 75 V. Gkretsi and T. Stylianopoulos, *Front. Oncol.*, 2018, **8**, 145.
- 76 M. Egeblad, M. G. Rasch and V. M. Weaver, *Curr. Opin. Cell Biol.*, 2010, **22**, 697–706.
- 77 S. Yazdani, R. Bansal and J. Prakash, *Adv. Drug Delivery Rev.*, 2017, **121**, 101–116.
- 78 D. Medici and A. Nawshad, *Matrix Biol.*, 2010, **29**, 161–165.
- 79 D. E. Kuczek, A. M. H. Larsen, M.-L. Thorseth, M. Carretta, A. Kalvisa, M. S. Siersbæk, A. M. C. Simões, A. Roslind, L. H. Engelholm, E. Noessner, M. Donia, I. M. Svane, P. t. Straten, L. Grøntved and D. H. Madsen, *J. ImmunoTher. Cancer*, 2019, **7**, 68.
- 80 M. Liu, C. Tolg and E. Turley, *Front. Immunol.*, 2019, **10**, 947.
- 81 N. C. Singha, T. Nekoroski, C. Zhao, R. Symons, P. Jiang, G. I. Frost, Z. Huang and H. M. Shepard, *Mol. Cancer Ther.*, 2015, **14**, 523–532.
- 82 Y. Ye, R. Zhang and H. Feng, *Cell Biol. Int.*, 2020, **44**, 1840–1849.
- 83 R. N. Kaplan, R. D. Riba, S. Zacharoulis, A. H. Bramley, L. Vincent, C. Costa, D. D. MacDonald, D. K. Jin, K. Shido, S. A. Kerns, Z. Zhu, D. Hicklin, Y. Wu, J. L. Port, N. Altorki, E. R. Port, D. Ruggero, S. V. Shmelkov, K. K. Jensen, S. Rafii and D. Lyden, *Nature*, 2005, **438**, 820–827.
- 84 A. Das, M. Monteiro, A. Barai, S. Kumar and S. Sen, *Sci. Rep.*, 2017, **7**, 14219.
- 85 K. Kessenbrock, V. Plaks and Z. Werb, *Cell*, 2010, **141**, 52–67.
- 86 M. Egeblad and Z. Werb, *Nat. Rev. Cancer*, 2002, **2**, 161–174.

- 87 C. Gialeli, A. D. Theocharis and N. K. Karamanos, *FEBS J.*, 2011, **278**, 16–27.
- 88 M. Kalli and T. Stylianopoulos, *Front. Oncol.*, 2018, **8**, 55–55.
- 89 J. Qian and E. B. Rankin, *Adv. Exp. Med. Biol.*, 2019, **1136**, 43–55.
- 90 A. López-Carrasco, S. Martín-Vañó, R. Burgos-Panadero, E. Monferrer, A. P. Berbegall, B. Fernández-Blanco, S. Navarro and R. Noguera, *J. Exp. Clin. Cancer Res.*, 2020, **39**, 226.
- 91 B. Emon, J. Bauer, Y. Jain, B. Jung and T. Saif, *Comput. Struct. Biotechnol. J.*, 2018, **16**, 279–287.
- 92 F. Bordeleau, B. N. Mason, E. M. Lollis, M. Mazzola, M. R. Zanotelli, S. Somasegar, J. P. Califano, C. Montague, D. J. LaValley, J. Huynh, N. Mencia-Trinchant, Y. L. Negrón Abril, D. C. Hassane, L. J. Bonassar, J. T. Butcher, R. S. Weiss and C. A. Reinhart-King, *Proc. Natl. Acad. Sci. U. S. A.*, 2017, **114**, 492–497.
- 93 N. I. Nissen, M. Karsdal and N. Willumsen, *J. Exp. Clin. Cancer Res.*, 2019, **38**, 115.
- 94 I. Acerbi, L. Cassereau, I. Dean, Q. Shi, A. Au, C. Park, Y. Y. Chen, J. Liphardt, E. S. Hwang and V. M. Weaver, *Integr. Biol.*, 2015, **7**, 1120–1134.
- 95 V. Petrova, M. Annicchiarico-Petruzzelli, G. Melino and I. Amelio, *Oncogenesis*, 2018, **7**, 10.
- 96 J. I. Lopez, I. Kang, W. K. You, D. M. McDonald and V. M. Weaver, *Integr. Biol.*, 2011, **3**, 910–921.
- 97 S. Kawano, M. Kojima, Y. Higuchi, M. Sugimoto, K. Ikeda, N. Sakuyama, S. Takahashi, R. Hayashi, A. Ochiai and N. Saito, *Cancer Sci.*, 2015, **106**, 1232–1239.
- 98 M.-T. Melissari, N. Chalkidi, M. E. Sarris and V. Koliarakis, *Front. Cell Dev. Biol.*, 2020, **8**, 630.
- 99 R. Kalluri and M. Zeisberg, *Nat. Rev. Cancer*, 2006, **6**, 392–401.
- 100 T. Liu, L. Zhou, D. Li, T. Andl and Y. Zhang, *Front. Cell Dev. Biol.*, 2019, **7**, 60–60.
- 101 C. Thompson, S. Rahim, J. Arnold and A. Hielscher, *PLoS One*, 2017, **12**, e0172067.
- 102 L. Hui, J. Zhang, X. Ding, X. Guo and X. Jiang, *Int. J. Oncol.*, 2017, **50**, 1439–1447.
- 103 J. Schrader, T. T. Gordon-Walker, R. L. Aucott, M. van Deemter, A. Quaas, S. Walsh, D. Benten, S. J. Forbes, R. G. Wells and J. P. Iredale, *Hepatology*, 2011, **53**, 1192–1205.
- 104 S. E. Reid, E. J. Kay, L. J. Neilson, A.-T. Henze, J. Serneels, E. J. McGhee, S. Dhayade, C. Nixon, J. B. G. Mackey, A. Santi, K. Swaminathan, D. Athineos, V. Papalazarou, F. Patella, Á. Román-Fernández, Y. ElMaghloob, J. R. Hernandez-Fernaund, R. H. Adams, S. Ismail, D. M. Bryant, M. Salmeron-Sanchez, L. M. Machesky, L. M. Carlin, K. Blyth, M. Mazzone and S. Zanivan, *EMBO J.*, 2017, **36**, 2373–2389.
- 105 V. Gkretsi and T. Stylianopoulos, *Front. Oncol.*, 2018, **8**, 145–145.
- 106 S. Noguchi, A. Saito and T. Nagase, *Int. J. Mol. Sci.*, 2018, **19**, 3674.
- 107 J. Bauer, M. A. B. Emon, J. J. Staudacher, A. L. Thomas, J. Zessner-Spitzenberg, G. Mancinelli, N. Krett, M. T. Saif and B. Jung, *Sci. Rep.*, 2020, **10**, 50.
- 108 E. J. Hoffmann and S. M. Ponik, *Front. Oncol.*, 2020, **10**, 787.
- 109 H. Wang, R. Mislali, R. Ahmed, P. Vincent, S. F. Nwabunwanne, J. R. Gunn, B. W. Pogue and M. M. Doyle, *Clin. Cancer Res.*, 2019, **25**, 2136.
- 110 J. Folkman, *N. Engl. J. Med.*, 1971, **285**, 1182–1186.
- 111 J. Folkman, *JNCI, J. Natl. Cancer Inst.*, 1990, **82**, 4–7.
- 112 F. Hillen and A. W. Griffioen, *Cancer Metastasis Rev.*, 2007, **26**, 489–502.
- 113 D. W. Siemann, *Cancer Treat. Rev.*, 2011, **37**, 63–74.
- 114 J. Nagy, A. Husain, S.-C. Jaminet, A. Dvorak and H. Dvorak, *Tumor Vasculature, Structure and Function*, 2013.
- 115 M. A. Konerding, E. Fait and A. Gaumann, *Br. J. Cancer*, 2001, **84**, 1354–1362.
- 116 W. Liang, Y. Ni and F. Chen, *Oncotarget*, 2016, **7**, 15444–15459.
- 117 D. J. Chaplin, P. L. Olive and R. E. Durand, *Cancer Res.*, 1987, **47**, 597–601.
- 118 M. B. Schaaf, A. D. Garg and P. Agostinis, *Cell Death Dis.*, 2018, **9**, 115.
- 119 I. Marech, C. Leporini, M. Ammendola, M. Porcelli, C. D. Gadaleta, E. Russo, G. De Sarro and G. Ranieri, *Cancer Lett.*, 2016, **380**, 216–226.
- 120 R. Lugano, M. Ramachandran and A. Dimberg, *Cell. Mol. Life Sci.*, 2020, **77**, 1745–1770.
- 121 S. A. Hendry, R. H. Farnsworth, B. Solomon, M. G. Achen, S. A. Stacker and S. B. Fox, *Front. Immunol.*, 2016, **7**, 621–621.
- 122 J. S. Pober and G. Tellides, *Trends Immunol.*, 2012, **33**, 49–57.
- 123 L. Borsig, *Glycobiology*, 2018, **28**, 648–655.
- 124 Y. Huang, B. Y. S. Kim, C. K. Chan, S. M. Hahn, I. L. Weissman and W. Jiang, *Nat. Rev. Immunol.*, 2018, **18**, 195–203.
- 125 A. Albini, A. Bruno, D. M. Noonan and L. Mortara, *Front. Immunol.*, 2018, **9**, 527.
- 126 C. Zhu, J. M. Kros, C. Cheng and D. Mustafa, *Neuro-Oncology*, 2017, **19**, 1435–1446.
- 127 R. I. Teleanu, C. Chircov, A. M. Grumezescu and D. M. Teleanu, *J. Clin. Med.*, 2019, **9**, 84.
- 128 F. Mpekris, C. Voutouri, J. W. Baish, D. G. Duda, L. L. Munn, T. Stylianopoulos and R. K. Jain, *Proc. Natl. Acad. Sci. U. S. A.*, 2020, **117**, 3728.
- 129 Z. Liu, Y. Wang, Y. Huang, B. Y. S. Kim, H. Shan, D. Wu and W. Jiang, *Trends Pharmacol. Sci.*, 2019, **40**, 613–623.
- 130 M. Schmittnaegel and M. De Palma, *Trends Cancer*, 2017, **3**, 809–812.
- 131 H. F. Dvorak, *N. Engl. J. Med.*, 1986, **315**, 1650–1659.
- 132 D. Öhlund, E. Elyada and D. Tuveson, *J. Exp. Med.*, 2014, **211**, 1503–1523.
- 133 D. S. Foster, R. E. Jones, R. C. Ransom, M. T. Longaker and J. A. Norton, *JCI Insight*, 2018, **3**, 18.

- 134 B. Rybinski, J. Franco-Barraza and E. Cukierman, *Physiol. Genomics*, 2014, **46**, 223–244.
- 135 L. Liu, L. Liu, H. H. Yao, Z. Q. Zhu, Z. L. Ning and Q. Huang, *PLoS One*, 2016, **11**, e0159947.
- 136 K. Dzobo and C. Dandara, *Omics*, 2020, **24**, 340–351.
- 137 K. Dzobo and C. Dandara, *Omics*, 2020, **24**, 314–339.
- 138 G. Gabbiani, *J. Pathol.*, 2003, **200**, 500–503.
- 139 Z. Steinhart and S. Angers, *Development*, 2018, **145**, dev146589.
- 140 N. Ferrari, R. Ranftl, I. Chicherova, N. D. Slaven, E. Moeendarbary, A. J. Farrugia, M. Lam, M. Semiannikova, M. C. W. Westergaard, J. Tchou, L. Magnani and F. Calvo, *Nat. Commun.*, 2019, **10**, 130.
- 141 R. Scherz-Shouval, S. Santagata, M. L. Mendillo, L. M. Sholl, I. Ben-Aharon, A. H. Beck, D. Dias-Santagata, M. Koeva, S. M. Stemmer, L. Whitesell and S. Lindquist, *Cell*, 2014, **158**, 564–578.
- 142 Y. Kojima, A. Acar, E. N. Eaton, K. T. Mellody, C. Scheel, I. Ben-Porath, T. T. Onder, Z. C. Wang, A. L. Richardson, R. A. Weinberg and A. Orimo, *Proc. Natl. Acad. Sci. U. S. A.*, 2010, **107**, 20009–20014.
- 143 T. Liu, L. Zhou, D. Li, T. Andl and Y. Zhang, *Front. Cell Dev. Biol.*, 2019, **7**, 60.
- 144 M. E. Fiori, S. Di Franco, L. Villanova, P. Bianca, G. Stassi and R. De Maria, *Mol. Cancer*, 2019, **18**, 70.
- 145 E. Y. Lau, J. Lo, B. Y. Cheng, M. K. Ma, J. M. Lee, J. K. Ng, S. Chai, C. H. Lin, S. Y. Tsang, S. Ma, I. O. Ng and T. K. Lee, *Cell Rep.*, 2016, **15**, 1175–1189.
- 146 W. J. Chen, C. C. Ho, Y. L. Chang, H. Y. Chen, C. A. Lin, T. Y. Ling, S. L. Yu, S. S. Yuan, Y. J. Chen, C. Y. Lin, S. H. Pan, H. Y. Chou, Y. J. Chen, G. C. Chang, W. C. Chu, Y. M. Lee, J. Y. Lee, P. J. Lee, K. C. Li, H. W. Chen and P. C. Yang, *Nat. Commun.*, 2014, **5**, 3472.
- 147 X. Long, W. Xiong, X. Zeng, L. Qi, Y. Cai, M. Mo, H. Jiang, B. Zhu, Z. Chen and Y. Li, *Cell Death Dis.*, 2019, **10**, 375.
- 148 T. Liu, C. Han, S. Wang, P. Fang, Z. Ma, L. Xu and R. Yin, *J. Hematol. Oncol.*, 2019, **12**, 86.
- 149 L. Monteran and N. Erez, *Front. Immunol.*, 2019, **10**, 1835.
- 150 H. Takahashi, K. Sakakura, T. Kudo, M. Toyoda, K. Kaira, T. Oyama and K. Chikamatsu, *Oncotarget*, 2017, **8**, 8633–8647.
- 151 R. Zhang, F. Qi, F. Zhao, G. Li, S. Shao, X. Zhang, L. Yuan and Y. Feng, *Cell Death Dis.*, 2019, **10**, 273–273.
- 152 Z. Li, J. Zhou, J. Zhang, S. Li, H. Wang and J. Du, *Int. J. Cancer*, 2019, **145**, 1946–1957.
- 153 B. G. Yavuz, G. Gunaydin, M. E. Gedik, K. Kosemehmetoglu, D. Karakoc, F. Ozgur and D. Guc, *Sci. Rep.*, 2019, **9**, 3172.
- 154 R. J. Seager, C. Hajal, F. Spill, R. D. Kamm and M. H. Zaman, *Convergent Sci. Phys. Oncol.*, 2017, **3**, 034002.
- 155 Y. An, F. Liu, Y. Chen and Q. Yang, *J. Cell. Mol. Med.*, 2020, **24**, 13–24.
- 156 Y. Jiang, Y. Li and B. Zhu, *Cell Death Dis.*, 2015, **6**, e1792–e1792.
- 157 T. Kitamura, D. Doughty-Shenton, L. Cassetta, S. Fragkogianni, D. Brownlie, Y. Kato, N. Carragher and J. W. Pollard, *Front. Immunol.*, 2018, **8**, 2004.
- 158 H. Gonzalez, C. Hagerling and Z. Werb, *Genes Dev.*, 2018, **32**, 1267–1284.
- 159 F. Balkwill and A. Mantovani, *Lancet*, 2001, **357**, 539–545.
- 160 L. M. Coussens and Z. Werb, *Nature*, 2002, **420**, 860–867.
- 161 F. R. Greten and S. I. Grivennikov, *Immunity*, 2019, **51**, 27–41.
- 162 S. I. Grivennikov, F. R. Greten and M. Karin, *Cell*, 2010, **140**, 883–899.
- 163 S. K. Biswas, A. Sica and C. E. Lewis, *J. Immunol.*, 2008, **180**, 2011–2017.
- 164 N. Bercovici, M. V. Guérin, A. Trautmann and E. Donnadieu, *Front. Immunol.*, 2019, **10**, 1563.
- 165 S. Wan, E. Zhao, I. Kryczek, L. Vatan, A. Sadovskaya, G. Ludema, D. M. Simeone, W. Zou and T. H. Welling, *Gastroenterology*, 2014, **147**, 1393–1404.
- 166 T. Nagasaki, M. Hara, H. Nakanishi, H. Takahashi, M. Sato and H. Takeyama, *Br. J. Cancer*, 2014, **110**, 469–478.
- 167 M. Walter, S. Liang, S. Ghosh, P. J. Hornsby and R. Li, *Oncogene*, 2009, **28**, 2745–2755.
- 168 X. Wu, P. Tao, Q. Zhou, J. Li, Z. Yu, X. Wang, J. Li, C. Li, M. Yan, Z. Zhu, B. Liu and L. Su, *Oncotarget*, 2017, **8**, 20741–20750.
- 169 D. E. Johnson, R. A. O’Keefe and J. R. Grandis, *Nat. Rev. Clin. Oncol.*, 2018, **15**, 234–248.
- 170 L. Kong, Y. Zhou, H. Bu, T. Lv, Y. Shi and J. Yang, *J. Exp. Clin. Cancer Res.*, 2016, **35**, 131.
- 171 D. T. Fisher, M. M. Appenheimer and S. S. Evans, *Semin. Immunol.*, 2014, **26**, 38–47.
- 172 X. Tang, C. Mo, Y. Wang, D. Wei and H. Xiao, *Immunology*, 2013, **138**, 93–104.
- 173 C. Anfray, A. Ummerino, F. T. Andón and P. Allavena, *Cells*, 2019, **9**, 46.
- 174 Z. Zhang, S. Liu, B. Zhang, L. Qiao, Y. Zhang and Y. Zhang, *Front. Cell Dev. Biol.*, 2020, **8**, 17.
- 175 S. E. Stanton and M. L. Disis, *J. ImmunoTher. Cancer*, 2016, **4**, 59.
- 176 G. P. Linette and B. M. Carreno, *Curr. Hematol. Malig. Rep.*, 2019, **14**, 286–291.
- 177 L. Barrueto, F. Caminero, L. Cash, C. Makris, P. Lamichhane and R. R. Deshmukh, *Transl. Oncol.*, 2020, **13**, 100738.
- 178 M. Chapon, C. Randriamampita, E. Maubec, C. Badoual, S. Fouquet, S.-F. Wang, E. Marinho, D. Farhi, M. Garcette, S. Jacobelli, A. Rouquette, A. Carlotti, A. Girod, A. Prévost-Blondel, A. Trautmann, M.-F. Avril and N. Bercovici, *J. Invest. Dermatol.*, 2011, **131**, 1300–1307.
- 179 A. J. Korman, K. S. Peggs and J. P. Allison, *Adv. Immunol.*, 2006, **90**, 297–339.
- 180 S. C. Wei, C. R. Duffy and J. P. Allison, *Cancer Discovery*, 2018, **8**, 1069–1086.
- 181 J. Zhang, X. Zhong, H. Jiang, H. Jiang, T. Xie, Y. Tian, R. Li, B. Wang, J. Zhang and Y. Yuan, *Aging*, 2020, **12**, 22509–22526.
- 182 M. Yu, G. Guo, L. Huang, L. Deng, C. S. Chang, B. R. Achyut, M. Canning, N. Xu, A. S. Arbab, R. J. Bollag,

- P. C. Rodriguez, A. L. Mellor, H. Shi, D. H. Munn and Y. Cui, *Nat. Commun.*, 2020, **11**, 515.
- 183 Y. Li, J. Liu, L. Gao, Y. Liu, F. Meng, X. Li and F. X. Qin, *Immunol. Lett.*, 2020, **220**, 88–96.
- 184 L. Laplane, D. Duluc, A. Bikfalvi, N. Larmonier and T. Pradeu, *Int. J. Cancer*, 2019, **145**, 2611–2618.
- 185 D. F. Quail and J. A. Joyce, *Nat. Med.*, 2013, **19**, 1423–1437.
- 186 D. A. Senthebane, A. Rowe, N. E. Thomford, H. Shipanga, D. Munro, M. Mazeedi, H. A. M. Almazyadi, K. Kallmeyer, C. Dandara, M. S. Pepper, M. I. Parker and K. Dzobo, *Int. J. Mol. Sci.*, 2017, **18**, 1586.
- 187 K. Dzobo, *Omics*, 2020, **24**, 175–179.
- 188 T. Dey, *Integr. Biol.*, 2020, DOI: 10.1093/intbio/zyaa023.
- 189 M. Devarasetty, S. D. Forsythe, E. Shelkey and S. Soker, *Tissue Eng. Regener. Med.*, 2020, **17**, 759–771.
- 190 H. Jaganathan, J. Gage, F. Leonard, S. Srinivasan, G. R. Souza, B. Dave and B. Godin, *Sci. Rep.*, 2014, **4**, 6468.
- 191 I. Yakavets, S. Jenard, A. Francois, Y. Maklygina, V. Loschenov, H. P. Lassalle, G. Dolivet and L. Bezdetnaya, *J Clin Med*, 2019, **8**, 1686.
- 192 M. Durymanov, C. Kroll, A. Permyakova, E. O'Neill, R. Sulaiman, M. Person and J. Reineke, *Transl Oncol*, 2019, **12**, 180–189.
- 193 J. Lee, D. Shin and J. L. Roh, *Theranostics*, 2018, **8**, 3964–3973.
- 194 D. Zboralski and A. Frömming, *Methods Mol. Biol.*, 2019, **1884**, 269–281.
- 195 M. J. Lamberti, M. Rettel, J. Krijgsveld, V. A. Rivarola and N. B. Rumie Vittar, *Cell. Oncol.*, 2019, **42**, 173–196.
- 196 Q. Gao, Z. Yang, S. Xu, X. Li, X. Yang, P. Jin, Y. Liu, X. Zhou, T. Zhang, C. Gong, X. Wei, D. Liu, C. Sun, G. Chen, J. Hu, L. Meng, J. Zhou, K. Sawada, R. Fruscio, T. W. Grunt, J. Wischhusen, V. M. Vargas-Hernández, B. Pothuri and R. L. Coleman, *J. Exp. Med.*, 2019, **216**, 688–703.
- 197 P. Brun, M. Dettin, L. G. Campana, F. Dughiero, P. Sgarbossa, C. Bernardello, A. L. Tosi, A. Zamuner and E. Sieni, *Bioelectrochemistry*, 2019, **125**, 15–24.
- 198 I. M. Adjei and S. Blanka, *J. Funct. Biomater.*, 2015, **6**, 81–103.
- 199 M. E. Lombardo, F. Carfi Pavia, I. Vitranò, G. Ghersi, V. Brucato, F. Rosei and V. La Carrubba, *Tissue Cell*, 2019, **58**, 33–41.
- 200 J. Li, Y. Zhou, W. Chen, Z. Yuan, B. You, Y. Liu, S. Yang, F. Li, C. Qu and X. Zhang, *ACS Appl. Mater. Interfaces*, 2018, **10**, 36641–36651.
- 201 T. Rodrigues, B. Kundu, J. Silva-Correia, S. C. Kundu, J. M. Oliveira, R. L. Reis and V. M. Correlo, *Pharmacol. Ther.*, 2018, **184**, 201–211.
- 202 H. Ma, C. Feng, J. Chang and C. Wu, *Acta Biomater.*, 2018, **79**, 37–59.
- 203 D. Karami, N. Richbourg and V. Sikavitsas, *Cancer Lett.*, 2019, **449**, 178–185.
- 204 J. A. Belgodere, C. T. King, J. B. Bursavich, M. E. Burow, E. C. Martin and J. P. Jung, *Front. Bioeng. Biotechnol.*, 2018, **6**, 66.
- 205 V. Brancato, J. M. Oliveira, V. M. Correlo, R. L. Reis and S. C. Kundu, *Biomaterials*, 2020, **232**, 119744.
- 206 P. S. Thakuri, C. Liu, G. D. Luker and H. Tavana, *Adv. Healthcare Mater.*, 2018, **7**, e1700980.
- 207 G. Rijal and W. Li, *Biomaterials*, 2016, **81**, 135–156.
- 208 M. Guvendiren and J. A. Burdick, *Curr. Opin. Biotechnol.*, 2013, **24**, 841–846.
- 209 O. Chaudhuri, *Biomater. Sci.*, 2017, **5**, 1480–1490.
- 210 C. Y. Liaw, S. Ji and M. Guvendiren, *Adv. Healthcare Mater.*, 2018, **7**, 4.
- 211 G. Jose, K. T. Shalumon and J. P. Chen, *Curr. Med. Chem.*, 2020, **27**, 2734–2776.
- 212 C. Fuss, J. C. Palmaz and E. A. Sprague, *J. Vasc. Interv. Radiol.*, 2001, **12**, 677–682.
- 213 A. D. Augst, H. J. Kong and D. J. Mooney, *Macromol. Biosci.*, 2006, **6**, 623–633.
- 214 R. M. Salaszyk, W. A. Williams, A. Boskey, A. Batorsky and G. E. Plopper, *J. Biomed. Biotechnol.*, 2004, **2004**, 24–34.
- 215 I. Arnaoutova, J. George, H. K. Kleinman and G. Benton, *Stem Cell Rev. Rep.*, 2012, **8**, 163–169.
- 216 R. Tanaka, Y. Saito, Y. Fujiwara, J. I. Jo and Y. Tabata, *Acta Biomater.*, 2019, **89**, 152–165.
- 217 G. Benton, I. Arnaoutova, J. George, H. K. Kleinman and J. Koblinkski, *Adv. Drug Delivery Rev.*, 2014, **79–80**, 3–18.
- 218 G. Rossi, A. Manfrin and M. P. Lutolf, *Nat. Rev. Genet.*, 2018, **19**, 671–687.
- 219 S. F. Boj, C. I. Hwang, L. A. Baker, I. I. Chio, D. D. Engle, V. Corbo, M. Jager, M. Ponz-Sarvisé, H. Tiriác, M. S. Spector, A. Gracanin, T. Oni, K. H. Yu, R. van Bortel, M. Huch, K. D. Rivera, J. P. Wilson, M. E. Feigin, D. Ohlund, A. Handly-Santana, C. M. Ardito-Abraham, M. Ludwig, E. Elyada, B. Alagesan, G. Biffi, G. N. Yordanov, B. Delcuze, B. Creighton, K. Wright, Y. Park, F. H. Morsink, I. Q. Molenaar, I. H. Borel Rinkes, E. Cuppen, Y. Hao, Y. Jin, I. J. Nijman, C. Iacobuzio-Donahue, S. D. Leach, D. J. Pappin, M. Hammell, D. S. Klimstra, O. Basturk, R. H. Hruban, G. J. Offerhaus, R. G. Vries, H. Clevers and D. A. Tuveson, *Cell*, 2015, **160**, 324–338.
- 220 O. Kopper, C. J. de Witte, K. Lohmussaar, J. E. Valle-Inclán, N. Hami, L. Kester, A. V. Balgobind, J. Korving, N. Proost, H. Begthel, L. M. van Wijk, S. A. Revilla, R. Theeuwssen, M. van de Ven, M. J. van Roosmalen, B. Ponsioen, V. W. H. Ho, B. G. Neel, T. Bosse, K. N. Gaarenstroom, H. Vrieling, M. P. G. Vreeswijk, P. J. van Diest, P. O. Witteveen, T. Jonges, J. L. Bos, A. van Oudenaarden, R. P. Zweemer, H. J. G. Snippert, W. P. Kloosterman and H. Clevers, *Nat. Med.*, 2019, **25**, 838–849.
- 221 H. Dolznig, C. Rupp, C. Puri, C. Haslinger, N. Schweifer, E. Wieser, D. Kerjaschki and P. Garin-Chesa, *Am. J. Pathol.*, 2011, **179**, 487–501.
- 222 D. Yip and C. H. Cho, *Biochem. Biophys. Res. Commun.*, 2013, **433**, 327–332.
- 223 A. Nyga, M. Loizidou, M. Emberton and U. Cheema, *Acta Biomater.*, 2013, **9**, 7917–7926.

- 224 N. Bayat, R. Izadpanah, S. Ebrahimi-Barough, A. Norouzi Javidan, A. Ai, M. M. Mokhtari Ardakan, H. Saberi and J. Ai, *Asian Pac. J. Cancer Prev.*, 2018, **19**, 2553–2560.
- 225 P. Sun, Y. Xu, X. Du, N. Ning, H. Sun, W. Liang and R. Li, *Oncol. Lett.*, 2013, **5**, 489–494.
- 226 R. Timpl, G. R. Martin, P. Bruckner, G. Wick and H. Wiedemann, *Eur. J. Biochem.*, 1978, **84**, 43–52.
- 227 H. K. Kleinman and G. R. Martin, *Semin. Cancer Biol.*, 2005, **15**, 378–386.
- 228 D. J. Carey, M. S. Todd and C. M. Rafferty, *J. Cell Biol.*, 1986, **102**, 2254–2263.
- 229 M. A. Hadley, S. W. Byers, C. A. Suárez-Quian, H. K. Kleinman and M. Dym, *J. Cell Biol.*, 1985, **101**, 1511–1522.
- 230 M. C. Kibbey, L. S. Royce, M. Dym, B. J. Baum and H. K. Kleinman, *Exp. Cell Res.*, 1992, **198**, 343–351.
- 231 R. F. Nicosia and A. Ottinetti, *In Vitro Cell. Dev. Biol.*, 1990, **26**, 119–128.
- 232 C. Oliver, J. F. Waters, C. L. Tolbert and H. K. Kleinman, *J. Dent. Res.*, 1987, **66**, 594–595.
- 233 B. Chevallay and D. Herbage, *Med. Biol. Eng. Comput.*, 2000, **38**, 211–218.
- 234 M. K. Gordon and R. A. Hahn, *Cell Tissue Res.*, 2010, **339**, 247–257.
- 235 M. D. Shoulders and R. T. Raines, *Annu. Rev. Biochem.*, 2009, **78**, 929–958.
- 236 D. E. Kuczek, A. M. H. Larsen, M. L. Thorseth, M. Carretta, A. Kalvisa, M. S. Siersbaek, A. M. C. Simoes, A. Roslind, L. H. Engelholm, E. Noessner, M. Donia, I. M. Svane, P. T. Straten, L. Grontved and D. H. Madsen, *J. Immunother. Cancer*, 2019, **7**, 68.
- 237 J. Liu, Y. Tan, H. Zhang, Y. Zhang, P. Xu, J. Chen, Y. C. Poh, K. Tang, N. Wang and B. Huang, *Nat. Mater.*, 2012, **11**, 734–741.
- 238 M. W. Mosesson, *J. Thromb. Haemostasis*, 2005, **3**, 1894–1904.
- 239 D. W. Infanger, M. E. Lynch and C. Fischbach, *Annu. Rev. Biomed. Eng.*, 2013, **15**, 29–53.
- 240 P. Ngo, P. Ramalingam, J. A. Phillips and G. T. Furuta, *Methods Mol. Biol.*, 2006, **341**, 103–109.
- 241 B. J. Gill and J. L. West, *J. Biomech.*, 2014, **47**, 1969–1978.
- 242 S. H. Lang, R. M. Sharrard, M. Stark, J. M. Villette and N. J. Maitland, *Br. J. Cancer*, 2001, **85**, 590–599.
- 243 M. Alemany-Ribes and C. E. Semino, *Adv. Drug Delivery Rev.*, 2014, **79–80**, 40–49.
- 244 S. P. Singh, M. P. Schwartz, E. Y. Tokuda, Y. Luo, R. E. Rogers, M. Fujita, N. G. Ahn and K. S. Anseth, *Sci. Rep.*, 2015, **5**, 17814.
- 245 C. Wang, X. Tong and F. Yang, *Mol. Pharm.*, 2014, **11**, 2115–2125.
- 246 S. Nam, R. Stowers, J. Lou, Y. Xia and O. Chaudhuri, *Biomaterials*, 2019, **200**, 15–24.
- 247 Y. Zhang, D. An, Y. Pardo, A. Chiu, W. Song, Q. Liu, F. Zhou, S. P. McDonough and M. Ma, *Acta Biomater.*, 2017, **53**, 100–108.
- 248 V. Hagel, T. Haraszti and H. Boehm, *Biointerphases*, 2013, **8**, 36.
- 249 C. Diaferia, M. Ghosh, T. Sibillano, E. Gallo, M. Stornaiuolo, C. Giannini, G. Morelli, L. Adler-Abramovich and A. Accardo, *Soft Matter*, 2019, **15**, 487–496.
- 250 Y. Deng, A. X. Sun, K. J. Overholt, G. Z. Yu, M. R. Fritch, P. G. Alexander, H. Shen, R. S. Tuan and H. Lin, *Acta Biomater.*, 2019, **83**, 167–176.
- 251 C. C. Lin and K. S. Anseth, *Biomacromolecules*, 2009, **10**, 2460–2467.
- 252 L. Lu, S. Yuan, J. Wang, Y. Shen, S. Deng, L. Xie and Q. Yang, *Curr. Stem Cell Res. Ther.*, 2018, **13**, 490–496.
- 253 S. J. Buwalda, K. W. Boere, P. J. Dijkstra, J. Feijen, T. Vermonden and W. E. Hennink, *J. Controlled Release*, 2014, **190**, 254–273.
- 254 K. S. Hof and M. M. C. Bastings, *Chimia*, 2017, **71**, 342–348.
- 255 E. C. González-Díaz and S. Varghese, *Gels*, 2016, **2**, 20.
- 256 K. Vats and D. S. Benoit, *Tissue Eng., Part B*, 2013, **19**, 455–469.
- 257 S. Pradhan, I. Hassani, J. M. Clary and E. A. Lipke, *Tissue Eng., Part B*, 2016, **22**, 470–484.
- 258 S. Pradhan, I. Hassani, W. J. Seeto and E. A. Lipke, *J. Biomed. Mater. Res., Part A*, 2017, **105**, 236–252.
- 259 C. C. Lin and M. Korc, *Cancer Lett.*, 2018, **436**, 22–27.
- 260 L. David, V. Dulong, D. Le Cerf, C. Chauzy, V. Norris, B. Delpech, M. Lamacz and J. P. Vannier, *Matrix Biol.*, 2004, **23**, 183–193.
- 261 L. David, V. Dulong, D. Le Cerf, L. Cazin, M. Lamacz and J. P. Vannier, *Acta Biomater.*, 2008, **4**, 256–263.
- 262 S. Bonnesœur, S. Morin-Grognet, O. Thoumire, D. Le Cerf, O. Boyer, J. P. Vannier and B. Labat, *J. Biomed. Mater. Res., Part A*, 2020, **108**, 1256–1268.
- 263 T. Pouyani, G. S. Harbison and G. D. Prestwich, *J. Am. Chem. Soc.*, 1994, **116**, 7515–7522.
- 264 E. Ahmadian, S. M. Dizaj, A. Eftekhari, E. Dalir, P. Vahedi, A. Hasanzadeh and M. Samiei, *Drug Res.*, 2020, **70**, 6–11.
- 265 C. Chircov, A. M. Grumezescu and L. E. Bejenaru, *Rom. J. Morphol. Embryol.*, 2018, **59**, 71–76.
- 266 E. L. Fong, X. Wan, J. Yang, M. Morgado, A. G. Mikos, D. A. Harrington, N. M. Navone and M. C. Farach-Carson, *Biomaterials*, 2016, **77**, 164–172.
- 267 G. G. Giobbe, C. Crowley, C. Luni, S. Campinoti, M. Khedr, K. Kretschmar, M. M. De Santis, E. Zambaiti, F. Michielin, L. Meran, Q. Hu, G. van Son, L. Urbani, A. Manfredi, M. Giomo, S. Eaton, D. Cacchiarelli, V. S. W. Li, H. Clevers, P. Bonfanti, N. Elvassore and P. De Coppi, *Nat. Commun.*, 2019, **10**, 5658.
- 268 M. Saheli, M. Sepantafar, B. Pournasr, Z. Farzaneh, M. Vosough, A. Piryaee and H. Baharvand, *J. Cell. Biochem.*, 2018, **119**, 4320–4333.
- 269 P. A. Mollica, E. N. Booth-Creech, J. A. Reid, M. Zamponi, S. M. Sullivan, X. L. Palmer, P. C. Sachs and R. D. Bruno, *Acta Biomater.*, 2019, **95**, 201–213.
- 270 N. Broguiere, L. Isenmann, C. Hirt, T. Ringel, S. Placzek, E. Cavalli, F. Ringnalda, L. Villiger, R. Züllig, R. Lehmann, G. Rogler, M. H. Heim, J. Schüler, M. Zenobi-Wong and G. Schwank, *Adv. Mater.*, 2018, **30**, e1801621.

- 271 N. Gjorevski, N. Sachs, A. Manfrin, S. Giger, M. E. Bragina, P. Ordóñez-Morán, H. Clevers and M. P. Lutolf, *Nature*, 2016, **539**, 560–564.
- 272 G. Sorrentino, S. Rezakhani, E. Yildiz, S. Nuciforo, M. H. Heim, M. P. Lutolf and K. Schoonjans, *Nat. Commun.*, 2020, **11**, 3416.
- 273 F. Bergenheim, G. Fregni, C. F. Buchanan, L. B. Riis, M. Heulot, J. Touati, J. B. Seidelin, S. C. Rizzi and O. H. Nielsen, *Biomaterials*, 2020, **262**, 120248.
- 274 S. Ng, W. J. Tan, M. M. X. Pek, M. H. Tan and M. Kurisawa, *Biomaterials*, 2019, **219**, 119400.
- 275 L. Ma, L. Dong and P. Chang, *Cell Death Dis.*, 2019, **10**, 30.
- 276 Y. S. Jian, C. W. Chen, C. A. Lin, H. P. Yu, H. Y. Lin, M. Y. Liao, S. H. Wu, Y. F. Lin and P. S. Lai, *Int. J. Nanomed.*, 2017, **12**, 2315–2333.
- 277 M. Gavrilov, E. P. Gilbert, A. E. Rowan, J. Lauko and G. E. Yakubov, *Macromol. Rapid Commun.*, 2020, e2000304, DOI: 10.1002/marc.202000304.
- 278 P. H. Kouwer, M. Koepf, V. A. Le Sage, M. Jaspers, A. M. van Buul, Z. H. Eksteen-Akeroyd, T. Woltinge, E. Schwartz, H. J. Kitto, R. Hoogenboom, S. J. Picken, R. J. Nolte, E. Mendes and A. E. Rowan, *Nature*, 2013, **493**, 651–655.
- 279 R. K. Das, V. Gocheva, R. Hammink, O. F. Zouani and A. E. Rowan, *Nat. Mater.*, 2016, **15**, 318–325.
- 280 Y. Zhang, C. Tang, P. N. Span, A. E. Rowan, T. W. Aalders, J. A. Schalken, G. J. Adema, P. H. J. Kouwer, M. M. P. Zegers and M. Ansems, *Adv. Sci.*, 2020, **7**, 2001797.
- 281 F. Bertucci, P. Finetti and D. Birnbaum, *Curr. Mol. Med.*, 2012, **12**, 96–110.
- 282 S. Ye, J. W. B. Boeter, M. Mihajlovic, F. G. van Steenbeek, M. E. van Wolferen, L. A. Oosterhoff, A. Marsee, M. Caiazzo, L. J. W. van der Laan, L. C. Penning, T. Vermonden, B. Spee and K. Schneeberger, *Adv. Funct. Mater.*, 2020, **30**, 2000893.
- 283 N. Brandenburg, S. Hoehnel, F. Kuttler, K. Homicsko, C. Ceroni, T. Ringel, N. Gjorevski, G. Schwank, G. Coukos, G. Turcatti and M. P. Lutolf, *Nat. Biomed. Eng.*, 2020, **4**, 863–874.
- 284 V. Gkretsi and T. Stylianopoulos, *Front. Oncol.*, 2018, **8**, 145.
- 285 I. Jang and K. A. Beningo, *Cancers*, 2019, **11**, 721.
- 286 E. Jabbari, S. K. Sarvestani, L. Daneshian and S. Moeinzadeh, *PLoS One*, 2015, **10**, e0132377.
- 287 L. J. Macdougall, K. L. Wiley, A. M. Kloxin and A. P. Dove, *Biomaterials*, 2018, **178**, 435–447.
- 288 A. Tirella, G. Mattei, M. La Marca, A. Ahluwalia and N. Tirelli, *Front. Bioeng. Biotechnol.*, 2020, **8**, 208.
- 289 H. Y. Liu, T. Greene, T. Y. Lin, C. S. Dawes, M. Korc and C. C. Lin, *Acta Biomater.*, 2017, **48**, 258–269.
- 290 M. J. Paszek, N. Zahir, K. R. Johnson, J. N. Lakins, G. I. Rozenberg, A. Gefen, C. A. Reinhart-King, S. S. Margulies, M. Dembo, D. Boettiger, D. A. Hammer and V. M. Weaver, *Cancer Cell*, 2005, **8**, 241–254.
- 291 K. R. Levental, H. Yu, L. Kass, J. N. Lakins, M. Egeblad, J. T. Erler, S. F. Fong, K. Csiszar, A. Giaccia, W. Weninger, M. Yamauchi, D. L. Gasser and V. M. Weaver, *Cell*, 2009, **139**, 891–906.
- 292 X. Yue, T. D. Nguyen, V. Zellmer, S. Zhang and P. Zorlutuna, *Biomaterials*, 2018, **170**, 37–48.
- 293 J. T. Kaifi, E. F. Yekebas, P. Schurr, D. Obonyo, R. Wachowiak, P. Busch, A. Heinecke, K. Pantel and J. R. Izibicki, *J. Natl. Cancer Inst.*, 2005, **97**, 1840–1847.
- 294 L. R. Patel, D. F. Camacho, Y. Shiozawa, K. J. Pienta and R. S. Taichman, *Future Oncol.*, 2011, **7**, 1285–1297.
- 295 R. J. Eddy, M. D. Weidmann, V. P. Sharma and J. S. Condeelis, *Trends Cell Biol.*, 2017, **27**, 595–607.
- 296 F. Sabeh, R. Shimizu-Hirota and S. J. Weiss, *J. Cell Biol.*, 2009, **185**, 11–19.
- 297 K. Wolf, M. Te Lindert, M. Krause, S. Alexander, J. Te Riet, A. L. Willis, R. M. Hoffman, C. G. Figdor, S. J. Weiss and P. Friedl, *J. Cell Biol.*, 2013, **201**, 1069–1084.
- 298 M. Wang, Y. Yang, L. Han, S. Han, N. Liu, F. Xu and F. Li, *Biochem. Biophys. Res. Commun.*, 2020, **528**, 459–465.
- 299 A. J. Berger, C. M. Renner, I. Hale, X. Yang, S. M. Ponik, P. S. Weisman, K. S. Masters and P. K. Kreeger, *Matrix Biol.*, 2020, **85–86**, 80–93.
- 300 R. S. Stowers, S. C. Allen, K. Sanchez, C. L. Davis, N. D. Ebel, C. Van Den Berg and L. J. Suggs, *Cell. Mol. Bioeng.*, 2017, **10**, 114–123.
- 301 C. Liu, D. Lewin Mejia, B. Chiang, K. E. Luker and G. D. Luker, *Acta Biomater.*, 2018, **75**, 213–225.
- 302 C. Liu, B. Chiang, D. Lewin Mejia, K. E. Luker, G. D. Luker and A. Lee, *Acta Biomater.*, 2019, **83**, 221–232.
- 303 K. M. Wisdom, K. Adebawale, J. Chang, J. Y. Lee, S. Nam, R. Desai, N. S. Rossen, M. Rafat, R. B. West, L. Hodgson and O. Chaudhuri, *Nat. Commun.*, 2018, **9**, 4144.
- 304 K. Chwalek, M. V. Tsurkan, U. Freudenberger and C. Werner, *Sci. Rep.*, 2014, **4**, 4414.
- 305 L. J. Bray, M. Binner, A. Holzheu, J. Friedrichs, U. Freudenberger, D. W. Hutmacher and C. Werner, *Biomaterials*, 2015, **53**, 609–620.
- 306 A. V. Taubenberger, L. J. Bray, B. Haller, A. Shaposhnikov, M. Binner, U. Freudenberger, J. Guck and C. Werner, *Acta Biomater.*, 2016, **36**, 73–85.
- 307 M. T. Ngo and B. A. Harley, *Adv. Healthcare Mater.*, 2017, **6**, 1700687.
- 308 M. T. Ngo and B. A. C. Harley, *Biomaterials*, 2019, **198**, 122–134.
- 309 X. Cui, R. T. Morales, W. Qian, H. Wang, J. P. Gagner, I. Dolgalev, D. Placantonakis, D. Zagzag, L. Cimmino, M. Snuderl, R. H. W. Lam and W. Chen, *Biomaterials*, 2018, **161**, 164–178.
- 310 L. C. Roudsari, S. E. Jeffs, A. S. Witt, B. J. Gill and J. L. West, *Sci. Rep.*, 2016, **6**, 32726.
- 311 E. Sahai, I. Astsaturov, E. Cukierman, D. G. DeNardo, M. Egeblad, R. M. Evans, D. Fearon, F. R. Greten, S. R. Hingorani, T. Hunter, R. O. Hynes, R. K. Jain, T. Janowitz, C. Jorgensen, A. C. Kimmelman, M. G. Kolonin, R. G. Maki, R. S. Powers, E. Puré, D. C. Ramirez, R. Scherz-Shouval, M. H. Sherman, S. Stewart, T. D. Tlsty, D. A. Tuveson, F. M. Watt,

- V. Weaver, A. T. Weeraratna and Z. Werb, *Nat. Rev. Cancer*, 2020, **20**, 174–186.
- 312 C. Sazeides and A. Le, *Adv. Exp. Med. Biol.*, 2018, **1063**, 149–165.
- 313 H. Cao, M. K. H. Lee, H. Yang, S. K. Sze, N. S. Tan and C. Y. Tay, *Langmuir*, 2019, **35**, 7487–7495.
- 314 H. Neuwirt, J. Bouchal, G. Kharashvili, C. Ploner, K. Jöhrer, F. Pitterl, A. Weber, H. Klocker and I. E. Eder, *Cell Commun. Signaling*, 2020, **18**, 11.
- 315 D. Truong, J. Puleo, A. Llave, G. Mouneimne, R. D. Kamm and M. Nikkhah, *Sci. Rep.*, 2016, **6**, 34094.
- 316 C. Gaggioli, S. Hooper, C. Hidalgo-Carcedo, R. Grosse, J. F. Marshall, K. Harrington and E. Sahai, *Nat. Cell Biol.*, 2007, **9**, 1392–1400.
- 317 D. Rodenhizer, E. Gaude, D. Cojocari, R. Mahadevan, C. Frezza, B. G. Wouters and A. P. McGuigan, *Nat. Mater.*, 2016, **15**, 227–234.
- 318 A. Mondal, A. Gebeyehu, M. Miranda, D. Bahadur, N. Patel, S. Ramakrishnan, A. K. Rishi and M. Singh, *Sci. Rep.*, 2019, **9**, 19914.
- 319 J. S. McLane and L. A. Ligon, *Cancer Microenviron.*, 2016, **9**, 127–139.
- 320 G. Camci-Unal, D. Newsome, B. K. Eustace and G. M. Whitesides, *Adv. Healthcare Mater.*, 2016, **5**, 641–647, 626.
- 321 M. Young, D. Rodenhizer, T. Dean, E. D'Arcangelo, B. Xu, L. Ailles and A. P. McGuigan, *Biomaterials*, 2018, **164**, 54–69.
- 322 E. D'Arcangelo, N. C. Wu, T. Chen, A. Shahaj, J. L. Cadavid, L. Huang, L. Ailles and A. P. McGuigan, *Biomaterials*, 2020, **228**, 119572.
- 323 X. Luo, E. L. S. Fong, C. Zhu, Q. X. X. Lin, M. Xiong, A. Li, T. Li, T. Benoukraf, H. Yu and S. Liu, *Acta Biomater.*, 2020, DOI: 10.1016/j.actbio.2020.12.03733388439.
- 324 D. Öhlund, A. Handly-Santana, G. Biffi, E. Elyada, A. S. Almeida, M. Ponz-Sarvise, V. Corbo, T. E. Oni, S. A. Hearn, E. J. Lee, I. I. Chio, C. I. Hwang, H. Tiriak, L. A. Baker, D. D. Engle, C. Feig, A. Kultti, M. Egeblad, D. T. Fearon, J. M. Crawford, H. Clevers, Y. Park and D. A. Tuveson, *J. Exp. Med.*, 2017, **214**, 579–596.
- 325 M. K. Koch, A. Jaeschke, B. Murekatete, A. Ravichandran, M. Tsurkan, C. Werner, P. Soon, D. W. Huttmacher, L. M. Haupt and L. J. Bray, *Acta Biomater.*, 2020, **114**, 256–269.
- 326 E. J. Hoffmann and S. M. Ponik, *Front. Oncol.*, 2020, **10**, 787.
- 327 N. B. Hao, M. H. Lü, Y. H. Fan, Y. L. Cao, Z. R. Zhang and S. M. Yang, *Clin. Dev. Immunol.*, 2012, **2012**, 948098.
- 328 Q. Yang, N. Guo, Y. Zhou, J. Chen, Q. Wei and M. Han, *Acta Pharm. Sin. B*, 2020, **10**(11), 2156–2170.
- 329 B. H. Cha, S. R. Shin, J. Leijten, Y. C. Li, S. Singh, J. C. Liu, N. Annabi, R. Abdi, M. R. Dokmeci, N. E. Vrana, A. M. Ghaemmaghami and A. Khademhosseini, *Adv. Healthcare Mater.*, 2017, **6**, 1700289.
- 330 M. Court, M. Malier and A. Millet, *Biomaterials*, 2019, **208**, 98–109.
- 331 K. M. Tevis, R. J. Cecchi, Y. L. Colson and M. W. Grinstaff, *Acta Biomater.*, 2017, **50**, 271–279.
- 332 Y. Huang, Q. Feng, H. Jiang, W. Zhou, J. Chen, J. Gao, K. Wang, X. Wan and Y. Yu, *Int. J. Nanomed.*, 2020, **15**, 4625–4637.
- 333 S. Davidson, M. Efremova, A. Riedel, B. Mahata, J. Pramanik, J. Huuhtanen, G. Kar, R. Vento-Tormo, T. Hagai, X. Chen, M. A. Haniffa, J. D. Shields and S. A. Teichmann, *Cell Rep.*, 2020, **31**, 107628.
- 334 F. H. Brasil da Costa, M. S. Lewis, A. Truong, D. D. Carson and M. C. Farach-Carson, *PLoS One*, 2020, **15**, e0230354.
- 335 S. P. Rebelo, C. Pinto, T. R. Martins, N. Harrer, M. F. Estrada, P. Loza-Alvarez, J. Cabeçadas, P. M. Alves, E. J. Gualda, W. Sommergruber and C. Brito, *Biomaterials*, 2018, **163**, 185–197.
- 336 D. M. Pardoll, *Nat. Rev. Cancer*, 2012, **12**, 252–264.
- 337 A. Kalbasi and A. Ribas, *Nat. Rev. Immunol.*, 2020, **20**, 25–39.
- 338 K. K. Dijkstra, C. M. Cattaneo, F. Weeber, M. Chalabi, J. van de Haar, L. F. Fanchi, M. Slagter, D. L. van der Velden, S. Kaing, S. Kelderman, N. van Rooij, M. E. van Leerdam, A. Depla, E. F. Smit, K. J. Hartemink, R. de Groot, M. C. Wolkers, N. Sachs, P. Snaebjornsson, K. Monkhorst, J. Haanen, H. Clevers, T. N. Schumacher and E. E. Voest, *Cell*, 2018, **174**, 1586–1598.
- 339 C. M. Cattaneo, K. K. Dijkstra, L. F. Fanchi, S. Kelderman, S. Kaing, N. van Rooij, S. van den Brink, T. N. Schumacher and E. E. Voest, *Nat. Protoc.*, 2020, **15**, 15–39.
- 340 E. Pérez Del Río, F. Santos, X. Rodriguez Rodriguez, M. Martínez-Miguel, R. Roca-Pinilla, A. Arís, E. Garcia-Fruitós, J. Veciana, J. P. Spatz, I. Ratera and J. Guasch, *Biomaterials*, 2020, **259**, 120313.
- 341 J. Kim, B. Wu, S. M. Niedzielski, M. T. Hill, R. M. Coleman, A. Ono and A. Shikanov, *J. Biomed. Mater. Res., Part A*, 2015, **103**, 2701–2710.
- 342 J. K. Kim, Y. J. Shin, L. J. Ha, D. H. Kim and D. H. Kim, *Adv. Healthcare Mater.*, 2019, **8**, e1801332.
- 343 R. E. Vickman, D. V. Faget, P. Beachy, D. Beebe, N. A. Bhowmick, E. Cukierman, W. M. Deng, J. G. Granneman, J. Hildesheim, R. Kalluri, K. S. Lau, E. Lengyel, J. Lundeberg, J. Moscat, P. S. Nelson, K. Pietras, K. Politi, E. Puré, R. Scherz-Shouval, M. H. Sherman, D. Tuveson, A. T. Weeraratna, R. M. White, M. H. Wong, E. C. Woodhouse, Y. Zheng, S. W. Hayward and S. A. Stewart, *Oncotarget*, 2020, **11**, 3621–3632.
- 344 S. Brassart-Pasco, S. Brézillon, B. Brassart, L. Ramont, J. B. Oudart and J. C. Monboisse, *Front. Oncol.*, 2020, **10**, 397.
- 345 O. Chaudhuri, L. Gu, M. Darnell, D. Klumpers, S. A. Bencherif, J. C. Weaver, N. Huebsch and D. J. Mooney, *Nat. Commun.*, 2015, **6**, 6364.

- 346 H. Salmon, K. Franciszekiewicz, D. Damotte, M. C. Dieu-Nosjean, P. Validire, A. Trautmann, F. Mami-Chouaib and E. Donnadieu, *J. Clin. Invest.*, 2012, **122**, 899–910.
- 347 A. L. Ji, A. J. Rubin, K. Thrane, S. Jiang, D. L. Reynolds, R. M. Meyers, M. G. Guo, B. M. George, A. Mollbrink, J. Bergenstr hle, L. Larsson, Y. Bai, B. Zhu, A. Bhaduri, J. M. Meyers, X. Rovira-Clav , S. T. Hollmig, S. Z. Aasi, G. P. Nolan, J. Lundeberg and P. A. Khavari, *Cell*, 2020, **182**, 497–514.
- 348 H. W. Jackson, J. R. Fischer, V. R. T. Zanutelli, H. R. Ali, R. Mechera, S. D. Soysal, H. Moch, S. Muenst, Z. Varga, W. P. Weber and B. Bodenmiller, *Nature*, 2020, **578**, 615–620.
- 349 S. Khetan and J. A. Burdick, *Soft Matter*, 2011, **7**, 830–838.