


 Cite this: *RSC Adv.*, 2020, 10, 6725

Exploration of production of C₁₄ and C₁₅ bacillomycin D homologues with enzymatic hydrolysis from maize straws using fed-batch fermentation by *Bacillus subtilis* NS-174

 Shiquan Qian,^{id}*^a Xuejin Li,^b Lu Sun,^c Yuanyuan Shen,^a Qingyi Ren,^a Enjie Diao^a and Zhaoxin Lu^d

A strain with strong antifungal activity, *Bacillus subtilis* NS-174, was identified and the antifungal compounds were purified and structurally analyzed by high performance liquid chromatography-mass spectrometry/mass spectrometry (HPLC-MS/MS). The effects of the enzymatic hydrolysis and the fermentation strategies on production of the antifungal compounds were also investigated. The results showed that the antifungal compounds were characterized to be C₁₄ and C₁₅ bacillomycin D homologues (C₁₄₋₁₅BDs). When 400 mL of the cellulase hydrolysates from the maize straws residues (CHMSRs) was fed into 1.0 L of the batch fermentation broth at 60 h, an output of C₁₄₋₁₅BDs (OC₁₄₋₁₅BDs) was obtained as 44.84 mg g_{maize straws}⁻¹. Moreover, the fed-batch fermentation was beneficial for the increase of the transcriptional activities of C₁₄₋₁₅BDs synthetase genes by up-regulating expression of *comA*, *sigmaH* and *spo0A*, which caused the elevation of C₁₄₋₁₅BDs production. The present work provided an effective solution for lipopeptide production in *Bacillus subtilis*.

 Received 15th December 2019
 Accepted 6th February 2020

DOI: 10.1039/c9ra10536k

rsc.li/rsc-advances

1. Introduction

The antifungal lipopeptides produced by bacteria, such as *Bacillus subtilis*¹ and *Bacillus amyloliquefaciens*,² were bioactive secondary metabolites that had strong inhibition effects on growth of agricultural fungi.^{1,3} The biosynthesis of antifungal lipopeptides was mainly regulated by the operon structure module of lipopeptide synthase.⁴ For example, the synthesis of bacillomycin D, a cyclic lipopeptide from the iturin family, was regulated by *bmyA*, *bmyB*, *bmyC*, *bmyD* and *TE*.⁵ In addition, the biosynthesis of the antifungal lipopeptides was also related to signal genes in *Bacillus subtilis*, such as *ComA*, *SigmaH* and *Spo0A*.^{4,5}

China produces a large amount of maize straws every year and the environmental problems caused by incineration and irrational treatment of maize straws are getting worse and worse.^{6,7} Therefore, how to rationally make use of maize straws

has attracted more and more attention. Enzymatic bioconversion technology provided a reliable way for the utilization of crop straw resources, due to its mild conditions, feasible operations and high selectivities.⁸ The maize straws were mainly composed of cellulose, hemicellulose and lignin⁹ and it was difficult for microorganisms to directly utilize crop straws. It was previously reported that maize straws could be efficiently converted into small reducing sugars by enzymatic hydrolysis.^{10,11} Microorganisms could commendably use these reducing sugars from crop straws as carbon sources to increase cell growth and ferment to useful target substances, such as bioethanol,¹² polysaccharides¹³ and microbial oil.¹⁴

In addition, the fed-batch fermentation was widely used in bio-fermentation because of its rapid accumulation of biomass and shortening fermentation cycle.^{15,16} Use of enzymatic hydrolysates from crop straws as fermentation substrates and optimization fermentation strategies could ulteriorly improve the biomass of microorganisms and the synthesis efficiency of target substances.¹⁷⁻²⁰ However, at present, there were no reports on production of antifungal lipopeptides from microorganisms using enzymatic hydrolysis of crop straws. The present work was aimed at production of antifungal lipopeptides by enzymatic hydrolysis process. Firstly, a strain with antifungal activity was isolated from the soil of Huai'an suburb and the structure of the antifungal compounds was analyzed and elucidated. Then, using maize straws as raw materials, the effects of cellulase enzymatic hydrolysis and fermentation

^aJiangsu Key Laboratory for Eco-Agricultural Biotechnology around Hongze Lake, Jiangsu Collaborative Innovation Center of Regional Modern Agriculture & Environmental Protection, Jiangsu Key Laboratory for Food Safety and Nutrition Function Evaluation, Huaiyin Normal University, Huaian 223300, China. E-mail: qianshq@163.com

^bSchool of Biological and Food Engineering, Bengbu University, Bengbu, 233030, China

^cSchool of Food and Biological Engineering, Jiangsu University, Zhenjiang, 212000, China

^dCollege of Food Science and Technology, Nanjing Agricultural University, 1 Weigang, Nanjing 210095, China



strategies on production of antifungal compounds were studied. Furthermore, the expression of synthase genes and related signal protein genes for biosynthesis of antifungal compounds were also explored.

2. Materials and methods

2.1 Raw materials and enzymes

The raw maize straws were harvested from the suburb of Huaian, China, and cut to a particle size of 1–3 mm after cleaned with tap water. Then, the straws were dried at 60 °C and pulverized to 60 mesh powder. The cellulase in this study was purchased from Sinopharm Chemical Reagent Co., Ltd, China, and the activity of the cellulase was 100 000 U g⁻¹.

2.2 Microorganisms and culture mediums

The sample strains isolated from wetland in the suburb of Huaian, China, were cultured in beef extract medium (BEM) at 37 °C. The BEM medium consisted of 3.0 g L⁻¹ beef extract, 10.0 g L⁻¹ peptone and 5.0 g L⁻¹ NaCl. The cellulase enzymatic hydrolyzates medium (CEHM) modified according to the Landy medium²¹ was used as the fermentation medium for producing C₁₄₋₁₅BDs. The CEHM medium consisted of yeast extract 1.0 g L⁻¹, L-glutamic acid 5.0 g L⁻¹, MgSO₄·7H₂O 0.5 g L⁻¹, KCl 0.5 g L⁻¹, MnSO₄·0.05 g L⁻¹, CuSO₄·5H₂O 0.0016 g L⁻¹, FeSO₄·7H₂O 0.0015 g L⁻¹, KH₂PO₄ 1.0 g L⁻¹, and 100 mL of enzymatic hydrolyzates. It was maintained at a pH 7.0 and a temperature of 121 °C, and was sterilized for 20 min.

2.3 Screening and identification of the strains with antifungal activities

The sample strains were cultured at 37 °C and 180 rpm for 24 h on Luria-Bertani (LB) medium containing 0.5 g L⁻¹ yeast extract, 1.0 g L⁻¹ tryptone, and 1.0 g L⁻¹ NaCl (pH 7.0). The single colonies were stochastically inoculated into 50 mL of BEM medium and shaken at 37 °C and 180 rpm for 16 h. 4% (v/v) of cultures was then fermented into the CEHM medium and cultivated at 33 °C and 180 rpm for 96 h. 20 mL of cultures was centrifuged at 10 000g at 4 °C for 20 min. The supernatants were filtered through 0.22 μm filters to prepare cell-free supernatants (CFSs). The antifungal activities of CFSs were assayed on a PDA agar, with *Aspergillus flavus* (CICC 2062) as the indicator strain. The antifungal activities were defined as the diameter of inhibition zone. The CFSs of strains with a significantly large inhibition zone were used as the selected strains. The molecular identification of the isolated strains was performed on basis of the phenotypical analysis.²² In detail, the genomic DNA was extracted according to the procedure of DNA extraction kit (Sangon, China) and its purity was detected on NanoDrop2000 (Thermo Scientific, USA). The universal 16S rRNA PCR primer including 16SF (5'-AGAGTTTGATCMTGGCTCAG-3') and 16SR (5'-TACGGYTACCTTGTACGACTT-3') was used to amplify 16S rRNA. A total volume of 30 μL PCR reaction solution contained 50 ng of genomic DNA, 3.0 μL of each primer, 0.2 μL of Taq DNA polymerase, 3.0 μL of 10 μM PCR buffer, 2.0 μL of 200 μM dNTP and 17.8 μL ddH₂O. The PCR program was 95 °C for 5 min,

followed by 35 cycles at 95 °C for 30 s, 55 °C for 30 s and 72 °C for 60 s, and 72 °C for 10 min.

The PCR products were purified using Omega Gel Extraction Kits (Omega, USA) and sequenced by BGI (Wuhan, China). The sequence alignment analysis²³ was carried out on the website of <https://blast.ncbi.nlm.nih.gov/Blast>. The phylogenetic tree was constructed and analyzed by the previous method using the software of MEGA5.²⁴

2.4 Isolation and structure characterization of the antifungal compounds

After 5000g of centrifugation, 30 mL of the fermentation broth supernatant was adjusted to a pH of 2.0 with 4 mol L⁻¹ of HCl and stayed at 4 °C for 120 min. After centrifugation, the precipitation was accumulated and extracted by 100% of methanol. The crude antifungal compounds were prepared by 10 000g of centrifugation. Then, the antifungal compounds were purified by a Sephadex LH-20 column and reverse-phase high performance liquid chromatography (RP-HPLC) (Waters 600, USA) with a C18 column (4.6 × 250 mm, Agilent, USA). The structure of the antifungal compounds and its concentration were analyzed and characterized by high performance liquid chromatography-mass spectrometry/mass spectrometry (HPLC-MS/MS) as described in the previous work.¹

2.5 Cellulase enzymatic hydrolysis

2 g of dry maize straw powders were sterilized at 121 °C for 20 min and cooled down to room temperature. The enzymatic hydrolysis was performed in a 100 mL conical flask. The sterilized powders were mixed with cellulase in 50 mL of reaction solution and the enzymatic hydrolysis was carried out at 50 °C and 180 rpm. After enzymolysis, the mixture was centrifuged at 8000g for 20 min. The cellulase hydrolysates from the maize straws residues (CHMSRs) were collected to prepare for the fermentation experiments. The maize straws residues were dried at 85 °C to a constant weight and quantified to calculate the consumption of maize straws (CMSs) (g). The reducing sugar content of CHMSRs was determined by the 2,4-dinitrosalicylate method using glucose as the standard.²⁵ The yield of reducing sugar (g g⁻¹) for CHMSRs (YRS-CHMSRs) (g g⁻¹) was defined as the ratio of the amount of reducing sugar in CHMSRs (g) to CMSs (g).

2.6 Fermentation process

The strain *B. subtilis* NS-174 was cultured in 100 mL of BEM medium and shaken at 37 °C and 200 rpm for 20 h to prepare the seed culture. 5% of seed culture was incubated into a 250 mL Erlenmeyer flask which contained 100 mL of CEHM medium to prepare for the flask fermentation. The batch fermentation was performed in a 5.0 L fermenter (GUJZ, Zhenjiang, China) with 1.0 L of CEHM medium. The fed-batch fermentation was carried out by adding 300 mL of CHMSRs into 1.0 L of batch fermentation broth. All fermentations were triplicated and performed at 33 °C and 180 rpm.



2.7 RT-qPCR

The fresh cell of *B. subtilis* NS-174 was cultured in 20 mL of BEM medium at 37 °C and 200 rpm for 36 h. The total RNA was isolated by the method described as the manufacturer's protocol of Trizol Reagent (Sangon, Shanghai, China). Then, the RNA sample was collected and detected by NanoDrop2000 (Thermo Scientific, USA). The cDNA synthesis was performed according to the procedure of HiScript™ 1 st Strand cDNA Synthesis Kit (Vazyme, USA). RT-qPCR was performed on a StepOnePlus™ Real-Time PCR System (Applied Biosystems, USA) using SYBR Premix ExTaq™ (TaKaRa, Dalian, China). The primers used for amplification of relative bacillomycin D synthesis genes (*bmy A*, *bmy B*, *bmy C*, *bmy D*, *TE*, *comA*, *sigma H* and *spo0 A*) and the PCR program were performed as described in the previous works.^{26,27}

2.8 Analytical methods

10 mL of fermentation cultures was centrifuged at 8000g for 10 min to obtain wet cells. The wet cells were dried at 80 °C for 6 h and the biomass concentration was defined as the dry cell weight. The concentration of C₁₄₋₁₅BDs was determined by HPLC according to Qian *et al.* (2015).²⁶ The ratio of C₁₄₋₁₅BDs/biomass (mg g⁻¹) was defined as the ratio of the concentration of C₁₄₋₁₅BDs (mg L⁻¹) to the biomass concentration (g L⁻¹). The output of C₁₄₋₁₅BDs (OC₁₄₋₁₅BDs) (mg g⁻¹) was defined as the ratio of the amount of C₁₄₋₁₅BDs (mg) to CMSs (g).

3. Results and discussion

3.1 Identification of the antifungal compounds producing strain

A total of 758 single colonies isolated from wetland were cultured in BEM medium and fermented in Landy medium. The cell-free supernatants (CFSs) of 4 strains exhibited strong antifungal activity against *Aspergillus flavus* (data not shown) and the strain NS-174 had the highest antifungal activity. Therefore, the strain NS-174 was selected to prepare for the following studies. A 1452 bp 16S rRNA sequence was amplified from the strain NS-174 genomic DNA. The results of sequence alignment and a neighbor-joining phylogenetic tree revealed that the strain NS-174 (accession number MN955309) was 99.72% similar to *Bacillus subtilis* WX1 (accession number KF624694.1) (Fig. 1).

B. subtilis species are considered to be well known classes for producing antifungal compounds. Many antifungal compounds, such as fengycin, surfactin and iturin, have been gradually found in *B. subtilis*^{28,29}. In the present study, the antifungal compounds in CFSs of the strain *B. subtilis* NS-174 exhibited significant inhibition effects against *A. flavus*, however, the structure of the antifungal compounds should be further investigated.

3.2 HPLC-MS/MS analysis of the antifungal compounds 1 and 2

The antifungal compounds from CFSs were further purified by Sephadex LH-20 chromatography and RP-HPLC. The results

obtained from HPLC profile (Fig. 2a) showed that the antifungal compounds had two active peaks (peaks 1 and 2) with the retention time at 18.34 and 20.93 min, respectively. The two active peaks were further analyzed by MS/MS. The results (Fig. 2b) showed that the isolated peaks 1 and 2 displayed their [M + H]⁺ ion peaks at *m/z* 1031.4 and *m/z* 1045.43. From the results of MS/MS analysis, it was important to note that the isolated compounds individually had the fatty acid chains of C₁₄ and C₁₅ with both contained seven peptide structures (-Asn-Tyr-Asn-Pro-Glu-Ser-Thr-). The similar evidences were found in previous reports.^{27,30} It was concluded that the antifungal compounds belonged to C₁₄ and C₁₅ of bacillomycin D homologues (C₁₄₋₁₅BDs).

3.3 Effects of cellulase hydrolysis of maize straws on production of C₁₄₋₁₅BDs

The effects of cellulase amount, substrate loading, and enzymolysis time on production of reducing sugar and C₁₄₋₁₅BDs were investigated using flask fermentations. The results were shown in Fig. 3. Fig. 3a showed that the yield of reducing sugar significantly enhanced along with the consumption of maize straws at the beginning. YRS-CHMRSs was up to 0.65 g g⁻¹ when the cellulase amount was at 80.0 mg, which indicated that cellulase could effectively convert maize straws to reducing sugar within an appropriate range. However, when the cellulase amount continued to mount up, YRS-CHMRSs had no significant increase, demonstrating that an overdose of cellulase was disadvantage to the production of reducing sugar from maize straws. Meanwhile, when the cellulase amount ranged from 20 to 80 mg, the biomass concentration and OC₁₄₋₁₅BDs increased from 1.14 to 2.05 g L⁻¹ and 1.37 to 4.05 mg g⁻¹, respectively, which indicated that there was a positive relation between reducing sugar and biomass. The reducing sugar could efficiently help to accumulate more cell growth for C₁₄₋₁₅BDs production in the strain *B. subtilis* NS-174.

Fig. 3b profiled the effect of substrate loading on production of reducing sugar and C₁₄₋₁₅BDs. It was found that 3.0% of substrate loading was suitable for producing more reducing sugar and YRS-CHMRSs achieved to be 0.68 g g⁻¹. A higher level of substrate loading (over 3.0%) was against the improvement of release of more reducing sugar. An excessive dose of substrate increased the viscosity of the reaction system, which hindered the effective combination of substrate and enzyme and therefore caused an inefficient enzymatic hydrolysis. Furthermore, when the substrate loading ranged from 1% to 3%, the biomass concentration and OC₁₄₋₁₅BDs were increased. The biomass concentration and OC₁₄₋₁₅BDs were respectively up to 1.98 g L⁻¹ and 4.03 mg g⁻¹ at substrate loading of 3%, which evidenced that OC₁₄₋₁₅BDs showed a dose-dependent manner within an appropriate range of substrate loading.

Fig. 3c showed that the release of reducing sugar had an obvious increase when the enzymolysis time was from 36 to 72 h, correlating with the increase of the consumption of maize straws. YRS-CHMRSs was observed to be a maximum value at 72 h. As the enzymolysis time was further extended, YRS-CHMRSs no longer elevated, indicating that an excessive



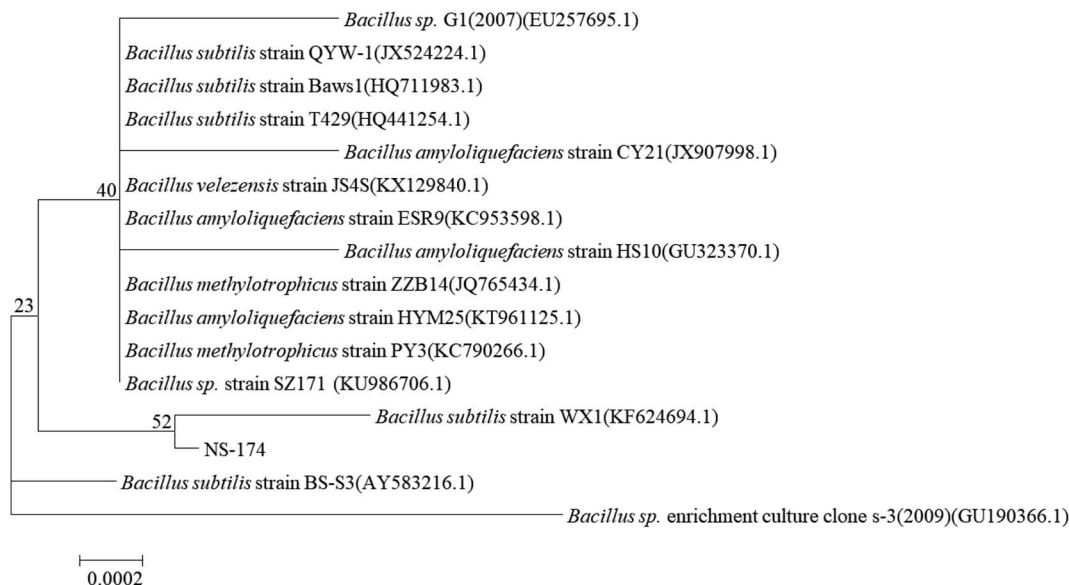


Fig. 1 The phylogenetic tree of the strain NS-174. The tree was constructed by the neighbor-joining method using the software MEGA5.0. Bar: sequence divergence of 0.0002.

enzymolysis time made little sense of the release of reducing sugar. Therefore, the enzymolysis time was reasonably obtained to be 72 h. At the same time, when the enzymolysis time varied from 36 to 72 h, it was observed that the biomass concentration and C_{14-15} BDS production synchronously increased and their optimal values were achieved at 72 h, which evidenced that the production of C_{14-15} BDS was closely related to the reducing sugar.

The enzymatic hydrolysis was extensively used to produce target active compounds in microorganisms and the previous reports proved that enzymatic hydrolysis was an important tool in bioconversion.^{31,32} Yu *et al.* (2017) efficiently used hemicellulose and cellulose from corncob to produce bioethanol by *Spathospora passalidarum* U1-58 using the hydrolysis method of cellulase and xylanase.³³ Zhao *et al.* (2019) available degraded sodium hydroxide pretreated rice straw by three-stage enzymatic hydrolysis to accumulate microbial oil by *Mortierella isabellina*.¹⁴ Maize straws consisted of large molecular carbohydrates including cellulose, hemicellulose and lignin. Enzymatic hydrolysis was beneficial to change these carbohydrates to small reducing sugars,¹⁰ which was helpful for bioconversion. Enzyme, substrate and reaction time were considered to be the key factors that were closely relative to digestion efficiency in the process of enzymatic hydrolysis. An appropriate amount of enzymes, substrates and reaction time could promote the combination of enzymes and substrates, thereby improving the efficiency of reducing sugar release and bioconversion of target products.^{12,34} In the present study, a right dose of cellulase and substrate, and an appropriate enzymolysis time could significantly increase the production of reducing sugar, thus accelerated biomass accumulation and C_{14-15} BDS formation. In general, given the efficiency of cellulase hydrolysis and the production capacity of C_{14-15} BDS, an available cellulase hydrolysis condition was reasonably determined to be the cellulase

amount of 80 mg, the substrate loading of 3% and the enzymolysis time of 72 h.

3.4 Evaluation of fermentation strategies for C_{14-15} BDS production

The fermentation characteristics of flask fermentations, batch fermentations and fed-batch fermentations for C_{14-15} BDS production by *B. subtilis* NS-174 were investigated using hydrolyzates of maize straws as fermentation substrates. The time courses of fermentation curves were illustrated in Fig. 4. The results of flask fermentations in Fig. 4a showed that the biomass concentration apparently increased and remained at a high level when at the fermentation time of 48 h. However, the biomass concentration decreased gradually after 48 h. OC_{14-15} BDS had no significant increase from 0 to 36 h and the strain *B. subtilis* NS-174 started to produce C_{14-15} BDS after 48 h. The highest OC_{14-15} BDS reached 4.06 mg g^{-1} at 96 h (Fig. 4a and Table 1). The effects of batch fermentation on C_{14-15} BDS production were shown in Fig. 4b. It was found that the biomass and C_{14-15} BDS production showed the same trend for the flask fermentation and the batch fermentation. The biomass concentration at 48 h and OC_{14-15} BDS at 96 h were 4.03 g L^{-1} and 8.87 mg g^{-1} , respectively (Fig. 4b and Table 1). While after 48 h, the biomass concentration continued to decrease, due to the lack of carbon sources. *B. subtilis* NS-174 required ample fermentation substrates to maintain a high level of cell growth for C_{14-15} BDS production. Consequently, the fed-batch fermentation was further performed and the results were shown in Fig. 4c and d. The results demonstrated that fed-batch fermentation effectively improved cell growth and C_{14-15} BDS production. When fed 300 mL of CHMSRs into 1.0 L of batch fermentation broth at 60 h, the maximum biomass concentration, ratio of C_{14-15} BDS/biomass, OC_{14-15} BDS were respectively obtained to be 8.63 g L^{-1} , 70.41 mg g^{-1} and 44.84 mg g^{-1} .



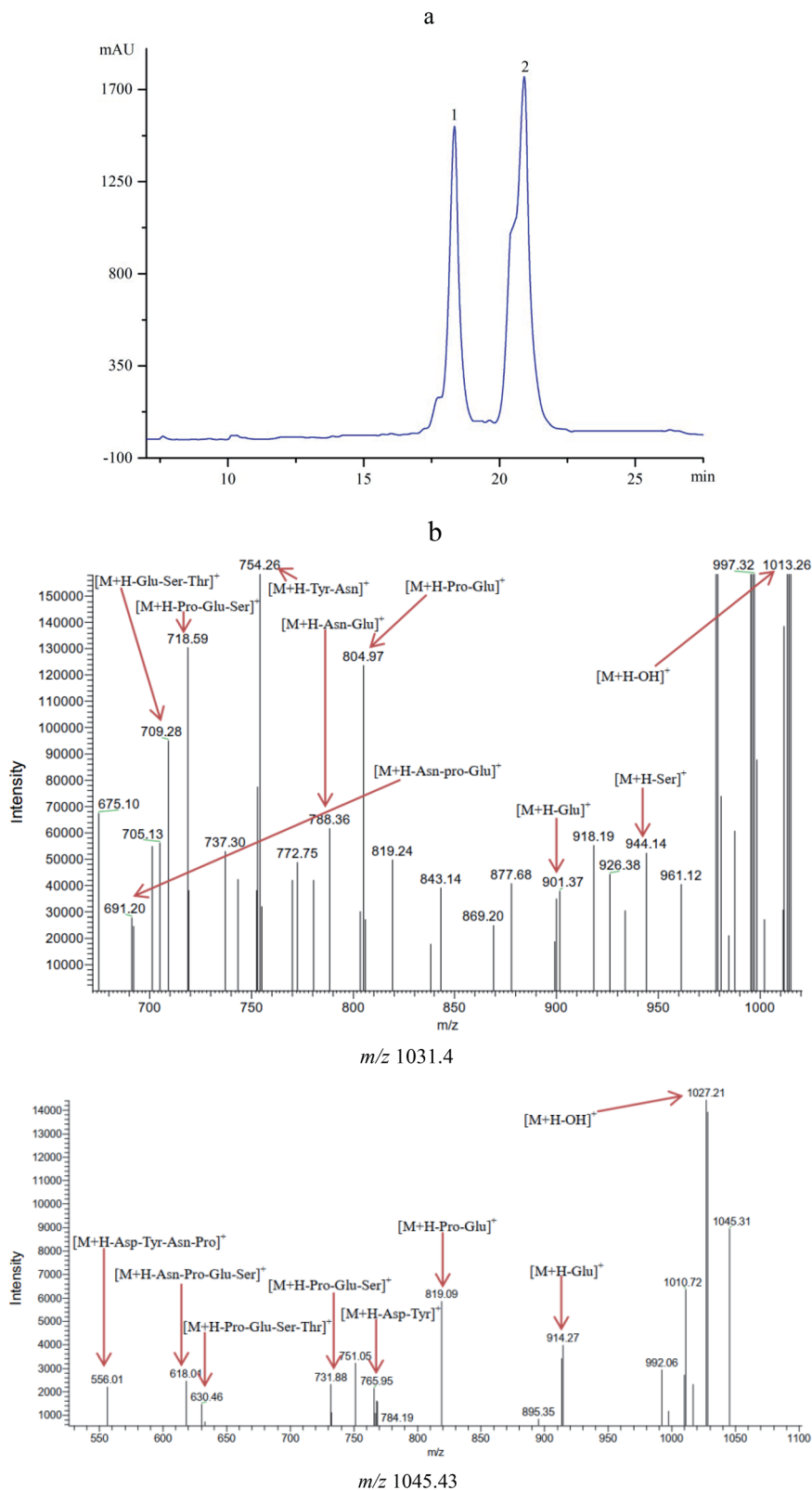


Fig. 2 (a) HPLC profile of the antifungal compounds (peaks 1 and 2) with retention time of 18.34 and 20.93 min. (b) MS/MS analysis of the antifungal compounds with m/z 1031.40 and m/z 1045.43.

Compared with that of batch fermentation, the biomass concentration, the ratio of C_{14-15} BDS/biomass and OC_{14-15} BDS were individually increased by 114.14%, 430.59% and 405.52%,

indicating that the fed-batch fermentation could efficiently promote cell growth and C_{14-15} BDS production of *B. subtilis* NS-174.



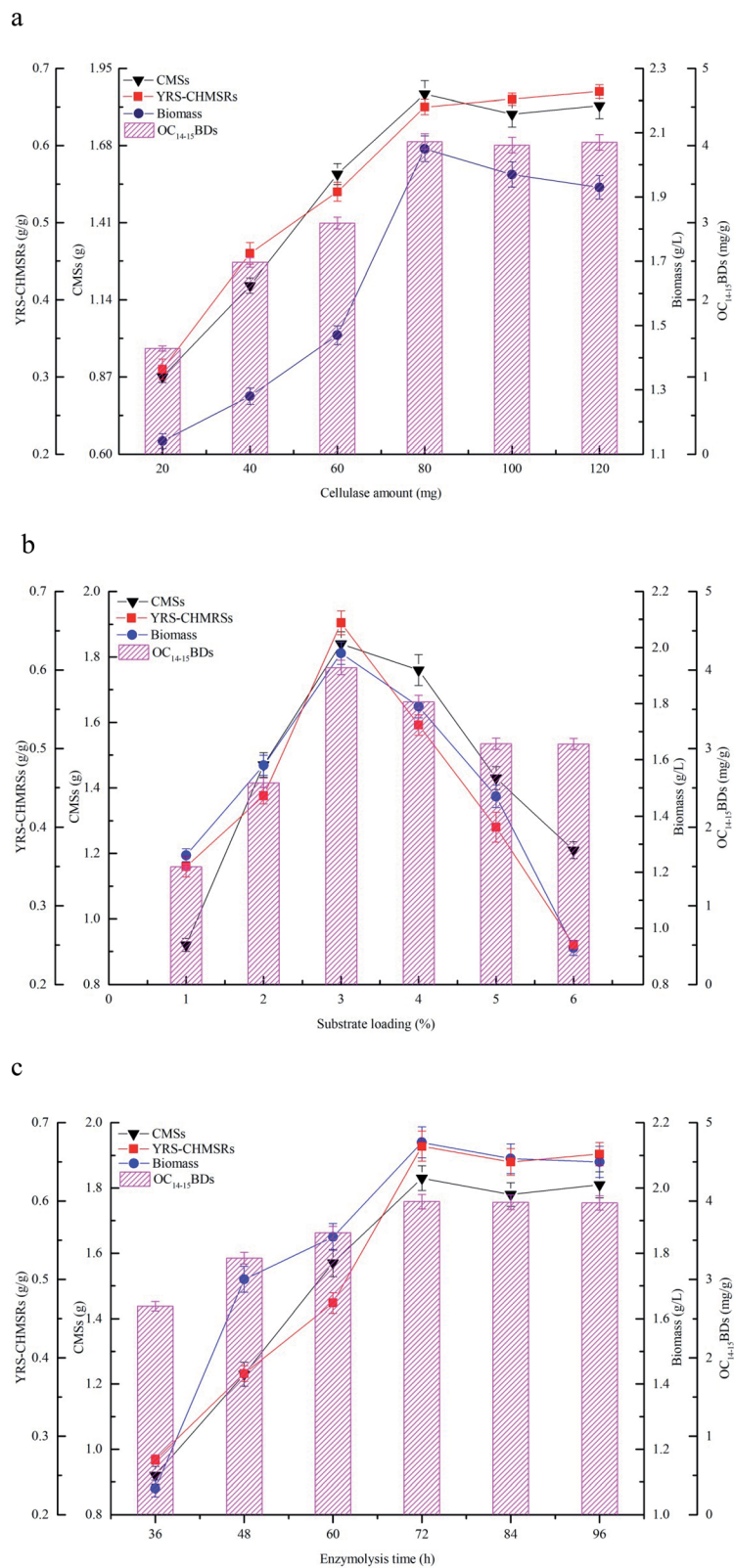


Fig. 3 The effects of the cellulase enzymatic hydrolysis on production of C₁₄₋₁₅BDs, (a) cellulase amount, (b) substrate loading and (c) enzymolysis time. All experiments were triplicated and the error bars were shown as standard deviations.



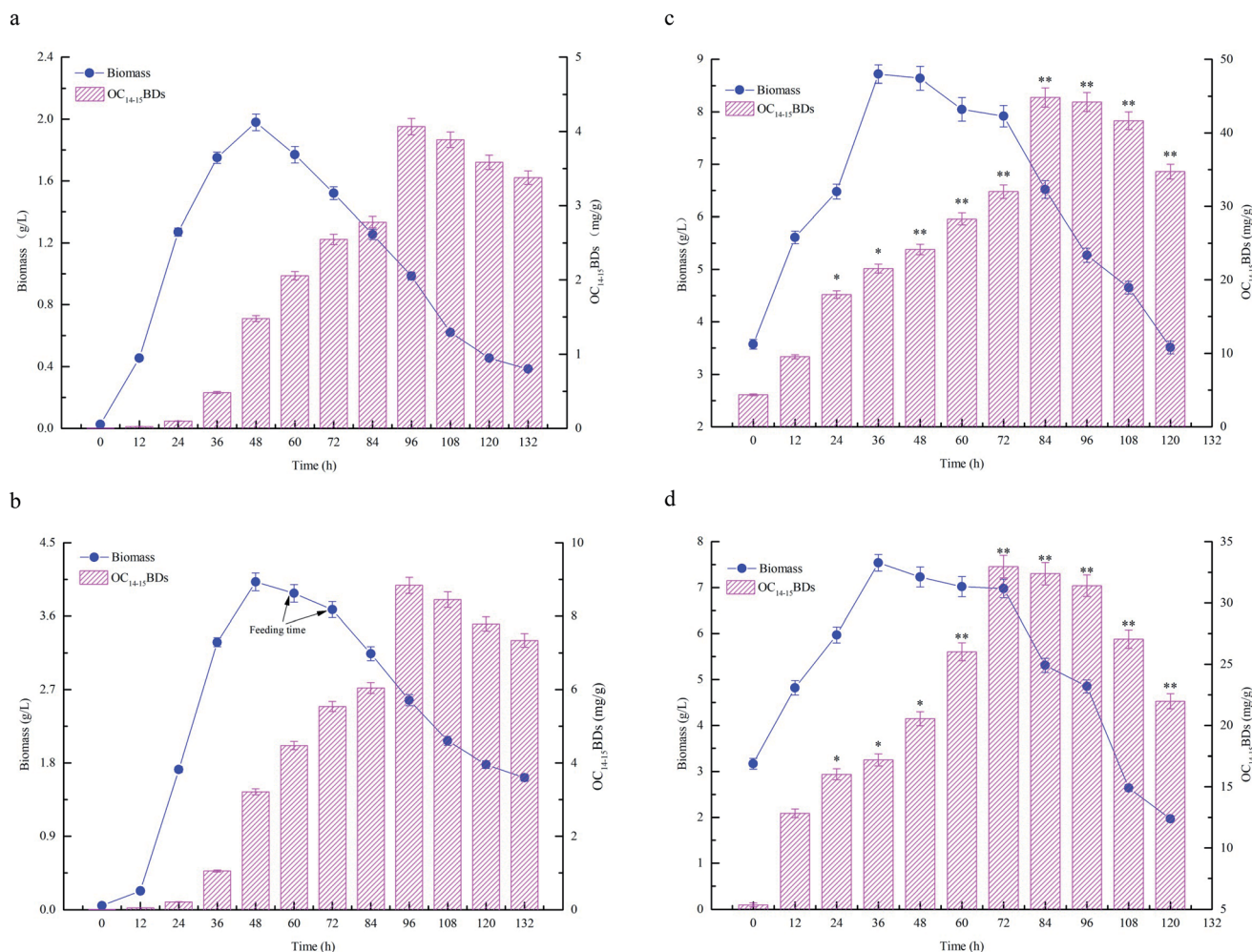


Fig. 4 Time courses of C_{14-15} BDs production by different fermentations. All fermentations were performed at 33 °C and 180 rpm. (a) Flask fermentation, the flask experiment was carried out in a working volume of 100 mL. (b) Batch fermentation, the batch experiment was carried out in a working volume of 1.0 L; (c) fed-batch fermentation, 400 mL of CHMSRs was added into 1.0 L of batch fermentation broth at 60 h; (d) fed-batch fermentation, 400 mL of CHMSRs was added into 1.0 L of batch fermentation broth at 72 h. All experiments were triplicated and the error bars were shown as standard deviations. * and ** denoted the significances from controls at 0.05 and 0.01 levels.

The previous studies confirmed that the reducing sugar formed by enzymatic hydrolysis of maize straws could significantly increase the biomass concentration of microorganisms, thereby improve the yield of target substances.^{13,14} Bacillomycin D was a cyclic lipopeptide that produced as secondary

metabolites by *Bacillus* spp. The synthesis of cyclic lipopeptides was closely relevant to cell growth of target bacteria and the increase of biomass concentration was advantageous to generate more bacillomycin D.²⁶ From the results of Fig. 4, it was also observed that high level of reducing sugar was

Table 1 Comparison of C_{14-15} BDs production by different fermentations. All experiments were triplicated and the average values were shown as standard deviations

Fermentation process	Maximum biomass (g L ⁻¹)	Maximum ratio of C_{14-15} BDs/biomass (mg g ⁻¹)	Maximum OC_{14-15} BDs (mg g ⁻¹)
Flask fermentation	2.05 ± 0.05 ^a	5.90 ± 0.15 ^b	4.06 ± 0.11 ^b
Batch fermentation	4.03 ± 0.11 ^c	13.27 ± 0.37 ^d	8.87 ± 0.23 ^d
Fed-batch fermentation	8.63 ± 0.25 ^e	70.41 ± 1.52 ^f	44.84 ± 1.31 ^f

^a The flask experiment was carried out in a working volume of 100 mL and fermented at 48 h. ^b The flask experiment was carried out in a working volume of 100 mL and fermented at 96 h. ^c The batch experiment was carried out in a working volume of 1.0 L and fermented at 48 h. ^d The batch experiment was carried out in a working volume of 1.0 L and fermented at 84 h. ^e Feeding 300 mL CHMSRs into 1.0 L batch fermentation broth at 60 h and fermented at 36 h. ^f Feeding 300 mL CHMSRs into 1.0 L batch fermentation broth at 60 h and fermented at 84 h.



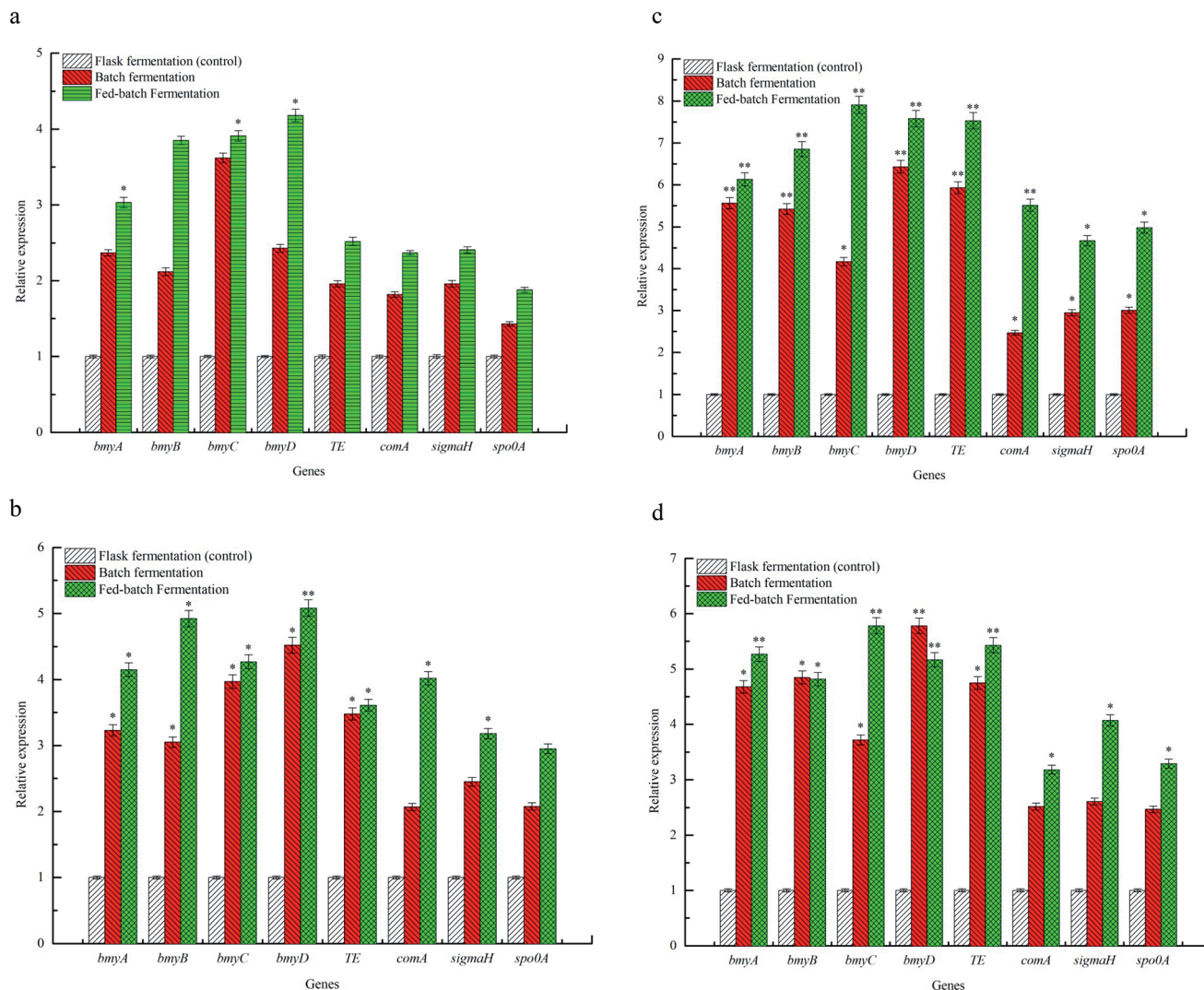


Fig. 5 Profiles of genes expression for C_{14-15} BDs biosynthesis by different fermentations. All fermentations were performed at 12 h (a), 24 h (b), 36 h (c) and 48 h (d). The flask experiments were carried out in a working volume of 100 mL. The batch fermentations were experimentalized with a working volume of 1.0 L. The fed-batch experiment was performed in a working volume of 1.0 L, with 400 mL of CHMSRs added into 1.0 L of batch fermentation broth at 60 h. All experiments were triplicated and error bars were shown as standard deviations. * and ** denoted the significances from controls at 0.05 and 0.01 levels.

beneficial for enhancing the biomass concentration and thus producing more C_{14-15} BDs in *B. subtilis* NS-174. However, the lack of the reducing sugar supplied in the medium limited cell growth of *B. subtilis* NS-174, and caused a low yield of C_{14-15} BDs. Therefore, further improvement of fermentation strategy was necessary for the production of C_{14-15} BDs. It was well known that the fed-batch fermentation could significantly improve the biomass concentration of microorganisms and the synthetic ability of target substances.^{16,35} The similar evidence was also found by Zhong *et al.* (2014), which significantly increased the production of an antifungal cyclic lipopeptide (jean-peptide) by *Bacillus subtilis* using fed-batch fermentation.³⁶ In the present study, according to the evidences of Fig. 4 and Table 1, the production C_{14-15} BDs of fed-batch fermentation significantly enhanced as compared to the production of batch fermentation and flask fermentation.

3.5 Genes expression of C_{14-15} BDs biosynthesis by different fermentation strategies

The effects of flask fermentation, batch fermentation and fed-batch fermentation on expression of *bmy A*, *bmy B*, *bmy C*, *bmy D*, *TE*, *com A*, *sigma H* and *spo0 A* were presented in Fig. 5. The results showed that expression of *bmy A*, *bmy B*, *bmy C*, *bmy D*, *TE*, *com A*, *sigma H* and *spo0 A* was increased when the fermentation time ranged from 12 to 36 h. After 36 h, expression of these eight genes decreased. The expression of *bmy A*, *bmy B*, *bmy C*, *bmy D*, *TE*, *com A*, *sigma H* and *spo0 A* by fed-batch fermentation was found to be 6.13 times at 36 h ($P < 0.01$), 6.85 times at 36 h ($P < 0.01$), 7.91 times at 36 h ($P < 0.01$), 7.58 times at 36 h ($P < 0.01$), 7.53 times at 36 h ($P < 0.01$), 5.51 times at 36 h ($P < 0.01$), 4.67 times at 36 h ($P < 0.05$), 4.98 times at 36 h ($P < 0.05$) higher than that of batch fermentation. Our evidences showed that the fed-batch fermentation could significantly up-



regulate the expression of *bmy A*, *bmy B*, *bmy C*, *bmy D*, *TE*, *com A*, *sigma H* and *spo0 A*. The synthesis of a cyclic lipopeptide followed a non-ribosomal enzyme catalysis pattern and was closely correlated to the expression of its synthase.^{4,37} The biosynthesis of bacillomycin D was regulated by *bmyA*, *bmyB*, *bmyC*, *bmyD* and *TE*,⁵ which catalyzed the formation of cyclic heptapeptides by adenylation, thiolation and concentration of amino acids, the synthesis of fatty acid chains and the cyclization of amino acids. As can be seen from Fig. 5, the fed-batch fermentation significantly promoted expression of *bmyA*, *bmyB*, *bmyC*, *bmyD* and *TE*, which contributed to improving the transcriptional activities of synthetase genes of C_{14–15}BDs and caused elevation of C_{14–15}BDs production. In addition, the biosynthesis of cyclic lipopeptides was also associated with signal genes in *Bacillus subtilis*, such as *Com A*, *Sigma H* and *Spo0 A*.^{4,5} Expression of *ComA*, functioned as a transcriptional regulator, was helpful for the formation of spores and the synthesis of cyclic lipopeptide in *B. subtilis*.³⁸ *SigmaH* contributed to sporulation and synthetase transcription of cyclic lipopeptides. *Spo0A* regulated the formation of spores in *B. subtilis*.³⁹ It was previously evidenced that the increase of expression of *Spo0A* and number of spores could promote the synthesis of iturin A and bacillomycin D.^{26,40} From the evidences in Fig. 5, compared with the batch fermentation and the flask fermentation, the fed-batch fermentation significantly increased expression of *Com A*, *Sigma H* and *Spo0 A*, and elevated the transcriptional activity of C_{14–15}BDs synthase genes, thus improved the production of C_{14–15}BDs.

4. Conclusions

The antifungal compounds isolated from *Bacillus subtilis* NS-174 were characterized to be C₁₄ and C₁₅ bacillomycin D homologues (C_{14–15}BDs). The enzymatic hydrolysis of maize straws could be good for noticeably increasing production of C_{14–15}BDs. The fermentation strategies on the production of C_{14–15}BDs were evaluated and the fed-batch process significantly improved the production of C_{14–15}BDs. Feeding CHMSRs could significantly improve transcriptional activities of C_{14–15}BDs synthetase genes through up-regulation expression of *comA*, *sigmaH* and *spo0A*, which contributed to elevating the production of C_{14–15}BDs.

Conflicts of interest

There are no conflicts of interest to declare.

Acknowledgements

This work was financially supported by the National Natural Science Foundation of China (No. 31571887), Young Talents Project for Jiangsu Collaborative Innovation Center of Regional Modern Agriculture and Environmental Protection (HSXT2-312) and Xiangyu Talents Project for Huaiyin Normal University (31QSQ00).

References

- Q. Gong, C. Zhang, F. Lu, H. Zhao, X. Bie and Z. Lu, *Food Control*, 2014, **36**, 8–14.
- J. Yuan, B. Li, N. Zhang, R. Waseem, Q. Shen and Q. Huang, *J. Agric. Food Chem.*, 2012, **60**, 2976–2981.
- S. Qian, H. Lu, J. Sun, C. Zhang, H. Zhao, F. Lu, X. Bie and Z. Lu, *Food Control*, 2016, **60**, 281–288.
- A. L. Moyne, T. E. Cleveland and S. Tuzun, *FEMS Microbiol. Lett.*, 2004, **234**, 43–49.
- X. H. Chen, A. Koumoutsis, R. Scholz, K. Schneider, J. Vater, R. Süssmuth, J. Piel and R. Borriss, *J. Biotechnol.*, 2009, **140**, 27–37.
- H. Liu, X. Ou, J. Yuan and X. Yan, *Resour., Conserv. Recycl.*, 2018, **135**, 216–224.
- Q. Yu, R. Liu, K. Li and R. Ma, *Resour., Conserv. Recycl.*, 2019, **107**, 51–58.
- S. H. Ghaffar, M. Fan and B. McVicar, *Ind. Crops Prod.*, 2015, **77**, 262–274.
- P. Moniz, H. Pereira, T. Quilhó and F. Carvalheiro, *Ind. Crops Prod.*, 2013, **50**, 145–153.
- M. Chen, J. Zhao and L. Xia, *Carbohydr. Polym.*, 2008, **71**, 411–415.
- P. Wang, J. Chang, Q. Yin, E. Wang, Q. Zhu, A. Song and F. Lu, *Bioresour. Technol.*, 2015, **194**, 165–171.
- H. Patel, D. Chapla and A. Shah, *Renewable Energy*, 2017, **109**, 323–331.
- X. Xu, P. Wu, T. Wang, L. Yan, M. Lin and C. Chen, *Bioresour. Technol.*, 2019, **278**, 43–50.
- C. Zhao, B. Xie, R. Zhao and H. Fang, *Renewable Energy*, 2019, **130**, 281–289.
- J. Chen, X. Zhang, S. Yan, R. D. Tyagi and P. Drogui, *Fuel*, 2017, **209**, 1–9.
- N. Kumar, S. K. Sudan, R. Garg and G. Sahni, *Process Biochem.*, 2019, **78**, 1–7.
- D. Cai, C. Chen, C. Zhang, Y. Wang, H. Wen and P. Qin, *Biochem. Eng. J.*, 2017, **125**, 18–22.
- L. Paulová, P. Patáková, M. Rychtera and K. Melzoch, *Fuel*, 2014, **122**, 294–300.
- A. Sawisit, S. Jampatesh, S. S. Jantama and K. Jantama, *Bioresour. Technol.*, 2018, **260**, 348–356.
- J. Soares, M. M. Demeke, M. Van de Velde, M. R. Foulquié-Moreno, D. Kerstens, B. F. Sels, A. Verplaetse, A. A. R. Fernandes, J. M. Thevelein and P. M. B. Fernandes, *Bioresour. Technol.*, 2017, **244**, 234–242.
- M. Landy, G. H. Warren, S. B. Rosenmanm and L. G. Colio, *J. Bacteriol.*, 1947, **54**, 24.
- S. Zhao, J. Han, X. Bie, Z. Lu, C. Zhang and F. Lv, *J. Agric. Food Chem.*, 2016, **64**, 2754–2764.
- S. F. Altschul, *J. Mol. Biol.*, 1990, **215**, 403–410.
- K. Tamura, D. Peterson, N. Peterson, G. Stecher, M. Nei and S. Kumar, *Mol. Biol. Evol.*, 2011, **28**, 2731–2739.
- G. L. Miller, *Anal. Biochem.*, 1959, **31**, 426–428.
- S. Qian, H. Lu, P. Meng, C. Zhang, F. Lv, X. Bie and Z. Lu, *Bioresour. Technol.*, 2015, **179**, 260–267.



- 27 J. Sun, S. Qian, J. Lu, Y. Liu, F. Lu, X. Bie and Z. Lu, *J. Agric. Food Chem.*, 2018, **66**, 4422–4430.
- 28 S. Guo, J. W. Zhang, L. H. Dong, X. Li, M. Asif, Q. G. Guo, W. J. Jiang, P. Ma and L. Q. Zhang, *Biol. Control*, 2019, **136**, 104001.
- 29 F. Siahmoshteh, Z. Hamidi-Esfahani, D. Spadaro, M. Shams-Ghahfarokhi and M. Razzaghi-Abyaneh, *Food Control*, 2018, **89**, 300–307.
- 30 R. Ramachandran, M. Shrivastava, N. N. Narayanan, R. L. Thakur, A. Chakrabarti and U. Roy, *Antimicrob. Agents Chemother.*, 2018, **62**, e01457-17.
- 31 Q. Bei, G. Chen, Y. Liu, Y. Zhang and Z. Wu, *J. Funct. Foods*, 2018, **47**, 512–520.
- 32 Y. Nan, M. Yang, D. Xin, K. Li, S. Kuittinen, A. Pappinen and J. Zhang, *Fuel*, 2019, **245**, 406–412.
- 33 H. Yu, J. Guo, Y. Chen, G. Fu, B. Li, X. Guo and D. Xiao, *Bioresour. Technol.*, 2017, **232**, 168–175.
- 34 L. A. R. Batalha, Q. Han, H. Jameel, H.-m. Chang, J. L. Colodette and F. J. Borges Gomes, *Bioresour. Technol.*, 2015, **180**, 97–105.
- 35 X. Yang, H. S. Choi, J. H. Lee, S. K. Lee, S. O. Han, C. Park and S. W. Kim, *Chem. Eng. J.*, 2018, **349**, 25–36.
- 36 J. Zhong, X. Zhang, Y. Ren, J. Yang, H. Tan and J. Zhou, *Electron. J. Biotechnol.*, 2014, **17**, 132–136.
- 37 J. S. Lott and T. V. Lee, *Structure*, 2017, **25**, 693–695.
- 38 L. W. Hamoen, *Microbiology*, 2003, **149**, 9–17.
- 39 S. D. Seredick and G. B. Spiegelman, *J. Mol. Biol.*, 2007, **366**, 19–35.
- 40 M. S. Rahman, T. Ano and M. Shoda, *J. Biotechnol.*, 2006, **125**, 513–515.

