



Cite this: *RSC Adv.*, 2017, 7, 36670

Received 28th February 2017

Accepted 22nd June 2017

DOI: 10.1039/c7ra02497e

rsc.li/rsc-advances

Biofilm formation and control strategies of foodborne pathogens: food safety perspectives

Xihong Zhao,^{ID}*^a Fenghuan Zhao,^a Jun Wang^b and Nanjing Zhong^c

Foodborne pathogens are the main factors behind foodborne diseases and food poisoning and thus pose a great threat to food safety. Many outbreaks have been found to be associated with biofilms. It is well documented that biofilms have become an urgent problem in the current food industry as biofilms can render inhabitants on such films resistant to antimicrobial agents and cleaning. In this paper, recent literature related to the biofilm formation and on the factors that influence foodborne pathogens are reviewed. In addition, the control and removal strategies of foodborne pathogens used to efficiently maintain food safety in the food industry are also discussed.

1. Introduction

Foodborne pathogens are a major cause of foodborne diseases and food poisoning and thus pose a serious threat to food safety.¹ There are many kinds of foodborne pathogens, which commonly contaminate fruits, vegetables, meat, and seafood, such as *Escherichia coli* O157:H7, *Salmonella*, *Vibrio parahaemolyticus*, *Staphylococcus aureus*, *Clostridium perfringens*, and *Listeria monocytogenes*.² In recent years, diseases caused by foodborne pathogens have become an important public health problem in many parts of the world, producing a significant rate of morbidity and mortality.^{3,4} According to a World Health Organization (WHO) report, foodborne diseases are considered as an emergent public health problem in both developed and developing countries.⁵ In addition, many other outbreaks of pathogens have been found to be associated with biofilms.⁶

Food is rich in nutrients and suitable for the growth and reproduction of pathogens. Bacteria exist in food in two ways: bacteria can be suspended in liquid food, usually living planktonically; in solid or viscous food, bacteria can easily adhere to the surface of food materials, food processing equipment, and the surface of pipelines and can eventually form a bacterial biofilm.⁷ The theory of biofilms was developed from the study of bacterial plaque, which was first discovered and reported by Costerton in 1978, who subsequently found that there was a relationship between biofilms and pathogenicity,⁸ while later

knowledge on the formation and influence of biofilm was greatly advanced. In the natural environment, a small part of the bacteria exists in a floating way, while most of the bacteria live by the way of a biofilm in order to adapt to the adverse environment. Once a biofilm is formed, its susceptibility to various chemical fungicides and environmental changes is greatly reduced, and thus it is difficult to be removed completely. Thus, high dosages of antibiotics cannot remove infectious biofilms since bacteria are well protected by the biofilm matrix. Biofilms are more resistant to antimicrobials compared to planktonic cells, which make their elimination from food processing facilities a great challenge.⁹ Therefore, the emergence of bacteria resistant to conventional antimicrobials clearly shows that new biofilm control strategies are required. The present review summarizes the mechanisms involved in biofilm formation and the factors influencing such a formation as well as the current and emergent control strategies, providing new insights for developing biofilm-free food processing systems.

2. Biofilm formation

Bacterial biofilms are associated with a self-produced hydrated matrix of extracellular polymeric substances (EPSs) and are comprised of polysaccharides, proteins, lipids, and extracellular DNA (eDNA), which adhere to each other and adhere to the surface of an object. There are some features of biofilms different from planktonic bacteria: (i) the intercellular signaling system,¹⁰ such as quorum sensing (produces signaling molecules and regulates the development of biofilm), (ii) cyclic nucleotide second messengers,¹¹ such as: cyclic-diguanosine-GMP (regulates biofilm formation and dispersal by influencing flagellar motility, and the attachment and production of extracellular polysaccharides), (iii) bap protein¹² (assembles matrix scaffold proteins and builds the biofilm matrix). Most of the bacteria live in a biofilm to adapt to special environments.

^aResearch Center for Environmental Ecology and Engineering, Key Laboratory for Green Chemical Process of Ministry of Education, Key Laboratory for Hubei Novel Reactor & Green Chemical Technology, School of Chemical Engineering and Pharmacy, Wuhan Institute of Technology, Wuhan 430073, P. R. China. E-mail: xhzhao2006@gmail.com; Fax: +86-27-89474980; Tel: +86-27-89474980

^bCollege of Food Science and Engineering, Qingdao Agricultural University, Qingdao, Shandong, 266109, P. R. China

^cSchool of Food Science, Guangdong Pharmaceutical University, Zhongshan 528458, P. R. China



Biofilms are found extensively on moist surfaces, such as food, food processing equipment, water pipelines, industrial piping, ventilation, medical devices, pathological human tissues and organs and so on. A biofilm is a growth mode involving adhesion to a surface, and is usually made up of many a variety of bacteria.¹³ Biofilm formation is also influenced by environmental factors, such as temperature and pH, since these factors may facilitate bacterial adhesion. The biofilm formation mainly includes four stages: bacterial attachment, microcolony formation, bacterial biofilm maturation, and dispersion. Initial attachment may occur to moist food and pipeline surfaces, such as the surfaces of fruit products and food processing utensils. The initial step of biofilm formation depends on the interaction between the environmental changes and bacteria signals regulation. The attachment is influenced mostly by the surface's properties, such as roughness and hydrophobic interactions. The process of biofilm maturation and the architecture of the biofilm formation are mainly regulated by signals communicated by different bacteria. Additionally, a biofilm will be more stable with certain adhesive factors, including accumulation-associated protein (Aap), eDNA, polysaccharide intercellular adhesion. Otherwise, biofilm may tend to disperse with the addition of disruptive factors, such as proteases and nucleases. The last step of detachment is driven commonly by external environmental changes, such as various enzymes that can react with the EPSs (Fig. 1).

2.1 Initial attachment

Bacteria's initial attachment consists of reversible attachment and irreversible attachment. In the case of reversible

attachment, bacteria casually stick to the carrier surface by some extracellular organelles, such as flagellum, pili, and a small amount of EPSs.¹⁴ Since the attachments are not yet committed to the differentiation series of morphological changes, this stage of attachment is easy to return to the original planktonic lifestyle. The main components of the EPSs include PIA, eDNA, protein, lipids, and so on. When these environmental factors change, it promotes the attachment to the surface, driving attachment toward irreversible attachment (Fig. 1).¹⁵ In the stage of reversible attachment, the level of EPSs secreted by bacteria reaches a certain degree, which generates a strong interaction between the bacteria and the surface, and then the biofilm enters the stage of irreversible attachment. From the stage of reversible attachment to the irreversible attachment, the time is as short as several minutes.¹⁶ EPSs secreted by cells in the stage of irreversible attachment enhance the cell-to-surface adhesion, which requires a strong shear or disinfectant to remove such a bacterial attachment.

2.2 Microcolony formation

After irreversible attachment, with the accumulation of a certain number of bacteria and their secretion of extracellular polymers, the binding between bacteria and the surface becomes close under appropriate growth conditions. In the meantime, the process of micro-colonies being formed increases significantly, and gradually small colonies are formed (Fig. 1). For *Staphylococcus epidermidis*, in the irreversible phase, the polysaccharide intercellular adhesin (PIA), encoded by the *icaADBC* locus, is the main component mediating intercellular

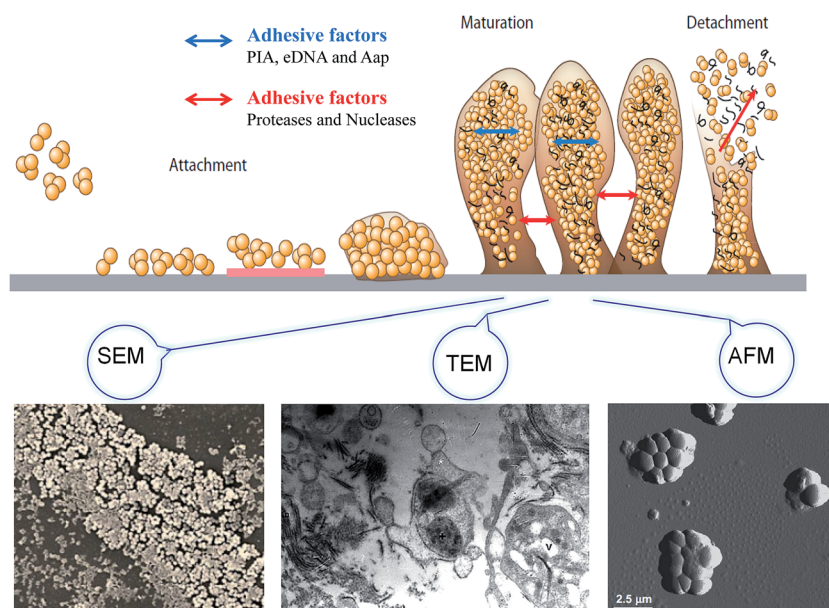


Fig. 1 Evolution model of biofilm over 48 h, with changes in microcolony formation, maturation, and dispersion. The bacterial cells attach to a surface (the cells are depicted as yellow circular types). After attachment on the red surface, the bacteria come together to form a microcolony. The extracellular polymeric matrix is depicted as the orange outline around the microcolony. Then, biofilms mature with 3D biofilm structures. Finally, the adhesive factors provide higher stability for the biofilms, while the biofilm is disrupted by proteases and other enzymes, changing into free cells. Planktonic cultures of *S. epidermidis* were grown for up to 48 h incubation at 37 °C, and biofilm growth was examined at various stages of development by scanning electron microscopy (SEM), transmission electron microscopy (TEM), and atomic force microscopy micrographs (AFM). The biofilm was shown to form within 6 h, and became established after 24–48 h.



adhesion.¹⁷ Among biofilm formation in *Pseudomonas aeruginosa*, for irreversible attachment, the SadB protein level appears to have a positive correlation, but RpoN and FleR appear to negatively affect the SadB levels.¹⁸ Research has found that *lap* mutants were unable to progress from the reversible attachment to the irreversible attachment stage of biofilm development, since the *lap* mutant strains are impaired in an early step in biofilm formation and are unable to develop the mature biofilm, so a *lapEBC*-encoded ABC transporter is required for biofilm formation by *Pseudomonas fluorescens* WCS365 in the irreversible attachment stage.¹⁹ Quorum sensing occurs mainly in the microcolony formation stage. Quorum sensing is a bacterial intercommunication system for when the population density of bacteria reach a certain level. The result of quorum sensing is the secretion of signal molecules regulating the expression of the corresponding gene, and secreting EPSs.²⁰

2.3 Biofilm maturation

The attachment of small colonies grows into the mature biofilm with the characteristic three-dimensional (3D) biofilm structure. The attachment between cells and carriers and cells-to-cells mainly relies on the EPSs so that the colony can withstand a certain degree of mechanical pressure to prevent shedding from the carrier surface. Cell lysis and released extracellular DNA are critical for the initial biofilm attachment, and released eDNA remains an important matrix component in biofilm maturation. The regulation of quorum sensing and surfactants has extensive importance for biofilm maturation processes. The appearance of a mature biofilm can be justified obviously by using a microscope, such as scanning electron microscopy (SEM), atomic force microscopy (AFM), and transmission electron microscopy (TEM) (Fig. 1). The mature biofilm is composed of three layers, where the inner layer is a regulating film, which forms a network structure instead of covering completely the surface of the living or non-living body; the middle layer is a compact microbial basement membrane; the outermost surface film is where the plankton lives. The mature biofilm, with pathogenicity, which increases resistance to antibacterial agents, is more difficult to contact and remove bacteria, and the detachment of the biofilm often leads to human infection because of *S. epidermidis* and other foodborne pathogens.²¹ However, biofilm maturation can be influenced with disruptive factors, since enzymes can react with the biofilm matrix and cause the biofilm to change into free bacteria finally.

2.4 Dispersion

The outermost film is inhabited by plankton, which are free to float to other areas and form a new biofilm in some special conditions. It has been shown that biofilm bacteria can be detached by disruptive factors, such as catabolite repression, nutrient limitation, and secretory proteins (Fig. 1). More biofilm formation can occur though, since the maturation biofilm will change into planktonic bacteria in an appropriate environment. The reasons for biofilm separation include external environmental effects, such as increased shear stress

and a lack of nutrient supply, and internal biochemical changes in bacteria, such as endogenous enzyme degradation, EPS or surface-binding protein releasing.²² *P. aeruginosa* biofilm was found to be regulated by the gene and signal molecules, and the biofilm dispersion locus *bdlA* gene is mutated under the management of biocide H₂O₂, suggesting that BdlA protein might be the signal molecules leading to biofilm dispersal.²³ Furthermore, *P. aeruginosa* is regulated by two quorum-sensing systems, LasI/LasR and RhII/RhIR, and quorum sensing promotes biofilm dispersion at least by reducing the synthesis of rhamnolipids.²⁴ The detachment from the biofilm is thought to be a key reason for the spread of pathogens, so it is important to study the mechanism of biofilm detachment and its inhibition for preventing food-borne pathogens infection.

3. Factors behind biofilm formation

3.1 Bacterial factors

The initial attachment of bacteria involves casually sticking to the carrier surface by flagellum, pili, and fimbriae. Flagella and type IV pili were found not to be necessary for *P. aeruginosa* initial attachment, as wild type, flagella, and type IV pili mutants formed biofilms with different structures, but they also contributed to the biofilm architecture and allowed for the formation of voluminous biofilms.²⁵ Bacteria fimbriae integrate with the surface of biological materials by non-specific electrical attraction or hydrophobic interaction, which is one of the important means of biofilm formation.²⁶ In the process of *Klebsiella pneumoniae* colonization, type 3 fimbriae promote the attachment of bacteria to non-biological surfaces and the formation of *K. pneumoniae* C3091 biofilm, compare to type 1.²⁷ Fluorescence detection of the adherent fimbriae SEF17 in *Salmonella enteritidis* confirmed the association of the fimbriae with aggregated cells of the biofilm.²⁸ The microbial colonization of surfaces is a very complex process and depends on the generation of extracellular molecules. EPSs are the major metabolites of bacteria, which stick the cell to other substances.²⁹ EPSs account for a large proportion of the dry weight of the biofilm. Protein and polysaccharides are the main components of the EPSs and play a major role in the biofilm formation. The production of EPSs occurs in the whole stage of biofilm formation.³⁰ EPS molecules enhance the interaction among microorganisms, which determines the process of the cell aggregate formation on a solid surface. Studies have shown that modification of the EPS components can affect the formation of virulence and pathogens related to biofilm-associated infections.³¹ For the *Pseudomonas fluorescens* strain B52, the polysaccharides associated with the planktonic forms are different from biofilm polysaccharides, and one study reported that the polysaccharides in the biofilm had glucuronic and guluronic acids as the main components, showing that biofilm formation produces more polysaccharides than free bacteria.³² In conclusion, it finds that flagellum, pili, fimbriae, and the EPSs of bacteria secretion play a role in promoting biofilm formation.



3.2 Surface characteristics

While biofilm forms in a certain material carrier, the character of the surface, such as the carrier interface, electrostatic, hydrophobic, interface roughness, and morphological characteristics, will affect the cell attachment and biofilm formation, with the roughness of the interface in particular playing a major role. Furthermore, the effect of surface roughness on the biofilm is conditional. It was found that *L. monocytogenes* formed a strong biofilm, which differed in surface roughness at 30 °C. In contrast, the ability of *L. monocytogenes* to form a biofilm at 15 °C decreased with the decreasing roughness of the surface.³³ In addition, there are different consequences for the roughness of a nanoscale surface that affect bacterial attachment. *E. coli*, *P. aeruginosa*, and *S. aureus* show a greater tendency to adhere to “nanosize” surfaces.³⁴ Furthermore, the chemical composition, critical surface tension, surface energy, hydrophilicity or hydrophobicity, and surface charge on the surface of the adherent material also have a great influence on bacterial attachment, leading to a different ability to adhere to a surface. It was found that the attachment of the hydrophobic matrix of the strains was greater than the hydrophilic surface, and due to the hydrophilic surface, *i.e.*, polyurethane, bacterial attachment decreased.³⁵ Proteins and high concentrations of other nutrients promote the attachment of a biofilm. A study showed that nutrient-rich media containing glucose, vitamin K, and other nutrients enhanced the formation of *Enterococcus faecalis* biofilms, which reached maturity at 72 h.³⁶ In summary, the characteristics of a surface, such as roughness, hydrophilicity or hydrophobicity, and nutrients, can contribute to biofilm formation as the environmental conditions change.

3.3 Gene regulation

Generally, biofilm formation is mediated by the production of the polysaccharide intercellular adhesin (PIA), which is synthesized with the enzyme encoded by the *ica* operon. However, some bacteria may form a protein biofilm, regulated by fibronectin-binding proteins (FnBPs),³⁷ which forms PIA-dependent and PIA-independent biofilms. Among these, the FnBPs-mediated protein biofilm does not exist in fibrous, net-like structures, and ethanol can induce protein biofilm formation.³⁸ Another study of the *S. epidermidis icaC* IS256 insertion mutant found that the transcription of *aap* encoding the accumulation-associated protein Aap was enhanced in a producing a proteinaceous biofilm, while transcription of the Bap-homologous protein gene *bhp* was down-regulated. The results showed that PIA-independent biofilms differed from the wild type in gene regulation.³⁹ PIA is the main biofilm component, which is also known as poly-*N*-acetylglucosamine (PNAG).³⁹ PIA with its positive charge can be easier to combine with a negative charge surface. The *icaADBC* locus includes four genes (A, D, B, C), which are affected by environmental conditions. *IcaA* encodes the *N*-acetylglucosamyl transferase, being responsible for the synthesis of PIA, and the co-expression of the *icaD* *in vitro* increases the activity. *IcaB* encodes deacetylase, which is responsible for the maturation of the PIA, and the trans-membrane protein of *icaC* appears to be involved in the polysaccharides involved in externalization and extension.⁴⁰ The

transcriptional level of *ica*, which encodes the essential enzyme for PIA biosynthesis, was reduced after treatment with thiols, resulting in the inhibition of PIA biosynthesis and an obvious inhibition of biofilm formation in *S. aureus*.⁴¹ Real-time PCR showed that the mutation in the *sarA* gene led to down-regulation of the *ica* operon transcription, and that *sarA* can activate the *S. aureus* development of biofilm by both enhancing the *ica* operon transcription and by suppressing the transcription of either the protein involved in the turnover of PIA/PNAG or a repressor of its synthesis.⁴² In addition, the *pel* genes encoded enzymes were involved in the production of polysaccharides. *P. aeruginosa* PAK strains, which construct *pel* gene mutants, and there are serious flaws in mutants in the solid attachment process of the initial biofilm formation, proposed *pel* gene cluster regulate biofilm formation of Gram-negative bacteria. However, *pel* gene clusters may be conserved in other Gram-negative bacteria, since the *pel* mutants in *P. aeruginosa* PAK had little influence on biofilm initiation.⁴³ Here, the *pel* operon associated with quorum-sensing regulation may regulate the chemical complementation of 3-oxo-dodecanoyl homoserine lactone to restore the biofilm formation ability, since transcription of the *pel* operon was greatly reduced in *lasI* and *rhlI* mutants.⁴⁴ To sum up, except for the common gene regulation of the *ica* operon, like the *pel* operon, other gene regulation will likely be discovered in the future.

3.4 Quorum sensing

In previous studies, quorum sensing has been demonstrated to play an important role in biofilm formation. Quorum sensing is a cell-to-cell communication process that enables bacteria to secrete special signals in response to changes in the cell density of the surrounding microbial community. Bacteria sense the quorum sensing density through these molecules. The quorum sensing can be turned “off” with a few bacteria in the environment. When the number of bacteria reaches a certain threshold, the activation of the corresponding genes are expressed in cells, and as more signal molecules release, it can lead to bacteria secreting toxins, biofilm formation, and bioluminescence with the quorum sensing “on”⁴⁵ (Fig. 2a). Quorum sensing regulates the whole stages of biofilm formation, which activates certain genes in the bacteria to secrete the extracellular matrix, such as EPS and protein, and gradually a full biofilm structure is formed, in which the bacteria have drug resistance. The normal operation of a quorum-sensing system requires the participation of signal molecules, and different types of bacteria secrete different signal molecules, such as AHL secreted by Gram-negative bacteria, AIP secreted by Gram-positive bacteria, and AI-2 secreted both by Gram-negative and Gram-positive bacteria (Fig. 2b). However, the regulation of biofilm formation is complex and involves several regulatory mechanisms.⁴⁶ AI-2 and LuxS seem to act as a regulator of biofilm formation and LPS synthesis in sessile *K. pneumoniae* cells, since the mutations in LuxS and the AI-2 transport systems induced an increase in the expression of two lipopolysaccharide-synthesis-related genes.⁴⁷ *P. aeruginosa* employs acyl homoserine lactone signals, with two AHL signaling systems, to express genes for the production of polysaccharides, rhamnolipid, and other virulence factors.⁴⁶



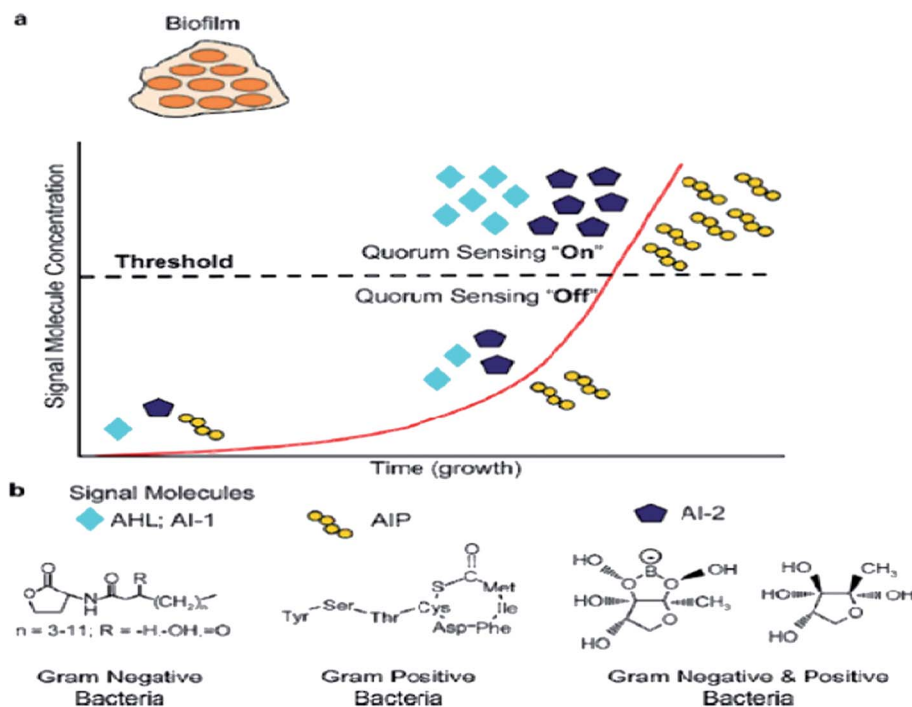


Fig. 2 Schematic from quorum sensing "on" to quorum sensing "off". (a) Signal molecules are generated by the bacteria and accumulate in the extracellular environment. Once the signal molecules reach a certain threshold, biofilm formation occurs with quorum sensing "on". (b) Construction of AHL, AIP, and AI-2, which are signal molecules from various bacteria.

The signal molecules of the Gram-negative bacteria quorum-sensing system are mainly *N*-acyl homoserine lactones (AHLs) (Fig. 2b), which are synthesized by LuxI-type enzymes (AHLs synthetase) under certain environments. AHLs, which are able to diffuse freely through the bacterial membrane, can reach the extracellular cells through specific channels and can accumulate in the environment. When the AHLs concentration in the environment reaches a certain threshold, AHLs automatically enter the cell and combine with intracellular LuxR (regulatory protein), which causes an expression of the bacterial cell-specific functional gene.⁴⁸ 4-Coumaroyl-homoserine lactone synthase is another AHL synthetase, which produces *p*-coumaroyl-homoserine lactone (HSL). Many Gram-negative bacteria produce and detect several autoinducers, such as C4-HSL, 3OH-C4-HSL, and Iso valery-HSL, and different kinds of HSL bind to the receptor through different structures.⁴⁹ *Aeromonas hydrophila*, the Gram-negative bacteria, possesses an *N*-acylhomoserine lactone (AHL)-dependent quorum-sensing system based on the *ahyRI* locus. Research showed that the *ahyI* mutant cannot produce C4-HSL or form a mature biofilm, but the addition of exogenous C4-HSL partly restores the biomembrane differentiation defects, and it has been supposed that the *A. hydrophila* LuxR homolog is responsible for facilitating biofilm maturation via C4-HSL/C6-HSL.⁵⁰

The signal molecules of the Gram-positive quorum-sensing system are mainly autoinducing peptides (AIPs) (Fig. 2b). Bacteria sense the environment through two-component proteins and transmit the signal to the cell through the mechanism of phosphorylation and dephosphorylation, and regulate the expression of related genes in a cell.⁵¹ Since AIP cannot pass

through the cytoderm by itself, quorum sensing will play a role in the ATP-binding cassette transporter delivery system or in other membrane channel protein transport to the extracellular systems.⁵² The auxiliary gene regulator (*agr*) operon in *S. aureus* possesses the *agr* quorum-sensing system in response to AIPs.⁵³ When reaching the threshold level, AIP will bind AgrC and encode the necessary attachment molecules for biofilm formation. In the *agr* quorum-sensing system of *S. aureus*, the repression of *agr* is necessary to form a biofilm, and the addition of AIP or the depletion of glucose can lead to *agr* activation in the biofilm initial detachment.⁵⁴

The LuxS/2 autoinducer2 (AI-2) quorum-sensing system is widely present in Gram-positive and Gram-negative bacteria, known as the interspecies quorum-sensing system (Fig. 2b). Its signal molecule, AI-2, is considered to be a universal signal molecule and involved in regulating the biofilm of many bacteria as the number of cells increases.⁵⁵ It has been reported that the synthesis, secretion, and signal transfer of AI-2 is regulated by the LuxS-regulated operon in *E. coli*. The precursor to AI-2 is 4,5-dihydroxy-2,3-pentanedione (DPD), a product of the LuxS enzyme in the catabolism of *S*-ribosylhomocysteine, which is a byproduct of the *S*-adenosyl methionine (SAM) metabolism, and SAM is widely present in various microorganisms. Since the intramolecular cyclization of DPD in organisms may generate different AI-2 molecules, different AI-2 signals are produced by different kinds of bacteria. When AI-2 has been formed in the AI-2 biosynthesis pathway, it is exported into the extracellular medium directly by the lipid bilayer. With more bacteria growth, AI-2 increasingly accumulates in the extracellular membrane. Finally, through the Lsr transporter, which is synthesized in the Lsr



operon, AI-2 is imported into the intracellular membrane. When the accumulation of AI-2 reaches a certain threshold, the extracellular membrane AI-2 will enter into cells by LsrACB, resulting in the expression of the *lsrACDB* gene relevant to biofilm formation (Fig. 3). Researchers found that the LuxS mutant, without a lack of AI-2, enhanced biofilm formation and reduced adhesion ability.⁵⁶ AI-2 could increase the biofilm formation and adhesion of *A. pleuropneumoniae* independent of LuxS, and growth under iron-restricted conditions could be controlled by LuxS. AI-2 can decrease biofilm formation in *S. aureus* via *icaR* activation.⁵⁷ AI-2 may play different roles in different bacteria, since several AI-2 analogs were found to function as synergistic quorum-sensing agonists in *Vibrio harveyi*, while two of these analogs inhibited quorum sensing in *P. aeruginosa*.⁵⁸ However, other researchers have shown that the exogenous addition of *in vitro* synthesized AI-2 has an inhibitory effect on biofilm formation by *B. cereus* and promotes dispersion of the biofilm.⁵⁹ The study of the *Streptococcus oralis* LuxS mutant found that AI-2 acts as an interspecies signal and its concentration is critical for biofilm formation, and also an optimal concentration of DPD was determined, above and below which biofilm formation was suppressed.⁶⁰ Many studies have shown that the inhibition of quorum sensing can depress the formation of biofilms, and have also demonstrated that baicalin, flavonoids, emodin, and other quorum-sensing inhibitors play an important role in the inhibition of biofilm formation.⁶¹

3.5 Environmental factors

Environmental factors regulate bacterial biofilm formation through several pathways. Mature biofilms change with the environmental conditions in order to obtain the best nutrients to survive and reproduce. At either extreme, nutrient-rich, or very nutrient-poor conditions, biofilms will be inclined to be planktonic.⁶² Researchers have found that the biofilm formation of

Lactobacillus rhamnosus GG *in vitro* is associated with a gastrointestinal environment, including a low pH, high osmolarity, bile, mucin, and nondigestible polysaccharides.⁶³ The adhesion stage of the *E. coli* O157:H7 biofilm, in addition to the functioning of quorum sensing and hypertonic pressure promotes bacterial adhesion. Bacteria formed a biofilm in LB broth containing 1 M sucrose, while *E. coli* K-12 IAM1264 did not form a biofilm in LB broth containing 1 M NaCl, indicating that there were different concentrations of hyperosmotic environment in different solutions during the biofilm formation.⁶⁴ The biofilm formation of *V. parahaemolyticus* varies depending on the temperature, where a higher temperature (15 °C to 37 °C) induces stronger biofilm formation, but a lower temperature (4 °C or 10 °C) leads to the attachment of bacterial cells as monolayers.⁶⁵ At a temperature of 20 °C or 37 °C, the *stx* coding gene of biofilm could be transferred to potentially pathogenic *E. coli* O157:H7, where the infection rate at 37 °C is higher than at 20 °C.⁶⁶ The biofilm toxicity mechanism of *Vibrio cholerae* may be the adaptive mechanism for the environmental reactions.⁶⁷ However, another study showed that *V. cholerae* and *P. aeruginosa* produced less biofilm at the higher temperature of 37 °C compared with at 30 °C, indicating that the temperature of biofilm formation was different according to different strains of bacteria. In addition, at pHs 5.5, 7.5, and 8.5, pathogenic bacteria, such as *P. aeruginosa*, produced more biofilm at higher pH.⁶⁸ In summary, the temperature, pH, and surface conditions also may play a vital role in biofilm formation under quorum-sensing regulation.

4. Control and removal strategies

Foodborne pathogenic bacteria cause bacterial food poisoning, which seriously endangers human health and can cause great economic losses, and have become one of the most prominent

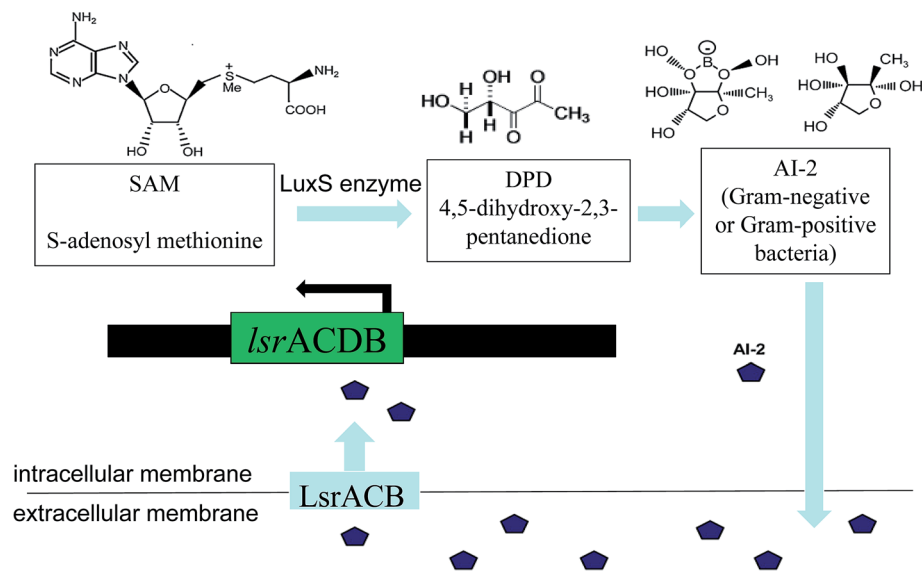


Fig. 3 Schematic of the AI-2 synthesis and AI-2 quorum-sensing regulation. First, picture shows the enzymatic conversion from *S*-adenosyl methionine (SAM) to 4,5-dihydroxy-2,3-pentanedione (DPD), and then DPD is converted to AI-2. Second, AI-2 is secreted by the bacteria and accumulated in the extracellular environment. Finally, a certain concentration of AI-2 enters the intracellular membrane, resulting in gene expression.



food hygiene problems. Foodborne pathogens and their biofilm widely exist in the natural environment and in many areas in life, and they can form in a variety of biological materials, such as, surfaces and mucosa *in vivo*.⁶⁹ Biofilms can not only protect the bacteria resistance against clinical antibiotics and fungicides in industrial facilities, but can also help the bacteria fight against the body's immune clearance effect. Thus, foodborne pathogens and their biofilms can cause great harm to human health, and make food hygiene increasingly difficult to remove such harmful materials, so effective methods need to be taken to prevent and remove biofilm. It's well known that bacteria widely exist on food surfaces, pipelines, air, and other food contact surfaces. Furthermore, it's easy to remove bacteria by using disinfectant compared with the removal of biofilm. However, in certain environments, bacteria can develop into biofilm. Many studies have also come up with countermeasures, and the prevention of biofilm initial attachment by disinfection of food contact surfaces is one of the most important strategies, such as with essential oils and bacteriophages. In a study on biofilm control, vanillin addition showed the most substantial reduction of biofilm formation, since vanillin may interfere with quorum-sensing molecules.⁷⁰ There are different strategies for different parts of the cycle of biofilm development: (i) disinfection and cleaning, before a biofilm develops, (ii) removal of mature biofilm using both mechanical treatment and chemical reagents, and the (iii) prevention of biofilm dispersion, to hinder other biofilm formation (Fig. 4).

4.1 Prevention of biofilm formation

4.1.1. Antibacterial. The best way to prevent biofilm formation is the inhibition of bacteria growth. It is well known that there are many different methods to sterilize food and

processing equipment, and many kinds of bactericidal agent are popular and common in the food industry due to their convenience and operability. Nowadays, food additives have gradually become one of the most important type of bactericidal agents in the food industry. Except for common antiseptics, some food additives, such as colorants, surfactants, and flavorants, possess strong antibacterial activity against foodborne pathogens. Monascus pigments, known as food colorants, have been found to inhibit *E. coli* with the minimum inhibitory concentration of 2.5 mg ml^{-1} .⁷¹ Sucrose fatty acid esters, commonly used as surfactants, have demonstrated the inhibition of five foodborne pathogens, namely *B. cereus*, *B. subtilis*, *S. aureus*, *E. coli* O157:H7, and *Salmonella typhimurium*.⁷² Thus, the addition of food additives may play a dual role in food sterilization. A good way of biofilm prevention is to prevent the bacteria growth, so antibacterial food additives in food have a potential to prevent bacteria growth and biofilm formation. Except for some resistant foodborne pathogenic bacteria, a large number of bacteria can be removed by disinfecting. The addition and use of these food additives facilitate a big reduction in foodborne pathogens, decreasing the possibilities of biofilm formation. Besides, food additives may show anti-biofilm activity under some conditions. Nisin A bioengineered derivative in combination with available food additives, such as cinnamaldehyde ($35 \text{ } \mu\text{g ml}^{-1}$) or citric acid ($175 \text{ } \mu\text{g ml}^{-1}$), can eradicate the *L. monocytogenes* biofilm.⁷³ It can be concluded that food additives could enhance the antimicrobial treatment of biofilms in the food industry.

4.1.2. Inhibition of biofilms. In the initial attachment state of a biofilm, environment factors and quorum sensing contribute to the biofilm formation. Biofilm formation can be inhibited by a single treatment since a mature biofilm cannot be

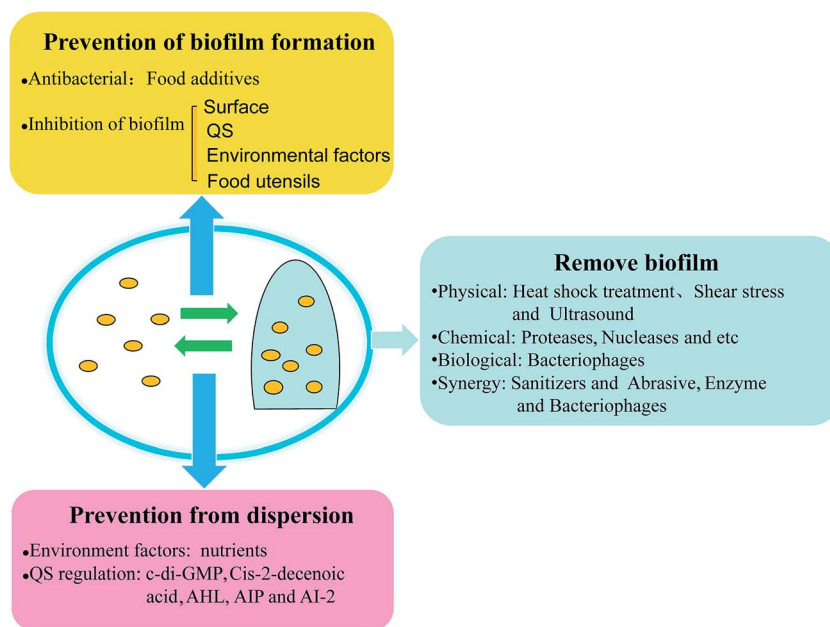


Fig. 4 Anti-biofilm strategies for food safety prevention and removal. Models in the circle are biofilm formation and dispersion (bacteria are depicted as yellow circular types; mature biofilm is pictured with a blue 3D biofilm structure). Mature biofilm constitutes a 3D biofilm structure of a 3D polymer network that interconnects and relatively immobilizes biofilm cells.



developed completely. Cleaning and disinfection are universal methods to disrupt the initial attachment of biofilms. In the food industry, cleaning and disinfection are the key steps in preventing food contamination. As the food is exposed to airborne pathogens, it requires regular cleaning and disinfection to prevent food contamination, and now it is also recognized that hindering the initial attachment of biofilm can prevent biofilm formation. The attachment of microbes to a surface is a fast process and takes only a few hours, mainly due to environmental factors. There are different strategies to prevent biofilm formation:

(i) Measures aimed at the contact surface. In a study, it is easy to form the biofilm in outside moisture and on nutrient-rich surfaces, so it vital to maintain a dry and clean environment. A good cleaning process can remove food residues and other compounds, preventing the accumulation of nutrients, which decreases the conditions for biofilm formation. Cleaning-In-Place (CIP) is a process that allows the entire system to be cleaned without manual disassembly of the entire system or manual cleaning by an operator, which involves spraying the entire plant on the surface or inside. The equipment can be effectively cleaned in time with increased turbulence and flow. The addition of caustic and nitric acid additives can enhance the removal of bacterial biofilm of CIP.⁷⁴ Also, with regard to an *S. aureus* thick biofilm, CIP cleaning agents, such as strong alkaline CIP cleaning agents, have been demonstrated to function effectively for the removal of *S. aureus* biofilm, so CIP cleaning with strong alkaline acidic CIP cleaning agents is recommend to remove biofilm completely in the pipelines in the food environment.⁷⁵ Studies have shown that different food matrices have a strong impact on the efficiency of *L. monocytogenes* in cleaning and disinfection. Cleaning and disinfection also lead to the inhibition of biofilm formation of the initial stage without sterilization.³³ Many different disinfectants can be used for cleaning, including surfactants and alkaline products, which can suspend and dissolve food residues. Many studies have been performed that show that sodium hypochlorite (NaClO), hydrogen peroxide (H₂O₂), and ozone (O₃) can be used as disinfectants. Rinsing with 3% NaClO on the root canal has a strong bactericidal effect on biofilm. Another study showed that *E. faecalis* cells in the starvation phase are responsive to 5.25% NaClO during biofilm formation, but the impact on biofilm decreased as the biofilm matured.⁷⁶ H₂O₂, at a concentration of 3% and 5%, rapidly eradicates *S. epidermidis* biofilms, as hydrogen peroxide at 3% and 5% led to a log reduction of the biofilm after incubation for 5 min, while povidone-iodine was less effective.⁷⁷ With high concentrations of gaseous and aqueous O₃ applied dose-dependently, biofilm cells can be almost eliminated by highly concentrated aqueous O₃ (20 μg ml⁻¹) compared with invalid H₂O₂.⁷⁸ Essential oils are capable of inhibiting or slowing the growth of bacteria since they contain a wide variety of secondary metabolites. Natural antimicrobial agents, such as the essential oil of *Satureja thymbra*, can be used as food biofilm disinfectants, and have been shown to remove the biofilm of *Staphylococcus simulans* and *Lactobacillus* formed on stainless steel.⁷⁹ Kavanaugh and Ribbeck demonstrated that cassia, peru balsam, and red thyme essential

oils are more effective in disc diffusion assay in eradicating *Pseudomonas* and *S. aureus*, compared with selective important antibiotics.⁸⁰ However, a biofilm cannot be removed completely without a disinfectant. Furthermore, nutrient limitation is one way to control biofilm development without increasing the use of disinfectant. For instance, biofilm development can be limited by a combination of organic carbon removal and enhanced disinfectant persistence.⁸¹

(ii) Measures aimed at quorum sensing. Biofilm formation is regulated by quorum-sensing molecules, which in many Gram-positive bacteria are small peptides, whereas in Gram-negative bacteria, these are *N*-acyl-*l*-homoserine lactones. Therefore, the use of something that can disturb the production or transportation of quorum-sensing molecules can decrease biofilm formation. In addition to traditional disinfectants, such as chlorine, hydrogen peroxide, now there are also a large number of studies on quorum-sensing inhibitors or quorum quenchers. Last but not least, the selection of quorum-sensing inhibitors depends on the types of quorum-sensing system. Studies have shown that a variety of traditional Chinese medicine components inhibit the formation of biofilm by inhibiting quorum sensing. Emodin and rographolide have a strong permeability in *S. epidermidis* biofilm.⁸² Extracts of radix, radix scutellariae, and rhubarb can improve the antibacterial activity with penicillin, gentamicin, and other four kinds of antibiotic.⁸³ Rosa rugosa tea polyphenol extract exhibited inhibition in the swarming motility (84.90% and 78.03%) and biofilm formation (67.02% and 72.90%) of *E. coli* K-12 and *P. aeruginosa* PAO1, showing that polyphenols and flavonoid may block bacterial quorum-sensing systems and biofilm formation.⁸⁴ In addition, besides synergistic effects on the sterilization of *in vitro* biofilms, when treating mice with both quorum-sensing inhibitors and tobramycin, there could be achieved synergistic antimicrobial efficacy, showing synergistic effects on the killing of *P. aeruginosa* biofilms *in vivo*.⁸⁵ Moreover, quorum quenchers are of interest since they can weaken the virulence factors of bacteria and promote the removal of biofilms. In this study, those bioactive agents from coral associated bacteria could inhibit the production of quorum-sensing-dependent virulence factors, such as swarming motility and biofilm formation in *Serratia marcescens*, which is promising to treat drug resistant bacteria pathogens.⁸⁶

(iii) Measures aimed at environmental factors. Temperature, pH, and water hardness are important factors affecting the effectiveness of disinfectants. Generally, high temperature and low pH could be in favor for biofilm removal.⁶⁸ Regarding environmental stress factors, a study of *S. aureus* reported that most bacteria formed more biofilm at 37 °C, and had a higher biofilm production with the addition of glucose. Thus, to choose the safe environmental condition is essential to reduce the chances of biofilm formation on food contacts surfaces and to insure food safety.⁸⁷

(iv) Measures aimed at food utensils. It is widely known that the antibacterial ability of silver nanoparticles (AgNPs) have been used in the rapid detection field, while the anti-biofilm activities of AgNPs are still evolving. A *P. aeruginosa* biofilm was inhibited by the addition of 20 μg ml⁻¹ of AgNPs with an



inhibition rate of 67%. However, the anti-biofilm activities of AgNPs decreased as the bacterial concentration was enhanced.⁸⁸ The anti-biofilm ability of AgNPs depends on the form of application, 0.1% AgNP could not disrupt the *E. faecalis* biofilm structure, while 0.02% AgNP gel caused the disruption of the structural integrity of the biofilm, which showed that AgNPs can be used as a medicament to eliminate biofilms.⁸⁹ With regard to the anti-biofilm activities of AgNPs, the application of AgNPs on food utensils can prevent bacteria growth and biofilm formation. Moreover, the usage of AgNPs on utensils, such as coating on surfaces and vessels, is promising to greatly decrease the application of antiseptics.

4.2 Removal of biofilms

It is difficult to remove a biofilm once formed, since mature biofilm have been shown to be highly resistant to a lot of antimicrobials, let alone the bacteria protected in biofilm. The removal of mature biofilm has thus aroused growing concern. It is obvious that a single method cannot disrupt biofilm efficiently. Here, treatments are classified as physical, chemical, biological, and synergetic treatment to improve the efficiency of biofilm disruption.

4.2.1. Physical treatment. Physical treatments, including heat shock treatment, shear stress, and ultrasound, are widely used in the food pipeline since there is no residue left over in the removal process. Commonly, physical treatment can lead to a destruction of the biofilm structure. In a study into eliminating *Legionella* in biofilm, heat shock treatment (70 °C for 30 min) was found to be inefficient in water because *Legionella* in the second heat shock was thermo-acclimated, which showed that thermal disinfection had not enough ability to remove *Legionella* and its biofilm.⁹⁰ Shear stress is one of the critical influences on stable biofilm formation. Furthermore, under the conditions of shear stress, it will decrease mature biofilms and tend to produce an initial biofilm. However, high shear stresses destroy the diversity of biofilms. To some extent, some kinds of biofilm can be destroyed by high shear stresses.⁹¹ As for sterilization in the food industry, ultrasound treatment is often necessary for certain instruments and for things that cannot be heated or stressed. Ultrasound treatment contributes to bacteria differently. For one thing, bacterial viability can be enhanced by ultrasound. For another, biofilms can be controlled by ultrasound treatment. The different influences of ultrasound to bacteria depend on the ultrasound frequency, treatment duration, ultrasound intensity, *etc.* Studies have shown that biofilms can be completely removed from the surface with low-frequency ultrasound (LFU) (5 min, 0.4 MHz, 37 °C).⁹² Besides, surrounding tissue injuries and obvious changes of temperatures have not been found following LFU treatment.⁹² Thus, LFU is supposed to be a safe and mild method for biofilm disruption. More importantly, when aiming for an enhancement of efficiency, ultrasound usually is not used alone in pathogens removal. Without vancomycin, ultrasound can produce a bactericidal effect on biofilm by itself. With the treatment of ultrasound (5 min, 300 kHz) combined with vancomycin, *S. epidermidis* biofilms thickness was shown to be more

reduced, while the biofilm permeability was evidently promoted.⁹³ Therefore, the combination of ultrasound-mediated micro bubbles and chemicals is worth researching and applying in the treatment of biofilm infections. Briefly, physical treatments reflect inefficiencies in biofilm removal, since biofilm will be disrupted sufficiently with physical treatment combined with anti-biofilm chemicals. It is thus recommended to eliminate the initial attachment of biofilm formation by physical treatment.

4.2.2. Chemical treatment. When a mature biofilm occurs, it is proved that only physical treatment cannot achieve the best effect on the biofilm removal, since approximate 76% of biofilm will remain on the surface without applying a chemical addition. Many studies have demonstrated that chemical reagents play an important role in the removal of biofilm and bacterial cells. Both physical treatment and chemical reagents have a synergistic effect to remove biofilm, so it is vital to enhance the physical treatment and antimicrobial ability. For eliminating or removing biofilm, fungicide, to kill bacteria, must penetrate the EPSs and contact the microbial cells.⁹⁴ As previously mentioned, the matrix of EPSs mainly consists of polysaccharides, proteins, and eDNA. Thus, some extrinsic substances that induce detachment of the matrix of the EPS-detachment-promoting agents can react with EPS with slow diffusion of the agent into the biofilm. Finally, the bacteria are exposed to a bactericidal agent. The chemical reacts with the EPS complex, which greatly enhances the removal of the biofilm. Detachment-promoting agents attack the EPSs to implement a control strategy for biofilm removal.⁹⁵ It is well known that the enzyme response to the EPS substances can remove biofilm, such as proteases and nucleases. Enzymes are proteins with catalytic activity, which can facilitate chemical reaction with the extra cellular matrix of a biofilm. The cell-wall-degrading enzyme SAL-2 could destruct *S. aureus* biofilms at a concentration of about 1 $\mu\text{g ml}^{-1}$. Compared to the *S. aureus* bacteriophage SAP-2, which exerts a broader spectrum of inhibitory activity, this will be a promising agent for treat biofilm infections.⁹⁶ In fact, several proteases secreted by *S. aureus* itself can change the biofilm integrity. However, the regulator of *S. aureus* proteases, which is a regulator of toxins (rot) and an inhibitor of proteases, has been found to disturb biofilm formation. Rot is produced at the period of biofilm formation, and thus, endogenous proteases almost have no effect on biofilm matrix. Exogenous proteases, such as *S. aureus* cysteine proteases SspB or SspA, caused the reduction and removal of biofilm formation.⁹⁷ Another study found that proteinase exerted a conflicting function on *Rhodococcus ruber* (C208) biofilm formation. Trypsin turns dense biofilm into a monolayer biofilm. On the contrary, proteinase K formed a robust and multilayer biofilm, presuming that proteinase K resolved the protein-induced biofilm maturation instead of the EPS component.⁹⁸ In a complex matrix of biofilm, a combination of protease and amylase was used to remove attached biofilms, while a scanning electron microscopy study found that both Everlase and Savinase degrade EPSs more effectively.⁹⁹ Since eDNA plays a vital role in the *S. aureus* biofilm matrix, thermonuclease (*nuc*) is the main anti-biofilm factor to inhibit biofilm formation. The *nuc* mutant



of *S. aureus* caused the increase of biofilm, so *nuc* is considered as a regulator of the biofilm formation.¹⁰⁰ Besides, liposome-encapsulated biocidal agents can penetrate the biofilm matrix, adsorb bactericides to the bacteria and sterilize the bacteria. Anionic liposomes are more effective in inhibiting the biofilm growth of *Streptococcus sanguis* C104.¹⁰¹ Chemical agents can attack or react with the EPS complex, which would enhance physical treatment.

4.2.3. Biological treatment. Bacteriophages, the efficient biological methods, are viruses that can infect bacteria and affect biofilm formation. When the bacteriophages contact with biofilm and bacteria, the effect depends on the susceptibility of the biofilm cell to the bacteriophages and the availability of the receptor site. Bacteriophages are capable of targeting bacteria within biofilms directly instead of attacking EPSs. Different scavenging mechanisms can explain this phenomenon. Enzymes produce some phages that can destruct the EPS component, and then the bacteria exposed to surface are infected by phages. Furthermore, phages infect some bacteria at the edge of EPSs, resulting in the increases of more and more phages. The reduction of bacteria on biofilm causes the elimination of EPS material, and thus the biofilm is completely removed in the end.¹⁰² With the addition of phage K and modified derivatives on an *S. aureus* Xen29 biofilm, the results showed that more and more biofilm formation was inhibited as time went by, and it was completely controlled over a 48 h period. Thus, phage K may be a promising method for successfully preventing and removing *S. aureus*.¹⁰³ The higher phage $\phi 15$ doses (10^4 and 10^6 pfu) on *Pseudomonas putida* biofilms (PpG1 and RD5PR2) showed that the degradation of EPS occurs in parallel with the death of planktonic bacteria, which showed that the proper EPS depolymerases secreted by the novel phage are crucial for pathogen removal.¹⁰⁴ Except for a lower biofilm resistance to the phages, the study showed that the pretreatment of cocktail phages reduced the 48 h mean biofilm cell density by 99.9%, suggesting the potential of applying phages mitigates biofilm formation by clinically relevant bacteria.¹⁰⁵ *Proteus mirabilis* and *E. coli* biofilm clearance rates were capable of arriving at 99.9% with the treatment of lytic bacteriophages. Moreover, about 90% biofilm was reduced when catheter sections were contacted with lytic bacteriophage.¹⁰⁶ Much research considers the applications of bacteriophage as a potential strategy for biofilm removal on medical device surfaces, since the clearance of biofilm can achieve 99%. However, similar research on pipelines in the food industry is less mentioned. Since bacteriophages are adequate and accessible compared to enzymes, the use of bacteriophages on the surfaces of food and utensils will be a promising approach.

4.2.4. Synergy. Though physical treatments are usually used in food sterilization, such as high pressure thermal sterilization, their usage on biofilm removal is inadequate. Enzyme targeting can be efficient to remove biofilms. Since EPSs are composed of different components, a single enzyme cannot remove all bacteria efficiently. Thus, enzymes controlling against biofilms, with nontoxic and instability characteristics, should be improved further. Moreover, the applications of phage and industrialized development are still evolving. In most cases, a single strategy of biofilm destruction is less used

since the removal in such single methods is incomplete. Thus, the union of these methods must be widely applied in the food industry. A combination of abrasive mechanical disruption and spraying with sanitizers with 6% levulinic acid and 0.6% sodium dodecyl sulfate on stainless steel food processing equipment, which reduced the number of *L. monocytogenes* biofilms by 5.28 log CFU, showed that physical and chemical treatment together may provide a novel method for biofilm control.¹⁰⁷ Physical treatment usually disrupts the biofilm mechanically, but the structure of the biofilm often retains its integrity. The addition of sanitizers can sterilize bacteria exposed to the surface after physical treatment, which increases the removal efficiency. Current anti-biofilm methods are not always enough for the removal of foodborne pathogens. *L. monocytogenes* biofilms treated with $100 \mu\text{g ml}^{-1}$ of DNase for 24 h still retain about 25% biofilm. However, the addition of proteinase completely inhibited biofilm formation.¹⁰⁸ Nowadays, a combination of antibiotics and other methods is usually used to investigate biofilm removal in order to improve its removal efficiency. As the study shows, single bacteriophage or antibiotics treatment may result in the emergence of resistant cells. Phage treatment in combination with tobramycin resulted in greater than 99% reduction in both *E. coli* and *P. aeruginosa* biofilms.¹⁰⁹ Chlorine is a traditional disinfectant in the food industry for water disinfection. A lower phage concentration (3.8×10^5 PFU mL^{-1}) combined with chlorine removal $96 \pm 1\%$ of biofilms occurred in less than 2 days, leading to the lowest cell density and viability. On the contrary, the phages (6×10^7 PFU mL^{-1}) only removed $75 \pm 5\%$ of pre-existing *P. aeruginosa* biofilms. It has been shown that the combination treatment of phages and chlorine is a promising strategy to control water biofilms.¹¹⁰ According to the removal mechanism of phages, the use of phages with the addition of enzymes may kill bacteria highly efficiently and completely, which accelerates the sterilization speed. Or the use of enzymes united with sanitizers plays a distinct role in biofilm removal, since sanitizers also destroy bacteria with the treatment of enzyme. Although enzyme treatment shows the great potential for biofilm removal, the combined chlorine-enzyme treatment reflects a modest biofilm control activity. The use of both treatments demonstrated a higher removal efficiency on high-density polyethylene.¹¹⁰ Furthermore, the regulation of temperature, pressure, and moisture is strictly controlled in the food industry for food safety. Due to various bacteria and biofilm existing on contact surfaces, biofilm control strategies should be varied in different conditions in order to enhance the removal efficiency. Synergistic treatment would be a promising and efficient strategy for the prevention and removal of foodborne pathogens biofilms.

4.3 Prevention of dispersion

The biofilm dispersion-spontaneous regulation of biofilm, the last step in the biofilm developmental cycle, not only produces another new biofilm, but also causes human infection by free bacteria, since dispersed bacteria may carry different phenotypic properties and transcriptional profiles compared to both biofilms and planktonic bacteria, leading to a significantly



increased virulence. Thus, it is necessary to control the biofilm dispersion to prevent serious bacterial infection. Does this mean that biofilms cannot be disturbed? In fact, biofilms cannot be dispersed by the regulation of bacteria themselves, because the dispersed single bacteria will be easier to form another biofilm, and it may occur that the bacteria has a new toxin.²⁴ As mentioned above, it is the signal molecule of quorum sensing that triggers biofilm dispersion. Biofilm dispersion is both affected by the environment factors and *via* regulation by quorum sensing, so its prevention mainly depends on environmental changes. Therefore, prevention from dispersion depends on control of the environment factors and quorum-sensing signals. Chemotaxis protein BdlA (polypeptide chains) activate in response to environmental cues provides biofilm dispersion signal and elevates c-di-GMP levels and protease ClpP, which is required for *P. aeruginosa* biofilms to disperse. It is a cyclic di-GMP that could degrade the protein BdlA and phosphodiesterases, resulting in biofilm dispersion.²³ One study demonstrated that the dispersion deficient phenotype of the *bdIA* mutant was confirmed as an obstacle to biofilm development since the microscopic observations of *bdIA* mutant was similar to the treatment with the biocide H₂O₂. The usage of biocide H₂O₂ may obstruct biofilm dispersion.¹¹¹ When the dispersed gene is inhibited, or the presence of substances in the environment impede dispersion from occurring, the mature biofilm cannot enter the planktonic state, which prevents pathogens from new attachment and prevents human infection to a certain extent. Nutrients increase, such as succinate, glutamate, glucose, and induce cell dispersion of the biofilm, while a nutrient reduction can inhibit dispersion.²³ *Cis*-2-decenoic acid, an organic compound produced in *P. aeruginosa*, which is functionally and structurally similar to the short chain fatty acid (cell-to-cell communication molecules), has shown the ability to induce the dispersion of *P. aeruginosa* PAO1 biofilm,¹¹² and so preventing the production of *cis*-2-decenoic acid is an obstacle to biofilm dispersion. Studies have also shown that mimicking the quorum-sensing signals would induce dispersion of the biofilm, which also means hindering the regulation of the quorum-sensing signals, such as AHL, AIP, and AI-2, to prevent bacteria formation and detachment.²⁴ Signals (febrile-range temperatures, norepinephrine, extracytoplasmic ATP, and nutrient increase availability) induce the release of bacteria from biofilms into free bacteria in a newly developed biofilm model, causing the infection of *Streptococcus pneumoniae*. The study showed that interkingdom signals were recognized by bacteria to stop detachment.¹¹³ Hence, to search for chemicals for preventing biofilm dispersion is meaningful for biofilm disruption and bacteria removal.

5. Conclusions and future perspectives

Foodborne pathogens can attach and produce EPS on many food matrices and environmental surfaces. Pathogenic bacteria can also coexist within biofilms with other environmental microorganisms. The formation of pathogenic biofilms

depends not only on genetic bases and regulation, but also on properties of the substratum and bacterial cells as well as environmental factors, including temperature, pH, surface characteristic, and nutrient components. Pathogenic biofilms have attracted great interest from many research groups involved in food safety. Foodborne pathogens in biofilms formed in different food industry settings are a source of food contamination. With the increased demand for fresh, ready-to-eat, processed foods and for better food safety, many studies are needed to address biofilm control and removal in the food industries.

The control of bacterial biofilms in food processing facilities is vital in food processing environments. An early control strategy mainly employs chemical cleaning, sanitation, and equipment to prevent the biofilm formation, such as CIP.¹¹⁴ The use of a control strategy in food processing facilities is promising to enhance the prevention of bacteria and biofilms. Cleaning and disinfection and the use of effective cleaning procedures with chemical disinfectants are usually mentioned to remove more microorganisms and prevent microbial growth on surfaces. Recently studies have similarly focused on the emerging strategies to control biofilms in the food industry, including cleaning and disinfection, enzymatic treatment, and phages treatment. Simões *et al.*¹¹⁵ regarded the use of enzymes, phages, and bioregulation as a green strategy for biofilms control. It is suggested that the metabolites of some microorganisms can interfere with biofilm formation and development. Surfactin from *B. subtilis* caused biofilm dispersion without affecting cell growth, preventing biofilm formation in *S. enterica* and *E. coli* O157:H7. In addition to biological and chemical alternatives, new physical processes were suggested in this review, such as laser decontamination devices and the conception of an antimicrobial coating on food surfaces. The application of these physical treatments for bacteria attachment prevention still needs to be further investigated. It is surprising to propose protective biofilms as barrier microflora against the potential foodborne pathogens.¹¹⁶ Many previous studies have been sure that disruption of the biofilm could kill bacteria, but this study holds different views. It finds that resident microflora caused the inhibition of the pathogen *L. monocytogenes*, guessing that other resident microflora may form a biofilm, and these protective biofilms could then fight against the formation of foodborne pathogenic biofilms by the activity of competition, exclusion, and displacement. The feasibility of the protective biofilms still needs to be taken into deep consideration, since protective biofilms pose a potential threat. Once a biofilm is destroyed by disruptive factors, foodborne pathogens can rapidly form a biofilm.

Combination technology is a promising new approach, which involves integration with two or more different control techniques to control biofilm. The combination treatments of chemical agents with UV irradiation were shown to remove a *P. aeruginosa* biofilm effectively. In a recent review, conventional and emergent control strategies of biofilms were discussed abundantly, since such control strategies according to different food areas are worth recommending.¹¹⁷ The cycle of biofilm development may exert a great influence on the chosen biofilm



control strategy, since different periods of biofilm should be treated with different methods, resulting in a high efficiency of biofilm removal, which provides a new and targeted solution as a biofilm control strategy.

Nowadays, the conventional control strategies, including good production hygiene, a rational running of the process line, and the effective use of cleaning and disinfectant products, are still used and being developed further. However, due to the increased resistance of biofilms to conventional disinfection processes, a more efficient and environmental friendly control strategy is indispensable to satisfy the needs of food safety in food processing systems. It should be considered that disinfection methods should provide ideal, cost-effective results without any adverse effects on human health and the environment. Therefore, we strongly recommend combination technology because it provides synergistic effects and reduces the material and energy consumption. In addition, the inhibition of biofilms and quorum sensing by natural biological agents will also be helpful for solving biofilm problems.

Acknowledgements

This work has been supported by the National Natural Science Foundation of China (Grant No. 31501582).

References

- 1 S. P. Oliver, B. M. Jayarao and R. A. Almeida, *Foodborne Pathog. Dis.*, 2005, **2**, 115–129.
- 2 X. H. Zhao, J. L. Zhong, C. J. Wei, C. W. Lin and T. Ding, *Front. Microbiol.*, 2017, **8**, 580.
- 3 X. Zhao, C. W. Lin, J. Wang and D. H. Oh, *J. Microbiol. Biotechnol.*, 2014, **24**, 297–312.
- 4 X. Zhao, C. Wei, J. Zhong and S. Jin, *Biotechnol. Biotechnol. Equip.*, 2016, **30**, 1–7.
- 5 W. H. Organization, WHO, Food safety and foodborne illness, <http://www.who.int/mediacentre/factsheets/fs237/en/print.html>, Januray 2002.
- 6 K. Aarnisalo, J. Lundén, H. Korkeala and G. Wirtanen, *LWT-Food Sci. Technol.*, 2007, **40**, 1041–1048.
- 7 M. Nitschke, L. V. Araújo, S. G. Costa, R. C. Pires, A. E. Zeraik, A. C. Fernandes, D. M. Freire and J. Contiero, *Lett. Appl. Microbiol.*, 2009, **49**, 241–247.
- 8 J. W. Costerton, K. J. Cheng, G. G. Geesey, T. I. Ladd, J. C. Nickel, M. Dasgupta and T. J. Marrie, *Annu. Rev. Microbiol.*, 1987, **41**, 435–464.
- 9 M. Simões, L. C. Simões, I. Machado, M. O. Pereira and M. J. Vieira, *Food Bioprod. Process.*, 2007, **84**, 338–345.
- 10 A. K. Bhardwaj, K. Vinothkumar and N. Rajpara, *Recent Pat. Anti-Infect. Drug Discovery*, 2013, **8**, 68–83.
- 11 R. Hengge, A. Gründling, U. Jenal, R. Ryan and F. Yildiz, *J. Bacteriol.*, 2015, **198**, 15–26.
- 12 A. Taglialegna, S. Navarro, S. Ventura, J. A. Garnett, S. Matthews, J. R. Penades, I. Lasa and J. Valle, *PLoS Pathog.*, 2016, **12**(6), e1005711.
- 13 L. Hallstodley and P. Stoodley, *Trends Microbiol.*, 2005, **13**, 7–10.
- 14 M. Klausen, A. Heydorn, P. Ragas, L. Lambertsen, A. Aesjorgensen, S. Molin and T. Tolkernielsen, *Mol. Microbiol.*, 2003, **48**, 1511–1524.
- 15 H. C. Flemming, T. R. Neu and D. J. Wozniak, *J. Bacteriol.*, 2007, **189**, 7945–7947.
- 16 J. Palmer, S. Flint and J. Brooks, *J. Ind. Microbiol. Biotechnol.*, 2007, **34**, 577–588.
- 17 Z. Qin, X. Yang, L. Yang, J. Jiang, Y. Ou, S. Molin and D. Qu, *J. Med. Microbiol.*, 2007, **56**, 83–93.
- 18 N. C. Caiazza and G. A. O'Toole, *J. Bacteriol.*, 2004, **186**, 4476–4485.
- 19 S. M. Hinsä, M. Espinosa-Urgel, J. L. Ramos and G. A. O'Toole, *Mol. Microbiol.*, 2003, **49**, 905–918.
- 20 B. K. Hammer and B. L. Bassler, *Mol. Microbiol.*, 2003, **50**, 101–114.
- 21 M. Otto, *Annu. Rev. Med.*, 2013, **64**, 175–188.
- 22 K. Sauer, M. C. Cullen, A. H. Rickard, L. A. H. Zeef, D. G. Davies and P. Gilbert, *J. Bacteriol.*, 2004, **186**, 7312–7326.
- 23 R. Morgan, S. Kohn, S. H. Hwang, D. J. Hassett and K. Sauer, *J. Bacteriol.*, 2006, **188**, 7335–7343.
- 24 C. Solano, M. Echeverz and I. Lasa, *Curr. Opin. Microbiol.*, 2014, **18**, 96–104.
- 25 C. Prigent-Combaret, G. Prensier, T. T. L. Thi, O. Vidal, P. Lejeune and C. Dorel, *Environ. Microbiol.*, 2000, **2**, 450–464.
- 26 C. N. Murphy and S. Clegg, *Future Microbiol.*, 2015, **7**, 991–1002.
- 27 C. Schroll, K. B. Barken, K. A. Krogfelt and C. Struve, *BMC Microbiol.*, 2010, **10**, 1–10.
- 28 J. W. Austin, G. Sanders, W. W. Kay and S. K. Collinson, *FEMS Microbiol. Lett.*, 1998, **162**, 295–301.
- 29 Y. Chai, P. B. Beauregard, H. Vlamakis, R. Losick and R. Kolter, *mBio*, 2012, **3**, e00184.
- 30 K. Czarczyk and K. Myszka, *Pol. J. Environ. Stud.*, 2007, **16**, 799–806.
- 31 C. Vuong, S. Kocianova, J. M. Voyich, Y. Yao, E. R. Fischer, F. R. Deleo and M. Otto, *J. Biol. Chem.*, 2004, **279**, 54881–54886.
- 32 J. Kives, B. Orgaz and C. Sanjosé, *Colloids Surf., B*, 2006, **52**, 123–127.
- 33 Y. Chaturongkasumrit, H. Takahashi, S. Keeratipibul, T. Kuda and B. Kimura, *Food Control*, 2011, **22**, 1893–1899.
- 34 N. Mitik-Dineva, J. Wang, V. K. Truong and P. Stoddart, *Curr. Microbiol.*, 2009, **58**, 268–273.
- 35 N. Cerca, G. B. Pier, M. Vilanova, R. Oliveira and J. Azeredo, *Res. Microbiol.*, 2005, **156**, 506–514.
- 36 C. J. Seneviratne, J. W. Yip, J. W. Chang, C. F. Zhang and L. P. Samaranyake, *Arch. Oral Biol.*, 2013, **58**, 1327–1334.
- 37 E. O'Neill, C. Pozzi, P. Houston, H. Humphreys, D. A. Robinson, A. Loughman, T. J. Foster and J. P. O'Gara, *J. Bacteriol.*, 2008, **190**, 3835–3850.
- 38 M. Vergara-Irigaray, J. Valle, N. Merino, C. Latasa, B. García, d. L. M. I. Ruiz, C. Solano, A. Toledo-Arana, J. R. Penadés and I. Lasa, *Infect. Immun.*, 2009, **77**, 3978–3991.
- 39 S. Hennig, N. W. Sun and W. Ziebuhr, *Int. J. Med. Microbiol.*, 2007, **297**, 117–122.



- 40 B. Diemondhernández, F. Solórzanosantos, B. Leñosmiranda, L. Peregrinobejarano and G. Mirandanovales, *BMC Infect. Dis.*, 2010, **10**, 30–33.
- 41 X. Wu, Y. Wang and L. Tao, *FEMS Microbiol. Lett.*, 2011, **316**, 44–50.
- 42 J. Valle, A. Toledo-Arana, C. Berasain, J. M. Ghigo, B. Amorena, J. R. Penadés and I. Lasa, *Mol. Microbiol.*, 2003, **48**, 1075–1087.
- 43 P. Vasseur, I. Vallet-Gely, C. Soscia, S. Genin and A. Filloux, *Microbiology*, 2005, **151**, 985–997.
- 44 Y. Sakuragi and R. Kolter, *J. Bacteriol.*, 2007, **189**, 5383–5386.
- 45 J. M. Yarwood and P. M. Schlievert, *J. Clin. Invest.*, 2003, **112**, 1620–1625.
- 46 W. R. J. D. Galloway, J. T. Hodgkinson, S. D. Bowden, M. Welch and D. R. Spring, *Chem. Rev.*, 2011, **111**, 28–67.
- 47 D. Balestrino, J. A. J. Haagenzen, C. Rich and C. Forestier, *J. Bacteriol.*, 2005, **187**, 2870–2880.
- 48 J. S. Dickschat, *Nat. Prod. Rep.*, 2010, **27**, 343–369.
- 49 M. R. Parsek and E. P. Greenberg, *Proc. Natl. Acad. Sci. U. S. A.*, 2000, **97**, 8789–8793.
- 50 M. J. Lynch, S. Swift, D. F. Kirke, C. W. Keevil, C. E. R. Dodd and P. Williams, *Environ. Microbiol.*, 2002, **4**, 18–28.
- 51 T. Abee, A. T. Kovács, O. P. Kuipers and d. V. S. Van, *Curr. Opin. Biotechnol.*, 2011, **22**, 172–179.
- 52 V. G. Lewis, M. P. Ween and C. A. Mcdevitt, *Protoplasma*, 2012, **249**, 919–942.
- 53 K. E. Beenken, P. M. Dunman, F. Mcaleese, D. Macapagal, E. Murphy, S. J. Projan, J. S. Blevins and M. S. Smeltzer, *J. Bacteriol.*, 2004, **186**, 4665–4684.
- 54 B. R. Boles and A. R. Horswill, *PLoS Pathog.*, 2008, **4**, 4191.
- 55 R. J. Worthington, J. J. Richards and C. Melander, *Org. Biomol. Chem.*, 2012, **10**, 7457–7474.
- 56 S. Guo, Y. Li, J. Chu, L. Wang, X. Zhao, N. Zhong, S. Qiu, J. Chen and Y. Li, *Afr. J. Biotechnol.*, 2011, **10**, 12847–12851.
- 57 X. H. Zhao, Y. M. Li, M. Park, J. Wang, Y. H. Zhang, X. W. He, F. Forghani, L. Wang, G. C. Yu and D. H. Oh, *J. Microbiol. Biotechnol.*, 2013, **23**, 246–250.
- 58 H. Ganin, X. Tang and M. M. Meijler, *Bioorg. Med. Chem. Lett.*, 2009, **19**, 3941–3944.
- 59 S. Auger, E. Krin, S. Aymerich and M. Gohar, *Appl. Environ. Microbiol.*, 2006, **72**, 937–941.
- 60 P. E. Kolenbrander, R. J. Palmer Jr, S. Periasamy and N. S. Jakobovics, *Nat. Rev. Microbiol.*, 2010, **8**, 471–480.
- 61 J. Y. Liu, R. Zhou, L. Li, B. M. Peters, B. Li, C. W. Lin, T. L. Chuang, D. Q. Chen, X. H. Zhao, Z. Y. Xiong, Z. B. Xu and M. E. Shirtliff, *Res. Microbiol.*, 2017, **168**, 188–193.
- 62 M. Janczarek, *Int. J. Mol. Sci.*, 2011, **12**, 7898–7933.
- 63 S. Lebeer, T. L. A. Verhoeven, M. P. Vlez, J. Vanderleyden and S. C. J. D. Keersmaecker, *Appl. Environ. Microbiol.*, 2007, **73**, 6768–6775.
- 64 T. Kawarai, S. Furukawa, N. Narisawa, C. Hagiwara, H. Ogihara and M. Yamasaki, *J. Biosci. Bioeng.*, 2009, **107**, 630–635.
- 65 N. Han, M. F. R. Mizan, I. K. Jahid and S. D. Ha, *Food Control*, 2016, **70**, 161–166.
- 66 H. T. Solheim, C. Sekse, A. M. Urdahl, Y. Wasteson and L. L. Nesse, *Appl. Environ. Microbiol.*, 2013, **79**, 896–900.
- 67 G. Reguera and R. Kolter, *J. Bacteriol.*, 2005, **187**, 3551–3555.
- 68 A. Hořtacká, I. Čiznár and M. Štefkovičová, *Folia Microbiol.*, 2010, **55**, 75–78.
- 69 H. D. Kusumaningrum, G. Riboldi, W. C. Hazeleger and R. R. Beumer, *Int. J. Food Microbiol.*, 2003, **85**, 227–236.
- 70 K. Ponnusamy, S. Kappachery, M. Thekeettle, J. H. Song and J. H. Kweon, *World J. Microbiol. Biotechnol.*, 2013, **29**, 1695–1703.
- 71 G. P. Zhao, Y. Q. Li, J. YanG and K. Y. Cui, *Czech J. Food Sci.*, 2016, **34**, 197–203.
- 72 Z. Lei, Z. Heyan, H. Tianyang and L. Siran, *Food Chem.*, 2015, **187**, 370–377.
- 73 M. K. Smith, L. A. Draper, P. J. Hazelhoff, P. D. Cotter, R. P. Ross and C. Hill, *Front. Microbiol.*, 2016, **7**, 1939.
- 74 P. J. Bremer, S. Fillery and A. J. Mcquillan, *Int. J. Food Microbiol.*, 2006, **106**, 254–262.
- 75 S. Furukawa, Y. Akiyoshi, M. Komoriya, H. Ogihara and Y. Morinaga, *Food Control*, 2010, **21**, 669–672.
- 76 H. Liu, X. Wei, J. Ling, W. Wang and X. Huang, *J. Endod.*, 2010, **36**, 630–635.
- 77 E. Presterl, M. Suchomel, M. Eder, S. Reichmann, A. Lassnigg, W. Graninger and M. Rotter, *J. Antimicrob. Chemother.*, 2007, **60**, 417–420.
- 78 K. C. Huth, M. Quirling, S. Maier, K. Kamereck, M. Alkhayer, E. Paschos, U. Welsch, T. Miethke, K. Brand and R. Hickel, *Int. Endod. J.*, 2009, **42**, 3–13.
- 79 N. G. Chorianopoulos, E. D. Giaouris, P. N. Skandamis, S. A. Haroutounian and G. J. E. Nychas, *J. Appl. Microbiol.*, 2008, **104**, 1586–1596.
- 80 N. L. Kavanaugh and K. Ribbeck, *Appl. Environ. Microbiol.*, 2012, **78**, 4057–4061.
- 81 X. H. Zhao, L. Wang, J. Chu, Y. M. Li, Y. Y. Li, Z. B. Xu, L. Li, M. E. Shirtliff, X. W. He, Y. Liu, J. H. Wang and L. S. Yang, *Food Sci. Biotechnol.*, 2010, **19**, 1655–1659.
- 82 Y. Chen, T. Liu, K. Wang, C. Hou, S. Cai, Y. Huang, Z. Du, H. Huang, J. Kong and Y. Chen, *PLoS One*, 2016, **11**, e0153468.
- 83 Z. C. Yang, B. C. Wang, X. S. Yang, Q. Wang and L. Ran, *Colloids Surf., B*, 2005, **41**, 79–81.
- 84 J. Zhang, X. Rui, L. Wang, Y. Guan, X. Sun and M. Dong, *Food Control*, 2014, **42**, 125–131.
- 85 L. D. Christensen, M. V. Gennip, T. H. Jakobsen, M. Alhede, H. P. Hougen, N. Høiby, T. Bjarnsholt and M. Givskov, *J. Antimicrob. Chemother.*, 2012, **67**, 1198–1206.
- 86 D. Bakkiyaraj, C. Sivasankar and S. K. Pandian, *Bioorg. Med. Chem. Lett.*, 2012, **22**, 3089–3094.
- 87 D. Vázquez-Sánchez, O. Habimana and A. Holck, *Curr. Microbiol.*, 2013, **66**, 110–121.
- 88 N. K. Palanisamy, N. Ferina, A. N. Amirulhusni, Z. Mohdzain, J. Hussaini, L. J. Ping and R. Durairaj, *J. Nanobiotechnol.*, 2014, **12**, 2–7.
- 89 D. Wu, W. Fan, A. Kishen, J. L. Gutmann and B. Fan, *J. Endod.*, 2014, **40**, 285–290.



- 90 M. Farhat, M. C. Trouilhé, E. Briand, M. Molettadenat, E. Robine and J. Frère, *J. Appl. Microbiol.*, 2010, **108**, 1073–1082.
- 91 X. H. Zhao, J. Wang, F. Forghani, J. H. Park, M. S. Park, K. H. Seo and D. H. Oh, *J. Microbiol. Biotechnol.*, 2013, **23**, 1708–1716.
- 92 T. Karosi, I. Sziklai and P. Csomor, *Laryngoscope*, 2013, **123**, 17–23.
- 93 N. He, J. Hu, H. Liu, T. Zhu, B. Huang, X. Wang, Y. Wu, W. Wang and D. Qu, *Antimicrob. Agents Chemother.*, 2011, **55**, 5331–5337.
- 94 R. A. N. Chmielewski and J. F. Frank, *Compr. Rev. Food Sci. Food Saf.*, 2003, **2**, 22–32.
- 95 J. B. Xavier, C. Picioreanu, S. A. Rani, M. C. van Loosdrecht and P. S. Stewart, *Microbiology*, 2005, **151**, 3817–3832.
- 96 J. S. Son, S. J. Lee, S. Y. Jun, S. J. Yoon, S. H. Kang, H. R. Paik, J. O. Kang and Y. J. Choi, *Appl. Microbiol. Biotechnol.*, 2010, **86**, 1439–1449.
- 97 X. H. Zhao, L. Wang, J. Chu, Y. Y. Li, Y. M. Li, Z. B. Xu, L. Li, M. E. Shirtliff, X. W. He, Y. Liu, J. H. Wang and L. S. Yang, *Food Sci. Biotechnol.*, 2010, **19**, 1191–1197.
- 98 I. Gilan and A. Sivan, *FEMS Microbiol. Lett.*, 2013, **342**, 18–23.
- 99 Z. B. Xu, L. Li, X. H. Zhao, J. Chu, B. Li, L. Shi, J. Y. Su and M. E. Shirtliff, *Afr. J. Biotechnol.*, 2011, **5**, 1869–1873.
- 100 M. R. Kiedrowski, J. S. Kavanaugh, C. L. Malone, J. M. Mootz, J. M. Voyich, M. S. Smeltzer, K. W. Bayles and A. R. Horswill, *PLoS One*, 2011, **6**, e26714.
- 101 A. M. Robinson, M. Bannister, J. E. Creeth and M. N. Jones, *Colloids Surf., A*, 2001, **186**, 43–53.
- 102 R. D. Harper, M. R. T. H. Parracho, J. Walker, R. Sharp and G. Hughes, *Antibiotics*, 2014, **3**, 270–284.
- 103 D. Kelly, O. McAuliffe, R. P. Ross and A. Coffey, *Lett. Appl. Microbiol.*, 2012, **54**, 286–291.
- 104 C. Anneleen, C. Pieter-Jan, T. S. Jeroen, V. P. Helena, N. Jean-Paul, O. V. Shaburova, V. N. Krylov, V. Guido and L. Rob, *PLoS One*, 2011, **6**, e18597.
- 105 W. Fu, T. Forster, O. Mayer, J. J. Curtin, S. M. Lehman and R. M. Donlan, *Antimicrob. Agents Chemother.*, 2010, **54**, 397–404.
- 106 L. Carson, S. P. Gorman, B. F. Gilmore, G. Donelli, R. Bayston, W. B. Costerton and M. E. Shirtliff, *FEMS Immunol. Med. Microbiol.*, 2010, **59**, 447–455.
- 107 M. Corcoran, D. Morris, N. De Lappe, J. O'Connor, P. Lalor, P. Dockery and M. Cormican, *Appl. Environ. Microbiol.*, 2014, **80**, 1507–1514.
- 108 U. T. Nguyen and L. L. Burrows, *Int. J. Food Microbiol.*, 2014, **187**, 26–32.
- 109 L. B. Coulter, R. J. C. Mclean, R. E. Rohde and G. M. Aron, *Viruses*, 2014, **6**, 3778–3786.
- 110 Y. Zhang and Z. Hu, *Biotechnol. Bioeng.*, 2013, **110**, 286–295.
- 111 O. E. Petrova and K. Sauer, *Proc. Natl. Acad. Sci. U. S. A.*, 2012, **109**, 16690–16695.
- 112 D. G. Davies and C. N. Marques, *J. Bacteriol.*, 2009, **191**, 1393–1403.
- 113 L. R. Marks, B. A. Davidson, P. R. Knight and A. P. Hakansson, *mBio*, 2013, **4**, e00438.
- 114 R. A. N. Chmielewski and J. F. Frank, *Compr. Rev. Food Sci. Food Saf.*, 2010, **2**, 22–32.
- 115 M. Simões, L. C. Simões and M. J. Vieira, *LWT-Food Sci. Technol.*, 2010, **43**, 573–583.
- 116 A. Bridier, P. Sanchez-Vizueté, M. Guilbaud, J. C. Piard, M. Naïtali and R. Briandet, *Food Microbiol.*, 2015, **45**, 167–178.
- 117 S. Srey, I. K. Jahid and S. D. Ha, *Food Control*, 2013, **31**, 572–585.

