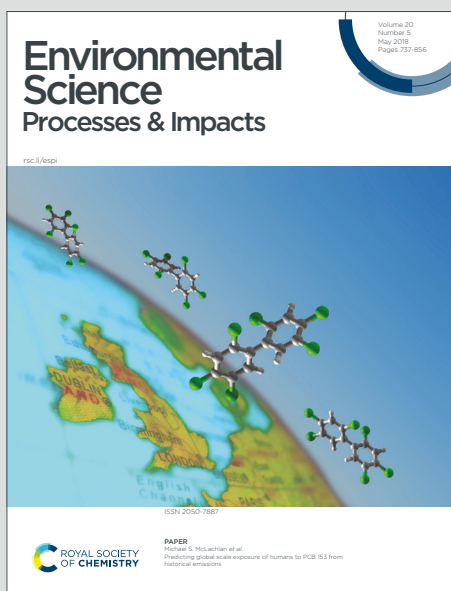


# Environmental Science Processes & Impacts

Accepted Manuscript

This article can be cited before page numbers have been issued, to do this please use: K. Wilschnack, E. Cartmell, K. Yates and B. Petrie, *Environ. Sci.: Processes Impacts*, 2026, DOI: 10.1039/D5EM00568J.



This is an Accepted Manuscript, which has been through the Royal Society of Chemistry peer review process and has been accepted for publication.

Accepted Manuscripts are published online shortly after acceptance, before technical editing, formatting and proof reading. Using this free service, authors can make their results available to the community, in citable form, before we publish the edited article. We will replace this Accepted Manuscript with the edited and formatted Advance Article as soon as it is available.

You can find more information about Accepted Manuscripts in the [Information for Authors](#).

Please note that technical editing may introduce minor changes to the text and/or graphics, which may alter content. The journal's standard [Terms & Conditions](#) and the [Ethical guidelines](#) still apply. In no event shall the Royal Society of Chemistry be held responsible for any errors or omissions in this Accepted Manuscript or any consequences arising from the use of any information it contains.

## Environmental Significance Statement

View Article Online  
DOI: 10.1039/D5EM00568J

Septic tanks (STs) are an important, but often overlooked, pathway for active pharmaceutical ingredients (APIs) entering the environment. API concentrations in aquatic environments impacted by STs can exceed their predicted no-effect concentrations. This highlights the need to consider the influence and management of STs in the protection of aquatic ecosystems.

1  
2  
3  
4  
5  
6  
7  
8  
9  
10  
11  
12  
13  
14  
15  
16  
17  
18  
19  
20  
21  
22  
23  
24  
25  
26  
27  
28  
29  
30  
31  
32  
33  
34  
35  
36  
37  
38  
39  
40  
41  
42  
43  
44  
45  
46  
47  
48  
49  
50  
51  
52  
53  
54  
55  
56  
57  
58  
59  
60

Downloaded on 02/05/2026 12:41:13.  
This article is licensed under a Creative Commons Attribution 3.0 Unported Licence.



Environmental Science: Processes & Impacts Accepted Manuscript

# A critical review of septic tanks as a pathway for active pharmaceutical ingredients to the aquatic environment – existing knowledge and future perspectives on their monitoring and management

View Article Online  
DOI: 10.1039/D5EM00568J

Kai Wilschnack<sup>a</sup>, Elise Cartmell<sup>b</sup>, Kyari Yates<sup>a</sup>, Bruce Petrie<sup>a,\*</sup>

<sup>a</sup> School of Pharmacy, Applied Sciences and Public Health, Robert Gordon University, Aberdeen, AB10 7GJ, UK

<sup>b</sup> Scottish Water, 55 Buckstone Terrace, Edinburgh EH10 6XH, UK

\* Corresponding Author. E-mail: [b.r.petrie@rgu.ac.uk](mailto:b.r.petrie@rgu.ac.uk). Tel: +44 (0)1224 262824

## Abstract

Active pharmaceutical ingredients (APIs) are present in aquatic environments at concentrations that can impact ecosystems. Their major pathway to the environment is in the discharge of wastewater effluents from centralised wastewater treatment works (WWTWs). However, in most rural areas where houses are not connected to a public sewage network, single households or groups of houses rely on onsite wastewater treatment works (OWTWs), mainly septic tanks (STs). Therefore, STs are reviewed as a pathway for APIs to the aquatic environment. Despite STs being extensively used globally, there is a geographical bias in available data with most studies conducted in the USA. Furthermore, studies focus on a few APIs (e.g., carbamazepine, sulfamethoxazole and paracetamol) and the impact of STs to groundwater. Previous reliance on grab sampling and the heterogenous composition of influent wastewater characterised by the small contributing populations makes assessing ST removal efficiency challenging. Available data suggests little or no removal of APIs in the anaerobic environment of STs. Conducting an intensive monitoring approach (e.g., continuous 24-h composite sampling) for durations several times the ST hydraulic retention time will help benchmark their performance for API removal against other processes. Recent studies show surface waters receiving ST discharges have API concentrations exceeding their predicted no effect concentration (PNEC, the concentration below

which no adverse effect is expected). Mean concentrations of 17 $\beta$ -estradiol, ampicillin, ibuprofen, memantine, palmitamid, paracetamol and trihexyphenidyl all exceeded their PNEC by up to 50 times. However, there is a lack of data for several APIs identified to be of possible environmental concern in prioritisation watch lists such as those outlined by the EU (e.g., amoxicillin, clarithromycin, desmethylvenlafaxine and clindamycin). Receiving surface waters can be small ecologically important streams, demanding the need for further monitoring and intervention. Other than adopting secondary treatment (e.g., constructed wetlands where possible) or alternative OWTWs which achieve greater API removal, sustainable medicine use is proposed as a viable means of reducing the environmental impact of ST discharges where risks are identified. Utilising environmentally informed prescribing and other 'upstream' interventions such as return schemes for unused pharmaceuticals, have great potential for success where small populations of people can be specifically targeted.

**Keywords:** Septic tank, onsite wastewater treatment, wastewater, river, groundwater, pharmaceutical, emerging contaminant

## 1 Introduction

Pharmaceuticals are critical for improving public health through the prevention, management, and treatment of various diseases.<sup>1</sup> However, they are also widely recognised for their potential ecotoxicological risk to the environment,<sup>2-5</sup> and are present in water bodies worldwide at ng to  $\mu\text{g L}^{-1}$  concentrations.<sup>6-11</sup> Adverse effects have been observed at concentrations relevant to the aquatic environment. For example, long-term exposure to fluoxetine ( $3 \cdot 10^{-3} - 0.3 \mu\text{g L}^{-1}$ ) reduces growth and reproductive potential in *Mytilus californianus* mussels.<sup>12</sup> Active pharmaceutical ingredients (APIs) can induce their designed effects on non-target organisms. For instance, the swimming activity of *Danio rerio* (zebrafish) embryos is reduced in the presence of  $\beta$ -blockers due to the decreasing heart rate, and thus decreasing swim bladder inflation.<sup>13</sup> They can also induce non-designed effects in

1  
2  
3 the environment. Hormones cause endocrine disrupting effects, such as  
4 View Article Online  
5 DOI: 10.1039/D5EM00568J  
6 feminisation, e.g., as observed in *Rutilus rutilus* (roach) after early life exposure to 3  
7 · 10<sup>-3</sup> µg L<sup>-1</sup> of the hormonal contraceptive agent 17α-ethinylestradiol.<sup>14</sup>  
8  
9 Furthermore, persistent exposure to antibiotics can promote antimicrobial  
10 resistance genes (ARGs).<sup>15</sup> The presence of APIs in complex mixtures in the  
11 environment can also result in synergistic or antagonistic effects.<sup>3,16,17</sup> The  
12 ecotoxicological risk to the environment of individual APIs can be described using  
13 the predicted no effect concentration (PNEC), the concentration below which no  
14 adverse effects are expected.<sup>18</sup>

15  
16  
17  
18  
19  
20  
21  
22  
23  
24  
25  
26  
27  
28  
29  
30  
31  
32  
33  
34  
35  
36  
37  
38  
39  
40  
41  
42  
43  
44  
45  
46  
47  
48  
49  
50  
51  
52  
53  
54  
55  
56  
57  
58  
59  
60  
61  
62  
63  
64  
65  
66  
67  
68  
69  
70  
71  
72  
73  
74  
75  
76  
77  
78  
79  
80  
81  
82  
83  
84  
85  
86  
87  
88  
89  
90  
91  
92  
93  
94  
95  
96  
97  
98  
99  
100  
101  
102  
103  
104  
105  
106  
107  
108  
109  
110  
111  
112  
113  
114  
115  
116  
117  
118  
119  
120  
121  
122  
123  
124  
125  
126  
127  
128  
129  
130  
131  
132  
133  
134  
135  
136  
137  
138  
139  
140  
141  
142  
143  
144  
145  
146  
147  
148  
149  
150  
151  
152  
153  
154  
155  
156  
157  
158  
159  
160  
161  
162  
163  
164  
165  
166  
167  
168  
169  
170  
171  
172  
173  
174  
175  
176  
177  
178  
179  
180  
181  
182  
183  
184  
185  
186  
187  
188  
189  
190  
191  
192  
193  
194  
195  
196  
197  
198  
199  
200  
201  
202  
203  
204  
205  
206  
207  
208  
209  
210  
211  
212  
213  
214  
215  
216  
217  
218  
219  
220  
221  
222  
223  
224  
225  
226  
227  
228  
229  
230  
231  
232  
233  
234  
235  
236  
237  
238  
239  
240  
241  
242  
243  
244  
245  
246  
247  
248  
249  
250  
251  
252  
253  
254  
255  
256  
257  
258  
259  
260  
261  
262  
263  
264  
265  
266  
267  
268  
269  
270  
271  
272  
273  
274  
275  
276  
277  
278  
279  
280  
281  
282  
283  
284  
285  
286  
287  
288  
289  
290  
291  
292  
293  
294  
295  
296  
297  
298  
299  
300  
301  
302  
303  
304  
305  
306  
307  
308  
309  
310  
311  
312  
313  
314  
315  
316  
317  
318  
319  
320  
321  
322  
323  
324  
325  
326  
327  
328  
329  
330  
331  
332  
333  
334  
335  
336  
337  
338  
339  
340  
341  
342  
343  
344  
345  
346  
347  
348  
349  
350  
351  
352  
353  
354  
355  
356  
357  
358  
359  
360  
361  
362  
363  
364  
365  
366  
367  
368  
369  
370  
371  
372  
373  
374  
375  
376  
377  
378  
379  
380  
381  
382  
383  
384  
385  
386  
387  
388  
389  
390  
391  
392  
393  
394  
395  
396  
397  
398  
399  
400  
401  
402  
403  
404  
405  
406  
407  
408  
409  
410  
411  
412  
413  
414  
415  
416  
417  
418  
419  
420  
421  
422  
423  
424  
425  
426  
427  
428  
429  
430  
431  
432  
433  
434  
435  
436  
437  
438  
439  
440  
441  
442  
443  
444  
445  
446  
447  
448  
449  
450  
451  
452  
453  
454  
455  
456  
457  
458  
459  
460  
461  
462  
463  
464  
465  
466  
467  
468  
469  
470  
471  
472  
473  
474  
475  
476  
477  
478  
479  
480  
481  
482  
483  
484  
485  
486  
487  
488  
489  
490  
491  
492  
493  
494  
495  
496  
497  
498  
499  
500  
501  
502  
503  
504  
505  
506  
507  
508  
509  
510  
511  
512  
513  
514  
515  
516  
517  
518  
519  
520  
521  
522  
523  
524  
525  
526  
527  
528  
529  
530  
531  
532  
533  
534  
535  
536  
537  
538  
539  
540  
541  
542  
543  
544  
545  
546  
547  
548  
549  
550  
551  
552  
553  
554  
555  
556  
557  
558  
559  
560  
561  
562  
563  
564  
565  
566  
567  
568  
569  
570  
571  
572  
573  
574  
575  
576  
577  
578  
579  
580  
581  
582  
583  
584  
585  
586  
587  
588  
589  
590  
591  
592  
593  
594  
595  
596  
597  
598  
599  
600  
601  
602  
603  
604  
605  
606  
607  
608  
609  
610  
611  
612  
613  
614  
615  
616  
617  
618  
619  
620  
621  
622  
623  
624  
625  
626  
627  
628  
629  
630  
631  
632  
633  
634  
635  
636  
637  
638  
639  
640  
641  
642  
643  
644  
645  
646  
647  
648  
649  
650  
651  
652  
653  
654  
655  
656  
657  
658  
659  
660  
661  
662  
663  
664  
665  
666  
667  
668  
669  
670  
671  
672  
673  
674  
675  
676  
677  
678  
679  
680  
681  
682  
683  
684  
685  
686  
687  
688  
689  
690  
691  
692  
693  
694  
695  
696  
697  
698  
699  
700  
701  
702  
703  
704  
705  
706  
707  
708  
709  
710  
711  
712  
713  
714  
715  
716  
717  
718  
719  
720  
721  
722  
723  
724  
725  
726  
727  
728  
729  
730  
731  
732  
733  
734  
735  
736  
737  
738  
739  
740  
741  
742  
743  
744  
745  
746  
747  
748  
749  
750  
751  
752  
753  
754  
755  
756  
757  
758  
759  
760  
761  
762  
763  
764  
765  
766  
767  
768  
769  
770  
771  
772  
773  
774  
775  
776  
777  
778  
779  
780  
781  
782  
783  
784  
785  
786  
787  
788  
789  
790  
791  
792  
793  
794  
795  
796  
797  
798  
799  
800  
801  
802  
803  
804  
805  
806  
807  
808  
809  
810  
811  
812  
813  
814  
815  
816  
817  
818  
819  
820  
821  
822  
823  
824  
825  
826  
827  
828  
829  
830  
831  
832  
833  
834  
835  
836  
837  
838  
839  
840  
841  
842  
843  
844  
845  
846  
847  
848  
849  
850  
851  
852  
853  
854  
855  
856  
857  
858  
859  
860  
861  
862  
863  
864  
865  
866  
867  
868  
869  
870  
871  
872  
873  
874  
875  
876  
877  
878  
879  
880  
881  
882  
883  
884  
885  
886  
887  
888  
889  
890  
891  
892  
893  
894  
895  
896  
897  
898  
899  
900  
901  
902  
903  
904  
905  
906  
907  
908  
909  
910  
911  
912  
913  
914  
915  
916  
917  
918  
919  
920  
921  
922  
923  
924  
925  
926  
927  
928  
929  
930  
931  
932  
933  
934  
935  
936  
937  
938  
939  
940  
941  
942  
943  
944  
945  
946  
947  
948  
949  
950  
951  
952  
953  
954  
955  
956  
957  
958  
959  
960  
961  
962  
963  
964  
965  
966  
967  
968  
969  
970  
971  
972  
973  
974  
975  
976  
977  
978  
979  
980  
981  
982  
983  
984  
985  
986  
987  
988  
989  
990  
991  
992  
993  
994  
995  
996  
997  
998  
999  
1000  
1001  
1002  
1003  
1004  
1005  
1006  
1007  
1008  
1009  
1010  
1011  
1012  
1013  
1014  
1015  
1016  
1017  
1018  
1019  
1020  
1021  
1022  
1023  
1024  
1025  
1026  
1027  
1028  
1029  
1030  
1031  
1032  
1033  
1034  
1035  
1036  
1037  
1038  
1039  
1040  
1041  
1042  
1043  
1044  
1045  
1046  
1047  
1048  
1049  
1050  
1051  
1052  
1053  
1054  
1055  
1056  
1057  
1058  
1059  
1060  
1061  
1062  
1063  
1064  
1065  
1066  
1067  
1068  
1069  
1070  
1071  
1072  
1073  
1074  
1075  
1076  
1077  
1078  
1079  
1080  
1081  
1082  
1083  
1084  
1085  
1086  
1087  
1088  
1089  
1090  
1091  
1092  
1093  
1094  
1095  
1096  
1097  
1098  
1099  
1100  
1101  
1102  
1103  
1104  
1105  
1106  
1107  
1108  
1109  
1110  
1111  
1112  
1113  
1114  
1115  
1116  
1117  
1118  
1119  
1120  
1121  
1122  
1123  
1124  
1125  
1126  
1127  
1128  
1129  
1130  
1131  
1132  
1133  
1134  
1135  
1136  
1137  
1138  
1139  
1140  
1141  
1142  
1143  
1144  
1145  
1146  
1147  
1148  
1149  
1150  
1151  
1152  
1153  
1154  
1155  
1156  
1157  
1158  
1159  
1160  
1161  
1162  
1163  
1164  
1165  
1166  
1167  
1168  
1169  
1170  
1171  
1172  
1173  
1174  
1175  
1176  
1177  
1178  
1179  
1180  
1181  
1182  
1183  
1184  
1185  
1186  
1187  
1188  
1189  
1190  
1191  
1192  
1193  
1194  
1195  
1196  
1197  
1198  
1199  
1200  
1201  
1202  
1203  
1204  
1205  
1206  
1207  
1208  
1209  
1210  
1211  
1212  
1213  
1214  
1215  
1216  
1217  
1218  
1219  
1220  
1221  
1222  
1223  
1224  
1225  
1226  
1227  
1228  
1229  
1230  
1231  
1232  
1233  
1234  
1235  
1236  
1237  
1238  
1239  
1240  
1241  
1242  
1243  
1244  
1245  
1246  
1247  
1248  
1249  
1250  
1251  
1252  
1253  
1254  
1255  
1256  
1257  
1258  
1259  
1260  
1261  
1262  
1263  
1264  
1265  
1266  
1267  
1268  
1269  
1270  
1271  
1272  
1273  
1274  
1275  
1276  
1277  
1278  
1279  
1280  
1281  
1282  
1283  
1284  
1285  
1286  
1287  
1288  
1289  
1290  
1291  
1292  
1293  
1294  
1295  
1296  
1297  
1298  
1299  
1300  
1301  
1302  
1303  
1304  
1305  
1306  
1307  
1308  
1309  
1310  
1311  
1312  
1313  
1314  
1315  
1316  
1317  
1318  
1319  
1320  
1321  
1322  
1323  
1324  
1325  
1326  
1327  
1328  
1329  
1330  
1331  
1332  
1333  
1334  
1335  
1336  
1337  
1338  
1339  
1340  
1341  
1342  
1343  
1344  
1345  
1346  
1347  
1348  
1349  
1350  
1351  
1352  
1353  
1354  
1355  
1356  
1357  
1358  
1359  
1360  
1361  
1362  
1363  
1364  
1365  
1366  
1367  
1368  
1369  
1370  
1371  
1372  
1373  
1374  
1375  
1376  
1377  
1378  
1379  
1380  
1381  
1382  
1383  
1384  
1385  
1386  
1387  
1388  
1389  
1390  
1391  
1392  
1393  
1394  
1395  
1396  
1397  
1398  
1399  
1400  
1401  
1402  
1403  
1404  
1405  
1406  
1407  
1408  
1409  
1410  
1411  
1412  
1413  
1414  
1415  
1416  
1417  
1418  
1419  
1420  
1421  
1422  
1423  
1424  
1425  
1426  
1427  
1428  
1429  
1430  
1431  
1432  
1433  
1434  
1435  
1436  
1437  
1438  
1439  
1440  
1441  
1442  
1443  
1444  
1445  
1446  
1447  
1448  
1449  
1450  
1451  
1452  
1453  
1454  
1455  
1456  
1457  
1458  
1459  
1460  
1461  
1462  
1463  
1464  
1465  
1466  
1467  
1468  
1469  
1470  
1471  
1472  
1473  
1474  
1475  
1476  
1477  
1478  
1479  
1480  
1481  
1482  
1483  
1484  
1485  
1486  
1487  
1488  
1489  
1490  
1491  
1492  
1493  
1494  
1495  
1496  
1497  
1498  
1499  
1500  
1501  
1502  
1503  
1504  
1505  
1506  
1507  
1508  
1509  
1510  
1511  
1512  
1513  
1514  
1515  
1516  
1517  
1518  
1519  
1520  
1521  
1522  
1523  
1524  
1525  
1526  
1527  
1528  
1529  
1530  
1531  
1532  
1533  
1534  
1535  
1536  
1537  
1538  
1539  
1540  
1541  
1542  
1543  
1544  
1545  
1546  
1547  
1548  
1549  
1550  
1551  
1552  
1553  
1554  
1555  
1556  
1557  
1558  
1559  
1560  
1561  
1562  
1563  
1564  
1565  
1566  
1567  
1568  
1569  
1570  
1571  
1572  
1573  
1574  
1575  
1576  
1577  
1578  
1579  
1580  
1581  
1582  
1583  
1584  
1585  
1586  
1587  
1588  
1589  
1590  
1591  
1592  
1593  
1594  
1595  
1596  
1597  
1598  
1599  
1600  
1601  
1602  
1603  
1604  
1605  
1606  
1607  
1608  
1609  
1610  
1611  
1612  
1613  
1614  
1615  
1616  
1617  
1618  
1619  
1620  
1621  
1622  
1623  
1624  
1625  
1626  
1627  
1628  
1629  
1630  
1631  
1632  
1633  
1634  
1635  
1636  
1637  
1638  
1639  
1640  
1641  
1642  
1643  
1644  
1645  
1646  
1647  
1648  
1649  
1650  
1651  
1652  
1653  
1654  
1655  
1656  
1657  
1658  
1659  
1660  
1661  
1662  
1663  
1664  
1665  
1666  
1667  
1668  
1669  
1670  
1671  
1672  
1673  
1674  
1675  
1676  
1677  
1678  
1679  
1680  
1681  
1682  
1683  
1684  
1685  
1686  
1687  
1688  
1689  
1690  
1691  
1692  
1693  
1694  
1695  
1696  
1697  
1698  
1699  
1700  
1701  
1702  
1703  
1704  
1705  
1706  
1707  
1708  
1709  
1710  
1711  
1712  
1713  
1714  
1715  
1716  
1717  
1718  
1719  
1720  
1721  
1722  
1723  
1724  
1725  
1726  
1727  
1728  
1729  
1730  
1731  
1732  
1733  
1734  
1735  
1736  
1737  
1738  
1739  
1740  
1741  
1742  
1743  
1744  
1745  
1746  
1747  
1748  
1749  
1750  
1751  
1752  
1753  
1754  
1755  
1756  
1757  
1758  
1759  
1760  
1761  
1762  
1763  
1764  
1765  
1766  
1767  
1768  
1769  
1770  
1771  
1772  
1773  
1774  
1775  
1776  
1777  
1778  
1779  
1780  
1781  
1782  
1783  
1784  
1785  
1786  
1787  
1788  
1789  
1790  
1791  
1792  
1793  
1794  
1795  
1796  
1797  
1798  
1799  
1800  
1801  
1802  
1803  
1804  
1805  
1806  
1807  
1808  
1809  
1810  
1811  
1812  
1813  
1814  
1815  
1816  
1817  
1818  
1819  
1820  
1821  
1822  
1823  
1824  
1825  
1826  
1827  
1828  
1829  
1830  
1831  
1832  
1833  
1834  
1835  
1836  
1837  
1838  
1839  
1840  
1841  
1842  
1843  
1844  
1845  
1846  
1847  
1848  
1849  
1850  
1851  
1852  
1853  
1854  
1855  
1856  
1857  
1858  
1859  
1860  
1861  
1862  
1863  
1864  
1865  
1866  
1867  
1868  
1869  
1870  
1871  
1872  
1873  
1874  
1875  
1876  
1877  
1878  
1879  
1880  
1881  
1882  
1883  
1884  
1885  
1886  
1887  
1888  
1889  
1890  
1891  
1892  
1893  
1894  
1895  
1896  
1897  
1898  
1899  
1900  
1901  
1902  
1903  
1904  
1905  
1906  
1907  
1908  
1909  
1910  
1911  
1912  
1913  
1914  
1915  
1916  
1917  
1918  
1919  
1920  
1921  
1922  
1923  
1924  
1925  
1926  
1927  
1928  
1929  
1930  
1931  
1932  
1933  
1934  
1935  
1936  
1937  
1938  
1939  
1940  
1941  
1942  
1943  
1944  
1945  
1946  
1947  
1948  
1949  
1950  
1951  
1952  
1953  
1954  
1955  
1956  
1957  
1958  
1959  
1960  
1961  
1962  
1963  
1964  
1965  
1966  
1967  
1968  
1969  
1970  
1971  
1972  
1973  
1974  
1975  
1976  
1977  
1978  
1979  
1980  
1981  
1982  
1983  
1984  
1985  
1986  
1987  
1988  
1989  
1990  
1991  
1992  
1993  
1994  
1995  
1996  
1997  
1998  
1999  
2000  
2001  
2002  
2003  
2004  
2005  
2006  
2007  
2008  
2009  
2010  
2011  
2012  
2013  
2014  
2015  
2016  
2017  
2018  
2019  
2020  
2021  
2022  
2023  
2024  
2025  
2026  
2027  
2028  
2029  
2030  
2031  
2032  
2033  
2034  
2035  
2036  
2037  
2038  
2039  
2040  
2041  
2042  
2043  
2044  
2045  
2046  
2047  
2048  
2049  
2050  
2051  
2052  
2053  
2054  
2055  
2056  
2057  
2058  
2059  
2060  
2061  
2062  
2063  
2064  
2065  
2066  
2067  
2068  
2069  
2070  
2071  
2072  
2073  
2074  
2075  
2076  
2077  
2078  
2079  
2080  
2081  
2082  
2083  
2084  
2085  
2086  
2087  
2088  
2089  
2090  
2091  
2092  
2093  
2094  
2095  
2096  
2097  
2098  
2099  
2100  
2101  
2102  
2103  
2104  
2105  
2106  
2107  
2108  
2109  
2110  
2111  
2112  
2113  
2114  
2115  
2116  
2117  
2118  
2119  
2120  
2121  
2122  
2123  
2124  
2125  
2126  
2127  
2128  
2129  
2130  
2131  
2132  
2133  
2134  
2135  
2136  
2137  
2138  
2139  
2140  
2141  
2142  
2143  
2144  
2145  
2146  
2147  
2148  
2149  
2150  
2151  
2152  
2153  
2154  
2155  
2156  
2157  
2158  
2159  
2160  
2161  
2162  
2163  
2164  
2165  
2166  
2167  
2168  
2169  
2170  
2171  
2172  
2173  
2174  
2175  
2176  
2177  
2178  
2179  
2180  
2181  
2182  
2183  
2184  
2185  
2186  
2187  
2188  
2189  
2190  
2191  
2192

(EF), calculated from the enantiomer concentrations.<sup>32</sup> Pairs of enantiomers can demonstrate enantioselectivity in their environmental occurrence, fate, and toxicity.<sup>32–35</sup>

Possible pathways of APIs, including unchanged pharmaceuticals, and wastewater and human metabolites, to the environment include treated effluents from municipal, hospital, and industrial WWTWs, untreated wastewater discharges, e.g., through combined sewage overflows (CSOs), surface water runoff from urban and agricultural areas, aquaculture and landfill leachate.<sup>28,36–40</sup> Due to the ubiquitous presence of APIs in municipal influent wastewater, their incomplete removal in conventional wastewater treatment, the continuous discharge of treated effluent, and their use by the majority of the population, they are considered pseudo-persistent in the environment with centralised WWTWs identified as the main pathway of APIs to the environment.<sup>28,36,41,42</sup> Hence, research efforts have been directed toward these centralised WWTWs and their receiving surface waters.<sup>6,36,43–45</sup> One pathway that has received comparatively little attention are onsite WWTWs (OWTWs), e.g., septic tanks (STs), that treat wastewater of single households or small communities in mostly rural areas.<sup>46,47</sup>

## 2 Septic tanks for wastewater treatment

Wastewater can be treated in centralised WWTWs or close to the source in decentralised OWTWs. OWTWs are especially common in rural areas due to the high costs of building and operating centralised WWTWs and pipe networks in low-density population areas.<sup>46,47</sup> However, historically OWTWs were also used in more urban areas, some of which still remain, e.g., there are 603 STs in Edinburgh, the second largest city in Scotland, of which only some are located in the outskirts of the city.<sup>48</sup> Onsite treatment options include packaged treatment plants and settlement systems, such as STs, possibly followed by further treatment steps.<sup>49</sup> Alternatively, wastewater is stored in a watertight cesspit (cesspool) and regularly removed to be treated at a centralised facility.<sup>50</sup> The principle of STs for wastewater treatment was proposed in

1  
2  
3 1860, in France, by Mouras and Moigno, and is widely used since their introduction  
4 to England in 1895.<sup>51</sup> A ST is a watertight underground tank with an inlet and outlet  
5 pipe.<sup>52</sup> Wastewater is treated by the separation of the liquid phase from heavy solids  
6 that settle as sludge at the bottom of the tank, and oil, grease and low density solids  
7 that build a top layer called scum.<sup>52</sup> The organic matter is partially degraded by  
8 anaerobic microorganisms.<sup>49</sup> However, there is a build-up of sludge and scum within  
9 the ST which needs removed, typically every few months to years.<sup>51</sup> The removed  
10 material is then further treated at centralised WWTWs.<sup>53</sup> STs are designed as a  
11 rectangular chamber made of bricks, concrete, or as glass-reinforced plastic (GRP)  
12 with one or more compartments in series (Figure 1a) or as GRP torpedo (onion-  
13 shaped) STs (Figure 1b). Generally, the performance of rectangular STs increases  
14 with increasing number of compartments.<sup>51,54</sup> Rectangular STs with multiple  
15 compartments are also known as baffled reactors.<sup>55</sup>

16  
17  
18  
19  
20  
21  
22  
23  
24  
25  
26  
27  
28  
29  
30  
31  
32  
33  
34  
35  
36  
37  
38  
39  
40  
41  
42  
43  
44  
45  
46  
47  
48  
49  
50  
51  
52  
53  
54  
55  
56  
57  
58  
59  
60

The ST effluent may undergo further treatment before being discharged into the ground or a nearby water body, e.g., through infiltration fields or natural systems.<sup>52,55,56</sup> In an infiltration field (also referred to as soil infiltration system, drainfield, drainage field, leach field, soil absorption system or soil treatment unit), ST effluent is distributed into perforated pipes and spread into the soil, often after filtration through stone or gravel.<sup>49,57</sup> Infiltration fields, unlike soakaways where ST effluent is discharged to the ground via a single pipe, are considered additional secondary treatment via sorption and anaerobic biodegradation.<sup>56</sup> Deep, permeable soils and sufficient space, e.g., to allow sufficient distance from portable water sources, are required for their successful use.<sup>47,51,58</sup> Alternative further treatments are mound filters, constructed wetlands, packaged filters, reed beds and packaged treatment plants.<sup>49,55,56,59</sup> Packaged treatment plants, such as activated sludge systems, submerged aerated filters, rotating biological contactors, sequencing batch reactors and biological filters, use aerobic processes and are used as secondary treatment units.<sup>55,56,60-62</sup>

Regulations on STs and how commonly STs are used vary widely between different countries. For instance, it is estimated that 3% of households in Germany, and 33% of households in Ireland use private OWTWs; traditionally a ST.<sup>52,63</sup> Regulatory differences exist even between geographically and politically similar countries, e.g., different regulations on the registration process and discharges apply in the UK for England and Wales, Northern Ireland, and Scotland.<sup>64</sup> STs serve single houses or small communities (sometimes referred to as cluster STs) and can be publicly or privately owned.<sup>65-67</sup> While the majority of STs in the USA discharge to the ground, the direct discharge of ST effluent to rivers, lakes or coastal waters is also possible, and is commonplace in other countries.<sup>68,69</sup>

Regulations depend on the type of treatment, distance from a public sewer, the size of the contributing population and the nature of the receiving environment.

Typically, existing STs and those receiving only domestic wastewater, are less strictly regulated than newly installed systems and those receiving other than just domestic inputs.<sup>68,70</sup> For example, trade effluent, such as water used in production, washing, or cooling facilities and businesses, including laundrettes and car washes, cannot be treated in STs in Scotland.<sup>68,71</sup> STs have received increasing attention by regulators in recent years, and stricter rules have been introduced. For instance, STs discharging to a watercourse were to be replaced or upgraded to a packaged treatment plant before January 2020 in England unless an exemption is given by the Environment Agency.<sup>64</sup>

Typical problems associated with STs are however often related to systems not working as intended or not being compliant with existing regulations. For example, Yates et al.<sup>72</sup> found that in one catchment in England only 15% of STs had the required permit. This could not only lead to significantly underestimating the number of ST discharges, but also increases the risk of performance related issues<sup>72,73</sup> including incorrect maintenance, defective design or malfunctioning, e.g., caused by blockages.<sup>51,52,74</sup> For instance, 45% of participants reported a blockage

1  
2  
3 or overflowing of their ST in a catchment survey in 2012.<sup>75</sup> When STs are not  
4 frequently emptied, sludge and scum accumulate in the tank, which reduces the  
5 tank volume and thereby the hydraulic retention time (HRT). The HRT is an  
6 important factor in the tank performance,<sup>65</sup> as it controls the time for separation of  
7 sludge and scum from the wastewater and biodegradation, and thereby the extent  
8 and efficiency of the treatment process. STs that were never emptied or last  
9 emptied over 15 years ago are still in use.<sup>52,75-78</sup> Existing historic STs, built before  
10 current regulations, have increased risk of performance related issues as older STs  
11 are associated with out-dated design standards. Examples of out-dated designs  
12 include undersized tanks, misconnected pipes, STs made of brick, as they are more  
13 likely to leak into the ground, or unsuitable infiltration fields or discharge points.<sup>48,51</sup>  
14 When effluent pipes are too short or damaged, ST discharges do not reach the  
15 receiving watercourse, particularly during low flow conditions of the  
16 watercourse.<sup>48,52</sup> Even for registered STs, further information relevant to determine  
17 the possible impact to the environment, e.g., the number of contributing population  
18 equivalents (PE), size and age of the ST, treatment type, desludging frequency and  
19 discharge point, are often missing.<sup>48,78</sup>

20  
21  
22  
23  
24  
25  
26  
27  
28  
29  
30  
31  
32  
33  
34  
35  
36  
37  
38  
39  
40  
41  
42  
43  
44  
45  
46  
47  
48  
49  
50  
51  
52  
53  
54  
55  
56  
57  
58  
59  
60

There are four existing literature reviews on organic contaminants in OWTWs.<sup>49,79-81</sup>  
A recent review on the impact of STs on groundwater contamination also mentions  
organic contaminants including APIs.<sup>82</sup> Sharma et al.<sup>80</sup> reviewed the treatment of  
hospital effluent for antimicrobial removal in advanced onsite wastewater  
treatment. However, STs treat wastewater to a lesser degree than secondary and  
tertiary (advanced) WWTWs as they only rely on the physical separation of sludge  
and scum from the liquid phase and anaerobic biodegradation.<sup>47</sup> Wardhani et al.<sup>81</sup>  
only included four peer-reviewed studies on seven APIs analysed in ST effluent, a  
small fraction of the conducted research, to discuss the impact to Indonesia  
specifically. Both Lusk et al.<sup>79</sup> and Schaidler et al.<sup>49</sup> included the potential impact of  
STs to groundwater quality but concentrations in receiving surface water were not

View Article Online  
DOI: 10.1039/D5EM00568J

1 included, potentially due to the lack of available data in 2017 (Figure 2). Over the  
2  
3 last ten years, OWTWs have received increasing attention as pathways for APIs into  
4  
5 the environment, and ground- and surface water has been studied more  
6  
7 frequently,<sup>46,83–89</sup> highlighting the need for an up to date review. The aim of this  
8  
9 review was therefore to detail the progress made on understanding ST discharges  
10  
11 as a pathway of APIs to the aquatic environment. The detection and removal of  
12  
13 APIs in STs, and the difference to other, alternative, OWTWs and secondary  
14  
15 treatment steps, as well as their contribution to the receiving environment, and  
16  
17 mitigation strategies are critically discussed.  
18  
19  
20  
21  
22  
23  
24  
25  
26  
27  
28  
29  
30  
31  
32  
33  
34  
35  
36  
37  
38  
39  
40  
41  
42  
43  
44  
45  
46  
47  
48  
49  
50  
51  
52  
53  
54  
55  
56  
57  
58  
59  
60

### 3 Search strategy and methods

A literature search was conducted on literature available in June 2025 on Scopus  
and Web of Science using relevant key words: ("pharmaceutical" OR "drug" OR  
"hormone") AND ("septic tank" OR "septic system" OR "onsite wastewater  
treatment" OR "on-site wastewater treatment" OR "cluster" OR "decentralised  
wastewater treatment") and ("emerging contaminant" OR "emerging concern" OR  
"emerging pollutant" OR "trace organic" OR "micropollutant" OR "organic  
contaminant") AND ("septic tank" OR "septic system"). Results combining  
("emerging contaminant" OR "emerging concern" OR "emerging pollutant" OR  
"trace organic" OR "micropollutant" OR "organic contaminant") AND ("onsite  
wastewater treatment" OR "on-site wastewater treatment" OR "cluster" OR  
"decentralised wastewater treatment") were filtered manually for relevant articles  
using the title and abstract if appropriate. Research that did not include APIs or  
hormones was excluded, and studies found through cross-references were added.  
Caffeine was not included, as its main source is not from pharmaceutical use. One  
scientific report was included in addition to peer-reviewed scientific articles.<sup>90</sup>  
For the purpose of this review, ST refers to a conventional ST (Figure 1) that can  
receive wastewater from one or multiple households, a community or from a  
specialised purpose, e.g., a café, school or office building. When possible, a



1  
2  
3 distinction between the effluent after conventional ST treatment (ST effluent) and  
4 after secondary treatment, e.g., an infiltration field or constructed wetland, (final  
5 effluent) was made. Alternative treatment systems, such as small packaged  
6 treatment plants were also included. For the purpose of this review, an alternative  
7 OWTW is anything other than a ST.

8  
9 To report the concentration of APIs, if it was not given, the arithmetic mean was  
10 calculated using only reported concentrations (i.e., not incorporating detection or  
11 quantification limits for samples below said limits) as this was the most common  
12 approach in studies that reported mean concentrations. When only influent  
13 concentrations ( $c_{Inf}$ ) and removal efficiencies (Equation 1) were given, effluent  
14 concentrations ( $c_{Eff}$ ) were calculated using Equation 2. As a last option,  
15 concentrations were estimated from graphs.

$$16 \text{Removal (\%)} = \frac{c_{Inf} - c_{Eff}}{c_{Inf}} * 100\% \quad (1)$$

$$17 c_{Eff} = c_{Inf} - \frac{\text{Removal (\%)} \cdot c_{Inf}}{100\%} \quad (2)$$

18  
19 When only the median concentration was given, this was used instead.

20 To determine potential environmental implications, the hazard quotient (HQ) was  
21 calculated by dividing the measured environmental concentration of individual APIs  
22 by their lowest freshwater PNEC found in the NORMAN Ecotoxicology Database.<sup>69,91</sup>

23  
24 Data was processed in Microsoft Excel (version 2505) and R<sup>92</sup> (version 4.3.1) with  
25 RStudio<sup>93</sup> (2023.09.01) using the packages dplyr<sup>94</sup>, openxlsx<sup>95</sup>, readxl<sup>96</sup>, tidyverse<sup>97</sup>  
26 and rstatix<sup>98</sup> for data manipulation and statistical analysis. Significant differences ( $p$   
27  $< 0.05$ ) were determined using Wilcoxon tests, due to the nonparametric nature of  
28 the data. Graphs were made in R using ggplot2<sup>99</sup> and patchwork<sup>100</sup>. The map was  
29 produced in QGIS<sup>101</sup>re (version 3.28.3) from open access data (TechGEO.org<sup>102</sup>).

## 4 Occurrence of Active pharmaceutical ingredients in onsite wastewater treatment works

View Article Online  
DOI: 10.1039/D5EM00568J

### 4.1 Wastewater concentrations

In total, 77 studies determining APIs in conventional STs, alternative OWTWs or in the receiving environment were identified, of which 43 included wastewater analysis (Table 1). Most studies used grab sampling only ( $n = 40$ ), taking a specific volume from one location at one point in time. Furthermore, often only effluent samples were taken after ST treatment or/and at the final effluent point (Table 1).<sup>61,66,67,74,87,90,103-106</sup> This could be due to the difficulties associated with accessing the influent, but the expected high variability in household wastewater was also mentioned as a reason.<sup>61</sup> Despite a high number of studies reporting APIs in STs specifically ( $n=32$ ), only eight studies analysed APIs in both ST influent and ST effluent ( $n = 6$ )<sup>69,107-111</sup> or ST influent and final effluent ( $n = 2$ ),<sup>66,112</sup> highlighting the challenge of fully assessing the behaviour of APIs in STs. Although additional treatment of ST effluent, e.g., through an infiltration field is common, it is not always required.<sup>113</sup> In recent years, alternative OWTWs have gained increasing attention,<sup>60,62,65,88,108,114</sup> potentially due to the need to improve decentralised wastewater treatment. Influent samples are however usually taken in alternative OWTWs ( $n = 9$ ) or in pilot-scale STs receiving influent from centralised WWTWs (Table 1).<sup>60,65,83,88,114-116</sup>

Generally, API concentrations were higher in ST influent and effluent than in final effluent after secondary treatment and in effluent from alternative OWTWs (Figure 3 using data from Table 1). However, a high variability of detected concentrations between different STs is observed.<sup>87,107</sup> For instance, Conn et al.<sup>107</sup> found naproxen at concentrations  $< 0.1 - 180 \mu\text{g L}^{-1}$  in influent and  $< 0.1 - 150 \mu\text{g L}^{-1}$  in effluent in composite samples from six different household STs. As STs are used by smaller groups than centralised WWTWs, individuals of the contributing population highly influence API concentrations. Mostly, OWTWs receiving wastewater from a

1 specialised use, such as a school, hospital or café, can show a distinctive pattern in  
2  
3 detected API concentrations.<sup>106,117</sup> For example, Stanford and Weinberg<sup>106</sup> reported  
4  
5 17 $\alpha$ -ethinylestradiol, an active ingredient in hormonal contraceptives, at up to 0.4  
6  
7  $\mu\text{g L}^{-1}$  in a ST effluent serving a boarding school for girls, higher than typical for  
8  
9 centralised WWTWs influents.<sup>118</sup> The temporal variability is also higher in OWTWs  
10  
11 as they receive fewer discrete wastewater inputs than centralised WWTWs.<sup>119</sup> In  
12  
13 community STs the differences between sampling events were smaller for  
14  
15 commonly prescribed pharmaceuticals with chronic use, such as venlafaxine,  
16  
17 metformin and propranolol, than for less common pharmaceuticals with chronic  
18  
19 use, e.g., metoprolol and sotalol, and for pharmaceuticals with acute use, e.g.,  
20  
21 antibiotics and antifungals.<sup>69</sup> Differences between STs also demonstrate the impact  
22  
23 of localised prescription behaviour. For example, high variability in the  
24  
25 enantioselectivity of APIs prescribed in enantiopure and racemic forms, e.g.,  
26  
27 citalopram and omeprazole, shows the greater use of enantiopure formulations at  
28  
29 some locations.<sup>120</sup> While the EF in five centralised WWTWs was 0.29 – 0.39 for  
30  
31 citalopram and 0.39 – 0.46 for desmethylcitalopram, respectively, EFs > 0.5 were  
32  
33 found in STs for both, indicating the prescription of enantiopure escitalopram over  
34  
35 the racemate (Figure 5).<sup>32,120,121</sup>

36  
37  
38  
39  
40  
41  
42  
43  
44  
45  
46  
47  
48  
49  
50  
51  
52  
53  
54  
55  
56  
57  
58  
59  
60  
There are a few APIs that are often analysed using targeted analytical methods,  
e.g., carbamazepine (56%), sulfamethoxazole (49%) and paracetamol (39%) were  
included in around half of the studies. This may be influenced by most studies being  
conducted in one country (the USA, Figure 4), and their comparative ease of  
analysis. However, both carbamazepine and sulfamethoxazole are also recognised  
as priority substances impacting groundwater quality by the EU.<sup>23</sup> For a number of  
compounds that are included on EU watch lists as possible APIs of environmental  
concern,<sup>2,19,20,24</sup> e.g. desmethylvenlafaxine,<sup>69,111</sup> tetracycline,<sup>46,109</sup> ofloxacin,<sup>69,111</sup>,  
clindamycin,<sup>110</sup> itraconazole, ketoconazole and oxytetracycline little or no data on  
their presence in STs is available. Since the performance of wastewater treatment

1  
2  
3 for API removal highly depends on the properties of the individual compound,<sup>29</sup> a large  
4 large variety of different APIs should be studied to fully assess STs for removal of  
5 APIs. Existing prioritisation schemes should be used as guidance to what APIs to  
6 include in future studies.<sup>4,19,21,23,25</sup>

7  
8  
9  
10  
11  
12 Effluent concentrations exceeded the lowest reported PNEC found for freshwater<sup>122</sup>  
13 for a number of APIs (Figure 3), highlighting the need for further treatment or  
14 dilution to mitigate environmental risk. The APIs most commonly detected at  
15 concentrations above the PNEC (HQ > 1) in ST effluent and final effluent were  
16 ibuprofen (n = 19), estrone (n = 15), diclofenac (n = 12) and sulfamethoxazole (n  
17 = 11), all recognised for their ecotoxicological risk to the environment.<sup>20,123</sup> The  
18 highest HQs in effluent samples were found for 17 $\alpha$ -ethinylestradiol (140,000),<sup>62</sup>  
19 17 $\beta$ -estradiol (30,000),<sup>62</sup> estrone (16,000)<sup>62</sup> and ibuprofen (79,000)<sup>124</sup> with at least  
20 one study determining a mean HQ > 10,000,<sup>62,124</sup> indicating the potential for STs to  
21 impact the receiving environment.

#### 22 **4.2 Solid phase concentrations**

23 Most studies solely focus on the liquid phase of wastewater when measuring APIs,  
24 potentially due to the additional cost and time associated with including analysis of  
25 the solids. So far, ST sludge has only been analysed in one preliminary study for  
26 APIs (n = 57).<sup>111</sup> Furthermore, one other study analysed hormones in sludge from  
27 alternative OWTWs (n = 5),<sup>125</sup> and one study investigated degradation and sorption  
28 of APIs (n = 23) from spiked wastewater in an alternative OWTW.<sup>60</sup>

29  
30  
31  
32  
33  
34  
35  
36  
37  
38  
39  
40  
41  
42  
43  
44  
45  
46  
47  
48  
49  
50  
51  
52  
53  
54  
55  
56  
57  
58  
59  
60  
61  
62  
63  
64  
65  
66  
67  
68  
69  
70  
71  
72  
73  
74  
75  
76  
77  
78  
79  
80  
81  
82  
83  
84  
85  
86  
87  
88  
89  
90  
91  
92  
93  
94  
95  
96  
97  
98  
99  
100  
101  
102  
103  
104  
105  
106  
107  
108  
109  
110  
111  
112  
113  
114  
115  
116  
117  
118  
119  
120  
121  
122  
123  
124  
125  
126  
127  
128  
129  
130  
131  
132  
133  
134  
135  
136  
137  
138  
139  
140  
141  
142  
143  
144  
145  
146  
147  
148  
149  
150  
151  
152  
153  
154  
155  
156  
157  
158  
159  
160  
161  
162  
163  
164  
165  
166  
167  
168  
169  
170  
171  
172  
173  
174  
175  
176  
177  
178  
179  
180  
181  
182  
183  
184  
185  
186  
187  
188  
189  
190  
191  
192  
193  
194  
195  
196  
197  
198  
199  
200  
201  
202  
203  
204  
205  
206  
207  
208  
209  
210  
211  
212  
213  
214  
215  
216  
217  
218  
219  
220  
221  
222  
223  
224  
225  
226  
227  
228  
229  
230  
231  
232  
233  
234  
235  
236  
237  
238  
239  
240  
241  
242  
243  
244  
245  
246  
247  
248  
249  
250  
251  
252  
253  
254  
255  
256  
257  
258  
259  
260  
261  
262  
263  
264  
265  
266  
267  
268  
269  
270  
271  
272  
273  
274  
275  
276  
277  
278  
279  
280  
281  
282  
283  
284  
285  
286  
287  
288  
289  
290  
291  
292  
293  
294  
295  
296  
297  
298  
299  
300  
301  
302  
303  
304  
305  
306  
307  
308  
309  
310  
311  
312  
313  
314  
315  
316  
317  
318  
319  
320  
321  
322  
323  
324  
325  
326  
327  
328  
329  
330  
331  
332  
333  
334  
335  
336  
337  
338  
339  
340  
341  
342  
343  
344  
345  
346  
347  
348  
349  
350  
351  
352  
353  
354  
355  
356  
357  
358  
359  
360  
361  
362  
363  
364  
365  
366  
367  
368  
369  
370  
371  
372  
373  
374  
375  
376  
377  
378  
379  
380  
381  
382  
383  
384  
385  
386  
387  
388  
389  
390  
391  
392  
393  
394  
395  
396  
397  
398  
399  
400  
401  
402  
403  
404  
405  
406  
407  
408  
409  
410  
411  
412  
413  
414  
415  
416  
417  
418  
419  
420  
421  
422  
423  
424  
425  
426  
427  
428  
429  
430  
431  
432  
433  
434  
435  
436  
437  
438  
439  
440  
441  
442  
443  
444  
445  
446  
447  
448  
449  
450  
451  
452  
453  
454  
455  
456  
457  
458  
459  
460  
461  
462  
463  
464  
465  
466  
467  
468  
469  
470  
471  
472  
473  
474  
475  
476  
477  
478  
479  
480  
481  
482  
483  
484  
485  
486  
487  
488  
489  
490  
491  
492  
493  
494  
495  
496  
497  
498  
499  
500  
501  
502  
503  
504  
505  
506  
507  
508  
509  
510  
511  
512  
513  
514  
515  
516  
517  
518  
519  
520  
521  
522  
523  
524  
525  
526  
527  
528  
529  
530  
531  
532  
533  
534  
535  
536  
537  
538  
539  
540  
541  
542  
543  
544  
545  
546  
547  
548  
549  
550  
551  
552  
553  
554  
555  
556  
557  
558  
559  
560  
561  
562  
563  
564  
565  
566  
567  
568  
569  
570  
571  
572  
573  
574  
575  
576  
577  
578  
579  
580  
581  
582  
583  
584  
585  
586  
587  
588  
589  
590  
591  
592  
593  
594  
595  
596  
597  
598  
599  
600  
601  
602  
603  
604  
605  
606  
607  
608  
609  
610  
611  
612  
613  
614  
615  
616  
617  
618  
619  
620  
621  
622  
623  
624  
625  
626  
627  
628  
629  
630  
631  
632  
633  
634  
635  
636  
637  
638  
639  
640  
641  
642  
643  
644  
645  
646  
647  
648  
649  
650  
651  
652  
653  
654  
655  
656  
657  
658  
659  
660  
661  
662  
663  
664  
665  
666  
667  
668  
669  
670  
671  
672  
673  
674  
675  
676  
677  
678  
679  
680  
681  
682  
683  
684  
685  
686  
687  
688  
689  
690  
691  
692  
693  
694  
695  
696  
697  
698  
699  
700  
701  
702  
703  
704  
705  
706  
707  
708  
709  
710  
711  
712  
713  
714  
715  
716  
717  
718  
719  
720  
721  
722  
723  
724  
725  
726  
727  
728  
729  
730  
731  
732  
733  
734  
735  
736  
737  
738  
739  
740  
741  
742  
743  
744  
745  
746  
747  
748  
749  
750  
751  
752  
753  
754  
755  
756  
757  
758  
759  
760  
761  
762  
763  
764  
765  
766  
767  
768  
769  
770  
771  
772  
773  
774  
775  
776  
777  
778  
779  
780  
781  
782  
783  
784  
785  
786  
787  
788  
789  
790  
791  
792  
793  
794  
795  
796  
797  
798  
799  
800  
801  
802  
803  
804  
805  
806  
807  
808  
809  
810  
811  
812  
813  
814  
815  
816  
817  
818  
819  
820  
821  
822  
823  
824  
825  
826  
827  
828  
829  
830  
831  
832  
833  
834  
835  
836  
837  
838  
839  
840  
841  
842  
843  
844  
845  
846  
847  
848  
849  
850  
851  
852  
853  
854  
855  
856  
857  
858  
859  
860  
861  
862  
863  
864  
865  
866  
867  
868  
869  
870  
871  
872  
873  
874  
875  
876  
877  
878  
879  
880  
881  
882  
883  
884  
885  
886  
887  
888  
889  
890  
891  
892  
893  
894  
895  
896  
897  
898  
899  
900  
901  
902  
903  
904  
905  
906  
907  
908  
909  
910  
911  
912  
913  
914  
915  
916  
917  
918  
919  
920  
921  
922  
923  
924  
925  
926  
927  
928  
929  
930  
931  
932  
933  
934  
935  
936  
937  
938  
939  
940  
941  
942  
943  
944  
945  
946  
947  
948  
949  
950  
951  
952  
953  
954  
955  
956  
957  
958  
959  
960  
961  
962  
963  
964  
965  
966  
967  
968  
969  
970  
971  
972  
973  
974  
975  
976  
977  
978  
979  
980  
981  
982  
983  
984  
985  
986  
987  
988  
989  
990  
991  
992  
993  
994  
995  
996  
997  
998  
999  
1000

Sludge can contain a large variety of APIs at a wide concentration range from ng  
kg<sup>-1</sup> to few mg kg<sup>-1</sup> dry weight (dw).<sup>126-128</sup> For example, 53% of the analysed APIs  
(n = 30) were found in a sludge sample from a community ST at concentrations  
from 4  $\mu\text{g kg}^{-1}$  dw (bisoprolol) to 3,617  $\mu\text{g kg}^{-1}$  dw (paracetamol).<sup>111</sup> Similar  
concentrations are reported in sludge from centralised WWTWs, with concentrations  
> 1 mg kg<sup>-1</sup> dw most frequently reported for antibiotics and anti-inflammatory  
drugs.<sup>129</sup> Estrone concentrations were similar in activated sludge from single

1  
2  
3 household OWTWs ( $n = 3$ )<sup>125</sup> and community ST sludge ( $n = 1$ ),<sup>111</sup> but elevated for  
4 estriol in one of the single household OWTW, potentially due to pregnancy.<sup>125</sup> ST  
5 require regular emptying to remove sludge and scum that were separated from the  
6 liquid wastewater phase, and then treated in centralised WWTWs.<sup>51,53</sup> APIs can  
7 persist in conventional wastewater treatment and enter the environment when  
8 anaerobically digested (treated) sludge is applied in agriculture.<sup>128,130</sup> For example,  
9 eight pollutants (sertraline, venlafaxine, N-desethylamiodarone, amiodarone,  
10 norsesertraline, trazodone, amitriptyline and ketoconazole) were found to pose a risk  
11 to the environment in digested sludge-amended soils after sludge treatment from  
12 centralised wastewater treatment.<sup>126</sup> Although consideration of all possible  
13 pathways for APIs entering the environment from STs is required, ST sludge only  
14 makes up a small proportion of all sludge treated in a centralised WWTW.

15 APIs can be excreted in solid matter or sorb to particles present in wastewater  
16 influent and effluent. Hence, their total concentration can be underestimated by  
17 analysing the liquid phase only,<sup>6,45,111,131</sup> the most common analysis strategy  
18 used.<sup>66,88,105,114</sup> Sometimes, samples are not filtered and the total concentration  
19 (liquid and solid phase) is reported instead.<sup>119</sup> So far, only two studies analysed  
20 suspended solids and liquid phase separately in STs.<sup>69,111</sup> Although contributions of  
21 suspended solids to the total concentration of APIs in a sample are generally small,  
22 they can be significant for APIs with high sorption tendencies, such as antibiotics  
23 and antidepressants.<sup>127,132-134</sup> For instance, contributions of APIs in suspended  
24 solids to their total concentration in wastewater (liquid and solid) were found to be  
25 > 99% for oxytetracycline ( $1,403 \mu\text{g kg}^{-1}$ ), chlortetracycline ( $1,623 \mu\text{g kg}^{-1}$ ) and  
26 tetracycline ( $892 \mu\text{g kg}^{-1}$ ) in final effluent of a centralised WWTW.<sup>134</sup>

27 A wider range of percentage contribution of APIs in suspended solids to the total  
28 concentration was found in STs than centralised WWTWs.<sup>69</sup> For example, the  
29 contribution of suspended solids to the total concentration of fluoxetine was 1.2 –  
30 94% in effluents from five STs ( $n = 60$ )<sup>69</sup> but 39 – 74% in effluents from seven



WWTWs (n = 84),<sup>132</sup> both sampled monthly for one year. Wastewater properties including temperature, pH, ionic strength, organic matter and composition of suspended solids influence the sorption of APIs.<sup>127,135,136</sup> Hence, a range of percentage contribution is typically observed in wastewater, which is higher in STs due to the more variable wastewater composition.<sup>69,119</sup>

Suspended solids can act as a vector for API release into the environment, when particles are not completely removed in wastewater treatment.<sup>6,45</sup> Since, the removal of suspended solids is often lower in STs than centralised WWTWs,<sup>62,69,74</sup> APIs sorbed to particles can have a higher contribution to total concentrations.<sup>69</sup> Hence, the risk of underestimating the possible environmental impact of ST effluent discharges is higher, when the sorbed concentration is not accounted for. For instance, high HQs up to 39 for clotrimazole were found when the total concentration in ST effluent as opposed to the liquid phase only was used, where all HQs were < 1.<sup>69</sup>

### 4.3 Removal

Removal efficiencies are typically calculated by dividing the difference in influent concentrations and effluent concentrations by influent concentrations (Equation 1),<sup>74</sup> using either mean concentrations or individual detections. While, removal efficiencies were often calculated for advanced treatment (n = 11)<sup>65,74,88,103,110,114,115,137-140</sup> and in pilot scale studies or otherwise controlled environments (n = 8),<sup>65,74,88,103,110,114,137,138</sup> only two studies report removal efficiencies in full-scale STs.<sup>74,110</sup> The high temporal variability in influent and effluent concentrations, differences between individual STs and often small sample sizes makes the determination of removal efficiencies difficult.<sup>69,107</sup> Alternatively, statistical analysis of influent and effluent concentrations could be a useful tool to determine if there is removal in the STs. Significant differences between API concentrations in influent and effluent concentrations would indicate removal in STs.<sup>139</sup> Effluent concentrations that are significantly higher than in centralised



WWTWs also indicate no removal, in particular if the API is easily degraded in secondary wastewater treatment such as metformin and ibuprofen.<sup>69</sup>

The two possible mechanisms discussed for API removal in STs are anaerobic biodegradation and the physical separation of solids from the wastewater when they are bound to sludge or scum particles.<sup>49</sup> Sorption processes have not been studied in STs. In single-house membrane bioreactors, sorption played a significant role in the removal of some APIs, e.g., macrolide antibiotics (azithromycin, clarithromycin, roxithromycin) but was negligible for others, e.g., ibuprofen and sulfonamide antibiotics (sulfamethoxazole, sulfadiazine, sulfamethazine, sulfadimethoxine, sulfapyridine).<sup>60</sup> For instance, due to little biodegradation and high sorption, 40% of clarithromycin remained sorbed to the sludge two weeks after spiking.<sup>60</sup> This is in line with research on sorption of APIs to the sludge in centralised WWTWs.<sup>126-128</sup>

Although, the degradation of APIs is greater under aerobic conditions, anaerobic biodegradation can still be a relevant removal mechanism.<sup>141-143</sup> For example, anaerobic transformation has been reported for sulfamethoxazole, trimethoprim, paracetamol, venlafaxine, atenolol and clarithromycin for iron and sulphate reducing conditions with removal > 60% in an anaerobic reactor.<sup>143</sup> Anaerobic biodegradation has not been studied in STs. The comparatively longer solids retention times and HRTs of STs could facilitate the development of different microbial populations that biodegrade APIs. Enantioselective analysis can also be useful to investigate removal processes in STs,<sup>120</sup> as enantiomers are considered to be affected equally by abiotic processes, such as sorption, but biological degradation processes and human metabolism can be stereoselective.<sup>144,145</sup> For instance, the preference of *S*(+)-citalopram over *R*(-)-citalopram in human metabolism and biological wastewater treatment, leads to enrichment of *R*(-)-citalopram in wastewater influent and effluent (EF < 0.5).<sup>8,32</sup> In centralised WWTWs, the EF is reduced during aerobic biological wastewater treatment (Figure

5,  $p = 7.37 \cdot 10^{-7}$ ). There are no significant differences between influent and effluent of STs ( $p = 0.1583$ ) and therefore no enantioselective degradation, adding further evidence to the lack of biological degradation processes for APIs in the anaerobic environments of STs. However, a high variability of EFs was found (Figure 5), introducing uncertainty to identifying small differences in enantioselectivity.

Overall, API removal in STs is expected to be limited,<sup>110</sup> since sorption is generally small for the majority of APIs,<sup>29</sup> and biodegradation is greater under aerobic than anaerobic conditions.<sup>142</sup> Therefore, ST effluent is often further treated, e.g., in infiltration fields, constructed wetlands (mainly anaerobic or aerated), bio- or sand filters or aerobic treatment units<sup>61,103,105,137,139</sup> to increase API removal.<sup>74,105,108</sup> For example, Du et al.<sup>74</sup> found 12% removal of atenolol in STs compared to 78% after secondary treatment in a wetland and 48% in a centralised activated sludge WWTW. The removal of APIs can be influenced by the season, e.g., removal efficiencies of diclofenac during warm and cold seasons were 67% and 5% in a constructed wetland, and 86% and 42% in an aerated treatment unit, respectively.<sup>66</sup> Removal is particularly high under aerated conditions, such as aerobic treatment systems and aerated wetlands.<sup>66,74,103</sup> For instance, removal of ketoprofen was -30–74% in anaerobic constructed wetlands, 64–100% in continuously aerated wetlands, and 60–97% under intermittent aeration.<sup>103</sup> Hence, the impact of OWTWs to the receiving environment varies depending on the location and treatment technology.

## 5 Impact of discharges from onsite wastewater treatment works to the aquatic environment

### 5.1 Groundwater

Discharges from STs and other OWTWs can contribute to API concentrations in ground- and surface water due to comparatively high effluent concentrations despite expected large dilution factors in receiving waters.<sup>46,117,146</sup> Hence, STs and

1  
2  
3 other OWTWs have received increasing attention as pathways for APIs into the View Article Online  
DOI: 10.1039/D5EM00568J

4  
5 environment in recent years (Table 2). Samples were usually taken as grab  
6  
7 samples (n = 46) but passive samplers were also used (n = 2).<sup>112,147</sup> Again, the  
8  
9 majority of research (57%) on APIs in ground- or surface water impacted by  
10  
11 OWTWs was done in the USA (Figure 4), mainly at the East coast, potentially driven  
12  
13 by the high use of STs there. Approximately 25% of the total population in the USA  
14  
15 use OWTWs, mostly being STs that discharge to the ground via an infiltration field.  
16  
17 This is as high as 85% in some rural and forested areas in the Northeast.<sup>148</sup>

18  
19 ST discharges have been identified as a pathway for APIs into underlying shallow  
20  
21 groundwater and aquifers.<sup>149</sup> Prescription and over-the-counter drugs were  
22  
23 detected in groundwater at concentrations from low ng L<sup>-1</sup> to hundreds of µg L<sup>-1</sup>  
24  
25 (Figure 6 using data from Table 2). The highest concentrations were found for  
26  
27 commonly used nonsteroidal anti-inflammatory drugs (NSAIDs) ibuprofen (20 µg  
28  
29 L<sup>-1</sup>) and the aspirin metabolite, salicylic acid (12 µg L<sup>-1</sup>).<sup>104</sup> Overall, a high  
30  
31 variability in the detection and concentrations of APIs in groundwater is observed  
32  
33 (Figure 6). For example, the two most analysed APIs sulfamethoxazole and  
34  
35 carbamazepine were detected at mean concentrations of  $6.9 \cdot 10^{-5}$  – 0.19 µg L<sup>-1</sup>  
36  
37 and  $4.3 \cdot 10^{-5}$  – 0.29 µg L<sup>-1</sup>, respectively (Figure 6). Groundwater concentrations  
38  
39 are impacted by varying household or site specific conditions.<sup>86</sup> Site specific  
40  
41 conditions include for instance the type and design of OWTWs and its performance  
42  
43 for API removal, the proximity to discharge points, and factors affecting sorption  
44  
45 and degradation. Sorption and degradation are for example influenced by the soil  
46  
47 type,<sup>150,151</sup> redox conditions,<sup>104,148</sup> pH,<sup>86</sup> organic carbon content,<sup>86,152</sup> water  
48  
49 depth,<sup>104,146,152</sup> and travel time from release to sampling point.<sup>46,86,150</sup> Differences  
50  
51 between individual APIs depend on their sorption potential, mobility and  
52  
53 degradability in soil.<sup>46,104,117,153</sup> Similar to what has been discussed for APIs in ST  
54  
55 effluents, groundwater concentrations are also impacted by the small contributing  
56  
57  
58  
59  
60

1  
2  
3 population leading to high temporal variability within OWTWs and spatial variability  
4 between different OWTWs.<sup>86</sup> View Article Online  
DOI: 10.1039/D5EM00568J

5  
6  
7  
8 Generally, concentrations and detection frequencies were lower in groundwater  
9 than in STs and infiltration fields<sup>150,151</sup> due to the reduction of many APIs via  
10 physical, chemical, and biological processes within the vadose “unsaturated” zone  
11 between the land surface and the groundwater table.<sup>46,104,117,149,153</sup> For instance,  
12 Godfrey et al.<sup>149</sup> found a reduction of carbamazepine and sulfamethoxazole  
13 concentrations by 1.2 – 5 times and 15 – 1,200 times, but still detected both  
14 compounds in groundwater impacted by STs. However, higher groundwater  
15 concentrations similar to WWTW’s influent also have been reported.<sup>104</sup> Groundwater  
16 concentrations can exceed concentrations found in the corresponding ST  
17 effluent.<sup>46,150</sup> This could be due to surface water run-off as a direct pathway for  
18 APIs to groundwater, deconjugation of metabolites back to the parent API,  
19 accumulation of persistent compounds due to continuous discharges, or desorption  
20 when APIs are released from suspended solids in wastewater into  
21 groundwater.<sup>29,46,131</sup> Furthermore, groundwater concentrations might appear higher  
22 due to the high variability in API concentrations in wastewater which cannot be  
23 accounted for by periodic grab sampling. Normally, groundwater concentrations  
24 are, as expected, higher at sampling points located on the down- rather than the  
25 up-gradient of the ST.<sup>46,149</sup> However, groundwater flow patterns can be difficult to  
26 predict<sup>154</sup> and lower or similar concentrations have also been reported down-  
27 gradient.<sup>46,150</sup> Del Rosario et al.<sup>150</sup> reported higher API concentrations up-gradient,  
28 and suggested other STs as the source.

29  
30  
31 For the majority of APIs and studies, concentrations were below the lowest PNEC  
32 found for freshwater,<sup>122</sup> suggesting that they pose a relatively low risk to the  
33 environment (Figure 6). However, PNECs were exceeded for 17 $\beta$ -estradiol, estrone  
34 and ibuprofen (Figure 6) using mean concentrations from individual  
35 studies,<sup>46,104,148,150,155</sup> and additionally for individual detections of diclofenac,  
36  
37  
38  
39  
40

1  
2  
3 naproxen and sulfamethoxazole in groundwater.<sup>46,104,152</sup> Since areas with OWTWs, View Article Online  
DOI: 10.1039/D5EM00568J  
4 also often rely on groundwater wells as a drinking water source, ST discharges can  
5 impact drinking water quality in rural areas.<sup>156–158</sup> Human consumption of the  
6 impacted drinking water is the major concern of the detected APIs in groundwater  
7 receiving discharges from OWTWs. API concentrations in tap water impacted by  
8 OWTWs may exceed those typically found in public drinking water supplies.<sup>157</sup>  
9  
10  
11  
12  
13  
14  
15

## 16 **5.2 Surface water**

17 Nearby rivers, lakes, ponds or estuaries can be impacted through the transport of  
18 APIs from groundwater to surface water or via direct discharge of ST effluent or  
19 final effluent discharges.<sup>89</sup> Although many STs discharge to the ground through  
20 infiltration fields or secondary treatment systems (Table 1), direct effluent  
21 discharge to water bodies is possible.<sup>69</sup> For instance, in Scotland 21% of registered  
22 private STs discharge directly to an inland water body,<sup>59</sup> which was indicated by  
23 high paracetamol concentrations ( $1,100 \mu\text{g L}^{-1}$ ) in one sample by Ramage et al.<sup>87</sup>  
24 Furthermore, preferential flow paths via drainage networks such as storm drains  
25 can provide a direct entry pathway of APIs from ground discharge to surface  
26 water.<sup>84,89</sup>  
27  
28  
29  
30  
31  
32  
33  
34  
35  
36  
37  
38  
39  
40  
41  
42  
43  
44  
45  
46  
47  
48  
49  
50  
51  
52  
53  
54  
55  
56  
57  
58  
59  
60

In studies where both surface water and ground water were collected from the  
same geographical area, most API concentrations were lower in surface water than  
the corresponding groundwater due to degradation and dilution effects.<sup>46,86,146,150</sup>  
However, similar concentrations for both matrices have also been found. For  
instance, Brewton et al.<sup>146</sup> reported primidone concentrations of  $1.1 \cdot 10^{-3} - 9.6 \cdot$   
 $10^{-3} \mu\text{g L}^{-1}$  in groundwater and  $6.7 \cdot 10^{-3} \mu\text{g L}^{-1}$  at the nearest surface water  
sampling point.

Surface water concentrations are often influenced by multiple sources, including  
point sources, e.g., centralised WWTWs and direct discharge from OWTWs, and  
diffuse sources, e.g., wastewater impacted groundwater and agricultural runoff.<sup>159–</sup>  
<sup>161</sup> Then, centralised WWTWs are generally the main entry source for APIs to the

1 aquatic environment.<sup>89,159,162</sup> However, larger community STs can have significant  
2 contributions to river water concentrations for some APIs.<sup>111</sup> For example,  
3 concentrations of paracetamol and its metabolite 3-methoxyparacetamol increased  
4 by a factor of 14 and 10 in river water downstream of a community ST compared to  
5 upstream to 0.59 and 0.026 L<sup>-1</sup>, respectively.<sup>111</sup> Typically, API concentrations are  
6 lower in areas impacted by OWTWs only than in areas impacted by centralised  
7 WWTWs only, or centralised and decentralised systems.<sup>163</sup> For instance,  
8 carbamazepine and paracetamol concentrations were 0.026 – 0.21 µg L<sup>-1</sup> and 2.0 ·  
9 10<sup>-3</sup> – 0.013 µg L<sup>-1</sup> downstream of a centralised WWTWs, and < 1.1 · 10<sup>-4</sup> – 2.2 ·  
10 10<sup>-3</sup> µg L<sup>-1</sup> and < 5.6 · 10<sup>-4</sup> – 9.9 · 10<sup>-3</sup> µg L<sup>-1</sup> upstream of the WWTWs in a river  
11 receiving ST discharges only, respectively.<sup>159</sup> While centralised WWTWs have higher  
12 removal efficiencies, their greater impact to API concentrations in surface waters  
13 can be attributed to lower dilution factors.<sup>62,89,159,164</sup>

14 STs are still an important pathway for APIs demonstrated by their presence in the  
15 impacted environment at ecotoxicologically relevant concentrations.<sup>69,164</sup> For  
16 instance, mean concentrations of 17β-estradiol, ampicillin, ibuprofen, memantine,  
17 palmitamid, paracetamol and trihexyphenidyl exceeded the PNEC (HQ up to 50) in  
18 surface water at 18 detections from a total of nine studies (Figure 6), representing  
19 a small proportion of the analysed samples (≤ 5%). In particular in surface waters  
20 with low effluent dilution factors, e.g., small streams,<sup>69,85,87</sup> or in areas with a high  
21 density of OWTWs,<sup>84,154,165</sup> direct ST discharges<sup>87</sup> or malfunctioning STs,<sup>164</sup>  
22 concentrations can exceed those typically reported for catchments impacted by  
23 centralised WWTWs.<sup>85</sup> Repairing or replacing failing STs can reduce API  
24 concentrations in nearby surface waters substantially.<sup>164</sup>

25 In rural areas with low population densities, other sources than human wastewater  
26 such as agriculture, e.g. large animal husbandry operations, recreational activities  
27 and improper waste disposal, can contribute to API concentrations in surface  
28 water.<sup>115,159,161,166</sup> Therefore, effort was made to distinguish between different  
29



pathways (STs vs centralised WWTWs and STs vs agriculture) into the environment. Proposed tracers include human consumption products, e.g., sucralose<sup>46,146,167</sup> and caffeine;<sup>85,149,168</sup> human APIs, e.g., paracetamol, carbamazepine<sup>146,149,156</sup> or sulfamethoxazole;<sup>169</sup> traditional water quality parameters, e.g., chloride,<sup>46</sup> or ratios of different compounds or parameters.<sup>85,170</sup> Differences in the enantioselective composition of effluent from centralised WWTWs and STs, e.g., using the EF of naproxen, were also proposed as ST tracers.<sup>120</sup> The simultaneous presence of infrequently used pharmaceuticals, e.g., carbamazepine and sulfamethoxazole, indicates influence of multiple waste streams found in centralised WWTWs or effluent from multiple households over single house STs.<sup>164</sup>

## 6 Future perspectives

### 6.1 Monitoring strategy

Previous research, has often focused on the liquid phase of the ST effluent only.<sup>46,61,87,103–105</sup> One challenge of sampling ST influent, particularly for smaller systems, is the accessibility to a suitable sampling point. The majority of STs are used by one or few households over whole communities, where normally the influent pipe directly connects the house to the ST underground. Community STs or STs specifically designed for research purposes are often equipped with suitable sampling points, allowing the collection of influent and effluent samples.<sup>69,109–111,137</sup> However, they are maintained better than smaller systems and their performance therefore may not be representative of such typical ST systems. Furthermore, API concentrations might not be representative of typical single-household STs, as they are used by larger groups of people or people with specific demographics, e.g., university students (Table 1). For full-scale STs, information on maintenance, e.g., the emptying frequency, and design, e.g., torpedo vs rectangular, number of compartments in baffled reactors and tank size are often not discussed, potentially due to limited data availability. However, obtaining this information in future studies is important as it can impact the ST performance for API removal. Future

1  
2  
3 studies should include both private STs (the most commonly used OWTW) and  
4 community STs that have highest likely risk due to their smallest dilution factor of  
5 discharges in the environment.  
6  
7

View Article Online  
DOI: 10.1039/D5EM00568J

8  
9  
10 Most studies are not extensive in nature, e.g., around half of the studies (n = 20;  
11 47%) only sampled once or twice (Table 1) and all except three studies<sup>107,108,112</sup>  
12 used grab sampling only (n = 40), not allowing to address maintenance related  
13 changes in the STs' performance. Owing to the small contributing populations to  
14 STs, the temporal variability in influent and effluent concentrations of APIs and the  
15 differences between different STs are high,<sup>69,106,119</sup> demanding a composite  
16 sampling approach. For instance, Ort et al.<sup>171</sup> recommended a flow-weighted  
17 sampling process with a sub-sampling frequency of 5 minutes, as time- or flow-  
18 weighted samples taken at larger intervals might not be representative of highly  
19 dynamic wastewater. This is especially important for STs with highly variable flow  
20 conditions and API concentrations. Conn et al.<sup>107</sup> took flow-weighted samples from  
21 ST influents but time-weighted samples from ST effluent, potentially due to access  
22 difficulties at ST effluent points. Mladenov et al.<sup>108</sup> collected 24-h time-weighted  
23 composite samples from ST influent and effluent points 24 h apart to account for  
24 the HRT of 1.4 days. Flow-weighted composite sampling with a high sample number  
25 and low sub-sampling frequencies is recommended for future work when  
26 investigating API removal in small WWTWs such as STs. Even though this is more  
27 expensive and logistically challenging due to the rural location of many STs,  
28 benchmarking the removal efficiency of STs accurately for comparison to other  
29 WWTWs is essential. This would also allow determining ST performance for API  
30 removal at different temperatures and before or after sludge removal. In general,  
31 microbial activity and therefore biodegradation increases at higher temperatures,  
32 which can impact the efficiency of wastewater treatment.<sup>172-174</sup> Emptying the STs  
33 can impact their performance due to an increase in volume and thereby HRT and  
34 removal of beneficial microorganisms. Sampling should be conducted over  
35  
36  
37  
38  
39  
40  
41  
42  
43  
44  
45  
46  
47  
48  
49  
50  
51  
52  
53  
54  
55  
56  
57  
58  
59  
60

consecutive days equivalent to several times the estimated HRT to account for the temporal variability in wastewater concentrations. Alternatively, passive sampling also allows the determination of time weighted average concentrations over week-long deployment periods,<sup>175,176</sup> and hence the removal efficiencies in STs.<sup>112</sup> Due to changes in ST performance, multiple deployments throughout the year are necessary. Information on short-term variability, only assessable by grab sampling, provide useful information on individual's practices,<sup>120</sup> and it might be beneficial to combine multiple sampling approaches after carefully evaluating the objectives of each study.

Further research on a broad range of APIs in ground- and surface water is needed as their occurrence depends on the physicochemical characteristics of individual APIs that impact their sorption potential, mobility and degradability in soil.<sup>104,117,153</sup> However, 75% of studies (n = 34) using targeted methods included 20 or less APIs (Table 2) and often the same APIs, such as carbamazepine (n = 32), sulfamethoxazole (n = 28), paracetamol (n = 18) and ibuprofen (n = 17), are analysed (Figure 6). Alongside ibuprofen (HQ up to 200),<sup>104</sup> high HQ  $\geq 10$  were also found for less frequently analysed APIs palmitamide,<sup>83</sup> ampicillin,<sup>83</sup> 17 $\beta$ -estradiol,<sup>148</sup> and estrone,<sup>148</sup> that are not all recognised as priority substances<sup>23</sup>, highlighting the need for intensive monitoring to further our understanding. There is limited information available on some APIs included on the last EU watch list,<sup>24</sup> e.g., clindamycin (n = 1),<sup>161</sup> itraconazole (n = 0), ketoconazole (n = 1)<sup>155</sup>, oxytetracycline (n = 1),<sup>162</sup> and guanylurea (n = 2). As discussed for ST effluent, the high temporal and spatial variability need to be considered. Both long-term, due to the seasonality of pharmaceutical use and river flow, and short-term variability should be taken into account.<sup>85,159,164</sup> Again, composite or passive samplers would allow to determine average contribution of ST discharges to the receiving environment.<sup>147</sup>

Antimicrobial resistance (AMR) is a significant concern to global human health.<sup>177</sup> – View Article Online  
DOI: 10.1039/D5EM00568J

<sup>179</sup> So far, few studies have been conducted in areas impacted by STs, potentially because discharges from centralised WWTWs and agricultural inputs are usually highlighted as the most important pathways for ARGs into the environment.<sup>177,180–184</sup> Few studies have reported ARGs in effluents from STs, alternative OWTWs and the receiving ground- and surface water.<sup>178,179,185–191</sup> However, all reported a strong abundance of ARGs, e.g., Tan et al.<sup>190</sup> found 441 ARGs relating to 26 antibiotic classes in STs, and the contribution to AMR abundance in the environment is highlighted.<sup>185,190,191</sup> For instance, Damashek et al.<sup>185</sup> reported samples with the highest abundance of ARGs in a watershed were associated with STs over discharges from centralised WWTWs or agricultural industry, highlighting the need for further research on the contribution of STs to AMR and associated antibiotics.

## **6.2 Approaches to reduce the impact of septic tank discharges to pharmaceutical concentrations in the environment**

The numbers of APIs detected above the PNEC in ST effluent and the receiving environment, highlighted the need for alternative approaches at some locations. Locations with low dilutions, a high density of STs, proximity to bathing waters or environmental protection zones, and where private drinking wells are being used need priority.

A large variety of secondary treatments and alternatives to STs exist that are known to increase API removal and are already in use at full-scale. Existing treatment options include infiltration fields, anaerobic or aerated constructed wetlands or packaged treatment plants.<sup>61,103,105,137,139</sup> Traditionally, ST discharges are treated by infiltration fields, which are easy to construct and can be added to existing STs, but require sufficient space and deep, permeable soils.<sup>47,51,58</sup> Although API concentrations are reduced through sorption and biodegradation in infiltration fields and underlying soil, discharges are still known to contribute to APIs in ground- and surface water.<sup>124,150,151</sup> Furthermore, they are not effective at locations

with a high water table or low soil permeability. Here, mound systems, sand filters or constructed wetlands can be used.<sup>49,59</sup> Constructed wetlands combine natural processes such as biodegradation, sorption and plant uptake,<sup>28,138,192</sup> are low in cost and require little maintenance,<sup>138</sup> whilst reducing API concentrations.<sup>103</sup> API removal can be further increased using aeration,<sup>103</sup> e.g., in aerated wetlands or packaged treatment plants. Packaged treatment plants are normally relatively small, but require electricity to operate, can be expensive and challenging to install or/and maintain, have higher operating costs than constructed wetlands, and can produce odour due to ventilation openings.<sup>55,193</sup> The operation costs, maintenance requirements and therefore increased responsibilities for individuals who manage them, increase the risk of these plants not working properly. For example, it was found during inspections that they were not switched on and therefore not operating as intended.<sup>48</sup> Overall, different decentralised wastewater treatment options exist that reduce API concentrations to various degrees and at varying costs.<sup>193</sup> There is no one size fits all approach, but rather the type of wastewater treatment should be decided for each individual site.

Alternatively, the impact of STs to API concentrations in the receiving environment might be reduced by targeting a reduction in their concentrations in influent wastewater, e.g., by improving pharmaceutical design towards more environmentally friendly compounds and optimising their delivery, changing prescribing practices and reducing pharmaceutical waste.<sup>194–198</sup> Environmentally informed “green” prescribing includes changes in medicine selection, use, and dosages.<sup>195,196,199</sup> For instance, diclofenac purchases were reduced in Swedish pharmacies when it was placed behind the counter due to its harmful effects on the environment.<sup>200</sup> For chiral APIs with racemic prescription, switching to enantiopure formulations with the less environmentally toxic enantiomer, when both enantiomers have equal effects on the human body, or by using the enantiomer that has more activity towards the desired therapeutic effect in humans over the

racemate can also reduce environmental impact.<sup>120</sup> Furthermore, non-pharmacological interventions, e.g., psychotherapy, exercises or physical therapy, could effectively reduce pharmaceutical use by simultaneously benefitting the patient.<sup>195,199</sup> One of the APIs frequently found above the PNEC was ibuprofen (Figure 6), hence over-the-counter purchases also need to be considered. Leftover or unwanted pharmaceuticals can enter the environment through landfill leachate<sup>40</sup> and direct down-the-drain disposal.<sup>120,201</sup> Potential direct disposal of antidepressants was previously observed in ST influent.<sup>120</sup> Hence, reducing the need for disposal by decreasing the number of unused pharmaceuticals, preventing waste by controlled reuse or redistribution programs, and encouraging safe disposal, can have a beneficial effect on environmental concentrations.<sup>197</sup> Since those efforts would be targeted towards a small population when considering OWTWs, they are expected to have a greater effect than in more densely populated areas. Deprescribing interventions successfully reduced the numbers of used pharmaceuticals, but are labour intensive,<sup>202,203</sup> and can therefore currently only be directed at small groups. The impact of localised prescription and population behaviour on API concentrations in STs used by smaller populations has previously been shown,<sup>69,88,106</sup> and rural communities have already been targeted in programmes to reduce APIs in the environment via upstream solutions.<sup>204</sup> Furthermore, barriers to environmentally informed prescribing, such as lack of knowledge, confidence, time and resources<sup>205</sup> could be more easily addressed at a local level when targeting fewer prescribers. Overall, upstream solutions, such as sustainable medicine use, have great potential of being successful for small populations that can be specifically targeted by interventions. Keeping ethical considerations and the protection of individuals in mind is essential when these interventions are established in small communities.

View Article Online  
DOI: 10.1039/D5EM00568J

### 6.3 Ethical considerations

View Article Online  
DOI: 10.1039/D5EM00568J

Considering the ethical implications of any work is important, but essential when working with small groups, or vulnerable individuals or groups. Wastewater data is usually collected without obtaining informed consent from the contributing population as wastewater is considered an environmental matrix and no information on individuals are acquired.<sup>206–210</sup> However, with the COVID-19 pandemic and the increasing use of wastewater based epidemiology for monitoring illicit drug use and pathogens, ethical concerns of wastewater surveillance have received increasing considerations.<sup>207,208,210,211</sup> Wastewater surveillance can generally be justified due its benefits to public health or the environment,<sup>209</sup> and analysing APIs in wastewater or the receiving aquatic environment does not usually raise privacy concerns as individuals cannot be identified when large populations are monitored.<sup>206,208</sup> However, special considerations need to be made when obtaining data related to small groups, e.g., from ST wastewater, or marginalised communities, as results could potentially have negative effects on individuals, e.g., through increased stigmatisation or the creation of adverse policies.<sup>206,208</sup>

Anonymising locations is an essential measure to protect individuals' privacy but might not be sufficient when small populations are monitored. The fewer people that use the ST, the more carefully ethical implications need to be considered. For instance, while anonymising locations for a community ST might be sufficient, informed consent should always be obtained before analysing APIs in household wastewater. The type of APIs selected for a study should also be carefully considered. Even the use of commonly prescribed pharmaceuticals, such as anti-depressants, is still stigmatised.<sup>212,213</sup> Analysing APIs that are taken without the knowledge of other household members or that are illegal in the area, e.g., the abortion medication mifepristone, might put individuals at risk when the use is revealed. Furthermore, study locations should be carefully selected, and implications for marginalised communities considered. For instance, the presence or

1  
2  
3  
4  
5  
6  
7  
8  
9  
10  
11  
12  
13  
14  
15  
16  
17  
18  
19  
20  
21  
22  
23  
24  
25  
26  
27  
28  
29  
30  
31  
32  
33  
34  
35  
36  
37  
38  
39  
40  
41  
42  
43  
44  
45  
46  
47  
48  
49  
50  
51  
52  
53  
54  
55  
56  
57  
58  
59  
60

Downloaded on 04/05/2026 12:41:13.  
This article is licensed under a Creative Commons Attribution 3.0 Unported Licence.



1  
2  
3 absence of HIV medications could further increase assumptions around the virus. It  
4 is always essential to evaluate the benefits of the study to public health or the  
5 environment, against the potential harm to individuals or small groups.  
6  
7  
8  
9

## 10 **7 Conclusion**

11 This review demonstrates the progress that has been made in understanding  
12 OWTWs as a pathway for APIs to the aquatic environment. Investigating APIs in  
13 OWTWs and their contribution to the aquatic environment poses several challenges,  
14 such as the high variability in API concentrations in wastewater from small  
15 communities and the difficulties associated with sampling influent, effluent and  
16 groundwater in rural locations. Further research on the detection and removal of a  
17 variety of APIs in OWTWs and their impact to ground- and surface water is needed.  
18 One priority in future should be to determine removal efficiencies in STs and  
19 alternative OWTWs by carefully selecting study design and sampling strategy. The  
20 high temporal and spatial variability need to be considered by sampling multiple  
21 OWTWs throughout the year. Available data suggests limited removal of APIs in  
22 STs, and a potential impact to surface and groundwater, indicated by  
23 concentrations exceeding the PNEC. Efforts towards sustainable medicine use and  
24 achieving greater API removal in OWTWs should be made.  
25  
26  
27  
28  
29  
30  
31  
32  
33  
34  
35  
36  
37  
38  
39  
40  
41  
42  
43  
44  
45  
46  
47  
48  
49  
50  
51  
52  
53  
54  
55  
56  
57  
58  
59  
60

## **Author contributions**

**Kai Wilschnack:** Writing – original draft, Visualization, Investigation, Formal analysis, Data curation, Conceptualization. **Elise Cartmell:** Writing – review & editing. **Kyari Yates:** Writing – review & editing, Supervision. **Bruce Petrie:** Writing – review & editing, Supervision, Project administration, Funding acquisition, Conceptualization.

## **Conflicts of interest**

There are no conflicts to declare.

## **Acknowledgements**



This work was funded by a joined studentship from Scottish Water and the Robert Gordon University. The authors wish to acknowledge Anna Baran, Sarah Gillman and Bess Homer for their contributions.

## References

- 1 Y. Li, M. A. Taggart, C. McKenzie, Z. Zhang, Y. Lu, S. Pap and S. W. Gibb, A SPE-HPLC-MS/MS method for the simultaneous determination of prioritised pharmaceuticals and EDCs with high environmental risk potential in freshwater, *J. Environ. Sci.*, 2021, **100**, 18–27.
- 2 European Commission, *Commission Implementing Decision (EU) 2018/840 of 5 June 2018 establishing a watch list of substances for Union-wide monitoring in the field of water policy pursuant to Directive 2008/105/EC of the European Parliament and of the Council and repealing Commission Implementing Decision (EU) 2015/495*, 2018, vol. 141.
- 3 M. Cleuvers, Aquatic ecotoxicity of pharmaceuticals including the assessment of combination effects, *Toxicol. Lett.*, 2003, **142**, 185–194.
- 4 European Commission, *Directive 2000/60/EC of the European Parliament and of the Council of 23 October 2000, establishing a framework for Community action in the field of water policy*, 2000.
- 5 L. H. M. L. M. Santos, A. N. Araújo, A. Fachini, A. Pena, C. Delerue-Matos and M. C. B. S. M. Montenegro, Ecotoxicological aspects related to the presence of pharmaceuticals in the aquatic environment, *J. Hazard. Mater.*, 2010, **175**, 45–95.
- 6 H. Darwano, S. V. Duy and S. Sauvé, A New Protocol for the Analysis of Pharmaceuticals, Pesticides, and Hormones in Sediments and Suspended Particulate Matter From Rivers and Municipal Wastewaters, *Arch. Environ. Contam. Toxicol.*, 2014, **66**, 582–593.
- 7 M. Scheurer, A. Michel, H.-J. Brauch, W. Ruck and F. Sacher, Occurrence and fate of the antidiabetic drug metformin and its metabolite guanylurea in the environment and during drinking water treatment, *Water Res.*, 2012, **46**, 4790–4802.
- 8 B. Petrie and C. F. Moffat, Occurrence and fate of chiral and achiral drugs in estuarine water – a case study of the Clyde Estuary, Scotland, *Environ. Sci.: Processes Impacts*, 2022, **24**, 547–556.
- 9 Z. Zhang, M. Lebleu, M. Osprey, C. Kerr and E. Courtot, Risk estimation and annual fluxes of emerging contaminants from a Scottish priority catchment to the estuary and North Sea, *Environ. Geochem. Health*, 2018, **40**, 1987–2005.
- 10 J. L. Wilkinson, A. B. A. Boxall, D. W. Kolpin, K. M. Y. Leung, R. W. S. Lai, C. Galbán-Malagón, A. D. Adell, J. Mondon, M. Metian, R. A. Marchant, A. Bouzas-Monroy, A. Cuni-Sanchez, A. Coors, P. Carriquiriborde, M. Rojo, C. Gordon, M. Cara, M. Moermond, T. Luarte, V. Petrosyan, Y. Perikhanyan, C. S. Mahon, C. J. McGurk, T. Hofmann, T. Kormoker, V. Iniguez, J. Guzman-Otazo, J. L. Tavares, F. G. D. Figueiredo, M. T. P. Razzolini, V. Dougnon, G. Gbaguidi, O. Traoré, J. M. Blais, L. E. Kimpe, M. Wong, D. Wong, R. Ntchantcho, J. Pizarro, G.-G. Ying, C.-E. Chen, M. Páez, J. Martínez-Lara, J.-P. Otamonga, J. Poté, S. A. Ifo, P. Wilson, S. Echeverría-Sáenz, N. Udikovic-Kolic, M. Milakovic, D. Fatta-Kassinou, L. Ioannou-Ttota, V. Belušová, J. Vymazal, M. Cárdenas-Bustamante, B. A. Kassa, J. Garric, A. Chaumot, P. Gibba, I. Kunchulia, S. Seidensticker, G. Lyberatos, H. P. Halldórsson, M. Melling, T. Shashidhar, M. Lamba, A. Nastiti, A. Supriatin, N. Pourang, A. Abedini, O. Abdullah, S. S. Gharbia, F. Pilla, B. Chefetz, T. Topaz, K. M. Yao, B. Aubakirova, R. Beisenova, L. Olaka, J. K. Mulu, P. Chatanga, V. Ntuli, N. T. Blama, S. Sherif, A. Z. Aris, L. J. Looi, M. Niang, S. T. Traore, R. Oldenkamp, O. Ogunbanwo, M. Ashfaq, M. Iqbal, Z. Abdeen, A.

- O'Dea, J. M. Morales-Saldaña, M. Custodio, H. de la Cruz, I. Navarrete, F. Carvalho, A. B. Gogra, B. M. Koroma, V. Cerkvenik-Flajs, M. Gombač, M. Thwala, K. Choi, H. Kang, J. L. C. Ladu, A. Rico, P. Amerasinghe, A. Sobek, G. Horlitz, A. K. Zenker, A. C. King, J.-J. Jiang, R. Kariuki, M. Tumbo, U. Tezel, T. T. Onay, J. B. Lejju, Y. Vystavna, Y. Vergeles, H. Heinzen, A. Pérez-Parada, D. B. Sims, M. Figy, D. Good, and Charles Teta, Pharmaceutical pollution of the world's rivers, *Proc. Natl. Acad. Sci.*, 2022, **119**, e2113947119.
- 11 E. E. Burns, L. J. Carter, D. W. Kolpin, J. Thomas-Oates and A. B. A. Boxall, Temporal and spatial variation in pharmaceutical concentrations in an urban river system, *Water Res.*, 2018, **137**, 72–85.
- 12 J. R. Peters and E. F. Granek, Long-term exposure to fluoxetine reduces growth and reproductive potential in the dominant rocky intertidal mussel, *Mytilus californianus*, *Sci. Total Environ.*, 2016, **545–546**, 621–628.
- 13 L. Bittner, E. Teixido, B. Seiwert, B. I. Escher and N. Klüver, Influence of pH on the uptake and toxicity of  $\beta$ -blockers in embryos of zebrafish, *Danio rerio*, *Aquat. Toxicol.*, 2018, **201**, 129–137.
- 14 A. Lange, Y. Katsu, R. Ichikawa, G. C. Paull, L. L. Chidgey, T. S. Coe, T. Iguchi and C. R. Tyler, Altered Sexual Development in Roach (*Rutilus rutilus*) Exposed to Environmental Concentrations of the Pharmaceutical 17 $\alpha$ -Ethinylestradiol and Associated Expression Dynamics of Aromatases and Estrogen Receptors, *Toxicol. Sci.*, 2008, **106**, 113–123.
- 15 J. Bengtsson-Palme and D. G. J. Larsson, Concentrations of antibiotics predicted to select for resistant bacteria: Proposed limits for environmental regulation, *Environ. Int.*, 2016, **86**, 140–149.
- 16 T. Backhaus, T. Porsbring, Å. Arrhenius, S. Brosche, P. Johansson and H. Blanck, Single-substance and mixture toxicity of five pharmaceuticals and personal care products to marine periphyton communities, *Environ. Toxicol. Chem.*, 2011, **30**, 2030–2040.
- 17 C. Di Poi, K. Costil, V. Bouchart and M.-P. Halm-Lemeille, Toxicity assessment of five emerging pollutants, alone and in binary or ternary mixtures, towards three aquatic organisms, *Environ. Sci. Pollut. Res.*, 2018, **25**, 6122–6134.
- 18 A. Bouzas-Monroy, J. L. Wilkinson, M. Melling and A. B. A. Boxall, Assessment of the Potential Ecotoxicological Effects of Pharmaceuticals in the World's Rivers, *Environ. Toxicol. Chem.*, 2022, **41**, 2008–2020.
- 19 European Commission, *Common Implementation Strategy for the Water Framework Directive and the Floods Directive: Voluntary Groundwater Watch List*, 2019.
- 20 European Commission, *Commission Implementing Decision (EU) 2022/1307 of 22 July 2022 establishing a watch list of substances for Union-wide monitoring in the field of water policy pursuant to Directive 2008/105/EC of the European Parliament and of the Council (notified under document C(2022) 5098)*, 2022.
- 21 UKWIR, *Ellor (Project Management, on behalf of UKWIR), B., Castle (Atkins, Author), G, Yates (Atkins, Author), C., The National Chemical Investigations Programme 2020-2022, Volume 5, Monitoring Substances of Emerging Concern*, UKWIR, 2023.
- 22 UKWIR, *Ellor (Project Management, on behalf of UKWIR), B., Gardner (Author), M. J., The National Chemical Investigations Programme 2015-2020, Volume 2, Monitoring Substances of Emerging Concern*, UKWIR, 2018.
- 23 European Commission, *Proposal for a DIRECTIVE OF THE EUROPEAN PARLIAMENT AND OF THE COUNCIL amending Directive 2000/60/EC establishing a framework for Community action in the field of water policy, Directive 2006/118/EC on the protection of groundwater against pollution and deterioration and Directive 2008/105/EC on environmental quality standards in the field of water policy (COM/2022/540 final)*, 2022.
- 24 European Commission, *Commission Implementing Decision (EU) 2025/439 of 28 February 2025 establishing a watch list of substances for Union-wide monitoring in the field of water policy pursuant to Directive 2008/105/EC of the*

- 1  
2  
3  
4  
5  
6  
7  
8  
9  
10  
11  
12  
13  
14  
15  
16  
17  
18  
19  
20  
21  
22  
23  
24  
25  
26  
27  
28  
29  
30  
31  
32  
33  
34  
35  
36  
37  
38  
39  
40  
41  
42  
43  
44  
45  
46  
47  
48  
49  
50  
51  
52  
53  
54  
55  
56  
57  
58  
59  
60
- European Parliament and of the Council (notified under document C(2025) 1244)*, 2025. View Article Online  
DOI: 10.1039/D5EM00568J
- 25 The Swiss Federal Council, *Waters Protection Ordinance 814.201. In German: Der Schweizerische Bundesrat. Gewässerschutzverordnung (GSchV)*, 2016.
- 26 O. Miarov, A. Tal and D. Avisar, A critical evaluation of comparative regulatory strategies for monitoring pharmaceuticals in recycled wastewater, *J. Environ. Manage.*, 2020, **254**, 109794.
- 27 European Commission, *Directive (EU) 2024/3019 of the European Parliament and of the Council of 27 November 2024 concerning urban wastewater treatment (recast)*, 2024.
- 28 Y. Li, G. Zhu, W. J. Ng and S. K. Tan, A review on removing pharmaceutical contaminants from wastewater by constructed wetlands: Design, performance and mechanism, *Sci. Total Environ.*, 2014, **468–469**, 908–932.
- 29 P. Verlicchi, M. Al Aukidy and E. Zambello, Occurrence of pharmaceutical compounds in urban wastewater: Removal, mass load and environmental risk after a secondary treatment—A review, *Sci. Total Environ.*, 2012, **429**, 123–155.
- 30 S. Comber, M. Gardner, P. Sörme and B. Ellor, The removal of pharmaceuticals during wastewater treatment: Can it be predicted accurately?, *Sci. Total Environ.*, 2019, **676**, 222–230.
- 31 E. Sanganyado, Z. Lu, Q. Fu, D. Schlenk and J. Gan, Chiral pharmaceuticals: A review on their environmental occurrence and fate processes, *Water Res.*, 2017, **124**, 527–542.
- 32 S. Evans, J. Bagnall and B. Kasprzyk-Hordern, Enantiomeric profiling of a chemically diverse mixture of chiral pharmaceuticals in urban water, *Environ. Pollut.*, 2017, **230**, 368–377.
- 33 S. J. Khan, L. Wang, N. H. Hashim and J. A. McDonald, Distinct Enantiomeric Signals of Ibuprofen and Naproxen in Treated Wastewater and Sewer Overflow, *Chirality*, 2014, **26**, 739–746.
- 34 A. Pérez-Pereira, J. S. Carrola, M. E. Tiritan and C. Ribeiro, Enantioselectivity in ecotoxicity of pharmaceuticals, illicit drugs, and industrial persistent pollutants in aquatic and terrestrial environments: A review, *Science of The Total Environment*, 2024, **912**, 169573.
- 35 F. Cui, Y. Zhu, S. Di, X. Wang, Y. Zhang and T. Chai, Toxicological Study on Chiral Fluoxetine Exposure to Adult Zebrafish (*Danio rerio*): Enantioselective and Sexual Mechanism on Disruption of the Brain Serotonergic System, *Environ. Sci. Technol.*, 2021, **55**, 7479–7490.
- 36 S. Comber, M. Gardner, P. Sörme, D. Leverett and B. Ellor, Active pharmaceutical ingredients entering the aquatic environment from wastewater treatment works: A cause for concern?, *Sci. Total Environ.*, 2018, **613–614**, 538–547.
- 37 K. Munro, C. P. B. Martins, M. Loewenthal, S. Comber, D. A. Cowan, L. Pereira and L. P. Barron, Evaluation of combined sewer overflow impacts on short-term pharmaceutical and illicit drug occurrence in a heavily urbanised tidal river catchment (London, UK), *Sci. Total Environ.*, 2019, **657**, 1099–1111.
- 38 L. Niemi, M. Taggart, K. Boyd, Z. Zhang, P. P. J. Gaffney, S. Pflieger and S. Gibb, Assessing hospital impact on pharmaceutical levels in a rural 'source-to-sink' water system, *Sci. Total Environ.*, 2020, **737**, 139618.
- 39 H. Xie, H. Hao, N. Xu, X. Liang, D. Gao, Y. Xu, Y. Gao, H. Tao and M. Wong, Pharmaceuticals and personal care products in water, sediments, aquatic organisms, and fish feeds in the Pearl River Delta: Occurrence, distribution, potential sources, and health risk assessment, *Sci. Total Environ.*, 2019, **659**, 230–239.
- 40 X. Yu, Q. Sui, S. Lyu, W. Zhao, J. Liu, Z. Cai, G. Yu and D. Barcelo, Municipal Solid Waste Landfills: An Underestimated Source of Pharmaceutical and Personal Care Products in the Water Environment, *Environ. Sci. Technol.*, 2020, **54**, 9757–9768.



- 1  
2  
3  
4  
5  
6  
7  
8  
9  
10  
11  
12  
13  
14  
15  
16  
17  
18  
19  
20  
21  
22  
23  
24  
25  
26  
27  
28  
29  
30  
31  
32  
33  
34  
35  
36  
37  
38  
39  
40  
41 B. Petrie, R. Barden and B. Kasprzyk-Hordern, A review on emerging contaminants in wastewaters and the environment: Current knowledge, understudied areas and recommendations for future monitoring, *Water Res.*, 2015, **72**, 3–27.
- 42 D. White, D. J. Lapworth, W. Civil and P. Williams, Tracking changes in the occurrence and source of pharmaceuticals within the River Thames, UK; from source to sea, *Environ. Pollut.*, 2019, **249**, 257–266.
- 43 M. Gros, M. Petrović and D. Barceló, Development of a multi-residue analytical methodology based on liquid chromatography–tandem mass spectrometry (LC–MS/MS) for screening and trace level determination of pharmaceuticals in surface and wastewaters, *Talanta*, 2006, **70**, 678–690.
- 44 K. Proctor, B. Petrie, R. Barden, T. Arnot and B. Kasprzyk-Hordern, Multi-residue ultra-performance liquid chromatography coupled with tandem mass spectrometry method for comprehensive multi-class anthropogenic compounds of emerging concern analysis in a catchment-based exposure-driven study, *Anal. Bioanal. Chem.*, 2019, **411**, 7061–7086.
- 45 D. R. Baker and B. Kasprzyk-Hordern, Multi-residue determination of the sorption of illicit drugs and pharmaceuticals to wastewater suspended particulate matter using pressurised liquid extraction, solid phase extraction and liquid chromatography coupled with tandem mass spectrometry, *J. Chromatogr. A*, 2011, **1218**, 7901–7913.
- 46 Q. Gao, K. M. Blum, P. Gago-Ferrero, K. Wiberg, L. Ahrens and P. L. Andersson, Impact of on-site wastewater infiltration systems on organic contaminants in groundwater and recipient waters, *Sci. Total Environ.*, 2019, **651**, 1670–1679.
- 47 M. A. Massoud, A. Tarhini and J. A. Nasr, Decentralized approaches to wastewater treatment and management: Applicability in developing countries, *J. Environ. Manage.*, 2009, **90**, 652–659.
- 48 I. Akoumianaki and A. Ibiyemi, *Understanding problems associated with small-scale Private Sewage Systems (PSS) from regulators' perspectives. Scotland's Centre of Expertise for Waters (CREW) project 2020/07.* [https://www.crew.ac.uk/publication/private\\_sewage\\_systems](https://www.crew.ac.uk/publication/private_sewage_systems), 2022.
- 49 L. A. Schaider, K. M. Rodgers and R. A. Rudel, Review of Organic Wastewater Compound Concentrations and Removal in Onsite Wastewater Treatment Systems, *Environ. Sci. Technol.*, 2017, **51**, 7304–7317.
- 50 P. Bugajski, A. Operacz, D. Młyński, A. Wałęga and K. Kurek, Optimizing Treatment of Cesspool Wastewater at an Activated Sludge Plant, *Sustainability*, 2020, **12**, 10196.
- 51 D. Butler and J. Payne, Septic tanks: Problems and practice, *Build. Environ.*, 1995, **30**, 419–425.
- 52 S. Richards, E. Paterson, P. J. A. Withers and M. Stutter, Septic tank discharges as multi-pollutant hotspots in catchments, *Sci. Total Environ.*, 2016, **542**, 854–863.
- 53 L. Gill, J. Mac Mahon, J. Knappe, S. Gharbia and F. Pilla, *Desludging Rates and Mechanisms for Domestic Wastewater Treatment System Sludges in Ireland (2016-W-DS-26)*, Environmental Protection Agency, Dublin, 2018.
- 54 L. Keshtgar, A. Rostami, A. A. Azimi, M. Dehghani and S. Ataollahi, The impact of barrier walls (baffle) on performance of septic tanks in domestic wastewater treatment, *Desalination Water Treat.*, 2019, **161**, 254–259.
- 55 K. Ramsay, A. Escudero, G. Frascaroli, F. Henderson and K. Helwig, *Guidance on Small Sewage Systems in Scotland. Scotland's Centre of Expertise for Waters (CREW) project 2019/08.* <https://www.crew.ac.uk/publication/international-policy-review-small-sewage-systems>, 2022.
- 56 D. Dubber and L. Gill, Application of On-Site Wastewater Treatment in Ireland and Perspectives on Its Sustainability, *Sustainability*, 2014, **6**, 1623–1642.
- 57 D. Li, X. Wang, L. Chi and J. Wang, The design and operation of subsurface wastewater infiltration systems for domestic wastewater, *Water Environ. Res.*, 2019, **91**, 843–854.

- 1  
2  
3  
4  
5  
6  
7  
8  
9  
10  
11  
12  
13  
14  
15  
16  
17  
18  
19  
20  
21  
22  
23  
24  
25  
26  
27  
28  
29  
30  
31  
32  
33  
34  
35  
36  
37  
38  
39  
40  
41  
42  
43  
44  
45  
46  
47  
48  
49  
50  
51  
52  
53  
54  
55  
56  
57  
58  
59  
60
- 58 L. Dawes and A. Goonetilleke, An Investigation into the role of site and soil characteristics in onsite sewage treatment, *Env Geol*, 2003, **44**, 467–477. View Article Online  
DOI: 10.1039/D5EM00568J
- 59 J. O’Keeffe, J. Akunna, J. Olszewska, A. Bruce, L. May and R. Allan, *Practical measures for reducing phosphorus and faecal microbial loads from onsite wastewater treatment system discharges to the environment: A review. Centre of Expertise for Waters (CREW) <https://www.crew.ac.uk/publication/reducing-phosphorus-faecal-loads-owts>*, 2015.
- 60 C. Abegglen, A. Joss, C. S. McArdell, G. Fink, M. P. Schlüsener, T. A. Ternes and H. Siegrist, The fate of selected micropollutants in a single-house MBR, *Water Res.*, 2009, **43**, 2036–2046.
- 61 K. M. Blum, P. L. Andersson, G. Renman, L. Ahrens, M. Gros, K. Wiberg and P. Haglund, Non-target screening and prioritization of potentially persistent, bioaccumulating and toxic domestic wastewater contaminants and their removal in on-site and large-scale sewage treatment plants, *Sci. Total Environ.*, 2017, **575**, 265–275.
- 62 S. N. Garcia, R. L. Clubbs, J. K. Stanley, B. Scheffe, J. C. Yelderman and B. W. Brooks, Comparative analysis of effluent water quality from a municipal treatment plant and two on-site wastewater treatment systems, *Chemosphere*, 2013, **92**, 38–44.
- 63 Statistisches Bundesamt, Water management: Public sewage systems. In German: Wasserwirtschaft: Gemeinden mit öffentlicher und privater Abwasserentsorgung - Öffentliche Abwasserentsorgung nach Ländern 2019, last accessed 24/01/2025., <https://www.destatis.de/DE/Themen/Gesellschaft-Umwelt/Umwelt/Wasserwirtschaft/Tabellen/ww-02-abwasserentsorgung-2019.html>.
- 64 UK Government, Septic tanks and sewage treatment plants: permits and general binding rules. [www.gov.uk](http://www.gov.uk), last accessed 15/10/2024., <https://www.gov.uk/permits-you-need-for-septic-tanks>, (accessed 7 January 2021).
- 65 H. Ejhed, J. Fång, K. Hansen, L. Graae, M. Rahmberg, J. Magnér, E. Dorgeloh and G. Plaza, The effect of hydraulic retention time in onsite wastewater treatment and removal of pharmaceuticals, hormones and phenolic utility substances, *Sci. Total Environ.*, 2018, **618**, 250–261.
- 66 V. Matamoros, Y. Rodríguez and J. Albaigés, A comparative assessment of intensive and extensive wastewater treatment technologies for removing emerging contaminants in small communities, *Water Res.*, 2016, **88**, 777–785.
- 67 J. A. Oppenheimer, M. Badruzzaman and J. G. Jacangelo, Differentiating sources of anthropogenic loading to impaired water bodies utilizing ratios of sucralose and other microconstituents, *Water Res.*, 2012, **46**, 5904–5916.
- 68 Scottish Government., in *Technical Handbook - Domestic 2020*, 2020, pp. 164–174.
- 69 K. Wilschnack, E. Cartmell, K. Yates and B. Petrie, Septic tanks as a pathway for emerging contaminants to the aquatic environment–Need for alternative rural wastewater treatment?, *Environ. Pollut.*, 2024, **362**, 124988.
- 70 Department for Environment, Food & Rural Affairs, *Policy paper: General binding rules for small sewage discharges (SSDs) with effect from January 2015. <https://www.gov.uk/government/publications/small-sewage-discharges-in-england-the-general-binding-rules>. Guidance for the registration of small sewage effluent discharges Accessed Feb 2023*, 2015.
- 71 Scottish Water, Byelaws & Trade Effluent - Trade Effluent - What is Trade Effluent?, last accessed 21/11/2024., <https://www.scottishwater.co.uk/Business-and-Developers/Byelaws-and-Trade-Effluent/Trade-Effluent>, (accessed 21 November 2024).
- 72 C. A. Yates, P. J. Johnes and R. G. M. Spencer, Characterisation of treated effluent from four commonly employed wastewater treatment facilities: A UK case study, *J. Environ. Manage.*, 2019, **232**, 919–927.

- 1  
2  
3  
4  
5  
6  
7  
8  
9  
10  
11  
12  
13  
14  
15  
16  
17  
18  
19  
20  
21  
22  
23  
24  
25  
26  
27  
28  
29  
30  
31  
32  
33  
34  
35  
36  
37  
38  
39  
40  
41  
42  
43  
44  
45  
46  
47  
48  
49  
50  
51  
52  
53  
54  
55  
56  
57  
58  
59  
60
- 73 D. McKibbin, *The use of onsite wastewater treatment systems in Northern Ireland in Providing research and information services to the Northern Ireland Assembly (NIAR 585-15, Paper 110/15)*, 2015.
- 74 B. Du, A. E. Price, W. C. Scott, L. A. Kristofco, A. J. Ramirez, C. K. Chambliss, J. C. Yelderman and B. W. Brooks, Comparison of contaminants of emerging concern removal, discharge, and water quality hazards among centralized and on-site wastewater treatment system effluents receiving common wastewater influent, *Sci. Total Environ.*, 2014, **466–467**, 976–984.
- 75 W. J. Brownlie, B. Spears, S. Patidar, M. Linda and S. Roaf, Assessing Pro-environmental Behaviour in Relation to the Management of Pollution from Private Sewage Systems, *Hum. Ecol.*, 2015, **43**, 131–140.
- 76 K. Conaway, S. Lebu, K. Heilferty, A. Salzberg and M. Manga, On-site sanitation system emptying practices and influential factors in Asian low- and middle-income countries: A systematic review, *Hyg. Environ. Health Advances*, 2023, **6**, 100050.
- 77 J. Moonkawin, L. T. Huynh, M. Y. Schneider, S. Fujii, S. Echigo, L. P. H. Nguyen, T.-H. T. Hoang, H. T. Huynh and H. Harada, Challenges to Accurate Estimation of Methane Emission from Septic Tanks with Long Emptying Intervals, *Environ. Sci. Technol.*, 2023, **57**, 16575–16584.
- 78 P. J. A. Withers, L. May, H. P. Jarvie, P. Jordan, D. Doody, R. H. Foy, M. Bechmann, S. Cooksley, R. Dils and N. Deal, Nutrient emissions to water from septic tank systems in rural catchments: Uncertainties and implications for policy, *Environ. Sci. Policy*, 2012, **24**, 71–82.
- 79 M. G. Lusk, G. S. Toor, Y.-Y. Yang, S. Mechtensimer, M. De and T. A. Obreza, A review of the fate and transport of nitrogen, phosphorus, pathogens, and trace organic chemicals in septic systems, *Crit. Rev. Environ. Sci. Technol.*, 2017, **47**, 455–541.
- 80 M. Sharma, A. Yadav, K. K. Dubey, J. Tipple and D. B. Das, Decentralized systems for the treatment of antimicrobial compounds released from hospital aquatic wastes, *Sci. Total Environ.*, 2022, **840**, 156569.
- 81 W. K. Wardhani, E. S. Soedjono, H. S. Titah and M. A. Mardiyanto, Pharmaceutical emerging micropollutants potential in septic tanks: Its fate and transport study in Indonesia – A literature review, *Environ. Qual. Manag.*, 2024, **34**, e22176.
- 82 R. Gyimah, S. Lebu, I. Owusu-Frimpong, S. Semiyaga, A. Salzberg and M. Manga, Effluents from septic systems and impact on groundwater contamination: a systematic review, *Environ. Sci. Pollut. Res.*, 2024, **31**, 62655–62675.
- 83 X. Cheng, X. Jiang, L. Liu and J. Huang, Analysis of Emerging Contaminants in Surface Water, Aquaculture Ponds and Wastewater Treatment Facilities in the Taige Canal Basin, *Chem. Res. Chin. Univ.*, 2023, **39**, 516–524.
- 84 M. Digaletos, C. J. Ptacek, J. Thomas and Y. Liu, Chemical and biological tracers to identify source and transport pathways of septic system contamination to streams in areas with low permeability soils, *Sci. Total Environ.*, 2023, **870**, 161866.
- 85 D. Dubber, L. Brophy, D. O’Connell, P. Behan, M. Danaher, C. Evans, P. Geary, B. Misstear and L. Gill, The use of sterol profiles, supported with other faecal source tracking methods, to apportion septic tanks contamination in rural catchments, *Environ. Pollut.*, 2024, **341**, 122884.
- 86 F. A. Kibuye, H. E. Gall, K. R. Elkin, B. Swistock, T. L. Veith, J. E. Watson and H. A. Elliott, Occurrence, Concentrations, and Risks of Pharmaceutical Compounds in Private Wells in Central Pennsylvania, *J. Environ. Qual.*, 2019, **48**, 1057–1066.
- 87 S. Ramage, D. Camacho-Muñoz and B. Petrie, Enantioselective LC-MS/MS for anthropogenic markers of septic tank discharge, *Chemosphere*, 2019, **219**, 191–201.

- 1  
2  
3  
4  
5  
6  
7  
8  
9  
10  
11  
12  
13  
14  
15  
16  
17  
18  
19  
20  
21  
22  
23  
24  
25  
26  
27  
28  
29  
30  
31  
32  
33  
34  
35  
36  
37  
38  
39  
40  
41  
42  
43  
44  
45  
46  
47  
48  
49  
50  
51  
52  
53  
54  
55  
56  
57  
58  
59  
60
- 88 M. Rivadulla, M. Lois, A. X. Elena, S. Balboa, S. Suarez, T. U. Berendonk, J. L. Romalde, J. M. Garrido and F. Omil, Occurrence and fate of CECs (OMPs, ARGs and pathogens) during decentralised treatment of black water and grey water, *Sci. Total Environ.*, 2024, **915**, 169863. View Article Online  
DOI: 10.1039/D5EM00568J
- 89 R. Rossetto, C. Marchina and L. Ercoli, Onsite wastewater treatment systems are a major source of pharmaceutical products in surface water of peri-urban/rural areas, *City Environ. Interac.*, 2024, **21**, 100140.
- 90 S. R. Hinkle, R. J. Weick, J. M. Johnson, J. D. Cahill, S. G. Smith and B. J. Rich, Scientific Investigations Report 2005–5055: Organic Wastewater Compounds, Pharmaceuticals, and Coliphage in Ground Water Receiving Discharge from Onsite Wastewater Treatment Systems near La Pine, Oregon: Occurrence and Implications for Transport, <https://pubs.usgs.gov/sir/2005/5055/>, (accessed 22 October 2024).
- 91 H. Rapp-Wright, F. Regan, B. White and L. P. Barron, A year-long study of the occurrence and risk of over 140 contaminants of emerging concern in wastewater influent, effluent and receiving waters in the Republic of Ireland, *Sci. Total Environ.*, 2023, **860**, 160379.
- 92 R Core Team, R: A Language and Environment for Statistical Computing, *R Foundation for Statistical Computing*.
- 93 Posit team, RStudio: Integrated Development Environment for R, *Posit Software, PBC*.
- 94 H. Wickham, F. Romain, L. Henry, K. Müller and D. Vaughan, dplyr: A Grammar of Data Manipulation, R package version 1.1.3.
- 95 P. Schaubberger and A. Walker, openxlsx: Read, Write and Edit xlsx Files, R package version 4.2.5.2.
- 96 H. Wickham and J. Bryan, readxl: Read Excel Files, R package version 1.4.3.
- 97 H. Wickham, M. Averick, J. Bryan, W. Chang, L. D'Agostino McGowan, R. François, G. Golemund, A. Hayes, L. Henry, J. Hester, M. Kuhn, T. L. Pedersen, E. Miller, S. Milton Bache, K. Müller, J. Ooms, D. Robinson, D. P. Seidel, V. Spinu, K. Takahashi, D. Vaughan, C. Wilke, K. M. Joseph and H. Yutan, Welcome to the tidyverse, *Journal of Open Source Software*, 2019, **4**, 1686.
- 98 A. Kassambara, rstatix: Pipe-Friendly Framework for Basic Statistical Tests, R package version 0.7.2.
- 99 H. Wickham, ggplot2: Elegant Graphics for Data Analysis. Springer-Verlag New York.
- 100 L. Pedersen, patchwork: The Composer of Plots, R package version 1.1.3.
- 101 QGIS Development Team, QGIS\_software, QGIS Geographic Information System, *Open Source Geospatial Foundation*.
- 102 TechGEO.org, Download World Map Shapefile, GeoJSON and KML Format free - TechGEO Mapping, last accessed 12/05/2025., <https://techgeo.org/download-world-map-shapefile-kml/>, (accessed 16 May 2025).
- 103 C. Ávila, M. J. García-Galán, E. Uggetti, N. Montemurro, M. García-Vara, S. Pérez, J. García and C. Postigo, Boosting pharmaceutical removal through aeration in constructed wetlands, *J. Hazard. Mater.*, 2021, **412**, 125231.
- 104 C. Carrara, C. J. Ptacek, W. D. Robertson, D. W. Blowes, M. C. Moncur, E. Sverko and S. Backus, Fate of Pharmaceutical and Trace Organic Compounds in Three Septic System Plumes, Ontario, Canada, *Environ. Sci. Technol.*, 2008, **42**, 2805–2811.
- 105 P. M. Clyde, C.-S. Lee, R. E. Price, A. K. Venkatesan and B. J. Brownawell, Occurrence and removal of PPCPs from on-site wastewater using nitrogen removing biofilters, *Water Res.*, 2021, **206**, 117743.
- 106 B. D. Stanford and H. S. Weinberg, Evaluation of On-Site Wastewater Treatment Technology to Remove Estrogens, Nonylphenols, and Estrogenic Activity from Wastewater, *Environ. Sci. Technol.*, 2010, **44**, 2994–3001.
- 107 K. E. Conn, K. S. Lowe, J. E. Drewes, C. Hoppe-Jones and M. B. Tucholke, Occurrence of Pharmaceuticals and Consumer Product Chemicals in Raw

- Wastewater and Septic Tank Effluent from Single-Family Homes, *Environ. Eng. Sci.*, 2010, **27**, 347–356. View Article Online  
DOI: 10.1039/D5EM00568J
- 108N. Mladenov, N. G. Dodder, L. Steinberg, W. Richardot, J. Johnson, B. S. Martincigh, C. Buckley, T. Lawrence and E. Hoh, Persistence and removal of trace organic compounds in centralized and decentralized wastewater treatment systems, *Chemosphere*, 2022, **286**, 131621.
- 109R. Kafaei, F. Papari, M. Seyedabadi, S. Sahebi, R. Tahmasebi, M. Ahmadi, G. A. Sorial, G. Asgari and B. Ramavandi, Occurrence, distribution, and potential sources of antibiotics pollution in the water-sediment of the northern coastline of the Persian Gulf, Iran, *Sci. Total Environ.*, 2018, **627**, 703–712.
- 110J. Späth, P. Arumugam, R. H. Lindberg, O. A. Abafe, S. Jansson, J. Fick and C. A. Buckley, Biochar for the removal of detected micropollutants in South African domestic wastewater: a case study from a demonstration-scale decentralised wastewater treatment system in eThekweni, *Water SA*.
- 111K. Wilschnack, B. Homer, E. Cartmell, K. Yates and B. Petrie, Targeted multi-analyte UHPLC-MS/MS methodology for emerging contaminants in septic tank wastewater, sludge and receiving surface water, *Anal. Methods*, 2024, **16**, 709–720.
- 112J. P. R. De Vargas, M. C. Bastos, M. Al Badany, R. Gonzalez, D. Wolff, D. R. D. Santos and J. Labanowski, Pharmaceutical compound removal efficiency by a small constructed wetland located in south Brazil, *Environ. Sci. Pollut. Res.*, 2021, **28**, 30955–30974.
- 113Scottish Government, Directorate: Local Government and Housing Directorate, 2020.
- 114H. Auvinen, I. Havran, L. Hubau, L. Vanseveren, W. Gebhardt, V. Linnemann, D. Van Oirschot, G. Du Laing and D. P. L. Rousseau, Removal of pharmaceuticals by a pilot aerated sub-surface flow constructed wetland treating municipal and hospital wastewater, *Ecol. Eng.*, 2017, **100**, 157–164.
- 115Y.-M. Kang, M.-K. Kim, T. Kim, T.-K. Kim and K.-D. Zoh, Occurrence and Fate of Micropollutants in Private Wastewater Treatment Facility (WTF) and Their Impact on Receiving Water, *Environ. Manage.*, 2019, **64**, 650–660.
- 116N. Le-Minh, H. M. Coleman, S. J. Khan, Y. van Luer, T. T. T. Trang, G. Watkins and R. M. Stuetz, The application of membrane bioreactors as decentralised systems for removal of endocrine disrupting chemicals and pharmaceuticals, *Water Sci. Technol.*, 2010, **61**, 1081–1088.
- 117P. J. Phillips, C. Schubert, D. Argue, I. Fisher, E. T. Furlong, W. Foreman, J. Gray and A. Chalmers, Concentrations of hormones, pharmaceuticals and other micropollutants in groundwater affected by septic systems in New England and New York, *Sci. Total Environ.*, 2015, **512–513**, 43–54.
- 118Z. Tang, Z. Liu, H. Wang, Z. Dang and Y. Liu, Occurrence and removal of 17 $\alpha$ -ethynylestradiol (EE2) in municipal wastewater treatment plants: Current status and challenges, *Chemosphere*, 2021, **271**, 129551.
- 119J. Teerlink, A. S. Hering, C. P. Higgins and J. E. Drewes, Variability of trace organic chemical concentrations in raw wastewater at three distinct sewershed scales, *Water Res.*, 2012, **46**, 3261–3271.
- 120K. Wilschnack, E. Cartmell, V. J. Sundström, K. Yates and B. Petrie, Enantiomeric fraction evaluation for assessing septic tanks as a pathway for chiral pharmaceuticals entering rivers, *Environ. Sci.: Processes Impacts*, 2025, **27**, 779–793.
- 121R. Wu, E. Y. Sin, K. Zhang, S. Xu, Y. Ruan, Y. L. Mak, Y. Yung, S. W. Sun, R. Yang and P. K. S. Lam, Medicating the coast in a metropolitan city: Enantiomeric profiles and joint probabilistic risk assessment of antidepressants and antihistamines, *Environ. Int.*, 2024, **184**, 108434.
- 122NORMAN Ecotoxicology Database, NORMAN Ecotoxicology Database - Lowest PNECs, last accessed 13/12/2023., <https://www.norman-network.com/nds/ecotox/lowestPnecsIndex.php>.



- 1  
2  
3  
4  
5  
6  
7  
8  
9  
10  
11  
12  
13  
14  
15  
16  
17  
18  
19  
20  
21  
22  
23  
24  
25  
26  
27  
28  
29  
30  
31  
32  
33  
34  
35  
36  
37  
38  
39  
40  
41  
42  
43  
44  
45  
46  
47  
48  
49  
50  
51  
52  
53  
54  
55  
56  
57  
58  
59  
60
- 123Y. Yang, X. Zhang, J. Jiang, J. Han, W. Li, X. Li, K. M. Yee Leung, S. A. Snyder and P. J. J. Alvarez, Which Micropollutants in Water Environments Deserve More Attention Globally?, *Environ. Sci. Technol.*, 2022, **56**, 13–29.
- 124Y.-Y. Yang, G. S. Toor, P. C. Wilson and C. F. Williams, Micropollutants in groundwater from septic systems: Transformations, transport mechanisms, and human health risk assessment, *Water Res.*, 2017, **123**, 258–267.
- 125S. Nakagawa, H. Matsuo, M. Motoyama, K. Nomiyama and R. Shinohara, Behavior of Endocrine Disrupting Chemicals in Johkasou Improved Septic Tank in Japan, *Bull. Environ. Contam. Toxicol.*, 2009, **83**, 328–333.
- 126S. Aydın, A. Ulvi, F. Bedük and M. E. Aydın, Pharmaceutical residues in digested sewage sludge: Occurrence, seasonal variation and risk assessment for soil, *Sci. Total Environ.*, 2022, **817**, 152864.
- 127H. Lin, H. Li, L. Chen, L. Li, L. Yin, H. Lee and Z. Yang, Mass loading and emission of thirty-seven pharmaceuticals in a typical municipal wastewater treatment plant in Hunan Province, Southern China, *Ecotoxicol. Environ. Saf.*, 2018, **147**, 530–536.
- 128V. Fernández-Fernández, M. Ramil and I. Rodríguez, Basic micro-pollutants in sludge from municipal wastewater treatment plants in the Northwest Spain: Occurrence and risk assessment of sludge disposal, *Chemosphere*, 2023, **335**, 139094.
- 129C. Mejías, J. Martín, J. L. Santos, I. Aparicio and E. Alonso, Occurrence of pharmaceuticals and their metabolites in sewage sludge and soil: A review on their distribution and environmental risk assessment, *Trends Environ. Anal. Chem.*, 2021, **30**, e00125.
- 130J. L. Malvar, J. L. Santos, J. Martín, I. Aparicio and E. Alonso, Comparison of ultrasound-assisted extraction, QuEChERS and selective pressurized liquid extraction for the determination of metabolites of parabens and pharmaceuticals in sludge, *Microchem. J.*, 2020, **157**, 104987.
- 131I. L. Costa Junior, C. S. Machado, A. L. Pletsch and Y. R. Torres, Sorption and desorption behavior of residual antidepressants and caffeine in freshwater sediment and sewage sludge, *Int. J. Sediment Res.*, 2022, **37**, 346–354.
- 132D. R. Baker and B. Kasprzyk-Hordern, Spatial and temporal occurrence of pharmaceuticals and illicit drugs in the aqueous environment and during wastewater treatment: New developments, *Sci. Total Environ.*, 2013, **454–455**, 442–456.
- 133B. Subedi and K. Kannan, Occurrence and fate of select psychoactive pharmaceuticals and antihypertensives in two wastewater treatment plants in New York State, USA, *Sci. Total Environ.*, 2015, **514**, 273–280.
- 134M. Ashfaq, Y. Li, Y. Wang, W. Chen, H. Wang, X. Chen, W. Wu, Z. Huang, C.-P. Yu and Q. Sun, Occurrence, fate, and mass balance of different classes of pharmaceuticals and personal care products in an anaerobic-anoxic-oxic wastewater treatment plant in Xiamen, China, *Water Res.*, 2017, **123**, 655–667.
- 135F. Polesel, K. Lehnberg, W. Dott, S. Trapp, K. V. Thomas and B. Gy. Plósz, Factors influencing sorption of ciprofloxacin onto activated sludge: Experimental assessment and modelling implications, *Chemosphere*, 2015, **119**, 105–111.
- 136Y. Xu, X. Yu, B. Xu, D. Peng and X. Guo, Sorption of pharmaceuticals and personal care products on soil and soil components: Influencing factors and mechanisms, *Sci. Total Environ.*, 2021, **753**, 141891.
- 137C. J. Gobler, S. Waugh, C. Asato, P. M. Clyde, S. C. Nyer, M. Graffam, B. Brownawell, A. K. Venkatesan, J. A. Goleski, R. E. Price, X. Mao, F. M. Russo, G. Heufelder and H. W. Walker, Removing 80%–90% of nitrogen and organic contaminants with three distinct passive, lignocellulose-based on-site septic systems receiving municipal and residential wastewater, *Ecol. Eng.*, 2021, **161**, 106157.
- 138R. Guedes-Alonso, S. Montesdeoca-Esponda, J. A. Herrera-Melián, R. Rodríguez-Rodríguez, Z. Ojeda-González, V. Landívar-Andrade, Z. Sosa-Ferrera



- and J. J. Santana-Rodríguez, Pharmaceutical and personal care product residues in a macrophyte pond-constructed wetland treating wastewater from a university campus: Presence, removal and ecological risk assessment, *Sci. Total Environ.*, 2020, **703**, 135596. Open Access Article Online  
DOI: 10.1039/D5EM00568J
- 139V. Matamoros, C. Arias, H. Brix and J. M. Bayona, Preliminary screening of small-scale domestic wastewater treatment systems for removal of pharmaceutical and personal care products, *Water Res.*, 2009, **43**, 55–62.
- 140J. D. Wilcox, J. M. Bahr, C. J. Hedman, J. D. C. Hemming, M. A. E. Barman and K. R. Bradbury, Removal of Organic Wastewater Contaminants in Septic Systems Using Advanced Treatment Technologies, *J. Environ. Qual.*, 2009, **38**, 149–156.
- 141W. Lin, Z. Huang, S. Gao, Z. Luo, W. An, P. Li, S. Ping and Y. Ren, Evaluating the stability of prescription drugs in municipal wastewater and sewers based on wastewater-based epidemiology, *Sci. Total Environ.*, 2021, **754**, 142414.
- 142M. B. Ahmed, J. L. Zhou, H. H. Ngo, W. Guo, N. S. Thomaidis and J. Xu, Progress in the biological and chemical treatment technologies for emerging contaminant removal from wastewater: A critical review, *J. Hazard. Mater.*, 2017, **323**, 274–298.
- 143P. Falås, A. Wick, S. Castronovo, J. Habermacher, T. A. Ternes and A. Joss, Tracing the limits of organic micropollutant removal in biological wastewater treatment, *Water Res.*, 2016, **95**, 240–249.
- 144M. Arenas, J. Martín, J. L. Santos, I. Aparicio and E. Alonso, Enantioselective behavior of environmental chiral pollutants: A comprehensive review, *Crit. Rev. Environ. Sci. Technol.*, 2022, **52**, 2995–3034.
- 145S. L. MacLeod, P. Sudhir and C. S. Wong, Stereoisomer analysis of wastewater-derived  $\beta$ -blockers, selective serotonin re-uptake inhibitors, and salbutamol by high-performance liquid chromatography–tandem mass spectrometry, *J. Chromatogr. A*, 2007, **1170**, 23–33.
- 146R. A. Brewton, L. B. Kreiger, K. N. Tyre, D. Baladi, L. E. Wilking, L. W. Herren and B. E. Lapointe, Septic system–groundwater–surface water couplings in waterfront communities contribute to harmful algal blooms in Southwest Florida, *Sci. Total Environ.*, 2022, **837**, 155319.
- 147Y. Liu, M. Digaletos, C. J. Ptacek and J. L. Thomas, Active and passive sampling techniques in headwater streams to characterize acesulfame-K, pharmaceutical and phosphorus contamination from on-site wastewater disposal systems in Canadian rural hamlets, *Sci. Total Environ.*, 2024, **956**, 177194.
- 148C. H. Swartz, S. Reddy, M. J. Benotti, H. Yin, L. B. Barber, B. J. Brownawell and R. A. Rudel, Steroid Estrogens, Nonylphenol Ethoxylate Metabolites, and Other Wastewater Contaminants in Groundwater Affected by a Residential Septic System on Cape Cod, MA, *Environ. Sci. Technol.*, 2006, **40**, 4894–4902.
- 149E. Godfrey, W. W. Woessner and M. J. Benotti, Pharmaceuticals in On-Site Sewage Effluent and Ground Water, Western Montana, *Groundwater*, 2007, **45**, 263–271.
- 150K. L. Del Rosario, S. Mitra, C. P. Humphrey and M. A. O'Driscoll, Detection of pharmaceuticals and other personal care products in groundwater beneath and adjacent to onsite wastewater treatment systems in a coastal plain shallow aquifer, *Sci. Total Environ.*, 2014, **487**, 216–223.
- 151B. G. Katz, D. W. Griffin, P. B. McMahon, H. S. Harden, E. Wade, R. W. Hicks and J. P. Chanton, Fate of Effluent-Borne Contaminants beneath Septic Tank Drainfields Overlying a Karst Aquifer, *J. Environ. Qual.*, 2010, **39**, 1181–1195.
- 152S. M. Elliott, M. L. Erickson, A. L. Krall and B. A. Adams, Concentrations of pharmaceuticals and other micropollutants in groundwater downgradient from large on-site wastewater discharges, *PLOS ONE*, 2018, **13**, e0206004.
- 153Y.-Y. Yang, G. S. Toor, P. C. Wilson and C. F. Williams, Septic systems as hot-spots of pollutants in the environment: Fate and mass balance of micropollutants in septic drainfields, *Sci. Total Environ.*, 2016, **566–567**, 1535–1544.

- 1  
2  
3  
4  
5  
6  
7  
8  
9  
10  
11  
12  
13  
14  
15  
16  
17  
18  
19  
20  
21  
22  
23  
24  
25  
26  
27  
28  
29  
30  
31  
32  
33  
34  
35  
36  
37  
38  
39  
40  
41  
42  
43  
44  
45  
46  
47  
48  
49  
50  
51  
52  
53  
54  
55  
56  
57  
58  
59  
60
- 154L. J. Standley, R. A. Rudel, C. H. Swartz, K. R. Attfeld, J. Christian, M. Erickson and J. G. Brody, Wastewater-contaminated groundwater as a source of endogenous hormones and pharmaceuticals to surface water ecosystems, *Environ. Toxicol. Chem.*, 2008, **27**, 2457–2468. DOI: 10.1039/D5EM00568J
- 155I. J. Fisher, P. J. Phillips, K. M. Colella, S. C. Fisher, T. Tagliaferri, W. T. Foreman and E. T. Furlong, The impact of onsite wastewater disposal systems on groundwater in areas inundated by Hurricane Sandy in New York and New Jersey, *Mar. Pollut. Bull.*, 2016, **107**, 509–517.
- 156B. G. Katz and D. W. Griffin, Using chemical and microbiological indicators to track the impacts from the land application of treated municipal wastewater and other sources on groundwater quality in a karstic springs basin, *Environ. Geol.*, 2008, **55**, 801–821.
- 157L. A. Schaider, J. M. Ackerman and R. A. Rudel, Septic systems as sources of organic wastewater compounds in domestic drinking water wells in a shallow sand and gravel aquifer, *Sci. Total Environ.*, 2016, **547**, 470–481.
- 158B. Subedi, N. Codru, D. M. Dziejwski, L. R. Wilson, J. Xue, S. Yun, E. Braun-Howland, C. Minihane and K. Kannan, A pilot study on the assessment of trace organic contaminants including pharmaceuticals and personal care products from on-site wastewater treatment systems along Skaneateles Lake in New York State, USA, *Water Res.*, 2015, **72**, 28–39.
- 159D. J. Fairbairn, M. E. Karpuzcu, W. A. Arnold, B. L. Barber, E. F. Kaufenberg, W. C. Koskinen, P. J. Novak, P. J. Rice and D. L. Swackhamer, Sources and transport of contaminants of emerging concern: A two-year study of occurrence and spatiotemporal variation in a mixed land use watershed, *Sci. Total Environ.*, 2016, **551–552**, 605–613.
- 160W. C. Scott, C. S. Breed, S. P. Haddad, S. R. Burket, G. N. Saari, P. J. Pearce, C. K. Chambliss and B. W. Brooks, Spatial and temporal influence of onsite wastewater treatment systems, centralized effluent discharge, and tides on aquatic hazards of nutrients, indicator bacteria, and pharmaceuticals in a coastal bayou, *Sci. Total Environ.*, 2019, **650**, 354–364.
- 161C. Wu, J. D. Witter, A. L. Spongberg and K. P. Czajkowski, Occurrence of selected pharmaceuticals in an agricultural landscape, western Lake Erie basin, *Water Res.*, 2009, **43**, 3407–3416.
- 162S. Hanamoto, N. Nakada, N. Yamashita and H. Tanaka, Source estimation of pharmaceuticals based on catchment population and in-stream attenuation in Yodo River watershed, Japan, *Sci. Total Environ.*, 2018, **615**, 964–971.
- 163F. Comeau, C. Surette, G. L. Brun and R. Losier, The occurrence of acidic drugs and caffeine in sewage effluents and receiving waters from three coastal watersheds in Atlantic Canada, *Sci. Total Environ.*, 2008, **396**, 132–146.
- 164C. A. James, J. P. Miller-Schulze, S. Ultican, A. D. Gipe and J. E. Baker, Evaluating Contaminants of Emerging Concern as tracers of wastewater from septic systems, *Water Res.*, 2016, **101**, 241–251.
- 165K. Schenck, L. Rosenblum, B. Ramakrishnan, J. Carson, D. Macke and C. Nietch, Correlation of trace contaminants to wastewater management practices in small watersheds, *Environ. Sci.: Processes Impacts*, 2015, **17**, 956–964.
- 166A. T. Kullberg, G. L. Carlson, S. M. Haver and W. G. McDowell, Contamination of Maine lakes by pharmaceuticals and personal care products, *J. Environ. Stud. Sci.*, 2022, **12**, 248–259.
- 167K. Troxell, B. Ng, I. Zamora-Ley and P. Gardinali, Detecting Water Constituents Unique to Septic Tanks as a Wastewater Source in the Environment by Nontarget Analysis: South Florida's Deering Estate Rehydration Project Case Study, *Environ. Toxicol. Chem.*, 2022, **41**, 1165–1178.
- 168R. L. Seiler, S. D. Zaugg, J. M. Thomas and D. L. Howcroft, Caffeine and Pharmaceuticals as Indicators of Waste Water Contamination in Wells, *Groundwater*, 1999, **37**, 405–410.
- 169M. Silver, W. Phelps, K. Masarik, K. Burke, C. Zhang, A. Schwartz, M. Wang, A. L. Nitka, J. Schutz, T. Trainor, J. W. Washington and B. D. Rheineck, Prevalence

- and Source Tracing of PFAS in Shallow Groundwater Used for Drinking Water in Wisconsin, USA, *Environ. Sci. Technol.*, 2023, **57**, 17415–17426.
- 170O. Kiguchi, G. Sato and T. Kobayashi, Source-specific sewage pollution detection in urban river waters using pharmaceuticals and personal care products as molecular indicators, *Environ. Sci. Pollut. Res.*, 2016, **23**, 22513–22529.
- 171C. Ort, M. G. Lawrence, J. Reungoat and J. F. Mueller, Sampling for PPCPs in Wastewater Systems: Comparison of Different Sampling Modes and Optimization Strategies, *Environ. Sci. Technol.*, 2010, **44**, 6289–6296.
- 172S. Luostarinen, W. Sanders, K. Kujawa-Roeleveld and G. Zeeman, Effect of temperature on anaerobic treatment of black water in UASB-septic tank systems, *Bioresour. Technol.*, 2007, **98**, 980–986.
- 173S. Suárez, R. Reif, J. M. Lema and F. Omil, Mass balance of pharmaceutical and personal care products in a pilot-scale single-sludge system: Influence of *T*, SRT and recirculation ratio, *Chemosphere*, 2012, **89**, 164–171.
- 174J. Li, J. Gao, Q. Zheng, P. K. Thai, H. Duan, J. F. Mueller, Z. Yuan and G. Jiang, Effects of pH, Temperature, Suspended Solids, and Biological Activity on Transformation of Illicit Drug and Pharmaceutical Biomarkers in Sewers, *Environ. Sci. Technol.*, 2021, **55**, 8771–8782.
- 175L. Mutzner, E. L. M. Vermeirssen and C. Ort, Passive samplers in sewers and rivers with highly fluctuating micropollutant concentrations – Better than we thought, *J. Hazard. Mater.*, 2019, **361**, 312–320.
- 176Y. Meng, W. Liu, X. Liu, J. Zhang, M. Peng and T. Zhang, A review on analytical methods for pharmaceutical and personal care products and their transformation products, *J. Environ. Sci.*, 2021, **101**, 260–281.
- 177D. Cacace, D. Fatta-Kassinos, C. M. Manaia, E. Cytryn, N. Kreuzinger, L. Rizzo, P. Karaolia, T. Schwartz, J. Alexander, C. Merlin, H. Garelick, H. Schmitt, D. de Vries, C. U. Schwermer, S. Meric, C. B. Ozkal, M.-N. Pons, D. Kneis and T. U. Berendonk, Antibiotic resistance genes in treated wastewater and in the receiving water bodies: A pan-European survey of urban settings, *Water Res.*, 2019, **162**, 320–330.
- 178J. L. Hayward, Y. Huang, L. T. Hansen, C. K. Yost, C. Lake and R. C. Jamieson, Fate and distribution of determinants of antimicrobial resistance in lateral flow sand filters used for treatment of domestic wastewater, *Sci. Total Environ.*, 2021, **767**, 145481.
- 179A. M. S. Mortensen, S. J. Poulsen, M. á F. Berbisá and A. Djurhuus, Distribution of antibiotic resistant bacteria and genes in sewage and surrounding environment of Tórshavn, Faroe Islands, *Front. Env. Sci.*
- 180J. S. Cedeño-Muñoz, S. A. Aransiola, K. V. Reddy, P. Ranjit, M. O. Victor-Ekwebelem, O. J. Oyedele, I. B. Pérez-Almeida, N. R. Maddela and J. M. Rodríguez-Díaz, Antibiotic resistant bacteria and antibiotic resistance genes as contaminants of emerging concern: Occurrences, impacts, mitigations and future guidelines, *Sci. Total Environ.*, 2024, **952**, 175906.
- 181J. C. Chee-Sanford, R. I. Mackie, S. Koike, I. G. Krapac, Y.-F. Lin, A. C. Yannarell, S. Maxwell and R. I. Aminov, Fate and Transport of Antibiotic Residues and Antibiotic Resistance Genes following Land Application of Manure Waste, *J. Environ. Qual.*, 2009, **38**, 1086–1108.
- 182Y. He, Q. Yuan, J. Mathieu, L. Stadler, N. Senehi, R. Sun and P. J. J. Alvarez, Antibiotic resistance genes from livestock waste: occurrence, dissemination, and treatment, *npj Clean Water*, 2020, **3**, 1–11.
- 183X.-X. Zhang, T. Zhang and H. H. P. Fang, Antibiotic resistance genes in water environment, *Appl. Microbiol. Biotechnol.*, 2009, **82**, 397–414.
- 184D. G. J. Larsson and C.-F. Flach, Antibiotic resistance in the environment, *Nat. Rev. Microbiol.*, 2022, **20**, 257–269.
- 185J. Damashek, J. R. Westrich, J. M. B. McDonald, M. E. Teachey, C. R. Jackson, J. G. Frye, E. K. Lipp, K. A. Capps and E. A. Ottesen, Non-point source fecal



- contamination from aging wastewater infrastructure is a primary driver of antibiotic resistance in surface waters, *Water Res.*, 2022, **222**, 118853. View Article Online  
DOI: 10.1039/D5EM00568J
- 186H. Su, W. Li, S. Okumura, Y. Wei, Z. Deng and F. Li, Transfer, elimination and accumulation of antibiotic resistance genes in decentralized household wastewater treatment facility treating total wastewater from residential complex, *Sci. Total Environ.*, 2024, **912**, 169144.
- 187G. E. Ramos, Pak ,Hyoungmook, Gerlich ,Ryan, Jantrania ,Anish, Smith ,Brooke L. and M. D. and King, Aerosol partitioning potential of bacteria presenting antimicrobial resistance from different stages of a small decentralized septic treatment system, *Aerosol Sci. Tech.*, 2023, **57**, 517–531.
- 188T. R. Burch, J. P. Stokdyk, A. D. Firnstahl, B. A. Kieke Jr., R. M. Cook, S. A. Opelt, S. K. Spencer, L. M. Durso and M. A. Borchardt, Microbial source tracking and land use associations for antibiotic resistance genes in private wells influenced by human and livestock fecal sources, *J. Environ. Qual.*, 2023, **52**, 270–286.
- 189J. L. Hayward, Y. Huang, C. K. Yost, L. T. Hansen, C. Lake, A. Tong and R. C. Jamieson, Lateral flow sand filters are effective for removal of antibiotic resistance genes from domestic wastewater, *Water Res.*, 2019, **162**, 482–491.
- 190L. Tan, C. Zhang, F. Liu, P. Chen, X. Wei, H. Li, G. Yi, Y. Xu and X. Zheng, Three-compartment septic tanks as sustainable on-site treatment facilities? Watch out for the potential dissemination of human-associated pathogens and antibiotic resistance, *J. Environ. Manage.*, 2021, **300**, 113709.
- 191A. S. Sidhu, F. N. Mikolajczyk and J. C. Fisher, Antimicrobial Resistance Linked to Septic System Contamination in the Indiana Lake Michigan Watershed, *Antibiotics*, 2023, **12**, 569.
- 192D. Parde, A. Patwa, A. Shukla, R. Vijay, D. J. Killedar and R. Kumar, A review of constructed wetland on type, treatment and technology of wastewater, *Environ. Technol. Innov.*, 2021, **21**, 101261.
- 193A. Akyürek and O. N. Ağdağ, Comparison of constructed wetlands and package type sequencing batch biological treatment plants in rural areas in terms of efficiency and cost in a full-scale example, *Ecol. Eng.*, 2024, **201**, 107190.
- 194A. B. A. Boxall, M. A. Rudd, B. W. Brooks, D. J. Caldwell, K. Choi, S. Hickmann, E. Innes, K. Ostapyk, J. P. Staveley, T. Verslycke, G. T. Ankley, K. F. Beazley, S. E. Belanger, J. P. Berninger, P. Carriquiriborde, A. Coors, P. C. DeLeo, S. D. Dyer, J. F. Ericson, F. Gagné, J. P. Giesy, T. Gouin, L. Hallstrom, M. V. Karlsson, D. G. J. Larsson, J. M. Lazorchak, F. Mastrocco, A. McLaughlin, M. E. McMaster, R. D. Meyerhoff, R. Moore, J. L. Parrott, J. R. Snape, R. Murray-Smith, M. R. Servos, P. K. Sibley, J. O. Straub, N. D. Szabo, E. Topp, G. R. Tetreault, V. L. Trudeau and G. Van Der Kraak, Pharmaceuticals and Personal Care Products in the Environment: What Are the Big Questions?, *Environ. Health Perspect.*, 2012, **120**, 1221–1229.
- 195C. G. Daughton, Eco-directed sustainable prescribing: feasibility for reducing water contamination by drugs, *Sci. Total Environ.*, 2014, **493**, 392–404.
- 196C. G. Daughton and I. S. Ruhoy, Lower-dose prescribing: Minimizing “side effects” of pharmaceuticals on society and the environment, *Sci. Total Environ.*, 2013, **443**, 324–337.
- 197K. Helwig, L. Niemi, J.-Y. Stenuick, J. C. Alexandre, S. Pflieger, J. Roberts, J. Harrower, I. Nafo and O. Pahl, Broadening the Perspective on Reducing Pharmaceutical Residues in the Environment, *Environ. Toxicol. Chem.*, 2024, **43**, 653–663.
- 198K. Thornber, M. Bentham, S. Pflieger, C. Kirchhelle, F. Adshead, S. Owen, H. Holmes, R. Brown, C. Farmer, M. Eii, L. Niemi, L. Wohler, E. Wilson, M. Wade, W. Tyler-Batt, M. Taylor, G. Sowman, P. Southall, R. Smith and C. Tyler, Pharmaceutical pollution from health care: a systems-based strategy for mitigating risks to public and environmental health, *The Lancet Planetary Health*.

- 199A. Cussans, G. Harvey, T. Kemple and M. Tomson, Interventions to reduce the environmental impact of medicines: A UK perspective, *J. Climate Change Health*, 2021, **4**, 100079. View Article Online  
DOI: 10.1039/D5EM00568J
- 200E. Salehi, C. Ljungberg Persson and H. Håkonsen, Green pharmacy practice – a multi method study of environmental sustainability measures implemented in Swedish pharmacies, *Journal of Pharmaceutical Policy and Practice*, 2025, **18**, 2512983.
- 201B. Petrie, J. Youdan, R. Barden and B. Kasprzyk-Hordern, New Framework To Diagnose the Direct Disposal of Prescribed Drugs in Wastewater – A Case Study of the Antidepressant Fluoxetine, *Environ. Sci. Technol.*, 2016, **50**, 3781–3789.
- 202A. Aharaz, J. H. Rasmussen, H. B. Ø. McNulty, A. Cyron, P. K. Fabricius, A. K. Bengaard, H. R. C. Sejberg, R. R. L. Simonsen, C. Trelldal and M. B. Houllind, A Collaborative Deprescribing Intervention in a Subacute Medical Outpatient Clinic: A Pilot Randomized Controlled Trial, *Metabolites*, 2021, **11**, 204.
- 203C. Weeks and T. Thomas, Sustainable Prescribing in Secure Services – a Quality Improvement Initiative, *BJPsych Open*, 2022, **8**, S116–S116.
- 204J. Wang, M. Zhang, J. Liu, X. Hu and B. He, Using a targeted ecopharmacovigilance intervention to control antibiotic pollution in a rural aquatic environment, *Sci. Total Environ.*, 2019, **696**, 134007.
- 205L. Niemi, C. Anderson, N. Arakawa, M. Taggart, S. Gibb and S. Pflieger, Do you think medicines can be prescribed in a more eco-directed, greener way? A qualitative study based on public and prescriber focus groups on the impact of pharmaceuticals in Scotland’s water environment, *BMJ Open*, 2025, **15**, e088066.
- 206W. Hall, J. Prichard, P. Kirkbride, R. Bruno, P. K. Thai, C. Gartner, F. Y. Lai, C. Ort and J. F. Mueller, An analysis of ethical issues in using wastewater analysis to monitor illicit drug use, *Addiction*, 2012, **107**, 1767–1773.
- 207S. E. Hrudey, D. S. Silva, J. Shelley, W. Pons, J. Isaac-Renton, A. H.-S. Chik and B. Conant, Ethics Guidance for Environmental Scientists Engaged in Surveillance of Wastewater for SARS-CoV-2, *Environ. Sci. Technol.*, 2021, **55**, 8484–8491.
- 208D. Jacobs, T. McDaniel, A. Varsani, R. U. Halden, S. Forrest and H. Lee, Wastewater Monitoring Raises Privacy and Ethical Considerations, *IEEE-TTS*, 2021, **2**, 116–121.
- 209C. Klingler, D. S. Silva, C. Schuermann, A. A. Reis, A. Saxena and D. Strech, Ethical issues in public health surveillance: a systematic qualitative review, *BMC Public Health*, 2017, **17**, 295.
- 210R. Kwiatkowska, A. Ruhaak, B. Kasprzyk-Hordern, F. Hassard, L. Lundy, M. D. Cesare, M. Hickman and A. Singer, Wastewater-based epidemiology and group privacy: the elephant in the sewer?, *Pre-print of a viewpoint submitted to Environ. Sci. Technol.*, OSF, 2021.
- 211M. M. Coffman, J. S. Guest, M. K. Wolfe, C. C. Naughton, A. B. Boehm, J. D. Vela and J. S. Carrera, Preventing Scientific and Ethical Misuse of Wastewater Surveillance Data, *Environ. Sci. Technol.*, 2021, **55**, 11473–11475.
- 212J. R. Kelly, M. Cosgrove, C. Judd, K. Scott, A. M. Loughlin and V. O’Keane, Mood matters: a national survey on attitudes to depression, *Ir. J. Med. Sci.*, 2019, **188**, 1317–1327.
- 213L. R. Martinez, S. Xu and M. Hebl, Utilizing Education and Perspective Taking to Remediate the Stigma of Taking Antidepressants, *Community Ment. Health. J.*, 2018, **54**, 450–459.
- 214K. M. Blum, C. Gallampois, P. L. Andersson, G. Renman, A. Renman and P. Haglund, Comprehensive assessment of organic contaminant removal from on-site sewage treatment facility effluent by char-fortified filter beds, *J. Hazard. Mater.*, 2019, **361**, 111–122.
- 215R. A. Trenholm, B. J. Vanderford and S. A. Snyder, On-line solid phase extraction LC–MS/MS analysis of pharmaceutical indicators in water: A green alternative to conventional methods, *Talanta*, 2009, **79**, 1425–1432.

- 216B. Petrie and B. Kasprzyk-Hordern, Monitoring emerging contaminants in wastewaters and the environment: The catchment approach, *15th EuChemS International Conference on Chemistry and the Environment*, 2015.
- 217S. Ebrahimzadeh, S. Castiglioni, F. Riva, E. Zuccato and A. Azzellino, Carbamazepine Levels Related to the Demographic Indicators in Groundwater of Densely Populated Area, *Water*, 2021, **13**, 2539.
- 218Q. T. T. Do, M. Otaki, Y. Otaki, C. Tushara and I. W. Sanjeewa, Pharmaceutical Contaminants in Shallow Groundwater and Their Implication for Poor Sanitation Facilities in Low-Income Countries, *Environ. Toxicol. Chem.*, 2022, **41**, 266–274.
- 219I. m. Verstraeten, G. s. Fetterman, M. t. Meyer, T. Bullen and S. k. Sebree, Use of tracers and isotopes to evaluate vulnerability of water in domestic wells to septic waste, *Ground Water Monit. Remediat.*, 2005, **25**, 107–117.
- 220G. M. Ferrell and B. H. Grimes, Effects of Centralized and Onsite Wastewater Treatment on the Occurrence of Traditional and Emerging Contaminants in Streams, *J. Environ. Health*, 2014, **76**, 18–27.
- 221S. Spengler and M. Heskett, Impact to Stream Water Quality from Sewage Exfiltration and Legacy On-Site Disposal Systems on the Island of O’Ahu, Hawaii | IIETA, *Int. J. Environ. Impact*, 2023, **6**, 13–23.
- 222E. Hain, K. He, J. A. Batista-Andrade, A. Feerick, M. Tarnowski, A. Timm and L. Blaney, Geospatial and co-occurrence analysis of antibiotics, hormones, and UV filters in the Chesapeake Bay (USA) to confirm inputs from wastewater treatment plants, septic systems, and animal feeding operations, *J. Hazard. Mater.*, 2023, **460**, 132405.

## Figures and Tables

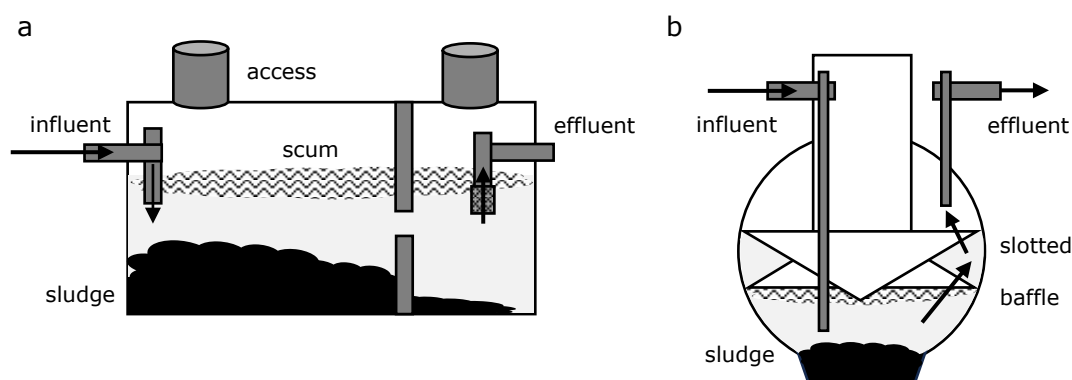


Figure 1: Outline of different septic tank (ST) designs: Rectangular ST with two compartments (a) and torpedo ST (b).

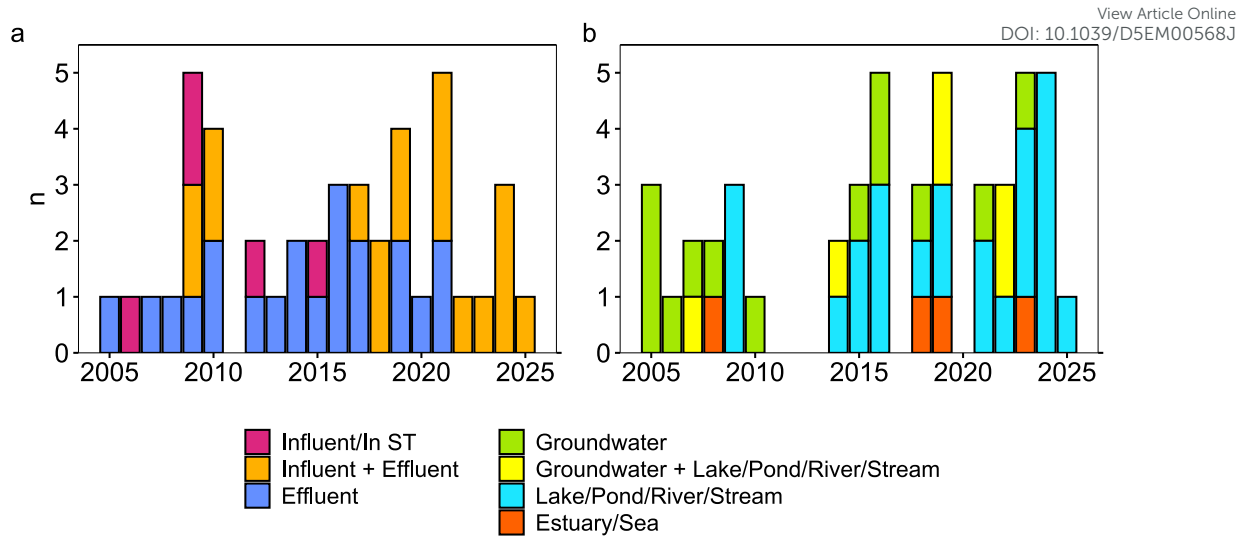


Figure 2: Number of conducted studies per year (n) on active pharmaceutical ingredients (APIs) in STs (a) and the receiving environment (b).

Environmental Science: Processes & Impacts Accepted Manuscript

Table 1: Conducted studies on active pharmaceutical ingredients (APIs) in STs and alternative OWTWs with study location, publishing year, the ST design, the wastewater (WW) source, type of receiving environment, types of samples taken, number of septic tanks sampled (STs), number of sampling events, and number of APIs analysed (n). Types of samples taken include influent (Inf) from STs, alternative OWTWs or centralised WWTWs, ST effluent (Eff) or effluent after secondary treatment (final Eff) or from alternative OWTWs.

Study location	Year	Design	WW source	Receiving environment	Samples	STs	Sampling events	n	Study
Australia	2010	Alternative	Centralised WWTW (3800 PE <sup>e</sup> )	N/A	Inf + final Eff	1	3	19	116
Belgium	2017	Alternative	Centralised WWTW (450 PE) and hospital	N/A	Inf + final Eff	1	Lab study	6	114
Brazil <sup>a</sup>	2021	ST + secondary treatment	Residential (student housing, 10 PE)	N/A	Inf + final Eff	1	16	10	112
Canada	2008	ST + secondary treatment	Households	Ground	ST Eff	2	2	11	104
China	2023	Alternative	N/A	N/A	Inf + final Eff	3	1	non-target	83
Denmark	2009	ST + secondary treatment	Households	Ponds, streams	ST Eff + final Eff	13	1	8	139
Germany	2018	Alternative	Households (2500 PE)	N/A	Inf + final Eff	3	13	27	65
Iran	2018	ST	Hospital (85 beds)	N/A	Inf + ST Eff	1	3	6	109
Japan	2009	Alternative	Households	N/A	In tank	3	1	5	125
Korea	2019	Alternative	N/A	Streams, creeks	Inf + final Eff	24	1	8	115
Scotland	2019	ST + sometimes infiltration field	Households: 2 - 7 people	Streams	Final Eff	15	1	10	87
Scotland	2024	ST	Residential (292 PE)	River	Inf + ST Eff	1	1	68	111
Scotland	2024	ST	Residential (217 - 475 PE)	Rivers and stream	Inf + ST Eff	5	12	68	69
Scotland <sup>b</sup>	2025	ST	Residential (217 - 475 PE)	Rivers and stream	Inf + ST Eff	5	12	25	120
South Africa	2021	ST + secondary treatment	Residential (84 households)	N/A	Inf + ST Eff	1	6	21	110
South Africa <sup>a</sup>	2022	alternative	Residential (410 PE)	N/A	Inf + ST Eff	1	1	non-target	108

Spain	2016	ST + secondary treatment	550 - 2000 PE	N/A	ST Eff + final Eff	1	2	6	66
Spain	2020	ST + secondary treatment	University Campus	N/A	ST Eff + final Eff	1	12	15	138
Spain	2021	ST + secondary treatment	Office (50 people)	N/A	ST Eff + final Eff	1	8	13	103
Spain	2024	alternative	Offices (3 buildings)	N/A	Inf + final Eff	1	6	8	88
Sweden <sup>a</sup>	2017	ST + secondary treatment	Residential (1 - 40 PE)		ST Eff + final Eff	13	2	non-target	61
Sweden <sup>a</sup>	2019	ST + secondary treatment	Residential (four households)	N/A	ST Eff + final Eff	1	1	non-target	214
Sweden	2019	Outdoor pond + secondary treatment	Residential (500 and 3000 PE)	Ground	Inf + final Eff	2	5	56	46
Switzerland <sup>c</sup>	2009	alternative	Household (3 PE) spiked	Ground	Inf + final Eff	1	11	23	60
USA	2006	ST + secondary treatment	Residential	Ground	In tank	1	1	2	148
USA	2007	ST + secondary treatment	High School (350 people)	Ground	ST Eff	1	2	18	149
USA <sup>d</sup>	2009	ST	N/A	N/A	Inf	1	1	6	215
USA	2009	ST + secondary treatment	Residential	Ground	ST Eff + final Eff	15	1	10	140
USA	2009	ST + secondary treatment	Senior Centre	Ground	ST Eff	1	1	15	90
USA	2010	ST + secondary treatment	Office + schools: High school (600 students), Montessori school (51 students), girls boarding school (40 students)	Surface water and ground	ST Eff + final Eff	5	1 - 6	4	106
USA	2010	ST + secondary treatment	Households (4 - 5 PE < 65 years and 2 PE > 65)	Ground	Inf + ST Eff	6	3	8	107
USA	2010	ST + secondary treatment	Households (2 - 4 PE)	Ground	ST Eff	3	3	13	151
USA	2012	ST / Cluster	Residential (student housing)	N/A	Inf	2	26	17	119

USA	2012	ST + secondary treatment or alternative	Households (2 – 6 PE)	N/A	ST Eff	8	1	3	67
USA	2013	Alternative	Centralised WWTWs	N/A	ST Eff	2	7	4	62
USA	2014	ST + secondary treatment	Households (2 – 4 PE)	Ground	ST Eff + final Eff	4	4	1	150
USA	2014	ST + secondary treatment	Centralised WWTW	N/A	ST Eff	2	2	16	74
USA	2015	ST + secondary treatment	Extended health care facility for the elderly (65 beds)	Ground	In tank	1	1	46	117
USA	2015	ST + secondary treatment	Household	Ground	Final Eff	4	7	8	158
USA	2016	ST + secondary treatment	Residential (graduate student housing, business units)	Ground	ST Eff + final Eff	1	34	7	153
USA	2017	ST + secondary treatment	Residential (graduate student housing, business units)	Ground	ST Eff + final Eff	1	1	8	124
USA	2021	ST + secondary treatment	Centralised WWTWs	Ground	Inf + final Eff	3	Lab study	5	137
USA	2021	ST + secondary treatment	Centralised WWTW and single households	Ground	ST Eff + final Eff	13	42	21	105

<sup>a</sup> Concentrations could not be calculated from available data, <sup>b</sup> Enantioselective analysis of data available in <sup>69</sup>, <sup>c</sup> wastewater was spiked, all are excluded from Figure 3, <sup>d</sup> sampling location not given, author affiliation used instead, <sup>e</sup> PE; population equivalents.

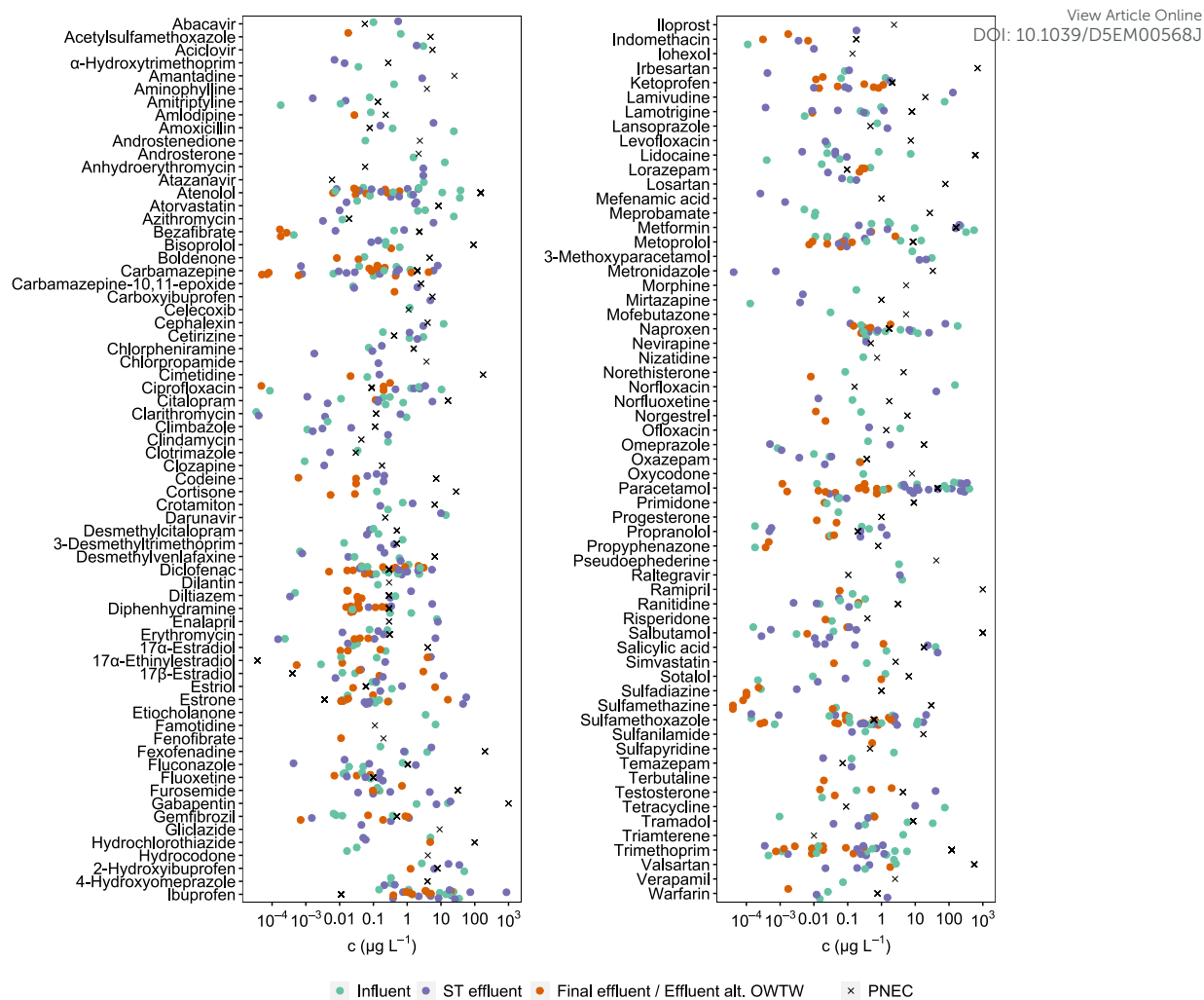


Figure 3: Mean concentration (one data point for study and treatment type using studies in Table 1) and lowest freshwater PNEC<sup>122</sup> of detected active pharmaceutical ingredients (APIs) in influent, ST effluent, and final effluent (after infiltration field) or effluent from alternative OWTWs ( $c$  in  $\mu\text{g L}^{-1}$ ; logarithmic scale). For systems receiving influent from centralised WWTWs, only effluent values were included.



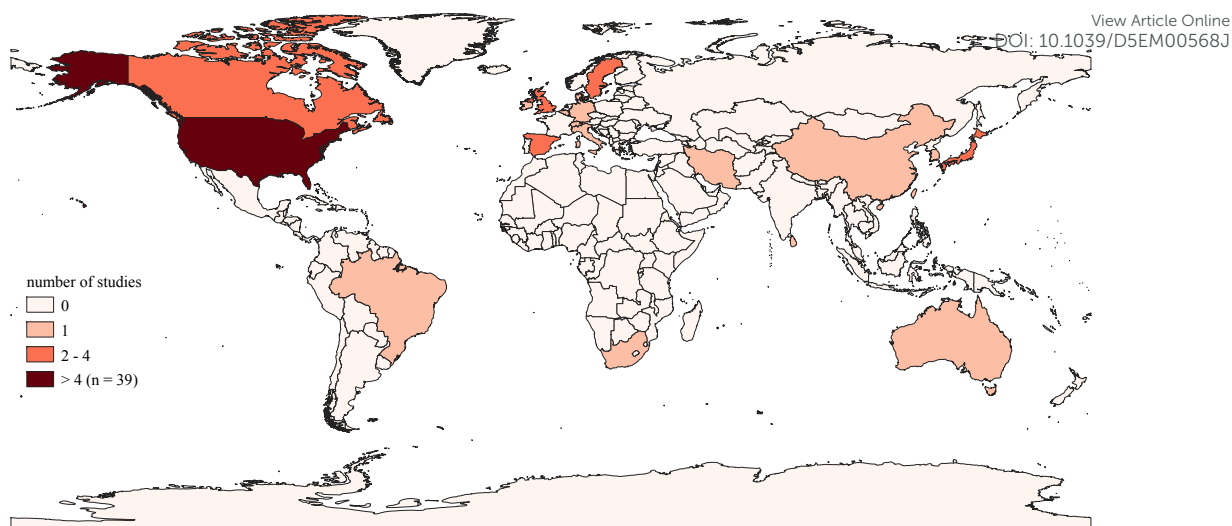


Figure 4: Number of studies conducted in wastewater, groundwater and surface water (data in Table 1 and 2).

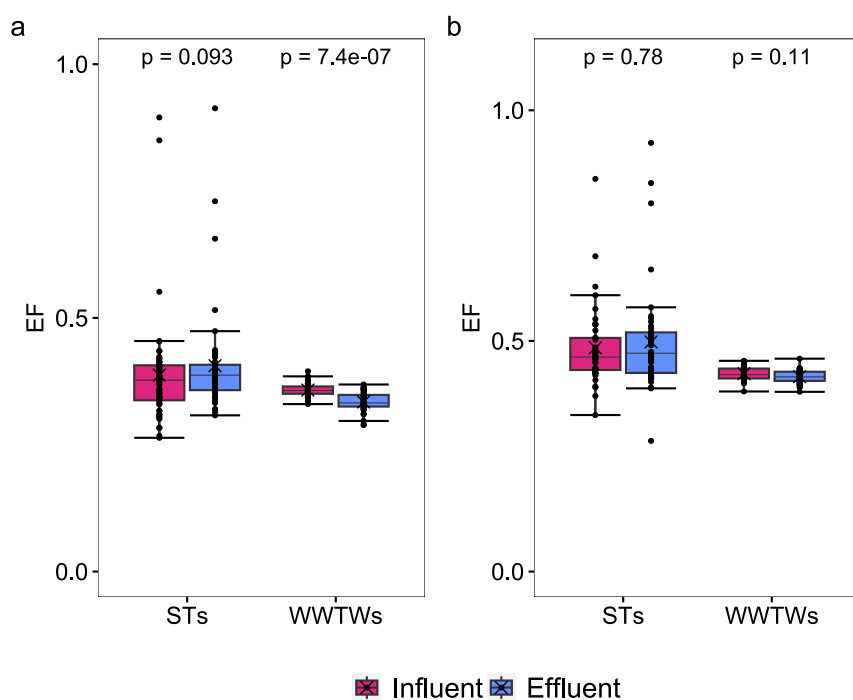


Figure 5: Enantiomeric fraction (EF) of citalopram (a) and desmethylcitalopram (b) in influent and effluent of five community STs ( $n = 60$ )<sup>120</sup> and five centralised WWTWs ( $n = 35$ )<sup>216</sup> with Wilcoxon results (significant difference for  $p < 0.05$ ).

Table 2: Conducted studies on active pharmaceutical ingredients (APIs) in the receiving environment impacted by OWTWs with study location, publishing year, environment sampled, number of sampling points, number of sampling events, number of APIs analysed and if any wastewater samples were also taken (WW).

Study location	Year	Environment	Sampling points	Sampling events	APIs	WW	Study
Brazil <sup>a</sup>	2021	River	4	2	10	Yes	112
Canada	2008	Groundwater	11	2	11	Yes	104
Canada	2008	Estuary	11	4 – 5	10	No	163
Canada <sup>a</sup>	2023	Stream	5	14 – 17	5	No	84
Canada	2024	River	6	3	5	No	147
China	2023	River	18	1	non-target	No	83
Denmark	2009	Ponds and streams	13	1	8	Yes	139
Iran	2018	Sea	8	2	6	Yes	109
Ireland	2024	Rivers and streams	22	2	2	No	85
Italy	2021	Groundwater	53	1	1	No	217
Italy	2024	Drainage channels and canal	6	2	6	No	89
Japan	2016	River	30	1	1	No	170
Japan	2018	River	4	17	54	No	162
Korea	2019	Streams and creeks	48	1	8	Yes	115
Scotland	2019	River and streams	14	1	10	Yes	87
Scotland	2024	River	2	1	68	Yes	111
Scotland	2024	Rivers and stream	10	4	68	Yes	69
Scotland <sup>b</sup>	2025	Rivers and stream	10	4	25	Yes	120
Sri Lanka <sup>c</sup>	2022	Canals	11	3	5	No	218
Sweden	2019	Groundwater, lake and streams	9	5	56	Yes	46
USA <sup>c</sup>	1999	Groundwater	18	1	8	No	168
USA	2005	Groundwater	19 – 25	1	10	No	219
USA	2006	Groundwater	11	4	2	Yes	148
USA	2007	Groundwater	39	2	18	Yes	149
USA	2008	Groundwater and springs	5	2	12	No	156
USA	2008	Pond	6	2	24	No	154
USA	2009	Groundwater	11	1	15	Yes	90
USA	2009	Drainage systems and streams	27	17	15	No	161
USA	2010	Groundwater	3	3	13	Yes	151
USA	2014	Groundwater and streams	12	4	1	Yes	150
USA	2014	Streams	7	5	7	No	220
USA	2015	Groundwater	12	1	46	Yes	117
USA	2015	Lake	28	7	8	Yes	158

Open Access Article. Published on 30 April 2026. Downloaded from https://pubs.rsc.org on 05/05/2026 14:41:41. This article is licensed under a Creative Commons Attribution 3.0 Unported Licence.



USA	2015	Stream	10	15 – 18	7	No	165
USA	2016	Groundwater	20	1	59	No	157
USA	2016	Groundwater	25	1	103	No	155
USA	2016	Streams and shoreline seeps	20	2	4	No	164
USA	2016	River	4	17	11	No	159
USA	2018	Groundwater	7	3	108	No	152
USA	2019	River, groundwater and springs	27	1	6	No	86
USA	2019	Estuary	12	2	4	No	160
USA	2022	Groundwater and stream	20	4 – 8	3 – 6	No	146
USA <sup>c</sup>	2022	Groundwater, canals and sea	18	3	non-target	No	167
USA	2022	Lake and streams	30	1 – 4	15 – 20	No	166
USA	2023	Groundwater	450	1	2	No	169
USA	2023	Streams and springs	47	9	2	No	221
USA	2023	Sea	58	1	52	No	222

<sup>a</sup> Concentrations could not be calculated from available data , <sup>b</sup> Enantioselective analysis of data available in Wilschnack et al.<sup>69</sup> , <sup>c</sup> APIs are identified but no concentration data is available, both are excluded from Figure 6.



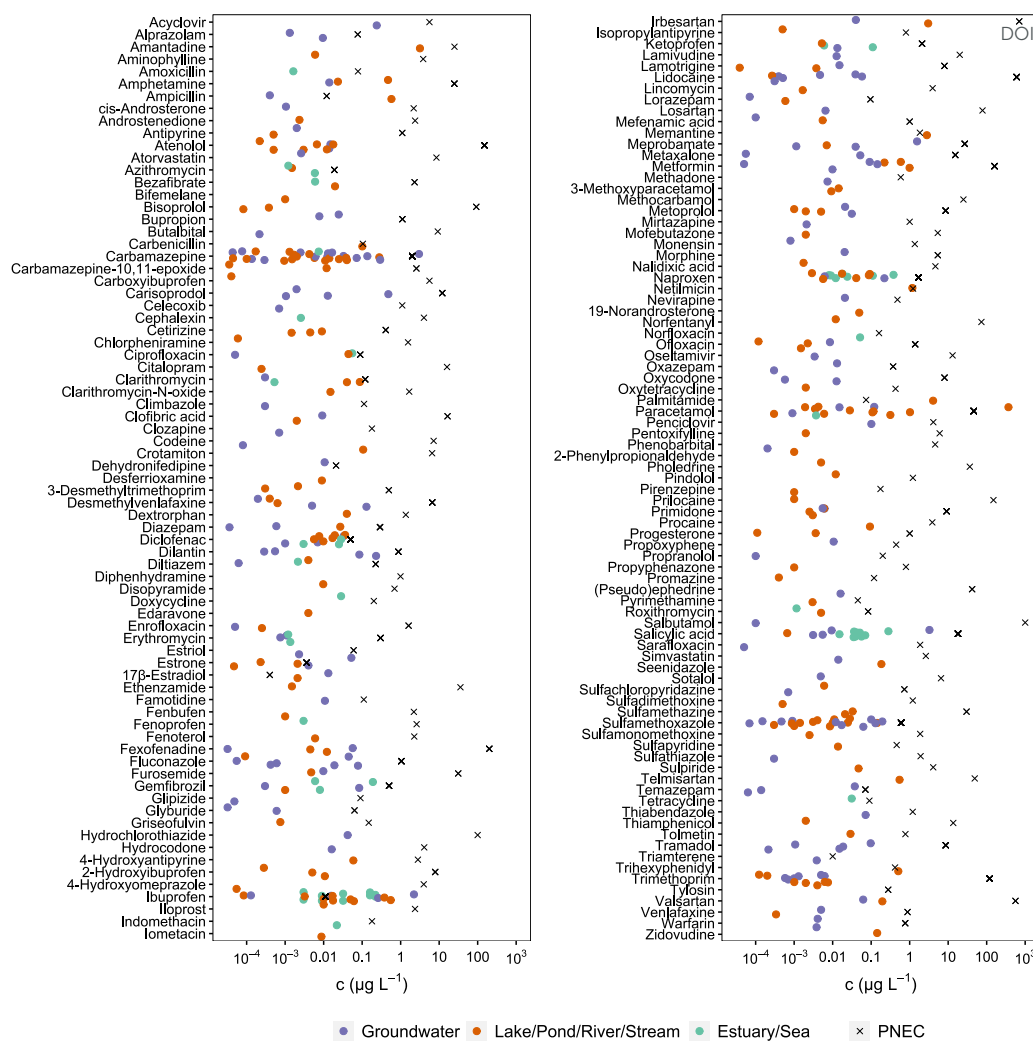


Figure 6: Mean concentration (data from one study, studies in Table 2) and lowest freshwater PNEC<sup>122</sup> of active pharmaceutical ingredients (APIs) in ground- and surface water, including streams, lakes, ponds, canals and seawater, impacted by OWTWs ( $c$  in  $\mu\text{g L}^{-1}$ ; logarithmic scale). Some locations also receive discharges from centralised WWTWs, but known data points directly downstream of centralised WWTWs were excluded.

Environmental Science: Processes & Impacts Accepted Manuscript

**Data availability**

View Article Online  
DOI: 10.1039/D5EM00568J

No primary research results have been included, and no new data was generated as part of this review.

1  
2  
3  
4  
5  
6  
7  
8  
9  
10  
11  
12  
13  
14  
15  
16  
17  
18  
19  
20  
21  
22  
23  
24  
25  
26  
27  
28  
29  
30  
31  
32  
33  
34  
35  
36  
37  
38  
39  
40  
41  
42  
43  
44  
45  
46  
47  
48  
49  
50  
51  
52  
53  
54  
55  
56  
57  
58  
59  
60

Open Access Article. Published on 20 April 2026. Downloaded on 02/05/2026 12:41:13.  
This article is licensed under a Creative Commons Attribution 3.0 Unported Licence.



Environmental Science: Processes & Impacts Accepted Manuscript