

## CORRECTION

[View Article Online](#)
[View Journal](#) | [View Issue](#)


Cite this: *Nanoscale*, 2025, **17**, 13002

## Correction: Micellar nanoparticles inhibit breast cancer and pulmonary metastasis by modulating the recruitment and depletion of myeloid-derived suppressor cells

Zhengze Lu, Houqin Liu, Ling Ma, Kebai Ren, Zhidi He, Man Li and Qin He\*

DOI: 10.1039/d5nr90094h

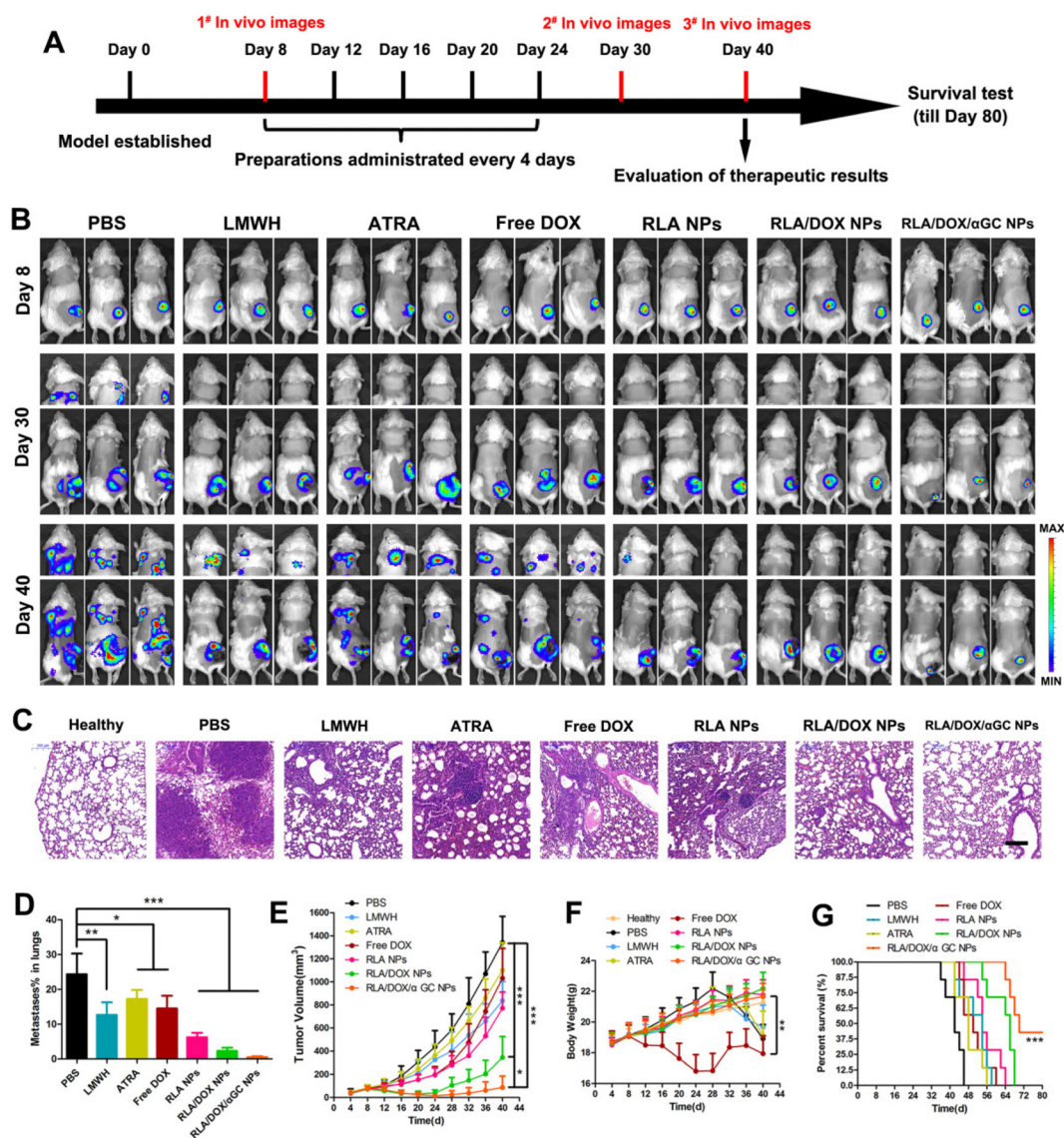
[rsc.li/nanoscale](https://rsc.li/nanoscale)

Correction for 'Micellar nanoparticles inhibit breast cancer and pulmonary metastasis by modulating the recruitment and depletion of myeloid-derived suppressor cells' by Zhengze Lu *et al.*, *Nanoscale*, 2022, **14**, 17315–17330, <https://doi.org/10.1039/D2NR03880C>.

The authors regret that incorrect versions of Fig. 8 and Fig. S16 were included in the originally published article and ESI, respectively. The correct versions of Fig. 8 and Fig. S16 are shown below.

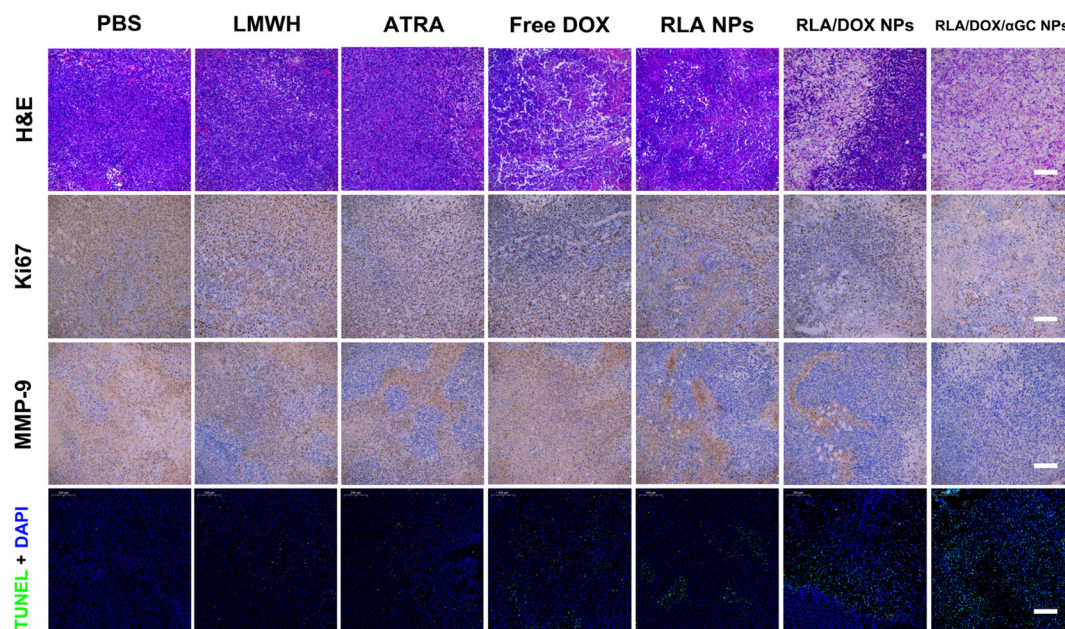
Key Laboratory of Drug-Targeting and Drug Delivery System of the Education Ministry and Sichuan Province, Sichuan Engineering Laboratory for Plant-Sourced Drug and Sichuan Research Center for Drug Precision Industrial Technology, West China School of Pharmacy, Med-X Center for Materials, Sichuan University, Chengdu 610041, People's Republic of China. E-mail: [qinhe@scu.edu.cn](mailto:qinhe@scu.edu.cn); Fax: +86-28-85502532; Tel: +86-28-85502532





**Fig. 8** RLA/DOX/αGC NPs inhibited the progression of 4T1 breast cancer and pulmonary metastasis. (A) The timeline of this therapeutic experiment. (B) *In vivo* living images of 4T1-Luc tumor-bearing mice in the therapeutic experiment. (C) The distribution of metastatic nodules in the lungs of 4T1-Luc tumor-bearing mice. The dark purple areas in the images were the metastases. Scale bar represents 200 μm. (D) The semi-quantitative results of the metastatic area ratio (means ± SD,  $n = 3$ , \* $p < 0.05$ , \*\* $p < 0.01$  and \*\*\* $p < 0.001$ ). (E) Tumor volume curves of mice in the therapeutic experiment (means ± SD,  $n = 7$ , \* $p < 0.05$  and \*\*\* $p < 0.001$ ). (F) Body weight curves of mice in the therapeutic experiment (means ± SD,  $n = 7$ , \*\* $p < 0.01$ ). (G) Overall survival curves of mice in the therapeutic experiment (Log-rank Test,  $n = 7$ , \*\*\* $p < 0.001$ ).





**Fig. S16** Immunohistochemical staining results of tumor tissue sections of 4T1-Luc tumor-bearing mice. (HE staining: hematoxylin stained nuclei (blue) and eosin stained cytoplasm and extracellular matrix (pink); Ki67 and MMP-9 staining: hematoxylin stained nuclei (blue), Ki67 positive cells (brown) and MMP-9 (brown); TUNEL staining: DAPI stained nuclei (blue) and TUNEL positive cells (green); scale bars represent 200  $\mu$ m).

The Royal Society of Chemistry apologises for these errors and any consequent inconvenience to authors and readers.

