

Cite this: *Mater. Adv.*, 2021,
2, 384

Influence of counter ions of ammonium for nitrogen doping and carbon properties in hydrothermal carbonization: characterization and supercapacitor performance†

Kenneth G. Latham,^{id}*^{ab} Marveh Forghani,^c Wesley M. Dose,^{id}^{de}
Jessica A. Allen^{id}^f and Scott W. Donne^{id}^a

Ammonium has been successfully utilized to nitrogen dope carbon structures *via* hydrothermal carbonization, although the influence of different attached counter ions (anions) on the resultant carbon physicochemical properties and electrochemical performance has not been examined before. Four different counter ions (SO_4^{2-} , PO_4^{3-} , Cl^- , and $\text{Fe}(\text{SO}_4)_2$) attached to ammonium were seen to influence the hydrothermal reaction, nitrogen incorporation levels, physicochemical properties, activation ability and supercapacitor performance. For instance, nitrogen K-edge NEXAFS found differences in the levels of pyridinic and pyrrolic groups with PO_4^{3-} incorporating predominately pyridinic nitrogen groups. PO_4^{3-} also achieved the highest surface area ($2132.6 \text{ m}^2 \text{ g}^{-1}$), however this material was unstable as a supercapacitor, losing almost 50% of its performance over 500 cycles. SO_4^{2-} resulted in the highest level of nitrogen incorporation (5.53 at%) and hydrothermal yield (45.5%), while $\text{Fe}(\text{SO}_4)_2^{2-}$ resulted in the lowest (2.92 at%). However, $\text{Fe}(\text{SO}_4)_2^{2-}$ produced unique flower like structures not seen in any of the other anions. Cl^- produced the highest performing material, achieving 190 F g^{-1} at 10 mV s^{-1} in 1 M KOH and had moderate nitrogen incorporation (3.42 at%). Overall, this study indicates that the anion has substantial influence on the physicochemical properties of the material, allowing an additional level of tailoring.

Received 14th August 2020,
Accepted 25th November 2020

DOI: 10.1039/d0ma00601g

rsc.li/materials-advances

1. Introduction

With their high charge–discharge rate ($< 1\text{--}3 \text{ s}$), large power density ($> 10 \text{ kW kg}^{-1}$), long cycle life ($> 10^5$ cycles), low cost and natural abundance of electrode precursor materials (*e.g.*, biomass), carbon based supercapacitors (CSC) are a fundamental technology for addressing future energy needs. Despite these advantages, CSC still suffer from lower energy density and cell voltage than lithium-ion batteries. To address this issue, a range of strategies have been investigated to enhance the energy density and working voltage of supercapacitors without sacrificing power density or cycle life. These are, (i) structural improvements,

such as pore size tailoring in hierarchical porous carbons,¹ (ii) incorporation of transition metal oxides² or (iii) physicochemical enhancements *via* heteroatom doping.^{3,4} Tailoring the porosity enhances electrolyte accessibility,¹ while transition metal oxides increase capacitance *via* their pseudocapacitive characteristics. Heteroatom doping with N, B, O, P and S has been shown to increase capacitance through providing sites for pseudocapacitance,⁴ increasing wettability,^{5,6} creating lattice defects for charge storage,⁷ and enhancing electrical conductivity.^{4,8}

Among the heteroatom doped carbon materials, nitrogen is by far the most prominent dopant for its enhancement of electronic conductivity,⁷ improved surface wettability through hydrophilic groups and increased surface roughness,⁵ as well as ease of incorporation into carbon materials through a wide range of methods.³ Incorporating pyridinic, pyridonic, pyrrolic and oxidized $-\text{NO}_x$ groups has been suggested to create sites where reversible faradaic redox reactions (pseudocapacitance) can occur, providing additional charge storage sites.^{3,9} Quaternary or graphitic nitrogen is also possible and suggested to promote the transport of electrons through the carbon lattice, reducing resistance.³

Nitrogen doped carbon materials have also shown promise in enlarging the cell voltage window, with Chi *et al.* showing

^a Discipline of Chemistry, University of Newcastle, Callaghan, NSW 2308, Australia.
E-mail: kenneth.latham@unu.edu.au

^b Umeå University, Department of Chemistry, SE-90 187, Umeå, Sweden

^c Institute of Future Transport and Cities, Coventry University, Priory Street,
Coventry CV1 5FB, UK

^d Department of Chemistry, University of Cambridge, Lensfield Road, Cambridge,
CB2 1EW, Cambridge, UK

^e Department of Engineering, University of Cambridge, 17 Charles Babbage Road,
CB3 0FS, Cambridge, UK

^f School of Engineering, University of Newcastle, Callaghan, NSW 2308, Australia

† Electronic supplementary information (ESI) available. See DOI: 10.1039/d0ma00601g



excellent stability and capacitance retention of a nitrogen doped carbon surface after a 10 000-cycle floating-like test between 3 and 4 V using an organic electrolyte (1 M TEABF₄/PC).¹⁰ For comparison, the upper cut off voltage for CSC using organic electrolytes is generally between 2.5–2.7 V.¹¹ As a result, nitrogen doped materials have consistently outperformed their non-doped counterparts when used in supercapacitors.

Several approaches exist for synthesizing nitrogen doped carbon materials, such as chemical vapor deposition,^{12,13} plasma⁵ and arc discharge,¹⁴ pyrolysis of nitrogen containing precursors^{15,16} and hydrothermal carbonization.^{17,18} However, it is important to ensure that the production method is sustainable and environmentally friendly. For this reason, hydrothermal carbonization, a low temperature wet carbonization method,¹⁹ is preferred and excels in producing highly nitrogen doped carbon materials with a range of nitrogen functionalities.^{17,18,20,21}

Using hydrothermal carbonization, nitrogen doped carbon materials can be synthesized by directly carbonizing nitrogen containing precursor (*e.g.*, tannin,²² microalgae,^{23,24} chitosan^{21,25}) or reacting a carbonaceous precursor (*e.g.*, glucose, biomass) in the presence of a nitrogen containing agent (*e.g.*, ammonium salt,^{17,26} ammonia,¹⁸ urea,²⁷ glycine²⁸). The first approach is simpler, although this provides limited control over the degree of nitrogen incorporation, precursor materials or the types of nitrogen groups formed. The second approach provides a greater level of flexibility with the nitrogen level and type being independent of the main carbon source. For instance, Park *et al.* demonstrated that the type and amount of nitrogen functional groups could be easily adjusted through modifying ratio between the nitrogen and non-nitrogen containing precursors as well as the reaction temperature.²⁹ Additionally, nitrogenation agents containing multiple elements (*e.g.*, (NH₄)₂HPO₃^{26,30}) can further enhance the material beyond the influence of nitrogen *via* synergistic co-doping effects. For instance, phosphorus has a higher n-type behavior and stronger electron expansion ability than nitrogen, which can generate additional charge storage areas and improve electrical conductivity.³¹ Phosphorus doped carbons have also been shown to have larger stable voltage windows.³² Chlorine functionalization was shown by Pinkert *et al.* to increase the specific capacitance by 27% over a non-doped carbon at a cycle rate of 10 mV s⁻¹ in EMIBF₄ from -3.4 V to 3.4 V.³³ Thus, co-doping is a way to further enhance the carbon surface beyond nitrogen doping. It is for this reason that ammonium salts represent an interesting group of compounds for enhanced hydrothermal doping, which have already been shown to co-dope carbon materials *via* hydrothermal carbonization.³⁴ However, former studies examining the hydrothermal carbonization of glucose, fructose and sucrose with (NH₄)₂SO₄ and (NH₄)₂HPO₄ indicated that the ammonium counter-ion (anion), has an influence on the hydrothermal reaction.³⁰ This study found vast differences in yield and pH between the (NH₄)₂SO₄, (NH₄)₂HPO₄ and non-doped hydrothermally carbonized materials.³⁰

In this study we have examined the influence of four ammonium salts, (NH₄)₂SO₄, (NH₄)₂HPO₄, NH₄Cl and (NH₄)₂Fe(SO₄)₂·6H₂O on the hydrothermal carbonization of sucrose and supercapacitor performance. Extensive surface studies were conducted *via* XPS

and synchrotron based NEXAFS to understand the differences in surface functionalities on the hydrothermal materials and activated hydrothermal materials. These surface studies were correlated with in-depth electrochemical studies using step potential electrochemical spectroscopy (SPECS), which can identify the different charge storage mechanisms occurring on these materials.^{35,36}

2. Experimental

2.1 Hydrothermal carbon preparation

A series of five 350 mL deionized water solutions were prepared *via* the following method. Each solution contained 23.94 g of sucrose (Sigma Aldrich; 99%) and a single ammonium salt dissolved in the solution, with the exception of the control solution that contained no salt. The ammonium salts were selected for their stability in the hydrothermal system. Although relatively common, ammonium carbonate and ammonium nitrate were not selected as they could produce large amounts of CO, CO₂ and NO_x in the reactor, which could be a safety hazard. The amount of ammonium salt was 9.25 g for ammonium sulfate ((NH₄)₂SO₄, Sigma Aldrich; 99%), 9.25 g for ammonium phosphate dibasic ((NH₄)₂HPO₄, Sigma Aldrich 99%), 27.45 g for ammonium iron(II) sulfate hexahydrate ((NH₄)₂Fe(SO₄)₂·6H₂O, Sigma Aldrich 99%) and 7.50 g for ammonium chloride (NH₄Cl, Sigma Aldrich 99.5%). All solutions contained 0.2 M of ammonium salt, other than ammonium chloride which contained 0.4 M. This ensured an equivalent nitrogen concentration for each salt. The solutions were sealed in separate poly(tetrafluoroethylene)-lined reactors for hydrothermal synthesis at 200 °C over 4 hours. After reaction, the reactors were left to cool naturally in the oven before filtering the resultant suspension. The obtained hydrothermal carbon was first washed with Milli-Q water before being washed using acetone in a Soxhlet extractor at a cycle rate of one cycle per 30 min for 24 h. The washing procedure removed any non-chemically bound residual compounds that had dried on the surface from the liquid solution. The solid product remaining after washing was denoted here as H-Con for the pure sucrose control sample, and H-SO, H-PO, H-Cl, H-Fe for the ammonium sulfate, phosphate, chloride, and ferrous sulfate respectively.

2.2 Activation of hydrothermal carbons

The dried hydrothermal carbons were activated by adding 1 g of hydrothermal carbon to 4 mL of 85% H₃PO₄ (Sigma Aldrich; 85%) and annealing at 600 °C for one hour under a constant 50 mL min⁻¹ flow of N₂. After heating, the activated carbons were washed with water to remove any acid residues until a neutral pH was achieved. The activated samples are denoted with an A-, such as A-SO for H-SO that has been activated.

2.3 Yield, morphology, surface area and porosity

Yield was calculated based on the following formula:

$$\text{Yield (\%)} = \frac{\text{Weight of hydrochar (g)}}{\text{Weight of sucrose (g)}}$$

The morphology of the hydrothermal carbons was examined with a Philips XL30 scanning electron microscope (SEM) at



three different magnifications, 500 \times , 3000 \times and 24 000 \times . Hydrothermal carbon samples were mounted on aluminium stubs with double sided carbon tape and gold coated at four different angles to ensure complete coverage of gold.

Surface area and porosity was examined by gas adsorption using a Micromeritics ASAP 2020 Surface Area and Porosity Analyzer. A representative 0.10 g sample of the carbon material was degassed under vacuum at 110 °C for 2 hours prior to analysis. An adsorption isotherm was then determined over the partial pressure range of 10^{-7} –1 using N₂ gas as the adsorbate at 77 K. The specific surface area was extracted from the gas adsorption data using the linearized BET isotherm in the partial pressure range $0.05 < P/P_0 < 0.3$.³⁷

2.4 Surface characterization

2.4.1 X-ray photoelectron spectroscopy. X-ray Photoelectron Spectroscopy (XPS) measurements were performed using a Thermo ESCALAB250i X-ray photoelectron spectrometer in an ultrahigh vacuum (1×10^{-9} Pa) system equipped with a hemispherical analyzer. The samples were mounted on indium foil, degassed and transferred into the analysis chamber. An unmonochromated Mg K α X-ray source of incident energy 1253.7 eV was applied to generate core excitation. The spectrometer was calibrated assuming the binding energy (BE) of the Au4f_{7/2} line at 84.0 eV with respect to the Fermi level. The standard deviation for the BE values was 0.1 eV. Survey scans (1 eV per step) were obtained in the 0–1100 eV range and used to determine the atomic percentage (at%) of carbon, oxygen, nitrogen and phosphorus atoms on the surface of the samples by the area under the peak at 133 eV, 285 eV, 400 eV and 530 eV for phosphorus, carbon, nitrogen and oxygen, respectively. The C1s, O1s and N1s peaks were deconvoluted based on previously reported peak positions.³⁸

2.4.2 NEXAFS spectroscopy. Prior to analysis, both the hydrothermal and activated carbon samples were pressed into separate indium foil pieces (3 mm \times 10 mm). The samples were then mounted onto the gold plate of a Prevac drain current only sample holder using carbon tape. The NEXAFS spectroscopy measurements were performed in the ultrahigh vacuum (UHV) end station attached to the Soft X-ray Spectroscopy Beamline at the Australian Synchrotron.³⁹ Nearly perfectly linearly polarized photons ($P \approx 1$) from an APPLE II elliptical polarized undulator X-ray source with high spectral resolution ($E/\Delta E \leq 10\,000$) were focused to a beam size of $\sim 100 \mu\text{m}^2$ onto samples within the UHV chamber. Photon flux at the carbon edge was $\sim 5 \times 10^{10}$ photons per s per 200 mA of ring current. The UHV chamber, which has a base pressure lower than 2×10^{-10} mbar, was equipped with a channeltron detector that measured X-ray adsorption *via* partial electron yield at the magic angle of 54.7°, which is measured between the surface plane of the sample and the direction vector of the incident linearly polarized light beam.

The recorded signal was normalized to the incident photon flux using the stable monitor method, in which the sample signal is compared consecutively to clean reference samples and the time variation in flux is measured *via* a gold mesh.⁴⁰

The normalized spectra were scaled by setting the pre-edge signal (280 eV for carbon and 380 eV for nitrogen) to zero and the post edge (320 eV for carbon, 415 eV for nitrogen) to 1. The photon energy was calibrated by measuring the NEXAFS spectrum of HOPG simultaneously to the sample signal and normalizing to the excitation peak at 291.65 eV.

To understand the effects of synchrotron radiation beam damage on the hydrothermal carbons, a sequence of scans was initially measured on the same spot until significant changes were observed in the carbon and nitrogen K-edge spectra. The scan time was subsequently restricted to an appropriate interval below this (~ 0.5 s per 0.1 eV step) in which beam damage during a single scan was negligible.

2.4.3 Peak locations and difference analysis in NEXAFS.

Post analysis treatment of the NEXAFS data was performed using the Athena package in Demeter version 0.9.25.⁴¹ The position of transitions related to various functionalities in each of the four series was based on transition locations that were previously published on hydrothermal carbons and literature sources. A more in-depth analysis of these locations can be found in our previous work.^{17,42}

2.5 Electrochemical testing

2.5.1 Electrode preparation. The activated hydrothermal carbon, carbon black conductive agent (Cabot, Vulcan XC72R) and polytetrafluoroethylene (PTFE, powder, Fluka Chemika) binder were dry mixed in the weight ratio of 85:10:5 using a mortar and pestle. To this mixture, 5 mL of *N*-methyl-2-pyrrolidone (NMP, anhydrous, 99.5%, Sigma Aldrich) was added to form an ink. The working electrode was prepared by dropping two 40 μL aliquots of ink onto the end of a separate clean 13 mm diameter stainless steel rod and left to dry at ambient temperature.

The counter electrode was prepared using a similar method except the activated hydrothermal carbon was replaced with carbon black conductive agent (Cabot, Vulcan XC72R) giving a weight ratio of 95:5 carbon black to PTFE. Additionally, 160 μL of the counter electrode ink was drop cast onto the stainless steel rod to ensure a greater mass of electrode material than the working electrode. The working electrodes weighed $\sim 4 \text{ mg cm}^{-1}$, whereas the counter electrodes weighed $\sim 11.8 \text{ mg cm}^{-1}$. This ensured that any limitations in the system were the result of the working electrode. Both electrodes were dried under air at 60 °C for 8 hours, the average mass of active material contained in the working electrodes was $3.3 \pm 0.2 \text{ mg cm}^{-1}$.

2.5.2 Electrochemical cell construction. The two coated stainless-steel rods (electrodes, working and counter) were inserted into a 13 mm diameter perfluoroalkoxy alkane (PFA) T-junction Swagelok cell from opposite ends, with two layers of porous paper inserted between the ends. The third perpendicular port was left open. The two stainless steel electrodes were then pressed together at 1.7 MPa using a hydraulic press to ensure good cell connectivity, before the electrodes were secured (screwed) into place. The cell was then filled with electrolyte (1 M KOH), sealed and left to equilibrate for ~ 12 h. After equilibration, the reference electrode (saturated calomel electrode; SCE; Radiometer Analytical) was inserted into the perpendicular port of the



Swagelok cell and sealed in place with Parafilm. Unless otherwise stated, all potentials stated are with respect to the SCE. Both the cyclic voltammetry (CV) and step potential electrochemical spectroscopy (SPECS) experiments were conducted using an Ivium-Stat multichannel electrochemical analyser controlled by Ivium-software V2.419.

2.5.3 Cyclic voltammetry. Each hydrothermal carbon was cycled between -0.3 V to -0.9 V vs. SCE in 1 M KOH using a scan rate of 10 mV s $^{-1}$ for 1000 cycles. This was carried out to establish reversible cycling behaviour, however reversible cycling behaviour was typically achieved within the first 50 cycles. This range was found to be the most stable for the activated materials.

The specific capacitance (C_s , F g $^{-1}$) was calculated from the CV curves according to the following equation:

$$C_s = \left(\int I dV \right) / (vm\Delta V)$$

where C_s is the specific capacitance (F g $^{-1}$), I is the response current (A), V is the applied potential, ΔV is the potential window (V), v is the potential scan rate (mV s $^{-1}$), and m is the mass of the electroactive material on the electrode (g).

2.5.4 Step potential electrochemical spectroscopy. After the electrode was cycled 1000 times and reversible behaviour was observed, the following protocol was then used to conduct the SPECS experiment. Starting at a working electrode potential of -0.3 V, a potential step of -0.025 V was applied to the working electrode and held for 300 s to equilibrate. During this time the current flow was measured as a function of time. This step process was repeated until the working electrode potential had reached the minimum potential of -0.9 V. The potential step process was then reversed by stepping in $+0.025$ V increments, with the same rest time, until the maximum potential was reached (-0.3 V). In total, the electrode completed one complete charge/discharge cycle. The time base for data collection was 0.5 s. Analysis was performed by fitting the current response at each potential step to two electrochemical double layer processes, diffusion limited processes and a residual process. More in-depth information about the SPECS experiment for electrochemical capacitors and the analysis of the collected data can be found in ref. 35, 36, 43 and 44.

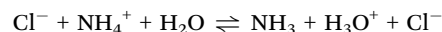
3. Results and discussion

3.1 Morphology, yield, pH, surface area and porosity

Before discussing the experimental results, it is important to indicate how ammonium salts can influence the hydrothermal

reaction. These are through: (i) shifting the solution pH, (ii) the presence of reactive NH $_4^+$ and, (iii) the catalytic behaviour of the ammonium counter-ion. Each of these factors have been separately shown to influence the reaction. For instance, at low pH the breakdown of the precursor into soluble compounds is promoted, however the formation of solid carbon is suppressed.^{34,45} This also occurs at high pH,³⁴ with the ideal range for hydrothermal reaction sitting between pH 3 to 7. Introducing NH $_4^+$ results in the formation of ammonia and subsequently amines.¹⁷ These amines catalyse some of the reaction pathways in hydrothermal carbonization, forming pyrrole and pyridines.^{17,28,38} Lastly, Ming *et al.* demonstrated that the presence of Na $_2$ SO $_4$ increased the conversion efficiency for glucose from 3.8% to 32.9%, but was only 5% in the presence of NaCl,⁴⁶ indicating that the anion in salts also has an important role in hydrothermal reactions.

The influence of the aforementioned factors can be observed in Table 1, where the yield of hydrochar and solution pH change with different counter-ions. The differences in initial pH are due to how each ammonium salt disassociates in solution, for instance, the ammonium ion disassociates in ammonium chloride *via* the following equilibrium:



The same equilibrium occurs in ammonium sulfate and ammonium ferrous sulfate, although the lower pH in ferrous sulfate suggests that the reaction is shifted further to the right than in sulfate and chloride. For ammonium phosphate, additional pathways are possible:



The creation of H $_2$ PO $_4$ and H $_3$ PO $_4$ has a buffering effect within the solution, increasing the pH. The pH decreased for every sample during hydrothermal carbonization, indicating the formation of acidic species. For saccharides, this tends to be formic, lactic, acetic, propanoic and levulinic acid.³⁰ The addition of (NH $_4$) $_2$ SO $_4$, NH $_4$ Cl and (NH $_4$) $_2$ Fe(SO $_4$) $_2$ lowered the pH to around 1, however this is unlikely to be the result of increased organic acid production as the pK $_a$ of the above-mentioned organic acids are from 3.75 to 4.87, indicating that these compounds are likely to be in their protonated form. This is more likely to be due to the formation of H $_2$ SO $_4$ and HCl in the liquid as NH $_4^+$ is consumed by the carbonization process, leaving free SO $_4^{2-}$ and Cl $^-$ ions.

Table 1 Yield, yield after washing with acetone, initial pH, final pH, H $^+$ produced and particle size for each of the hydrothermal carbons

Sample	Yield (%)	Yield - AW ^a (%)	pH initial	pH final	H $^+$ produced (mM)	Average particle diameter (μm)
H-Con	29.6 \pm 1.0	22.1 \pm 0.02	5.72 \pm 0.02	2.35 \pm 0.02	4.4 \pm 0.2	4.57 \pm 1.15
H-SO	45.5 \pm 0.5	44.7 \pm 0.02	5.36 \pm 0.02	0.92 \pm 0.02	121.6 \pm 5.6	4.12 \pm 0.95
H-Cl	28.8 \pm 1.1	27.8 \pm 0.01	5.15 \pm 0.01	1.12 \pm 0.01	75.4 \pm 1.7	4.01 \pm 1.77
H-Fe	42.6 \pm 0.7	41.2 \pm 0.01	3.02 \pm 0.01	1.08 \pm 0.03	83.2 \pm 5.8	3.46 \pm 1.34
H-PO	35.2 \pm 0.2	34.7 \pm 0.02	8.58 \pm 0.02	2.44 \pm 0.04	3.7 \pm 0.3	NA ^b

^a Yield remaining after washing with acetone. ^b Particle size was not calculated as individual particles were not present.



The observed differences in hydrochar yield are most likely from the ammonium counter ion, and not the influence of NH_4^+ or the influence of pH. NH_4^+ concentration was the same for all of the hydrothermal solutions and the pH is similar in H-Cl and H-Fe, but the yield of H-Cl is 28.8% whereas H-Fe is 42.6%. The reason for the increase in yield for H-SO and H-Fe has been ascribed to the presence of SO_4^{2-} in the solution, which has been shown to accelerate the carbonization process from the saccharide to intermediates.⁴⁶ Additionally, Ming *et al.* found that the addition of Na^+ and SO_4^{2-} to the hydrothermal solution in the form of Na_2SO_4 created aromatic species in the solution that were not observed without salt addition.⁴⁶ This suggested that Na_2SO_4 could play a catalytic role in accelerating the conversion of intermediates to carbon materials. However, they did not examine whether these aromatics were present with NaCl or NaNO_3 added, thus it is unclear if the effect is from the anion (SO_4^{2-}) or the cation (Na^+). Considering that we have compared the anions in this study and seen that SO_4^{2-} increases the yield of over Cl and PO_4^{3-} , this indicates that SO_4^{2-} is the reason for the increased yield. Additionally, Lu *et al.*, found that the presence of NaCl increased the conversion to intermediates, but not the final yield of carbon material,⁴⁷ further demonstrating that it is the presence of SO_4^{2-} and not Na^+ that promotes the formation of carbon.

Changing the counter-ion also resulted in morphological differences (Fig. 1). H-Con, H-Cl, H-Fe and H-SO all displayed spherical particles with an average diameter of $3.46 \pm 1.34 \mu\text{m}$ for H-Fe to $4.57 \pm 1.15 \mu\text{m}$ for H-Con, whereas H-PO consisted of a conjoined structure. Interestingly, the incorporation of $(\text{NH}_4)_2\text{FeSO}_4$ in H-Fe also resulted in the formation of 'flower-like' structures appearing alongside the commonly observed spherical particles.

The surface area (Table 2) for the non-activated materials was $< 21 \text{ m}^2 \text{ g}^{-1}$ for all samples, a typical result for hydrothermally derived carbon from saccharides as they contain almost no porosity.

Activation with H_3PO_4 consists of two equally important stages, impregnation and carbonization. Increasing the impregnation or carbonization time increases the surface area of the materials, as impregnation time allows H_3PO_4 to penetrate further into the material and carbonization time allows for micro porosity development.⁴⁸ The activation process (Fig. 1(g) and (h)) roughened the surface, chipping off sections of the spherical particles and forming small cracks. This can easily be observed by comparing the spherical particle of H-SO in Fig. 1(f) with the activated spherical particle of A-SO in Fig. 1(h). Specific surface area increased in the order of A-Fe ($667 \text{ m}^2 \text{ g}^{-1}$), A-SO ($738 \text{ m}^2 \text{ g}^{-1}$), A-Con ($1517 \text{ m}^2 \text{ g}^{-1}$), A-Cl ($1968 \text{ m}^2 \text{ g}^{-1}$) and A-PO ($2133 \text{ m}^2 \text{ g}^{-1}$). The differences in surface area suggest that the influence of the anion on the chemical and morphological structure of the hydrothermal carbon has an impact on the activation process. As the impregnation time and carbonization time was kept the same between the samples, it suggests that physicochemical properties that the counter-ion changed had an influence on the ability of H_3PO_4 to be impregnated into the structure prior to carbonization. Both of the samples that had SO_4^{2-} ions (H-SO and H-Fe) reported

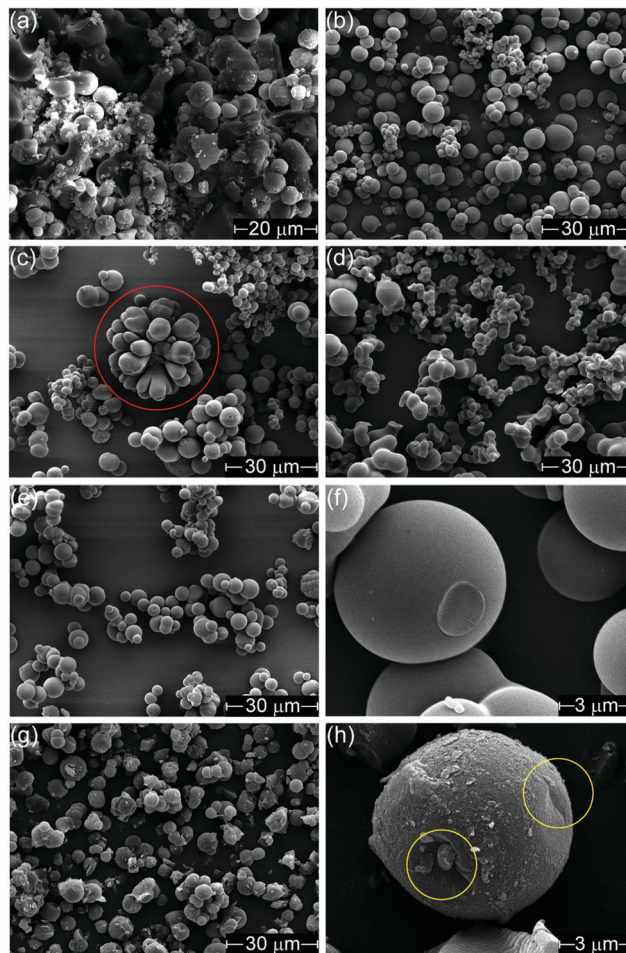


Fig. 1 SEM images of (a) H-Con at 4000 \times (b) H-Cl (c) H-Fe with flower shape outlined in red, (d) H-PO, (e) H-SO, (f) H-SO at 24 000 \times , (g) A-SO and, (h) A-SO at 24 000 \times with removed sections outlined in yellow. Images were taken at 3000 \times magnification, unless otherwise specified.

Table 2 BET surface area and micropore surface area for the hydrothermal and activated carbons

Sample	BET surface area ($\text{m}^2 \text{ g}^{-1}$)	Micropore surface area ($\text{m}^2 \text{ g}^{-1}$)
H-Con	21	2.5
H-SO	3	0.5
H-Cl	16	2.7
H-Fe	3	0.6
H-PO	10	3.6
A-Con	1517	320
A-SO	738	172
A-Cl	1968	384.8
A-Fe	667	160.5
A-PO	2133	419.3

low surface areas, suggesting that although SO_4^{2-} increases the yield, it is detrimental for H_3PO_4 activation.

These differences are further highlighted in the pore size distribution data (Fig. 2), where A-Con contains a small distribution of pores between 10–22 Å, A-Cl and A-PO have broader distributions and A-Fe and A-SO have limited porosity development.





Fig. 2 Pore size distribution of the activated materials. Incremental pore volume is displayed via the columns and cumulative pore volume represented by the grey line.

Overall, the differences in surface area and morphology clearly indicate that the counter ion influences the physicochemical properties of the hydrothermal carbon, which subsequently influences the impact that the activation agent has on the carbon structure. The variation here also indicates that not all ammonium salts are beneficial for creating the high surface area carbon materials required in supercapacitors.

3.2 Surface functionality Identified by XPS and NEXAFS

Surface functionality plays a critical role in supercapacitors, with functional groups providing positive and negative benefits depending on their chemistry and electrolyte used.^{49,50} Tables 3 and 4 display the XPS results for the hydrothermal and activated materials, with C1s, O1s and N1s peak deconvolutions. The presence of NH_4^+ was not detected at 406 eV in the N1s spectra, indicating that the nitrogen groups on the surface are incorporated into the carbon structure.

The N-doped carbons contained less oxygen surface functionalities than H-Con, a trend that is attributed to the occurrence of Maillard reactions forming various nitrogen groups instead of furans in the hydrothermal reactor.^{17,28} The type of counter ion also influenced the amount of nitrogen present on the surface.

Table 3 XPS analysis of the hydrothermal carbons for the survey, C1s, N1s and O1s scans

	Carbon							Total	Other
	C=C	C-C, C-H _x	C-OH	-C=O	-COOH	-CO ₃			
H-Con	23.75	28.75	17.76	7.43	2.63	1.42	81.75		
H-SO	30.67	27.35	11.61	4.66	2.15	1.18	77.62	1.11 S	
H-Cl	27.82	31.59	8.76	4.60	2.99	1.10	76.87	0.63 Cl	
H-Fe	17.35	29.05	15.77	6.88	4.36	1.44	74.83	1.17 S	
H-PO	24.03	35.49	11.71	3.63	2.07	0.75	77.68	0.7 P	

	Nitrogen				Oxygen			
	Pyridinic	Amine	Pyrroles	Quaternary	Total	O=C	O-C	Total
H-Con	0.00	0.00	0.00	0.00		9.92	8.36	18.28
H-SO	1.47	2.03	1.49	0.54	5.53	9.43	6.31	15.74
H-Cl	0.53	0.82	1.92	0.15	3.42	12.36	6.72	19.08
H-Fe	0.46	1.24	0.70	0.52	2.92	10.74	10.33	21.07
H-PO	1.47	1.86	1.45	0.38	5.16	7.21	9.24	16.45

Table 4 XPS analysis of the activated hydrothermal carbons for the survey, C1s, N1s and O1s scans

	Carbon							Total	Phosphorus
	C=C	C-C, C-H _x	C-OH	-C=O	-COOH	-CO ₃			
A-Con	40.35	19.52	8.09	4.64	2.77	2.96	78.35	4.15	
A-SO	31.68	22.20	8.07	5.49	3.39	3.37	74.2	2.7	
A-Cl	35.11	19.49	8.58	4.56	3.45	2.96	74.15	4.06	
A-Fe	36.13	17.79	9.46	3.90	3.04	2.71	73.02	4.85	
A-PO	42.01	12.80	9.71	3.95	3.18	3.07	74.72	3.69	

	Nitrogen				Oxygen			
	Pyridinic	Amine	Pyrroles	Quaternary	Total	O=C	O-C	Total
A-Con						7.32	10.19	17.5
A-SO	1.45	0.85	2.24	0.77	5.31	6.38	11.23	17.79
A-Cl	0.74	0.22	1.30	0.77	3.02	10.09	7.43	17.52
A-Fe	1.28	0.53	1.92	0.45	4.18	8.67	9.29	17.96
A-PO	0.61	0.28	1.10	0.39	2.37	12.32	6.90	19.22

For instance, $(\text{NH}_4)_2\text{HPO}_4$ achieved the highest incorporation at 5.16 at% (H-PO), while $(\text{NH}_4)_2\text{FeSO}_4$ produced the lowest at 2.92 at% (H-Fe). Additionally, the ratio of nitrogen groups varies based on the counter ion suggesting a nitrogen functionality can be tuned *via* changing the counter ion. This can be seen by looking at the concentrations of each group between the samples, but is more easily demonstrated if the concentrations are converted into a ratio based on one of the groups. For instance, normalizing to pyridinic groups, the ratio between functionalities in H-SO is $1_{\text{pyridinic}} : 1.37_{\text{amine}} : 1.01_{\text{pyrrolic}} : 0.36_{\text{quaternary}}$, whereas H-Cl is $1_{\text{pyridinic}} : 0.67_{\text{amine}} : 1.60_{\text{pyrrolic}} : 0.13_{\text{quaternary}}$. Thus, Cl^- produces significantly less amine groups on the surface but a higher number of pyrroles than SO_4^{2-} . The normalized results for each sample is presented in the ESI† for reference. Sample H-Cl is particularly promising as the formation of amine groups is suppressed compared to pyrroles and pyridinic groups. Amine groups are undesirable for supercapacitors, as these groups are potentially more likely (less energy required) to be cleaved from the surface compared to ring nitrogen, leading to cell degradation under cycling.



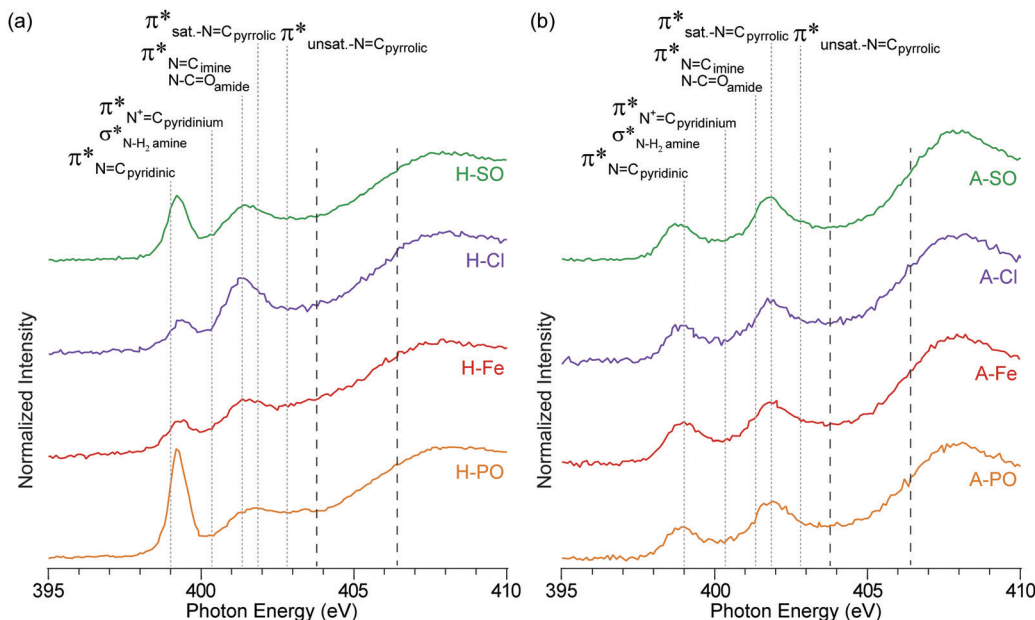


Fig. 4 NEXAFS nitrogen K-edge spectra of (a) hydrothermal carbons and (b) activated hydrothermal carbons. Functional group locations for the main $N1s \rightarrow \pi^*$ and $N1s \rightarrow \sigma^*$ are added for reference and based on previous NEXAFS work on hydrothermal carbons.¹⁷ The long dashed lines represent the position of the arctangent step function at 403.9 eV and 406.5 eV.

The second difference at 288.5 eV, associated with $C1s \rightarrow \pi^*$ transitions on COOH , $\text{C}=\text{O}_{\text{amides}}$, and $\text{C}=\text{C}_{\text{pyrroles}}$,⁵² displays an observable increase in intensity for all of the nitrogenated carbons compared to H-Con. As the concentration of COOH groups does not vary significantly in the XPS, the increased peak height at 288.5 eV is attributed to the presence of amides and pyrroles. These groups can also be observed in the nitrogen K-edge spectra (Fig. 4) at 401.3 eV, confirming their presence. Overall, the carbon K-edge indicates that the hydrothermal N-doped materials have a similar carbon structure with variations in the concentration of functional groups, further demonstrating that tuning the surface functionality is possible through changing the anion.

After activation with H_3PO_4 , the sharp peaks associated with oxygen/nitrogen functionalities between 286.5 to 290 eV are almost completely removed, while peaks associated with aromatic groups increase. The loss of oxygen functionality and increased aromatic concentration after activation is a common occurrence, which is escalated with increasing temperature.⁴² What is interesting is the peak at 288.5 eV (COOH , $\text{C}=\text{O}_{\text{amides}}$, and $\text{C}=\text{C}_{\text{pyrroles}}$ ⁵²) is still present in the N-doped carbons, but not in A-Con. This suggests that pyrroles have survived the activation process, as they are also observed in the nitrogen K-edge spectra (Fig. 4) at 401.3 eV.

In addition to pyrrolic groups (401.3 eV), the nitrogen K-edge spectra also indicates the presence of pyridinic groups (399 eV). The first peak at 399 eV exclusively occurs from $\text{C}=\text{N}$ $N1s \rightarrow \pi^*$ transitions on pyridinic groups, whereas the second peak is related to a combination of $N1s \rightarrow \pi^*$ transitions on imine (401.3 eV), amide (401.3 eV) and pyrrolic groups (401.9 eV). In H-PO a third peak can be also observed at 402.9 eV, related to unsaturated $\text{N}=\text{C}_{\text{pyrrolic}}$ structures.

The influence of the counter ion is again displayed here, with a clear difference in peak heights for the pyridinic groups at 399 eV ($\text{PO}_4^{3-} > \text{SO}_4^{2-} > \text{Cl}^- > \text{Fe}^{2+} + \text{SO}_4^{2-}$) and pyrrolic groups at 401.3 eV ($\text{Cl}^- > \text{SO}_4^{2-} > \text{PO}_4^{3-} > \text{Fe}^{2+} + \text{SO}_4^{2-}$). The differences in intensity here between the samples match the concentration differences in the XPS results.

The intensity of the nitrogen peaks decreased after activation, indicative of nitrogen loss, although the degree of nitrogen loss was not equally shared across all nitrogen functionalities. Pyridinic groups, especially in A-PO and A-SO, lost considerable intensity after activation, compared to pyrroles. This difference could stem from the weakly basic nature of pyridine, which would have accepted a proton from H_3PO_4 and increased its reactivity. From a previous study pyridinic groups appeared to also be impacted more by temperature than pyrrolic.⁴² This loss was further escalated when H_3PO_4 was used as an activation agent.

3.3 Electrochemical analysis

To understand if the counter ion influences electrochemical performance, the activated samples underwent cyclic voltammetry and SPECS analysis. KOH was selected as the electrolyte due to it being utilized commonly in the literature allowing comparison and its theoretical ability to allow nitrogen based pseudocapacitance reactions.³⁸

3.3.1 Cyclic voltammetry (CV). The specific capacitance followed the surface area, with the highest surface area material providing the highest amount of charge storage (Fig. 5). However, despite having the highest surface area A-PO was unstable under cycling, resulting in a large capacitance drop over the 1000 cycles from 330 F g^{-1} to 173 F g^{-1} . The reason for this instability is typically attributed to irreversible reactions between surface functional groups and the electrolyte leading to electrode





Fig. 5 (a) Cyclic voltammograms at the 500th cycle before the SPECS experiment, (b) capacitance per cycle over 1000 cycles, 10 mV s⁻¹ in 1 M KOH. The SPECS experiment was conducted at the 500th cycle, hence the slight discontinuity in the capacitance at cycle 500. Decomposition of the electrode/electrolyte was observed for A-PO.

decomposition. A study by He *et al.* examining the impact of cycling on oxygen functionalities in KOH found that C–OH was converted into C=O and then quinone with an overall loss of oxygen from the surface from 26.77 at% to 14.85 at%.⁵³ The surface of A-PO has the highest oxygen content (19.22 at%), with the highest number of C=O groups (12.32 at%) and the lowest nitrogen content. However, the CV's in He *et al.*'s work did not show the shifting redox peaks that are observed in the CV of A-PO over 1000 cycles (Fig. 6). Unfortunately, it is unclear what functional groups is associated with these redox peaks or if these peaks have been observed previously as studies on supercapacitors typically don't report failures. However, it does further demonstrate that the ammonium counter ion appears to have an impact, although negative, on the electrochemical performance of this material.



Fig. 6 Cyclic voltammetry of A-PO at different cycles.

A-Cl provided the highest capacitance and cycle stability (194.7 F g⁻¹), followed by A-Con (155.4 F g⁻¹), A-Fe (89.8 F g⁻¹) and A-SO (67.7 F g⁻¹). The results for A-Cl and A-Con are in the same range of a study by Misnon *et al.* using 1 M KOH, where they achieved from 110 to 210 F g⁻¹ for their activated carbon from oil palm kernel.⁵⁴ Apart from A-PO which has a clearly unstable surface characteristics, it is difficult to see the influence of the counter ion or nitrogen in a CV as the capacitance stored in the electrical double layer is so large. Thus, SPECS was employed to break down the different capacitance contributions.

3.3.2 Step potential electrochemical spectroscopy. In the SPECS method, current is measured as a function of time after a series of potential steps are applied to the working electrode over the full potential window. The SPECS current or *i*-*t* transient at each potential step is a result of the diffusion-limited processes (diffusion) and electrical double layer formation at the geometric surface of the electrode (DL_{1 surface}), as well as the surface of the pores in the bulk of the electrode (DL_{2 pores}). This method has been used to differentiate between different charge storage mechanisms and to characterize the kinetic behavior of the material or electrode under study over a full range of sweep rates. Further information on this method can be found in these studies.^{43,44}

The advantage of the SPECS method is that a synthetic voltammogram for each charge storage mechanism can be generated, since the current response for each potential step has been deconvoluted into its individual components.^{43,44} Fig. 7(a) and (b) show the synthetic voltammograms for A-Con sample at the cycle rates of 5 and 50 mV s⁻¹ respectively. As expected, the average current increases with an increasing sweep rate. It can be seen that the synthetic voltammogram for the capacitive current at the porous surface area is greater than the capacitive current at the geometric surface area at the





Fig. 7 Synthetic voltammogram obtained from the SPECS data for A-H, comparing behavior at different sweep rates of (a) 5 mV s^{-1} and (b) 50 mV s^{-1} .

low sweep rate of 5 mV s^{-1} , as at lower sweep rate there is more time for ions to cover the surface of inner pores. While at higher sweep rate the contribution of geometric capacitive process ($\text{DL}_{1 \text{ surface}}$) is greater than the capacitive process at the porous surface area ($\text{DL}_{2 \text{ pores}}$). Fig. 7(a) and (b) also indicate that overall the capacitive processes are the dominant charge storage mechanisms and diffusion limited processes have a slight contribution in charge storage mechanisms. This is due to the nature of carbon-based electrode materials, which mainly store charge through the capacitive processes. The origin of the diffusion limited processes in carbon-based electrodes is from diffusion into restrictive pores.

The synthetic voltammograms generated from the SPECS analysis can also be used to determine the specific capacitance as a function of cycle rate. The added benefit here is that because the SPECS data was deconvoluted into individual processes, from which the contributions made by each process to the overall voltammogram have been calculated, the capacitance of the individual processes can be calculated vs cycle rate. Fig. 8 shows the total specific capacitance and the specific capacitance of

the geometric ($\text{DL}_{1 \text{ surface}}$), porous ($\text{DL}_{2 \text{ pores}}$) surfaces, the diffusion limited capacitance, and the residual capacitance, obtained from the SPECS data as a function of the sweep rate. A-PO has not been included in the SPECS analysis as the material was unstable under cycling.

In all four samples, $\text{DL}_{1 \text{ surface}}$ displays limited change at different cycle rates, due to being associated with the geometric surface area and thus has no ion transport limitations. The higher capacitance for $\text{DL}_{1 \text{ surface}}$ in A-Con and A-Cl is likely due to having a higher geometric surface area for the material. The contribution from $\text{DL}_{2 \text{ pores}}$ follows the specific surface area, with higher surface areas producing a larger contribution from $\text{DL}_{2 \text{ pores}}$, simply due to having higher total pore volume. However, it is important to consider the pore size distribution (Fig. 2) and how that impacts on the capacitance contribution from $\text{DL}_{2 \text{ pores}}$ and the diffusion limited capacitance.

The bare ion radii of K^+ is 1.33 \AA ($d = 2.66 \text{ \AA}$) and the solvated ion radii is 3.31 \AA ($d = 6.62 \text{ \AA}$),⁵⁵ therefore only a single solvated ion will fit in the pores between 3 to 6 \AA . Considering that the SPECS experiments were performed in an aqueous electrolyte, it is likely that all of the ions are in their solvated state, unlike in organic and ionic liquids where desolvated ions are more common because of their weaker polarity (solvent) and charge density (ions). Despite the solvated ion fitting into these smaller pores, this restrictive environment reduces the likelihood that an ion will be pushed into these pores. Thus, only at lower cycle rates when there is sufficient time for an ion to travel down these pores do they become active. This is the reason why $\text{DL}_{2 \text{ pores}}$ starts to plateau at lower sweep rates, as the double layer is accessing the maximum surface area available to it at this point. It is also at this point that diffusion limited capacitance starts to increase significantly, as it represents the mass transport of ions into increasingly smaller pores. The higher level of diffusion and lower $\text{DL}_{2 \text{ pores}}$ in A-Con compared to A-Cl is directly related to its porosity, with almost 65% of the porosity in A-Con located in pores smaller than 15 \AA , compared to A-Cl where only 44% is located in this region. This is further demonstrated when examining the ratio between the capacitance contributions of $\text{DL}_{1 \text{ surface}}$ and $\text{DL}_{2 \text{ pores}}$ for A-Con and A-Cl. As $\text{DL}_{1 \text{ surface}}$ is almost identical in A-Con and A-Cl, we can consider that the geometric surface is similar in both materials, however in A-Con the capacitance from $\text{DL}_{2 \text{ pores}}$ is about 1.5 times higher at 50 mV s^{-1} , whereas it is 3.3 times higher in A-Cl at 50 mV s^{-1} . Even at lower sweep rates, where smaller pores will become accessible, A-Cl still has a higher ratio (5.0 at 5 mV s^{-1}) than A-Con (3.2 at 5 mV s^{-1}). Thus, the surface of A-Cl is far more accessible than A-Con.

The residual current and diffusion are higher in A-Con compared to the nitrogen doped materials, suggesting that this surface is a lot more electrochemically active at slower scan rates. The residual represents kinetically slow redox processes that are ongoing beyond the duration of each potential step. These processes or electrode instabilities become apparent after the electrode is left to rest at a fixed potential for an extended period of time. Thus, the residual can be considered to be similar to a floating test across the full potential window.





Fig. 8 SPECS analysis for (a) A-Con, (b) A-SO, (c) A-Cl, and (d) A-Fe. The y-axis has been split at 300 F g^{-1} (dashed line) to allow easier comparison between samples. A-PO was not included as it was unstable under cycling.

Thus, the combination of a more electrochemically active surface (higher residual) and restricted pores (higher diffusion) results in the total performance of A-Con being higher at cycle rates $< 1 \text{ mV s}^{-1}$ than the nitrogen doped materials. However, if the residual current is not zero, then there are potential stability issues with the system. Thus, A-Con is likely to fail earlier than A-Cl due to these instabilities in the electrode surface.

Examining whether the incorporation of nitrogen into these materials has enhanced their performance is difficult, as the surface area and porosity is vastly different between each of the ammonium salt added materials and the control. What is observed here is that the ammonium counter ion has an influence on the hydrothermal reaction, which subsequently influences the ability for the hydrothermal carbon to increase its surface area under activation and these impacts are displayed in the electrochemistry. However, it is interesting that again we have a nitrogen doped material that does not display clear redox peaks in the CV, which seemingly contradicts the literature which continuously states that nitrogen introduces pseudocapacitance through redox active sites. In fact studies examining nitrogen

doped carbon materials don't appear to display any clear redox behaviour in their cyclic voltammetry data,^{16,20,56} unlike the electrochemical redox behaviour of the quinone group which is easily observable.⁵⁷ What might be occurring here is that nitrogen is providing a localised charge storage site on the surface of the material, which is electrically connected to the carbon and the electrical double layer. Thus, a specific redox peak will not be observable. Additionally, the benefit of nitrogen may come from its other suggested properties, such as wettability,⁵ electrode stability and lower resistance.⁷

To examine if nitrogen doping does indeed have an impact on the resistance, electrochemical impedance spectroscopy (EIS) was used to examine A-S, A-SO, A-Cl and A-Fe with the Nyquist plot presented in Fig. 9. Each of the samples displayed the typical shape of a semicircle followed by a tail. Instead of fitting each of the EIS to RC circuits, a physical interpretation of the plot was performed based on the examination of EIS for supercapacitors by Mei *et al.*⁵⁸ The electrode resistance is represented as the distance between 0 and the first data point on the $\text{Re}(Z)$ axis and the bulk electrolyte resistance is represented as the diameter of the semicircle. The sum of these





Fig. 9 EIS of A-Con, A-SO, A-Cl and A-Fe.

two properties represents the internal resistance of the electrode. Calculating the internal resistance resulted in the nitrogenated materials having a slightly lower resistance (A-SO 13.77 Ω , A-Cl 15.72 Ω , A-Fe 14.01 Ω) than A-Con (16.82 Ω), indicating that the suggestion that nitrogen improves conductivity is likely to be valid here as well.

These benefits could be the reason why the residual current is far lower in the nitrogen doped materials compared to A-Con, as the incorporation of nitrogen creates a more stable electrochemical surface. Overall, further examination of how nitrogen contributes to capacitance through the examination of pseudocapacitance, conductivity, wettability and electrochemical testing is needed to understand its impact.

4. Conclusions

In this work we examined how the anion in ammonia influences the hydrothermal reaction, nitrogen incorporation levels, physico-chemical properties, ability to be activated and supercapacitor performance. Morphologically, SO_4^{2-} and Cl^- created spherical particles between 1–5 μm , while PO_4^{3-} consisted of conjoined spherical particles and $\text{Fe}((\text{SO}_4)_2)^{2+}$ consisted of spherical and ‘flower like’ structures. Chemically, the degree of nitrogen incorporation varied between 2.92 at% for $\text{Fe}((\text{SO}_4)_2)^{2-}$ to 5.53 at% for SO_4^{2-} , as well as the ratio between the pyridinic, pyrrolic, amine and quaternary nitrogen groups that are formed when introducing ammonia into the hydrothermal reaction. The nitrogen K-edge NEXAFS results indicated that PO_4^{3-} and SO_4^{2-} created a higher level of pyridinic groups, which were subsequently removed upon activation with H_3PO_4 . This was stipulated to be caused by the weakly basic nature of pyridinic groups compared to pyrrolic groups, making them more susceptible for attack with H_3PO_4 .

The surface area after activation also varied dramatically from 667 $\text{m}^2 \text{g}^{-1}$ for $\text{Fe}((\text{SO}_4)_2)^{2-}$ to 2133 $\text{m}^2 \text{g}^{-1}$ for PO_4^{3-} with the pore size distribution widening in the carbon that were synthesized in the presence of ammonium salts. Supercapacitor performance followed surface area, however, the highest surface area material produced from PO_4^{3-} was unstable under cycling, losing over half of its capacitance over the first 500 cycles. The SPECS analysis revealed that the addition of ammonium chloride to the hydrothermal solution created a hydrothermal carbon that produced a beneficial pore distribution after activation, with a higher degree of the surface accessible to the electrolyte than the material without salt addition. SPECS also revealed that although the ammonium salt added materials displayed lower pseudocapacitance contributions, the surface was considerably more stable than the material without salt addition. Overall, this study demonstrates that the ammonium counter ion influences the pH, hydrothermal yield, particle size and degree of nitrogen incorporation into the hydrothermal carbon. These impacts flow through into the activated carbon, with the most prominent being the difference in surface area after activation. As surface area is one of the major factors determining supercapacitor performance, selecting the correct counter-ion is crucial to enhancing the electrochemical performance of nitrogen doped hydrothermal carbons for supercapacitors.

Conflicts of interest

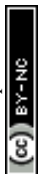
There are no conflicts to declare.

Acknowledgements

KGL acknowledges the University of Newcastle for a PhD scholarship. This research was undertaken on the Soft X-ray beamline at the Australian Synchrotron, part of ANSTO. The XPS work was performed in part at the Materials Node of the Australian National Fabrication Facility, a company established under the National Collaborative Research Infrastructure Strategy to provide nano and microfabrication facilities for Australia's researchers.

References

- 1 T. Liu, F. Zhang, Y. Song and Y. Li, Revitalizing carbon supercapacitor electrodes with hierarchical porous structures, *J. Mater. Chem. A*, 2017, 5(34), 17705–17733.
- 2 Y. Ji, Y. Deng, F. Chen, Z. Wang, Y. Lin and Z. Guan, Ultrathin Co_3O_4 nanosheets anchored on multi-heteroatom doped porous carbon derived from biowaste for high performance solid-state supercapacitors, *Carbon*, 2020, 156, 359–369.
- 3 Y. Deng, Y. Xie, K. Zou and X. Ji, Review on recent advances in nitrogen-doped carbons: preparations and applications in supercapacitors, *J. Mater. Chem. A*, 2016, 4(4), 1144–1173.
- 4 J. P. Paraknowitsch and A. Thomas, Doping carbons beyond nitrogen: an overview of advanced heteroatom doped carbons



- with boron, sulphur and phosphorus for energy applications, *Energy Environ. Sci.*, 2013, **6**(10), 2839.
- 5 K. Terpilowski, A. E. Wiącek and M. Jurak, Influence of nitrogen plasma treatment on the wettability of polyether-etherketone and deposited chitosan layers, *Adv. Polym. Technol.*, 2018, **37**(6), 1557–1569.
 - 6 S. C. H. Kwok, J. Wang and P. K. Chu, Surface energy, wettability, and blood compatibility phosphorus doped diamond-like carbon films, *Diamond Relat. Mater.*, 2005, **14**(1), 78–85.
 - 7 Y. Taluja, B. SanthiBhushan, S. Yadav and A. Srivastava, Defect and functionalized graphene for supercapacitor electrodes, *Superlattices Microstruct.*, 2016, **98**, 306–315.
 - 8 Y. Zhang and M. Antonietti, Photocurrent generation by polymeric carbon nitride solids: an initial step towards a novel photovoltaic system, *Chem. – Asian J.*, 2010, **5**(6), 1307–1311.
 - 9 J. Biemolt, I. M. Denekamp, T. K. Slot, G. Rothenberg and D. Eisenberg, Boosting the Supercapacitance of Nitrogen-Doped Carbon by Tuning Surface Functionalities, *ChemSusChem*, 2017, **10**(20), 4018–4024.
 - 10 Y. W. Chi, C. C. Hu, H. H. Shen and K. P. Huang, New Approach for High-Voltage Electrical Double-Layer Capacitors Using Vertical Graphene Nanowalls with and without Nitrogen Doping, *Nano Lett.*, 2016, **16**(9), 5719–5727.
 - 11 C.-F. Liu, Y.-C. Liu, T.-Y. Yi and C.-C. Hu, Carbon materials for high-voltage supercapacitors, *Carbon*, 2019, **145**, 529–548.
 - 12 Y. Xia and R. Mokaya, Synthesis of Ordered Mesoporous Carbon and Nitrogen-Doped Carbon Materials with Graphitic Pore Walls via a Simple Chemical Vapor Deposition Method, *Adv. Mater.*, 2004, **16**(17), 1553–1558.
 - 13 F. Wu, C. Wang, H.-Y. Hu, M. Pan, H.-F. Li, N. Xie, Z. Zeng, S. Deng, M. H. Wu, K. Vinodgopal and G.-P. Dai, Controlled synthesis of N-doped carbon microspheres from melamine-based carbon by chemical vapor deposition, *Chem. Phys. Lett.*, 2019, **730**, 124–129.
 - 14 T. V. Pham, J. G. Kim, J. Y. Jung, J. H. Kim, H. Cho, T. H. Seo, H. Lee, N. D. Kim and M. J. Kim, High Areal Capacitance of N-Doped Graphene Synthesized by Arc Discharge, *Adv. Funct. Mater.*, 2019, **29**(48), 1905511.
 - 15 F. Liu, Z. Wang, H. Zhang, L. Jin, X. Chu, B. Gu, H. Huang and W. Yang, Nitrogen, oxygen and sulfur co-doped hierarchical porous carbons toward high-performance supercapacitors by direct pyrolysis of kraft lignin, *Carbon*, 2019, **149**, 105–116.
 - 16 S. Li and Z. Fan, Nitrogen-doped carbon mesh from pyrolysis of cotton in ammonia as binder-free electrodes of supercapacitors, *Microporous Mesoporous Mater.*, 2019, **274**, 313–317.
 - 17 K. G. Latham, M. I. Simone, W. M. Dose, J. A. Allen and S. W. Donne, Synchrotron based NEXAFS study on nitrogen doped hydrothermal carbon: Insights into surface functionalities and formation mechanisms, *Carbon*, 2017, **114**, 566–578.
 - 18 F. Schipper, S. Kubo and T.-P. Fellerger, Nitrogen-doped porous carbon via ammonothermal carbonization for supercapacitors, *J. Sol-Gel Sci. Technol.*, 2018, **89**(1), 101–110.
 - 19 M. M. Titirici and M. Antonietti, Chemistry and materials options of sustainable carbon materials made by hydrothermal carbonization, *Chem. Soc. Rev.*, 2010, **39**(1), 103–116.
 - 20 Z. Xu, J. Chen, X. Zhang, Q. Song, J. Wu, L. Ding, C. Zhang, H. Zhu and H. Cui, Template-free preparation of nitrogen-doped activated carbon with porous architecture for high-performance supercapacitors, *Microporous Mesoporous Mater.*, 2019, **276**, 280–291.
 - 21 X. Tong, Z. Chen, H. Zhuo, Y. Hu, S. Jing, J. Liu and L. Zhong, Tailoring the physicochemical properties of chitosan-derived N-doped carbon by controlling hydrothermal carbonization time for high-performance supercapacitor application, *Carbohydr. Polym.*, 2019, **207**, 764–774.
 - 22 F. L. Braghiroli, V. Fierro, M. T. Izquierdo, J. Parmentier, A. Pizzi and A. Celzard, Nitrogen-doped carbon materials produced from hydrothermally treated tannin, *Carbon*, 2012, **50**(15), 5411–5420.
 - 23 M. Sevilla, W. Gu, C. Falco, M. M. Titirici, A. B. Fuertes and G. Yushin, Hydrothermal synthesis of microalgae-derived microporous carbons for electrochemical capacitors, *J. Power Sources*, 2014, **267**, 26–32.
 - 24 M. Ren, T. Zhang, Y. Wang, Z. Jia and J. Cai, A highly pyridinic N-doped carbon from macroalgae with multifunctional use toward CO₂ capture and electrochemical applications, *J. Mater. Sci.*, 2018, **54**(2), 1606–1615.
 - 25 Q. Wu, G. Zhang, M. Gao, L. Huang, L. Li, S. Liu, C. Xie, Y. Zhang and S. Yu, N-doped porous carbon from different nitrogen sources for high-performance supercapacitors and CO₂ adsorption, *J. Alloys Compd.*, 2019, **786**, 826–838.
 - 26 C. Wang, Y. Zhou, L. Sun, P. Wan, X. Zhang and J. Qiu, Sustainable synthesis of phosphorus- and nitrogen-co-doped porous carbons with tunable surface properties for supercapacitors, *J. Power Sources*, 2013, **239**, 81–88.
 - 27 S. Guo, Y. Gao, Y. Wang, Z. Liu, X. Wei, P. Peng, B. Xiao and Y. Yang, Urea/ZnCl₂ in situ hydrothermal carbonization of Camellia sinensis waste to prepare N-doped biochar for heavy metal removal, *Environ. Sci. Pollut. Res. Int.*, 2019, **26**(29), 30365–30373.
 - 28 N. Baccile, G. Laurent, C. Coelho, F. Babonneau, L. Zhao and M.-M. Titirici, Structural Insights on Nitrogen-Containing Hydrothermal Carbon Using Solid-State Magic Angle Spinning ¹³C and ¹⁵N Nuclear Magnetic Resonance. The, *J. Phys. Chem. C*, 2011, **115**(18), 8976–8982.
 - 29 H. Park, P. P. M. Schlekler, Z. Liu, N. Kowalew, T. Stamm, R. Schlögl, R.-A. Eichel, S. Heumann and J. Granwehr, Insights into Water Interaction at the Interface of Nitrogen-Functionalized Hydrothermal Carbons. The, *J. Phys. Chem. C*, 2019, **123**(41), 25146–25156.
 - 30 K. G. Latham, A. Ferguson and S. W. Donne, Influence of ammonium salts and temperature on the yield, morphology and chemical structure of hydrothermally carbonized saccharides, *SN Appl. Sci.*, 2019, **1**(1), 54.
 - 31 H. Liu, M. Wang, D. D. Zhai, X. Y. Chen and Z. J. Zhang, Design and theoretical study of carbon-based supercapacitors especially exhibiting superior rate capability by the synergistic effect of nitrogen and phosphor dopants, *Carbon*, 2019, **155**, 223–232.
 - 32 D. Hulicova-Jurcakova, A. M. Puziy, O. I. Poddubnaya, F. Suarez-Garcia, J. M. Tascon and G. Q. Lu, Highly stable



- performance of supercapacitors from phosphorus-enriched carbons, *J. Am. Chem. Soc.*, 2009, **131**(14), 5026–5027.
- 33 K. Pinkert, M. Oschatz, L. Borchardt, M. Klose, M. Zier, W. Nickel, L. Giebeler, S. Oswald, S. Kaskel and J. Eckert, Role of surface functional groups in ordered mesoporous carbide-derived carbon/ionic liquid electrolyte double-layer capacitor interfaces, *ACS Appl. Mater. Interfaces*, 2014, **6**(4), 2922–2928.
- 34 K. G. Latham, G. Jambu, S. D. Joseph and S. W. Donne, Nitrogen Doping of Hydrochars Produced Hydrothermal Treatment of Sucrose in H₂O, H₂SO₄, and NaOH, *ACS Sustainable Chem. Eng.*, 2014, **2**(4), 755–764.
- 35 K. G. Latham and S. W. Donne, Nitrogen Doped Heat-Treated and Activated Hydrothermal Carbon: Examination of Electrochemical Performance Using Step Potential Electrochemical Spectroscopy, *J. Electrochem. Soc.*, 2018, **165**(11), A2840–A2848.
- 36 M. F. Dupont and S. W. Donne, Separating faradaic and non-faradaic charge storage contributions in activated carbon electrochemical capacitors using electrochemical methods, *J. Electrochem. Soc.*, 2015, **162**(7), A1246–A1254.
- 37 S. Brunauer, P. H. Emmett and E. Teller, Adsorption of Gases in Multimolecular Layers, *J. Am. Chem. Soc.*, 1938, **60**(2), 309–319.
- 38 K. G. Latham, A. Rawal, J. M. Hook and S. W. Donne, Molecular structures driving pseudo-capacitance in hydrothermal nanostructured carbons, *RSC Adv.*, 2016, **6**(16), 12964–12976.
- 39 E. Gann, A. T. Young, B. A. Collins, H. Yan, J. Nasiatka, H. A. Padmore, H. Ade, A. Hexemer and C. Wang, Soft X-ray scattering facility at the Advanced Light Source with real-time data processing and analysis, *Rev. Sci. Instrum.*, 2012, **83**(4), 045110.
- 40 B. Watts, L. Thomsen and P. C. Dastoor, Methods in carbon K-edge NEXAFS: Experiment and analysis, *J. Electron Spectrosc. Relat. Phenom.*, 2006, **151**(2), 105–120.
- 41 B. Ravel and M. Newville, ATHENA, ARTEMIS, HEPHAESTUS: data analysis for X-ray absorption spectroscopy using IFEFFIT, *J. Synchrotron Radiat.*, 2005, **12**(Pt 4), 537–541.
- 42 K. G. Latham, W. M. Dose, J. A. Allen and S. W. Donne, Nitrogen doped heat treated and activated hydrothermal carbon: NEXAFS examination of the carbon surface at different temperatures, *Carbon*, 2018, **128**, 179–190.
- 43 M. Forghani and S. W. Donne, Modification of the Step Potential Electrochemical Spectroscopy Analysis Protocol to Improve Outcomes, *J. Electrochem. Soc.*, 2019, **166**(13), A2727–A2735.
- 44 M. Forghani, H. Mavroudis, J. McCarthy and S. W. Donne, Electroanalytical characterization of electrochemical capacitor systems using step potential electrochemical spectroscopy, *Electrochim. Acta*, 2020, **332**.
- 45 J. Liang, Y. Liu and J. Zhang, Effect of Solution pH on the Carbon Microsphere Synthesized by Hydrothermal Carbonization, *Procedia Environ. Sci.*, 2011, **11**, 1322–1327.
- 46 J. Ming, Y. Wu, G. Liang, J.-B. Park, F. Zhao and Y.-K. Sun, Sodium salt effect on hydrothermal carbonization of biomass: a catalyst for carbon-based nanostructured materials for lithium-ion battery applications, *Green Chem.*, 2013, **15**(10), 2722–2726.
- 47 X. Lu, J. R. Flora and N. D. Berge, Influence of process water quality on hydrothermal carbonization of cellulose, *Biore-sour. Technol.*, 2014, **154**, 229–239.
- 48 H. Teng, T.-S. Yeh and L.-Y. Hsu, Preparation of activated carbon from bituminous coal with phosphoric acid activation, *Carbon*, 1998, **36**(9), 1387–1395.
- 49 L.-Z. Fan, S. Qiao, W. Song, M. Wu, X. He and X. Qu, Effects of the functional groups on the electrochemical properties of ordered porous carbon for supercapacitors, *Electrochim. Acta*, 2013, **105**, 299–304.
- 50 H. Liu, H. Song, X. Chen, S. Zhang, J. Zhou and Z. Ma, Effects of nitrogen- and oxygen-containing functional groups of activated carbon nanotubes on the electrochemical performance in supercapacitors, *J. Power Sources*, 2015, **285**, 303–309.
- 51 H. Sun, G. Zhou, S. Liu, H. M. Ang, M. O. Tade and S. Wang, Nano-Fe(0) encapsulated in microcarbon spheres: synthesis, characterization, and environmental applications, *ACS Appl. Mater. Interfaces*, 2012, **4**(11), 6235–6241.
- 52 X. Q. Yang, J. Chen, P. D. Hale, T. Inagaki, T. A. Skotheim, Y. Okamoto, L. Samuelson, S. Tripathy, K. Hong, M. F. Rubner and M. L. denBoer, A FTIR and NEXAFS study of polypyrrole Langmuir-Blodgett films, *Synth. Met.*, 1989, **28**(1–2), 251–256.
- 53 Y. He, Y. Zhang, X. Li, Z. Lv, X. Wang, Z. Liu and X. Huang, Capacitive mechanism of oxygen functional groups on carbon surface in supercapacitors, *Electrochim. Acta*, 2018, **282**, 618–625.
- 54 I. I. Misnon, N. K. M. Zain, R. A. Aziz, B. Vidyadharan and R. Jose, Electrochemical properties of carbon from oil palm kernel shell for high performance supercapacitors, *Electrochim. Acta*, 2015, **174**, 78–86.
- 55 E. R. Nightingale, Phenomenological Theory of Ion Solvation. Effective Radii of Hydrated Ions. The, *J. Phys. Chem.*, 1959, **63**(9), 1381–1387.
- 56 T. Wei, X. Wei, Y. Gao and H. Li, Large scale production of biomass-derived nitrogen-doped porous carbon materials for supercapacitors, *Electrochim. Acta*, 2015, **169**, 186–194.
- 57 C. Han, H. Li, R. Shi, T. Zhang, J. Tong, J. Li and B. Li, Organic quinones towards advanced electrochemical energy storage: recent advances and challenges, *J. Mater. Chem. A*, 2019, **7**(41), 23378–23415.
- 58 B.-A. Mei, O. Munteshari, J. Lau, B. Dunn and L. Pilon, Physical Interpretations of Nyquist Plots for EDLC Electrodes and Devices. The, *J. Phys. Chem. C*, 2017, **122**(1), 194–206.

