

Cite this: *RSC Adv.*, 2018, 8, 9970

Efficient biocatalytic stereoselective reduction of methyl acetoacetate catalyzed by whole cells of engineered *E. coli*

Y. H. Cui,^a P. Wei,^{ac} F. Peng,^a M. H. Zong^{ac} and W. Y. Lou^{id} *^{abc}

Asymmetric synthesis of chiral β -hydroxy esters, the key building blocks for many functional materials, is currently of great interest. In this study, the biocatalytic anti-Prelog reduction of methyl acetoacetate (MAA) to methyl-(*R*)-3-hydroxybutyrate ((*R*)-HBME) was successfully carried out with high enantioselectivity using the whole cell of engineered *E. coli*, which harbored an AcCR (carbonyl reductase) gene from *Acetobacter* sp. CCTCC M209061 and a GDH (glucose dehydrogenase) gene from *Bacillus subtilis* 168 for the *in situ* regeneration of the coenzyme. Compared with the corresponding wild strain, the engineered *E. coli* cells were proved to be more effective for the bio-reduction of MAA, and afforded much higher productivity. Under the optimized conditions, the product e.e. was >99.9% and the maximum yield was 85.3% after a reaction time of 10 h, which were much higher than those reported previously. In addition, the production of (*R*)-HBME increased significantly by using a fed-batch strategy of tuning pH, with a space-time yield of approximately 265 g L⁻¹ d⁻¹, thus the issue in previous research of relatively low substrate concentrations appears to be solved. Besides, the established bio-catalytic system was proved to be feasible up to a 150 mL scale with a large-scale relatively high substrate concentration and selectivity. For further industrial application, these results open a way to use of whole cells of engineered *E. coli* for challenging higher substrate concentrations of β -ketone esters enantioselective reduction reactions.

Received 29th January 2018
Accepted 27th February 2018

DOI: 10.1039/c8ra00883c

rsc.li/rsc-advances

1. Introduction

Currently, asymmetric reduction of β -ketone esters with whole-cell biocatalysts, especially using engineered *E. coli* cells, has attracted much attention from the viewpoint of many recognized journals.^{1,2} Compared with asymmetric chemical processes, biotransformation processes of chiral β -hydroxy esters production afford several advantages, such as milder reaction operation conditions (e.g., ambient temperature and pressure), no need to use toxic chemicals and expensive heavy metal catalysts.³ Also, chiral β -hydroxy esters can be obtained by isolated carbonyl reductase,^{4,5} but expensive reducing co-enzymes are necessary in the reaction. These drawbacks restrict its application in industrial-scale production.

Chiral β -hydroxy esters are the key building blocks for many fine chiral pharmaceuticals, agrochemicals, flavors and other

functional materials.⁶ For example, it was demonstrated that methyl-3-hydroxybutyrate (HBME) could be a better ingredients for anti-AD drugs,⁷ and it was reported that dementia was the fourth largest fatal disease, globally.⁸ In addition, some researchers also found that HBME improved the learning and memory of the mice, then it should be further developed as novel drug candidates against memory decline.⁹ Besides, it also has been reported that HBME has the ability to inhibit osteoporosis induced by ovariectomy, and it also has been proved to be safe and effective for anti-osteoporosis.¹⁰ Moreover, HBME has a great potential to be developed as a biodegradable implant material for its polymers was listed as one of the most promising biodegradable implant material.^{11,12}

The asymmetric bio-reduction of 3-oxo esters using resting whole cells, especially for engineered *E. coli* cells, is well accepted to be a safe, economical, and mild method to prepare for chiral β -hydroxy ester.^{13,14} The strategy of adding carbohydrate during the reaction can be adopted for *in situ* regeneration of co-enzymes with whole cells. Compared with the wild strain, the engineered *E. coli* offers many advantages for its higher expression level, cheaper medium components, sample enzyme systems and purification procedures. Here a constructing genetic engineering microorganism, which harboring an AcCR (EC 1.1.1.184) gene from *Acetobacter* sp. CCTCC M209061 and a GDH (EC 1.1.1.47) gene from *Bacillus subtilis* 168 for the *in situ*

^aLab of Applied Biocatalysis, School of Food Science and Technology, South China University of Technology, Guangzhou 510640, Guangdong, China. E-mail: wyLou@scut.edu.cn; Tel: +86-20-22236669

^bGuangdong Province Key Laboratory for Green Processing of Natural Products and Product Safety, South China University of Technology, Guangzhou 510640, Guangdong, China

^cSchool of Chemistry and Chemical Engineering, South China University of Technology, Guangzhou 510640, Guangdong, China



regeneration of the coenzyme, was applied for catalytic reduction of β -ketone esters.^{15,16} In our previous study, we found that the application of the engineered *E. coli* constructed by our group was a little restricted by its relatively low tolerance toward high concentrations of β -ketone esters, which limited its industrial production apparently.¹⁶ Aiming at that problem, the biocatalytic reduction of MAA as a model substrate was carried out in the following study and a series of strategy was adopted for improving the productivity.

To date, the biocatalytic anti-Prelog stereoselectivity reduction of MAA to (*R*)-HBME using engineered *E. coli* cells has remained largely untapped, with only few published accounts covered it, where some biocatalysts including Baker's yeast,¹⁷ *Acetobacter pasteurianus* GIM1.158 cells,¹⁸ carbonyl reductase from *Acetobacter* sp. CCTCC M209061 were tested and achieved product *e.e.* and yields of (*R*)-HBME were unsatisfactory.¹⁹ In the case of the baker's yeast as biocatalyst, although the optimum substrate concentration was around 100 mM, the product was (*S*)-HBME, the yield was only 32.8% and the product *e.e.* only recorded 86.3%. In addition, the whole cells of engineered *E. coli* (the alcohol dehydrogenase of *L. brevis* and the NAD⁺-dependent format dehydrogenase gene from *Mycobacterium vaccae* N10 were coexpressed) gave a relatively low optical substrate concentration (around 40 mM) with (*R*)-HBME was produced.³¹ The *Acetobacter pasteurianus* GIM1.158 cells afforded the product yield of 92.9% with over 97.2% product *e.e.* in the biocatalytic reduction, but the substrate-tolerant concentration was still as low as 10 mM. For industrial-scale application, the yield and enantioselectivity of (*R*)-HBME need to be further improved in the aqueous phase (Scheme 1).

In the present study, a wild strain of *Acetobacter* sp. CCTCC M209061 and an engineered *E. coli* mentioned above were compared for their potential for bio-reduction of MAA to valuable (*R*)-HBME. The engineered *E. coli* cells were found to be more active in catalyzing the bioreduction of MAA, and for the first time were applied for the asymmetric synthesis of the prochiral β -hydroxy ester deeply. The effects of several crucial variables on the microbial cell-based bio-reduction were explored systematically. Besides, for the production of a high yield of (*R*)-HBME, the glucose acid as a by-product was explored and a fed-batch strategy of tuning pH by the corresponding alkaline compound was adopted with an excellent effectiveness. Also, the efficient biocatalytic process for MAA reduction to

(*R*)-HBME with whole cells of engineered *E. coli* was evaluated on a preparative scale, and showing a huge potential application in industrialization.

2. Results and discussion

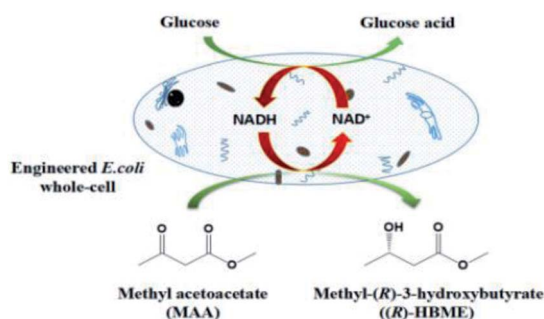
2.1 Effects of key reaction conditions on the biocatalytic reduction of MAA

For further improving the results of the biocatalytic reduction including the initial reaction rate, the yield and the enantioselectivity, it is of great significant to study the influences of some key conditions on the reaction, such as buffer pH, reaction temperature, and the biocatalyst dosage *etc.* In addition, the comparison of the time course of the bioreduction between resting *E. coli* whole-cells and the corresponding wild strain under optimized conditions was also conducted.

2.1.1 The effects of initial buffer pH on the biocatalytic reactions. It is well recognized that buffer pH performs a key role in the course of biocatalytic reactions using resting whole-cells,²² from where influence mainly come the following aspects: (a) affects the activity and enantioselectivity of the enzymes involved in the reaction. (b) Affects the regeneration of the co-enzyme of which in turn influences the bio-reduction of substrates.²³ (c) Alter the ionic state of substrates, products and enzymes involved in the reaction. (d) Affects the binding of enzyme's active site to substrates, especially for several iso-enzymes with different enantioselectivities.²⁴ Therefore, the biocatalytic reaction was conducted at different reaction buffer pH to find an optimum pH value for the reduction.

As illustrated in Fig. 1a, buffer pH exerted a notable impact on both the initial reaction rate and the maximum yield. The initial rate and the yield increased with pH changes from 4.0 to 6.5, the maximal initial reaction rate was appeared on pH 7.0, and the maximal yield of 99.0% were achieved within pH from 6.5 to 7.0 after a reaction time of 8.5 h, however, it decreased slightly with the rise of pH from 7.0 to 8.0. Overall, the engineered *E. coli* cells exhibited good catalytic performances within the range of pH from 6.5–8.0, indicating that there was no problem with the activity of carbonyl reductase and glucose dehydrogenase within that pH range. Moreover, excellent selectivities (>99.9%) were observed within the assayed buffer pH, indicating that the pH has no effect on its enantioselectivity. Taking into account the initial rate and yield, the optimum buffer pH for the bioreduction of MAA to (*R*)-HBME was 7.0.

2.1.2 The effects of the temperature on the biocatalytic reactions. Temperature has an significant impact on the activity, selectivity and stability of the most enzymes and the status of dynamic equilibrium of a reaction as well. Therefore, the bioreduction of MAA was conducted at different temperatures. As illustrated in Fig. 1b, the reaction temperature effects on yield was slight within the examined temperature range between 20 and 45 °C, but the reaction time was reduced significantly with the increasing temperature (*e.g.*, 24 h at 20 °C vs. 7 h at 30 °C). In spite of the yield changed a little with the rise of the temperature within examined scope, the initial reaction rate was influenced significantly, and it increased fast with



Scheme 1 The asymmetric reduction of MAA catalyzed by engineered *E. coli* cells in buffer.



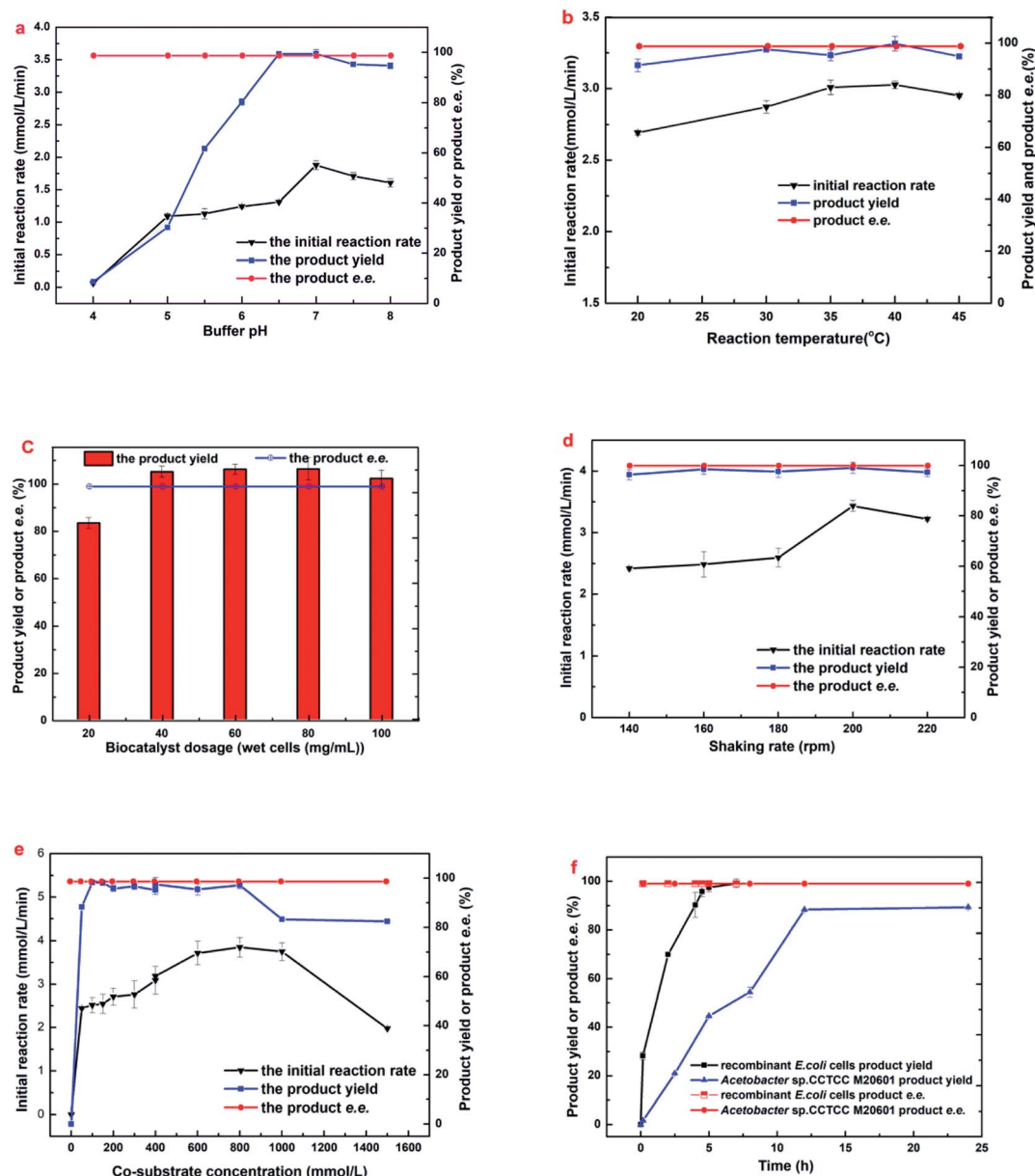


Fig. 1 Effects of (a) initial buffer pH, (b) biocatalyst dosage, (c) temperature, (d) shaking rate, (e) cosubstrate concentration and (f) reaction time on (R)-HBME synthesis. The following general conditions applied unless otherwise stated: 150 mM MAA, 400 mM glucose, 60 mg mL⁻¹ microbial cells, 4 mL phosphate buffer (200 mM, pH 7.0), 40 °C, 180 rpm; (a) buffers used: pH 4.0–6.0 citrate buffer (200 mM), pH 6.0–8.0 phosphate buffer (200 mM), 30 °C, 7 h; (b) gradual increase of temperature from 20 to 45 °C with corresponding periods of 24, 12, 10, 6, and 6.5 h; (c) gradual increase of cell dosage from 20 to 100 mg mL⁻¹ microbial cells (wet weight) with corresponding periods of 24, 8, 6, 5, and 4 h; (d) gradual increase of shaking rate from 140 to 220 rpm with corresponding periods of 10, 8, 6, 4.5, and 6.5 h; (e) gradual increase of co-substrate concentration from 0 to 1500 mg mL⁻¹ glucose, 200 rpm, and 500 mM glucose was added every 2 h in the case of 1000 mM and 1500 mM glucose when product yield and e.e. was recorded; (f) the two strains subjected to its optimized conditions, respectively: engineered *E. coli* at pH 7.0, 40 °C, 200 rpm and *Acetobacter* sp. CCTCC M209061 strain at pH 5.5, 35 °C, 200 rpm.²⁷

increasing the temperature from 20 to 40 °C (0.181 mol L⁻¹ h⁻¹ were achieved), however, a clear drop was appeared when further raised in the reaction temperature (above 40 °C), which could be illustrated by the partial inactivation of the enzymes at a higher temperature. Besides, the product e.e. remain unchanged and kept over 99.9% within the examined scope, indicating that the temperature has no effect on its

enantioselectivity. Taking into account the initial rate and the yield, 40 °C was adopted as the optimum conditions for the bioreaction.

2.1.3 The effects of the cell dosage on the biocatalytic reactions. For sake of saving biocatalyst for the biggest possible and making the bioreduction process more economically competitive, the effects of the cell dosage on biocatalytic reactions were conducted, even though it has not always been taken



seriously as a key variable for the whole cell-based biocatalytic reaction. Fig. 1c showed the impact of the cell dosage on (*R*)-HBME asymmetric synthesis. As illustrated in Fig. 1c, the maximum yield is only 82.3% at 0.02 g mL⁻¹ (wet weight) microbial cells, it was likely that the cell's ability of asymmetric reduction on MAA were exhausted when the reaction reaching its equilibrium, however, the yield reached above 96.0% at 0.04 g mL⁻¹ microbial cells. Continue to increase the cell dosage from 0.04 g mL⁻¹ to 0.1 g mL⁻¹, the *E. coli* cell dosage exerted no significant effect on the maximal yields (approximately 99.0%), but its effect on the reaction rate was substantial. For example, the initial reaction rate was reached to 0.29 mol L⁻¹ h⁻¹ at 0.1 g mL⁻¹ microbial cells whereas 0.06 mol L⁻¹ h⁻¹ at 0.02 g mL⁻¹ microbial cells. At the same time, a reaction period of only 4.5 h was needed for 0.1 g mL⁻¹ *E. coli* cells whereas 24 h was needed for 0.02 g mL⁻¹ *E. coli* cells before reaching equilibrium. However, the product *e.e.* remain unchanged and kept over 99.9% within examined scope.

2.1.4 The effects of the shaking rate on the biocatalytic reactions. In general, the shaking rate can influence the particle transfer rate of substrates, co-substrates and products in the bioreaction process, and then influences the initial rate and the yield. So it is meaningful to explore the impacts of shaking rate on the bioreaction. Fig. 1d showed the impact of the shaking rate on (*R*)-HBME asymmetric synthesis. It was found that the initial rate accelerates markedly with increasing shaking rate from 140 rpm to 200 rpm, and a modest decline was appeared when further rising up to 220 rpm, indicating that the optimum shaking rate was 200 rpm and the mass transfer indeed was the limiting step of initial rate for the bioreaction in aqueous system. However, the shaking rate exerted no significant effect on the maximal yields (about 99.0%). Moreover, the product *e.e.* remain unchanged and kept over 99.9% within examined scope. Obviously, the optimum shaking rate for the bio-catalytic reaction was 200 rpm.

2.1.5 The effects of glucose as co-substrate on the biocatalytic reduction of MAA. The reason why the oxidation-reduction reaction could proceed smoothly without adding expensive co-enzyme is that the co-enzyme is cycling with whole cells when a co-substrate is afforded in the regeneration system.²⁵ It was reported that D-glucose is a suitable hydrogen donors and commonly employed as a co-substrate for coenzyme regeneration in many biocatalytic reductions for its chemical properties and widespread source.²⁶ Therefore, a GDH system was constructed in the *E. coli* by our group, and the glucose impacts on the reaction was subsequently explored. As illustrated in Fig. 1e, MAA hardly could be reduced to (*R*)-HBME without adding any co-substrates into the reaction system. And the glucose markedly influenced the reaction when 50 mM glucose was presented in the reaction solution, the initial rate and the yield gave rise to 0.147 mol L⁻¹ h⁻¹ and 88.3%, respectively. At the same time, the changes in glucose concentrations were monitored as the reaction processed at 150 mM concentration of MAA (data not shown). It was found that the glucose was used up within 3 h when 50 mM glucose was added into reaction solution. Thus, we reasoned that the relatively low yields might be attributed to insufficient regeneration of the

cofactors for reactions when MAA concentrations were more than 150 mM in the presence of 50 mM glucose. To verify our assumption, a high concentration of glucose was supplemented up to 100 mM, the initial reaction rate was improved to 0.151 mol L⁻¹ h⁻¹ and the yield was reached to 98.3% after a reaction time of 6 h. Continue to increase the glucose from 100 to 800 mM, although the initial reaction rates were slightly increased, the yield was comparable, and we reasoned that a possibility was that an increase of glucose accelerates the coenzyme regeneration in the *E. coli* cells. However, a clear drop was appeared in the initial reaction rate and the yield when increase the glucose up to 1500 mM, indicating that an excess of glucose facilitated coenzyme regeneration in the *E. coli* cells and thus generated overmuch glucose acid, which inhibited the viability of engineered *E. coli* cells greatly. In general, the engineered *E. coli* cells exhibited excellent catalytic performances within the glucose concentration tested. Interestingly, the concentration of glucose showed no influence on the product *e.e.* and kept above 99.9%. Taking together, the optimal concentration of co-substrate for the reaction was thought to be 200 to 1000 mM.

2.1.6 The comparison of the time course of reaction between the *E. coli* and the *Acetobacter* sp. CCTCC M209061 cells. Fig. 1f showed the time course of the asymmetric reduction using the resting reconstructed *E. coli* whole-cells and the *Acetobacter* sp. CCTCC M209061 cells under its own optimized conditions. As illustrated in Fig. 1f, the bio-reduction of MAA to (*R*)-HBME with engineered cells gave an encouraging result, (*R*)-HBME was synthesized quickly, and a maximal yield (>96.0%) was obtained within 4.5 h. Compared with engineered *E. coli* cells, the bio-reduction of MAA to (*R*)-HBME with *Acetobacter* sp. CCTCC M209061 cells was a little undesired, with a 89.3% product yield was observed after a reaction for 24 h. No matter the engineered *E. coli* strain or the corresponding wild strain for reduction, the enantio-selectivity remained above 99.9% during the two reactions. Therefore, the engineered *E. coli* exhibited better promising and competitive for the biocatalytic reduction of MAA to (*R*)-HBME than that of the wild strain.

2.2 Substrate and exogenous-product inhibition and toxicity toward engineered *E. coli* cells

2.2.1 Substrate inhibition and toxicity toward engineered *E. coli* cells. It has been reported that β -ketone esters (*e.g.* ethyl acetoacetate) is an inhibitory and toxic compound toward microbial cells,²⁷ and it may result in changes of cell membrane permeability and inhibition of the activities of various dehydrogenases as well as synthesis of ribonucleic acid (RNA).^{28,29} Therefore, it is critical to explore the optimum substrate level of the biocatalytic reduction reactions.

The tolerance of *E. coli* cells toward MAA was evaluated (Fig. 2a). As shown in Fig. 2a, the reaction rate accelerated markedly when substrate concentration increased from 100 to 350 mM, and the highest initial reaction rate (0.617 mol L⁻¹ h⁻¹) was observed at 350 mM MAA in the presence of 800 mM glucose and a yield of 85.3% was obtained. Further increasing the



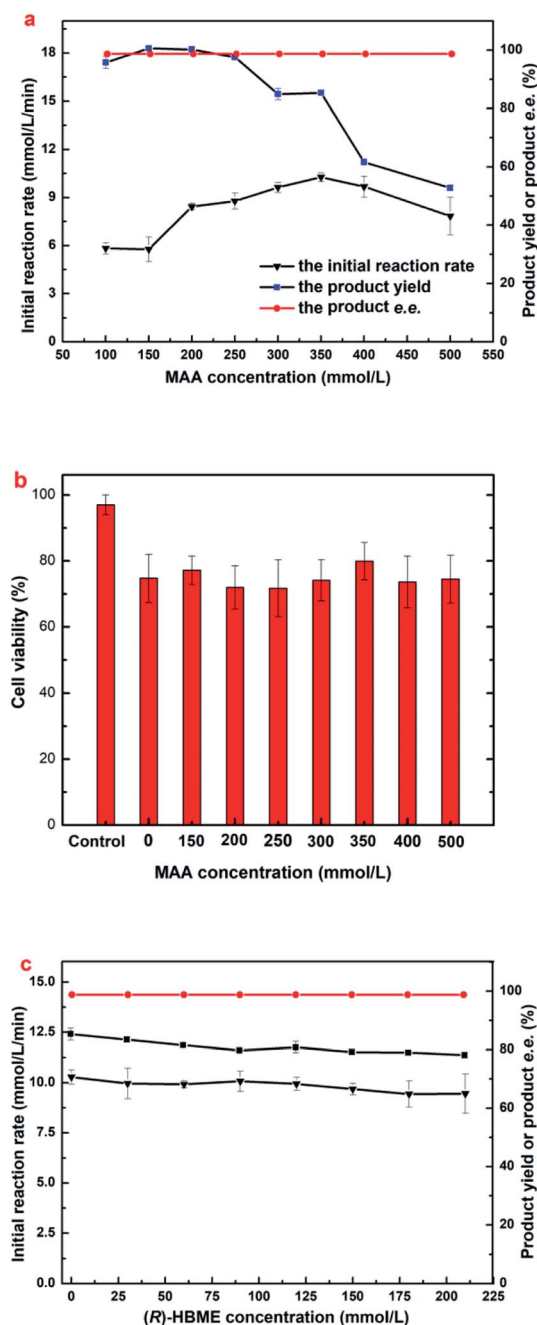


Fig. 2 Effects of substrate concentrations on (a) (R)-HBME synthesis (b) cell viability and (c) the exogenous-product concentrations on (R)-HBME synthesis. Reaction conditions for (a) 800 mM glucose, 60 mg mL⁻¹ microbial cells (wet weight), 4 mL phosphate buffer (200 mM, pH 7.0), 200 rpm, 40 °C; reaction periods: 4, 5, 6, 9, 10, 10, 10 and 10 h, with gradually increasing MAA concentrations from 100 to 500 mM, respectively. (b) After microbial cells of 60 mg mL⁻¹ were incubated for 12 h in phosphate buffer (200 mM, pH 7.0) containing MAA of the designated concentration at 200 rpm and 40 °C, cell viability was measured. Control: fresh cells harvested. (c) (R)-HBME of the designated concentration with a reaction time of 10 h.

substrate concentration leading to a clear drop in the initial rate and the yield. However, the maximum yield showed no significantly change when substrate increased from 100 to 300 mM and about 95.5 to 99.0% were obtained within 3–10 h. Continue to

increase the substrate concentration to 400 mM resulted in a clear decline to a yield of 61.7%. Microbial cells were capable of smoothly reducing MAA in the concentration up to 500 mM to a yield of 53.1% after 10 h. The effects suggested that the significant inhibition of substrate occurs at a relatively high MAA concentration (above 350 mM). To date, this is the highest MAA concentration of microbial cells ever reported.

It is worth noting that a yield only 85.3% was obtained when the MAA concentration was 350 mM, which could not be explained rationally by the initial reaction rate, because that results showed no substrate and product inhibition occurs at 350 mM MAA. Continue to increase the dosage of *E. coli* cells at 350 mM of MAA, there was no boost in the yield (data not shown). It has been demonstrated that some β -ketone esters might be toxic to microbial cells.²⁷ Therefore, cell viability was assayed after the engineered *E. coli* cells incubated in the presence of various MAA concentrations (Fig. 2b). It was found that more than 79.95% of the cells remained alive after in an incubation period of 12 h when the substrate concentration was from 150 mM to 500 mM, which was comparable to the control group that in the absence of MAA, but the fresh cell survival rate was 97.05% yet. That results suggested that MAA almost exerted no toxic effect on the cells within the range of concentration investigated, and higher substrate concentration just slows down the activity of the enzyme, but there was no death of the most cells. Small part of the cells death could be caused by mechanical damage under 200 rpm speed, and led to a cell lysis occurred in the reaction solution.

The above results on MAA inhibition and toxicity suggested that engineered *E. coli* cells could be tolerant to substrate concentrations up to 350 mM, but the substrate didn't convert into the product completely. It is well known that the glucose oxidase oxidizes glucose into glucose acid, which is exhibited weak acidity. Accordingly, the changes of the pH in reaction solution were monitored as the reaction processed at 350 mM concentration of MAA, and it was found that the value of pH in the solution reduced to about 3.7 after an incubation for 10 h. Therefore, we reasoned that the yield was 85.3% rather than approaches 100% might be owed to the D-glucose oxidized to D-glucuronic acid and leading to an acidic environment in the solution. All the data was recorded in the presence of 800 mM glucose, and the product e.e. kept constantly above 99.9% within the tested range of MAA concentration. Obviously, under the present reaction conditions, the optimum concentration of the substrate was up to 350 mM.

2.2.2 Exogenous-product inhibition and toxicity toward microbial cells. Except for substrate inhibition and toxicity, such negative effects of product may also exert in the aqueous buffer system.³⁰ As illustrated in Fig. 2c, no significant product inhibition was observed within the range of investigated concentration, because both the initial rate and the maximum yield kept consistent at the different exogenous-product concentrations, and the product e.e. remained above 99.9% throughout the range of exogenous-product concentrations investigated. As it turns out, the product had hardly any



inhibitory and toxic to engineered *E. coli* cells, which was a good news for establishing an efficient bioreduction system.

2.3 Improved synthesis of (*R*)-HBME

Maximizing the substrate concentration furtherly is critical for efficient synthesis of (*R*)-HBME from MAA. Additionally, a high concentration of the product accumulation in the reaction solution is highly desired. As we all know, the glucose dehydrogenase oxidizes D-glucose to convert it into D-glucuronic acid in the reaction system, as a result, a dramatically drop in pH on the level may be aroused in the reaction solution. Besides, as illustrated in Fig. 1a, the dropped pH in the reaction solution reduced the reaction rates and inhibited the activities of double-enzyme seriously. Inspired by this consequences, the pH values was monitored in the process of reaction and a fed-batch feeding of the alkaline compound to reaction solution was conducted in the biocatalytic synthesis of (*R*)-HBME.

2.3.1 The on-line monitoring of pH and D-glucuronic acid in the course of the reaction. Fig. 3 showed the changes of pH and the production of D-glucuronic acid in bioreduction reaction solutions under optimized conditions. It was found that the pH was reduced to about 4.0 after a reaction time of 10 h, with a large amount of D-glucuronic acid produced simultaneously. As illustrated in Fig. 1a, buffer pH exerted a notable impact on both the initial reaction rate and the maximum yield. Therefore, we reasoned that the reaction termination might be owed to lower pH in the solution when afforded sufficient co-substrate for the reduction of MAA.

2.3.2 The effects of variable alkaline compound regulating method on the synthesis of (*R*)-HBME. To verify our above assumption, the reduction of MAA was conducted by a fed-batch feeding of the alkaline compound to reaction solutions. Fig. 4a showed the effects of tuning pH by Na_2CO_3 and $\text{C}_6\text{H}_{11}\text{NaO}_7$ (sodium gluconate) on (*R*)-HBME synthesis. It was found that tuning pH by Na_2CO_3 exerted a significant effect on the catalytic performance of *E. coli* cells, particularly on the substrate concentration and the productivity. A yield of 88% was achieved after a reaction time of 6 h (Fig. 4a), but the yield

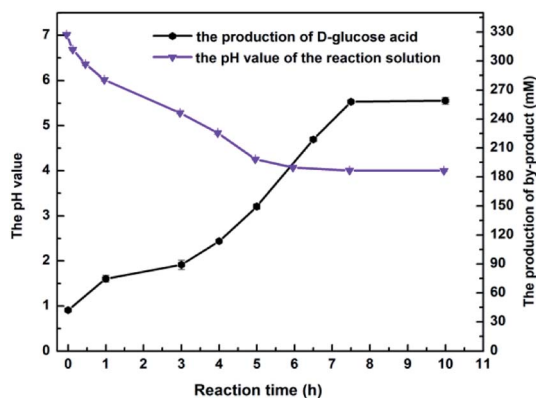


Fig. 3 The online monitoring of pH and D-glucuronic acid in the course of the reaction. Reaction conditions: 350 mM MAA, 800 mM glucose, 60 mg mL⁻¹ microbial cells (wet weight), 4 mL phosphate buffer (200 mM, pH 7.0), 200 rpm, 40 °C.

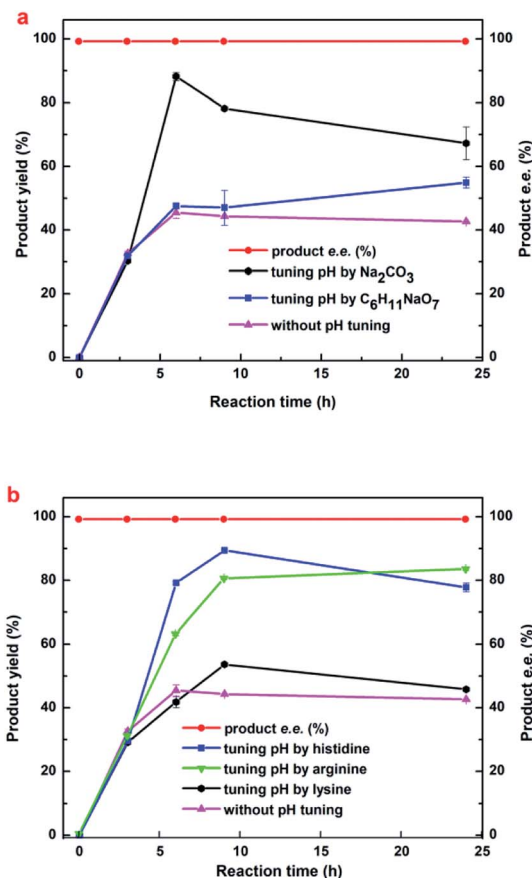


Fig. 4 The effects of variable alkaline compound regulating method on the synthesis of (*R*)-HBME. Reaction conditions: 450 mM MAA, 60 mg mL⁻¹ microbial cells (wet weight), 1000 mM glucose, 4 mL phosphate buffer (200 mM, pH 7.0), 200 rpm, 35 °C. Tuning pH of the reaction mixture by different alkaline compounds.

decreased slightly with the prolongation of the reaction time, suggesting that the product was a little degraded overtime, and it may be caused by a slightly alkalinity appeared in the reaction solutions within a short time of alkaline Na_2CO_3 powers added, because smaller amounts of HBME could be degraded under alkaline conditions. However, it is worth noting that the product yield was much lower when tuning pH by $\text{C}_6\text{H}_{11}\text{NaO}_7$ than by Na_2CO_3 but higher than the control, which was suggested that D-glucuronic acid's ionization was inhibited to a certain degree due to addition of sodium gluconate. Besides, the product *e.e.* remained above 99.9%. Except for using Na_2CO_3 and $\text{C}_6\text{H}_{11}\text{NaO}_7$, we attempted to adopt basic amino acid (Arg, Lys and His) for tuning biocatalytic reduction pH. As illustrated in Fig. 4b, it was found that both basic amino acid (Arg, Lys and His) had a positive effects on the reduction reaction, and a good yield and a excellent selectivity (99.9%) were achieved, besides, the yield was higher by His regulation than the other two amino acids. In the case of tuning pH by His, a relatively higher yield (89.4%) was achieved when added 450 mM MAA after a reaction time of 9 h, but the product displayed a little degradation with a prolongation of the reaction time. However, the yield was much lower by Arg and Lys than



His. Therefore, the results indicated that His was the preferred alkaline compound for tuning this reduction reaction, possibly because, His was much milder than Arg and Lys.

2.3.3 The effects of histidine regulating method on the synthesis of (*R*)-HBME. Continuous increasing of a high concentration of the substrate in the reaction system is highly desirable, because it can not only significantly improve the reaction system productivity but also facilitate the utility of this system. As a result, the reduction of MAA was conducted at a relatively higher substrate concentration (Fig. 5a). The MAA concentration was improved significantly with a high yield and selectivity. For example, the yield of 89.34% was obtained in the case of 900 mM MAA within 10 h after 6-batch feeding of His and glucose. However, the catalytic performance of microbial cells decreased significantly (the yield was about 59%) with increasing substrate concentrations to 1000 mM. We reasoned that the relatively low yields might be owed to the limited capabilities of His for tuning the pH of the solution when overmuch D-glucuronic acid was produced.

2.3.4 The effects of His- Na_2CO_3 composite regulating method on the synthesis of (*R*)-HBME. Inspired by the above results, we attempted to use His- Na_2CO_3 composite regulating strategy for tuning the pH of the solution (Fig. 5b). Fortunately, the MAA concentration was improved significantly and

the reaction time was reduced significantly (e.g., 8 h at 1000 mM vs. 10 h at 1000 mM). In addition, the yield of 74.7% was obtained in the case of 1000 mM MAA within 8 h after 3-batch feeding of His and glucose, which was higher than tuning pH by His (e.g., 59% vs. 75% at 1000 mM). The yield improved to 88% with a prolongation of reaction time to 24 h, this is potential for challenging higher substrate concentration for industrialization furtherly. In addition, the product *e.e.* remained above 99.9% throughout the range of substrate concentrations investigated.

2.4 Preparative scale biocatalytic reduction of MAA to (*R*)-HBME

To show the applicability of the biocatalytic enantioselective reduction of MAA to (*R*)-HBME catalyzed by *E. coli* cells, we also carried out the bioreduction on a 150 mL preparative scale. The reaction process was monitored by GC analysis and the product was extracted from the reaction mixture with ethyl acetate upon the exhaustion of the substrate. Although slightly lower than that obtained on the 4 mL scale, the isolated yield (85%) was much higher than that reported previously and the product *e.e.* was very high (>99.9%). Hence the biocatalytic reduction of MAA to (*R*)-HBME with engineered *E. coli* cells is promising and competitive.

3. Experimental section

3.1 Biological and chemical materials

The engineered *E. coli* strain was previously reconstructed by our group and preserved in our laboratory.^{15,16}

Methyl acetoacetate (99.9% purity, MAA) was from Sigma-Aldrich (USA). Methyl (*S*)-3-hydroxybutyrate (98% purity, (*S*)-HBME), methyl (*R*)-3-hydroxybutyrate (98% purity, (*R*)-HBME), *n*-decane (>99.9% purity), His, Arg, Lys, Na_2CO_3 and $\text{C}_6\text{H}_{11}\text{NaO}_7$ (>99.9% purity) were also obtained from Sigma-Aldrich (USA). All other reagents and solvents were purchased from commercial sources and were of analytical pure grade.

3.2 Cultivation of the engineered *E. coli* cells

The cultivation of the engineered *E. coli* cells were described in our previous article and within that a difference was the volume and the pH of the cultivation medium was 50 mL and 7.0, respectively.^{15,16} The cells were at the late exponential growth phase and were harvested by centrifugation (9000g, 5 min, 4 °C), washed twice with 0.85% NaCl solution, and collected by centrifugation (8000g, 5 min, 4 °C). After centrifugation the supernatant was discarded clearly, then the biomass of the wet cells was given by a precision balance of another millimeter.

3.3 General procedure for asymmetric reduction of MAA

Typically, 4 mL phosphate buffer (200 mM, pH 7.0) containing 150 mM MAA, 400 mM glucose and 60 mg mL⁻¹ (wet weight) microbial cells was added to a 10 mL stoppered flask capped with a septum. The reaction mixture firstly was incubated at 30 °C and 180 rpm. During this period, equal amount of

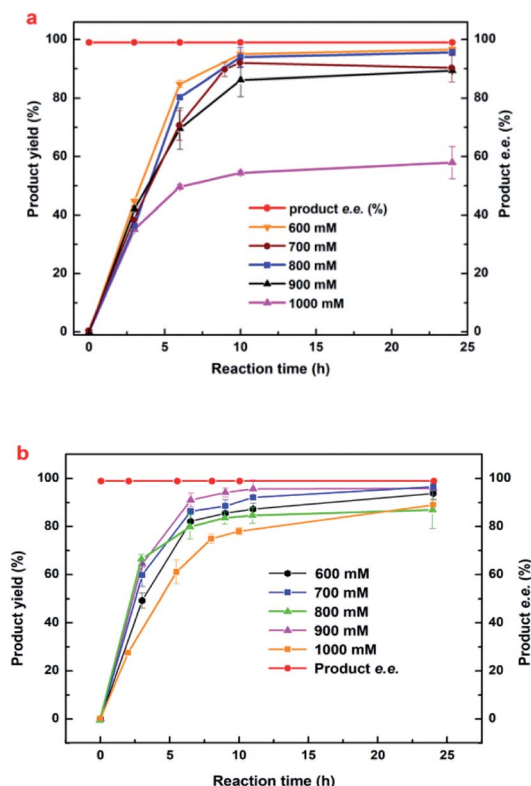


Fig. 5 The effects of (a) histidine and (b) His- Na_2CO_3 composite regulating method on the synthesis of (*R*)-HBME. Reaction conditions: 1000 mM glucose, 60 mg mL⁻¹ microbial cells (wet weight), 4 mL phosphate buffer (200 mM, pH 7.0), 200 rpm, 40 °C, MAA of the designated concentration. Tuning pH of the reaction mixture to approximately 6.5 and 7.0 every 3 h by His and His- Na_2CO_3 , respectively.



samples (50 μL) were withdrawn from the reaction mixtures at specified time intervals, the samples were extracted with 200 μL ethyl acetate containing 15.1 mmol L^{-1} *n*-decane for GC analysis. The details of the buffer pH, reaction temperature, co-substrate concentration, substrate concentration and exogenous product concentration were specified for each case.

The initial reaction rate was calculated as the increase of (*R*)-HBME concentrations in the first 10 minutes reaction stage. The yield was conducted as the ratio of the measured product amount to the theoretical product amount at the end of the reaction.

3.4 The procedure for improved synthesis of (*R*)-HBME

Biocatalytic synthesis of (*R*)-HBME was conducted by fed-batch feeding of *D*-glucose and corresponding alkaline compounds. After glucose was almost used up, 200 mM glucose were supplemented. Tuning pH by a series of alkaline compound, including Na_2CO_3 , $\text{C}_6\text{H}_{11}\text{NaO}_7$, His, Arg and Lys (added in fed-batch mode). The reactions were carried out at 60 mg mL^{-1} (wet weight) microbial cells, 200 rpm and 35 $^\circ\text{C}$ for 24 h. The substrate concentration was specified for each case.

3.5 Preparative scale biotransformation

The preparative scale biocatalytic reduction of MAA to (*R*)-HBME was carried out by adding 60 mg mL^{-1} of *E. coli* cells and 1000 mM of MAA to 150 mL of the co-solvent system of phosphate buffer (200 mM, pH 7.0) containing 1000 mM glucose at 35 $^\circ\text{C}$ and 180 rpm. Tuning pH of the reaction mixture to approximately 7.0 every 1.5 h by His- Na_2CO_3 . The reaction was terminated when no substrate was detectable by GC analysis. The products were extracted from the reaction mixture with ethyl acetate. The product *e.e.* and the isolated yield were also determined by GC analysis.

3.6 GC analysis of MAA

The reaction mixtures were analyzed using a column named CP-Chiralsil-Dex-CB (USA) by a Shimadzu GC2010, which equipped with a flame ionization detector.

Split ratio of sample injection was 50 : 1, and the temperature of the injector, the detector and the column were kept at 170 $^\circ\text{C}$, 170 $^\circ\text{C}$ and 90 $^\circ\text{C}$, respectively. The whole process lasts 5.2 minutes. The employed insert gas was nitrogen, to carry the volatile MAA and (*R*)-HBME through the column. The insert gas flow rate in the column was 1.45 mL min^{-1} . The retention-times for *n*-decane, MAA and (*R*)-HBME were 2.6, 3.5 and 4.5 min, respectively.

The detection of product *e.e.* was assayed using a same column and with derivatization of (*R*)-HBME by TBDMCS (*tert*-butyldimethylsilyl chloride).²⁰ Except for the column temperature 70 $^\circ\text{C}$ for 15 min and the flow rate in the column 0.5 mL min^{-1} and other parameters were under the GC detection conditions described above, the retention-times for (*R*)-HBME and (*S*)-HBME were 9.8 and 11.2 min, respectively.

All experiments were performed at least in duplicate and the average error for this determination was less than 1.0%, and the values were expressed as the standard deviations.

3.7 Flow cytometry assay of cell viability

The viability of engineered *E. coli* cells was assayed after incubated for 12 h in phosphate buffer system (200 mM, pH 7.0), containing 800 mM glucose under the designated conditions. The beads of engineered *E. coli* cells were withdrawn from the reaction solution and then added to phosphate buffer (200 mM, pH 7.0) to dissolve and wash the beads and diluted to 10^5 colony-forming units per mL and dyed with 50 $\mu\text{g mL}^{-1}$ PI for 15 min in the dark.²¹ A Gallios flow cytometer (Beckman Coulter Inc., USA) was used for determining the cell viability, and the fluorescence emission was observed at 488 nm and was recorded at 630 nm. A software of Kaluza were adopted for data processing. The cell viability was expressed as the ratio of the cells unstained with PI to the total cells.

3.8 HPLC analysis of $\text{CH}_2\text{OH}(\text{CHOH})_4\text{COOH}$

Firstly, an adequate amount of NaOH were added to the reaction mixtures until the pH of the solution was 10.0, and then the analysis of the glucose acid was converted to analyze the sodium gluconate. The next, the sodium gluconate analyzed using an Eclipse XDB-C18 column (4.6 mm \times 250 mm, 5 μm , Agilent, USA) by reversed-phase HPLC equipped with a Waters 996 photodiode array detector (Waters, USA). The mobile phase was the mixture of methanol, ultrapure water and 1.0% H_3PO_3 solution (5 : 45 : 50, v/v/v) with a flow rate of 0.6 mL min^{-1} . The retention times of sodium gluconate were 6.3 min.

4. Conclusions

A selective and high-efficient biocatalytic approach for the anti-Prelog asymmetric reduction of β -ketone esters using engineered *E. coli* resting cells has been developed. That engineered *E. coli* cells had good catalytic performances over a wide range of conditions. Furthermore, the results described here clearly showed that the whole-cell biocatalytic process is feasible up to a 150 mL scale. If further scale-up is possible, the biocatalytic reduction of β -ketone esters by the engineered *E. coli* whole-cells was promising for the development of an industrially sound biocatalytic process for production.

Conflicts of interest

There are no conflicts to declare.

Acknowledgements

We gratefully acknowledge the National Natural Science Foundation of China (21336002; 21376096; 21676104), and the Program of State Key Laboratory of Pulp and Paper Engineering (2017ZD05) for partially funding this work.

Notes and references

- 1 Z. W. Luo and S. Y. Lee, *Nat. Commun.*, 2017, **8**, 1–8.
- 2 K. Nakamura, K. Kitano, T. Matsuda and A. Ohno, *Tetrahedron Lett.*, 1996, **27**, 1629–1632.



- 3 S. M. Thomas, R. Dicosimo and V. Nagarajan, *Trends Biotechnol.*, 2002, **20**, 238–242.
- 4 T. Ema, H. Yagasaki, N. Okita, M. Takeda and T. Sakai, *Tetrahedron*, 2006, **62**, 6143–6149.
- 5 M. Wada, H. Kawabata, M. Kataoka, Y. Yasohara, N. Kizaki, J. Hasegawa and S. Shimizu, *J. Biosci. Bioeng.*, 1999, **87**, 144–148.
- 6 D. Gamemara and d. M. P. Dominguez, *Biotechnol. Adv.*, 2009, **27**, 278–285.
- 7 J. Zhang, Q. Cao, S. Li, X. Lu, Y. Zhao, J. S. Guan, J. C. Chen, Q. Wu and G. Q. Chen, *Biomaterials*, 2013, **34**, 7552–7562.
- 8 D. L. Hoyert and J. Xu, *Deaths: Preliminary Data for 2011*, National Center for Health Statistics, 2012, vol. 61, pp. 1–51.
- 9 X. H. Zou, H. M. Li, S. Wang, M. Leski, Y. C. Yao, X. D. Yang, Q. J. Huang and G. Q. Chen, *Biomaterials*, 2009, **30**, 1532.
- 10 X. Q. Xiao, Y. Zhao and G. Q. Chen, *Biomaterials*, 2007, **28**, 3608–3616.
- 11 G. Tian, Q. Wu, S. Sun, I. Noda and G. Q. Chen, *Appl. Spectrosc.*, 2001, **55**, 888–893.
- 12 Q. Wu, Y. Wang and G. Q. Chen, *Artif. Cells, Blood Substitutes, Immobilization Biotechnol.*, 2009, **37**, 1–12.
- 13 V. D. Silva, B. U. Stambuk and M. D. G. Nascimento, *J. Mol. Catal. B: Enzym.*, 2012, **77**, 98–104.
- 14 Y. Yasohara, N. Kizaki, J. Hasegawa, S. Takahashi, M. Wada, M. Kataoka and S. Shimizu, *Appl. Microbiol. Biotechnol.*, 1999, **51**, 847–851.
- 15 P. Wei, Y. H. Cui, M. H. Zong, P. Xu, J. Zhou and W. Y. Lou, *Bioresour. Bioprocess*, 2017, **4**, 39.
- 16 P. Wei, J. X. Gao, G. W. Zheng, H. Wu, M. H. Zong and W. Y. Lou, *J. Biotechnol.*, 2016, **230**, 54–62.
- 17 H. N. And and S. Yao, *Ind. Eng. Chem. Res.*, 2007, **46**, 7921–7926.
- 18 P. X. Du, P. Wei, W. Y. Lou and M. H. Zong, *Microb. Cell Fact.*, 2014, **13**, 84.
- 19 X. H. Chen, P. Wei, X. T. Wang, M. H. Zong and W. Y. Lou, *PLoS One*, 2014, **9**, e94543.
- 20 J. H. Shi, X. W. Cheng, L. Zhou and W. Yan, *Chin. J. Anal. Chem.*, 2007, **35**, 714–718.
- 21 X. Y. Zhang, M. H. Zong and N. Li, *Green Chem.*, 2017, **10**, 372–378.
- 22 J. L. Guo, X. Q. Mu and Y. Xu, *Bioprocess Biosyst. Eng.*, 2010, **33**, 797–804.
- 23 N. A. Salvi and S. Chattopadhyay, *ChemInform*, 2005, **36**, 3397–3400.
- 24 F. Luo, D. Lu and Y. Gong, *J. Mol. Catal. B: Enzym.*, 2011, **70**, 101–107.
- 25 M. Goretti, C. Ponzoni, E. Caselli, E. Marchegiani, M. R. Cramarossa, B. Turchetti, L. Forti and P. Buzzini, *Bioresour. Technol.*, 2011, **102**, 3993–3998.
- 26 W. Lou, W. Wang, T. J. Smith and M. Zong, *Green Chem.*, 2009, **11**, 1377–1384.
- 27 X. T. Wang, X. H. Chen, Y. Xu, W. Y. Lou, H. Wu and M. H. Zong, *J. Biotechnol.*, 2013, **163**, 292–300.
- 28 C. H. Ra, G. T. Jeong, M. K. Shin and S. K. Kim, *Bioresour. Technol.*, 2013, **140**, 421–425.
- 29 Y. Zhang, B. Han and T. C. Ezeji, *N. Biotechnol.*, 2012, **29**, 345–351.
- 30 Y. Ni and J. H. Xu, *Biotechnol. Adv.*, 2012, **30**, 1279–1288.
- 31 M. Ernst, B. Kaup and S. Bringer-Meyer, *Appl. Microbiol. Biotechnol.*, 2005, **66**, 629–634.

