

Cite this: *Mater. Adv.*, 2022,
3, 3055

Interface modification of NASICON-type Li-ion conducting ceramic electrolytes: a critical evaluation

Nurbol Tolganbek,^a Assel Serikkazyeva,^a Sandugash Kalybekkyzy,^b Madina Sarsembina,^a Kiyoshi Kanamura,^c Zhumabay Bakenov ^{*ab} and Almagul Mentbayeva ^{*a}

This review article focuses on the methods to solve the critical issue of reduction in NASICON-type solid electrolytes such as $\text{Li}_{1+x}\text{Al}_x\text{Ti}_{2-x}(\text{PO}_4)_3$ and $\text{Li}_{1+x}\text{Al}_x\text{Ge}_{2-x}(\text{PO}_4)_3$ by Li metal. The formation of a reduced phase on the surface of solid electrolytes degrades ionic conductivity. Numerous research efforts were devoted to resolve this issue by depositing various types of artificial protecting layers on the materials' surface. Inorganics such as lithium salts, oxides, and composites, solid polymer electrolytes, as well as hybrid composite membranes have been applied to protect the material from the side reaction by lithium metal. Besides prevention, these layers improved the interface between solid electrolyte and electrode. Particularly, a coating with a polymer layer prevented the lithium dendrite growth by evenly distributing lithium. The assessments of these layers and their effect on the performance of solid electrolytes are discussed to establish a pathway for further improvement of solid-state electrolytes and encourage their implementation in all-solid-state Li metal batteries. Through this critical evaluation, the present review provides a summary of the most recent works in this area, allowing more efficient and target-oriented research on improving solid-state ion conductors and their interfaces.

Received 24th December 2021,
Accepted 20th February 2022

DOI: 10.1039/d1ma01239h

rsc.li/materials-advances

Introduction

The ever growing ecological concerns arising from exhaust emissions from fossil fuel based vehicles have imposed more strict regulations and requirements on the car industry enforcing the production of electricity powered and hybrid electric vehicles (EV, HV).^{1,2} EVs are mostly powered by lithium-ion batteries (LIB), the history of which started with the development and commercialization of this technology by Sony in 1990.³ The advantages of LIBs such as high energy density, long cycle life and no memory effect made them superior compared to other battery technologies.^{4–8} This enabled LIB application in smaller electronics, electric/hybrid vehicles and stationary energy storage systems. However, the further expansion of LIB's market is hindered by a significant number of safety concerns, which is mainly resulting from the use of organic solvent-based liquid electrolytes.^{9–11} In addition, liquid electrolytes may cause leakage problems. Taking

into consideration these weaknesses of current commercial lithium ion batteries, the approaches for new battery technologies are under development. These so-called next generation Li-ion batteries rely on the design and advancement of solid electrolytes^{12–14} and cathode materials.¹⁵ Therefore, various solid electrolytes based on ion conducting polymers and ceramics have been developed. These solid electrolytes showed many advantages, for instance, a high lithium transference number (t_+) value close to one superior to liquid organic electrolytes characterized with a t_+ value in the range of 0.2–0.5.^{16–18} Among the other benefits are increased lifetime and improved safety of the battery towards high operating potential.^{19–23} Moreover, solid electrolytes have enhanced thermal stability and diminished flammability.²⁴ By all means, rapid preparation and implementation of solid electrolytes to replace liquid electrolytes will be a breakthrough in the progress of Li-ion batteries. Currently, most of the developed and advanced solid polymer electrolytes are based on poly(ethylene oxide) (PEO),²⁵ poly(acrylic acid) (PAA),²⁶ poly(vinylidene fluoride) (PVdF),²⁷ poly(methyl methacrylate) (PMMA),²⁷ etc.²⁸ Promising representatives of ceramic-based solid electrolytes are LISICON-type,^{29,30} argyrodite,^{31,32} garnet,^{33–35} Li-nitride,^{36,37} perovskite,^{38–40} antiperovskite^{41,42} and NASICON-type.^{43–46} Despite a large number of solid electrolytes being investigated, extensive experimental studies still have been

^a Department of Chemical and Material Engineering, School of Engineering and Digital Sciences, Nazarbayev University, Nur-Sultan, Kazakhstan.
E-mail: almagul.mentbayeva@nu.edu.kz

^b National Laboratory Astana, Nazarbayev University, Nur-Sultan, Kazakhstan

^c Graduate School of Urban Environmental Sciences, Tokyo Metropolitan University, Tokyo, Japan



conducted to develop electrolytes with increased ionic conductivity due to structural and compositional tuning.⁴⁷ Certainly, with all provided preferences, they are promising to advance the next generation batteries, and one of the most up-and-coming solid electrolytes is NASICON-type ceramic materials. They have the general formula of $\text{LiM}_2(\text{PO}_4)_3$,⁴⁸ where M can be a transition metal such as zirconium (Zr),^{49,50} hafnium (Hf),⁵¹ germanium (Ge),^{52,53} and titanium (Ti).⁵⁴

The framework of NASICON structured crystals has a rhombohedral unit cell with the space group of $R\bar{3}c$. The crystal of $\text{LiM}_2(\text{PO}_4)_3$ consists of MO_6 octahedra joined in the corner with PO_4 tetrahedra in an alternating sequence.^{55–57} The ionic conductivity of $\text{LiTi}_2(\text{PO}_4)_3$ and $\text{LiGe}_2(\text{PO}_4)_3$ materials is insufficient, and hence other transition metals are introduced into the structure in order to improve it. This was achieved by a partial substitution of titanium and germanium with d-elements that influenced the lithium ion migration and bottleneck parameters within the crystal structure.⁴⁷ Because of the size of the dopants, the formula was revised to $\text{Li}_{1+x}\text{M}^{2+}_{2-x}\text{M}'^{3+}_x(\text{PO}_4)_3$, where M is Zr, Hf, Sn, Ge and Ti and M' is Cr, Ga, Sc, Y, In, La and Al.^{52,58,59} One of the most successful dopants that had an encouraging influence on ionic conductivity was aluminum.⁶⁰ The solid electrolytes with the composition of $\text{Li}_{1+x}\text{Al}_x\text{Ti}_{2-x}(\text{PO}_4)_3$ (LATP) and $\text{Li}_{1+x}\text{Al}_x\text{Ge}_{2-x}(\text{PO}_4)_3$ (LAGP) have the highest room temperature ionic conductivity of $\sim 10^{-3} \text{ S cm}^{-1}$.^{61–64} The ionic conductivity depends on the dopant level as well, and it should not exceed 15% to prevent the formation of a secondary phase.^{52,55,58–60} The addition of the aliovalent Al^{3+} dopant allowed the structure to accommodate more lithium. The increase of lithium content in the structure positively affected the overall ionic conductivity of the material. A summary of the designed LAMP materials with various dopants and their ionic conductivity is shown in Table 1.

Although NASICON has encouraging dominance over other types of electrolytes regarding chemical and electrochemical stability and ionic conductivity, LATP and LAGP ceramics easily reduce (Me^{4+} to Me^{3+}) while contacting with lithium metal forming a lithium hindering phase.^{44,71,72} Interestingly many other researchers working on solid electrolytes have also reported the electrochemical or chemical instability of inorganic solid electrolytes due to Li metal. Particularly, titanium, germanium, tantalum, and sulfide containing all-solid-state electrolytes demonstrated dramatic outcomes.^{73–75} For instance, LATP and LAGP electrolytes have high reactivity with Li metal, instantly forming a lithium ion blocking but high electron conductive layer

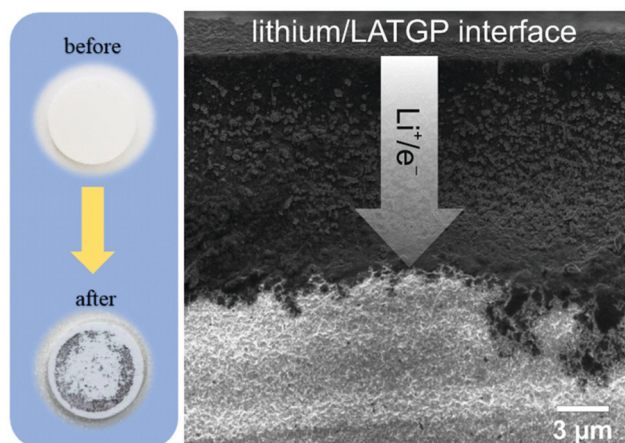
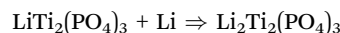
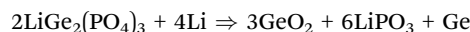


Fig. 1 LAMP pellets before and after the contact with the Li metal chip and SEM cross-section image of LATGP after contact with Li metal.⁷⁵

between electrolyte and electrode (Fig. 1), which is described as a mixed (ionic/electronic) conducting interphase (MCI).⁷⁵ The general reduction reactions can be represented as follows:^{76–78}



In the case of mixed (both electronic and ionic) conduction, the interfacial phenomena are not straightforward, rather they are complex and complicated.⁷⁴ While Hartman *et al.* stated that the formation of MCI was not continuous,⁷⁵ Zhu *et al.* observed volumetric expansion between electrode and electrolyte that led to high resistance.⁷⁹ The reactivity of LATP and LAGP was calculated based on free enthalpy of reaction with lithium metal at different temperatures. The result showed that Ge^{4+} was completely reduced to Ge^0 while Ti^{4+} was reduced to Ti^{3+} . The chemical transformation was identified at the electrolyte and electrode interface during the lithiation of LATP, and experimental and calculation studies proved that the MCI had enhanced electronic conductivity but the chemical diffusion coefficient of lithium was reduced.^{75,79} The formation of an additional phase that hinders lithium hopping within the structure can be resolved by designing a protection layer between the electrolyte and lithium metal. A protective artificial layer between ceramic electrolyte and Li metal can suppress chemical reaction and dendrite formation, improve interfacial conductivity and uniformity, and enhance cyclability of a cell. Introduction of these artificial buffer layers has been carried out using various types of lithium ion conducting materials. It should be taken into consideration that implementation of these artificial layers is also of current interest for other advanced types of solid electrolytes such as garnet and sulfide.^{80,81} The essence of addition of these layers is mainly to prevent dendrite growth and to improve the interface between the solid phases of electrolyte and electrode. Recently, a number of review papers have been published focusing on the challenges of advanced electrolytes and issues concerning the interfaces for all-solid-state batteries.^{82–85}

Table 1 Available LATP and LAGP materials with ionic conductivity values

Model	Composition	Ionic conductivity, S cm^{-1} , at RT	Ref.
$\text{LiTi}_2(\text{PO}_4)_3$	$\text{LiTi}_2(\text{PO}_4)_3-0.2\text{Li}_2\text{BO}_3$	3×10^{-4}	65
	$\text{Li}_{1.3}\text{Al}_{0.3}\text{Ti}_{1.7}(\text{PO}_4)_3$	7×10^{-4}	48
	$\text{Li}_{1.3}\text{Sc}_{0.3}\text{Ti}_{1.7}(\text{PO}_4)_3$	7×10^{-4}	66
	$100[\text{Li}_{1.5}\text{Cr}_{0.5}\text{Ti}_{1.5}(\text{PO}_4)_3]-5\text{SiO}_2$	2.14×10^{-2}	43
$\text{LiGe}_2(\text{PO}_4)_3$	$2[\text{Li}_{1.4}\text{Ti}_{2}\text{Si}_{0.4}\text{P}_{2.6}\text{O}_{12}]-\text{AlPO}_4$	1.3×10^{-3}	67
	$\text{Li}_{1.5}\text{Al}_{0.5}\text{Ge}_{1.5}(\text{PO}_4)_3$	4×10^{-4}	68
	$\text{Li}_{1.5}\text{Al}_{0.5}\text{Ge}_{1.5}(\text{PO}_4)_3-0.05\text{Li}_2\text{O}$	7.25×10^{-4}	69
	$\text{Li}_{1.5}\text{Al}_{0.4}\text{Cr}_{0.1}\text{Ge}_{1.5}(\text{PO}_4)_3$	6.65×10^{-3}	70



Despite the existence of numerous reviews on the analysis of solid electrolytes, a particular review work on determining the problems of NASICON-type electrolyte reduction phenomena has not been reported, while resolving this dramatic issue of LATP and LAGP has gained a considerable amount of attention in recent years. Therefore, a comprehensive analytical summary of works on prevention of undesired reduction of LATP and LAGP and their improvements is necessary. This report has systematically compiled the findings on overcoming the above-mentioned issue by either depositing various types of novel materials on the solid electrolytes *via* different coating techniques or designing composite electrolytes by combining lithium ion conducting materials. Besides, the perspectives of NASICON-type electrolytes are discussed with a broad and extensive point of view.

Inorganic protective layers

Improvements without compromising the safety and ionic conductivity of solid electrolytes are the main tasks in material design in order to obtain compelling stable performance and increased lifespan of a cell. Yet, physical contact between electrode and solid electrolyte requires further advancement for constant lithium ion transport from electrode to electrolyte and *vice versa* through intermediate phase. The progress in this field also aids in preventing the side reaction of LATP and LAGP with Li metal. In recent years, prohibition of the side reactions between Li-ion conducting NASICON-type solid electrolytes and Li metal has been carried out by applying a wide range of lithium ion conducting materials as an interlayer. These interlayers are designed using either inorganics, polymers or their combinations. The choice of inorganics such as lithium salts, oxides, and other types of solid electrolytes as the buffer layer is justified by their robustness and high chemical and mechanical stability towards the active lithium metal. Most importantly, these interlayers act as a physical barrier and should be able to form conducting phases of Li_2S , Li_2O , LiF , Li_3N , and LiAl_5O_8 during the initial cycles with

lithium that can prevent the mixed conductive interphase (reductive decomposition) formation. These interlayer compounds can shield solid electrolytes from reductive degradation in case they are sufficiently electron insulating and reduce mechanical stress amplification at rough and faulty surface enabling lithium plating to be more stable.^{74,86,87} Actually, the widely used inorganic salt as the interlayer was lithium phosphate (Li_3PO_4). Initially, the salt was utilized as an artificial SEI layer in Li/LiFePO₄ cells to suppress lithium dendrite formation and improve cyclability of the battery with Li metal anode (Fig. 2a).⁸⁸ Young's modulus of the artificial SEI was generally assumed to be higher than 6 GPa which was satisfactory to prevent lithium dendrite growth. The authors stated that lithium ion conductivity of the salt was sufficient and it positively influenced the kinetics of a full cell.⁸⁸ Taking all these advantages into consideration, the salt showed great potential as a thin film interlayer between LATP and Li metal to improve the interface stability along with the prevention of dendrite growth.

There are a few works on lithium salts deposited as a buffer layer for NASICON-structured electrolytes as well. Basically, the distinctness of these reports was the implementation of protective substances by two diverse methods resulting in different thicknesses. Fig. 2 illustrates the cell assembly and cross sectional images of the interlayers. J. Liu *et al.* designed an interlayer through a one-step reaction process where polished Li metal was placed in a phosphoric acid solution to form a 200 nm artificial SEI layer.⁹² On the other hand, other authors (Y. Liu *et al.*) deposited the salt with a thickness of 15 nm on LATP by an atomic layer deposition (ALD) technique.⁸⁹ The effect of these SEI layers was determined *via* electrochemical stripping and plating tests of symmetric cells and their performing time period. The outcome of these reports showed that the cells behaved totally different. The cell where the layer was coated through a chemical reaction performed stably for 200 hours.⁸⁸ It is worth noting that during the cell preparation, a liquid electrolyte was also added. In the case of another cell, symmetric cells performed for 600 hours; however, starting from 50 hours, the sample began

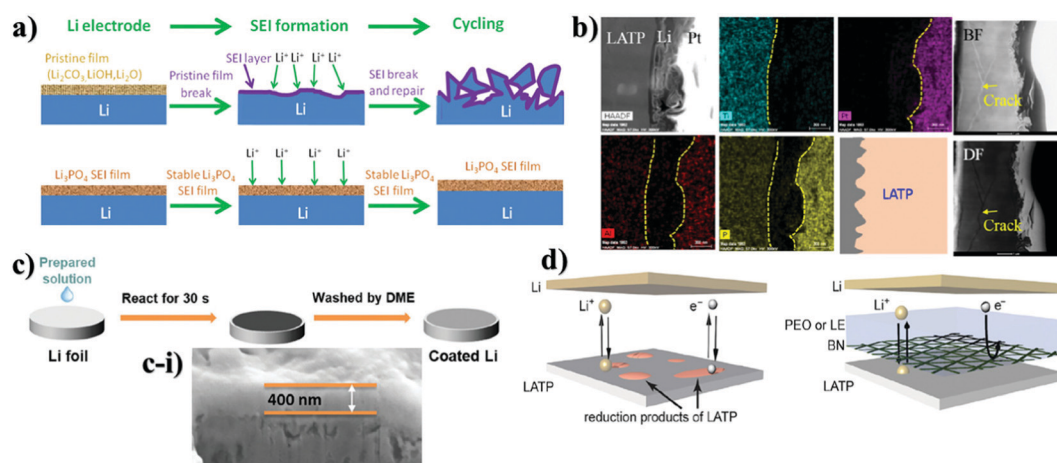


Fig. 2 Illustration of the deposition of various inorganic protective layers on LATP and their TEM and SEM images: (a) explanation of the role of the SEI layer;⁸⁸ (b) TEM-EDS of Li_3PO_4 deposited LATP after 100 cycles;⁸⁹ (c) nanocomposite layer formation through the dropping of solution; (c-i) cross-sectional view of the nanocomposite layer on LATP;⁹⁰ (d) scheme of BN and polymer combined thin layer on LATP.⁹¹



to show instability when the overpotential started to increase, showing definitely the same performance as bare LAMP.⁸⁹ According to the authors, the poor performance of the salt was explained by lower ionic conductivity of Li_3PO_4 compared to LAMP and degradation of the thin layer during repeated Li stripping and plating at high current density (above 0.5 mA cm^{-2}) (Fig. 2b). Nevertheless, the different influence of Li_3PO_4 on the performance of the solid electrolyte can be explained either by its thickness or deposition technique. However, addition of a small amount of a commercial liquid electrolyte has to be taken into consideration in the work presented by J. Liu, where steady performance can be attributed to the effect of the liquid electrolyte.⁹² Another possible explanation for the constant behavior of the cell could be the thicker layer which was durable enough for longer cyclability. An interesting approach where the solution containing LiBF_4 and $\text{Mg}(\text{ClO}_4)_2$ was cast on lithium to form metal fluorides as a protective layer was reported by Yang *et al.* (Fig. 2c).⁹⁰ The reaction between lithium metal and applied solutions enabled the production of three substances of LiF , MgF_2 and B_2O_3 which was confirmed *via* X-ray photoelectron spectroscopy (XPS). Unfortunately, the chemistry behind the reaction is not clear yet. Generally, this nanocomposite layer was formed within 30 seconds and had a thickness of approximately 400 nm, which was estimated by SEM (Fig. 2c-i). The benefits of the process were explained by facile and instant layer formation, and the great contribution of metal fluorides in the formation of a stable SEI layer in conventional lithium-ion batteries. The effect of coating on electrochemical performance was tested *via* EIS with a non-blocking lithium electrode, a Li stripping and plating test in a symmetric cell, and galvanostatic charge and discharge of a full cell with LiFePO_4 cathode. During the cell preparation, the ether-based liquid electrolyte of lithium bis(fluorosulfonyl)imide (LiFSI) in dimethoxy ethane (DME) was applied to the surface of LAMP. Consequently, the spectra of electrochemical impedance showed a dramatic decrease of

resistivity and the symmetric cell exhibited 300 hours of continuous lithium stripping and plating.⁹⁰ Application of nanocomposites was stated in the research of Cheng *et al.* as well.⁹¹ In this work, mechanically robust and chemically inert film of boron nitride (BN) was deposited for interfacial protection against reduction of $\text{Li}_{1.3}\text{Al}_{0.3}\text{Ti}_{1.7}(\text{PO}_4)_3$ (LAMP by low pressure chemical vapor deposition (LPCVD) technique) (Fig. 2d). Moreover, BN was combined with polyethylene oxide (PEO) and coated with a thickness of $\sim 1\text{--}2 \mu\text{m}$ to create a hybrid protective layer. This layer served as a barrier, which prevented LAMP reduction and demonstrated steady cycling behavior of around 500 hours in a symmetric cell of Li/LAMP/Li . Contrastingly, the sample with bare LAMP was degraded after 81 h.⁹¹ Intensive research on stabilizing the interface of the $\text{Li}_{1.3}\text{Al}_{0.3}\text{Ti}_{1.7}(\text{PO}_4)_3$ solid electrolyte towards lithium metal was undertaken through oxides of d-elements and their doping derivatives as well. The choice of oxides depended on their robustness and high mechanical and chemical stability towards lithium metal. The deposition process and cross-sectional TEM and SEM images with electrochemical performance are shown in Fig. 3. Y. Lui *et al.* used Al_2O_3 as an artificial layer, and also utilized ALD to deposit on LAMP with a thickness of 15 nm (Fig. 3a).⁸⁹ A work by Bai *et al.* introduced a 60 nm alumina doped ZnO (AZO) (Fig. 3b) interlayer *via* the magnetron sputtering technique (MST).⁹³ Hao *et al.* utilized 200 nm ZnO (Fig. 3c-i) as a protective layer for LAMP by MST as well (Fig. 3c).⁹⁴ Significant differences in the performance between Li_3PO_4 and oxide coatings on LAMP can be observed. A large overpotential is monitored in the initial cycles due to the insulating nature of the oxide materials. Overcoming this issue was carried out by electrochemical precycling and heating the cells to form a lithium ion conducting phase. Lui *et al.* stated that the Li–Al–O conducting layer formed only after 50 hours, and further performance up to 600 hours was balanced.⁸⁹ Bai *et al.* believed that this activation period of time could be solved by combining two oxides where interfacial resistivity between LAMP and an artificial layer can be

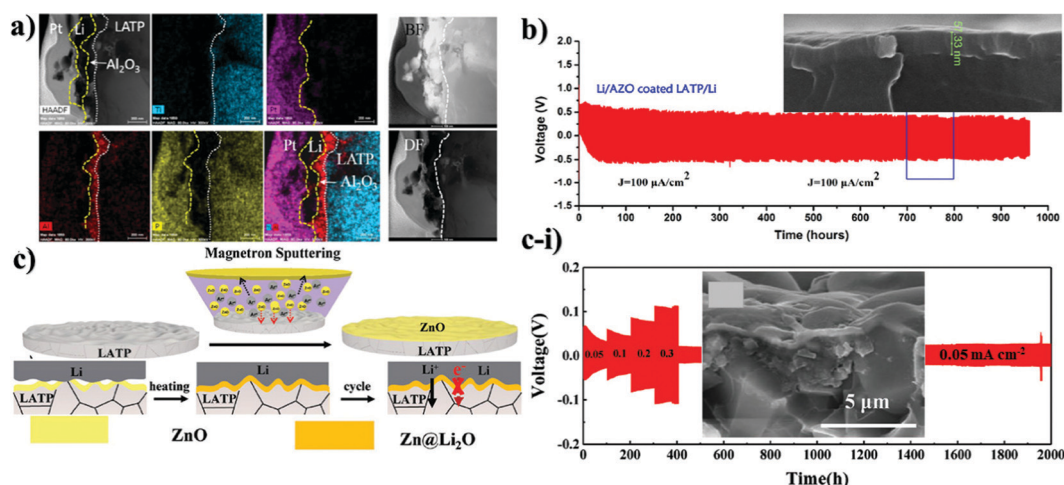


Fig. 3 Illustration of the deposition of various inorganic protective layers on LAMP and their TEM and SEM images as well as Li stripping and plating results: (a) TEM-EDS of Al_2O_3 deposited LAMP after 100 cycles;⁸⁹ (b) SEM image of AZO deposited LAMP and its electrochemical performance;⁹³ (c) illustration of magnetron sputtering of ZnO on LAMP; (c-i) SEM image of ZnO deposited LAMP and the electrochemical behavior of the ZnO deposited LAMP symmetric cell with Li.⁹⁴



suppressed. The symmetric cell of AZO coated LATP showed 1000 hours of permanent performance (Fig. 3b).⁹³ Although Bai *et al.* claimed insufficiency of bare ZnO as the buffer layer, a study conducted by Hao and co-workers with the same sputtering technique and material proved otherwise by achieving an outstanding performance of 2000 hours for symmetric cells (Fig. 3c-i).⁹⁴ According to the study, the lithiophilicity of ZnO allowed it to react with lithium and then form an SEI layer (Fig. 3c). The activation of the SEI layer on the cell required heating at 170 °C where the reaction between lithium metal and oxide material occurred. Oxide layers proved to increase the lifetime of LATP and protect it from reacting with lithium, but there were some issues to achieve that. For instance, it took some time to form the lithium ion conducting phase. Some researchers tried to combine LATP with additional lithium containing chemicals that also might help to achieve an improved cyclability.

Advancing NASICON-structured materials and solving their problems were also accomplished by using other types of solid electrolytes. For instance, Guhl and co-workers investigated the LiPON interlayer which was grown on the substrates of LATP and LATGP by the magnetron sputtering technique (Fig. 4a).⁹⁵ The thickness of the LiPON film was 200 nm. A comprehensive stepwise coating technique was accompanied *via* XPS to confirm interface formation. As it is known that Ge⁴⁺ is also unstable towards lithium, the authors stated that due to electrochemical potential differences this metal is more challenging to be reduced by the negative electrode. Thus, Li and colleagues suggested an unusual way to improve the stability between electrode and electrolyte through amorphous and nanocrystalline Li_{1.5}Al_{0.5}Ge_{1.5}(PO₄)₃ (a-LAGP) as a protective layer on the surface of the LATP solid electrolyte.⁹⁶ A similar

deposition technique to that in the previous report was used to create a thin layer less than 100 nm (Fig. 4b). Yet, these two reports have obtained valuable findings regarding the durability of NASICON-type electrolytes. Despite electrochemical potential differences of Ge⁴⁺ and Ti⁴⁺, during the continuous lithium ion insertion and extraction the materials went through reduction. As an illustration, nanocrystalline LATGP coated LATP symmetric cells performed for a modest 250 hours, where a linear increase in the overpotential was observed, and Fourier transform infrared (FTIR) spectra showed the presence of a small amount of GeO₂, which is the product of reduction.⁹⁶ The same phenomenon was observed in the case of deposited LiPON on LATP and LATGP. XPS depicted the chemical structure change on the surface of these substrates, possibly indicating that reduction began at the early stages of the deposition process.⁹⁵ The authors stated that the reduction occurred because of the lithium containing environment during the deposition procedure. The process and electrochemical performance with SEM images are demonstrated in Fig. 4. Furthermore, from the electrochemical analysis result (Fig. 4a-i), it can be clearly seen that increased impedance is related to reduced phase of lithium titanate, and LiPON coating. By all means, the lower ionic conductivity of LiPON corrupted the overall impedance of the system. Yet, interesting information regarding the early reduction phenomena of titanium was obtained, and it could be taken into consideration for further advancements in the field of interface between Li metal and NASICON-type solid electrolytes. Regardless of significant research on LATP, there were a few reports on solving the problem of LAGP too. Exceptionally, the reduction issue of the material was solved by using pure metals. Liu *et al.* studied an amorphous Ge thin film as a protective layer for Li_{1.5}Al_{0.5}Ge_{0.5}P₃O₁₂.⁷⁸ A thin film

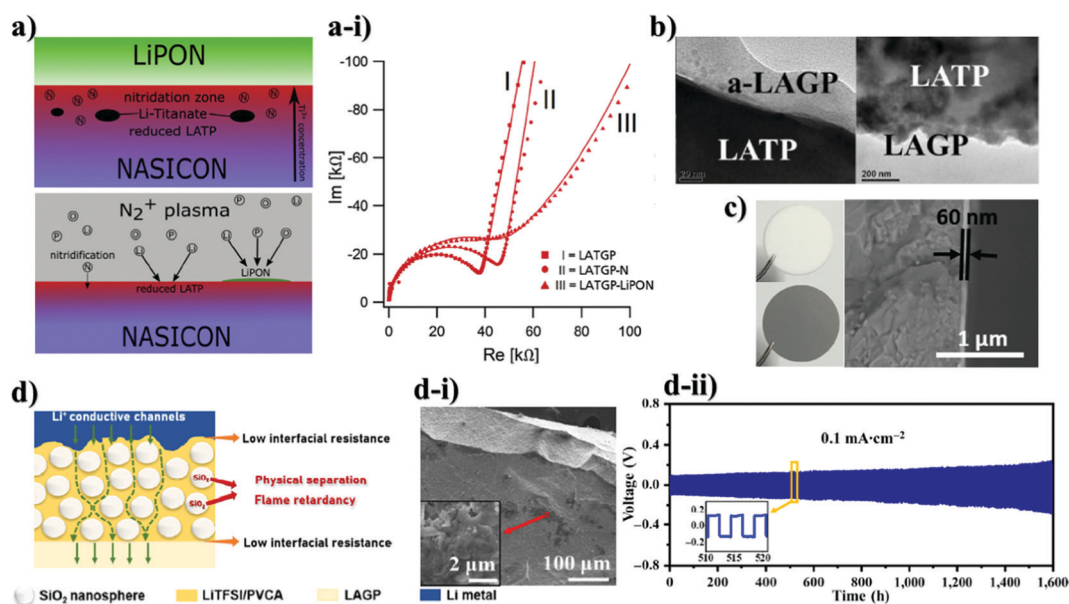


Fig. 4 The illustration of the deposition and SEM images of various samples with electrochemical performance: (a) the illustration of the NASICON-LiPON interface;⁹⁵ (a-i) EIS of LiPON coated LAGTP;⁹⁵ (b) SEM images of LAGP coated LATP;⁹⁶ (c) images of pristine and Ge coated LAGP and SEM image of Ge coated LAGP;⁷⁸ (d) the ionic conducting mechanism in the interface;⁹⁹ (d-i) SEM images of the hybrid layer with SiO₂ nanoparticulates;⁹⁹ (d-ii) result of Li stripping and plating performance.⁹⁹



of 60 nm was sputtered on the surface of the solid electrolyte with a precision etching coating system (Gatan 682) (Fig. 4c). Cortes and colleagues tested the influence of bare chromium (Cr) as a metallic protective layer for LAGP with a thickness of 30 nm *via* a Unifilm Sputtering system.⁹⁷ Compared to Ge metal with 200 hours of performance, Cr deposition demonstrated prolonged cyclability where the symmetric cells reached up to 850 hours of operation. In both cases, a slight increase in the overpotential in the initial cycles could be observed due to the lithium ion insulating properties of metals. In further cycles, it started to decrease due to the formation of a lithium ion conducting phase/alloy. The observation from XPS confirmed that after the Li stripping and plating process, there was a secondary phase formation. Generally, the results from electrochemical analysis indicated that the impedance of Ge coated LAGP with non-blocking electrodes was dramatically lower due to its wettability with lithium metal.⁷⁸ Therefore, the artificial interface layer provided intimate contact between LAGP electrolyte and Li metal anode. In the case of the Cr protection layer, the role of the metal was only as a physical barrier, which hindered Li plating and stripping.⁹⁷ Thus, symmetric cells were conditioned to cycle at 0.1 mA cm⁻² for 5 min in each direction for 16 hours before electrochemical measurements. Clearly, this pre-electrochemical activation aided in achieving further stable performance without having large overpotentials. Despite its stability the Cr metal suffered from degradation at 0.3 mA cm⁻² and higher current densities, which limited the performance of the cells. A outstanding performing time of 1500 hours for the LAGP solid electrolyte was obtained by Matic's⁹⁸ and Hu's⁹⁹ (Fig. 4d-ii) research groups. Such performance was delivered by designing a quasi-solid state paste from LAGP and an ionic liquid (IL) (50 : 50) and an interlayer of the Li bis(trifluoromethylsulfonyl)imide/poly(vinylene carbonate) (LiBTfMSI/PVC) polymer electrolyte with SiO₂ microspheres (Fig. 4d).⁹⁸ 0.1LiFSI/0.9BIB-FSI was used as the IL.

As a result, the combined LAGP-IL created a chemically stable interface with low resistance. Deep analysis revealed the formation of an additional SEI layer because of the reaction between IL and lithium. Yet, the authors believed that the

evolution of this layer stabilized the interface between electrolyte and electrode enhancing the ionic conductivity. The double layer allowed the cell to perform at higher current density up to 1 mA cm⁻², while the outstanding performance was obtained with 0.3 mA cm⁻². The efficient split of LAGP and Li prevented the side reaction and lithium dendrite nucleation. Still, the use of IL is not beneficial in terms of high cost. The hybrid interlayer also resulted in a decrease in the interfacial resistance between lithium metal electrode and LAGP electrolyte where SiO₂ physically separated and acted as a filler to reduce the degree of crystallinity of the polymer (Fig. 4d and d-i).⁹⁹ Table 2 provides a summary of inorganic buffer layers and their electrochemical performance with LATP and LAGP.

A considerable number of inorganic materials were introduced as artificial buffer layers to solve the critical problem of LATP and LAGP solid electrolytes' reduction by Li metal. The role of these layers varies from one to several. Regardless of the protection this layer provides intimate contact between electrode and solid electrolyte that influences the cells' longer cyclability and kinetics. According to many reported research studies, the artificial layers can be designed *via* various types of materials such as metal oxides, lithium salts, nanocomposites, bare metals and even other solid electrolytes. Each material had unique chemistry and mostly some of them formed alloys and others remained inert with electrodes. To form lithium ion conducting phases, the vast majority of them required pre-cycling or heating beforehand. So far the most promising inorganic compound as a protective layer has been ZnO. The most prolonged cyclability of around 2000 hours was obtained with a lithium symmetric cell. Even though it showed outstanding long performance, ZnO was not stable at high currents. Low current operation applied not only for ZnO, but also to other artificial buffer layers. An increase in current led to decomposition of these layers, leading to poor performance and undesired contact between two solid materials. Another promising interlayer was LAGP-IL quasi-solid material, which exhibited excellent performance under high current density. Due to the formation of the SEI layer on top of the protective layer,

Table 2 Available inorganic protective layers for LATP and LAGP and their electrochemical performance

Solid electrolyte	Artificial layer	Thickness of the artificial layer	Symmetric cell performance, hours	Full cell performance	Condition	Ref.
LATP	Li ₃ PO ₄	200 nm	200	50 cycles	0.1C, 95.2% capacity retention, LFP cathode	92
LATP	Li ₃ PO ₄	15 nm	100			89
LATP	Mixture of LiF, MgF ₂ and B ₂ O ₃ nanocomposite	400 nm	300	500 cycles	0.13 mA cm ⁻² 1.5C, LFP	90
LATP	BN and PEO hybrid layer	~1–2 μm	500	500 cycles	0.3 mA cm ⁻² , 96.6% capacity retention	91
LATP	Al ₂ O ₃	15 nm	600			89
LATP	AZO	60 nm	960	50 cycles	50 cycles at 60 °C at 0.1 mA cm ⁻²	93
LATP	ZnO	200 nm	2000	200 cycles	0.05 mA cm ⁻² , 200 cycles at 0.02C	94
LATP	LiPON	200 nm				95
LATP	a-LAGP	Less than 100 nm	250		0.01 mA cm ⁻²	96
LAGP	Cr	30 nm	850		0.2 mA cm ⁻²	97
LAGP	Ge	60 nm	200		0.1 mA cm ⁻²	78
LAGP	IL-LAGP		1500		0.3 mA cm ⁻²	98
LAGP	(LiBTfMSI/PVC) and SiO ₂		1500	100 cycles, LFP,	0.1 mA cm ⁻²	99
				0.075 mA cm ⁻²		



it enhanced the cell behavior allowing continuous stripping and plating and evenly distributing lithium flux preventing dendrite growth.

Polymer based protective layers

Along with the inorganic protection layer coatings, there have been numerous works that endeavored to use polymer films that have high ionic conductivity and electron insulating nature as a physical barrier for this purpose as well, which offer additional benefits because of their unique properties such as flexibility, high degree of adhesion and dendrite growth prevention.^{100,101} The polymers containing Li salts are promising candidates for interface advancements in all-solid-state batteries owing to their high stability towards Li metal and space-charge suppression at the interface.^{102–104} Salt containing/liquid containing polymer materials wet the surface of Li metal and minimize interfacial resistance and create very intimate contact and fill the gap at the electrolyte and electrode surface.⁷⁴ Li ions of dissolved Li salts coordinate with the electron-donor groups of the polymer host in a polar polymer matrix. Ion conduction in polymer coating occurs by the electric field which forces ions to hop from one coordinating site to another basically in the amorphous region.¹⁰⁵ Various strategies have been applied to address these issues of ion conductive polymers and nowadays there are a wide range of systems with different strategies proposed for application in LIBs.¹⁰⁶ The combination of polymers with ceramic electrolytes is also one of the promising ways of solid state electrolyte advancement. Early in order, one of the pioneering groups led by Goodenough presented a polymer/ceramic/polymer sandwich electrolyte.¹⁰⁷ A cross-linked poly-

(ethylene glycol)methyl ether acrylate 3D framework formed a flexible and low-cost membrane which was pressed on either side of LATP pellets. Integrated polymer-ceramic design allowed solving the problem of each electrolyte, where the ceramic blocked anion transport, while the polymer suppressed dendrite nucleation. However, the combination of polymer and ceramic increased the overall resistivity of the cell. Despite the increase in impedance, the prevention of side reactions and dendrite formation led to its feasibility for solid-state batteries. The effect of the polymer was characterized by assembling a full cell with LFP cathode and the cell performed steadily for 640 cycles.¹⁰⁷ The sandwich system created many other opportunities in terms of use of other polymer materials. Currently, the most widely investigated polymer material in energy storage application is polyethylene oxide because of its high ionic conductivity, high liquid absorption, flexibility and compatibility with lithium metal.^{102,104,108} Yet, polymer materials used in lithium batteries met requirements such as high mechanical strength, excellent fire resistance and excellent thermal stability. Thus, there have been works that put stress on solving the problem of the NASICON-type electrolyte towards Li by coating it with PEO.

The role of polymer layers and their cross-sectional SEM views with electrochemical behavior are shown in Fig. 5. Cai *et al.* architected a flexible modified PEO coating on LATP (Fig. 5a and a-i) for ambient-temperature solid state Li batteries.¹⁰⁹ Jin *et al.* engineered the interface based on the multifunctional layer of PEO with LiTFSI salt (Fig. 5b).¹¹⁰ Koizumi *et al.* designed a comprehensive composite layer out of PEO, an ionic liquid and oxide filler of BaTiO₃ (or SiO₂) for LAGTP.¹⁰⁰ All three reports concentrated on decreasing the interfacial impedance of Li and solid electrolyte along with addressing the side reaction issue. Cai *et al.* achieved a decrease of interfacial impedance from 30 000

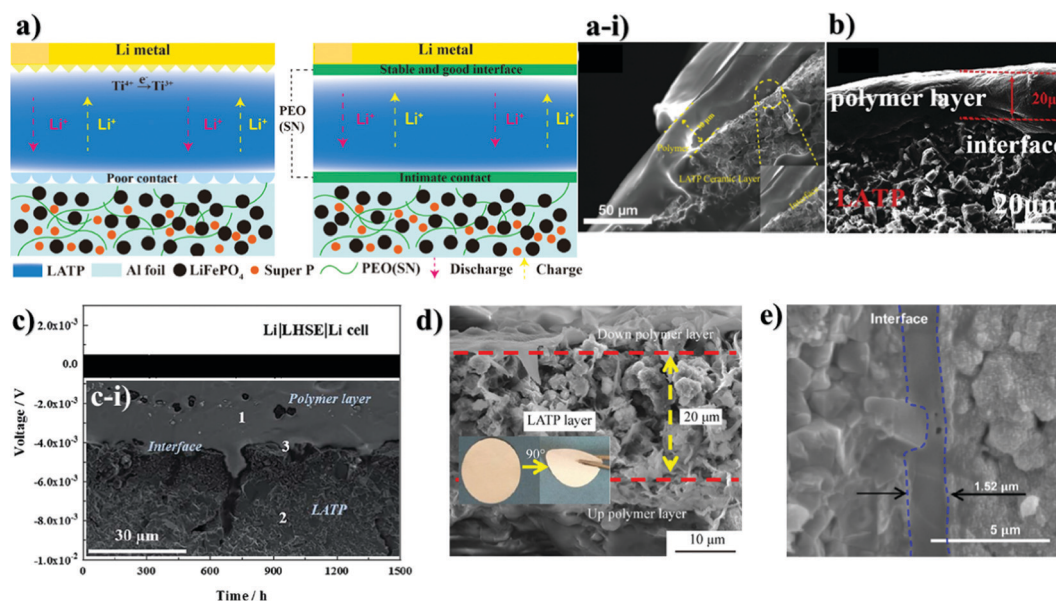


Fig. 5 The cross section illustration and SEM images of various samples with electrochemical performance: (a) the illustration of lithium ion conduction on PEO coated LATP; (a-i) PEO coated LATP cross section;¹⁰⁹ (b) SEM image of the PEO interlayer;¹¹⁰ (c) illustration of polymer coating and galvanostatic profile of the full cell;¹¹¹ (d) SEM image of MEEP-PVDF-HFP polymer coating on LATP;¹¹² (e) (P(AA-co-MA)) interlayer.¹¹³



to 280 ohm cm^{-1} by drop casting the polymer on the ceramic pellet. However, the performing period of the symmetric cell was only 200 hours at 0.1 mA cm^{-2} . The cell assembled by Jin and colleagues with the polymer layer showed significant improvements where the reduction of interfacial resistance was monitored and the symmetric cell performed for 400 hours at low current density (0.05 mA cm^{-2}).¹¹⁰ The symmetric cell with the composite interlayer exhibited cycling only for 100 hours with a higher current density of 0.5 mA cm^{-2} , and this was reached at $60 \text{ }^\circ\text{C}$.¹⁰⁰ There have been reports on other types of complex polymer materials. For instance, Chen *et al.* tried to resolve the problem of LATP by an ultrathin poly[2,3-bis(2,2,6,6-tetramethylpiperidine-*N*-oxycarbonyl)-norbornene] (PTNB) polymer coating with a high Li concentration ionic liquid electrolyte (ILE) ($0.4\text{LiFSI}-0.6\text{Pyr}_{14}\text{FSI}$) on Li metal.¹¹⁴ LATP with PTNB coating performed for nearly 800 hours at 0.1 mA cm^{-2} current density. On the other hand, the full cell with $\text{LiNi}_{0.8}\text{Co}_{0.1}\text{Mn}_{0.1}\text{O}_2$ (NCM₈₁₁) cathode performed for 200 cycles with a slight decrease in capacity. Yu *et al.* worked on the coating of LATP ceramic material with a protective polymer layer, the formulation of which was as follows: a mixture of 65.3 wt% poly[bis(2-(2-methoxyethoxy)ethoxy)phosphazene] (MEEP) polymer, 21.7 wt% poly(vinylidene fluoride-*co*-hexafluoropropylene) (PVDF-HFP) and 13.0 wt% lithium bis(oxalato)borate (LiBOB) (Fig. 5c).¹¹¹ This composite had a thickness of around $120 \text{ }\mu\text{m}$ in dry state. The final assembled symmetric cell showed a stable performance of 1500 hours at 0.13 mA cm^{-2} current density. The full cell was assembled with $\text{Li}_3\text{V}_2(\text{PO}_4)_3$ and carbon nanotube (CNT) composite cathode. As a result, 500 cycles with 100% coulombic efficiency performance were achieved. In fact, the prolonged time and good electrochemical outcome were achieved at an elevated temperature of $50 \text{ }^\circ\text{C}$. Both works demonstrated that polymer coatings on LATP can prevent the side reaction and provide longer cycle life for LATP towards lithium metal. Another work applied one component system of PVDF-HFP which was simply coated on the LATP pellet (Fig. 5d).¹¹² The research's goal was to stabilize the electrolyte by keeping the impedance at one point. By all means, up to 10 days, the sandwiched LATP exhibited the same impedance value. A full cell with LiCoO_2 cathode material and modified solid electrolyte performed for over 140 cycles with a discharge capacity of around 145 mA h g^{-1} at 0.1C. The further

development in this field also was researched by Lu and co-workers.¹¹³ A LAGP solid electrolyte was covered with poly(acrylic acid-*co*-maleic acid) (P(AA-*co*-MA)) *via* spraying (Fig. 5e). As a lithium source LiCl was utilized. The concentration of the salt also played a crucial role in decreasing the interfacial impedance. Although the interlayer slightly decreased the impedance between the electrolyte and the Li metal, the performance of the symmetric cell was moderate at only 165 hours at 0.7 mA cm^{-2} . This poor performance was due to the negligible changes in the LAGP solid electrolyte during the continuous stripping and plating. The authors claimed that this reaction led to the reduction of Ge^{4+} to Ge^0 , and some of them formed alloys with Li metal. Despite obtaining lower interfacial resistivity, the performance of these interlayers still requires further improvements in order to increase the stability towards lithium metal. The use of PEO coated LATP has gained significant attention in the field of lithium-sulfur batteries as well. The coating of the protection layer not only protects LATP from reduction, but also addresses the problem of the polysulfide shuttle effect in sulfur-containing batteries. The illustrations of battery components and SEM images of interlayers with electrochemical results are depicted in Fig. 6. Wang *et al.* did research on combination of solid electrolytes and sulfur-based electrodes where NASICON-type ceramic and sulfurized polyacrylonitrile cathodes were used (Fig. 6a).¹⁰¹ The direct contact between LATP and anode was solved *via* PEO that contained LiTFSI (Fig. 6a-i). The solid polymer electrolyte (SPE) precursor solution was simply drop coated onto LATP and dried. This kind of cell with lithium metal on both sides performed for more than 250 hours, and according to the authors it prevented the dendrite growth. Further, a full solid cell with sulfur/polyacrylonitrile (SPAN) cathode had an initial discharge capacity of 1793 mA h g^{-1} , which dropped to 784 mA h g^{-1} after 120 cycles. However, the electrochemical characterization of solid cells was conducted at $75 \text{ }^\circ\text{C}$, where PEO operates beneficially well. Manthiram's group tried to solve the problem of sulfur batteries by introducing LATP as the electrolyte which was modified by a layer of polymer with intrinsic nanoporosity (PIN) (Fig. 6b-i and b-ii).¹¹⁵ PIN with precisely designed nanoporosity had primarily roles such as an electrical insulator and provider of a lithium ion transport path, and at the same time LATP aided in suppressing the polysulfide shuttle effect.

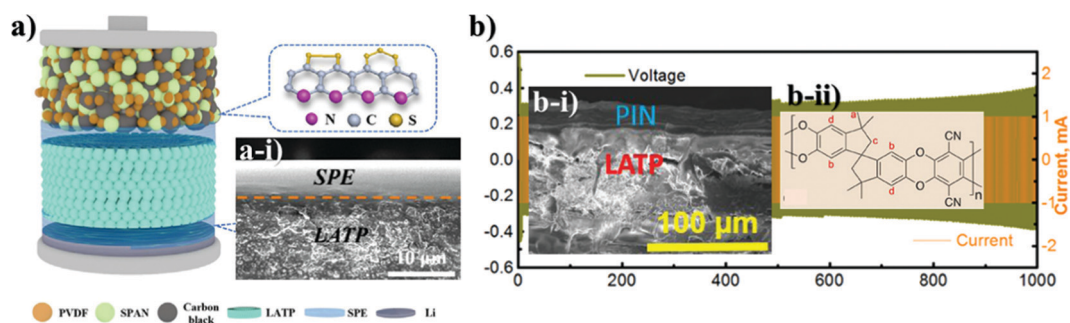


Fig. 6 SEM images and illustrations of various cells with their electrochemical performance: (a) solid polymer layer on LATP; (a-i) illustration of cell characterization; (a-ii) electrochemical behavior of the cell,¹⁰¹ (b) the formula of PIN; (b-i) PIN coated LATP; (b-ii) the symmetric cell performance of PIN coated LATP.¹¹⁵



Table 3 Available polymer protective layers for LATP and LAGP with electrochemical performance

Solid electrolyte	Artificial layer	Thickness of the layer	Striping and plating time	Full cell performance	Ref.
LATP_8 wt% of Nb ₂ O ₅	PEO	30 μm	200 h at 0.5 mA cm ⁻²	160 mA g ⁻¹ at 0.1C, LFP, CR = 82%	109
LATP	PEO	20 μm	400 h at 0.05 mA cm ⁻²	139.5 mA g ⁻¹ at 0.05C	110
LAGTP	PEO_BaTiO ₃ (or SiO ₂)	50 μm	100 h at 0.5 mA cm ⁻²		100
LATP	PTNB		792 h at 0.1 mA cm ⁻²	200 mA g ⁻¹ at 0.05C (Fig. 5d), CR is 99%	114
LATP	MEEP_PVDF-HFP and LiBOB salt	~120 μm	1500 h at 0.13 mA cm ⁻² and 50 °C	125 mA g ⁻¹ at 0.2C, CE is 100%	111
LATP	PVDF-HFP	~2 μm		145 mA g ⁻¹ at 0.1C	112
LAGP	P(AA-co-MA)	~1.5 μm	55 h at 0.7 mA cm ⁻²		113
LATP	PEO	~7 μm	220 h at 0.25 mA cm ⁻² at 75 °C	1793 mA h g ⁻¹ at 75 °C	101
LATP	PIN	20–25 μm	1000 h at 1 mA cm ⁻²	1110 mA h g ⁻¹ at 0.1C	115

CR, capacity retention. CE, Coulombic efficiency.

PIN was deep coated on LATP (Ohara Inc.), where the bond between them was mechanical anchoring and interhooking (Fig. 6b-i). Yet, a small amount of liquid electrolyte was added to the 20–25 μm thick layer of PIN and a cyclability of around 1000 hours for a Li/PIN/LATP/PIN/Li symmetric cell was achieved with stable potential (Fig. 6b). Electrochemical results are depicted in Table 3.

Polymer coating is considered to be a moderate choice towards preventing the reduction of solid electrolytes in contact with the Li anode. The reasons for such candidacy are wettability, ability of polymers to adhere well on the surface of ceramics and presence of lithium ions in their matrices for high lithium ion conductivity. Comparably, except in a few cases, polymer coatings performed weaker than inorganic protection layers. However, it should be taken into consideration that currently available polymer electrolytes are limited by low ionic conductivity and high operating temperature and judging their perspectives as interlayers is still questionable. Still, utilization of NASICON type electrolytes with polymer coating greatly attributed to the progress of Li-S batteries, where ceramics only conducted lithium ions and blocked the migration of polysulfides, and polymer coating was applied to advance the interface between the ion conducting electrolyte and the lithium metal. The robust nature of inorganics steadily protects while the polymer coating deteriorates at certain current densities. Yet, the same issue was reported for inorganic buffer layers too. Compared to inorganics, in most studies, it was revealed that polymer coatings have a superior advantage over inorganics where they evenly distribute lithium deposition by preventing lithium dendrite nucleation.

Composite electrolytes

The application of a NASICON-type electrolyte in an all-solid-state energy storage system could be also realized through blending with lithium ion conducting polymer materials. By doing so, the direct contact of ceramic and lithium metal is compensated by polymers. To overcome the drawbacks of single-phase inorganic and polymer solid-state electrolytes (SSEs) while maximizing their benefits, several recent studies have shown that combining inorganics and polymers to form composite solid-state electrolytes

(CSSEs) resulted in considerable performance improvement.¹¹⁶ Interestingly, there is a debate regarding the role of each component in ionic conductivity. Some say that enhancement of ionic conductivity in composite electrolytes is due to the reduced crystallinity of the polymer matrix by fillers (ceramics) while others believe that the role of these active fillers is more complicated. Thus, among researchers several hypotheses have been proposed. The first one is based on the formation of a highly conductive interface between polymer matrix and inorganic fillers which acts as a primary conduction pathway for Li-ions. The second hypothesis suggests that ion conduction occurs through a continuous network of ceramic particles that are well linked to each other where the Li ion can hop without obstacles.¹¹⁷ A study conducted by Lim and colleagues claimed that an increase in ionic conductivity and an improvement in the thermal stability of solid electrolytes were achieved by adding ceramics (NASICON) in the polymer matrix or by copolymerization with other materials.¹¹⁵ These two modifications aid in decreasing the glass transition temperature and slowing polymer crystallization. In this regard, a number of studies on composite electrolytes with NASICON-type structure were carried out in recent years. As polymers polyethylene oxide (PEO), polyvinylidene fluoride (PVDF), poly methacrylic acid (PMAA), polyvinyl chloride acetate (PVCA) and hexafluoropropylene (HFP) were used. The majority of works demonstrated the advancements through electrochemical impedance spectroscopy and performance of full cells. A group of authors designed composites with PVDF binder. The choice of the polymer was due to the good impact strength, high thermal and chemical resistance, as well as uniform dispersion of LATP particles in its matrix. Composite membranes and their fabrication with electrochemical performance are shown in Fig. 7. Shi *et al.*¹¹⁸ and Liang *et al.*¹¹⁹ investigated the electrochemical properties of the LATP/PVDF membrane for rechargeable lithium ion batteries. Shi and coworkers synthesized LATP by a solution method and dispersed it in poly(vinylidene fluoride) (PVDF) to form a composite material by casting.¹¹⁸ The authors investigated the compatibility of the LATP ceramic and the binder, according to which the lithium-ion conductivity of CEM (9.6×10^{-4} S cm⁻¹) increased two times compared to bare LATP and an electrochemical stability window up to 5.67 V *versus* Li⁺/Li was achieved due to the plasticization effect of LATP particles in PVDF.



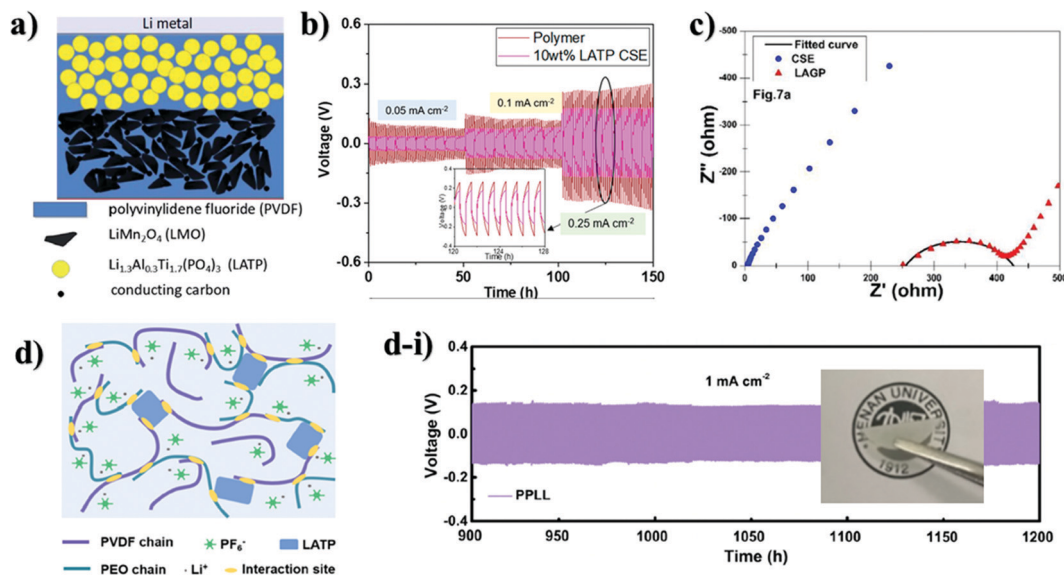


Fig. 7 Images of composite electrolytes and their preparation scheme and performances: (a) schematic presentation of the solid-state Li/LMO cell assembled with the composite polymer electrolyte;¹¹⁹ (b) Li stripping and plating performance of L ATP/PVDF-HFP at various current densities;¹²⁰ (c) LAGP/HFP-PVDF membranes' electrochemical impedance spectra;¹²¹ (d) illustration of the L ATP/PVDF-PEO hybrid electrolyte and the membrane; (d-i) with Li stripping and plating performance.¹²²

This was achieved by adding highly crystalline L ATP in large proportions (2:1), but exceeding this ratio led to agglomeration and negatively affected the surface effect. Liang's group investigated the ratio of PVDF and L ATP to advance electrolyte performance.¹¹⁹ In contrast to the previously reported work, it was revealed that by increasing the mass of L ATP by almost 90 wt% in a hybrid solid electrolyte, the ionic conductivity and electrochemical stability were also improved.

Improved results were observed with L ATP ceramic which acted as a gel center, which increased the amorphous phase of the polymer and the concentration of the carrier, which favorably affected the synergism of Li-ion migration and increased ionic conductivity. The authors achieved a high lithium transference number value of 0.86 by using a high ratio of L ATP ceramic. Further, the full cell with LiMn_2O_4 cathode, composite electrolyte and lithium metal was assembled (Fig. 7a), and it provided a high discharge capacity of 128 mA h g^{-1} with 98.3% capacity retention after 200 cycles. Research led by Li and Wang¹²⁰ focused on the same combination but with an additional polymer of HFP into PVDF. The uniqueness of the work was the performance of hybrid electrolytes without absorption of the liquid electrolyte. The combination of PVDF with HFP has a number of preferable characteristics such as high dielectric constant, low degree of crystallinity due to the HFP unit, as well as excellent thermal stability and compatibility with electrodes. Consequently, L ATP (10 wt%) ceramic embedded into the PVDF-HFP matrix exhibited quite a high ionic conductivity of $2.3 \times 10^{-4} \text{ S cm}^{-1}$. The symmetric cell at the lowest current density performed steadily, while the increase in current density led to voltage instability (Fig. 7b). During the Li plating/stripping process, it was found that the interface between the Li anode and the CSE membrane remained stable at various current densities, and the PVDF-HFP polymer protected L ATP from reaction with the Li anode.

The work by Das and colleagues¹²¹ introduced another NASICON type solid electrolyte, 20 wt% LAGP, as a filler for a similar polymer matrix as in the previous report, HFP-PVDF, and lithium bis(trifluoromethanesulfonyl)imide (LiTFSI) and 1-ethyl-3-methylimidazolium bis-(trifluoromethylsulfonyl)-imide (EMITFSI) were also used. Addition of an ionic liquid and LAGP increased the amorphous regions and improved the channels for the migration of Li ions. As a result, the composite solid electrolytes have shown the highest ionic conductivity (4.49 ± 0.31) $\times 10^{-3} \text{ S cm}^{-1}$ at room temperature (Fig. 7c). Yi *et al.* used the cross-linked structure of PVDF and PEO polymers and combined with L ATP to improve the ability to transfer lithium ions and enhance the mechanical properties of solid-state batteries.¹²² In the research they stated that a combination of these two polymer materials and addition of ceramic resulted in a lower crystal dual-matrix system (Fig. 7d). The improvement of the mechanical strength of the matrix and the formation of amorphous areas that contribute to the transport of Li ions upon cycling were caused by abundant and irregular bonds in the composite electrolytes. In addition, a liquid electrolyte LiPF_6 was added into the composite, which improved the performance of the system. As a result, the symmetric cell performed for prolonged 1000 hours and a relatively high ionic conductivity of $5.24 \times 10^{-4} \text{ S cm}^{-1}$ was obtained at RT (Fig. 7d-i). The full cell with LFP performed steadily up to 500 cycles at 1C. Furthermore, an approach of the application of composite polymer electrolytes was described by Singh *et al.*, where they synthesized $5\text{LiCF}_3\text{SO}_3-95[\text{PEO}_{1-x}\text{L ATP}_x]$ in a wide range of combinations.¹²³ Equally dispersed L ATP crystallites with the composition of 30 PEO/70 L ATP led to a slight increase in Li-ion conductivity ($10^{-4} \text{ S cm}^{-1}$) and an increase in the Li ion transfer number from ~ 0.12 for bare PEO to ~ 0.46 for 70 L ATP and 30 PEO. The full information regarding the electrochemical performance is provided in Table 4.



Table 4 Composite electrolyte membranes and their performance

Composite electrolyte	Cathode	Performance mA h g ⁻¹	Condition	Ref.	
LATP/PVDF	LFP	163.2	0.1C	118	
		155.3	0.2C		
	First discharge capacity	150.0	0.5C		
		141.2	1C		
		After 50 cycles	154.7		0.1C
			CR is 94.8%		
			146.8		0.2C
			CR is 94.5%		
			127.1		0.5C
			CR is 84.7%		
		200 cycles	118.8		1C
			CR is 84.1%		
		LFP	147.1		0.1C
			CR is 90.1%		
LATP/PVDF	LMO	127.8	0.1C	119	
		In the beginning			
		119.9	0.2C		
		113.8	0.5C		
		104.5	1C		
		92.1	2C		
		118	0.2C		
		CR is 98.3%			
		107.4	0.2C		
		CE is 100%			
LATP/PVdF-HFP	LFP	155		120	
	5th cycle	130			
	After 50 cycles				
LAGP/HFP-PVdF	LFP	151	0.05C	121	
	After 50 cycles	CR is 100%			
LATP/PVdF-PEO	LFP	CR is 93.95%	0.1C	122	
	After 500 cycles	CR is 84.77%	1C		
	After 550 cycles				
5LiCF ₃ SO ₃ -95[PEO _{1-x} LATP _x]		AE is 0.49 eV		123	

CR, capacity retention. CE, Coulombic efficiency. AE, activation energy.

Composite electrolytes have gained a significant amount of attention due to their versatile characteristics. Fabrication of this hybrid system reduced cons of each electrolyte type. As already mentioned above, the combination of ceramics and polymer matrix significantly improves the performance, where LATP decreases the crystallinity of the polymer and aids in maintaining the amorphous phase while the polymer helps in preventing direct contact with lithium. In addition, the ion-conducting mechanism in composite solid electrolytes is highly dependent on the composition. Ion conductive pathways were in interfacial regions, where inorganic active filler concentration was less than 5%, while an increase in the filler content led to ionic conductivity through Li-conducting ceramics or on the interface as well. However, it should be taken into consideration that a large amount of active fillers negatively influenced, as fillers started to agglomerate and damaged the percolated network within the electrolyte. Regarding the transference number value, it was leveled up with LATP, as ideally ceramics have the transference number of one. Consequently, a combination of these electrolytes allowed one to obtain high lithium ion conducting composite solid membranes. The highly crystalline LATP with high stability under various conditions turned out to be the outstanding candidate for composite electrolytes by solving several dramatic issues.

Summary and future perspectives

The progress of next generation energy storage systems enabled scientists to expand their vision regarding the fabrication of battery components and solving their current problems. The implementation of solid electrolytes into battery packages is under progress, and the exact duration of this process is a matter of time and other factors. As the object of this review, NASICON structured LATP and LAGP ceramics are gaining attention due to their stability towards air and moisture under ambient conditions; these materials are very promising electrolytes for the next generation batteries including all-solid-state systems. By all means, the synthesis routes enable control of the morphology and grain size of these materials that significantly influence their ionic conductivity.⁴⁵ Further improvements of these solid electrolytes include applying interlayers that reduce the interfacial impedance, prevent dendrite nucleation and, most importantly, protect the electrolyte from the side reactions. Summarizing the above paragraphs, it was clear that various types of coating materials on LATP influence differently, and the performing status of these layers and composite electrolytes is depicted in Fig. 8.

As inorganic buffer layers, lithium ion conducting and non-conducting materials such as lithium salts, nanocomposites, oxides and hybrid layers with SiO₂ nanoparticles, bare metals,



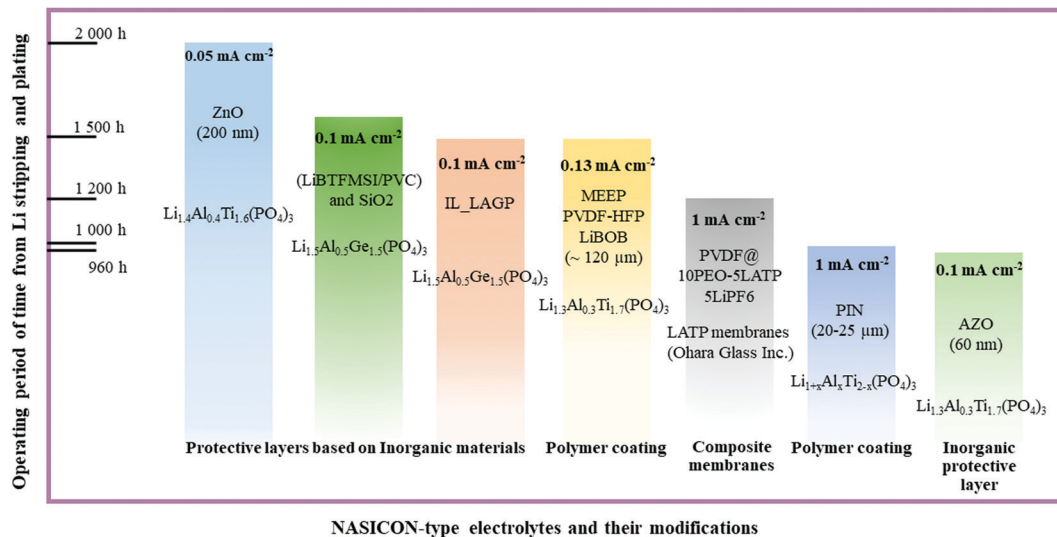


Fig. 8 Advancement of NASICON-type electrolyte's interface through coating with various types of materials and composite electrolytes and their current status.

and other types of solid electrolytes were utilized. In the class of inorganic protective layers, an excellent performing time period exceeding 2000 hours was attained with the ZnO₂ protective layer with a thickness of 200 nm (Fig. 8). Generally, non-lithium conducting oxide materials and their doping derivatives exhibited a long functioning time at low current density, because of their robustness and high stability. Still, the activation of these layers requires precycling or heat treatment to activate the lithium ion conducting phase. On the other hand, the excellent performance in polymers was achieved by MEEP in PVDF-HFP with LiBOB film. It should be noted that polymer coatings are tested at higher current densities than inorganics and they could achieve a performance of 1500 hours at 0.13 mA cm⁻² (Fig. 8). The major

advantage of the polymer coating is prevention of dendrite nucleation by evenly distributing the lithium deposition. In contrast to inorganic protective films where comprehensive operating deposition tools are used, the polymer films do not require such complicated procedures. Simple casting of films is highly beneficial in terms of cost. Some other option to prevent the side reactions was a combination of inorganic and polymers to fabricate hybrid composite lithium ion conducting materials. Particularly, the high ion conducting phase was obtained by adding LATP or LAGP into the polymer matrix which increased the transference number significantly. One of the excellent performing periods of 1200 hours at 1 mA cm⁻² was obtained by the PVDF@PEO_LATP composite membrane with LiPF₆ liquid



Fig. 9 Pros and cons of inorganic and polymer coatings as well as composite electrolytes.



electrolyte (Fig. 8). The ionic conductivity was escalated, because ceramics reduced the crystallinity of the polymer phase and the direct contact between NASICON and lithium metal was prevented by the presence of polymer. The overall evaluation of each approach is given in Fig. 9, and depending on their uniqueness they displayed benefits and drawbacks.

It is very important to have a variety of alternatives to solve the emerged problem of solid electrolytes. Despite robustness, the inorganic protective layers tended to have a low or non-ionic conductive nature that requires a longer period to turn them into a conducting phase. Plus, the deposition tools usually operate under certain conditions which is time consuming. Polymer coating as an interlayer and composite electrolytes were the most optimal option to improve the interphase. The lower ionic conductivity is easily solved by using ion conductive copolymers or addition of fillers. Their coating and fabrication were straightforward without complex operating tool involvement. The wettability of polymers played a crucial role providing an intimate contact between electrode and electrolyte, and preventing the most dramatic issue of lithium metal batteries, the dendrite growth. Yet, the mechanical strength of polymers needs to be further engineered for longer cyclability at higher current density.

Many research studies endeavored to promote the ionic conductivity of solid electrolytes without putting effort on designing solid state full cells. There have been a number of research studies regarding solving the interphase problem of solid electrolytes. Most importantly, the majority of works described deposition techniques and materials by observing the electrochemical behavior of cells. Instead, the fundamental research on the lithium ion transport mechanism between interlayers and solid electrolytes could be the subject for further investigations. This kind of work could be more beneficial with *in situ* or *operando* characterization techniques to fully understand the process in detail. Deterioration of protective layers can be monitored by analyzing structural and chemical stability and for this purpose modelling techniques could be applied. Simulations may provide which kind of approach would be the most beneficial for advancing NASICON type solid electrolytes regarding the stability towards various conditions.

Conflicts of interest

There are no conflicts to declare.

Acknowledgements

This research was supported by the research grant #51763/IIIϕ-MIIPOAII PK-19 “New materials and devices for defense and aerospace applications” from MDDIAI Republic of Kazakhstan.

References

- W. Jing, Y. Yan, I. Kim and M. Sarvi, *Adv. Mech. Eng.*, 2016, **8**, 1–8.
- M. Wada, *J. Environ. Sci.*, 2009, **21**, 745–749.
- ed. Y. Kato, Z. Ogumi and J. M. P. Martín, *Lithium-Ion Batteries*, Jenny Stanford Publishing, 2019.
- N. Tolganbek, A. Mentbayeva, N. Serik, N. Batyrgali, M. Naizakarayev, K. Kanamura and Z. Bakenov, *J. Power Sources*, 2021, **493**, 229686.
- F. M. Hassan, Z. Chen, A. Yu, Z. Chen and X. Xiao, *Electrochim. Acta*, 2013, **87**, 844–852.
- J. Y. Liao, D. Higgins, G. Lui, V. Chabot, X. Xiao and Z. Chen, *Nano Lett.*, 2013, **13**, 5467–5473.
- N. Liu, H. Wu, M. T. McDowell, Y. Yao, C. Wang and Y. Cui, *Nano Lett.*, 2012, **12**, 3315–3321.
- D. Ahn, X. Xiao, Y. Li, A. K. Sachdev, H. W. Park, A. Yu and Z. Chen, *J. Power Sources*, 2012, **212**, 66–72.
- A. Luntz, *J. Phys. Chem. Lett.*, 2015, **6**, 300–301.
- K. Liu, Y. Liu, D. Lin, A. Pei and Y. Cui, *Sci. Adv.*, 2018, **4**, eaas9820.
- A. Abouimrane, J. Ding and I. J. Davidson, *J. Power Sources*, 2009, **189**, 693–696.
- H. Dai, W. Xu, Z. Hu, Y. Chen, X. Wei, B. Yang, Z. Chen, J. Gu, D. Yang, F. Xie, W. Zhang, R. Guo, G. Zhang and W. Wei, *Front. Energy Res.*, 2020, **8**, 1–7.
- Z. A. Grady, C. J. Wilkinson, C. A. Randall and J. C. Mauro, *Front. Energy Res.*, 2020, **8**, 1–23.
- F. Bai, K. Kakimoto, X. Shang, D. Mori, S. Taminato, M. Matsumoto, Y. Takeda, O. Yamamoto, H. Izumi, H. Minami and N. Imanishi, *Front. Energy Res.*, 2020, **8**, 2–10.
- N. Tolganbek, Y. Yerkinbekova, S. Kalybekkyzy, Z. Bakenov and A. Mentbayeva, *J. Alloys Compd.*, 2021, **882**, 160774.
- S. Zugmann, M. Fleischmann, M. Amereller, R. M. Gschwind, H. D. Wiemhöfer and H. J. Gores, *Electrochim. Acta*, 2011, **56**, 3926–3933.
- N. Kamaya, K. Homma, Y. Yamakawa, M. Hirayama, R. Kanno, M. Yonemura, T. Kamiyama, Y. Kato, S. Hama, K. Kawamoto and A. Mitsui, *Nat. Mater.*, 2011, **10**, 682–686.
- K. Xu, *Chem. Rev.*, 2004, **104**, 4303–4417.
- J. Hassoun, R. Verrelli, P. Reale, S. Panero, G. Mariotto, S. Greenbaum and B. Scrosati, *J. Power Sources*, 2013, **229**, 117–122.
- J. B. Goodenough and Y. Kim, *Chem. Mater.*, 2010, **22**, 587–603.
- Y. C. Jung, S. K. Kim, M. S. Kim, J. H. Lee, M. S. Han, D. H. Kim, W. C. Shin, M. Ue and D. W. Kim, *J. Power Sources*, 2015, **293**, 675–683.
- M. Park, X. Zhang, M. Chung, G. B. Less and A. M. Sastry, *J. Power Sources*, 2010, **195**, 7904–7929.
- A. Patil, V. Patil, D. Wook Shin, J. W. Choi, D. S. Paik and S. J. Yoon, *Mater. Res. Bull.*, 2008, **43**, 1913–1942.
- E. P. Roth and C. J. Orendorff, *Electrochem. Soc. Interface*, 2012, **21**, 45–49.
- C. C. Yang and S. J. Lin, *J. Power Sources*, 2002, **112**, 497–503.
- W. Kam, C. W. Liew, J. Y. Lim and S. Ramesh, *Ionics*, 2014, **20**, 665–674.
- M. Sethupathy, V. Sethuraman and P. Manisankar, *Soft Nanosci. Lett.*, 2013, **03**, 37–43.



- 28 S. Kalybekkyzy, A. F. Kopzhassar, M. V. Kahraman, A. Mentbayeva and Z. Bakenov, *Polymers*, 2021, **23**, 1–12.
- 29 Y.-W. Hu, I. D. Raistrick and R. A. Huggins, *J. Electrochem. Soc.*, 1977, **124**, 1240–1242.
- 30 J. Kuwano and A. R. West, *MRS Bull.*, 1980, **15**, 1661–1667.
- 31 S. Boulineau, M. Courty, J. M. Tarascon and V. Viallet, *Solid State Ionics*, 2012, **221**, 1–5.
- 32 C. Yu, L. van Eijck, S. Ganapathy and M. Wagemaker, *Electrochim. Acta*, 2016, **215**, 93–99.
- 33 R. Murugan, S. Ramakumar and N. Janani, *Electrochem. Commun.*, 2011, **13**, 1373–1375.
- 34 S. Ohta, T. Kobayashi and T. Asaoka, *J. Power Sources*, 2011, **196**, 3342–3345.
- 35 R. Murugan, V. Thangadurai and W. Weppner, *Angew. Chem., Int. Ed.*, 2007, **46**, 7778–7781.
- 36 R. A. Huggins, *Electrochim. Acta*, 1977, **22**, 773–781.
- 37 B. A. Boukamp and R. A. Huggins, *Phys. Lett. A*, 1976, **58**, 231–233.
- 38 V. Thangadurai, A. K. Shukla and J. Gopalakrishnan, *Chem. Mater.*, 1999, **11**, 835–839.
- 39 C. H. Chen and K. Amine, *Solid State Ionics*, 2001, **144**, 51–57.
- 40 M. Itoh, Y. Inaguma, W. Jung, L. Chen and T. Nakamura, *Solid State Ionics*, 1994, **70–71**, 203–207.
- 41 X. Lü, J. W. Howard, A. Chen, J. Zhu, S. Li, G. Wu, P. Dowden, H. Xu, Y. Zhao and Q. Jia, *Adv. Sci.*, 2016, 1500359.
- 42 Y. Zhao and L. L. Daemen, *J. Am. Chem. Soc.*, 2012, **134**, 15042–15047.
- 43 P. Goharian, B. Eftekhari Yekta, A. R. Aghaei and S. Banijamali, *J. Non. Cryst. Solids*, 2015, **409**, 120–125.
- 44 A. Aatiq, M. Ménétrier, L. Croguennec, E. Suard and C. Delmas, *J. Mater. Chem.*, 2002, **12**, 2971–2978.
- 45 N. Tolganbek, Y. Yerkinbekova, A. Khairullin, Z. Bakenov, K. Kanamura and A. Mentbayeva, *Ceram. Int.*, 2021, **47**, 18188–18195.
- 46 N. Tolganbek, A. Mentbayeva, B. Uzakbaiuly, K. Kanamura and Z. Bakenov, *Mater. Today Proc.*, 2019, **25**, 97–100.
- 47 J. C. Bachman, S. Muy, A. Grimaud, H. H. Chang, N. Pour, S. F. Lux, O. Paschos, F. Maglia, S. Lupart, P. Lamp, L. Giordano and Y. Shao-Horn, *Chem. Rev.*, 2016, **116**, 140–162.
- 48 H. Aono, N. Imanaka and G. Ya Adachi, *Acc. Chem. Res.*, 1994, **27**, 265–270.
- 49 D. Petit, P. Colomban, G. Collin and J. P. Boilot, *Mater. Res. Bull.*, 1986, **21**, 365–371.
- 50 B. E. Taylor, A. D. English and T. Berzins, *Mater. Res. Bull.*, 1977, **12**, 171–181.
- 51 H. Aono, E. Sugimoto, Y. Sadaoka, N. Imanaka and G. Ya Adachi, *Solid State Ionics*, 1993, **62**, 309–316.
- 52 H. Aono, E. Sugimoto, Y. Sadaoka, N. Imanaka and G. Adachi, *Bull. Chem. Soc. Jpn.*, 1992, **65**, 2200–2204.
- 53 S. Chun Li, J. Yi Cai and Z. Xiang Lin, *Solid State Ionics*, 1988, **28–30**, 1265–1270.
- 54 M. Giarola, A. Sanson, F. Tietz, S. Pristat, E. Dashjav, D. Rettenwander, G. J. Redhammer and G. Mariotto, *J. Phys. Chem. C*, 2017, **121**, 3697–3706.
- 55 L.-O. Hagman, P. Kierkegaard, P. Karvonen, A. I. Virtanen and J. Paasivirta, *Acta Chem. Scand.*, 1968, **22**, 1822–1832.
- 56 J. B. Goodenough, H.-P. Hong and J. A. Kafalas, *Mater. Res. Bull.*, 1976, **11**, 203–220.
- 57 H. Y. P. Hong, *Mater. Res. Bull.*, 1976, **11**, 173–182.
- 58 A. Martínez-Juárez, C. Pecharromán, J. E. Iglesias and J. M. Rojo, *J. Phys. Chem. B*, 1998, **102**, 372–375.
- 59 M. A. Subramanian, R. Subramanian and A. Clearfield, *Solid State Ionics*, 1986, **18–19**, 562–569.
- 60 H. Aono, E. Sugimoto, Y. Sadaoka, N. Imanaka and G. Adachi, *J. Electrochem. Soc.*, 1989, **136**, 590–591.
- 61 T. Šalkus, A. Dindune, Z. Kanepe, J. Ronis, A. Určinskas, A. Kežionis and A. F. Orliukas, *Solid State Ionics*, 2007, **178**, 1282–1287.
- 62 M. Cretin and P. Fabry, *J. Eur. Ceram. Soc.*, 1999, **19**, 2931–2940.
- 63 C. Cao, Z. Bin Li, X. L. Wang, X. B. Zhao and W. Q. Han, *Front. Energy Res.*, 2014, **2**, 1–10.
- 64 C. J. Leo, G. V. Subba Rao and B. V. R. Chowdari, *J. Mater. Chem.*, 2002, **12**, 1848–1853.
- 65 H. Aono, E. Sugimoto, Y. Sadaoka, N. Imanaka and G. Ya Adachi, *Solid State Ionics*, 1991, **47**, 257–264.
- 66 O. G. Gromov, G. B. Kunshina, A. P. Kuz'min and V. T. Kalinnikov, *Russ. J. Appl. Chem.*, 1996, **69**, 385–388.
- 67 J. Fu, *J. Am. Ceram. Soc.*, 1997, **80**, 1901–1903.
- 68 J. Fu, *Solid State Ionics*, 1997, **104**, 191–194.
- 69 X. Xu, Z. Wen, X. Wu, X. Yang and Z. Gu, *J. Am. Ceram. Soc.*, 2007, **90**, 2802–2806.
- 70 M. Illbeigi, A. Fazlali, M. Kazazi and A. H. Mohammadi, *Solid State Ionics*, 2016, **289**, 180–187.
- 71 Y. Ren, K. Chen, R. Chen, T. Liu, Y. Zhang and C. W. Nan, *J. Am. Ceram. Soc.*, 2015, **98**, 3603–3623.
- 72 C. Delmas, A. Nadiri and J. L. Soubeyroux, *Solid State Ionics*, 1988, **28–30**, 419–423.
- 73 S. Stramare, V. Thangadurai and W. Weppner, *Chem. Mater.*, 2003, **15**, 3974–3990.
- 74 A. Jena, Y. Meesala, S. F. Hu, H. Chang and R. S. Liu, *ACS Energy Lett.*, 2018, **3**, 2775–2795.
- 75 P. Hartmann, T. Leichtweiss, M. R. Busche, M. Schneider, M. Reich, J. Sann, P. Adelhelm and J. Janek, *J. Phys. Chem. C*, 2013, **117**, 21064–21074.
- 76 Y. Kee, S. S. Lee and H. Yun, *Acta Crystallogr. Sect. E Struct. Reports Online*, 2011, **E67**, i49.
- 77 H. Chung and B. Kang, *Chem. Mater.*, 2017, **29**, 8611–8619.
- 78 Y. Liu, C. Li, B. Li, H. Song, Z. Cheng, M. Chen, P. He and H. Zhou, *Adv. Energy Mater.*, 2018, **8**, 1–7.
- 79 J. Zhu, J. Zhao, Y. Xiang, M. Lin, H. Wang, B. Zheng, H. He, Q. Wu, J. Y. Huang and Y. Yang, *Chem. Mater.*, 2020, **32**, 4998–5008.
- 80 J. Li and R. Wang, *Ceram. Int.*, 2021, **47**, 13280–13290.
- 81 A. Sakuda, A. Hayashi and M. Tatsumisago, *Curr. Opin. Electrochem.*, 2017, **6**, 108–114.
- 82 H. D. Lim, J. H. Park, H. J. Shin, J. Jeong, J. T. Kim, K. W. Nam, H. G. Jung and K. Y. Chung, *Energy Storage Mater.*, 2020, **25**, 224–250.
- 83 Y. Chen, K. Wen, T. Chen, X. Zhang, M. Armand and S. Chen, *Energy Storage Mater.*, 2020, **31**, 401–433.



- 84 X. Shen, Q. Zhang, T. Ning, T. Liu, Y. Luo, X. He, Z. Luo and A. Lu, *Mater. Today Chem.*, 2020, **18**, 100368.
- 85 L. Xu, S. Tang, Y. Cheng, K. Wang, J. Liang, C. Liu, Y. C. Cao, F. Wei and L. Mai, *Joule*, 2018, **2**, 1991–2015.
- 86 T. Krauskopf, F. H. Richter, W. G. Zeier and J. Janek, *Chem. Rev.*, 2020, **120**, 7745–7794.
- 87 X. B. Cheng, C. Z. Zhao, Y. X. Yao, H. Liu and Q. Zhang, *Chem*, 2019, **5**, 74–96.
- 88 N. W. Li, Y. X. Yin, C. P. Yang and Y. G. Guo, *Adv. Mater.*, 2016, **28**, 1853–1858.
- 89 Y. Liu, Q. Sun, Y. Zhao, B. Wang, P. Kaghazchi, K. R. Adair, R. Li, C. Zhang, J. Liu, L. Y. Kuo, Y. Hu, T. K. Sham, L. Zhang, R. Yang, S. Lu, X. Song and X. Sun, *ACS Appl. Mater. Interfaces*, 2018, **10**, 31240–31248.
- 90 L. Yang, Y. Song, H. Liu, Z. Wang, K. Yang, Q. Zhao, Y. Cui, J. Wen, W. Luo and F. Pan, *Small Methods*, 2020, **4**, 1–7.
- 91 Q. Cheng, A. Li, N. Li, S. Li, A. Zangiabadi, T. De Li, W. Huang, A. C. Li, T. Jin, Q. Song, W. Xu, N. Ni, H. Zhai, M. Dontigny, K. Zaghbi, X. Chuan, D. Su, K. Yan and Y. Yang, *Joule*, 2019, **3**, 1510–1522.
- 92 J. Liu, T. Liu, Y. Pu, M. Guan, Z. Tang, F. Ding, Z. Xu and Y. Li, *RSC Adv.*, 2017, **7**, 46545–46552.
- 93 H. Bai, J. Hu, Y. Duan, T. Kozawa, M. Naito, J. Zhang and S. Dong, *Ceram. Int.*, 2019, **45**, 14663–14668.
- 94 X. Hao, Q. Zhao, S. Su, S. Zhang, J. Ma, L. Shen, Q. Yu, L. Zhao, Y. Liu, F. Kang and Y. B. He, *Adv. Energy Mater.*, 2019, **9**, 1–8.
- 95 C. Guhl, M. Fingerle and R. Hausbrand, *J. Power Sources*, 2017, **362**, 299–307.
- 96 L. Li, Z. Zhang, L. Luo, R. You, J. Jiao, W. Huang, J. Wang, C. Li, X. Han and S. Chen, *Ionics*, 2020, **26**, 3815–3821.
- 97 F. J. Q. Cortes, J. A. Lewis, J. Tippens, T. S. Marchese and M. T. McDowell, *J. Electrochem. Soc.*, 2020, **167**, 050502.
- 98 S. Xiong, Y. Liu, P. Jankowski, Q. Liu, F. Nitze, K. Xie, J. Song and A. Matic, *Adv. Funct. Mater.*, 2020, **30**, 2001444.
- 99 Y. Hu, Y. Zhong, L. Qi and H. Wang, *Nano Res.*, 2020, **13**, 3230–3234.
- 100 Y. Koizumi, D. Mori, S. Taminato, O. Yamamoto, Y. Takeda and N. Imanishi, *Solid State Ionics*, 2019, **337**, 101–106.
- 101 Y. Wang, G. Wang, P. He, J. Hu, J. Jiang and L. Z. Fan, *Chem. Eng. J.*, 2020, **393**, 124705.
- 102 H. V. Venkatesetty, *Proc. Annu. Batter. Conf. Appl. Adv.*, 2000, 109–114.
- 103 Y. Kumar, S. A. Hashmi and G. P. Pandey, *Solid State Ionics*, 2011, **201**, 73–80.
- 104 B. Liang, S. Tang, Q. Jiang, C. Chen, X. Chen, S. Li and X. Yan, *Electrochim. Acta*, 2015, **169**, 334–341.
- 105 M. Armand, *Solid State Ionics*, 1994, **69**, 309–319.
- 106 G. S. MacGlashan and Y. G. Andreev, *Nature*, 1999, **398**, 792–794.
- 107 W. Zhou, S. Wang, Y. Li, S. Xin, A. Manthiram and J. B. Goodenough, *J. Am. Chem. Soc.*, 2016, **138**, 9385–9388.
- 108 S. Ramesh, T. S. Yin and C. W. Liew, *Ionics*, 2011, **17**, 705–713.
- 109 Z. Cai, R. Xiao and B. Jiang, *Surf. Coatings Technol.*, 2021, **421**, 127389.
- 110 Y. Jin, C. Liu, X. Zong, D. Li, M. Fu, S. Tan, Y. Xiong and J. Wei, *J. Power Sources*, 2020, **460**, 228125.
- 111 S. Yu, S. Schmohl, Z. Liu, M. Hoffmeyer, N. Schön, F. Hausen, H. Tempel, H. Kungl, H. D. Wiemhöfer and R. A. Eichel, *J. Mater. Chem. A*, 2019, **7**, 3882–3894.
- 112 Z. Y. Kou, Y. Lu, C. Miao, J. Q. Li, C. J. Liu and W. Xiao, *Rare Met.*, 2021, **40**, 3175–3184.
- 113 L. He, Q. Sun, C. Chen, J. A. S. Oh, J. Sun, M. Li, W. Tu, H. Zhou, K. Zeng and L. Lu, *ACS Appl. Mater. Interfaces*, 2019, **11**, 20895–20904.
- 114 Z. Chen, G. T. Kim, J. K. Kim, M. Zarrabeitia, M. Kuenzel, H. P. Liang, D. Geiger, U. Kaiser and S. Passerini, *Adv. Energy Mater.*, 2021, **11**, 2101339.
- 115 X. Yu and A. Manthiram, *Adv. Funct. Mater.*, 2019, **29**, 1–10.
- 116 M. Dirican, C. Yan, P. Zhu and X. Zhang, *Mater. Sci. Eng., R*, 2019, **136**, 27–46.
- 117 M. Dirican, C. Yan, P. Zhu and X. Zhang, *Mater. Sci. Eng., R*, 2019, **136**, 27–46.
- 118 X. Shi, N. Ma, Y. Wu, Y. Lu, Q. Xiao, Z. Li and G. Lei, *Solid State Ionics*, 2018, **325**, 112–119.
- 119 X. Liang, D. Han, Y. Wang, L. Lan and J. Mao, *RSC Adv.*, 2018, **8**, 40498–40504.
- 120 Y. Li and H. Wang, *Ind. Eng. Chem. Res.*, 2021, **60**, 1494–1500.
- 121 A. Das, M. Goswami, K. Illath, T. G. Ajithkumar, A. Arya and M. Krishnan, *J. Non. Cryst. Solids*, 2021, **558**, 120654.
- 122 S. Yi, T. Xu, L. Li, M. Gao, K. Du, H. Zhao and Y. Bai, *Solid State Ionics*, 2020, **355**, 115419.
- 123 M. D. Singh, A. Dalvi, D. M. Phase and Y. Kumar, *J. Mater. Sci.*, 2020, **55**, 3951–3963.

