


Cite this: *Chem. Sci.*, 2020, 11, 3223

All publication charges for this article have been paid for by the Royal Society of Chemistry

## Selective glucose sensing in complex media using a biomimetic receptor†

Robert A. Tromans,<sup>a</sup> Soumen K. Samanta,<sup>a</sup> Andy M. Chapman<sup>b</sup> and Anthony P. Davis<sup>†</sup>  <sup>\*,a</sup>

Glucose is a key biomedical analyte, especially relevant to the management of diabetes. Current methods for glucose determination rely on the enzyme glucose oxidase, requiring specialist instrumentation and suffering from redox-active interferents. In a new approach, a powerful and highly selective achiral glucose receptor is mixed with a sample, L-glucose is added, and the induced CD spectrum is measured. The CD signal results from competition between the enantiomers, and is used to determine the D-glucose content. The involvement of L-glucose doubles the signal range from the CD spectrometer and allows sensitivity to be adjusted over a wide dynamic range. It also negates medium effects, which must be equal for both enantiomers. The method has been demonstrated with human serum, pre-filtered to remove proteins, giving results which closely match the standard biochemical procedures, as well as a cell culture medium and a beer sample containing high (70 mM) and low (0.4 mM) glucose concentrations respectively.

Received 25th October 2019  
Accepted 23rd February 2020

DOI: 10.1039/c9sc05406e

rsc.li/chemical-science

### Introduction

The determination of glucose concentrations is one of the most important analytical problems in chemistry.<sup>1</sup> More than 400 million people around the world are affected by diabetes. Around 10% are Type 1, who depend on injected insulin and must determine their blood glucose levels several times each day. Type 2 diabetics (the remaining 90%) also require regular blood glucose analyses. There is need both for portable, routine measurement methods and for accurate laboratory-based techniques. Current methodology is based, almost exclusively, on measuring the rate of glucose oxidation catalysed by the enzyme glucose oxidase.<sup>1d,e</sup> Although very well-developed, it suffers from interference by redox-active species (*e.g.* ascorbic acid and paracetamol<sup>2</sup>), requires specialist equipment and tends to lose accuracy at low glucose concentrations. Alternatives based on glucose receptors have been intensively studied,<sup>1a</sup> and are beginning to make headway. For example, carbohydrate recognition by boronic acids is well-known,<sup>3</sup> and has been exploited in an FDA-approved implantable glucose monitor.<sup>4</sup> However, designing boron-based receptors showing high selectivity for specific substrates remains challenging. Receptors employing non-covalent interactions have been reported by ourselves<sup>5</sup> and others,<sup>6</sup> but have tended to show low affinities and interference from non-carbohydrate substrates. The lectin

concanavalin A has also been exploited,<sup>7</sup> but even this natural receptor shows low selectivity for glucose.<sup>8</sup>

We recently described a glucose receptor **1** (Fig. 1a) with remarkable properties.<sup>9</sup> The design is based on the previously-studied “temple” architecture,<sup>5</sup> but features *C*<sub>3</sub> symmetry and bis-urea “pillars”, preorganised for binding to vicinal OR groups. The affinity of **1** for glucose in water, at 18 000 M<sup>-1</sup>, is ~100 times higher than any previous designs, and compares well with natural systems. Selectivity for glucose is outstanding. Of all carbohydrates tested, only a few with all-equatorial substitution patterns showed significant binding. Glucose : galactose selectivity, for example, was 130 : 1, while selectivity for glucose *vs.* fructose (often a good substrate for boron-based receptors<sup>1a</sup>) was 360 : 1. Binding to a range of other relevant small molecules (*e.g.* amino acids, nucleobases, paracetamol, ascorbic acid<sup>10</sup>) was undetectable. Affinities were unaffected by changes in pH, and only slightly lowered in biological media. Given this performance, receptor **1** has clear potential for application in glucose analysis, provided read-out methodology can be developed. Here we show how **1** can be exploited directly in laboratory-based (as opposed to portable) procedures for glucose determination in complex real-world samples. The methodology requires standard, non-specialist equipment and features adjustable sensitivity, allowing measurements over a wide range of glucose concentrations.

### Results and discussion

The application of **1** to practical glucose sensing required the resolution of two issues. First, we needed a straightforward means of detecting binding, compatible with complex

<sup>a</sup>School of Chemistry, University of Bristol, Cantock's Close, Bristol BS8 1TS, UK. E-mail: Anthony.Davis@bristol.ac.uk

<sup>b</sup>Carbometrics Ltd., Unit DX, St Philips Central, Albert Road, Bristol BS2 0XJ, UK

† Electronic supplementary information (ESI) available: Experimental details, theoretical background, CD spectra and titration analysis curves. See DOI: 10.1039/c9sc05406e





Fig. 1 (a) Biomimetic glucose receptor **1**, with D- and L-glucose substrates. (b) Model of **1** binding D-glucose **D2** (shown as pale green). The bis-ureido-benzenecarboxamido chromophores adopt twisted orientations in the complex. Polycarboxylate side chains are omitted for clarity. For details of modelling see ref. 9.

biological media. Second, we had to control sensitivity to allow measurements at relevant concentrations. Here, the high affinities shown by **1** worked against us. Normal blood glucose concentrations are  $\sim 6$  mM, while the range of interest for diabetics is from 2 mM (dangerously low) to  $\geq 12$  mM (dangerously high). For other applications concentrations may be still higher (for example, up to 1 M for fermentation broths<sup>11</sup>). Receptor **1** is 97% saturated at  $[\text{glucose}] = 2$  mM,<sup>12</sup> so is almost unaffected by concentration changes above this level.

To solve both problems, we turned to circular dichroism (CD). This technique is especially suitable for monitoring carbohydrate recognition because saccharide substrates are chiral but do not contain chromophores. Their influence on receptors, which are usually achiral and light-absorbing, is thus easy to detect.<sup>13</sup> Receptor **1** contains bis-ureido-benzenecarboxamido units (coloured red in Fig. 1a) which absorb light with  $\lambda_{\text{max}} \sim 260$  nm. As shown in Fig. 1b, binding to glucose was expected to cause twisting of these chromophores, leading to strong CD signals.

A further advantage of CD detection, not previously exploited, is that the response can be tuned, and the signal range expanded, by adding the antipode of the substrate. For example, in the case of **1**, L-glucose **L2** will compete for the binding site with D-glucose **D2** on equal terms. Addition of excess L-glucose will generate the CD spectrum of the complex **1**·**L2**. Increasing amounts of D-glucose will then reduce the intensity of the spectrum, nullify exactly at  $[\text{D2}] = [\text{L2}]$ , then generate spectra of opposite sign. Because the signal passes from negative to positive, the spread of values is double that given by simple **D2** addition. If the receptor is saturated throughout, a good assumption in the present case, it is readily shown that the CD signal  $\theta$  is given by eqn (1):<sup>14</sup>

$$\theta = k([\mathbf{1} \cdot \mathbf{D2}] - [\mathbf{1} \cdot \mathbf{L2}]) = k[\mathbf{1}]_t \frac{([\mathbf{D2}]_t - [\mathbf{L2}]_t)}{([\mathbf{D2}]_t + [\mathbf{L2}]_t)} \quad (1)$$

Here  $k$  is a constant dependent on wavelength, path length, instrument *etc.*, and  $[\mathbf{1}]_t$ ,  $[\mathbf{D2}]_t$ , and  $[\mathbf{L2}]_t$  are total

concentrations of receptor, D-glucose and L-glucose in bound and unbound forms. Note that the affinity of **1** for **D2/L2** does not appear in the equation. Provided the receptor is saturated the binding constant is irrelevant, so that minor changes due to medium *etc.* are unimportant. Predicted CD output curves for four widely varying  $[\mathbf{L2}]_t$  (2, 8, 50 and 400 mM) are shown in Fig. 2. In all cases the slopes are highest for low  $[\text{D-glucose}]$ , but the curves for higher  $[\mathbf{L2}]_t$  are clearly more suitable for determinations in the higher concentration ranges (and *vice versa*). Indeed, it can be shown that for a given  $[\mathbf{D2}]_t$ , the slope  $\partial\theta/\partial[\mathbf{D2}]_t$



Fig. 2 Predicted CD signals  $\theta$  from addition of (chiral) **D2** to achiral, light-absorbing **1** in the presence of **L2** at varying concentrations. Curves are derived from eqn (1), with constant  $k$  set arbitrarily to 20. (a) Glucose concentrations relevant to blood samples. (b) Higher concentrations relevant to fermentation samples.



passes through a maximum at  $[D2]_t = [L2]_t$  (see ESI†). This provides a simple rule for optimising sensitivity; for maximum response around a certain D-glucose concentration, a similar concentration of L-glucose should be added such that measured  $\theta$  is close to zero. Fig. 2 highlights the wide dynamic range of the method. In principle, measurements can be made at any concentration in the low millimolar range and above.

To establish the practicality of this approach, we first needed to show that addition of glucose to **1** produced a substantial CD signal. **D2** was titrated into a solution of **1** (0.25 mM) in aqueous phosphate buffer<sup>15</sup> to give the series of CD spectra shown in Fig. 3a. The changes were monitored at 260 nm and analysed to give a binding constant  $K_a$  of  $17\,200\text{ M}^{-1}$ , consistent with other methods<sup>9</sup> (Fig. 3b). As expected, addition of **L2** to **1** produced a similar but opposite CD response (Fig. S2†), while titration of **D2** into **1**·**L2** caused attenuation of the CD spectrum, with reduction to baseline when  $[D2]_t = [L2]_t$ , followed by inversion of the spectrum at higher  $[D2]$  (Fig. S3†).

We next considered applying the method to real-world biological samples. As mentioned earlier, we had previously tested receptor **1** against a variety of potential substrates and observed remarkable selectivity for glucose. Interferences from other small molecules were therefore not expected. The affinity of **1** for glucose had been found to be somewhat affected by the medium – for example, in cell culture media containing divalent metal ions,  $K_a$  was reduced to  $\sim 5300\text{ M}^{-1}$ . However, as the method involves competition between D and L-glucose such effects need not be important. Even at these lower affinities the receptor should be nearly saturated at relevant glucose

concentrations, and deviations from eqn (1) should be small. A further potential issue was background CD absorption from samples of practical interest. Indeed, CD spectra of human serum contained strong signals with sharply irregular structures, presumably due to the high protein content (Fig. S4†). However, filtration through 10 000 molecular weight cut-off (MWCO) membranes, a quick and easy process, gave solutions with negligible CD absorption (see Fig. 4). Addition of receptor **1** to these filtered samples gave the CD spectra expected for **1**·**D2**, formed from **1** + serum D-glucose. Treatment of serum with glucose oxidase and catalase (to remove glucose), filtration and addition of **1** resulted in a minimal CD signal (Fig. 4). Titration of D-glucose into this solution<sup>15</sup> then gave spectra, similar to those in Fig. 3a, which were analysed to give  $K_a = 10\,300\text{ M}^{-1}$ , consistent with earlier ITC measurements performed in similar media (Fig. S6†).

With these results in hand, we were positioned to develop methods to measure D-glucose levels in serum. To aid sample manipulation and ensure consistency, the serum was routinely diluted by 50% with 20 mM phosphate buffer (pH 7.4) containing **1** and L-glucose as necessary.<sup>15</sup> Measured D-glucose levels were then doubled to give the values in the original sample.

In a first experiment, receptor **1** was added to filtered diluted serum, still containing the endogenous D-glucose, and the CD spectrum was monitored while serum containing L-glucose was titrated into the solution.<sup>15</sup> The CD signal was found to pass through zero for  $[L2]$  in the range 2.85–2.95 mM, equivalent to 5.7–5.9 mM in the serum (Fig. S7†). For comparison, the serum D-glucose concentration was also measured using an enzyme-based YSI analyser, and found to be  $5.8\text{ mM} \pm 0.1\text{ mM}$ . The YSI instrument is the standard equipment for laboratory glucose analysis and commonly used as a reference in studies of blood glucose monitors.<sup>16</sup>

To establish a more convenient procedure, we performed calibration experiments as follows. Glucose-free serum was prepared by the glucose oxidase/catalase method described above. L-Glucose (2 mM or 8 mM) and receptor **1** (0.25 mM) were added, with dilution, to give a titrand. A titrant containing the same concentrations of **L2** and **1**, with the addition of D-glucose



Fig. 3 (a) CD spectra from the titration of D-glucose into **1** (0.25 mM) in aqueous phosphate buffer (10 mM, pH = 7.4). Cell path length = 0.1 cm, 16 scans accumulated at each concentration. (b) Curve-fitting analysis of the CD signal at 260 nm, assuming a 1 : 1 binding model.  $K_a = 17\,200\text{ M}^{-1}$ .

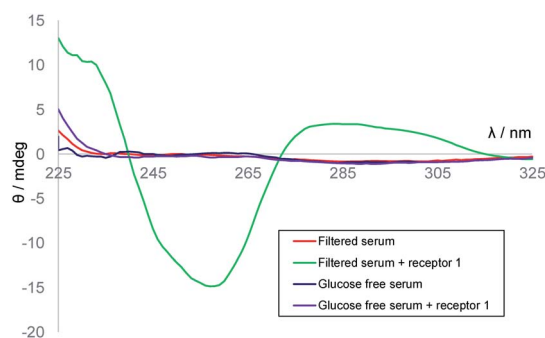


Fig. 4 CD spectra of: 10 000 MWCO-filtered human serum (red); filtered serum + receptor **1** (0.25 mM) (green); filtered serum treated with glucose oxidase (glucose-free serum, orange); filtered serum treated with glucose oxidase + receptor **1** (0.25 mM) (purple).



(40 mM), was prepared and added to the titrand. CD spectra were acquired, corresponding to  $[D2]$  up to  $\sim 10$  mM at constant concentrations of **1** and **L2**. The spectra obtained for  $[L2] = 2$  mM are shown in Fig. 5a. This set of data provides an empirical calibration curve allowing measurement of  $[D2]$  from single CD spectra using the given spectrometer and settings,  $[L2]$  and **1**.

More usefully, it was found that the variations in CD absorption at 260 nm ( $\theta_{260}$ ) gave an excellent fit to eqn (1) if  $k$  was allowed to vary (Fig. 5b). This confirmed the validity of eqn (1),<sup>17</sup> while also providing an accurate value of  $k$ . Once  $k$  has been determined, it is thus possible to obtain  $[D2]$  from a single measurement of  $\theta_{260}$  simply by applying eqn (2), obtained by rearrangement of eqn (1) (see ESI†).

$$[D2]_t = \frac{[L2]_t(k[1]_t + \theta)}{(k[1]_t - \theta)} \quad (2)$$

The optimised protocol thus involves (a) centrifugal filtration of the sample through a 10k MWCO membrane, (b) dilution by 50% with a standard solution of **1** and **L2** in phosphate buffer, adjusted to give the concentrations used for the calibration experiment, (c) measurement of the CD signal at 260 nm, and (d) application of eqn (2), doubling the initial answer to account for the dilution. The procedure was applied to the filtered serum in six independent experiments, three

employing  $[L2] = 2$  mM and three with  $[L2] = 8$  mM. Results varied from 5.58 to 5.87 mM, with an average of 5.75. Further experiments would be needed to optimise the procedure and define the accuracy more precisely, but these initial results suggest a similar performance to the industry-standard YSI analyser.

To demonstrate the versatility of the method we performed analyses in two further media. Firstly we employed a cell culture medium, which would typically contain quite high glucose concentrations requiring correspondingly high  $[L2]$ .<sup>11</sup> The medium was obtained glucose-free, receptor **1** was added, and a calibration curve was measured in the presence of *L*-glucose (50 mM) as described above for the glucose-free serum. Addition of *D*-glucose caused the expected changes to the CD spectrum, which again fitted well to eqn (1) (Fig. S10†). A sample for analysis was then prepared by adding *D*-glucose (70 mM) to the cell culture medium and subjected to the standard protocol with  $[L2] = 50$  mM (see ESI†). The results were within 2% of the expected value (Table S5†). Secondly, to illustrate the application to samples with lower  $[D2]$ , we employed beer with an artificially reduced glucose concentration.<sup>18</sup> As described in the ESI,† the *D*-glucose was first removed enzymatically from the beer, and a calibration curve was measured in the presence of 0.2 mM *L*-glucose. In this case eqn (1) did not apply, as expected for such a low  $[L2]$ , but the data could be fitted to an empirical equation in Excel (Fig. S11†). The sample for analysis was generated by addition of *D*-glucose (0.4 mM) to the glucose-free beer, and subjected to the standard protocol with  $[L2] = 0.2$  mM. *D*-Glucose concentrations could be obtained by solving the empirical equation. Again, the results were within 2% of those expected (Table S6†).

## Conclusions

In conclusion, we have shown that hexaurea receptor **1** can be applied to the accurate analysis of *D*-glucose concentrations in complex biological mixtures. The extreme selectivity observed for **1** implies that interferences will be negligible. Unusually, the sensitivity is adjustable so that samples of widely different concentrations can be handled with ease. In terms of equipment, the procedure requires only a centrifuge and a CD spectrometer, multi-purpose instruments that are available in many (bio)chemical laboratories. The technique could thus complement the standard methods based on glucose oxidase, for cases where redox-active species can cause interference and/or specialist instrumentation may not be available.

## Conflicts of interest

There are no conflicts to declare.

## Acknowledgements

This research was supported by Carbometrics, and by the Engineering and Physical Sciences Research Council through a studentship funded by the Bristol Chemical Synthesis Doctoral Training Centre (EP/G036764/1) to R. A. T.

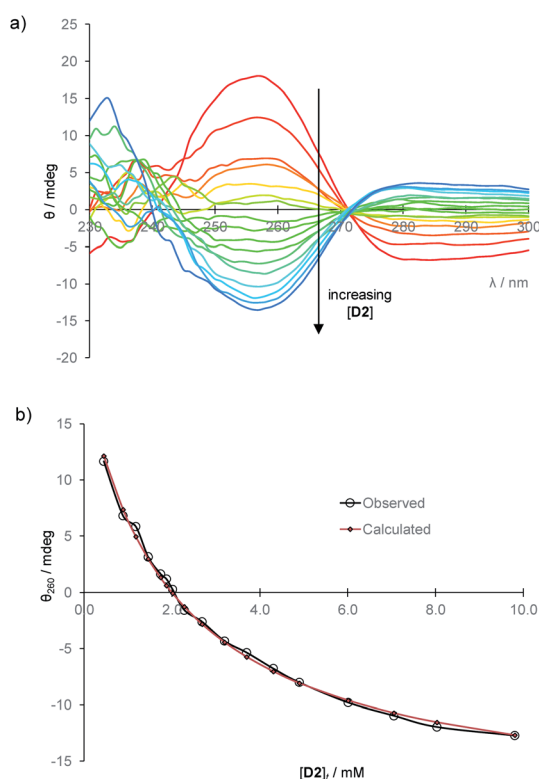


Fig. 5 (a) CD spectra from the titration of *D*-glucose into filtered, diluted, glucose-free human serum, in the presence of *L*-glucose (2 mM) and **1** (0.25 mM). (b) Curve-fitting of the CD signal at 260 nm to eqn (1) with variation of constant  $k$ . The best fit (red diamonds) was obtained for  $k = -76\,800$  mdeg  $M^{-1}$ .



## Notes and references

- (a) X. L. Sun and T. D. James, *Chem. Rev.*, 2015, **115**, 8001–8037; (b) R. Gifford, *ChemPhysChem*, 2013, **14**, 2032–2044; (c) M. S. Steiner, A. Duerkop and O. S. Wolfbeis, *Chem. Soc. Rev.*, 2011, **40**, 4805–4839; (d) A. Heller and B. Feldman, *Acc. Chem. Res.*, 2010, **43**, 963–973; (e) J. Wang, *Chem. Rev.*, 2008, **108**, 814–825.
- Paracetamol and ascorbic acid are known to interfere with the standard enzyme-based methodology. See, for example: G. Palleschi, M. A. N. Rahni, G. J. Lubrano, J. N. Ngwainbi and G. G. Guilbault, *Anal. Biochem.*, 1986, **159**, 114–121; A. Basu, M. Q. Slama, W. T. Nicholson, L. Langman, T. Peyser, R. Carter and R. Basu, *J. Diabetes Sci. Technol.*, 2017, **11**, 936–941.
- S. Jin, Y. F. Cheng, S. Reid, M. Y. Li and B. H. Wang, *Med. Res. Rev.*, 2010, **30**, 171–257; T. D. James, M. D. Phillips and S. Shinkai, *Boronic Acids in Saccharide Recognition*, RSC, Cambridge, 2006.
- The Eversense glucose monitor, produced by Senseonics Inc. See <https://global.eversenseddiabetes.com/>.
- For example: P. Rios, T. J. Mooibroek, T. S. Carter, C. Williams, M. R. Wilson, M. P. Crump and A. P. Davis, *Chem. Sci.*, 2017, **8**, 4056–4061; P. Rios, T. S. Carter, T. J. Mooibroek, M. P. Crump, M. Lisbjerg, M. Pittelkow, N. T. Supekar, G.-J. Boons and A. P. Davis, *Angew. Chem., Int. Ed.*, 2016, **55**, 3387–3392; T. J. Mooibroek, J. M. Casas-Solvas, R. L. Harniman, C. M. Renney, T. S. Carter, M. P. Crump and A. P. Davis, *Nat. Chem.*, 2016, **8**, 69–74; T. S. Carter, T. J. Mooibroek, P. F. N. Stewart, M. P. Crump, M. C. Galan and A. P. Davis, *Angew. Chem., Int. Ed.*, 2016, **55**, 9311–9315; C. Ke, H. Destecroix, M. P. Crump and A. P. Davis, *Nat. Chem.*, 2012, **4**, 718–723; A. P. Davis, *Org. Biomol. Chem.*, 2009, **7**, 3629–3638.
- Reviews: O. Francesconi and S. Roelens, *ChemBioChem*, 2019, **20**, 1329–1346; C. E. Miron and A. Petitjean, *ChemBioChem*, 2015, **16**, 365–379; D. Solis, N. V. Bovin, A. P. Davis, J. Jiménez-Barbero, A. Romero, R. Roy, K. Smetana and H. J. Gabius, *Biochim. Biophys. Acta, Gen. Subj.*, 2015, **1850**, 186–235; J. Arnaud, A. Audfray and A. Imbert, *Chem. Soc. Rev.*, 2013, **42**, 4798–4813; M. Mazik, *RSC Adv.*, 2012, **2**, 2630–2642; Y. Nakagawa and Y. Ito, *Trends Glycosci. Glycotechnol.*, 2012, **24**, 1–12; A. P. Davis and R. S. Wareham, *Angew. Chem., Int. Ed.*, 1999, **38**, 2978–2996.
- For example: S. Mansouri and J. S. Schultz, *Nat. Biotechnol.*, 1984, **2**, 885–890; R. J. Russell, M. V. Pishko, C. C. Gefrides, M. J. McShane and G. L. Cote, *Anal. Chem.*, 1999, **71**, 3126–3132; B. M. Cummins, J. T. Garza and G. L. Cote, *Anal. Chem.*, 2013, **85**, 5397–5404.
- E. J. Toone, *Curr. Opin. Struct. Biol.*, 1994, **4**, 719–728.
- R. A. Tromans, T. S. Carter, L. Chabanne, M. P. Crump, H. Li, J. V. Matlock, M. G. Orchard and A. P. Davis, *Nat. Chem.*, 2019, **11**, 52–56.
- Paracetamol and ascorbic acid are known to interfere with the standard enzyme-based methodology. See, for example: G. Palleschi, M. A. N. Rahni, G. J. Lubrano, J. N. Ngwainbi and G. G. Guilbault, *Anal. Biochem.*, 1986, **159**, 114–121; A. Basu, M. Q. Slama, W. T. Nicholson, L. Langman, T. Peyser, R. Carter and R. Basu, *J. Diabetes Sci. Technol.*, 2017, **11**, 936–941.
- Y.-H. Chang, K.-S. Chang, C.-Y. Chen, C.-L. Hsu, T.-C. Chang and H.-D. Jang, *Fermentation*, 2018, **4**, 45.
- This generalisation presumes a low concentration of receptor so that the glucose is in large excess. In practice it is true for  $[1] \leq 0.25$  mM.
- Selected examples: S. Saha, B. Kauffmann, Y. Ferrand and I. Huc, *Angew. Chem., Int. Ed.*, 2018, **57**, 13542–13546; T. Wu, J. Prusa, J. Kessler, M. Dracinsky, J. Valenta and P. Bour, *Anal. Chem.*, 2016, **88**, 8878–8885; Y. Ohishi, H. Abe and M. Inouye, *Chem.-Eur. J.*, 2015, **21**, 16504–16511; A. Schmitt, O. Perraud, E. Payet, B. Chatelet, B. Bousquet, M. Valls, D. Padula, L. Di Bari, J. P. Dutasta and A. Martinez, *Org. Biomol. Chem.*, 2014, **12**, 4211–4217; G. Fukuhara and Y. Inoue, *J. Am. Chem. Soc.*, 2011, **133**, 768–770; W. Cai, G. T. Wang, P. Du, R. X. Wang, X. K. Jiang and Z. T. Li, *J. Am. Chem. Soc.*, 2008, **130**, 13450–13459; H. Goto, Y. Furusho and E. Yashima, *J. Am. Chem. Soc.*, 2007, **129**, 9168–9174; M. Inouye, M. Waki and H. Abe, *J. Am. Chem. Soc.*, 2004, **126**, 2022–2027; Y. Kikuchi, K. Kobayashi and Y. Aoyama, *J. Am. Chem. Soc.*, 1992, **114**, 1351–1358; K. Tsukagoshi and S. Shinkai, *J. Org. Chem.*, 1991, **56**, 4089–4091.
- For a derivation, see Supporting Information.†
- Titration and titrand solutions were prepared such that they were identical except for the glucose added to the titrant. Thus, aside from [D2] or [L2], no other concentrations changed during the titrations.
- For example, see: T. Bailey, L. J. Klaff, J. F. Wallace, C. Greene, S. Pardo, B. Harrison and D. A. Simmons, *Diabetes*, 2015, **64**, A239.
- Note that deviations from eqn (1) are expected if receptor saturation is compromised, either by low glucose concentrations or by medium effects lowering affinities. In such cases the method can still be used but an empirical calibration curve should be employed.
- Preliminary measurements on the beer (Peroni gluten-free) suggested that the original D-glucose concentration was ~4 mM, too high for our purpose.

