



Cite this: *RSC Adv.*, 2018, 8, 7494

Sulfonated graphene oxide/Nafion composite membranes for high temperature and low humidity proton exchange membrane fuel cells†

Mohanraj Vinothkannan,^a Ae Rhan Kim,^{*b} G. Gnana kumar ^c and Dong Jin Yoo ^{*ad}

Iron oxide (Fe₃O₄) nanoparticles anchored over sulfonated graphene oxide (SGO) and Nafion/Fe₃O₄-SGO composites were fabricated and applied as potential proton exchange membranes in proton exchange membrane fuel cells (PEMFCs) operated at high temperature and low humidity. Fe₃O₄ nanoparticles bridge SGO and Nafion through electrostatic interaction/hydrogen bonding and increased the intrinsic thermal and mechanical stabilities of Nafion/Fe₃O₄-SGO composite membranes. Nafion/Fe₃O₄-SGO composite membranes increased the compactness of ionic domains and enhanced the water absorption and proton conductivity while restricting hydrogen permeability across the membranes. The proton conductivity of Nafion/Fe₃O₄-SGO (3 wt%) composite membrane at 120 °C under 20% relative humidity (RH) was 11.62 mS cm⁻¹, which is 4.74 fold higher than that of a pristine recast Nafion membrane. PEMFC containing the Nafion/Fe₃O₄-SGO composite membrane delivered a peak power density of 258.82 mW cm⁻² at a load current density of 640.73 mA cm⁻² while operating at 120 °C under 25% RH and ambient pressure. In contrast, under identical operating conditions, a peak power density of only 144.89 mW cm⁻² was achieved with the pristine recast Nafion membrane at a load current density of 431.36 mA cm⁻². Thus, Nafion/Fe₃O₄-SGO composite membranes can be used to address various critical problems associated with commercial Nafion membranes in PEMFC applications.

Received 25th November 2017
 Accepted 10th February 2018

DOI: 10.1039/c7ra12768e

rsc.li/rsc-advances

1. Introduction

Proton exchange membrane fuel cells (PEMFCs) operating at high temperature and low humidity are considered as advanced electrochemical energy conversion systems owing to their advantages of fast electrode reaction kinetics, limited requirement for a precious metal (Pt) catalyst, improved electrocatalytic CO tolerance and simplified water and thermal management.¹⁻⁴ One method to realize the practical application of such PEMFCs is to employ a proton exchange membrane (PEM) that is able to operate under high temperature and low humidity conditions. Until now, perfluorosulfonic acid (PFSA) membranes such as Nafion are considered state-of-the-art PEMs, which have long term durability, high electronic insulation, high proton

conductivity and unique hydrophilic percolation;⁵⁻⁸ unfortunately, the water uptake and consequently the proton conductivity of a Nafion membrane decrease by orders of magnitude during PEMFC operation at high temperature (>80 °C) and low humidity (<50%), owing to its inability to retain water in ionic clusters.^{1,9} Besides, Nafion membrane exhibits high hydrogen permeability denoted to as high hydrogen crossover from the anode to cathode through PEM as a result of concentration gradient.^{10,11} Accordingly, researchers are developing modified PFSA membranes or designing alternative PEMs. Incorporation of inorganic fillers, such as SiO₂, ZrO₂, CeO₂, ZnO₂, TiO₂ and zeolite nanoparticles and ZrO₂, CeO₂ and TiO₂ nanotubes, into the Nafion matrix has been demonstrated to result in composite PEMs with promising water uptake and consequently proton conductivity at high temperature and low humidity.^{4,12-16} Although the addition of inorganic fillers into Nafion matrix led to reorganized ion conducting channels (consisting of pendent sulfonic acid groups and embedded hydrophilic inorganic fillers), inorganic fillers without any sulfonic acid group often reduces the proton conductivity at hydrated condition, owing to a decrease in net volume of sulfonic acid contents in composite PEMs.¹⁷

Carbon nanomaterials with sulfonic acid groups have drawn attention in fabrication of composites with Nafion as they can increase the proton conductivity by increasing number of sulfonate groups per cluster volume of each domain and extend

^aGraduate School, Department of Energy Storage/Conversion Engineering, Hydrogen and Fuel Cell Research Center, Chonbuk National University, Jeollabuk-do 54896, Republic of Korea

^bDepartment of Bioenvironmental Chemistry, R&D Center for CANUTECH, Business Incubation Center, Chonbuk National University, Jeollabuk-do 54896, Republic of Korea. E-mail: canutech@hanmail.net

^cDepartment of Physical Chemistry, School of Chemistry, Madurai Kamaraj University, Madurai 625021, Tamil Nadu, India

^dDepartment of Life Science, Chonbuk National University, Jeollabuk-do 54896, Republic of Korea. E-mail: djyoo@jbnu.ac.kr

† Electronic supplementary information (ESI) available. See DOI: 10.1039/c7ra12768e



the mechanical strength by reorganizing aliphatic backbone chains. Rambabu *et al.*¹⁸ embedded sulfonic acid functionalized fullerene (FF) into a Nafion matrix to prepare a composite membrane. They reported that at 1 wt% FF loading, composite membrane shows an increase in tensile strength by 1.13 fold and in proton conductivity by 1.24 fold with respect to pristine Nafion membrane. Liu *et al.*¹⁹ incorporated multiwalled carbon nanotubes (MWCNTs) that were functionalized with Nafion into a Nafion matrix to prepare a composite membrane. In this work, the mechanical strength and proton conductivity of composite membrane were found to be increased up to a reasonable margin upon incorporating 0.05 wt% Nafion–MWCNTs. These results were attributed to high compatibility between Nafion–MWCNTs and Nafion matrix because Nafion chains on the surface of MWCNTs connect with hydrophilic domains of Nafion matrix and facilitate the dispersion.

Graphene is a single atom thick two-dimensional layer of sp^2 -hybridized carbon discovered by Geim *et al.*,²⁰ and is associated with exceptional extended surface, unique π -bond delocalized hexagonal structure, excellent thermomechanical stability and high young's modulus that are beneficial to its wide use in the fields of sensors,²¹ catalysis,²² adsorption,²³ nanoelectronics²⁴ and energy conversion and storage.^{25–27} For the integration of graphene into PEM, it is essential to functionalize/oxidize sp^2 -hybridized carbon networks to convert the material as a protonic conductor and electronic insulator.²⁸ The oxygen-related functional groups (*e.g.* –OH, –O– and –CO₂H) over GO were reported to exhibit a conductivity of $\sim 0.001 \text{ S cm}^{-1}$ at 300 K.²⁹ However, substituting –OH, –O– and –CO₂H groups of GO with sulfonic acid containing organic moiety enhances the proton conductivity by many fold owing to a prompt proton conducting behavior of sulfonic acid group. Furthermore, the interfacial hydrogen bonds formed between different kinds of oxygen-related functional groups of sulfonated GO (SGO) and polymer aid in the construction of extended architecture of proton conducting channels, which further facilitate the diffusion of protons.² Several PEMs were explored with SGO based fillers. As example, Zarrin *et al.*¹ prepared SGO/Nafion composite membrane and demonstrated it to PEMFC operating under high temperature and low humidity. The GO was produced from natural graphite flakes by modified Hummers method and then functionalized using 3-mercaptopropyl trimethoxysilane as sulfonic acid group precursor. They found that maximum power density of SGO/Nafion membrane increases by 3.98 fold over pristine Nafion membrane at 120 °C and 25% RH. Shau *et al.*¹⁷ fabricated the sulfonic acid functionalized graphene (S-graphene)/Nafion composite membrane and applied it in low humidity PEMFC. The functionalization of graphene was performed by sulfonic acid containing aryl radicals to increase the number of sulfonate groups per cluster volume of graphene domain. It was found that peak power density of S-graphene/Nafion membrane increases by 1.36 fold compared to that of pristine Nafion membrane at 70 °C and 20% RH. Beydaghi *et al.*³⁰ prepared PVA composite membrane that was prepared using SGO and PVA solution. It was found that tensile strength and proton conductivity of SGO/PVA membrane are higher with respect to

pristine PVA membrane. The higher tensile strength was due to effectual stress transfer to SGO sheets through interfacial hydrogen bonds. The higher proton conductivity was attributed to chemical interactions between different kinds of oxygen-containing functional groups of SGO and PVA. Although SGO based PEMs are reported by several research groups, the realization of a complete physiochemical, thermomechanical, electrochemical and fuel barrier properties have rarely been investigated.

On the other side, incorporation of metal oxide nanoparticles-anchored SGO sheets into PEM is an ultimate strategy in improving the dispersion of SGO sheets, which facilitates the surface roughness of PEM and compatibility with electrodes. Among the studied metal oxide nanoparticles, Fe₃O₄ has synthesis flexibility and eco friendliness and is the efficient catalyst for various electrochemical reactions.^{31,32} Fe₃O₄ possesses a high density of –OH groups that generate hydrogen bonds with free water existing in membrane thereby slow down the evaporation of water from membrane and facilitate the proton transfer by vehicle mechanism.³³ Besides, the interfacial hydrogen bonding between –OH groups of Fe₃O₄ and sulfonic acid (–SO₃H) groups and fluorine atoms (–F) of Nafion enhances thermal and mechanical stabilities of the composite membrane.⁹ If the Fe₃O₄ anchored SGO sheets could be effectually intercalated into the Nafion matrix, superior properties with respect to pristine Nafion could be capitalized, which may bring out ameliorated PEMFC performance. Again the existence of Fe₃O₄ into the polymer matrix is a problem that facilitates the oxidative degradation of PEM when combined with hydroxyl (OH[•]) and hydroperoxyl (OOH[•]) radicals formed in cathode during PEMFC operation. Recently, Beydaghi *et al.*⁹ reported that the addition of 5 wt% Fe₃O₄–SGO could increase the durability of SPEEK/PVA blend significantly. During 120 h of operation, the fuel cell equipped with Fe₃O₄–SGO/SPEEK/PVA membrane showed a OCV reduction of 0.65 mV h^{–1}, which is lower by a factor of 1.3 compared to that of fuel cell equipped with SPEEK/PVA membrane (0.85 mV h^{–1}). Thus, addition of Fe₃O₄ with SGO is a better approach to suppress the effect of oxidative degradation on PEM, because Fe₃O₄ intercalates between the SGO layers which precludes the direct exposure of Fe₃O₄ to OH[•] and OOH[•] radicals. The intention of the present study is to investigate the impact of a combination of composite filler (Fe₃O₄–SGO) and Nafion on performance of PEMFC operating under high temperature and low humidity through its morphological, thermomechanical, electrochemical and fuel barrier properties.

2. Experimental section

2.1. Materials

Natural graphite powder, iron(III) chloride hexahydrate (FeCl₃·6H₂O, 97%), iron(II) sulphate heptahydrate (FeSO₄·7H₂O, 99%), sodium nitrate (NaNO₃, 99%), sodium nitrite (NaNO₂, 97%), sodium borohydride (NaBH₄, 98%) and potassium permanganate (KMnO₄, 99.3%) were received from Alfa Aesar. Sulfanilic acid (C₆H₇NO₃S, 99%), sulfuric acid (H₂SO₄, 95%), hydrogen peroxide (H₂O₂, 32%) and hydrochloric acid (HCl,



35%) were procured from Daejung Chemicals, South Korea. Nafion solution (5%) in lower aliphatic alcohols and ammonium hydroxide (NH₃OH, 5 M) were procured from Sigma Aldrich. *N,N*-Dimethylformamide (DMF) was obtained from Duksan reagents, South Korea. Gas diffusion electrodes (40 wt% Pt on XC-72) were procured from NARA Cell Tech, South Korea.

2.2. Synthesis of phenyl sulfonated GO and Fe₃O₄-SGO composite

First, GO was synthesized from natural graphite powder according to modified Hummers method as described in ref. 34. SGO was then synthesized *via* a two-step process, similar to a procedure reported in ref. 30. In the first step, partial reduction of GO was performed by NaBH₄. A 75 mg of GO was dispersed in 75 mL of deionized (DI) water by ultrasonication for 1 h. Then, 15 mL of 0.1 M NaBH₄ was added dropwise into the GO dispersion and stirred at 80 °C for 1 h. The reduced product was collected *via* centrifugation, washed several times with DI water and dried in oven at 100 °C for 12 h. In the second step, aryl diazonium salt of sulfonic acid was grafted on reduced GO *via* diazonium coupling. A 75 mg of reduced GO was dispersed in 75 mL of DI water by ultrasonication for 1 h. Separately, 50 mg of sulfanilic acid and 20 mg of NaNO₂ were dispersed in 1 M HCl solution by ultrasonication at 0–3 °C. The obtained aryl diazonium salt of sulfonic acid was added into the dispersion of reduced GO with continuous stirring at 0–3 °C. Subsequently, 5 mL of 80% N₂H₂ was added dropwise and stirred for another 3 h. The resultant product was collected *via* centrifugation, washed several times with DI water and dried in oven at 100 °C for 12 h.

Fe₃O₄-SGO composite was prepared *via* hydrothermal method. A 100 mg of SGO was dispersed in 100 mL of DI water by ultrasonication for 1 h. Separately, desired amount of Fe₃O₄ nanoparticles (produced by co-precipitation method, similar to a procedure reported in ref. 33) was dispersed in DI water and subsequently added into the SGO suspension. The resultant mixture was further sonicated for 1 h, loaded into the Teflon lined stain less steel autoclave and heated at 180 °C for 12 h. Afterward, the solid product was collected *via* centrifugation, washed several times with DI water and dried in oven at 100 °C for 12 h.

2.3. Preparation of composite membranes

Nafion composite membranes were prepared *via* solution casting method. A 500 mg of Nafion (precast membrane at 100 °C for 12 h) was dissolved in 10 mL of DMF. Subsequently, the desired amount of Fe₃O₄-SGO (to achieve the weight ratios of 0.5, 1.5 or 3%) was impregnated with the above solution to realize a composite membrane. The resultant mixture was sonicated for 1 h followed by mechanical stirring for 12 h. Composite solution was poured on a clean Petri plate and allowed to dry under vacuum at 80 °C for 12 h. Composite membrane thus formed was peeled off from Petri plate and dried at 120 °C for 2 h to remove solvent residues. Nafion (without filler) and GO composite membranes were also

prepared to systematically compare their properties with respect to Fe₃O₄-SGO membrane. The prepared composite membranes such as Nafion/GO (3 wt%), Nafion/Fe₃O₄-SGO (0.5 wt%), Nafion/Fe₃O₄-SGO (1.5 wt%) and Nafion/Fe₃O₄-SGO (3 wt%) has been designated as Nafion/GO-3, Nafion/SGF-0.5, Nafion/SGF-1.5 and Nafion/SGF-3, respectively. The thicknesses of the dry membranes were measured at three random points over the surface using a digital micrometer and were in the range from 50 to 80 μm. Although a high variation observed in thicknesses of dry membranes, the amount of Nafion was controlled in each membrane to be same and this ensures appropriate comparison between various samples. Finally, the membranes were pre-treated by boiling in 3% H₂O₂, 1 M H₂SO₄ and H₂O in sequence each for 1 h. Scheme 1 illustrates the preparation process of Nafion/Fe₃O₄-SGO composite membrane.

3. Characterizations

Surface morphology of GO, SGO and Fe₃O₄-SGO specimens was observed by transmission electron microscope (TEM) (JEM-2010, JEOL) and field emission scanning electron microscope (FE-SEM) (SUPRA 40VP, ZEISS). Crystalline facets, surface defects, functional groups and thermal stability of GO, SGO and Fe₃O₄-SGO specimens were investigated by X-ray diffractometer (XRD) (X'pert-MRD equipped with CuKα radiation, Pro Philips), Raman spectrometer (HORIBA-Lab RAM-HR equipped with He-Ne laser beam), Fourier transform infrared spectroscopy (FT-IR) (GX spectrometer equipped with a DTGS detector, PerkinElmer) and thermogravimetric analyzer (TGA) (Q50-TA instruments) respectively. Surface and cross-sectional morphologies of pristine Nafion and composite membranes were observed by using a scanning electron microscope (SEM) (JSM-6400, JEOL). Cross-sectional morphology and corresponding quantitative elemental mappings of composite membrane were performed by energy dispersive X-ray (EDX) spectroscopy coupled with SEM. Topographical difference on pristine Nafion and composite membranes was observed by atomic force microscope (AFM) (multimode-8 model, Bruker). The imaging was performed in contact mode using an ultra-sharp antimony doped silicon tip with a radius of around 20 nm and spring constant of around 40 N m⁻¹. Line profiles were used to investigate the height variation at a particular cross-section on membrane surface. The deviation of actual membrane surface [(*x*, *y*)] from an ideal atomically smooth surface (*μ*) is defined as surface roughness. The surface morphology of the membrane varies from area to area due to the variation in local surface roughness and crumpled surface. The root-mean-square (RMS) roughness (*S*_q) may give useful information about the surface topography of membrane, and it was calculated using the eqn (1):

$$S_q = \sqrt{\frac{1}{MN} \sum_{k=0}^{M-1} \sum_{l=0}^{N-1} [Z(x_k - y_l) - \mu]^2} \quad (1)$$

where *M* and *N* are respective *x* and *y* points in the specimen area, *Z*(*x*, *y*) is the surface and





Scheme 1 Preparation process of Nafion/Fe₃O₄-SGO composite membrane.

$$\mu = \frac{1}{MN} \sum_{k=0}^{M-1} \sum_{l=0}^{N-1} Z (x_k - y_l) \text{ is the mean height} \quad (2)$$

Thermal stability of the membrane specimens was analyzed by TGA (Q50-TA instruments) from 30 to 800 °C at a heating rate of 5 °C min⁻¹ under a nitrogen atmosphere. Thermomechanical stability of the membrane specimens was investigated by using a dynamic mechanical analyzer (DMA) (Q800-TA instruments) from 0 to 200 °C at a heating rate of 10 °C min⁻¹ under a nitrogen atmosphere.

4. Measurements

4.1. Water uptake and dimensional stability

Prior dried (100 °C for 5 h) membrane specimens were measured for mass, length and thickness, and then submerged into DI water at 60 °C for 24 h to attain equilibrium. Afterward, the water on the surface of membranes was carefully blotted with tissue paper and mass, length and thickness of membranes were measured again.^{5,28} The measurement was repeated three times for each membrane using different specimens, and the average value was used for calculation. % of changes in mass, length and thickness were calculated using the eqn (3)–(5):

$$\text{Change in mass (\%)} = \left[\frac{M_{\text{wet}} - M_{\text{dry}}}{M_{\text{dry}}} \right] 100 \quad (3)$$

$$\text{Change in length (\%)} = \left[\frac{L_{\text{wet}} - L_{\text{dry}}}{L_{\text{dry}}} \right] 100 \quad (4)$$

$$\text{Change in thickness (\%)} = \left[\frac{T_{\text{wet}} - T_{\text{dry}}}{T_{\text{dry}}} \right] 100 \quad (5)$$

where M_{wet} , L_{wet} and T_{wet} are the mass (mg), length (mm) and thickness (μm) of wet membrane specimens, respectively, and M_{dry} , L_{dry} and T_{dry} are the mass, length and thickness of dry membrane specimens, respectively.

4.2. Water contact angle

Wettability of the membrane specimens was measured by static water contact angle method. The measurement was performed at room temperature using a contact angle goniometer (DSA10, Kruss GmbH analyser, Germany). The detailed procedure of contact angle measurement can be found in the ref. 6.

4.3. Ion exchange capacity

Ion exchange capacity (IEC) indicates the number of milliequivalents of ions present in 1 g of a dry membrane.¹⁷ The required amount of dry membrane specimen was equilibrated in 0.1 M NaCl for 24 h to exchange H⁺ with Na⁺ ions. The released H⁺ ions were then titrated against 0.01 M solution of NaOH using phenolphthalein as an indicator. By measuring the volume of NaOH consumed, the molar quantity of ionic sites containing H⁺ ions was determined. The titration was repeated three times for each membrane using different specimens, and the average value was used for calculation. The IEC was calculated using the eqn (6):

$$\text{IEC (meq. g}^{-1}\text{)} = \frac{\text{volume of NaOH consumed} \times \text{concentration of NaOH}}{\text{weight of dry membrane specimen}} \quad (6)$$

4.4. Proton conductivity

The proton conductivity of membrane specimens was measured in the longitudinal direction with a four-probe BekkTech cell by alternating current (AC) impedance method.³⁵ A piece of membrane (30 mm × 5 mm) was placed across the Pt probes, and membrane resistance (R , Ω) was measured using a frequency response analyzer (Scitech instrument conjugated with a Keithley-2400 source meter) as a function of temperature under low humidity. The proton conductivity (σ) of membrane specimens was calculated using the eqn (7):



$$\sigma \text{ (mS cm}^{-1}\text{)} = \frac{L}{RTW} \quad (7)$$

where L is the fixed distance between four Pt probes (*i.e.*, 0.42 cm), R is the resistance (ohm) of the membrane specimen, and T and W are the respective thickness (cm) and width (cm) of the membrane specimen. The above mentioned measurement was repeated at least three times for each membrane using different specimens, and the average resistance value was used for calculation.

4.5. Electrical conductivity

The electrical conductivity of membrane specimens was measured using a four probe method.³⁶ A piece of membrane (30 mm × 5 mm) was placed across the Pt probes, and membrane resistance (R , Ω) was measured using a Keithley Electrometer as a function of applied voltage. The electrical conductivity (σ) of membrane specimens can be calculated using the eqn (8):

$$\sigma \text{ (mS cm}^{-1}\text{)} = \frac{G \times l}{A} \quad (8)$$

where G is the conductance (Siemens) of the membrane, l is the thickness (cm) of the membrane and A is the active area (cm²) of the membrane.

4.6. Hydrogen (H₂) permeability

H₂-permeability measurements were carried out *via* traditional constant volume/variable pressure method at 30 °C under anhydrous condition. A detailed method of measuring the H₂ permeability can be found in the ref. 37. The measurement was repeated three times for each membrane using different specimens, and the average value was used for calculation. The H₂ permeability was calculated using the eqn (9):

$$\text{Permeability (barrer)} = DS = \frac{V_p l (p_{p2} - p_{p1})}{\left[ART \Delta t \left(P_f - \frac{p_{p2} + p_{p1}}{2} \right) \right]} \quad (9)$$

where D is the H₂ gas diffusivity coefficient (cm² s⁻¹), S (cm³ (cm² s cmHg)⁻¹) is the solubility coefficient, V_p is the constant permeation volume (cm³), l is the film thickness (cm), A is the active membrane surface (cm²), R is the gas universal constant (J mol⁻¹ K⁻¹), T is the temperature (K), P_f is the feed pressure (cmHg) and Δt is the time taken for the pressure to change from p_{p1} to p_{p2} (sec).

5. Fabrication of membrane electrode assembly (MEA) and evaluation of PEMFC performance

Commercial gas diffusion electrodes (GDE; NARA Cell Tech, South Korea, thickness = 0.46 mm) with Pt catalyst loading of 0.5 mg cm⁻¹ were adopted to use as the electrodes in MEA fabrication. MEAs with an active electrode area of 2.5 cm² were obtained by sandwiching membrane between gas diffusion

electrodes and subsequent hot pressing under a pressure of 210 kg cm⁻² at 110 °C for 3 min.^{17,38} Each obtained MEAs were coupled with air tight Teflon gaskets and fixed in single cell fixture. PEMFC performance of MEAs was evaluated using Smart II (WonATech, South Korea) fuel cell test station. Flow rate of hydrogen and oxygen gases to their respective anode and cathode were fixed to be 450 and 600 mL min⁻¹, respectively. The relative humidity of PEMFC depends upon the moisture content ($m\text{H}_2\text{O}$), mass of water vapor (D) and saturated vapor pressure of water (P_{sat}). In order to attain desired relative humidity (*i.e.*, 100% and 25%), the parameters such as gas supply temperature (GST) and dew point humidification temperature (DPHT) were adjusted. After equilibrating the desired humidity level, the cell voltage was measured as a function of current density. The reproducibility of data was ensured by repeating the measurements at least twice with given set of conditions. All MEAs were evaluated in PEMFC atmospheric pressure without applying any back pressure.

6. Results and discussion

6.1. Characterizations of GO, SGO and Fe₃O₄-SGO

FE-SEM and TEM images on surface morphologies of GO, SGO and Fe₃O₄-SGO are shown in Fig. 1a–f. GO exhibits the morphology of wavy, multilayered and wrinkled sheets (Fig. 1a and d), due to the intercalations of oxygen-related functionalities. In contrast, flat morphology is observed for SGO (Fig. 1b and e), because of the removal of oxygen-related functionalities *via* chemical reduction. In the case of Fe₃O₄-SGO composite, Fe₃O₄ nanoparticles ranging from 60 to 120 nm are densely anchored over the SGO sheets with homogeneous distribution (Fig. 1c and f), and no Fe₃O₄ nanoparticles scattered outside of the sheets, representing effectual combination between Fe₃O₄ and SGO. The electrostatic interactions exerted between –OH group of Fe₃O₄ and –OH, –O–, –CO₂H and –SO₃H groups of SGO are responsible for dense anchoring of Fe₃O₄ over the SGO sheets. The obtained selected area electron diffraction (SAED) pattern (Fig. 1f-inset) ensured the poly-crystalline natured inverse cubic spinel structure of Fe₃O₄ nanoparticles. To investigate the crystalline structure of GO, SGO and Fe₃O₄-SGO, the XRD was performed and obtained diffraction patterns are presented in Fig. 2a. The characteristic peak of graphite observed at 26.32° was disappeared and an intense peak observed at 11.56° confirmed the formation of GO, which is ascribed to 001 plane.³⁹ The calculated interplanar distance of GO is 0.75 nm, which is higher than that of graphite and is due to intercalation of oxygen-related functional groups. It can be seen that SGO exhibits the 2θ and interplanar distance of 24.38° and 0.35 nm, respectively. The interplanar distance of SGO is lower than that of GO and is due to the partial restacking of SGO sheets *via* π - π interactions upon removal of oxygen functionalities.⁴⁰ In the case of Fe₃O₄-SGO composite, a broad peak observed at 24.2° is attributed to the 002 reflection plane of SGO, whereas the sharp peaks observed at 33.15, 35.87, 41.01, 54.06, 57.59 and 62.47 are attributed to the 200, 311, 400, 422, 511 and 440 facets of Fe₃O₄, respectively, which ensure the successful anchoring of Fe₃O₄ over the surface of SGO. D and G





Fig. 1 FE-SEM images of (a) GO, (b) SGO and (c) Fe_3O_4 -SGO; TEM images of (d) GO, (e) SGO and (f) Fe_3O_4 -SGO and inset (f) SAED pattern.

bands are two significant features to characterize the Raman spectra of GO materials, which provide the information on structural defects, degree of disorders and carbon hybridization (Fig. 2b).^{41,42} The D band at 1359 cm^{-1} ascribes to the A_{1g} vibration modes of sp^3 hybridized disordered carbon lattice,

while G band at 1591 cm^{-1} ascribes to the E_{2g} mode of sp^2 hybridized ordered carbon lattice. These bands specify that an intensive oxidation destroys the sp^2 character and prompt the defects on carbon lattice. The intensity ratio I_D/I_G of GO and SGO is 0.87 and 0.9, respectively, which indicate the successful

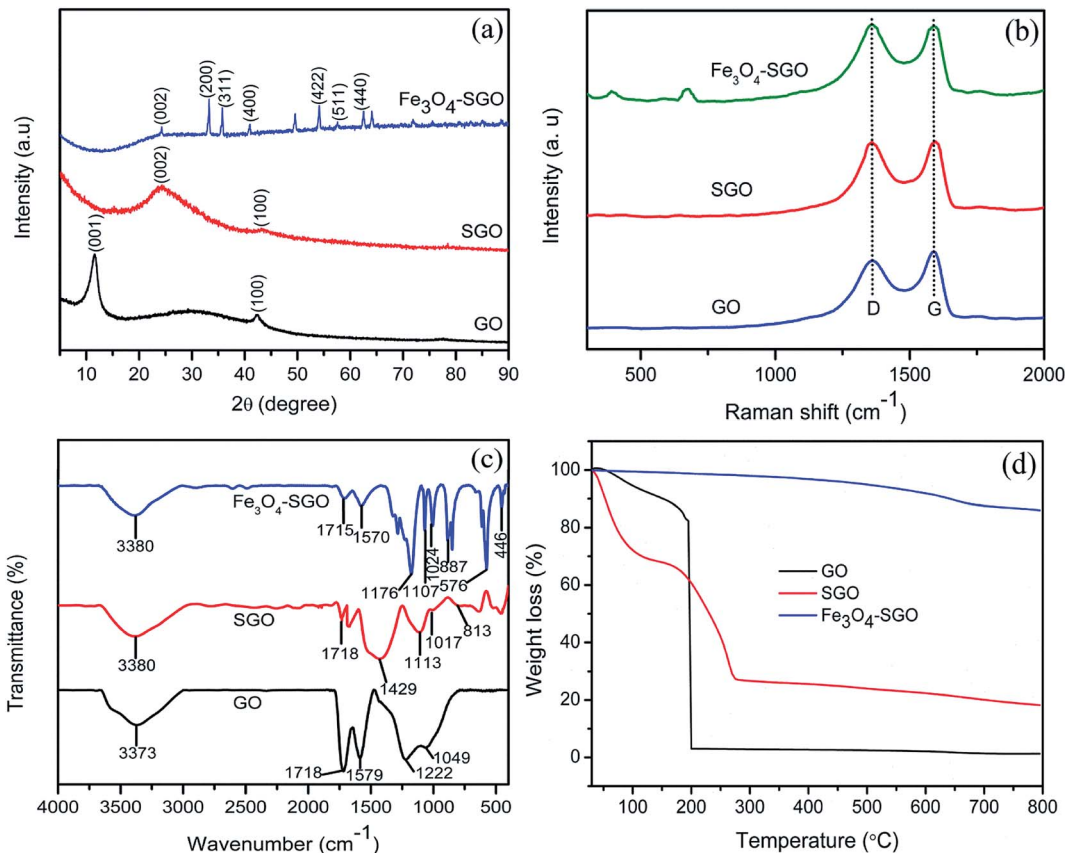


Fig. 2 (a) XRD patterns, (b) Raman spectra, (c) FT-IR spectra and (d) TGA curves of GO, SGO and Fe_3O_4 -SGO.



reduction and functionalization of later by $-\text{SO}_3\text{H}$ containing organic moiety. In addition to the abovementioned carbon bands, an A_{1g} mode of Fe_3O_4 can be found at 669 cm^{-1} , confirming the composite structure of Fe_3O_4 with SGO sheets of Fe_3O_4 -SGO solid proton conductor. Fig. 2c demonstrates the FT-IR spectra obtained at room temperature for GO, SGO and Fe_3O_4 -SGO. GO oxidation from graphite was verified by the characteristic peaks at 3373 , 1718 , 1222 and 1049 cm^{-1} , which are assigned to $-\text{OH}$ (from intercalated water molecules), $\text{C}=\text{O}$ (from carboxylic acid group), $\text{C}-\text{OH}$ (from carboxylic acid group) and $\text{C}-\text{O}$ (from epoxy group) stretching, respectively.⁴³⁻⁴⁵ The peak appearing at 1579 cm^{-1} in GO is consistent with graphite, which is related to the stretching vibration of $\text{C}=\text{C}$ from unoxidized graphitic domains.²⁸ Compared to GO, two significant peaks are observed for SGO at 1113 and 1017 cm^{-1} , which are assigned to the respective symmetric and asymmetric stretching modes of $\text{O}=\text{S}=\text{O}$ in $-\text{SO}_3\text{H}$ groups; the small peak appearing at 813 cm^{-1} is corresponding to the stretching vibration of *p*-disubstituted phenyl groups. The apparent reduction in stretching vibration of $\text{C}=\text{O}$ at 1718 cm^{-1} in FT-IR spectrum of SGO indicate the effective reduction of GO by present method. The presence of Fe_3O_4 in Fe_3O_4 -SGO composite is confirmed from the bands found at 576 and 887 cm^{-1} , owing to the stretching modes of $\text{Fe}-\text{O}$, $\text{Fe}-\text{O}-\text{C}$, respectively. TGA profile of prepared nanostructures is given in the Fig. 2d. Two significant degradations are observed for GO as follows: (i) from 30 to $100\text{ }^\circ\text{C}$ and (ii) from 100 to $203\text{ }^\circ\text{C}$. The former one is due to the removal of moisture mainly physisorbed free water molecules. The later is because of elimination of oxygen-labile functional groups such as carboxyl, epoxy, hydroxyl and so forth. The quantity of oxygen-labile functional groups in GO is about 89.51% according to TGA analysis and the principal reason for excess weight loss at $200\text{ }^\circ\text{C}$ is decomposition of carbon atoms of GO together with oxygen during thermal combustion process.^{42,46} By comparison, an improved thermal stability is observed for SGO with a residual weight of 18.23% , owing to the partial removal of oxygen-labile functional groups *via* chemical reduction. Notably, the second weight loss in SGO from 150 to $270\text{ }^\circ\text{C}$ is 32.91% which verifies the sulfonation of GO to SGO. The removal of oxygen-related functionalities of GO by NaBH_4 before sulfonation may lead to incorporate excess number of aryl diazonium salt of sulfanilic acid on GO. The thermal stability of SGO is further improved after anchoring Fe_3O_4 nanoparticles, as evidenced by higher residual weight of Fe_3O_4 -SGO *i.e.*, 86.03% and is due to the ceramic behavior of the corresponding composite given *via* Fe_3O_4 nanoparticles. The hydrolytic stability of Fe_3O_4 and Fe_3O_4 -SGO composite was measured in 1 M acidic solution at $70\text{ }^\circ\text{C}$ to understand the dissolution of Fe_3O_4 ; details including figures and explanation, are provided in ESI.†

6.2. Characterizations of membranes

6.2.1. Morphological properties. The internal morphology and filler dispersion of the composite membranes are significant factors in determining macroscopic properties such as water uptake, proton conductivity, mechanical strength and gas

permeability.²⁸ Surface and cross-sectional SEM images of pristine recast Nafion, Nafion/GO-3 and Nafion/SGF-3 are displayed in Fig. 3a-f. It can be observed that pristine Nafion exhibits a clean and smooth surface (Fig. 3a), while incorporation of GO (Fig. 3b) or Fe_3O_4 -SGO (Fig. 3c) results in surface roughness, which is due to the crumpled behavior of fillers. Compared to pristine Nafion (Fig. 3d), the obvious wrinkles are observed throughout the cross section of Nafion/GO-3 (Fig. 3e) and Nafion/SGF-3 (Fig. 3f) membranes, which ensure the dispersion of fillers. Meanwhile, the Fe_3O_4 -SGO fillers show a more uniform dispersion than GO within Nafion matrix as a result of strong interfacial interactions (hydrogen bonding) between $-\text{OH}$, $-\text{O}-$, $-\text{CO}_2\text{H}$ and $-\text{SO}_3\text{H}$ groups of Fe_3O_4 -SGO and $-\text{SO}_3\text{H}$ groups of Nafion, thereby increasing the mutual compatibility between fillers and Nafion matrix. In such a way, the co-continuous proton conducting channels are generated across the Nafion/SGF-3 membrane, which facilitate the proton conductivity. Scheme S1 (ESI†) shows the possible interactions exerted between Nafion and Fe_3O_4 -SGO in composite membrane. The water contact angle of Nafion/SGF-3 membrane is 87.21° (Fig. 3c-inset), indicating the presence of hydrophilic surfaces due to the presence of polar groups such as $-\text{OH}$, $-\text{O}-$, $-\text{CO}_2\text{H}$ and $-\text{SO}_3\text{H}$. The contact angle of the pristine Nafion membrane was 103.56° (Fig. 3a-inset). However, this value was reduced to 87.21° after incorporating $3\text{ wt}\%$ Fe_3O_4 -SGO, indicating an enhancement in hydrophilicity due to an increase in the aforementioned polar groups. The peak found at about 6.3 keV (due to Fe) in the EDX spectrum of Nafion/SGF-3 membrane (Fig. 3h) confirms the incorporation of Fe_3O_4 -SGO in the Nafion matrix. The density and distribution of Fe_3O_4 -SGO in the Nafion matrix were also examined by quantitative energy dispersive elemental mapping. It can be seen that Fe_3O_4 -SGO is uniformly distributed on the entire cross section of Nafion rather than only being located at a particular site (Fig. 4f), which helps to improve the proton conductivity and mechanical stability of composite membranes. 2D and 3D AFM topographies and lines profiles of pristine recast Nafion, Nafion/GO-3 and Nafion/SGF-3 membranes are provided in Fig. 5. The image size of each membrane is $5\text{ }\mu\text{m} \times 5\text{ }\mu\text{m}$. Bright and dark regions in the topographies represent the height variations on the membranes. The topography exhibits significant morphological difference on the Nafion membrane before and after incorporating GO or Fe_3O_4 -SGO. Pristine Nafion exhibits a detailed structure with randomly distributed irregular spikes (approximately 100 – 260 nm width and 1 – 13 nm height), while the subsidence and protrusions are distributed on the surface of Nafion/GO-3 (approximately 100 – 960 nm width and 1 – 90 nm height) and Nafion/SGF-3 (approximately 100 – 600 nm width and 1 – 86 nm height) membranes. Detailed structure with spikes might be partially hidden on the surface of composite membranes because the subsidence and protrusions are relatively higher than spikes. The RMS roughness of above specified membranes was calculated by eqn (1). The RMS roughness of pristine Nafion is approximately 1 nm , similar to uniform polymer membrane reported in the literature.¹⁷ However, the RMS roughness of Nafion/GO-3 and Nafion/SGF-3 membranes is approximately 10 and 12 nm , respectively. It is noteworthy





Fig. 3 Surface SEM images of membranes of (a) pristine recast Nafion, (b) Nafion/GO-3 and (c) Nafion/SGF-3; insets of (a), (b) and (c) corresponding water contact angle images; cross-sectional SEM images of membranes of (d) pristine recast Nafion, (e) Nafion/GO-3 and (f) Nafion/SGF-3; EDX spectra of (g) pristine recast Nafion and (h) Nafion/SGF-3.

that extended surface area of GO or Fe_3O_4 -SGO with wrinkled features is responsible for high RMS roughness of composite membranes. This appears to be advantageous toward more water uptake capacity and high compatibility with the electrode during fabrication of membrane electrode assembly.

6.2.2. Thermomechanical stabilities. Thermal stability of pristine recast Nafion, Nafion/GO-3 and Nafion/SGF-3 was studied by TGA to explore the effects of filler-polymer interactions, and obtained thermographs are demonstrated in Fig. 6a. Pristine Nafion and composite membranes depicted similar three step weight drops: (i) from 30 to 100 °C that is due to the loss of free water molecules from membranes, (ii) from 240 to 400 °C that is due to the decomposition of $-\text{SO}_3\text{H}$ groups in the side chain of the membranes and (iii) above 400 °C that is because of disintegration of the aliphatic backbones of polymer. It is noteworthy that thermal degradation of composite membranes delays throughout the study and is more pronounced in the temperature range from 400 to 800 °C. Composite membranes showed lower weight drops than pristine Nafion membrane, demonstrating that the addition of GO or Fe_3O_4 -SGO effectively improved the thermal stability of Nafion by prohibiting the movement of aliphatic backbones through interfacial interactions. At 800 °C, the pristine Nafion showed a residual weight of 0.26%, whereas Nafion/GO-3 and Nafion/SGF-3 membranes exhibited the residual weights of 2.89 and 8.24%, respectively. The higher residual weight in

composite membranes is a clear manifestation for higher thermal stability of composite membrane containing GO or Fe_3O_4 -SGO. Temperature dependent mechanical properties of pristine recast Nafion and optimized Nafion/GO-3 and Nafion/SGF-3 composite membranes are shown in Fig. 6b. It was found that the maximum value of storage modulus to be 1135 MPa for Nafion/SGF-3 membrane, which is almost 1.87 fold higher than that of Nafion/GO-3 membrane and 3.16 fold higher than that of pristine Nafion membrane. The enhancement in the mechanical strength of Nafion/SGF-3 membrane indicates strong hydrogen bonding interactions due the presence of common $-\text{SO}_3\text{H}$ groups in SGO and Nafion, which strictly restrict the reorganization of polymer chains and toughen the membrane up to a reasonable margin. The Fe_3O_4 nanoparticles over the SGO sheets help to increase adhesion of fillers with host matrix, which further toughens the membrane. Accordingly, Nafion/SGF-3 composite membrane is extremely beneficial for high temperature and low humidity PEMFC operation.

6.2.3. Water uptake, dimensional stability, hydration number and IEC. Percentage of mass, length and thickness change in membrane after immersing in water at 60 °C for 24 h referred to as the water uptake and dimensional stability as shown in Table 1. It can be seen that pristine Nafion membrane has 26.34% water uptake, whereas Nafion/GO-3 and Nafion/SGF-3 membranes have 31.24 and 35.63% water uptake,





Fig. 4 (a) SEM image of selected area of Nafion/SGF-3; corresponding elemental mappings of (b) carbon, (c) oxygen, (d) fluorine, (e) sulfur, (f) iron and (g) overlapping of elements.

respectively. By incorporating GO or Fe_3O_4 -SGO filler, the membrane surface turns to more hydrophilic and is responsible to higher water uptake of corresponding composite membrane. The formation of hydrogen bonds between $-\text{OH}$, $-\text{O}-$ and $-\text{CO}_2\text{H}$ groups of high surface fillers and free water molecules help to increase water uptake of Nafion/GO-3 and Nafion/SGF-3 membranes. Then, improvement in water uptake of the GO and Fe_3O_4 -SGO based membranes can increase the proton conductivity of corresponding membranes. Water uptake of Nafion/SGF-X membrane is found to be increased from 26.34 to 35.63% upon increasing the filler from 0 to 3 wt%, however, kinetics of water uptake decrease in 3 wt%, which is probably due to the increasing adhesion at polymer–filler interface. The addition of GO or Fe_3O_4 -SGO also improved the in-plane dimensional stability of membrane during hydration without affecting the water uptake significantly. Pristine Nafion membrane exhibits 17.31% swelling in length direction, whereas the membrane containing optimized wt% GO or Fe_3O_4 -SGO show 11.22 and 11.88% swelling, respectively. It is assumed that during solution casting, the fillers are perpendicularly oriented to the cross section of the membranes, which restricts the relaxation of polymer chains in lateral direction. Then, improvement in in-plane dimensional stability can reduce the delamination of composite membranes from electrodes during PEMFC operation and enhance the cell performance. An increase in swelling in the thickness direction of

membrane was also observed upon addition of fillers. This sort of membrane swelling can cause increased pressure between MEA and bipolar plates; however, it can be compensated by compression of the bipolar plates. Collectively, the improvement in water retention capacity without significantly affecting the dimensional stability enables the composite membranes to be well-suited for repeatable PEMFC operations. IEC value is considered to correspond to the density of functional groups in the PEMs.^{47,48} Table 1 lists the IEC value of all prepared membranes. IEC for the pristine Nafion membrane was 0.89 meq. g^{-1} , which was lower than the IECs of Nafion/GO-3 (1.03 meq. g^{-1}), and Nafion/SGF-3 (1.36 meq. g^{-1}). The IEC of the Nafion membrane increases with addition of GO or Fe_3O_4 -SGO. This is due to the SGO contained high density of $-\text{SO}_3\text{H}$ groups and Fe_3O_4 contained high density of $-\text{OH}$ groups. The number of water molecules absorbed per unit volume of $-\text{SO}_3\text{H}$ groups is defined as hydration number (λ).^{36,40,49} This was calculated using the eqn (10):

$$\lambda = \left[\frac{\text{water uptake}}{18.01} \right] \left[\frac{10}{\text{IEC}} \right] \quad (10)$$

where 18.01 is the molecular weight of water in g mol^{-1} .

It can be observed that by incorporating 3 wt% GO into the Nafion, the λ value increased from 16.40 to 16.79, which is again due to the high density of functional groups in the composite membranes provided by high surface GO. However, λ value



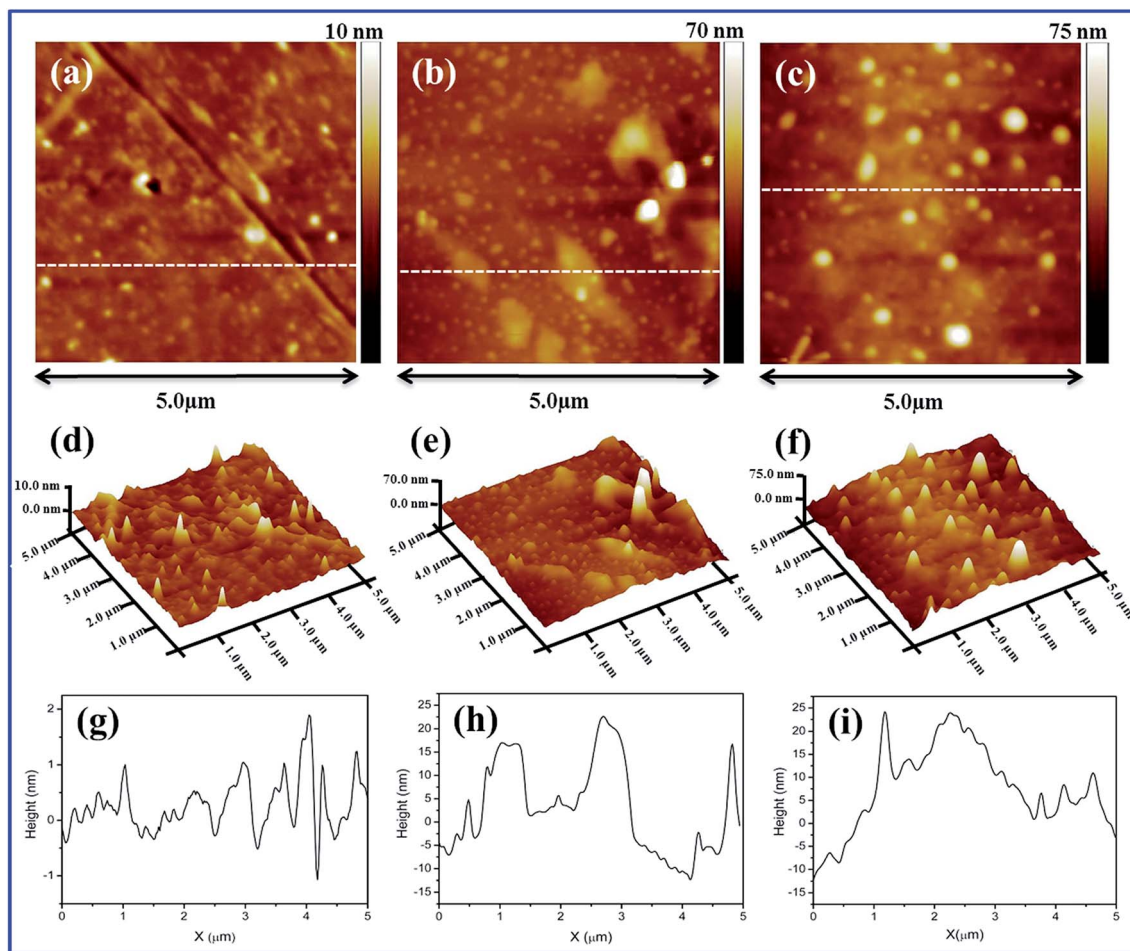


Fig. 5 2D AFM images of membranes of (a) pristine recast Nafion, (b) Nafion/GO-3 and (c) Nafion/SGF-3; 3D AFM images of membranes of (d) pristine recast Nafion, (e) Nafion/GO-3 and (f) Nafion/SGF-3; line profiles of membranes of (g) pristine recast Nafion, (h) Nafion/GO-3 and (i) Nafion/SGF-3.

decreased from 16.40 to 14.48 by incorporating 3 wt% Fe_3O_4 -SGO into the Nafion. The decrease in λ of Nafion/SGF-3 membrane can be attributed to the compact structure of membrane due to hydrogen bonding between surface $-\text{OH}$ groups of Fe_3O_4 and $-\text{F}$ and $-\text{SO}_3\text{H}$ groups of Nafion.

6.2.4. Proton conductivity and Arrhenius plot. As a key parameter to PEMs, the proton conductivities of membrane specimens were measured at different temperatures under 100% and 20% RH. Fig. 7a shows the all obtained proton conductivities of membrane specimens under 100% RH. It can



Fig. 6 (a) TGA and (b) DMA curves of pristine recast Nafion and composite membranes.



Table 1 Ion exchange capacity, water uptake, length change, thickness change, hydration number and proton conductivity values of different composite membranes

Membrane	Ion exchange capacity (meq. g ⁻¹)	Water uptake (%) at 60 °C	Length change (%) at 60 °C	Thickness change (%) at 60 °C	Hydration number at 60 °C
Recast Nafion	0.89	26.34 ± 2	17.31 ± 1	6.13 ± 2	16.40
Nafion/SGF-0.5	0.93	30.71 ± 3	15.41 ± 2	9.18 ± 1	18.33
Nafion/SGF-1.5	1.12	33.36 ± 2	14.18 ± 3	11.95 ± 2	16.51
Nafion/SGF-3	1.36	35.63 ± 3	11.88 ± 2	15.79 ± 3	14.48
Nafion/GO-3	1.03	31.24 ± 1	11.22 ± 3	13.35 ± 2	16.79

be observed that pristine Nafion specimen exhibited a proton conductivity of 36.67 mS cm⁻¹ at 30 °C, which increase with temperature and reached a peak value of 85.71 mS cm⁻¹ at 90 °C. The increased proton conductivity obtained is due to the rapid proton movement at high temperature. The transport of protons is relied on the two different mechanisms: (i) vehicular mechanism and (ii) Grotthuss mechanism.^{50,51} In GO based membrane, the -OH and -CO₂H groups can attach to the free water molecules and increase the proton transport of membrane with vehicular mechanism. In Fe₃O₄-SGO based membrane, the -SO₃H groups of SGO increase the bound water in membrane and encourage the proton diffusion from one ionic site (H₃O⁺SO₃⁻) to another ionic site *via* Grotthuss mechanism, and also hydrogen bonding between the -OH groups of Fe₃O₄ nanoparticles and free water molecules in

membrane encourage the proton conductivity *via* vehicular mechanism. Since, incorporation of high surface GO or Fe₃O₄-SGO in Nafion matrix is found to be enhanced the water uptake and IEC up to a reasonable margin, which consequently enhance the proton conductivity of composite membranes. Peak proton conductivities delivered by the Nafion/GO-3 and Nafion/SGF-3 specimens are 112.63 and 137.39 mS cm⁻¹ at 90 °C, which are 1.31 and 1.61 folds higher than that of a pristine Nafion membrane, respectively. On the other side, peak proton conductivity of Nafion/SGF-X specimens is found to be increased from 85.71 to 137.39 mS cm⁻¹ on increasing the Fe₃O₄-SGO content from 0 to 3 wt%, which may be due to the increase number of -SO₃H groups per cluster volume of a domain. Fig. 7c shows all obtained proton conductivities of membrane specimens under 20% RH. These conductivity values are many folds

**Fig. 7** Temperature variant proton conductivities of pristine recast Nafion and composite membranes (a) under 100% RH and (c) under 20% RH; corresponding Arrhenius plots of proton conductivities (b) under 100% RH and (d) under 20% RH.

lower in relation to the conductivity values obtained under 100% RH, which demonstrates the critical role of water molecules in proton conduction. At 120 °C, the peak proton conductivity yielded by the pristine Nafion, Nafion/GO-3 and Nafion/SGF-3 specimens is 2.45, 5.61 and 11.62 mS cm⁻¹, respectively. The lower conductivity of Nafion is due to the severe membrane dehydration caused by insufficient volume of bound water molecules, which could be successfully remediated by incorporating the GO or Fe₃O₄-SGO into the membrane.

The activation energy (E_a) required for the protons to travel through fabricated membranes was estimated using the Arrhenius eqn (11), as reported in the ref. 52 and 53.

$$\ln \sigma = \ln \sigma_0 - \frac{E_a}{RT} \quad (11)$$

here, σ and σ_0 are the values of the conductivity and pre-exponential factor, respectively, in mS cm⁻¹, E_a is the activation energy required for protons to travel in kJ mol⁻¹, R is the gas constant in J mol⁻¹ K⁻¹, and T is the absolute temperature in K. The E_a of Nafion membrane decreased after incorporating Fe₃O₄-SGO (Table 2), demonstrating the high density of -SO₃H and other hydrophilic groups were effectually dissociated throughout the Nafion/SGF-X membranes. Considering the E_a for vehicular mechanism is 16.4 kJ mol⁻¹ while that for Grotthuss mechanism is between 9.65 and 38.59 kJ mol⁻¹.^{54,55} The results obtained show that both vehicular and Grotthuss mechanisms coexist in the membranes under 100% RH, whereas Grotthuss mechanism dominates more under low humidity, due to lack of free water molecules.

6.2.5. Electrical conductivity. Fig. 8a shows the current-voltage (i - v) characteristics of the pristine recast Nafion, Nafion/GO-3 and Nafion/SGF-3 membranes. Compared with pristine Nafion, there is significant change observed in i - v characteristics of the composite membranes. Nafion membrane reveals negligible currents at all applied voltages from -10 to 10 V, whereas current of the composite membranes increase as increase the voltage, due to the electrically conducting fillers *i.e.*, GO and Fe₃O₄-SGO. The calculated electrical conductivity for the Nafion/SGF-3 membrane (0.37 mS cm⁻¹) is 3.08 fold higher than that of Nafion/GO-3 (0.12 mS cm⁻¹) and 17.61 fold higher than that of pristine Nafion membrane (0.021 mS cm⁻¹), due to high electrical conductivity and percolation threshold of Fe₃O₄-SGO.² However, the obtained electrical conductivity of the Nafion/Fe₃O₄-SGO membrane is generally less *i.e.*, lesser than the level which can affect the open circuit voltage of membrane during PEMFC operation.

6.2.6. H₂ permeability. The H₂ permeability data for pristine Nafion and composite membranes are shown in Fig. 8b. The higher H₂ permeability indicates higher H₂ crossover through the membrane. H₂ crossover for the Nafion/GO-3 membrane was 9.13 barrer, which was only 52.86% that of pristine Nafion membrane. The reduction in H₂ crossover was ascribed to the presence of GO, which made the membrane compact and dense. In the case of Nafion/SGF-3 membrane, the Fe₃O₄-SGO fillers were tightly wrapped with the aliphatic chains of polymers through interfacial hydrogen bonding, which generate complex structures throughout the cross-section of the membrane. These complex structures exhibit a tortuous path for the diffusion of H₂ gas molecules. Therefore, the Nafion/SGF-3 membrane exhibits a further low H₂ crossover compared to Nafion/GO-3 membrane.

6.2.7. PEMFC performance. Fig. 8c shows the polarization and power density curves of PEMFC containing pristine Nafion and Nafion/SGF-3 membranes. The PEMFC performances were measured: (i) at 70 °C under 100% RH and (ii) at 120 °C under 25% RH. At the first condition, the open circuit voltage (OCV) of Nafion/SGF-3 membrane begins from above 1 V, indicating that there is no electronic conductivity effect due to the existence of a small amount of Fe₃O₄-SGO in Nafion matrix. Peak power density of 636.58 mW cm⁻² at a load current density of 1258 mA cm⁻² was attained by the PEMFC containing pristine Nafion membrane, whereas the PEMFC containing Nafion/SGF-3 exhibited a peak power density of 783.69 mW cm⁻² at a load current density of 1589 mA cm⁻². The high performance of Nafion/SGF-3 membrane is primarily due to the high proton conductivity along with enhanced water uptake, attained by high density of -SO₃H and -OH groups on Fe₃O₄-SGO. Also, improvements were found in the ohmic and mass transport regions of the Nafion/SGF-3 membrane when compared to the pristine Nafion, demonstrating that this membrane has high efficacy for the free flow of protons and supply of ions to the cathode reaction sites. At the second condition (nearer dry condition), the PEMFC containing pristine Nafion and Nafion/SGF-3 yielded peak power densities of 144.89 and 258.82 mW cm⁻² at the load current densities of 431.36 and 640.73 mA cm⁻², respectively. In pristine Nafion case, due to the limited availability of water in membrane, the electro-osmotic drag of water from the anode to cathode and inadequate back diffusion of water from the cathode to anode cause the MEA to dehydrate. MEA dehydration results in an increase of ohmic resistance, leading to reduced cell performance. By contrast,

Table 2 Proton conductivity and activation energy values of different composite membranes

Membrane	Proton conductivity (mS cm ⁻¹) at 60 °C	Proton conductivity (mS cm ⁻¹) at 120 °C	Activation energy (kJ mol ⁻¹) under 100% RH	Activation energy (kJ mol ⁻¹) under 20% RH
Recast Nafion	68.53 ± 2	2.45 ± 0.4	14.73	26.52
Nafion/SGF-0.5	77.33 ± 4	4.58 ± 0.6	13.55	25.95
Nafion/SGF-1.5	86.66 ± 3	7.81 ± 0.4	12.05	23.21
Nafion/SGF-3	99.34 ± 4	11.62 ± 0.4	10.16	21.41
Nafion/GO-3	80.82 ± 2	5.61 ± 0.6	13.28	19.22



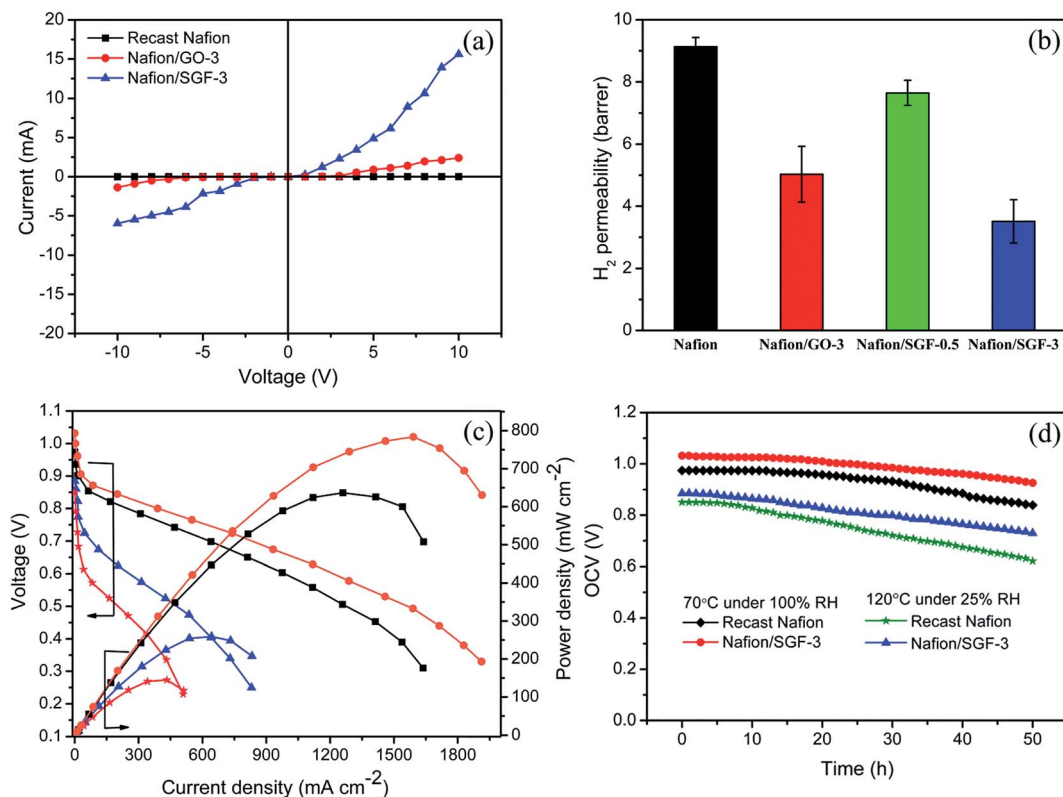


Fig. 8 (a) Current–voltage (i – v) characteristics of pristine recast Nafion and composite membranes; (b) H_2 permeability of pristine recast Nafion and composite membranes; (c) performances of H_2/O_2 PEMFC at 70 °C under 100% RH with (■) pristine recast Nafion and (●) Nafion/SGF-3 and at 120 °C under 25% RH with (★) pristine recast Nafion and (▲) Nafion/SGF-3; (d) stability test of pristine recast Nafion and Nafion/SGF-3 membrane in fuel cell configuration both at 70 °C under 100% RH and 120 °C under 25% RH.

the Nafion/SGF-3 membrane hold a greater amount of water due to the presence of Fe_3O_4 -SGO, which keep the membrane sufficiently wet under low humidity and enable the corresponding PEMFC to sustain without losing the performance excessively. Table S1 (ESI†) summarized the various Nafion based membrane performance results reported in literatures, for comparison with present study.^{1,4,17,56–66}

Accordingly, the present study provides a novel Nafion composite membrane with Fe_3O_4 -SGO filler particles which helps to improve proton conductivity and reduce H_2 gas crossover. However, O_2 gas crossover from the cathode to the anode through PEM is a crucial drawback that leads to generation of H_2O_2 and consequently membrane degradation. For the determination of O_2 gas crossover of prepared membranes, OCV of the studied membranes-equipped PEMFC was examined for 50 h at 70 °C under 100% RH (Fig. 8d). After 50 h of operation, the OCV of the pristine Nafion and Nafion/SGF-3 membrane were found to decrease from 0.97 to 0.83 V and 1.03 to 0.92 V, respectively. The lower OCV reduction rate of composite membrane indicates its good barrier property against O_2 gas diffusion from the cathode to anode, which can be attributed to the presence of Fe_3O_4 -SGO. To address effect of high temperature operation, OCV of the membranes-equipped PEMFC was examined at 120 °C under 25% RH. By comparison, the accelerated OCV degradations are observed for both pristine Nafion and Nafion/SGF-3 membranes, which represent the rapid

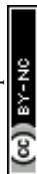
chemical degradation of membranes during high temperature operation.

7. Conclusion

Nafion composite membranes, incorporating different wt% of Fe_3O_4 -SGO, were successfully fabricated *via* a facile solution casting method. In the composite membranes, the number of $-\text{SO}_3\text{H}$ groups per cluster volume domain was increased by SGO, and the hydrogen bonding networks between $-\text{SO}_3\text{H}$ groups were extended by Fe_3O_4 . Because of the high density of $-\text{SO}_3\text{H}$, $-\text{CO}_2\text{H}$ and $-\text{OH}$ groups on Fe_3O_4 -SGO, the water uptake, ion exchange capacity and proton conductivity of the composite membrane significantly increased. The incorporation of Fe_3O_4 -GO restructured the aliphatic chains of Nafion through hydrogen bonding, which strengthened the membrane mechanically and thermally by 3.16 and 31.6 fold, respectively. By the combined efforts of high surface area and strong-acid functionalities of Fe_3O_4 -GO, composite membrane harvested number of protons and ameliorates the PEMFC performance at high temperature and low humidity condition compared to the PEMFC containing pristine Nafion membrane.

Conflicts of interest

The all authors declare that they have no conflict of interest.



Acknowledgements

This work was supported by the Korea Institute of Energy Technology Evaluation and Planning (KETEP) and the Ministry of Trade, Industry & Energy (MOTIE) of the Republic of Korea (No. 20164030201070). This research was supported by Basic Science Research Program through the National Research Foundation of Korea (NRF) funded by the Ministry of Science, ICT and Future Planning (NRF-2017R1A2B4005230).

References

- H. Zarrin, D. Higgins, Y. Jun, Z. Chen and M. Fowler, *J. Phys. Chem. C*, 2011, **115**, 20774–20781.
- M. Vinothkannan, A. R. Kim, G. Gnanakumar, J. M. Yoon and D. J. Yoo, *RSC Adv.*, 2017, **7**, 39034–39048.
- K. D. Papadimitriou, F. Paloukis, S. G. Neophytides and J. K. Kallitsis, *Macromolecules*, 2011, **44**, 4942–4951.
- K. Ketpang, K. Lee and S. Shanmugam, *ACS Appl. Mater. Interfaces*, 2014, **6**, 16734–16744.
- A. M. Baker, L. Wang, W. B. Johnson, A. K. Prasad and S. G. Advani, *J. Phys. Chem. C*, 2014, **118**, 26796–27802.
- S. Neelakandan, N. K. Jacob, P. Kanagaraj, R. M. Sabarathinam, A. Muthumeenal and A. Nagendran, *RSC Adv.*, 2016, **6**, 51599–51608.
- S. Zhou, S. D. Hai and D. Kim, *Fuel Cells*, 2012, **12**, 589–598.
- S. G. Peera, S. Meenakshi, K. H. Gopi, S. D. Bhat, P. Sridhar and S. Pitchumani, *RSC Adv.*, 2013, **3**, 14048–14056.
- H. Beydaghi, M. Javanbakht, A. Bagheri, P. Salarizadeh, H. G. Zahmatkesh, S. Kashefi and E. Kowsari, *RSC Adv.*, 2015, **5**, 74054–74064.
- V. Parthiban, S. Akula, S. G. Peera, N. Islam and A. K. Sahu, *Energy Fuels*, 2016, **30**, 725–734.
- H. Zhang, T. Zhang, J. Wang, F. Pei, Y. He and J. Liu, *Fuel Cells*, 2013, **13**, 1155–1165.
- V. Tricoli and F. Nannetti, *Electrochim. Acta*, 2003, **48**, 2625–2633.
- E. Chalkova, C. Wang, S. Komarneni, J. K. Lee, M. V. Fedkin and S. N. Lvov, *ECS Trans.*, 2009, **25**, 1141–1150.
- P. Kalappa and J. H. Lee, *Polym. Int.*, 2007, **56**, 371–375.
- Q. Yang, J. Liu, J. Yang, M. P. Kapoor, S. Inagaki and C. Li, *J. Catal.*, 2004, **228**, 265–272.
- A. R. Kim, M. Vinothkannan and D. J. Yoo, *Composites, Part B*, 2017, **130**, 103–118.
- A. K. Sahu, K. Ketpang, S. Shanmugam, O. Kwon, S. Lee and H. Kim, *J. Phys. Chem. C*, 2016, **120**, 15855–15866.
- G. Rambabu, N. Nagaraju and S. D. Bhat, *Chem. Eng. J.*, 2016, **306**, 43–52.
- Y. L. Liu, Y. H. Su, C. M. Chang, Suryani, D. M. Wang and J. Y. Lai, *J. Mater. Chem.*, 2010, **20**, 4409–4416.
- A. K. Geim, *Science*, 2009, **324**, 1530–1534.
- F. Schedin, A. K. Geim, S. V. Morozov, E. W. Hill, P. Blake, M. I. Katsnelson and K. S. Novoselov, *Nat. Mater.*, 2007, **6**, 652–655.
- H. Zhang, X. Lv, Y. Li, Y. Wang and J. Li, *ACS Nano*, 2010, **4**, 380–386.
- W. Chen, L. Duan, L. Wang and D. Zhu, *Environ. Sci. Technol.*, 2008, **42**, 6862–6868.
- D. H. Kim, J. H. Ahn, W. M. Choi, H. S. Kim, T. H. Kim, J. Song, Y. Y. Huang, Z. Liu, C. Lu and J. A. Rogers, *Science*, 2008, **320**, 507–511.
- G. Eda, G. Fanchini and M. Chhowalla, *Nat. Nanotechnol.*, 2008, **3**, 270–274.
- X. Wang, L. Zhi and K. Mullen, *Nano Lett.*, 2008, **8**, 323–326.
- E. Yoo, J. Kim, E. Hosono, H. S. Zhou, T. Kudo and I. Honma, *Nano Lett.*, 2008, **8**, 2277–2282.
- M. Vinothkannan, A. R. Kim, K. S. Nahm and D. J. Yoo, *RSC Adv.*, 2016, **6**, 108851–108863.
- M. R. Karim, K. Hatakeyama, T. Matsui, H. Takehira, T. Taniguchi, M. Koinuma, Y. Matsumoto, T. Akutagawa, T. Nakamura, S. Noro, T. Yamada, H. Kitagawa and S. Hayami, *J. Am. Chem. Soc.*, 2013, **135**, 8097–8100.
- H. Beydaghi, M. Javanbakht and E. Kowsari, *Ind. Eng. Chem. Res.*, 2014, **53**, 16621–16632.
- G. Gnana kumar, C. J. Kirubaharan, D. J. Yoo and A. R. Kim, *Int. J. Hydrogen Energy*, 2016, **41**, 13208–13219.
- J. Salamon, Y. Sathishkumar, K. Ramachandran, Y. S. Lee, D. J. Yoo, A. R. Kim and G. G. Kumar, *Biosens. Bioelectron.*, 2015, **64**, 269–276.
- H. Beydaghi and M. Javanbakht, *Ind. Eng. Chem. Res.*, 2015, **54**, 7028–7037.
- W. S. Hummers and R. E. Offeman, *J. Am. Chem. Soc.*, 1958, **80**, 1339.
- K. H. Lee, J. Y. Chu, A. R. Kim, K. S. Nahm, C. J. Kim and D. J. Yoo, *J. Membr. Sci.*, 2013, **434**, 35–43.
- S. Gahlot and V. Kulshrestha, *ACS Appl. Mater. Interfaces*, 2015, **7**, 264–272.
- L. Zhao, Y. Li, H. Zhang, W. Wu, J. Liu and J. Wang, *J. Power Sources*, 2015, **286**, 445–457.
- A. R. Kim, M. Vinothkannan and D. J. Yoo, *Int. J. Hydrogen Energy*, 2017, **42**, 4349–4365.
- A. Ghosh, S. Basu and A. Verma, *Fuel Cells*, 2013, **13**, 355–363.
- S. Gahlot, P. P. Sharma, V. Kulshrestha and P. K. Jha, *ACS Appl. Mater. Interfaces*, 2014, **6**, 5595–5601.
- J. Liu, D. Takeshi, K. Sasaki and S. M. Lyth, *Fuel Cells*, 2014, **14**, 728–734.
- M. Vinothkannan, C. Karthikeyan, G. Gnana kumar, A. R. Kim and D. J. Yoo, *Spectrochim. Acta, Part A*, 2015, **136**, 256–264.
- N. Jiang, Z. Xiu, Z. Xie, H. Li, G. Zhao, W. Wang, Y. Wu and X. Hao, *New J. Chem.*, 2014, **38**, 4312–4320.
- X. Liu, N. Wen, X. Wang and Y. Zheng, *Nanomater. Nanotechnol.*, 2015, **5**, 14–20.
- X. Li, J. Feng, Y. Du, J. Bai, H. Fan, H. Zhang, Y. Peng and F. Li, *J. Mater. Chem. A*, 2015, **3**, 5535–5546.
- B. Dehghanzad, M. K. R. Aghjeh, O. Rafeie, A. Tavakoli and A. J. Oskooie, *RSC Adv.*, 2016, **6**, 3578–3585.
- A. Muthumeenal, S. Neelakandan, D. Rana, T. Matsuura, P. Kanagaraj and A. Nagendran, *Fuel Cells*, 2014, **14**, 853–861.



- 48 S. P. Tung and B. J. Hwang, *Fuel Cells*, 2007, 7, 32–39.
- 49 S. Gahlot, H. Gupta, P. K. Jha and V. Kulshrestha, *ACS Omega*, 2017, 2, 5831–5839.
- 50 X. H. He, Y. Zheng, H. L. Yao, Y. W. Chen and D. F. Chen, *Fuel Cells*, 2014, 14, 26–34.
- 51 A. Bagheri, M. Javanbakht, H. Beydaghi, P. Salarizadeh, A. Shabanikia and H. S. Amoli, *RSC Adv.*, 2016, 6, 39500–39510.
- 52 Z. Jiang, X. Zhao, Y. Fu and A. Manthiram, *J. Mater. Chem.*, 2012, 22, 24862–24869.
- 53 K. Oh, B. Son, J. Sanetuntikul and S. Shanmugam, *J. Membr. Sci.*, 2017, 541, 386–392.
- 54 Y. Jin, S. Qiao, J. C. D. Costa, B. J. Wood, B. P. Ladewig and G. Q. Lu, *Adv. Funct. Mater.*, 2007, 17, 3304–3311.
- 55 K. D. Kreuer, *Chem. Mater.*, 1996, 8, 610–641.
- 56 K. Feng, B. Tang and P. Wu, *ACS Appl. Mater. Interfaces*, 2013, 5, 1481–1488.
- 57 X. He, G. He, A. Zhao, F. Wang, X. Mao, Y. Yin, L. Cao, B. Zhang, H. Wu and Z. Jiang, *ACS Appl. Mater. Interfaces*, 2017, 9, 27676–27687.
- 58 A. K. Mishra, N. H. Kim, D. Jung and J. H. Lee, *J. Membr. Sci.*, 2014, 458, 128–135.
- 59 R. Kumar, C. Xu and K. Scott, *RSC Adv.*, 2012, 2, 8777–8782.
- 60 D. C. Lee, H. N. Yang, S. H. Park, K. W. Park and W. J. Kim, *J. Membr. Sci.*, 2015, 474, 254–262.
- 61 S. Sasikala, S. V. Selvaganesh, A. K. Sahu, A. Carbone and E. Passalacqua, *J. Membr. Sci.*, 2016, 499, 503–514.
- 62 K. Ketpang, B. Son, D. Lee and S. Shanmugam, *J. Membr. Sci.*, 2015, 488, 154–165.
- 63 W. Zhengbang, T. Haolin and P. Mu, *J. Membr. Sci.*, 2011, 369, 250–257.
- 64 V. Ramani, H. R. Kunz and J. M. Fenton, *J. Membr. Sci.*, 2004, 232, 31–44.
- 65 Y. Kim, K. Ketpang, S. Jaritphun, J. S. Park and S. Shanmugam, *J. Mater. Chem.*, 2015, 3, 8148–8155.
- 66 K. Ketpang, S. Shanmugam, C. Suwanboon, N. Chanunpanich and D. Lee, *J. Membr. Sci.*, 2015, 493, 285–298.

