



Cite this: DOI: 10.1039/d5cp03345d

# Integrative reverse-screening approaches for target discovery: the case of hydroxytyrosyl punicate

 James Stewart,<sup>a</sup> Meriem Chayah<sup>ab</sup> and Carmen Domene \*<sup>a</sup>

Reverse-screening methodologies have emerged as powerful tools for identifying molecular targets of bioactive compounds, complementing experimental approaches and accelerating drug discovery. Recent developments in integrative strategies combining multiple databases of protein–ligand interactions, gene expression profiles, and structural information, offer improved accuracy and broader coverage in mapping compound–target networks. In this review, we highlight the principles, strengths, and limitations of these integrative reverse-screening approaches, with particular attention to their application in natural product research. As an illustrative case study, we discuss hydroxytyrosyl punicate (HT–PA), a synthetic phenolipid derived from hydroxytyrosol and punicic acid, which exhibits antiproliferative and antiparasitic effects. The application of multi-database reverse screening to HT–PA identified potential targets, including arachidonate 5-lipoxygenase (ALOX5), transient receptor potential channels (TRPs), and peroxisome proliferator-activated receptors (PPARs), which are central to inflammation, metabolism, and pain regulation. This case exemplifies how integrative computational frameworks can provide mechanistic insights, prioritize targets for experimental validation, and guide the therapeutic development of natural product derivatives. More broadly, we argue that multi-database reverse screening represents a versatile platform for uncovering the molecular basis of bioactivity and advancing rational drug discovery from complex natural compounds.

 Received 31st August 2025,  
 Accepted 30th March 2026

DOI: 10.1039/d5cp03345d

[rsc.li/pccp](http://rsc.li/pccp)

## Introduction

Molecular docking is a computational technique widely used in drug discovery and structural biology to predict the preferred orientation of a small molecule, the ligand, when bound to a target protein, the receptor. By estimating the binding mode and affinity, docking provides crucial insights into molecular interactions that can guide the rational design and optimisation of new therapeutics. In practice, docking simulates the interaction between a ligand and a target protein, typically applied to pre-selected compound sets rather than exhaustive chemical libraries. It can therefore accelerate early-stage drug discovery by highlighting promising candidates prior to experimental testing, reducing both time and cost.

In addition to conventional docking studies focused on limited ligand–receptor pairs, high-throughput virtual screening (HTVS) has become a central computational strategy in

target-driven drug discovery, one in which many compounds are screened against a single defined target. By enabling the rapid *in silico* evaluation of large chemical libraries, often comprising millions of compounds, against a defined protein structure, HTVS integrates streamlined docking workflows with increasingly sophisticated scoring functions, including machine-learning-accelerated approaches. Recent benchmarking efforts have highlighted both the scalability of HTVS and the sensitivity of its performance to target selection, structural quality, and scoring methodology.<sup>1–5</sup>

The applicability of HTVS has been further expanded by advances in protein structure prediction, particularly deep-learning-based modelling and co-folding strategies capable of generating structural templates for targets lacking experimental data. These approaches now provide access to three-dimensional models of individual proteins as well as protein–protein and protein–ligand complexes, thereby broadening the range of computationally addressable targets. The ability of modern structure-prediction frameworks to capture alternative conformations and potential binding sites has begun to mitigate some long-standing limitations of rigid-receptor docking, although challenges related to dynamic flexibility and scoring reliability remain. Crucially, the growing availability of

<sup>a</sup> Department of Chemistry, University of Bath, Claverton Down, BA2 7AY Bath, UK.  
 E-mail: C.Domene@bath.ac.uk

<sup>b</sup> Department of Medicinal and Organic Chemistry and Excellence Research Unit of Chemistry Applied to Biomedicine and the Environment, Faculty of Pharmacy, University of Granada, Campus Cartuja s/n, 18071, Granada, Spain



proteome-wide structural models has also begun to expand the scope of reverse screening, enabling interrogation across increasingly comprehensive target panels.

Although the present review focuses on ligand-centric reverse screening rather than forward HTVS, this evolving computational landscape provides essential context. Forward strategies assess many ligands against a predefined target, whereas reverse screening adopts an inverted paradigm in which a single compound is interrogated across a panel of potential protein targets, an approach particularly well suited to elucidating mechanisms of action, identifying off-target interactions, and supporting drug repurposing efforts.

In parallel, experimental high-throughput screening (HTS) remains a cornerstone of target-based drug discovery, enabling the large-scale empirical evaluation of compound libraries against defined biological systems. While HTS offers direct validation of bioactivity, it requires substantial experimental infrastructure and resources. Reverse screening, whether implemented computationally or experimentally, complements both HTVS and HTS by facilitating the identification of off-target interactions, the characterisation of polypharmacological profiles, and the uncovering of previously unrecognised biological activities associated with a given small molecule, applications that collectively define the scope of this review.

### Categories of reverse screening methods

Having established the conceptual distinction between forward and reverse screening, we now describe the principal methodological categories through which reverse screening is implemented. Reverse screening has become particularly valuable for natural products, drug repurposing candidates, and bioactive small molecules of complex or unknown polypharmacology, where the mechanistic basis of biological activity may be incompletely understood. By mapping potential targets of a compound, reverse screening not only aids drug discovery but also enhances mechanistic understanding of how a molecule exerts its biological effects. Such insights can guide subsequent experimental validation, inform therapeutic development strategies, and help anticipate potential off-target effects or adverse drug reactions. In this study, reverse screening serves as the primary tool to explore the biological targets of hydroxytyrosyl punicate (HT-PA), a novel compound derived from hydroxytyrosol and punicic acid, exemplifying how computational methods can complement experimental approaches in modern drug discovery.

Reverse screening methods can be broadly divided into four main categories based on the underlying computational strategy: ligand-based similarity or shape screening, pharmacophore-based screening, structure-based reverse docking, and hybrid approaches that integrate multiple sources of information, such as ligand similarity, protein structural data, and network- or machine-learning-based models, to improve target prediction accuracy.<sup>6,7</sup> These categories differ substantially in their data requirements, computational cost, and performance characteristics, and the appropriate choice of method depends heavily on

the nature of the query compound and the availability of structural or bioactivity data for the target space of interest.

### Performance evaluation of reverse screening methods

To assess the effectiveness of reverse screening approaches, several performance metrics are commonly employed. The area under the receiver operating characteristic curve (AUC) measures the overall ability of a method to discriminate true protein targets from non-targets across all possible score thresholds, with values approaching 1.0 indicating near-perfect discrimination. Enrichment factors (EF) quantify the fold-increase in the proportion of true targets recovered within a defined top-ranked fraction of predictions relative to random selection; early enrichment metrics such as EF at 1% or 5% are particularly informative in the context of target fishing, where only a small number of candidates are typically taken forward for experimental validation.<sup>8,9</sup> The Boltzmann-enhanced discrimination of ROC (BEDROC) metric addresses a known limitation of the standard AUC by placing greater weight on early enrichment, making it better suited to scenarios where the prioritisation of true targets near the top of ranked lists is critical.<sup>8</sup> Top-*k* recall, the fraction of known targets recovered within the top *k* predictions, is widely used as an intuitive, application-relevant performance measure, with *k* values of 1, 5, and 10 being the most commonly reported.<sup>10</sup>

In addition to these ranking-based metrics, other commonly used measures include precision, recall, and the F1 score, which are essential for evaluating the balance between false positives and false negatives in target prediction. Precision quantifies the proportion of correctly identified targets among all predicted targets, while recall reflects the ability of a method to recover known or validated targets. The F1 score, defined as the harmonic mean of precision and recall, provides a single summary statistic that is particularly informative when datasets are imbalanced, as is often the case in reverse-screening benchmarks. Further performance indicators include specificity and false positive rate, which assess how effectively a method excludes non-interacting proteins from its predictions.

Finally, mean average precision (MAP) is increasingly reported to evaluate overall ranking quality by integrating precision values across multiple cutoff thresholds. MAP is particularly valuable when screening against large and diverse target sets, as it reflects how consistently true targets are prioritized near the top of prediction lists. Collectively, the use of complementary metrics enables a more comprehensive and reliable assessment of reverse-screening performance and facilitates fair comparison across ligand-based, structure-based, and hybrid methodologies.

It should be noted, however, that several authors have cautioned that AUC and enrichment-based metrics may not fully capture the practical utility of target prediction tools for researchers, who are typically more concerned with whether the true target appears within the top few predictions rather than with global ranking quality.<sup>9,11</sup> This perspective has prompted wider adoption of top-*k* recall as a primary performance indicator in more recent benchmarking studies. Furthermore,



benchmarking studies have consistently shown that the performance of all reverse screening methods is sensitive to the quality and composition of the underlying datasets, and that commonly used benchmark sets may contain biases, including analogue bias, artificial enrichment, and false negatives, that can lead to overestimated performance in retrospective evaluations.<sup>10</sup> These considerations are critical when interpreting reported metrics across studies, as performance differences between methods may partly reflect differences in benchmark composition rather than true differences in predictive power.

Ligand-based shape screening compares the three-dimensional shapes or chemical features of a query compound with those of known ligands, based on the principle that structurally similar molecules are likely to bind similar targets. This approach, commonly referred to as ligand-based virtual screening (LBVS), is particularly useful when high-quality receptor structures are unavailable. It enables rapid, large-scale computational screening by leveraging the structural and chemical similarity between molecules, allowing researchers to prioritize compounds for further experimental evaluation. In benchmarking comparisons across multiple protein families, ligand-based methods have generally performed competitively with or better than structure-based approaches in terms of AUC and early enrichment, particularly for well-characterised target classes with large bioactivity datasets.<sup>12,13</sup> However, performance varies considerably across targets: ligand-based methods tend to underperform for targets with limited known ligand data or for structurally novel scaffolds dissimilar to training compounds.<sup>10,12</sup> Among the available online tools, SwissTargetPrediction, a hybrid 2D/3D ligand similarity method that combines Tanimoto-based fingerprint comparison with electroshape 3D similarity and logistic regression scoring, has been evaluated in multiple independent benchmarking studies. In a large-scale evaluation, a machine-learning-augmented reverse screening approach correctly identified the true target with the highest predicted probability for over 51% of external compounds across more than 2000 protein targets.<sup>11</sup> In an independent comparison of nine widely used ligand-based target fishing tools, SwissTargetPrediction was found to produce the most reliable predictions overall, while the similarity ensemble approach (SEA) recovered true targets for the greatest proportion of query compounds.<sup>14</sup> SwissTargetPrediction achieved at least one correct human target in the top 15 predictions for over 70% of external compounds in validation experiments.<sup>15</sup> In a separate benchmarking study comparing five target prediction servers, the hybrid LigTMap server achieved a top-10 success rate of 86%, followed by SEA at 83% and SwissTargetPrediction at 78%, although SwissTargetPrediction showed the highest top-1 precision at 66%.<sup>16</sup>

Pharmacophore-based screening focuses on identifying the spatial arrangement of key functional groups, such as hydrogen bond donors or acceptors, hydrophobic regions, and aromatic rings, that are essential for biological activity. The predicted pharmacophore model of a query compound is then matched to known protein targets to identify potential interactions. This approach provides a detailed understanding of the critical

chemical features necessary for binding and can guide both target prediction and ligand optimization, even in the absence of complete structural information about the target proteins. PharmMapper is the principal publicly available tool for pharmacophore-based reverse screening,<sup>17</sup> operating through flexible alignment of query molecules against a database of protein-derived pharmacophore models with Z-score normalisation for target ranking. It has been widely applied in the literature, including in studies of chemopreventive natural products: for example, PharmMapper and ReverseScreen3D were used to predict that eucalyptol, the active component of cardamom, targets CASP-3 and cAMP-dependent protein kinase (PKA), providing a mechanistic basis for its reported anti-inflammatory and anti-proliferative activities.<sup>6,18</sup> In another application, Ge *et al.* combined PharmMapper with idTarget to predict that dihydropyrimidine dehydrogenase and spindle checkpoint kinase Bub1 are off-target binding partners of the antithrombotic agent dipyridamole, offering a computational explanation for its previously observed anticancer activity.<sup>19</sup> Despite its utility, PharmMapper has known limitations, including its dependence on the quality and completeness of its underlying pharmacophore database and periodic server unavailability.

In structure-based reverse docking, the query compound is systematically docked across a panel of protein structures. By estimating binding affinities using appropriate scoring functions, reverse docking predicts potential protein targets based on the likelihood of stable molecular interactions. Structure-based reverse docking offers mechanistic insight into compound–target interactions, revealing how and where a molecule may bind. However, it requires high-quality receptor structures, accurate docking algorithms, and substantial computational resources. Limitations in scoring functions or structural flexibility can sometimes result in false positives or false negatives, highlighting the need for careful interpretation of docking results.

TarFisDock,<sup>20</sup> idTarget,<sup>12</sup> and INVDOCK<sup>21</sup> represent the principal tools for structure-based reverse docking. The ACID tool, a consensus inverse docking server integrating results from multiple docking programmes, reported an AUC of 0.84 for drug repurposing predictions, recovering 62 of 91 known drug–target pairs within the top 2% of ranked predictions across a test set of 51 drugs.<sup>22</sup> A representative application involves reverse docking of phenolic natural compounds against a panel of 163 cancer-related proteins, which correctly identified protein kinases PDK1 and PKC as the targets of xanthohumol and isoxanthohumol, subsequently confirmed by *in vitro* biological testing.<sup>23</sup> In a further example, the targets of three herbal ingredients, acteoside, quercetin, and epigallocatechin gallate (EGCG), were successfully predicted across the human structural proteome using a combined pharmacophore and reverse docking pipeline, with the majority of known targets recovered and mechanistic pathway analyses performed *via* KEGG enrichment.<sup>12,21</sup>

Finally, hybrid approaches combine elements of ligand- and structure-based methods and frequently incorporate additional



data sources, such as chemogenomic information, protein–protein interaction networks, or machine learning algorithms. By integrating multiple sources of information, hybrid methods can enhance the coverage, accuracy, and reliability of target prediction. These approaches leverage the complementary strengths of individual methods, capturing interactions that might be overlooked by any single strategy, and providing a more comprehensive and robust framework for identifying potential protein targets for bioactive compounds. The LigT-Map server exemplifies this strategy, combining fingerprint-based ligand similarity search with docking and binding pose similarity analysis across 17 therapeutic protein classes, achieving a top-10 success rate of approximately 70% in validation experiments and outperforming purely ligand-based tools in several class-specific benchmarks.<sup>16</sup> More broadly, consensus-based approaches that aggregate predictions from multiple tools, such as the combined use of SwissTargetPrediction and SEA, have been shown to improve both precision and target coverage relative to either tool alone.<sup>14</sup> Despite their advantages, hybrid methods typically involve greater computational complexity and may be less interpretable than single-strategy approaches.

Among the available approaches, ligand-based shape screening currently offers the greatest number of publicly accessible online tools.<sup>7</sup> In contrast, only a single pharmacophore-based reverse screening tool (PharmMapper<sup>17</sup>) and three structure-based reverse docking platforms (TarFisDock,<sup>20</sup> idTarget,<sup>12</sup> and INVDock<sup>21</sup>) were identified; however, at the time of analysis, these were not consistently accessible for practical implementation. Accordingly, the present study focuses on ligand-based similarity screening methods with stable online availability, as described in the following section.

### Computational approaches and resources for ligand-centric target prediction

To provide a systematic overview of the available computational resources for ligand-centric target prediction, we have classified existing tools, servers, and databases according to their methodological approach. Table 1 summarises these resources, distinguishing between ligand-based prediction servers, structure-based reverse docking tools, reference databases, and emerging hybrid/integrative frameworks. For each entry, we indicate the type of method or data used, required inputs, typical outputs, and relevant limitations. Scheme 1 provides a decision flowchart to guide method selection depending on the nature of the query compound and the availability of structural or bioactivity data.

Rather than re-introducing the broad categories of reverse screening already described above, this section focuses on the methodological basis of ligand-based approaches in greater detail, as these form the basis of the analyses conducted in the present study. Ligand-based shape screening approaches exploit the principle that, in 2D, structurally similar molecules are likely to bind to similar protein targets.<sup>13</sup> In 3D, molecules with comparable shapes and aligned chemical features can interact with targets in analogous ways. To perform this type of

screening, a server requires access to a library of small molecules annotated with protein-binding data. By comparing the shape and chemical features of a query molecule to those in the database, potential protein targets can be identified.

While predictions of drug–target interactions can be broadly classified as either ligand-based or receptor-based,<sup>9</sup> ligand-based approaches are more widely used in practice owing to their speed, efficiency, and applicability across diverse compound classes.<sup>7,9</sup> Receptor-based approaches require a high-quality three-dimensional protein structure, which is not always available, whereas ligand-based approaches draw on the structural information of known ligands stored in public databases.

Ligand-based methods are based on the principle that structurally similar compounds tend to exhibit similar biological properties.<sup>13</sup> Ligand-based target prediction methods can be further divided into three major classes, based on how molecular similarities are determined: chemical similarity searching, machine learning (ML) approaches, and stacking algorithm methods. Among these, ML approaches have gained significant attention for their predictive performance and scalability with large datasets.<sup>8,10,24</sup> ML models are trained on datasets of compounds with known protein targets and employ classification algorithms, such as support vector machines, decision trees, and artificial neural networks, to classify compounds as active or inactive against specific targets. These models can incorporate diverse molecular descriptors and exclude non-informative features, thereby improving the accuracy of protein target identification for novel compounds.

ML-based ligand–target prediction<sup>25,26</sup> is typically divided into two main modelling paradigms: conventional quantitative structure–activity relationship (QSAR) models<sup>21,27</sup> and proteochemometrics (PCM) modelling.<sup>7,28</sup> QSAR models build mathematical relationships between molecular descriptors and biological activity, whereas PCM extends this concept by modelling interactions between multiple ligands and multiple targets, often resulting in improved predictive power.

Chemical similarity searching is the simplest and most computationally efficient method for target prediction but depends on the availability of a reference library containing chemical structures and known binding affinities.<sup>29–32</sup> In this approach, each molecule in the library is compared to the user-supplied query compound, and similarity scores are computed. Molecular structures are typically encoded into vectors—using molecular fingerprints—that capture key properties such as the presence of pharmacophores. Three main similarity search strategies are employed: top K hits,<sup>33</sup> similarity scores<sup>34–36</sup> and statistical similarity scores.<sup>37</sup>

The top K hits method ranks molecules in the reference library/database based on their similarity to the query molecule using various algorithms and measures. The top K hits are the molecules that have the highest similarity scores compared to the query molecule.

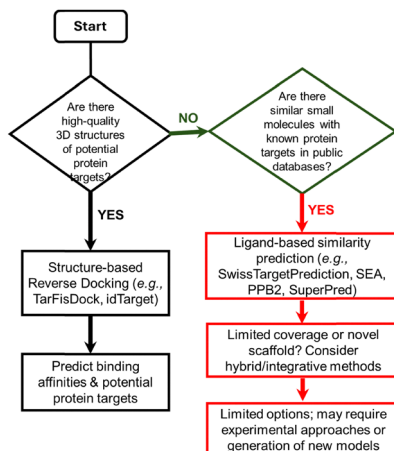
Similarity score-based ranking is based on the average similarity score between the query molecule and the molecules in the reference database. A common metric for this





**Table 1** Inventory of computational tools, servers, and databases for ligand-centric target prediction ('target-fishing'). The table distinguishes between (i) ligand-based predictive servers that infer target probabilities from chemical similarity or ML models; (ii) reference databases containing experimental ligand-protein binding data; (iii) structural protein databases used for reverse docking; (iv) structure-based reverse-docking servers that dock a given small molecule onto a panel of protein structures; and (v) emerging hybrid methods combining ligand- and structure-based information. For each entry, the type, method/data used, required inputs, typical outputs, and caveats or limitations are indicated

Type	Name	Method/data used	Input(s)	Output(s)	Comments
Ligand based target prediction server	SwissTargetPrediction	2D/3D chemical similarity + statistical/ML models	Query small molecule (SMILES/structure)	Ranked list of predicted protein targets	Widely used, good recall; depends on quality & coverage of ligand-target reference data
	SEA (Similarity Ensemble Approach)	Fingerprint-based similarity/statistical enrichment	Query ligand	Predicted targets (with similarity-based scores)	Common approach: may find off targets, but performance depends on reference set
	PPB2 (poly-pharmacology browser 2)	ML/fingerprint-based similarity	Query ligand	Target predictions (ranked)	Good for diverse small molecules; coverage depends on training data
	SuperPred	Ligand similarity/classification-based target prediction	Query ligand	Predicted targets	Conceptually like other ligand-based servers, but dependent on database maintenance & updates
	DIA-DB	3D ligand similarity + shape-based comparison against diabetes-related protein-ligand complexes	Query small molecule (SMILES/structure)	Ranked list of predicted diabetes-related targets	Specialised server focused exclusively on anti-diabetic targets; not suitable for broad target prediction outside metabolic disease context
Reference database (ligand target binding data)	BindingDB	Curated experimental binding affinities/protein binding data for many ligand-protein pairs	None (used as resource)	Bioactivity data, known ligand-target associations	Useful as training/reference data; not a predictive server itself
Protein structure database for reverse docking	PDTD (potential drug target database)	Collection of proteins with known 3D structures (from PDB) + binding site annotations	None (used as resource)	Repository of 3D protein structures for docking	Key resource for structure based reverse docking; but coverage limited to proteins with available high-quality structures
Structure based reverse docking server	TarFisDock	Reverse docking: dock query ligand against many protein structures, compute scores with DOCK algorithm	Query ligand + optionally a target set or full database	Ranked list of potential binding proteins + docking poses	Well established; results depend heavily on protein structure quality and docking limitations (rigid protein, scoring accuracy)
Newer hybrid methods (ligand + structure/machine learning)	LigTMap	Combines ligand similarity, docking, and binding similarity analysis for target prediction	Query small molecule	Predicted targets, possible binding modes	Promising hybrid strategy: may balance strengths of ligand and structure-based methods, but still limited by data/structure coverage
Integrated/network-based frameworks	— (e.g. STITCH, ChemMapper)	Various (data integration, chemogenic data, network analysis)	Depends on implementation	Target predictions with network-level context	Availability & maintenance uncertain; can provide broader biological context by integrating chemical, genomic, and network-level data



**Scheme 1** Decision flowchart for selecting a computational approach to identify protein targets of a small molecule. Depending on available information, such as the presence of high-quality 3D protein structures or known similar compounds, users can select structure-based reverse docking, ligand-based similarity prediction, or hybrid/integrative approaches. The flowchart provides guidance for predicting potential protein targets from a query compound.

comparison is the Tanimoto coefficient ( $T_c$ ), which is widely used to measure chemical similarity.<sup>30</sup> The  $T_c$  is calculated by dividing the number of shared features between two molecules by the total number of distinct features in both compounds. As the number of shared features increases, the  $T_c$  approaches 1, indicating high similarity, while less similarity results in a lower  $T_c$  value. Features in the molecules are typically represented using molecular fingerprints, where a molecular fragment is given a value of 1 in the presence of a feature and 0 in its absence.

The final main search method, statistical similarity scores, involves targeting prediction based on statistical similarity scores. Unlike the first two methods, this approach quantitatively expresses similarities in a statistical framework. The similarities between the query molecule and reference molecules are converted into statistical significance scores, which estimate the likelihood of random associations between molecules. The lower the significance score, the higher the chance that the targets of the reference molecules are shared with the query molecule. This method is particularly useful as it aims to eliminate bias toward targets with a higher number of known ligands, ensuring a more balanced and statistically robust comparison.

An alternative approach is algorithm stacking, which combines the high accuracy of machine learning with the efficiency of chemical similarity searches.<sup>7,38,39</sup> This strategy aims to minimize false positives by deprioritizing targets with low similarity to the query compound. In this method, similarity scores are converted into statistical significance values ( $p$ -values or  $e$ -values), which reflect the likelihood of random associations between the query molecule and the ligands in the database.

Together, these ligand-based similarity approaches provide a versatile toolkit for predicting potential protein targets when

structural information on receptors is limited or unavailable. However, the predictive value of such tools is best understood when applied to real compounds with therapeutic relevance. To illustrate their application, we selected hydroxytyrosyl punicate (HT-PA), a recently synthesised phenolipid derived from hydroxytyrosol and punicic acid, as a case study. HT-PA was chosen not only because of its promising biological activities, but also because it represents a class of natural product derivatives with limited mechanistic characterisation. In the following section, we outline the biochemical context of HT-PA and its precursors, before demonstrating how a suite of reverse-screening databases can be employed to explore its potential targets and mechanisms of action.

### Our case study: hydroxytyrosyl punicate

Pomegranate (*Punica granatum*) seed oil, extracted from the seeds of the fruit, is gaining recognition for its diverse array of health-promoting properties. Depending on the pomegranate variety, the seeds contain from 7% to 27% of pomegranate seed oil (PSO),<sup>40</sup> rich in bioactive compounds such as punicic acid, flavonoids, and antioxidants. The dominant lipid is punicic acid (PA)<sup>41,42</sup> which makes up anywhere between 30% to 80% of the seed oil<sup>43</sup> (Scheme 2). PA is of particular interest due to its wide range of biological activities, including but not limited to, anti-diabetic, anticarcinogenic and antiproliferative effects.<sup>41,43–46</sup>

Owing to high levels of PA, PSO has been shown to act as protection against cardiovascular disease, neurotoxicity and osteoporosis.<sup>47,48</sup> PSO has also been shown to have an effect in the treatment of type 2 diabetes mellitus (T2DM),<sup>45</sup> since PA is thought to be an agonist of peroxisome proliferator-activated receptor gamma (PPAR $\gamma$ ), a protein associated with insulin and glucose regulation.<sup>49</sup> Similarly, it is effective for the management of mitochondrial dysfunction often associated with diabetes.<sup>50</sup> PA has been shown to inhibit the growth of human prostate cancer cells<sup>51</sup> and breast cancer cells *in vitro*.<sup>44</sup> Many studies show positive effects on various biological processes like reduced blood pressure, increased antioxidative effects and lowering of blood sugar levels, highlighting the positive biological properties of pomegranates.<sup>52</sup>

Hydroxytyrosol (HT) is a polyphenolic, highly polar molecule (Scheme 2) which can be readily found in leaves and extra virgin olive oil. The 'Mediterranean diet' contains very high levels of HT in the form of foods such as grapes, wheat, and olives. Out of these, the best characterised is that of olive oil, where high olive oil levels in the diet have been linked to lower cancer mortality rates in Mediterranean countries when compared to Western countries.<sup>53</sup> It has been suggested that these reductions in mortality rates are in part due to the high levels of HT, monounsaturated fatty acids, and polyphenols in the diet.<sup>54–57</sup>

Studies on HT have shown that it can have anti-inflammatory, antioxidant and neuroprotective effects.<sup>58</sup> Recent work into this compound has focused on developing derivatives to improve metabolism, absorption and excretion processes in the body, with the most notable group being HT esters.<sup>55</sup> HT acetate, for example, has been shown to have an





Scheme 2 Structures of punicic acid (PA), hydroxytyrosol (HT), and hydroxytyrosyl punicate (HT-PA).

improved antioxidant ability over that of HT.<sup>55</sup> More esters syntheses have since been carried out between HT and various polyunsaturated fatty acids and the products have shown a variety of biological effects.<sup>59–61</sup> HT esters have impacts on cell proliferation<sup>59</sup> and have been implicated in reducing myeloma cell survival with no toxicity against human cells.<sup>60</sup>

A new HT ester has recently been synthesised, hydroxytyrosyl punicate (HT-PA) (Scheme 2). This phenolipid was obtained from the combination of HT and PA demonstrating greater antiproliferative and antitrypanosomal activity compared to its precursors in lung carcinoma A549 cells and against *Trypanosoma brucei* parasites, respectively.<sup>62</sup>

Given the limited literature on hydroxytyrosol conjugated with omega-5 polyunsaturated fatty acids (HT-PA), this compound was selected as a representative example to illustrate how computational approaches can be employed to explore potential mechanisms of action through the identification of putative protein targets. To this end, reverse-screening tools across various chemogenomic databases were employed. Identifying HT-PA's targets is essential for understanding how the compound may influence cellular processes, signalling pathways, or disease mechanisms. This knowledge could inform drug development strategies; once the key protein targets are known, the therapeutic potential of HT-PA in treating specific conditions can be explored. Moreover, uncovering these targets may reveal new applications beyond HT-PA's currently known uses. Such insights could also support the advancement of personalised medicine by maximising therapeutic efficacy while minimising adverse effects.

To evaluate the performance and complementarity of different reverse-screening platforms, we next applied a panel of widely used chemogenomic databases and online servers to HT-PA, using this compound as a test case to assess how each tool operates and what types of biological insights can be derived from their predictions.

### Databases and online servers

As detailed, six different servers and databases were employed to identify potential protein targets of HT-PA through various ligand-based reverse screening methods. Fluoxetine was used as a control, and the resulting data aligned with expectations in most cases, confirming that these computational approaches are generally reliable for reverse screening and target prediction.

Using SwissTargetPrediction, 23 targets were identified. All predicted proteins had identical probability scores, so no ranking could be established. Multiple isoforms of the same

protein family were detected such as histone deacetylases, resulting in 16 unique targets. The functions of these potential HT-PA targets are summarized in Fig. 1, which presents pie



Fig. 1 Summary of the most probable target classes for the query molecule displayed as a pie chart. Percentages are calculated based on the top 15 (A), 25 (B) and 50 (C) of predicted targets from SwissTargetPrediction.



charts of the most probable target classes for the query molecule based on the top 15, 25, and 50 predicted targets. These findings suggest that HT-PA exhibits a broad spectrum of activity and is not limited to a single protein class, potentially enhancing its pharmacological potential. When fluoxetine was inputted, several serotonin and dopamine receptors were given with a 100% probability, indicative of a reliable method for target prediction.

The similarity ensemble approach (SEA) search results are provided in Table 2. Among the top 10 targets, the TRPV subfamily of ion channels (TRPV1 and TRPV2) appeared multiple times, and cannabinoid receptors were also frequently detected. Some targets corresponded to non-human species, highlighting the need to select biologically relevant proteins for downstream experimental validation.

SuperPred identified 91 predicted targets, nine of which scored above 90% in probability. However, three, including the highest-ranked protein with a 98.74% probability score, had model accuracy scores below 80%, indicating lower reliability. The protein with the highest combined probability and accuracy was a glycine transporter (98.6% probability, 99.17% model accuracy), while the lowest recorded probability score was 50.53%. When fluoxetine was run through this server, as it is such a well-documented ligand, a table of known strong binders was given, including serotonin, adrenaline and norepinephrine transporters, and thus validates this tool as the approach correctly identified known protein targets.

BindingDB returned only a single potential target: ferricytochrome c peroxidase. This enzyme catalyzes the oxidation of organic substrates *via* hydrogen peroxide and is localized to the mitochondrial intermembrane space, where it contributes to apoptosis through cardiolipin oxidation. When fluoxetine was submitted, serotonin and dopamine transporters were identified with a Tanimoto coefficient of 1.00, indicating a perfect match and validating this search method.

Using DIA-DB, 18 potential targets were identified. The highest-scoring protein lacked a name and PDB entry and was therefore excluded. The next highest-ranking target was aldose reductase, and among the top 10, peroxisome proliferator-activated receptors (PPARs) were identified three times, corresponding to the  $\alpha$ ,  $\delta$ , and  $\gamma$  isoforms. This finding is particularly significant because PA is a known PPAR $\gamma$  agonist, suggesting that HT-PA may share protein targets and biological functions with its parent compound. Fluoxetine was inputted *via* a SMILE code, but no results were generated. Given that this server is exclusively focused on diabetes-related matters, and fluoxetine does not pertain to diabetes, the absence of data was deemed acceptable and incorporated into this study.

Polypharmacology browser 2 (PPB2) yielded 20 targets across its best-performing methods. Several proteins were identified multiple times, including arachidonate 5-lipoxygenase (ALOX5), cannabinoid CB2 receptor, and PPAR $\gamma$ , suggesting these proteins are strong candidates for HT-PA. Predicted target classes are displayed in Fig. 2, which shows compound–protein associations derived from multiple similarity and machine learning methods. Among these, the best-performing methods were ECfp4

NN(ECfp4) + NB(ECfp4) and Xfp NN(Xfp) + NB(ECfp4), highlighting the complementary nature of different computational strategies. When fluoxetine was inputted, serotonin and norepinephrine transporters were given as targets, with the nearest neighbours having a  $T_c$  value of 1.00, once again indicating a perfect match and validating this search method.

Across all servers, nearly 300 proteins were identified. Given the size of this list, an exhaustive analysis of every target was impractical. Differences in scoring, probability values, and ranking across platforms further complicated direct comparisons. Consequently, subsequent analyses focused on proteins consistently identified across multiple databases, as shown in Table 3. Recurrent identification across servers strengthens confidence in these proteins as potential HT-PA targets. Three proteins were prioritized for more detailed discussion based on biological relevance: ALOX5, PPAR $\gamma$ , and TRP channels. ALOX5, identified by three servers, is a cytosolic enzyme that catalyses the conversion of arachidonic acid into leukotrienes, which are potent mediators of inflammation. HT-PA may exert anti-inflammatory effects *via* modulation of ALOX5 activity, complementing findings from studies of polyphenol-rich compounds, which inhibit lipoxygenases and cyclooxygenases. PPAR $\gamma$  is a nuclear hormone receptor regulating lipid, glucose, and lipoprotein metabolism. It is a well-characterized target of PA, and its identification by DIA-DB and PPB2 suggests that HT-PA may retain similar metabolic and neuroprotective activities. PPAR $\gamma$  is predominantly expressed in adipose tissue, regulating genes involved in lipid metabolism and insulin signalling, and contributes to central nervous system processes such as inflammation and energy homeostasis. Activation of PPAR $\gamma$  by HT-PA could therefore offer therapeutic benefits in metabolic disorders and neurodegenerative diseases. TRP channels are membrane proteins involved in nociception and pain perception. Their repeated identification across SEA and SwissTargetPrediction indicates that HT-PA could modulate these ion channels, suggesting potential analgesic applications. Several TRP subfamilies were highlighted among the predicted targets, as detailed in Tables 2 and 4.

### Limitations and methodological considerations

Several limitations must be acknowledged when interpreting these results. Database accessibility and updates are critical, as online servers are continuously updated with new compounds, protein structures, and experimental data. Repeating calculations in the future may yield different predictions, affecting reproducibility and comparability across studies.

The study relied exclusively on ligand-based shape similarity screening, which, while efficient, may overlook targets with flexible or atypical binding sites not represented in current ligand libraries. Scoring and ranking limitations are also present, as probability and Tanimoto similarity values differ between platforms, and some servers provide unranked predictions (Fig. 1 and Table 2). Species differences further underscore the importance of selecting biologically relevant organisms for downstream validation. Finally, computational predictions alone cannot fully confirm HT-PA's interactions;



**Table 2** Predicted protein targets of hydroxytyrosyl punicate identified using the similarity ensemble approach (SEA) server. The table lists the UniProt identifier, gene name, and full protein name for each target

1433G_HUMAN	YWHAG	14-3-3 protein gamma
A0A0C7ACN7_PSEAI	PQSD	3-Oxoacyl-ACP synthase
AA2BR_RAT	ADORA2b	Adenosine receptor A2b
ADRB1_MOUSE	ADRB1	Beta-1 adrenergic receptor
AK1BA_HUMAN	AKR1B10	Aldo-keto reductase family 1 member B10
AK1C4_HUMAN	AKR1C4	Aldo-keto reductase family 1 member C4
ALF_CANAL		Fructose-bisphosphate aldolase
AMD_HUMAN	PAM	Peptidyl-glycine alpha-amidating monooxygenase
ARP19_RAT	ARPP19	cAMP-regulated phosphoprotein 19
CAH13_MOUSE	CA13	Carbonic anhydrase 13
CAH5A_HUMAN	CA5A	Carbonic anhydrase 5A, mitochondrial
CAH5B_HUMAN	CA5B	Carbonic anhydrase 5B, mitochondrial
CAH6_HUMAN	CA6	Carbonic anhydrase 6
CBS_HUMAN	CBS	Cystathionine beta-synthase
CNR1_MOUSE	CNR1	Cannabinoid receptor 1
CNR1_RAT	CNR1	Cannabinoid receptor 1
CNR1_HUMAN	CNR1	Cannabinoid receptor 1
CNR2_MOUSE	CNR2	Cannabinoid receptor 2
CNR2_HUMAN	CNR2	Cannabinoid receptor 2
CP74A_ARATH	CYP74A	Allene oxide synthase, chloroplastic
DGLA_HUMAN	DAGLA	Sn1-specific diacylglycerol lipase alpha
DHB3_HUMAN	HSD17B3	Testosterone 17-beta-dehydrogenase 3
DPOLB_RAT	POLB	DNA polymerase beta
ENPP2_MOUSE	ENPP2	Ectonucleotide pyrophosphatase/phosphodiesterase family member 2
ERCC1_HUMAN	ERCC1	DNA excision repair protein ERCC-1
ERG1_RAT	SQLE	Squalene monooxygenase
EST1_HUMAN	CES1	Liver carboxylesterase 1
FAAH1_MOUSE	FAAH	Fatty-acid amide hydrolase 1
FAAH1_HUMAN	FAAH	Fatty-acid amide hydrolase 1
FAAH1_RAT	FAAH	Fatty-acid amide hydrolase 1
FABPH_HUMAN	FABP3	Fatty acid-binding protein, heart
GP174_HUMAN	GPR174	Probable G-protein coupled receptor 174
GPR34_HUMAN	GPR34	Probable G-protein coupled receptor 34
GPR34_MOUSE	Gpr34	Probable G-protein coupled receptor 34
HYES_MOUSE	EPHX2	Bifunctional epoxide hydrolase 2
HYES_HUMAN	EPHX2	Bifunctional epoxide hydrolase 2
INHA_MYCTU	INHA	Enoyl-[acyl-carrier-protein] reductase [NADH]
KDM4E_HUMAN	KDM4E	Lysine-specific demethylase 4E
KPCA_BOVIN	PRKCA	Protein kinase C alpha type
KPCA_HUMAN	PRKCA	Protein kinase C alpha type
KPCL_MOUSE	PRKCH	Protein kinase C eta type
LEF_BACAN	LEF	Lethal factor
LKHA4_HUMAN	LTA4H	Leukotriene A-4 hydrolase
LOX15_HUMAN	ALOX15	Arachidonate 15-lipoxygenase
LOX15_PIG	ALOX15	Arachidonate 15-lipoxygenase
LOX15_RABIT	ALOX15	Arachidonate 15-lipoxygenase
LOX15_RAT	ALOX15	Arachidonate 15-lipoxygenase
LOX1_SOYBN	LOX1.1	Seed linoleate 13S-lipoxygenase-1
LOX5_RAT	ALOX5	Arachidonate 5-lipoxygenase
LPAR1_HUMAN	PAR1	Lysophosphatidic acid receptor 1
LPAR1_MOUSE	LPAR1	Lysophosphatidic acid receptor 1
LPAR2_HUMAN	LPAR2	Lysophosphatidic acid receptor 2
LPAR3_HUMAN	PAR3	Lysophosphatidic acid receptor 3
LPAR4_HUMAN	LPAR4	Lysophosphatidic acid receptor 4
LPAR4_MOUSE	LPAR4	Lysophosphatidic acid receptor 4
LPAR6_HUMAN	LPAR6	Lysophosphatidic acid receptor 6
LPXC_AQUAE	IPXC	UDP-3-O-acyl-N-acetylglucosamine deacetylase
LX15B_RAT	ALOX15b	Arachidonate 15-lipoxygenase B
M9TGV3_MYCTX	INHA	Enoyl-[acyl-carrier-protein] reductase [NADH]
MGLL_RAT	MGLL	Monoglyceride lipase
MPIP2_MOUSE	CDC25b	M-phase inducer phosphatase 2
NANA_STREE		Sialidase A
NSMA_RAT	SMPD2	Sphingomyelin phosphodiesterase 2
NU1M_BOVIN	MT-ND1	NADH-ubiquinone oxidoreductase chain 1
OXER1_HUMAN	OXER1	Oxoeicosanoid receptor 1
P2Y10_HUMAN	P2RY10	Putative P2Y purinoceptor 10
PA24B_HUMAN	PLA2G4B	Cytosolic phospholipase A2 beta
PA2A1_NAJMO		Acidic phospholipase A2 CM-I
PA2G5_HUMAN	PLA2G5	Calcium-dependent phospholipase A2
PA2G5_MOUSE	PLA2G5	Calcium-dependent phospholipase A2
PA2GA_MOUSE	PLA2G2A	Phospholipase A2, membrane associated



Table 2 (continued)

PA2GA_RABIT	PLA2G2A	Phospholipase A2, membrane associated
PA2GA_RAT	PLA2G2A	Phospholipase A2, membrane associated
PA_I000X	PA	Polymerase acidic protein
PLCG1_BOVIN	PLCG1	1-Phosphatidylinositol 4,5-bisphosphate phosphodiesterase gamma-1
POLH_HUMAN	POLH	DNA polymerase eta
POLI_MOUSE	POLI	DNA polymerase iota
POLK_HUMAN		DNA polymerase kappa
PPO2_AGABI	PPO2	Polyphenol oxidase 2
Q39829_SOYBN		Lipoxygenase
Q6UCJ9_TOXGO	ENR	Enoyl-acyl carrier reductase
Q7ZJM1_9HIV1	POL	Integrase
Q95214_RABIT	ACAT	Acyl-CoA:cholesterol acyltransferase
RPOB_ECOLI	RPOB	DNA-directed RNA polymerase subunit beta
S6A11_MOUSE		Sodium- and chloride-dependent GABA transporter 3
S6A13_MOUSE		Sodium- and chloride-dependent GABA transporter 2
THA_HUMAN	THRA	Thyroid hormone receptor alpha
THB_HUMAN	THRB	Thyroid hormone receptor beta
TLR2_HUMAN	TLR2	Toll-like receptor 2
TRPA1_RAT	TRPA1	Transient receptor potential cation channel subfamily A member 1
TRPV2_RAT	TRPV2	Transient receptor potential cation channel subfamily V member 2
TRPV1_RAT	TRPV1	Transient receptor potential cation channel subfamily V member 1
TRPV1_HUMAN	TRPV1	Transient receptor potential cation channel subfamily V member 1
TTHY_HUMAN	TTR	Transthyretin
TYTR_CRIFA	TPR	Trypanothione reductase
XPF_HUMAN	ERCC4	DNA repair endonuclease XPF

experimental studies including biochemical assays, cellular models, and *in vivo* investigations are essential.

Despite these limitations, integrating multiple servers provides a more comprehensive view of potential targets. Combining ligand-based approaches with other computational methods, such as structure-based docking, protein-protein interaction analysis, and molecular dynamics simulations, may uncover targets not detectable through ligand-based screening alone. Table 4 illustrates proteins consistently identified across servers, demonstrating how cross-validation improves confidence in predicted targets.

This study provides several broader lessons for reverse screening. Combining multiple servers increases reliability and helps identify overlapping, high-confidence targets such as PPAR $\gamma$ , ALOX5, and TRP channels (Table 4). Machine learning and similarity-based descriptors complement experimental databases, providing unique insights into protein interactions, as visualized in Fig. 2. Awareness of database updates, scoring limitations, and species specificity is critical for interpreting results accurately. Cross-validation against well-characterized compounds, exemplified by fluoxetine, enhances confidence in predictions. Collectively, these findings underscore the value of using complementary computational approaches alongside experimental validation. While exemplified here with HT-PA, these insights are broadly relevant to natural products, drug candidates, and phenolipid derivatives, offering practical lessons for assessing confidence and potential biases in reverse screening workflows.

## Conclusions

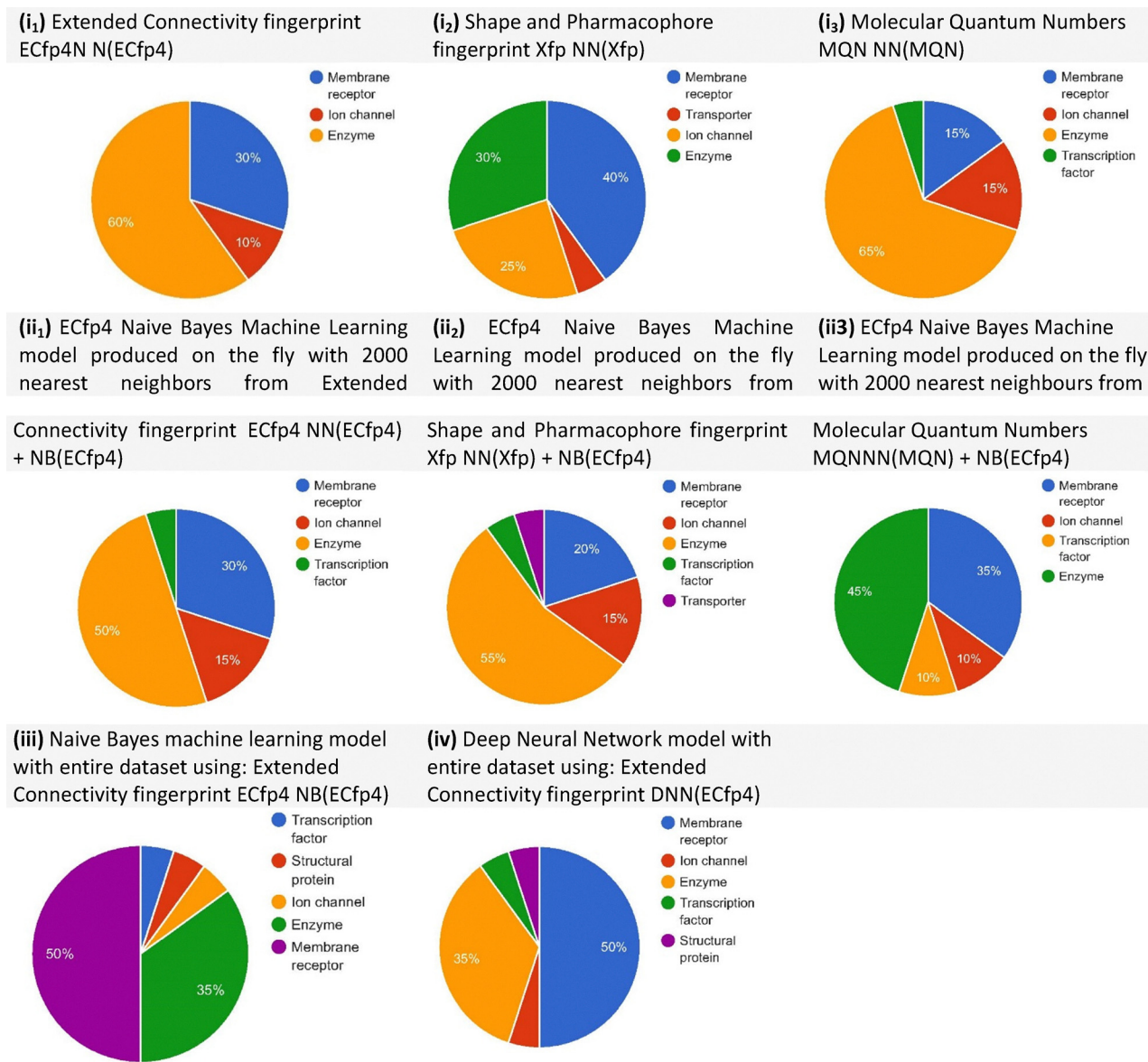
Reverse docking has emerged as a valuable computational strategy for identifying potential protein targets of small

molecules, facilitating drug repurposing, polypharmacology studies, and toxicity prediction. However, despite its advantages, several challenges limit its broader applicability and reliability. One major limitation is the availability and accessibility of target databases. While some tools come with built-in datasets, others rely on user-defined collections, which can introduce biases depending on the curation process. Additionally, many reverse docking databases are not openly accessible, restricting researchers' ability to validate findings across different platforms.

Another significant limitation is the reliability of protein structure databases. In shape- and pharmacophore-based screening, the accuracy of predictions depends on the quality of reference target-ligand interactions. These methods tend to identify well-characterized proteins but perform less reliably for novel targets, reinforcing a bias toward established pathways. Moreover, most scoring functions were originally developed for forward docking and are not fully optimized for large-scale reverse screening, introducing systematic bias into binding affinity estimates. The absence of standardized negative datasets further complicates performance assessment, as it remains difficult to distinguish true targets from false positives. Receptor flexibility also remains a persistent challenge, since most reverse docking approaches treat proteins as rigid structures and fail to capture the conformational dynamics that influence ligand binding. Ensemble and flexible docking algorithms are under active development, but their high computational demands currently limit their widespread application.

Despite these challenges, reverse docking continues to evolve. Improvements in score normalization, incorporation of receptor dynamics, and integration with complementary computational methods, including machine learning, are expanding its potential. As structural databases grow, and computational resources become more powerful, reverse





**Fig. 2** Predicted target classes displayed as pie charts based on compound-protein target associations in ChEMBL22, using different methods from the polypharmacology browser 2 (PPB2). The methods include: (i) nearest-neighbour search using: extended connectivity fingerprint (ECfp4 NN(ECfp4)), shape and pharmacophore fingerprint (Xfp NN(Xfp)), and molecular quantum numbers (MQN NN(MQN)); (ii) Naive Bayes (NB) models generated on the fly with the 2000 nearest neighbours, combining: ECfp4 NN(ECfp4) + NB(ECfp4), Xfp NN(Xfp) + NB(ECfp4), and MQN NN(MQN) + NB(ECfp4); (iii) Naive Bayes model trained on the entire dataset using ECfp4 (NB(ECfp4)); (iv) deep neural network (DNN) model trained on the entire dataset using ECfp4 (DNN(ECfp4)). Among these, the best-performing methods were ECfp4 NN(ECfp4) + NB(ECfp4) and Xfp NN(Xfp) + NB(ECfp4).

docking may become a more robust tool for target identification and drug discovery. Addressing the key issues of database accessibility, receptor flexibility, and inter-target score normalization will be crucial to realizing its full utility.

While hydroxytyrosyl punicate (HT-PA) serves as an illustrative case study, the following conclusions draw broader lessons from the comparative use of reverse screening approaches and databases. HT-PA is a novel phenolipid compound formed by combining hydroxytyrosol (HT) with punicic acid (PA), a fatty acid highly concentrated in pomegranate seed oil. This combination is expected to enhance their therapeutic

effectiveness against specific disorders, exemplifying a circular economy approach in drug discovery. Using ligand-based reverse similarity screening, numerous potential targets of HT-PA were identified across multiple computational platforms. These findings suggest that HT-PA may act on diverse targets, which could be beneficial in a therapeutic context but also raises the need to carefully evaluate its specificity and safety profile. In this study, all targets were identified through ligand-based shape similarity screening. While effective, this approach is limited to identifying targets structurally related to known ligands and may overlook proteins with flexible or



**Table 3** Protein targets identified by multiple servers in this study, along with their known functions

Protein	Server	Function
Arachidonate 5-lipoxygenase (ALOX5, 5-LOX)	STP	Catalyses the oxygenation of arachidonate, an intermediate in the formation of leukotrienes, key regulators of inflammation. <sup>63</sup>
	SEA	
Arachidonate 15-lipoxygenase (ALOX15, 15-LOX-1)	PPB2	Plays a role in glucose homeostasis and cancer cell proliferation.
	SEA	
Protein kinase C alpha (PKC $\alpha$ )	PPB2	Enzyme catalysing stereospecific peroxidation of fatty acids, with effects linked to cell differentiation, inflammation, carcinogenesis and atherogenesis. <sup>64</sup>
	SEA	
Peroxisome proliferator-activated receptor (PPAR $\gamma$ )	SEA	Plays both a positive and/or negative role in cell proliferation, differentiation, motility, apoptosis and inflammation. <sup>65</sup>
	PPB2	
Putative P2Y purinoreceptor 10 (P2RY10)	DIA-DB	Transcription factor with a role in energy metabolism, cell differentiation, apoptosis and inflammation. <sup>66</sup>
	PPB2	
Sphingosine 1-phosphate receptor 3 (S1PR3)	SEA	Has action as an anticancer agent, by slowing the growth and differentiation of cancer cells. <sup>67</sup>
	PPB2	
Transient receptor potential cation channel subfamily A member 1 (TRPA1)	SEA	Suspected to have a role in the regulation of migration of T cells. <sup>68</sup> P2 purinoreceptors might have a role in various conditions like cancer, diabetes, renal failure and thrombosis. <sup>69</sup>
	PPB2	
Sphingosine 1-phosphate receptor 3 (S1PR3)	STP	Overexpressed in many forms of cancers, potentially increasing tumour growth <sup>70</sup>
	SuperPred	
Transient receptor potential cation channel subfamily A member 1 (TRPA1)	SEA	Excitatory ion channel, acting as a sensor for pain, temperature, and water regulation <sup>71</sup>
	PPB2	

**Table 4** Similar protein targets identified by different servers used in this study, along with their known functions

Protein	Server (subfamily)	Function
Cannabinoid receptors 1 and 2 (CRN1, CRN2)	SEA (CRN1)	Receptor 1 has a role in synaptic signalling and mediation of GABA <sup>72</sup>
	PPB2 (CRN2)	
Pyruvate dehydrogenase kinase isoforms 1 and 2 (PDK1, PDK2)	STP (PDK1)	Receptor 2 is expressed predominantly in the immune system and control cytokine release <sup>72</sup>
	DIA-DB (PDK2)	
Transient receptor potential cation channel subfamilies M, V (TRVM8, TRVP1, TRVP2)	STP (TRVM8)	PDK1 and PDK2 have similar roles in cell metabolism and energy production in mitochondria <sup>73</sup>
	SEA (TRPV1/2)	
Adenosine receptor A2a and A2b (ADORA2a, ADORA2b)	STP (ADORA2a)	Ion channels which control the entry of Ca <sup>2+</sup> into the cell for various cellular pathways <sup>74</sup>
	SEA (ADORA2b)	
Dipeptidyl peptidase 2, 4, 8 and 9 (DPP2, DPP4, DPP8, DPP9)	DIA-DB (DPP4)	Control the inhibition or stimulation of adenylyl cyclase, regulating cytoprotective effects <sup>75</sup>
	SuperPred (DPP2/8/9)	
Protein-tyrosine phosphatase 2C, 1B and 9 (PRPN1, PRPN2, PRPN9)	SuperPred (PRPN1/2)	Major role in glucose metabolism, with many inhibitors being developed for this protein to treat type 2 diabetes <sup>76</sup>
	DIA-DB (PRPN9)	

atypical binding sites capable of accommodating broader chemical diversity. To expand on these insights, additional computational methods such as structure-based docking or protein-protein interaction network analysis could uncover novel targets beyond those detected with ligand-based approaches. Experimental validation through *in vitro* and *in vivo* studies, including biochemical assays, cellular models, and animal models, will be critical to confirm HT-PA's interactions with its predicted targets. Advanced computational techniques that account for protein conformational flexibility, such as molecular dynamics simulations, are also being explored and may identify additional targets that static models miss.

Evaluating HT-PA's binding specificity will be equally important. Binding affinity studies and structure-activity

relationship (SAR) analyses could clarify its selectivity profile and highlight potential off-target effects, guiding the rational design of derivatives with improved therapeutic windows. By integrating multiple computational and experimental strategies, a deeper understanding of HT-PA's mechanisms of action and pharmacological potential can be achieved. This comprehensive approach will not only enhance the safety and efficacy of HT-PA but also enable the development of more targeted therapies with improved clinical outcomes. Importantly, the potential for HT-PA to align with the principles of the circular economy, through the sustainable use of natural compounds, offers an additional opportunity to promote more environmentally responsible drug discovery.

Beyond the specific case of HT-PA, this study highlights broader insights into the current state of reverse screening



approaches. Comparing multiple servers and ligand-based methods reveals their respective strengths, limitations, and potential biases, providing a practical framework for researchers seeking to identify protein targets of small molecules. Ligand-based methods are efficient and widely accessible but may overlook targets with flexible or atypical binding sites. Integrating complementary approaches, such as structure-based docking, network analysis, or machine learning, can improve coverage and predictive accuracy. Taken together, these findings provide practical guidance for applying reverse screening methods to natural products and small molecules, and underscore the value of integrating computational predictions with experimental validation.

## Author contributions

The work was designed by C. D. experimental work was carried out by J. S. and C. D. the manuscript was written by J. S. and C. D. and with contributions from all authors. Figures and schemes were generated with contributions from J. S., M. C., and C. D. All authors have given approval to the final version of the manuscript.

## Conflicts of interest

There are no conflicts to declare.

## List of abbreviations

PA	Punicic acid
HT	Hydroxytyrosol
HT-PA	Hydroxytyrosol punicate
ALOX5	Arachidonate 5-lipoxygenase
TRPV1	Transient receptor potential cation channel
PPAR $\gamma$	Peroxisome proliferator-activated receptor
ML	Machine learning
QSAR models	Conventional quantitative structure-activity relationship
PCM	Proteochemometrics
PPB2	Polypharmacology browser 2
PSO	Pomegranate seed oil
T2DM	Type 2 diabetes mellitus
HTS	High-throughput screening
$T_c$	Tanimoto coefficient
SMILE code	Simplified molecular input line entry system
FP2	FingerPrint2D
ATC	Anatomical therapeutic chemical
SEA	Similarity ensemble approach
PPB2	Polypharmacology browser 2
ECfp4	Extended-connectivity fingerprint 4
MQN	Molecular quantum numbers
Xfp	Extended fingerprints
CBD	City block distances
NN	Nearest neighbour
NB	Naïve Bayes
DNN	Deep neural network

## Data availability

The data supporting the findings of this study are available from the corresponding author upon reasonable request. Additionally, the analyses used publicly available, third-party open-access databases, which can be accessed *via* the following links: SwissTargetPrediction: <https://www.expasy.org/resources/swisstargetprediction>. Similarity ensemble approach (SEA): <https://sea.bkslab.org/>. SuperPred: <https://prediction.charite.de/>. BindingDB: <https://www.bindingdb.org/rwd/bind/index.jsp>. DIA-DB: <https://bio-hpc.ucam.edu/dia-db/index.php>. Polypharmacology browser 2 (PPB2): <https://ppb2.gdb.tools/>.

## Acknowledgements

C. D. thanks HECBioSim, the UK High End Computing Consortium for Biomolecular Simulation (<https://hecbiosim.ac.uk>), which is supported by the EPSRC (EP/L000253/1). For the purpose of open access, C. D. has applied a Creative Commons Attribution (CC-BY) license to any Author Accepted Manuscript version arising.

## References

- 1 J. Abramson, J. Adler, J. Dunger, R. Evans, T. Green, A. Pritzel, O. Ronneberger, L. Willmore, A. J. Ballard, J. Bambrick, S. W. Bodenstein, D. A. Evans, C. C. Hung, M. O'Neill, D. Reiman, K. Tunyasuvunakool, Z. Wu, A. Žemgulytė, E. Arvaniti, C. Beattie, O. Bertolli, A. Bridgland, A. Cherepanov, M. Congreve, A. I. Cowen-Rivers, A. Cowie, M. Figurnov, F. B. Fuchs, H. Gladman, R. Jain, Y. A. Khan, C. M. R. Low, K. Perlin, A. Potapenko, P. Savy, S. Singh, A. Stecula, A. Thillaisundaram, C. Tong, S. Yakneen, E. D. Zhong, M. Zielinski, A. Židek, V. Bapst, P. Kohli, M. Jaderberg, D. Hassabis and J. M. Jumper, *Nature*, 2024, **630**, 493–500.
- 2 D. D. Wang, W. Wu and R. Wang, *J. Cheminf.*, 2024, **16**, 2.
- 3 Z. Qiao, W. Nie, A. Vahdat, T. F. Miller and A. Anandkumar, *Nat. Mach. Intell.*, 2024, **6**, 195–208.
- 4 R. Chowdhury, N. Bouatta, S. Biswas, C. Floristean, A. Kharkar, K. Roy, C. Rochereau, G. Ahdritz, J. Zhang, G. M. Church, P. K. Sorger and M. AlQuraishi, *Nat. Biotechnol.*, 2022, **40**, 1617–1623.
- 5 Q. Luo, S. Wang, H. Y. Li, L. Zheng, Y. Mu and J. Guo, *Protein Sci.*, 2024, **33**, e5167.
- 6 H. Huang, G. Zhang, Y. Zhou, C. Lin, S. Chen, Y. Lin, S. Mai and Z. Huang, *Front. Chem.*, 2018, **6**, 1–28.
- 7 S.-Q. Yang, Q. Ye, J.-J. Ding, Y. Ming-Zhu, A.-P. Lu, X. Chen, T.-J. Hou and D.-S. Cao, *Wiley Interdiscip. Rev.:Comput. Mol. Sci.*, 2021, **11**, e1504.
- 8 J. Vamathevan, D. Clark, P. Czodrowski, I. Dunham, E. Ferran, G. Lee, B. Li, A. Madabhushi, P. Shah, M. Spitzer and S. Zhao, *Nat. Rev. Drug Discovery*, 2019, **18**, 463–477.
- 9 M. Awale and J.-L. Reymond, *Systems Chemical Biology: Methods and Protocols*, 2019, pp. 255–272.



- 10 S. Dara, S. Dhamecherla, S. S. Jadav, C. M. Babu and M. J. Ahsan, *Artif. Intell. Rev.*, 2022, **55**, 1947–1999.
- 11 A. Daina and V. Zoete, *Commun. Chem.*, 2024, **7**, 105.
- 12 J. C. Wang, P. Y. Chu, C. M. Chen and J. H. Lin, *Nucleic Acids Res.*, 2012, **40**, W393–W399.
- 13 Y. C. Martin, J. L. Kofron and L. M. Traphagen, *J. Med. Chem.*, 2002, **45**, 4350–4358.
- 14 K. Y. Ji, C. Liu, Z. Q. Liu, Y. F. Deng, T. J. Hou and D. S. Cao, *Briefings Bioinf.*, 2023, **24**, 1–15.
- 15 A. Daina, O. Michielin and V. Zoete, *Nucleic Acids Res.*, 2019, **47**, W357–W364.
- 16 F. Shaikh, H. K. Tai, N. Desai and S. W. I. Siu, *J. Cheminf.*, 2021, **13**, 44.
- 17 X. Liu, S. Ouyang, B. Yu, Y. Liu, K. Huang, J. Gong, S. Zheng, Z. Li, H. Li and H. Jiang, *Nucleic Acids Res.*, 2010, **38**, W609–W614.
- 18 B. Bhattacharjee and J. Chatterjee, *Asian Pac. J. Cancer Prev.*, 2013, **14**, 3735–3742.
- 19 S. M. Ge, D. L. Zhan, S. H. Zhang, L. Q. Song and W. W. Han, *Am. J. Transl. Res.*, 2016, **8**, 5187–5198.
- 20 H. Li, Z. Gao, L. Kang, H. Zhang, K. Yang, K. Yu, X. Luo, W. Zhu, K. Chen, J. Shen, X. Wang and H. Jiang, *Nucleic Acids Res.*, 2006, **34**, W219–W224.
- 21 X. Chen, C. Y. Ung and Y. Chen, *Nat. Prod. Rep.*, 2003, **20**, 432–444.
- 22 F. Wang, F.-X. Wu, C.-Z. Li, C.-Y. Jia, S.-W. Su, G.-F. Hao and G.-F. Yang, *J. Cheminf.*, 2019, **11**, 73.
- 23 X. Xu, M. Huang and X. Zou, *Biophys. Rep.*, 2018, **4**, 1–16.
- 24 J. Li, J. Zhang, R. Guo, J. Dai, Z. Niu, Y. Wang, T. Wang, X. Jiang and W. Hu, *Eur. J. Med. Chem.*, 2025, **285**, 117269.
- 25 M. K. Khan, M. Raza, M. Shahbaz, I. Hussain, M. F. Khan, Z. Xie, S. S. A. Shah, A. K. Tareen, Z. Bashir and K. Khan, *Front. Chem.*, 2024, **12**, 1408740.
- 26 C. Hasselgren and T. I. Oprea, *Annu. Rev. Pharmacol. Toxicol.*, 2024, **64**, 527–550.
- 27 M. Astigarraga, A. Sánchez-Ruiz and G. Colmenarejo, *Artif. Intell. Life Sci.*, 2025, **7**, 100127.
- 28 S. D'Souza, K. V. Prema and S. Balaji, *Drug Discovery Today*, 2020, **25**, 748–756.
- 29 P. Willett, *Annu. Rev. Inf. Sci. Technol.*, 2009, **43**, 3–71.
- 30 G. Maggiora, M. Vogt, D. Stumpfe and J. Bajorath, *J. Med. Chem.*, 2014, **57**, 3186–3204.
- 31 P. Willett, J. M. Barnard and G. M. Downs, *J. Chem. Inf. Comput. Sci.*, 1998, **38**, 983–996.
- 32 N. Mathai and J. Kirchmair, *Int. J. Mol. Sci.*, 2020, **21**, 3585.
- 33 A. Peón, C. C. Dang and P. J. Ballester, *Front. Chem.*, 2016, **4**, 15.
- 34 X. Liu, Y. Xu, S. Li, Y. Wang, J. Peng, C. Luo, X. Luo, M. Zheng, K. Chen and H. Jiang, *J. Cheminf.*, 2014, **6**, 33.
- 35 S. Struckmann, M. Ernst, S. Fischer, N. Mah, G. Fuellen and S. Möller, *Briefings Bioinf.*, 2021, **22**, 1–8.
- 36 P. Willett, *Methods Mol. Biol.*, 2011, **672**, 133–158.
- 37 P. Baldi and R. Nasr, *J. Chem. Inf. Model.*, 2010, **50**, 1205–1222.
- 38 Y.-F. Shi, Z.-X. Yang, S. Ma, P.-L. Kang, C. Shang, P. Hu and Z.-P. Liu, *Engineering*, 2023, **27**, 70–83.
- 39 K. López-Pérez, J. F. Avellaneda-Tamayo, L. Chen, E. López-López, K. E. Juárez-Mercado, J. L. Medina-Franco and R. A. Miranda-Quintana, *Artif. Intell. Chem.*, 2024, **2**, 100077.
- 40 A. Paul and M. Radhakrishnan, *Trends Food Sci. Technol.*, 2020, **105**, 273–283.
- 41 M. Mete, U. U. Unsal, I. Aydemir, K. P. Sönmez and I. M. Tuglu, *Anti-Cancer Agents Med. Chem.*, 2019, **19**, 1120–1131.
- 42 G. F. P. Tiwari, R. B. Singh, F. Mehdi, W. Al-Awaida, N. Hadi, A. Mehdi, M. H. Shahrajabian, M. Khatibi, S. Omidvar and S. S. Zadeb, in *Functional Foods and Nutraceuticals in Metabolic and Non-Communicable Diseases*, ed. R. B. S. S. W. A. Isaza, Academic Press, 2022, pp. 121–135.
- 43 P. Aruna, D. Venkataramanamma, A. K. Singh and R. P. Singh, *Compr. Rev. Food Sci. Food Saf.*, 2016, **15**, 16–27.
- 44 M. E. Grossmann, N. K. Mizuno, T. Schuster and M. P. Cleary, *Int. J. Oncol.*, 2010, **36**, 421–426.
- 45 Y. Khajebishak, L. Payahoo, M. Alivand and B. Alipour, *J. Cell. Physiol.*, 2019, **234**, 2112–2120.
- 46 M. A. Shabbir, M. R. Khan, M. Saeed, I. Pasha, A. A. Khalil and N. Siraj, *Lipids Health Dis.*, 2017, **16**, 99.
- 47 M. T. Boroushaki, H. Mollazadeh and A. R. Afshari, *Int. J. Pharm. Sci. Res.*, 2016, **7**, 430.
- 48 M. Pirzadeh, N. Caporaso, A. Rauf, M. A. Shariati, Z. Yessimbekov, M. U. Khan, M. Imran and M. S. Mubarak, *Crit. Rev. Food Sci. Nutr.*, 2021, **61**, 982–999.
- 49 C. M. Guerra-Vázquez, M. Martínez-Ávila, D. Guajardo-Flores and M. Antunes-Ricardo, *Foods*, 2022, **11**, 252.
- 50 S. S. Anusree, V. M. Nisha, A. Priyanka and K. G. Raghu, *Mol. Cell. Endocrinol.*, 2015, **413**, 120–128.
- 51 E. P. Lansky, G. Harrison, P. Froom and W. G. Jiang, *Invest. New Drugs*, 2005, **23**, 121–122.
- 52 P. Kandylis and E. Kokkinomagoulos, *Foods*, 2020, **9**, 122.
- 53 S. Granados-Principal, J. L. Quiles, C. L. Ramirez-Tortosa, P. Sanchez-Rovira and M. C. Ramirez-Tortosa, *Nutr. Rev.*, 2010, **68**, 191–206.
- 54 J. L. Quiles, M. C. Ramirez-Tortosa and P. Yaqoob, *Olive oil and health*, Cabi, 2006.
- 55 M. Robles-Almazan, M. Pulido-Moran, J. Moreno-Fernandez, C. Ramirez-Tortosa, C. Rodriguez-Garcia, J. L. Quiles and M. Ramirez-Tortosa, *Food Res. Int.*, 2018, **105**, 654–667.
- 56 R. Fabiani, A. De Bartolomeo, P. Rosignoli, M. Servili, G. F. Montedoro and G. Morozzi, *Eur. J. Cancer Prev.*, 2002, **11**, 351–358.
- 57 J. Han, T. P. Talorete, P. Yamada and H. Isoda, *Cytotechnology*, 2009, **59**, 45–53.
- 58 M. Bertelli, A. K. Kiani, S. Paolacci, E. Manara, D. Kurti, K. Dhuli, V. Bushati, J. Miertus, D. Pangallo, M. Baglivo, T. Beccari and S. Michelini, *J. Biotechnol.*, 2020, **309**, 29–33.
- 59 R. Bernini, F. Crisante, N. Merendino, R. Molinari, M. C. Soldatelli and F. Velotti, *Eur. J. Med. Chem.*, 2011, **46**, 439–446.
- 60 K. Todoerti, M. E. Gallo Cantafio, M. Oliverio, G. Juli, C. Rocca, R. Citraro, P. Tassone, A. Procopio, G. De Sarro,



- A. Neri, G. Viglietto and N. Amodio, *Int. J. Mol. Sci.*, 2021, **22**, 11639.
- 61 E. Belmonte-Reche, M. Martínez-García, P. Peñalver, V. Gómez-Pérez, R. Lucas, F. Gamarro, J. M. Pérez-Victoria and J. C. Morales, *Eur. J. Med. Chem.*, 2016, **119**, 132–140.
- 62 O. Cruz-López, E. Díaz-de-Cerio, B. Rubio-Ruiz, J. M. Espejo-Román, P. Peñalver, J. C. Morales, M. F. Caboni, A. Conejo-García and V. Verardo, *J. Funct. Foods*, 2024, **117**, 106249.
- 63 O. Rådmark, O. Werz, D. Steinhilber and B. Samuelsson, *Biochim. Biophys. Acta, Mol. Cell Biol. Lipids*, 2015, **1851**, 331–339.
- 64 H. Kuhn, M. Walther and R. J. Kuban, *Prostaglandins Other Lipid Mediators*, 2002, **68–69**, 263–290.
- 65 S. Nakashima, *J. Biochem.*, 2002, **132**, 669–675.
- 66 K. L. Houseknecht, B. M. Cole and P. J. Steele, *Domest. Anim. Endocrinol.*, 2002, **22**, 1–23.
- 67 H. P. Koeffler, *Clin. Cancer Res.*, 2003, **9**, 1–9.
- 68 M. Gurusamy, D. Tischner, J. Shao, S. Klatt, S. Zukunft, R. Bonnavion, S. Günther, K. Siebenbrodt, R.-I. Kestner, T. Kuhlmann, I. Fleming, S. Offermanns and N. Wettschureck, *Nat. Commun.*, 2021, **12**, 6798.
- 69 M. P. Abbracchio and G. Burnstock, *Pharmacol. Ther.*, 1994, **64**, 445–475.
- 70 Q. Li, Y. Li, C. Lei, Y. Tan and G. Yi, *Clin. Chim. Acta*, 2021, **519**, 32–39.
- 71 S. Bevan, T. Quallo and D. A. Andersson, *Handbook of Experimental Pharmacology*, Springer, Berlin Heidelberg, 2014, pp. 207–245, DOI: [10.1007/978-3-642-54215-2\\_9](https://doi.org/10.1007/978-3-642-54215-2_9).
- 72 R. G. Pertwee, *Int. J. Obes.*, 2006, **30**, S13–S18.
- 73 G. Sutendra and E. D. Michelakis, *Front. Oncol.*, 2013, **3**, 38.
- 74 B. Nilius, G. Owsianik, T. Voets and J. A. Peters, *Physiol. Rev.*, 2007, **87**, 165–217.
- 75 K. A. Jacobson and Z.-G. Gao, *Nat. Rev. Drug Discovery*, 2006, **5**, 247–264.
- 76 H.-U. Demuth, C. H. S. McIntosh and R. A. Pederson, *Biochim. Biophys. Acta, Proteins Proteomics*, 2005, **1751**, 33–44.
- 77 N. K. Tonks, *Nat. Rev. Mol. Cell Biol.*, 2006, **7**, 833–846.

