

Cite this: *Chem. Sci.*, 2019, 10, 620

All publication charges for this article have been paid for by the Royal Society of Chemistry

# Folding of unstructured peptoids and formation of hetero-bimetallic peptoid complexes upon side-chain-to-metal coordination†

Maria Baskin,<sup>a</sup> Hui Zhu,<sup>b</sup> Zheng-Wang Qu,<sup>b</sup> Jordan H. Chill,<sup>c</sup> Stefan Grimme <sup>b</sup> and Galia Maayan <sup>\*a</sup>

Helices are key structural features in biopolymers, enabling a variety of biological functions. Mimicking these secondary structure motifs has wide potential in the development of biomimetic materials. Peptoids, *N*-substituted glycine oligomers, are an important class of peptide mimics that can adopt polyproline type helices if the majority of their sequence consists of chiral bulky pendent groups. Such side-chains are structure inducers but they have no functional value. We present here the inclusion of several metal-binding groups in one peptoid oligomer as a new platform towards the development of functional helical peptoids. Thus, we describe the coordination of two metal ions to unstructured peptoids incorporating four 8-hydroxyquinoline (HQ) ligands at fixed positions as two (HQ, HQ) metal binding sites, and a mixture of chiral benzyl and alkyl substituents in varied positions along the peptoid backbone. For the first time, we demonstrate by circular dichroism spectroscopy, solution NMR techniques and high-level DFT calculations that some of these unstructured peptoids can fold upon metal binding to form helical structures. Replacing one HQ ligand with a terpyridine (Terpy) ligand resulted in unique sequences that can selectively coordinate Cu<sup>2+</sup> to the (Terpy, HQ) and Zn<sup>2+</sup> (or Co<sup>2+</sup>) to the (HQ, HQ) sites from a solution mixture containing Cu<sup>2+</sup> and Zn<sup>2+</sup> (or Co<sup>2+</sup>) ions. Interestingly, the binding of Cu<sup>2+</sup> to the (Terpy, HQ) site in one of these peptoids can initiate a conformational change that in turn facilitates the coordination of Zn<sup>2+</sup> (or Co<sup>2+</sup>) ions to the (HQ, HQ) site, demonstrating a unique example of positive allosteric cooperativity in peptide mimics.

Received 14th August 2018  
Accepted 16th October 2018

DOI: 10.1039/c8sc03616k

rsc.li/chemical-science

## Introduction

The remarkable efficiency and selectivity of biopolymers in carrying out valuable functions such as molecular recognition, information storage and catalysis, stem from the ability of their polypeptide backbone to adopt well-defined three-dimensional structures. The folding of biopolymers can be controlled by a variety of interactions including hydrogen bonding, metal–ligand interactions, and solvophobic effects.<sup>1</sup> Among those, metal–ligand interactions are particularly interesting because metal ions are key elements not only in the structure but also in the function of biopolymers, being employed in tasks spanning from regulation to catalysis. In addition, there is a direct relationship between folding and metal coordination; while some biopolymers fold upon metal binding, others can only bind

metal ions in their folded state.<sup>1</sup> As a consequence, biopolymers exhibit high affinity and especially high selectivity towards specific metal ions that are required for their utility. Notably, many metalloproteins found in nature have multiple coordination sites suitable for the binding of at least two different metal ions, each at a distinct site, thus enabling cooperative and challenging catalytic tasks. Therefore, an important goal in the design of metal-binding proteins, peptides and peptide mimics is to generate structures that selectively bind different metals in distinct sites.<sup>2</sup> The coordination of the metal ions Cu and Zn is especially intriguing because these metals, being the two most abundant trace elements in biological and ecological systems, play central roles in the structure and function of proteins and are both essential components in many enzymes, *e.g.* the zinc–copper superoxide dismutase.<sup>3</sup> Mimicking such hetero bimetallic motifs using synthetic oligomers that can also fold upon binding and exhibit selective recognition of each metal ion might lead to unique functional compounds in which each metal ion plays a distinct role in their overall activity.

In recent years, chemists have been starting to explore possibilities to imitate these unique recognition properties, mostly by developing biomimetic foldamers<sup>4</sup> capable of binding metal ions.<sup>5–7</sup> Peptoids, *N*-substituted glycine oligomers, are an

<sup>a</sup>Schulich Faculty of Chemistry, Technion – Israel Institute of Technology, Technion City, Haifa 32000, Israel. E-mail: gm92@technion.ac.il

<sup>b</sup>Mulliken Center for Theoretical Chemistry, Rheinische Friedrich-Wilhelms-Universität Bonn, Berlingstrasse 4, 53115 Bonn, Germany

<sup>c</sup>Department of Chemistry, Bar-Ilan University, Ramat Gan 52900, Israel

† Electronic supplementary information (ESI) available. See DOI: 10.1039/c8sc03616k



important class of peptide mimics capable of forming well-defined secondary structures,<sup>8</sup> with demonstrated biological and chemical applications including drug development,<sup>9</sup> catalysis<sup>10</sup> and selective recognition of metal ions.<sup>11</sup> Peptoids can be synthesized efficiently using the solid phase sub-monomer method, which utilizes primary amines as synthons.<sup>12</sup> This method enables the facile incorporation of a wide variety of side chains, resulting in highly versatile sequences, with the potential to include various functional groups at specified *N*-positions along the peptoid spine.<sup>13</sup> Thus, several metal-binding ligands were incorporated within the peptoid sequences, leading to the formation of metallopeptoids.<sup>14</sup> In the absence of hydrogen bonding, the formation of peptoid helices requires that at least two thirds of the peptoid side chains are chiral and bulky. Such sequences form stable folded structures, which resemble polyproline type helices (PP-I and PP-II).<sup>15</sup> Although this approach is well established in peptoid chemistry, it only enables the production of very specific structures, dramatically limiting the sequence and functional diversity of peptoid helices, which currently, can only be generated from a few distinct side chains out of the numerous ones that exist. Moreover, these helix-inducing side chains only serve a structural purpose, and have no functional contribution to the peptoids. Therefore, it will be beneficial to develop alternative platforms for the creation of peptoid helices that increase their diversity on one hand, while providing some added functional value on the other hand. This may be performed by metal coordination, which proved efficient in the case of stabilization of peptide helices.<sup>16</sup> Although metal binding was shown to increase the conformational order of helical peptoids,<sup>14b,17</sup> the folding of unstructured peptoids upon metal coordination was not yet achieved.<sup>14j</sup> Moreover, there is currently one example of a peptoid dodecamer that forms homobimetallic metallopeptoids,<sup>14j</sup> but selective recognition of two different metal ions by one oligomer to form heterobimetallic metallopeptoid (or any other metallo-peptidomimetic) complexes was not demonstrated.

To accomplish these challenging tasks, we describe here the design, synthesis and characterization of four unstructured peptoid dodecamers containing a combination of chiral-bulky and chiral-small substituents and two metal binding sites based on four 8-hydroxyquinoline (HQ) side-chain ligands. We demonstrate for the first time that the binding of Cu<sup>2+</sup>, Zn<sup>2+</sup> and Co<sup>2+</sup> ions to un-structured peptoids can induce the formation of peptoid helices as evidenced by circular dichroism (CD) and NMR spectra, and using high-level DFT calculations. Due to the large size and high complexity of such metallopeptoids, both their experimental characterization and DFT analysis in solution and in the solid-state are highly challenging. We further show that two of these peptoids, modified by replacing one HQ with a terpyridine (Terpy) ligand, can selectively bind Cu<sup>2+</sup> ions to the (Terpy, HQ) site and Zn<sup>2+</sup> (or Co<sup>2+</sup>) to the other (HQ, HQ) site and form unique heterobimetallic metallopeptoids. Finally, we discovered that one of these peptoids can already fold upon the first and selective coordination of Cu<sup>2+</sup> to the (Terpy, HQ) site, and that this event facilitates the binding of Zn<sup>2+</sup> (or Co<sup>2+</sup>) ions to the second (HQ, HQ) site, presenting the first example of positive allosteric cooperativity in metallopeptoids.

## Results and discussion

### Rational design of unstructured peptoids with two (HQ, HQ) metal binding sites

It was previously suggested that both the overall number and the position of the chiral (*S*)-(-)-1-phenylethylamine (*N*spe) side-chains, especially their presence at the *N*- and *C*-termini as well as next to the *N*-terminus, are important for deriving peptoid folding.<sup>17,18</sup> Thus, we initially designed a peptoid dodecamer that has two *N*spe groups at the *N*- and *C*-termini, four HQ ligands at the 2<sup>nd</sup> and 5<sup>th</sup> (site 1) as well as 7<sup>th</sup> and 10<sup>th</sup> (site 2) side-chain positions (*i* and *i* + 3 for each HQ pair as potential metal binding sites) and six *S*-methoxy-propylamine (*N*smp) groups at the other side-chain positions along the peptoid sequence (**12P1**, Fig. 1). This design relied on our previous observation that (a) sequences mainly composed of *N*smp side-chain groups lead to unstructured peptoids<sup>14j</sup> and (b) the cooperative binding of metal ions to two ligands is much stronger at the *i* and *i* + 3 positions (such as sites 1 and 2) than at the *i* and *i* + 2 positions (here 5<sup>th</sup> and 7<sup>th</sup>, site 3).<sup>11a</sup> We therefore anticipated that this peptoid will be unstructured but the coordination of the two metal ions (one at each site) might lead to a significant increase in its conformational order and result in a helical structure. Moreover, we decided to synthesize peptoid dodecamers **12P2** and **12P3**, in which one *N*spe group is located at the position next to the *N*-terminus and the other at the *C*- or *N*-terminus, respectively (Fig. 1). The three peptoids were synthesized on a solid support, cleaved at the end of the synthesis and purified by high performance liquid chromatography (HPLC, >95%). Their molecular weights measured by electrospray mass spectrometry (ESI-MS) were consistent with the expected masses (see ESI<sup>†</sup>).

### Characterization of the metallopeptoids formed upon metal coordination

Metal-free peptoid **12P1** exhibits absorption bands near  $\lambda = 245$  nm in 4 : 1 MeOH : H<sub>2</sub>O solution. Titration with Cu<sup>2+</sup> acetate led to the appearance of a new absorption band at  $\lambda = 264$  nm, which corresponds to the formation of a peptoid-copper complex (Fig. 2a). In order to determine the stoichiometry of this complex we conducted a Job plot experiment by keeping the total molar concentrations of Cu<sup>2+</sup> and of **12P1** constant at 7  $\mu$ M and varying their relative proportions (mole fraction). The absorbance that is proportional to complex formation was plotted against the mole fraction and from the intersection point the peptoid-to-metal stoichiometry ratio was determined to be 2.06,<sup>19</sup> demonstrating the formation of the 1 : 2 peptoid:metal complex (Fig. 2a, inset). UV-Vis titration experiments of **12P1** were further conducted with Zn<sup>2+</sup> and with Co<sup>2+</sup> ions and from the peptoid-to-metal ratio plot a stoichiometry of 1 : 2 was confirmed. The formation of intramolecular Cu<sup>2+</sup>, Zn<sup>2+</sup> and Co<sup>2+</sup> complexes was further corroborated by electrospray mass spectrometry (ESI-MS). Notably, no evidence for the formation of higher order complexes (*e.g.* 2 : 4 complexes) was detected. The MS-MS techniques further supported our assumption that





Fig. 1 Chemical sequences of oligomers 12P1–12P3.

metal binding occurs in sites 1 and 2 (see ESI<sup>†</sup>). Similar UV-Vis titration spectra were obtained upon the addition of the metal ions  $\text{Cu}^{2+}$ ,  $\text{Zn}^{2+}$  and  $\text{Co}^{2+}$  to **12P2** and **12P3** (see ESI<sup>†</sup>). Based on the peptoid-to-metal ratio plots, the stoichiometry of these metallopeptoids was shown to also be 1 : 2, as was further verified by their ESI-MS analysis in solution (see ESI<sup>†</sup>). Overall, the spectroscopic data demonstrate the formation of homobimetallic metallopeptoids, in which the metal ions are bound in sites 1 and 2 *via* intramolecular chelation.

In order to gain some more information about the structure of the peptoid–copper complexes, the X-band EPR spectra of the powdered samples were measured at room temperature (Fig. S2<sup>†</sup>). In all cases, the EPR signals clearly indicated the presence of  $\text{Cu}^{2+}$  ions, and the Hamiltonian parameters obtained from the spectra are shown in Table S3<sup>†</sup>. Interestingly, all the spectra exhibit a broadening of the EPR signals, which is due to an exchange interaction between two  $\text{Cu}^{2+}$  ions located within a distance of less than 1.5 nm.<sup>20</sup> A representative EPR



Fig. 2 (a) UV-Vis titration (8.5  $\mu\text{M}$ ) and a Job plot of **12P1** (7  $\mu\text{M}$ ) with  $\text{Cu}^{2+}$  in 4 : 1 MeOH :  $\text{H}_2\text{O}$ . (b) Room temperature X-band EPR spectrum of the copper–peptoid copper complex (**12P1**) $\text{Cu}_2$  (blue line) in solid state and its simulated spectrum (red line). Reference – TEMPO (marked by \*),  $g = 2.0058$ .



spectrum of (12P1)Cu<sub>2</sub> is depicted in Fig. 2b. Based on calculated molecular models and EPR studies, it was previously suggested that the *trans*-planar configuration of Cu(hydroxyquinolate)<sub>2</sub> is not possible in the intramolecular Cu<sup>2+</sup>(HQ<sub>2</sub> peptoid) complexes due to steric hindrance from the peptoid backbone that should result in a pseudotetrahedral geometry.<sup>14b,17</sup> The values of the EPR parameters of (12P1)Cu<sub>2</sub>, (12P2)Cu<sub>2</sub> and (12P3)Cu<sub>2</sub> ( $g_{\parallel} = 2.276, 2.279$  and  $2.275$ ,  $g_{\perp} = 2.082, 2.084$  and  $2.080$  and  $A_{\parallel} = 149, 148$  and  $147$  G, respectively) are similar to those measured for other Cu<sup>2+</sup>(HQ<sub>2</sub> peptoid) complexes, implying also here pseudotetrahedral coordination geometries.

### Secondary structure of free and metal-coordinated peptoids: CD spectroscopy

Peptoids having only *N*spe or (*R*)-*N*-(1-phenylethyl)glycine (*N*rpe) side-chains (alpha-methyl-benzyl peptoids), were shown to generally adopt PP-I helices with three residues per turn,<sup>15</sup> with a minor population of terminal *trans*-amide bonds.<sup>15c</sup> Typical CD spectra of helical alpha-methyl-benzyl peptoids

measured in organic solvents exhibit double minima near 200 and 220 nm due to the mixed population of the *cis*- and *trans*-amide bonds.<sup>15c</sup> The peptoid 12P1 exhibits only an intense minimum near 195 nm (without a minimum near 220 nm) similar to the CD spectra of a random coil polypeptide, indicating that the peptoid is unstructured in solution (Fig. 3a and b, blue line). The coordination of the Cu<sup>2+</sup>, Zn<sup>2+</sup> or Co<sup>2+</sup> ions to the free peptoid 12P1 led to an increase in the absorption band near 220 nm as well as a slight decrease in the band near 195 nm, resulting in a double minima typical for helical alpha-methyl-benzyl peptoids (Fig. 3a and b). We also tested the thermal stability of the (12P1)Cu<sub>2</sub> complex by recording the CD spectra between 20 °C and 70 °C in 4 : 1 MeOH : H<sub>2</sub>O solution. Almost no change in the intensity of the absorbance bands was observed upon heating, indicating that the metallopeptoid structure is quite stable in solution (Fig. S28†). In addition to the spectral changes observed in the 190–230 nm region, new CD bands also appeared between 240 and 300 nm due to the HQ  $\pi$ - $\pi^*$  transitions. The CD spectra in this region exhibited



Fig. 3 CD spectra of the peptoid oligomers 12P1 (a and b) 12P2 (c and d) and 12P3 (e and f) and their metal complexes measured at the concentration of 100  $\mu$ M in 4 : 1 MeOH : H<sub>2</sub>O solution.



exciton couplets caused by the dipole–dipole interaction between two HQ chromophores. These exciton couplets indicate that chiral induction from the peptoid side-chains to the achiral HQ ligand eventually results in chiral metal complexes.<sup>14b,j,k,17,21</sup> To evaluate whether both metal binding sites are crucial for the folding of **12P1** upon the binding of (two) metal ions, we have synthesized two control dodecamer peptoids **12P1a** and **12P1b** bearing only one (HQ, HQ) binding site at sites 1 and 2, respectively. The CD spectra of **12P1a** and **12P1b** displayed only one intense minimum near 195 nm, which was not changed upon metal binding to both peptoids (see ESI†), suggesting that both metal binding sites are essential for secondary structure induction upon metal coordination.

The CD spectra of free **12P2** and its metal complexes exhibited trends similar to those of **12P1**, indicating again metal-coordination induced peptoid folding into helical structures (Fig. 3c and d). The CD spectrum of the free peptoid **12P3** also displayed an intense minimum near 195 nm (Fig. 3e and f, blue line). However, upon the addition of  $\text{Cu}^{2+}$ ,  $\text{Zn}^{2+}$  or  $\text{Co}^{2+}$  ions, no new CD bands were detected in the region between 190 and 240 nm (Fig. 3e and f), suggesting that the peptoid **12P3**, which lacks the *Nspe* group at the C-terminus, does not fold into helical structures upon metal binding. These results demonstrate that the *Nspe* group at the C-terminus of the alpha-methyl-benzyl peptoids plays a crucial role in the stabilization of the helical secondary structure.<sup>15b</sup> Following these results we synthesized another dodecamer peptoid **12P4** that contains only one *Nspe* group at the C-terminus (Fig. 4a). The new peptoid **12P4** was synthesized, purified and analyzed by UV-Vis titrations with  $\text{Cu}^{2+}$ ,  $\text{Zn}^{2+}$  and  $\text{Co}^{2+}$  to verify 2 : 1 coordination stoichiometry, which was further confirmed by ESI-MS (see ESI†). CD measurements of **12P4** before and after the addition of metal ions revealed the formation of double minima lower in intensity but similar to the ones formed upon metal binding to **12P1** and **12P2** (Fig. 4b). This result is remarkable because it confirms that a folding process can be initiated by metal coordination to unstructured peptoids bearing only one chiral bulky group at the C-terminus.

#### DFT calculations and assignment for the CD spectra of free and metal-coordinated peptoids

Overall, our experimental CD results suggest that the unstructured peptoids **12P1** and **12P2** could fold into helical structures

while **12P3** remained unstructured upon metal binding. However, obtaining single crystals of the metal-coordinated peptoids **12P1** and **12P2** suitable for X-ray analysis was still not possible. Therefore we sought to perform some high-level DFT calculations to support our experimental findings. Previous molecular mechanics calculations showed that the homo-octamer (*Nspe*)<sub>8</sub> should form a right-handed PP-I helix with the *cis* amide bonds and with backbone dihedrals ( $\omega$ ,  $\phi$ ,  $\psi$ ) around ( $0^\circ$ ,  $-75^\circ$ ,  $170^\circ$ ),<sup>22</sup> leading to the typical double-minima near 200 and 220 nm observed in the experimental CD spectrum. No theoretical calculations have been done before for *Nsmp*-containing peptoids and other higher peptoid oligomers. Currently, no X-ray structure of any *Nsmp*-containing peptoids has been reported. Thus, detailed DFT calculations were performed to support our experimental results. Both right-handed *cis* PP-I and left-handed *trans* PP-II helices with the respective backbone ( $\omega$ ,  $\phi$ ,  $\psi$ ) dihedrals around ( $0^\circ$ ,  $-75^\circ$ ,  $170^\circ$ ) and ( $170^\circ$ ,  $-75^\circ$ ,  $180^\circ$ ) of **12P1**, (**12P1**)Zn<sub>2</sub>, **12P3** and (**12P3**)Zn<sub>2</sub> are constructed for further conformational searching of the lowest energy conformations in our DFT calculations. The complexes of the closed-shell  $\text{Zn}^{2+}$  ions are chosen in our DFT study to avoid more computational efforts required for the open-shell  $\text{Cu}^{2+}$  and  $\text{Co}^{2+}$  ions while similar peptoid conformations can be expected for all these ions. The DFT-optimized helical structures were used to calculate the UV-Vis and CD spectra for comparison with our experimental spectra to provide useful insights into the electronic assignment of spectral bands as well as the actual secondary structures observed in the experiment.

The recently developed GFN-xTB tight-binding method<sup>23</sup> as implemented in the xtb program<sup>24</sup> was used for efficient initial conformational searching in methanol solution employing the GBSA solvation model, followed by further DFT-refinement. The TURBOMOLE V7.0 suite of programs<sup>25</sup> was used for all DFT calculations. The prescreened peptoid structures were fully optimized at the TPSS-D3/def2-TZVP + COSMO (methanol) level of theory, which combines the TPSS meta-GGA density functional<sup>26</sup> with the BJ-damped DFT-D3 dispersion correction<sup>27</sup> and the large def2-TZVP AO basis set,<sup>28</sup> together with the COSMO (for methanol solvent: dielectric constant  $\epsilon_r = 32.6$ ,  $R_{\text{sol}} = 2.53$  Å) solvation model.<sup>29</sup> The density-fitting RI-J approach<sup>30</sup> was used to accelerate the geometry optimization and harmonic frequency calculations. Vibrational frequency analysis was used to identify the nature of the located stationary points and to

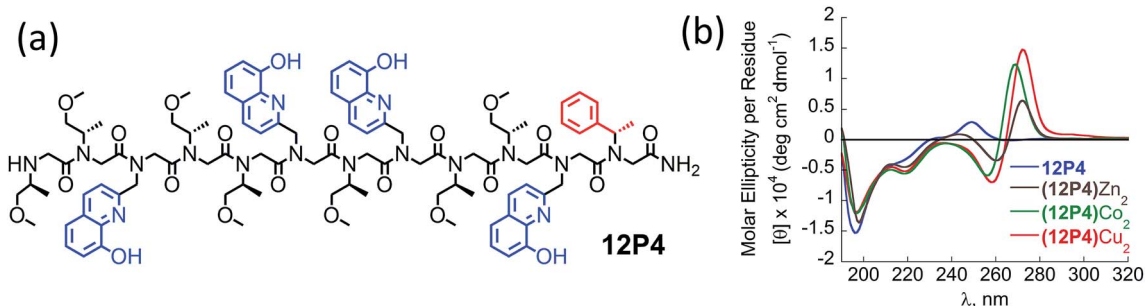


Fig. 4 (a) Chemical sequence of **12P4** and (b) CD spectra of **12P4** and its metal complexes measured at the concentration of 100  $\mu\text{M}$  in 4 : 1 MeOH : H<sub>2</sub>O solution.



provide thermal and free-energy corrections according to the modified ideal gas-rigid rotor-harmonic oscillator model.<sup>31</sup> The structures were characterized as true minima (with no imaginary frequency). The helical *cis* PP-I-like structures turned out to be at least 10 kcal mol<sup>-1</sup> more stable than the corresponding trans PP-II-like structures.

Fig. 5 shows the DFT-optimized *cis* PP-I-like structure of (12P1)Zn<sub>2</sub> and the structure of (12P3)Zn<sub>2</sub> for comparison (optimized structures of *cis* PP-I-like 12P1 and 12P3 as well as other trans PP-II-like structures can be found in the ESI†). The optimized (12P1)Zn<sub>2</sub> complex adopts a quasi-linear helical backbone with a rise of ~6 Å (roughly 3.3 residues) per turn with two right-handed side-chain Zn(HQ)<sub>2</sub> complexes, both found in a similar tetrahedral geometry between one central Zn<sup>2+</sup> ion and two deprotonated HQ ligands with typical ∠O–Zn–O, ∠N–Zn–N and ∠N–Zn–O bond angles of 129 ± 5°, 130 ± 3° and 84.9 ± 0.3°, respectively. In contrast, the optimized structure of (12P3)Zn<sub>2</sub> adopts a much less ordered backbone, with the respective side-chain Zn(HQ)<sub>2</sub> complex near the N- and C-terminus being more planar (∠N–Zn–N = 150°) and more pyramidal (∠N–Zn–O = 120°), respectively, consistent with the modified sites of one bulky *N*spe-substituents. In contrast, the corresponding *trans* PPII-like structures of both complexes, with a usual rise of ~9 Å (3 residues) per turn, adopt much more bent backbones that may be further deformed by the possible coordination of the amide carbonyl groups to side-chain Zn(HQ)<sub>2</sub> complexes (see ESI Fig. S80†). Without the support from side-chain Zn(HQ)<sub>2</sub> complexes, the free peptoids 12P1 and 12P3 are structurally much more flexible and can be found in many possible H-bonded (HB) conformations with the acidic OH groups of the side-chain HQ ligands as HB donors and the main-chain amide carbonyl and side-chain *N*smp groups as HB acceptors.

The sTDA program package<sup>32</sup> was used to efficiently compute the UV and CD spectra up to the excitation energies of 7.0 eV (~180 nm) according to the simplified time-dependent density functional theory (sTDDFT)<sup>33</sup> at the B3LYP/def2-TZVP + COSMO (methanol) level. About 400 excited electronic states are involved in the spectral range of up to 180 nm, making direct assignment almost impossible especially for high-energy bands below 230 nm. Clear electronic assignment was made using smaller model systems including the free HQ, Zn(HQ)<sub>2</sub> complex, tetramer peptoid with and without single Zn(HQ)<sub>2</sub> (p4c and ZnQ<sub>2</sub>c, respectively) truncated from the best *cis* PP-I structure of (12P1)Zn<sub>2</sub> (See ESI†). The experimental UV-vis spectra could be well reproduced by our DFT-calculations, which are insensitive to the detailed peptoid secondary structures. A more detailed analysis shows that the main-chain amide groups contribute only to the high-energy bands below 230 nm while the side-chain HQ (or Zn(HQ)<sub>2</sub>) groups dominate the lower-energy bands.

Fig. 6 shows the comparison between the experimental and calculated CD spectra of 12P1, (12P1)Zn<sub>2</sub>, 12P3 and (12P3)Zn<sub>2</sub>. In general, the CD signal near 380 nm is rather low and thus is not shown. Taking (12P1)Zn<sub>2</sub> as an example, the experimental positive and negative bands near 270 nm are well reproduced using our DFT calculations, which are due to the exciton couplet π → π\* transitions of the side-chain Zn(HQ)<sub>2</sub> groups, thus confirming the correct right-handed configuration of the Zn(HQ)<sub>2</sub> groups predicted in our DFT calculations (reversed sign expected for left-handed configuration). Such CD bands in 12P1 are blue-shifted to about 250 nm having much reduced intensities, with residual signals of the side-chains HQ induced by the local chiral peptoid structures. Similarly, the experimental negative double minima bands near 220 and 200 nm are reasonably reproduced using our DFT calculations, which are



Fig. 5 Comparison of the side and top views of (12P1)Zn<sub>2</sub> (a and b) and (12P3)Zn<sub>2</sub> (c and d) optimized at the TPSS-D3/def2-TZVP + COSMO (methanol) level, both assuming the right-handed *cis* PP-I helical structure. The main-chain C, N, O atoms and acidic H atoms (HQ hydroxyl and amide NH groups) are highlighted as grey, blue, red and white balls, respectively.





Fig. 6 A comparison between the sTD-BHLYP/def2-TZVP + COSMO computed (black lines) and experimental (red lines) CD spectra of (a) **12P1**, (b) **(12P1)Zn<sub>2</sub>**, (c) **12P3** and (d) **(12P3)Zn<sub>2</sub>**. The assignment of the bands to excited electronic states is based on smaller model systems of free HQ, Zn(HQ)<sub>2</sub>, p4c and truncated ZnQ<sub>2</sub>c molecules (see ESI†).

assigned to the  $n \rightarrow \pi^*$  and  $\pi \rightarrow \pi^*$  transitions of the amide groups of the right-handed PP-I secondary structure with some contributions from the  $\pi \rightarrow \pi^*$  transitions of the side-chain Zn(HQ)<sub>2</sub> groups. In this region, DFT calculations tend to overestimate the  $n \rightarrow \pi^*$  and  $\pi \rightarrow \pi^*$  transition energies of the amide groups by about 10 nm (or 0.17 eV) than the  $\pi \rightarrow \pi^*$  transitions of the side-chain ZnQ<sub>2</sub> groups. For the **(12P3)Zn<sub>2</sub>** complex, the well reproduced CD bands around 270 nm again suggest the formation of right-handed side-chain Zn(HQ)<sub>2</sub> complexes; however, the absence of negative bands around 220 nm (characteristic for right-handed *cis* PP-I) in the experiment strongly suggests that the regular PP-I secondary structure is not formed upon Zn<sup>2+</sup> coordination. Collectively, for the first time, clear electronic assignment to the experimental UV-Vis and CD spectra is postulated by high-level DFT calculations, providing strong evidence for both the detailed side-chain metal complexes and peptoid backbone secondary structures of large metallopeptoid complexes such as **(12P1)Zn<sub>2</sub>** in solution.

#### NMR analysis of peptoid folding induced by Zn<sup>2+</sup> coordination

The free **12P1**, **12P2**, **12P3** and **12P4** peptoids as well as their Zn<sup>2+</sup> complexes were further investigated by the <sup>1</sup>H-<sup>1</sup>H COSY 2D-NMR technique, which among the other 2D-NMR methods is most suitable for peptoid characterization in solution.<sup>34</sup> When compared to peptides, the peptoids characteristically

exhibit a multitude of distinct and slowly interchanging conformations in solution caused by the *cis-trans* interconversions at the backbone amides. As a result, rather than a single set of resonances the NMR spectrum of the peptoids will exhibit 'clusters' of cross-peaks in characteristic spectral regions, and these can be used to follow structural changes in peptoid conformation. This inherent conformational flexibility is also expected to dually frustrate attempts of structure determination using standard homonuclear TOCSY and NOESY spectra, due to the inefficient dipole-dipole magnetization transfer resulting in poor NOESY spectra, as well as the absence of any dominant structural species. However, the ensemble of the peptoid structures could still be characterized by following the typical shifts of the signal clusters. Thus, COSY and TOCSY remain as the preferred experiments; of these, the less complex COSY experiment (correlating only adjacent protons connected by <sup>3</sup>J coupling constants) has given us the best results in monitoring the conformational changes occurring in our peptoids.

Fig. 7 displays the COSY correlation map for **12P1** and **12P3**. Two notable regions are seen between the prochiral geminal protons in the glycine-like backbone (near the diagonal, between 3.5 and 4.7 ppm, Fig. 7a and b) and correlations between the methyl groups and various vicinal protons (1.0–1.7 ppm for the methyls, Fig. 7c and d, 4.0–6.0 ppm for the neighboring protons). Correlations of the latter region are generally divided into *N*smp (1.0–1.2 ppm) and *N*spe (1.5–





Fig. 7  $^1\text{H}$ - $^1\text{H}$  COSY 2D-NMR spectra (700 MHz) of the free peptoids **12P1** and **12P3** (black) and their corresponding (**12P1**)Zn<sub>2</sub> and (**12P3**)Zn<sub>2</sub> complexes (red) measured at 283 K at 4 mM concentration in CD<sub>3</sub>OD.

1.7 ppm) methyls, in agreement with the aliphatic or aromatic nature of the side chains, respectively. Previous studies<sup>33</sup> show that in both cases the downfield cluster corresponds to the *cis* confirmation of the peptoid bond, and the upfield cluster corresponds to the *trans* conformation. The third cluster in the *Nspe* region represents the terminal 'edge' *Nspe* group present in the peptoids, which, as expected for the secondary amine, resonates further upfield. Similar maps are shown for the peptoids **12P2** and **12P4** in the ESI.<sup>†</sup> The geminal proton region of **12P1** exhibits many well-resolved off-diagonal cross-peaks, which is an indication of a relatively rigid and structured backbone. However, the solution-phase structure of **12P1** could not be obtained by simulated annealing using distance restraints derived from key inter-residue NOEs, as previously done for several other peptoids,<sup>9f,34</sup> probably because of a mixture of differently populated conformations that would confound the NMR analysis. The geminal proton region for unstructured **12P3** exhibits less well-resolved off-diagonal cross-peaks and more diffuse signals, indicating a relatively flexible backbone, supporting the observations from the CD analysis.

Such correlation maps were then used to evaluate the structural changes induced by the present of Zn<sup>2+</sup>. Since Zn<sup>2+</sup> coordination occurs *via* the side-chain HQ ligands, the effects observed upon the geminal protons reflect an overall structural influence rather than a local electronic influence. Upon addition of Zn<sup>2+</sup> to **12P1** several of the geminal proton signals in the correlation map are shifted, indicating a conformational change in the peptoid backbone. In addition, the number of cross-peaks is reduced, suggesting a decrease in the conformational heterogeneity of the backbone. Also, the *Nspe* methyl

region exhibits an increase in spectral dispersion as well as resolution, once again indicating that **12P1** undergoes a rigidification in side-chain conformations (Fig. 7). In contrast, addition of Zn<sup>2+</sup> to **12P3** fails to exhibit such changes. Both the geminal proton and the methyl regions exhibit less shifts in peak positions and they remain relatively diffuse in nature, suggesting that the structural changes in the peptoid are minimal. A comparison of these results to those obtained for the other two peptoids **12P2** and **12P4** (see ESI<sup>†</sup>) shows that they are closer in behavior to **12P1**, although the structural changes are less pronounced.

Taken together, the experimental as well as the computational spectroscopic results provide strong evidence for the folding of the initially unstructured **12P1**, **12P2** and **12P4** upon metal binding assisted by a small amount of structure-directing side-chains (about 8–17% *Nspe* groups, much less than those reported at least 66%). Moreover, DFT calculations provide for the first time the detailed solution structure as well as clear assignment of UV-Vis and CD spectra of long linear peptoids and metallopeptoids.<sup>35</sup>

### From structure to function: rationally designed peptoids for the selective binding of two different metal ions

At this point we wanted to explore whether peptoids folding upon the coordination of one metal ion can lead to selective recognition of a second, different metal ion, and result in heterobimetallic metallopeptoid complexes. The peptoids **12P1**, **12P2**, **12P3** and **12P4** include four identical HQ ligands each, pre-organized into two similar binding sites, and thus



selectivity in metal binding to one site over the other is not likely to occur. We have previously found that the incorporation of one HQ and one 2,2':6',2''-terpyridine (Terpy) side-chain ligand located at the *i* and *i* + 3 positions within a helical peptoid leads to a strong and selective coordination of Cu<sup>2+</sup> ions from a mixture containing additional Zn<sup>2+</sup> and Co<sup>2+</sup> ions.<sup>11a,36</sup> Replacing the HQ groups at the 2<sup>nd</sup> position of **12P1**–**12P4** by a Terpy group should provide access to peptoids with two distinct intramolecular metal binding sites that can selectively bind different metal ions such as Cu<sup>2+</sup>, Co<sup>2+</sup> and Zn<sup>2+</sup> ions. To explore this possibility we decided to focus on the peptoids **12P1**, which exhibits the highest conformational change upon metal coordination, and **12P3**, which remains unstructured upon metal binding. Replacing one HQ side-chain with a Terpy side-chain in each peptoid leads to peptoids **12P5** and **12P6**, respectively (Fig. 8a and 9a).

Peptoids **12P5** and **12P6** were synthesized on a solid support, cleaved and purified; their identity was verified by ESI-MS. UV-Vis titration of **12P5** using a Cu<sup>2+</sup> solution was performed to follow the intensity changes at 261 and 316 nm that correspond to the absorbance of metal-bound HQ and Terpy ligands, respectively. A linear increase in the intensity of both bands was observed (Fig. 8b) until 1 equiv. of Cu<sup>2+</sup> ions was added; further addition of another 1 equiv. of Zn<sup>2+</sup> (or Co<sup>2+</sup>) ions led to a gradual intensity increase only for the band at 261 nm but not for the band at 316 nm. This clearly demonstrated that Cu<sup>2+</sup> ions are bound to the combined (Terpy, HQ) site at first, followed by Zn<sup>2+</sup> (or Co<sup>2+</sup>) binding to the other (HQ, HQ) site. The formation of the 2 : 1 metal : peptoid bimetallic complexes from **12P5** was further confirmed by ESI-MS analysis (see ESI†).

Moreover, the Hamiltonian parameters obtained from simulating the EPR spectra of (**12P5**)Cu, (**12P5**)CuCo and (**12P5**)CuZn revealed a Hamiltonian parameter  $A_{||}$  of 165 in all cases, consistent with the square pyramidal coordination geometry<sup>37</sup> expected for the combined coordination of one Terpy and one HQ ligands to Cu<sup>2+</sup> ions.<sup>11a,36</sup> To explore whether we can obtain the hetero-bimetallic complexes (**12P5**)CuZn (or (**12P5**)CuCo) by self-assembly, a solution of **12P5** was treated with a solution mixture containing 1 equiv. of Cu<sup>2+</sup> and 1 equiv. Zn<sup>2+</sup> (or Co<sup>2+</sup>). This led to the complete disappearance of the UV-Vis bands at 245 and 278 nm and the appearance of two new bands at 261 and 316 nm identical to those obtained from the sequential addition of the two metal ions, indicating selective binding of two different metal ions in distinct binding sites to form (**12P5**)CuZn (or (**12P5**)CuCo) *via* self-assembly from the solution mixture (Fig. S18 and S19†). Similar results were also found for **12P6**.

The CD spectra of both **12P5** and **12P6** exhibited an intense minimum at 200 nm and low intensity minimum (**12P5**) or no minimum at all (**12P6**) at 220 nm. Interestingly, after the addition of 1 equiv. of Cu<sup>2+</sup> ions to **12P5**, the intensity of the peak at 220 nm was increased, implying that the conformational order of the Cu-peptoid is higher (Fig. 8c). A further addition of 1 equiv. of Zn<sup>2+</sup> (or Co<sup>2+</sup>) did not significantly change the CD spectra, suggesting that the second metal binding has little effect on the peptoid secondary structure (Fig. S24†). The CD spectrum of **12P6**, on the other hand, did not change in the region of 200–220 nm upon the addition of metal ions (see ESI† and Fig. 9b), indicating that the conformational order of this peptoid is not affected by metal



Fig. 8 (a) Chemical sequence of the peptoid oligomer **12P5**. (b) A plot representing absorbance at 261 nm and 316 nm as a function of total equivalents of metal ions added from the UV-Vis titration of **12P5** with first 1 equiv. Cu<sup>2+</sup> followed by addition of Zn<sup>2+</sup>, at the concentration of 17 μM in 4 : 1 MeOH : H<sub>2</sub>O solution. (c) CD spectra of the peptoid **12P5** and (**12P5**)Cu complex, at the concentration of 100 μM in 4 : 1 MeOH : H<sub>2</sub>O solution.





Fig. 9 (a) Chemical sequence of the peptoid oligomers **12P6**. (b) CD spectra of the peptoid **12P6** and **(12P6)Cu** complex, 100  $\mu\text{M}$  in 4 : 1 MeOH : H<sub>2</sub>O. (c) A cartoon demonstrating positive allosteric cooperative binding to **(12P5)Cu**.

coordination. Based on these results we wanted to further explore whether the folding of **12P5** upon the first coordination of Cu<sup>2+</sup> ions to the (Teryp, HQ) binding site can facilitate the second coordination of Zn<sup>2+</sup> (or Co<sup>2+</sup>) ions to the (HQ, HQ) binding site of **(12P5)Cu**, compared with the unstructured **(12P6)Cu** complex, thus demonstrating positive allosteric cooperativity.

To this aim, we conducted a direct competition experiment between **(12P5)Cu** and **12P6Cu** on the binding of Zn<sup>2+</sup> (or Co<sup>2+</sup>).<sup>38</sup> Thus, a solution mixture of **(12P5)Cu** and **(12P6)Cu** (both 0.5 mM in MeOH : H<sub>2</sub>O 4 : 1) was treated with 1 equiv. of Zn<sup>2+</sup> (or Co<sup>2+</sup>) and analyzed by ESI-MS. The **(12P5)CuM** and **(12P6)CuM** (M = Zn<sup>2+</sup> or Co<sup>2+</sup>) show the same molecular weight but different peptoid sequence, and therefore could be analyzed by the MS-MS technique. The observed fragmentations in the mass spectra matched only those of **(12P5)CuZn** (or **(12P5)CuCo**), with no indication of those related to **(12P6)CuM** (Fig. S66–S69<sup>†</sup>). These results demonstrate that both Zn and Co are selectively bound to **(12P5)Cu** rather than to **(12P6)Cu**, suggesting that the conformational change that occurs only when Cu<sup>2+</sup> binds **12P5** facilitates the second binding event compared to the same binding event that takes place by the unstructured **(12P6)Cu**. As such, we propose that the structural change induced by the selective metal binding of Cu<sup>2+</sup> to **12P5** leads to its ability to perform a biomimetic function, *i.e.* positive allosteric cooperativity in the binding of Zn<sup>2+</sup> (or Co<sup>2+</sup>).

## Conclusions

This paper reports on two advances in peptidomimetic chemistry: (i) the ability of rationally designed unstructured peptoids to fold upon metal binding, and (ii) the ability of a peptoid

bearing two different metal-binding sites to bind one metal ion in one site, change its conformational order and demonstrate positive allosteric cooperative binding of a second metal ion in the other site. Metal-binding peptide mimics are an important class of biomimetic oligomers with demonstrated functionalities of selective recognition and catalysis; however, examples of metal-coordination driven folding and allosteric cooperativity of peptidomimetics are rare. Therefore, the demonstration that peptoids can perform these biomimetic tasks is a milestone in the development of functional complex structures from peptidomimetic scaffolds.

Currently, the stabilization of peptoid helices mainly relies on the incorporation of specific chiral bulky side chains. In this work, for the first time, our CD and NMR experimental data as well as DFT-predicted solution structures and spectral assignment confirmed the folding of unstructured peptoids upon metal coordination to two side-chain (HQ, HQ) metal binding sites. By replacing one HQ with a Teryp ligand we created two distinct metal binding sites within one peptoid. The selective coordination of one Cu<sup>2+</sup> ion to the (HQ, Teryp) binding site leads to the peptoid folding that in turn facilitates the second coordination of a Zn<sup>2+</sup> (or Co<sup>2+</sup>) ion to the (HQ, HQ) binding site. We showed that the affinity of the folded Cu-bound peptoid **(12P5)Cu** to Zn<sup>2+</sup> (or Co<sup>2+</sup>) is higher than that of less structured **(12P6)Cu** as evidenced by mass spectra analysis, suggesting a unique example of allosteric cooperativity in peptide mimics.

We believe that our findings introduce a new platform not only in peptoid folding, but also in the design of novel complex biomimetic structures based on bimetallic and hetero-bimetallic peptidomimetic composites. The observation that a synthetic oligomer can perform a complicated biomimetic



function such as positive allosteric cooperative metal binding can impact the design of novel functional foldamers.

## Conflicts of interest

There are no conflicts to declare.

## Acknowledgements

The research leading to these results has received funding from the European Union's - Seventh Framework Program (FP7/2007–2013) under grant agreement no. 333034-MC-MF STRC AND FCN. G. M. and M. B. thank Mrs Larisa Panz for her assistance with the various MS measurements and Dr Boris Tumanskii for his assistance with the EPR measurements. M. B. thanks the Schulich foundation and the Gutwirth foundation for her PhD fellowship. S. G., H. Z. and Z. W. Q. thank the DFG for financial support in the framework of the Leibniz price. J. C. acknowledges support of the Christians for Israel Chair for Medical Research.

## References

- 1 *Foldamers: Proteins Folding and Metal ions, Mechanisms, Biology and Disease*, ed. C. M. Gomes and P. Wittung-Stafshede Huc, CRC Press, Taylor & Francis group, FL, USA, 2011.
- 2 M. L. Zastrow and V. I. Pecoraro, *Coord. Chem. Rev.*, 2013, **257**, 2565–2588.
- 3 R. H. Holm, P. Kennepohl and I. Solomon, *Chem. Rev.*, 1996, **96**, 2239–2314.
- 4 (a) D. J. Hill, M. J. Mio, R. B. Prince, T. S. Hughes and J. S. Moore, *Chem. Rev.*, 2001, **101**, 3893–4012; (b) *Foldamers: Structure, Properties, and Applications*, ed. S. Hecht and I. Huc, Wiley-VCH, Weinheim, Germany, 2007; (c) S. H. Gellman, *Acc. Chem. Res.*, 1998, **31**, 173–180; (d) D. Seebach and J. Gardiner, *Acc. Chem. Res.*, 2008, **41**, 1366–1375; (e) M. Berg and A. Lützen, in *Structural aspects of helicates, Metallofoldamers. Supramolecular Architectures from Helicates to Biomimetics*, ed. G. Maayan and M. Albrecht, John Wiley & Sons, Ltd., 2013, ch. 4, p. 130. See also ref. 16–27 in this chapter.
- 5 Reviews: (a) G. Maayan, *Eur. J. Org. Chem.*, 2009, **33**, 5699–5710; (b) *Metallofoldamers. Supramolecular Architectures from Helicates to biomimetics*, ed. G. Maayan and M. Albrecht, John Wiley & Sons, Ltd, 2013.
- 6 (a) F. Zhang, S. Bai, G. P. A. Yap, V. Tarwade and J. M. Fox, *J. Am. Chem. Soc.*, 2005, **127**, 10590–10599; (b) Z. Dong Jr., R. J. Karpowicz, S. Bai, G. P. A. Yap and J. M. Fox, *J. Am. Chem. Soc.*, 2006, **128**, 14242–14243.
- 7 S. Tashiro, K. Matsuoka, A. Minoda and M. Shionoya, *Angew. Chem., Int. Ed.*, 2012, **51**, 13123–13127.
- 8 (a) K. T. Nam, S. A. Shelby, P. H. Choi, A. B. Marciel, R. Chen, L. Tan, T. K. Chu, R. A. Mesch, B.-C. Lee, M. D. Connolly, C. Kisielowski and R. N. Zuckermann, *Nat. Mater.*, 2010, **9**, 454–460; (b) J. A. Crapster, I. A. Guzei and H. E. Blackwell, *Angew. Chem., Int. Ed.*, 2013, **52**, 5079–5084; (c) R. V. Mannige, T. K. Haxton, C. Proulx, E. J. Robertson, A. Battigelli, G. L. Butterfoss, R. N. Zuckermann and S. Whitelam, *Nature*, 2015, **516**, 415–420; (d) J. S. Laursen, P. Harris, P. Fristrup and C. A. Olsen, *Nat. Commun.*, 2015, **6**, 7013; (e) S. J. Laursen, J. E. Andreasen and C. A. Olsen, *Acc. Chem. Res.*, 2015, **48**, 2696–2704; (f) B. C. Gorske, E. M. Mumford, C. G. Gerrity and I. Ko, *J. Am. Chem. Soc.*, 2017, **139**, 8070–8073; (g) O. Roy, G. Dumonteil, S. Faure, L. Jouffret, A. Kriznik and C. Taillefumier, *J. Am. Chem. Soc.*, 2017, **139**, 13533–13540.
- 9 (a) R. J. Simon, R. S. Kania, R. N. Zuckermann, V. D. Huebner, D. A. Jewell, S. Banville, S. Ng, L. Wang, S. Rosenberg and C. K. Marlowe, *Proc. Natl. Acad. Sci. U. S. A.*, 1992, **89**, 9367–9371; (b) J. A. Patch, K. Kirshenbaum, S. L. Seuryneck, R. N. Zuckermann and A. E. Barron, in *Drug Discovery*, Wiley-VCH, Weinheim, Germany, 2004, pp. 1–31; (c) R. N. Zuckermann and T. Kodadek, *Curr. Opin. Mol. Ther.*, 2009, **11**, 299–307; (d) M. T. Dohm, R. Kapoor and A. E. Barron, *Curr. Pharm. Des.*, 2011, **17**, 2732–2747; (e) K. H. A. Lau, *Biomater. Sci.*, 2014, **2**, 627–633; (f) A. S. Knight, E. Y. Zhou, M. B. Francis and R. N. Zuckermann, *Adv. Mater.*, 2015, **27**, 5665.
- 10 (a) R. Schettini, F. D. Riccardis, G. D. Sala and I. Izzo, *J. Org. Chem.*, 2016, **81**, 2494–2505; (b) K. J. Prathap and G. Maayan, *Chem. Commun.*, 2015, **51**, 11096–11099; (c) D. ChandraMohan, A. Sadhukha and G. Maayan, *J. Catal.*, 2017, **355**, 139–144; (d) G. Maayan, M. D. Ward and K. Kirshenbaum, *Proc. Natl. Acad. Sci. U. S. A.*, 2009, **106**, 13679–13684.
- 11 (a) M. Baskin and G. Maayan, *Chem. Sci.*, 2016, **7**, 2809–2820; (b) A. S. Knight, E. Y. Zhou, J. G. Pelton and M. B. Francis, *J. Am. Chem. Soc.*, 2013, **135**, 17488–17493; (c) A. S. Knight, E. Y. Zhou and M. B. Francis, *Chem. Sci.*, 2015, **6**, 4042–4048.
- 12 R. N. Zuckermann, J. M. Kerr, S. B. W. Ken and W. H. Moos, *J. Am. Chem. Soc.*, 1992, **114**, 10646–10647.
- 13 A. S. Culf and R. J. Ouellette, *Molecules*, 2010, **15**, 5282–5335.
- 14 (a) B. C. Lee, T. K. Chu, K. A. Dill and R. N. Zuckermann, *J. Am. Chem. Soc.*, 2008, **130**, 8847–8855; (b) G. Maayan, M. D. Ward and K. Kirshenbaum, *Chem. Commun.*, 2009, 56–58; (c) N. Maulucci, I. Izzo, G. Bifulco, A. Aliberti, C. De Cola, D. Comegna, C. Gaeta, A. Napolitano, C. Pizza, C. Tedesco, D. Flot and F. De Riccardis, *Chem. Commun.*, 2008, 3927–3929; (d) C. De Cola, S. Licen, D. Comegna, E. Cafaro, G. Bifulco, I. Izzo, P. Tecilla and F. De Riccardis, *Org. Biomol. Chem.*, 2009, **7**, 2851; (e) G. Della Sala, B. Nardone, F. De Riccardis and I. Izzo, *Org. Biomol. Chem.*, 2013, **11**, 726–731; (f) I. Izzo, G. Ianniello, C. De Cola, B. Nardone, L. Erra, G. Vaughan, C. Tedesco and F. De Riccardis, *Org. Lett.*, 2013, **15**, 598–601; (g) C. De Cola, G. Fiorillo, A. Meli, S. Aime, E. Gianolio, I. Izzo and F. De Riccardis, *Org. Biomol. Chem.*, 2014, **12**, 424; (h) C. Tedesco, L. Erra, I. Izzo and F. De Riccardis, *CrystEngComm*, 2014, **16**, 3667–3687; (i) T. Zabrodski, M. Baskin, J. K. Prathap and G. Maayan, *Synlett*, 2014, 25; (j) M. Baskin and G. Maayan, *Biopolymers*, 2015, **104**, 577–584; (k) M. Baskin, L. Panz and G. Maayan, *Chem. Commun.*, 2016, **52**, 10350–10353; (l) T. Ghosh,



- N. Fridman, M. Kosa and G. Maayan, *Angew. Chem., Int. Ed.*, 2018, **57**, 7703–7708.
- 15 (a) K. Kirshenbaum, A. E. Barron, R. A. Goldsmith, P. Armand, E. Bradley, K. T. V. Truong, K. A. Dill, F. E. Cohen and R. N. Zuckermann, *Proc. Natl. Acad. Sci. U. S. A.*, 1998, **95**, 4303–4308; (b) C. W. Wu, T. J. Sanborn, R. N. Zuckermann and A. E. Barron, *J. Am. Chem. Soc.*, 2001, **123**, 2958–2963; (c) C. W. Wu, T. J. Sanborn, K. Huang, R. N. Zuckermann and A. E. Barron, *J. Am. Chem. Soc.*, 2001, **123**, 6778–6784; (d) C. W. Wu, K. Kirshenbaum, T. J. Sanborn, J. A. Patch, K. Huang, K. A. Dill, R. N. Zuckermann and A. E. Barron, *J. Am. Chem. Soc.*, 2003, **125**, 13525–13530; (e) B. C. Gorske, B. L. Bastian, G. D. Geske and H. E. Blackwell, *J. Am. Chem. Soc.*, 2007, **129**, 8928–8929; (f) N. H. Shah, G. L. Butterfoss, K. Nguyen, B. Yoo, R. Bonneau, D. L. Rabenstein and K. Kirshenbaum, *J. Am. Chem. Soc.*, 2008, **130**, 16622–16632; (g) B. C. Gorske, J. R. Stringer, B. L. Bastian, S. A. Fowler and H. E. Blackwell, *J. Am. Chem. Soc.*, 2009, **131**, 16555–16567; (h) O. Roy, C. Caumes, Y. Esvan, C. Didierjean, S. Faure and C. Taillefumier, *Org. Lett.*, 2013, **15**, 2246–2249; (i) C. Caumes, O. Roy, S. Faure and C. Taillefumier, *J. Am. Chem. Soc.*, 2012, **134**, 9553–9556.
- 16 (a) M. J. Kelso, H. N. Hoang, T. G. Appleton and D. P. Fairlie, *J. Am. Chem. Soc.*, 2000, **122**, 10488–10489; (b) M. T. Ma, H. N. Hoang, C. C. G. Scully, T. G. Appleton and D. P. Fairlie, *J. Am. Chem. Soc.*, 2009, **131**, 4505–4512; (c) M. R. Ghadiri and C. Choi, *J. Am. Chem. Soc.*, 1990, **112**, 1630–1632; (d) M. R. Ghadiri and A. K. Fernholz, *J. Am. Chem. Soc.*, 1990, **112**, 9633–9635; (e) F. Ruan, Y. Chen and P. B. Hopkins, *J. Am. Chem. Soc.*, 1990, **112**, 9403–9404; (f) P. Rossi, P. Tecilla, L. Baltzer and P. Scrimin, *Chem.-Eur. J.*, 2004, **10**, 4163–4170; (g) S. R. Gilbertson, G. Chen and M. McLoughlin, *J. Am. Chem. Soc.*, 1994, **116**, 4481–4482; (h) S. R. Gilbertson, C. A. Klug, J. Schaefer, X. Wang and G. S. Hoge, *Organometallics*, 1996, **15**, 4678–4680; (i) N. Ousaka, N. Tani, R. Sekiya and R. Kuroda, *Chem. Commun.*, 2008, 2894–2896; (j) S. Tashiro, K. Matsuoka, A. Minoda and M. Shionoya, *Angew. Chem., Int. Ed.*, 2012, **51**, 13123–13127; (k) S. J. Smith, R. J. Radford, R. H. Subramanian, B. R. Barnett, J. S. Figueroa and F. A. Tezcan, *Chem. Sci.*, 2016, **7**, 5453–5461; (l) S. J. Smith, K. Du, R. J. Radford and F. A. Tezcan, *Chem. Sci.*, 2013, **4**, 3740–3747.
- 17 L. Zborovsky, A. Smolyakova, M. Baskin and G. Maayan, *Chem.-Eur. J.*, 2018, **24**, 1159–1167.
- 18 H. M. Shin, C. M. Kang, M. H. Yoon and J. Seo, *Chem. Commun.*, 2014, **50**, 4465–4468.
- 19 The peptoid-to-metal stoichiometry ratio (a) was determined by calculation the intersection point from the two equations:
- $$a = \frac{\chi_{\text{Cu}}}{1 - \chi_{\text{Cu}}} = \frac{0.674}{0.326} = 2.06 \cong 2.$$
- 20 (a) J. W. Karr, L. J. Kaupp and V. A. Szalai, *J. Am. Chem. Soc.*, 2004, **126**, 13534–13538; (b) J. E. Weder, T. W. Hambley, B. J. Kennedy, P. A. Lay, D. MacLachlan, R. Bramley, C. Delfs, D. K. Murray, S. B. Moubaraki, B. Warwick, J. R. Biffin and H. L. Regtop, *Inorg. Chem.*, 1999, **38**, 1736–1744.
- 21 M. Baskin and G. Maayan, *Dalton Trans.*, 2018, **47**, 10767–10774.
- 22 P. Armand, K. Kirshenbaum, A. Falicov, R. L. Dunbrack Jr, K. A. Dill, R. N. Zuckermann and F. E. Cohen, *Folding Des.*, 1997, **2**, 369–375.
- 23 S. Grimme, C. Bannwarth and P. Shushkov, *J. Chem. Theory Comput.*, 2017, **13**, 1989–2009.
- 24 S. Grimme and C. Bannwarth, *J. Chem. Phys.*, 2016, **145**, 054103–054120.
- 25 TURBOMOLE V7.0 2015, a development of University of Karlsruhe and Forschungszentrum Karlsruhe GmbH, 1989–2007, TURBOMOLE GmbH, since 2007; available from <http://www.turbomole.com>.
- 26 J. M. Tao, J. P. Perdew, V. N. Staroverov and G. E. Scuseria, *Phys. Rev. Lett.*, 2003, **91**, 146401.
- 27 (a) S. Grimme, J. Antony, S. Ehrlich and H. Krieg, *J. Chem. Phys.*, 2010, **132**, 154104; (b) S. Grimme and L. Goerigk, *J. Comput. Chem.*, 2011, **32**, 1456–1465.
- 28 (a) A. Schaefer, C. Huber and R. Ahlrichs, *J. Chem. Phys.*, 1994, **100**, 5829–5835; (b) F. Weigend, M. Häser, H. Patzelt and R. Ahlrichs, *Chem. Phys. Lett.*, 1998, **294**, 143–152; (c) F. Weigend and R. Ahlrichs, *Phys. Chem. Chem. Phys.*, 2005, **7**, 3297–3305.
- 29 A. Klamt and G. Schüürmann, *J. Chem. Soc., Perkin Trans. 2*, 1993, **2**, 799–805.
- 30 (a) K. Eichkorn, F. Weigend, O. Treutler and R. Ahlrichs, *Theor. Chem. Acc.*, 1997, **97**, 119–124; (b) P. Deglmann, K. May, F. Furche and R. Ahlrichs, *Chem. Phys. Lett.*, 2004, **384**, 103–107.
- 31 S. Grimme, *Chem.-Eur. J.*, 2012, **18**, 9955–9964.
- 32 C. Bannwarth and S. Grimme, *Comput. Theor. Chem.*, 2014, **1040–1041**, 45–53.
- 33 A detailed discussion on the calculated vs. experimental UV-Vis spectra including relevant figures is described in the ESI.†
- 34 (a) J. R. Stringer, J. A. Crapster, I. A. Guzei and H. E. Blackwell, *J. Am. Chem. Soc.*, 2011, **133**, 15559–15567; (b) P. Armand, K. Kirshenbaum, R. A. Goldsmith, S. Farr-Jones, A. E. Barron, K. T. V. Truong, K. A. Dill, D. F. Mierke, F. E. Cohen, R. N. Zuckermann and E. K. Bradley, *Proc. Natl. Acad. Sci. U. S. A.*, 1998, **14**, 4309–4314.
- 35 G. L. Butterfoss, B. Yoob, J. N. Jaworski, I. Chorny, K. A. Dill, R. N. Zuckermann, R. Bonneau, K. Kirshenbaum and V. A. Voelz, *Proc. Natl. Acad. Sci. U. S. A.*, 2012, **109**, 14320–14325.
- 36 M. Baskin, N. Fridman, M. Kosa and G. Maayan, *Dalton Trans.*, 2017, **46**, 15330–15339.
- 37 (a) J. Peisach and W. E. Blumberg, *Arch. Biochem. Biophys.*, 1974, **165**, 691–708; (b) N. Wei, N. N. Murthy and K. D. Karlin, *Inorg. Chem.*, 1994, **33**, 6093–6100; (c) B. Lucches, K. S. Humphreys, D.-H. Lee, C. D. Incarvito, R. D. Sommer, A. L. Rheingold and K. D. Karlin, *Inorg. Chem.*, 2004, **43**, 5987–5998.



38 Numerical evaluation of the association constants of (**12P5**)Cu and (**12P6**)Cu with either  $\text{Zn}^{2+}$  or  $\text{Co}^{2+}$  was not possible. Initially, we have used UV-Vis titrations in low concentrations to estimate these  $K$  values, but the obtained numbers reflected very strong binding of the second metal ion to either (**12P5**)Cu or (**12P6**)Cu, which were at least five orders of magnitude higher than the concentration of (**12P5**)Cu or (**12P6**)Cu in these experiments and thus the

obtained numbers could not be considered accurate (See ESI†). Typical competition experiments with other chelators (*e.g.* EGTA) were attempted, however these strong chelators could take out the bound  $\text{Cu}^{2+}$  ion and thus these experiments also could not be used for determining the association constants. Therefore, direct competition between the two peptoids was performed.

