

Cite this: *Chem. Sci.*, 2024, 15, 3240

All publication charges for this article have been paid for by the Royal Society of Chemistry

# *In situ* electrochemical regeneration of active 1,4-NADH for enzymatic lactic acid formation via concerted functions on Pt-modified TiO<sub>2</sub>/Ti†

Nada H. A. Besisa,<sup>a</sup> Ki-Seok Yoon<sup>b</sup> and M. Yamauchi<sup>c</sup>  \*abcde

Nicotinamide adenine dinucleotide (NAD<sup>+</sup>) and its reduced form (NADH) are key cofactors serving as essential hydrogen acceptors and donors to facilitate energy and material conversions under mild conditions. We demonstrate direct electrochemical conversion to achieve highly efficient regeneration of enzymatically active 1,4-NADH using a Pt-modified TiO<sub>2</sub> catalyst grown directly on a Ti mesh electrode (Pt-TOT). Spectral analyses revealed that defects formed by the inclusion of Pt species in the lattice of TiO<sub>2</sub> play a critical role in the regeneration process. In particular, Pt-TOT containing approximately 3 atom% of Pt exhibited unprecedented efficiency in the electrochemical reduction of NAD<sup>+</sup> at the lowest overpotential to date. This exceptional performance led to the production of active 1,4-NADH with a significantly high yield of 86 ± 3% at −0.6 V vs. Ag/AgCl (−0.06 V vs. RHE) and an even higher yield of 99.5 ± 0.4% at a slightly elevated negative potential of −0.8 V vs. Ag/AgCl (−0.2 V vs. RHE). Furthermore, the electrochemically generated NADH was directly applied in the enzymatic conversion of pyruvic acid to lactic acid using lactate dehydrogenase.

Received 7th August 2023  
Accepted 13th December 2023

DOI: 10.1039/d3sc04104b

rsc.li/chemical-science

## Introduction

Enzymatic technology provides a highly efficient and environmentally friendly approach to the synthesis of a wide range of value-added chemicals, including chiral compounds, pharmaceuticals, and food additives, among other applications.<sup>1–4</sup> Active enzymes are often accompanied by cofactors such as nicotinamide adenine dinucleotide (NAD), particularly its reduced form (NADH), which serves as a critical electron or hydrogen donor in both nature and industry.<sup>3,5–7</sup>

NADH is normally recycled through complex processes involving an electron transport chain such as glycolysis and the Krebs cycle, which has been a bottleneck preventing the widespread application of enzymatic systems. Therefore, more efficient cofactor recycling methods are highly desirable.<sup>4</sup> Among various approaches, electrochemical hydrogenation of NAD<sup>+</sup> to regenerate enzymatically active 1,4-NADH (NADH-reg, Scheme

1) has attracted considerable attention due to its simplicity and environmental friendliness.<sup>7–10</sup> Indirect electrochemical systems often require mediators to facilitate electron transfer, resulting in lower overpotentials and avoidance of electrode fouling.<sup>3</sup> However, these mediator systems suffer from the mediator instability and toxicity, affecting the final enzymatic product.<sup>3,4</sup> In contrast, recent research on direct electrochemical hydrogenation systems for NADH-reg has shown an important advantage in eliminating the need for mediators.<sup>3,5,11–16</sup>

Both bare and modified electrodes have been employed for NADH-reg, but the yields remain unsatisfactorily low due to the preferential production of the enzymatically inactive forms (Scheme 1).<sup>9</sup> NADH-reg proceeds in two steps:<sup>8,17</sup> first, NAD<sup>+</sup> is reduced to an NAD-free radical, and second, the free radical can either undergo protonation and further reduction to yield enzymatically active 1,4-NADH (Step 2a), or it can rapidly dimerize to form inactive products such as NAD<sub>2</sub> (Step 2b) and other side products such as 1,2-NADH (Step 2b') and 1,6-NADH (Step 2b''). The kinetics of Step 2a for the formation of 1,4-NADH is significantly slower than that of the dimerization process.<sup>8</sup> Therefore, efforts have been made to accelerate the second pathway, emphasizing the need for a smooth electrode-driven hydrogenation of the NAD free radical to achieve selective production of 1,4-NADH (Scheme S1a†). In this regard, the use of catalysts with high hydrogen evolution reaction (HER) capability has been a strategy to find a good electrocatalyst for NADH-reg.<sup>8</sup> In addition, previous studies have reported high overpotentials and usage of unaffordable and high-cost

<sup>a</sup>Department of Chemistry, Graduate School of Science, Kyushu University, Fukuoka 819-0395, Japan. E-mail: yamauchi@ms.ifoc.kyushu-u.ac.jp

<sup>b</sup>International Institute for Carbon-Neutral Energy Research (WPI-I2CNER), Kyushu University, Fukuoka 819-0395, Japan

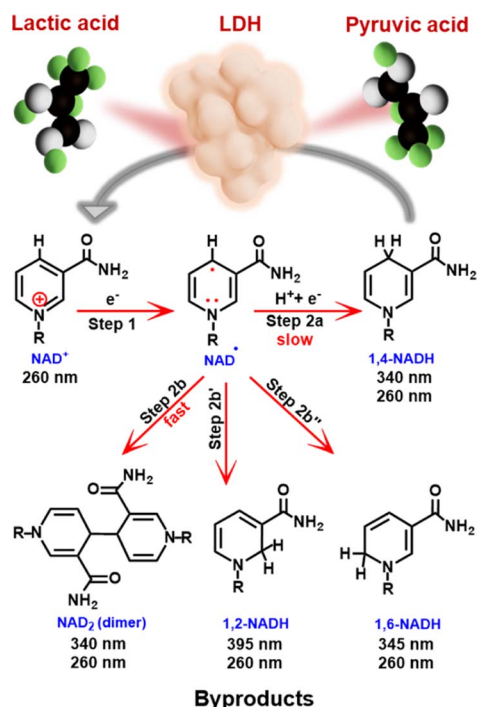
<sup>c</sup>Institute for Materials Chemistry and Engineering (IMCE), Kyushu University, Fukuoka 819-0395, Japan

<sup>d</sup>Advanced Institute for Materials Research (WPI-AIMR), Tohoku University, Sendai 980-8577, Miyagi, Japan

<sup>e</sup>Research Center for Negative Emissions Technologies (K-Nets), Kyushu University, Fukuoka 819-0395, Japan

† Electronic supplementary information (ESI) available. See DOI: <https://doi.org/10.1039/d3sc04104b>





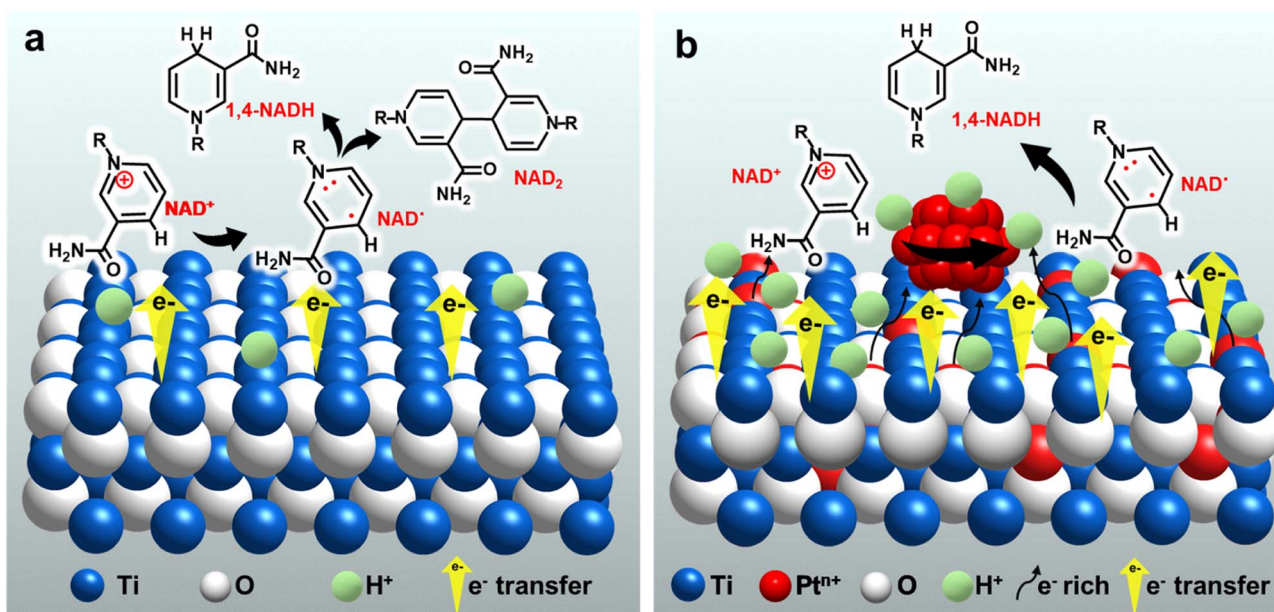
Scheme 1 Mechanism of electrochemical reduction of NAD<sup>+</sup>, possible products and wavelengths of observable UV absorption peaks for each product. Application of the enzymatically active 1,4-NADH for lactic acid formation is also illustrated.

materials,<sup>8,10</sup> highlighting the demand for more practical electrode materials that can efficiently produce active 1,4-NADH at lower overpotentials.

Titanium dioxide (TiO<sub>2</sub>) has received much attention due to its abundance, non-toxicity, good stability, affordable cost.<sup>18,19</sup>

In addition, it has high activity in various applications, including electrochemistry.<sup>20–24</sup> Recently, TiO<sub>2</sub> has been found to exhibit high selectivity for the production of valuable products such as alcohols and amino acids from organic acids.<sup>24–27</sup> Furthermore, sufficient controllability of its electronic states by doping with other elements is another advantage as an electrode material.<sup>28–31</sup> Previous studies, including ours, have suggested that the unique performance of TiO<sub>2</sub>-based electrodes results from their ability to interact with carboxy groups of the reactants.<sup>26,27,32,33</sup> Considering the polar nature of the amide moiety in NADs, analogous to the carboxy group, the TiO<sub>2</sub> surface is expected to show feasible interactions with NADs and contribute to enhancing the selectivity for the production of NADH (Scheme 2a). Therefore, in this study, we chose TiO<sub>2</sub> as an affordable and promising electrocatalyst to efficiently trap NAD<sup>+</sup> and incorporation of Pt species, which shows excellent HER capability, and further promotes NAD<sup>+</sup> hydrogenation to achieve highly selective and efficient electrochemical NADH-reg (Scheme 2b) for the advancement of sustainable and cost-effective enzymatic processes.

Here, we apply TiO<sub>2</sub> grains grown on a Ti mesh cathode (TOT), and further introduce Pt into TOT by including a Pt source in a hydrothermal preparation process of TOT. The resultant Pt-modified TiO<sub>2</sub>/Ti cathode (**Pt-TOT**) was found to exhibit superior NADH-reg performance in terms of selectivity for 1,4-NADH, surpassing that of TOT and Pt electrodes. In-depth analyses of **Pt-TOT** revealed that the presence of Pt in various valence states on TiO<sub>2</sub>/Ti and defects plays a crucial role in enhancing the yield of 1,4-NADH (Scheme 2b) and lowering the overpotential for NADH-reg. Furthermore, the usability of the electrochemically generated 1,4-NADH in enzymatic lactic acid formation from pyruvic acid was then verified using lactate dehydrogenase (LDH), as shown in Scheme 1.



Scheme 2 Suggested strategy and mechanism for the electrochemical reduction of NAD<sup>+</sup> on (a) TOT and (b) Pt-TOTs.



## Results and discussion

### Structural characterization of electrodes

Four Pt-modified TOT electrodes with different Pt contents were prepared using a hydrothermal process (see the ESI† for detailed methodology). The Pt concentration in the starting solution was adjusted to control the amount of Pt species in the electrodes. The resulting electrodes are denoted as **Pt-TOT.X** ( $X = 1-4$ ), indicating increasing Pt content (Table S1†). To establish Pt contents in **Pt-TOTs**, inductively coupled plasma optical emission spectroscopy (ICP) was employed, and the obtained values are summarized in Table S1.†

The morphology of prepared TOT and **Pt-TOTs** was investigated by transmission electron microscopy (TEM) and scanning electron microscopy (SEM) combined with energy dispersive X-ray spectroscopy (EDS, where Pt content was represented as Pt atom% according to EDS elemental analysis in this work) (Fig. 1a, S1–S3, and Table S2†). High contrast particles were observed on the surface of **Pt-TOTs**, the number of which increased proportionally with the Pt content (Fig. 1a and S1†). In TOT, undefined large grains measuring several tens of nanometers were observed (Fig. S2a†). In contrast, the grain size of **Pt-TOTs** decreased with increasing Pt content, as depicted in Fig. S2b–f.† Furthermore, EDS mapping analysis revealed the homogeneous distribution of Pt species throughout the grains

of **Pt-TOTs**, with their density increasing with increasing Pt content (Fig. 1a and S3†). On the other hand, X-ray diffraction (XRD) patterns of TOT and **Pt-TOTs** primarily displayed weak and strong diffractions of tetragonal and hcp phases, respectively, indicating the formation of rutile-type (tetragonal)  $\text{TiO}_2$  grains on the hcp-type Ti mesh (Fig. 1b). Notably, no diffraction peaks corresponding to PtO or Pt metal phases were observed in **Pt-TOTs**. Rietveld analysis provided lattice constants for  $\text{TiO}_2$  grown on TOT and **Pt-TOTs** (Fig. S4 and Table S3†). Compared to TOT, the lattice constants  $a$  and  $b$  of **Pt-TOTs** slightly decreased with increasing Pt content, causing a subtle shift of diffraction peaks from the rutile phase toward the higher angle side (Fig. 1c). This observation suggests the substitution of 6-coordinated  $\text{Ti}^{3+}$  ions with a radius of 0.67 Å by  $\text{Pt}^{4+}$  ions with a smaller radius of 0.625 Å.<sup>31</sup> Consequently, Pt species not only exist as nanoparticles on the surface but are also incorporated within the  $\text{TiO}_2$  lattice of **Pt-TOTs**.

### Electrochemical studies

To investigate onset potentials for the  $\text{NAD}^+$  reduction, we conducted cyclic voltammetry (CV) for the prepared electrodes over a potential range from 0 to  $-1.8$  V vs. Ag/AgCl ( $-0.06$  to  $-1.2$  V vs. RHE) with a scan rate of  $10 \text{ mV s}^{-1}$  (Fig. 2a–d). In the absence of  $\text{NAD}^+$  (blank), the Ti mesh exhibited the most

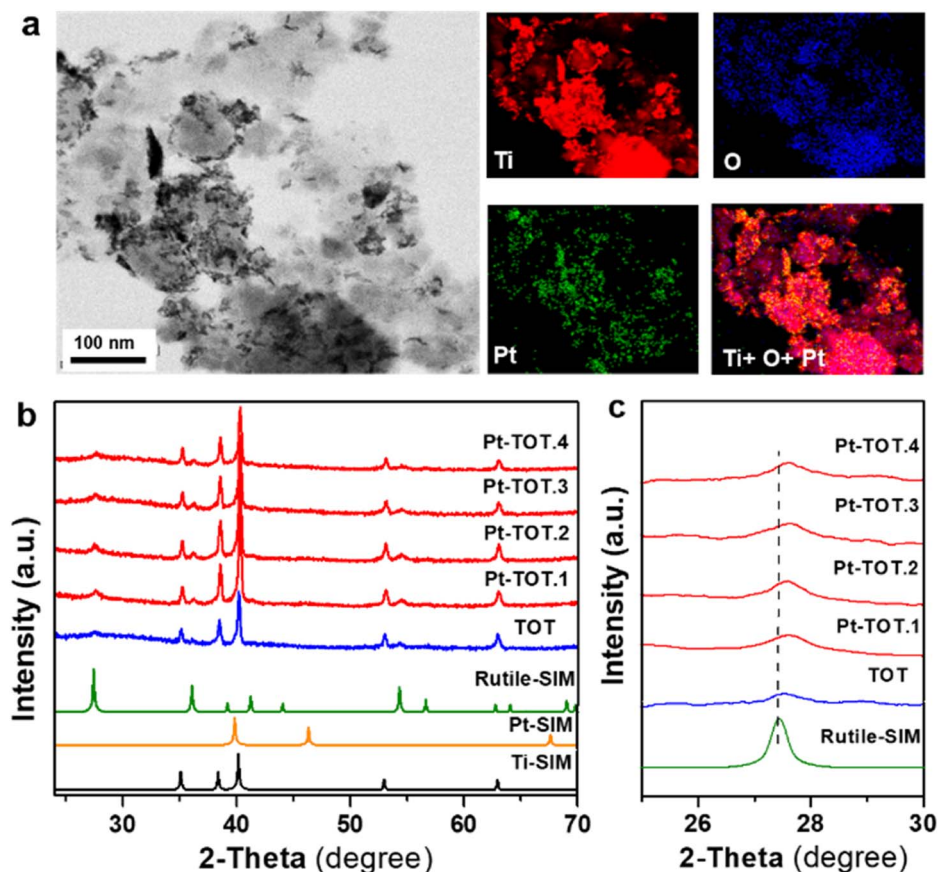


Fig. 1 (a) STEM and EDS elemental mapping of **Pt-TOT.2**, (b) XRD pattern, and (c) expanded XRD pattern from  $2\theta = 24$  to  $30^\circ$  of TOT and **Pt-TOTs** with different Pt content (the dashed line shows the diffraction peak position of rutile  $\text{TiO}_2$ ).



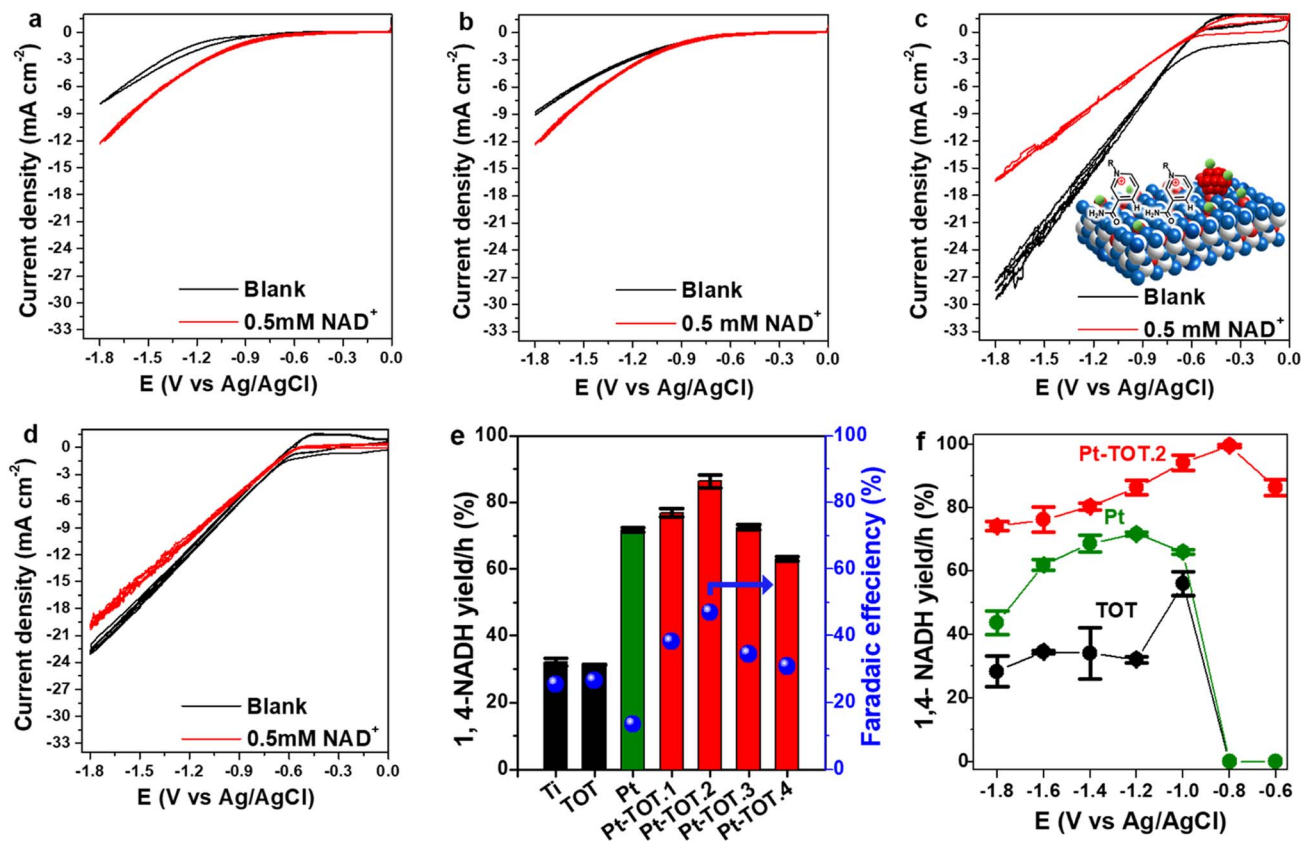


Fig. 2 Cyclic voltammograms (CV) of (a) Ti, (b) TOT (c) Pt-TOT.2, the inset of which is a schematic representation of adsorption of  $\text{NAD}^+$ , and (d) Pt in both blank (black) and 0.5 mM  $\text{NAD}^+$  solution (red), (e) yield and faradaic efficiency (FE) for NADH-reg at  $-1.2$  V vs. Ag/AgCl, and (f) yield for NADH-reg on TOT, Pt, Pt-TOT.2 in a wide potential range.

negative onset potential at approximately  $-1.1$  V vs. Ag/AgCl (Fig. 2a). The onset potential on TOT was slightly shifted to approximately  $-1$  V vs. Ag/AgCl (Fig. 2b), whereas Pt-TOT.2 and Pt showed even lesser negative onset potentials at  $-0.5$  (Fig. 2c) and  $-0.6$  V vs. Ag/AgCl (Fig. 2d), respectively, suggesting that the presence of  $\text{TiO}_2$  and Pt promotes both the HER and  $\text{NAD}^+$  reduction reaction. On the other hand, a larger negative current density ( $j$ ) was observed in the presence of  $\text{NAD}^+$  on bare Ti mesh (Fig. 2a) and TOT (Fig. 2b) compared to the blank, suggesting the emergence of their catalytic activity for  $\text{NAD}^+$  reduction. Interestingly, Pt-TOT.2 showed the largest  $j$  in the absence of  $\text{NAD}^+$  (Fig. 2c), suggesting that inclusion of Pt with  $\text{TiO}_2$  enhances the HER. Notably, the  $j$  on Pt-TOT.2 in the presence of  $\text{NAD}^+$  was smaller than that in the blank, but larger than those on Ti and TOT. In addition, Pt exhibited a slightly larger  $j$  on the blank than in the presence of  $\text{NAD}^+$ . Given that Pt is expected to show NADH-reg activity, the decrease in  $j$  on Pt-TOT.2 with  $\text{NAD}^+$  possibly implies the suppression of the HER due to  $\text{NAD}^+$  adsorption on the surface. Additionally, the current density in the presence of  $\text{NAD}^+$  followed the order of  $20.2 \text{ mA cm}^{-2}$  on Pt,  $16.5 \text{ mA cm}^{-2}$  on Pt-TOT.2,  $12 \text{ mA cm}^{-2}$  on TOT, and  $10 \text{ mA cm}^{-2}$  on Ti at  $-1.8$  V vs. Ag/AgCl, possibly indicating that the coexistence of both Pt and  $\text{TiO}_2$  efficiently activates both the HER and  $\text{NAD}^+$  reduction.

We then conducted the electrochemical  $\text{NAD}^+$  reduction on the prepared electrodes using chronoamperometry (CA) at  $-1.2$

V vs. Ag/AgCl ( $-0.6$  V vs. RHE) where all electrodes showed the reduction current in the CV experiments with  $\text{NAD}^+$  using an H-type cell (Fig. S5†). As presented in Scheme 1, 1,4-NADH exhibits a UV absorption peak around 340 nm, whereas the peaks for possible side products such as  $(\text{NAD})_2$  dimer, 1,6-NADH, and 1,2-NADH are observable at similar positions of 340, 345, and 395 nm, respectively. Therefore, we evaluated the yield for NADH-reg by enzyme activity assay (Scheme S1b†), in addition to calculating faradaic efficiency (FE) and the production rate for NADHs ( $C_{\text{NADH}}$  and  $C_{1,4\text{-NADH}}$ , refer to the ESI for more details, Fig. S6†) to compare the selectivity on different electrodes. Fig. 2e shows that Pt and Pt-TOTs exhibit larger yields for NADH-reg than Ti and TOT, suggesting that the Pt loading significantly enhances NADH-reg. Interestingly, Pt-TOT.1, Pt-TOT.2 and Pt-TOT.3 demonstrated higher NADH-reg yields than Pt, implying that the presence of TOT is crucial for achieving higher selectivity for NADH-reg. As a result, Pt-TOT.2 showed the largest yield for NADH-reg of  $86 \pm 3\%$  with the highest FE of 47% (Fig. 2e). Further increase in Pt content led to a slight decrease in catalytic activity. We then presume that NADH-reg preferentially occurs around Pt sites interacting with  $\text{TiO}_2$ , whereas the HER surpasses NADH-reg once the number of Pt nanoparticles exceeds a level to form HER sites isolated from influence from the  $\text{TiO}_2$  surface.

Fig. 2f compares NADH-reg yields on Pt, TOT and Pt-TOT.2 over a wide range of potentials. Below  $-1.2$  V vs. Ag/AgCl, the



yields for NADH-reg on TOT and Ti electrodes were approximately 30% (Fig. 2f and S7a†). In contrast, at a less negative potential of  $-1.0$  V vs. Ag/AgCl, the NADH-reg performance on TOT and Ti was enhanced, resulting in yields of  $56 \pm 4$  and  $68 \pm 1\%$ , respectively. However, at potentials less negative than  $-1$  V vs. Ag/AgCl, no NADH-reg was observed on either Ti or TOT. Similarly, NADH-reg on Pt started at  $-1$  V and showed the maximum with yield of  $72 \pm 1.5\%$  at  $-1.2$  V vs. Ag/AgCl. In contrast, **Pt-TOT.2** demonstrated a significantly high yield of  $86 \pm 3\%$  at only  $-0.6$  V vs. Ag/AgCl ( $-0.06$  V vs. RHE), which is the lowest overpotential among all those reported so far (Table S4†). At a slightly more negative potential of  $-0.8$  V vs. Ag/AgCl ( $-0.2$  V vs. RHE), the highest yield of  $99.5 \pm 0.4\%$  for NADH-reg was achieved on **Pt-TOT.2**, combined with high stability and reusability over the number of cycles (Fig. S7b†). In addition, it showed the highest current density at  $-0.8$  V vs. Ag/AgCl confirming the high activity towards  $\text{NAD}^+$  reduction (Fig. S7c†).

To further confirm the product selectivity,  $^1\text{H}$  NMR measurements were performed for products generated in CA at  $-0.8$  V vs. Ag/AgCl with 4 mM  $\text{NAD}^+$  solution, which is 8 times higher than the concentration used in previous CA measurements to obtain sufficient NMR intensity.  $^1\text{H}$  NMR spectra of pure commercial  $\text{NAD}^+$  and 1,4-NADH as well as the products of our electrochemical NADH-reg on Pt, TOT, and **Pt-TOT.2** are shown in Fig. 3. A singlet signal located at 9.28 ppm is characteristic of the H-2 hydrogen on the  $\text{NAD}^+$  structure of the

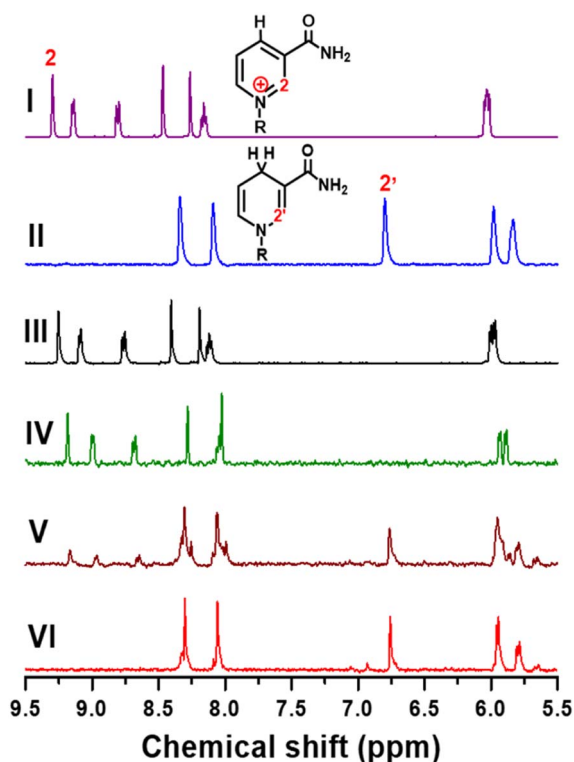


Fig. 3  $^1\text{H}$  NMR spectra of  $\text{NAD}^+$  (4 mM in 0.1 M  $\text{D}_2\text{O}$  phosphate buffer, pH 6) (I), 1,4-NADH (4 mM in 0.1 M  $\text{D}_2\text{O}$  phosphate buffer, pH 6) (II), products generated from 4 mM  $\text{NAD}^+$  in 0.1 M  $\text{D}_2\text{O}$  phosphate buffer with pH 5.8 at  $-0.8$  V vs. Ag/AgCl on TOT (III) for 2 h, Pt (IV) for 2 h, and **Pt-TOT.2** (V) for 2 h, and on **Pt-TOT.2** (VI) for 4 h.

nicotinamide moiety (Fig. 3I). The two singlets observed between 8 and 8.5 ppm are related to the hydrogen atoms on the adenine ring contained in the R group. In contrast, freshly prepared 1,4-NADH solution showed a singlet located at 6.8 ppm which is characteristic for the H-2' of the nicotinamide ring of NADH and two singlets related to the adenine ring (Fig. 3II).  $^1\text{H}$  NMR spectra of the products on Pt and TOT presented signals assignable to  $\text{NAD}^+$  only, confirming the inability of Pt and TOT to produce active NADH at  $-0.8$  V vs. Ag/AgCl (Fig. 3III and IV). On the other hand, the characteristic singlet at 6.8 ppm, assignable to the production of 1,4-NADH, was observed at more negative potential than  $-1.2$  V vs. Ag/AgCl on Pt although accompanying a singlet at 7 ppm suggesting the formation of 1,6-NADH<sup>34</sup> (Fig. S7d†). Surprisingly, Fig. 3V shows an obvious singlet signal at 6.8 ppm, confirming the 1,4-NADH formation in addition to signals of the starting  $\text{NAD}^+$ . The results suggest that only pure 1,4-NADH is produced on **Pt-TOT.2** without formation of other side products. To completely convert the starting  $\text{NAD}^+$ , longer-time reaction (4 h) was conducted. Although signals for starting  $\text{NAD}^+$  almost disappeared and signals for 1,4-NADH grew, a small singlet was detected at 6.93 ppm (Fig. 3VI) with the integral ratio to that for 1,4-NADH of 0.086 : 1. According to the previous report,<sup>34</sup> the 6.93 ppm peak is assignable to the formation of 1,6-NADH. This phenomenon can be understood by considering considerably high concentration of starting  $\text{NAD}^+$  compared to that in CA, which led to higher coverage of intermediates and induces formation of the side products.<sup>35</sup> Thus, application of appropriate reaction conditions is critical to improve selectivity to produce 1,4-NADH.

### Mechanistic understanding

To gain insight into the catalytic performance of our electrodes, we conducted XPS measurements to investigate the electronic properties of the prepared TOT and **Pt-TOTs** (Fig. 4, S8, and Table S5†). Interestingly, Fig. 4a and S8† revealed that increasing Pt content in **Pt-TOTs** resulted in a slight positive shift of the peaks of both Ti 2p and O 1s signals compared to those on TOT.<sup>31</sup> This shift probably indicates the interaction of Pt species with Ti and O, forming Ti–O–Pt bonds and suggesting an increase in defects ( $\text{Ti}^{3+}$  and oxygen vacancies,  $\text{V}_\text{o}$ ) as presented in Table S5.† The XPS Pt 4f spectra of **Pt-TOT.2** suggested the presence of  $\text{Pt}^{n+}$  species with different valence states in **Pt-TOT.2** (Fig. 4b, ESI†).<sup>31</sup> Notably, the incorporation of Pt resulted in a red shift of the Raman peak from  $446.1$   $\text{cm}^{-1}$  to a lower wavenumber (Fig. 4c and S9†). This red shift can be attributed to the introduction of defects and an increase in  $\text{V}_\text{o}$ , likely due to the replacement of Ti by Pt. The Raman and XPS analyses collectively suggest that Pt species occupy certain  $\text{Ti}^{3+}$  positions and promote Ti–O–Pt interactions.<sup>31</sup>

To further examine the role of TOT in  $\text{NAD}^+$  adsorption, we conducted Fourier transform infrared spectroscopy using an attenuated total reflectance configuration (ATR-IR) for analysis of adsorbed  $\text{NAD}^+$  on Ti, TOT, and **Pt-TOT.2** surfaces after immersing into 0.5 mM  $\text{NAD}^+$  solution, washing, and drying (Fig. 4d). We observed broad signals on all electrodes at



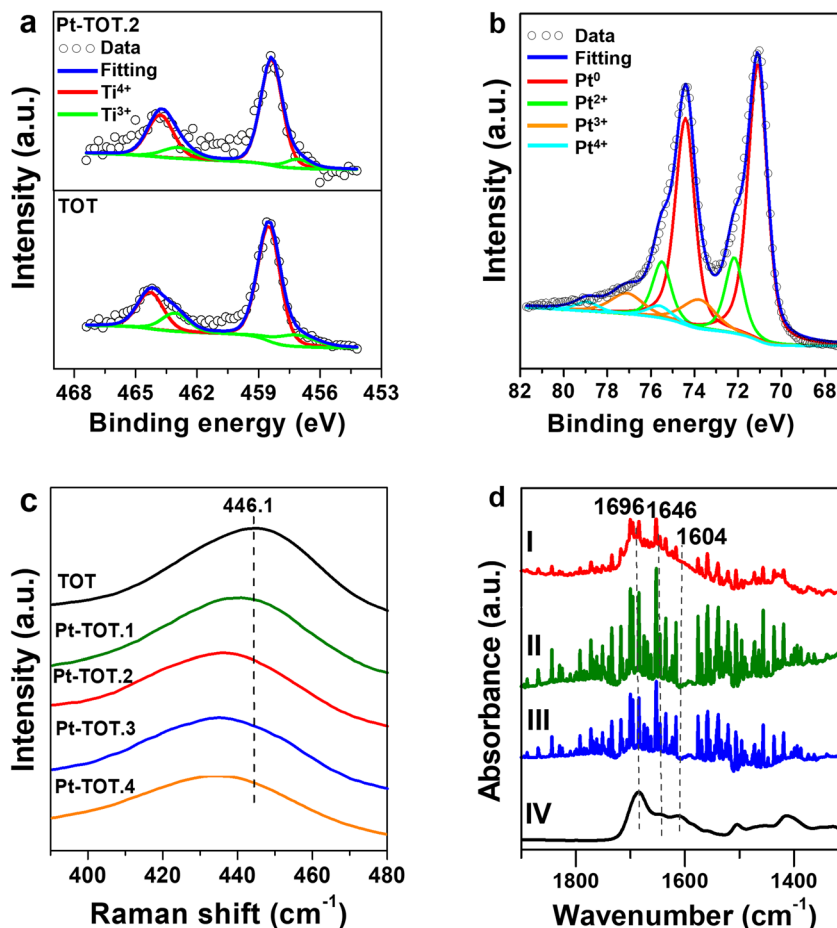


Fig. 4 (a) Ti 2p XPS spectra of TOT and Pt-TOT.2, (b) Pt 4f XPS spectra of Pt-TOT.2, (c) Raman spectra and of TOT and Pt-TOTs in the range from 390 to 480 cm<sup>-1</sup>, and (d) FT-IR of adsorbed NAD<sup>+</sup> on the surface of (I) Pt-TOT.2, (II) TOT (III) Ti, and (IV) ATR-IR spectrum of the NAD<sup>+</sup> crystal (95%).

wavenumbers similar to the reported values, with sharp signals originating from the electrolytes (water vapor). We also measured the IR spectrum of the NAD<sup>+</sup> crystal (95%) and observed broad peaks around 1690, 1646, and 1608 cm<sup>-1</sup>, corresponding to signals observed at 1696 (C=O stretch, nicotinamide), 1646 (NH<sub>2</sub> bend, adenine), and 1604 cm<sup>-1</sup> (C5–C6 stretch, adenine) for NAD<sup>+</sup> powder.<sup>15b</sup> By comparing these results, all spectra seem to contain spectral components of NAD<sup>+</sup> and Pt-TOT.2 has the largest signals assignable to NAD<sup>+</sup>, possibly indicating that favorable environments for NAD<sup>+</sup> adsorption are created on Pt-TOT.2, probably due to cooperative interactions between TOT and Pt. In particular, this may be attributed to the presence of oxygen vacancies formed through Ti–O–Pt interactions, which facilitate the adsorption of the amide C=O.<sup>15c</sup> The existence of various valence states on Pt species has been previously correlated with the favorable electron transfer,<sup>31</sup> and the formation of linking Ti–O–Pt bonding networks in the oxide and the boundary around Pt nanoparticles on the surface can mediate the electron transfer to the adsorbed NAD<sup>+</sup> (Scheme 2b).<sup>36</sup> These synergistic effects contribute to the remarkable catalytic performance of Pt-TOTs in NADH-reg and provide valuable insights for the design of efficient electrochemical processes.

We further investigated the electrochemical double layer capacitance ( $C_{dl}$ ) on Pt and Pt-TOT.2 to gain deeper insights into the electrode surfaces. The  $C_{dl}$  was evaluated based on the slope of the charging current, as shown in Fig. S10.† Subsequently, the corresponding electrochemical surface areas (ECSAs) were calculated from the  $C_{dl}$ s and are presented in Fig. S11d.† Among the Pt-containing electrodes, it is evident that Pt-TOT.2 exhibits the highest values for both electrochemical double layer capacitance ( $C_{dl}$ ) and electrochemical surface area (ECSA). The performance of the hydrogen evolution reaction (HER) on these electrodes at  $-0.8$  V vs. Ag/AgCl was also assessed as shown in Fig. S10d.† Remarkably, Pt-TOT.2 demonstrated the highest partial current density for the HER among the three electrodes, whereas Pt exhibited the lowest HER. We think that the formation of different valence states of Pt (Pt<sup>*n*+</sup>,  $n = 0, 2, 3, \text{ or } 4$ ) plays an important role in enhancing the NADH-reg.

This observed trend provides a straightforward explanation for the behavior in NADH-reg; Pt-TOTs likely possess the largest number of hydrogens adsorbed on their surface ( $H_{ads}$ ), a favorable condition for enhancing the kinetics of Step 2a in Scheme 1 (for more detailed explanation of the HER, refer to the ESI†). Furthermore, Pt-TOTs predominantly adsorb NAD<sup>+</sup>, making them an ideal platform for both NAD adsorption and efficient



hydrogen supply. The interplay of  $\text{TiO}_2$  in  $\text{NAD}^+$  adsorption and the presence of  $\text{Pt}^{n+}$  species in **Pt-TOTs**, responsible for enhancing  $\text{H}_{\text{ads}}$  coverage and promoting electron transfer to the adsorbed  $\text{NAD}$  molecules, collectively contribute to accelerating the 1,4-NADH production. Notably, the rapid hydrogenation of  $\text{NAD}$  molecules on **Pt-TOTs** effectively limits the occurrence of dimerization processes and side products, ensuring superior selectivity.

In light of these results, we have presented a plausible mechanism for  $\text{NADH}$ -reg on TOT and **Pt-TOTs**, which is illustrated in Scheme 2. The findings presented in this study shed light on the mechanism underlying  $\text{NADH}$ -reg on **Pt-TOTs**, and we propose the mechanism based on our results in the ESI† (eqn (S14)–(S19)). Therefore, **Pt-TOTs** emerge as a highly promising electrode for efficient electrochemical regeneration of enzymatically active 1,4-NADH at significantly low overpotentials.

Furthermore, we evaluated the enzymatic activity of the 1,4-NADH produced using **Pt-TOT.2** for the electrochemical generation of lactic acid from pyruvic acid. For this purpose, we utilized purified lactate dehydrogenase (LDH) from *Lactobacillus acidophilus* as the enzyme in our system (refer to ESI, Fig. S11 and S12†), along with the addition of pyruvic acid to the  $\text{NAD}^+$  solution. To monitor the production of lactic acid, we employed UV spectrophotometry and an H-type electrochemical cell, analyzing the product at 15-minute intervals (Fig. 5). In addition, we employed *in situ* UV spectroscopy (Fig. S13†) to confirm the consumption of  $\text{NADH}$  produced by our system during the lactic acid formation over time (Fig. S14†). Our observations revealed a progressive increase in the concentration of generated 1,4-

$\text{NADH}$  over time during the electrochemical reaction in the absence of pyruvic acid and LDH, as shown in Fig. 5, the insets (a) and (b), and S14.† Conversely, when we introduced both pyruvic acid and LDH, the concentration of 1,4-NADH became negligible, indicating that the produced 1,4-NADH was immediately utilized by LDH for the reduction of pyruvic acid (Fig. 5 and S14†). Furthermore, we performed HPLC analysis (Fig. S15†) to verify the product generated from the enzymatic electrochemical formation of lactic acid on **Pt-TOT.2**, which conclusively confirmed the production of lactic acid. These results unequivocally demonstrate that the generated 1,4-NADH using the **Pt-TOT.2** electrode effectively serves as an electron donor in the enzymatic reaction catalyzed by LDH.

## Conclusion

**Pt-TOTs** demonstrated exceptional performance in  $\text{NADH}$ -reg. Notably, **Pt-TOT.2** exhibited the highest yield of  $99.5 \pm 0.4\%$  at the lowest reported overpotential of only  $-0.8 \text{ V vs. Ag/AgCl}$  ( $-0.2 \text{ V vs. RHE}$ ), and  $86 \pm 3\%$  at an even lower overpotential of  $-0.6 \text{ V vs. Ag/AgCl}$  ( $-0.06 \text{ V vs. RHE}$ ). This outstanding performance arises from the synergistic effects of the predominant  $\text{NAD}$  adsorption on  $\text{TiO}_2$  and the rapid kinetics of hydrogenation achieved on **Pt-TOT.2**, with the presence of  $\text{Pt}^{n+}$  species in different valence states. The integration of such synergistic surface functions at the electrode interface emerges as a pivotal factor in achieving efficient electrochemical processes. Moreover, we validated the enzymatic activity of the 1,4-NADH produced using our designed electrode by converting pyruvic acid to lactic acid using LDH. The highly efficient  $\text{NADH}$ -reg demonstrated in this study holds great promise for advancing enzymatic systems and facilitating their widespread application in energy and materials transformations.

## Data availability

We provided the related data in the ESI.†

## Author contributions

Nada H. A. Besisa: conceptualization, investigation, experimental, writing – original draft, validation, analytical interpretation. Ki-SeokYoon: review and editing. M. Yamauchi: conceptualization, review and editing, supervision.

## Conflicts of interest

There are no conflicts to declare.

## Acknowledgements

This work was supported by the Ministry of Education, Culture, Sports, Science and Technology (MEXT) of Japan (Grant No. 197321, JP18H05517 “Hydrogenomics” and 22K19088), and the Moonshot Research and Development Program (JPNP18016).

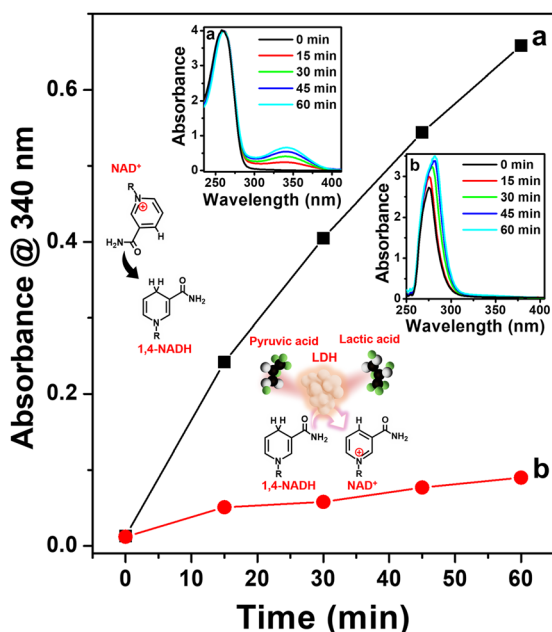


Fig. 5 UV absorbance at 340 nm plotted against time for the electrochemical reduction of (a) 0.25 mM  $\text{NAD}^+$  and (b) 0.25 mM  $\text{NAD}^+$  with 20 mM pyruvic acid and  $8 \text{ U ml}^{-1}$  LDH from 0 min to 60 min. Insets show the corresponding UV absorbance measured for samples taken every 15 min during the electrochemical reduction of (a) and (b) and schematic representation of the reactions involved.



## References

- U. T. Bornscheuer, G. W. Huisman, R. J. Kazlauskas, S. Lutz, J. C. Moore and K. Robins, Engineering the third wave of biocatalysis, *Nature*, 2012, **485**, 185–194.
- J. Kim, H. Jia and P. Wang, Challenges in biocatalysis for enzyme-based biofuel cells, *Biotechnol. Adv.*, 2006, **24**, 296–308.
- A. Liese, K. Seelbach and C. Wandrey, *Industrial biotransformations*, WILEY-VCH, Weinheim, 2nd edn, 2006.
- A. Walcarius, R. Nasraoui, Z. Wang, *et al.*, Factors affecting the electrochemical regeneration of NADH by (2,2'-bipyridyl) (pentamethylcyclopentadienyl)-rhodium complexes: Impact on their immobilization onto electrode surfaces, *Biochemistry*, 2011, **82**, 46–54.
- I. Ali, T. Khan and S. Omanovic, Direct electrochemical regeneration of the cofactor NADH on bare Ti, Ni, Co and Cd electrodes: The influence of electrode potential and electrode material, *J. Mol. Catal. A: Chem.*, 2014, **387**, 86–91.
- I. Ali, A. Gill and S. Omanovic, Direct electrochemical regeneration of the enzymatic cofactor 1,4-NADH employing nano-patterned glassy carbon/Pt and glassy carbon/Ni electrodes, *Chem. Eng. J.*, 2012, **188**, 173–180.
- S. Immanuel and R. Sivasubramanian, Electrochemical reduction of NAD<sup>+</sup> on graphene oxide and chemically reduced graphene oxide nanosheets, *Mater. Sci. Eng., B*, 2020, 114705.
- S. Immanuel, R. Sivasubramanian, R. Gul and M. A. Dar, Recent Progress and Perspectives on Electro-chemical Regeneration of Reduced Nicotinamide Adenine Dinucleotide (NADH), *Chem.-Asian J.*, 2020, **15**, 4256–4270.
- R. Barin, S. Rashid-Nadimi, D. Biria and M. A. Asadollahi, Direct electrochemical regeneration of 1,4-NADH at the copper foam and bimetallic copper foam, *Electrochim. Acta*, 2017, **247**, 1095–1102.
- N. Ullah, I. Ali and S. Omanovic, Direct electrocatalytic reduction of coenzyme NAD<sup>+</sup> to enzymatically- active 1,4-NADH employing an iridium/ruthenium-oxide electrode, *Mater. Chem. Phys.*, 2015, **149–150**, 413–417.
- K. Warriner, S. Higson and P. Vadgama, A lactate dehydrogenase amperometric pyruvate electrode exploiting direct detection of NAD<sup>+</sup> at a poly(3-methylthiophene): poly(phenol red) modified platinum surface, *Mater. Sci. Eng., C*, 1997, **5**, 91–99.
- Y. Shimizu, A. Kitani, S. Ito and K. Sasaki, Electro-chemical Reduction of Nicotinamide Coenzyme (NAD<sup>+</sup>) Mediated with Rhodium Ion Immobilized in Polymer Modified Electrodes, *Denki Kagaku*, 1993, **61**, 872–873.
- A. Damian, K. Maloo and S. Omanovic, Direct electrochemical regeneration of NADH on Au, Cu and Pt-Au electrodes, *Chem. Biochem. Eng. Q.*, 2007, **21**, 21–32.
- A. Azem, F. Man and S. Omanovic, Direct regeneration of NADH on a ruthenium modified glassy carbon electrode, *J. Mol. Catal. A: Chem.*, 2004, **219**, 283.
- (a) A. Damian and S. Omanovic, Electrochemical reduction of NAD<sup>+</sup> on a polycrystalline gold electrode, *J. Mol. Catal. A: Chem.*, 2006, **253**, 222–233; (b) A. Damian and S. Omanovic, Interactive adsorption behaviour of NAD<sup>+</sup> at a gold electrode surface, *Langmuir*, 2006, **23**, 3162–3171; (c) R. Zhang, L. Pan, B. Guo, *et al.*, Tracking the Role of Defect Types in Co<sub>3</sub>O<sub>4</sub> Structural Evolution and Active Motifs during Oxygen Evolution Reaction, *J. Am. Chem. Soc.*, 2023, **145**, 2271–2281.
- F. Man and S. Omanovic, A kinetic study of NAD<sup>+</sup> reduction on a ruthenium modified glassy carbon electrode, *J. Electroanal. Chem.*, 2004, **568**, 301–313.
- T. Saba, J. W. H. Burnett, J. Li, P. N. Kechagiopoulos and X. Wang, A facile analytical method for reliable selectivity examination in cofactor NADH regeneration, *Chem. Commun.*, 2020, **56**, 1231.
- B. M. Reddy and A. Khan, Recent Advances on TiO<sub>2</sub>-ZrO<sub>2</sub> Mixed Oxides as Catalysts and Catalyst Supports, *Cal. Rev. Sci. Eng.*, 2005, **47**, 257–296.
- M. Morozova, P. Kluson, J. Krysa, M. Vesely, *et al.*, Electrochemical Properties of TiO<sub>2</sub> Electrode Prepared by Various Methods, *Procedia Eng.*, 2012, **42**, 573–580.
- D. Reinhardt, S. Kriek and S. Meyer, Special titanium dioxide layers and their electrochemical behavior, *Electrochem. Acta*, 2006, **52**, 825–830.
- T. Fröschl, U. Hörmann, P. Kubiak, G. Kučerová, *et al.*, High surface area crystalline titanium dioxide: potential and limits in electrochemical energy storage and catalysis, *Chem. Soc. Rev.*, 2012, **41**, 5313–5360.
- A. Curulli, F. Valentini, G. Padeletti, M. Viticoli, D. Caschera, *et al.*, Smart (Nano) materials: TiO<sub>2</sub> nanostructured films to modify electrodes for assembling of new electrochemical probes, *Sens. Actuators, B*, 2005, **111–112**, 441–449.
- M. Yamauchi, Inorganic nano catalysts for hydrogenation reactions contributable to a sustainable material supply, *Chem. Lett.*, 2021, **50**, 1901–1908.
- T. Fukushima and M. Yamauchi, Electrosynthesis of glycine from bio-derivable oxalic acid, *J. Appl. Electrochem.*, 2020, **51**, 99–106.
- H. Li, S. Wu, Z. D. Hood, J. Sun, B. Hu, C. Liang, S. Yang, Y. Xu and B. Jiang, Atomic defects in ultra-thin mesoporous TiO<sub>2</sub> enhance photocatalytic hydrogen evolution from water splitting, *Appl. Surf. Sci.*, 2020, **513**, 145723.
- R. Watanabe, M. Yamauchi, M. Sadakiyo, R. Abe and T. Takeguchi, CO<sub>2</sub>-free electric power circulation via direct charge and discharge using the glycolic acid/oxalic acid redox couple, *Energy Environ. Sci.*, 2015, **8**, 1456.
- M. Yamauchi, H. Saito, T. Sugimoto, S. Mori and S. Saito, Sustainable Organic Synthesis Promoted on Titanium Dioxide using Coordinated Water and Renewable Energies/Resources, *Coord. Chem. Rev.*, 2022, **472**, 214773.
- G. S. Li, D. Q. Zhang and J. S. Yu, Thermally stable ordered mesoporous CeO<sub>2</sub>/TiO<sub>2</sub> visible-light photocatalysts, *Phys. Chem. Chem. Phys.*, 2009, **11**, 3775–3782.
- C. Li, Z. Jiang and Z. Yao, Fabrication and characterization of multi-metal co-doped titania films for a water-splitting reaction, *Dalton Trans.*, 2010, **39**, 10692–10696.





- 30 C. Wang, Q. Hu, J. Huang, C. Zhu, Z. Deng, *et al.*, Electrochemical assisted photocatalytic degradation of salicylic acid with highly ordered TiO<sub>2</sub> nanotube electrodes, *Appl. Surf. Sci.*, 2014, **292**, 161–169.
- 31 Z. Lian, W. Wang, G. Li, F. Tian, K. S. Schanze and H. Li, Pt-Enhanced Mesoporous Ti<sup>3+</sup>/TiO<sub>2</sub> with Rapid Bulk to Surface Electron Transfer for Photocatalytic Hydrogen Evolution, *ACS Appl. Mater. Interfaces*, 2017, **9**, 16959–16966.
- 32 (a) K. Fukutani, J. Yoshinobu, M. Yamauchi, T. Shima and S. Orimo, Hydrogenomics: Efficient and selective hydrogenation of stable molecules utilizing three aspects of hydrogen, *Cat. Lett.*, 2022, **152**, 1583–1597; (b) M. Sadakiyo, S. Hata, T. Fukushima, G. Juhász and M. Yamauchi, Electrochemical hydrogenation of non-aromatic carboxylic acid derivatives as a sustainable synthesis process: from catalyst design to device construction, *Phys. Chem. Chem. Phys.*, 2019, **21**, 5882–5889.
- 33 (a) H. Eguchi, K. Kato, G. Juhász and M. Yamauchi, Selectivity Enhancement in Electrochemical Reduction of Oxalic Acid on Titanium Dioxide Nanoparticles Achieved by Shape and Energy-states Controls, *Catal. Sci. Technol.*, 2021, **11**, 7592–7597; (b) M. Sadakiyo, S. Hata, X. Cui and M. Yamauchi, *Sci. Rep.*, 2017, **7**(1), 17032.
- 34 T. Saba, J. Li, J. W. H. Burnett, *et al.*, NADH regeneration: a case study of Pt-catalyzed NAD<sup>+</sup> reduction with H<sub>2</sub>, *ACS Catal.*, 2021, **11**, 283–289.
- 35 E. Aamer, J. Thöming, M. Baune, N. Reimer, *et al.*, Influence of electrode potential, pH and NAD<sup>+</sup> concentration on the electrochemical NADH regeneration, *Sci. Rep.*, 2022, **12**(1), 16380.
- 36 S. Kitano, T. G. Noguchi, M. Nishihara, K. Kamitani, T. Sugiyama, S. Yoshioka, T. Miwa, K. Yoshizawa, A. Sadykov and M. Yamauchi, Heterointerface Created on Au-Cluster-Loaded Unilamellar Hydroxide Electrocatalysts as a Highly Active Site for the Oxygen Evolution Reaction, *Adv. Mater.*, 2022, **34**, 16.

