



Melt-quenched porous organic cage glasses†

Cite this: *J. Mater. Chem. A*, 2021, 9, 19807Michael C. Brand,^a Francesca Greenwell,^a Rob Clowes,^a Benjamin D. Egleston,^a Aiting Kai,^a Andrew I. Cooper,^{a*} Thomas D. Bennett^{b*} and Rebecca L. Greenaway^{c*}

The discrete molecular nature of porous organic cages (POCs) has allowed us to direct the formation of crystalline materials by crystal engineering. It has also been possible to create porous amorphous solids by deliberately disrupting the crystalline packing, either with chemical modification or by processing. More recently, organic cages were used to form isotropic porous liquids. However, the connection between solid and liquid states of POCs, and the glass state, are almost completely unexplored. Here, we investigate the melting and glass-forming behaviour of a range of organic cages, including both shape-persistent POCs formed by imine condensation, and reduced and synthetically post-modified amine POCs that are more flexible and lack shape-persistence. The organic cages exhibited melting and quenching of the resultant liquids provides molecular glasses. One of these molecular glasses exhibited improved gas uptake for both CO₂ and CH₄ compared to the starting amorphous cage. In addition, foaming of the liquid in one case resulted in a more stable and less soluble glass, which demonstrates the potential for an alternative approach to forming materials such as membranes without solution processing.

Received 4th March 2021

Accepted 28th April 2021

DOI: 10.1039/d1ta01906f

rsc.li/materials-a

Introduction

Porous materials such as metal–organic frameworks (MOFs) and covalent organic frameworks (COFs) have widespread applications such as gas storage, separations, and catalysis. Highly crystalline porous solids with precisely defined pore structures capable of selective host–guest interactions have provoked attention as ‘designable’ materials.^{1–4} However, long-range order is not a pre-requisite for practical utility. Indeed, amorphous, or disordered solids are employed across the materials spectrum in a diverse range of applications. For example, organic polymers have been studied intensively for separations and catalysis,⁵ and are used commercially in separation membranes, and inorganic glasses have found uses in display technologies and communications.⁶

Several prototypical reports have recently emerged that connect emerging families of porous materials with topological disorder.^{7,8} The search for new porous materials⁹ has led to the study of the liquid states of both metal–organic cages¹⁰ and MOFs.¹¹ In the latter case, several zeolitic imidazolate

frameworks (ZIFs) were melted at *ca.* 400 °C, and the resultant liquids cooled to form materials with no long range order, but which nonetheless retain the short range connectivity of the crystalline solid-state; that is, glasses.^{12,13} The formation of melt-quenched glasses from the liquid state offers some advantages over the crystalline solid state, including the ability to cast materials into transparent, bulk, mechanically-stable morphologies. In theory, a melt-quenched glass, or ‘frozen-liquid’ may be formed by cooling any liquid sufficiently quickly enough to avoid reordering.^{14,15} Glasses are distinguished from the more general family of amorphous solids by exhibiting a glass transition temperature, *T*_g; that is, a temperature or temperature range over which material behaviour changes from a solid to a liquid.

In this context, we consider the emerging category of porous materials known as porous organic cages (POCs). POCs are discrete shape-persistent molecules that contain a permanent cavity accessible through windows, which have been investigated as both crystalline and amorphous solids and, more recently, as porous liquids (Fig. 1).^{16–18} They are often synthesised using analogous dynamic covalent chemistries to those used to assemble COFs, such as imine condensations. However, unlike extended porous frameworks, such as COFs and MOFs, the discrete nature of POCs makes them soluble, meaning that the packing of the individual cages can be directed using solvent to access crystalline solids with different interconnected pore networks; that is, to produce different porous polymorphs. Alternatively, the crystal packing can be disrupted and POCs can be rendered amorphous, which can

^aDepartment of Chemistry, Materials Innovation Factory, University of Liverpool, 51 Oxford Street, Liverpool, L7 3NY, UK. E-mail: aicooper@liverpool.ac.uk

^bDepartment of Materials Science and Metallurgy, University of Cambridge, 27 Charles Babbage Road, Cambridge CB3 0FS, UK. E-mail: tdb35@cam.ac.uk

^cDepartment of Chemistry, Molecular Sciences Research Hub, Imperial College London, White City Campus, 82 Wood Lane, W12 0BZ, UK. E-mail: r.greenaway@imperial.ac.uk

† Electronic supplementary information (ESI) available. See DOI: 10.1039/d1ta01906f



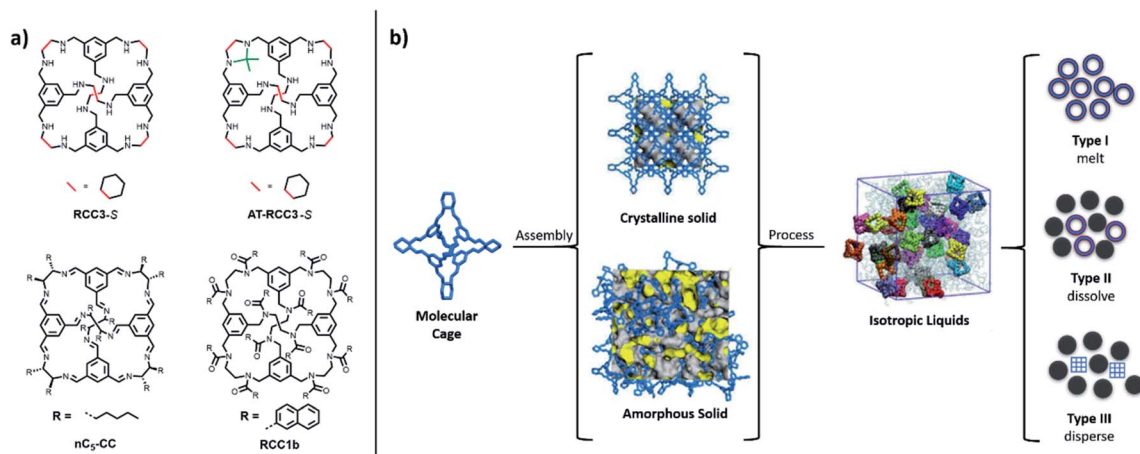


Fig. 1 (a) Structures of the organic cages studied for melting and glass formation – all cages are initially formed as a tetrahedral [4+6] cycloimine cage (CC1, CC3-S, nC₅-CC) by the reaction between 1,3,5-triformylbenzene (4 equiv.) and a vicinal diamine (6 equiv.); RCC3-S is formed by reducing CC3-S, AT-RCC3-S is formed by subsequent amination formation between acetone and RCC3-S, and RCC1b is formed by the chemical reduction of CC1 and the subsequent formation of a dodecaamide cage. (b) Crystalline solid, amorphous solid, and isotropic porous liquid states, of porous organic cages are known; the liquid phases can be categorized as Type 1, Type 2, or Type 3; in this study, Type 1 solvent-free POC liquids are investigated.

sometimes result in increased porosity with respect to the crystalline state.^{19,20} This solution processability also means that POCs can be processed into different physical forms, such as thin films and membranes.^{21,22} However, this typically requires the use of solvent to cast films onto various supports, or the use of a polymeric additive to form mixed-matrix membranes,²¹ and not all POCs have good solubility in common organic solvents.

POCs can also be modified and processed into porous liquids; that is, liquids with permanent intrinsic microporosity. Since the initial conceptualisation of porous liquids in 2007,²³ POCs have been the basis of investigations into both Type 1 porous liquids (that is, neat liquids formed from molecules containing permanent cavities) and Type 2 porous liquids (that is, solutions of a porous material in a cavity-excluded solvent).^{17,24–27} For Type 1 porous liquids, and of particular relevance to this work, POCs that were externally decorated with alkyl groups were synthesised in an attempt to form neat liquid POCs, although a neat Type 1 porous liquid was not fully realised due to interpenetration of the alkyl chains into the cage cavities.^{28,29} Moreover, while melting points were reported, the potential glass-forming behaviour of these alkylated POCs was not investigated.

Alongside the formation of melt-quenched glasses from porous frameworks, molecular organic glasses have seen increased attention over the past 20 years due to their applications in electronic and optoelectronic devices.³⁰ Bringing together several characteristics of molecular species, including their small size, well-defined structure, and high purity,³¹ molecular glasses have shown benefits such as higher resolution,³² higher device efficiency, and increased stability.³³ While there are many examples of molecular organic glasses, their formation from molecular organic cages with a permanent cavity has not been studied to date. Here, we studied the formation and properties of molecular glasses from melt-

quenched organic cage liquids. We suggest that this strategy may be a new, complementary route to functional materials such as membranes.

Experimental

Materials

1,3,5-Triformylbenzene (TFB) and (1*S*,2*S*)-cyclohexane-1,2-diamine (*S,S*-CHDA) were purchased from Manchester Organics; trifluoroacetic acid (TFA) was purchased from TCI UK; sodium borohydride, sodium sulfate, and ethylenediamine (EDA), triethylamine, naphthoyl chloride, and formic acid were purchased from Sigma-Aldrich. Dichloromethane (DCM), methanol, chloroform, acetone, and hexane were reagent or HPLC grade and purchased from Fisher Scientific. (6*S*,7*S*)-Dodecane-6,7-diamine was synthesised following a literature procedure²⁸ via a diazo-Cope rearrangement and hydrolysis using (1*R*,2*R*)-1,2-bis(2-hydroxyphenyl)ethylenediamine and hexanal from Sigma-Aldrich, and toluene, 37% hydrochloric acid, and tetrahydrofuran (THF) from Fisher Scientific. All gases (nitrogen, carbon dioxide, methane, xenon, butane) were purchased from BOC at a purity of $\geq 99.9\%$. All chemicals and solvents were used as received without any purification.

Synthesis of organic cages

Full synthetic protocols and characterisation data can be found in the ESI.†

RCC3-S is synthesised by reducing CC3-S, and AT-RCC3-S is formed by subsequent amination formation between acetone and RCC3-S, following modified literature procedures.^{28,34} DCM was added onto TFB (4.0 equiv.) without disturbing the solid, followed by a drop of TFA, and then a solution of *S,S*-CHDA (6.0 equiv.) in DCM was carefully layered on top. The reaction was left undisturbed at room temperature for 5 days, and the



crystals of **CC3-S** were collected by filtration, washed with methanol, and dried under vacuum. To a solution of **CC3-S** (1.0 equiv.) in a 1 : 1 mixture of chloroform : methanol was added sodium borohydride (32.0 equiv.) under nitrogen. The resulting mixture was stirred at room temperature for 1 day, before being quenched with water and concentrated by rotary evaporation. After isolation by aqueous work-up and rotary evaporation, **RCC3-S** was isolated as a pale yellow foam. To form **AT-RCC3-S**, **RCC3-S** was dissolved in acetone and left to stand at room temperature overnight. The colourless crystals of **AT-RCC3-S** were collected by filtration and washed with acetone, and dried under vacuum.

nC₅-CC is synthesised by refluxing a solution of TFB (4.0 equiv.) and (6*S*,7*S*)-dodecane-6,7-diamine²⁸ (7.2 equiv.) in chloroform for 6 days. After concentration on a rotary evaporator, acetone was added to precipitate a solid which was collected by filtration. The solid was then redissolved in a 1 : 1 mixture of dichloromethane/methanol, filtered, and the dichloromethane carefully removed under reduced pressure until an off-white solid precipitates. The **nC₅-CC** is collected by filtration and dried under vacuum.

RCC1b is synthesised by first reducing **CC1** to form **RCC1**, and **RCC1b** is then formed by forming a dodecaamide between **RCC1** and naphthoyl chloride, following modified literature procedures.³⁵ To a cooled solution (0 °C) of TFB (4.0 equiv.) in DCM was added a solution of EDA (6.1 equiv.) in DCM over 48 hours. After filtering and concentration on a rotary evaporator, hexane was added to precipitate **CC1** which was collected by filtration. To a solution of **CC1** (1.0 equiv.) in a 1 : 1 mixture of chloroform : methanol was added sodium borohydride (32.0 equiv.) batchwise under nitrogen. The resulting mixture was stirred at room temperature for 18 hours, before being quenched with water and concentrated by rotary evaporation. The resulting solid was sonicated in chloroform, and the filtrate was collected and dried using a rotary evaporator to afford **RCC1** as a colourless foamed solid. **RCC1b** was formed through the addition of triethylamine (15.0 equiv.) to a solution of **RCC1** (1.0 equiv.) in chloroform under nitrogen at 0 °C. To this solution naphthoyl chloride (12.6 equiv.) was added dropwise and the reaction was warmed to room temperature and stirred for 6 days, before concentration by rotary evaporation. THF was then added to the crude material and the slurry was sonicated before being filtered. The filtrate was concentrated by rotary evaporation and then stirred in MeOH, with the filtrate then decanted off, before the washing was repeated a further 4 times. The washed solid was collected by filtration and dried under vacuum to afford **RCC1b**.

Preparation and scale-up of glasses

Samples of each cage glass were prepared by subjecting the different as-synthesised organic cages to a heat-cool or heat-cool-heat cycle on a DSC using a ramp rate of 10 °C min⁻¹ up to the required temperatures (20 °C below *T_d* temperature, identified by TGA) before being cooled at the same rate. The glasses were subsequently analysed by PXRD, Raman spectroscopy, ¹H

NMR spectroscopy, and SEM, before being subjected to high-throughput gas sorption measurements.

For the scale-up of the glasses formed from **RCC3-S**, *a_g***RCC3-S** and *a_{fg}***RCC3-S**, a batchwise approach was used. This was achieved by heating 10 samples of ~10 mg **RCC3-S** in separate aluminium DSC pans at 10 °C min⁻¹ to either 250 °C (*a_g***RCC3-S**) or 300 °C (*a_{fg}***RCC3-S**), before cooling at 10 °C min⁻¹ to room temperature. Samples were then removed from the aluminium pans and combined to recover *a_g***RCC3-S** (42 mg) and *a_{fg}***RCC3-S** (84 mg) which were analysed by PXRD and gas sorption.

High-throughput gas sorption

High-throughput gas sorption was performed on a custom platform. A thermal camera is mounted above a sorption chamber and records the temperature change associated with gas adsorption/desorption. Samples were loaded into a 96-well ProxiPlate and degassed under vacuum whilst heating at 80 °C overnight and then left to equilibrate at 25 °C and maintained with a temperature-controlled oil heating unit. Whilst recording, the adsorbate gas is charged into the sorption chamber with approximately a 70 mbar dose. Samples were left to equilibrate for approximately 3 minutes before consecutive dosing. Data interpretation – 7 empty wells were averaged and used as a temperature change reference. This reference value was deducted from the measured temperature change in the sample wells giving temperature change in the samples. The activation temperature of the cages was determined with thermogravimetric analysis.

Characterisation methods

NMR. Solution ¹H NMR in CDCl₃ were recorded at 400 MHz using a Bruker Avance 400 NMR spectrometer.

High resolution mass spectrometry (HRMS). Electrospray ionisation (ESI) HRMS of samples were taken on an Agilent Technologies 6530B accurate mass QTOF Dual ESI system.

Elemental analysis. Elemental analysis of CHN was performed by the University of Liverpool's Department of Chemistry analytical services.

Thermogravimetric analysis (TGA). The thermal stability of the organic cages was probed on a PerkinElmer TGA 8000 with an automated vertical overhead thermobalance. The samples were heated in ceramic pans to 600 °C at 10 °C min⁻¹ under a flow of N₂.

Differential scanning calorimetry (DSC). The thermal behaviour of the organic cages was probed on a TA instruments Discovery DSC or a TA instruments Q2000. Samples were equilibrated at 20 °C before being heated in Tzero aluminium pans with lids to the desired temperature at 10 °C min⁻¹ under a flow of N₂ (50 mL min⁻¹) and held for 5 minutes, before cooling at the same rate of 10 °C min⁻¹.

Melting points. The melting behaviour of the organic cages was visually monitored using Stuart SMP10 digital melting point apparatus and are reported uncorrected.

Powder X-ray diffraction (PXRD). PXRD data were collected in transmission mode on samples held on a black opaque 96-shallow well microplate (ProxiPlate-96 Black) on a Panalytical



X'Pert PRO MPD equipped with a high-throughput screening (HTS) XYZ stage, X-ray focusing mirror and PIXcel detector, using Ni-filtered Cu K α radiation. Data were measured over the range 4–40° in $\sim 0.013^\circ$ steps over 60 minutes.

Raman. Raman spectroscopy was performed on a Renishaw InVia™ Qontor® microscope. Samples were mounted on a metal slide. Samples were irradiated with two different wavelengths, 532 nm and 785 nm.

Scanning electron microscopy (SEM). SEM images were taken on a Hitachi S4800 SEM. Samples were prepared by depositing nanocrystals onto an adhesive high-purity carbon tab on 15 mm Hitachi aluminium stubs, and coated in chromium before imaging.

Optical microscopy. Optical images were taken using a camera on an Olympus BX53 microscope.

Optical DSC and imaging station. The broad melting behaviour of **RCC3-S** was recorded using a Linkam Scientific Optical DSC450 and imaging station.

Gas sorption analysis. All samples were degassed at 90 °C for 15 hours prior to analysis. Porosity of the materials was assessed *via* nitrogen physisorption at 77 K using a Micromeritics 2020 volumetric adsorption analyser. Apparent surface areas were calculated from the data using the Brunauer–Emmett–Teller (BET) method. CH₄, CO₂, and Xe isotherms were collected using the same equipment at 273 K.

Results & discussion

Materials selection

Many POCs undergo thermal decomposition before any solid–liquid transitions occur.^{28,36,37} To induce melting, a number of design strategies can be used: for example, imine bonds in the cage can be reduced to more stable amines, and optionally post-modified, or alkyl functionalities can be introduced onto the periphery of the cage during synthesis to lower the melting point, T_m . Reduction of the imine bonds tends to yield cages that are more flexible, often leading to the loss of shape-persistence and, hence, loss of porosity. However, porosity can be re-introduced by subsequent reaction of the amines to form more rigidified amins or amides.^{34,35} While increasing the alkyl group length was reported to lower T_m in POCs,²⁸ computational modelling suggested that the longer alkyl chains begin to occupy the cavities of neighbouring cages, reducing the porosity. One exception to this was a pentyl substituted cage that was predicted to result in a porous liquid with 30% of the cages empty at any given time, although this was not demonstrated experimentally.²⁹

Bearing these design criteria in mind, we synthesized a range of structurally related organic cages, including **RCC3**, **AT-RCC3**, **nC₅-CC** (pentyl decorated covalent cage), and **RCC1b** (Fig. 1a) (see ESI Methods†) and studied them using a combination of powder X-ray diffraction (PXRD), thermogravimetric analysis (TGA), and differential scanning calorimetry (DSC).^{27,28,35} The presence of different exterior functionalities was explored (that is, no functionalization *versus* alkyl groups *versus* aromatic groups), along with the effect of molecular flexibility (shape-persistent imine cages *versus* reduced, more flexible cages), and the influence of chemical stability (that is, reversible imine bonds *versus* more stable amine and amide cages). This allowed us to map out the key chemical and structural parameters in the liquid and glass formation for POCs.

Melting and glass behaviour

Characterisation of the various cages by ¹H NMR spectroscopy, high resolution mass spectrometry (HRMS), and elemental analysis revealed high purity samples in each case (ESI Fig. 1–10†). All as-synthesised cages were found to pack into amorphous arrangements when isolated by either rapid solvent evaporation or rapid precipitation using solvent exchange, with the exception of **AT-RCC3-S**, for which the PXRD indicated some crystallinity (ESI Fig. 11–15†). Thermogravimetric analysis (TGA) was then performed after first activating the four samples to remove solvent (see ESI Methods†). Featureless TGA traces were identified, up to decomposition temperatures (T_d) in excess of 270 °C (Table 1, ESI Fig. 16–19†), suggesting that essentially all solvent had been removed. DSC was carried out on all samples, revealing complex behaviour upon heating. Specifically, DSC scans of **RCC3-S**, **AT-RCC3-S**, **nC₅-CC**, and **RCC1b** contained unexplained endothermic features prior to thermal decomposition. For example, a broad endotherm was noted for **RCC3-S** over the temperature range 100–200 °C, before a second, much sharper endotherm at *ca.* 270 °C occurred, prior to the onset of mass loss (ESI Fig. 20†). The corresponding data for **AT-RCC3-S** and **RCC1b** showed endothermic features starting at *ca.* 130 °C and *ca.* 230 °C, respectively (ESI Fig. 21 and 22†). The DSC scan for the **nC₅-CC** sample also displays an endotherm, this time at *ca.* 140–170 °C, immediately followed by a sharp exotherm at 190 °C (ESI Fig. 23†) – alongside being insoluble, subsequent PXRD analysis of the material after this exotherm indicated that the material was still amorphous (ESI Fig. 14†), suggesting that this feature in the DSC may be indicative of conversion of the cage species to an insoluble polymeric network *via* cross-linking due to the inherent

Table 1 Summary of the thermal decomposition onsets (T_d) from TGA, melting point ranges (T_m) based on visual observations and DSC, and glass transitions (T_g) from DSC, for a range of organic cages

Organic cage	$T_d/^\circ\text{C}$	$T_m/^\circ\text{C}$	$T_g/^\circ\text{C}$	Notes
RCC3-S	<i>ca.</i> 300	100–200	138	Second sharp endotherm at 270 °C
AT-RCC3-S	350	150–250	138	—
RCC1b	300	150–250	150	—
nC₅-CC	280	170–190	N/A	Sharp exotherm at 190 °C



dynamic nature of the imine bonds, prior to the onset of mass loss observed by TGA.

To unambiguously identify these endothermic features as melting transitions, T_m , the sample morphology was monitored in melting point apparatus upon heating from room temperature. Melting to macroscale liquid states was observed in each case, at temperatures corresponding to the endothermic features in the DSC scans (Table 1). The melting point ranges were very broad (100 °C range) for the more flexible reduced cages (**RCC3-S**, **AT-RCC3-S**, and **RCC1b**), especially when compared to the more rigid imine cage **nC₅-CC** (20 °C range). This is thought to be due to the amorphous nature of the as-synthesised solids (ESI Fig. 11–14†), with crystalline organic solids traditionally exhibiting much narrower melting points due to the first order transition from crystalline material to glass, especially since the characterisation of the different cages suggested they were of high purity. Since there is no long-range order in the amorphous organic cage solids, and arguably even less order with the more flexible organic cages, the (kinetic) transition from solid to liquid is consistent with the formation of a macroscale liquid state. To illustrate the observed broad melting behaviour, the behaviour of **RCC3-S** between 100–200 °C is included as a video (ESI Video 1†). Interestingly,

continued heating of the liquid formed from **RCC3-S** led to foaming at 270 °C; that is, at a temperature corresponding to the sharp endothermic feature in the DSC trace (ESI Fig. 20†). As discussed below, this foaming may be due to a thermally induced polymerization reaction.

These observations were then used in a second series of DSC experiments, where the four evacuated samples were heated to temperatures just in excess of their melting point ranges, though below their respective decomposition temperatures and any apparent exotherms. The samples were then cooled back to room temperature, and then reheated once more. The data for **RCC3-S** show clearly a reversible glass transition at 138 °C (Fig. 2a). Data for **AT-RCC3-S** and **RCC1b** were similarly unequivocal, although a glass transition was not observed for **nC₅-CC** (ESI Fig. 24–26). These data are summarized in Table 1.

The curious foaming behaviour of **RCC3-S**, associated with a sharp endotherm at 270 °C, necessitated investigation of a glass formed from cooling a sample above this temperature (Fig. 2b). A T_g for this foamed glass product was observed at an identical temperature to that of the non-foamed glass; that is, 138 °C.

The higher T_g of **RCC1b** (150 °C) is ascribed to the sterically bulky external naphthyl-amide functionalisation on the cage

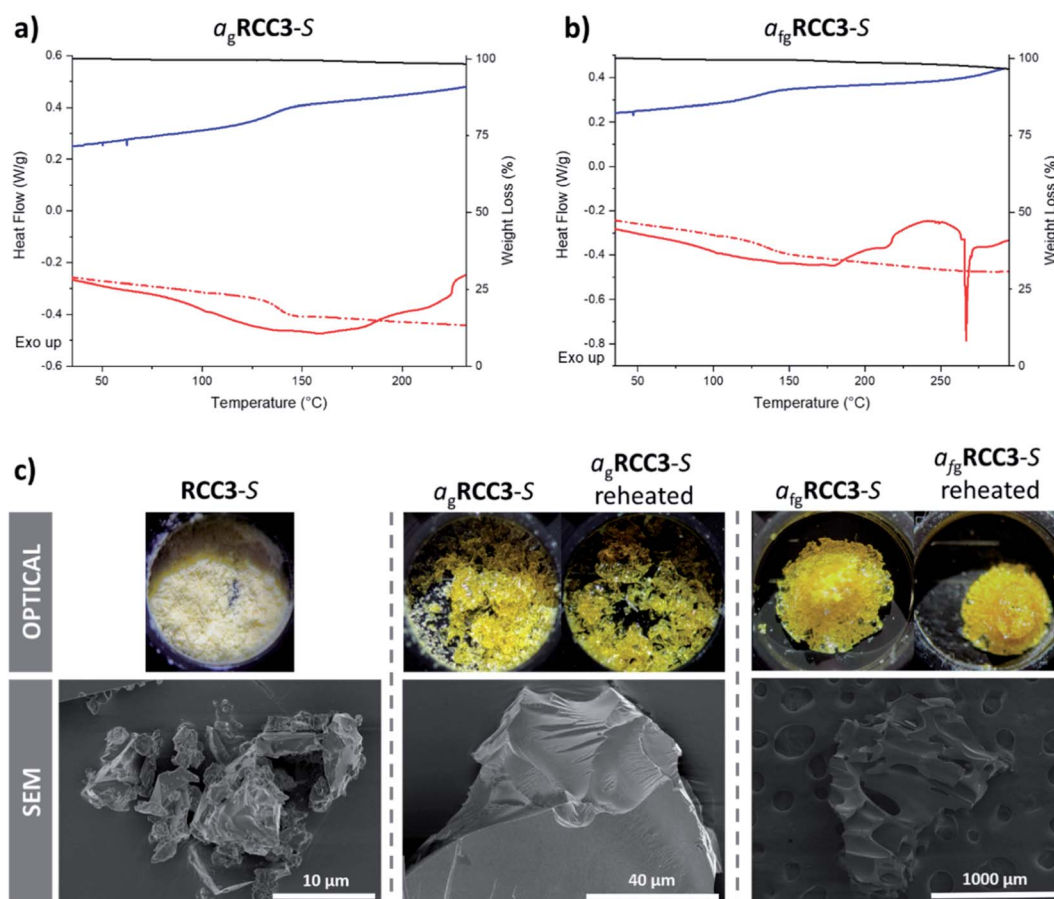


Fig. 2 DSC traces and corresponding TGA curve (black) of **RCC3-S** subjected to heat-cool-heat (HCH) cycles to (a) 250 °C forming a_g **RCC3-S**, and (b) 300 °C forming a_{fg} **RCC3-S**. DSC traces: initial upscan shown as a solid red line, downscan as a blue line, and second upscan as a dashed red line. Optical and SEM images of **RCC3-S**, a_g **RCC3-S**, and a_{fg} **RCC3-S** (c).



(Fig. 1a); the near identical lower T_g values for **RCC3-S** and **AT-RCC3-S** (138 °C) can be ascribed to reduced exterior steric bulk. The identical T_g values for **RCC3-S** and **AT-RCC3-S** was rationalised by the internal amination functionalisation in **AT-RCC3-S** having no effect on phase transitions because it is buried in the cage and not exposed to the surface of the molecule.

Glass structure and properties

The **RCC3-S**, **AT-RCC3-S**, and **RCC1b** samples recovered at room temperature after melting remained amorphous, as did the sample of **RCC3-S** recovered from the higher temperature (ESI Fig. 11–13†). The **nC₅-CC** sample post-melting, however, displayed Bragg peaks, indicative of crystallisation upon cooling from the liquid state (ESI Fig. 14†). Chemical analysis by ^1H NMR spectroscopy (ESI Fig. 27–30†) found the glass state of **RCC3-S**, and the heated sample of **nC₅-CC**, to be identical to the starting cage materials (ESI Fig. 27 and 30†). While some peak broadening was apparent for the glass state of **RCC1b** compared to the starting cage material, this may be due to the sterically bulky external naphthyl-amide functionalisation on the cage (ESI Fig. 29†). However, the foamed glass state of **RCC3-S** was completely insoluble in all solvents tested, suggesting the formation of a polymeric glass (ESI Fig. 27†). Additionally, **AT-RCC3-S** was also found to be mostly insoluble, but ^1H NMR spectroscopy of a small amount of material that dissolved in solution initially suggested that the acetal functionality had been lost and that the material had converted back to **RCC3-S** (ESI Fig. 28†); however, it has been previously reported that **AT-RCC3-S** slowly converts back to **RCC3-S** over time in the same solvents used for ^1H NMR analysis.³⁴ Therefore, both the starting (amorphous) and glass phases of **AT-RCC3-S** were analysed by Raman spectroscopy which indicated that the glass had similar characteristics to the starting cage, confirming that the **AT-RCC3-S** was still intact and had not converted to **RCC3-S** (ESI Fig. 31†).

Optical images confirmed that all samples underwent appreciable flow during the melting process (Fig. 2c and ESI Fig. 32–34†). **RCC3-S**, **AT-RCC3-S**, and **RCC1b** were all optically transparent after melting, while **nC₅-CC** contained a visible crystalline component, correlating with the observation by PXRD. Appreciable macroscopic differences were noticed between the two samples of **RCC3-S** cooled from 250 °C and 300 °C: the latter had undergone foaming (Fig. 2c). Scanning electron microscopy (SEM) images were also collected, confirming these observations (Fig. 2c, and ESI Fig. 35–37†). The foaming coincides with conversion of **RCC3-S** to an insoluble material when it is heated to the higher temperature; this was presumed to be a polymeric network, based on the ^1H NMR analysis discussed above. This foaming and the corresponding endotherm observed by DSC is likely due to the loss of a gas, which could potentially be explained by polymerisation occurring with the loss of a gaseous side product such as ethene, compared to exothermic cross-linking to form a polymeric network as observed with **nC₅-CC**. Alternatively, the foaming may be explained by the thermal release of strongly bound gaseous guests, either from within the cage cavities

(physisorption) or from a carbamate formed from CO_2 binding with the free amines (chemisorption).

In line with previous terminology on the formation of glasses by melt-quenching MOFs,¹² the glasses formed here are referred to as $a_g\text{RCC3-S}$, $a_g\text{AT-RCC3-S}$, and $a_g\text{RCC1b}$; the foamed glass is referred to as $a_{fg}\text{RCC3-S}$. Given the absence of any observable glass behaviour in **nC₅-CC**, this cage was not investigated further.

High throughput thermal gas adsorption experiments (see Methods†) were carried out on the four glass samples, $a_g\text{RCC3-S}$, $a_{fg}\text{RCC3-S}$, $a_g\text{AT-RCC3-S}$, and $a_g\text{RCC1b}$. Initially, CO_2 measurements were carried out (Fig. 3a–d, ESI Fig. 38–41†). The quantity of CO_2 adsorbed by $a_g\text{RCC3-S}$, $a_g\text{AT-RCC3-S}$, and $a_g\text{RCC1b}$ was found to be substantially reduced, albeit not completely lost for $a_g\text{RCC3-S}$, compared to the amounts adsorbed by the starting amorphous cage materials, demonstrating a decrease in porosity upon glass formation. Subsequent experiments on these glasses, which had been reheated above their respective T_g , indicated that no further reduction in porosity occurred upon crossing the glass transition.

By contrast, the quantity of CO_2 adsorbed by $a_{fg}\text{RCC3-S}$ was found to be greater than either **RCC3-S** or $a_g\text{RCC3-S}$. In other words, porosity was apparently increased in the foamed glass. This motivated us to probe the uptake of this foamed glass for a range of other gases. CH_4 , Xe, and nC_4H_{10} , were selected because they span a range of kinetic diameters^{38–40} – $\text{CO}_2 = 3.3$ Å, $\text{CH}_4 = 3.8$ Å, $\text{Xe} = 3.96$ Å, $\text{nC}_4\text{H}_{10} = 4.3$ Å (Fig. 4a–c, ESI Fig. 42–44†). This foamed glass was found to exhibit appreciable uptake of all three gases, although as the kinetic diameter of the gas increased, any difference between the three samples (**RCC3-S**, $a_{fg}\text{RCC3-S}$, and reheated $a_{fg}\text{RCC3-S}$) became much less pronounced. Finally, we found that the permanent porosity of the $a_{fg}\text{RCC3-S}$ sample was retained after 6 weeks, demonstrating the stability of the glass phase (ESI Fig. 45†).

Sorption studies

Since the preliminary results of the high-throughput thermal gas uptake screen indicated that $a_{fg}\text{RCC3-S}$ was porous, the formation of the foamed glass was scaled up for sorption studies. Additionally, for comparison, the non-foamed glass formed from **RCC3-S** was also scaled up ($a_g\text{RCC3-S}$) and compared to $a_{fg}\text{RCC3-S}$, alongside the parent amorphous solid, **RCC3-S**. For the scale-up procedure and DSC traces, see ESI Methods and ESI Fig. 46.† Sorption studies were carried out using a range of gases including N_2 (77 K), CH_4 (273 K), CO_2 (273 K), and Xe (273 K) (Fig. 5 and ESI Fig. 47–51†). None of the materials exhibited high BET surface areas (**RCC3-S** $15\text{ m}^2\text{ g}^{-1}$, $a_g\text{RCC3-S}$ $25\text{ m}^2\text{ g}^{-1}$, $a_{fg}\text{RCC3-S}$, $13\text{ m}^2\text{ g}^{-1}$), although this is not surprising given the lack of shape-persistence in the **RCC3** cage structure, leading to pore collapse as a result of the inherent increased flexibility that occurs on reduction of the imine bonds. Additionally, the pore size distributions were all similar with no major changes observed in the foamed glass, although the total pore volumes indicate that $a_g\text{RCC3-S}$ has the largest pore volume (ESI Fig. 52†), which is also supported by the much larger hysteresis observed in the isotherms for $a_g\text{RCC3-S}$



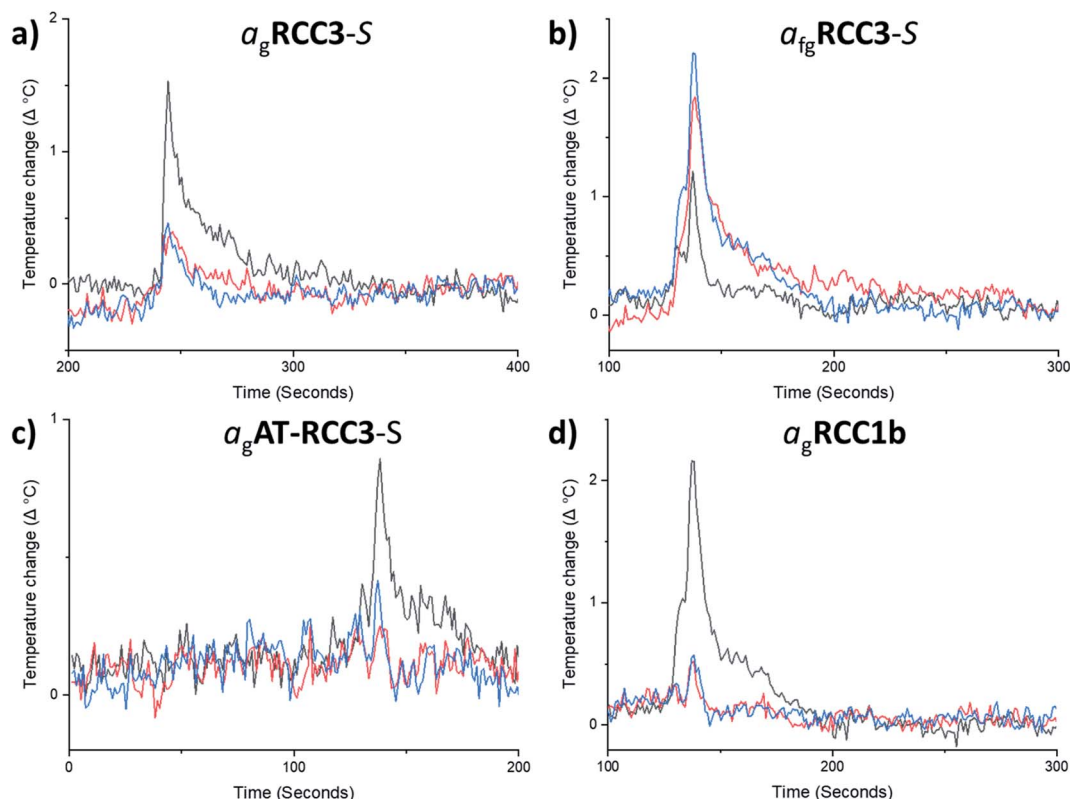


Fig. 3 High-throughput thermal CO_2 uptake measurements on (a) RCC3-S and $a_g\text{RCC3-S}$, (b) RCC3-S and $a_{fg}\text{RCC3-S}$, (c) AT-RCC3-S and $a_g\text{RCC3-S}$, (d) RCC1b and $a_g\text{RCC1b}$. As CO_2 is dosed into the evacuated samples of each cage and glass, an increase in temperature indicates the relative porosity in the samples – amorphous solids (black), melt-quenched glasses (red), and reheated glass samples above T_g (blue). The first CO_2 addition is shown here for clarity.

(Fig. 5). However, while it is difficult to draw quantitative conclusions on the uptake behaviours in these low porosity materials, for CO_2 and CH_4 , both $a_g\text{RCC3-S}$ and $a_{fg}\text{RCC3-S}$ demonstrated increased uptakes over the starting amorphous cage RCC3-S , albeit to differing degrees (Table 2). In particular, $a_g\text{RCC3-S}$ took up substantially more CH_4 , even compared to the $a_{fg}\text{RCC3-S}$, demonstrating an ~ 17 fold increase compared to the starting amorphous cage. This contrasts with the high-throughput gas adsorption screening experiments where that indicated that $a_{fg}\text{RCC3-S}$ had an apparent increased porosity

compared to both RCC3-S and $a_g\text{RCC3-S}$, at least for CO_2 . This most likely reflects the semi-quantitative nature of this high-throughput screening approach, since differences in the colour, plate well coverage, and specific heat capacity for each sample can also affect the measured temperature increase. In the case of Xe, both glasses exhibited a reduction in gas uptake compare to RCC3-S : we believe that the Xe uptake in RCC3-S is mostly due to extrinsic porosity that exists between cages in the amorphous material, and this is reduced in the glasses due to the formation of denser amorphous phases.

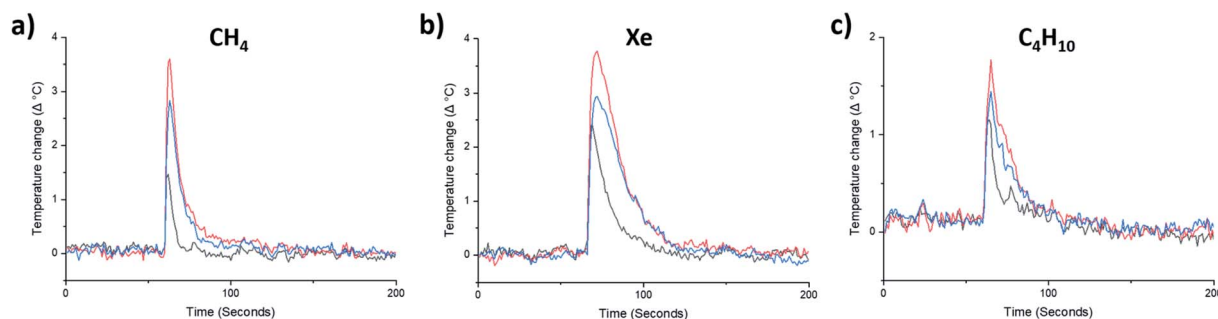
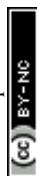


Fig. 4 High-throughput gas uptake measurements on RCC3-S and $a_{fg}\text{RCC3-S}$: (a) CH_4 , (b) Xe, and (c) C_4H_{10} . As gas is dosed into the evacuated samples of RCC3-S and $a_{fg}\text{RCC3-S}$, an increase in temperature indicates the relative porosity of the samples – amorphous solids (RCC3-S , black), melt-quenched glasses ($a_{fg}\text{RCC3-S}$, red), and the reheated glass sample above T_g (reheated $a_{fg}\text{RCC3-S}$, blue). The first gas addition is shown here for clarity.



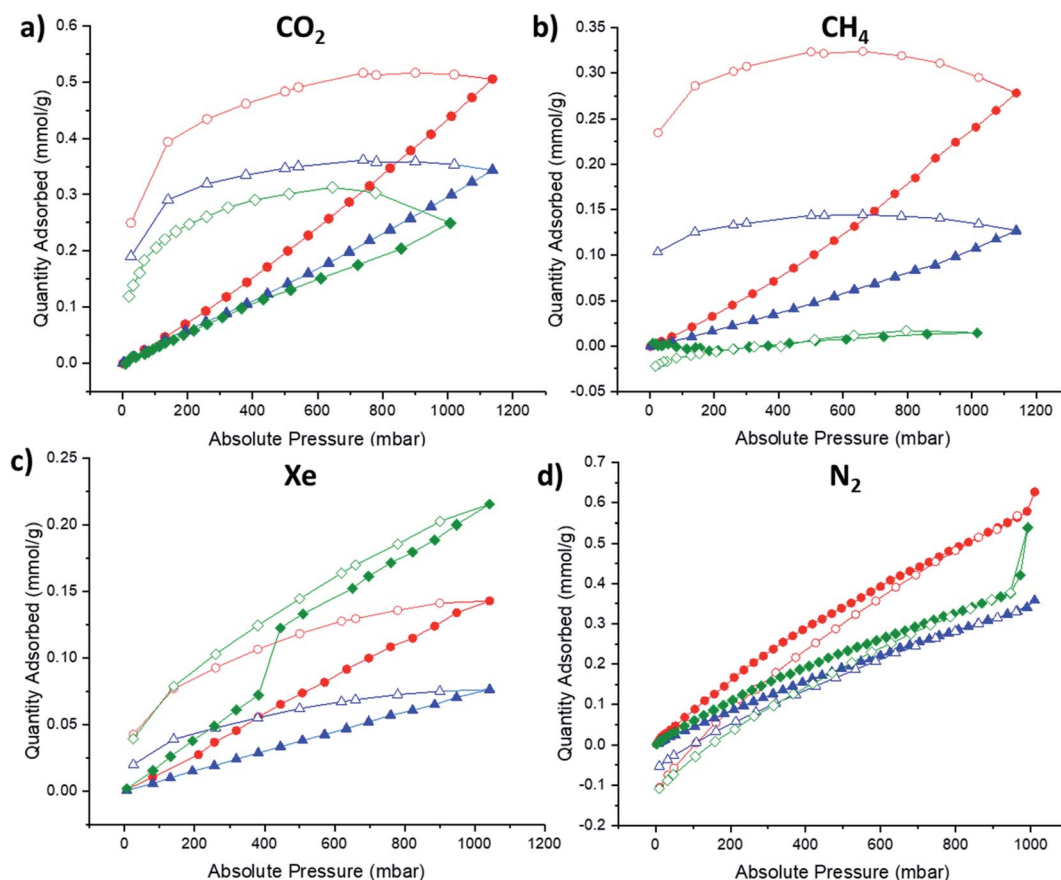


Fig. 5 Adsorption (filled) and desorption (empty) isotherms for RCC3-S (green), a_g RCC3-S (red), a_{fg} RCC3-S (blue): (a) CO₂, 273 K; (b) CH₄, 273 K; (c) Xe, 273 K; (d) N₂, 77 K.

Table 2 Comparison of gas uptakes of RCC3-S, a_g RCC3-S, and a_{fg} RCC3-S with CO₂ (273 K), CH₄ (273 K), Xe (273 K), and N₂ (77 K) at 1 bar

Material	CO ₂ (mmol g ⁻¹)	CH ₄ (mmol g ⁻¹)	Xe (mmol g ⁻¹)	N ₂ (mmol g ⁻¹)
RCC3-S	0.25	0.014	0.22	0.54
a_g RCC3-S	0.44	0.24	0.14	0.63
a_{fg} RCC3-S	0.30	0.11	0.077	0.34

While the observed gas uptakes in these melt-quenched organic cage glasses is low, especially when comparing the BET surface areas to crystalline MOFs, COFs, ZIFs, and POCs, which can easily exceed 500 m² g⁻¹, the uptakes are comparable to previously reported ZIF glasses. For example, a_g RCC3-S has a CO₂ uptake of 9.8 cm³ g⁻¹ (273 K, 1 bar) which is in the same order of magnitude to a_g ZIF-62(Co) (~17 cm³ g⁻¹, 273 K, 1 bar),⁴¹ and a CH₄ uptake of 5.4 cm³ g⁻¹ (273 K, 1 bar) which is comparable to that reported for a_g ZIF-76-mblm (~6 cm³ g⁻¹, 273 K, 1 bar).⁴² Therefore the uptake in these materials is promising, especially as future systems could be designed and engineered with the aim of increasing the porosity.

Conclusions

It is possible that most of the observed porosity in the amorphous solid state of these POCs results from extrinsic porosity

between cages. In the case of shape-persistent cages, such as n C₅-CC, the inherent intrinsic porosity may facilitate connectivity between these extrinsic voids.⁴³ However, for the reduced derivatives RCC3-S, AT-RCC3-S, and RCC1b, the reduction of the imine bonds has previously been reported to increase the flexibility of the structure, thus leading to cavity collapse.^{34,35} This reduces gas uptake significantly due to the loss of shape-persistence, and any observed porosity is therefore mostly due to the extrinsic cavities.³⁴ The lack of appreciable xenon uptake in the glass samples could therefore be explained by the reduction of extrinsic porosity upon formation of more dense glass phases.

The increase in porosity for methane in the two glasses a_g RCC3-S and a_{fg} RCC3-S is encouraging from the point of view of potential separation materials. Polymers of intrinsic microporosity (PIMs) have emerged as an important platform for gas separations,^{44,45} but to date they have not been processed *via* the



liquid state—they are invariably processed by solution casting, and the solvent used can influence the porosity.^{46–48} Additionally, while a glass transition for PIM-1 has been reported,⁴⁹ the glass transition is substantially higher than reported here for these molecular glasses (~ 440 °C compared to ~ 140 °C for $a_{\text{g}}\text{RCC3-S}$ and $a_{\text{fg}}\text{RCC3-S}$). The use of meltable organic cages as a glass former could enable casting directly from the liquid state. This has the potential to introduce porosity and also undergo conversion into a more stable and less soluble glass, as in the case of $a_{\text{fg}}\text{RCC3-S}$. In principle, this could overcome the need for solution processing, both reducing solvent use and providing an alternative approach to the formation of membranes or other separation media—for example, by dip-coating a substrate. In this respect, the lack of high surface areas in these materials may be an advantage, especially for demanding separations of gases with similar kinetic diameters. In addition, if stable liquid porous organic cages can be designed and realised that have a glass transition, as opposed to the flexible reduced organic cages studied here, then melt-quenched porous organic glasses with increased porosity and size-selective pores could be realised. Alternatively, these meltable organic cages could be used to form glass variants of mixed-matrix membranes, where porosity could be induced by introducing a porous material into a non-porous glass to form hybrid materials. In addition to being able to cast directly from the liquid state without the use of solvent, such glasses could also be recyclable and re-castable, opening up a new processing route to molecular glasses with size-selective pores and tuneable porosity. Finally, the formation of POCs, and in particular CC3-S – the precursor to RCC3-S used to form the glasses studied, is highly scalable by both twin-screw extrusion⁵⁰ and in flow⁵¹ from commercially available precursors, which will hopefully enable further research into processing these materials into porous molecular glasses.

Author contributions

M. C. B., F. G., A. K., and R. L. G. carried out the cage synthesis and characterisation. M. C. B. and F. G. carried out the thermal studies, and M. C. B. carried out the property investigation of the solids, liquids, and glasses. B. D. E. carried out the SEM measurements of the solids and glasses. R. C. carried out the sorption experiments. A. I. C., T. D. B., and R. L. G. conceived the project, and the paper was written by R. L. G. and T. D. B. with input from all authors.

Conflicts of interest

The authors declare no competing interests.

Acknowledgements

We thank the Engineering and Physical Sciences Research Council (EPSRC) under the grant EP/R005710/1, and for an EPSRC Summer Vacation Bursary at the University of Liverpool. T. D. B. and R. L. G. thank the Royal Society for University Research Fellowships (URF191432 and URF150021). T. D. B.

also thanks the Leverhulme Trust for a Philip Leverhulme Prize (2019). We thank Shrey Sharma and Linkam Scientific for the loan of an Optical DSC450 and imaging station. We acknowledge the MicroBioRefinery for assistance with QTOF-MS measurements, and Rachel Kearsey and Alex James (University of Liverpool) for helpful discussions.

References

- 1 H. Furukawa, K. E. Cordova, M. O'Keeffe and O. M. Yaghi, *Science*, 2013, **341**, 1230444.
- 2 S. Horike, S. Shimomura and S. Kitagawa, *Nat. Chem.*, 2009, **1**, 695–704.
- 3 A. M. Evans, L. R. Parent, N. C. Flanders, R. P. Bisbey, E. Vitaku, M. S. Kirschner, R. D. Schaller, L. X. Chen, N. C. Gianneschi and W. R. Dichtel, *Science*, 2018, **361**, 52–57.
- 4 A. P. Côté, A. I. Benin, N. W. Ockwig, M. O'Keeffe, A. J. Matzger and O. M. Yaghi, *Science*, 2005, **310**, 1166–1170.
- 5 N. B. McKeown and P. M. Budd, *Chem. Soc. Rev.*, 2006, **35**, 675–683.
- 6 J. C. Mauro, C. S. Philip, D. J. Vaughn and M. S. Pambianchi, *Int. J. Appl. Glass Sci.*, 2014, **5**, 2–15.
- 7 A. Carné-Sánchez, G. A. Craig, P. Larpent, T. Hirose, M. Higuchi, S. Kitagawa, K. Matsuda, K. Urayama and S. Furukawa, *Nat. Commun.*, 2018, **9**, 2506.
- 8 S. Kitagawa, *Acc. Chem. Res.*, 2017, **50**, 516.
- 9 A. G. Slater and A. I. Cooper, *Science*, 2015, **348**, 8075.
- 10 L. Ma, C. J. E. Haynes, A. B. Grommet, A. Walczak, C. C. Parkins, C. M. Doherty, L. Longley, A. Tron, A. R. Stefankiewicz, T. D. Bennett and J. R. Nitschke, *Nat. Chem.*, 2020, **12**, 270–275.
- 11 T. D. Bennett and S. Horike, *Nat. Rev. Mater.*, 2018, **3**, 431–440.
- 12 T. D. Bennett, Y. Yue, P. Li, A. Qiao, H. Tao, N. G. Greaves, T. Richards, G. I. Lampronti, S. A. T. Redfern, F. Blanc, O. K. Farha, J. T. Hupp, A. K. Cheetham and D. A. Keen, *J. Am. Chem. Soc.*, 2016, **138**, 3484–3492.
- 13 T. D. Bennett, J. C. Tan, Y. Yue, E. Baxter, C. Ducati, N. J. Terrill, H. H. M. Yeung, Z. Zhou, W. Chen, S. Henke, A. K. Cheetham and G. N. Greaves, *Nat. Commun.*, 2015, **6**, 8079.
- 14 P. G. Debenedetti and F. H. Stillinger, *Nature*, 2001, **410**, 259–267.
- 15 C. A. Angell, *Science*, 1995, **267**, 1924–1935.
- 16 G. Zhang and M. Mastalerz, *Chem. Soc. Rev.*, 2014, **43**, 1934–1947.
- 17 N. Giri, M. G. Del Pópolo, G. Melaugh, R. L. Greenaway, K. Rätzke, T. Koschine, L. Pison, M. F. C. Gomes, A. I. Cooper and S. L. James, *Nature*, 2015, **527**, 216–220.
- 18 A. I. Cooper, *ACS Cent. Sci.*, 2017, **3**, 544–553.
- 19 T. Hasell, S. Y. Chong, K. E. Jelfs, D. J. Adams and A. I. Cooper, *J. Am. Chem. Soc.*, 2012, **134**, 588–598.
- 20 S. Jiang, K. E. Jelfs, D. Holden, T. Hasell, S. Y. Chong, M. Haranczyk, A. Trewin and A. I. Cooper, *J. Am. Chem. Soc.*, 2013, **135**, 17818–17830.



- 21 A. F. Bushell, P. M. Budd, M. P. Attfield, J. T. A. Jones, T. Hasell, A. I. Cooper, P. Bernardo, F. Bazzarelli, G. Clarizia and J. C. Jansen, *Angew. Chem., Int. Ed.*, 2013, **52**, 1253–1256.
- 22 Q. Song, S. Jiang, T. Hasell, M. Liu, S. Sun, A. K. Cheetham, E. Sivaniah and A. I. Cooper, *Adv. Mater.*, 2016, **28**, 2629–2637.
- 23 N. O'Reilly, N. Giri and S. L. James, *Chem.–Eur. J.*, 2007, **13**, 3020–3025.
- 24 R. L. Greenaway, D. Holden, E. G. B. Eden, A. Stephenson, C. W. Yong, M. J. Bennison, T. Hasell, M. E. Briggs, S. L. James and A. I. Cooper, *Chem. Sci.*, 2017, **8**, 2640–2651.
- 25 R. J. Kearsley, B. M. Alston, M. E. Briggs, R. L. Greenaway and A. I. Cooper, *Chem. Sci.*, 2019, **10**, 9454–9465.
- 26 B. D. Egleston, K. V. Luzyanin, M. C. Brand, R. Clowes, M. E. Briggs, R. L. Greenaway and A. I. Cooper, *Angew. Chem., Int. Ed.*, 2020, **59**, 7362–7366.
- 27 K. Jie, N. Onishi, J. A. Schott, I. Popovs, D. en Jiang, S. Mahurin and S. Dai, *Angew. Chem., Int. Ed.*, 2020, **59**, 2268–2272.
- 28 N. Giri, C. E. Davidson, G. Melaugh, M. G. Del Pópolo, J. T. A. Jones, T. Hasell, A. I. Cooper, P. N. Horton, M. B. Hursthouse and S. L. James, *Chem. Sci.*, 2012, **3**, 2153–2157.
- 29 G. Melaugh, N. Giri, C. E. Davidson, S. L. James and M. G. Del Pópolo, *Phys. Chem. Chem. Phys.*, 2014, **16**, 9422–9431.
- 30 Y. Shirota, *J. Mater. Chem.*, 2000, **10**, 1–25.
- 31 A. Plante, S. Palato, O. Lebel and A. Soldera, *J. Mater. Chem. C*, 2013, **1**, 1037–1042.
- 32 D. Yang, S. W. Chang and C. K. Ober, *J. Mater. Chem.*, 2006, **16**, 1693–1696.
- 33 S. F. Swallen, K. L. Kearns, M. K. Mapes, Y. S. Kim, R. J. McMahon, M. D. Ediger, T. Wu, L. Yu and S. Satija, *Science*, 2007, **315**, 353–356.
- 34 M. Liu, M. A. Little, K. E. Jelfs, J. T. A. Jones, M. Schmidtman, S. Y. Chong, T. Hasell and A. I. Cooper, *J. Am. Chem. Soc.*, 2014, **136**, 7583–7586.
- 35 J. L. Culshaw, G. Cheng, M. Schmidtman, T. Hasell, M. Liu, D. J. Adams and A. I. Cooper, *J. Am. Chem. Soc.*, 2013, **135**, 10007–10010.
- 36 T. Tozawa, J. T. A. Jones, S. I. Swamy, S. Jiang, D. J. Adams, S. Shakespeare, R. Clowes, D. Bradshaw, T. Hasell, S. Y. Chong, C. Tang, S. Thompson, J. Parker, A. Trewin, J. Bacsá, A. M. Z. Slawin, A. Steiner and A. I. Cooper, *Nat. Mater.*, 2009, **8**, 973–978.
- 37 M. Mastalerz, *Chem. Commun.*, 2008, 4756–4758.
- 38 L. M. Robeson, *J. Membr. Sci.*, 1991, **62**, 165–185.
- 39 P. Wollmann, M. Leistner, U. Stoeck, R. Grönkner, K. Gedrich, N. Klein, O. Throl, W. Grählert, I. Senkovska, F. Dreisbach and S. Kaskel, *Chem. Commun.*, 2011, **47**, 5151–5153.
- 40 C. G. Saxton, A. Kruth, M. Castro, P. A. Wright and R. F. Howe, *Microporous Mesoporous Mater.*, 2009, **129**, 68–73.
- 41 L. Frentzel-Beyme, M. Kloss, R. Pallach, S. Salamon, H. Moldenhauer, J. Landers, H. Wende, J. Debus and S. Henke, *J. Mater. Chem. A*, 2019, **7**, 985–990.
- 42 C. Zhou, L. Longley, A. Krajnc, G. J. Smales, A. Qiao, I. Erucar, C. M. Doherty, A. W. Thornton, A. J. Hill, C. W. Ashling, O. T. Qazvini, S. J. Lee, P. A. Chater, N. J. Terrill, A. J. Smith, Y. Yue, G. Mali, D. A. Keen, S. G. Telfer and T. D. Bennett, *Nat. Commun.*, 2018, **9**, 5042.
- 43 E. Berardo, R. L. Greenaway, L. Turcani, B. M. Alston, M. J. Bennison, M. Miklitz, R. Clowes, M. E. Briggs, A. I. Cooper and K. E. Jelfs, *Nanoscale*, 2018, **10**, 22381–22388.
- 44 N. B. McKeown and P. M. Budd, *Chem. Soc. Rev.*, 2006, **35**, 675–683.
- 45 P. M. Budd and N. B. McKeown, *Polym. Chem.*, 2010, **1**, 63–68.
- 46 D. Wu, F. Xu, B. Sun, R. Fu, H. He and K. Matyjaszewski, *Chem. Rev.*, 2012, **112**, 3959–4015.
- 47 N. B. McKeown and P. M. Budd, *Macromolecules*, 2010, **43**, 5163–5176.
- 48 S. Wang, K. Shi, A. Tripathi, U. Chakraborty, G. N. Parsons and S. A. Khan, *ACS Appl. Polym. Mater.*, 2020, **2**, 2434–2443.
- 49 H. Yin, Y. Z. Chua, B. Yang, C. Schick, W. J. Harrison, P. M. Budd, M. Böhning and A. Schönhals, *J. Phys. Chem. Lett.*, 2018, **9**, 2003–2008.
- 50 B. D. Egleston, M. C. Brand, F. Greenwell, M. E. Briggs, S. L. James, A. I. Cooper, D. E. Crawford and R. L. Greenaway, *Chem. Sci.*, 2020, **11**, 6582–6589.
- 51 M. E. Briggs, A. G. Slater, N. Lunt, S. Jiang, M. A. Little, R. L. Greenaway, T. Hasell, C. Battilocchio, S. V. Ley and A. I. Cooper, *Chem. Commun.*, 2015, **51**, 17390–17393.

