

CrossMark  
click for updatesCite this: *J. Mater. Chem. B*, 2015, **3**,  
2607

## Structure and function of the silicifying peptide R5†

Laura Senior,<sup>ab</sup> Matthew P. Crump,<sup>c</sup> Christopher Williams,<sup>c</sup> Paula J. Booth,<sup>‡a</sup>  
Stephen Mann,<sup>c</sup> Adam W. Perriman<sup>d</sup> and Paul Curnow<sup>\*a</sup>

The 19-mer synthetic peptide known as R5 has been used widely in studies of peptide-driven silica condensation. Despite this, the structure and function of R5 have not yet been fully characterized. Here, we present a systematic study of R5 silicification focusing on three key variables: the concentration of the peptide, the concentration of the silica precursor silicic acid, and the solution pH. Additionally, we present the first study of R5 secondary structure in the presence and absence of silicic acid and introduce one-dimensional and two-dimensional solution NMR to probe both structure and higher-order peptide aggregation. We find that R5-directed silicification is linear with regard to silicic acid and H<sup>+</sup> but, unexpectedly, that silicification appears to be cooperative with respect to peptide concentration. We also find that R5 is a random coil ensemble at subsaturating silicic acid concentrations and does not spontaneously self-assemble to form discrete aggregates in solution. These data contradict a model that invokes the functional micellization of R5 and provide a framework for future studies with the R5 peptide.

Received 10th October 2014  
Accepted 10th February 2015

DOI: 10.1039/c4tb01679c

[www.rsc.org/MaterialsB](http://www.rsc.org/MaterialsB)

## Introduction

The use of organic macromolecules for the controlled precipitation and deposition of inorganic materials is now an established area of modern chemistry.<sup>1–3</sup> Such research is generally inspired by the composite biominerals found in the natural world. The assembly of many of these biominerals relies upon an organic component provided by macromolecules such as proteins and polysaccharides. The hybrid materials that result are often surprisingly ornate and complex with advantageous physical properties. In particular, hydrated silica can be synthesized *in vitro* from simple precursors using peptides,<sup>4</sup> polymers,<sup>5</sup> polyamines,<sup>6</sup> and polysaccharides<sup>7</sup> which mimic the macromolecules that are intimately involved in silicification processes *in vivo*.<sup>8,9</sup> Such biomimetic approaches allow silica to be synthesized under environmentally sustainable conditions at near-neutral pH and room temperature, and may ultimately be scalable for industrial use.<sup>10,11</sup>

Diatoms (*Bacillariophyceae*) are a group of abundant and diverse algae that are sheathed in a silicified external cell wall known as the frustule. The biomolecules responsible for diatom silicification<sup>8,9</sup> include silicon-responsive<sup>12,13</sup> silicifying polypeptides known as

silaffins that were originally isolated as proteinaceous components of the frustule<sup>14</sup> and have now been characterized in some detail.<sup>15–19</sup> In *Cylindrotheca fusiformis*, a group of homologous silaffin isoforms known collectively as silaffin-1A<sub>1</sub> are produced *in vivo* by endoproteolysis of the gene product Sil1p.<sup>12–14</sup> Sequence analysis of silaffin-1A<sub>1</sub> led to the identification of the repeat sequence motif SSKKSGSYSGSKGSKRR(I/N)L. Mature native silaffin-1A<sub>1</sub>, from which the C-terminal RRIL group is apparently removed, has unusual posttranslational modifications so that 5–11 repeats of *N*-methylpropylamine are introduced at the ε-amino group of K3 and K15, K4 is ε-*N,N*-dimethyllysine, K12 is a phosphorylated ε-*N,N,N*-trimethyl-δ-hydroxylysine, and all of the serine residues are phosphorylated. Both native silaffin-1A<sub>1</sub> and a 19-mer synthetic peptide based upon the entire repeat motif, termed R5, were shown to induce rapid silica precipitation from silicic acid solutions in phosphate/citrate buffer. Although silaffin-1A<sub>1</sub> could induce silicification down to pH 5 and was even partly active at pH 4, R5 was only active above pH 6.<sup>14</sup> There is evidence that both silaffins and R5 become entrapped within the precipitated silica, giving rise to peptide-silica precipitates.<sup>14,20</sup>

There have since been numerous attempts to exploit this peptide sequence for biotechnology. For example, R5-associated silicification has been shown to be a generic strategy for bulk enzyme encapsulation,<sup>21</sup> and covalent conjugation to R5 allows the encapsulation of small molecules<sup>22</sup> and peptides.<sup>23</sup> Additionally, R5 has been introduced to enzymes and other proteins as a silicifying motif by chemical and transcriptional fusion to enable the encapsulation of specific target proteins<sup>24–26</sup> and for the formation of novel hybrid materials<sup>27,28</sup> and biosensors.<sup>29,30</sup> Modifications to the peptide sequence can also expand the utility of R5; for example to induce silicification at biomembranes.<sup>31</sup> The dependence of silicification upon the R5

<sup>a</sup>School of Biochemistry, University of Bristol, Medical Sciences Building, University Walk, BS8 1TD, UK. E-mail: p.curnow@bristol.ac.uk; Fax: +44(0) 17 331 2168; Tel: +44(0) 117 331 1837

<sup>b</sup>Bristol Centre for Functional Nanomaterials, University of Bristol, BS8 1TD, UK

<sup>c</sup>School of Chemistry, University of Bristol, BS8 1TD, UK

<sup>d</sup>School of Cellular and Molecular Medicine, University of Bristol, BS8 1TD, UK

† Electronic supplementary information (ESI) available. See DOI: 10.1039/c4tb01679c

‡ Current address: Department of Chemistry, King's College, London, SE1 1DB, UK.



peptide sequence has been investigated and the C-terminal sequence RRIL appears to be essential for mineralization,<sup>20,32</sup> with suggestions that this motif facilitates functionally-important, spontaneous peptide self-assembly either *via* micellization<sup>20,33</sup> or through salt-bridging.<sup>32</sup> These models are consistent with the electrostatically-driven aggregation that appears to be necessary for silicification by the zwitterionic native silaffins.<sup>16</sup> Interestingly, scrambling the RRIL motif or moving it to the N-terminal or centre of R5 have a marginal effect on peptide activity but induce substantial changes to the resultant silica morphology.<sup>32</sup>

Significantly, the solution properties of R5 have not yet been fully characterized. To address this, we present here a study of the structure and function of R5 in physiologically-relevant buffers with a physiologically-relevant substrate, silicic acid ( $\text{Si}(\text{OH})_4$ ). In particular, we examine whether R5 adopts any secondary structure in solution and study silicification as a function of peptide concentration, silicic acid concentration, and pH. We also determine whether the peptide spontaneously self-assembles in the absence and presence of silicic acid.

## Materials and methods

### Peptide sequences

The 19-mer R5 peptide with sequence SSKKSGSYSGKSGKRRIL (MW, 2013 Da; pI, 11.2) was synthesized commercially (Gen-eron). The peptide was confirmed as  $\geq 95\%$  pure by the vendor *via* LS-MS (Fig. S1†). Protamine sulphate salt from salmon, synonymously salmine, with sequence PRRRRSSRPPIRRRRPR-RASRRRRRRGGRRRR (major component; MW, 4236 Da; pI, 13.3) was from Sigma-Aldrich. All other chemicals were supplied by Sigma-Aldrich at highest purity.

### Silica precipitation

Orthosilicic acid (referred to here as silicic acid) was prepared by incubating 4 ml of 0.2 M sodium silicate solution with 1.5 g Dowex 50WX4-50 cation exchange resin, prepared by acidification with 0.01 M sulfuric acid for 15 min at 4 °C.<sup>34</sup> For precipitation studies, 60  $\mu\text{l}$  of silicic acid solution was added to an equivalent volume of R5 or protamine in 50 mM sodium phosphate buffer and the final pH was adjusted as required. The samples were continuously mixed using a rotator for 15 min. To determine precipitate yield, reactions were carried out in a pre-weighed eppendorf tube and R5–silica and protamine–silica precipitates were pelleted at  $11\,000 \times g$  for 2 minutes. The supernatant was removed by pipetting and precipitates were dried for 16 h under vacuum. The tubes were then re-weighed to determine the mass of precipitate.

### Analytical methods

Dynamic light scattering was performed using a Zetasizer Nano ZS (Malvern). Samples were 50  $\mu\text{l}$  at concentrations up to 3.7 mM R5 in a low-volume quartz cuvette, measured in triplicate at 25 °C where each repeat was an average of 16 individual scans. Circular dichroism spectroscopy was performed using an AVIV model 410 spectrometer with a 0.01 mm path length cell. R5 was

at 0.5 mM in 50 mM sodium phosphate buffer at the desired pH. Exceptions to this were experiments in the presence of 1 mM silicic acid, where the peptide concentration was 0.25 mM, and reactions at pH 4.5, where 50 mM MES buffer was used. The mean of two replicate scans was used in the data analysis.

NMR spectra were recorded on a 600 MHz Varian VNMRS spectrometer equipped with a triple resonance cryogenically cooled probe-head. NMR samples contained 0.5 mM R5 in 50 mM sodium phosphate buffer and 90%  $\text{H}_2\text{O}/10\% \text{D}_2\text{O}$  at pH 7.0 or 5.5. High-resolution one-dimensional proton spectra and two-dimensional nuclear Overhauser enhancement spectroscopy (NOESY), double-quantum filtered correlation spectroscopy (DQF-COSY) and total correlation spectroscopy (TOCSY) spectra were recorded. Mixing times were 150 ms and 65 ms for NOESY and TOCSY experiments respectively. Two-dimensional data were acquired with a spectral width of 8012 Hz, 4096 complex points in  $f_2$  and 800 complex points in  $f_1$  with sculpted excitation water suppression for both the NOESY and TOCSY spectra.<sup>35</sup> Spectra were processed and plotted using VnmrJ 4.0 (Agilent).

For scanning electron microscopy, vacuum-dried R5–silica and protamine–silica precipitates were fixed onto aluminium stubs using adhesive tabs and were sputter-coated with silver. All samples were examined using a JSM 5600LV SEM (JEOL) fitted with the ISIS 300 X-ray analysis system (Oxford Instruments).

## Results and discussion

### Silicic acid concentration

We first assessed silica precipitation by both the lysine-rich peptide R5 and the arginine-rich comparator protamine as a function of silicic acid concentration. Both of these peptides are expected to facilitate silica formation from saturated solutions of silicic acid. In the early stages of silica formation, cationic peptides and small-molecule amines are thought to facilitate the local clustering of silicic acid by electrostatic interactions and hydrogen bonding and encourage dissociation to  $\text{Si}(\text{OH})_3^-$ , which promotes the initial condensation events that lead to branched polysilicic acids. Additionally, it has been proposed that charged amines reduce the energy barrier to the growth of these condensed nuclei into spherical particles and induce the flocculation of these particles to form a three-dimensional network, largely by compensating for the build-up of negative charge at the particle surface.<sup>36–39</sup>

As anticipated, the presence of either R5 or protamine resulted in rapid silica precipitation (within seconds) once silicic acid was raised above the saturating concentration of 2 mM at pH 7 (Fig. 1). No such rapid precipitation was observed in the absence of either peptide, confirming the roles of both R5 and protamine in promoting silica formation. The dry weight of these peptide–silica precipitates was found to be linear with silicic acid concentration, with the gradients of these linear curves being  $0.36 \pm 0.02$  and  $0.44 \pm 0.02$  mg product per ml per mM silicic acid for R5 and protamine, respectively ( $R^2 = 0.96$ ). Thus, under equivalent conditions, protamine generates approximately 1.2-fold greater dry weight of precipitate *versus*



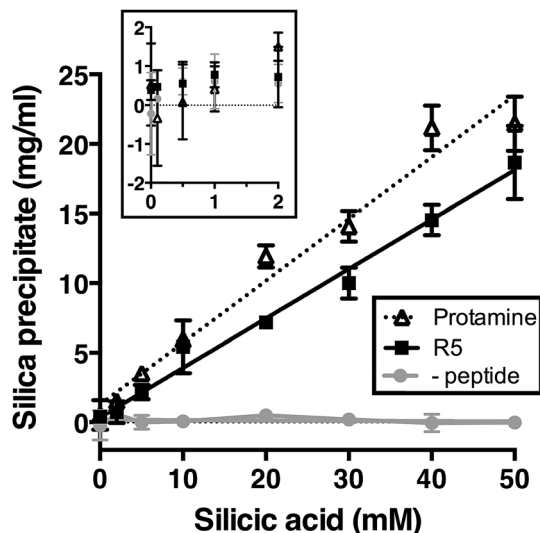


Fig. 1 Rapid silica precipitation by R5 and protamine as a function of silicic acid at pH 7, 2.5 mM of R5 or protamine. Substantial rapid precipitation is only observed at saturating concentrations of silicic acid above 2 mM (*inset*; same axes as main figure). Rapid precipitation is approximately linear with silicic acid above 2 mM. Data are mean  $\pm$  s.d. of at least two independent experiments with linear fits shown;  $R^2 = 0.96$ . (-peptide), control sample without either R5 or protamine.

R5. This modest difference in activity presumably arises from the higher charge density carried by protamine (21 charged amino acids of 32 residues *vs.* 6 of 19 residues in R5). It was previously shown that the number of charged residues within the R5 sequence was a critical factor in controlling the rate and yield of silicification, and that the specific position of lysine and arginine groups within the peptide sequence also influenced silica morphology.<sup>20,32</sup> The difference in activity between R5 and protamine may also reflect the side chain chemistries of the cationic amino acids within each peptide. The cation in protamine is exclusively arginine, and the arginine side-chain comprises a guanidino group with a geometry and charge distribution that are particularly favourable for the binding of tetrahedral oxoanions.<sup>40</sup> This may make arginine-rich peptides more effective at silicification *in vitro*. We did not determine the contribution of any sequestered peptide to the weight of the peptide-silica products, but previous reports have suggested that R5 comprises about 25% of the precipitate by weight.<sup>20,33</sup>

### Peptide concentration and pH dependence

Kröger and colleagues<sup>14,15</sup> showed that while native silaffins were fully active over the range of pH 5 to pH 8, R5 was only able to precipitate silica above pH 6. To provide a more comprehensive assessment of both the pH-dependence and peptide concentration dependence of silica precipitation, we studied precipitation by 0–3.7 mM R5 and protamine in the presence of 50 mM silicic acid at pH 6, 7 and 8.

The R5 results are shown in Fig. 2A–C. Fig. 2A shows that silica was only precipitated above 1 mM R5 at pH 7 and 8. No rapid precipitation by R5 was observed under any peptide concentrations tested at pH 6. The reaction appeared to be strongly

cooperative and was well fit to the Hill equation with Hill slopes of  $4.2 \pm 1.0$  and  $3.5 \pm 0.8$  at pH 7 and 8, respectively ( $R^2 \geq 0.9$ ). This is in contrast to previous experiments with native silaffins, where silica precipitation has a linear dependence on peptide concentration.<sup>14,16</sup> From the curve-fitting shown in Fig. 2A, the maximal weight of precipitate that could be formed from 50 mM silicic acid was  $19.3 \pm 1.0$  mg ml<sup>-1</sup> at pH 7 and  $22.5 \pm 1.5$  mg ml<sup>-1</sup> at pH 8, in good agreement with Fig. 1. Half-maximal precipitation occurred at  $1.3 \pm 0.1$  mM R5 at both pH 7 and 8. This R5 data could also be readily fit to a Boltzmann sigmoidal function. Similar behaviour was previously observed in a study of the peptide concentration dependence of R5-induced precipitation from tetramethoxysilane,<sup>20</sup> confirming that this is not related to our preparation of the silicic acid precursor, reaction conditions or use of precipitate weight measurements. Although this prior study actually applied a linear fit to such data, we use here a wider R5 concentration range and so are able to confidently assign sigmoidal behaviour. SEM microscopy (Fig. 2B) confirmed that the presence of R5 resulted in the formation of R5-silica nanospheres with an average particle size ( $d_{av}$ ) of  $540 \pm 60$  nm ( $N = 25$ ) and EDX analysis of these precipitates (Fig. 2C) showed the expected elemental composition.

Fig. 2D–F show the analogous experiments for protamine. Protamine was again found to be more active than R5 in silicification, generating substantial silica at 0.6 mM peptide (the lowest concentration tested). Protamine exhibits a less pronounced, though still discernible, pH dependence with the highest concentrations of protamine generating  $\sim 1.5$ -fold more precipitate at pH 7 and 8 than the equivalent reaction at pH 6. In contrast to the results with R5, protamine reactions were not strongly cooperative with lower Hill coefficients of  $1.5 \pm 0.2$  at all pH values. Fitting to a hyperbolic equation yielded maximal precipitation values of  $22.5 \pm 1.8$  mg ml<sup>-1</sup> at pH 6,  $35.5 \pm 1.7$  mg ml<sup>-1</sup> at pH 7 and  $41.4 \pm 2.0$  mg ml<sup>-1</sup> at pH 8, and gave half-maximal precipitation values of  $0.8 \pm 0.2$  mM at pH 6,  $1.2 \pm 0.2$  mM at pH 7 and  $1.4 \pm 0.2$  mM at pH 8. SEM micrographs from the resulting precipitates (Fig. 2E) confirmed that the addition of protamine also resulted in the formation of silica nanospheres; EDX analysis (Fig. 2F) gave the anticipated elemental composition. The average diameter of the silica spheres formed ( $d_{av}$ ) was slightly smaller for protamine compared to R5, being  $380 \pm 80$  nm ( $N = 25$ ).

### pH titration

Fig. 2 confirms that pH is clearly an important parameter in rapid silica precipitation by R5. To further investigate the pH dependence of the R5 reaction we undertook a more detailed pH titration. Fig. 3 shows that silica precipitation is linear with H<sup>+</sup> concentration over the pH range 6.4–8.0 at 2.5 mM R5 and 50 mM silicic acid. This pH dependence may arise from pH-induced changes to silicic acid, peptide or buffer components individually or in combination. We consider each of these below.

The reactive species for silicification is Si(OH)<sub>3</sub>O<sup>-</sup>, giving a linked equilibrium between the ionization of silicic acid and silica precipitation. It seems plausible that increased





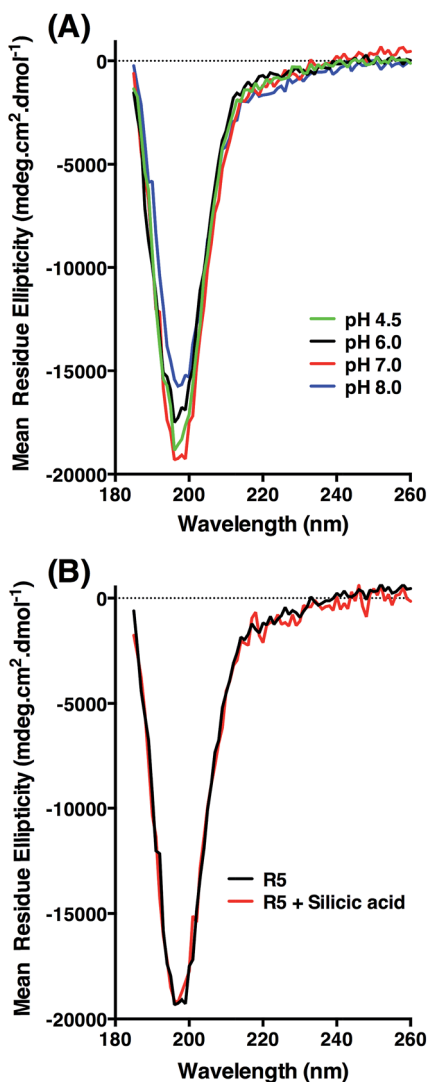


Fig. 5 Circular dichroism spectra of R5. (A) Peptide ellipticity is characteristic of random coil at all pH values tested. (B) Peptide ellipticity is unchanged in the presence of silicic acid at pH 7.0.

the protonation state of buffer phosphate could influence silicification across this pH range.

It is also possible that the pH-dependence of silicification arises from changes in peptide charge at increasing pH. However, the  $pK_a$  values of the lysine and arginine sidechains are expected to be close to the literature values of  $\sim 10$  and  $\sim 12$  in the absence of significant secondary structure (see below) and will remain fully protonated over the pH range tested here. The terminal amino and carboxyl groups are expected to have  $pK_a$  values close to 8 and 3, respectively, but the N-terminal amino group alone is not sufficient to induce silica precipitation.<sup>32</sup> Thus although we cannot exclude changes in peptide ionization playing a role in silicification, the overall peptide charge is unlikely to change significantly over the range pH 6.0–8.0.

### Structure and aggregation of R5

Positively-charged peptides have been shown to adopt secondary structures that can influence silicification.<sup>43–47</sup> In

some cases *e.g.* polylysine<sup>47</sup> it appears that the presence of silicic acid can actually induce structure formation. Using  $^{31}\text{P}$  NMR, native silaffins were shown to form a spontaneous aggregate of at least 700 peptide molecules in solution, and this assembly was suggested to be important in silicification.<sup>16</sup> Additionally, it was previously suggested that long-chain polyamines self-assemble in the presence of bridging anions and that this is central to their ability to synthesize silica *in vitro*.<sup>36,39</sup> Specifically with regard to R5, solid-state  $^{13}\text{C}$  two-dimensional NMR was previously used to study the structure of lyophilized R5 powders and R5–silica precipitates.<sup>33</sup> This study observed significant changes in peptide backbone and side-chain chemical shifts that were apparently induced by silicification. These perturbations to the local environment were interpreted as arising from changes in peptide structure and from peptide–silica interactions, and the pattern of the chemical shift variations was consistent with a model in which the peptide forms a micelle-like structure. Within this micelle the C-terminal region is buried, and participates in peptide–peptide interactions, and the N-terminal is exposed. Inspired by these studies, we sought to use solution methods to determine whether R5 adopts secondary structure in solution and whether the peptide can spontaneously assemble into higher-order micelle-like structures or other aggregates.

A computational prediction of the secondary structure of R5 was made by submitting the peptide sequence to the PSIPRED server.<sup>48</sup> The results, shown in Fig. 4, suggest that R5 is largely unstructured, with the surprising possibility of a short length of  $\beta$ -strand at the C-terminal residues KRR. The confidence in this prediction is low, and it seems unlikely to be correct since independent  $\beta$ -strands are unstable. We extended our computational analysis by using the PEP-FOLD software<sup>49</sup> to build multiple *de novo* models of the three-dimensional structure of R5, and representative models are shown in Fig. 4. The models did not converge upon any stable secondary structure in any part of the peptide sequence and this analysis suggests that the peptide is a diverse random coil ensemble in solution in agreement with experimental circular dichroism (CD) and NMR data presented here. In order to compare these random coils with experimental dynamic light scattering measurements (Fig. 7) we measured the distance between the two furthest separated main chain carbons for each of the models as shown. This measurement gives an approximate cross-section for the random coil of 1.4–2 nm, in good agreement with the hydrodynamic diameter of 2 nm determined using DLS (Fig. 7).

CD was used to assess whether R5 contained any substantial secondary structure, or whether such structure was induced upon interacting with subsaturating concentrations of silicic acid. The results are shown in Fig. 5. R5 exhibited a classical random coil signature at all pH values tested between 4.5–8.0 (Fig. 5A). Although the signal intensities were slightly varied between samples the shape of the spectra were identical with a single deflection at 198 nm characteristic of random coil.<sup>50</sup> The presence of 2 mM silicic acid at pH 7 did not induce any structural change (Fig. 5B). It was not possible to collect data at higher silicic acid concentrations because of turbidity from precipitated silica.



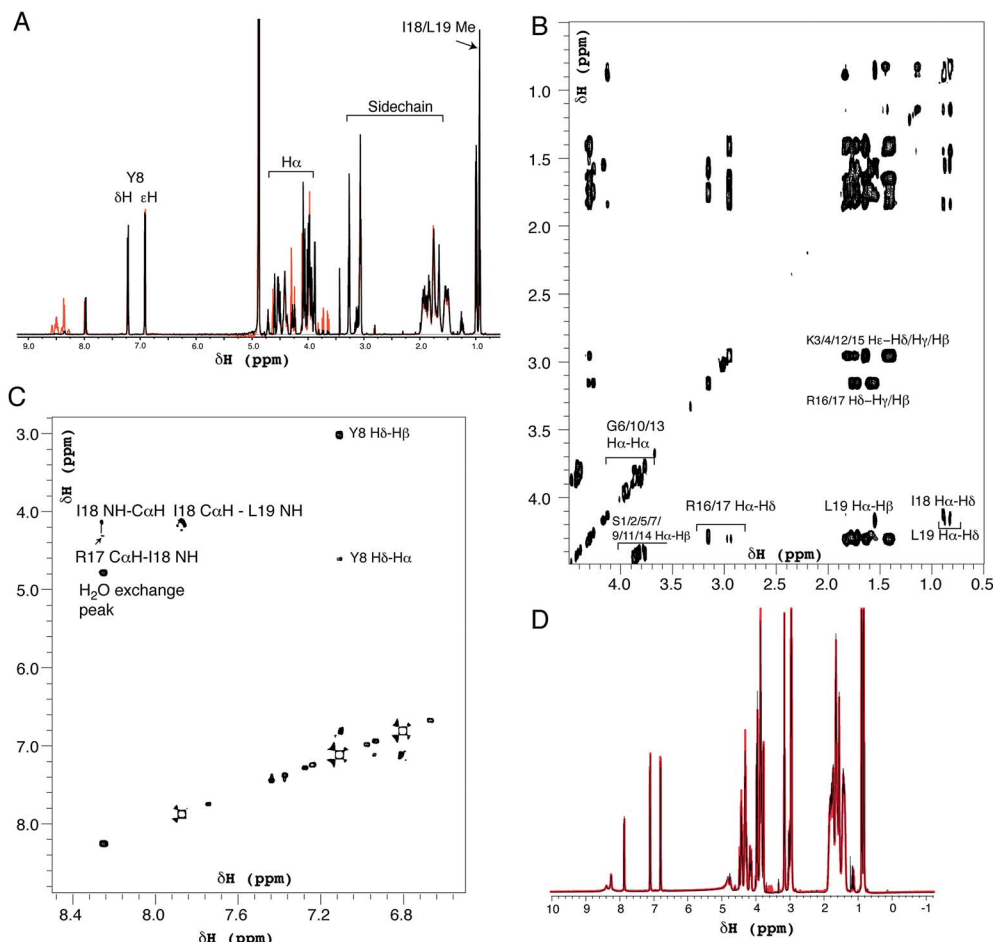


Fig. 6 Solution  $^1\text{H}$  NMR spectra of R5 collected as (A) one-dimensional  $^1\text{H}$  spectrum at pH 7.0 (black) and pH 5.5 (red), (B) two-dimensional TOCSY spectrum at pH 7.0 expanded over the aliphatic region and (C) two-dimensional NOESY spectrum showing the fingerprint region at pH 7.0. (D) Comparison of one-dimensional spectra of R5 collected as in (A) (black) and in the presence of 50  $\mu\text{M}$  silicic acid (red). Peptide concentration was 0.5 mM for all spectra.

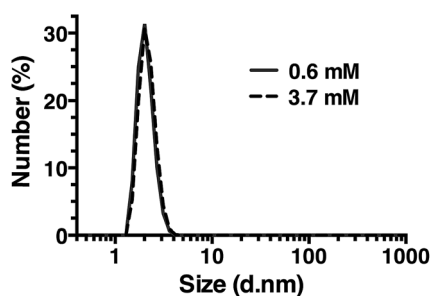


Fig. 7 Dynamic light scattering of R5 solutions. R5 is monodisperse at all concentrations tested with a single peak centered at a hydrodynamic diameter of 2 nm. Representative results at the lowest and highest concentrations tested are shown.

$^1\text{H}$  solution NMR spectra were also collected to ascertain the secondary structure and aggregation state of R5. The 1D spectrum (Fig. 6A) showed sharp peaks in the aliphatic region (0–5 ppm) of the spectrum as well as clear signals for the aromatic protons of the single tyrosine residue present. At pH 7.0 the amide signals for all but the C-terminal isoleucine (I18) and

leucine (L19) were broadened out to the baseline by solvent exchange effects. By comparison, sixteen of the nineteen amide signals were observable at pH 5.5. The aliphatic region of spectra collected at pH 7.0 and pH 5.5 were very similar with the exception of several intensity changes for side-chain  $\beta\text{H}$  protons of serine residues that sharpened at low pH due to reduced exchange effects from the side-chain ( $\text{O}\gamma$ ) hydroxyl group proton. At pH 7.0, all of the expected aliphatic signals could be identified in the two-dimensional TOCSY spectra (Fig. 6B), confirming solvent exchange as the source of line broadening and ruling out association or dynamic effects. The TOCSY experiment showed  $\text{C}\alpha\text{H}$  and sidechain proton correlations for each amino acid type (Ser, Gly, Tyr, Lys, Arg, Leu and Ile) that were clustered around the expected values for a random coil peptide and did not show the dispersion associated with structured sequences. This apparent lack of secondary structure was also suggested by NOESY experiments (Fig. 6C) that showed no significant short-range or long-range NOEs at pH 5.5 or pH 7.0. At pH 5.5 two short stretches from G6 to Y8 and I18 to L19 could be assigned using sequential assignment methods but severe overlap and lack of dispersion prevented any further assignment.



$\alpha$ H chemical shifts are strong indicators of secondary structure and the chemical shift index<sup>51</sup> predicted random coil structure along the length of the peptide; the lack of variation of  $\alpha$ H chemical shift for each residue type with sequence position meant a chemical shift index prediction could be made without complete assignments.

Identical NMR spectra were recorded in the presence of 50  $\mu$ M silicic acid and Fig. 6D shows the one-dimensional spectra in the absence and presence of silicic acid for comparison. Because of the long time-scale of the NMR experiments, we empirically determined that 50  $\mu$ M silicic acid was the highest concentration that could be used without samples gelling or precipitating. Collectively, the NMR and CD data both suggest that R5 is a monomeric random coil in solution and that soluble silicic acid does not induce the formation of secondary structure at the concentrations and pH values examined here. Our data thus confirm that primary amino acid sequence, rather than any peptide structure, is the critical factor in R5-driven silicification.

### Dynamic light scattering

Dynamic light scattering (DLS) was also used to assess whether R5 spontaneously aggregated in solution. The hydrodynamic diameter of R5 solutions was determined across a range of peptide concentrations up to 3.7 mM. A single population of particles with  $\sim$ 2 nm diameter (Fig. 7) was observed at all peptide concentrations, which was similar to the approximate sizes of the simulated peptide monomers (Fig. 4). This further supports the results from NMR (Fig. 6) which showed that R5 did not spontaneously aggregate in solution. These observations are in contrast to a previous study<sup>20</sup> that detected R5 aggregates in DLS with a diameter of 825 nm. Interestingly, the introduction of even 50  $\mu$ M silicic acid to the R5 solution gave rise to a dramatic change in the DLS readings, with the peptide peak at  $\sim$ 2 nm being abolished and replaced with either a single peak at  $\sim$ 1500 nm diameter (when calculating by particle volume) or a bimodal distribution with peaks at  $\sim$ 200 and  $\sim$ 800 nm diameter (when calculating by particle number). However, given that the NMR spectra were identical in the presence and absence of silicic acid, it seems likely that this size shift was either a DLS artefact caused by changes in solvent viscosity or that these large aggregates involve only a small fraction of the total peptide in solution. While this minor population would dominate the DLS signal, which scales with particle radius to the sixth power, they would be effectively invisible to NMR.

## Conclusions

Studies of R5-dependent silicification have previously been described at lower resolution, but to our knowledge this is the first detailed study of R5 structure and function. We find that R5 has no ordered secondary structure in solution and does not appear to assemble into discrete peptide aggregates. The structure and aggregation of the peptide appear to be unaffected by the addition of soluble silicic acid. In terms of promoting mineralization, we find that silica formation is

saturable and cooperative with regard to peptide concentration above 0.5 mM R5. Silicification is linear with  $[H^+]$  above a strict threshold value of  $\geq$ pH 6.4 that corresponds to a ratio of  $\sim$ 2500 : 1  $Si(OH)_4$  :  $Si(OH_3)O^-$ . Our findings should inform the further applications of this peptide *in vitro*.

## Acknowledgements

We thank Hannah Maple for collection of 600 MHz NMR spectra. This work was supported by European Research Council Starting Grant 282101 under the European Union's Seventh Framework Programme (FP7/2007–2013) to PC. LS is supported by Engineering and Physical Sciences Research Council Doctoral Training Centre grant EP/G036780/1.

## References

- 1 C. L. Chen and N. L. Rosi, *Angew. Chem., Int. Ed.*, 2010, **49**(11), 1924–1942.
- 2 M. Sarikaya, C. Temerler, A. K.-Y. Jen, K. Schulten and F. Baneyx, *Nat. Mater.*, 2003, **2**, 577–585.
- 3 S. Mann, *Nat. Mater.*, 2009, **8**, 781–792.
- 4 R. R. Naik, P. W. Whitlock, F. Rodriguez, L. L. Brott, D. D. Glawe, S. J. Clarson and M. O. Stone, *Chem. Commun.*, 2003, 238–239.
- 5 M. R. Knecht and D. W. Wright, *Langmuir*, 2004, **20**(11), 4728–4732.
- 6 D. J. Belton, S. V. Patwardhan, V. V. Annenkov, E. N. Danilovtseva and C. C. Perry, *Proc. Natl. Acad. Sci. U. S. A.*, 2008, **105**(16), 5963–5968.
- 7 Y. A. Shchipunov and T. Y. Karpenko, *Langmuir*, 2004, **20**(10), 3882–3887.
- 8 M. Hildebrand, *Chem. Rev.*, 2008, **108**, 4855–4874.
- 9 N. Kröger and N. Poulsen, *Annu. Rev. Genet.*, 2008, **42**, 83–107.
- 10 C. Drummond, R. McCann and S. V. Patwardhan, *Chem. Eng. J.*, 2014, **244**, 483–492.
- 11 S. V. Patwardhan, *Chem. Commun.*, 2011, **47**, 7567–7582.
- 12 T. Mock, M. P. Samanta, V. Iverson, C. Berthiaume, M. Robison, K. Holtermann, C. Durkin, S. S. BonDurant, K. Richmond, M. Rodesch, T. Kallas, E. L. Huttlin, F. Cerrina, M. R. Sussman and E. V. Armbrust, *Proc. Natl. Acad. Sci. U. S. A.*, 2008, **105**(5), 1579–1584.
- 13 R. P. Shrestha, B. Tesson, T. Norden-Krichmar, S. Federowicz, M. Hildebrand and A. E. Allen, *BMC Genomics*, 2012, **13**, 499.
- 14 N. Kröger, R. Deutzmann and M. Sumper, *Science*, 1999, **286**, 1129–1132.
- 15 N. Kröger, R. Deutzmann and M. Sumper, *J. Biol. Chem.*, 2001, **276**(28), 26066–26070.
- 16 N. Kröger, S. Lorenz, E. Brunner and M. Sumper, *Science*, 2002, **298**(5593), 584–586.
- 17 N. Poulsen, M. Sumper and N. Kröger, *Proc. Natl. Acad. Sci. U. S. A.*, 2003, **100**(21), 12075–12080.
- 18 N. Poulsen and N. Kröger, *J. Biol. Chem.*, 2004, **279**, 42993–42999.



- 19 N. Poulsen, A. Scheffel, V. C. Sheppard, P. M. Chesley and N. Kröger, *J. Biol. Chem.*, 2013, **288**(28), 20100–20109.
- 20 M. R. Knecht and D. W. Wright, *Chem. Commun.*, 2003, 3038–3039.
- 21 H. R. Luckarift, J. C. Spain, R. R. Naik and M. O. Stone, *Nat. Biotechnol.*, 2004, **22**, 211–213.
- 22 C. C. Lechner and C. F. W. Becker, *Chem. Sci.*, 2012, **3**, 3500.
- 23 C. C. Lechner and C. F. W. Becker, *Bioorg. Med. Chem.*, 2013, **21**(12), 3533–3541.
- 24 W. D. Marner, A. S. Shaikh, S. J. Muller and J. D. Keasling, *Biotechnol. Prog.*, 2009, **25**(2), 417–423.
- 25 W. D. Marner, A. S. Shaikh, S. J. Muller and J. D. Keasling, *Biomacromolecules*, 2008, **9**(1), 1–5.
- 26 D. H. Nam, K. Won, Y. H. Kim and B. I. Sang, *Biotechnol. Prog.*, 2009, **25**(6), 1643–1649.
- 27 C. Wong Po Foo, S. V. Patwardhan, D. J. Belton, B. Kitchel, D. Anastasiades, J. Huang, R. R. Naik, C. C. Perry and D. L. Kaplan, *Proc. Natl. Acad. Sci. U. S. A.*, 2006, **103**(25), 9428–9433.
- 28 A. J. Mieszawska, L. D. Nadkarni, C. C. Perry and D. L. Kaplan, *Chem. Mater.*, 2010, **22**(20), 5780–5785.
- 29 O. Choi, B. C. Kim, J. H. An, K. Min, Y. H. Kim, Y. Um, M. K. Oh and B. I. Sang, *Enzyme Microb. Technol.*, 2011, **49**(5), 441–445.
- 30 D. H. Nam, J. O. Lee, B. I. Sang, K. Won and Y. H. Kim, *Appl. Biochem. Biotechnol.*, 2013, **170**(1), 25–31.
- 31 M. S. Kent, J. K. Murton, F. J. Zendejas, H. Tran, B. A. Simmons, S. Satija and I. Kuzmenko, *Langmuir*, 2009, **25**(1), 305–310.
- 32 C. C. Lechner and C. F. W. Becker, *J. Pept. Sci.*, 2014, **20**, 152–158.
- 33 A. Roehrich and G. Drobny, *Acc. Chem. Res.*, 2013, **46**(9), 2136–2144.
- 34 G. B. Alexander, *J. Am. Chem. Soc.*, 1953, **75**(12), 2887–2888.
- 35 T.-L. Hwang and A. J. Shaka, *J. Magn. Reson., Ser. A*, 1995, 112.
- 36 M. Sumper and N. Kröger, *J. Mater. Chem.*, 2004, **14**, 2059–2065.
- 37 F. Rodriguez, D. D. Glawe, R. Naik, K. P. Hallinan and M. O. Stone, *Biomacromolecules*, 2004, **5**, 261–265.
- 38 M. B. Dickerson, K. H. Sandhage and R. R. Naik, *Chem. Rev.*, 2008, **108**, 4935–4978.
- 39 M. Sumper and E. Brunner, *Adv. Funct. Mater.*, 2006, **16**, 17–26.
- 40 P. Blondeau, M. Segura, R. Pérez-Fernández and J. de Mendoza, *Chem. Soc. Rev.*, 2006, **36**, 198–210.
- 41 M. Sumper, S. Lorenz and E. Brunner, *Angew. Chem., Int. Ed.*, 2003, **42**, 5192–5195.
- 42 A. Bernecker, R. Wieneke, R. Riedel, M. Seibt, A. Geyer and C. Steinem, *J. Am. Chem. Soc.*, 2010, **132**, 1023–1031.
- 43 K. M. Hawkins, S. S.-S. Wang, D. M. Ford and D. F. Shantz, *J. Am. Chem. Soc.*, 2004, **126**(29), 9112–9119.
- 44 S. C. Holmström, P. J. King, M. G. Ryadnov, M. F. Butler, S. Mann and D. N. Woolfson, *Langmuir*, 2008, **24**(20), 11778–11783.
- 45 V. M. Yuwono and J. D. Hartgerink, *Langmuir*, 2007, **23**(9), 5033–5038.
- 46 H. Xu, Y. Wang, X. Ge, S. Han, S. Wang, P. Zhou, H. Shan, X. Zhao and J. R. Lu, *Chem. Mater.*, 2010, **22**(18), 5165–5173.
- 47 S. V. Patwardhan, R. Maheshwari, N. Mukherjee, K. L. Kiick and S. J. Clarson, *Biomacromolecules*, 2006, **7**, 491–497.
- 48 J. T. Jones, *J. Mol. Biol.*, 1999, **292**, 195–202.
- 49 J. Maupetit, P. Derreumaux and P. Tuffery, *Nucleic Acids Res.*, 2009, **37**, W498–W503.
- 50 S. M. Kelly, T. J. Jess and N. C. Price, *Biochim. Biophys. Acta*, 2005, **1751**, 119–139.
- 51 N. E. Hafsa and D. S. Wishart, *J. Biomol. NMR*, 2014, **60**(2–3), 131–146.
- 52 W. L. DeLano, <http://www.pymol.org>, 2002.

