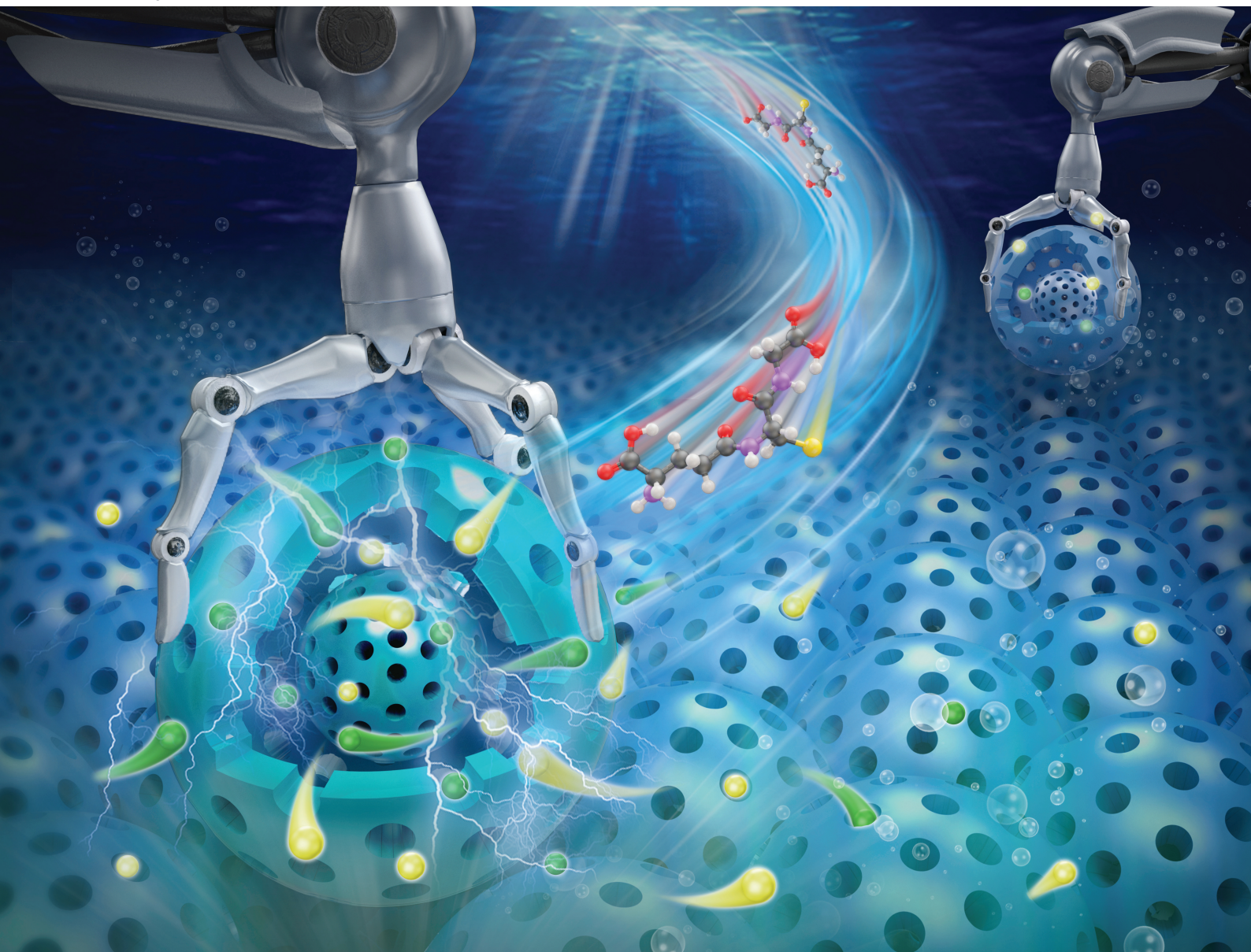


Analyst

rsc.li/analyst



ISSN 0003-2654

PAPER

Biao Kong *et al.*

Super-assembled periodic mesoporous organosilica
membranes with hierarchical channels for efficient
glutathione sensing

Industrial Chemistry & Materials

GOLD
OPEN
ACCESS

Focus on industrial chemistry
Advance material innovations
Highlight interdisciplinary feature

Innovative.
Interdisciplinary.
Problem solving

APCs currently waived

Learn more about ICM
Submit your high-quality article

 **@IndChemMater**

 **@IndChemMater**

rsc.li/icm